

Cooper Lighting Solutions Photometric Lab
1121 Highway 74 South
Peachtree City, GA 30269



Scaled data based on original data using
LM-79-2019 Approved Method: Electrical and Photometric Measurements of Solid-
State Lighting Products

Test Report Prepared for
Cooper Lighting Solutions

Brand: METALUX

Report Number: P1444716

Luminaire Tested: EHBR1-12-UNV-TA-L935-UPL18

Issue Date: 5/1/2026

Test Information

Test Method: LM-79-2019
Report Number: P1444716
REPORT IS A COMBINATION OF REPORTS P1444318 AND P1431635
Test Lab: INNOVATION CENTER
Issue Date: 5/1/2026
Manufacturer: COOPER LIGHTING SOLUTIONS
Product Line: METALUX
Catalog Number: EHBR1-12-UNV-TA-L935-UPL18
Description: Elevate Round Highbay at, 12000 lumens, 3500K 90CRI LEDs with TA lens
Light Source: -
Ballast/Driver: -

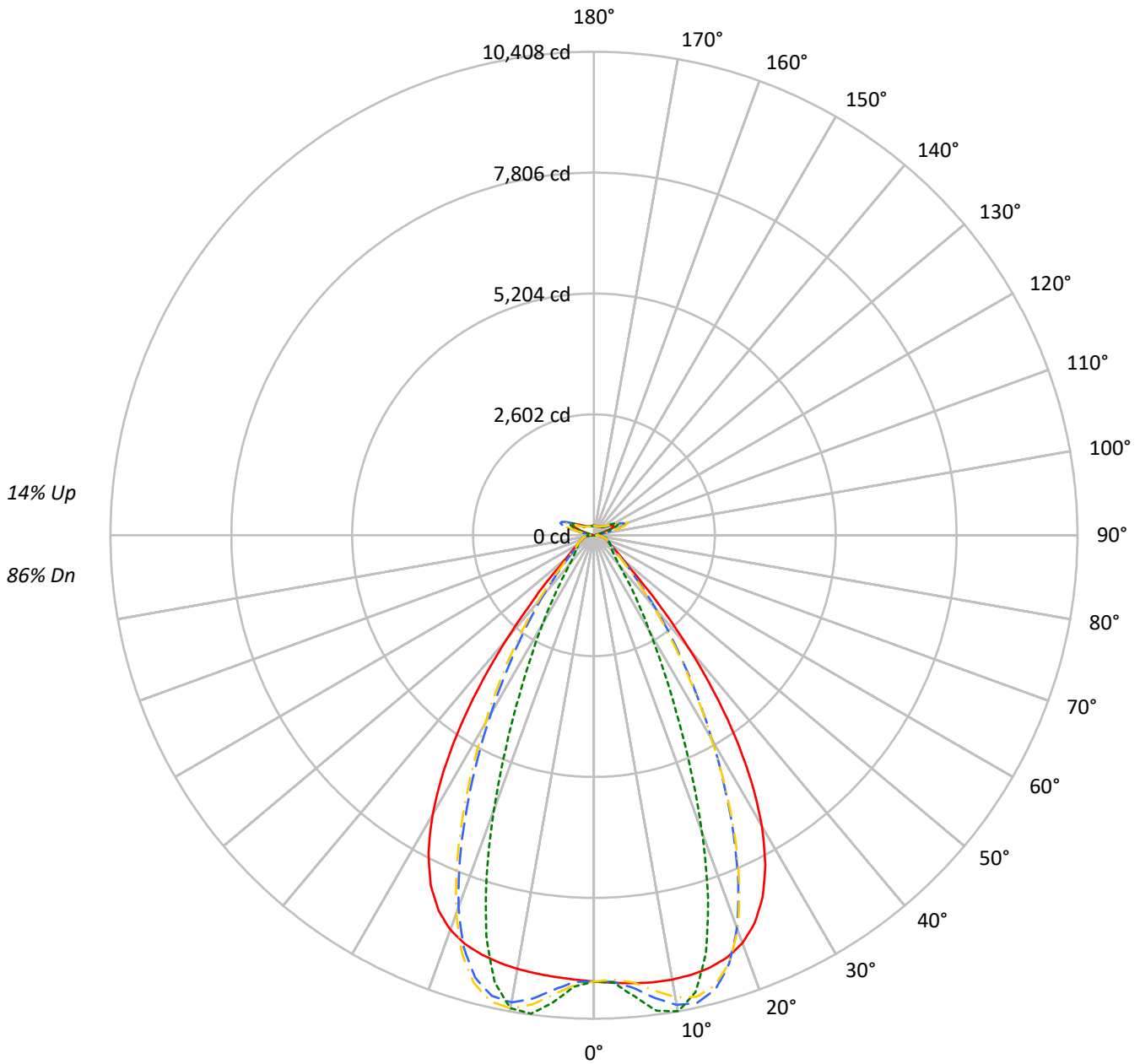
Summary

Lumens per Lamp: N/A
Luminaire Lumens: 12794.6 lumens
Efficiency: N/A
Efficacy: 167.0 lumens/watt
Spacing Criteria (0/90/45): 1.13 / 0.77 / 0.88
Luminous Opening: Vertical Cylinder (Dia: 1.71' x H: 0.1')
CIE Type: Semi-Direct

Input Watts (W): 76.6
Input Voltage (V): NR
Input Current (Ain): NR
Voltage Rise (V): NR
Power Factor: NR
Total Harmonic Distortion (THDi): NR
Frequency (hertz): 60
Stabilization Time: NR
Operation Time: NR
Ambient Temperature (°C): NR
Test Distance: 24 FT

TEST NUMBER: P1444716
CATALOG NUMBER: EHBR1-12-UNV-TA-L935-UPL18

Luminous Intensity Polar Plot



— 0°-180° - - 45°-225° - · - · 90°-270° - · - · 135°-315°



TEST NUMBER: P1444716
 CATALOG NUMBER: EHBR1-12-UNV-TA-L935-UPL18

COEFFICIENT OF UTILIZATION - ZONAL CAVITY METHOD:

RF	20				20				20				20				20				
RC	80				70				50				30				10			0	
RW	70	50	30	10	70	50	30	10	50	30	10	50	30	10	50	30	10	50	30	10	0
RCR																					
0	116	116	116	116	112	112	112	112	104	104	104	96	96	96	90	90	90	90	90	90	86
1	109	105	102	99	105	102	99	96	95	93	91	89	87	86	83	82	81	81	81	81	78
2	102	96	91	87	98	93	88	85	87	84	81	82	79	77	77	75	73	73	73	73	71
3	95	88	82	77	92	85	80	75	80	76	72	76	73	70	72	69	67	67	67	67	65
4	89	81	74	69	86	78	73	68	74	70	66	71	67	63	67	64	61	61	61	61	59
5	84	74	68	63	81	73	66	62	69	64	60	66	62	58	63	59	56	56	56	56	54
6	79	69	62	57	77	67	61	57	65	59	55	62	57	54	59	55	52	52	52	52	50
7	75	64	57	53	72	63	57	52	60	55	51	58	53	50	56	52	48	48	48	48	47
8	71	60	53	49	69	59	53	48	57	51	47	54	50	46	52	48	45	45	45	45	43
9	67	56	50	45	65	55	49	45	53	48	44	51	46	43	49	45	42	42	42	42	41
10	63	53	46	42	62	52	46	42	50	45	41	48	44	40	47	43	40	40	40	40	38

AVERAGE LUMINANCE (cd/sqm):

	0°	90°	180°	270°
0°	45115	45115	45115	45115
5°	45333	46655	44699	47267
10°	45712	48985	44616	48661
15°	45936	44404	44538	42616
20°	45461	33080	43973	30607
25°	43031	20921	41609	18982
30°	37590	12572	36135	11490
35°	28930	7889	27266	6988
40°	18301	4948	16744	4650
45°	9433	3855	9277	3792
50°	5530	3429	5360	3376
55°	4236	3244	4080	3215
60°	3585	3314	3433	3272
65°	3368	3461	3238	3343
70°	3290	3623	3126	3487
75°	3518	3843	3327	3674
80°	3640	4256	3300	3885
85°	3427	4105	2770	3515

MAXIMUM LUMINANCE 45°-90°:

Horizontal Angle: 25°
 Vertical Angle: 45°
 Luminance: 14435 cd/sqm



TEST NUMBER: P1444716
 CATALOG NUMBER: EHBR1-12-UNV-TA-L935-UPL18

ZONAL LUMENS:

Zone	Lumens	% Fixture
0°-10°	946.8	7.4
10°-20°	2663.4	20.8
20°-30°	3033.4	23.7
30°-40°	2180.3	17.0
40°-50°	1005.5	7.9
50°-60°	481.2	3.8
60°-70°	351.1	2.7
70°-80°	266.7	2.1
80°-90°	124.3	1.0
90°-100°	47.9	0.4
100°-110°	294.3	2.3
110°-120°	544.1	4.3
120°-130°	328.0	2.6
130°-140°	204.5	1.6
140°-150°	146.6	1.1
150°-160°	98.9	0.8
160°-170°	58.0	0.5
170°-180°	19.5	0.2
0°-30°	6643.6	51.9
0°-40°	8823.9	69.0
0°-60°	10310.6	80.6
0°-90°	11052.7	86.4
90°-120°	886.4	6.9
90°-150°	1565.4	12.2
90°-180°	1742.0	13.6
0°-180°	12794.6	100.0

CANDELA DISTRIBUTION:

	0°	90°	180°	270°	360°	Flux
0°	9607	9607	9607	9607	9607	
5°	9679	9962	9544	10092	9679	925
15°	9637	9316	9344	8941	9637	2715
25°	8593	4178	8309	3791	8593	3896
35°	5310	1448	5004	1282	5310	3259
45°	1526	624	1501	614	1526	1298
55°	572	438	551	434	572	528
65°	352	361	338	349	352	351
75°	248	271	234	259	248	258
85°	118	141	95	121	118	111
90°	39	47	16	18	39	23
95°	22	25	22	25	22	21
105°	104	136	69	136	104	139
115°	473	577	495	577	473	436
125°	348	372	395	373	348	318
135°	265	241	286	242	265	207
145°	227	226	243	228	227	144
155°	207	210	221	211	207	96
165°	201	202	209	203	201	57
175°	203	205	207	206	203	19
180°	205	205	205	205	205	



TEST NUMBER: P1444716
 CATALOG NUMBER: EHBR1-12-UNV-TA-L935-UPL18

CANDELA DISTRIBUTION (FULL):

	0°	2.5°	5°	7.5°	10°	12.5°	15°	17.5°	20°	22.5°	25°
0°	9606.9	9606.9	9606.9	9606.9	9606.9	9606.9	9606.9	9606.9	9606.9	9606.9	9606.9
2.5°	9643.6	9642.9	9642.7	9642.1	9641.9	9641.9	9641.5	9640.7	9640.3	9639.2	9637.9
5°	9679.4	9679.0	9679.2	9679.3	9678.6	9677.1	9674.8	9671.9	9668.3	9664.8	9661.8
7.5°	9707.1	9707.8	9708.6	9708.4	9706.3	9702.8	9698.0	9695.3	9696.9	9702.2	9714.1
10°	9712.1	9716.3	9717.8	9717.4	9713.2	9710.1	9711.3	9721.5	9741.8	9768.8	9805.8
12.5°	9692.5	9697.5	9697.4	9695.6	9691.6	9695.7	9710.5	9740.8	9784.2	9837.5	9900.0
15°	9637.2	9643.7	9641.9	9639.7	9637.0	9650.5	9680.0	9732.6	9799.7	9874.8	9951.8
17.5°	9529.8	9537.8	9533.9	9531.4	9529.1	9554.5	9605.2	9682.2	9766.7	9851.7	9924.7
20°	9343.6	9348.9	9339.7	9335.5	9339.1	9388.8	9463.4	9561.9	9650.9	9731.3	9781.1
22.5°	9039.7	9046.3	9029.1	9027.1	9048.3	9124.8	9219.1	9329.1	9412.8	9476.6	9495.7
25°	8593.3	8599.7	8579.3	8591.5	8627.6	8731.8	8844.1	8961.8	9033.2	9080.4	9067.4
27.5°	7990.6	7996.5	7977.1	8002.1	8059.2	8196.0	8328.3	8455.9	8519.5	8552.6	8510.7
30°	7230.5	7242.8	7219.9	7254.7	7341.8	7519.6	7671.1	7814.2	7877.6	7902.8	7837.6
32.5°	6327.8	6345.3	6320.1	6371.9	6493.4	6706.9	6878.9	7038.9	7109.1	7137.8	7064.1
35°	5309.7	5334.7	5305.8	5383.5	5533.4	5771.2	5961.7	6140.3	6223.4	6264.1	6189.9
37.5°	4231.0	4254.9	4239.3	4342.9	4507.5	4754.0	4948.5	5141.1	5235.0	5296.0	5237.5
40°	3172.0	3193.9	3205.7	3324.2	3479.1	3711.4	3898.1	4088.7	4193.8	4270.4	4234.4
42.5°	2238.8	2260.8	2301.2	2415.5	2544.6	2736.9	2896.9	3068.0	3168.3	3250.2	3236.2
45°	1526.2	1551.7	1602.2	1695.8	1789.3	1927.2	2044.7	2177.8	2259.8	2334.7	2335.6
47.5°	1069.5	1087.4	1132.5	1196.4	1257.4	1430.1	1437.2	1502.6	1557.6	1613.7	1621.0
50°	824.2	835.0	858.9	894.6	929.1	973.9	1015.0	1062.4	1096.3	1127.0	1134.4
52.5°	677.5	684.3	696.5	715.8	735.8	760.2	782.2	808.2	826.7	843.1	846.5
55°	572.5	578.2	596.4	600.1	622.9	627.4	637.1	652.9	663.7	673.5	676.0
57.5°	493.4	497.6	501.4	509.6	516.7	526.9	535.2	546.5	553.3	560.4	561.0
60°	431.0	434.0	436.7	442.4	447.2	454.3	460.1	467.8	472.6	477.9	478.5
62.5°	384.5	386.6	388.5	392.3	395.6	401.1	405.7	412.1	416.6	420.7	421.6
65°	351.5	353.0	354.2	357.0	360.0	364.7	368.8	374.0	377.4	380.6	381.2
67.5°	322.2	323.7	324.9	327.5	329.5	333.1	335.8	339.8	342.2	344.8	344.9
70°	288.7	290.0	290.9	293.4	295.0	298.0	300.3	303.8	306.3	309.1	309.9
72.5°	265.5	266.3	267.5	269.7	272.0	275.3	278.2	281.9	284.9	287.9	289.1
75°	247.8	248.7	249.5	251.4	253.0	255.8	257.9	261.3	264.0	267.2	268.7
77.5°	222.3	223.4	224.1	225.9	227.4	229.9	231.6	234.6	236.8	239.7	241.1
80°	191.5	192.5	193.0	194.8	195.9	198.3	199.8	202.8	204.6	207.5	209.2
82.5°	157.3	158.3	158.6	160.3	160.9	162.9	164.0	167.0	169.3	173.0	175.6
85°	117.8	118.2	118.7	118.3	120.7	120.8	123.5	124.1	127.6	128.5	132.6
87.5°	72.1	73.1	73.6	75.2	76.0	77.6	78.1	79.8	80.8	82.8	83.7
90°	38.7	41.0	42.1	44.5	45.6	47.9	48.9	51.4	52.5	55.0	56.9
92.5°	19.3	20.7	21.9	23.3	24.7	26.3	27.7	29.1	30.5	32.0	34.8
95°	22.0	23.6	25.1	26.6	28.2	29.8	31.4	32.9	34.4	36.0	40.5
97.5°	27.8	29.2	30.5	31.8	33.2	34.5	35.9	37.2	38.5	39.9	45.2
100°	36.4	37.6	38.7	39.9	41.0	42.1	43.2	44.4	45.5	46.7	56.6
102.5°	61.0	65.0	69.1	73.1	77.0	81.1	85.1	89.1	93.2	97.2	118.4
105°	104.2	115.1	126.2	136.9	147.9	158.9	169.8	180.6	191.6	202.6	237.0
107.5°	179.1	199.2	219.4	239.7	259.9	280.1	300.4	320.7	340.8	361.0	396.0
110°	332.3	348.5	364.8	381.0	397.3	413.6	429.9	446.0	462.3	478.6	504.1



TEST NUMBER: P1444716
 CATALOG NUMBER: EHBR1-12-UNV-TA-L935-UPL18

CANDELA DISTRIBUTION (continued):

	0°	2.5°	5°	7.5°	10°	12.5°	15°	17.5°	20°	22.5°	25°
112.5°	448.4	455.7	463.1	470.5	477.9	485.2	492.6	499.9	507.4	514.7	533.0
115°	472.7	475.3	477.8	480.4	483.2	485.7	488.3	491.0	493.5	496.0	508.5
117.5°	458.1	457.7	457.3	457.0	456.4	456.1	455.6	455.2	454.7	454.3	461.3
120°	426.1	423.9	421.7	419.5	417.4	415.1	412.9	410.7	408.5	406.1	409.2
122.5°	385.8	383.3	380.7	378.0	375.4	372.7	370.1	367.3	364.6	362.0	363.3
125°	348.5	345.9	343.2	340.6	337.9	335.2	332.5	329.8	327.0	324.3	325.0
127.5°	315.9	314.0	312.3	310.3	308.5	306.6	304.7	302.7	300.9	298.9	299.2
130°	294.5	292.8	291.2	289.6	287.9	286.1	284.4	282.7	281.0	279.1	279.6
132.5°	276.8	275.8	274.6	273.4	272.3	270.9	269.8	268.5	267.2	266.0	266.5
135°	264.7	263.7	262.7	261.7	260.6	259.4	258.2	257.0	255.9	254.7	255.3
137.5°	254.4	253.5	252.6	251.6	250.6	249.5	248.5	247.4	246.3	245.3	245.8
140°	245.0	244.2	243.3	242.4	241.4	240.6	239.6	238.6	237.6	236.6	237.4
142.5°	234.4	233.7	233.2	232.4	231.8	231.0	230.3	229.5	228.8	227.9	228.9
145°	227.4	226.9	226.4	225.9	225.2	224.6	224.0	223.3	222.6	222.1	223.0
147.5°	221.2	220.9	220.5	220.0	219.6	219.1	218.6	218.0	217.5	217.0	218.0
150°	215.8	215.4	215.2	214.6	214.2	213.7	213.3	212.7	212.3	211.7	212.8
152.5°	210.3	209.9	209.5	209.1	208.7	208.2	207.8	207.3	206.7	206.3	207.2
155°	206.6	206.3	205.9	205.5	205.1	204.6	204.2	203.7	203.3	202.8	203.6
157.5°	204.1	203.8	203.7	203.3	203.0	202.6	202.3	201.9	201.7	201.4	201.8
160°	202.7	202.5	202.2	201.8	201.5	201.2	200.9	200.5	200.2	199.9	200.4
162.5°	201.3	201.0	200.8	200.5	200.2	199.8	199.5	199.2	198.9	198.6	199.1
165°	200.8	200.6	200.4	200.2	200.0	199.8	199.7	199.5	199.3	199.1	199.5
167.5°	202.0	201.7	201.6	201.3	201.0	200.8	200.5	200.2	200.0	199.7	200.1
170°	202.2	202.0	201.9	201.8	201.7	201.6	201.5	201.3	201.1	201.0	201.4
172.5°	203.0	202.8	202.7	202.7	202.6	202.5	202.4	202.3	202.2	202.1	202.5
175°	202.7	202.6	202.6	202.5	202.4	202.4	202.3	202.2	202.2	202.1	202.3
177.5°	204.0	203.9	203.9	203.9	203.9	203.9	203.8	203.7	203.7	203.7	203.9
180°	205.2	205.2	205.2	205.2	205.2	205.2	205.2	205.2	205.2	205.2	205.2



TEST NUMBER: P1444716
 CATALOG NUMBER: EHBR1-12-UNV-TA-L935-UPL18

CANDELA DISTRIBUTION (continued):

	27.5°	30°	32.5°	35°	37.5°	40°	42.5°	45°	47.5°	50°	52.5°
0°	9606.9	9606.9	9606.9	9606.9	9606.9	9606.9	9606.9	9606.9	9606.9	9606.9	9606.9
2.5°	9637.0	9635.8	9634.2	9632.2	9630.5	9628.4	9623.6	9622.1	9623.8	9624.9	9627.0
5°	9659.8	9660.6	9660.8	9665.2	9669.0	9678.4	9752.3	9781.6	9804.4	9818.8	9840.7
7.5°	9728.9	9751.1	9773.1	9802.7	9828.1	9862.6	9991.9	10046.9	10086.1	10114.2	10148.8
10°	9845.9	9894.4	9939.9	9993.1	10039.0	10091.3	10211.7	10265.4	10299.3	10323.9	10346.8
12.5°	9963.7	10031.0	10091.8	10151.1	10200.6	10246.1	10288.5	10307.2	10308.8	10309.6	10297.3
15°	10025.2	10089.4	10143.0	10182.2	10211.3	10224.2	10151.3	10113.1	10064.8	10025.0	9959.5
17.5°	9986.4	10025.0	10048.1	10045.8	10033.8	9993.5	9787.1	9673.5	9560.8	9459.2	9326.0
20°	9814.2	9811.2	9791.1	9734.1	9665.5	9558.6	9204.7	9000.5	8803.1	8629.7	8419.3
22.5°	9493.8	9443.4	9373.1	9250.2	9113.6	8927.1	8419.9	8119.4	7844.6	7601.8	7329.8
25°	9029.6	8925.8	8796.2	8601.1	8388.9	8116.7	7491.6	7118.0	6788.0	6501.8	6188.1
27.5°	8435.4	8279.1	8089.2	7819.1	7531.7	7183.0	6490.0	6077.7	5723.4	5416.6	5082.6
30°	7732.0	7528.8	7283.5	6948.3	6601.5	6206.1	5503.2	5085.6	4727.1	4411.4	4077.1
32.5°	6937.1	6699.1	6411.6	6035.4	5660.5	5253.9	4575.1	4170.8	3828.3	3524.6	3222.1
35°	6060.4	5805.1	5501.1	5117.3	4744.5	4349.3	3726.4	3361.9	3059.5	2791.0	2546.8
37.5°	5119.9	4869.3	4580.2	4218.6	3873.0	3514.7	2977.3	2671.9	2418.1	2195.3	2006.7
40°	4142.1	3922.9	3672.7	3360.0	3065.1	2766.8	2325.5	2083.1	1882.8	1713.0	1571.6
42.5°	3176.2	3006.3	2814.5	2567.4	2341.8	2114.6	1775.0	1595.4	1447.0	1324.7	1224.8
45°	2304.5	2190.8	2062.2	1890.4	1734.3	1575.7	1334.1	1207.9	1111.3	1032.4	965.7
47.5°	1611.0	1545.0	1541.0	1382.2	1267.8	1170.9	1015.2	935.4	876.2	828.5	786.2
50°	1131.4	1099.5	1059.8	1003.1	950.0	895.3	800.4	752.2	717.5	688.5	661.9
52.5°	845.8	829.2	808.1	778.0	749.3	718.4	658.4	627.7	616.8	589.8	568.7
55°	675.5	666.1	654.0	636.3	618.8	611.9	560.4	537.6	523.1	512.5	501.2
57.5°	561.1	554.0	546.9	534.9	524.8	512.5	485.2	473.6	464.9	458.7	450.8
60°	478.6	474.4	470.4	463.4	457.9	451.3	434.0	427.3	422.9	419.1	414.1
62.5°	422.4	420.3	418.2	414.5	411.7	408.1	396.2	393.1	390.8	388.9	385.9
65°	381.9	380.3	379.2	376.7	375.3	373.2	363.0	360.9	359.5	358.8	357.0
67.5°	345.0	343.4	342.7	340.9	340.3	339.0	330.6	329.5	329.0	329.3	328.6
70°	310.6	309.9	310.2	310.0	310.8	311.0	306.0	305.9	306.4	307.5	307.6
72.5°	289.9	289.9	290.3	290.5	291.2	291.6	287.4	287.2	287.4	288.2	288.2
75°	270.3	270.6	271.6	272.0	272.9	273.1	267.5	266.9	266.9	267.6	267.5
77.5°	243.1	244.3	246.2	247.3	249.1	249.3	243.2	242.4	242.4	243.2	242.5
80°	212.2	214.4	217.7	220.0	222.6	223.6	217.2	215.7	214.3	214.1	212.8
82.5°	179.5	182.2	186.1	188.1	190.9	191.5	180.8	178.7	177.5	177.6	176.5
85°	136.9	139.0	142.6	143.7	145.5	145.3	133.0	127.8	129.2	127.1	128.8
87.5°	85.9	87.1	89.4	89.6	90.5	90.3	77.9	75.5	74.8	74.9	74.0
90°	60.1	62.1	65.2	66.5	69.0	70.0	61.2	61.2	59.3	58.7	56.6
92.5°	37.5	40.2	43.0	45.8	48.5	51.3	52.8	55.3	52.5	49.5	46.8
95°	45.0	49.6	54.1	58.7	63.3	67.8	72.3	76.9	72.6	68.3	64.1
97.5°	50.6	56.0	61.4	66.7	72.1	77.5	82.8	88.2	83.7	79.0	74.5
100°	66.7	76.7	86.6	96.6	106.7	116.6	126.7	136.7	127.9	119.0	110.3
102.5°	139.6	160.9	182.2	203.3	224.6	245.9	267.1	288.4	268.3	248.1	227.9
105°	271.5	305.9	340.3	374.8	409.1	443.6	478.2	512.5	480.4	448.0	415.8
107.5°	430.9	465.8	500.7	535.5	570.5	605.4	640.5	675.5	644.0	612.6	581.2
110°	529.7	555.1	580.7	606.2	631.7	657.2	683.0	708.5	689.6	670.8	651.8



TEST NUMBER: P1444716
 CATALOG NUMBER: EHBR1-12-UNV-TA-L935-UPL18

CANDELA DISTRIBUTION (continued):

	27.5°	30°	32.5°	35°	37.5°	40°	42.5°	45°	47.5°	50°	52.5°
112.5°	551.1	569.5	587.8	606.0	624.2	642.5	661.1	679.4	670.0	660.5	651.2
115°	520.9	533.2	545.5	557.8	570.3	582.5	595.2	607.7	604.7	601.7	598.9
117.5°	468.2	475.2	482.2	489.1	495.9	502.9	510.4	517.4	518.1	518.7	519.3
120°	412.3	415.3	418.3	421.4	424.3	427.2	430.9	434.0	436.7	439.3	442.0
122.5°	364.4	365.7	366.9	368.1	369.2	370.4	372.3	373.8	375.6	377.6	379.5
125°	325.6	326.4	327.1	327.7	328.3	329.1	330.5	331.3	331.6	331.8	332.1
127.5°	299.4	299.7	299.9	300.2	300.4	300.6	301.6	302.1	301.2	300.3	299.4
130°	280.1	280.4	280.9	281.3	281.8	282.1	283.5	284.1	282.4	280.6	278.9
132.5°	267.0	267.5	268.0	268.6	269.1	269.6	271.1	271.8	269.9	267.7	265.7
135°	255.9	256.6	257.1	257.8	258.3	259.1	260.8	261.6	259.7	257.7	255.7
137.5°	246.3	247.1	247.7	248.3	248.9	249.6	251.4	252.3	250.8	249.2	247.7
140°	238.1	238.8	239.5	240.4	241.1	241.9	243.9	244.9	243.8	242.4	241.3
142.5°	229.8	230.8	231.7	232.7	233.7	234.7	237.0	238.3	237.5	236.6	235.8
145°	224.0	225.2	226.3	227.4	228.5	229.7	232.2	233.7	233.2	232.7	232.1
147.5°	218.9	219.9	220.9	221.9	223.0	224.1	226.6	228.0	227.8	227.5	227.1
150°	213.6	214.7	215.7	216.7	217.9	219.0	221.8	223.3	223.0	222.9	222.6
152.5°	208.1	209.0	209.9	210.9	211.8	212.9	216.1	217.6	217.3	217.1	216.9
155°	204.2	205.0	205.7	206.5	207.2	208.1	211.4	212.7	212.6	212.5	212.4
157.5°	202.4	202.9	203.4	204.0	204.6	205.2	208.5	209.7	209.6	209.5	209.4
160°	200.8	201.2	201.7	202.0	202.5	203.0	206.4	207.5	207.5	207.3	207.2
162.5°	199.7	200.3	200.8	201.2	201.8	202.4	205.8	207.1	206.9	206.7	206.6
165°	199.8	200.1	200.5	200.9	201.3	201.7	204.7	205.8	205.7	205.6	205.6
167.5°	200.4	200.8	201.2	201.5	201.9	202.4	205.2	206.3	206.2	206.1	206.0
170°	201.6	201.9	202.2	202.6	202.8	203.3	205.6	206.5	206.4	206.2	206.0
172.5°	202.7	203.2	203.5	203.8	204.1	204.6	206.6	207.5	207.3	207.2	206.9
175°	202.7	202.8	203.2	203.5	203.7	204.0	205.7	206.3	206.2	206.2	206.1
177.5°	204.2	204.3	204.5	204.7	204.9	205.1	206.2	206.6	206.6	206.6	206.5
180°	205.2	205.2	205.2	205.2	205.2	205.2	205.2	205.2	205.2	205.2	205.2



TEST NUMBER: P1444716
 CATALOG NUMBER: EHBR1-12-UNV-TA-L935-UPL18

CANDELA DISTRIBUTION (continued):

	55°	57.5°	60°	62.5°	65°	67.5°	70°	72.5°	75°	77.5°	80°
0°	9606.9	9606.9	9606.9	9606.9	9606.9	9606.9	9606.9	9606.9	9606.9	9606.9	9606.9
2.5°	9627.6	9630.9	9631.5	9635.4	9635.1	9639.7	9639.0	9642.9	9640.6	9643.8	9641.1
5°	9853.7	9874.2	9884.9	9904.9	9911.3	9929.1	9934.2	9950.6	9951.2	9964.2	9961.2
7.5°	10173.4	10203.6	10221.6	10246.3	10258.8	10279.4	10288.5	10303.8	10308.7	10320.7	10321.7
10°	10364.2	10378.9	10389.2	10396.1	10402.4	10405.4	10408.8	10407.9	10408.8	10407.5	10410.5
12.5°	10289.2	10267.7	10253.6	10226.7	10211.2	10181.5	10166.9	10138.5	10128.0	10103.6	10100.0
15°	9908.9	9834.2	9781.5	9704.7	9656.4	9580.9	9536.8	9468.6	9437.5	9383.3	9369.1
17.5°	9215.7	9077.1	8969.8	8832.2	8736.7	8608.0	8527.1	8420.6	8362.2	8276.4	8246.7
20°	8244.0	8038.9	7877.9	7686.1	7548.9	7378.0	7268.5	7130.5	7050.3	6944.8	6902.1
22.5°	7103.1	6847.7	6646.7	6420.2	6254.6	6064.1	5932.9	5783.6	5696.4	5581.8	5531.1
25°	5927.2	5645.5	5422.0	5183.4	5008.5	4817.5	4686.4	4539.6	4449.4	4340.6	4290.2
27.5°	4802.5	4517.4	4301.4	4079.6	3919.1	3746.8	3628.5	3500.3	3420.3	3327.4	3280.0
30°	3810.1	3558.6	3374.8	3190.7	3057.2	2917.3	2818.9	2712.7	2642.5	2563.0	2517.8
32.5°	3001.5	2807.4	2663.4	2517.3	2408.1	2291.1	2206.2	2112.5	2049.0	1978.1	1937.2
35°	2377.2	2226.3	2111.6	1991.2	1897.4	1797.8	1722.9	1642.0	1585.2	1524.0	1488.7
37.5°	1878.2	1758.3	1663.8	1563.9	1486.8	1404.3	1376.4	1283.7	1224.7	1176.0	1142.2
40°	1474.1	1378.6	1300.5	1224.1	1161.2	1098.7	1048.4	998.8	960.7	925.8	901.7
42.5°	1151.1	1082.0	1024.9	969.0	923.1	877.5	841.1	806.9	781.3	758.5	742.9
45°	915.0	867.5	827.8	788.4	756.1	725.7	701.1	679.4	662.8	649.1	639.4
47.5°	751.7	719.2	691.3	664.6	642.7	622.7	606.3	601.0	583.1	571.2	566.6
50°	638.9	619.2	598.0	578.3	563.6	549.1	538.5	528.0	521.3	515.8	514.2
52.5°	554.7	539.6	527.8	515.3	505.7	495.3	488.0	481.0	477.4	474.5	474.1
55°	492.0	481.5	473.6	465.3	459.5	453.4	449.6	446.0	444.4	442.9	443.0
57.5°	444.6	437.6	432.5	427.2	424.0	421.1	420.1	419.2	419.6	419.9	420.7
60°	410.1	405.5	402.3	399.2	397.9	397.0	397.7	398.5	400.2	401.5	402.8
62.5°	383.6	381.0	379.5	377.8	377.7	377.8	379.1	380.6	382.7	384.2	385.4
65°	356.4	354.9	354.4	353.4	353.8	354.2	355.9	357.0	359.1	360.4	361.8
67.5°	328.9	328.5	328.8	328.8	329.8	330.6	332.3	333.4	335.3	336.4	337.6
70°	308.5	308.7	309.4	309.6	310.6	311.1	312.6	313.4	314.9	315.9	317.4
72.5°	288.8	288.5	288.7	288.2	288.6	288.4	289.2	289.6	290.9	291.7	293.5
75°	267.7	266.8	266.6	265.6	265.7	265.0	265.4	265.3	266.2	266.6	267.8
77.5°	242.4	240.8	240.1	238.5	238.5	237.9	238.5	238.9	240.4	241.3	242.7
80°	211.9	209.5	208.5	206.6	207.0	206.8	208.5	209.6	211.5	211.9	213.7
82.5°	176.1	173.7	172.6	170.8	171.2	171.3	172.7	172.9	174.6	175.3	177.5
85°	126.1	127.1	124.5	124.7	124.2	125.2	126.1	127.3	128.7	131.1	132.8
87.5°	74.2	74.0	74.9	75.0	76.2	76.9	78.9	80.1	82.5	84.3	87.6
90°	55.5	53.3	52.9	51.5	51.7	50.3	50.7	49.2	49.8	49.0	50.0
92.5°	43.7	41.0	38.0	35.2	32.2	29.5	27.9	26.6	25.3	24.1	22.6
95°	59.8	55.6	51.4	47.1	43.0	38.7	37.2	35.6	34.1	32.5	30.9
97.5°	70.0	65.3	60.8	56.2	51.7	47.1	46.1	45.0	44.0	43.1	42.0
100°	101.5	92.7	83.9	75.1	66.3	57.6	56.7	55.9	55.1	54.3	53.4
102.5°	207.8	187.5	167.4	147.3	127.2	106.9	103.4	100.0	96.4	92.9	89.5
105°	383.6	351.3	319.1	286.9	254.6	222.4	212.8	203.1	193.5	183.9	174.4
107.5°	549.8	518.2	486.9	455.4	424.1	392.6	377.5	362.3	347.0	331.8	316.7
110°	633.0	614.1	595.4	576.3	557.6	538.8	524.3	509.8	495.3	480.8	466.4



TEST NUMBER: P1444716
 CATALOG NUMBER: EHBR1-12-UNV-TA-L935-UPL18

CANDELA DISTRIBUTION (continued):

	55°	57.5°	60°	62.5°	65°	67.5°	70°	72.5°	75°	77.5°	80°
112.5°	641.7	632.3	622.9	613.6	604.2	594.8	587.8	580.7	573.7	566.5	559.5
115°	595.9	592.9	589.9	587.1	584.2	581.2	580.8	580.3	579.8	579.4	578.9
117.5°	519.9	520.6	521.2	522.0	522.6	523.2	527.0	530.9	534.7	538.5	542.5
120°	444.6	447.2	449.9	452.6	455.2	458.0	463.0	468.2	473.4	478.5	483.8
122.5°	381.4	383.2	385.1	387.1	389.0	390.9	396.0	401.1	406.2	411.3	416.6
125°	332.3	332.5	332.8	332.9	333.2	333.4	337.7	341.9	346.1	350.5	354.6
127.5°	298.5	297.5	296.5	295.6	294.6	293.7	296.3	298.8	301.4	304.0	306.5
130°	277.1	275.4	273.5	271.8	270.0	268.3	269.4	270.4	271.4	272.6	273.7
132.5°	263.7	261.5	259.4	257.3	255.1	253.1	253.2	253.3	253.5	253.6	253.9
135°	253.7	251.8	249.8	247.7	245.7	243.8	243.3	243.0	242.6	242.3	241.8
137.5°	246.2	244.6	243.0	241.4	239.9	238.4	237.7	237.1	236.5	235.9	235.4
140°	240.1	238.8	237.5	236.4	235.0	233.9	233.4	232.9	232.3	231.9	231.5
142.5°	234.8	233.9	233.0	232.2	231.3	230.4	229.9	229.4	228.9	228.6	228.0
145°	231.6	231.0	230.4	229.9	229.3	228.8	228.4	228.1	227.8	227.5	227.1
147.5°	226.9	226.5	226.2	225.9	225.5	225.2	225.0	224.8	224.5	224.4	224.1
150°	222.2	221.9	221.6	221.3	221.1	220.8	220.6	220.5	220.4	220.4	220.3
152.5°	216.6	216.3	216.0	215.8	215.4	215.2	215.1	215.1	215.0	214.9	214.9
155°	212.2	212.1	211.9	211.7	211.5	211.4	211.3	211.1	210.9	210.7	210.5
157.5°	209.3	209.1	208.9	208.8	208.6	208.5	208.3	208.2	208.0	207.9	207.7
160°	207.0	206.9	206.7	206.6	206.5	206.4	206.1	205.8	205.6	205.4	205.0
162.5°	206.3	205.9	205.7	205.6	205.3	205.1	204.9	204.7	204.6	204.5	204.3
165°	205.4	205.3	205.1	204.9	204.8	204.7	204.5	204.2	203.9	203.7	203.4
167.5°	205.8	205.7	205.6	205.5	205.3	205.2	205.0	204.7	204.5	204.3	203.9
170°	205.8	205.5	205.4	205.1	204.9	204.6	204.5	204.3	204.0	203.8	203.5
172.5°	206.8	206.6	206.4	206.2	206.0	205.8	205.6	205.5	205.3	205.1	204.8
175°	206.0	206.0	206.0	205.8	205.8	205.7	205.6	205.6	205.6	205.6	205.5
177.5°	206.5	206.5	206.5	206.4	206.4	206.4	206.2	206.1	205.9	205.7	205.6
180°	205.2	205.2	205.2	205.2	205.2	205.2	205.2	205.2	205.2	205.2	205.2



TEST NUMBER: P1444716
 CATALOG NUMBER: EHBR1-12-UNV-TA-L935-UPL18

CANDELA DISTRIBUTION (continued):

	82.5°	85°	87.5°	90°	92.5°	95°	97.5°	100°	102.5°	105°	107.5°
0°	9606.9	9606.9	9606.9	9606.9	9606.9	9606.9	9606.9	9606.9	9606.9	9606.9	9606.9
2.5°	9643.9	9641.4	9642.6	9638.1	9639.2	9633.7	9633.2	9627.0	9626.5	9620.7	9618.5
5°	9970.4	9965.0	9971.1	9961.6	9963.5	9951.2	9950.2	9934.3	9928.8	9909.0	9900.4
7.5°	10329.3	10327.3	10331.0	10323.1	10322.8	10311.9	10307.3	10293.1	10284.2	10263.4	10250.0
10°	10407.9	10409.7	10406.7	10407.5	10403.2	10402.0	10397.7	10394.9	10387.7	10382.3	10374.3
12.5°	10081.5	10083.4	10070.9	10078.8	10072.6	10087.2	10086.0	10103.1	10105.8	10127.5	10135.8
15°	9326.9	9324.6	9300.7	9315.8	9307.6	9339.6	9346.8	9389.8	9412.8	9468.1	9502.0
17.5°	8187.1	8181.0	8147.4	8165.7	8156.3	8203.5	8219.3	8288.1	8331.0	8420.0	8483.4
20°	6828.5	6816.7	6777.3	6798.8	6789.2	6842.8	6865.4	6948.5	7003.7	7121.7	7205.5
22.5°	5452.9	5434.3	5395.7	5415.9	5406.7	5462.2	5491.6	5575.0	5638.4	5759.4	5857.2
25°	4217.7	4201.1	4163.9	4177.9	4174.6	4221.4	4247.6	4326.5	4388.7	4504.0	4597.4
27.5°	3216.9	3199.7	3166.0	3176.0	3172.5	3212.5	3237.1	3303.0	3356.7	3453.7	3535.7
30°	2462.1	2441.3	2412.7	2418.2	2415.9	2448.3	2471.3	2526.8	2572.7	2654.7	2725.4
32.5°	1887.2	1866.3	1840.0	1842.6	1839.1	1864.6	1883.5	1931.7	1971.8	2041.5	2103.0
35°	1444.0	1468.4	1412.4	1447.9	1411.0	1465.2	1445.7	1475.9	1510.3	1569.0	1620.3
37.5°	1110.1	1093.0	1078.6	1077.1	1077.0	1089.6	1104.5	1133.5	1163.8	1207.6	1252.8
40°	879.7	867.7	858.4	857.7	858.4	867.4	878.3	898.4	920.6	952.0	985.3
42.5°	729.6	721.7	716.0	715.6	717.5	723.8	731.4	743.3	757.8	778.2	800.9
45°	631.4	627.1	623.9	623.7	624.6	627.9	632.3	639.7	648.8	661.5	676.0
47.5°	562.6	561.6	559.6	559.7	558.8	560.1	560.7	564.8	569.6	579.2	598.1
50°	512.5	512.5	511.2	511.1	509.8	509.7	508.6	510.3	512.5	518.5	524.5
52.5°	472.8	472.7	471.3	471.0	469.7	469.6	468.7	469.3	469.6	472.6	476.2
55°	441.9	440.9	439.0	438.4	437.9	438.7	438.3	438.4	437.9	439.2	440.3
57.5°	419.6	418.5	416.6	416.1	416.0	416.9	416.9	416.6	414.9	413.8	412.2
60°	402.0	400.9	398.9	398.4	398.7	400.0	399.9	398.9	396.3	394.2	391.6
62.5°	384.8	384.3	383.3	383.2	382.9	383.1	382.3	381.1	378.7	376.3	373.6
65°	361.6	361.9	361.2	361.3	360.4	360.2	358.8	357.7	355.3	353.2	350.4
67.5°	337.6	337.8	337.2	337.2	336.7	336.8	335.9	334.9	332.8	331.1	328.9
70°	317.8	318.2	317.8	317.9	317.4	317.2	315.9	314.9	312.8	311.3	309.3
72.5°	294.0	295.0	295.0	295.3	294.4	294.0	292.5	291.2	289.2	288.1	286.6
75°	268.4	269.7	270.1	270.7	269.5	268.9	267.2	266.2	264.6	263.9	262.9
77.5°	243.3	244.9	246.3	247.7	245.7	244.0	241.9	240.3	238.0	237.1	235.5
80°	215.3	218.0	221.1	223.9	220.3	216.8	213.3	210.8	207.7	206.5	204.5
82.5°	178.5	181.4	183.2	184.9	182.4	179.9	176.6	174.3	171.0	169.8	167.5
85°	135.7	139.1	140.2	141.1	139.6	138.2	135.0	130.8	128.8	125.5	123.8
87.5°	89.2	91.3	91.7	92.0	91.0	90.4	88.4	86.4	82.8	80.2	77.1
90°	48.9	49.4	47.6	47.2	46.9	47.9	46.8	46.9	44.9	44.7	43.0
92.5°	21.3	19.9	18.6	17.2	18.8	19.9	21.4	22.6	24.0	25.3	26.6
95°	29.4	27.8	26.3	24.7	26.0	27.2	28.5	29.7	30.9	32.2	33.4
97.5°	41.0	40.0	38.9	37.9	38.6	39.3	40.1	40.8	41.4	42.1	43.0
100°	52.6	51.8	50.9	50.1	50.1	50.1	50.1	50.1	50.1	50.1	50.1
102.5°	85.9	82.4	78.9	75.4	77.8	80.1	82.5	84.8	87.3	89.6	92.1
105°	164.8	155.2	145.6	135.9	145.2	154.5	163.8	173.1	182.4	191.8	201.0
107.5°	301.4	286.3	271.1	255.9	272.9	289.8	306.7	323.7	340.6	357.5	374.5
110°	451.9	437.5	423.0	408.6	426.5	444.5	462.4	480.4	498.4	516.3	534.4



TEST NUMBER: P1444716
 CATALOG NUMBER: EHBR1-12-UNV-TA-L935-UPL18

CANDELA DISTRIBUTION (continued):

	82.5°	85°	87.5°	90°	92.5°	95°	97.5°	100°	102.5°	105°	107.5°
112.5°	552.4	545.4	538.4	531.4	543.0	554.5	566.1	577.7	589.3	600.9	612.5
115°	578.5	578.1	577.7	577.2	582.7	588.2	593.6	599.1	604.7	610.1	615.7
117.5°	546.3	550.2	554.2	558.1	559.8	561.7	563.4	565.1	567.0	568.7	570.5
120°	489.0	494.1	499.4	504.6	503.9	503.2	502.5	501.7	501.3	500.6	500.0
122.5°	421.8	427.0	432.2	437.5	435.9	434.4	432.9	431.3	429.9	428.3	427.0
125°	359.1	363.4	367.8	372.2	370.7	369.1	367.6	366.2	364.7	363.3	361.9
127.5°	309.2	312.0	314.7	317.4	316.7	315.9	315.3	314.7	314.1	313.5	313.0
130°	275.0	276.2	277.4	278.7	278.9	279.1	279.4	279.7	280.1	280.3	280.8
132.5°	254.1	254.4	254.7	255.0	255.9	256.7	257.6	258.5	259.6	260.5	261.6
135°	241.6	241.4	241.2	241.0	242.3	243.4	244.7	246.1	247.4	248.9	250.4
137.5°	234.8	234.4	233.9	233.6	234.8	236.0	237.4	238.6	240.0	241.4	243.0
140°	231.1	230.7	230.5	230.1	231.4	232.6	233.8	235.2	236.6	238.0	239.5
142.5°	227.7	227.3	226.9	226.7	227.9	228.9	230.2	231.3	232.7	233.8	235.2
145°	226.9	226.6	226.4	226.2	226.9	227.8	228.7	229.6	230.6	231.5	232.5
147.5°	224.0	223.9	223.8	223.7	224.3	225.0	225.6	226.2	226.9	227.6	228.4
150°	220.4	220.3	220.2	220.3	220.7	221.1	221.5	221.9	222.4	222.8	223.4
152.5°	214.9	214.8	214.9	214.9	215.3	215.6	216.1	216.3	216.9	217.2	217.8
155°	210.5	210.4	210.3	210.2	210.3	210.5	210.7	210.8	211.1	211.3	211.4
157.5°	207.6	207.5	207.5	207.3	207.3	207.3	207.4	207.4	207.5	207.5	207.6
160°	204.9	204.6	204.4	204.2	204.3	204.4	204.6	204.6	204.8	204.9	205.1
162.5°	204.2	204.0	203.9	203.7	203.7	203.6	203.5	203.4	203.3	203.2	203.2
165°	203.2	202.8	202.7	202.4	202.4	202.4	202.5	202.5	202.5	202.5	202.6
167.5°	203.7	203.5	203.3	203.0	202.9	202.7	202.6	202.3	202.1	201.9	201.8
170°	203.3	203.1	202.9	202.7	202.7	202.6	202.6	202.4	202.4	202.4	202.4
172.5°	204.6	204.5	204.3	204.1	204.0	204.0	203.9	203.9	203.8	203.8	203.8
175°	205.4	205.4	205.3	205.2	205.1	205.0	204.8	204.7	204.6	204.5	204.3
177.5°	205.6	205.3	205.2	205.1	205.1	205.1	205.1	205.1	205.1	205.0	205.0
180°	205.2	205.2	205.2	205.2	205.2	205.2	205.2	205.2	205.2	205.2	205.2



TEST NUMBER: P1444716
 CATALOG NUMBER: EHBR1-12-UNV-TA-L935-UPL18

CANDELA DISTRIBUTION (continued):

	110°	112.5°	115°	117.5°	120°	122.5°	125°	127.5°	130°	132.5°	135°
0°	9606.9	9606.9	9606.9	9606.9	9606.9	9606.9	9606.9	9606.9	9606.9	9606.9	9606.9
2.5°	9612.3	9609.7	9603.0	9599.7	9593.6	9590.5	9585.7	9582.6	9578.7	9575.8	9574.4
5°	9878.5	9866.3	9841.6	9826.5	9799.9	9782.4	9755.9	9736.6	9709.3	9689.2	9663.4
7.5°	10225.0	10206.2	10174.6	10150.7	10113.5	10085.1	10043.3	10009.9	9963.7	9925.5	9878.4
10°	10366.1	10355.1	10340.9	10325.5	10305.0	10284.8	10256.2	10227.2	10188.4	10149.9	10099.6
12.5°	10157.6	10168.0	10188.4	10197.9	10213.6	10218.9	10226.0	10222.7	10216.4	10200.6	10177.8
15°	9567.1	9610.4	9678.8	9726.0	9792.3	9838.8	9900.4	9940.0	9985.7	10012.9	10038.9
17.5°	8595.8	8679.5	8800.1	8896.3	9025.5	9130.5	9259.2	9360.4	9477.1	9566.7	9662.0
20°	7351.6	7468.8	7635.3	7776.8	7963.9	8122.7	8326.1	8496.5	8695.1	8860.8	9039.6
22.5°	6012.6	6150.3	6341.2	6511.8	6735.3	6935.0	7189.8	7415.1	7683.8	7924.5	8190.7
25°	4749.3	4884.4	5078.8	5255.3	5496.7	5716.7	5995.1	6253.5	6565.3	6856.0	7189.8
27.5°	3666.0	3786.0	3956.9	4115.8	4336.9	4552.9	4835.4	5110.9	5443.6	5756.1	6115.8
30°	2831.2	2928.5	3065.5	3193.4	3370.8	3547.4	3799.1	4053.9	4384.9	4708.7	5077.5
32.5°	2194.1	2277.1	2391.3	2495.2	2631.9	2765.1	2950.4	3154.0	3444.4	3754.6	4111.2
35°	1698.5	1769.4	1866.8	1956.2	2068.6	2174.3	2312.6	2458.0	2679.6	2940.5	3259.6
37.5°	1354.1	1383.1	1452.5	1525.7	1619.2	1706.0	1814.2	1921.7	2080.2	2286.0	2546.8
40°	1029.8	1075.7	1132.3	1190.0	1260.7	1330.4	1449.0	1506.1	1610.5	1758.4	1960.7
42.5°	830.9	863.2	903.0	943.1	992.4	1040.9	1100.9	1162.1	1240.1	1340.2	1484.1
45°	695.3	716.4	742.0	768.7	801.1	834.3	874.4	916.4	969.3	1030.9	1118.2
47.5°	604.7	616.4	633.2	651.4	673.6	696.5	722.6	749.4	782.3	818.7	868.5
50°	534.0	543.7	556.8	569.0	584.3	607.8	618.1	632.9	652.6	674.1	702.0
52.5°	482.9	489.3	497.5	504.6	514.2	523.0	534.6	544.7	558.4	571.3	589.3
55°	443.0	445.4	450.0	454.5	461.2	467.2	475.1	481.8	490.5	498.2	509.5
57.5°	412.3	412.5	414.6	417.0	421.3	425.1	430.5	434.9	440.9	445.8	452.6
60°	390.2	389.0	389.4	390.3	392.6	395.1	398.6	401.4	405.2	408.0	411.8
62.5°	371.8	369.9	369.5	369.2	370.5	371.3	373.2	374.6	376.8	378.0	380.0
65°	348.5	346.3	345.5	344.5	344.9	344.6	345.2	345.3	346.4	346.7	347.8
67.5°	327.5	325.6	324.5	323.1	322.6	321.6	321.1	320.2	320.1	319.3	319.1
70°	308.2	306.4	305.5	304.3	303.6	302.4	301.5	300.0	299.0	297.5	296.7
72.5°	285.9	284.9	284.7	283.8	283.6	282.9	282.6	281.4	280.8	279.6	278.9
75°	262.7	261.8	261.8	260.9	260.8	260.0	259.8	258.7	258.0	256.8	256.2
77.5°	235.0	233.7	233.4	232.4	232.7	232.3	232.6	231.7	231.3	230.1	229.7
80°	203.8	202.2	201.6	200.3	200.7	200.0	200.7	200.6	201.0	200.0	199.8
82.5°	166.9	165.1	164.8	163.9	164.5	164.6	165.9	165.1	165.5	164.5	165.0
85°	121.4	120.1	118.4	118.1	116.9	118.1	116.6	117.6	115.9	117.1	115.6
87.5°	75.2	72.6	71.2	69.3	68.6	66.8	66.1	64.8	65.2	64.5	64.9
90°	43.2	41.8	42.8	42.3	43.7	43.4	45.0	45.3	47.2	47.4	49.3
92.5°	27.9	29.3	31.7	34.3	36.7	39.2	41.7	44.2	46.6	49.2	51.6
95°	34.6	35.9	39.2	42.5	45.8	49.1	52.5	55.8	59.1	62.4	65.7
97.5°	43.7	44.4	47.7	51.0	54.3	57.6	60.9	64.3	67.6	71.0	74.2
100°	50.1	50.2	59.6	69.0	78.4	87.8	97.2	106.6	116.1	125.4	134.9
102.5°	94.4	96.8	120.5	144.3	168.0	191.8	215.6	239.4	263.1	286.9	310.7
105°	210.4	219.6	255.9	292.2	328.4	364.6	400.9	437.2	473.4	509.7	546.0
107.5°	391.4	408.4	441.2	473.9	506.6	539.4	572.3	605.0	637.8	670.5	703.4
110°	552.3	570.3	592.2	614.1	636.1	658.1	679.9	702.0	723.9	745.9	767.9



TEST NUMBER: P1444716
 CATALOG NUMBER: EHBR1-12-UNV-TA-L935-UPL18

CANDELA DISTRIBUTION (continued):

	110°	112.5°	115°	117.5°	120°	122.5°	125°	127.5°	130°	132.5°	135°
112.5°	624.0	635.7	648.4	661.2	673.9	686.7	699.5	712.3	725.2	737.9	750.8
115°	621.2	626.7	631.6	636.6	641.6	646.5	651.6	656.5	661.6	666.5	671.6
117.5°	572.4	574.3	575.0	575.8	576.5	577.3	578.1	578.9	579.7	580.6	581.3
120°	499.3	498.7	497.8	496.9	496.1	495.2	494.4	493.6	492.8	492.0	491.2
122.5°	425.5	424.2	423.3	422.4	421.6	420.9	420.1	419.4	418.6	417.8	417.1
125°	360.5	359.2	359.8	360.4	361.2	361.8	362.5	363.3	364.0	364.6	365.4
127.5°	312.4	312.0	313.7	315.6	317.4	319.2	321.1	323.0	324.8	326.7	328.5
130°	281.2	281.6	284.0	286.4	288.7	291.1	293.6	296.0	298.3	300.7	303.2
132.5°	262.6	263.7	265.9	268.2	270.5	272.9	275.2	277.5	279.8	282.1	284.4
135°	251.8	253.3	255.4	257.5	259.6	261.7	263.8	265.9	267.9	270.2	272.2
137.5°	244.3	245.9	247.6	249.2	250.9	252.7	254.2	255.9	257.6	259.3	260.9
140°	240.8	242.4	243.3	244.3	245.1	246.1	247.0	248.0	248.7	249.7	250.6
142.5°	236.5	237.9	238.4	239.1	239.5	240.3	240.8	241.4	241.9	242.5	243.1
145°	233.4	234.5	234.5	234.5	234.5	234.6	234.5	234.6	234.5	234.5	234.5
147.5°	229.1	229.9	229.8	229.7	229.6	229.3	229.2	229.0	228.8	228.7	228.6
150°	223.8	224.4	224.0	223.9	223.5	223.2	222.9	222.6	222.2	222.1	221.7
152.5°	218.2	218.7	218.2	218.0	217.6	217.3	216.9	216.6	216.3	215.9	215.6
155°	211.7	211.9	211.7	211.5	211.4	211.2	210.9	210.8	210.7	210.4	210.4
157.5°	207.6	207.7	207.6	207.5	207.4	207.4	207.2	207.1	207.1	207.1	207.1
160°	205.2	205.4	205.2	205.1	205.0	204.9	204.7	204.7	204.7	204.7	204.7
162.5°	203.1	203.0	202.9	202.8	202.7	202.7	202.6	202.6	202.5	202.5	202.5
165°	202.7	202.7	202.5	202.3	202.1	201.9	201.7	201.7	201.6	201.4	201.3
167.5°	201.7	201.6	201.6	201.7	201.7	201.7	201.7	201.8	201.9	202.0	202.1
170°	202.3	202.4	202.2	202.2	202.0	201.9	201.8	201.8	201.7	201.7	201.7
172.5°	203.8	203.8	203.7	203.4	203.2	203.0	202.7	202.7	202.5	202.2	202.0
175°	204.2	204.1	204.0	203.9	203.8	203.7	203.5	203.4	203.3	203.2	203.1
177.5°	205.0	204.9	204.8	204.8	204.8	204.8	204.8	204.7	204.7	204.7	204.6
180°	205.2	205.2	205.2	205.2	205.2	205.2	205.2	205.2	205.2	205.2	205.2



TEST NUMBER: P1444716
 CATALOG NUMBER: EHBR1-12-UNV-TA-L935-UPL18

CANDELA DISTRIBUTION (continued):

	137.5°	140°	142.5°	145°	147.5°	150°	152.5°	155°	157.5°	160°	162.5°
0°	9606.9	9606.9	9606.9	9606.9	9606.9	9606.9	9606.9	9606.9	9606.9	9606.9	9606.9
2.5°	9572.5	9572.3	9571.4	9571.8	9572.0	9572.6	9573.5	9574.4	9574.6	9575.2	9575.4
5°	9644.1	9620.4	9602.8	9583.6	9569.1	9556.1	9547.4	9540.5	9537.8	9538.5	9540.1
7.5°	9838.3	9789.4	9749.1	9703.3	9665.0	9624.5	9591.0	9559.1	9535.8	9518.4	9508.8
10°	10051.5	9991.9	9935.0	9868.7	9805.7	9738.5	9677.6	9616.3	9565.3	9520.9	9488.4
12.5°	10146.1	10104.0	10054.7	9992.1	9924.8	9847.3	9769.0	9685.0	9607.0	9534.6	9476.1
15°	10045.9	10046.0	10028.1	9998.0	9951.2	9889.3	9814.6	9727.2	9635.1	9541.2	9455.4
17.5°	9728.0	9788.0	9821.3	9842.5	9835.9	9813.2	9765.7	9698.5	9612.7	9512.6	9407.8
20°	9182.0	9323.5	9424.4	9515.1	9565.9	9599.7	9596.3	9568.9	9507.8	9422.7	9313.6
22.5°	8417.2	8654.6	8842.0	9016.8	9139.3	9239.0	9286.4	9306.5	9278.8	9219.5	9117.1
25°	7488.2	7811.0	8086.6	8354.0	8554.6	8727.0	8830.6	8903.6	8909.4	8878.4	8787.0
27.5°	6455.9	6837.0	7185.7	7541.2	7823.3	8071.1	8233.7	8352.7	8390.5	8385.5	8302.5
30°	5424.9	5825.1	6209.4	6623.9	6972.9	7289.6	7504.4	7665.4	7727.4	7739.2	7659.5
32.5°	4451.3	4845.9	5229.2	5662.5	6046.6	6409.5	6663.2	6854.5	6926.6	6943.6	6856.0
35°	3567.7	3931.7	4296.0	4715.9	5097.8	5473.6	5741.0	5941.2	6008.5	6019.9	5918.5
37.5°	2801.4	3111.5	3428.9	3805.8	4156.4	4509.3	4763.5	4951.5	5000.7	4997.6	4882.9
40°	2156.2	2397.2	2652.4	2962.5	3254.2	3552.4	3767.0	3922.5	3948.3	3929.2	3808.8
42.5°	1621.3	1795.4	1980.4	2211.9	2428.3	2651.6	2807.6	2923.1	2926.8	2896.6	2788.4
45°	1207.9	1377.8	1455.3	1595.3	1734.7	1883.2	1978.4	2049.8	2038.8	2012.1	1929.9
47.5°	920.8	986.1	1055.3	1142.2	1223.4	1391.8	1379.3	1493.8	1411.3	1467.6	1343.8
50°	731.2	767.7	805.0	851.1	893.5	937.5	965.1	985.6	982.9	974.1	950.4
52.5°	622.1	633.3	651.7	677.9	701.6	725.4	741.1	753.9	754.1	750.5	738.6
55°	520.0	534.3	547.4	564.6	593.7	598.3	620.7	616.1	617.9	611.7	618.0
57.5°	458.4	466.8	474.2	484.3	492.8	502.7	508.5	514.0	513.5	512.3	506.2
60°	414.8	419.4	423.5	429.5	434.1	439.7	442.4	445.2	444.3	442.2	436.8
62.5°	381.2	384.1	386.5	390.3	393.1	396.5	398.0	399.1	398.0	396.0	391.2
65°	348.0	349.9	351.4	354.3	356.3	359.3	360.4	361.5	360.4	358.9	355.3
67.5°	318.1	318.3	318.2	319.4	319.9	321.7	322.3	323.1	321.8	320.5	317.4
70°	295.5	295.0	294.5	294.9	295.0	295.9	296.0	295.9	294.4	292.0	288.7
72.5°	277.8	277.5	277.1	277.4	277.4	278.2	278.0	277.6	275.7	273.5	270.2
75°	255.0	254.8	254.0	254.0	253.2	253.5	252.6	252.1	250.0	248.1	245.1
77.5°	228.3	227.9	226.6	226.1	224.8	224.2	222.5	221.6	219.5	218.0	215.4
80°	198.5	198.0	196.5	195.6	193.4	192.1	189.5	188.1	185.6	184.2	181.6
82.5°	164.1	164.3	162.7	161.6	158.5	156.2	152.7	150.9	148.2	146.7	144.2
85°	116.7	115.0	115.9	115.8	113.9	111.9	109.1	107.1	104.9	103.5	101.7
87.5°	64.0	64.4	64.0	63.5	62.2	61.2	59.0	57.8	56.2	55.4	54.0
90°	46.1	44.5	41.3	39.8	36.7	34.5	31.2	29.2	26.0	25.2	23.4
92.5°	48.8	46.0	43.3	40.4	37.8	35.0	32.2	29.5	26.6	25.6	24.7
95°	61.7	57.6	53.7	49.6	45.6	41.5	37.5	33.4	29.5	28.6	27.8
97.5°	69.5	64.7	60.0	55.3	50.5	45.8	41.1	36.3	31.6	31.1	30.6
100°	123.9	113.0	102.1	91.2	80.2	69.2	58.5	47.5	36.5	35.9	35.3
102.5°	284.1	257.8	231.2	204.6	178.3	151.7	125.2	98.7	72.2	68.4	64.6
105°	505.9	465.8	425.7	385.6	345.5	305.3	265.3	225.1	185.1	172.2	159.2
107.5°	665.6	627.9	590.3	552.6	514.8	477.1	439.5	401.7	363.9	341.2	318.6
110°	737.9	707.9	678.1	648.2	618.2	588.3	558.3	528.3	498.4	478.8	459.3



TEST NUMBER: P1444716
 CATALOG NUMBER: EHBR1-12-UNV-TA-L935-UPL18

CANDELA DISTRIBUTION (continued):

	137.5°	140°	142.5°	145°	147.5°	150°	152.5°	155°	157.5°	160°	162.5°
112.5°	728.8	706.8	684.9	662.9	641.0	618.9	597.0	575.1	553.0	541.2	529.3
115°	658.4	645.1	631.9	618.6	605.3	592.0	578.8	565.5	552.1	545.8	539.5
117.5°	574.6	567.7	560.9	554.0	547.2	540.4	533.6	526.6	519.8	517.6	515.3
120°	489.1	487.0	484.7	482.6	480.4	478.3	476.0	473.8	471.7	471.8	472.0
122.5°	417.8	418.5	419.2	419.7	420.4	421.0	421.7	422.3	422.9	424.4	426.1
125°	367.2	369.1	370.9	372.7	374.4	376.2	378.0	379.8	381.6	383.1	384.7
127.5°	330.6	332.7	334.8	336.8	338.9	341.0	343.0	344.9	346.9	348.3	349.8
130°	305.0	306.7	308.4	310.1	312.0	313.7	315.4	317.1	318.8	319.9	320.9
132.5°	285.9	287.5	289.1	290.6	292.1	293.7	295.3	296.7	298.4	299.1	299.8
135°	273.3	274.3	275.5	276.6	277.9	278.9	280.1	281.2	282.3	282.8	283.2
137.5°	261.9	262.7	263.7	264.6	265.5	266.4	267.3	268.2	269.2	269.3	269.5
140°	251.6	252.6	253.5	254.5	255.5	256.5	257.6	258.6	259.7	259.8	260.0
142.5°	243.8	244.4	245.3	246.0	246.8	247.5	248.3	249.1	250.0	250.1	250.3
145°	235.4	236.3	237.2	238.1	239.1	240.0	241.1	242.1	243.2	243.2	243.2
147.5°	229.3	230.1	230.9	231.7	232.6	233.4	234.3	235.2	236.2	236.2	236.2
150°	222.6	223.4	224.2	225.1	226.0	227.0	227.9	228.9	230.0	230.2	230.4
152.5°	216.5	217.4	218.3	219.3	220.4	221.5	222.6	223.6	224.7	224.9	225.1
155°	211.3	212.2	213.2	214.2	215.3	216.3	217.3	218.3	219.4	219.7	220.0
157.5°	207.9	208.7	209.6	210.5	211.4	212.4	213.3	214.3	215.2	215.4	215.6
160°	205.6	206.3	207.0	207.8	208.6	209.5	210.2	211.0	211.8	212.1	212.3
162.5°	203.3	204.1	204.8	205.6	206.4	207.2	207.9	208.7	209.5	209.7	210.0
165°	201.9	202.4	203.0	203.5	204.1	204.6	205.3	205.7	206.5	206.6	206.9
167.5°	202.6	202.9	203.4	203.8	204.3	204.7	205.2	205.6	206.1	206.4	206.6
170°	202.0	202.5	202.7	203.3	203.7	204.1	204.5	204.9	205.4	205.6	205.8
172.5°	202.3	202.6	202.8	203.1	203.4	203.7	203.9	204.3	204.6	204.8	205.0
175°	203.2	203.3	203.5	203.6	203.7	203.9	204.0	204.2	204.4	204.6	204.8
177.5°	204.7	204.8	205.0	205.1	205.3	205.4	205.6	205.7	205.8	206.1	206.5
180°	205.2	205.2	205.2	205.2	205.2	205.2	205.2	205.2	205.2	205.2	205.2



TEST NUMBER: P1444716
 CATALOG NUMBER: EHBR1-12-UNV-TA-L935-UPL18

CANDELA DISTRIBUTION (continued):

	165°	167.5°	170°	172.5°	175°	177.5°	180°	182.5°	185°	187.5°	190°
0°	9606.9	9606.9	9606.9	9606.9	9606.9	9606.9	9606.9	9606.9	9606.9	9606.9	9606.9
2.5°	9575.0	9574.9	9574.6	9574.2	9573.7	9574.0	9574.5	9575.5	9577.5	9580.3	9583.9
5°	9541.4	9543.4	9544.5	9544.6	9543.6	9543.0	9543.9	9546.5	9551.9	9560.8	9572.8
7.5°	9506.2	9508.6	9512.3	9515.1	9515.6	9514.9	9515.1	9519.2	9529.0	9546.4	9570.7
10°	9468.5	9461.4	9465.2	9472.0	9477.6	9478.6	9479.2	9484.1	9498.4	9524.6	9563.7
12.5°	9433.8	9411.1	9406.8	9413.0	9421.3	9424.0	9423.3	9425.4	9442.1	9476.8	9531.2
15°	9388.0	9345.4	9330.9	9332.5	9342.8	9346.5	9343.8	9339.6	9356.0	9398.4	9468.8
17.5°	9314.1	9245.4	9218.6	9217.5	9229.4	9232.7	9226.1	9213.2	9229.3	9282.2	9369.6
20°	9201.6	9100.2	9049.8	9041.7	9054.8	9051.0	9037.8	9018.4	9039.5	9103.8	9207.9
22.5°	8999.4	8870.9	8784.8	8757.0	8772.6	8762.2	8742.9	8718.2	8746.3	8819.2	8935.1
25°	8669.0	8520.5	8402.6	8336.4	8348.9	8330.2	8309.2	8279.2	8312.8	8396.5	8524.0
27.5°	8183.3	8011.9	7865.7	7756.2	7760.2	7735.7	7711.6	7672.8	7714.6	7813.7	7957.6
30°	7537.6	7339.1	7161.1	7012.3	6998.9	6975.2	6950.5	6899.6	6951.9	7070.6	7238.7
32.5°	6726.6	6506.2	6300.5	6112.4	6076.9	6053.7	6031.7	5973.1	6041.6	6180.0	6373.1
35°	5778.1	5543.4	5320.4	5105.5	5046.7	5023.5	5004.3	4948.1	5033.7	5184.3	5392.8
37.5°	4737.1	4497.3	4276.0	4055.6	3972.4	3941.0	3927.0	3890.2	3988.9	4137.8	4347.3
40°	3668.4	3445.4	3246.9	3052.3	2957.5	2909.4	2902.2	2895.4	2990.8	3120.0	3310.2
42.5°	2668.6	2488.7	2335.7	2186.9	2101.1	2035.3	2035.3	2055.3	2141.1	2237.9	2384.6
45°	1845.9	1725.2	1627.8	1528.3	1554.9	1423.9	1500.9	1461.4	1503.8	1566.2	1661.6
47.5°	1269.0	1203.0	1149.5	1093.9	1053.4	1014.7	1018.2	1043.1	1083.1	1120.0	1169.7
50°	924.8	891.3	864.0	835.2	815.0	797.9	798.9	809.7	830.7	850.2	876.1
52.5°	724.7	706.1	691.3	675.4	664.8	656.4	656.8	662.1	673.4	684.6	699.4
55°	597.3	595.1	575.8	561.5	556.0	550.3	551.4	553.4	561.2	567.6	577.5
57.5°	500.6	491.9	486.1	478.5	475.1	471.1	472.0	472.8	478.0	482.3	489.4
60°	432.2	426.1	422.0	416.8	414.6	412.0	412.7	413.1	416.4	419.3	424.3
62.5°	386.8	381.3	377.8	373.8	372.2	370.5	370.9	371.1	373.1	375.2	379.0
65°	352.0	347.7	344.7	341.2	339.6	337.8	338.0	338.0	339.8	341.2	344.1
67.5°	315.1	311.9	310.0	307.2	306.2	304.3	304.3	303.7	304.9	305.4	307.4
70°	285.6	282.3	279.9	277.2	275.8	274.3	274.3	274.3	275.6	277.0	279.5
72.5°	267.4	264.2	262.0	259.8	258.4	257.0	256.8	256.7	257.6	258.3	260.0
75°	243.2	240.6	239.4	237.3	236.2	234.6	234.4	233.7	234.1	234.3	235.6
77.5°	213.8	211.4	210.4	208.3	207.4	205.6	205.5	204.6	205.0	204.8	205.7
80°	180.5	178.3	177.6	175.9	175.5	173.8	173.6	172.7	172.9	172.2	172.6
82.5°	143.1	141.1	140.7	139.0	139.0	137.6	137.5	136.0	136.0	134.8	132.8
85°	100.8	99.3	98.7	97.3	97.0	95.8	95.2	93.8	93.4	92.4	92.2
87.5°	53.2	52.3	51.5	50.8	49.7	47.5	47.3	45.9	46.0	45.0	45.0
90°	22.7	21.0	20.3	18.7	17.9	16.7	16.0	16.5	17.1	17.7	18.3
92.5°	23.8	22.9	21.9	21.0	20.1	19.1	18.2	19.1	20.1	21.0	21.9
95°	27.0	26.2	25.3	24.5	23.7	22.8	22.0	22.8	23.7	24.6	25.4
97.5°	30.1	29.5	29.1	28.5	28.0	27.6	27.0	27.6	28.0	28.5	29.1
100°	34.7	34.1	33.4	32.8	32.3	31.6	31.0	31.7	32.4	32.9	33.5
102.5°	60.7	56.9	53.1	49.3	45.4	41.6	37.8	41.6	45.4	49.4	53.2
105°	146.4	133.5	120.5	107.7	94.8	81.8	69.0	81.9	94.9	107.8	120.6
107.5°	295.8	273.3	250.5	227.9	205.1	182.4	159.7	182.5	205.2	227.9	250.6
110°	439.8	420.1	400.5	380.9	361.4	341.7	322.1	341.7	361.4	380.9	400.6



TEST NUMBER: P1444716
 CATALOG NUMBER: EHBR1-12-UNV-TA-L935-UPL18

CANDELA DISTRIBUTION (continued):

	165°	167.5°	170°	172.5°	175°	177.5°	180°	182.5°	185°	187.5°	190°
112.5°	517.3	505.5	493.4	481.5	469.6	457.7	445.7	457.7	469.7	481.7	493.6
115°	533.2	526.8	520.6	514.3	507.8	501.6	495.1	501.7	508.0	514.4	520.9
117.5°	513.0	510.7	508.5	506.3	503.9	501.7	499.3	501.7	504.1	506.5	508.9
120°	472.1	472.3	472.5	472.6	472.7	472.8	472.9	472.9	472.9	472.9	472.9
122.5°	427.5	429.1	430.5	432.0	433.5	435.0	436.4	435.1	433.8	432.6	431.1
125°	386.3	388.0	389.4	391.0	392.4	394.1	395.4	394.3	392.9	391.5	390.1
127.5°	351.1	352.6	353.8	355.4	356.5	357.9	359.1	358.1	356.9	355.8	354.6
130°	321.9	323.0	323.8	324.9	325.8	326.7	327.5	326.9	326.2	325.6	324.6
132.5°	300.5	301.3	302.0	302.6	303.3	303.9	304.4	304.1	303.7	303.3	302.8
135°	283.7	284.0	284.6	284.9	285.3	285.6	285.8	285.9	285.8	285.7	285.5
137.5°	269.6	269.8	269.9	270.0	270.0	270.0	270.0	270.3	270.4	270.8	270.9
140°	260.0	260.3	260.4	260.5	260.6	260.6	260.5	260.8	261.0	261.3	261.4
142.5°	250.4	250.6	250.8	250.9	250.9	250.9	250.9	251.1	251.3	251.6	251.7
145°	243.3	243.3	243.3	243.3	243.2	243.0	242.8	243.3	243.6	243.9	244.3
147.5°	236.2	236.2	236.2	236.1	236.0	235.9	235.7	236.1	236.5	236.7	237.1
150°	230.6	230.8	230.9	231.1	231.1	231.2	231.2	231.4	231.6	231.7	231.8
152.5°	225.2	225.4	225.5	225.6	225.8	225.8	225.8	226.0	226.2	226.4	226.5
155°	220.1	220.4	220.6	220.8	221.0	221.1	221.3	221.4	221.5	221.6	221.7
157.5°	215.8	216.1	216.3	216.4	216.6	216.8	217.0	217.2	217.2	217.4	217.4
160°	212.4	212.7	212.8	213.1	213.3	213.4	213.5	213.7	213.9	214.0	214.1
162.5°	210.2	210.4	210.4	210.7	210.8	211.0	211.2	211.4	211.5	211.6	211.7
165°	207.2	207.5	207.8	208.1	208.4	208.6	208.8	208.9	208.9	209.0	209.0
167.5°	206.8	207.1	207.4	207.6	207.8	208.1	208.3	208.4	208.4	208.4	208.5
170°	206.0	206.2	206.6	206.7	207.0	207.2	207.4	207.4	207.4	207.5	207.5
172.5°	205.4	205.7	206.0	206.3	206.6	206.9	207.2	207.2	207.0	206.8	206.6
175°	205.1	205.4	205.6	205.9	206.1	206.5	206.7	206.6	206.5	206.3	206.2
177.5°	206.8	207.2	207.5	207.8	208.1	208.5	208.8	208.5	208.2	208.0	207.7
180°	205.2	205.2	205.2	205.2	205.2	205.2	205.2	205.2	205.2	205.2	205.2



TEST NUMBER: P1444716
 CATALOG NUMBER: EHBR1-12-UNV-TA-L935-UPL18

CANDELA DISTRIBUTION (continued):

	192.5°	195°	197.5°	200°	202.5°	205°	207.5°	210°	212.5°	215°	217.5°
0°	9606.9	9606.9	9606.9	9606.9	9606.9	9606.9	9606.9	9606.9	9606.9	9606.9	9606.9
2.5°	9589.0	9593.8	9601.1	9607.8	9617.8	9625.7	9637.5	9646.5	9659.9	9668.6	9683.2
5°	9589.9	9608.6	9633.3	9657.4	9686.3	9712.6	9745.2	9773.0	9805.8	9832.6	9866.2
7.5°	9603.4	9639.6	9682.9	9726.6	9776.0	9822.3	9874.4	9921.5	9973.0	10016.7	10064.2
10°	9613.4	9669.2	9733.1	9797.4	9865.1	9928.0	9991.5	10046.3	10097.6	10139.8	10177.1
12.5°	9599.8	9676.7	9758.7	9837.9	9913.2	9978.2	10032.9	10075.0	10104.2	10124.0	10128.6
15°	9553.7	9646.2	9735.4	9814.3	9876.7	9924.8	9949.8	9961.5	9949.0	9928.1	9882.4
17.5°	9467.6	9565.1	9644.9	9707.1	9740.0	9753.2	9732.5	9696.5	9626.4	9548.4	9435.9
20°	9309.7	9400.6	9458.5	9492.3	9483.6	9450.8	9372.9	9278.1	9138.0	8988.5	8791.4
22.5°	9032.7	9112.2	9143.0	9145.5	9091.7	9009.9	8869.2	8706.7	8485.6	8255.7	7973.0
25°	8617.0	8686.6	8691.5	8664.1	8565.5	8433.0	8226.6	7996.5	7696.1	7389.8	7035.5
27.5°	8053.2	8119.9	8103.6	8052.6	7915.7	7738.4	7474.0	7176.9	6806.4	6444.6	6052.7
30°	7344.3	7415.8	7396.6	7331.1	7168.3	6958.8	6647.7	6302.5	5891.2	5504.8	5107.6
32.5°	6496.2	6586.4	6573.2	6511.0	6341.1	6116.9	5779.3	5413.2	4992.4	4611.6	4225.2
35°	5532.1	5641.6	5647.3	5606.6	5448.9	5227.3	4894.0	4539.7	4136.6	3777.3	3420.4
37.5°	4493.4	4620.5	4646.5	4635.5	4504.8	4309.2	4005.5	3687.6	3330.6	3015.6	2710.4
40°	3448.9	3577.6	3622.1	3635.4	3538.9	3387.4	3138.2	2881.6	2590.5	2335.3	2092.9
42.5°	2496.5	2610.4	2653.6	2680.6	2620.5	2519.4	2337.6	2151.3	1938.0	1754.0	1577.6
45°	1733.8	1814.5	1847.3	1874.6	1841.8	1784.7	1669.9	1553.4	1412.6	1292.3	1178.5
47.5°	1212.2	1256.7	1278.4	1291.6	1278.9	1249.1	1186.7	1119.1	1039.7	969.4	901.8
50°	898.5	922.2	933.5	941.1	931.9	915.4	881.6	844.8	801.2	761.4	722.4
52.5°	712.0	725.6	732.3	736.5	731.1	721.1	701.4	679.6	653.4	628.8	615.9
55°	599.9	599.2	614.7	607.2	614.7	597.9	594.5	570.4	548.7	533.5	516.9
57.5°	494.7	501.7	504.7	508.1	505.9	502.8	494.5	485.9	474.5	464.9	454.6
60°	428.2	434.0	437.3	440.6	440.4	439.2	434.4	429.2	422.2	416.4	410.2
62.5°	382.5	387.5	390.7	393.9	394.2	393.7	390.0	386.5	381.6	377.9	373.7
65°	346.4	349.9	352.1	354.6	354.6	353.8	350.6	347.6	343.6	341.1	337.9
67.5°	308.7	311.3	313.0	315.5	315.9	316.0	314.2	312.9	310.9	310.1	309.1
70°	281.9	285.1	287.9	290.9	292.6	293.3	292.6	291.8	290.7	290.2	289.4
72.5°	261.6	264.3	266.5	269.2	270.7	271.8	271.3	270.8	269.8	269.7	269.1
75°	236.4	238.3	239.5	241.5	242.4	243.3	242.9	243.2	242.9	243.6	243.6
77.5°	206.1	207.5	208.0	209.5	209.6	210.9	211.2	212.6	213.7	216.0	217.2
80°	171.9	172.8	172.8	174.4	175.1	177.2	178.2	180.5	181.6	183.7	183.9
82.5°	133.6	132.6	133.6	133.0	134.9	137.2	137.6	139.6	140.0	141.4	140.4
85°	91.4	91.3	90.5	90.5	90.0	90.3	89.9	90.3	89.9	90.0	89.0
87.5°	43.8	44.1	43.2	43.5	42.6	43.1	42.2	42.9	41.9	42.1	40.6
90°	18.9	19.6	20.1	20.8	21.7	23.4	25.2	26.9	28.9	30.6	32.5
92.5°	22.9	23.8	24.7	25.7	26.6	29.5	32.2	35.0	37.9	40.5	43.3
95°	26.3	27.1	27.9	28.8	29.6	33.6	37.7	41.7	45.8	49.8	53.8
97.5°	29.6	30.2	30.7	31.2	31.7	36.4	41.2	46.0	50.7	55.5	60.2
100°	34.2	34.8	35.3	36.1	36.7	47.7	58.6	69.5	80.5	91.4	102.3
102.5°	57.0	60.8	64.7	68.6	72.4	99.0	125.4	152.0	178.5	204.9	231.5
105°	133.6	146.5	159.4	172.4	185.3	225.4	265.6	305.7	345.8	385.9	426.1
107.5°	273.3	296.0	318.8	341.5	364.3	402.0	439.8	477.5	515.2	553.0	590.7
110°	420.3	439.8	459.5	479.2	498.8	528.7	558.8	588.8	618.7	648.8	678.7



TEST NUMBER: P1444716
 CATALOG NUMBER: EHBR1-12-UNV-TA-L935-UPL18

CANDELA DISTRIBUTION (continued):

	192.5°	195°	197.5°	200°	202.5°	205°	207.5°	210°	212.5°	215°	217.5°
112.5°	505.7	517.6	529.6	541.5	553.5	575.5	597.5	619.6	641.7	663.5	685.5
115°	527.2	533.6	540.0	546.2	552.7	566.1	579.4	592.7	606.1	619.3	632.7
117.5°	511.2	513.5	515.9	518.1	520.4	527.3	534.3	541.2	548.1	555.0	561.9
120°	472.9	472.8	472.7	472.6	472.5	474.6	477.0	479.3	481.4	483.7	485.9
122.5°	429.7	428.2	426.9	425.3	423.9	423.3	422.7	422.1	421.6	420.9	420.4
125°	388.7	387.3	385.7	384.3	382.7	381.0	379.3	377.5	375.8	374.0	372.2
127.5°	353.5	352.1	350.9	349.6	348.3	346.3	344.3	342.3	340.3	338.3	336.2
130°	324.0	323.1	322.3	321.2	320.4	318.6	316.9	315.2	313.5	311.9	310.1
132.5°	302.4	301.8	301.2	300.5	299.9	298.4	297.0	295.4	293.8	292.4	290.9
135°	285.2	284.9	284.7	284.4	284.0	283.0	281.9	280.8	279.8	278.6	277.5
137.5°	271.0	271.0	271.1	271.0	271.0	270.1	269.2	268.4	267.5	266.6	265.7
140°	261.5	261.5	261.7	261.6	261.6	260.6	259.7	258.7	257.8	256.8	255.8
142.5°	251.8	251.9	252.0	252.0	252.0	251.1	250.5	249.8	249.1	248.3	247.6
145°	244.3	244.6	244.8	244.9	245.1	244.2	243.3	242.4	241.5	240.5	239.7
147.5°	237.4	237.5	237.7	238.0	238.2	237.4	236.6	235.8	235.1	234.4	233.7
150°	231.9	231.9	232.1	232.1	232.1	231.3	230.5	229.7	228.9	228.0	227.3
152.5°	226.7	226.8	226.9	226.9	226.9	226.1	225.2	224.4	223.5	222.5	221.7
155°	221.8	221.8	221.8	221.8	221.8	221.0	220.1	219.3	218.5	217.6	216.8
157.5°	217.5	217.6	217.7	217.7	217.8	217.1	216.3	215.6	214.9	214.1	213.3
160°	214.2	214.3	214.3	214.4	214.4	213.8	213.3	212.6	212.1	211.4	210.7
162.5°	211.8	212.0	212.0	212.1	212.2	211.5	210.9	210.4	209.7	209.1	208.5
165°	208.9	208.9	208.9	208.8	208.8	208.4	208.1	207.6	207.3	206.7	206.4
167.5°	208.4	208.3	208.3	208.3	208.3	208.0	207.7	207.4	207.0	206.7	206.4
170°	207.4	207.3	207.3	207.3	207.2	206.9	206.6	206.4	206.1	205.7	205.4
172.5°	206.6	206.5	206.3	206.2	206.0	205.8	205.6	205.4	205.3	205.0	204.8
175°	205.9	205.8	205.6	205.5	205.3	205.3	205.2	205.1	205.0	204.8	204.7
177.5°	207.4	207.2	206.9	206.6	206.4	206.3	206.2	206.0	206.0	205.9	205.8
180°	205.2	205.2	205.2	205.2	205.2	205.2	205.2	205.2	205.2	205.2	205.2



TEST NUMBER: P1444716
 CATALOG NUMBER: EHBR1-12-UNV-TA-L935-UPL18

CANDELA DISTRIBUTION (continued):

	220°	222.5°	225°	227.5°	230°	232.5°	235°	237.5°	240°	242.5°	245°
0°	9606.9	9606.9	9606.9	9606.9	9606.9	9606.9	9606.9	9606.9	9606.9	9606.9	9606.9
2.5°	9692.2	9632.4	9624.5	9628.7	9638.6	9642.3	9653.1	9656.1	9667.0	9669.6	9680.0
5°	9892.2	9813.1	9817.0	9836.0	9864.8	9882.0	9910.3	9925.1	9952.1	9964.5	9988.8
7.5°	10103.1	10040.9	10060.3	10092.4	10131.8	10159.0	10193.0	10215.2	10244.5	10262.7	10286.2
10°	10206.6	10189.6	10210.9	10236.2	10258.6	10276.2	10290.6	10302.2	10309.8	10316.8	10319.9
12.5°	10127.9	10154.1	10157.8	10155.3	10140.5	10129.1	10103.6	10086.3	10055.4	10036.7	10000.1
15°	9835.8	9893.7	9861.6	9813.0	9742.0	9682.7	9599.0	9536.8	9449.6	9390.5	9303.0
17.5°	9323.1	9396.2	9312.6	9200.2	9057.3	8935.0	8782.7	8661.9	8510.4	8400.3	8259.0
20°	8601.4	8669.8	8520.7	8334.4	8113.3	7927.1	7707.7	7532.6	7328.7	7176.9	6993.9
22.5°	7702.9	7751.6	7541.5	7290.4	7008.6	6776.2	6513.8	6303.9	6071.0	5897.7	5702.4
25°	6708.8	6722.0	6470.0	6180.7	5866.7	5605.4	5325.2	5104.5	4867.2	4691.3	4499.8
27.5°	5705.4	5686.2	5413.9	5107.2	4776.8	4505.3	4232.0	4025.2	3817.3	3658.9	3493.9
30°	4758.5	4711.8	4429.0	4113.7	3793.2	3549.7	3322.9	3156.8	2991.4	2865.8	2733.3
32.5°	3890.1	3824.3	3549.0	3253.6	2983.5	2795.6	2627.4	2501.7	2368.1	2262.0	2150.9
35°	3120.9	3050.7	2806.9	2556.5	2352.0	2213.5	2081.3	1978.2	1864.9	1775.3	1678.8
37.5°	2460.7	2403.2	2199.0	2001.9	1847.3	1740.0	1631.7	1547.4	1453.7	1414.2	1311.1
40°	1899.7	1859.5	1699.8	1554.5	1438.3	1388.0	1278.0	1199.3	1129.3	1071.6	1015.5
42.5°	1481.8	1467.5	1312.1	1198.8	1117.1	1053.5	992.2	942.5	894.1	854.3	816.7
45°	1087.4	1076.2	1007.1	941.8	886.0	841.6	800.2	766.0	734.3	708.1	684.3
47.5°	846.8	843.2	803.4	762.9	727.8	699.2	672.3	649.7	628.6	611.1	605.4
50°	688.7	688.3	664.9	639.9	614.9	598.4	581.2	567.8	554.3	543.8	532.7
52.5°	585.1	582.6	566.9	551.4	536.6	525.8	514.8	506.2	497.3	490.8	483.9
55°	503.7	506.5	497.3	488.1	478.8	472.1	464.4	458.7	452.6	448.5	444.4
57.5°	447.2	450.7	446.0	440.7	435.1	430.7	425.3	421.4	417.4	414.7	412.4
60°	406.1	409.9	408.0	405.4	401.9	399.2	395.9	393.7	391.1	389.6	388.3
62.5°	371.2	376.0	375.3	374.1	371.9	370.4	368.5	367.6	365.8	365.2	364.5
65°	336.4	341.8	341.7	341.1	339.9	339.4	338.2	338.1	337.2	337.5	337.4
67.5°	309.0	313.7	314.8	315.5	315.5	315.8	315.7	316.1	316.1	316.8	317.2
70°	289.2	292.6	293.3	294.1	294.3	294.9	294.9	295.4	295.2	295.8	295.9
72.5°	269.3	273.6	274.3	275.0	275.0	275.6	275.3	275.2	274.3	274.2	273.5
75°	244.4	250.0	251.1	252.0	252.1	252.6	251.9	251.3	250.0	249.3	248.3
77.5°	218.4	224.2	225.0	225.3	224.9	225.0	223.4	222.3	220.5	219.8	218.8
80°	184.7	193.1	193.8	193.2	192.0	191.7	190.2	189.2	187.1	186.3	185.4
82.5°	140.6	150.5	151.8	152.4	151.4	151.6	150.2	149.5	147.6	147.2	145.9
85°	88.7	98.6	100.2	100.0	99.0	98.7	97.9	98.2	98.0	98.5	98.8
87.5°	40.8	50.3	52.7	51.9	51.8	51.1	49.6	50.2	51.1	51.7	51.8
90°	34.3	39.1	40.8	39.4	37.3	35.7	33.5	32.3	30.2	28.8	26.8
92.5°	46.1	48.9	51.7	49.2	46.7	44.2	41.8	39.2	36.8	34.3	31.8
95°	57.8	61.8	65.8	62.5	59.1	55.8	52.5	49.2	45.9	42.6	39.2
97.5°	64.9	69.6	74.3	71.1	67.7	64.3	61.0	57.7	54.4	51.1	47.8
100°	113.2	124.1	135.0	125.5	116.2	106.8	97.3	87.9	78.5	69.1	59.7
102.5°	257.9	284.3	310.8	287.0	263.3	239.5	215.7	192.0	168.2	144.4	120.6
105°	466.1	506.1	546.2	509.8	473.6	437.3	401.1	364.7	328.5	292.2	255.9
107.5°	628.4	665.9	703.5	670.7	638.0	605.2	572.3	539.6	506.8	474.0	441.3
110°	708.6	738.3	768.1	746.1	724.2	702.1	680.1	658.2	636.2	614.3	592.3



TEST NUMBER: P1444716
 CATALOG NUMBER: EHBR1-12-UNV-TA-L935-UPL18

CANDELA DISTRIBUTION (continued):

	220°	222.5°	225°	227.5°	230°	232.5°	235°	237.5°	240°	242.5°	245°
112.5°	707.6	729.1	751.0	738.1	725.3	712.6	699.7	686.9	674.1	661.3	648.6
115°	645.9	658.7	671.9	666.8	661.8	656.7	651.7	646.8	641.8	636.8	631.9
117.5°	568.7	575.1	581.8	580.9	580.1	579.1	578.3	577.6	576.8	576.0	575.2
120°	488.1	489.7	491.7	492.3	493.2	493.9	494.9	495.6	496.5	497.2	498.1
122.5°	419.7	418.5	417.5	418.3	419.1	419.7	420.5	421.3	422.1	422.8	423.7
125°	370.5	367.9	365.9	365.2	364.5	363.7	363.1	362.3	361.6	360.9	360.3
127.5°	334.3	331.4	329.2	327.4	325.5	323.6	321.7	319.8	318.0	316.1	314.3
130°	308.4	305.8	303.9	301.4	299.1	296.6	294.3	291.8	289.4	287.1	284.7
132.5°	289.4	286.9	285.2	282.9	280.7	278.3	276.0	273.7	271.4	269.0	266.8
135°	276.4	274.3	273.0	270.9	268.9	266.8	264.7	262.6	260.6	258.5	256.4
137.5°	264.9	262.9	261.8	260.2	258.6	256.9	255.3	253.7	252.1	250.2	248.7
140°	254.9	252.7	251.5	250.7	249.8	249.0	248.1	247.2	246.2	245.4	244.5
142.5°	246.9	245.0	244.0	243.5	243.0	242.4	242.0	241.4	240.8	240.3	239.7
145°	238.8	236.6	235.5	235.4	235.6	235.6	235.6	235.6	235.6	235.6	235.7
147.5°	232.9	230.7	229.6	229.8	230.0	230.1	230.4	230.5	230.8	230.8	231.1
150°	226.4	223.9	222.6	223.0	223.2	223.6	224.0	224.3	224.6	225.0	225.2
152.5°	220.8	217.8	216.3	216.7	217.1	217.4	217.8	218.2	218.5	219.0	219.3
155°	215.9	212.6	211.2	211.3	211.4	211.6	211.7	212.0	212.2	212.4	212.7
157.5°	212.5	209.3	207.9	207.8	207.9	207.9	208.0	208.2	208.3	208.4	208.5
160°	210.2	206.9	205.6	205.5	205.6	205.6	205.6	205.7	205.8	205.9	206.0
162.5°	207.8	204.6	203.3	203.3	203.3	203.3	203.4	203.4	203.5	203.6	203.7
165°	205.8	203.2	202.1	202.1	202.3	202.4	202.5	202.7	202.8	203.0	203.3
167.5°	206.1	203.7	202.8	202.7	202.6	202.5	202.5	202.4	202.4	202.3	202.3
170°	205.0	203.1	202.4	202.4	202.5	202.6	202.6	202.7	202.7	202.8	202.9
172.5°	204.6	203.1	202.7	202.7	203.0	203.2	203.4	203.6	203.7	203.9	204.2
175°	204.6	203.8	203.7	203.7	203.7	203.8	203.9	204.1	204.2	204.3	204.5
177.5°	205.6	205.4	205.2	205.2	205.2	205.2	205.2	205.2	205.2	205.3	205.3
180°	205.2	205.2	205.2	205.2	205.2	205.2	205.2	205.2	205.2	205.2	205.2



TEST NUMBER: P1444716
 CATALOG NUMBER: EHBR1-12-UNV-TA-L935-UPL18

CANDELA DISTRIBUTION (continued):

	247.5°	250°	252.5°	255°	257.5°	260°	262.5°	265°	267.5°	270°	272.5°
0°	9606.9	9606.9	9606.9	9606.9	9606.9	9606.9	9606.9	9606.9	9606.9	9606.9	9606.9
2.5°	9682.0	9693.3	9692.5	9703.0	9702.4	9712.4	9710.4	9719.0	9717.0	9724.4	9720.0
5°	9999.6	10021.1	10028.2	10047.6	10051.6	10068.9	10069.2	10083.0	10081.4	10092.2	10086.4
7.5°	10300.1	10320.1	10329.6	10344.7	10352.2	10364.6	10369.5	10379.7	10382.2	10388.3	10388.1
10°	10325.4	10325.4	10330.0	10327.9	10332.2	10329.7	10334.9	10333.0	10340.6	10338.6	10344.3
12.5°	9984.2	9950.4	9938.0	9907.6	9900.9	9874.8	9876.7	9860.0	9868.0	9857.8	9875.3
15°	9251.0	9172.5	9133.7	9065.4	9044.0	8990.0	8985.6	8949.7	8959.4	8940.7	8968.0
17.5°	8167.6	8043.9	7976.1	7876.3	7836.8	7760.4	7745.0	7698.9	7706.1	7682.9	7715.9
20°	6875.8	6726.3	6640.8	6525.4	6474.0	6382.9	6358.8	6307.1	6313.7	6290.6	6328.0
22.5°	5569.2	5412.8	5316.2	5195.3	5129.6	5044.0	5018.3	4966.5	4969.4	4947.7	4983.7
25°	4368.6	4218.6	4124.8	4015.0	3958.0	3879.5	3852.5	3805.9	3808.6	3790.7	3823.0
27.5°	3379.4	3256.3	3177.9	3085.9	3034.8	2970.2	2943.9	2904.8	2904.6	2891.6	2918.6
30°	2640.9	2538.2	2467.7	2387.5	2339.5	2281.3	2255.9	2220.9	2219.3	2210.0	2231.5
32.5°	2067.7	1976.3	1912.1	1841.6	1798.5	1748.5	1724.5	1696.3	1693.7	1685.3	1702.9
35°	1607.4	1530.4	1475.2	1415.8	1420.2	1346.5	1358.8	1301.5	1286.0	1282.5	1295.7
37.5°	1242.3	1182.8	1137.8	1093.4	1063.2	1032.1	1015.4	1000.3	998.6	997.1	1006.3
40°	972.4	930.7	898.1	867.5	846.8	827.8	817.3	809.1	807.1	806.0	811.5
42.5°	787.0	758.9	737.8	719.2	706.6	696.2	690.5	685.9	684.4	684.5	687.7
45°	664.9	647.8	634.2	622.7	614.7	618.2	607.8	613.2	606.1	613.5	608.6
47.5°	585.6	571.0	562.6	554.4	549.6	545.6	545.8	545.9	547.4	547.6	549.2
50°	524.3	515.9	510.1	504.8	502.3	500.2	500.9	501.5	503.0	503.1	504.3
52.5°	479.0	473.5	469.9	466.7	465.6	464.4	464.9	464.7	465.3	465.0	465.9
55°	442.1	439.5	438.4	437.2	437.4	437.0	437.2	436.1	435.4	434.5	435.3
57.5°	411.8	411.5	412.2	412.7	414.1	414.6	414.9	413.6	412.3	411.1	411.8
60°	388.5	389.1	390.9	392.4	394.4	395.3	395.9	395.2	394.3	393.3	393.8
62.5°	365.5	366.4	368.6	370.3	372.7	374.0	375.3	375.4	375.8	375.4	375.8
65°	338.8	339.9	341.9	343.3	345.6	346.7	348.0	348.3	349.1	348.9	349.6
67.5°	318.5	319.5	321.2	322.5	324.5	325.6	326.9	326.9	327.3	327.2	327.8
70°	296.9	297.4	298.9	300.0	302.0	303.2	304.5	305.0	305.9	306.0	306.7
72.5°	273.8	273.6	274.4	275.0	276.4	277.4	279.2	280.2	281.7	282.0	282.6
75°	248.7	248.4	249.5	250.0	251.2	252.1	254.2	255.5	257.9	258.8	258.5
77.5°	219.6	220.1	222.1	223.1	224.9	226.0	228.7	230.8	235.0	236.9	235.0
80°	187.1	187.5	189.6	190.7	192.9	194.3	197.3	199.8	203.6	204.4	203.3
82.5°	147.0	147.2	149.0	149.8	152.7	154.8	158.6	160.5	162.9	162.5	162.2
85°	100.2	101.6	104.0	106.2	109.8	113.2	116.7	119.6	117.6	120.8	117.2
87.5°	53.6	53.5	56.6	56.1	61.1	64.0	67.0	68.4	70.1	69.8	69.8
90°	25.6	24.4	23.9	22.5	22.3	20.8	20.8	19.5	19.7	18.1	20.3
92.5°	29.4	28.0	26.6	25.4	24.0	22.7	21.3	20.0	18.7	17.3	18.7
95°	36.0	34.7	33.5	32.3	31.0	29.8	28.5	27.3	26.1	24.8	26.4
97.5°	44.5	43.8	43.1	42.3	41.6	41.0	40.2	39.5	38.8	38.1	39.1
100°	50.3	50.3	50.3	50.3	50.2	50.2	50.2	50.2	50.2	50.2	51.0
102.5°	96.9	94.5	92.2	89.7	87.4	84.9	82.6	80.2	77.9	75.5	79.0
105°	219.7	210.4	201.1	191.9	182.4	173.2	163.9	154.6	145.3	136.0	145.6
107.5°	408.6	391.5	374.6	357.7	340.7	323.7	306.8	289.9	273.0	256.0	271.2
110°	570.4	552.4	534.5	516.5	498.5	480.4	462.5	444.6	426.6	408.7	423.1



TEST NUMBER: P1444716
 CATALOG NUMBER: EHBR1-12-UNV-TA-L935-UPL18

CANDELA DISTRIBUTION (continued):

	247.5°	250°	252.5°	255°	257.5°	260°	262.5°	265°	267.5°	270°	272.5°
112.5°	635.8	624.1	612.6	600.9	589.4	577.8	566.3	554.7	543.2	531.6	538.5
115°	626.8	621.4	615.8	610.3	604.8	599.3	593.7	588.3	582.8	577.3	577.8
117.5°	574.4	572.6	570.7	568.9	567.2	565.3	563.6	561.8	559.9	558.3	554.4
120°	499.0	499.6	500.1	500.8	501.5	502.1	502.7	503.4	504.1	504.8	499.6
122.5°	424.4	425.8	427.2	428.7	430.1	431.7	433.1	434.7	436.2	437.8	432.5
125°	359.5	360.9	362.3	363.7	365.1	366.5	368.1	369.6	371.1	372.7	368.2
127.5°	312.5	313.0	313.5	314.0	314.6	315.2	315.9	316.5	317.2	318.0	315.2
130°	282.3	281.9	281.5	281.1	280.6	280.4	280.1	279.8	279.6	279.4	278.2
132.5°	264.5	263.4	262.4	261.3	260.3	259.3	258.4	257.6	256.7	255.9	255.5
135°	254.3	252.8	251.3	249.9	248.3	247.2	245.7	244.4	243.3	242.0	242.2
137.5°	247.0	245.5	244.1	242.6	241.1	239.8	238.5	237.1	235.9	234.7	235.1
140°	243.6	242.1	240.6	239.2	237.8	236.5	235.1	233.8	232.6	231.5	231.7
142.5°	239.2	237.8	236.5	235.2	233.9	232.7	231.5	230.3	229.2	228.1	228.4
145°	235.7	234.7	233.7	232.7	231.8	230.9	229.9	229.2	228.4	227.7	227.8
147.5°	231.2	230.5	229.7	228.9	228.2	227.7	226.9	226.3	225.7	225.1	225.2
150°	225.6	225.1	224.6	224.1	223.7	223.2	222.9	222.4	222.1	221.7	221.6
152.5°	219.7	219.2	218.8	218.3	218.0	217.5	217.2	216.8	216.5	216.1	216.1
155°	212.9	212.7	212.4	212.3	212.1	211.9	211.7	211.7	211.4	211.4	211.4
157.5°	208.6	208.5	208.5	208.5	208.5	208.4	208.3	208.4	208.3	208.4	208.5
160°	206.2	206.1	205.9	205.8	205.6	205.6	205.5	205.4	205.3	205.2	205.4
162.5°	203.7	203.9	203.9	204.0	204.1	204.2	204.3	204.4	204.5	204.6	204.7
165°	203.5	203.4	203.4	203.2	203.2	203.2	203.2	203.1	203.1	203.2	203.4
167.5°	202.3	202.4	202.5	202.6	202.7	202.9	203.1	203.3	203.4	203.7	203.8
170°	202.9	202.9	202.9	202.9	202.9	203.0	203.0	203.0	203.1	203.2	203.3
172.5°	204.4	204.4	204.3	204.4	204.3	204.4	204.4	204.4	204.4	204.5	204.6
175°	204.5	204.6	204.7	204.9	205.0	205.1	205.2	205.4	205.5	205.6	205.6
177.5°	205.3	205.3	205.3	205.3	205.3	205.4	205.4	205.4	205.4	205.3	205.4
180°	205.2	205.2	205.2	205.2	205.2	205.2	205.2	205.2	205.2	205.2	205.2



TEST NUMBER: P1444716
 CATALOG NUMBER: EHBR1-12-UNV-TA-L935-UPL18

CANDELA DISTRIBUTION (continued):

	275°	277.5°	280°	282.5°	285°	287.5°	290°	292.5°	295°	297.5°	300°
0°	9606.9	9606.9	9606.9	9606.9	9606.9	9606.9	9606.9	9606.9	9606.9	9606.9	9606.9
2.5°	9727.2	9722.3	9727.3	9722.3	9727.3	9721.3	9725.4	9718.8	9720.5	9713.7	9715.4
5°	10095.0	10087.3	10091.3	10081.3	10082.4	10068.9	10068.7	10053.0	10048.8	10031.0	10023.2
7.5°	10392.4	10389.9	10391.3	10384.8	10384.1	10374.8	10370.5	10357.5	10349.4	10333.0	10321.7
10°	10345.3	10352.9	10354.9	10362.6	10364.2	10371.8	10373.5	10381.1	10382.7	10388.3	10388.4
12.5°	9874.5	9900.2	9906.4	9938.2	9951.6	9987.9	10007.4	10047.6	10071.3	10111.4	10135.9
15°	8967.3	9011.9	9029.7	9091.7	9126.1	9198.6	9244.1	9327.4	9386.1	9474.5	9537.6
17.5°	7718.8	7781.1	7809.2	7893.4	7948.3	8055.4	8132.4	8259.4	8356.5	8497.6	8609.4
20°	6334.4	6403.6	6441.7	6537.7	6602.6	6727.6	6823.8	6979.8	7109.9	7288.7	7441.5
22.5°	4995.1	5060.9	5103.2	5200.9	5273.9	5404.3	5511.9	5676.5	5822.3	6023.6	6206.9
25°	3835.2	3895.6	3933.8	4022.2	4090.8	4210.6	4313.3	4471.6	4614.3	4816.3	5004.2
27.5°	2932.0	2982.5	3019.4	3094.8	3155.2	3256.8	3345.1	3476.0	3598.9	3773.6	3941.0
30°	2244.7	2289.5	2325.4	2391.0	2447.1	2535.2	2612.8	2722.7	2824.4	2963.4	3096.6
32.5°	1715.3	1753.8	1785.8	1843.3	1894.1	1973.4	2043.4	2139.8	2227.0	2344.9	2454.5
35°	1307.8	1383.7	1378.3	1457.6	1470.3	1527.3	1589.7	1673.9	1751.2	1851.5	1944.7
37.5°	1015.1	1036.5	1059.3	1094.3	1131.2	1182.9	1235.7	1338.6	1376.4	1452.1	1529.2
40°	818.6	833.0	848.1	871.8	897.5	934.1	972.4	1021.5	1071.8	1133.3	1196.1
42.5°	692.1	700.2	709.8	723.7	739.7	762.8	788.4	821.7	856.8	900.0	944.1
45°	618.3	614.4	617.3	624.7	634.3	648.4	664.6	685.2	708.0	736.0	765.8
47.5°	549.6	551.1	552.0	556.0	561.2	570.6	580.4	594.5	621.5	629.6	645.9
50°	504.2	504.9	504.6	506.7	509.4	515.4	521.8	531.3	540.7	553.3	565.3
52.5°	466.1	467.1	467.0	468.4	469.8	473.6	477.6	484.3	490.6	498.6	505.4
55°	436.0	437.5	438.1	439.2	439.9	441.9	443.6	446.7	449.4	453.9	458.1
57.5°	412.9	414.9	415.8	416.3	415.5	415.4	414.8	415.5	416.0	418.5	420.8
60°	394.7	396.3	396.6	396.3	394.9	393.8	392.1	391.5	391.3	392.4	393.7
62.5°	375.7	376.3	375.9	375.4	373.7	372.7	370.9	370.2	369.6	370.5	371.1
65°	349.4	349.8	349.4	349.0	347.6	346.7	345.2	344.7	343.9	344.0	344.0
67.5°	327.9	328.5	328.1	327.6	326.6	326.1	325.0	324.3	323.3	322.8	322.1
70°	306.6	307.0	306.4	306.0	304.8	304.3	303.3	303.1	302.3	302.1	301.3
72.5°	282.0	282.1	281.2	281.1	280.1	280.1	279.7	280.1	280.1	280.4	280.2
75°	257.0	256.7	255.6	255.4	254.7	255.0	254.6	255.2	255.2	256.1	256.3
77.5°	231.8	230.6	228.5	227.6	226.2	226.0	225.2	225.8	225.6	226.7	227.1
80°	200.1	198.5	195.9	194.7	193.0	192.8	192.1	192.8	192.4	193.7	194.6
82.5°	159.8	158.3	155.7	154.7	152.8	153.0	152.2	153.0	152.9	154.7	155.8
85°	118.2	117.3	114.5	112.0	109.3	107.7	106.1	105.9	105.3	106.1	106.8
87.5°	68.2	67.4	65.3	63.8	59.0	59.2	57.3	57.2	56.7	56.3	57.3
90°	20.7	22.6	23.1	24.9	25.6	27.6	28.3	30.2	30.9	33.1	33.9
92.5°	20.0	21.3	22.7	24.0	25.4	26.6	28.0	29.4	32.3	35.1	38.1
95°	27.9	29.5	31.0	32.6	34.2	35.7	37.3	38.8	43.1	47.2	51.5
97.5°	40.2	41.1	42.1	43.2	44.2	45.2	46.3	47.3	51.8	56.4	60.9
100°	51.8	52.7	53.5	54.4	55.2	56.0	56.8	57.6	66.5	75.3	84.0
102.5°	82.5	86.0	89.5	93.0	96.6	100.1	103.6	107.1	127.2	147.4	167.5
105°	155.3	164.9	174.6	184.1	193.7	203.3	212.9	222.5	254.7	286.9	319.2
107.5°	286.4	301.5	316.8	332.0	347.2	362.4	377.6	392.8	424.2	455.6	487.0
110°	437.6	452.0	466.5	481.0	495.5	509.9	524.4	538.9	557.8	576.5	595.5



TEST NUMBER: P1444716
 CATALOG NUMBER: EHBR1-12-UNV-TA-L935-UPL18

CANDELA DISTRIBUTION (continued):

	275°	277.5°	280°	282.5°	285°	287.5°	290°	292.5°	295°	297.5°	300°
112.5°	545.6	552.6	559.7	566.7	573.8	580.9	587.9	595.0	604.3	613.8	623.1
115°	578.2	578.7	579.1	579.6	580.0	580.5	581.0	581.5	584.5	587.4	590.3
117.5°	550.4	546.6	542.7	538.8	535.0	531.2	527.3	523.6	522.9	522.2	521.6
120°	494.5	489.2	484.1	478.8	473.7	468.6	463.5	458.4	455.7	453.0	450.4
122.5°	427.3	422.1	417.0	411.7	406.6	401.5	396.5	391.4	389.5	387.5	385.7
125°	363.8	359.5	355.2	350.9	346.8	342.5	338.3	334.2	333.9	333.5	333.4
127.5°	312.6	309.9	307.2	304.7	302.1	299.5	297.1	294.6	295.6	296.5	297.4
130°	276.9	275.7	274.6	273.3	272.4	271.4	270.3	269.2	271.0	272.7	274.6
132.5°	255.3	255.0	254.9	254.6	254.5	254.4	254.3	254.2	256.3	258.4	260.5
135°	242.4	242.6	243.0	243.3	243.8	244.1	244.5	244.9	247.0	248.9	251.0
137.5°	235.6	236.0	236.6	237.1	237.7	238.3	239.0	239.5	241.2	242.6	244.3
140°	232.0	232.4	232.8	233.2	233.7	234.2	234.7	235.1	236.4	237.6	238.8
142.5°	228.8	229.0	229.5	229.9	230.4	230.8	231.3	231.7	232.7	233.5	234.4
145°	228.0	228.2	228.5	228.8	229.1	229.5	229.8	230.1	230.7	231.1	231.7
147.5°	225.3	225.4	225.6	225.8	226.0	226.2	226.4	226.6	226.9	227.1	227.6
150°	221.7	221.7	221.8	221.7	221.8	221.9	222.1	222.1	222.3	222.6	222.9
152.5°	216.2	216.2	216.2	216.1	216.2	216.3	216.3	216.3	216.6	216.9	217.2
155°	211.5	211.6	211.8	211.9	212.1	212.2	212.4	212.4	212.6	212.7	212.9
157.5°	208.5	208.6	208.8	208.9	209.1	209.2	209.3	209.5	209.6	209.7	209.8
160°	205.6	205.8	206.0	206.4	206.6	206.7	207.0	207.2	207.4	207.5	207.6
162.5°	204.9	205.0	205.2	205.3	205.4	205.6	205.6	205.8	206.1	206.3	206.5
165°	203.6	203.9	204.2	204.3	204.6	204.9	205.1	205.4	205.5	205.6	205.7
167.5°	204.0	204.2	204.5	204.7	205.0	205.2	205.5	205.6	205.7	205.8	206.0
170°	203.6	203.7	203.9	204.2	204.4	204.6	204.8	204.9	205.2	205.4	205.6
172.5°	204.7	204.8	205.0	205.2	205.4	205.6	205.7	205.9	206.1	206.3	206.4
175°	205.6	205.6	205.6	205.6	205.6	205.6	205.6	205.7	205.8	205.8	205.8
177.5°	205.5	205.6	205.7	205.8	205.9	206.1	206.2	206.3	206.3	206.3	206.3
180°	205.2	205.2	205.2	205.2	205.2	205.2	205.2	205.2	205.2	205.2	205.2



TEST NUMBER: P1444716
 CATALOG NUMBER: EHBR1-12-UNV-TA-L935-UPL18

CANDELA DISTRIBUTION (continued):

	302.5°	305°	307.5°	310°	312.5°	315°	317.5°	320°	322.5°	325°	327.5°
0°	9606.9	9606.9	9606.9	9606.9	9606.9	9606.9	9606.9	9606.9	9606.9	9606.9	9606.9
2.5°	9708.6	9709.1	9701.3	9700.8	9693.5	9692.6	9685.4	9683.2	9677.4	9675.3	9669.4
5°	10003.2	9993.6	9971.6	9958.7	9936.8	9922.4	9898.8	9883.4	9860.7	9843.5	9820.6
7.5°	10301.1	10286.3	10261.5	10241.4	10211.2	10187.1	10151.8	10122.8	10084.5	10051.3	10011.0
10°	10388.4	10386.2	10379.8	10370.7	10356.6	10340.9	10316.7	10291.6	10258.1	10221.6	10176.9
12.5°	10173.5	10196.7	10228.4	10247.1	10269.9	10279.9	10289.3	10286.9	10280.8	10262.4	10236.5
15°	9628.9	9694.1	9780.5	9847.4	9924.5	9980.4	10042.2	10080.7	10119.2	10136.9	10147.8
17.5°	8762.6	8886.1	9041.0	9169.3	9317.4	9436.4	9566.8	9664.9	9765.9	9838.2	9903.5
20°	7649.9	7828.8	8047.8	8241.3	8466.4	8661.9	8876.2	9052.1	9233.5	9375.3	9509.7
22.5°	6442.9	6655.4	6920.3	7165.5	7455.6	7716.3	8010.5	8266.4	8533.7	8757.0	8972.9
25°	5256.1	5489.1	5778.7	6052.4	6380.9	6684.2	7033.0	7352.1	7697.5	7997.4	8293.7
27.5°	4172.3	4401.1	4696.8	4988.1	5335.5	5658.6	6032.3	6383.9	6777.3	7140.0	7511.0
30°	3281.5	3475.6	3740.7	4022.9	4365.5	4694.3	5072.2	5433.6	5842.8	6238.9	6656.9
32.5°	2599.9	2747.7	2956.2	3194.7	3510.8	3823.9	4183.6	4532.6	4935.6	5335.7	5770.4
35°	2064.8	2180.1	2339.0	2525.2	2792.9	3062.8	3381.0	3698.3	4074.2	4453.9	4876.4
37.5°	1628.2	1721.8	1846.2	1986.1	2200.8	2422.3	2683.2	2946.3	3272.9	3609.5	3992.4
40°	1271.4	1347.2	1444.1	1548.4	1710.5	1881.2	2082.9	2286.9	2549.4	2824.5	3141.3
42.5°	998.8	1054.7	1123.1	1199.3	1350.6	1441.2	1578.1	1725.7	1918.6	2118.3	2356.5
45°	802.1	840.3	887.7	938.9	1009.1	1085.9	1179.6	1277.9	1461.2	1551.1	1696.0
47.5°	669.9	695.4	725.7	757.9	799.3	844.0	899.5	956.4	1029.9	1106.0	1195.3
50°	580.8	606.8	617.2	633.9	657.8	683.4	714.7	746.0	785.4	825.4	871.3
52.5°	514.7	523.1	534.5	545.1	559.8	588.9	598.4	614.7	636.8	658.4	682.6
55°	464.1	469.7	477.0	483.4	492.4	501.0	513.3	524.3	539.0	552.0	568.1
57.5°	424.9	428.4	433.5	437.7	443.5	448.4	455.6	461.5	470.0	477.4	487.1
60°	396.3	398.7	402.0	404.9	408.5	411.0	414.6	417.5	421.9	425.6	431.1
62.5°	373.0	374.2	376.5	378.0	380.4	381.7	383.6	384.8	387.3	389.2	392.2
65°	345.0	345.3	346.8	347.5	349.3	350.0	351.6	352.1	354.2	355.6	358.2
67.5°	322.1	321.5	321.5	320.9	321.2	320.7	320.8	320.2	321.0	321.5	323.5
70°	301.2	300.3	300.0	299.0	298.7	297.7	297.5	296.6	296.5	296.2	296.9
72.5°	280.8	280.5	280.6	279.9	279.8	279.1	279.1	278.8	279.2	279.4	280.3
75°	257.3	257.3	257.9	257.2	257.4	256.9	257.0	256.5	256.8	256.7	257.6
77.5°	228.8	229.4	230.7	230.4	230.8	230.1	230.4	229.7	229.9	229.4	229.8
80°	196.6	198.0	199.7	199.7	200.4	199.8	200.5	199.8	200.1	199.2	199.0
82.5°	158.5	159.7	161.5	161.5	163.1	163.4	165.1	165.0	166.1	165.5	165.0
85°	108.3	109.1	110.8	111.6	113.2	114.2	115.8	116.6	115.3	117.6	115.8
87.5°	56.6	58.6	57.5	60.3	59.6	62.4	61.8	64.3	63.8	66.1	65.8
90°	36.4	37.5	40.1	41.1	44.1	45.6	45.7	44.0	44.1	42.5	42.5
92.5°	40.9	43.8	46.7	49.6	52.5	55.4	52.7	50.0	47.3	44.7	42.0
95°	55.7	59.9	64.2	68.4	72.6	76.9	72.3	67.8	63.3	58.7	54.1
97.5°	65.4	70.1	74.6	79.1	83.7	88.2	82.8	77.5	72.1	66.8	61.4
100°	92.8	101.6	110.4	119.1	128.0	136.8	126.8	116.7	106.9	96.8	86.8
102.5°	187.7	207.9	228.0	248.2	268.4	288.5	267.2	246.1	224.8	203.5	182.3
105°	351.4	383.7	415.9	448.2	480.4	512.7	478.4	443.8	409.4	375.0	340.5
107.5°	518.4	549.9	581.4	612.8	644.2	675.7	640.8	605.8	570.9	536.0	501.0
110°	614.3	633.2	652.0	671.0	689.8	708.7	683.3	657.7	632.3	606.6	581.1



TEST NUMBER: P1444716
 CATALOG NUMBER: EHBR1-12-UNV-TA-L935-UPL18

CANDELA DISTRIBUTION (continued):

	302.5°	305°	307.5°	310°	312.5°	315°	317.5°	320°	322.5°	325°	327.5°
112.5°	632.5	642.0	651.4	660.8	670.2	679.7	661.3	643.2	624.8	606.6	588.4
115°	593.3	596.2	599.2	602.1	605.1	608.1	595.6	583.3	571.0	558.7	546.2
117.5°	521.0	520.3	519.7	519.1	518.4	517.9	510.9	504.0	496.9	490.1	483.0
120°	447.7	445.1	442.5	439.8	437.1	434.5	431.5	428.4	425.4	422.4	419.3
122.5°	383.7	382.0	380.1	378.2	376.2	374.3	373.0	371.9	370.6	369.3	368.2
125°	333.3	333.0	332.7	332.5	332.3	332.0	331.4	330.6	329.9	329.2	328.5
127.5°	298.3	299.3	300.2	301.1	302.0	302.9	302.5	302.4	302.1	301.8	301.5
130°	276.3	278.1	279.8	281.6	283.2	285.0	284.6	284.1	283.6	283.1	282.7
132.5°	262.6	264.6	266.6	268.7	270.8	272.8	272.3	271.7	271.1	270.6	270.0
135°	252.9	254.9	256.8	258.8	260.7	262.6	261.9	261.3	260.5	259.9	259.3
137.5°	245.8	247.3	248.8	250.3	251.8	253.3	252.6	252.0	251.2	250.6	250.0
140°	240.0	241.3	242.4	243.6	244.8	246.0	245.2	244.3	243.5	242.7	241.9
142.5°	235.2	236.1	236.9	237.7	238.5	239.5	238.4	237.4	236.3	235.3	234.3
145°	232.3	232.7	233.3	233.8	234.3	234.8	233.6	232.5	231.2	230.0	228.9
147.5°	227.9	228.1	228.3	228.7	228.8	229.2	228.0	226.9	225.9	224.7	223.6
150°	223.0	223.5	223.7	223.9	224.1	224.3	223.1	222.1	220.9	219.7	218.7
152.5°	217.3	217.7	217.9	218.1	218.2	218.4	217.3	216.3	215.3	214.2	213.1
155°	213.0	213.2	213.3	213.3	213.4	213.5	212.6	211.8	210.9	210.0	209.1
157.5°	209.9	210.1	210.2	210.3	210.4	210.4	209.7	209.1	208.4	207.7	207.0
160°	207.7	207.8	207.9	208.0	208.1	208.2	207.5	207.0	206.5	205.8	205.3
162.5°	206.6	207.0	207.2	207.3	207.5	207.6	207.0	206.4	205.6	204.9	204.3
165°	205.8	205.9	206.0	206.1	206.2	206.3	205.7	205.3	204.8	204.4	203.8
167.5°	206.1	206.2	206.3	206.4	206.4	206.5	206.0	205.6	205.1	204.6	204.1
170°	205.7	206.0	206.2	206.3	206.5	206.6	206.2	205.8	205.4	205.1	204.6
172.5°	206.6	206.8	206.9	207.1	207.2	207.4	206.9	206.6	206.1	205.7	205.3
175°	205.8	205.9	206.0	206.0	206.0	206.0	205.7	205.4	205.1	204.7	204.5
177.5°	206.3	206.3	206.3	206.3	206.3	206.3	206.1	205.8	205.6	205.5	205.1
180°	205.2	205.2	205.2	205.2	205.2	205.2	205.2	205.2	205.2	205.2	205.2



TEST NUMBER: P1444716
 CATALOG NUMBER: EHBR1-12-UNV-TA-L935-UPL18

CANDELA DISTRIBUTION (continued):

	330°	332.5°	335°	337.5°	340°	342.5°	345°	347.5°	350°	352.5°	355°
0°	9606.9	9606.9	9606.9	9606.9	9606.9	9606.9	9606.9	9606.9	9606.9	9606.9	9606.9
2.5°	9667.3	9663.1	9660.4	9656.9	9654.9	9652.1	9650.2	9648.5	9647.1	9645.9	9645.0
5°	9803.2	9781.6	9764.9	9746.7	9731.8	9716.8	9705.4	9695.9	9689.4	9684.4	9681.5
7.5°	9976.3	9936.7	9901.6	9864.5	9831.3	9798.7	9770.6	9746.3	9728.1	9716.3	9709.2
10°	10130.9	10077.9	10025.5	9970.4	9918.1	9867.5	9820.6	9779.5	9746.9	9725.3	9712.7
12.5°	10200.1	10155.1	10101.6	10041.7	9977.7	9912.9	9849.7	9792.7	9744.9	9712.9	9694.3
15°	10139.1	10120.6	10084.3	10037.9	9977.1	9910.1	9835.9	9766.1	9702.1	9660.5	9636.4
17.5°	9940.6	9966.4	9963.7	9946.0	9902.2	9845.8	9770.2	9691.9	9611.7	9556.2	9525.8
20°	9605.6	9686.9	9728.1	9749.3	9732.1	9695.5	9627.1	9547.6	9454.2	9381.6	9337.3
22.5°	9134.9	9278.4	9367.8	9433.2	9447.0	9434.6	9374.2	9298.6	9194.3	9107.2	9041.7
25°	8528.9	8739.1	8880.4	8991.1	9034.2	9045.3	8993.9	8918.7	8802.5	8700.9	8611.0
27.5°	7815.2	8088.3	8276.9	8425.7	8492.9	8522.0	8474.7	8398.0	8260.6	8139.3	8021.9
30°	7011.6	7335.6	7562.8	7741.2	7823.1	7861.6	7811.3	7725.7	7565.8	7419.8	7271.9
32.5°	6151.5	6506.1	6753.6	6947.4	7028.5	7064.7	6998.9	6902.9	6718.0	6546.1	6373.6
35°	5251.1	5608.9	5858.5	6047.2	6115.2	6137.0	6052.9	5941.8	5737.0	5548.3	5360.2
37.5°	4332.3	4665.2	4892.1	5061.3	5103.4	5107.2	5005.8	4883.1	4667.9	4481.8	4294.6
40°	3421.4	3702.2	3885.3	4020.8	4035.4	4022.4	3912.3	3788.7	3587.3	3420.7	3256.3
42.5°	2563.4	2775.4	2906.1	2998.9	2993.3	2967.6	2866.6	2760.4	2594.3	2467.3	2338.1
45°	1828.3	1968.1	2044.5	2098.9	2081.4	2056.8	1978.2	1903.8	1790.9	1708.9	1622.1
47.5°	1270.2	1437.1	1408.0	1514.3	1422.8	1483.2	1357.3	1287.9	1228.0	1184.4	1135.3
50°	909.3	947.6	966.1	978.7	971.9	962.7	940.0	919.8	892.5	872.5	849.2
52.5°	702.2	721.3	731.9	739.5	737.9	734.6	724.7	715.7	702.9	694.4	684.3
55°	594.8	595.1	614.4	606.2	618.3	604.1	609.7	593.8	596.4	582.8	573.6
57.5°	494.3	502.1	505.6	509.1	508.1	507.5	503.7	501.7	497.5	496.1	493.0
60°	434.8	438.9	439.8	441.3	440.0	439.5	436.5	435.4	432.6	432.0	430.0
62.5°	394.0	396.1	396.1	396.1	394.4	392.7	389.4	387.7	385.3	384.7	383.6
65°	360.0	362.2	362.5	363.0	361.7	360.4	357.5	355.6	353.1	352.1	350.7
67.5°	324.8	327.1	327.9	329.1	328.4	328.1	326.1	325.4	323.7	323.3	322.1
70°	297.2	298.2	298.1	298.1	296.6	295.1	292.8	291.7	289.9	289.6	288.5
72.5°	280.8	281.5	281.1	280.4	278.4	276.3	273.6	271.6	269.4	268.0	266.4
75°	257.7	258.6	258.0	257.7	255.9	254.5	252.3	251.2	249.6	249.1	248.1
77.5°	229.3	229.8	228.8	228.8	227.3	226.5	224.9	224.6	223.4	223.4	222.3
80°	197.8	197.5	196.0	195.7	194.3	194.0	192.7	192.8	191.9	192.2	191.5
82.5°	162.7	161.8	159.9	159.3	157.7	157.5	156.7	157.4	156.8	157.7	157.2
85°	116.6	116.8	116.0	116.0	115.6	115.6	115.6	116.1	116.2	117.0	116.9
87.5°	65.0	66.0	65.8	66.6	66.6	67.5	67.9	69.2	69.4	70.8	70.8
90°	40.9	41.1	39.5	39.8	39.0	39.9	39.4	40.3	39.5	40.2	39.2
92.5°	39.3	36.6	34.0	31.3	29.9	28.5	27.4	25.8	24.6	23.1	21.8
95°	49.6	45.0	40.5	36.0	34.4	32.9	31.4	29.8	28.2	26.6	25.1
97.5°	56.1	50.7	45.3	40.0	38.6	37.3	35.9	34.5	33.2	31.8	30.5
100°	76.8	66.8	56.7	46.8	45.6	44.5	43.3	42.2	41.1	39.9	38.7
102.5°	161.1	139.8	118.5	97.2	93.3	89.2	85.2	81.1	77.0	73.1	69.1
105°	306.2	271.7	237.2	202.7	191.8	180.8	169.9	159.0	148.0	137.0	126.2
107.5°	466.0	431.1	396.2	361.2	341.0	320.7	300.4	280.2	260.0	239.8	219.5
110°	555.6	530.0	504.5	478.9	462.7	446.4	430.1	413.7	397.5	381.2	364.9



TEST NUMBER: P1444716
 CATALOG NUMBER: EHBR1-12-UNV-TA-L935-UPL18

CANDELA DISTRIBUTION (continued):

	330°	332.5°	335°	337.5°	340°	342.5°	345°	347.5°	350°	352.5°	355°
112.5°	570.1	551.7	533.5	515.1	507.7	500.3	493.0	485.5	478.1	470.7	463.2
115°	533.8	521.5	509.1	496.6	493.9	491.4	488.8	486.1	483.4	480.7	478.0
117.5°	476.1	469.0	462.0	455.1	455.3	455.8	456.2	456.6	456.9	457.2	457.5
120°	416.3	413.3	410.1	407.1	409.3	411.5	413.6	415.7	417.9	420.0	422.0
122.5°	366.9	365.6	364.3	363.0	365.6	368.3	370.9	373.4	376.0	378.5	380.9
125°	327.8	327.0	326.3	325.6	328.2	330.9	333.5	336.0	338.7	341.1	343.6
127.5°	301.3	300.9	300.7	300.4	302.3	304.0	305.9	307.6	309.3	311.0	312.8
130°	282.2	281.7	281.2	280.8	282.4	284.0	285.7	287.2	288.8	290.3	291.7
132.5°	269.5	268.8	268.3	267.7	268.8	270.0	271.2	272.1	273.3	274.2	275.1
135°	258.7	257.9	257.2	256.6	257.6	258.7	259.7	260.6	261.6	262.4	263.3
137.5°	249.3	248.5	247.9	247.2	248.2	249.1	250.0	250.8	251.6	252.4	253.1
140°	241.1	240.3	239.5	238.6	239.5	240.3	241.1	241.9	242.5	243.2	243.9
142.5°	233.2	232.0	231.2	230.0	230.7	231.2	231.7	232.2	232.8	233.2	233.7
145°	227.8	226.5	225.3	224.1	224.5	225.0	225.4	225.9	226.2	226.6	226.9
147.5°	222.5	221.3	220.2	219.1	219.4	219.7	220.1	220.2	220.6	220.8	221.1
150°	217.4	216.3	215.2	213.9	214.2	214.4	214.7	215.0	215.2	215.3	215.6
152.5°	212.0	210.9	209.8	208.6	208.8	209.1	209.3	209.5	209.7	209.9	210.0
155°	208.2	207.2	206.3	205.4	205.6	205.7	206.0	206.1	206.2	206.4	206.6
157.5°	206.3	205.5	204.8	204.0	204.1	204.1	204.2	204.1	204.3	204.3	204.3
160°	204.6	204.0	203.4	202.7	202.7	202.7	202.8	202.8	202.8	202.7	202.8
162.5°	203.6	202.8	202.1	201.4	201.4	201.4	201.5	201.4	201.5	201.5	201.4
165°	203.3	202.8	202.3	201.7	201.7	201.6	201.6	201.4	201.3	201.2	201.0
167.5°	203.6	203.0	202.6	201.9	202.0	202.0	202.0	202.0	202.2	202.1	202.1
170°	204.3	203.7	203.4	202.9	202.8	202.8	202.7	202.7	202.6	202.5	202.4
172.5°	204.9	204.5	204.1	203.6	203.6	203.5	203.5	203.4	203.3	203.2	203.2
175°	204.1	203.8	203.4	203.1	203.0	203.0	203.0	202.9	202.8	202.8	202.7
177.5°	204.9	204.7	204.5	204.3	204.2	204.2	204.2	204.1	204.1	204.1	204.1
180°	205.2	205.2	205.2	205.2	205.2	205.2	205.2	205.2	205.2	205.2	205.2



TEST NUMBER: P1444716
 CATALOG NUMBER: EHBR1-12-UNV-TA-L935-UPL18

CANDELA DISTRIBUTION (continued):

	357.5°	360°
0°	9606.9	9606.9
2.5°	9644.2	9643.6
5°	9680.0	9679.4
7.5°	9707.2	9707.1
10°	9710.5	9712.1
12.5°	9691.1	9692.5
15°	9634.6	9637.2
17.5°	9526.3	9529.8
20°	9340.0	9343.6
22.5°	9038.2	9039.7
25°	8599.4	8593.3
27.5°	8001.3	7990.6
30°	7240.9	7230.5
32.5°	6334.3	6327.8
35°	5313.8	5309.7
37.5°	4239.4	4231.0
40°	3196.3	3172.0
42.5°	2281.4	2238.8
45°	1576.7	1526.2
47.5°	1100.6	1069.5
50°	834.3	824.2
52.5°	679.8	677.5
55°	573.6	572.5
57.5°	493.8	493.4
60°	431.1	431.0
62.5°	384.3	384.5
65°	351.4	351.5
67.5°	322.4	322.2
70°	288.9	288.7
72.5°	265.8	265.5
75°	248.1	247.8
77.5°	222.7	222.3
80°	192.0	191.5
82.5°	157.9	157.3
85°	117.8	117.8
87.5°	72.1	72.1
90°	39.9	38.7
92.5°	20.6	19.3
95°	23.6	22.0
97.5°	29.2	27.8
100°	37.6	36.4
102.5°	65.0	61.0
105°	115.2	104.2
107.5°	199.3	179.1
110°	348.6	332.3



TEST NUMBER: P1444716
CATALOG NUMBER: EHBR1-12-UNV-TA-L935-UPL18

CANDELA DISTRIBUTION (continued):

	357.5°	360°
112.5°	455.8	448.4
115°	475.4	472.7
117.5°	457.9	458.1
120°	424.0	426.1
122.5°	383.5	385.8
125°	346.0	348.5
127.5°	314.3	315.9
130°	293.0	294.5
132.5°	276.1	276.8
135°	264.0	264.7
137.5°	253.8	254.4
140°	244.3	245.0
142.5°	234.0	234.4
145°	227.2	227.4
147.5°	221.1	221.2
150°	215.7	215.8
152.5°	210.2	210.3
155°	206.6	206.6
157.5°	204.2	204.1
160°	202.7	202.7
162.5°	201.4	201.3
165°	200.8	200.8
167.5°	202.0	202.0
170°	202.3	202.2
172.5°	203.1	203.0
175°	202.7	202.7
177.5°	204.1	204.0
180°	205.2	205.2

Cooper Lighting Solutions Photometric Lab
1121 Highway 74 South
Peachtree City, GA 30269



LM-79-2019: Approved Method: Electrical and Photometric Measurements of Solid-State Lighting Products

Report Prepared for

Cooper Lighting Solutions

Metalux

Report Number: SP1-2506-472-6

Test Date: 08/01/2025

Luminaire Tested: EHBR-60-L935-N

Data in this report applies to families of products including EHBR-60-L935-N

Test Information

Test Method: LM-79-2019
 Report Number: SP1-2506-472-6
 Test Lab: COOPER LIGHTING SOLUTIONS
 Photometer: SP1 - 76IN SPHERE
 Measurement Geometry: 4π
 Issue Date: 08/05/2025
 Manufacturer: COOPER LIGHTING SOLUTIONS
 Product Line: Metalux
 Catalog Number: **EHBR-60-L935-N**
 Description: Elevate Round Highbay at, 60000 lumens, 3500K 90CRI LEDs with N lens

Spectral Parameters

CCT (K): 3406
 CIE u': 0.2394
 CIE v': 0.5094
 Duv: -0.0028
 CIE x: 0.4076
 CIE y: 0.3856
 CIE z: 0.2068
 Peak Wavelength (nm): 630
 Dominant Wavelength (nm): 582
 Purity: 38.0517
 Rf: 91.3
 Rg: 100

CRI (Ra):	94.6		
R1:	96.6	R9:	63.8
R2:	98.4	R10:	94.7
R3:	98.1	R11:	96.6
R4:	95.8	R12:	80.9
R5:	96.2	R13:	97.4
R6:	95.4	R14:	98.3
R7:	91.8	R15:	93.1
R8:	84.4		



Test Conditions

Stabilization Time: 35M
 Operation Time: 1H 35M
 Sphere Temperature (°C): 25.0

REPORT NUMBER: SP1-2506-472-6

Measurement and Test Equipment			
Instrument	Identification Number	Calibration Date	Calibration Due Date
Photometer	76INCH SPHERE IN0058	6/16/2025	12/16/2025
Power Meter	XITRON INXT2011004	1/21/2025	1/21/2026
AC Power Source	CHROMA 61603 IN0063	10/22/2024	10/22/2025
DC Power Source	AGILENT E3634A IN0208	10/22/2024	10/22/2025
Sphere Thermometer	ONSET IN0085	10/22/2024	10/22/2025
Room Thermometer	ONSET IN0046	10/22/2024	10/22/2025

REPORT NUMBER: SP1-2506-472-6

CIE 1931 Chromaticity Diagram



CIE 1931 Chromaticity Diagram with 2017 ANSI 7-Step and 4-Step Quadrangles



Point lies inside the ANSI 3500K 4-step quadrangle

REPORT NUMBER: SP1-2506-472-6

Photopic Flux vs. Wavelength

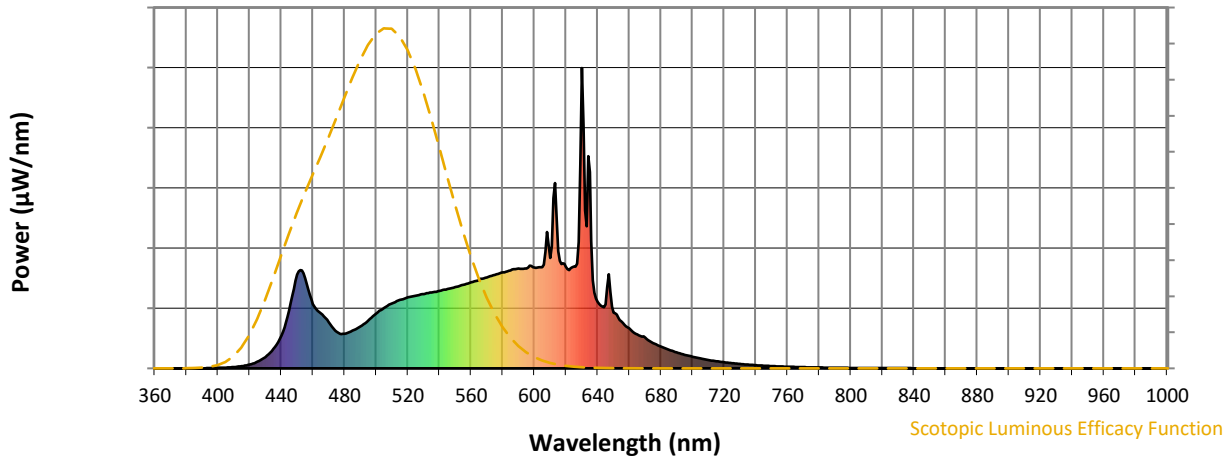


Photopic Lumens: NR

λ (nm)	Power W [^] /nm	Lumens (φ/nm)	λ (nm)	Power W [^] /nm	Lumens (φ/nm)	λ (nm)	Power W [^] /nm	Lumens (φ/nm)	λ (nm)	Power W [^] /nm	Lumens (φ/nm)	λ (nm)	Power W [^] /nm	Lumens (φ/nm)
360	0	NR	490	140	NR	620	338	NR	750	8	NR	880	0	NR
365	0	NR	495	159	NR	625	339	NR	755	7	NR	885	0	NR
370	0	NR	500	182	NR	630	1000	NR	760	5	NR	890	0	NR
375	0	NR	505	202	NR	635	653	NR	765	5	NR	895	0	NR
380	0	NR	510	216	NR	640	222	NR	770	4	NR	900	0	NR
385	0	NR	515	228	NR	645	214	NR	775	3	NR	905	0	NR
390	0	NR	520	236	NR	650	185	NR	780	3	NR	910	0	NR
395	1	NR	525	242	NR	655	157	NR	785	3	NR	915	0	NR
400	2	NR	530	248	NR	660	133	NR	790	2	NR	920	0	NR
405	3	NR	535	253	NR	665	113	NR	795	2	NR	925	0	NR
410	4	NR	540	258	NR	670	103	NR	800	2	NR	930	0	NR
415	7	NR	545	264	NR	675	85	NR	805	1	NR	935	0	NR
420	13	NR	550	270	NR	680	72	NR	810	1	NR	940	0	NR
425	22	NR	555	278	NR	685	62	NR	815	1	NR	945	0	NR
430	38	NR	560	286	NR	690	53	NR	820	1	NR	950	0	NR
435	65	NR	565	295	NR	695	45	NR	825	1	NR	955	0	NR
440	108	NR	570	303	NR	700	39	NR	830	1	NR	960	0	NR
445	193	NR	575	311	NR	705	33	NR	835	1	NR	965	0	NR
450	312	NR	580	319	NR	710	28	NR	840	1	NR	970	0	NR
455	300	NR	585	326	NR	715	24	NR	845	0	NR	975	0	NR
460	214	NR	590	332	NR	720	20	NR	850	0	NR	980	0	NR
465	184	NR	595	333	NR	725	17	NR	855	0	NR	985	0	NR
470	153	NR	600	336	NR	730	15	NR	860	0	NR	990	0	NR
475	122	NR	605	337	NR	735	12	NR	865	0	NR	995	0	NR
480	115	NR	610	367	NR	740	10	NR	870	0	NR	1000	0	NR
485	125	NR	615	390	NR	745	9	NR	875	0	NR			

REPORT NUMBER: SP1-2506-472-6

Scotopic Flux vs. Wavelength



Scotopic Lumens: NR

S/P: 1.62

λ (nm)	Power W [^] /nm	Lumens (ϕ /nm)	λ (nm)	Power W [^] /nm	Lumens (ϕ /nm)	λ (nm)	Power W [^] /nm	Lumens (ϕ /nm)	λ (nm)	Power W [^] /nm	Lumens (ϕ /nm)	λ (nm)	Power W [^] /nm	Lumens (ϕ /nm)
360	0	NR	490	140	NR	620	338	NR	750	8	NR	880	0	NR
365	0	NR	495	159	NR	625	339	NR	755	7	NR	885	0	NR
370	0	NR	500	182	NR	630	1000	NR	760	5	NR	890	0	NR
375	0	NR	505	202	NR	635	653	NR	765	5	NR	895	0	NR
380	0	NR	510	216	NR	640	222	NR	770	4	NR	900	0	NR
385	0	NR	515	228	NR	645	214	NR	775	3	NR	905	0	NR
390	0	NR	520	236	NR	650	185	NR	780	3	NR	910	0	NR
395	1	NR	525	242	NR	655	157	NR	785	3	NR	915	0	NR
400	2	NR	530	248	NR	660	133	NR	790	2	NR	920	0	NR
405	3	NR	535	253	NR	665	113	NR	795	2	NR	925	0	NR
410	4	NR	540	258	NR	670	103	NR	800	2	NR	930	0	NR
415	7	NR	545	264	NR	675	85	NR	805	1	NR	935	0	NR
420	13	NR	550	270	NR	680	72	NR	810	1	NR	940	0	NR
425	22	NR	555	278	NR	685	62	NR	815	1	NR	945	0	NR
430	38	NR	560	286	NR	690	53	NR	820	1	NR	950	0	NR
435	65	NR	565	295	NR	695	45	NR	825	1	NR	955	0	NR
440	108	NR	570	303	NR	700	39	NR	830	1	NR	960	0	NR
445	193	NR	575	311	NR	705	33	NR	835	1	NR	965	0	NR
450	312	NR	580	319	NR	710	28	NR	840	1	NR	970	0	NR
455	300	NR	585	326	NR	715	24	NR	845	0	NR	975	0	NR
460	214	NR	590	332	NR	720	20	NR	850	0	NR	980	0	NR
465	184	NR	595	333	NR	725	17	NR	855	0	NR	985	0	NR
470	153	NR	600	336	NR	730	15	NR	860	0	NR	990	0	NR
475	122	NR	605	337	NR	735	12	NR	865	0	NR	995	0	NR
480	115	NR	610	367	NR	740	10	NR	870	0	NR	1000	0	NR
485	125	NR	615	390	NR	745	9	NR	875	0	NR			

REPORT NUMBER: SP1-2506-472-6

Melanopic Flux vs. Wavelength



Melanopic Lumens: NR M/P: 3.3

λ (nm)	Power W [^] /nm	Lumens (φ/nm)	λ (nm)	Power W [^] /nm	Lumens (φ/nm)	λ (nm)	Power W [^] /nm	Lumens (φ/nm)	λ (nm)	Power W [^] /nm	Lumens (φ/nm)	λ (nm)	Power W [^] /nm	Lumens (φ/nm)
360	0	NR	490	140	NR	620	338	NR	750	8	NR	880	0	NR
365	0	NR	495	159	NR	625	339	NR	755	7	NR	885	0	NR
370	0	NR	500	182	NR	630	1000	NR	760	5	NR	890	0	NR
375	0	NR	505	202	NR	635	653	NR	765	5	NR	895	0	NR
380	0	NR	510	216	NR	640	222	NR	770	4	NR	900	0	NR
385	0	NR	515	228	NR	645	214	NR	775	3	NR	905	0	NR
390	0	NR	520	236	NR	650	185	NR	780	3	NR	910	0	NR
395	1	NR	525	242	NR	655	157	NR	785	3	NR	915	0	NR
400	2	NR	530	248	NR	660	133	NR	790	2	NR	920	0	NR
405	3	NR	535	253	NR	665	113	NR	795	2	NR	925	0	NR
410	4	NR	540	258	NR	670	103	NR	800	2	NR	930	0	NR
415	7	NR	545	264	NR	675	85	NR	805	1	NR	935	0	NR
420	13	NR	550	270	NR	680	72	NR	810	1	NR	940	0	NR
425	22	NR	555	278	NR	685	62	NR	815	1	NR	945	0	NR
430	38	NR	560	286	NR	690	53	NR	820	1	NR	950	0	NR
435	65	NR	565	295	NR	695	45	NR	825	1	NR	955	0	NR
440	108	NR	570	303	NR	700	39	NR	830	1	NR	960	0	NR
445	193	NR	575	311	NR	705	33	NR	835	1	NR	965	0	NR
450	312	NR	580	319	NR	710	28	NR	840	1	NR	970	0	NR
455	300	NR	585	326	NR	715	24	NR	845	0	NR	975	0	NR
460	214	NR	590	332	NR	720	20	NR	850	0	NR	980	0	NR
465	184	NR	595	333	NR	725	17	NR	855	0	NR	985	0	NR
470	153	NR	600	336	NR	730	15	NR	860	0	NR	990	0	NR
475	122	NR	605	337	NR	735	12	NR	865	0	NR	995	0	NR
480	115	NR	610	367	NR	740	10	NR	870	0	NR	1000	0	NR
485	125	NR	615	390	NR	745	9	NR	875	0	NR			

Summary

$R_f = 91.3$
 $R_g = 100$
 $CIE R_a = 94.6$
 $R_9 = 63.8$



Color Vector Graphics

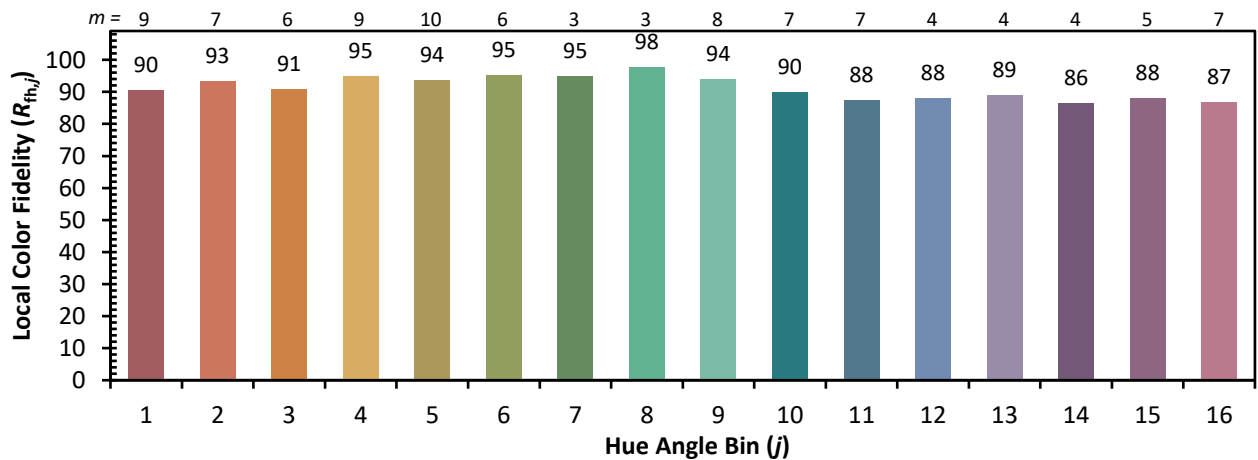
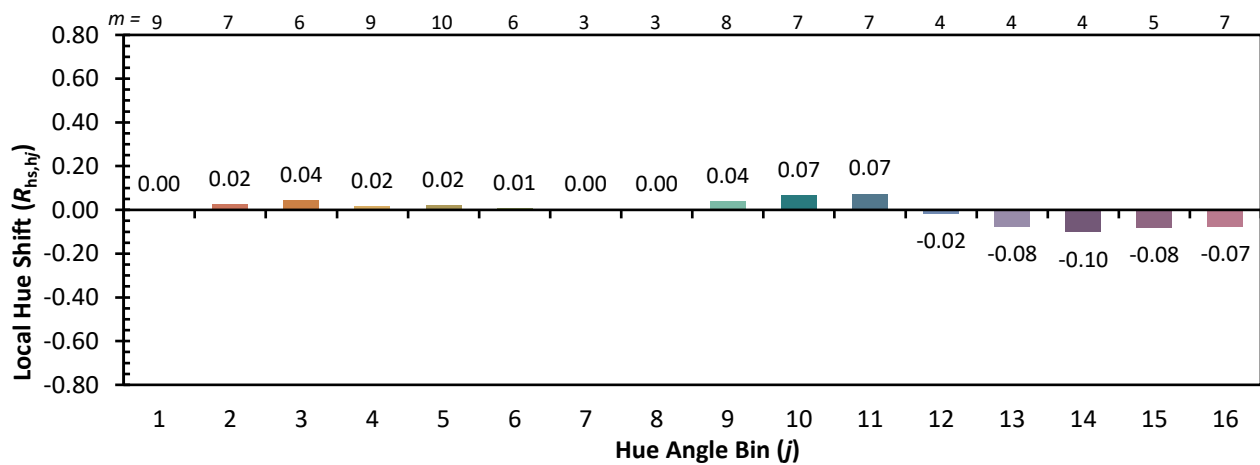
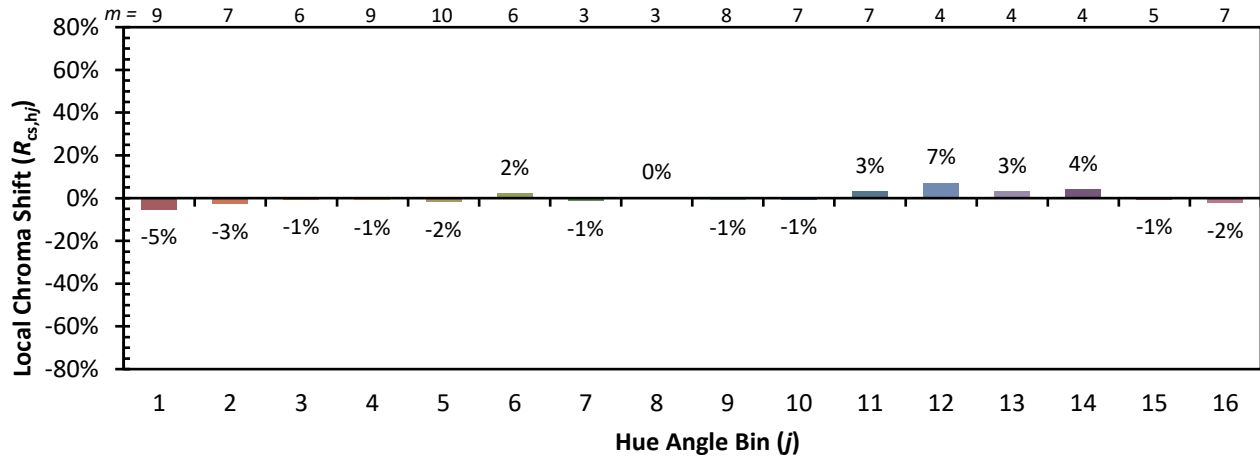


Individual Sample Fidelity Index ($R_{f,i}$)

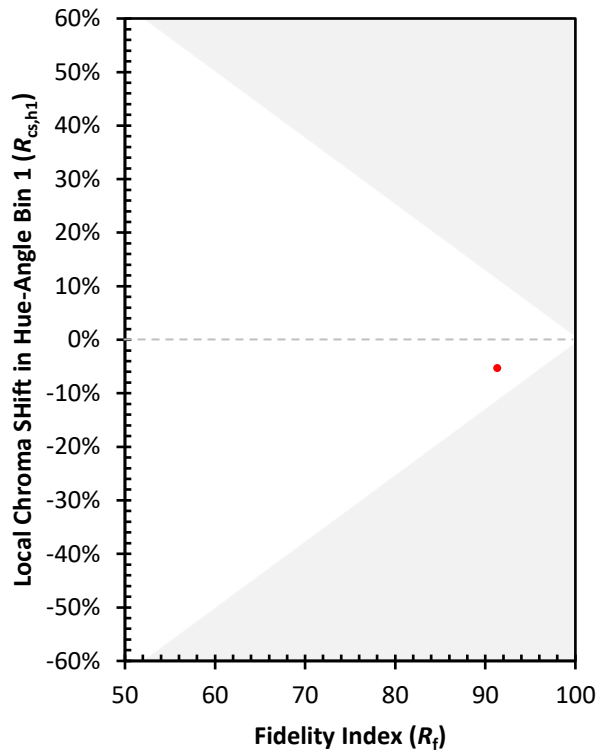
CES01 = 86	CES26 = 94	CES51 = 97	CES76 = 90
CES02 = 63	CES27 = 92	CES52 = 98	CES77 = 86
CES03 = 31	CES28 = 97	CES53 = 98	CES78 = 86
CES04 = 70	CES29 = 97	CES54 = 93	CES79 = 90
CES05 = 50	CES30 = 92	CES55 = 92	CES80 = 91
CES06 = 51	CES31 = 97	CES56 = 96	CES81 = 74
CES07 = 43	CES32 = 89	CES57 = 94	CES82 = 96
CES08 = 41	CES33 = 99	CES58 = 95	CES83 = 94
CES09 = 29	CES34 = 94	CES59 = 98	CES84 = 95
CES10 = 75	CES35 = 97	CES60 = 92	CES85 = 79
CES11 = 58	CES36 = 81	CES61 = 93	CES86 = 79
CES12 = 64	CES37 = 96	CES62 = 86	CES87 = 92
CES13 = 44	CES38 = 87	CES63 = 94	CES88 = 98
CES14 = 74	CES39 = 99	CES64 = 91	CES89 = 84
CES15 = 72	CES40 = 97	CES65 = 90	CES90 = 96
CES16 = 48	CES41 = 96	CES66 = 89	CES91 = 75
CES17 = 49	CES42 = 94	CES67 = 88	CES92 = 76
CES18 = 56	CES43 = 93	CES68 = 89	CES93 = 86
CES19 = 71	CES44 = 99	CES69 = 90	CES94 = 74
CES20 = 67	CES45 = 97	CES70 = 88	CES95 = 83
CES21 = 86	CES46 = 97	CES71 = 83	CES96 = 92
CES22 = 78	CES47 = 91	CES72 = 94	CES97 = 96
CES23 = 91	CES48 = 91	CES73 = 83	CES98 = 95
CES24 = 90	CES49 = 96	CES74 = 90	CES99 = 92
CES25 = 71	CES50 = 98	CES75 = 85	



Color Rendition by Hue-Angle Bin



Measure Comparisons



(END OF REPORT)