

Cooper Lighting Solutions Photometric Lab
1121 Highway 74 South
Peachtree City, GA 30269



Scaled data based on original data using
LM-79-2019 Approved Method: Electrical and Photometric Measurements of Solid-
State Lighting Products

Test Report Prepared for
Cooper Lighting Solutions

Brand: METALUX

Report Number: P1444725

Luminaire Tested: EHBR1-18-UNV-TA-L935-UPL24

Issue Date: 5/1/2026

Test Information

Test Method: LM-79-2019
Report Number: P1444725
REPORT IS A COMBINATION OF REPORTS P1444328 AND P1431635
Test Lab: INNOVATION CENTER
Issue Date: 5/1/2026
Manufacturer: COOPER LIGHTING SOLUTIONS
Product Line: METALUX
Catalog Number: EHBR1-18-UNV-TA-L935-UPL24
Description: Elevate Round Highbay at, 18000 lumens, 3500K 90CRI LEDs with TA lens
Light Source: -
Ballast/Driver: -

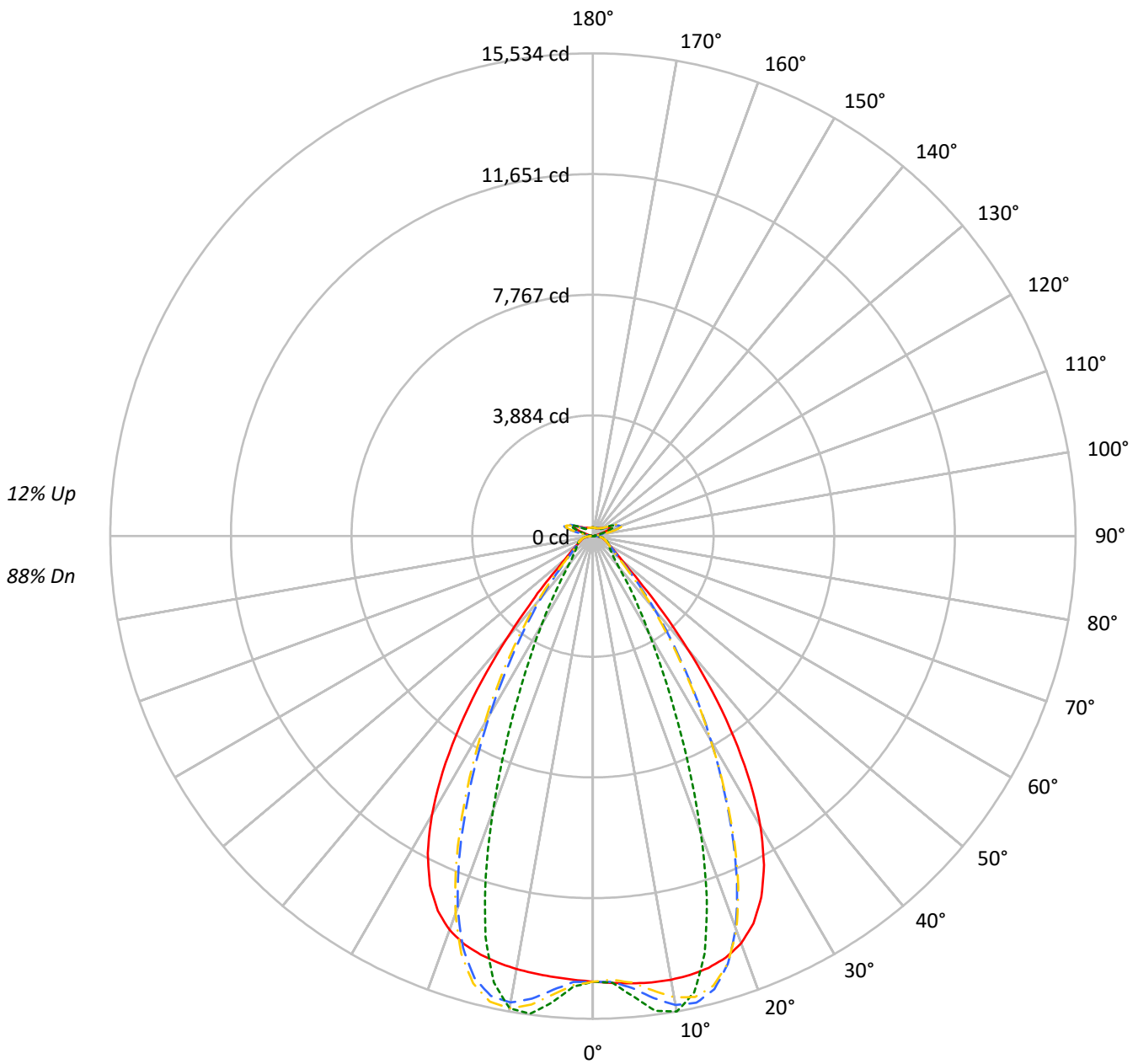
Summary

Lumens per Lamp: N/A
Luminaire Lumens: 18806.3 lumens
Efficiency: N/A
Efficacy: 169.1 lumens/watt
Spacing Criteria (0/90/45): 1.13 / 0.77 / 0.88
Luminous Opening: Vertical Cylinder (Dia: 1.71' x H: 0.1')
CIE Type: Semi-Direct

Input Watts (W): 111.2
Input Voltage (V): NR
Input Current (Ain): NR
Voltage Rise (V): NR
Power Factor: NR
Total Harmonic Distortion (THDi): NR
Frequency (hertz): 60
Stabilization Time: NR
Operation Time: NR
Ambient Temperature (°C): NR
Test Distance: 24 FT

TEST NUMBER: P1444725
CATALOG NUMBER: EHBR1-18-UNV-TA-L935-UPL24

Luminous Intensity Polar Plot



— 0°-180° - - 45°-225° - · - · 90°-270° - · - · 135°-315°



TEST NUMBER: P1444725
 CATALOG NUMBER: EHBR1-18-UNV-TA-L935-UPL24

COEFFICIENT OF UTILIZATION - ZONAL CAVITY METHOD:

RF	20				20				20				20				20				
RC	80				70				50				30				10			0	
RW	70	50	30	10	70	50	30	10	50	30	10	50	30	10	50	30	10	50	30	10	0
RCR																					
0	116	116	116	116	112	112	112	112	104	104	104	97	97	97	91	91	91	88			
1	109	105	102	99	105	102	99	97	96	93	92	90	88	87	84	83	82	79			
2	102	96	91	87	99	93	89	85	88	84	81	83	80	78	79	76	74	72			
3	96	88	82	77	92	86	80	76	81	77	73	77	73	70	73	70	68	66			
4	90	81	74	69	87	79	73	68	75	70	66	72	68	64	68	65	62	60			
5	85	75	68	63	82	73	67	62	70	65	61	67	62	59	64	60	57	55			
6	80	69	63	58	77	68	62	57	65	60	56	62	58	54	60	56	53	51			
7	75	65	58	53	73	63	57	53	61	55	51	59	54	50	56	52	49	47			
8	71	60	54	49	69	59	53	49	57	52	48	55	50	47	53	49	46	44			
9	67	57	50	46	65	56	49	45	54	48	44	52	47	44	50	46	43	41			
10	64	53	47	43	62	52	46	42	51	45	42	49	44	41	47	43	40	39			

AVERAGE LUMINANCE (cd/sqm):

	0°	90°	180°	270°
0°	67338	67338	67338	67338
5°	67664	69637	66717	70549
10°	68229	73114	66593	72630
15°	68564	66277	66476	63608
20°	67855	49374	65634	45683
25°	64227	31226	62104	28332
30°	56107	18765	53934	17149
35°	43180	11775	40697	10430
40°	27316	7386	24991	6941
45°	14079	5754	13846	5660
50°	8254	5118	8001	5038
55°	6324	4842	6089	4799
60°	5350	4946	5123	4882
65°	5026	5166	4833	4990
70°	4911	5409	4666	5206
75°	5250	5736	4966	5484
80°	5433	6353	4925	5800
85°	5115	6127	4134	5249

MAXIMUM LUMINANCE 45°-90°:

Horizontal Angle: 25°
 Vertical Angle: 45°
 Luminance: 21546 cd/sqm



TEST NUMBER: P1444725
 CATALOG NUMBER: EHBR1-18-UNV-TA-L935-UPL24

ZONAL LUMENS:

Zone	Lumens	% Fixture
0°-10°	1413.2	7.5
10°-20°	3975.4	21.1
20°-30°	4527.6	24.1
30°-40°	3254.2	17.3
40°-50°	1500.9	8.0
50°-60°	718.2	3.8
60°-70°	524.0	2.8
70°-80°	398.1	2.1
80°-90°	185.0	1.0
90°-100°	63.9	0.3
100°-110°	388.6	2.1
110°-120°	718.4	3.8
120°-130°	433.9	2.3
130°-140°	271.7	1.4
140°-150°	195.8	1.0
150°-160°	132.7	0.7
160°-170°	78.2	0.4
170°-180°	26.4	0.1
0°-30°	9916.1	52.7
0°-40°	13170.4	70.0
0°-60°	15389.4	81.8
0°-90°	16496.6	87.7
90°-120°	1170.9	6.2
90°-150°	2072.4	11.0
90°-180°	2310.0	12.3
0°-180°	18806.3	100.0

CANDELA DISTRIBUTION:

	0°	90°	180°	270°	360°	Flux
0°	14339	14339	14339	14339	14339	
5°	14447	14869	14245	15063	14447	1381
15°	14384	13904	13946	13345	14384	4053
25°	12826	6236	12402	5658	12826	5814
35°	7925	2161	7469	1914	7925	4864
45°	2278	931	2240	916	2278	1937
55°	855	654	823	648	855	789
65°	525	539	504	521	525	524
75°	370	404	350	386	370	385
85°	176	211	142	180	176	165
90°	56	68	22	25	56	34
95°	29	33	30	33	29	28
105°	138	180	92	180	138	183
115°	624	762	654	762	624	576
125°	462	492	524	492	462	421
135°	352	320	380	321	352	275
145°	304	302	325	304	304	192
155°	278	282	297	284	278	129
165°	271	273	282	274	271	77
175°	274	277	280	278	274	26
180°	278	278	278	278	278	



TEST NUMBER: P1444725
 CATALOG NUMBER: EHBR1-18-UNV-TA-L935-UPL24

CANDELA DISTRIBUTION (FULL):

	0°	2.5°	5°	7.5°	10°	12.5°	15°	17.5°	20°	22.5°	25°
0°	14339.1	14339.1	14339.1	14339.1	14339.1	14339.1	14339.1	14339.1	14339.1	14339.1	14339.1
2.5°	14394.0	14392.8	14392.6	14391.6	14391.3	14391.3	14390.8	14389.6	14388.9	14387.2	14385.4
5°	14447.3	14446.7	14447.1	14447.2	14446.2	14444.0	14440.5	14436.1	14430.8	14425.6	14421.1
7.5°	14488.7	14489.7	14490.9	14490.7	14487.5	14482.2	14475.1	14471.1	14473.4	14481.2	14499.1
10°	14496.2	14502.4	14504.7	14504.0	14497.7	14493.2	14495.0	14510.1	14540.4	14580.8	14635.9
12.5°	14466.8	14474.3	14474.1	14471.6	14465.6	14471.7	14493.7	14538.9	14603.8	14683.3	14776.6
15°	14384.3	14394.0	14391.3	14388.1	14384.0	14404.3	14448.2	14526.7	14626.9	14739.1	14853.9
17.5°	14224.0	14235.9	14230.1	14226.5	14223.0	14261.0	14336.5	14451.5	14577.6	14704.6	14813.3
20°	13946.1	13954.0	13940.3	13933.9	13939.3	14013.8	14125.0	14271.8	14404.7	14524.7	14599.1
22.5°	13492.5	13502.4	13476.8	13473.8	13505.4	13619.6	13760.3	13924.6	14049.5	14144.5	14173.2
25°	12826.1	12835.8	12805.3	12823.6	12877.4	13032.9	13200.6	13376.2	13482.7	13553.2	13533.8
27.5°	11926.7	11935.4	11906.5	11943.8	12029.0	12233.4	12430.6	12621.1	12716.1	12765.5	12702.9
30°	10792.2	10810.5	10776.3	10828.3	10958.3	11223.7	11449.7	11663.3	11758.0	11795.6	11698.3
32.5°	9444.9	9471.0	9433.3	9510.5	9691.9	10010.7	10267.4	10506.2	10610.8	10653.8	10543.8
35°	7925.1	7962.6	7919.4	8035.3	8259.1	8614.0	8898.3	9164.9	9288.9	9349.7	9238.9
37.5°	6315.1	6350.8	6327.4	6482.2	6727.9	7095.7	7385.9	7673.4	7813.6	7904.8	7817.5
40°	4734.5	4767.1	4784.8	4961.7	5192.8	5539.6	5818.4	6102.8	6259.5	6374.0	6320.1
42.5°	3341.6	3374.5	3434.6	3605.4	3798.1	4085.1	4323.9	4579.3	4729.0	4851.2	4830.4
45°	2277.9	2316.1	2391.4	2531.2	2670.6	2876.6	3051.9	3250.5	3372.8	3484.7	3486.0
47.5°	1596.2	1623.1	1690.4	1785.8	1876.7	2134.5	2145.1	2242.7	2324.9	2408.6	2419.4
50°	1230.2	1246.4	1282.1	1335.3	1386.8	1453.7	1514.9	1585.7	1636.3	1682.1	1693.1
52.5°	1011.1	1021.4	1039.6	1068.4	1098.3	1134.6	1167.4	1206.3	1233.8	1258.3	1263.5
55°	854.6	863.1	890.1	895.6	929.8	936.3	950.9	974.6	990.6	1005.3	1008.9
57.5°	736.5	742.6	748.4	760.6	771.2	786.4	798.7	815.7	825.8	836.5	837.4
60°	643.2	647.7	651.8	660.3	667.5	678.1	686.6	698.1	705.4	713.4	714.3
62.5°	573.9	577.1	579.8	585.4	590.6	598.7	605.4	615.0	621.8	628.0	629.4
65°	524.6	526.9	528.7	532.9	537.4	544.3	550.4	558.3	563.3	568.0	569.0
67.5°	480.9	483.2	484.9	488.8	491.9	497.1	501.2	507.1	510.8	514.6	514.7
70°	430.9	432.9	434.3	437.9	440.4	444.8	448.2	453.4	457.3	461.5	462.6
72.5°	396.2	397.4	399.2	402.6	406.0	410.7	415.2	420.7	425.3	429.7	431.6
75°	369.8	371.2	372.5	375.3	377.7	381.7	385.0	390.1	394.1	398.8	401.1
77.5°	331.8	333.4	334.4	337.3	339.3	343.2	345.7	350.2	353.5	357.7	359.8
80°	285.8	287.3	288.1	290.8	292.4	295.9	298.4	302.7	305.4	309.7	312.2
82.5°	234.8	236.3	236.7	239.3	240.2	243.1	244.8	249.3	252.7	258.2	262.0
85°	175.8	176.4	177.2	176.6	180.2	180.4	184.4	185.2	190.4	191.9	197.9
87.5°	107.5	109.1	109.9	112.4	113.4	115.8	116.6	119.2	120.6	123.6	125.0
90°	55.7	58.9	60.5	64.0	65.4	68.7	70.1	73.6	75.1	78.9	81.3
92.5°	25.6	27.5	29.2	31.2	32.9	35.0	36.9	38.8	40.6	42.7	46.2
95°	29.4	31.4	33.4	35.5	37.5	39.6	41.6	43.7	45.7	47.8	53.7
97.5°	37.0	38.8	40.5	42.3	44.0	45.9	47.6	49.4	51.1	52.9	60.0
100°	48.5	50.0	51.5	53.0	54.5	56.0	57.5	59.0	60.5	62.0	75.1
102.5°	80.8	86.2	91.4	96.8	102.1	107.3	112.7	118.0	123.3	128.6	156.5
105°	137.9	152.3	166.8	181.2	195.6	210.0	224.4	238.8	253.2	267.5	313.0
107.5°	236.7	263.3	290.0	316.7	343.4	370.1	396.8	423.3	450.1	476.6	522.8
110°	438.8	460.2	481.7	503.2	524.7	546.2	567.5	588.9	610.4	631.8	665.4



TEST NUMBER: P1444725
 CATALOG NUMBER: EHBR1-18-UNV-TA-L935-UPL24

CANDELA DISTRIBUTION (continued):

	0°	2.5°	5°	7.5°	10°	12.5°	15°	17.5°	20°	22.5°	25°
112.5°	592.1	601.8	611.5	621.3	631.0	640.8	650.5	660.2	669.9	679.5	703.6
115°	624.4	627.8	631.3	634.6	638.1	641.5	644.9	648.3	651.7	655.0	671.4
117.5°	605.4	604.9	604.3	603.9	603.2	602.7	602.1	601.5	600.8	600.3	609.5
120°	563.5	560.6	557.8	554.8	551.9	548.8	545.9	543.0	540.0	536.9	541.0
122.5°	510.6	507.1	503.7	500.2	496.7	493.1	489.6	486.0	482.4	478.9	480.4
125°	461.7	458.1	454.8	451.2	447.6	443.9	440.4	436.8	433.1	429.5	430.4
127.5°	419.0	416.6	414.2	411.7	409.2	406.5	404.0	401.4	398.9	396.2	396.6
130°	391.1	388.9	386.7	384.5	382.3	379.8	377.5	375.1	372.9	370.4	371.1
132.5°	368.1	366.6	365.2	363.5	362.0	360.2	358.6	356.7	355.2	353.4	354.0
135°	352.5	351.0	349.8	348.3	346.9	345.2	343.7	342.0	340.4	338.8	339.6
137.5°	339.1	338.0	336.7	335.3	334.0	332.4	331.1	329.5	328.1	326.6	327.3
140°	326.9	325.8	324.7	323.5	322.3	321.0	319.7	318.3	316.9	315.5	316.5
142.5°	313.4	312.5	311.7	310.8	309.9	308.7	307.6	306.5	305.5	304.3	305.6
145°	304.3	303.6	303.0	302.2	301.4	300.4	299.6	298.5	297.8	296.8	298.2
147.5°	296.5	295.9	295.4	294.7	294.2	293.4	292.7	291.8	291.2	290.4	291.7
150°	289.5	288.9	288.5	287.9	287.2	286.6	285.9	285.1	284.5	283.7	284.9
152.5°	282.3	281.8	281.3	280.8	280.1	279.4	278.9	278.2	277.5	276.8	277.9
155°	277.8	277.2	276.7	276.2	275.6	275.0	274.3	273.7	273.1	272.4	273.3
157.5°	274.7	274.3	273.9	273.5	273.1	272.5	272.1	271.5	271.2	270.6	271.4
160°	273.0	272.6	272.2	271.7	271.3	270.8	270.4	269.9	269.5	269.0	269.5
162.5°	271.4	270.9	270.5	270.1	269.7	269.2	268.8	268.4	268.0	267.5	268.2
165°	270.9	270.7	270.4	270.2	269.9	269.6	269.4	269.1	268.8	268.5	268.9
167.5°	272.9	272.4	272.2	271.7	271.4	271.0	270.6	270.2	270.0	269.5	270.0
170°	273.3	273.0	272.8	272.6	272.4	272.3	272.1	271.8	271.6	271.4	271.8
172.5°	274.4	274.2	274.1	274.0	273.8	273.6	273.5	273.3	273.3	273.0	273.5
175°	274.2	274.0	273.9	273.8	273.7	273.6	273.5	273.4	273.4	273.3	273.5
177.5°	275.9	275.8	275.8	275.8	275.8	275.7	275.7	275.6	275.5	275.5	275.7
180°	277.5	277.5	277.5	277.5	277.5	277.5	277.5	277.5	277.5	277.5	277.5



TEST NUMBER: P1444725
 CATALOG NUMBER: EHBR1-18-UNV-TA-L935-UPL24

CANDELA DISTRIBUTION (continued):

	27.5°	30°	32.5°	35°	37.5°	40°	42.5°	45°	47.5°	50°	52.5°
0°	14339.1	14339.1	14339.1	14339.1	14339.1	14339.1	14339.1	14339.1	14339.1	14339.1	14339.1
2.5°	14384.0	14382.3	14379.9	14376.8	14374.2	14371.2	14364.0	14361.9	14364.3	14365.9	14369.2
5°	14418.2	14419.2	14419.6	14426.1	14431.8	14445.8	14556.1	14600.0	14633.9	14655.4	14688.1
7.5°	14521.2	14554.4	14587.2	14631.3	14669.3	14720.7	14913.7	14995.9	15054.3	15096.3	15147.9
10°	14695.9	14768.3	14836.1	14915.6	14984.0	15062.2	15241.9	15321.9	15372.4	15409.2	15443.6
12.5°	14871.8	14972.1	15062.8	15151.4	15225.3	15293.2	15356.4	15384.4	15386.7	15387.9	15369.7
15°	14963.4	15059.4	15139.2	15197.8	15241.3	15260.5	15151.7	15094.6	15022.5	14963.1	14865.3
17.5°	14905.6	14963.1	14997.7	14994.2	14976.3	14916.1	14608.0	14438.5	14270.2	14118.7	13919.9
20°	14648.5	14644.1	14614.1	14529.0	14426.5	14267.1	13738.8	13434.1	13139.3	12880.6	12566.6
22.5°	14170.3	14095.0	13990.1	13806.7	13602.9	13324.3	12567.3	12119.0	11708.8	11346.4	10940.5
25°	13477.4	13322.6	13129.1	12837.8	12521.1	12114.9	11181.8	10624.3	10131.7	9704.5	9236.1
27.5°	12590.5	12357.3	12073.8	11670.7	11241.7	10721.2	9686.8	9071.4	8542.7	8084.7	7586.2
30°	11540.7	11237.4	10871.2	10370.9	9853.4	9263.1	8214.0	7590.7	7055.5	6584.4	6085.5
32.5°	10354.2	9999.0	9569.9	9008.5	8448.7	7841.8	6828.6	6225.3	5714.0	5260.8	4809.3
35°	9045.6	8664.7	8210.7	7638.0	7081.7	6491.7	5562.0	5018.0	4566.4	4165.9	3801.2
37.5°	7641.9	7267.9	6836.4	6296.6	5780.7	5246.1	4443.9	3988.0	3609.2	3276.7	2995.1
40°	6182.4	5855.2	5481.8	5015.2	4574.9	4129.6	3471.1	3109.3	2810.3	2556.7	2345.8
42.5°	4740.8	4487.2	4200.9	3832.1	3495.3	3156.2	2649.4	2381.3	2159.8	1977.2	1828.1
45°	3439.7	3269.9	3078.0	2821.6	2588.5	2352.0	1991.3	1802.9	1658.7	1540.9	1441.4
47.5°	2404.5	2306.1	2300.1	2063.2	1892.2	1747.6	1515.2	1396.2	1307.8	1236.5	1173.5
50°	1688.6	1641.0	1581.8	1497.3	1418.0	1336.2	1194.6	1122.7	1070.9	1027.7	987.9
52.5°	1262.3	1237.7	1206.1	1161.3	1118.3	1072.3	982.7	936.9	920.6	880.4	848.9
55°	1008.3	994.1	976.2	949.8	923.6	913.2	836.5	802.4	780.9	765.0	748.0
57.5°	837.5	826.9	816.3	798.5	783.3	765.0	724.2	706.8	694.0	684.6	672.9
60°	714.4	708.1	702.1	691.6	683.5	673.6	647.7	637.9	631.2	625.5	618.0
62.5°	630.5	627.3	624.2	618.7	614.5	609.1	591.4	586.7	583.3	580.5	576.0
65°	570.0	567.6	566.0	562.3	560.2	557.0	541.8	538.6	536.5	535.5	532.9
67.5°	515.0	512.5	511.4	508.8	507.9	506.0	493.5	491.8	491.0	491.4	490.4
70°	463.6	462.6	463.0	462.7	463.9	464.2	456.7	456.6	457.4	459.0	459.1
72.5°	432.8	432.8	433.3	433.6	434.7	435.2	429.0	428.7	429.1	430.2	430.2
75°	403.4	403.9	405.5	406.0	407.3	407.6	399.3	398.3	398.4	399.5	399.1
77.5°	362.8	364.5	367.6	369.1	371.8	372.2	362.9	361.8	361.8	363.0	362.0
80°	316.8	320.1	324.9	328.3	332.2	333.8	324.2	321.9	319.8	319.5	317.6
82.5°	267.8	271.9	277.7	280.7	284.9	285.9	269.8	266.8	265.0	265.2	263.5
85°	204.5	207.5	212.8	214.5	217.1	216.9	198.6	190.8	192.9	189.6	192.1
87.5°	128.2	130.1	133.3	133.8	135.0	134.7	116.4	112.7	111.7	111.8	110.4
90°	85.7	88.5	92.9	94.5	97.9	99.2	85.7	85.6	82.9	82.4	79.2
92.5°	49.9	53.5	57.2	60.8	64.5	68.2	70.1	73.1	69.5	65.6	62.0
95°	59.6	65.6	71.6	77.7	83.7	89.6	95.6	101.6	96.0	90.5	84.8
97.5°	67.1	74.1	81.1	88.3	95.3	102.4	109.5	116.6	110.6	104.5	98.5
100°	88.3	101.5	114.7	127.8	141.0	154.3	167.4	180.6	169.0	157.4	145.8
102.5°	184.6	212.6	240.5	268.6	296.6	324.6	352.7	380.7	354.1	327.5	300.8
105°	358.5	403.9	449.3	494.6	539.9	585.4	630.9	676.3	633.8	591.3	548.7
107.5°	568.7	614.9	660.8	706.8	752.9	798.9	845.2	891.3	849.9	808.3	766.9
110°	699.1	732.8	766.4	800.0	833.6	867.3	901.3	934.9	910.0	885.1	860.2



TEST NUMBER: P1444725
 CATALOG NUMBER: EHBR1-18-UNV-TA-L935-UPL24

CANDELA DISTRIBUTION (continued):

	27.5°	30°	32.5°	35°	37.5°	40°	42.5°	45°	47.5°	50°	52.5°
112.5°	727.7	751.8	775.8	799.9	823.9	847.9	872.5	896.6	884.2	871.7	859.3
115°	687.6	703.9	720.2	736.5	752.8	768.9	785.8	802.2	798.2	794.3	790.4
117.5°	618.6	627.7	636.9	646.0	655.0	664.2	674.0	683.4	684.1	684.9	685.7
120°	544.9	548.9	552.7	556.7	560.5	564.5	569.2	573.3	576.9	580.2	583.8
122.5°	482.1	483.6	485.2	486.8	488.2	489.8	492.4	494.2	496.7	499.1	501.7
125°	431.2	432.1	433.0	433.9	434.5	435.4	437.5	438.5	438.8	439.1	439.4
127.5°	396.8	397.2	397.3	397.7	397.8	398.2	399.7	400.2	399.0	397.7	396.4
130°	371.5	372.0	372.5	373.0	373.5	374.1	375.9	376.9	374.5	372.0	369.7
132.5°	354.6	355.3	355.8	356.5	357.2	357.8	359.9	360.9	358.2	355.4	352.7
135°	340.2	341.1	341.8	342.6	343.3	344.2	346.5	347.7	345.1	342.4	339.8
137.5°	328.0	328.8	329.5	330.4	331.2	331.9	334.5	335.6	333.6	331.4	329.5
140°	317.3	318.2	319.2	320.1	321.0	322.1	324.8	326.2	324.6	323.0	321.4
142.5°	306.7	308.0	309.1	310.5	311.8	313.0	316.3	317.9	316.9	315.6	314.5
145°	299.4	300.9	302.2	303.7	305.1	306.6	310.1	312.0	311.4	310.6	310.0
147.5°	292.7	294.1	295.4	296.6	298.0	299.5	303.1	305.0	304.5	304.2	303.7
150°	286.2	287.5	288.8	290.1	291.6	292.9	297.0	299.0	298.7	298.3	297.9
152.5°	279.1	280.1	281.4	282.6	283.9	285.1	289.8	291.7	291.5	291.0	290.8
155°	274.2	275.2	276.0	277.1	278.0	279.1	283.9	285.8	285.6	285.4	285.2
157.5°	271.9	272.6	273.2	274.0	274.6	275.4	280.1	282.0	281.8	281.6	281.5
160°	270.1	270.6	271.1	271.7	272.3	272.9	277.7	279.3	279.2	279.1	278.9
162.5°	268.7	269.6	270.2	270.9	271.5	272.4	277.2	279.1	278.8	278.5	278.2
165°	269.4	269.7	270.2	270.7	271.2	271.6	276.2	277.6	277.5	277.2	277.2
167.5°	270.4	270.9	271.3	271.8	272.3	272.9	277.1	278.5	278.4	278.2	278.2
170°	272.2	272.5	272.9	273.3	273.8	274.3	277.8	279.0	278.8	278.4	278.2
172.5°	273.9	274.3	274.8	275.3	275.7	276.2	279.2	280.3	280.2	280.0	279.7
175°	273.9	274.2	274.6	275.0	275.3	275.6	278.1	278.9	278.8	278.7	278.6
177.5°	276.0	276.2	276.5	276.8	277.1	277.3	278.8	279.3	279.2	279.2	279.1
180°	277.5	277.5	277.5	277.5	277.5	277.5	277.5	277.5	277.5	277.5	277.5



TEST NUMBER: P1444725
 CATALOG NUMBER: EHBR1-18-UNV-TA-L935-UPL24

CANDELA DISTRIBUTION (continued):

	55°	57.5°	60°	62.5°	65°	67.5°	70°	72.5°	75°	77.5°	80°
0°	14339.1	14339.1	14339.1	14339.1	14339.1	14339.1	14339.1	14339.1	14339.1	14339.1	14339.1
2.5°	14369.9	14375.0	14375.7	14381.6	14381.2	14388.2	14387.1	14392.8	14389.4	14394.1	14390.1
5°	14707.5	14738.1	14754.0	14783.9	14793.4	14820.1	14827.6	14852.0	14853.0	14872.4	14868.0
7.5°	15184.6	15229.7	15256.5	15293.4	15312.2	15342.9	15356.5	15379.2	15386.6	15404.6	15406.0
10°	15469.6	15491.4	15506.7	15517.1	15526.5	15530.9	15536.0	15534.7	15536.0	15534.0	15538.5
12.5°	15357.5	15325.5	15304.4	15264.3	15241.0	15196.8	15175.0	15132.4	15117.0	15080.4	15075.2
15°	14789.8	14678.4	14599.6	14485.0	14413.0	14300.3	14234.4	14132.7	14086.3	14005.4	13984.2
17.5°	13755.3	13548.4	13388.2	13182.7	13040.2	12848.1	12727.4	12568.4	12481.4	12353.2	12308.9
20°	12304.9	11998.6	11758.4	11472.2	11267.4	11012.3	10848.9	10642.8	10523.2	10365.8	10302.0
22.5°	10602.0	10220.8	9920.7	9582.6	9335.6	9051.1	8855.4	8632.5	8502.4	8331.3	8255.6
25°	8846.9	8426.4	8092.9	7736.7	7475.6	7190.5	6994.8	6775.7	6641.0	6478.7	6403.5
27.5°	7168.2	6742.7	6420.3	6089.2	5849.6	5592.4	5415.8	5224.5	5105.1	4966.4	4895.6
30°	5686.9	5311.5	5037.2	4762.4	4563.2	4354.3	4207.5	4049.0	3944.2	3825.4	3758.0
32.5°	4480.1	4190.2	3975.4	3757.4	3594.3	3419.8	3292.9	3153.0	3058.4	2952.5	2891.4
35°	3548.1	3323.0	3151.7	2972.1	2832.0	2683.4	2571.5	2450.9	2366.0	2274.7	2222.0
37.5°	2803.4	2624.4	2483.3	2334.3	2219.1	2096.0	2054.5	1916.0	1828.0	1755.2	1704.8
40°	2200.1	2057.7	1941.1	1827.1	1733.2	1639.7	1564.8	1490.8	1434.0	1381.9	1345.9
42.5°	1718.1	1615.0	1529.8	1446.2	1377.8	1309.7	1255.4	1204.4	1166.2	1132.1	1108.9
45°	1365.8	1294.9	1235.7	1176.9	1128.6	1083.1	1046.5	1014.0	989.3	968.9	954.4
47.5°	1122.0	1073.5	1031.7	992.0	959.3	929.4	905.0	897.0	870.4	852.5	845.7
50°	953.5	924.3	892.6	863.3	841.3	819.6	803.6	788.1	778.2	769.9	767.4
52.5°	827.8	805.5	787.8	769.2	754.8	739.3	728.3	718.0	712.5	708.2	707.7
55°	734.4	718.7	707.0	694.6	685.9	676.8	671.1	665.7	663.3	661.1	661.3
57.5°	663.6	653.2	645.6	637.5	632.8	628.4	627.0	625.6	626.4	626.7	627.9
60°	612.1	605.3	600.5	595.9	593.9	592.6	593.6	594.8	597.4	599.4	601.2
62.5°	572.6	568.7	566.4	563.9	563.6	563.8	565.9	568.0	571.2	573.4	575.2
65°	531.9	529.7	529.0	527.4	528.2	528.7	531.2	532.8	535.9	537.8	540.0
67.5°	490.9	490.3	490.9	490.9	492.2	493.5	495.9	497.8	500.4	502.1	503.9
70°	460.5	460.8	461.9	462.0	463.6	464.5	466.6	467.8	470.1	471.6	473.7
72.5°	431.1	430.6	430.9	430.1	430.7	430.4	431.6	432.2	434.2	435.3	438.0
75°	399.6	398.3	398.0	396.5	396.6	395.6	396.1	396.0	397.3	397.9	399.8
77.5°	361.7	359.5	358.4	356.0	355.9	355.0	356.0	356.5	358.9	360.1	362.3
80°	316.3	312.8	311.2	308.4	308.9	308.8	311.1	312.9	315.8	316.2	319.0
82.5°	262.9	259.3	257.7	255.0	255.6	255.6	257.8	258.1	260.6	261.7	264.8
85°	188.2	189.6	185.8	186.1	185.3	186.8	188.2	190.1	192.1	195.6	198.2
87.5°	110.8	110.4	111.8	111.8	113.7	114.8	117.9	119.6	123.1	125.8	130.7
90°	77.9	74.9	74.6	72.6	73.2	71.3	72.0	70.1	71.1	70.2	71.9
92.5°	58.0	54.3	50.3	46.6	42.7	39.1	37.2	35.5	33.6	32.0	30.1
95°	79.3	73.7	68.2	62.5	57.0	51.4	49.3	47.3	45.2	43.2	41.1
97.5°	92.5	86.5	80.5	74.5	68.5	62.5	61.2	59.8	58.5	57.1	55.7
100°	134.1	122.6	111.0	99.3	87.8	76.2	75.1	74.0	73.0	71.9	70.8
102.5°	274.3	247.8	221.2	194.6	168.0	141.4	136.8	132.1	127.5	122.9	118.3
105°	506.2	463.7	421.2	378.7	336.2	293.7	281.0	268.3	255.6	242.9	230.3
107.5°	725.4	683.9	642.5	601.1	559.7	518.2	498.1	478.1	458.1	438.0	418.0
110°	835.2	810.3	785.6	760.6	735.8	711.0	691.9	672.8	653.6	634.5	615.4



TEST NUMBER: P1444725
 CATALOG NUMBER: EHBR1-18-UNV-TA-L935-UPL24

CANDELA DISTRIBUTION (continued):

	55°	57.5°	60°	62.5°	65°	67.5°	70°	72.5°	75°	77.5°	80°
112.5°	846.9	834.5	822.0	809.5	797.2	784.8	775.5	766.2	757.0	747.6	738.2
115°	786.5	782.6	778.7	774.9	771.1	767.1	766.5	765.9	765.2	764.6	764.0
117.5°	686.5	687.4	688.1	689.0	689.9	690.7	695.7	700.7	705.8	710.8	716.1
120°	587.2	590.7	594.2	597.7	601.3	604.8	611.5	618.2	625.0	631.8	638.7
122.5°	504.0	506.5	508.9	511.5	514.0	516.5	523.2	529.8	536.6	543.3	550.2
125°	439.6	439.8	440.0	440.3	440.5	440.9	446.5	451.9	457.5	463.1	468.8
127.5°	395.2	393.8	392.5	391.3	389.9	388.7	392.0	395.3	398.7	402.0	405.5
130°	367.2	364.9	362.4	360.1	357.6	355.3	356.6	358.0	359.5	360.9	362.4
132.5°	349.8	347.0	344.1	341.3	338.4	335.7	335.8	335.9	336.0	336.2	336.4
135°	337.1	334.4	331.6	329.0	326.2	323.7	323.1	322.4	321.9	321.3	320.8
137.5°	327.4	325.3	323.1	321.1	318.8	316.9	315.9	315.0	314.1	313.4	312.7
140°	319.7	318.1	316.3	314.7	313.0	311.4	310.6	310.0	309.1	308.6	308.0
142.5°	313.1	312.0	310.8	309.5	308.3	307.2	306.3	305.7	305.1	304.4	303.8
145°	309.1	308.4	307.6	306.9	306.1	305.3	304.7	304.3	303.7	303.3	302.9
147.5°	303.3	302.8	302.4	301.9	301.4	300.9	300.5	300.4	299.9	299.7	299.4
150°	297.5	297.1	296.6	296.3	295.7	295.4	295.1	295.0	294.8	294.8	294.6
152.5°	290.3	290.0	289.6	289.2	288.8	288.4	288.2	288.2	288.0	287.9	287.8
155°	284.9	284.7	284.5	284.2	284.0	283.8	283.5	283.2	283.0	282.8	282.5
157.5°	281.2	281.1	280.8	280.6	280.3	280.1	279.9	279.7	279.4	279.2	279.0
160°	278.7	278.5	278.2	278.1	277.8	277.6	277.2	276.9	276.4	276.2	275.8
162.5°	277.9	277.5	277.2	276.9	276.5	276.2	275.9	275.7	275.4	275.3	275.0
165°	276.9	276.7	276.5	276.2	276.1	275.9	275.5	275.2	274.8	274.5	274.2
167.5°	277.9	277.8	277.5	277.3	277.1	276.9	276.5	276.2	275.9	275.5	275.1
170°	278.0	277.6	277.3	277.1	276.7	276.4	276.1	275.8	275.3	275.2	274.7
172.5°	279.4	279.2	278.9	278.7	278.3	278.2	277.8	277.6	277.2	277.0	276.7
175°	278.5	278.5	278.4	278.2	278.2	278.2	278.1	278.0	277.9	277.8	277.6
177.5°	279.1	279.1	279.1	279.1	279.0	279.0	278.8	278.6	278.5	278.2	278.2
180°	277.5	277.5	277.5	277.5	277.5	277.5	277.5	277.5	277.5	277.5	277.5



TEST NUMBER: P1444725
 CATALOG NUMBER: EHBR1-18-UNV-TA-L935-UPL24

CANDELA DISTRIBUTION (continued):

	82.5°	85°	87.5°	90°	92.5°	95°	97.5°	100°	102.5°	105°	107.5°
0°	14339.1	14339.1	14339.1	14339.1	14339.1	14339.1	14339.1	14339.1	14339.1	14339.1	14339.1
2.5°	14394.3	14390.7	14392.4	14385.6	14387.2	14379.1	14378.4	14369.2	14368.3	14359.6	14356.3
5°	14881.7	14873.7	14882.7	14868.6	14871.4	14853.0	14851.5	14827.8	14819.7	14789.9	14777.2
7.5°	15417.3	15414.3	15419.8	15408.0	15407.7	15391.3	15384.5	15363.3	15350.1	15319.0	15299.1
10°	15534.7	15537.4	15532.9	15534.0	15527.7	15525.9	15519.3	15515.2	15504.5	15496.4	15484.5
12.5°	15047.4	15050.3	15031.7	15043.5	15034.2	15055.9	15054.2	15079.8	15083.8	15116.1	15128.4
15°	13921.2	13917.8	13882.1	13904.5	13892.5	13940.2	13950.9	14015.1	14049.5	14131.8	14182.5
17.5°	12220.0	12210.9	12160.7	12188.0	12174.1	12244.4	12268.1	12370.7	12434.7	12567.5	12662.2
20°	10192.1	10174.5	10115.7	10147.8	10133.5	10213.3	10247.0	10371.1	10453.8	10629.6	10754.8
22.5°	8139.0	8111.2	8053.6	8083.5	8070.0	8152.8	8196.7	8321.2	8415.8	8596.4	8742.5
25°	6295.4	6270.5	6214.9	6235.9	6230.8	6300.9	6339.9	6457.6	6550.6	6722.6	6862.0
27.5°	4801.6	4775.8	4725.5	4740.4	4735.3	4794.9	4831.7	4930.1	5010.1	5154.9	5277.4
30°	3674.9	3643.8	3601.2	3609.4	3605.9	3654.2	3688.6	3771.4	3840.0	3962.4	4067.9
32.5°	2816.8	2785.6	2746.4	2750.3	2745.1	2783.1	2811.3	2883.4	2943.1	3047.2	3139.0
35°	2155.3	2191.8	2108.1	2161.1	2105.9	2186.9	2157.8	2202.8	2254.2	2341.9	2418.4
37.5°	1656.9	1631.4	1609.9	1607.6	1607.6	1626.2	1648.4	1691.8	1737.1	1802.4	1869.8
40°	1313.0	1295.1	1281.2	1280.2	1281.2	1294.5	1310.9	1340.9	1374.1	1420.9	1470.5
42.5°	1089.0	1077.2	1068.7	1068.2	1070.8	1080.3	1091.7	1109.4	1131.0	1161.5	1195.4
45°	942.6	936.0	931.3	931.0	932.3	937.1	943.7	954.8	968.5	987.4	1008.9
47.5°	839.8	838.2	835.3	835.4	834.0	836.0	836.8	843.0	850.3	864.5	892.7
50°	764.9	764.9	762.9	762.8	760.9	760.8	759.2	761.7	765.0	773.9	782.9
52.5°	705.8	705.6	703.4	702.9	701.0	700.9	699.5	700.4	700.9	705.4	710.7
55°	659.5	658.2	655.3	654.4	653.6	654.7	654.3	654.3	653.7	655.5	657.2
57.5°	626.4	624.6	621.8	621.1	620.8	622.3	622.3	621.8	619.3	617.7	615.2
60°	600.2	598.4	595.4	594.6	595.1	597.0	596.9	595.3	591.6	588.3	584.6
62.5°	574.3	573.6	572.2	571.9	571.5	571.9	570.5	568.8	565.2	561.7	557.7
65°	539.8	540.2	539.0	539.2	537.8	537.6	535.6	534.0	530.3	527.1	523.0
67.5°	503.8	504.1	503.2	503.2	502.6	502.7	501.4	499.8	496.8	494.1	491.0
70°	474.3	475.0	474.5	474.6	473.7	473.5	471.6	470.0	466.9	464.7	461.8
72.5°	438.8	440.4	440.3	440.7	439.5	438.8	436.5	434.7	431.8	430.1	427.7
75°	400.5	402.6	403.2	404.1	402.3	401.3	398.9	397.3	395.0	394.0	392.4
77.5°	363.2	365.4	367.6	369.7	366.7	364.2	361.0	358.6	355.2	353.9	351.5
80°	321.2	325.3	330.1	334.2	328.9	323.6	318.4	314.6	310.1	308.2	305.3
82.5°	266.6	270.6	273.4	276.1	272.4	268.5	263.5	260.1	255.2	253.4	250.0
85°	202.5	207.6	209.3	210.6	208.3	206.3	201.6	195.2	192.1	187.3	184.8
87.5°	133.1	136.2	136.9	137.3	135.9	134.9	131.9	128.9	123.6	119.8	115.1
90°	70.5	71.3	68.9	68.4	67.7	69.1	67.2	67.3	64.1	63.7	60.9
92.5°	28.4	26.5	24.7	22.9	24.9	26.6	28.5	30.1	32.0	33.6	35.5
95°	39.2	37.1	35.1	33.0	34.6	36.3	37.9	39.5	41.1	42.8	44.4
97.5°	54.4	53.0	51.7	50.3	51.3	52.2	53.2	54.1	55.1	56.0	57.0
100°	69.7	68.6	67.5	66.4	66.4	66.4	66.4	66.4	66.4	66.4	66.4
102.5°	113.7	109.0	104.4	99.8	103.0	106.0	109.2	112.3	115.5	118.5	121.8
105°	217.6	204.9	192.3	179.6	191.9	204.1	216.4	228.7	240.9	253.2	265.6
107.5°	398.0	378.0	358.0	338.0	360.3	382.6	404.9	427.2	449.5	471.8	494.3
110°	596.4	577.3	558.2	539.2	562.8	586.6	610.2	633.9	657.6	681.3	705.1



TEST NUMBER: P1444725
 CATALOG NUMBER: EHBR1-18-UNV-TA-L935-UPL24

CANDELA DISTRIBUTION (continued):

	82.5°	85°	87.5°	90°	92.5°	95°	97.5°	100°	102.5°	105°	107.5°
112.5°	729.0	719.7	710.5	701.2	716.5	731.7	747.0	762.3	777.5	792.9	808.2
115°	763.4	762.9	762.3	761.8	769.0	776.2	783.4	790.7	797.9	805.1	812.5
117.5°	721.2	726.2	731.4	736.6	738.9	741.2	743.6	745.9	748.4	750.6	753.2
120°	645.5	652.4	659.3	666.2	665.2	664.3	663.3	662.4	661.6	660.8	660.0
122.5°	556.9	563.8	570.7	577.7	575.7	573.6	571.6	569.6	567.8	565.8	564.0
125°	474.6	480.3	486.1	491.9	489.8	487.8	485.8	483.9	481.9	480.1	478.3
127.5°	409.0	412.7	416.1	419.7	418.7	417.8	417.0	416.2	415.3	414.6	413.9
130°	363.9	365.5	367.2	368.9	369.1	369.4	369.8	370.1	370.7	371.1	371.7
132.5°	336.8	337.1	337.5	337.9	339.0	340.1	341.3	342.5	343.9	345.1	346.6
135°	320.5	320.2	319.8	319.7	321.3	322.8	324.6	326.3	328.2	330.1	332.1
137.5°	312.0	311.3	310.8	310.2	311.9	313.5	315.2	316.9	318.8	320.7	322.7
140°	307.4	306.9	306.5	306.0	307.6	309.2	311.0	312.7	314.6	316.4	318.4
142.5°	303.3	302.7	302.4	302.0	303.3	304.9	306.4	308.1	309.7	311.4	313.2
145°	302.5	302.1	301.9	301.5	302.6	303.7	304.8	306.0	307.2	308.4	309.9
147.5°	299.2	298.9	298.8	298.6	299.5	300.3	301.1	301.9	303.0	303.9	305.0
150°	294.7	294.6	294.6	294.6	295.0	295.5	296.1	296.6	297.3	297.8	298.6
152.5°	287.9	287.7	287.8	287.7	288.1	288.7	289.2	289.7	290.3	290.8	291.5
155°	282.4	282.2	282.1	282.0	282.1	282.3	282.6	282.7	283.0	283.2	283.6
157.5°	278.9	278.7	278.5	278.3	278.4	278.3	278.5	278.4	278.6	278.6	278.8
160°	275.5	275.1	274.9	274.5	274.7	274.7	275.0	275.0	275.3	275.4	275.6
162.5°	274.8	274.6	274.4	274.3	274.2	273.9	273.8	273.6	273.5	273.4	273.3
165°	273.7	273.4	273.1	272.7	272.7	272.7	272.7	272.7	272.7	272.7	272.7
167.5°	274.9	274.4	274.3	273.8	273.6	273.3	273.1	272.7	272.5	272.3	272.2
170°	274.5	274.2	274.0	273.6	273.5	273.3	273.3	273.2	273.1	273.0	273.0
172.5°	276.5	276.2	276.0	275.7	275.6	275.4	275.4	275.3	275.3	275.3	275.2
175°	277.6	277.5	277.4	277.3	277.2	277.0	276.9	276.7	276.6	276.3	276.2
177.5°	277.9	277.8	277.6	277.5	277.4	277.4	277.4	277.4	277.4	277.3	277.3
180°	277.5	277.5	277.5	277.5	277.5	277.5	277.5	277.5	277.5	277.5	277.5



TEST NUMBER: P1444725
 CATALOG NUMBER: EHBR1-18-UNV-TA-L935-UPL24

CANDELA DISTRIBUTION (continued):

	110°	112.5°	115°	117.5°	120°	122.5°	125°	127.5°	130°	132.5°	135°
0°	14339.1	14339.1	14339.1	14339.1	14339.1	14339.1	14339.1	14339.1	14339.1	14339.1	14339.1
2.5°	14347.1	14343.3	14333.3	14328.5	14319.3	14314.7	14307.5	14302.9	14297.1	14292.8	14290.5
5°	14744.6	14726.2	14689.5	14666.9	14627.2	14601.0	14561.5	14532.6	14491.9	14461.9	14423.4
7.5°	15261.8	15233.6	15186.5	15150.8	15095.3	15052.8	14990.5	14940.7	14871.8	14814.6	14744.3
10°	15472.3	15455.9	15434.8	15411.8	15381.0	15350.9	15308.3	15264.9	15207.1	15149.6	15074.4
12.5°	15161.1	15176.6	15207.1	15221.3	15244.6	15252.6	15263.2	15258.2	15248.8	15225.3	15191.3
15°	14279.8	14344.3	14446.3	14516.9	14615.8	14685.3	14777.2	14836.3	14904.4	14945.2	14983.8
17.5°	12829.9	12954.8	13134.9	13278.4	13471.3	13628.1	13820.3	13971.2	14145.4	14279.1	14421.4
20°	10972.9	11147.8	11396.4	11607.4	11886.9	12123.8	12427.3	12681.6	12978.3	13225.5	13492.4
22.5°	8974.3	9179.9	9464.8	9719.4	10053.0	10351.1	10731.4	11067.6	11468.7	11827.9	12225.3
25°	7088.8	7290.3	7580.4	7844.1	8204.4	8532.6	8948.2	9333.8	9799.2	10233.2	10731.4
27.5°	5471.9	5651.0	5905.9	6143.3	6473.2	6795.5	7217.1	7628.5	8125.1	8591.4	9128.3
30°	4225.8	4371.0	4575.4	4766.3	5031.2	5294.8	5670.4	6050.7	6544.9	7028.1	7578.6
32.5°	3274.8	3398.7	3569.3	3724.3	3928.4	4127.2	4403.8	4707.7	5141.2	5604.0	6136.3
35°	2535.1	2641.0	2786.2	2919.7	3087.6	3245.4	3451.8	3668.7	3999.5	4388.9	4865.2
37.5°	2021.1	2064.3	2167.9	2277.3	2416.7	2546.4	2707.8	2868.3	3104.9	3412.1	3801.2
40°	1537.0	1605.7	1690.0	1776.1	1881.6	1985.7	2162.8	2248.1	2403.9	2624.5	2926.4
42.5°	1240.2	1288.4	1347.8	1407.7	1481.2	1553.7	1643.3	1734.5	1851.0	2000.4	2215.2
45°	1037.8	1069.3	1107.5	1147.4	1195.7	1245.2	1305.2	1367.8	1446.8	1538.6	1669.1
47.5°	902.6	920.0	944.9	972.2	1005.4	1039.6	1078.6	1118.5	1167.5	1222.0	1296.3
50°	797.1	811.6	831.0	849.2	872.1	907.1	922.6	944.7	974.1	1006.2	1047.7
52.5°	720.7	730.4	742.6	753.1	767.5	780.6	797.8	813.1	833.5	852.7	879.5
55°	661.3	664.8	671.7	678.4	688.4	697.4	709.2	719.1	732.1	743.6	760.6
57.5°	615.3	615.7	618.8	622.4	628.8	634.4	642.6	649.1	658.1	665.4	675.6
60°	582.3	580.6	581.2	582.4	586.0	589.7	594.9	599.2	604.9	609.1	614.7
62.5°	554.9	552.1	551.5	551.1	553.0	554.3	557.1	559.2	562.4	564.2	567.3
65°	520.1	516.9	515.6	514.2	514.7	514.3	515.3	515.3	517.1	517.4	519.1
67.5°	488.7	486.0	484.3	482.3	481.4	480.0	479.4	478.0	477.7	476.5	476.3
70°	460.0	457.3	456.0	454.1	453.2	451.3	450.1	447.7	446.4	444.2	442.9
72.5°	426.8	425.3	424.9	423.6	423.3	422.3	421.7	420.1	419.2	417.3	416.2
75°	392.1	390.9	390.7	389.4	389.4	388.1	387.8	386.0	385.1	383.3	382.5
77.5°	350.7	348.9	348.4	346.9	347.3	346.7	347.2	345.9	345.3	343.4	342.9
80°	304.2	301.8	300.9	298.9	299.5	298.5	299.5	299.4	300.1	298.5	298.3
82.5°	249.1	246.4	246.0	244.6	245.5	245.6	247.6	246.5	247.0	245.6	246.2
85°	181.2	179.3	176.6	176.3	174.6	176.4	174.0	175.6	173.1	174.8	172.5
87.5°	112.4	108.4	106.3	103.5	102.4	99.8	98.6	96.7	97.2	96.3	96.9
90°	61.3	58.9	60.0	59.1	60.7	60.2	62.4	62.5	64.9	65.1	67.6
92.5°	37.2	38.9	42.1	45.5	48.7	51.9	55.2	58.6	61.8	65.2	68.3
95°	46.0	47.7	52.0	56.4	60.7	65.1	69.5	73.9	78.2	82.6	86.9
97.5°	57.9	58.9	63.3	67.6	72.0	76.3	80.7	85.1	89.5	93.8	98.2
100°	66.4	66.5	78.9	91.3	103.7	116.2	128.5	140.9	153.4	165.8	178.2
102.5°	124.9	128.1	159.3	190.8	222.1	253.3	284.7	316.0	347.3	378.8	410.1
105°	277.8	290.1	337.9	385.6	433.4	481.3	529.1	577.0	624.8	672.7	720.4
107.5°	516.6	539.0	582.2	625.4	668.5	711.7	755.2	798.3	841.5	884.8	928.1
110°	728.9	752.5	781.4	810.4	839.4	868.3	897.3	926.2	955.2	984.2	1013.2



TEST NUMBER: P1444725
 CATALOG NUMBER: EHBR1-18-UNV-TA-L935-UPL24

CANDELA DISTRIBUTION (continued):

	110°	112.5°	115°	117.5°	120°	122.5°	125°	127.5°	130°	132.5°	135°
112.5°	823.4	838.7	855.6	872.5	889.3	906.2	923.1	940.0	956.9	973.9	990.8
115°	819.8	827.1	833.6	840.2	846.7	853.2	859.8	866.5	873.2	879.7	886.4
117.5°	755.4	758.0	759.0	760.0	761.0	762.0	763.1	764.2	765.4	766.5	767.6
120°	659.2	658.4	657.2	656.1	655.0	653.9	652.9	651.8	650.8	649.8	648.8
122.5°	562.0	560.3	559.2	558.1	557.1	556.1	555.0	554.1	553.1	552.2	551.2
125°	476.5	474.6	475.6	476.5	477.4	478.4	479.3	480.4	481.4	482.3	483.3
127.5°	413.2	412.6	415.0	417.5	420.0	422.4	425.0	427.5	430.1	432.6	435.1
130°	372.3	373.0	376.0	379.3	382.4	385.6	388.9	392.3	395.3	398.6	401.8
132.5°	347.9	349.6	352.6	355.6	358.7	361.8	364.9	368.0	371.1	374.3	377.3
135°	334.1	336.2	338.9	341.7	344.5	347.4	350.2	353.1	355.8	358.7	361.5
137.5°	324.6	326.7	329.0	331.2	333.4	335.7	338.1	340.3	342.5	344.8	347.0
140°	320.3	322.4	323.6	324.9	326.2	327.5	328.6	330.0	331.2	332.5	333.7
142.5°	314.9	316.9	317.6	318.4	319.2	320.1	320.9	321.7	322.5	323.2	324.0
145°	311.1	312.6	312.6	312.7	312.8	312.9	312.9	313.0	312.9	313.0	313.0
147.5°	306.0	307.1	306.8	306.7	306.5	306.4	306.2	306.1	305.8	305.7	305.4
150°	299.3	300.0	299.5	299.3	298.8	298.5	298.1	297.7	297.3	297.0	296.6
152.5°	292.1	292.7	292.2	291.9	291.4	290.9	290.5	290.1	289.6	289.1	288.8
155°	283.8	284.1	283.9	283.7	283.4	283.1	282.9	282.8	282.6	282.3	282.1
157.5°	278.8	278.9	278.7	278.6	278.4	278.3	278.2	278.2	278.1	278.1	278.1
160°	275.7	276.0	275.8	275.6	275.5	275.3	275.3	275.2	275.2	275.2	275.2
162.5°	273.2	273.2	273.0	272.8	272.7	272.6	272.5	272.5	272.5	272.4	272.5
165°	272.9	273.0	272.6	272.4	272.2	271.9	271.7	271.5	271.4	271.4	271.2
167.5°	271.9	271.8	271.8	271.9	271.9	272.0	272.0	272.3	272.3	272.4	272.5
170°	273.0	273.0	272.9	272.7	272.6	272.5	272.5	272.4	272.4	272.3	272.3
172.5°	275.2	275.2	274.9	274.6	274.3	274.2	273.9	273.7	273.4	273.3	273.0
175°	276.1	276.0	275.8	275.7	275.5	275.3	275.2	275.0	274.8	274.7	274.5
177.5°	277.2	277.2	277.1	277.1	277.1	277.0	277.0	277.0	277.0	277.0	276.9
180°	277.5	277.5	277.5	277.5	277.5	277.5	277.5	277.5	277.5	277.5	277.5



TEST NUMBER: P1444725
 CATALOG NUMBER: EHBR1-18-UNV-TA-L935-UPL24

CANDELA DISTRIBUTION (continued):

	137.5°	140°	142.5°	145°	147.5°	150°	152.5°	155°	157.5°	160°	162.5°
0°	14339.1	14339.1	14339.1	14339.1	14339.1	14339.1	14339.1	14339.1	14339.1	14339.1	14339.1
2.5°	14287.6	14287.5	14286.1	14286.7	14287.0	14288.0	14289.3	14290.5	14290.8	14291.8	14292.0
5°	14394.6	14359.2	14333.1	14304.3	14282.7	14263.3	14250.3	14240.0	14236.0	14237.0	14239.4
7.5°	14684.5	14611.6	14551.4	14482.9	14425.9	14365.4	14315.3	14267.7	14233.0	14207.1	14192.7
10°	15002.7	14913.8	14828.8	14729.8	14635.8	14535.5	14444.7	14353.3	14276.9	14210.8	14162.1
12.5°	15143.9	15081.0	15007.6	14914.1	14813.6	14697.8	14581.0	14455.8	14339.3	14231.1	14143.9
15°	14994.4	14994.5	14967.8	14922.9	14853.0	14760.6	14649.3	14518.7	14381.3	14241.0	14112.9
17.5°	14519.8	14609.4	14659.1	14690.7	14681.0	14647.0	14576.1	14475.8	14347.7	14198.4	14042.0
20°	13704.9	13916.0	14066.7	14202.1	14277.9	14328.3	14323.4	14282.5	14191.3	14064.2	13901.5
22.5°	12563.3	12917.7	13197.4	13458.3	13641.2	13790.0	13860.7	13890.8	13849.4	13760.9	13608.0
25°	11176.7	11658.7	12069.9	12469.1	12768.5	13025.8	13180.5	13289.4	13298.0	13251.8	13115.4
27.5°	9635.9	10204.8	10725.3	11255.8	11676.9	12046.8	12289.5	12467.2	12523.6	12516.1	12392.2
30°	8097.1	8694.3	9268.1	9886.7	10407.7	10880.3	11201.0	11441.2	11533.8	11551.5	11432.3
32.5°	6643.9	7232.8	7805.0	8451.7	9025.0	9566.7	9945.5	10230.8	10338.5	10363.9	10233.2
35°	5325.0	5868.3	6412.1	7038.8	7608.9	8169.7	8568.9	8867.7	8968.2	8985.2	8833.9
37.5°	4181.3	4644.2	5118.0	5680.3	6203.9	6730.6	7109.9	7390.7	7463.9	7459.4	7288.2
40°	3218.3	3578.2	3958.8	4421.8	4857.1	5302.4	5622.6	5854.7	5893.2	5864.7	5684.9
42.5°	2420.0	2679.8	2955.9	3301.5	3624.4	3957.7	4190.7	4363.0	4368.5	4323.5	4162.0
45°	1802.9	2056.5	2172.2	2381.2	2589.2	2810.8	2953.0	3059.5	3043.0	3003.4	2880.7
47.5°	1374.4	1471.9	1575.2	1704.8	1825.9	2077.4	2058.7	2229.8	2106.6	2190.5	2005.7
50°	1091.4	1145.9	1201.5	1270.3	1333.6	1399.4	1440.4	1471.1	1467.1	1453.9	1418.5
52.5°	928.5	945.4	972.8	1011.9	1047.3	1082.8	1106.2	1125.2	1125.6	1120.2	1102.4
55°	776.0	797.4	817.1	842.7	886.2	892.9	926.4	919.7	922.3	912.9	922.5
57.5°	684.2	696.6	707.8	723.0	735.6	750.3	758.9	767.2	766.4	764.6	755.5
60°	619.2	626.0	632.2	641.0	647.9	656.3	660.3	664.5	663.1	660.0	651.9
62.5°	569.0	573.3	576.8	582.6	586.8	591.9	594.0	595.8	594.0	591.0	583.9
65°	519.5	522.3	524.5	528.8	531.8	536.2	538.0	539.6	538.0	535.7	530.3
67.5°	474.9	475.2	474.9	476.7	477.6	480.3	481.1	482.3	480.4	478.4	473.7
70°	441.0	440.3	439.5	440.2	440.3	441.7	441.8	441.7	439.3	435.9	430.9
72.5°	414.6	414.2	413.6	414.1	414.1	415.3	414.9	414.4	411.6	408.2	403.2
75°	380.6	380.3	379.0	379.0	378.0	378.4	377.0	376.2	373.0	370.3	365.8
77.5°	340.8	340.1	338.2	337.5	335.5	334.7	332.1	330.8	327.6	325.4	321.6
80°	296.3	295.6	293.2	291.9	288.8	286.7	282.9	280.7	277.1	274.9	271.2
82.5°	244.9	245.2	242.8	241.2	236.6	233.1	227.9	225.2	221.1	219.1	215.3
85°	174.2	171.7	173.0	172.9	170.0	167.0	162.9	160.0	156.5	154.5	151.8
87.5°	95.5	96.2	95.4	94.9	92.8	91.3	88.1	86.4	83.8	82.7	80.6
90°	63.1	61.0	56.6	54.6	50.2	47.3	42.6	40.1	35.6	34.5	31.9
92.5°	64.6	61.0	57.4	53.7	50.0	46.4	42.7	39.1	35.3	34.0	32.9
95°	81.6	76.4	71.1	65.7	60.5	55.1	49.8	44.6	39.2	38.2	37.1
97.5°	92.0	85.7	79.5	73.2	67.0	60.7	54.6	48.3	42.1	41.3	40.7
100°	163.8	149.5	135.0	120.5	106.2	91.8	77.3	62.9	48.6	47.8	46.9
102.5°	375.1	340.1	305.3	270.3	235.5	200.5	165.6	130.6	95.7	90.6	85.6
105°	667.6	614.7	561.8	509.0	456.1	403.2	350.3	297.4	244.5	227.5	210.5
107.5°	878.3	828.6	778.9	729.1	679.5	629.8	580.0	530.3	480.4	450.6	420.7
110°	973.7	934.2	894.8	855.3	815.9	776.4	736.8	697.3	657.9	632.1	606.3



TEST NUMBER: P1444725
 CATALOG NUMBER: EHBR1-18-UNV-TA-L935-UPL24

CANDELA DISTRIBUTION (continued):

	137.5°	140°	142.5°	145°	147.5°	150°	152.5°	155°	157.5°	160°	162.5°
112.5°	961.9	932.9	904.1	875.0	846.1	817.1	788.1	759.1	730.1	714.5	698.8
115°	869.0	851.6	834.0	816.6	799.1	781.6	764.1	746.5	729.1	720.8	712.5
117.5°	758.7	749.7	740.7	731.8	722.7	713.6	704.7	695.7	686.6	683.6	680.7
120°	646.1	643.4	640.5	637.7	634.9	632.1	629.2	626.4	623.4	623.6	623.9
122.5°	552.2	553.1	554.0	554.9	555.9	556.7	557.7	558.4	559.3	561.4	563.5
125°	485.9	488.2	490.8	493.1	495.6	497.9	500.5	502.7	505.2	507.2	509.4
127.5°	438.0	440.7	443.5	446.1	448.9	451.5	454.3	457.0	459.7	461.5	463.6
130°	404.2	406.5	408.9	411.2	413.6	415.9	418.3	420.6	422.9	424.4	425.8
132.5°	379.5	381.6	383.6	385.6	387.8	389.8	392.0	394.0	396.2	397.2	398.2
135°	363.1	364.5	366.2	367.6	369.2	370.7	372.2	373.8	375.4	376.0	376.7
137.5°	348.3	349.5	350.7	351.9	353.2	354.4	355.7	357.0	358.4	358.5	358.9
140°	335.1	336.3	337.7	339.1	340.4	341.7	343.2	344.6	346.1	346.3	346.7
142.5°	325.0	326.0	327.0	328.0	329.1	330.2	331.3	332.4	333.5	333.8	334.1
145°	314.2	315.4	316.8	317.9	319.2	320.5	321.9	323.3	324.7	324.8	325.0
147.5°	306.5	307.5	308.7	309.8	310.9	312.0	313.2	314.4	315.8	315.9	315.9
150°	297.8	298.9	300.1	301.2	302.5	303.7	305.1	306.4	307.9	308.2	308.5
152.5°	290.0	291.3	292.6	293.9	295.3	296.6	298.2	299.6	301.1	301.4	301.7
155°	283.5	284.7	286.0	287.4	288.8	290.1	291.6	292.9	294.4	294.8	295.2
157.5°	279.2	280.2	281.5	282.7	284.0	285.1	286.5	287.7	289.0	289.4	289.7
160°	276.2	277.2	278.3	279.3	280.4	281.5	282.7	283.8	284.9	285.2	285.5
162.5°	273.5	274.6	275.7	276.6	277.8	278.9	280.0	281.1	282.1	282.4	282.8
165°	272.0	272.7	273.5	274.3	275.1	275.8	276.6	277.3	278.2	278.6	279.0
167.5°	273.2	273.7	274.3	274.9	275.5	276.1	276.7	277.3	278.0	278.3	278.7
170°	272.8	273.3	273.8	274.4	275.0	275.5	276.1	276.6	277.2	277.6	277.9
172.5°	273.3	273.6	274.1	274.3	274.7	275.1	275.5	275.9	276.2	276.7	277.1
175°	274.8	274.9	275.2	275.3	275.4	275.6	275.9	276.1	276.3	276.6	277.0
177.5°	277.0	277.2	277.2	277.4	277.6	277.8	277.9	278.1	278.2	278.7	279.1
180°	277.5	277.5	277.5	277.5	277.5	277.5	277.5	277.5	277.5	277.5	277.5



TEST NUMBER: P1444725
 CATALOG NUMBER: EHBR1-18-UNV-TA-L935-UPL24

CANDELA DISTRIBUTION (continued):

	165°	167.5°	170°	172.5°	175°	177.5°	180°	182.5°	185°	187.5°	190°
0°	14339.1	14339.1	14339.1	14339.1	14339.1	14339.1	14339.1	14339.1	14339.1	14339.1	14339.1
2.5°	14291.5	14291.4	14290.9	14290.3	14289.6	14290.0	14290.6	14292.3	14295.2	14299.3	14304.7
5°	14241.4	14244.3	14246.0	14246.1	14244.7	14243.8	14245.1	14249.1	14257.0	14270.2	14288.3
7.5°	14188.8	14192.4	14197.9	14202.1	14202.8	14201.8	14202.1	14208.2	14222.8	14248.7	14285.0
10°	14132.6	14121.9	14127.6	14137.8	14146.1	14147.5	14148.5	14155.8	14177.2	14216.3	14274.6
12.5°	14080.7	14046.9	14040.4	14049.7	14062.1	14066.1	14065.0	14068.1	14093.1	14144.9	14226.2
15°	14012.5	13948.9	13927.1	13929.6	13944.9	13950.4	13946.4	13940.2	13964.6	14027.8	14132.9
17.5°	13902.1	13799.5	13759.5	13757.8	13775.7	13780.6	13770.7	13751.6	13775.6	13854.4	13984.9
20°	13734.1	13582.8	13507.6	13495.6	13515.1	13509.4	13489.7	13460.8	13492.3	13588.2	13743.5
22.5°	13432.3	13240.6	13112.0	13070.5	13093.8	13078.3	13049.5	13012.6	13054.6	13163.5	13336.5
25°	12939.2	12717.5	12541.6	12442.8	12461.4	12433.5	12402.2	12357.4	12407.5	12532.5	12722.9
27.5°	12214.3	11958.3	11740.2	11576.7	11582.8	11546.2	11510.2	11452.2	11514.6	11662.6	11877.4
30°	11250.4	10954.2	10688.6	10466.5	10446.5	10411.1	10374.2	10298.2	10376.3	10553.5	10804.3
32.5°	10040.0	9711.0	9404.2	9123.3	9070.3	9035.6	9002.7	8915.3	9017.6	9224.2	9512.5
35°	8624.4	8274.0	7941.3	7620.4	7532.7	7498.1	7469.3	7385.5	7513.1	7738.0	8049.3
37.5°	7070.5	6712.5	6382.2	6053.3	5929.2	5882.3	5861.4	5806.5	5953.8	6176.1	6488.7
40°	5475.3	5142.5	4846.3	4555.8	4414.4	4342.6	4331.6	4321.6	4464.0	4656.9	4940.7
42.5°	3983.1	3714.6	3486.2	3264.1	3136.0	3037.9	3037.9	3067.7	3195.8	3340.4	3559.2
45°	2755.2	2575.1	2429.5	2281.1	2320.8	2125.3	2240.2	2181.3	2244.6	2337.8	2480.0
47.5°	1894.0	1795.6	1715.7	1632.8	1572.3	1514.7	1519.6	1556.9	1616.5	1671.8	1745.9
50°	1380.3	1330.3	1289.5	1246.5	1216.5	1191.0	1192.5	1208.6	1239.9	1269.0	1307.7
52.5°	1081.6	1054.0	1031.9	1008.0	992.2	979.7	980.3	988.2	1005.1	1021.7	1043.9
55°	891.6	888.2	859.4	838.1	829.9	821.4	822.9	826.0	837.5	847.3	862.0
57.5°	747.1	734.1	725.5	714.3	709.1	703.2	704.5	705.7	713.4	719.9	730.5
60°	645.1	636.0	629.8	622.2	618.8	615.0	615.9	616.6	621.5	625.7	633.3
62.5°	577.3	569.2	563.8	557.9	555.6	553.0	553.6	553.8	556.8	560.0	565.7
65°	525.4	518.9	514.4	509.4	506.9	504.2	504.5	504.5	507.1	509.4	513.7
67.5°	470.4	465.5	462.7	458.6	456.9	454.3	454.2	453.3	455.0	455.9	458.9
70°	426.3	421.4	417.7	413.8	411.7	409.3	409.4	409.4	411.4	413.5	417.2
72.5°	399.1	394.3	391.1	387.6	385.6	383.6	383.3	383.0	384.5	385.6	388.1
75°	363.0	359.2	357.3	354.1	352.5	350.2	349.8	348.8	349.5	349.7	351.6
77.5°	319.2	315.6	314.0	310.9	309.5	306.9	306.7	305.5	306.1	305.7	307.2
80°	269.3	266.0	265.2	262.6	261.9	259.5	259.1	257.7	258.1	257.0	257.5
82.5°	213.6	210.6	210.0	207.5	207.5	205.4	205.2	203.0	203.0	201.2	198.2
85°	150.5	148.3	147.4	145.4	144.7	143.0	142.1	140.0	139.3	137.9	137.5
87.5°	79.4	78.0	76.8	75.9	74.0	71.0	70.7	68.5	68.7	67.2	67.2
90°	31.0	28.5	27.7	25.5	24.5	22.7	21.8	22.4	23.3	23.8	24.8
92.5°	31.6	30.5	29.2	28.0	26.7	25.6	24.3	25.6	26.7	28.0	29.2
95°	36.0	34.9	33.8	32.7	31.6	30.5	29.5	30.5	31.6	32.7	33.8
97.5°	40.0	39.3	38.6	38.0	37.3	36.6	35.9	36.7	37.3	38.1	38.7
100°	46.1	45.3	44.5	43.7	42.9	42.1	41.2	42.1	43.0	43.8	44.6
102.5°	80.6	75.6	70.5	65.5	60.5	55.5	50.4	55.5	60.5	65.6	70.6
105°	193.5	176.6	159.6	142.6	125.5	108.6	91.5	108.6	125.5	142.6	159.7
107.5°	390.8	361.0	331.0	301.1	271.2	241.2	211.3	241.3	271.3	301.2	331.1
110°	580.5	554.8	528.8	503.1	477.3	451.4	425.5	451.4	477.4	503.2	529.0



TEST NUMBER: P1444725
 CATALOG NUMBER: EHBR1-18-UNV-TA-L935-UPL24

CANDELA DISTRIBUTION (continued):

	165°	167.5°	170°	172.5°	175°	177.5°	180°	182.5°	185°	187.5°	190°
112.5°	683.0	667.3	651.7	636.0	620.1	604.4	588.7	604.5	620.3	636.2	651.9
115°	704.2	695.9	687.5	679.2	670.9	662.5	654.1	662.7	671.1	679.6	688.0
117.5°	677.8	674.9	671.9	669.0	665.9	663.0	659.8	663.1	666.2	669.4	672.4
120°	624.1	624.4	624.6	624.8	625.0	625.2	625.3	625.4	625.4	625.4	625.3
122.5°	565.5	567.5	569.5	571.5	573.6	575.5	577.4	575.7	574.0	572.3	570.4
125°	511.4	513.6	515.6	517.8	519.7	521.9	523.6	522.1	520.3	518.6	516.6
127.5°	465.4	467.3	469.1	471.0	472.7	474.5	476.1	474.8	473.3	471.8	470.2
130°	427.2	428.6	429.9	431.2	432.5	433.7	434.9	434.0	433.0	432.2	431.1
132.5°	399.1	400.2	401.2	402.2	403.0	404.0	404.6	404.2	403.7	403.2	402.5
135°	377.3	378.0	378.5	379.2	379.7	380.1	380.4	380.5	380.3	380.2	379.8
137.5°	359.1	359.5	359.6	359.7	359.8	359.9	359.8	360.3	360.5	360.9	361.0
140°	346.9	347.1	347.3	347.4	347.6	347.7	347.6	348.0	348.3	348.6	348.7
142.5°	334.3	334.6	334.8	335.0	335.1	335.2	335.1	335.5	335.8	336.1	336.2
145°	325.0	325.2	325.2	325.3	325.2	325.1	324.8	325.5	325.8	326.3	326.6
147.5°	316.0	316.0	316.1	316.0	316.0	315.9	315.8	316.2	316.7	317.0	317.5
150°	308.8	309.1	309.3	309.6	309.7	309.9	309.9	310.2	310.4	310.6	310.7
152.5°	302.0	302.2	302.4	302.6	302.8	302.8	302.9	303.2	303.5	303.7	303.9
155°	295.6	295.9	296.2	296.6	296.7	297.0	297.2	297.5	297.5	297.7	297.8
157.5°	290.0	290.4	290.7	290.9	291.1	291.5	291.7	291.9	292.1	292.3	292.5
160°	285.8	286.1	286.4	286.7	286.9	287.2	287.4	287.7	287.9	288.0	288.3
162.5°	283.0	283.3	283.5	283.8	284.0	284.3	284.6	284.9	285.0	285.2	285.4
165°	279.4	279.8	280.1	280.5	281.0	281.3	281.7	281.8	281.9	281.9	282.0
167.5°	279.1	279.4	279.8	280.1	280.4	280.8	281.2	281.2	281.3	281.3	281.3
170°	278.2	278.6	279.0	279.2	279.6	279.9	280.1	280.1	280.2	280.2	280.3
172.5°	277.4	278.0	278.3	278.8	279.1	279.6	280.0	280.0	279.8	279.6	279.4
175°	277.2	277.7	278.1	278.4	278.8	279.1	279.5	279.2	279.1	279.0	278.8
177.5°	279.6	280.1	280.6	281.0	281.4	281.8	282.3	281.9	281.6	281.1	280.8
180°	277.5	277.5	277.5	277.5	277.5	277.5	277.5	277.5	277.5	277.5	277.5



TEST NUMBER: P1444725
 CATALOG NUMBER: EHBR1-18-UNV-TA-L935-UPL24

CANDELA DISTRIBUTION (continued):

	192.5°	195°	197.5°	200°	202.5°	205°	207.5°	210°	212.5°	215°	217.5°
0°	14339.1	14339.1	14339.1	14339.1	14339.1	14339.1	14339.1	14339.1	14339.1	14339.1	14339.1
2.5°	14312.4	14319.5	14330.5	14340.4	14355.3	14367.1	14384.9	14398.3	14418.2	14431.3	14453.0
5°	14313.7	14341.7	14378.5	14414.4	14457.6	14496.8	14545.6	14587.1	14636.0	14676.0	14726.1
7.5°	14333.9	14387.9	14452.6	14517.9	14591.6	14660.6	14738.3	14808.7	14885.5	14950.7	15021.8
10°	14348.8	14432.1	14527.5	14623.4	14724.5	14818.4	14913.1	14995.0	15071.5	15134.5	15190.2
12.5°	14328.6	14443.4	14565.7	14683.9	14796.3	14893.3	14974.9	15037.9	15081.3	15110.9	15117.8
15°	14259.7	14397.9	14530.9	14648.6	14741.8	14813.8	14850.9	14868.3	14849.7	14818.6	14750.4
17.5°	14131.2	14276.9	14395.8	14488.7	14537.9	14557.5	14526.6	14473.0	14368.2	14251.8	14083.9
20°	13895.6	14031.2	14117.5	14168.2	14155.0	14106.2	13989.8	13848.3	13639.2	13416.2	13121.9
22.5°	13482.1	13600.7	13646.7	13650.5	13570.1	13448.0	13238.1	12995.5	12665.4	12322.3	11900.3
25°	12861.6	12965.5	12972.7	12932.0	12784.8	12587.0	12278.9	11935.5	11487.1	11029.8	10501.0
27.5°	12020.0	12119.6	12095.2	12019.1	11814.8	11550.3	11155.6	10712.2	10159.2	9619.2	9034.2
30°	10962.1	11068.6	11040.0	10942.3	10699.4	10386.6	9922.2	9407.1	8793.2	8216.4	7623.6
32.5°	9696.1	9830.8	9811.0	9718.2	9464.6	9130.0	8626.1	8079.7	7451.6	6883.2	6306.5
35°	8257.1	8420.7	8429.1	8368.4	8133.0	7802.2	7304.7	6775.8	6174.2	5637.9	5105.2
37.5°	6706.7	6896.3	6935.3	6918.9	6723.9	6431.9	5978.5	5504.0	4971.1	4501.1	4045.5
40°	5147.9	5339.7	5406.3	5426.1	5282.2	5056.0	4683.9	4301.0	3866.5	3485.7	3123.8
42.5°	3726.2	3896.3	3960.7	4001.2	3911.3	3760.5	3489.1	3210.9	2892.6	2617.9	2354.6
45°	2587.9	2708.3	2757.2	2797.9	2749.0	2664.0	2492.6	2318.6	2108.5	1928.9	1759.0
47.5°	1809.3	1875.7	1908.0	1927.8	1908.8	1864.5	1771.1	1670.5	1551.8	1447.0	1346.1
50°	1341.1	1376.4	1393.4	1404.8	1390.9	1366.3	1315.8	1261.0	1195.8	1136.4	1078.4
52.5°	1062.8	1083.1	1093.1	1099.3	1091.3	1076.3	1046.9	1014.4	975.3	938.6	919.3
55°	895.4	894.3	917.5	906.3	917.5	892.5	887.2	851.5	819.0	796.2	771.5
57.5°	738.4	748.9	753.3	758.3	755.1	750.5	738.0	725.2	708.1	693.8	678.6
60°	639.1	647.8	652.7	657.6	657.4	655.6	648.4	640.8	630.1	621.5	612.2
62.5°	570.8	578.3	583.1	587.8	588.3	587.6	582.1	576.8	569.5	564.2	557.8
65°	517.1	522.3	525.6	529.4	529.1	528.1	523.2	518.8	512.8	509.1	504.4
67.5°	460.8	464.8	467.3	470.8	471.6	471.7	469.0	466.9	464.0	463.0	461.4
70°	420.7	425.5	429.7	434.1	436.6	437.8	436.6	435.6	433.9	433.1	431.9
72.5°	390.4	394.5	397.7	401.8	404.1	405.8	404.9	404.2	402.8	402.6	401.7
75°	352.8	355.6	357.5	360.5	361.7	363.3	362.6	363.0	362.4	363.6	363.6
77.5°	307.6	309.7	310.5	312.8	313.0	314.9	315.2	317.4	318.9	322.4	324.2
80°	256.7	258.0	258.0	260.3	261.3	264.5	265.9	269.5	271.2	274.2	274.4
82.5°	199.4	197.9	199.4	198.4	201.4	204.8	205.4	208.4	209.1	211.0	209.5
85°	136.3	136.2	135.0	135.2	134.3	134.7	134.2	134.8	134.2	134.3	132.9
87.5°	65.3	65.9	64.4	65.0	63.5	64.2	63.0	63.9	62.5	62.7	60.5
90°	25.5	26.4	27.1	28.0	29.0	31.4	33.7	36.1	38.6	41.0	43.4
92.5°	30.5	31.7	33.0	34.2	35.4	39.2	42.8	46.5	50.1	53.8	57.5
95°	34.9	36.0	37.1	38.2	39.3	44.7	49.9	55.3	60.6	65.9	71.2
97.5°	39.5	40.2	40.9	41.5	42.2	48.5	54.7	61.0	67.2	73.5	79.8
100°	45.5	46.3	47.1	47.9	48.8	63.2	77.6	92.1	106.5	120.9	135.3
102.5°	75.7	80.7	85.7	90.9	96.0	131.0	165.9	200.9	235.7	270.6	305.6
105°	176.6	193.7	210.8	227.8	244.8	297.7	350.7	403.7	456.5	509.4	562.3
107.5°	361.2	391.1	421.0	451.0	480.9	530.7	580.5	630.3	680.1	729.8	779.5
110°	555.0	580.8	606.7	632.6	658.4	698.0	737.6	777.1	816.6	856.1	895.6



TEST NUMBER: P1444725
 CATALOG NUMBER: EHBR1-18-UNV-TA-L935-UPL24

CANDELA DISTRIBUTION (continued):

	192.5°	195°	197.5°	200°	202.5°	205°	207.5°	210°	212.5°	215°	217.5°
112.5°	667.8	683.5	699.3	715.0	730.8	759.8	789.0	818.0	847.1	876.0	905.1
115°	696.5	704.8	713.2	721.5	730.0	747.5	765.0	782.7	800.2	817.7	835.3
117.5°	675.5	678.6	681.7	684.6	687.6	696.7	705.8	714.9	724.0	733.1	742.2
120°	625.3	625.1	625.0	624.8	624.6	627.5	630.5	633.4	636.4	639.3	642.1
122.5°	568.5	566.6	564.7	562.7	560.8	559.9	559.2	558.3	557.6	556.8	555.9
125°	514.8	512.8	510.9	508.8	506.8	504.5	502.2	499.8	497.5	495.1	492.8
127.5°	468.7	466.9	465.3	463.4	461.7	459.0	456.3	453.6	451.1	448.4	445.7
130°	430.1	428.9	427.7	426.3	425.2	422.8	420.6	418.3	416.0	413.7	411.5
132.5°	401.9	401.1	400.3	399.3	398.5	396.4	394.5	392.4	390.4	388.4	386.5
135°	379.7	379.2	378.9	378.4	377.9	376.4	375.0	373.5	372.0	370.6	369.1
137.5°	361.2	361.2	361.2	361.1	361.1	359.8	358.6	357.5	356.3	355.1	353.9
140°	348.9	348.9	349.0	348.9	348.9	347.6	346.3	344.9	343.8	342.4	341.1
142.5°	336.3	336.4	336.5	336.4	336.4	335.4	334.5	333.5	332.5	331.5	330.5
145°	326.9	327.1	327.4	327.4	327.7	326.4	325.3	323.9	322.9	321.6	320.5
147.5°	317.8	318.0	318.3	318.5	318.8	317.7	316.8	315.7	314.8	313.7	312.8
150°	310.9	310.9	311.0	311.0	311.0	309.9	308.9	307.7	306.8	305.5	304.6
152.5°	304.0	304.2	304.3	304.3	304.4	303.3	302.2	301.0	299.8	298.6	297.5
155°	297.9	298.0	298.0	298.0	298.0	296.9	295.8	294.7	293.7	292.5	291.4
157.5°	292.6	292.7	292.7	292.8	292.8	291.8	290.9	289.9	289.0	288.0	287.1
160°	288.4	288.6	288.7	288.7	288.8	288.0	287.3	286.4	285.7	284.8	283.9
162.5°	285.6	285.8	285.9	285.9	286.0	285.2	284.5	283.7	282.9	282.0	281.1
165°	282.0	282.0	281.9	281.9	281.8	281.2	280.8	280.2	279.7	279.1	278.5
167.5°	281.3	281.3	281.2	281.2	281.1	280.8	280.5	280.1	279.6	279.2	278.8
170°	280.2	280.2	280.1	280.1	280.1	279.7	279.2	278.9	278.6	278.1	277.6
172.5°	279.2	279.1	278.9	278.7	278.5	278.2	278.0	277.7	277.5	277.2	277.0
175°	278.6	278.3	278.2	278.0	277.7	277.6	277.5	277.4	277.3	277.2	277.1
177.5°	280.4	280.1	279.7	279.3	279.0	278.9	278.8	278.7	278.6	278.5	278.3
180°	277.5	277.5	277.5	277.5	277.5	277.5	277.5	277.5	277.5	277.5	277.5



TEST NUMBER: P1444725
 CATALOG NUMBER: EHBR1-18-UNV-TA-L935-UPL24

CANDELA DISTRIBUTION (continued):

	220°	222.5°	225°	227.5°	230°	232.5°	235°	237.5°	240°	242.5°	245°
0°	14339.1	14339.1	14339.1	14339.1	14339.1	14339.1	14339.1	14339.1	14339.1	14339.1	14339.1
2.5°	14466.5	14377.1	14365.3	14371.6	14386.5	14392.1	14408.1	14412.5	14428.8	14432.7	14448.3
5°	14764.9	14646.8	14652.7	14681.2	14724.1	14749.8	14792.0	14814.1	14854.5	14872.8	14909.2
7.5°	15079.7	14987.0	15015.9	15063.7	15122.6	15163.2	15214.0	15247.1	15290.8	15318.0	15352.9
10°	15234.2	15208.8	15240.6	15278.4	15311.9	15338.2	15359.7	15376.9	15388.1	15398.7	15403.3
12.5°	15116.7	15156.0	15161.3	15157.7	15135.5	15118.6	15080.4	15054.6	15008.6	14980.6	14925.9
15°	14680.6	14767.1	14719.2	14646.7	14540.7	14452.2	14327.3	14234.4	14104.3	14016.1	13885.6
17.5°	13915.5	14024.6	13899.9	13732.2	13518.8	13336.3	13109.0	12928.5	12702.6	12538.2	12327.3
20°	12838.3	12940.3	12717.8	12439.8	12109.7	11831.9	11504.4	11243.0	10938.6	10712.2	10438.9
22.5°	11497.2	11569.8	11256.3	10881.6	10461.0	10114.0	9722.4	9409.0	9061.7	8802.7	8511.3
25°	10013.5	10033.1	9657.0	9225.2	8756.5	8366.5	7948.4	7619.0	7264.7	7002.3	6716.4
27.5°	8515.9	8487.1	8080.7	7622.9	7129.8	6724.4	6316.7	6008.0	5697.6	5461.3	5214.9
30°	7102.4	7032.8	6610.8	6140.2	5661.6	5298.3	4959.7	4711.8	4464.9	4277.4	4079.7
32.5°	5806.2	5708.0	5297.2	4856.3	4453.1	4172.6	3921.6	3734.0	3534.7	3376.3	3210.3
35°	4658.1	4553.5	4189.6	3815.7	3510.6	3303.8	3106.5	2952.6	2783.4	2649.8	2505.6
37.5°	3672.8	3587.0	3282.2	2988.1	2757.2	2597.0	2435.4	2309.6	2169.8	2110.9	1956.9
40°	2835.4	2775.5	2537.1	2320.3	2146.9	2071.7	1907.6	1790.1	1685.5	1599.3	1515.8
42.5°	2211.6	2190.4	1958.5	1789.4	1667.3	1572.5	1481.0	1406.8	1334.5	1275.1	1219.0
45°	1623.1	1606.2	1503.2	1405.6	1322.4	1256.2	1194.4	1143.3	1096.0	1056.9	1021.3
47.5°	1263.9	1258.4	1199.2	1138.6	1086.2	1043.6	1003.6	969.7	938.3	912.1	903.6
50°	1028.0	1027.2	992.4	955.1	917.7	893.2	867.5	847.5	827.4	811.7	795.1
52.5°	873.4	869.6	846.1	823.0	800.9	784.8	768.4	755.6	742.3	732.6	722.3
55°	751.9	755.9	742.3	728.5	714.6	704.6	693.2	684.7	675.6	669.4	663.3
57.5°	667.5	672.8	665.7	657.8	649.4	642.8	634.9	629.1	622.9	619.0	615.5
60°	606.2	611.9	609.1	605.1	599.9	595.9	590.9	587.7	583.7	581.5	579.5
62.5°	554.0	561.2	560.2	558.4	555.0	552.9	550.1	548.6	546.1	545.1	544.2
65°	502.1	510.2	510.0	509.1	507.3	506.6	504.9	504.6	503.3	503.8	503.6
67.5°	461.2	468.2	469.8	470.9	470.8	471.3	471.1	471.8	471.8	472.8	473.5
70°	431.8	436.6	437.8	438.9	439.3	440.2	440.2	440.8	440.7	441.5	441.7
72.5°	402.0	408.4	409.5	410.5	410.5	411.4	410.9	410.7	409.5	409.2	408.3
75°	364.8	373.0	374.9	376.0	376.2	377.0	375.9	375.2	373.0	372.2	370.7
77.5°	326.1	334.6	335.9	336.3	335.6	335.8	333.4	331.9	329.2	328.1	326.6
80°	275.6	288.2	289.3	288.5	286.5	286.1	283.9	282.4	279.1	278.1	276.8
82.5°	209.7	224.5	226.6	227.5	225.9	226.3	224.1	223.2	220.2	219.8	217.8
85°	132.4	147.2	149.6	149.3	147.6	147.3	146.0	146.5	146.2	147.0	147.5
87.5°	60.8	75.1	78.6	77.5	77.3	76.3	74.0	74.9	76.2	77.1	77.2
90°	45.9	52.6	54.8	53.1	50.0	48.1	45.1	43.4	40.7	39.0	36.3
92.5°	61.2	64.8	68.5	65.3	62.0	58.7	55.5	52.0	48.9	45.5	42.3
95°	76.6	81.8	87.1	82.7	78.4	74.0	69.7	65.3	60.9	56.6	52.2
97.5°	86.0	92.2	98.3	94.0	89.6	85.2	80.8	76.5	72.1	67.8	63.4
100°	149.8	164.0	178.4	165.9	153.5	141.1	128.7	116.3	103.9	91.4	79.1
102.5°	340.5	375.3	410.2	378.9	347.5	316.2	284.9	253.5	222.2	190.9	159.5
105°	615.2	667.9	720.7	672.8	625.0	577.2	529.4	481.4	433.6	385.7	338.0
107.5°	829.3	878.6	928.3	885.0	841.8	798.6	755.2	712.0	668.8	625.5	582.3
110°	935.2	974.1	1013.5	984.5	955.5	926.4	897.5	868.4	839.5	810.6	781.6



TEST NUMBER: P1444725
 CATALOG NUMBER: EHBR1-18-UNV-TA-L935-UPL24

CANDELA DISTRIBUTION (continued):

	220°	222.5°	225°	227.5°	230°	232.5°	235°	237.5°	240°	242.5°	245°
112.5°	934.0	962.4	991.2	974.1	957.2	940.3	923.4	906.4	889.6	872.7	855.8
115°	852.8	869.5	886.8	880.0	873.5	866.8	860.2	853.6	847.0	840.3	833.9
117.5°	751.3	759.3	768.1	766.9	765.8	764.7	763.6	762.4	761.4	760.3	759.3
120°	645.0	646.8	649.5	650.5	651.5	652.5	653.5	654.5	655.5	656.5	657.6
122.5°	555.0	553.1	552.0	552.9	553.9	554.8	555.7	556.8	557.8	558.8	559.7
125°	490.4	486.9	484.1	483.1	482.1	481.1	480.1	479.0	478.1	477.2	476.3
127.5°	443.0	439.1	436.0	433.5	431.1	428.4	426.0	423.3	420.9	418.3	415.9
130°	409.2	405.5	402.9	399.6	396.5	393.2	390.0	386.8	383.6	380.3	377.1
132.5°	384.4	380.8	378.5	375.4	372.4	369.2	366.2	363.1	360.0	356.8	353.8
135°	367.6	364.6	362.8	359.9	357.3	354.4	351.6	348.8	346.0	343.0	340.4
137.5°	352.7	349.8	348.3	346.0	344.0	341.7	339.6	337.2	335.1	332.7	330.6
140°	339.8	336.8	335.1	333.9	332.8	331.4	330.3	329.1	327.9	326.6	325.4
142.5°	329.6	326.7	325.5	324.6	324.0	323.2	322.7	321.8	321.1	320.2	319.5
145°	319.2	316.0	314.4	314.4	314.5	314.5	314.5	314.5	314.5	314.5	314.5
147.5°	311.7	308.5	307.0	307.2	307.4	307.6	307.9	308.1	308.3	308.5	308.7
150°	303.3	299.8	298.0	298.5	298.8	299.3	299.6	300.1	300.5	300.9	301.4
152.5°	296.3	291.9	289.9	290.4	290.9	291.3	291.8	292.3	292.8	293.3	293.8
155°	290.1	285.5	283.4	283.5	283.7	284.0	284.1	284.4	284.7	284.9	285.3
157.5°	285.9	281.2	279.2	279.2	279.2	279.4	279.4	279.6	279.7	279.9	280.1
160°	283.0	278.3	276.4	276.3	276.4	276.4	276.5	276.5	276.7	276.8	277.1
162.5°	280.1	275.6	273.8	273.6	273.6	273.6	273.8	273.7	273.9	273.9	274.2
165°	277.9	274.0	272.4	272.4	272.6	272.7	272.9	273.1	273.3	273.5	273.8
167.5°	278.3	274.8	273.6	273.5	273.3	273.2	273.2	273.0	273.0	272.9	272.9
170°	277.2	274.3	273.3	273.3	273.5	273.4	273.5	273.6	273.7	273.7	273.9
172.5°	276.6	274.6	273.8	274.1	274.3	274.5	274.8	275.0	275.3	275.5	275.8
175°	276.9	275.7	275.3	275.3	275.4	275.6	275.7	275.9	276.0	276.2	276.4
177.5°	278.2	277.8	277.6	277.6	277.6	277.6	277.6	277.6	277.6	277.7	277.7
180°	277.5	277.5	277.5	277.5	277.5	277.5	277.5	277.5	277.5	277.5	277.5



TEST NUMBER: P1444725
 CATALOG NUMBER: EHBR1-18-UNV-TA-L935-UPL24

CANDELA DISTRIBUTION (continued):

	247.5°	250°	252.5°	255°	257.5°	260°	262.5°	265°	267.5°	270°	272.5°
0°	14339.1	14339.1	14339.1	14339.1	14339.1	14339.1	14339.1	14339.1	14339.1	14339.1	14339.1
2.5°	14451.2	14468.1	14466.8	14482.5	14481.8	14496.6	14493.6	14506.4	14503.4	14514.4	14508.0
5°	14925.2	14957.3	14967.9	14996.8	15002.8	15028.7	15029.2	15049.8	15047.3	15063.4	15054.9
7.5°	15373.7	15403.6	15417.8	15440.3	15451.5	15470.1	15477.4	15492.7	15496.3	15505.4	15505.1
10°	15411.5	15411.4	15418.5	15415.3	15421.6	15417.9	15425.6	15422.8	15434.2	15431.3	15439.8
12.5°	14902.3	14851.7	14833.3	14787.9	14778.0	14739.1	14741.8	14716.9	14728.9	14713.5	14739.7
15°	13807.9	13690.7	13632.8	13530.9	13498.9	13418.3	13411.8	13358.3	13372.7	13344.7	13385.7
17.5°	12190.8	12006.2	11904.9	11756.1	11697.0	11583.1	11560.1	11491.3	11502.0	11467.2	11516.7
20°	10262.6	10039.6	9911.9	9739.7	9662.9	9527.1	9491.1	9414.0	9423.6	9389.1	9445.0
22.5°	8312.5	8079.0	7934.8	7754.4	7656.4	7528.6	7490.3	7412.9	7417.3	7384.9	7438.6
25°	6520.4	6296.6	6156.6	5992.7	5907.6	5790.5	5750.2	5680.8	5684.7	5657.9	5706.2
27.5°	5044.0	4860.4	4743.3	4605.9	4529.7	4433.3	4394.1	4335.6	4335.4	4315.8	4356.2
30°	3941.6	3788.4	3683.2	3563.6	3491.9	3405.1	3367.1	3314.8	3312.5	3298.6	3330.7
32.5°	3086.2	2949.9	2853.9	2748.7	2684.4	2609.9	2573.9	2531.8	2528.0	2515.4	2541.8
35°	2399.1	2284.3	2201.8	2113.2	2119.7	2009.8	2028.0	1942.5	1919.4	1914.3	1933.9
37.5°	1854.3	1765.3	1698.4	1631.9	1587.0	1540.5	1515.5	1493.0	1490.5	1488.3	1502.0
40°	1451.4	1389.1	1340.5	1294.9	1264.0	1235.6	1219.9	1207.6	1204.6	1203.0	1211.3
42.5°	1174.7	1132.6	1101.3	1073.5	1054.7	1039.3	1030.7	1023.8	1021.5	1021.5	1026.4
45°	992.4	967.0	946.8	929.4	917.5	922.7	907.2	915.3	904.6	915.7	908.3
47.5°	874.0	852.3	839.8	827.6	820.2	814.4	814.6	814.7	817.1	817.4	819.8
50°	782.6	770.0	761.3	753.5	749.7	746.6	747.7	748.5	750.7	750.9	752.6
52.5°	714.9	706.7	701.4	696.6	694.9	693.2	693.9	693.5	694.6	694.1	695.5
55°	659.9	656.0	654.4	652.6	652.8	652.3	652.6	650.9	649.8	648.5	649.7
57.5°	614.7	614.1	615.3	616.0	618.1	618.8	619.3	617.3	615.4	613.7	614.7
60°	579.9	580.8	583.5	585.8	588.8	590.1	590.9	589.7	588.4	586.9	587.8
62.5°	545.5	546.9	550.1	552.7	556.3	558.1	560.2	560.3	560.8	560.3	560.9
65°	505.7	507.4	510.4	512.4	515.8	517.4	519.5	519.9	521.0	520.8	521.8
67.5°	475.4	476.9	479.4	481.4	484.3	486.1	487.9	488.0	488.4	488.3	489.3
70°	443.1	443.8	446.1	447.7	450.7	452.4	454.6	455.2	456.5	456.8	457.8
72.5°	408.7	408.4	409.7	410.4	412.7	414.0	416.7	418.3	420.4	421.1	421.8
75°	371.1	370.9	372.4	373.0	374.9	376.4	379.4	381.4	384.8	386.3	385.8
77.5°	327.7	328.5	331.4	333.1	335.6	337.4	341.3	344.5	350.7	353.6	350.7
80°	279.1	280.0	283.0	284.6	287.9	290.0	294.5	298.1	303.8	305.1	303.4
82.5°	219.5	219.7	222.4	223.6	227.9	231.1	236.7	239.6	243.2	242.6	242.2
85°	149.6	151.6	155.2	158.6	163.9	169.0	174.3	178.6	175.6	180.4	174.9
87.5°	79.9	79.8	84.5	83.7	91.2	95.4	100.1	102.2	104.7	104.1	104.2
90°	34.8	33.1	32.4	30.6	30.4	28.5	28.5	26.7	27.1	25.0	28.1
92.5°	39.0	37.3	35.4	33.8	31.9	30.3	28.4	26.6	24.8	23.1	24.8
95°	47.9	46.2	44.6	42.9	41.2	39.6	38.0	36.3	34.7	33.1	35.2
97.5°	59.1	58.1	57.2	56.2	55.3	54.3	53.4	52.4	51.4	50.4	51.8
100°	66.7	66.7	66.7	66.7	66.6	66.6	66.6	66.6	66.6	66.6	67.7
102.5°	128.2	125.0	121.9	118.7	115.6	112.5	109.4	106.2	103.1	100.0	104.6
105°	290.2	278.0	265.6	253.3	241.1	228.8	216.6	204.3	192.1	179.8	192.5
107.5°	539.2	516.8	494.5	472.1	449.7	427.4	405.1	382.7	360.4	338.2	358.2
110°	752.7	729.0	705.2	681.6	657.8	634.1	610.4	586.8	563.0	539.4	558.4



TEST NUMBER: P1444725
 CATALOG NUMBER: EHBR1-18-UNV-TA-L935-UPL24

CANDELA DISTRIBUTION (continued):

	247.5°	250°	252.5°	255°	257.5°	260°	262.5°	265°	267.5°	270°	272.5°
112.5°	839.0	823.6	808.3	792.9	777.6	762.4	747.2	731.9	716.6	701.4	710.7
115°	827.3	820.0	812.7	805.4	798.2	790.9	783.6	776.4	769.2	762.0	762.5
117.5°	758.2	755.8	753.3	750.9	748.5	746.2	743.8	741.5	739.1	736.8	731.7
120°	658.8	659.5	660.3	661.2	662.0	662.9	663.6	664.6	665.5	666.5	659.5
122.5°	560.7	562.6	564.4	566.2	568.2	570.1	572.0	574.0	576.1	578.1	571.1
125°	475.3	477.1	478.8	480.7	482.4	484.4	486.3	488.4	490.3	492.5	486.6
127.5°	413.4	414.1	414.6	415.4	416.1	416.9	417.7	418.7	419.6	420.6	416.9
130°	374.0	373.3	372.7	372.1	371.6	371.2	370.8	370.4	370.1	369.9	368.2
132.5°	350.7	349.2	347.8	346.4	345.0	343.8	342.5	341.4	340.2	339.2	338.7
135°	337.5	335.5	333.5	331.5	329.6	327.8	326.0	324.4	322.7	321.1	321.4
137.5°	328.3	326.4	324.3	322.4	320.5	318.8	316.9	315.2	313.6	312.0	312.5
140°	324.2	322.1	320.1	318.2	316.4	314.6	312.9	311.2	309.4	308.0	308.3
142.5°	318.7	317.0	315.1	313.4	311.6	310.1	308.4	307.0	305.3	304.1	304.4
145°	314.4	313.1	311.8	310.4	309.2	308.1	306.8	305.7	304.6	303.7	304.0
147.5°	309.0	308.0	306.9	306.0	305.0	304.1	303.2	302.4	301.5	300.9	300.9
150°	301.7	301.2	300.4	299.9	299.2	298.6	298.1	297.5	297.0	296.6	296.6
152.5°	294.3	293.7	293.1	292.6	291.9	291.5	290.9	290.5	290.0	289.6	289.6
155°	285.6	285.3	285.0	284.8	284.5	284.4	284.1	284.0	283.9	283.7	283.8
157.5°	280.2	280.1	280.1	280.1	280.1	280.0	279.9	280.0	279.9	280.0	280.1
160°	277.2	277.1	276.9	276.7	276.6	276.4	276.2	276.2	276.1	276.0	276.2
162.5°	274.3	274.4	274.4	274.5	274.7	274.8	275.0	275.3	275.3	275.5	275.7
165°	274.1	274.0	273.9	273.8	273.8	273.8	273.7	273.9	273.8	273.9	274.2
167.5°	272.8	273.0	273.1	273.3	273.4	273.6	273.9	274.2	274.4	274.7	275.0
170°	273.9	273.9	273.9	273.9	273.9	274.0	274.1	274.1	274.2	274.3	274.5
172.5°	276.1	276.1	276.0	276.1	276.0	276.1	276.1	276.1	276.1	276.2	276.3
175°	276.4	276.7	276.9	277.0	277.2	277.2	277.4	277.5	277.7	277.8	277.8
177.5°	277.7	277.7	277.7	277.7	277.7	277.8	277.8	277.8	277.8	277.7	277.8
180°	277.5	277.5	277.5	277.5	277.5	277.5	277.5	277.5	277.5	277.5	277.5



TEST NUMBER: P1444725
 CATALOG NUMBER: EHBR1-18-UNV-TA-L935-UPL24

CANDELA DISTRIBUTION (continued):

	275°	277.5°	280°	282.5°	285°	287.5°	290°	292.5°	295°	297.5°	300°
0°	14339.1	14339.1	14339.1	14339.1	14339.1	14339.1	14339.1	14339.1	14339.1	14339.1	14339.1
2.5°	14518.7	14511.4	14518.8	14511.3	14518.8	14509.8	14515.9	14506.2	14508.6	14498.5	14501.1
5°	15067.6	15056.0	15062.2	15047.1	15048.8	15028.7	15028.3	15004.9	14998.7	14972.1	14960.4
7.5°	15511.6	15507.7	15509.9	15500.2	15499.1	15485.4	15478.8	15459.5	15447.4	15422.8	15406.1
10°	15441.3	15452.6	15455.5	15467.1	15469.4	15480.9	15483.3	15494.7	15497.0	15505.6	15505.7
12.5°	14738.5	14776.9	14786.1	14833.5	14853.6	14907.8	14936.9	14996.8	15032.4	15092.0	15128.7
15°	13384.5	13451.0	13477.5	13570.2	13621.5	13729.7	13797.6	13921.8	14009.6	14141.5	14235.6
17.5°	11521.1	11614.0	11655.8	11781.6	11863.6	12023.3	12138.4	12327.8	12472.8	12683.4	12850.3
20°	9454.6	9557.9	9614.8	9758.2	9855.0	10041.5	10185.2	10418.1	10612.1	10878.9	11107.1
22.5°	7455.5	7553.7	7617.0	7762.8	7871.7	8066.3	8226.9	8472.7	8690.2	8990.9	9264.3
25°	5724.4	5814.5	5871.6	6003.5	6105.8	6284.7	6438.0	6674.3	6887.2	7188.7	7469.2
27.5°	4376.2	4451.6	4506.7	4619.2	4709.5	4861.1	4992.9	5188.2	5371.5	5632.5	5882.2
30°	3350.3	3417.2	3470.8	3568.8	3652.4	3783.9	3899.8	4063.8	4215.6	4423.2	4621.8
32.5°	2560.3	2617.8	2665.5	2751.3	2827.2	2945.6	3050.0	3193.7	3324.1	3500.1	3663.6
35°	1952.1	2065.3	2057.3	2175.6	2194.7	2279.6	2372.7	2498.5	2613.9	2763.5	2902.6
37.5°	1515.1	1547.0	1581.1	1633.4	1688.3	1765.6	1844.3	1997.9	2054.3	2167.4	2282.6
40°	1221.8	1243.3	1265.9	1301.2	1339.6	1394.1	1451.4	1524.7	1599.8	1691.6	1785.2
42.5°	1032.9	1045.1	1059.4	1080.3	1103.9	1138.4	1176.8	1226.4	1278.7	1343.3	1409.2
45°	922.9	917.1	921.4	932.5	946.8	967.8	992.0	1022.7	1056.8	1098.6	1143.1
47.5°	820.2	822.6	823.9	829.9	837.5	851.7	866.4	887.2	927.5	939.9	964.2
50°	752.5	753.6	753.3	756.3	760.2	769.4	778.9	793.0	807.1	825.8	843.7
52.5°	695.7	697.3	697.1	699.1	701.1	706.9	712.9	723.0	732.2	744.1	754.3
55°	650.8	653.0	653.8	655.5	656.5	659.6	662.0	666.8	670.7	677.5	683.6
57.5°	616.3	619.3	620.7	621.3	620.1	619.9	619.1	620.1	620.9	624.6	628.0
60°	589.2	591.6	591.9	591.6	589.4	587.8	585.2	584.4	583.9	585.8	587.7
62.5°	560.7	561.7	561.0	560.3	557.8	556.2	553.6	552.6	551.7	553.0	553.9
65°	521.4	522.1	521.4	521.0	518.7	517.5	515.2	514.5	513.3	513.5	513.3
67.5°	489.5	490.2	489.7	489.1	487.5	486.7	485.1	484.0	482.4	481.9	480.8
70°	457.7	458.2	457.3	456.8	455.0	454.3	452.7	452.4	451.2	450.9	449.7
72.5°	421.1	421.1	419.8	419.4	418.1	418.1	417.5	418.0	418.0	418.6	418.4
75°	383.6	383.0	381.5	381.2	380.2	380.7	379.9	380.8	381.0	382.4	382.6
77.5°	346.0	344.1	341.1	339.6	337.6	337.3	336.2	337.0	336.7	338.3	339.0
80°	298.6	296.3	292.4	290.6	288.1	287.8	286.7	287.8	287.2	289.1	290.4
82.5°	238.5	236.4	232.4	230.8	228.1	228.4	227.2	228.4	228.2	230.9	232.6
85°	176.4	175.0	170.8	167.2	163.1	160.7	158.3	158.0	157.2	158.3	159.3
87.5°	101.9	100.6	97.3	95.3	88.1	88.4	85.6	85.4	84.7	84.1	85.6
90°	28.5	31.2	31.6	34.3	34.9	37.7	38.6	41.3	42.1	45.0	46.2
92.5°	26.6	28.4	30.2	31.9	33.7	35.4	37.3	39.0	42.8	46.5	50.4
95°	37.2	39.2	41.2	43.3	45.3	47.4	49.4	51.5	57.1	62.6	68.2
97.5°	53.2	54.5	55.8	57.2	58.5	59.9	61.3	62.6	68.7	74.7	80.7
100°	68.8	69.9	71.0	72.1	73.1	74.2	75.3	76.4	88.1	99.6	111.2
102.5°	109.2	113.8	118.5	123.1	127.7	132.3	136.9	141.6	168.2	194.8	221.3
105°	205.1	217.8	230.5	243.1	255.8	268.5	281.1	293.8	336.3	378.8	421.4
107.5°	378.2	398.2	418.2	438.3	458.3	478.3	498.3	518.4	559.7	601.3	642.7
110°	577.5	596.5	615.6	634.8	653.8	672.9	692.1	711.2	736.0	760.9	785.8



TEST NUMBER: P1444725
 CATALOG NUMBER: EHBR1-18-UNV-TA-L935-UPL24

CANDELA DISTRIBUTION (continued):

	275°	277.5°	280°	282.5°	285°	287.5°	290°	292.5°	295°	297.5°	300°
112.5°	719.9	729.1	738.5	747.8	757.1	766.5	775.8	785.2	797.6	809.9	822.4
115°	763.1	763.7	764.3	764.9	765.5	766.1	766.8	767.6	771.5	775.3	779.2
117.5°	726.6	721.4	716.4	711.2	706.1	701.1	696.2	691.3	690.4	689.4	688.7
120°	652.8	645.9	639.1	632.2	625.5	618.7	612.0	605.3	601.9	598.4	594.9
122.5°	564.4	557.5	550.7	543.9	537.3	530.5	523.9	517.3	514.8	512.3	509.8
125°	480.9	475.2	469.6	463.9	458.4	452.8	447.4	441.8	441.6	441.3	441.1
127.5°	413.5	409.9	406.5	403.0	399.8	396.4	393.2	389.8	391.2	392.5	393.8
130°	366.6	365.1	363.6	362.0	360.8	359.4	358.0	356.6	359.2	361.4	364.0
132.5°	338.4	338.2	337.9	337.7	337.5	337.4	337.4	337.2	340.1	343.0	345.7
135°	321.7	322.0	322.6	323.0	323.7	324.1	324.8	325.4	328.1	330.7	333.4
137.5°	313.1	313.8	314.5	315.2	316.1	316.9	317.8	318.7	320.7	322.8	324.9
140°	308.9	309.2	309.9	310.5	311.1	311.8	312.6	313.2	314.9	316.6	318.2
142.5°	305.0	305.3	305.9	306.5	307.2	307.8	308.4	309.1	310.2	311.4	312.8
145°	304.3	304.6	305.0	305.4	305.8	306.3	306.8	307.2	308.0	308.7	309.5
147.5°	301.1	301.3	301.5	301.8	302.2	302.4	302.6	302.9	303.4	303.8	304.3
150°	296.6	296.6	296.7	296.7	296.9	297.1	297.2	297.4	297.7	298.1	298.5
152.5°	289.7	289.7	289.7	289.8	289.8	289.9	289.9	290.1	290.5	290.8	291.2
155°	284.0	284.1	284.3	284.5	284.8	284.9	285.1	285.3	285.6	285.8	286.0
157.5°	280.2	280.3	280.6	280.8	281.0	281.1	281.4	281.5	281.8	282.0	282.1
160°	276.5	277.0	277.2	277.6	277.9	278.2	278.5	279.0	279.1	279.3	279.5
162.5°	275.9	276.1	276.3	276.5	276.7	276.9	277.1	277.2	277.7	277.9	278.3
165°	274.5	274.8	275.3	275.4	275.9	276.2	276.5	276.9	277.0	277.2	277.4
167.5°	275.3	275.6	276.0	276.3	276.6	277.0	277.2	277.6	277.8	277.9	278.2
170°	274.8	275.2	275.3	275.7	276.0	276.2	276.5	276.9	277.2	277.4	277.7
172.5°	276.5	276.8	277.0	277.2	277.4	277.8	278.0	278.2	278.5	278.8	279.0
175°	277.8	277.8	277.9	277.9	278.0	278.0	278.1	278.2	278.2	278.2	278.2
177.5°	278.0	278.1	278.2	278.3	278.5	278.6	278.8	278.9	278.9	278.9	278.9
180°	277.5	277.5	277.5	277.5	277.5	277.5	277.5	277.5	277.5	277.5	277.5



TEST NUMBER: P1444725
 CATALOG NUMBER: EHBR1-18-UNV-TA-L935-UPL24

CANDELA DISTRIBUTION (continued):

	302.5°	305°	307.5°	310°	312.5°	315°	317.5°	320°	322.5°	325°	327.5°
0°	14339.1	14339.1	14339.1	14339.1	14339.1	14339.1	14339.1	14339.1	14339.1	14339.1	14339.1
2.5°	14490.9	14491.6	14479.9	14479.2	14468.3	14466.9	14456.2	14453.0	14444.3	14441.2	14432.4
5°	14930.6	14916.4	14883.5	14864.1	14831.6	14810.1	14774.9	14752.0	14718.0	14692.3	14658.2
7.5°	15375.2	15353.1	15316.1	15286.2	15241.2	15205.1	15152.4	15109.1	15052.0	15002.5	14942.4
10°	15505.7	15502.2	15492.8	15479.1	15458.2	15434.5	15398.6	15361.1	15311.1	15256.6	15189.9
12.5°	15184.7	15219.4	15266.7	15294.7	15328.7	15343.7	15357.7	15354.1	15345.0	15317.4	15278.8
15°	14371.9	14469.3	14598.2	14698.1	14813.0	14896.6	14988.9	15046.4	15103.7	15130.2	15146.4
17.5°	13079.0	13263.3	13494.4	13686.0	13907.1	14084.6	14279.2	14425.8	14576.4	14684.3	14782.0
20°	11418.0	11685.1	12012.1	12301.0	12636.8	12928.6	13248.4	13511.0	13781.8	13993.5	14193.9
22.5°	9616.6	9933.8	10329.1	10695.2	11128.2	11517.3	11956.3	12338.4	12737.4	13070.6	13392.9
25°	7845.1	8193.0	8625.2	9033.7	9524.1	9976.7	10497.3	10973.6	11489.2	11936.8	12379.1
27.5°	6227.5	6569.1	7010.3	7445.2	7963.7	8446.0	9003.8	9528.5	10115.6	10657.0	11210.8
30°	4898.0	5187.6	5583.3	6004.5	6516.0	7006.7	7570.6	8110.2	8721.0	9312.2	9936.0
32.5°	3880.5	4101.2	4412.3	4768.5	5240.3	5707.4	6244.4	6765.3	7366.8	7963.9	8612.8
35°	3081.9	3254.0	3491.2	3769.1	4168.7	4571.3	5046.3	5520.0	6081.2	6647.8	7278.5
37.5°	2430.2	2569.9	2755.6	2964.4	3284.9	3615.4	4004.8	4397.5	4885.1	5387.4	5959.0
40°	1897.8	2010.8	2155.4	2311.1	2553.1	2807.8	3109.0	3413.5	3805.2	4215.8	4688.8
42.5°	1490.8	1574.2	1676.3	1790.2	2015.9	2151.2	2355.4	2575.7	2863.6	3161.6	3517.3
45°	1197.3	1254.2	1325.0	1401.3	1506.1	1620.8	1760.6	1907.4	2180.9	2315.1	2531.4
47.5°	999.9	1038.0	1083.1	1131.2	1193.0	1259.7	1342.6	1427.5	1537.1	1650.8	1784.1
50°	866.9	905.7	921.2	946.1	981.8	1020.0	1066.7	1113.5	1172.3	1232.0	1300.6
52.5°	768.2	780.8	797.7	813.5	835.6	879.0	893.1	917.5	950.5	982.7	1018.8
55°	692.8	701.0	712.0	721.5	734.9	747.8	766.3	782.5	804.5	823.9	847.9
57.5°	634.2	639.4	647.0	653.3	662.0	669.1	680.0	688.8	701.5	712.5	727.0
60°	591.6	595.0	600.2	604.2	609.8	613.5	618.9	623.0	629.7	635.3	643.4
62.5°	556.8	558.6	561.8	564.3	567.8	569.7	572.5	574.3	578.1	580.9	585.4
65°	515.0	515.3	517.6	518.6	521.4	522.4	524.8	525.6	528.6	530.7	534.6
67.5°	480.7	479.8	479.8	479.0	479.4	478.6	478.8	478.0	479.2	479.8	482.9
70°	449.4	448.2	447.7	446.3	445.8	444.4	443.9	442.7	442.5	442.0	443.1
72.5°	419.0	418.6	418.7	417.7	417.6	416.6	416.7	416.1	416.7	417.1	418.5
75°	384.0	384.1	384.8	383.9	384.2	383.3	383.6	382.8	383.3	383.1	384.5
77.5°	341.4	342.4	344.2	343.9	344.5	343.5	344.0	342.9	343.1	342.4	343.0
80°	293.5	295.6	298.1	298.0	299.0	298.4	299.3	298.3	298.6	297.4	297.1
82.5°	236.6	238.4	241.0	241.1	243.4	243.9	246.4	246.3	248.0	247.0	246.2
85°	161.7	163.0	165.3	166.6	168.9	170.4	172.9	173.9	172.1	175.5	172.8
87.5°	84.5	87.6	85.8	89.9	89.0	93.1	92.2	96.1	95.3	98.6	98.2
90°	49.7	51.1	54.7	56.2	60.4	62.2	62.6	60.5	60.8	58.7	59.0
92.5°	54.1	58.1	61.9	65.7	69.5	73.4	69.8	66.3	62.7	59.3	55.6
95°	73.8	79.4	84.9	90.5	96.1	101.7	95.7	89.8	83.8	77.9	71.8
97.5°	86.6	92.7	98.7	104.7	110.7	116.6	109.6	102.5	95.4	88.5	81.3
100°	122.8	134.3	145.9	157.5	169.1	180.7	167.6	154.4	141.2	128.0	114.8
102.5°	248.0	274.4	301.1	327.6	354.2	380.8	352.8	324.8	296.8	268.9	240.8
105°	463.9	506.5	548.9	591.5	633.9	676.6	631.2	585.8	540.4	495.0	449.5
107.5°	684.2	725.6	767.2	808.5	850.0	891.6	845.5	799.5	753.5	707.4	661.3
110°	810.7	835.5	860.5	885.4	910.3	935.2	901.6	868.0	834.4	800.7	767.0



TEST NUMBER: P1444725
 CATALOG NUMBER: EHBR1-18-UNV-TA-L935-UPL24

CANDELA DISTRIBUTION (continued):

	302.5°	305°	307.5°	310°	312.5°	315°	317.5°	320°	322.5°	325°	327.5°
112.5°	834.7	847.2	859.6	872.2	884.6	897.1	873.0	849.0	824.9	800.8	776.6
115°	783.1	787.0	790.9	794.9	798.7	802.6	786.4	770.1	753.9	737.7	721.3
117.5°	687.9	687.2	686.3	685.6	684.7	684.0	674.9	665.8	656.5	647.4	638.2
120°	591.5	587.9	584.5	581.0	577.6	574.1	570.2	566.3	562.3	558.4	554.3
122.5°	507.5	505.0	502.6	500.1	497.6	495.0	493.5	492.0	490.3	488.7	487.1
125°	440.9	440.6	440.4	440.1	439.8	439.6	438.7	437.8	436.9	436.0	435.0
127.5°	395.1	396.4	397.7	399.0	400.1	401.4	401.1	400.8	400.4	400.1	399.8
130°	366.2	368.8	371.1	373.4	375.7	378.1	377.5	376.9	376.4	375.9	375.2
132.5°	348.6	351.3	354.1	356.9	359.6	362.3	361.6	361.0	360.2	359.5	358.8
135°	336.1	338.8	341.3	344.0	346.6	349.1	348.2	347.5	346.6	345.9	344.9
137.5°	327.0	329.1	331.1	333.2	335.2	337.2	336.3	335.5	334.6	333.8	333.0
140°	319.8	321.5	323.0	324.6	326.2	327.7	326.7	325.7	324.7	323.7	322.7
142.5°	313.9	315.0	316.1	317.4	318.5	319.7	318.2	316.9	315.7	314.3	312.9
145°	310.2	311.0	311.7	312.4	313.0	313.7	312.1	310.7	309.1	307.7	306.1
147.5°	304.7	305.2	305.4	306.0	306.2	306.6	305.2	303.7	302.4	300.9	299.4
150°	298.8	299.3	299.5	299.9	300.3	300.5	299.1	297.5	296.1	294.6	293.1
152.5°	291.6	291.9	292.2	292.5	292.8	293.1	291.7	290.4	288.9	287.5	286.1
155°	286.1	286.4	286.5	286.8	286.8	286.9	285.7	284.7	283.4	282.3	281.1
157.5°	282.3	282.5	282.7	282.8	283.0	283.0	282.1	281.3	280.3	279.5	278.5
160°	279.7	279.8	280.0	280.1	280.2	280.3	279.5	278.9	278.2	277.3	276.5
162.5°	278.6	279.0	279.1	279.4	279.7	280.0	279.1	278.2	277.3	276.4	275.4
165°	277.5	277.7	277.9	278.1	278.1	278.2	277.6	277.1	276.4	275.8	275.2
167.5°	278.2	278.4	278.5	278.7	278.8	278.9	278.2	277.7	277.0	276.4	275.7
170°	278.0	278.2	278.5	278.7	279.0	279.1	278.6	278.2	277.6	277.2	276.6
172.5°	279.2	279.4	279.6	279.8	280.0	280.2	279.7	279.1	278.7	278.2	277.6
175°	278.2	278.3	278.4	278.4	278.4	278.5	278.2	277.7	277.3	276.9	276.5
177.5°	278.9	278.9	278.9	278.9	278.9	278.9	278.6	278.3	278.1	277.8	277.4
180°	277.5	277.5	277.5	277.5	277.5	277.5	277.5	277.5	277.5	277.5	277.5



TEST NUMBER: P1444725
 CATALOG NUMBER: EHBR1-18-UNV-TA-L935-UPL24

CANDELA DISTRIBUTION (continued):

	330°	332.5°	335°	337.5°	340°	342.5°	345°	347.5°	350°	352.5°	355°
0°	14339.1	14339.1	14339.1	14339.1	14339.1	14339.1	14339.1	14339.1	14339.1	14339.1	14339.1
2.5°	14429.2	14423.0	14419.0	14413.8	14410.6	14406.6	14403.7	14401.2	14399.2	14397.3	14396.0
5°	14632.1	14599.9	14574.9	14547.8	14525.5	14503.3	14486.1	14472.0	14462.2	14454.9	14450.5
7.5°	14890.4	14831.4	14778.9	14723.7	14674.1	14625.3	14583.4	14547.2	14520.0	14502.4	14491.7
10°	15121.2	15042.2	14963.9	14881.7	14803.7	14728.0	14658.2	14596.7	14548.1	14515.8	14496.9
12.5°	15224.6	15157.3	15077.4	14988.1	14892.4	14795.7	14701.5	14616.5	14545.1	14497.2	14469.5
15°	15133.5	15105.9	15051.7	14982.3	14891.6	14791.7	14680.9	14576.9	14481.1	14419.1	14383.1
17.5°	14837.2	14875.8	14871.7	14845.1	14780.0	14695.8	14582.9	14466.1	14346.4	14263.4	14218.0
20°	14337.2	14458.5	14520.0	14551.7	14526.0	14471.4	14369.3	14250.7	14111.1	14002.8	13936.7
22.5°	13634.6	13848.8	13982.2	14079.8	14100.6	14081.9	13991.7	13879.0	13723.4	13593.2	13495.6
25°	12730.1	13043.9	13254.7	13420.0	13484.3	13500.9	13424.1	13311.9	13138.5	12986.9	12852.7
27.5°	11664.8	12072.4	12354.0	12576.1	12676.4	12719.9	12649.2	12534.7	12329.6	12148.5	11973.4
30°	10465.5	10949.0	11288.1	11554.3	11676.6	11734.1	11659.0	11531.2	11292.6	11074.6	10854.0
32.5°	9181.7	9711.0	10080.3	10369.6	10490.7	10544.7	10446.5	10303.1	10027.2	9770.5	9513.2
35°	7837.7	8371.9	8744.4	9026.0	9127.4	9160.0	9034.5	8868.6	8562.9	8281.2	8000.6
37.5°	6466.3	6963.2	7301.8	7554.5	7617.3	7623.0	7471.7	7288.5	6967.2	6689.4	6410.1
40°	5106.7	5525.8	5799.1	6001.4	6023.3	6003.8	5839.4	5655.0	5354.4	5105.5	4860.4
42.5°	3826.1	4142.5	4337.5	4476.1	4467.8	4429.4	4278.7	4120.2	3872.2	3682.7	3489.7
45°	2729.0	2937.6	3051.6	3132.7	3106.6	3070.0	2952.7	2841.6	2673.1	2550.7	2421.0
47.5°	1895.9	2144.9	2101.6	2260.1	2123.5	2213.8	2025.8	1922.2	1832.9	1767.8	1694.5
50°	1357.2	1414.3	1441.9	1460.7	1450.8	1436.9	1403.1	1372.9	1332.0	1302.3	1267.6
52.5°	1048.2	1076.7	1092.3	1103.6	1101.5	1096.4	1081.7	1068.2	1049.1	1036.5	1021.3
55°	887.8	888.3	917.0	904.7	922.9	901.5	910.0	886.3	890.1	869.8	856.2
57.5°	737.8	749.4	754.7	759.9	758.4	757.5	751.8	748.9	742.5	740.6	735.9
60°	649.0	655.1	656.4	658.7	656.7	656.0	651.6	649.9	645.7	644.9	641.8
62.5°	588.1	591.2	591.2	591.2	588.7	586.2	581.2	578.7	575.0	574.3	572.4
65°	537.3	540.5	541.1	541.7	539.9	538.0	533.6	530.7	527.0	525.6	523.6
67.5°	484.8	488.2	489.4	491.2	490.1	489.8	486.8	485.7	483.2	482.6	480.7
70°	443.6	445.1	445.0	444.9	442.6	440.5	437.0	435.4	432.8	432.2	430.6
72.5°	419.2	420.2	419.5	418.6	415.6	412.5	408.5	405.5	402.0	400.0	397.5
75°	384.6	386.0	385.1	384.6	381.8	379.8	376.6	374.9	372.5	371.9	370.2
77.5°	342.3	343.0	341.5	341.4	339.3	338.1	335.6	335.2	333.4	333.4	331.9
80°	295.2	294.7	292.6	292.1	290.0	289.5	287.6	287.8	286.3	286.9	285.8
82.5°	242.9	241.5	238.6	237.7	235.4	235.2	233.9	234.9	234.1	235.4	234.6
85°	174.0	174.4	173.1	173.1	172.5	172.7	172.6	173.4	173.5	174.6	174.6
87.5°	97.1	98.4	98.2	99.4	99.3	100.8	101.3	103.4	103.7	105.7	105.7
90°	57.0	57.5	55.4	56.0	55.0	56.5	55.8	57.3	56.5	57.6	56.3
92.5°	52.1	48.6	45.1	41.5	39.7	37.9	36.3	34.3	32.6	30.8	29.0
95°	65.8	59.8	53.8	47.9	45.8	43.7	41.6	39.6	37.5	35.5	33.4
97.5°	74.2	67.2	60.1	53.0	51.2	49.5	47.6	45.9	44.0	42.3	40.5
100°	101.6	88.4	75.3	62.0	60.5	59.0	57.5	56.0	54.5	53.0	51.5
102.5°	212.9	184.9	156.8	128.8	123.4	118.2	112.8	107.4	102.1	96.8	91.4
105°	404.2	358.7	313.3	267.8	253.4	239.0	224.5	210.1	195.7	181.3	166.8
107.5°	615.2	569.1	523.0	476.9	450.4	423.6	397.0	370.1	343.6	316.8	290.1
110°	733.4	699.7	666.0	632.3	610.9	589.4	567.8	546.3	524.9	503.4	481.8



TEST NUMBER: P1444725
 CATALOG NUMBER: EHBR1-18-UNV-TA-L935-UPL24

CANDELA DISTRIBUTION (continued):

	330°	332.5°	335°	337.5°	340°	342.5°	345°	347.5°	350°	352.5°	355°
112.5°	752.6	728.5	704.3	680.1	670.4	660.6	650.9	641.1	631.3	621.5	611.8
115°	704.9	688.7	672.3	655.8	652.5	649.0	645.6	642.0	638.6	635.1	631.5
117.5°	629.1	619.8	610.6	601.3	601.8	602.4	602.9	603.4	603.8	604.2	604.7
120°	550.3	546.3	542.4	538.3	541.3	544.1	547.0	549.8	552.7	555.4	558.2
122.5°	485.4	483.7	482.2	480.4	484.0	487.4	490.9	494.3	497.7	500.9	504.2
125°	434.2	433.2	432.4	431.3	434.9	438.4	441.8	445.3	448.7	452.0	455.3
127.5°	399.5	399.1	398.8	398.3	400.9	403.2	405.7	407.9	410.5	412.7	414.8
130°	374.7	374.0	373.5	372.9	375.0	377.2	379.5	381.5	383.6	385.6	387.5
132.5°	358.2	357.4	356.7	356.0	357.6	359.1	360.6	361.9	363.4	364.6	365.9
135°	344.2	343.2	342.5	341.5	343.0	344.4	345.8	347.0	348.3	349.4	350.6
137.5°	332.2	331.3	330.4	329.5	330.8	332.1	333.3	334.3	335.4	336.5	337.4
140°	321.7	320.6	319.7	318.6	319.7	320.7	321.8	322.8	323.8	324.6	325.6
142.5°	311.5	310.1	309.0	307.5	308.3	309.1	309.8	310.5	311.3	312.0	312.5
145°	304.6	303.0	301.5	299.9	300.6	301.2	301.8	302.4	302.8	303.2	303.7
147.5°	298.0	296.5	295.0	293.6	294.1	294.5	294.8	295.2	295.6	295.9	296.2
150°	291.6	290.0	288.5	286.9	287.3	287.7	288.0	288.4	288.7	288.9	289.2
152.5°	284.7	283.2	281.8	280.3	280.6	280.9	281.1	281.4	281.7	281.9	282.1
155°	280.0	278.7	277.5	276.2	276.5	276.7	276.9	277.2	277.3	277.5	277.6
157.5°	277.6	276.5	275.7	274.6	274.7	274.8	274.9	274.8	274.9	274.9	274.9
160°	275.7	274.9	274.1	273.2	273.2	273.3	273.3	273.3	273.3	273.2	273.2
162.5°	274.5	273.5	272.6	271.5	271.6	271.6	271.7	271.6	271.7	271.5	271.5
165°	274.4	273.8	273.1	272.4	272.3	272.2	272.1	271.9	271.8	271.5	271.4
167.5°	275.1	274.3	273.6	272.8	272.9	273.0	273.1	273.0	273.1	272.9	273.0
170°	276.1	275.4	274.9	274.3	274.2	274.2	274.0	273.9	273.8	273.6	273.5
172.5°	277.0	276.4	275.9	275.2	275.2	275.2	275.1	275.0	274.8	274.7	274.7
175°	276.0	275.6	275.1	274.7	274.6	274.6	274.5	274.5	274.4	274.3	274.3
177.5°	277.2	276.9	276.5	276.2	276.2	276.2	276.2	276.1	276.1	276.1	276.0
180°	277.5	277.5	277.5	277.5	277.5	277.5	277.5	277.5	277.5	277.5	277.5



TEST NUMBER: P1444725
 CATALOG NUMBER: EHBR1-18-UNV-TA-L935-UPL24

CANDELA DISTRIBUTION (continued):

	357.5°	360°
0°	14339.1	14339.1
2.5°	14394.7	14394.0
5°	14448.2	14447.3
7.5°	14488.9	14488.7
10°	14493.7	14496.2
12.5°	14464.8	14466.8
15°	14380.4	14384.3
17.5°	14218.9	14224.0
20°	13940.8	13946.1
22.5°	13490.3	13492.5
25°	12835.4	12826.1
27.5°	11942.6	11926.7
30°	10807.7	10792.2
32.5°	9454.5	9444.9
35°	7931.3	7925.1
37.5°	6327.6	6315.1
40°	4770.7	4734.5
42.5°	3405.3	3341.6
45°	2353.3	2277.9
47.5°	1642.8	1596.2
50°	1245.2	1230.2
52.5°	1014.6	1011.1
55°	856.1	854.6
57.5°	737.0	736.5
60°	643.4	643.2
62.5°	573.6	573.9
65°	524.5	524.6
67.5°	481.2	480.9
70°	431.2	430.9
72.5°	396.8	396.2
75°	370.2	369.8
77.5°	332.4	331.8
80°	286.6	285.8
82.5°	235.6	234.8
85°	175.8	175.8
87.5°	107.6	107.5
90°	57.3	55.7
92.5°	27.4	25.6
95°	31.4	29.4
97.5°	38.8	37.0
100°	50.0	48.5
102.5°	86.2	80.8
105°	152.4	137.9
107.5°	263.4	236.7
110°	460.3	438.8



TEST NUMBER: P1444725
CATALOG NUMBER: EHBR1-18-UNV-TA-L935-UPL24

CANDELA DISTRIBUTION (continued):

	357.5°	360°
112.5°	601.9	592.1
115°	627.9	624.4
117.5°	605.1	605.4
120°	560.7	563.5
122.5°	507.4	510.6
125°	458.5	461.7
127.5°	416.9	419.0
130°	389.2	391.1
132.5°	367.0	368.1
135°	351.5	352.5
137.5°	338.3	339.1
140°	326.2	326.9
142.5°	313.0	313.4
145°	304.0	304.3
147.5°	296.2	296.5
150°	289.3	289.5
152.5°	282.1	282.3
155°	277.7	277.8
157.5°	274.7	274.7
160°	273.1	273.0
162.5°	271.4	271.4
165°	271.2	270.9
167.5°	272.8	272.9
170°	273.3	273.3
172.5°	274.5	274.4
175°	274.2	274.2
177.5°	276.0	275.9
180°	277.5	277.5

Cooper Lighting Solutions Photometric Lab
1121 Highway 74 South
Peachtree City, GA 30269



LM-79-2019: Approved Method: Electrical and Photometric Measurements of Solid-State Lighting Products

Report Prepared for

Cooper Lighting Solutions

Metalux

Report Number: SP1-2506-472-6

Test Date: 08/01/2025

Luminaire Tested: EHBR-60-L935-N

Data in this report applies to families of products including EHBR-60-L935-N

Test Information

Test Method: LM-79-2019
 Report Number: SP1-2506-472-6
 Test Lab: COOPER LIGHTING SOLUTIONS
 Photometer: SP1 - 76IN SPHERE
 Measurement Geometry: 4π
 Issue Date: 08/05/2025
 Manufacturer: COOPER LIGHTING SOLUTIONS
 Product Line: Metalux
 Catalog Number: **EHBR-60-L935-N**
 Description: Elevate Round Highbay at, 60000 lumens, 3500K 90CRI LEDs with N lens

Spectral Parameters

CCT (K): 3406
 CIE u': 0.2394
 CIE v': 0.5094
 Duv: -0.0028
 CIE x: 0.4076
 CIE y: 0.3856
 CIE z: 0.2068
 Peak Wavelength (nm): 630
 Dominant Wavelength (nm): 582
 Purity: 38.0517
 Rf: 91.3
 Rg: 100

CRI (Ra):	94.6		
R1:	96.6	R9:	63.8
R2:	98.4	R10:	94.7
R3:	98.1	R11:	96.6
R4:	95.8	R12:	80.9
R5:	96.2	R13:	97.4
R6:	95.4	R14:	98.3
R7:	91.8	R15:	93.1
R8:	84.4		



Test Conditions

Stabilization Time: 35M
 Operation Time: 1H 35M
 Sphere Temperature (°C): 25.0

REPORT NUMBER: SP1-2506-472-6

Measurement and Test Equipment			
Instrument	Identification Number	Calibration Date	Calibration Due Date
Photometer	76INCH SPHERE IN0058	6/16/2025	12/16/2025
Power Meter	XITRON INXT2011004	1/21/2025	1/21/2026
AC Power Source	CHROMA 61603 IN0063	10/22/2024	10/22/2025
DC Power Source	AGILENT E3634A IN0208	10/22/2024	10/22/2025
Sphere Thermometer	ONSET IN0085	10/22/2024	10/22/2025
Room Thermometer	ONSET IN0046	10/22/2024	10/22/2025

REPORT NUMBER: SP1-2506-472-6

CIE 1931 Chromaticity Diagram



CIE 1931 Chromaticity Diagram with 2017 ANSI 7-Step and 4-Step Quadrangles



Point lies inside the ANSI 3500K 4-step quadrangle

REPORT NUMBER: SP1-2506-472-6

Photopic Flux vs. Wavelength



Photopic Lumens: NR

λ (nm)	Power W [^] /nm	Lumens (φ/nm)	λ (nm)	Power W [^] /nm	Lumens (φ/nm)	λ (nm)	Power W [^] /nm	Lumens (φ/nm)	λ (nm)	Power W [^] /nm	Lumens (φ/nm)	λ (nm)	Power W [^] /nm	Lumens (φ/nm)
360	0	NR	490	140	NR	620	338	NR	750	8	NR	880	0	NR
365	0	NR	495	159	NR	625	339	NR	755	7	NR	885	0	NR
370	0	NR	500	182	NR	630	1000	NR	760	5	NR	890	0	NR
375	0	NR	505	202	NR	635	653	NR	765	5	NR	895	0	NR
380	0	NR	510	216	NR	640	222	NR	770	4	NR	900	0	NR
385	0	NR	515	228	NR	645	214	NR	775	3	NR	905	0	NR
390	0	NR	520	236	NR	650	185	NR	780	3	NR	910	0	NR
395	1	NR	525	242	NR	655	157	NR	785	3	NR	915	0	NR
400	2	NR	530	248	NR	660	133	NR	790	2	NR	920	0	NR
405	3	NR	535	253	NR	665	113	NR	795	2	NR	925	0	NR
410	4	NR	540	258	NR	670	103	NR	800	2	NR	930	0	NR
415	7	NR	545	264	NR	675	85	NR	805	1	NR	935	0	NR
420	13	NR	550	270	NR	680	72	NR	810	1	NR	940	0	NR
425	22	NR	555	278	NR	685	62	NR	815	1	NR	945	0	NR
430	38	NR	560	286	NR	690	53	NR	820	1	NR	950	0	NR
435	65	NR	565	295	NR	695	45	NR	825	1	NR	955	0	NR
440	108	NR	570	303	NR	700	39	NR	830	1	NR	960	0	NR
445	193	NR	575	311	NR	705	33	NR	835	1	NR	965	0	NR
450	312	NR	580	319	NR	710	28	NR	840	1	NR	970	0	NR
455	300	NR	585	326	NR	715	24	NR	845	0	NR	975	0	NR
460	214	NR	590	332	NR	720	20	NR	850	0	NR	980	0	NR
465	184	NR	595	333	NR	725	17	NR	855	0	NR	985	0	NR
470	153	NR	600	336	NR	730	15	NR	860	0	NR	990	0	NR
475	122	NR	605	337	NR	735	12	NR	865	0	NR	995	0	NR
480	115	NR	610	367	NR	740	10	NR	870	0	NR	1000	0	NR
485	125	NR	615	390	NR	745	9	NR	875	0	NR			

REPORT NUMBER: SP1-2506-472-6

Scotopic Flux vs. Wavelength



Scotopic Lumens: NR

S/P: 1.62

λ (nm)	Power W [^] /nm	Lumens (φ/nm)	λ (nm)	Power W [^] /nm	Lumens (φ/nm)	λ (nm)	Power W [^] /nm	Lumens (φ/nm)	λ (nm)	Power W [^] /nm	Lumens (φ/nm)	λ (nm)	Power W [^] /nm	Lumens (φ/nm)
360	0	NR	490	140	NR	620	338	NR	750	8	NR	880	0	NR
365	0	NR	495	159	NR	625	339	NR	755	7	NR	885	0	NR
370	0	NR	500	182	NR	630	1000	NR	760	5	NR	890	0	NR
375	0	NR	505	202	NR	635	653	NR	765	5	NR	895	0	NR
380	0	NR	510	216	NR	640	222	NR	770	4	NR	900	0	NR
385	0	NR	515	228	NR	645	214	NR	775	3	NR	905	0	NR
390	0	NR	520	236	NR	650	185	NR	780	3	NR	910	0	NR
395	1	NR	525	242	NR	655	157	NR	785	3	NR	915	0	NR
400	2	NR	530	248	NR	660	133	NR	790	2	NR	920	0	NR
405	3	NR	535	253	NR	665	113	NR	795	2	NR	925	0	NR
410	4	NR	540	258	NR	670	103	NR	800	2	NR	930	0	NR
415	7	NR	545	264	NR	675	85	NR	805	1	NR	935	0	NR
420	13	NR	550	270	NR	680	72	NR	810	1	NR	940	0	NR
425	22	NR	555	278	NR	685	62	NR	815	1	NR	945	0	NR
430	38	NR	560	286	NR	690	53	NR	820	1	NR	950	0	NR
435	65	NR	565	295	NR	695	45	NR	825	1	NR	955	0	NR
440	108	NR	570	303	NR	700	39	NR	830	1	NR	960	0	NR
445	193	NR	575	311	NR	705	33	NR	835	1	NR	965	0	NR
450	312	NR	580	319	NR	710	28	NR	840	1	NR	970	0	NR
455	300	NR	585	326	NR	715	24	NR	845	0	NR	975	0	NR
460	214	NR	590	332	NR	720	20	NR	850	0	NR	980	0	NR
465	184	NR	595	333	NR	725	17	NR	855	0	NR	985	0	NR
470	153	NR	600	336	NR	730	15	NR	860	0	NR	990	0	NR
475	122	NR	605	337	NR	735	12	NR	865	0	NR	995	0	NR
480	115	NR	610	367	NR	740	10	NR	870	0	NR	1000	0	NR
485	125	NR	615	390	NR	745	9	NR	875	0	NR			

REPORT NUMBER: SP1-2506-472-6

Melanopic Flux vs. Wavelength



Melanopic Lumens: NR M/P: 3.3

λ (nm)	Power W [^] /nm	Lumens (φ/nm)	λ (nm)	Power W [^] /nm	Lumens (φ/nm)	λ (nm)	Power W [^] /nm	Lumens (φ/nm)	λ (nm)	Power W [^] /nm	Lumens (φ/nm)	λ (nm)	Power W [^] /nm	Lumens (φ/nm)
360	0	NR	490	140	NR	620	338	NR	750	8	NR	880	0	NR
365	0	NR	495	159	NR	625	339	NR	755	7	NR	885	0	NR
370	0	NR	500	182	NR	630	1000	NR	760	5	NR	890	0	NR
375	0	NR	505	202	NR	635	653	NR	765	5	NR	895	0	NR
380	0	NR	510	216	NR	640	222	NR	770	4	NR	900	0	NR
385	0	NR	515	228	NR	645	214	NR	775	3	NR	905	0	NR
390	0	NR	520	236	NR	650	185	NR	780	3	NR	910	0	NR
395	1	NR	525	242	NR	655	157	NR	785	3	NR	915	0	NR
400	2	NR	530	248	NR	660	133	NR	790	2	NR	920	0	NR
405	3	NR	535	253	NR	665	113	NR	795	2	NR	925	0	NR
410	4	NR	540	258	NR	670	103	NR	800	2	NR	930	0	NR
415	7	NR	545	264	NR	675	85	NR	805	1	NR	935	0	NR
420	13	NR	550	270	NR	680	72	NR	810	1	NR	940	0	NR
425	22	NR	555	278	NR	685	62	NR	815	1	NR	945	0	NR
430	38	NR	560	286	NR	690	53	NR	820	1	NR	950	0	NR
435	65	NR	565	295	NR	695	45	NR	825	1	NR	955	0	NR
440	108	NR	570	303	NR	700	39	NR	830	1	NR	960	0	NR
445	193	NR	575	311	NR	705	33	NR	835	1	NR	965	0	NR
450	312	NR	580	319	NR	710	28	NR	840	1	NR	970	0	NR
455	300	NR	585	326	NR	715	24	NR	845	0	NR	975	0	NR
460	214	NR	590	332	NR	720	20	NR	850	0	NR	980	0	NR
465	184	NR	595	333	NR	725	17	NR	855	0	NR	985	0	NR
470	153	NR	600	336	NR	730	15	NR	860	0	NR	990	0	NR
475	122	NR	605	337	NR	735	12	NR	865	0	NR	995	0	NR
480	115	NR	610	367	NR	740	10	NR	870	0	NR	1000	0	NR
485	125	NR	615	390	NR	745	9	NR	875	0	NR			

Summary

$R_f = 91.3$
 $R_g = 100$
 $CIE R_a = 94.6$
 $R_9 = 63.8$



Color Vector Graphics

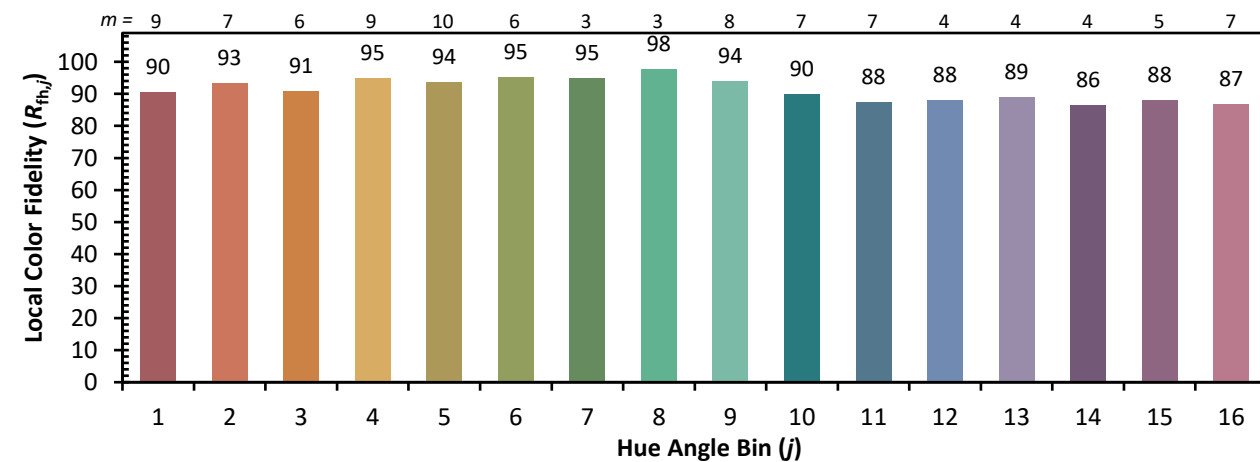
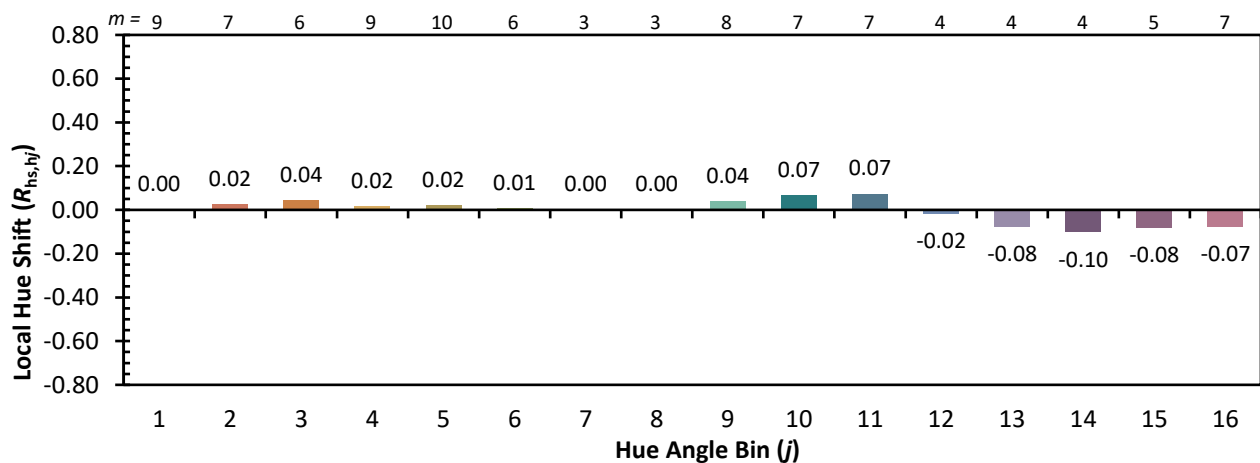
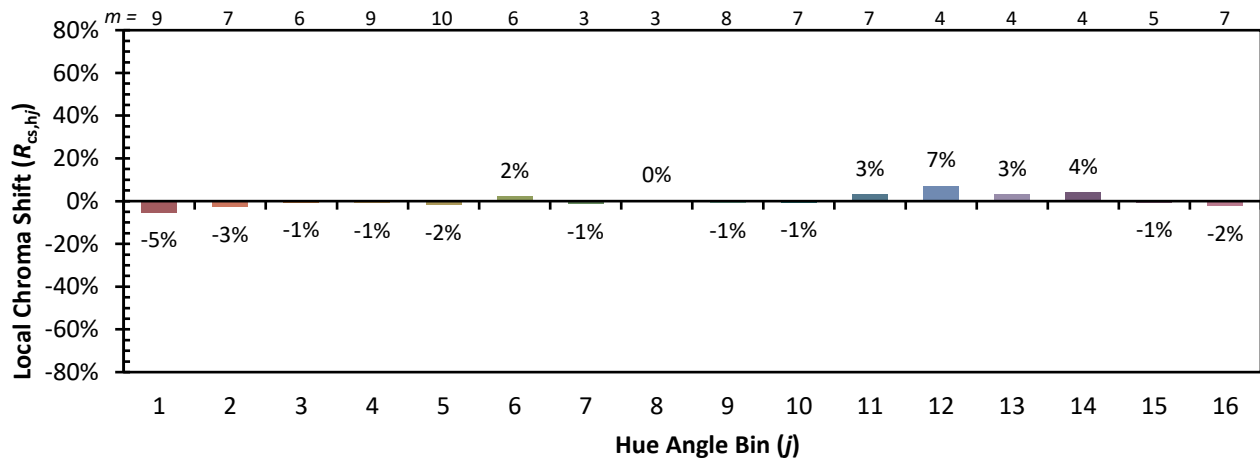


Individual Sample Fidelity Index ($R_{f,i}$)

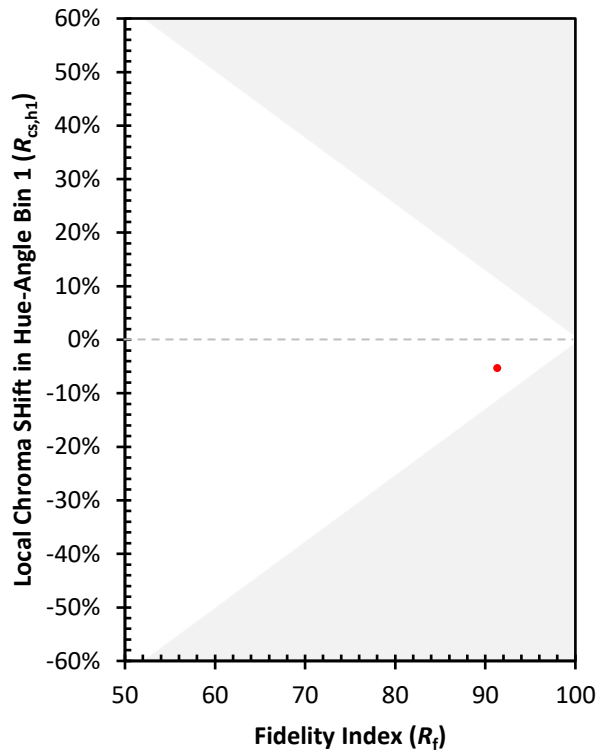
CES01 = 86	CES26 = 94	CES51 = 97	CES76 = 90
CES02 = 63	CES27 = 92	CES52 = 98	CES77 = 86
CES03 = 31	CES28 = 97	CES53 = 98	CES78 = 86
CES04 = 70	CES29 = 97	CES54 = 93	CES79 = 90
CES05 = 50	CES30 = 92	CES55 = 92	CES80 = 91
CES06 = 51	CES31 = 97	CES56 = 96	CES81 = 74
CES07 = 43	CES32 = 89	CES57 = 94	CES82 = 96
CES08 = 41	CES33 = 99	CES58 = 95	CES83 = 94
CES09 = 29	CES34 = 94	CES59 = 98	CES84 = 95
CES10 = 75	CES35 = 97	CES60 = 92	CES85 = 79
CES11 = 58	CES36 = 81	CES61 = 93	CES86 = 79
CES12 = 64	CES37 = 96	CES62 = 86	CES87 = 92
CES13 = 44	CES38 = 87	CES63 = 94	CES88 = 98
CES14 = 74	CES39 = 99	CES64 = 91	CES89 = 84
CES15 = 72	CES40 = 97	CES65 = 90	CES90 = 96
CES16 = 48	CES41 = 96	CES66 = 89	CES91 = 75
CES17 = 49	CES42 = 94	CES67 = 88	CES92 = 76
CES18 = 56	CES43 = 93	CES68 = 89	CES93 = 86
CES19 = 71	CES44 = 99	CES69 = 90	CES94 = 74
CES20 = 67	CES45 = 97	CES70 = 88	CES95 = 83
CES21 = 86	CES46 = 97	CES71 = 83	CES96 = 92
CES22 = 78	CES47 = 91	CES72 = 94	CES97 = 96
CES23 = 91	CES48 = 91	CES73 = 83	CES98 = 95
CES24 = 90	CES49 = 96	CES74 = 90	CES99 = 92
CES25 = 71	CES50 = 98	CES75 = 85	



Color Rendition by Hue-Angle Bin



Measure Comparisons



(END OF REPORT)