

Cooper Lighting Solutions Photometric Lab  
1121 Highway 74 South  
Peachtree City, GA 30269



Scaled data based on original data using  
LM-79-2019 Approved Method: Electrical and Photometric Measurements of Solid-  
State Lighting Products

Test Report Prepared for  
Cooper Lighting Solutions

Brand: METALUX

Report Number: P1444726

Luminaire Tested: EHBR1-18-UNV-TA-L935-UPL30

Issue Date: 5/1/2026

**Test Information**

Test Method: LM-79-2019  
Report Number: P1444726  
REPORT IS A COMBINATION OF REPORTS P1444337 AND P1431635  
Test Lab: INNOVATION CENTER  
Issue Date: 5/1/2026  
Manufacturer: COOPER LIGHTING SOLUTIONS  
Product Line: METALUX  
Catalog Number: EHBR1-18-UNV-TA-L935-UPL30  
Description: Elevate Round Highbay at, 18000 lumens, 3500K 90CRI LEDs with TA lens  
Light Source: -  
Ballast/Driver: -

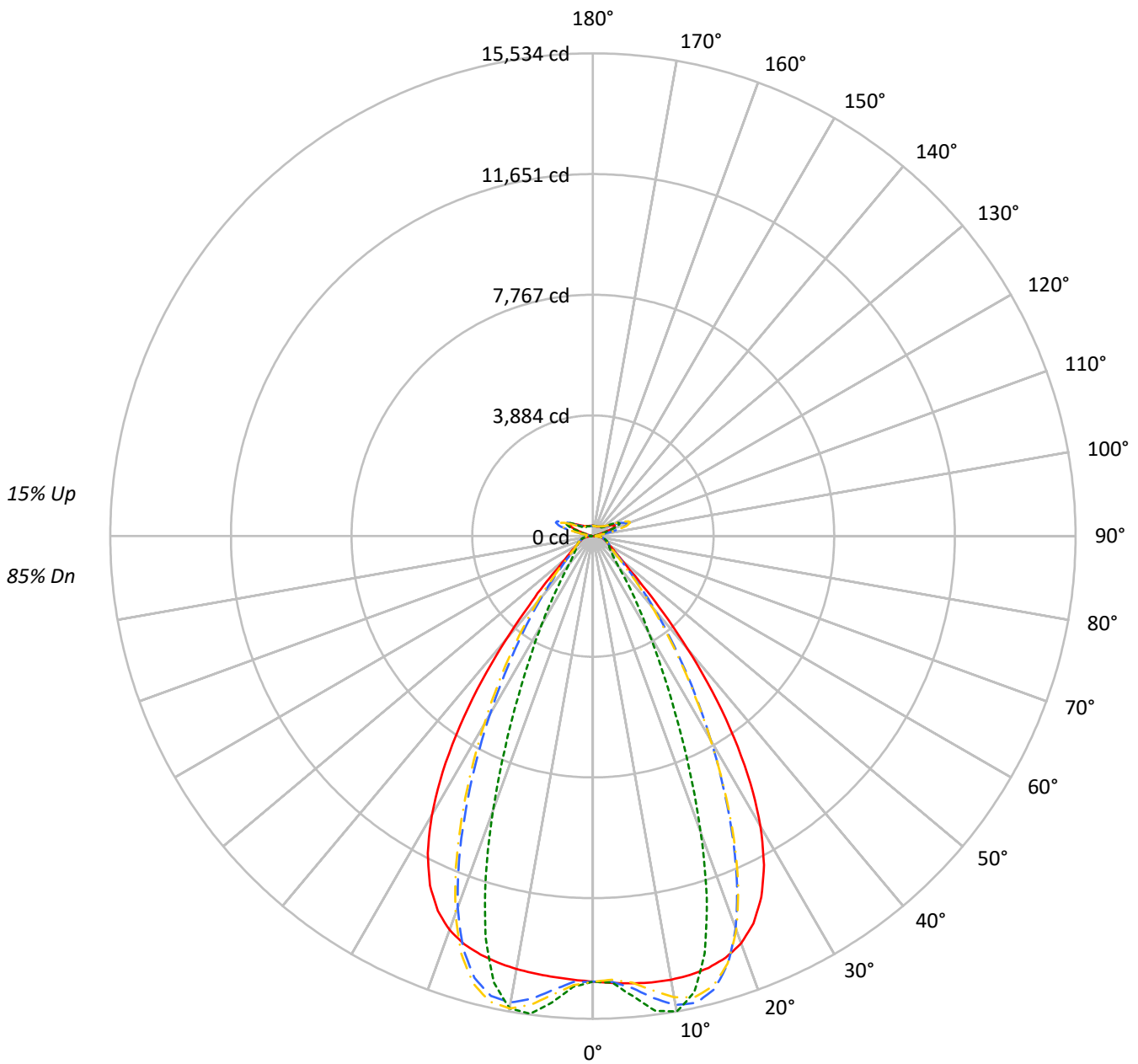
**Summary**

Lumens per Lamp: N/A  
Luminaire Lumens: 19365.5 lumens  
Efficiency: N/A  
Efficacy: 165.9 lumens/watt  
Spacing Criteria (0/90/45): 1.13 / 0.77 / 0.88  
Luminous Opening: Vertical Cylinder (Dia: 1.71' x H: 0.1')  
CIE Type: Semi-Direct

Input Watts (W): 116.7  
Input Voltage (V): NR  
Input Current (A<sub>in</sub>): NR  
Voltage Rise (V): NR  
Power Factor: NR  
Total Harmonic Distortion (THDi): NR  
Frequency (hertz): 60  
Stabilization Time: NR  
Operation Time: NR  
Ambient Temperature (°C): NR  
Test Distance: 24 FT

TEST NUMBER: P1444726  
CATALOG NUMBER: EHBR1-18-UNV-TA-L935-UPL30

### Luminous Intensity Polar Plot



— 0°-180°    - - 45°-225°    ··· 90°-270°    - · 135°-315°



TEST NUMBER: P1444726  
 CATALOG NUMBER: EHBR1-18-UNV-TA-L935-UPL30

**COEFFICIENT OF UTILIZATION - ZONAL CAVITY METHOD:**

RF	20				20				20				20				20				
RC	80				70				50				30				10			0	
RW	70	50	30	10	70	50	30	10	50	30	10	50	30	10	50	30	10	50	30	10	0
RCR																					
0	116	116	116	116	111	111	111	111	103	103	103	95	95	95	88	88	88	88	88	88	85
1	108	105	102	99	104	101	98	96	94	92	90	88	86	85	82	81	80	80	80	80	77
2	101	95	90	86	98	92	88	84	87	83	80	81	79	76	76	74	72	72	72	72	70
3	95	87	81	77	92	85	79	75	80	75	72	75	72	69	71	68	66	66	66	66	64
4	89	80	74	69	86	78	72	67	74	69	65	70	66	63	67	63	61	61	61	61	58
5	84	74	67	62	81	72	66	61	69	63	59	65	61	58	62	59	56	56	56	56	54
6	79	69	62	57	76	67	61	56	64	59	55	61	57	53	58	55	52	52	52	52	50
7	74	64	57	52	72	62	56	52	60	54	50	57	53	49	55	51	48	48	48	48	46
8	70	60	53	48	68	58	52	48	56	51	47	54	49	46	52	48	45	45	45	45	43
9	67	56	49	45	65	55	49	44	53	47	44	51	46	43	49	45	42	42	42	42	40
10	63	52	46	42	61	51	45	41	50	44	41	48	43	40	46	42	39	39	39	39	38

**AVERAGE LUMINANCE (cd/sqm):**

	0°	90°	180°	270°
0°	67338	67338	67338	67338
5°	67664	69637	66717	70549
10°	68229	73114	66593	72630
15°	68564	66277	66476	63608
20°	67855	49374	65634	45683
25°	64227	31226	62104	28332
30°	56107	18765	53934	17149
35°	43180	11775	40697	10430
40°	27316	7386	24991	6941
45°	14079	5754	13846	5660
50°	8254	5118	8001	5038
55°	6324	4842	6089	4799
60°	5350	4946	5123	4882
65°	5026	5166	4833	4990
70°	4911	5409	4666	5206
75°	5250	5736	4966	5484
80°	5433	6353	4925	5800
85°	5115	6127	4134	5249

**MAXIMUM LUMINANCE 45°-90°:**

Horizontal Angle: 25°  
 Vertical Angle: 45°  
 Luminance: 21546 cd/sqm



TEST NUMBER: P1444726  
 CATALOG NUMBER: EHBR1-18-UNV-TA-L935-UPL30

**ZONAL LUMENS:**

Zone	Lumens	% Fixture
0°-10°	1413.2	7.3
10°-20°	3975.4	20.5
20°-30°	4527.6	23.4
30°-40°	3254.2	16.8
40°-50°	1500.9	7.8
50°-60°	718.2	3.7
60°-70°	524.0	2.7
70°-80°	398.1	2.1
80°-90°	186.0	1.0
90°-100°	78.6	0.4
100°-110°	486.1	2.5
110°-120°	898.7	4.6
120°-130°	540.9	2.8
130°-140°	336.1	1.7
140°-150°	240.1	1.2
150°-160°	161.3	0.8
160°-170°	94.4	0.5
170°-180°	31.7	0.2
0°-30°	9916.1	51.2
0°-40°	13170.4	68.0
0°-60°	15389.4	79.5
0°-90°	16497.6	85.2
90°-120°	1463.4	7.6
90°-150°	2580.5	13.3
90°-180°	2868.0	14.8
0°-180°	19365.5	100.0

**CANDELA DISTRIBUTION:**

	0°	90°	180°	270°	360°	Flux
0°	14339	14339	14339	14339	14339	
5°	14447	14869	14245	15063	14447	1381
15°	14384	13904	13946	13345	14384	4053
25°	12826	6236	12402	5658	12826	5814
35°	7925	2161	7469	1914	7925	4864
45°	2278	931	2240	916	2278	1937
55°	855	654	823	648	855	789
65°	525	539	504	521	525	524
75°	370	404	350	386	370	385
85°	176	211	142	180	176	165
90°	60	72	26	29	60	35
95°	36	41	36	41	36	35
105°	172	224	114	225	172	229
115°	780	954	818	954	780	720
125°	574	615	652	615	574	523
135°	434	397	469	398	434	339
145°	372	371	397	373	372	235
155°	337	343	361	345	337	157
165°	326	329	339	330	326	93
175°	329	333	335	333	329	31
180°	333	333	333	333	333	



TEST NUMBER: P1444726  
 CATALOG NUMBER: EHBR1-18-UNV-TA-L935-UPL30

**CANDELA DISTRIBUTION (FULL):**

	0°	2.5°	5°	7.5°	10°	12.5°	15°	17.5°	20°	22.5°	25°
0°	14339.1	14339.1	14339.1	14339.1	14339.1	14339.1	14339.1	14339.1	14339.1	14339.1	14339.1
2.5°	14394.0	14392.8	14392.6	14391.6	14391.3	14391.3	14390.8	14389.6	14388.9	14387.2	14385.4
5°	14447.3	14446.7	14447.1	14447.2	14446.2	14444.0	14440.5	14436.1	14430.8	14425.6	14421.1
7.5°	14488.7	14489.7	14490.9	14490.7	14487.5	14482.2	14475.1	14471.1	14473.4	14481.2	14499.1
10°	14496.2	14502.4	14504.7	14504.0	14497.7	14493.2	14495.0	14510.1	14540.4	14580.8	14635.9
12.5°	14466.8	14474.3	14474.1	14471.6	14465.6	14471.7	14493.7	14538.9	14603.8	14683.3	14776.6
15°	14384.3	14394.0	14391.3	14388.1	14384.0	14404.3	14448.2	14526.7	14626.9	14739.1	14853.9
17.5°	14224.0	14235.9	14230.1	14226.5	14223.0	14261.0	14336.5	14451.5	14577.6	14704.6	14813.3
20°	13946.1	13954.0	13940.3	13933.9	13939.3	14013.8	14125.0	14271.8	14404.7	14524.7	14599.1
22.5°	13492.5	13502.4	13476.8	13473.8	13505.4	13619.6	13760.3	13924.6	14049.5	14144.5	14173.2
25°	12826.1	12835.8	12805.3	12823.6	12877.4	13032.9	13200.6	13376.2	13482.7	13553.2	13533.8
27.5°	11926.7	11935.4	11906.5	11943.8	12029.0	12233.4	12430.6	12621.1	12716.1	12765.5	12702.9
30°	10792.2	10810.5	10776.3	10828.3	10958.3	11223.7	11449.7	11663.3	11758.0	11795.6	11698.3
32.5°	9444.9	9471.0	9433.3	9510.5	9691.9	10010.7	10267.4	10506.2	10610.8	10653.8	10543.8
35°	7925.1	7962.6	7919.4	8035.3	8259.1	8614.0	8898.3	9164.9	9288.9	9349.7	9238.9
37.5°	6315.1	6350.8	6327.4	6482.2	6727.9	7095.7	7385.9	7673.4	7813.6	7904.8	7817.5
40°	4734.5	4767.1	4784.8	4961.7	5192.8	5539.6	5818.4	6102.8	6259.5	6374.0	6320.1
42.5°	3341.6	3374.5	3434.6	3605.4	3798.1	4085.1	4323.9	4579.3	4729.0	4851.2	4830.4
45°	2277.9	2316.1	2391.4	2531.2	2670.6	2876.6	3051.9	3250.5	3372.8	3484.7	3486.0
47.5°	1596.2	1623.1	1690.4	1785.8	1876.7	2134.5	2145.1	2242.7	2324.9	2408.6	2419.4
50°	1230.2	1246.4	1282.1	1335.3	1386.8	1453.7	1514.9	1585.7	1636.3	1682.1	1693.1
52.5°	1011.1	1021.4	1039.6	1068.4	1098.3	1134.6	1167.4	1206.3	1233.8	1258.3	1263.5
55°	854.6	863.1	890.1	895.6	929.8	936.3	950.9	974.6	990.6	1005.3	1008.9
57.5°	736.5	742.6	748.4	760.6	771.2	786.4	798.7	815.7	825.8	836.5	837.4
60°	643.2	647.7	651.8	660.3	667.5	678.1	686.6	698.1	705.4	713.4	714.3
62.5°	573.9	577.1	579.8	585.4	590.6	598.7	605.4	615.0	621.8	628.0	629.4
65°	524.6	526.9	528.7	532.9	537.4	544.3	550.4	558.3	563.3	568.0	569.0
67.5°	480.9	483.2	484.9	488.8	491.9	497.1	501.2	507.1	510.8	514.6	514.7
70°	430.9	432.9	434.3	437.9	440.4	444.8	448.2	453.4	457.3	461.5	462.6
72.5°	396.2	397.4	399.2	402.6	406.0	410.7	415.2	420.7	425.3	429.7	431.6
75°	369.8	371.2	372.5	375.3	377.7	381.7	385.0	390.1	394.1	398.8	401.1
77.5°	331.8	333.4	334.4	337.3	339.3	343.2	345.7	350.2	353.5	357.7	359.8
80°	285.8	287.3	288.1	290.8	292.4	295.9	298.4	302.7	305.4	309.7	312.2
82.5°	234.8	236.3	236.7	239.3	240.2	243.1	244.8	249.3	252.7	258.2	262.0
85°	175.8	176.4	177.2	176.6	180.2	180.4	184.4	185.2	190.4	191.9	197.9
87.5°	107.5	109.1	109.9	112.4	113.4	115.8	116.6	119.2	120.6	123.6	125.0
90°	59.7	63.2	65.0	68.8	70.5	74.1	75.8	79.6	81.4	85.4	88.3
92.5°	31.5	33.7	36.0	38.3	40.6	43.1	45.5	47.8	50.1	52.6	57.0
95°	36.3	38.8	41.3	44.0	46.5	49.0	51.6	54.2	56.7	59.3	66.7
97.5°	45.7	47.9	50.1	52.4	54.6	56.8	59.0	61.3	63.4	65.7	74.6
100°	60.0	61.9	63.7	65.6	67.5	69.3	71.2	73.1	75.0	76.9	93.4
102.5°	100.4	107.0	113.7	120.4	127.1	133.6	140.4	146.9	153.6	160.2	195.3
105°	171.8	189.9	208.0	226.0	244.1	262.2	280.2	298.3	316.3	334.3	391.4
107.5°	295.5	328.8	362.3	395.7	429.1	462.6	496.0	529.4	562.8	596.2	654.0
110°	548.5	575.3	602.3	629.2	656.2	683.1	710.0	736.8	763.8	790.6	832.8



TEST NUMBER: P1444726  
 CATALOG NUMBER: EHBR1-18-UNV-TA-L935-UPL30

**CANDELA DISTRIBUTION (continued):**

	0°	2.5°	5°	7.5°	10°	12.5°	15°	17.5°	20°	22.5°	25°
112.5°	740.3	752.5	764.7	777.0	789.1	801.4	813.5	825.8	837.9	850.0	880.3
115°	780.3	784.6	789.0	793.2	797.7	801.9	806.3	810.5	814.9	819.0	839.6
117.5°	756.1	755.3	754.8	754.2	753.4	752.8	752.2	751.4	750.7	750.0	761.6
120°	702.9	699.2	695.8	692.1	688.5	684.8	681.3	677.7	674.0	670.2	675.3
122.5°	636.2	631.8	627.6	623.2	618.8	614.5	610.1	605.6	601.3	596.9	598.9
125°	574.1	569.7	565.5	561.1	556.8	552.2	547.9	543.4	539.0	534.6	535.7
127.5°	520.0	517.1	514.1	510.9	507.9	504.7	501.7	498.5	495.4	492.1	492.7
130°	484.3	481.6	478.9	476.2	473.6	470.7	467.8	465.0	462.2	459.3	460.1
132.5°	454.7	453.0	451.2	449.3	447.4	445.4	443.5	441.3	439.4	437.3	438.2
135°	434.5	432.8	431.2	429.5	427.8	425.8	424.0	422.1	420.2	418.3	419.4
137.5°	417.1	415.7	414.3	412.6	411.0	409.2	407.7	405.8	404.1	402.3	403.4
140°	401.1	399.9	398.6	397.1	395.7	394.3	392.7	391.1	389.5	387.9	389.3
142.5°	383.6	382.5	381.6	380.5	379.5	378.2	377.0	375.8	374.7	373.3	375.0
145°	371.8	371.0	370.2	369.3	368.3	367.4	366.4	365.3	364.4	363.3	365.1
147.5°	361.4	360.7	360.1	359.5	358.8	357.9	357.1	356.3	355.6	354.6	356.4
150°	352.3	351.7	351.1	350.6	349.8	349.0	348.2	347.5	346.8	345.9	347.6
152.5°	342.9	342.2	341.7	341.1	340.4	339.6	339.0	338.2	337.5	336.7	338.2
155°	336.8	336.2	335.5	335.0	334.3	333.6	332.9	332.3	331.5	330.7	332.0
157.5°	332.4	332.0	331.5	331.0	330.6	330.2	329.6	329.1	328.6	328.1	329.0
160°	329.9	329.5	329.0	328.5	328.0	327.5	327.1	326.6	326.1	325.6	326.3
162.5°	327.4	326.8	326.4	325.9	325.5	325.0	324.6	324.1	323.7	323.1	324.0
165°	326.2	326.0	325.7	325.5	325.2	324.9	324.6	324.4	324.1	323.7	324.4
167.5°	328.2	327.7	327.4	326.9	326.6	326.2	325.7	325.3	325.0	324.5	325.1
170°	328.3	328.0	327.8	327.6	327.5	327.3	327.1	326.8	326.6	326.5	327.0
172.5°	329.5	329.2	329.1	329.0	328.8	328.6	328.5	328.4	328.3	328.0	328.7
175°	328.8	328.6	328.5	328.5	328.4	328.3	328.2	328.1	328.1	327.9	328.4
177.5°	330.9	330.8	330.8	330.8	330.8	330.7	330.7	330.6	330.5	330.5	330.8
180°	332.8	332.8	332.8	332.8	332.8	332.8	332.8	332.8	332.8	332.8	332.8



TEST NUMBER: P1444726  
 CATALOG NUMBER: EHBR1-18-UNV-TA-L935-UPL30

**CANDELA DISTRIBUTION (continued):**

	27.5°	30°	32.5°	35°	37.5°	40°	42.5°	45°	47.5°	50°	52.5°
0°	14339.1	14339.1	14339.1	14339.1	14339.1	14339.1	14339.1	14339.1	14339.1	14339.1	14339.1
2.5°	14384.0	14382.3	14379.9	14376.8	14374.2	14371.2	14364.0	14361.9	14364.3	14365.9	14369.2
5°	14418.2	14419.2	14419.6	14426.1	14431.8	14445.8	14556.1	14600.0	14633.9	14655.4	14688.1
7.5°	14521.2	14554.4	14587.2	14631.3	14669.3	14720.7	14913.7	14995.9	15054.3	15096.3	15147.9
10°	14695.9	14768.3	14836.1	14915.6	14984.0	15062.2	15241.9	15321.9	15372.4	15409.2	15443.6
12.5°	14871.8	14972.1	15062.8	15151.4	15225.3	15293.2	15356.4	15384.4	15386.7	15387.9	15369.7
15°	14963.4	15059.4	15139.2	15197.8	15241.3	15260.5	15151.7	15094.6	15022.5	14963.1	14865.3
17.5°	14905.6	14963.1	14997.7	14994.2	14976.3	14916.1	14608.0	14438.5	14270.2	14118.7	13919.9
20°	14648.5	14644.1	14614.1	14529.0	14426.5	14267.1	13738.8	13434.1	13139.3	12880.6	12566.6
22.5°	14170.3	14095.0	13990.1	13806.7	13602.9	13324.3	12567.3	12119.0	11708.8	11346.4	10940.5
25°	13477.4	13322.6	13129.1	12837.8	12521.1	12114.9	11181.8	10624.3	10131.7	9704.5	9236.1
27.5°	12590.5	12357.3	12073.8	11670.7	11241.7	10721.2	9686.8	9071.4	8542.7	8084.7	7586.2
30°	11540.7	11237.4	10871.2	10370.9	9853.4	9263.1	8214.0	7590.7	7055.5	6584.4	6085.5
32.5°	10354.2	9999.0	9569.9	9008.5	8448.7	7841.8	6828.6	6225.3	5714.0	5260.8	4809.3
35°	9045.6	8664.7	8210.7	7638.0	7081.7	6491.7	5562.0	5018.0	4566.4	4165.9	3801.2
37.5°	7641.9	7267.9	6836.4	6296.6	5780.7	5246.1	4443.9	3988.0	3609.2	3276.7	2995.1
40°	6182.4	5855.2	5481.8	5015.2	4574.9	4129.6	3471.1	3109.3	2810.3	2556.7	2345.8
42.5°	4740.8	4487.2	4200.9	3832.1	3495.3	3156.2	2649.4	2381.3	2159.8	1977.2	1828.1
45°	3439.7	3269.9	3078.0	2821.6	2588.5	2352.0	1991.3	1802.9	1658.7	1540.9	1441.4
47.5°	2404.5	2306.1	2300.1	2063.2	1892.2	1747.6	1515.2	1396.2	1307.8	1236.5	1173.5
50°	1688.6	1641.0	1581.8	1497.3	1418.0	1336.2	1194.6	1122.7	1070.9	1027.7	987.9
52.5°	1262.3	1237.7	1206.1	1161.3	1118.3	1072.3	982.7	936.9	920.6	880.4	848.9
55°	1008.3	994.1	976.2	949.8	923.6	913.2	836.5	802.4	780.9	765.0	748.0
57.5°	837.5	826.9	816.3	798.5	783.3	765.0	724.2	706.8	694.0	684.6	672.9
60°	714.4	708.1	702.1	691.6	683.5	673.6	647.7	637.9	631.2	625.5	618.0
62.5°	630.5	627.3	624.2	618.7	614.5	609.1	591.4	586.7	583.3	580.5	576.0
65°	570.0	567.6	566.0	562.3	560.2	557.0	541.8	538.6	536.5	535.5	532.9
67.5°	515.0	512.5	511.4	508.8	507.9	506.0	493.5	491.8	491.0	491.4	490.4
70°	463.6	462.6	463.0	462.7	463.9	464.2	456.7	456.6	457.4	459.0	459.1
72.5°	432.8	432.8	433.3	433.6	434.7	435.2	429.0	428.7	429.1	430.2	430.2
75°	403.4	403.9	405.5	406.0	407.3	407.6	399.3	398.3	398.4	399.5	399.1
77.5°	362.8	364.5	367.6	369.1	371.8	372.2	362.9	361.8	361.8	363.0	362.0
80°	316.8	320.1	324.9	328.3	332.2	333.8	324.2	321.9	319.8	319.5	317.6
82.5°	267.8	271.9	277.7	280.7	284.9	285.9	269.8	266.8	265.0	265.2	263.5
85°	204.5	207.5	212.8	214.5	217.1	216.9	198.6	190.8	192.9	189.6	192.1
87.5°	128.2	130.1	133.3	133.8	135.0	134.7	116.4	112.7	111.7	111.8	110.4
90°	93.3	96.6	101.5	103.6	107.5	109.3	96.4	96.7	93.7	92.6	89.1
92.5°	61.6	66.1	70.7	75.2	79.8	84.4	87.2	91.2	86.6	81.7	77.1
95°	74.2	81.7	89.2	96.7	104.2	111.7	119.2	126.7	119.7	112.7	105.8
97.5°	83.5	92.4	101.1	109.9	118.8	127.7	136.6	145.5	137.9	130.3	122.8
100°	109.8	126.4	142.9	159.4	176.0	192.6	209.1	225.7	211.2	196.6	182.1
102.5°	230.5	265.6	300.6	335.8	370.9	405.9	441.2	476.4	443.0	409.7	376.3
105°	448.4	505.2	562.2	619.0	675.9	732.9	790.0	846.9	793.7	740.3	687.0
107.5°	711.6	769.6	827.2	884.9	942.7	1000.5	1058.5	1116.2	1064.3	1012.2	960.3
110°	875.1	917.3	959.4	1001.6	1043.7	1086.0	1128.5	1170.7	1139.5	1108.3	1077.2



TEST NUMBER: P1444726  
 CATALOG NUMBER: EHBR1-18-UNV-TA-L935-UPL30

**CANDELA DISTRIBUTION (continued):**

	27.5°	30°	32.5°	35°	37.5°	40°	42.5°	45°	47.5°	50°	52.5°
112.5°	910.5	940.8	971.0	1001.2	1031.3	1061.5	1092.2	1122.5	1107.0	1091.3	1075.9
115°	860.0	880.5	900.9	921.4	941.9	962.2	983.2	1003.8	998.9	994.0	989.3
117.5°	773.1	784.6	796.2	807.6	819.0	830.7	842.9	854.6	855.6	856.7	857.7
120°	680.4	685.4	690.3	695.3	700.2	705.2	711.1	716.3	720.8	725.1	729.6
122.5°	601.1	603.1	605.2	607.2	609.2	611.2	614.4	616.7	619.7	623.0	626.2
125°	536.9	538.1	539.3	540.4	541.4	542.5	545.0	546.2	546.7	547.2	547.6
127.5°	493.1	493.6	494.0	494.5	494.9	495.3	497.1	497.8	496.3	494.8	493.3
130°	460.9	461.6	462.3	463.1	463.9	464.7	466.8	467.8	465.0	462.0	459.2
132.5°	439.1	440.0	440.8	441.8	442.7	443.6	446.0	447.3	443.9	440.6	437.2
135°	420.4	421.5	422.5	423.6	424.7	425.9	428.5	430.0	426.9	423.6	420.4
137.5°	404.4	405.6	406.6	407.8	408.8	409.9	412.8	414.3	411.8	409.3	406.9
140°	390.4	391.6	393.0	394.3	395.5	396.9	400.0	401.7	399.8	397.9	395.9
142.5°	376.5	378.2	379.8	381.5	383.2	384.9	388.5	390.6	389.4	387.8	386.5
145°	366.8	368.7	370.5	372.4	374.3	376.2	380.3	382.6	381.7	380.9	380.1
147.5°	357.8	359.6	361.4	363.0	364.8	366.7	370.7	373.0	372.6	372.1	371.7
150°	349.2	350.9	352.6	354.4	356.2	358.0	362.4	364.9	364.5	364.1	363.6
152.5°	339.7	341.2	342.9	344.4	346.0	347.8	352.7	355.1	354.7	354.3	354.0
155°	333.2	334.4	335.6	337.0	338.2	339.7	344.8	346.9	346.8	346.6	346.4
157.5°	329.8	330.8	331.6	332.6	333.5	334.6	339.6	341.7	341.4	341.2	341.1
160°	327.0	327.8	328.5	329.3	330.0	330.9	335.9	337.7	337.6	337.4	337.2
162.5°	324.8	325.9	326.7	327.7	328.6	329.6	334.8	336.9	336.5	336.2	335.9
165°	325.0	325.6	326.2	326.9	327.5	328.2	332.9	334.5	334.4	334.2	334.1
167.5°	325.7	326.4	327.0	327.6	328.4	329.1	333.5	335.1	335.0	334.8	334.7
170°	327.5	328.0	328.5	329.1	329.6	330.3	333.9	335.3	335.0	334.6	334.3
172.5°	329.2	329.8	330.4	331.0	331.5	332.2	335.3	336.6	336.4	336.2	335.8
175°	328.7	329.2	329.7	330.2	330.6	331.1	333.5	334.5	334.4	334.3	334.3
177.5°	331.2	331.4	331.8	332.2	332.5	332.8	334.3	335.0	334.9	334.9	334.8
180°	332.8	332.8	332.8	332.8	332.8	332.8	332.8	332.8	332.8	332.8	332.8



TEST NUMBER: P1444726  
 CATALOG NUMBER: EHBR1-18-UNV-TA-L935-UPL30

**CANDELA DISTRIBUTION (continued):**

	55°	57.5°	60°	62.5°	65°	67.5°	70°	72.5°	75°	77.5°	80°
0°	14339.1	14339.1	14339.1	14339.1	14339.1	14339.1	14339.1	14339.1	14339.1	14339.1	14339.1
2.5°	14369.9	14375.0	14375.7	14381.6	14381.2	14388.2	14387.1	14392.8	14389.4	14394.1	14390.1
5°	14707.5	14738.1	14754.0	14783.9	14793.4	14820.1	14827.6	14852.0	14853.0	14872.4	14868.0
7.5°	15184.6	15229.7	15256.5	15293.4	15312.2	15342.9	15356.5	15379.2	15386.6	15404.6	15406.0
10°	15469.6	15491.4	15506.7	15517.1	15526.5	15530.9	15536.0	15534.7	15536.0	15534.0	15538.5
12.5°	15357.5	15325.5	15304.4	15264.3	15241.0	15196.8	15175.0	15132.4	15117.0	15080.4	15075.2
15°	14789.8	14678.4	14599.6	14485.0	14413.0	14300.3	14234.4	14132.7	14086.3	14005.4	13984.2
17.5°	13755.3	13548.4	13388.2	13182.7	13040.2	12848.1	12727.4	12568.4	12481.4	12353.2	12308.9
20°	12304.9	11998.6	11758.4	11472.2	11267.4	11012.3	10848.9	10642.8	10523.2	10365.8	10302.0
22.5°	10602.0	10220.8	9920.7	9582.6	9335.6	9051.1	8855.4	8632.5	8502.4	8331.3	8255.6
25°	8846.9	8426.4	8092.9	7736.7	7475.6	7190.5	6994.8	6775.7	6641.0	6478.7	6403.5
27.5°	7168.2	6742.7	6420.3	6089.2	5849.6	5592.4	5415.8	5224.5	5105.1	4966.4	4895.6
30°	5686.9	5311.5	5037.2	4762.4	4563.2	4354.3	4207.5	4049.0	3944.2	3825.4	3758.0
32.5°	4480.1	4190.2	3975.4	3757.4	3594.3	3419.8	3292.9	3153.0	3058.4	2952.5	2891.4
35°	3548.1	3323.0	3151.7	2972.1	2832.0	2683.4	2571.5	2450.9	2366.0	2274.7	2222.0
37.5°	2803.4	2624.4	2483.3	2334.3	2219.1	2096.0	2054.5	1916.0	1828.0	1755.2	1704.8
40°	2200.1	2057.7	1941.1	1827.1	1733.2	1639.7	1564.8	1490.8	1434.0	1381.9	1345.9
42.5°	1718.1	1615.0	1529.8	1446.2	1377.8	1309.7	1255.4	1204.4	1166.2	1132.1	1108.9
45°	1365.8	1294.9	1235.7	1176.9	1128.6	1083.1	1046.5	1014.0	989.3	968.9	954.4
47.5°	1122.0	1073.5	1031.7	992.0	959.3	929.4	905.0	897.0	870.4	852.5	845.7
50°	953.5	924.3	892.6	863.3	841.3	819.6	803.6	788.1	778.2	769.9	767.4
52.5°	827.8	805.5	787.8	769.2	754.8	739.3	728.3	718.0	712.5	708.2	707.7
55°	734.4	718.7	707.0	694.6	685.9	676.8	671.1	665.7	663.3	661.1	661.3
57.5°	663.6	653.2	645.6	637.5	632.8	628.4	627.0	625.6	626.4	626.7	627.9
60°	612.1	605.3	600.5	595.9	593.9	592.6	593.6	594.8	597.4	599.4	601.2
62.5°	572.6	568.7	566.4	563.9	563.6	563.8	565.9	568.0	571.2	573.4	575.2
65°	531.9	529.7	529.0	527.4	528.2	528.7	531.2	532.8	535.9	537.8	540.0
67.5°	490.9	490.3	490.9	490.9	492.2	493.5	495.9	497.8	500.4	502.1	503.9
70°	460.5	460.8	461.9	462.0	463.6	464.5	466.6	467.8	470.1	471.6	473.7
72.5°	431.1	430.6	430.9	430.1	430.7	430.4	431.6	432.2	434.2	435.3	438.0
75°	399.6	398.3	398.0	396.5	396.6	395.6	396.1	396.0	397.3	397.9	399.8
77.5°	361.7	359.5	358.4	356.0	355.9	355.0	356.0	356.5	358.9	360.1	362.3
80°	316.3	312.8	311.2	308.4	308.9	308.8	311.1	312.9	315.8	316.2	319.0
82.5°	262.9	259.3	257.7	255.0	255.6	255.6	257.8	258.1	260.6	261.7	264.8
85°	188.2	189.6	185.8	186.1	185.3	186.8	188.2	190.1	192.1	195.6	198.2
87.5°	110.8	110.4	111.8	111.8	113.7	114.8	117.9	119.6	123.1	125.8	130.7
90°	87.3	83.8	83.0	80.7	80.8	78.5	78.8	76.5	77.1	76.0	77.3
92.5°	72.1	67.5	62.5	57.9	53.0	48.4	46.0	44.0	41.6	39.5	37.2
95°	98.8	91.7	84.7	77.8	70.8	63.8	61.3	58.7	56.1	53.6	51.0
97.5°	115.3	107.9	100.3	92.8	85.3	77.8	76.0	74.3	72.7	71.0	69.2
100°	167.5	153.0	138.5	123.9	109.4	94.9	93.5	92.2	90.8	89.5	88.0
102.5°	343.0	309.8	276.5	243.2	209.9	176.6	170.8	165.0	159.2	153.4	147.6
105°	633.7	580.4	527.1	473.9	420.6	367.3	351.5	335.5	319.7	303.8	287.9
107.5°	908.4	856.3	804.5	752.5	700.6	648.7	623.5	598.4	573.3	548.1	523.0
110°	1045.8	1014.7	983.6	952.4	921.3	890.2	866.2	842.3	818.2	794.4	770.5



TEST NUMBER: P1444726  
 CATALOG NUMBER: EHBR1-18-UNV-TA-L935-UPL30

**CANDELA DISTRIBUTION (continued):**

	55°	57.5°	60°	62.5°	65°	67.5°	70°	72.5°	75°	77.5°	80°
112.5°	1060.3	1044.8	1029.2	1013.7	998.2	982.7	971.1	959.4	947.8	936.1	924.5
115°	984.4	979.6	974.7	970.0	965.2	960.3	959.5	958.9	958.0	957.3	956.5
117.5°	858.8	859.9	860.9	862.1	863.3	864.4	870.7	877.0	883.4	889.7	896.3
120°	734.0	738.4	742.8	747.4	751.8	756.3	764.8	773.3	781.8	790.4	799.0
122.5°	629.4	632.5	635.7	639.0	642.2	645.4	653.8	662.3	670.8	679.3	688.0
125°	548.1	548.4	548.9	549.2	549.7	550.2	557.2	564.2	571.3	578.4	585.5
127.5°	491.9	490.2	488.8	487.3	485.7	484.3	488.5	492.9	497.1	501.5	505.7
130°	456.3	453.4	450.5	447.7	444.7	441.9	443.6	445.6	447.4	449.4	451.2
132.5°	433.8	430.4	427.0	423.5	420.1	416.7	417.0	417.2	417.5	417.7	418.2
135°	417.2	414.0	410.7	407.5	404.1	401.1	400.4	399.7	399.1	398.5	398.1
137.5°	404.3	401.9	399.2	396.8	394.2	391.7	390.5	389.7	388.6	387.8	387.0
140°	393.9	392.1	390.0	388.0	386.0	384.1	383.2	382.5	381.7	381.0	380.3
142.5°	385.0	383.6	382.2	380.7	379.3	377.9	377.0	376.3	375.7	374.9	374.2
145°	379.2	378.4	377.5	376.6	375.8	374.9	374.2	373.7	373.1	372.7	372.3
147.5°	371.1	370.8	370.2	369.8	369.2	368.7	368.3	368.2	367.7	367.5	367.2
150°	363.2	362.8	362.3	361.9	361.4	360.9	360.7	360.6	360.5	360.5	360.4
152.5°	353.5	353.2	352.7	352.3	351.8	351.4	351.3	351.3	351.2	351.1	350.9
155°	346.1	345.9	345.7	345.4	345.1	344.9	344.7	344.4	344.2	344.0	343.7
157.5°	340.9	340.7	340.4	340.2	340.0	339.7	339.5	339.3	339.1	338.9	338.6
160°	337.1	336.9	336.6	336.4	336.2	336.0	335.5	335.2	334.7	334.3	334.1
162.5°	335.4	335.2	334.8	334.4	334.0	333.6	333.3	333.2	332.9	332.7	332.4
165°	333.8	333.6	333.4	333.2	333.0	332.8	332.4	332.0	331.5	331.3	330.9
167.5°	334.4	334.3	334.1	333.9	333.6	333.4	333.1	332.7	332.4	331.9	331.5
170°	334.1	333.7	333.4	333.1	332.7	332.4	332.0	331.6	331.2	330.9	330.5
172.5°	335.5	335.3	335.0	334.7	334.3	334.1	333.7	333.4	333.1	332.7	332.5
175°	334.2	334.2	334.1	333.9	333.9	333.8	333.7	333.6	333.5	333.4	333.3
177.5°	334.8	334.8	334.8	334.7	334.6	334.6	334.3	334.2	334.0	333.7	333.6
180°	332.8	332.8	332.8	332.8	332.8	332.8	332.8	332.8	332.8	332.8	332.8



TEST NUMBER: P1444726  
 CATALOG NUMBER: EHBR1-18-UNV-TA-L935-UPL30

**CANDELA DISTRIBUTION (continued):**

	82.5°	85°	87.5°	90°	92.5°	95°	97.5°	100°	102.5°	105°	107.5°
0°	14339.1	14339.1	14339.1	14339.1	14339.1	14339.1	14339.1	14339.1	14339.1	14339.1	14339.1
2.5°	14394.3	14390.7	14392.4	14385.6	14387.2	14379.1	14378.4	14369.2	14368.3	14359.6	14356.3
5°	14881.7	14873.7	14882.7	14868.6	14871.4	14853.0	14851.5	14827.8	14819.7	14789.9	14777.2
7.5°	15417.3	15414.3	15419.8	15408.0	15407.7	15391.3	15384.5	15363.3	15350.1	15319.0	15299.1
10°	15534.7	15537.4	15532.9	15534.0	15527.7	15525.9	15519.3	15515.2	15504.5	15496.4	15484.5
12.5°	15047.4	15050.3	15031.7	15043.5	15034.2	15055.9	15054.2	15079.8	15083.8	15116.1	15128.4
15°	13921.2	13917.8	13882.1	13904.5	13892.5	13940.2	13950.9	14015.1	14049.5	14131.8	14182.5
17.5°	12220.0	12210.9	12160.7	12188.0	12174.1	12244.4	12268.1	12370.7	12434.7	12567.5	12662.2
20°	10192.1	10174.5	10115.7	10147.8	10133.5	10213.3	10247.0	10371.1	10453.8	10629.6	10754.8
22.5°	8139.0	8111.2	8053.6	8083.5	8070.0	8152.8	8196.7	8321.2	8415.8	8596.4	8742.5
25°	6295.4	6270.5	6214.9	6235.9	6230.8	6300.9	6339.9	6457.6	6550.6	6722.6	6862.0
27.5°	4801.6	4775.8	4725.5	4740.4	4735.3	4794.9	4831.7	4930.1	5010.1	5154.9	5277.4
30°	3674.9	3643.8	3601.2	3609.4	3605.9	3654.2	3688.6	3771.4	3840.0	3962.4	4067.9
32.5°	2816.8	2785.6	2746.4	2750.3	2745.1	2783.1	2811.3	2883.4	2943.1	3047.2	3139.0
35°	2155.3	2191.8	2108.1	2161.1	2105.9	2186.9	2157.8	2202.8	2254.2	2341.9	2418.4
37.5°	1656.9	1631.4	1609.9	1607.6	1607.6	1626.2	1648.4	1691.8	1737.1	1802.4	1869.8
40°	1313.0	1295.1	1281.2	1280.2	1281.2	1294.5	1310.9	1340.9	1374.1	1420.9	1470.5
42.5°	1089.0	1077.2	1068.7	1068.2	1070.8	1080.3	1091.7	1109.4	1131.0	1161.5	1195.4
45°	942.6	936.0	931.3	931.0	932.3	937.1	943.7	954.8	968.5	987.4	1008.9
47.5°	839.8	838.2	835.3	835.4	834.0	836.0	836.8	843.0	850.3	864.5	892.7
50°	764.9	764.9	762.9	762.8	760.9	760.8	759.2	761.7	765.0	773.9	782.9
52.5°	705.8	705.6	703.4	702.9	701.0	700.9	699.5	700.4	700.9	705.4	710.7
55°	659.5	658.2	655.3	654.4	653.6	654.7	654.3	654.3	653.7	655.5	657.2
57.5°	626.4	624.6	621.8	621.1	620.8	622.3	622.3	621.8	619.3	617.7	615.2
60°	600.2	598.4	595.4	594.6	595.1	597.0	596.9	595.3	591.6	588.3	584.6
62.5°	574.3	573.6	572.2	571.9	571.5	571.9	570.5	568.8	565.2	561.7	557.7
65°	539.8	540.2	539.0	539.2	537.8	537.6	535.6	534.0	530.3	527.1	523.0
67.5°	503.8	504.1	503.2	503.2	502.6	502.7	501.4	499.8	496.8	494.1	491.0
70°	474.3	475.0	474.5	474.6	473.7	473.5	471.6	470.0	466.9	464.7	461.8
72.5°	438.8	440.4	440.3	440.7	439.5	438.8	436.5	434.7	431.8	430.1	427.7
75°	400.5	402.6	403.2	404.1	402.3	401.3	398.9	397.3	395.0	394.0	392.4
77.5°	363.2	365.4	367.6	369.7	366.7	364.2	361.0	358.6	355.2	353.9	351.5
80°	321.2	325.3	330.1	334.2	328.9	323.6	318.4	314.6	310.1	308.2	305.3
82.5°	266.6	270.6	273.4	276.1	272.4	268.5	263.5	260.1	255.2	253.4	250.0
85°	202.5	207.6	209.3	210.6	208.3	206.3	201.6	195.2	192.1	187.3	184.8
87.5°	133.1	136.2	136.9	137.3	135.9	134.9	131.9	128.9	123.6	119.8	115.1
90°	75.6	76.0	73.2	72.4	72.1	73.7	72.1	72.6	69.7	69.6	67.2
92.5°	35.0	32.6	30.5	28.2	30.6	32.7	35.1	37.2	39.5	41.6	44.0
95°	48.5	45.9	43.3	40.8	42.9	44.9	46.9	48.9	51.0	53.0	55.1
97.5°	67.5	65.9	64.2	62.4	63.6	64.8	66.0	67.2	68.4	69.6	70.8
100°	86.6	85.3	83.9	82.6	82.6	82.6	82.6	82.6	82.6	82.6	82.6
102.5°	141.7	135.9	130.1	124.3	128.2	132.1	136.1	140.0	143.9	147.8	151.9
105°	272.0	256.1	240.3	224.4	239.7	255.1	270.4	285.9	301.2	316.7	332.0
107.5°	497.9	472.9	447.8	422.7	450.7	478.7	506.6	534.6	562.6	590.7	618.7
110°	746.6	722.7	698.9	674.9	704.7	734.3	764.0	793.7	823.4	853.0	882.9



TEST NUMBER: P1444726  
 CATALOG NUMBER: EHBR1-18-UNV-TA-L935-UPL30

**CANDELA DISTRIBUTION (continued):**

	82.5°	85°	87.5°	90°	92.5°	95°	97.5°	100°	102.5°	105°	107.5°
112.5°	912.9	901.3	889.7	878.1	897.2	916.3	935.3	954.5	973.7	992.9	1011.9
115°	955.8	955.1	954.5	953.7	962.8	971.9	980.8	990.0	999.0	1008.1	1017.3
117.5°	902.6	909.0	915.5	922.0	924.9	927.8	930.8	933.7	936.7	939.6	942.7
120°	807.6	816.2	824.9	833.6	832.5	831.3	830.1	828.9	827.8	826.8	825.8
122.5°	696.5	705.1	713.8	722.5	720.0	717.4	714.8	712.4	709.9	707.5	705.1
125°	592.8	600.0	607.3	614.6	612.0	609.4	607.0	604.5	602.0	599.6	597.4
127.5°	510.3	514.8	519.2	523.8	522.6	521.4	520.3	519.2	518.1	517.2	516.2
130°	453.3	455.2	457.4	459.5	459.9	460.2	460.6	461.0	461.7	462.2	462.8
132.5°	418.6	419.1	419.6	420.2	421.5	422.9	424.4	425.9	427.5	429.1	430.8
135°	397.7	397.3	397.0	396.7	398.8	400.7	402.9	404.9	407.3	409.6	412.0
137.5°	386.2	385.4	384.8	384.1	386.2	388.2	390.4	392.5	394.7	397.1	399.6
140°	379.7	379.1	378.7	378.0	380.1	382.1	384.3	386.4	388.7	390.9	393.3
142.5°	373.7	373.0	372.6	372.1	374.0	375.9	377.8	379.8	381.8	383.9	386.1
145°	371.9	371.4	371.1	370.8	372.1	373.5	374.9	376.3	377.9	379.4	381.1
147.5°	367.0	366.7	366.6	366.4	367.4	368.4	369.5	370.5	371.7	372.8	374.1
150°	360.4	360.4	360.4	360.4	361.1	361.6	362.4	363.0	363.9	364.5	365.5
152.5°	351.0	350.9	351.0	351.0	351.7	352.3	353.0	353.6	354.4	355.0	355.8
155°	343.6	343.4	343.3	343.1	343.4	343.7	344.0	344.1	344.6	344.9	345.2
157.5°	338.5	338.3	338.2	338.0	338.1	338.1	338.2	338.2	338.3	338.4	338.6
160°	333.7	333.3	333.0	332.6	332.9	333.0	333.3	333.3	333.7	334.0	334.2
162.5°	332.3	332.1	331.9	331.7	331.6	331.4	331.3	331.1	331.0	330.9	330.8
165°	330.4	330.1	329.7	329.3	329.4	329.4	329.5	329.5	329.5	329.5	329.5
167.5°	331.3	330.8	330.5	330.1	329.8	329.5	329.2	328.8	328.6	328.4	328.2
170°	330.3	329.9	329.6	329.3	329.2	329.0	328.9	328.8	328.7	328.6	328.6
172.5°	332.3	331.9	331.6	331.4	331.3	331.1	331.1	331.0	330.9	330.9	330.8
175°	333.3	333.2	333.1	333.0	332.7	332.5	332.4	332.2	332.1	331.8	331.6
177.5°	333.3	333.2	333.0	332.8	332.7	332.7	332.7	332.7	332.7	332.6	332.6
180°	332.8	332.8	332.8	332.8	332.8	332.8	332.8	332.8	332.8	332.8	332.8



TEST NUMBER: P1444726  
 CATALOG NUMBER: EHBR1-18-UNV-TA-L935-UPL30

**CANDELA DISTRIBUTION (continued):**

	110°	112.5°	115°	117.5°	120°	122.5°	125°	127.5°	130°	132.5°	135°
0°	14339.1	14339.1	14339.1	14339.1	14339.1	14339.1	14339.1	14339.1	14339.1	14339.1	14339.1
2.5°	14347.1	14343.3	14333.3	14328.5	14319.3	14314.7	14307.5	14302.9	14297.1	14292.8	14290.5
5°	14744.6	14726.2	14689.5	14666.9	14627.2	14601.0	14561.5	14532.6	14491.9	14461.9	14423.4
7.5°	15261.8	15233.6	15186.5	15150.8	15095.3	15052.8	14990.5	14940.7	14871.8	14814.6	14744.3
10°	15472.3	15455.9	15434.8	15411.8	15381.0	15350.9	15308.3	15264.9	15207.1	15149.6	15074.4
12.5°	15161.1	15176.6	15207.1	15221.3	15244.6	15252.6	15263.2	15258.2	15248.8	15225.3	15191.3
15°	14279.8	14344.3	14446.3	14516.9	14615.8	14685.3	14777.2	14836.3	14904.4	14945.2	14983.8
17.5°	12829.9	12954.8	13134.9	13278.4	13471.3	13628.1	13820.3	13971.2	14145.4	14279.1	14421.4
20°	10972.9	11147.8	11396.4	11607.4	11886.9	12123.8	12427.3	12681.6	12978.3	13225.5	13492.4
22.5°	8974.3	9179.9	9464.8	9719.4	10053.0	10351.1	10731.4	11067.6	11468.7	11827.9	12225.3
25°	7088.8	7290.3	7580.4	7844.1	8204.4	8532.6	8948.2	9333.8	9799.2	10233.2	10731.4
27.5°	5471.9	5651.0	5905.9	6143.3	6473.2	6795.5	7217.1	7628.5	8125.1	8591.4	9128.3
30°	4225.8	4371.0	4575.4	4766.3	5031.2	5294.8	5670.4	6050.7	6544.9	7028.1	7578.6
32.5°	3274.8	3398.7	3569.3	3724.3	3928.4	4127.2	4403.8	4707.7	5141.2	5604.0	6136.3
35°	2535.1	2641.0	2786.2	2919.7	3087.6	3245.4	3451.8	3668.7	3999.5	4388.9	4865.2
37.5°	2021.1	2064.3	2167.9	2277.3	2416.7	2546.4	2707.8	2868.3	3104.9	3412.1	3801.2
40°	1537.0	1605.7	1690.0	1776.1	1881.6	1985.7	2162.8	2248.1	2403.9	2624.5	2926.4
42.5°	1240.2	1288.4	1347.8	1407.7	1481.2	1553.7	1643.3	1734.5	1851.0	2000.4	2215.2
45°	1037.8	1069.3	1107.5	1147.4	1195.7	1245.2	1305.2	1367.8	1446.8	1538.6	1669.1
47.5°	902.6	920.0	944.9	972.2	1005.4	1039.6	1078.6	1118.5	1167.5	1222.0	1296.3
50°	797.1	811.6	831.0	849.2	872.1	907.1	922.6	944.7	974.1	1006.2	1047.7
52.5°	720.7	730.4	742.6	753.1	767.5	780.6	797.8	813.1	833.5	852.7	879.5
55°	661.3	664.8	671.7	678.4	688.4	697.4	709.2	719.1	732.1	743.6	760.6
57.5°	615.3	615.7	618.8	622.4	628.8	634.4	642.6	649.1	658.1	665.4	675.6
60°	582.3	580.6	581.2	582.4	586.0	589.7	594.9	599.2	604.9	609.1	614.7
62.5°	554.9	552.1	551.5	551.1	553.0	554.3	557.1	559.2	562.4	564.2	567.3
65°	520.1	516.9	515.6	514.2	514.7	514.3	515.3	515.3	517.1	517.4	519.1
67.5°	488.7	486.0	484.3	482.3	481.4	480.0	479.4	478.0	477.7	476.5	476.3
70°	460.0	457.3	456.0	454.1	453.2	451.3	450.1	447.7	446.4	444.2	442.9
72.5°	426.8	425.3	424.9	423.6	423.3	422.3	421.7	420.1	419.2	417.3	416.2
75°	392.1	390.9	390.7	389.4	389.4	388.1	387.8	386.0	385.1	383.3	382.5
77.5°	350.7	348.9	348.4	346.9	347.3	346.7	347.2	345.9	345.3	343.4	342.9
80°	304.2	301.8	300.9	298.9	299.5	298.5	299.5	299.4	300.1	298.5	298.3
82.5°	249.1	246.4	246.0	244.6	245.5	245.6	247.6	246.5	247.0	245.6	246.2
85°	181.2	179.3	176.6	176.3	174.6	176.4	174.0	175.6	173.1	174.8	172.5
87.5°	112.4	108.4	106.3	103.5	102.4	99.8	98.6	96.7	97.2	96.3	96.9
90°	67.8	65.8	67.4	67.1	69.2	69.2	72.0	72.7	75.6	76.3	79.4
92.5°	46.0	48.2	52.2	56.5	60.5	64.6	68.6	72.9	76.9	81.1	85.1
95°	57.1	59.2	64.6	70.1	75.6	81.0	86.5	91.9	97.4	102.9	108.3
97.5°	72.0	73.1	78.6	84.1	89.5	95.0	100.5	106.0	111.5	117.0	122.4
100°	82.6	82.7	98.2	113.7	129.2	144.8	160.4	175.9	191.5	207.1	222.6
102.5°	155.8	159.7	198.9	238.3	277.5	316.8	356.0	395.3	434.6	473.9	513.3
105°	347.4	362.8	422.7	482.6	542.4	602.4	662.3	722.3	782.3	842.3	902.2
107.5°	646.7	674.8	729.0	783.1	837.1	891.3	945.6	999.7	1053.8	1108.0	1162.3
110°	912.6	942.3	978.6	1014.8	1051.1	1087.3	1123.7	1159.9	1196.3	1232.5	1268.9



TEST NUMBER: P1444726  
 CATALOG NUMBER: EHBR1-18-UNV-TA-L935-UPL30

**CANDELA DISTRIBUTION (continued):**

	110°	112.5°	115°	117.5°	120°	122.5°	125°	127.5°	130°	132.5°	135°
112.5°	1031.0	1050.3	1071.4	1092.5	1113.6	1134.7	1155.8	1177.0	1198.2	1219.3	1240.5
115°	1026.4	1035.6	1043.5	1051.9	1060.0	1068.2	1076.4	1084.7	1092.9	1101.2	1109.4
117.5°	945.6	948.7	949.8	951.1	952.3	953.5	954.9	956.2	957.5	958.9	960.2
120°	824.7	823.7	822.1	820.7	819.2	817.8	816.5	815.1	813.7	812.3	811.0
122.5°	702.6	700.3	698.9	697.4	696.2	694.8	693.4	692.2	690.9	689.6	688.3
125°	594.9	592.6	593.7	594.7	595.8	596.9	598.0	599.2	600.4	601.4	602.6
127.5°	515.2	514.4	517.3	520.3	523.4	526.4	529.4	532.5	535.5	538.6	541.6
130°	463.5	464.2	468.0	471.9	475.7	479.7	483.6	487.7	491.5	495.4	499.3
132.5°	432.4	434.3	437.9	441.7	445.4	449.2	452.9	456.7	460.4	464.3	467.9
135°	414.4	416.9	420.2	423.6	427.0	430.5	433.9	437.4	440.7	444.2	447.5
137.5°	401.9	404.4	407.0	409.8	412.4	415.2	417.9	420.7	423.3	426.1	428.7
140°	395.6	398.2	399.5	401.1	402.6	404.0	405.5	407.0	408.4	410.0	411.4
142.5°	388.2	390.5	391.4	392.3	393.2	394.2	395.1	396.0	396.8	397.6	398.5
145°	382.7	384.4	384.3	384.3	384.4	384.4	384.3	384.3	384.2	384.2	384.1
147.5°	375.3	376.6	376.2	376.0	375.8	375.5	375.3	374.9	374.6	374.4	374.0
150°	366.2	367.2	366.5	366.2	365.5	365.2	364.5	364.1	363.4	363.1	362.4
152.5°	356.5	357.4	356.6	356.3	355.6	355.0	354.4	353.9	353.2	352.7	352.1
155°	345.5	345.9	345.6	345.3	345.0	344.7	344.3	344.1	344.0	343.6	343.3
157.5°	338.7	338.8	338.6	338.4	338.2	338.1	338.0	337.9	337.8	337.7	337.7
160°	334.3	334.7	334.4	334.3	334.1	333.9	333.8	333.7	333.6	333.6	333.5
162.5°	330.6	330.6	330.4	330.2	330.1	330.0	329.8	329.8	329.8	329.7	329.7
165°	329.7	329.9	329.5	329.2	328.9	328.5	328.3	328.0	327.9	327.7	327.5
167.5°	327.9	327.7	327.7	327.8	327.8	327.9	327.9	328.2	328.2	328.4	328.5
170°	328.6	328.6	328.5	328.3	328.1	328.0	328.0	327.8	327.7	327.6	327.5
172.5°	330.8	330.8	330.4	330.1	329.8	329.5	329.2	328.9	328.6	328.4	328.0
175°	331.4	331.3	331.1	330.9	330.7	330.4	330.4	330.1	329.9	329.7	329.5
177.5°	332.5	332.4	332.4	332.4	332.4	332.3	332.3	332.3	332.3	332.3	332.2
180°	332.8	332.8	332.8	332.8	332.8	332.8	332.8	332.8	332.8	332.8	332.8



TEST NUMBER: P1444726  
 CATALOG NUMBER: EHBR1-18-UNV-TA-L935-UPL30

**CANDELA DISTRIBUTION (continued):**

	137.5°	140°	142.5°	145°	147.5°	150°	152.5°	155°	157.5°	160°	162.5°
0°	14339.1	14339.1	14339.1	14339.1	14339.1	14339.1	14339.1	14339.1	14339.1	14339.1	14339.1
2.5°	14287.6	14287.5	14286.1	14286.7	14287.0	14288.0	14289.3	14290.5	14290.8	14291.8	14292.0
5°	14394.6	14359.2	14333.1	14304.3	14282.7	14263.3	14250.3	14240.0	14236.0	14237.0	14239.4
7.5°	14684.5	14611.6	14551.4	14482.9	14425.9	14365.4	14315.3	14267.7	14233.0	14207.1	14192.7
10°	15002.7	14913.8	14828.8	14729.8	14635.8	14535.5	14444.7	14353.3	14276.9	14210.8	14162.1
12.5°	15143.9	15081.0	15007.6	14914.1	14813.6	14697.8	14581.0	14455.8	14339.3	14231.1	14143.9
15°	14994.4	14994.5	14967.8	14922.9	14853.0	14760.6	14649.3	14518.7	14381.3	14241.0	14112.9
17.5°	14519.8	14609.4	14659.1	14690.7	14681.0	14647.0	14576.1	14475.8	14347.7	14198.4	14042.0
20°	13704.9	13916.0	14066.7	14202.1	14277.9	14328.3	14323.4	14282.5	14191.3	14064.2	13901.5
22.5°	12563.3	12917.7	13197.4	13458.3	13641.2	13790.0	13860.7	13890.8	13849.4	13760.9	13608.0
25°	11176.7	11658.7	12069.9	12469.1	12768.5	13025.8	13180.5	13289.4	13298.0	13251.8	13115.4
27.5°	9635.9	10204.8	10725.3	11255.8	11676.9	12046.8	12289.5	12467.2	12523.6	12516.1	12392.2
30°	8097.1	8694.3	9268.1	9886.7	10407.7	10880.3	11201.0	11441.2	11533.8	11551.5	11432.3
32.5°	6643.9	7232.8	7805.0	8451.7	9025.0	9566.7	9945.5	10230.8	10338.5	10363.9	10233.2
35°	5325.0	5868.3	6412.1	7038.8	7608.9	8169.7	8568.9	8867.7	8968.2	8985.2	8833.9
37.5°	4181.3	4644.2	5118.0	5680.3	6203.9	6730.6	7109.9	7390.7	7463.9	7459.4	7288.2
40°	3218.3	3578.2	3958.8	4421.8	4857.1	5302.4	5622.6	5854.7	5893.2	5864.7	5684.9
42.5°	2420.0	2679.8	2955.9	3301.5	3624.4	3957.7	4190.7	4363.0	4368.5	4323.5	4162.0
45°	1802.9	2056.5	2172.2	2381.2	2589.2	2810.8	2953.0	3059.5	3043.0	3003.4	2880.7
47.5°	1374.4	1471.9	1575.2	1704.8	1825.9	2077.4	2058.7	2229.8	2106.6	2190.5	2005.7
50°	1091.4	1145.9	1201.5	1270.3	1333.6	1399.4	1440.4	1471.1	1467.1	1453.9	1418.5
52.5°	928.5	945.4	972.8	1011.9	1047.3	1082.8	1106.2	1125.2	1125.6	1120.2	1102.4
55°	776.0	797.4	817.1	842.7	886.2	892.9	926.4	919.7	922.3	912.9	922.5
57.5°	684.2	696.6	707.8	723.0	735.6	750.3	758.9	767.2	766.4	764.6	755.5
60°	619.2	626.0	632.2	641.0	647.9	656.3	660.3	664.5	663.1	660.0	651.9
62.5°	569.0	573.3	576.8	582.6	586.8	591.9	594.0	595.8	594.0	591.0	583.9
65°	519.5	522.3	524.5	528.8	531.8	536.2	538.0	539.6	538.0	535.7	530.3
67.5°	474.9	475.2	474.9	476.7	477.6	480.3	481.1	482.3	480.4	478.4	473.7
70°	441.0	440.3	439.5	440.2	440.3	441.7	441.8	441.7	439.3	435.9	430.9
72.5°	414.6	414.2	413.6	414.1	414.1	415.3	414.9	414.4	411.6	408.2	403.2
75°	380.6	380.3	379.0	379.0	378.0	378.4	377.0	376.2	373.0	370.3	365.8
77.5°	340.8	340.1	338.2	337.5	335.5	334.7	332.1	330.8	327.6	325.4	321.6
80°	296.3	295.6	293.2	291.9	288.8	286.7	282.9	280.7	277.1	274.9	271.2
82.5°	244.9	245.2	242.8	241.2	236.6	233.1	227.9	225.2	221.1	219.1	215.3
85°	174.2	171.7	173.0	172.9	170.0	167.0	162.9	160.0	156.5	154.5	151.8
87.5°	95.5	96.2	95.4	94.9	92.8	91.3	88.1	86.4	83.8	82.7	80.6
90°	74.2	71.5	66.5	63.8	59.0	55.5	50.1	46.9	41.9	40.5	37.7
92.5°	80.5	75.9	71.3	66.6	62.2	57.6	52.9	48.3	43.7	42.1	40.6
95°	101.7	95.1	88.5	81.8	75.1	68.4	61.9	55.2	48.6	47.2	45.9
97.5°	114.7	106.9	99.0	91.1	83.3	75.4	67.6	59.8	51.9	51.1	50.2
100°	204.5	186.5	168.4	150.4	132.3	114.3	96.2	78.1	60.1	59.1	58.0
102.5°	469.4	425.5	381.8	338.0	294.2	250.3	206.6	162.8	119.0	112.7	106.4
105°	835.9	769.5	703.3	637.1	570.6	504.4	438.1	371.7	305.4	284.1	262.7
107.5°	1099.9	1037.5	975.2	912.9	850.5	788.2	725.8	663.4	601.0	563.6	526.1
110°	1219.3	1169.8	1120.4	1070.8	1021.3	971.8	922.3	872.7	823.2	790.8	758.6



TEST NUMBER: P1444726  
 CATALOG NUMBER: EHBR1-18-UNV-TA-L935-UPL30

**CANDELA DISTRIBUTION (continued):**

	137.5°	140°	142.5°	145°	147.5°	150°	152.5°	155°	157.5°	160°	162.5°
112.5°	1204.1	1167.8	1131.6	1095.1	1059.0	1022.5	986.2	949.7	913.4	893.7	874.0
115°	1087.5	1065.7	1043.6	1021.7	999.8	977.7	955.8	933.8	911.8	901.3	890.8
117.5°	948.9	937.6	926.3	914.9	903.6	892.2	880.9	869.5	858.1	854.4	850.6
120°	807.5	804.0	800.3	796.7	793.1	789.5	785.8	782.2	778.4	778.7	779.0
122.5°	689.4	690.4	691.5	692.4	693.6	694.5	695.7	696.5	697.6	700.0	702.7
125°	605.6	608.5	611.6	614.5	617.4	620.3	623.4	626.1	629.1	631.6	634.2
127.5°	545.1	548.3	551.7	554.9	558.4	561.7	565.0	568.3	571.5	573.8	576.2
130°	502.2	505.0	507.9	510.6	513.6	516.3	519.1	522.0	524.8	526.5	528.1
132.5°	470.6	473.0	475.6	478.0	480.5	483.0	485.6	488.0	490.6	491.7	493.0
135°	449.4	451.1	453.0	454.7	456.7	458.4	460.2	462.0	463.9	464.7	465.3
137.5°	430.1	431.6	433.0	434.4	435.9	437.3	438.8	440.4	441.9	442.0	442.3
140°	412.9	414.5	416.0	417.6	419.3	420.8	422.5	424.2	425.9	426.0	426.3
142.5°	399.7	400.9	402.0	403.2	404.5	405.8	407.0	408.4	409.7	409.8	410.0
145°	385.6	387.0	388.6	390.1	391.5	393.1	394.8	396.4	398.1	398.1	398.2
147.5°	375.3	376.6	377.9	379.2	380.6	381.8	383.3	384.7	386.3	386.2	386.2
150°	363.9	365.3	366.7	368.1	369.6	371.1	372.7	374.3	375.9	376.2	376.5
152.5°	353.6	355.2	356.7	358.4	360.1	361.7	363.5	365.3	367.0	367.2	367.5
155°	344.9	346.4	348.0	349.7	351.3	352.9	354.6	356.3	358.0	358.5	358.8
157.5°	339.1	340.3	341.9	343.3	344.8	346.2	347.8	349.3	350.8	351.2	351.5
160°	334.8	336.1	337.3	338.5	339.9	341.1	342.5	343.9	345.1	345.5	345.8
162.5°	330.9	332.2	333.5	334.6	336.0	337.2	338.6	339.9	341.1	341.4	341.8
165°	328.4	329.3	330.2	331.1	332.0	332.9	333.8	334.7	335.7	336.1	336.5
167.5°	329.3	329.8	330.5	331.3	332.0	332.6	333.4	334.1	334.9	335.3	335.7
170°	328.3	328.8	329.5	330.2	330.8	331.4	332.2	332.7	333.5	333.9	334.3
172.5°	328.5	328.8	329.3	329.6	330.1	330.5	331.0	331.4	331.9	332.4	332.9
175°	329.8	330.0	330.3	330.4	330.5	330.8	331.1	331.4	331.6	332.0	332.4
177.5°	332.4	332.5	332.7	332.9	333.1	333.3	333.4	333.6	333.9	334.4	334.9
180°	332.8	332.8	332.8	332.8	332.8	332.8	332.8	332.8	332.8	332.8	332.8



TEST NUMBER: P1444726  
 CATALOG NUMBER: EHBR1-18-UNV-TA-L935-UPL30

**CANDELA DISTRIBUTION (continued):**

	165°	167.5°	170°	172.5°	175°	177.5°	180°	182.5°	185°	187.5°	190°
0°	14339.1	14339.1	14339.1	14339.1	14339.1	14339.1	14339.1	14339.1	14339.1	14339.1	14339.1
2.5°	14291.5	14291.4	14290.9	14290.3	14289.6	14290.0	14290.6	14292.3	14295.2	14299.3	14304.7
5°	14241.4	14244.3	14246.0	14246.1	14244.7	14243.8	14245.1	14249.1	14257.0	14270.2	14288.3
7.5°	14188.8	14192.4	14197.9	14202.1	14202.8	14201.8	14202.1	14208.2	14222.8	14248.7	14285.0
10°	14132.6	14121.9	14127.6	14137.8	14146.1	14147.5	14148.5	14155.8	14177.2	14216.3	14274.6
12.5°	14080.7	14046.9	14040.4	14049.7	14062.1	14066.1	14065.0	14068.1	14093.1	14144.9	14226.2
15°	14012.5	13948.9	13927.1	13929.6	13944.9	13950.4	13946.4	13940.2	13964.6	14027.8	14132.9
17.5°	13902.1	13799.5	13759.5	13757.8	13775.7	13780.6	13770.7	13751.6	13775.6	13854.4	13984.9
20°	13734.1	13582.8	13507.6	13495.6	13515.1	13509.4	13489.7	13460.8	13492.3	13588.2	13743.5
22.5°	13432.3	13240.6	13112.0	13070.5	13093.8	13078.3	13049.5	13012.6	13054.6	13163.5	13336.5
25°	12939.2	12717.5	12541.6	12442.8	12461.4	12433.5	12402.2	12357.4	12407.5	12532.5	12722.9
27.5°	12214.3	11958.3	11740.2	11576.7	11582.8	11546.2	11510.2	11452.2	11514.6	11662.6	11877.4
30°	11250.4	10954.2	10688.6	10466.5	10446.5	10411.1	10374.2	10298.2	10376.3	10553.5	10804.3
32.5°	10040.0	9711.0	9404.2	9123.3	9070.3	9035.6	9002.7	8915.3	9017.6	9224.2	9512.5
35°	8624.4	8274.0	7941.3	7620.4	7532.7	7498.1	7469.3	7385.5	7513.1	7738.0	8049.3
37.5°	7070.5	6712.5	6382.2	6053.3	5929.2	5882.3	5861.4	5806.5	5953.8	6176.1	6488.7
40°	5475.3	5142.5	4846.3	4555.8	4414.4	4342.6	4331.6	4321.6	4464.0	4656.9	4940.7
42.5°	3983.1	3714.6	3486.2	3264.1	3136.0	3037.9	3037.9	3067.7	3195.8	3340.4	3559.2
45°	2755.2	2575.1	2429.5	2281.1	2320.8	2125.3	2240.2	2181.3	2244.6	2337.8	2480.0
47.5°	1894.0	1795.6	1715.7	1632.8	1572.3	1514.7	1519.6	1556.9	1616.5	1671.8	1745.9
50°	1380.3	1330.3	1289.5	1246.5	1216.5	1191.0	1192.5	1208.6	1239.9	1269.0	1307.7
52.5°	1081.6	1054.0	1031.9	1008.0	992.2	979.7	980.3	988.2	1005.1	1021.7	1043.9
55°	891.6	888.2	859.4	838.1	829.9	821.4	822.9	826.0	837.5	847.3	862.0
57.5°	747.1	734.1	725.5	714.3	709.1	703.2	704.5	705.7	713.4	719.9	730.5
60°	645.1	636.0	629.8	622.2	618.8	615.0	615.9	616.6	621.5	625.7	633.3
62.5°	577.3	569.2	563.8	557.9	555.6	553.0	553.6	553.8	556.8	560.0	565.7
65°	525.4	518.9	514.4	509.4	506.9	504.2	504.5	504.5	507.1	509.4	513.7
67.5°	470.4	465.5	462.7	458.6	456.9	454.3	454.2	453.3	455.0	455.9	458.9
70°	426.3	421.4	417.7	413.8	411.7	409.3	409.4	409.4	411.4	413.5	417.2
72.5°	399.1	394.3	391.1	387.6	385.6	383.6	383.3	383.0	384.5	385.6	388.1
75°	363.0	359.2	357.3	354.1	352.5	350.2	349.8	348.8	349.5	349.7	351.6
77.5°	319.2	315.6	314.0	310.9	309.5	306.9	306.7	305.5	306.1	305.7	307.2
80°	269.3	266.0	265.2	262.6	261.9	259.5	259.1	257.7	258.1	257.0	257.5
82.5°	213.6	210.6	210.0	207.5	207.5	205.4	205.2	203.0	203.0	201.2	198.2
85°	150.5	148.3	147.4	145.4	144.7	143.0	142.1	140.0	139.3	137.9	137.5
87.5°	79.4	78.0	76.8	75.9	74.0	71.0	70.7	68.5	68.7	67.2	67.2
90°	36.4	33.8	32.7	30.3	28.9	26.9	25.8	26.6	27.7	28.6	29.8
92.5°	39.1	37.5	36.1	34.5	33.0	31.4	29.9	31.4	33.0	34.5	36.1
95°	44.5	43.1	41.8	40.4	39.1	37.7	36.3	37.7	39.1	40.4	41.8
97.5°	49.4	48.5	47.7	46.8	46.0	45.0	44.2	45.1	46.0	46.9	47.8
100°	57.0	56.0	54.9	53.9	52.9	51.8	50.8	51.9	53.0	54.0	55.0
102.5°	100.1	93.7	87.5	81.1	74.8	68.5	62.2	68.5	74.8	81.2	87.6
105°	241.4	220.2	198.8	177.5	156.3	134.9	113.6	134.9	156.3	177.5	198.9
107.5°	488.5	451.1	413.6	376.0	338.4	300.9	263.4	301.0	338.5	376.1	413.6
110°	726.2	693.8	661.4	629.1	596.6	564.3	531.8	564.4	596.7	629.2	661.6



TEST NUMBER: P1444726  
 CATALOG NUMBER: EHBR1-18-UNV-TA-L935-UPL30

**CANDELA DISTRIBUTION (continued):**

	165°	167.5°	170°	172.5°	175°	177.5°	180°	182.5°	185°	187.5°	190°
112.5°	854.3	834.6	814.9	795.2	775.5	755.7	735.9	755.8	775.6	795.5	815.2
115°	880.5	870.0	859.6	849.0	838.6	828.1	817.5	828.3	838.9	849.4	860.0
117.5°	846.9	843.2	839.4	835.6	831.8	828.0	824.1	828.1	832.1	836.1	839.9
120°	779.2	779.4	779.7	779.9	780.1	780.3	780.3	780.4	780.4	780.4	780.3
122.5°	705.1	707.7	710.0	712.6	715.0	717.5	719.7	717.6	715.4	713.3	710.9
125°	636.8	639.3	641.9	644.4	646.8	649.4	651.7	649.7	647.5	645.2	642.9
127.5°	578.4	580.7	582.9	585.1	587.3	589.3	591.4	589.7	587.8	585.9	583.9
130°	529.7	531.5	532.9	534.6	536.1	537.5	538.9	537.8	536.6	535.5	534.2
132.5°	493.9	495.2	496.3	497.5	498.4	499.5	500.2	499.7	499.0	498.5	497.6
135°	466.0	466.8	467.2	467.9	468.5	468.9	469.3	469.3	469.1	468.9	468.6
137.5°	442.5	442.7	442.8	442.8	442.9	442.9	442.7	443.3	443.6	444.0	444.2
140°	426.4	426.6	426.9	426.9	427.0	427.1	426.9	427.4	427.7	428.1	428.2
142.5°	410.3	410.5	410.6	410.7	410.7	410.7	410.6	411.1	411.5	411.7	412.0
145°	398.1	398.1	398.1	398.0	397.8	397.6	397.2	398.0	398.4	399.0	399.5
147.5°	386.2	386.1	386.1	385.9	385.7	385.6	385.3	385.9	386.4	386.9	387.5
150°	376.8	377.0	377.3	377.5	377.6	377.7	377.7	378.0	378.3	378.5	378.7
152.5°	367.7	367.9	368.2	368.3	368.4	368.4	368.4	368.8	369.1	369.4	369.6
155°	359.2	359.5	359.8	360.2	360.4	360.6	360.8	361.1	361.2	361.4	361.4
157.5°	351.8	352.2	352.5	352.7	352.9	353.3	353.5	353.7	353.9	354.1	354.3
160°	346.0	346.4	346.7	346.9	347.2	347.5	347.7	347.9	348.2	348.3	348.6
162.5°	342.0	342.3	342.5	342.8	343.0	343.3	343.6	343.9	344.0	344.2	344.4
165°	337.0	337.4	337.7	338.2	338.6	339.1	339.4	339.5	339.5	339.5	339.5
167.5°	336.1	336.5	336.8	337.2	337.5	338.0	338.4	338.4	338.4	338.4	338.3
170°	334.6	335.1	335.3	335.7	336.1	336.4	336.7	336.7	336.7	336.7	336.7
172.5°	333.3	333.9	334.3	334.9	335.3	335.8	336.2	336.2	335.9	335.7	335.4
175°	332.7	333.3	333.7	334.2	334.5	335.0	335.4	335.1	334.9	334.7	334.4
177.5°	335.5	336.2	336.7	337.2	337.8	338.2	338.9	338.3	338.0	337.4	336.9
180°	332.8	332.8	332.8	332.8	332.8	332.8	332.8	332.8	332.8	332.8	332.8



TEST NUMBER: P1444726  
 CATALOG NUMBER: EHBR1-18-UNV-TA-L935-UPL30

**CANDELA DISTRIBUTION (continued):**

	192.5°	195°	197.5°	200°	202.5°	205°	207.5°	210°	212.5°	215°	217.5°
0°	14339.1	14339.1	14339.1	14339.1	14339.1	14339.1	14339.1	14339.1	14339.1	14339.1	14339.1
2.5°	14312.4	14319.5	14330.5	14340.4	14355.3	14367.1	14384.9	14398.3	14418.2	14431.3	14453.0
5°	14313.7	14341.7	14378.5	14414.4	14457.6	14496.8	14545.6	14587.1	14636.0	14676.0	14726.1
7.5°	14333.9	14387.9	14452.6	14517.9	14591.6	14660.6	14738.3	14808.7	14885.5	14950.7	15021.8
10°	14348.8	14432.1	14527.5	14623.4	14724.5	14818.4	14913.1	14995.0	15071.5	15134.5	15190.2
12.5°	14328.6	14443.4	14565.7	14683.9	14796.3	14893.3	14974.9	15037.9	15081.3	15110.9	15117.8
15°	14259.7	14397.9	14530.9	14648.6	14741.8	14813.8	14850.9	14868.3	14849.7	14818.6	14750.4
17.5°	14131.2	14276.9	14395.8	14488.7	14537.9	14557.5	14526.6	14473.0	14368.2	14251.8	14083.9
20°	13895.6	14031.2	14117.5	14168.2	14155.0	14106.2	13989.8	13848.3	13639.2	13416.2	13121.9
22.5°	13482.1	13600.7	13646.7	13650.5	13570.1	13448.0	13238.1	12995.5	12665.4	12322.3	11900.3
25°	12861.6	12965.5	12972.7	12932.0	12784.8	12587.0	12278.9	11935.5	11487.1	11029.8	10501.0
27.5°	12020.0	12119.6	12095.2	12019.1	11814.8	11550.3	11155.6	10712.2	10159.2	9619.2	9034.2
30°	10962.1	11068.6	11040.0	10942.3	10699.4	10386.6	9922.2	9407.1	8793.2	8216.4	7623.6
32.5°	9696.1	9830.8	9811.0	9718.2	9464.6	9130.0	8626.1	8079.7	7451.6	6883.2	6306.5
35°	8257.1	8420.7	8429.1	8368.4	8133.0	7802.2	7304.7	6775.8	6174.2	5637.9	5105.2
37.5°	6706.7	6896.3	6935.3	6918.9	6723.9	6431.9	5978.5	5504.0	4971.1	4501.1	4045.5
40°	5147.9	5339.7	5406.3	5426.1	5282.2	5056.0	4683.9	4301.0	3866.5	3485.7	3123.8
42.5°	3726.2	3896.3	3960.7	4001.2	3911.3	3760.5	3489.1	3210.9	2892.6	2617.9	2354.6
45°	2587.9	2708.3	2757.2	2797.9	2749.0	2664.0	2492.6	2318.6	2108.5	1928.9	1759.0
47.5°	1809.3	1875.7	1908.0	1927.8	1908.8	1864.5	1771.1	1670.5	1551.8	1447.0	1346.1
50°	1341.1	1376.4	1393.4	1404.8	1390.9	1366.3	1315.8	1261.0	1195.8	1136.4	1078.4
52.5°	1062.8	1083.1	1093.1	1099.3	1091.3	1076.3	1046.9	1014.4	975.3	938.6	919.3
55°	895.4	894.3	917.5	906.3	917.5	892.5	887.2	851.5	819.0	796.2	771.5
57.5°	738.4	748.9	753.3	758.3	755.1	750.5	738.0	725.2	708.1	693.8	678.6
60°	639.1	647.8	652.7	657.6	657.4	655.6	648.4	640.8	630.1	621.5	612.2
62.5°	570.8	578.3	583.1	587.8	588.3	587.6	582.1	576.8	569.5	564.2	557.8
65°	517.1	522.3	525.6	529.4	529.1	528.1	523.2	518.8	512.8	509.1	504.4
67.5°	460.8	464.8	467.3	470.8	471.6	471.7	469.0	466.9	464.0	463.0	461.4
70°	420.7	425.5	429.7	434.1	436.6	437.8	436.6	435.6	433.9	433.1	431.9
72.5°	390.4	394.5	397.7	401.8	404.1	405.8	404.9	404.2	402.8	402.6	401.7
75°	352.8	355.6	357.5	360.5	361.7	363.3	362.6	363.0	362.4	363.6	363.6
77.5°	307.6	309.7	310.5	312.8	313.0	314.9	315.2	317.4	318.9	322.4	324.2
80°	256.7	258.0	258.0	260.3	261.3	264.5	265.9	269.5	271.2	274.2	274.4
82.5°	199.4	197.9	199.4	198.4	201.4	204.8	205.4	208.4	209.1	211.0	209.5
85°	136.3	136.2	135.0	135.2	134.3	134.7	134.2	134.8	134.2	134.3	132.9
87.5°	65.3	65.9	64.4	65.0	63.5	64.2	63.0	63.9	62.5	62.7	60.5
90°	30.7	31.8	32.9	34.0	35.3	38.2	41.2	44.2	47.4	50.2	53.3
92.5°	37.5	39.2	40.7	42.2	43.8	48.4	53.0	57.6	62.3	66.8	71.4
95°	43.1	44.5	45.9	47.3	48.7	55.3	62.0	68.6	75.3	81.9	88.6
97.5°	48.7	49.6	50.4	51.3	52.1	60.0	67.8	75.7	83.6	91.4	99.2
100°	56.2	57.2	58.2	59.3	60.3	78.4	96.4	114.6	132.6	150.7	168.8
102.5°	93.8	100.1	106.5	112.9	119.3	163.1	207.0	250.8	294.5	338.3	382.2
105°	220.3	241.6	263.0	284.4	305.7	372.0	438.5	504.8	571.1	637.4	703.8
107.5°	451.3	488.8	526.4	563.9	601.4	663.9	726.3	788.7	851.1	913.5	975.8
110°	694.1	726.4	759.0	791.3	823.8	873.3	923.0	972.5	1022.1	1071.6	1121.2



TEST NUMBER: P1444726  
 CATALOG NUMBER: EHBR1-18-UNV-TA-L935-UPL30

**CANDELA DISTRIBUTION (continued):**

	192.5°	195°	197.5°	200°	202.5°	205°	207.5°	210°	212.5°	215°	217.5°
112.5°	835.1	854.8	874.5	894.3	914.0	950.5	987.0	1023.4	1059.9	1096.1	1132.5
115°	870.6	881.0	891.6	902.1	912.7	934.8	956.7	978.8	1000.9	1022.8	1044.9
117.5°	843.8	847.7	851.5	855.3	859.1	870.5	882.0	893.5	904.9	916.3	927.7
120°	780.3	780.2	780.1	779.9	779.7	783.3	787.1	790.9	794.7	798.3	801.9
122.5°	708.7	706.2	703.9	701.4	699.1	698.1	697.2	696.2	695.3	694.3	693.4
125°	640.5	638.1	635.7	633.3	630.7	627.9	625.1	622.2	619.3	616.5	613.6
127.5°	582.0	579.9	577.9	575.7	573.5	570.3	567.0	563.7	560.6	557.2	553.9
130°	532.9	531.5	530.0	528.4	527.0	524.2	521.5	518.7	516.0	513.2	510.4
132.5°	496.8	495.9	495.0	493.9	493.0	490.4	488.1	485.6	483.2	480.7	478.4
135°	468.4	467.9	467.6	467.0	466.5	464.7	463.0	461.2	459.5	457.7	456.0
137.5°	444.5	444.6	444.6	444.6	444.6	443.2	441.7	440.4	439.0	437.6	436.2
140°	428.4	428.5	428.7	428.6	428.7	427.2	425.6	424.1	422.6	421.0	419.4
142.5°	412.2	412.4	412.5	412.5	412.6	411.4	410.3	409.1	407.9	406.8	405.6
145°	399.8	400.1	400.5	400.6	401.1	399.5	398.2	396.5	395.3	393.7	392.3
147.5°	387.8	388.2	388.6	388.8	389.3	388.0	386.8	385.6	384.5	383.1	382.0
150°	378.8	378.8	378.9	379.0	379.0	377.8	376.5	375.0	373.9	372.4	371.2
152.5°	369.7	369.9	370.1	370.1	370.3	369.0	367.5	366.1	364.6	363.1	361.7
155°	361.5	361.6	361.6	361.6	361.6	360.3	358.9	357.5	356.2	354.7	353.4
157.5°	354.4	354.5	354.6	354.6	354.6	353.5	352.3	351.0	349.8	348.7	347.5
160°	348.7	348.8	348.9	348.9	349.1	348.1	347.1	346.0	345.1	344.0	342.9
162.5°	344.6	344.8	344.9	344.9	345.0	344.0	343.1	342.0	341.1	340.0	339.0
165°	339.6	339.5	339.4	339.3	339.2	338.6	338.0	337.3	336.6	335.9	335.2
167.5°	338.4	338.3	338.2	338.2	338.1	337.5	337.2	336.6	336.1	335.6	335.1
170°	336.7	336.6	336.5	336.4	336.3	335.8	335.3	334.8	334.4	333.8	333.3
172.5°	335.2	334.9	334.7	334.4	334.2	333.8	333.4	333.2	332.9	332.5	332.2
175°	334.2	333.8	333.6	333.3	333.0	332.9	332.7	332.6	332.4	332.4	332.2
177.5°	336.5	336.1	335.5	335.1	334.6	334.4	334.3	334.2	334.1	334.0	333.8
180°	332.8	332.8	332.8	332.8	332.8	332.8	332.8	332.8	332.8	332.8	332.8



TEST NUMBER: P1444726  
 CATALOG NUMBER: EHBR1-18-UNV-TA-L935-UPL30

**CANDELA DISTRIBUTION (continued):**

	220°	222.5°	225°	227.5°	230°	232.5°	235°	237.5°	240°	242.5°	245°
0°	14339.1	14339.1	14339.1	14339.1	14339.1	14339.1	14339.1	14339.1	14339.1	14339.1	14339.1
2.5°	14466.5	14377.1	14365.3	14371.6	14386.5	14392.1	14408.1	14412.5	14428.8	14432.7	14448.3
5°	14764.9	14646.8	14652.7	14681.2	14724.1	14749.8	14792.0	14814.1	14854.5	14872.8	14909.2
7.5°	15079.7	14987.0	15015.9	15063.7	15122.6	15163.2	15214.0	15247.1	15290.8	15318.0	15352.9
10°	15234.2	15208.8	15240.6	15278.4	15311.9	15338.2	15359.7	15376.9	15388.1	15398.7	15403.3
12.5°	15116.7	15156.0	15161.3	15157.7	15135.5	15118.6	15080.4	15054.6	15008.6	14980.6	14925.9
15°	14680.6	14767.1	14719.2	14646.7	14540.7	14452.2	14327.3	14234.4	14104.3	14016.1	13885.6
17.5°	13915.5	14024.6	13899.9	13732.2	13518.8	13336.3	13109.0	12928.5	12702.6	12538.2	12327.3
20°	12838.3	12940.3	12717.8	12439.8	12109.7	11831.9	11504.4	11243.0	10938.6	10712.2	10438.9
22.5°	11497.2	11569.8	11256.3	10881.6	10461.0	10114.0	9722.4	9409.0	9061.7	8802.7	8511.3
25°	10013.5	10033.1	9657.0	9225.2	8756.5	8366.5	7948.4	7619.0	7264.7	7002.3	6716.4
27.5°	8515.9	8487.1	8080.7	7622.9	7129.8	6724.4	6316.7	6008.0	5697.6	5461.3	5214.9
30°	7102.4	7032.8	6610.8	6140.2	5661.6	5298.3	4959.7	4711.8	4464.9	4277.4	4079.7
32.5°	5806.2	5708.0	5297.2	4856.3	4453.1	4172.6	3921.6	3734.0	3534.7	3376.3	3210.3
35°	4658.1	4553.5	4189.6	3815.7	3510.6	3303.8	3106.5	2952.6	2783.4	2649.8	2505.6
37.5°	3672.8	3587.0	3282.2	2988.1	2757.2	2597.0	2435.4	2309.6	2169.8	2110.9	1956.9
40°	2835.4	2775.5	2537.1	2320.3	2146.9	2071.7	1907.6	1790.1	1685.5	1599.3	1515.8
42.5°	2211.6	2190.4	1958.5	1789.4	1667.3	1572.5	1481.0	1406.8	1334.5	1275.1	1219.0
45°	1623.1	1606.2	1503.2	1405.6	1322.4	1256.2	1194.4	1143.3	1096.0	1056.9	1021.3
47.5°	1263.9	1258.4	1199.2	1138.6	1086.2	1043.6	1003.6	969.7	938.3	912.1	903.6
50°	1028.0	1027.2	992.4	955.1	917.7	893.2	867.5	847.5	827.4	811.7	795.1
52.5°	873.4	869.6	846.1	823.0	800.9	784.8	768.4	755.6	742.3	732.6	722.3
55°	751.9	755.9	742.3	728.5	714.6	704.6	693.2	684.7	675.6	669.4	663.3
57.5°	667.5	672.8	665.7	657.8	649.4	642.8	634.9	629.1	622.9	619.0	615.5
60°	606.2	611.9	609.1	605.1	599.9	595.9	590.9	587.7	583.7	581.5	579.5
62.5°	554.0	561.2	560.2	558.4	555.0	552.9	550.1	548.6	546.1	545.1	544.2
65°	502.1	510.2	510.0	509.1	507.3	506.6	504.9	504.6	503.3	503.8	503.6
67.5°	461.2	468.2	469.8	470.9	470.8	471.3	471.1	471.8	471.8	472.8	473.5
70°	431.8	436.6	437.8	438.9	439.3	440.2	440.2	440.8	440.7	441.5	441.7
72.5°	402.0	408.4	409.5	410.5	410.5	411.4	410.9	410.7	409.5	409.2	408.3
75°	364.8	373.0	374.9	376.0	376.2	377.0	375.9	375.2	373.0	372.2	370.7
77.5°	326.1	334.6	335.9	336.3	335.6	335.8	333.4	331.9	329.2	328.1	326.6
80°	275.6	288.2	289.3	288.5	286.5	286.1	283.9	282.4	279.1	278.1	276.8
82.5°	209.7	224.5	226.6	227.5	225.9	226.3	224.1	223.2	220.2	219.8	217.8
85°	132.4	147.2	149.6	149.3	147.6	147.3	146.0	146.5	146.2	147.0	147.5
87.5°	60.8	75.1	78.6	77.5	77.3	76.3	74.0	74.9	76.2	77.1	77.2
90°	56.4	63.7	66.6	64.3	60.7	58.3	54.7	52.5	49.2	46.9	43.7
92.5°	76.0	80.7	85.3	81.2	77.1	73.0	68.9	64.7	60.7	56.5	52.5
95°	95.3	101.9	108.5	103.0	97.6	92.1	86.6	81.2	75.8	70.2	64.8
97.5°	107.1	114.8	122.6	117.2	111.7	106.1	100.7	95.2	89.7	84.3	78.8
100°	186.9	204.6	222.8	207.3	191.6	176.1	160.6	144.9	129.4	113.9	98.3
102.5°	425.9	469.6	513.3	474.1	434.8	395.5	356.3	316.9	277.7	238.4	199.1
105°	770.0	836.2	902.4	842.3	782.4	722.5	662.6	602.6	542.6	482.7	422.8
107.5°	1038.2	1100.2	1162.5	1108.3	1054.1	1000.0	945.7	891.6	837.4	783.2	729.1
110°	1170.7	1219.7	1269.2	1232.8	1196.5	1160.2	1123.9	1087.5	1051.3	1015.0	978.7



TEST NUMBER: P1444726  
 CATALOG NUMBER: EHBR1-18-UNV-TA-L935-UPL30

**CANDELA DISTRIBUTION (continued):**

	220°	222.5°	225°	227.5°	230°	232.5°	235°	237.5°	240°	242.5°	245°
112.5°	1168.9	1204.7	1240.9	1219.6	1198.4	1177.2	1156.1	1134.9	1113.9	1092.7	1071.6
115°	1066.8	1088.0	1109.9	1101.6	1093.3	1085.1	1076.7	1068.6	1060.2	1052.1	1043.9
117.5°	939.1	949.6	960.7	959.3	958.0	956.6	955.4	953.9	952.7	951.5	950.2
120°	805.6	808.3	811.6	813.0	814.3	815.7	817.1	818.3	819.7	821.1	822.6
122.5°	692.3	690.4	689.0	690.3	691.6	692.8	694.1	695.4	696.8	698.1	699.4
125°	610.7	606.6	603.3	602.2	601.1	599.9	598.8	597.5	596.5	595.5	594.5
127.5°	550.7	546.2	542.5	539.5	536.5	533.4	530.4	527.3	524.3	521.1	518.2
130°	507.7	503.5	500.4	496.4	492.7	488.6	484.7	480.9	476.9	472.9	469.1
132.5°	475.8	471.9	469.1	465.4	461.7	458.0	454.3	450.4	446.6	442.9	439.2
135°	454.2	450.9	448.8	445.4	442.1	438.7	435.2	431.9	428.5	425.0	421.7
137.5°	434.8	431.7	430.0	427.3	424.7	422.1	419.4	416.7	414.0	411.3	408.7
140°	417.9	414.6	412.7	411.4	410.0	408.5	407.1	405.7	404.3	402.9	401.3
142.5°	404.5	401.4	400.0	399.1	398.3	397.4	396.8	395.9	395.1	394.1	393.3
145°	390.8	387.4	385.6	385.6	385.8	385.8	385.9	386.0	386.1	386.1	386.2
147.5°	380.7	377.3	375.6	375.9	376.2	376.5	376.9	377.1	377.6	377.8	378.1
150°	369.7	365.9	363.9	364.5	365.0	365.6	366.1	366.7	367.2	367.8	368.3
152.5°	360.2	355.6	353.3	353.9	354.6	355.1	355.7	356.4	357.0	357.6	358.3
155°	351.8	346.9	344.6	344.8	345.0	345.3	345.6	345.9	346.3	346.6	347.0
157.5°	346.0	341.1	338.9	338.9	339.0	339.1	339.2	339.3	339.5	339.7	340.0
160°	341.8	336.9	334.8	334.8	334.9	335.0	335.1	335.1	335.3	335.4	335.7
162.5°	337.7	333.0	331.0	330.9	330.9	330.9	331.1	331.1	331.3	331.3	331.5
165°	334.4	330.4	328.6	328.8	329.1	329.2	329.5	329.7	330.0	330.3	330.6
167.5°	334.4	330.9	329.5	329.5	329.3	329.1	329.1	328.9	328.9	328.8	328.8
170°	332.7	329.8	328.6	328.7	328.9	328.9	329.0	329.1	329.2	329.3	329.5
172.5°	331.8	329.7	328.8	329.2	329.5	329.7	330.1	330.4	330.7	331.0	331.4
175°	332.0	330.7	330.4	330.4	330.5	330.7	330.9	331.0	331.2	331.4	331.7
177.5°	333.6	333.2	332.9	332.9	332.9	332.9	332.9	332.9	332.9	333.0	333.0
180°	332.8	332.8	332.8	332.8	332.8	332.8	332.8	332.8	332.8	332.8	332.8



TEST NUMBER: P1444726  
 CATALOG NUMBER: EHBR1-18-UNV-TA-L935-UPL30

**CANDELA DISTRIBUTION (continued):**

	247.5°	250°	252.5°	255°	257.5°	260°	262.5°	265°	267.5°	270°	272.5°
0°	14339.1	14339.1	14339.1	14339.1	14339.1	14339.1	14339.1	14339.1	14339.1	14339.1	14339.1
2.5°	14451.2	14468.1	14466.8	14482.5	14481.8	14496.6	14493.6	14506.4	14503.4	14514.4	14508.0
5°	14925.2	14957.3	14967.9	14996.8	15002.8	15028.7	15029.2	15049.8	15047.3	15063.4	15054.9
7.5°	15373.7	15403.6	15417.8	15440.3	15451.5	15470.1	15477.4	15492.7	15496.3	15505.4	15505.1
10°	15411.5	15411.4	15418.5	15415.3	15421.6	15417.9	15425.6	15422.8	15434.2	15431.3	15439.8
12.5°	14902.3	14851.7	14833.3	14787.9	14778.0	14739.1	14741.8	14716.9	14728.9	14713.5	14739.7
15°	13807.9	13690.7	13632.8	13530.9	13498.9	13418.3	13411.8	13358.3	13372.7	13344.7	13385.7
17.5°	12190.8	12006.2	11904.9	11756.1	11697.0	11583.1	11560.1	11491.3	11502.0	11467.2	11516.7
20°	10262.6	10039.6	9911.9	9739.7	9662.9	9527.1	9491.1	9414.0	9423.6	9389.1	9445.0
22.5°	8312.5	8079.0	7934.8	7754.4	7656.4	7528.6	7490.3	7412.9	7417.3	7384.9	7438.6
25°	6520.4	6296.6	6156.6	5992.7	5907.6	5790.5	5750.2	5680.8	5684.7	5657.9	5706.2
27.5°	5044.0	4860.4	4743.3	4605.9	4529.7	4433.3	4394.1	4335.6	4335.4	4315.8	4356.2
30°	3941.6	3788.4	3683.2	3563.6	3491.9	3405.1	3367.1	3314.8	3312.5	3298.6	3330.7
32.5°	3086.2	2949.9	2853.9	2748.7	2684.4	2609.9	2573.9	2531.8	2528.0	2515.4	2541.8
35°	2399.1	2284.3	2201.8	2113.2	2119.7	2009.8	2028.0	1942.5	1919.4	1914.3	1933.9
37.5°	1854.3	1765.3	1698.4	1631.9	1587.0	1540.5	1515.5	1493.0	1490.5	1488.3	1502.0
40°	1451.4	1389.1	1340.5	1294.9	1264.0	1235.6	1219.9	1207.6	1204.6	1203.0	1211.3
42.5°	1174.7	1132.6	1101.3	1073.5	1054.7	1039.3	1030.7	1023.8	1021.5	1021.5	1026.4
45°	992.4	967.0	946.8	929.4	917.5	922.7	907.2	915.3	904.6	915.7	908.3
47.5°	874.0	852.3	839.8	827.6	820.2	814.4	814.6	814.7	817.1	817.4	819.8
50°	782.6	770.0	761.3	753.5	749.7	746.6	747.7	748.5	750.7	750.9	752.6
52.5°	714.9	706.7	701.4	696.6	694.9	693.2	693.9	693.5	694.6	694.1	695.5
55°	659.9	656.0	654.4	652.6	652.8	652.3	652.6	650.9	649.8	648.5	649.7
57.5°	614.7	614.1	615.3	616.0	618.1	618.8	619.3	617.3	615.4	613.7	614.7
60°	579.9	580.8	583.5	585.8	588.8	590.1	590.9	589.7	588.4	586.9	587.8
62.5°	545.5	546.9	550.1	552.7	556.3	558.1	560.2	560.3	560.8	560.3	560.9
65°	505.7	507.4	510.4	512.4	515.8	517.4	519.5	519.9	521.0	520.8	521.8
67.5°	475.4	476.9	479.4	481.4	484.3	486.1	487.9	488.0	488.4	488.3	489.3
70°	443.1	443.8	446.1	447.7	450.7	452.4	454.6	455.2	456.5	456.8	457.8
72.5°	408.7	408.4	409.7	410.4	412.7	414.0	416.7	418.3	420.4	421.1	421.8
75°	371.1	370.9	372.4	373.0	374.9	376.4	379.4	381.4	384.8	386.3	385.8
77.5°	327.7	328.5	331.4	333.1	335.6	337.4	341.3	344.5	350.7	353.6	350.7
80°	279.1	280.0	283.0	284.6	287.9	290.0	294.5	298.1	303.8	305.1	303.4
82.5°	219.5	219.7	222.4	223.6	227.9	231.1	236.7	239.6	243.2	242.6	242.2
85°	149.6	151.6	155.2	158.6	163.9	169.0	174.3	178.6	175.6	180.4	174.9
87.5°	79.9	79.8	84.5	83.7	91.2	95.4	100.1	102.2	104.7	104.1	104.2
90°	41.7	39.6	38.7	36.5	36.0	33.7	33.5	31.4	31.4	29.0	32.4
92.5°	48.3	46.2	43.9	41.8	39.4	37.3	35.0	32.8	30.5	28.4	30.5
95°	59.4	57.3	55.3	53.1	51.1	49.0	47.0	45.0	43.0	40.9	43.4
97.5°	73.3	72.1	71.0	69.8	68.6	67.3	66.2	65.0	63.7	62.5	64.3
100°	82.8	82.8	82.8	82.8	82.7	82.7	82.7	82.7	82.7	82.7	84.1
102.5°	159.8	155.9	152.0	148.0	144.1	140.2	136.3	132.3	128.4	124.5	130.3
105°	362.9	347.6	332.1	316.8	301.4	286.0	270.6	255.3	239.9	224.6	240.4
107.5°	674.9	646.8	618.8	590.9	562.8	534.8	506.8	478.9	450.9	422.9	448.0
110°	942.5	912.7	883.0	853.3	823.6	793.9	764.2	734.5	704.9	675.1	699.1



TEST NUMBER: P1444726  
 CATALOG NUMBER: EHBR1-18-UNV-TA-L935-UPL30

**CANDELA DISTRIBUTION (continued):**

	247.5°	250°	252.5°	255°	257.5°	260°	262.5°	265°	267.5°	270°	272.5°
112.5°	1050.5	1031.2	1012.0	993.0	973.8	954.6	935.5	916.5	897.4	878.2	889.8
115°	1035.8	1026.6	1017.4	1008.4	999.3	990.2	981.0	972.0	963.0	953.9	954.6
117.5°	948.9	945.9	942.9	939.9	936.9	934.0	931.0	928.1	925.1	922.3	915.8
120°	824.1	825.0	826.0	827.1	828.2	829.4	830.4	831.6	832.7	833.9	825.2
122.5°	700.8	703.1	705.5	707.8	710.3	712.8	715.2	717.7	720.4	722.9	714.2
125°	593.3	595.5	597.9	600.3	602.5	605.1	607.5	610.1	612.6	615.2	607.9
127.5°	515.2	516.2	517.0	518.0	519.0	520.0	521.0	522.3	523.5	524.7	520.1
130°	465.2	464.5	463.8	463.2	462.6	462.1	461.6	461.2	460.9	460.5	458.4
132.5°	435.4	433.7	432.0	430.3	428.7	427.2	425.6	424.3	422.8	421.5	420.8
135°	418.3	415.8	413.5	411.0	408.8	406.5	404.3	402.2	400.2	398.2	398.5
137.5°	405.9	403.6	401.1	398.8	396.4	394.3	392.0	389.9	387.9	385.8	386.5
140°	400.0	397.4	395.1	392.7	390.5	388.3	386.2	384.1	381.9	380.0	380.5
142.5°	392.3	390.3	388.0	385.9	383.7	381.7	379.8	377.9	375.9	374.2	374.7
145°	386.2	384.6	383.0	381.4	379.9	378.4	376.9	375.5	374.1	373.0	373.2
147.5°	378.5	377.3	376.0	374.9	373.7	372.7	371.6	370.5	369.5	368.7	368.7
150°	368.9	368.2	367.3	366.6	365.8	365.1	364.4	363.7	363.1	362.5	362.4
152.5°	358.9	358.2	357.5	356.7	356.0	355.4	354.7	354.1	353.6	352.9	352.8
155°	347.4	347.0	346.7	346.4	346.0	345.9	345.5	345.4	345.1	344.9	344.9
157.5°	340.1	340.1	339.9	339.9	339.8	339.8	339.6	339.7	339.5	339.6	339.7
160°	336.0	335.7	335.4	335.3	335.1	334.8	334.5	334.4	334.3	334.1	334.3
162.5°	331.7	331.9	331.9	332.0	332.2	332.3	332.4	332.7	332.8	333.0	333.2
165°	331.0	330.8	330.7	330.5	330.5	330.5	330.4	330.5	330.4	330.4	330.8
167.5°	328.7	329.0	329.1	329.4	329.5	329.7	330.0	330.4	330.6	331.0	331.3
170°	329.5	329.5	329.5	329.5	329.5	329.6	329.7	329.7	329.8	329.9	330.2
172.5°	331.7	331.7	331.6	331.7	331.6	331.7	331.7	331.7	331.7	331.8	332.0
175°	331.7	332.1	332.3	332.4	332.6	332.7	332.9	333.1	333.3	333.4	333.4
177.5°	333.0	333.0	333.0	333.0	333.0	333.1	333.1	333.1	333.1	333.0	333.2
180°	332.8	332.8	332.8	332.8	332.8	332.8	332.8	332.8	332.8	332.8	332.8



TEST NUMBER: P1444726  
 CATALOG NUMBER: EHBR1-18-UNV-TA-L935-UPL30

**CANDELA DISTRIBUTION (continued):**

	275°	277.5°	280°	282.5°	285°	287.5°	290°	292.5°	295°	297.5°	300°
0°	14339.1	14339.1	14339.1	14339.1	14339.1	14339.1	14339.1	14339.1	14339.1	14339.1	14339.1
2.5°	14518.7	14511.4	14518.8	14511.3	14518.8	14509.8	14515.9	14506.2	14508.6	14498.5	14501.1
5°	15067.6	15056.0	15062.2	15047.1	15048.8	15028.7	15028.3	15004.9	14998.7	14972.1	14960.4
7.5°	15511.6	15507.7	15509.9	15500.2	15499.1	15485.4	15478.8	15459.5	15447.4	15422.8	15406.1
10°	15441.3	15452.6	15455.5	15467.1	15469.4	15480.9	15483.3	15494.7	15497.0	15505.6	15505.7
12.5°	14738.5	14776.9	14786.1	14833.5	14853.6	14907.8	14936.9	14996.8	15032.4	15092.0	15128.7
15°	13384.5	13451.0	13477.5	13570.2	13621.5	13729.7	13797.6	13921.8	14009.6	14141.5	14235.6
17.5°	11521.1	11614.0	11655.8	11781.6	11863.6	12023.3	12138.4	12327.8	12472.8	12683.4	12850.3
20°	9454.6	9557.9	9614.8	9758.2	9855.0	10041.5	10185.2	10418.1	10612.1	10878.9	11107.1
22.5°	7455.5	7553.7	7617.0	7762.8	7871.7	8066.3	8226.9	8472.7	8690.2	8990.9	9264.3
25°	5724.4	5814.5	5871.6	6003.5	6105.8	6284.7	6438.0	6674.3	6887.2	7188.7	7469.2
27.5°	4376.2	4451.6	4506.7	4619.2	4709.5	4861.1	4992.9	5188.2	5371.5	5632.5	5882.2
30°	3350.3	3417.2	3470.8	3568.8	3652.4	3783.9	3899.8	4063.8	4215.6	4423.2	4621.8
32.5°	2560.3	2617.8	2665.5	2751.3	2827.2	2945.6	3050.0	3193.7	3324.1	3500.1	3663.6
35°	1952.1	2065.3	2057.3	2175.6	2194.7	2279.6	2372.7	2498.5	2613.9	2763.5	2902.6
37.5°	1515.1	1547.0	1581.1	1633.4	1688.3	1765.6	1844.3	1997.9	2054.3	2167.4	2282.6
40°	1221.8	1243.3	1265.9	1301.2	1339.6	1394.1	1451.4	1524.7	1599.8	1691.6	1785.2
42.5°	1032.9	1045.1	1059.4	1080.3	1103.9	1138.4	1176.8	1226.4	1278.7	1343.3	1409.2
45°	922.9	917.1	921.4	932.5	946.8	967.8	992.0	1022.7	1056.8	1098.6	1143.1
47.5°	820.2	822.6	823.9	829.9	837.5	851.7	866.4	887.2	927.5	939.9	964.2
50°	752.5	753.6	753.3	756.3	760.2	769.4	778.9	793.0	807.1	825.8	843.7
52.5°	695.7	697.3	697.1	699.1	701.1	706.9	712.9	723.0	732.2	744.1	754.3
55°	650.8	653.0	653.8	655.5	656.5	659.6	662.0	666.8	670.7	677.5	683.6
57.5°	616.3	619.3	620.7	621.3	620.1	619.9	619.1	620.1	620.9	624.6	628.0
60°	589.2	591.6	591.9	591.6	589.4	587.8	585.2	584.4	583.9	585.8	587.7
62.5°	560.7	561.7	561.0	560.3	557.8	556.2	553.6	552.6	551.7	553.0	553.9
65°	521.4	522.1	521.4	521.0	518.7	517.5	515.2	514.5	513.3	513.5	513.3
67.5°	489.5	490.2	489.7	489.1	487.5	486.7	485.1	484.0	482.4	481.9	480.8
70°	457.7	458.2	457.3	456.8	455.0	454.3	452.7	452.4	451.2	450.9	449.7
72.5°	421.1	421.1	419.8	419.4	418.1	418.1	417.5	418.0	418.0	418.6	418.4
75°	383.6	383.0	381.5	381.2	380.2	380.7	379.9	380.8	381.0	382.4	382.6
77.5°	346.0	344.1	341.1	339.6	337.6	337.3	336.2	337.0	336.7	338.3	339.0
80°	298.6	296.3	292.4	290.6	288.1	287.8	286.7	287.8	287.2	289.1	290.4
82.5°	238.5	236.4	232.4	230.8	228.1	228.4	227.2	228.4	228.2	230.9	232.6
85°	176.4	175.0	170.8	167.2	163.1	160.7	158.3	158.0	157.2	158.3	159.3
87.5°	101.9	100.6	97.3	95.3	88.1	88.4	85.6	85.4	84.7	84.1	85.6
90°	33.2	36.3	37.1	40.0	41.0	44.1	45.4	48.5	49.7	53.1	54.7
92.5°	32.8	35.0	37.3	39.4	41.7	43.9	46.1	48.3	53.1	57.8	62.6
95°	46.0	48.6	51.1	53.7	56.2	58.8	61.4	63.9	70.9	77.9	84.8
97.5°	66.1	67.6	69.3	71.1	72.8	74.4	76.1	77.9	85.5	93.0	100.5
100°	85.5	86.8	88.2	89.6	91.0	92.4	93.7	95.1	109.7	124.2	138.7
102.5°	136.1	141.9	147.7	153.5	159.3	165.1	170.9	176.7	210.1	243.3	276.6
105°	256.3	272.2	288.0	304.0	319.8	335.7	351.7	367.5	420.7	474.0	527.3
107.5°	473.1	498.1	523.2	548.4	573.5	598.5	623.6	648.8	700.7	752.8	804.6
110°	722.9	746.8	770.7	794.7	818.5	842.4	866.4	890.4	921.6	952.6	983.8



TEST NUMBER: P1444726  
 CATALOG NUMBER: EHBR1-18-UNV-TA-L935-UPL30

**CANDELA DISTRIBUTION (continued):**

	275°	277.5°	280°	282.5°	285°	287.5°	290°	292.5°	295°	297.5°	300°
112.5°	901.4	913.0	924.7	936.3	948.0	959.7	971.4	983.1	998.6	1014.1	1029.6
115°	955.4	956.1	956.8	957.5	958.3	959.1	959.9	960.8	965.6	970.4	975.1
117.5°	909.4	902.9	896.5	890.1	883.8	877.4	871.2	864.9	863.7	862.6	861.6
120°	816.7	808.1	799.5	790.8	782.3	773.7	765.3	756.9	752.4	748.0	743.6
122.5°	705.7	697.1	688.4	679.8	671.4	662.9	654.6	646.2	643.0	639.8	636.6
125°	600.6	593.5	586.3	579.1	572.2	565.1	558.1	551.1	550.8	550.2	550.0
127.5°	515.6	511.2	506.7	502.5	498.2	493.9	489.7	485.4	487.0	488.6	490.1
130°	456.3	454.4	452.4	450.4	448.7	446.9	445.0	443.3	446.3	449.1	452.1
132.5°	420.4	420.0	419.6	419.3	419.0	418.7	418.6	418.3	421.7	425.2	428.5
135°	398.9	399.2	399.8	400.2	400.9	401.4	402.1	402.8	406.0	409.2	412.5
137.5°	387.2	388.0	388.8	389.6	390.6	391.5	392.5	393.5	396.1	398.5	401.1
140°	381.1	381.5	382.2	382.9	383.6	384.3	385.2	385.9	388.0	389.9	391.9
142.5°	375.3	375.7	376.3	377.0	377.8	378.4	379.1	379.8	381.2	382.7	384.2
145°	373.6	374.0	374.4	374.8	375.2	375.8	376.3	376.8	377.7	378.4	379.4
147.5°	368.9	369.1	369.3	369.6	370.0	370.2	370.4	370.7	371.2	371.7	372.2
150°	362.4	362.4	362.4	362.4	362.6	362.7	362.8	362.9	363.3	363.7	364.2
152.5°	352.9	352.8	352.8	352.9	353.0	353.0	353.0	353.1	353.6	353.9	354.4
155°	345.1	345.3	345.5	345.7	345.9	346.0	346.3	346.5	346.8	346.9	347.2
157.5°	339.9	340.0	340.2	340.4	340.6	340.8	341.1	341.1	341.4	341.6	341.8
160°	334.7	335.2	335.4	335.8	336.2	336.5	336.9	337.3	337.5	337.7	337.9
162.5°	333.3	333.5	333.8	334.0	334.2	334.3	334.5	334.7	335.2	335.4	335.9
165°	331.2	331.5	332.0	332.2	332.6	333.1	333.3	333.8	333.9	334.2	334.3
167.5°	331.7	332.0	332.4	332.7	333.1	333.4	333.8	334.2	334.3	334.4	334.7
170°	330.5	330.9	331.2	331.4	331.8	332.1	332.4	332.8	333.2	333.4	333.8
172.5°	332.3	332.5	332.8	333.0	333.3	333.6	333.9	334.2	334.5	334.8	335.1
175°	333.4	333.4	333.5	333.5	333.6	333.6	333.7	333.8	333.8	333.9	333.9
177.5°	333.3	333.5	333.7	333.8	334.0	334.2	334.3	334.5	334.5	334.5	334.5
180°	332.8	332.8	332.8	332.8	332.8	332.8	332.8	332.8	332.8	332.8	332.8



TEST NUMBER: P1444726  
 CATALOG NUMBER: EHBR1-18-UNV-TA-L935-UPL30

**CANDELA DISTRIBUTION (continued):**

	302.5°	305°	307.5°	310°	312.5°	315°	317.5°	320°	322.5°	325°	327.5°
0°	14339.1	14339.1	14339.1	14339.1	14339.1	14339.1	14339.1	14339.1	14339.1	14339.1	14339.1
2.5°	14490.9	14491.6	14479.9	14479.2	14468.3	14466.9	14456.2	14453.0	14444.3	14441.2	14432.4
5°	14930.6	14916.4	14883.5	14864.1	14831.6	14810.1	14774.9	14752.0	14718.0	14692.3	14658.2
7.5°	15375.2	15353.1	15316.1	15286.2	15241.2	15205.1	15152.4	15109.1	15052.0	15002.5	14942.4
10°	15505.7	15502.2	15492.8	15479.1	15458.2	15434.5	15398.6	15361.1	15311.1	15256.6	15189.9
12.5°	15184.7	15219.4	15266.7	15294.7	15328.7	15343.7	15357.7	15354.1	15345.0	15317.4	15278.8
15°	14371.9	14469.3	14598.2	14698.1	14813.0	14896.6	14988.9	15046.4	15103.7	15130.2	15146.4
17.5°	13079.0	13263.3	13494.4	13686.0	13907.1	14084.6	14279.2	14425.8	14576.4	14684.3	14782.0
20°	11418.0	11685.1	12012.1	12301.0	12636.8	12928.6	13248.4	13511.0	13781.8	13993.5	14193.9
22.5°	9616.6	9933.8	10329.1	10695.2	11128.2	11517.3	11956.3	12338.4	12737.4	13070.6	13392.9
25°	7845.1	8193.0	8625.2	9033.7	9524.1	9976.7	10497.3	10973.6	11489.2	11936.8	12379.1
27.5°	6227.5	6569.1	7010.3	7445.2	7963.7	8446.0	9003.8	9528.5	10115.6	10657.0	11210.8
30°	4898.0	5187.6	5583.3	6004.5	6516.0	7006.7	7570.6	8110.2	8721.0	9312.2	9936.0
32.5°	3880.5	4101.2	4412.3	4768.5	5240.3	5707.4	6244.4	6765.3	7366.8	7963.9	8612.8
35°	3081.9	3254.0	3491.2	3769.1	4168.7	4571.3	5046.3	5520.0	6081.2	6647.8	7278.5
37.5°	2430.2	2569.9	2755.6	2964.4	3284.9	3615.4	4004.8	4397.5	4885.1	5387.4	5959.0
40°	1897.8	2010.8	2155.4	2311.1	2553.1	2807.8	3109.0	3413.5	3805.2	4215.8	4688.8
42.5°	1490.8	1574.2	1676.3	1790.2	2015.9	2151.2	2355.4	2575.7	2863.6	3161.6	3517.3
45°	1197.3	1254.2	1325.0	1401.3	1506.1	1620.8	1760.6	1907.4	2180.9	2315.1	2531.4
47.5°	999.9	1038.0	1083.1	1131.2	1193.0	1259.7	1342.6	1427.5	1537.1	1650.8	1784.1
50°	866.9	905.7	921.2	946.1	981.8	1020.0	1066.7	1113.5	1172.3	1232.0	1300.6
52.5°	768.2	780.8	797.7	813.5	835.6	879.0	893.1	917.5	950.5	982.7	1018.8
55°	692.8	701.0	712.0	721.5	734.9	747.8	766.3	782.5	804.5	823.9	847.9
57.5°	634.2	639.4	647.0	653.3	662.0	669.1	680.0	688.8	701.5	712.5	727.0
60°	591.6	595.0	600.2	604.2	609.8	613.5	618.9	623.0	629.7	635.3	643.4
62.5°	556.8	558.6	561.8	564.3	567.8	569.7	572.5	574.3	578.1	580.9	585.4
65°	515.0	515.3	517.6	518.6	521.4	522.4	524.8	525.6	528.6	530.7	534.6
67.5°	480.7	479.8	479.8	479.0	479.4	478.6	478.8	478.0	479.2	479.8	482.9
70°	449.4	448.2	447.7	446.3	445.8	444.4	443.9	442.7	442.5	442.0	443.1
72.5°	419.0	418.6	418.7	417.7	417.6	416.6	416.7	416.1	416.7	417.1	418.5
75°	384.0	384.1	384.8	383.9	384.2	383.3	383.6	382.8	383.3	383.1	384.5
77.5°	341.4	342.4	344.2	343.9	344.5	343.5	344.0	342.9	343.1	342.4	343.0
80°	293.5	295.6	298.1	298.0	299.0	298.4	299.3	298.3	298.6	297.4	297.1
82.5°	236.6	238.4	241.0	241.1	243.4	243.9	246.4	246.3	248.0	247.0	246.2
85°	161.7	163.0	165.3	166.6	168.9	170.4	172.9	173.9	172.1	175.5	172.8
87.5°	84.5	87.6	85.8	89.9	89.0	93.1	92.2	96.1	95.3	98.6	98.2
90°	58.6	60.5	64.5	66.4	71.1	73.3	73.3	70.6	70.4	67.8	67.6
92.5°	67.3	72.2	77.0	81.8	86.6	91.4	86.9	82.5	78.0	73.7	69.2
95°	91.8	98.9	105.9	112.8	119.8	126.8	119.3	111.8	104.4	96.9	89.4
97.5°	108.0	115.5	123.0	130.5	138.0	145.6	136.7	127.8	118.9	110.1	101.3
100°	153.2	167.7	182.2	196.7	211.3	225.8	209.3	192.8	176.2	159.6	143.1
102.5°	310.0	343.2	376.6	409.8	443.1	476.5	441.3	406.2	371.1	336.1	300.9
105°	580.6	634.0	687.2	740.5	793.8	847.1	790.2	733.2	676.4	619.5	562.5
107.5°	856.6	908.6	960.6	1012.5	1064.5	1116.5	1058.8	1001.0	943.3	885.5	827.8
110°	1015.1	1046.2	1077.4	1108.6	1139.8	1171.1	1128.8	1086.7	1044.5	1002.2	960.1



TEST NUMBER: P1444726  
 CATALOG NUMBER: EHBR1-18-UNV-TA-L935-UPL30

**CANDELA DISTRIBUTION (continued):**

	302.5°	305°	307.5°	310°	312.5°	315°	317.5°	320°	322.5°	325°	327.5°
112.5°	1045.1	1060.7	1076.2	1091.8	1107.4	1122.9	1092.7	1062.6	1032.3	1002.1	971.8
115°	980.0	984.8	989.7	994.5	999.4	1004.2	983.8	963.3	942.9	922.6	902.0
117.5°	860.5	859.5	858.3	857.4	856.2	855.2	843.7	832.2	820.6	809.0	797.6
120°	739.1	734.8	730.3	725.9	721.5	717.0	712.1	707.0	702.0	697.1	691.9
122.5°	633.4	630.4	627.1	624.0	620.7	617.5	615.5	613.4	611.3	609.1	607.1
125°	549.5	549.1	548.6	548.2	547.7	547.3	546.2	545.0	543.7	542.5	541.4
127.5°	491.5	493.1	494.6	496.0	497.5	498.9	498.5	497.9	497.5	496.9	496.5
130°	454.8	457.9	460.7	463.4	466.2	469.1	468.3	467.5	466.8	465.9	465.0
132.5°	432.0	435.3	438.7	442.1	445.4	448.6	447.7	446.8	445.7	444.8	443.8
135°	415.6	418.9	422.0	425.2	428.3	431.4	430.2	429.1	428.0	426.9	425.7
137.5°	403.6	406.0	408.5	411.0	413.4	415.8	414.6	413.6	412.3	411.2	410.0
140°	393.8	395.7	397.5	399.5	401.3	403.2	401.9	400.5	399.2	397.9	396.4
142.5°	385.5	386.9	388.2	389.6	391.0	392.3	390.4	388.8	387.1	385.3	383.6
145°	380.2	381.0	381.8	382.7	383.3	384.2	382.3	380.3	378.3	376.4	374.4
147.5°	372.7	373.0	373.4	374.0	374.2	374.7	372.8	371.0	369.1	367.2	365.3
150°	364.5	365.0	365.3	365.7	366.1	366.4	364.5	362.6	360.7	358.8	356.9
152.5°	354.7	355.1	355.4	355.7	356.1	356.5	354.6	353.0	351.1	349.3	347.6
155°	347.3	347.6	347.7	347.9	347.9	348.1	346.6	345.2	343.7	342.2	340.7
157.5°	342.0	342.1	342.3	342.4	342.6	342.7	341.6	340.5	339.2	338.2	337.0
160°	338.1	338.2	338.3	338.4	338.6	338.7	337.7	336.9	335.9	334.9	333.9
162.5°	336.2	336.5	336.8	337.1	337.4	337.7	336.6	335.5	334.4	333.3	332.0
165°	334.4	334.6	334.8	335.0	335.0	335.2	334.3	333.6	332.8	332.0	331.2
167.5°	334.8	335.0	335.1	335.3	335.3	335.4	334.6	333.9	333.1	332.3	331.4
170°	334.1	334.3	334.6	334.9	335.2	335.3	334.7	334.2	333.4	332.9	332.2
172.5°	335.3	335.5	335.7	336.0	336.2	336.5	335.8	335.2	334.5	333.9	333.2
175°	333.9	334.0	334.1	334.1	334.1	334.2	333.6	333.2	332.6	332.1	331.6
177.5°	334.5	334.5	334.5	334.5	334.5	334.5	334.2	333.8	333.5	333.2	332.7
180°	332.8	332.8	332.8	332.8	332.8	332.8	332.8	332.8	332.8	332.8	332.8



TEST NUMBER: P1444726  
 CATALOG NUMBER: EHBR1-18-UNV-TA-L935-UPL30

**CANDELA DISTRIBUTION (continued):**

	330°	332.5°	335°	337.5°	340°	342.5°	345°	347.5°	350°	352.5°	355°
0°	14339.1	14339.1	14339.1	14339.1	14339.1	14339.1	14339.1	14339.1	14339.1	14339.1	14339.1
2.5°	14429.2	14423.0	14419.0	14413.8	14410.6	14406.6	14403.7	14401.2	14399.2	14397.3	14396.0
5°	14632.1	14599.9	14574.9	14547.8	14525.5	14503.3	14486.1	14472.0	14462.2	14454.9	14450.5
7.5°	14890.4	14831.4	14778.9	14723.7	14674.1	14625.3	14583.4	14547.2	14520.0	14502.4	14491.7
10°	15121.2	15042.2	14963.9	14881.7	14803.7	14728.0	14658.2	14596.7	14548.1	14515.8	14496.9
12.5°	15224.6	15157.3	15077.4	14988.1	14892.4	14795.7	14701.5	14616.5	14545.1	14497.2	14469.5
15°	15133.5	15105.9	15051.7	14982.3	14891.6	14791.7	14680.9	14576.9	14481.1	14419.1	14383.1
17.5°	14837.2	14875.8	14871.7	14845.1	14780.0	14695.8	14582.9	14466.1	14346.4	14263.4	14218.0
20°	14337.2	14458.5	14520.0	14551.7	14526.0	14471.4	14369.3	14250.7	14111.1	14002.8	13936.7
22.5°	13634.6	13848.8	13982.2	14079.8	14100.6	14081.9	13991.7	13879.0	13723.4	13593.2	13495.6
25°	12730.1	13043.9	13254.7	13420.0	13484.3	13500.9	13424.1	13311.9	13138.5	12986.9	12852.7
27.5°	11664.8	12072.4	12354.0	12576.1	12676.4	12719.9	12649.2	12534.7	12329.6	12148.5	11973.4
30°	10465.5	10949.0	11288.1	11554.3	11676.6	11734.1	11659.0	11531.2	11292.6	11074.6	10854.0
32.5°	9181.7	9711.0	10080.3	10369.6	10490.7	10544.7	10446.5	10303.1	10027.2	9770.5	9513.2
35°	7837.7	8371.9	8744.4	9026.0	9127.4	9160.0	9034.5	8868.6	8562.9	8281.2	8000.6
37.5°	6466.3	6963.2	7301.8	7554.5	7617.3	7623.0	7471.7	7288.5	6967.2	6689.4	6410.1
40°	5106.7	5525.8	5799.1	6001.4	6023.3	6003.8	5839.4	5655.0	5354.4	5105.5	4860.4
42.5°	3826.1	4142.5	4337.5	4476.1	4467.8	4429.4	4278.7	4120.2	3872.2	3682.7	3489.7
45°	2729.0	2937.6	3051.6	3132.7	3106.6	3070.0	2952.7	2841.6	2673.1	2550.7	2421.0
47.5°	1895.9	2144.9	2101.6	2260.1	2123.5	2213.8	2025.8	1922.2	1832.9	1767.8	1694.5
50°	1357.2	1414.3	1441.9	1460.7	1450.8	1436.9	1403.1	1372.9	1332.0	1302.3	1267.6
52.5°	1048.2	1076.7	1092.3	1103.6	1101.5	1096.4	1081.7	1068.2	1049.1	1036.5	1021.3
55°	887.8	888.3	917.0	904.7	922.9	901.5	910.0	886.3	890.1	869.8	856.2
57.5°	737.8	749.4	754.7	759.9	758.4	757.5	751.8	748.9	742.5	740.6	735.9
60°	649.0	655.1	656.4	658.7	656.7	656.0	651.6	649.9	645.7	644.9	641.8
62.5°	588.1	591.2	591.2	591.2	588.7	586.2	581.2	578.7	575.0	574.3	572.4
65°	537.3	540.5	541.1	541.7	539.9	538.0	533.6	530.7	527.0	525.6	523.6
67.5°	484.8	488.2	489.4	491.2	490.1	489.8	486.8	485.7	483.2	482.6	480.7
70°	443.6	445.1	445.0	444.9	442.6	440.5	437.0	435.4	432.8	432.2	430.6
72.5°	419.2	420.2	419.5	418.6	415.6	412.5	408.5	405.5	402.0	400.0	397.5
75°	384.6	386.0	385.1	384.6	381.8	379.8	376.6	374.9	372.5	371.9	370.2
77.5°	342.3	343.0	341.5	341.4	339.3	338.1	335.6	335.2	333.4	333.4	331.9
80°	295.2	294.7	292.6	292.1	290.0	289.5	287.6	287.8	286.3	286.9	285.8
82.5°	242.9	241.5	238.6	237.7	235.4	235.2	233.9	234.9	234.1	235.4	234.6
85°	174.0	174.4	173.1	173.1	172.5	172.7	172.6	173.4	173.5	174.6	174.6
87.5°	97.1	98.4	98.2	99.4	99.3	100.8	101.3	103.4	103.7	105.7	105.7
90°	65.1	65.0	62.4	62.5	61.3	62.4	61.5	62.7	61.5	62.4	60.8
92.5°	64.7	60.3	55.9	51.4	49.2	46.9	44.9	42.4	40.3	38.0	35.8
95°	81.8	74.4	66.9	59.4	56.8	54.2	51.6	49.0	46.5	44.0	41.3
97.5°	92.4	83.6	74.7	65.8	63.5	61.4	59.0	56.8	54.6	52.4	50.1
100°	126.5	109.9	93.5	76.9	75.0	73.1	71.2	69.3	67.5	65.6	63.7
102.5°	265.8	230.8	195.6	160.4	153.8	147.1	140.5	133.7	127.1	120.4	113.7
105°	505.6	448.6	391.6	334.6	316.5	298.5	280.3	262.3	244.2	226.1	208.0
107.5°	769.9	712.0	654.3	596.5	563.1	529.7	496.2	462.7	429.3	395.8	362.4
110°	917.9	875.6	833.4	791.0	764.2	737.2	710.3	683.3	656.5	629.4	602.4



TEST NUMBER: P1444726  
 CATALOG NUMBER: EHBR1-18-UNV-TA-L935-UPL30

**CANDELA DISTRIBUTION (continued):**

	330°	332.5°	335°	337.5°	340°	342.5°	345°	347.5°	350°	352.5°	355°
112.5°	941.6	911.3	881.0	850.7	838.4	826.2	814.0	801.7	789.5	777.2	764.9
115°	881.5	861.1	840.5	819.9	815.6	811.3	806.9	802.5	798.1	793.7	789.2
117.5°	786.0	774.4	762.7	751.1	751.7	752.3	753.0	753.5	754.1	754.5	755.2
120°	686.8	681.8	676.8	671.6	675.3	678.7	682.4	685.8	689.4	692.7	696.2
122.5°	604.9	602.7	600.6	598.4	602.8	607.1	611.4	615.7	619.8	623.9	628.1
125°	540.2	538.9	537.7	536.4	540.8	545.1	549.3	553.6	557.8	561.9	566.1
127.5°	495.9	495.4	494.9	494.3	497.4	500.3	503.4	506.2	509.2	511.9	514.7
130°	464.2	463.3	462.6	461.8	464.4	467.1	469.8	472.3	474.9	477.3	479.7
132.5°	442.9	441.8	440.9	439.9	441.8	443.6	445.5	447.1	448.8	450.4	451.9
135°	424.6	423.3	422.3	421.0	422.8	424.4	426.1	427.6	429.2	430.6	432.0
137.5°	408.9	407.7	406.5	405.3	406.9	408.3	409.8	411.1	412.5	413.7	415.0
140°	395.1	393.7	392.4	391.0	392.3	393.5	394.9	396.1	397.2	398.2	399.4
142.5°	381.7	379.9	378.4	376.5	377.5	378.3	379.2	380.0	380.9	381.7	382.4
145°	372.4	370.4	368.4	366.4	367.2	367.9	368.6	369.3	369.8	370.3	371.0
147.5°	363.5	361.5	359.7	357.8	358.5	358.9	359.3	359.7	360.3	360.6	360.9
150°	355.0	353.0	351.1	349.1	349.6	350.0	350.4	350.8	351.2	351.6	351.8
152.5°	345.8	343.9	342.1	340.2	340.6	341.0	341.2	341.6	342.0	342.2	342.5
155°	339.2	337.7	336.2	334.5	335.0	335.3	335.4	335.8	336.1	336.3	336.4
157.5°	335.8	334.4	333.3	332.1	332.2	332.4	332.4	332.4	332.4	332.5	332.5
160°	332.9	331.8	330.8	329.7	329.8	329.9	330.0	330.0	330.0	329.9	330.0
162.5°	330.8	329.6	328.5	327.2	327.3	327.4	327.5	327.5	327.5	327.4	327.4
165°	330.3	329.5	328.5	327.6	327.5	327.5	327.4	327.2	327.1	326.8	326.7
167.5°	330.5	329.7	328.7	327.8	327.9	328.1	328.2	328.2	328.2	328.1	328.2
170°	331.5	330.7	330.1	329.3	329.2	329.2	329.0	328.9	328.8	328.6	328.5
172.5°	332.4	331.7	331.1	330.2	330.2	330.2	330.1	330.0	329.8	329.7	329.7
175°	331.0	330.4	329.9	329.4	329.3	329.3	329.2	329.2	329.1	329.0	328.9
177.5°	332.4	332.1	331.6	331.3	331.3	331.3	331.2	331.1	331.1	331.1	331.0
180°	332.8	332.8	332.8	332.8	332.8	332.8	332.8	332.8	332.8	332.8	332.8



TEST NUMBER: P1444726  
 CATALOG NUMBER: EHBR1-18-UNV-TA-L935-UPL30

**CANDELA DISTRIBUTION (continued):**

	357.5°	360°
0°	14339.1	14339.1
2.5°	14394.7	14394.0
5°	14448.2	14447.3
7.5°	14488.9	14488.7
10°	14493.7	14496.2
12.5°	14464.8	14466.8
15°	14380.4	14384.3
17.5°	14218.9	14224.0
20°	13940.8	13946.1
22.5°	13490.3	13492.5
25°	12835.4	12826.1
27.5°	11942.6	11926.7
30°	10807.7	10792.2
32.5°	9454.5	9444.9
35°	7931.3	7925.1
37.5°	6327.6	6315.1
40°	4770.7	4734.5
42.5°	3405.3	3341.6
45°	2353.3	2277.9
47.5°	1642.8	1596.2
50°	1245.2	1230.2
52.5°	1014.6	1011.1
55°	856.1	854.6
57.5°	737.0	736.5
60°	643.4	643.2
62.5°	573.6	573.9
65°	524.5	524.6
67.5°	481.2	480.9
70°	431.2	430.9
72.5°	396.8	396.2
75°	370.2	369.8
77.5°	332.4	331.8
80°	286.6	285.8
82.5°	235.6	234.8
85°	175.8	175.8
87.5°	107.6	107.5
90°	61.5	59.7
92.5°	33.6	31.5
95°	38.8	36.3
97.5°	47.9	45.7
100°	61.9	60.0
102.5°	107.0	100.4
105°	190.0	171.8
107.5°	328.9	295.5
110°	575.4	548.5



TEST NUMBER: P1444726  
CATALOG NUMBER: EHBR1-18-UNV-TA-L935-UPL30

**CANDELA DISTRIBUTION (continued):**

	357.5°	360°
112.5°	752.6	740.3
115°	784.7	780.3
117.5°	755.5	756.1
120°	699.4	702.9
122.5°	632.1	636.2
125°	570.1	574.1
127.5°	517.3	520.0
130°	481.9	484.3
132.5°	453.3	454.7
135°	433.2	434.5
137.5°	416.1	417.1
140°	400.2	401.1
142.5°	382.9	383.6
145°	371.3	371.8
147.5°	361.0	361.4
150°	352.0	352.3
152.5°	342.6	342.9
155°	336.6	336.8
157.5°	332.4	332.4
160°	329.9	329.9
162.5°	327.3	327.4
165°	326.5	326.2
167.5°	328.1	328.2
170°	328.4	328.3
172.5°	329.5	329.5
175°	328.8	328.8
177.5°	331.0	330.9
180°	332.8	332.8

Cooper Lighting Solutions Photometric Lab  
1121 Highway 74 South  
Peachtree City, GA 30269



LM-79-2019: Approved Method: Electrical and Photometric Measurements of Solid-State Lighting Products

Report Prepared for

Cooper Lighting Solutions

Metalux

Report Number: SP1-2506-472-6

Test Date: 08/01/2025

Luminaire Tested: EHBR-60-L935-N

Data in this report applies to families of products including EHBR-60-L935-N

**Test Information**

Test Method: LM-79-2019  
 Report Number: SP1-2506-472-6  
 Test Lab: COOPER LIGHTING SOLUTIONS  
 Photometer: SP1 - 76IN SPHERE  
 Measurement Geometry: 4π  
 Issue Date: 08/05/2025  
 Manufacturer: COOPER LIGHTING SOLUTIONS  
 Product Line: Metalux  
 Catalog Number: **EHBR-60-L935-N**  
 Description: Elevate Round Highbay at, 60000 lumens, 3500K 90CRI LEDs with N lens

**Spectral Parameters**

CCT (K): 3406  
 CIE u': 0.2394  
 CIE v': 0.5094  
 Duv: -0.0028  
 CIE x: 0.4076  
 CIE y: 0.3856  
 CIE z: 0.2068  
 Peak Wavelength (nm): 630  
 Dominant Wavelength (nm): 582  
 Purity: 38.0517  
 Rf: 91.3  
 Rg: 100

CRI (Ra):	94.6		
R1:	96.6	R9:	63.8
R2:	98.4	R10:	94.7
R3:	98.1	R11:	96.6
R4:	95.8	R12:	80.9
R5:	96.2	R13:	97.4
R6:	95.4	R14:	98.3
R7:	91.8	R15:	93.1
R8:	84.4		



**Test Conditions**

Stabilization Time: 35M  
 Operation Time: 1H 35M  
 Sphere Temperature (°C): 25.0

REPORT NUMBER: SP1-2506-472-6

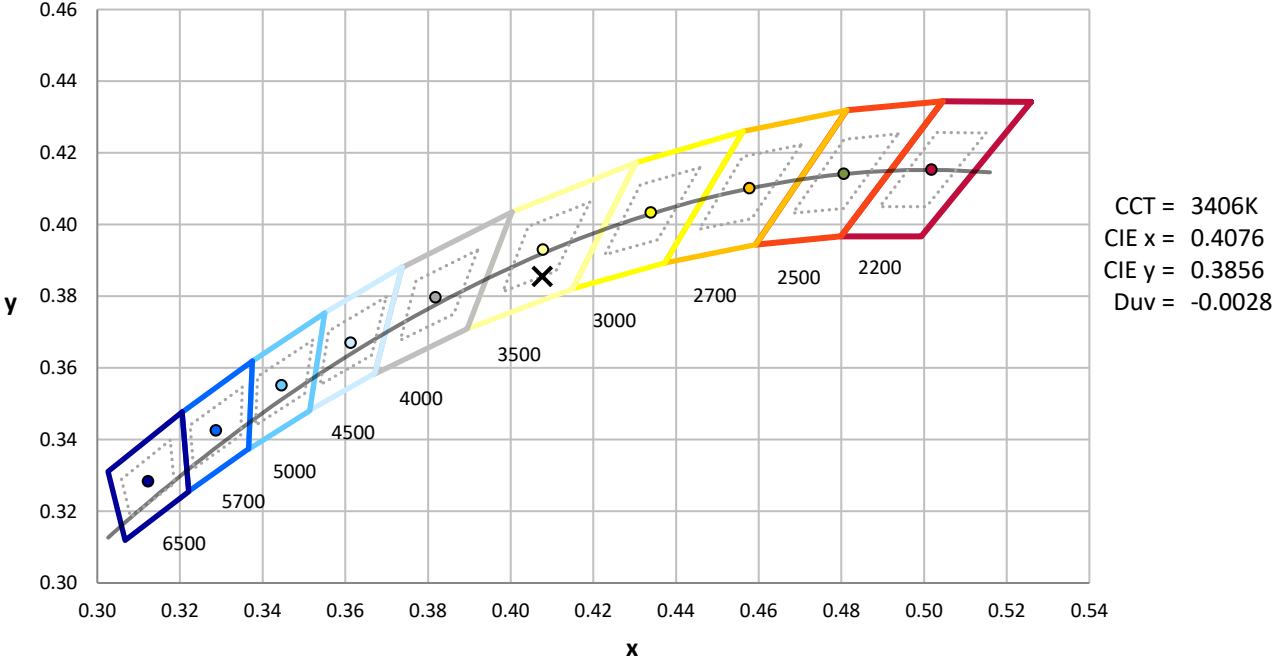
Measurement and Test Equipment			
Instrument	Identification Number	Calibration Date	Calibration Due Date
Photometer	76INCH SPHERE IN0058	6/16/2025	12/16/2025
Power Meter	XITRON INXT2011004	1/21/2025	1/21/2026
AC Power Source	CHROMA 61603 IN0063	10/22/2024	10/22/2025
DC Power Source	AGILENT E3634A IN0208	10/22/2024	10/22/2025
Sphere Thermometer	ONSET IN0085	10/22/2024	10/22/2025
Room Thermometer	ONSET IN0046	10/22/2024	10/22/2025

REPORT NUMBER: SP1-2506-472-6

CIE 1931 Chromaticity Diagram



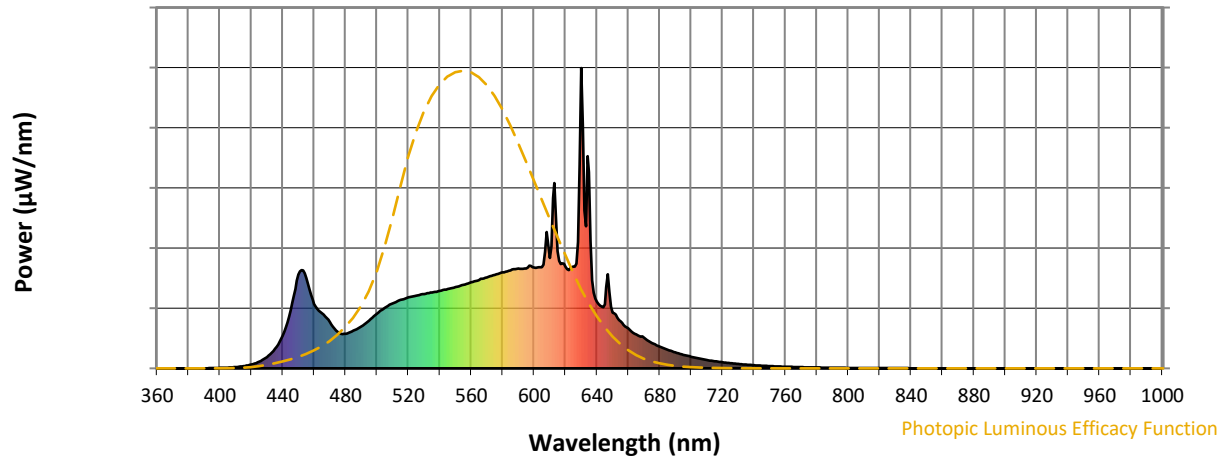
CIE 1931 Chromaticity Diagram with 2017 ANSI 7-Step and 4-Step Quadrangles



Point lies inside the ANSI 3500K 4-step quadrangle

REPORT NUMBER: SP1-2506-472-6

**Photopic Flux vs. Wavelength**



**Photopic Lumens: NR**

$\lambda$ (nm)	Power W <sup>^</sup> /nm	Lumens ( $\phi$ /nm)	$\lambda$ (nm)	Power W <sup>^</sup> /nm	Lumens ( $\phi$ /nm)	$\lambda$ (nm)	Power W <sup>^</sup> /nm	Lumens ( $\phi$ /nm)	$\lambda$ (nm)	Power W <sup>^</sup> /nm	Lumens ( $\phi$ /nm)	$\lambda$ (nm)	Power W <sup>^</sup> /nm	Lumens ( $\phi$ /nm)
360	0	NR	490	140	NR	620	338	NR	750	8	NR	880	0	NR
365	0	NR	495	159	NR	625	339	NR	755	7	NR	885	0	NR
370	0	NR	500	182	NR	630	1000	NR	760	5	NR	890	0	NR
375	0	NR	505	202	NR	635	653	NR	765	5	NR	895	0	NR
380	0	NR	510	216	NR	640	222	NR	770	4	NR	900	0	NR
385	0	NR	515	228	NR	645	214	NR	775	3	NR	905	0	NR
390	0	NR	520	236	NR	650	185	NR	780	3	NR	910	0	NR
395	1	NR	525	242	NR	655	157	NR	785	3	NR	915	0	NR
400	2	NR	530	248	NR	660	133	NR	790	2	NR	920	0	NR
405	3	NR	535	253	NR	665	113	NR	795	2	NR	925	0	NR
410	4	NR	540	258	NR	670	103	NR	800	2	NR	930	0	NR
415	7	NR	545	264	NR	675	85	NR	805	1	NR	935	0	NR
420	13	NR	550	270	NR	680	72	NR	810	1	NR	940	0	NR
425	22	NR	555	278	NR	685	62	NR	815	1	NR	945	0	NR
430	38	NR	560	286	NR	690	53	NR	820	1	NR	950	0	NR
435	65	NR	565	295	NR	695	45	NR	825	1	NR	955	0	NR
440	108	NR	570	303	NR	700	39	NR	830	1	NR	960	0	NR
445	193	NR	575	311	NR	705	33	NR	835	1	NR	965	0	NR
450	312	NR	580	319	NR	710	28	NR	840	1	NR	970	0	NR
455	300	NR	585	326	NR	715	24	NR	845	0	NR	975	0	NR
460	214	NR	590	332	NR	720	20	NR	850	0	NR	980	0	NR
465	184	NR	595	333	NR	725	17	NR	855	0	NR	985	0	NR
470	153	NR	600	336	NR	730	15	NR	860	0	NR	990	0	NR
475	122	NR	605	337	NR	735	12	NR	865	0	NR	995	0	NR
480	115	NR	610	367	NR	740	10	NR	870	0	NR	1000	0	NR
485	125	NR	615	390	NR	745	9	NR	875	0	NR			

REPORT NUMBER: SP1-2506-472-6

**Scotopic Flux vs. Wavelength**



**Scotopic Lumens: NR**

**S/P: 1.62**

$\lambda$ (nm)	Power W <sup>^</sup> /nm	Lumens ( $\phi$ /nm)	$\lambda$ (nm)	Power W <sup>^</sup> /nm	Lumens ( $\phi$ /nm)	$\lambda$ (nm)	Power W <sup>^</sup> /nm	Lumens ( $\phi$ /nm)	$\lambda$ (nm)	Power W <sup>^</sup> /nm	Lumens ( $\phi$ /nm)	$\lambda$ (nm)	Power W <sup>^</sup> /nm	Lumens ( $\phi$ /nm)
360	0	NR	490	140	NR	620	338	NR	750	8	NR	880	0	NR
365	0	NR	495	159	NR	625	339	NR	755	7	NR	885	0	NR
370	0	NR	500	182	NR	630	1000	NR	760	5	NR	890	0	NR
375	0	NR	505	202	NR	635	653	NR	765	5	NR	895	0	NR
380	0	NR	510	216	NR	640	222	NR	770	4	NR	900	0	NR
385	0	NR	515	228	NR	645	214	NR	775	3	NR	905	0	NR
390	0	NR	520	236	NR	650	185	NR	780	3	NR	910	0	NR
395	1	NR	525	242	NR	655	157	NR	785	3	NR	915	0	NR
400	2	NR	530	248	NR	660	133	NR	790	2	NR	920	0	NR
405	3	NR	535	253	NR	665	113	NR	795	2	NR	925	0	NR
410	4	NR	540	258	NR	670	103	NR	800	2	NR	930	0	NR
415	7	NR	545	264	NR	675	85	NR	805	1	NR	935	0	NR
420	13	NR	550	270	NR	680	72	NR	810	1	NR	940	0	NR
425	22	NR	555	278	NR	685	62	NR	815	1	NR	945	0	NR
430	38	NR	560	286	NR	690	53	NR	820	1	NR	950	0	NR
435	65	NR	565	295	NR	695	45	NR	825	1	NR	955	0	NR
440	108	NR	570	303	NR	700	39	NR	830	1	NR	960	0	NR
445	193	NR	575	311	NR	705	33	NR	835	1	NR	965	0	NR
450	312	NR	580	319	NR	710	28	NR	840	1	NR	970	0	NR
455	300	NR	585	326	NR	715	24	NR	845	0	NR	975	0	NR
460	214	NR	590	332	NR	720	20	NR	850	0	NR	980	0	NR
465	184	NR	595	333	NR	725	17	NR	855	0	NR	985	0	NR
470	153	NR	600	336	NR	730	15	NR	860	0	NR	990	0	NR
475	122	NR	605	337	NR	735	12	NR	865	0	NR	995	0	NR
480	115	NR	610	367	NR	740	10	NR	870	0	NR	1000	0	NR
485	125	NR	615	390	NR	745	9	NR	875	0	NR			

REPORT NUMBER: SP1-2506-472-6

Melanopic Flux vs. Wavelength



Melanopic Lumens: NR M/P: 3.3

λ (nm)	Power W <sup>^</sup> /nm	Lumens (φ/nm)	λ (nm)	Power W <sup>^</sup> /nm	Lumens (φ/nm)	λ (nm)	Power W <sup>^</sup> /nm	Lumens (φ/nm)	λ (nm)	Power W <sup>^</sup> /nm	Lumens (φ/nm)	λ (nm)	Power W <sup>^</sup> /nm	Lumens (φ/nm)
360	0	NR	490	140	NR	620	338	NR	750	8	NR	880	0	NR
365	0	NR	495	159	NR	625	339	NR	755	7	NR	885	0	NR
370	0	NR	500	182	NR	630	1000	NR	760	5	NR	890	0	NR
375	0	NR	505	202	NR	635	653	NR	765	5	NR	895	0	NR
380	0	NR	510	216	NR	640	222	NR	770	4	NR	900	0	NR
385	0	NR	515	228	NR	645	214	NR	775	3	NR	905	0	NR
390	0	NR	520	236	NR	650	185	NR	780	3	NR	910	0	NR
395	1	NR	525	242	NR	655	157	NR	785	3	NR	915	0	NR
400	2	NR	530	248	NR	660	133	NR	790	2	NR	920	0	NR
405	3	NR	535	253	NR	665	113	NR	795	2	NR	925	0	NR
410	4	NR	540	258	NR	670	103	NR	800	2	NR	930	0	NR
415	7	NR	545	264	NR	675	85	NR	805	1	NR	935	0	NR
420	13	NR	550	270	NR	680	72	NR	810	1	NR	940	0	NR
425	22	NR	555	278	NR	685	62	NR	815	1	NR	945	0	NR
430	38	NR	560	286	NR	690	53	NR	820	1	NR	950	0	NR
435	65	NR	565	295	NR	695	45	NR	825	1	NR	955	0	NR
440	108	NR	570	303	NR	700	39	NR	830	1	NR	960	0	NR
445	193	NR	575	311	NR	705	33	NR	835	1	NR	965	0	NR
450	312	NR	580	319	NR	710	28	NR	840	1	NR	970	0	NR
455	300	NR	585	326	NR	715	24	NR	845	0	NR	975	0	NR
460	214	NR	590	332	NR	720	20	NR	850	0	NR	980	0	NR
465	184	NR	595	333	NR	725	17	NR	855	0	NR	985	0	NR
470	153	NR	600	336	NR	730	15	NR	860	0	NR	990	0	NR
475	122	NR	605	337	NR	735	12	NR	865	0	NR	995	0	NR
480	115	NR	610	367	NR	740	10	NR	870	0	NR	1000	0	NR
485	125	NR	615	390	NR	745	9	NR	875	0	NR			

**Summary**

$R_f = 91.3$   
 $R_g = 100$   
 $CIE R_a = 94.6$   
 $R_9 = 63.8$



**Color Vector Graphics**

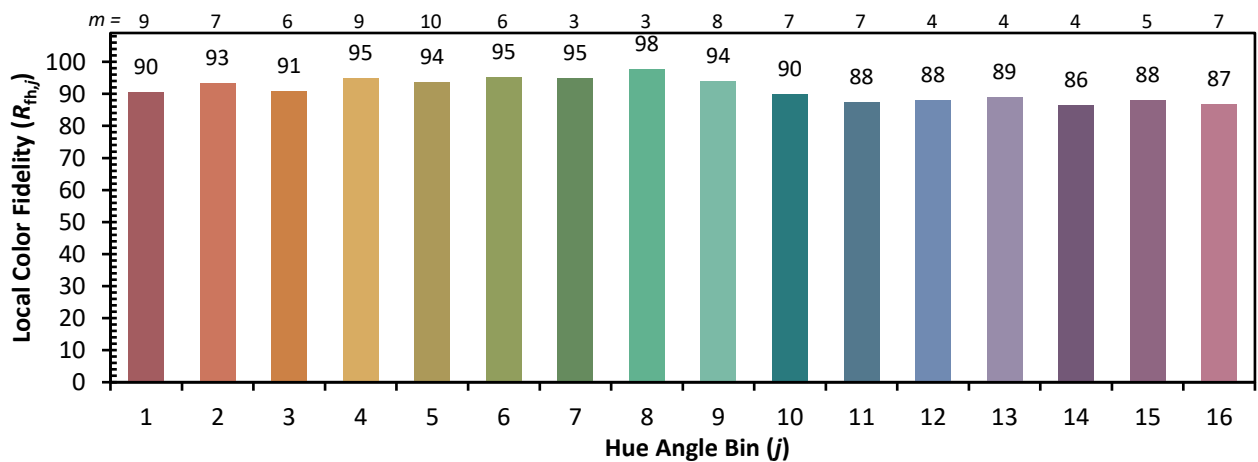
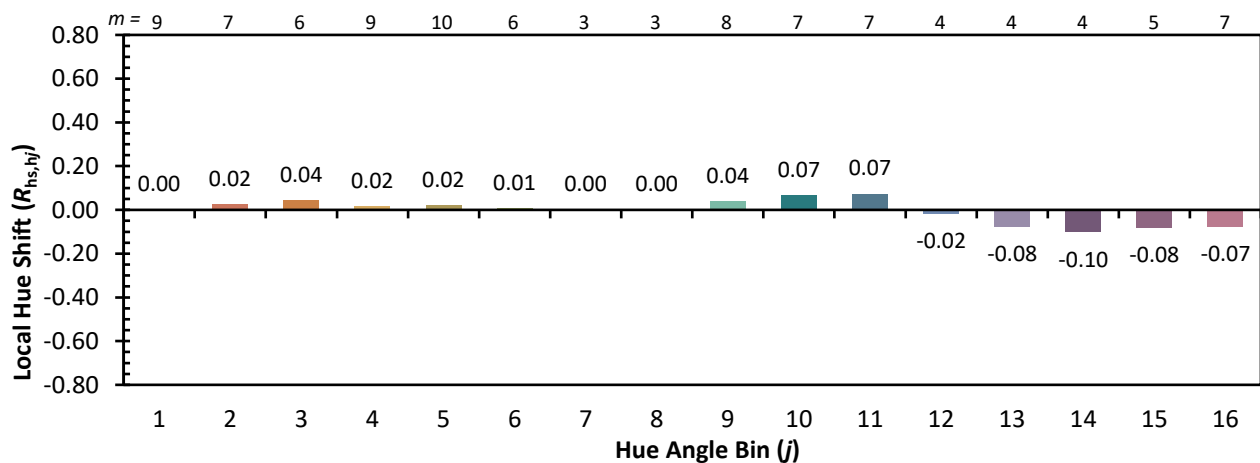
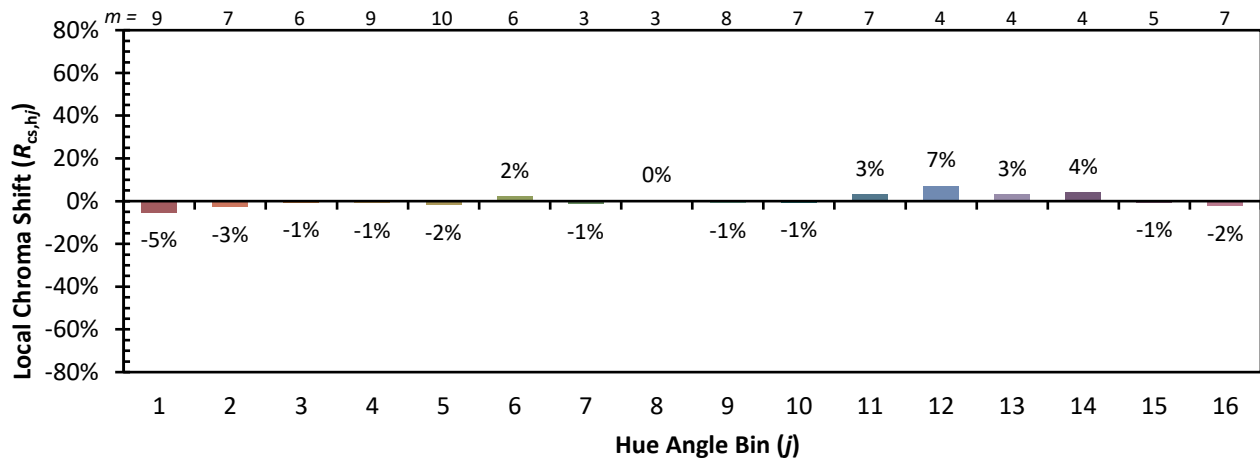


**Individual Sample Fidelity Index ( $R_{f,i}$ )**

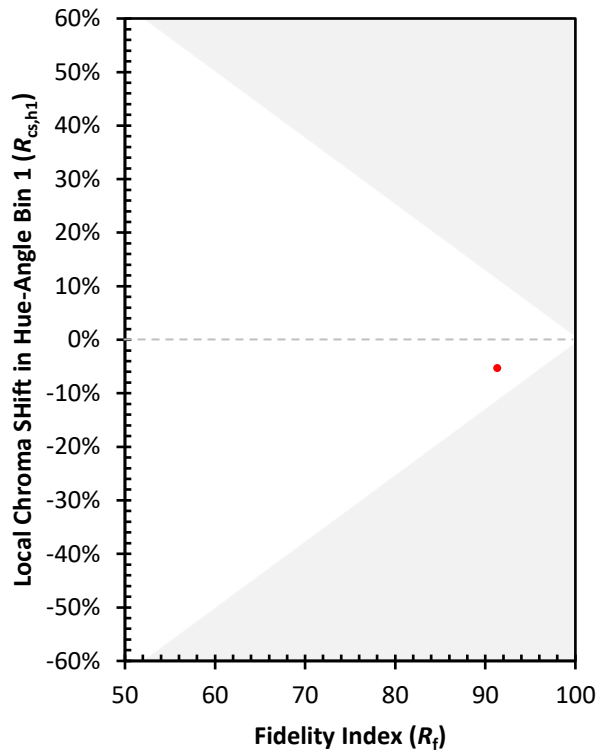
CES01 = 86	CES26 = 94	CES51 = 97	CES76 = 90
CES02 = 63	CES27 = 92	CES52 = 98	CES77 = 86
CES03 = 31	CES28 = 97	CES53 = 98	CES78 = 86
CES04 = 70	CES29 = 97	CES54 = 93	CES79 = 90
CES05 = 50	CES30 = 92	CES55 = 92	CES80 = 91
CES06 = 51	CES31 = 97	CES56 = 96	CES81 = 74
CES07 = 43	CES32 = 89	CES57 = 94	CES82 = 96
CES08 = 41	CES33 = 99	CES58 = 95	CES83 = 94
CES09 = 29	CES34 = 94	CES59 = 98	CES84 = 95
CES10 = 75	CES35 = 97	CES60 = 92	CES85 = 79
CES11 = 58	CES36 = 81	CES61 = 93	CES86 = 79
CES12 = 64	CES37 = 96	CES62 = 86	CES87 = 92
CES13 = 44	CES38 = 87	CES63 = 94	CES88 = 98
CES14 = 74	CES39 = 99	CES64 = 91	CES89 = 84
CES15 = 72	CES40 = 97	CES65 = 90	CES90 = 96
CES16 = 48	CES41 = 96	CES66 = 89	CES91 = 75
CES17 = 49	CES42 = 94	CES67 = 88	CES92 = 76
CES18 = 56	CES43 = 93	CES68 = 89	CES93 = 86
CES19 = 71	CES44 = 99	CES69 = 90	CES94 = 74
CES20 = 67	CES45 = 97	CES70 = 88	CES95 = 83
CES21 = 86	CES46 = 97	CES71 = 83	CES96 = 92
CES22 = 78	CES47 = 91	CES72 = 94	CES97 = 96
CES23 = 91	CES48 = 91	CES73 = 83	CES98 = 95
CES24 = 90	CES49 = 96	CES74 = 90	CES99 = 92
CES25 = 71	CES50 = 98	CES75 = 85	



Color Rendition by Hue-Angle Bin



Measure Comparisons



(END OF REPORT)