

Cooper Lighting Solutions Photometric Lab
1121 Highway 74 South
Peachtree City, GA 30269



Scaled data based on original data using
LM-79-2019 Approved Method: Electrical and Photometric Measurements of Solid-
State Lighting Products

Test Report Prepared for
Cooper Lighting Solutions

Brand: METALUX

Report Number: P1444744

Luminaire Tested: EHBR1-30-UNV-TA-L935-UPL40

Issue Date: 5/1/2026

Test Information

Test Method: LM-79-2019
Report Number: P1444744
REPORT IS A COMBINATION OF REPORTS P1444357 AND P1431635
Test Lab: INNOVATION CENTER
Issue Date: 5/1/2026
Manufacturer: COOPER LIGHTING SOLUTIONS
Product Line: METALUX
Catalog Number: EHBR1-30-UNV-TA-L935-UPL40
Description: Elevate Round Highbay at, 30000 lumens, 3500K 90CRI LEDs with TA lens
Light Source: -
Ballast/Driver: -

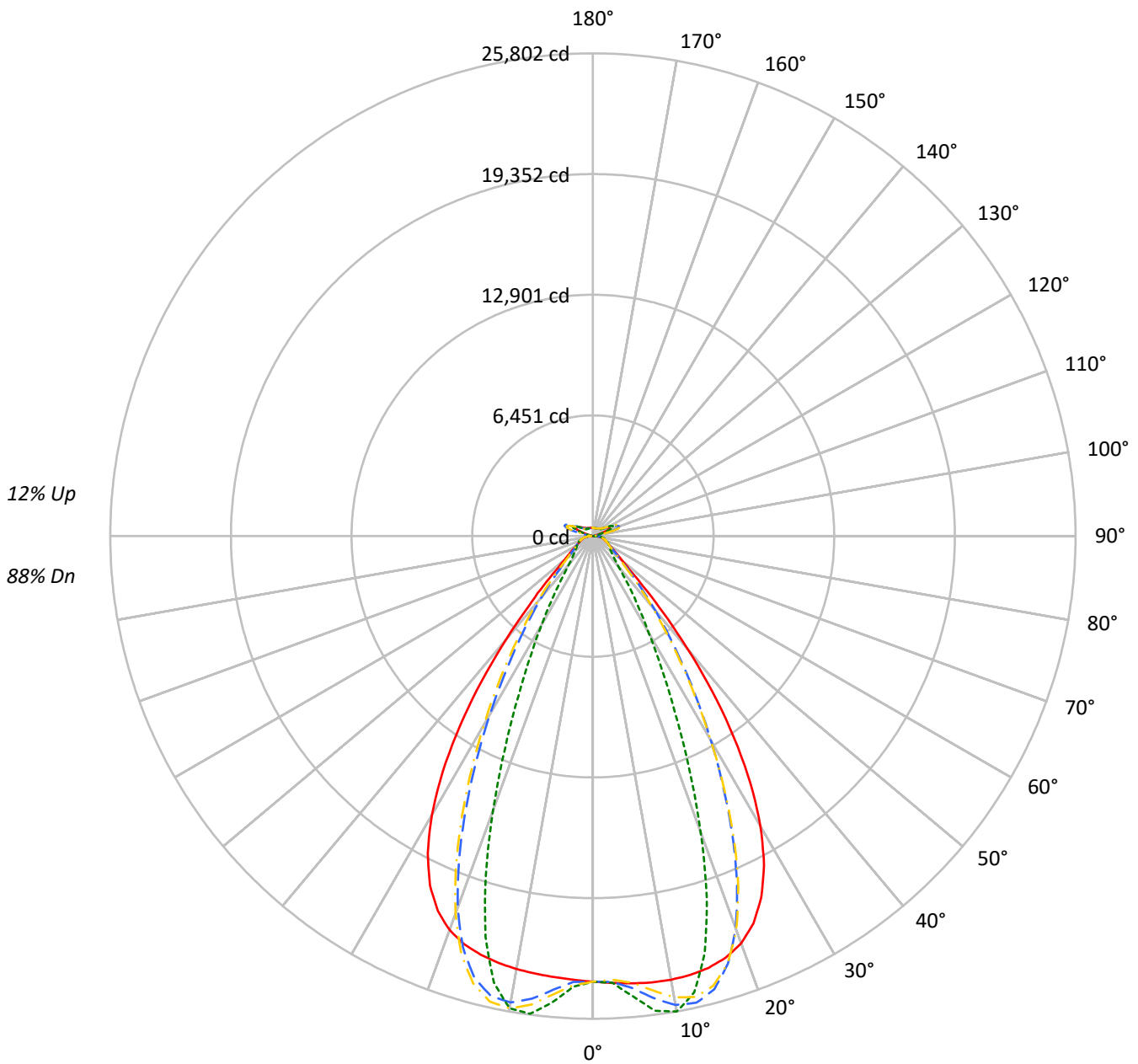
Summary

Lumens per Lamp: N/A
Luminaire Lumens: 31090.7 lumens
Efficiency: N/A
Efficacy: 163.3 lumens/watt
Spacing Criteria (0/90/45): 1.13 / 0.77 / 0.88
Luminous Opening: Vertical Cylinder (Dia: 1.71' x H: 0.1')
CIE Type: Semi-Direct

Input Watts (W): 190.4
Input Voltage (V): NR
Input Current (A_{in}): NR
Voltage Rise (V): NR
Power Factor: NR
Total Harmonic Distortion (THDi): NR
Frequency (hertz): 60
Stabilization Time: NR
Operation Time: NR
Ambient Temperature (°C): NR
Test Distance: 24 FT

TEST NUMBER: P1444744
CATALOG NUMBER: EHBR1-30-UNV-TA-L935-UPL40

Luminous Intensity Polar Plot



— 0°-180° - - 45°-225° - · - · 90°-270° - · - · 135°-315°



TEST NUMBER: P1444744
 CATALOG NUMBER: EHBR1-30-UNV-TA-L935-UPL40

COEFFICIENT OF UTILIZATION - ZONAL CAVITY METHOD:

| | | | | | | | | | | | | | | | | | | | | | |
|-----|-----|-----|-----|-----|-----|-----|-----|-----|-----|-----|-----|----|----|----|----|----|----|----|----|----|----|
| RF | 20 | | | | 20 | | | | 20 | | | | 20 | | | | 20 | | | | |
| RC | 80 | | | | 70 | | | | 50 | | | | 30 | | | | 10 | | | 0 | |
| RW | 70 | 50 | 30 | 10 | 70 | 50 | 30 | 10 | 50 | 30 | 10 | 50 | 30 | 10 | 50 | 30 | 10 | 50 | 30 | 10 | 0 |
| RCR | | | | | | | | | | | | | | | | | | | | | |
| 0 | 116 | 116 | 116 | 116 | 112 | 112 | 112 | 112 | 105 | 105 | 105 | 98 | 98 | 98 | 91 | 91 | 91 | 88 | | | 88 |
| 1 | 109 | 106 | 102 | 100 | 105 | 102 | 99 | 97 | 96 | 94 | 92 | 90 | 88 | 87 | 85 | 84 | 82 | | | | 80 |
| 2 | 102 | 96 | 91 | 87 | 99 | 93 | 89 | 85 | 88 | 85 | 82 | 83 | 80 | 78 | 79 | 77 | 75 | | | | 72 |
| 3 | 96 | 88 | 82 | 77 | 93 | 86 | 80 | 76 | 81 | 77 | 73 | 77 | 74 | 71 | 73 | 71 | 68 | | | | 66 |
| 4 | 90 | 81 | 75 | 70 | 87 | 79 | 73 | 69 | 75 | 70 | 66 | 72 | 68 | 64 | 69 | 65 | 62 | | | | 60 |
| 5 | 85 | 75 | 68 | 63 | 82 | 73 | 67 | 62 | 70 | 65 | 61 | 67 | 63 | 59 | 64 | 61 | 58 | | | | 56 |
| 6 | 80 | 70 | 63 | 58 | 77 | 68 | 62 | 57 | 65 | 60 | 56 | 63 | 58 | 54 | 60 | 56 | 53 | | | | 51 |
| 7 | 75 | 65 | 58 | 53 | 73 | 63 | 57 | 53 | 61 | 56 | 52 | 59 | 54 | 50 | 57 | 53 | 49 | | | | 48 |
| 8 | 71 | 61 | 54 | 49 | 69 | 59 | 53 | 49 | 57 | 52 | 48 | 55 | 50 | 47 | 53 | 49 | 46 | | | | 44 |
| 9 | 67 | 57 | 50 | 46 | 66 | 56 | 50 | 45 | 54 | 48 | 45 | 52 | 47 | 44 | 50 | 46 | 43 | | | | 41 |
| 10 | 64 | 53 | 47 | 43 | 62 | 52 | 46 | 42 | 51 | 45 | 42 | 49 | 44 | 41 | 48 | 43 | 40 | | | | 39 |

AVERAGE LUMINANCE (cd/sqm):

| | 0° | 90° | 180° | 270° |
|-----|--------|--------|--------|--------|
| 0° | 111850 | 111850 | 111850 | 111850 |
| 5° | 112392 | 115669 | 110818 | 117184 |
| 10° | 113330 | 121444 | 110612 | 120640 |
| 15° | 113886 | 110088 | 110419 | 105655 |
| 20° | 112709 | 82011 | 109020 | 75880 |
| 25° | 106683 | 51868 | 103157 | 47061 |
| 30° | 93196 | 31169 | 89586 | 28485 |
| 35° | 71724 | 19558 | 67598 | 17325 |
| 40° | 45372 | 12268 | 41512 | 11529 |
| 45° | 23386 | 9558 | 22998 | 9401 |
| 50° | 13711 | 8501 | 13290 | 8369 |
| 55° | 10504 | 8044 | 10115 | 7971 |
| 60° | 8888 | 8216 | 8510 | 8110 |
| 65° | 8348 | 8580 | 8029 | 8288 |
| 70° | 8155 | 8984 | 7749 | 8647 |
| 75° | 8720 | 9528 | 8248 | 9108 |
| 80° | 9024 | 10550 | 8181 | 9630 |
| 85° | 8499 | 10180 | 6867 | 8717 |

MAXIMUM LUMINANCE 45°-90°:

Horizontal Angle: 25°
 Vertical Angle: 45°
 Luminance: 35788 cd/sqm



TEST NUMBER: P1444744
 CATALOG NUMBER: EHBR1-30-UNV-TA-L935-UPL40

ZONAL LUMENS:

| Zone | Lumens | % Fixture |
|-----------|---------|-----------|
| 0°-10° | 2347.3 | 7.5 |
| 10°-20° | 6603.2 | 21.2 |
| 20°-30° | 7520.5 | 24.2 |
| 30°-40° | 5405.4 | 17.4 |
| 40°-50° | 2493.0 | 8.0 |
| 50°-60° | 1193.0 | 3.8 |
| 60°-70° | 870.5 | 2.8 |
| 70°-80° | 661.3 | 2.1 |
| 80°-90° | 307.0 | 1.0 |
| 90°-100° | 102.3 | 0.3 |
| 100°-110° | 619.9 | 2.0 |
| 110°-120° | 1145.8 | 3.7 |
| 120°-130° | 692.6 | 2.2 |
| 130°-140° | 434.4 | 1.4 |
| 140°-150° | 313.6 | 1.0 |
| 150°-160° | 212.9 | 0.7 |
| 160°-170° | 125.7 | 0.4 |
| 170°-180° | 42.5 | 0.1 |
| 0°-30° | 16470.9 | 53.0 |
| 0°-40° | 21876.3 | 70.4 |
| 0°-60° | 25562.3 | 82.2 |
| 0°-90° | 27401.0 | 88.1 |
| 90°-120° | 1867.9 | 6.0 |
| 90°-150° | 3308.6 | 10.6 |
| 90°-180° | 3690.0 | 11.9 |
| 0°-180° | 31090.7 | 100.0 |

CANDELA DISTRIBUTION:

| | 0° | 90° | 180° | 270° | 360° | Flux |
|------|-------|-------|-------|-------|-------|------|
| 0° | 23818 | 23818 | 23818 | 23818 | 23818 | |
| 5° | 23997 | 24697 | 23662 | 25021 | 23997 | 2293 |
| 15° | 23893 | 23096 | 23165 | 22166 | 23893 | 6732 |
| 25° | 21304 | 10358 | 20600 | 9398 | 21304 | 9658 |
| 35° | 13164 | 3590 | 12407 | 3180 | 13164 | 8079 |
| 45° | 3784 | 1546 | 3721 | 1521 | 3784 | 3218 |
| 55° | 1420 | 1087 | 1367 | 1077 | 1420 | 1310 |
| 65° | 871 | 896 | 838 | 865 | 871 | 870 |
| 75° | 614 | 671 | 581 | 642 | 614 | 639 |
| 85° | 292 | 350 | 236 | 300 | 292 | 274 |
| 90° | 91 | 113 | 35 | 40 | 91 | 55 |
| 95° | 47 | 53 | 47 | 53 | 47 | 45 |
| 105° | 220 | 287 | 146 | 287 | 220 | 293 |
| 115° | 996 | 1215 | 1044 | 1215 | 996 | 919 |
| 125° | 737 | 785 | 836 | 786 | 737 | 672 |
| 135° | 564 | 511 | 608 | 513 | 564 | 440 |
| 145° | 488 | 483 | 521 | 486 | 488 | 308 |
| 155° | 446 | 452 | 477 | 455 | 446 | 208 |
| 165° | 436 | 438 | 453 | 440 | 436 | 124 |
| 175° | 441 | 446 | 450 | 447 | 441 | 42 |
| 180° | 446 | 446 | 446 | 446 | 446 | |



TEST NUMBER: P1444744
 CATALOG NUMBER: EHBR1-30-UNV-TA-L935-UPL40

CANDELA DISTRIBUTION (FULL):

| | 0° | 2.5° | 5° | 7.5° | 10° | 12.5° | 15° | 17.5° | 20° | 22.5° | 25° |
|--------|---------|---------|---------|---------|---------|---------|---------|---------|---------|---------|---------|
| 0° | 23817.7 | 23817.7 | 23817.7 | 23817.7 | 23817.7 | 23817.7 | 23817.7 | 23817.7 | 23817.7 | 23817.7 | 23817.7 |
| 2.5° | 23908.7 | 23906.8 | 23906.4 | 23904.7 | 23904.3 | 23904.3 | 23903.5 | 23901.5 | 23900.4 | 23897.6 | 23894.5 |
| 5° | 23997.4 | 23996.3 | 23997.0 | 23997.1 | 23995.5 | 23991.8 | 23985.9 | 23978.8 | 23969.8 | 23961.3 | 23953.7 |
| 7.5° | 24066.0 | 24067.7 | 24069.8 | 24069.4 | 24064.1 | 24055.4 | 24043.5 | 24036.8 | 24040.7 | 24053.7 | 24083.4 |
| 10° | 24078.5 | 24088.8 | 24092.8 | 24091.5 | 24081.1 | 24073.6 | 24076.5 | 24101.7 | 24151.9 | 24219.0 | 24310.6 |
| 12.5° | 24029.8 | 24042.3 | 24041.8 | 24037.7 | 24027.6 | 24037.8 | 24074.4 | 24149.5 | 24257.2 | 24389.3 | 24544.4 |
| 15° | 23892.6 | 23908.9 | 23904.3 | 23898.9 | 23892.2 | 23925.8 | 23998.9 | 24129.3 | 24295.6 | 24481.9 | 24672.7 |
| 17.5° | 23626.5 | 23646.1 | 23636.6 | 23630.4 | 23624.8 | 23687.8 | 23813.3 | 24004.3 | 24213.8 | 24424.6 | 24605.4 |
| 20° | 23164.9 | 23178.0 | 23155.3 | 23144.7 | 23153.6 | 23277.2 | 23461.9 | 23705.9 | 23926.6 | 24125.9 | 24249.6 |
| 22.5° | 22411.4 | 22427.7 | 22385.2 | 22380.2 | 22432.8 | 22622.5 | 22856.3 | 23129.0 | 23336.4 | 23494.5 | 23542.1 |
| 25° | 21304.5 | 21320.6 | 21269.9 | 21300.2 | 21389.7 | 21648.1 | 21926.5 | 22218.2 | 22395.2 | 22512.2 | 22480.0 |
| 27.5° | 19810.5 | 19825.1 | 19777.1 | 19838.9 | 19980.4 | 20319.9 | 20647.5 | 20964.0 | 21121.7 | 21203.8 | 21099.8 |
| 30° | 17926.1 | 17956.6 | 17899.8 | 17986.1 | 18202.1 | 18642.8 | 19018.2 | 19373.1 | 19530.4 | 19592.8 | 19431.1 |
| 32.5° | 15688.1 | 15731.4 | 15668.9 | 15797.2 | 16098.6 | 16628.0 | 17054.5 | 17451.0 | 17624.9 | 17696.2 | 17513.5 |
| 35° | 13163.9 | 13226.1 | 13154.3 | 13346.9 | 13718.6 | 14308.1 | 14780.4 | 15223.1 | 15429.1 | 15530.1 | 15346.1 |
| 37.5° | 10489.7 | 10548.9 | 10510.0 | 10767.0 | 11175.1 | 11786.3 | 12268.3 | 12745.8 | 12978.5 | 13130.1 | 12985.0 |
| 40° | 7864.1 | 7918.3 | 7947.7 | 8241.5 | 8625.4 | 9201.4 | 9664.4 | 10136.9 | 10397.2 | 10587.5 | 10497.9 |
| 42.5° | 5550.5 | 5605.1 | 5705.1 | 5988.6 | 6308.8 | 6785.5 | 7182.1 | 7606.4 | 7855.0 | 8057.9 | 8023.5 |
| 45° | 3783.7 | 3847.1 | 3972.3 | 4204.5 | 4436.0 | 4778.1 | 5069.3 | 5399.2 | 5602.3 | 5788.2 | 5790.4 |
| 47.5° | 2651.4 | 2696.0 | 2807.8 | 2966.3 | 3117.3 | 3545.5 | 3563.1 | 3725.2 | 3861.8 | 4000.7 | 4018.8 |
| 50° | 2043.4 | 2070.2 | 2129.5 | 2217.9 | 2303.4 | 2414.6 | 2516.3 | 2633.9 | 2717.9 | 2794.0 | 2812.2 |
| 52.5° | 1679.5 | 1696.6 | 1726.7 | 1774.6 | 1824.3 | 1884.7 | 1939.2 | 2003.7 | 2049.4 | 2090.2 | 2098.7 |
| 55° | 1419.5 | 1433.6 | 1478.6 | 1487.6 | 1544.4 | 1555.4 | 1579.6 | 1618.8 | 1645.3 | 1669.8 | 1675.9 |
| 57.5° | 1223.3 | 1233.5 | 1243.0 | 1263.4 | 1280.9 | 1306.3 | 1326.8 | 1355.0 | 1371.7 | 1389.4 | 1390.9 |
| 60° | 1068.5 | 1075.8 | 1082.6 | 1096.7 | 1108.7 | 1126.4 | 1140.4 | 1159.6 | 1171.6 | 1184.8 | 1186.4 |
| 62.5° | 953.3 | 958.5 | 963.1 | 972.4 | 980.8 | 994.4 | 1005.7 | 1021.6 | 1032.9 | 1043.1 | 1045.4 |
| 65° | 871.3 | 875.2 | 878.1 | 885.2 | 892.6 | 904.2 | 914.3 | 927.4 | 935.6 | 943.4 | 945.1 |
| 67.5° | 798.7 | 802.5 | 805.5 | 811.9 | 817.1 | 825.7 | 832.5 | 842.3 | 848.5 | 854.8 | 854.9 |
| 70° | 715.6 | 719.1 | 721.3 | 727.3 | 731.5 | 738.9 | 744.4 | 753.3 | 759.6 | 766.6 | 768.3 |
| 72.5° | 658.1 | 660.1 | 663.2 | 668.7 | 674.4 | 682.4 | 689.6 | 698.9 | 706.5 | 713.7 | 716.8 |
| 75° | 614.3 | 616.7 | 618.7 | 623.4 | 627.4 | 634.1 | 639.5 | 647.9 | 654.6 | 662.3 | 666.2 |
| 77.5° | 551.0 | 553.9 | 555.6 | 560.3 | 563.7 | 570.2 | 574.2 | 581.7 | 587.2 | 594.3 | 597.7 |
| 80° | 474.7 | 477.3 | 478.5 | 482.9 | 485.7 | 491.6 | 495.6 | 502.8 | 507.4 | 514.4 | 518.6 |
| 82.5° | 390.1 | 392.5 | 393.3 | 397.4 | 398.9 | 403.8 | 406.7 | 414.1 | 419.7 | 428.9 | 435.3 |
| 85° | 292.1 | 293.0 | 294.4 | 293.3 | 299.3 | 299.6 | 306.3 | 307.5 | 316.4 | 318.7 | 328.7 |
| 87.5° | 178.5 | 181.3 | 182.5 | 186.6 | 188.3 | 192.4 | 193.7 | 198.0 | 200.4 | 205.3 | 207.6 |
| 90° | 91.4 | 96.6 | 99.1 | 105.0 | 107.4 | 112.7 | 114.8 | 120.7 | 123.2 | 129.2 | 133.2 |
| 92.5° | 41.1 | 43.9 | 46.6 | 49.8 | 52.6 | 55.9 | 59.0 | 62.0 | 64.9 | 68.2 | 73.9 |
| 95° | 47.0 | 50.3 | 53.6 | 56.8 | 60.1 | 63.3 | 66.5 | 69.8 | 73.1 | 76.3 | 85.7 |
| 97.5° | 59.3 | 62.1 | 64.9 | 67.7 | 70.5 | 73.4 | 76.2 | 79.0 | 81.8 | 84.6 | 95.9 |
| 100° | 77.4 | 79.8 | 82.2 | 84.6 | 86.9 | 89.4 | 91.7 | 94.1 | 96.5 | 98.9 | 119.8 |
| 102.5° | 129.2 | 137.7 | 146.2 | 154.6 | 163.0 | 171.5 | 180.0 | 188.3 | 196.9 | 205.3 | 249.8 |
| 105° | 220.2 | 243.2 | 266.3 | 289.1 | 312.1 | 335.2 | 358.2 | 380.9 | 404.0 | 426.9 | 499.4 |
| 107.5° | 377.8 | 420.3 | 462.8 | 505.4 | 547.9 | 590.3 | 632.8 | 675.3 | 717.8 | 760.1 | 833.7 |
| 110° | 700.1 | 734.2 | 768.5 | 802.7 | 836.9 | 871.2 | 905.3 | 939.4 | 973.7 | 1007.7 | 1061.5 |



TEST NUMBER: P1444744
 CATALOG NUMBER: EHBR1-30-UNV-TA-L935-UPL40

CANDELA DISTRIBUTION (continued):

| | 0° | 2.5° | 5° | 7.5° | 10° | 12.5° | 15° | 17.5° | 20° | 22.5° | 25° |
|--------|-------|--------|--------|--------|--------|--------|--------|--------|--------|--------|--------|
| 112.5° | 944.6 | 960.0 | 975.6 | 991.1 | 1006.6 | 1022.0 | 1037.5 | 1052.9 | 1068.5 | 1083.9 | 1122.3 |
| 115° | 996.0 | 1001.4 | 1007.0 | 1012.5 | 1018.0 | 1023.4 | 1028.9 | 1034.2 | 1039.7 | 1045.0 | 1071.1 |
| 117.5° | 966.0 | 965.1 | 964.3 | 963.4 | 962.4 | 961.5 | 960.6 | 959.5 | 958.5 | 957.5 | 972.2 |
| 120° | 899.2 | 894.5 | 890.0 | 885.2 | 880.6 | 875.9 | 871.3 | 866.5 | 861.6 | 856.8 | 863.2 |
| 122.5° | 815.2 | 809.5 | 804.2 | 798.5 | 792.9 | 787.1 | 781.6 | 775.6 | 770.1 | 764.3 | 766.9 |
| 125° | 737.2 | 731.6 | 726.2 | 720.4 | 714.7 | 709.0 | 703.2 | 697.4 | 691.6 | 685.7 | 687.3 |
| 127.5° | 669.3 | 665.5 | 661.6 | 657.5 | 653.6 | 649.5 | 645.4 | 641.2 | 637.1 | 632.8 | 633.3 |
| 130° | 625.0 | 621.7 | 618.2 | 614.5 | 611.0 | 607.1 | 603.4 | 599.6 | 596.0 | 592.0 | 592.8 |
| 132.5° | 588.6 | 586.2 | 583.9 | 581.3 | 578.8 | 575.9 | 573.3 | 570.4 | 567.8 | 565.0 | 565.9 |
| 135° | 563.9 | 561.7 | 559.6 | 557.1 | 554.8 | 552.2 | 549.7 | 547.0 | 544.4 | 541.8 | 543.1 |
| 137.5° | 542.8 | 540.9 | 538.9 | 536.7 | 534.6 | 532.0 | 529.8 | 527.4 | 525.0 | 522.5 | 523.8 |
| 140° | 523.5 | 521.8 | 520.0 | 518.0 | 516.1 | 513.9 | 511.7 | 509.6 | 507.4 | 505.1 | 506.5 |
| 142.5° | 502.0 | 500.6 | 499.3 | 497.8 | 496.3 | 494.5 | 492.9 | 491.0 | 489.4 | 487.5 | 489.4 |
| 145° | 487.8 | 486.7 | 485.6 | 484.3 | 483.0 | 481.4 | 480.1 | 478.5 | 477.1 | 475.6 | 477.5 |
| 147.5° | 475.3 | 474.4 | 473.6 | 472.7 | 471.7 | 470.3 | 469.1 | 467.8 | 466.8 | 465.5 | 467.5 |
| 150° | 464.3 | 463.5 | 462.8 | 461.9 | 460.8 | 459.6 | 458.4 | 457.4 | 456.2 | 455.0 | 457.0 |
| 152.5° | 453.0 | 452.1 | 451.4 | 450.4 | 449.4 | 448.2 | 447.4 | 446.2 | 445.1 | 443.9 | 445.6 |
| 155° | 445.9 | 445.0 | 444.1 | 443.3 | 442.3 | 441.3 | 440.2 | 439.2 | 438.2 | 437.0 | 438.6 |
| 157.5° | 441.1 | 440.4 | 439.8 | 438.9 | 438.4 | 437.6 | 436.8 | 435.9 | 435.1 | 434.4 | 435.5 |
| 160° | 438.5 | 437.8 | 437.1 | 436.4 | 435.8 | 434.9 | 434.2 | 433.4 | 432.8 | 432.0 | 432.9 |
| 162.5° | 436.1 | 435.4 | 434.7 | 434.0 | 433.3 | 432.5 | 431.8 | 431.1 | 430.4 | 429.6 | 430.7 |
| 165° | 435.5 | 435.1 | 434.7 | 434.2 | 433.9 | 433.4 | 433.0 | 432.4 | 432.0 | 431.4 | 432.1 |
| 167.5° | 438.8 | 438.1 | 437.6 | 436.9 | 436.3 | 435.8 | 435.0 | 434.4 | 433.9 | 433.1 | 433.9 |
| 170° | 439.4 | 438.9 | 438.8 | 438.5 | 438.1 | 437.8 | 437.5 | 437.1 | 436.8 | 436.4 | 437.0 |
| 172.5° | 441.4 | 441.0 | 440.8 | 440.7 | 440.3 | 440.1 | 439.8 | 439.6 | 439.4 | 439.0 | 439.8 |
| 175° | 440.9 | 440.7 | 440.6 | 440.4 | 440.3 | 440.1 | 440.0 | 439.8 | 439.8 | 439.6 | 440.0 |
| 177.5° | 443.8 | 443.7 | 443.7 | 443.6 | 443.6 | 443.6 | 443.5 | 443.3 | 443.2 | 443.2 | 443.6 |
| 180° | 446.5 | 446.5 | 446.5 | 446.5 | 446.5 | 446.5 | 446.5 | 446.5 | 446.5 | 446.5 | 446.5 |



TEST NUMBER: P1444744
 CATALOG NUMBER: EHBR1-30-UNV-TA-L935-UPL40

CANDELA DISTRIBUTION (continued):

| | 27.5° | 30° | 32.5° | 35° | 37.5° | 40° | 42.5° | 45° | 47.5° | 50° | 52.5° |
|--------|---------|---------|---------|---------|---------|---------|---------|---------|---------|---------|---------|
| 0° | 23817.7 | 23817.7 | 23817.7 | 23817.7 | 23817.7 | 23817.7 | 23817.7 | 23817.7 | 23817.7 | 23817.7 | 23817.7 |
| 2.5° | 23892.2 | 23889.3 | 23885.3 | 23880.3 | 23876.0 | 23870.9 | 23859.0 | 23855.5 | 23859.5 | 23862.1 | 23867.5 |
| 5° | 23948.9 | 23950.7 | 23951.3 | 23962.1 | 23971.5 | 23994.9 | 24178.1 | 24250.9 | 24307.3 | 24343.0 | 24397.3 |
| 7.5° | 24120.1 | 24175.2 | 24229.7 | 24302.9 | 24366.1 | 24451.5 | 24772.1 | 24908.6 | 25005.5 | 25075.3 | 25161.1 |
| 10° | 24410.2 | 24530.4 | 24643.1 | 24775.1 | 24888.7 | 25018.8 | 25317.1 | 25450.1 | 25534.0 | 25595.1 | 25652.2 |
| 12.5° | 24702.4 | 24869.1 | 25019.8 | 25166.8 | 25289.7 | 25402.3 | 25507.3 | 25553.9 | 25557.8 | 25559.7 | 25529.5 |
| 15° | 24854.5 | 25014.0 | 25146.7 | 25243.9 | 25316.1 | 25348.0 | 25167.4 | 25072.6 | 24952.8 | 24854.1 | 24691.8 |
| 17.5° | 24758.5 | 24854.1 | 24911.5 | 24905.8 | 24876.0 | 24776.0 | 24264.2 | 23982.7 | 23703.3 | 23451.4 | 23121.3 |
| 20° | 24331.5 | 24324.2 | 24274.3 | 24133.0 | 23962.7 | 23697.9 | 22820.5 | 22314.3 | 21824.8 | 21394.9 | 20873.4 |
| 22.5° | 23537.2 | 23412.2 | 23237.9 | 22933.2 | 22594.7 | 22132.1 | 20874.7 | 20130.0 | 19448.6 | 18846.8 | 18172.4 |
| 25° | 22386.2 | 22129.1 | 21807.6 | 21323.9 | 20797.9 | 20123.1 | 18573.3 | 17647.1 | 16829.0 | 16119.5 | 15341.4 |
| 27.5° | 20913.3 | 20525.9 | 20054.9 | 19385.4 | 18672.6 | 17808.2 | 16090.0 | 15067.8 | 14189.6 | 13428.9 | 12600.8 |
| 30° | 19169.3 | 18665.6 | 18057.4 | 17226.4 | 16366.8 | 15386.3 | 13643.6 | 12608.3 | 11719.4 | 10936.9 | 10108.1 |
| 32.5° | 17198.6 | 16608.6 | 15895.9 | 14963.2 | 14033.5 | 13025.5 | 11342.5 | 10340.4 | 9491.2 | 8738.3 | 7988.3 |
| 35° | 15025.0 | 14392.2 | 13638.3 | 12687.0 | 11762.9 | 10782.8 | 9238.6 | 8335.0 | 7585.1 | 6919.6 | 6313.9 |
| 37.5° | 12693.4 | 12072.1 | 11355.5 | 10458.9 | 9602.0 | 8713.9 | 7381.4 | 6624.3 | 5994.9 | 5442.6 | 4974.9 |
| 40° | 10269.3 | 9725.5 | 9105.4 | 8330.3 | 7599.0 | 6859.4 | 5765.6 | 5164.5 | 4668.0 | 4246.7 | 3896.3 |
| 42.5° | 7874.6 | 7453.4 | 6977.8 | 6365.3 | 5805.7 | 5242.5 | 4400.7 | 3955.3 | 3587.5 | 3284.3 | 3036.6 |
| 45° | 5713.3 | 5431.5 | 5112.6 | 4686.7 | 4299.5 | 3906.7 | 3307.6 | 2994.6 | 2755.1 | 2559.5 | 2394.2 |
| 47.5° | 3993.9 | 3830.4 | 3820.4 | 3426.9 | 3143.0 | 2902.8 | 2516.8 | 2319.1 | 2172.4 | 2053.9 | 1949.2 |
| 50° | 2804.8 | 2725.7 | 2627.4 | 2487.1 | 2355.3 | 2219.5 | 1984.3 | 1864.9 | 1778.9 | 1707.1 | 1640.9 |
| 52.5° | 2096.8 | 2055.7 | 2003.4 | 1928.9 | 1857.5 | 1781.1 | 1632.3 | 1556.3 | 1529.2 | 1462.4 | 1410.0 |
| 55° | 1674.8 | 1651.2 | 1621.4 | 1577.6 | 1534.2 | 1516.8 | 1389.3 | 1332.8 | 1297.0 | 1270.7 | 1242.5 |
| 57.5° | 1391.1 | 1373.6 | 1356.0 | 1326.2 | 1301.1 | 1270.7 | 1203.0 | 1174.0 | 1152.8 | 1137.2 | 1117.7 |
| 60° | 1186.7 | 1176.1 | 1166.3 | 1148.9 | 1135.3 | 1118.9 | 1075.8 | 1059.5 | 1048.4 | 1039.0 | 1026.6 |
| 62.5° | 1047.4 | 1041.9 | 1036.8 | 1027.6 | 1020.7 | 1011.7 | 982.4 | 974.5 | 969.0 | 964.2 | 956.7 |
| 65° | 946.8 | 942.9 | 940.0 | 933.9 | 930.4 | 925.3 | 900.0 | 894.7 | 891.3 | 889.6 | 885.2 |
| 67.5° | 855.4 | 851.4 | 849.5 | 845.2 | 843.7 | 840.4 | 819.8 | 816.9 | 815.7 | 816.2 | 814.7 |
| 70° | 770.0 | 768.3 | 769.2 | 768.5 | 770.5 | 771.0 | 758.5 | 758.4 | 759.8 | 762.4 | 762.7 |
| 72.5° | 718.8 | 718.8 | 719.8 | 720.2 | 722.1 | 723.0 | 712.6 | 712.0 | 712.6 | 714.5 | 714.6 |
| 75° | 670.0 | 670.9 | 673.5 | 674.4 | 676.6 | 677.0 | 663.3 | 661.7 | 661.8 | 663.6 | 663.0 |
| 77.5° | 602.6 | 605.5 | 610.6 | 613.2 | 617.5 | 618.2 | 602.8 | 601.0 | 601.1 | 602.9 | 601.3 |
| 80° | 526.1 | 531.7 | 539.7 | 545.2 | 551.8 | 554.4 | 538.5 | 534.7 | 531.2 | 530.7 | 527.5 |
| 82.5° | 444.8 | 451.6 | 461.2 | 466.2 | 473.2 | 474.8 | 448.3 | 443.2 | 440.2 | 440.5 | 437.6 |
| 85° | 339.6 | 344.7 | 353.5 | 356.3 | 360.6 | 360.3 | 329.9 | 316.9 | 320.3 | 314.9 | 319.2 |
| 87.5° | 213.0 | 216.0 | 221.5 | 222.1 | 224.2 | 223.8 | 193.2 | 187.2 | 185.4 | 185.5 | 183.4 |
| 90° | 140.6 | 144.9 | 152.1 | 154.4 | 160.1 | 162.0 | 139.7 | 139.2 | 135.0 | 134.1 | 129.0 |
| 92.5° | 79.8 | 85.6 | 91.4 | 97.2 | 103.0 | 108.9 | 111.9 | 116.8 | 111.0 | 104.8 | 99.1 |
| 95° | 95.3 | 104.9 | 114.4 | 124.0 | 133.5 | 143.0 | 152.6 | 162.1 | 153.3 | 144.3 | 135.4 |
| 97.5° | 107.1 | 118.5 | 129.6 | 140.9 | 152.2 | 163.5 | 174.7 | 186.1 | 176.6 | 166.8 | 157.2 |
| 100° | 140.9 | 162.0 | 183.0 | 204.1 | 225.0 | 246.1 | 267.2 | 288.2 | 269.7 | 251.1 | 232.7 |
| 102.5° | 294.4 | 339.1 | 383.7 | 428.3 | 472.9 | 517.7 | 562.5 | 607.1 | 564.7 | 522.2 | 479.8 |
| 105° | 571.7 | 644.1 | 716.5 | 788.7 | 861.1 | 933.5 | 1006.1 | 1078.5 | 1010.7 | 942.9 | 875.2 |
| 107.5° | 907.1 | 980.6 | 1053.9 | 1127.2 | 1200.7 | 1274.1 | 1347.9 | 1421.4 | 1355.2 | 1289.0 | 1222.9 |
| 110° | 1115.1 | 1168.6 | 1222.3 | 1275.8 | 1329.4 | 1383.1 | 1437.2 | 1490.8 | 1451.2 | 1411.4 | 1371.8 |



TEST NUMBER: P1444744
 CATALOG NUMBER: EHBR1-30-UNV-TA-L935-UPL40

CANDELA DISTRIBUTION (continued):

| | 27.5° | 30° | 32.5° | 35° | 37.5° | 40° | 42.5° | 45° | 47.5° | 50° | 52.5° |
|--------|--------|--------|--------|--------|--------|--------|--------|--------|--------|--------|--------|
| 112.5° | 1160.6 | 1199.1 | 1237.4 | 1275.7 | 1313.9 | 1352.3 | 1391.5 | 1430.0 | 1410.1 | 1390.1 | 1370.4 |
| 115° | 1096.8 | 1122.9 | 1148.8 | 1174.6 | 1200.6 | 1226.4 | 1253.2 | 1279.4 | 1273.1 | 1266.9 | 1260.6 |
| 117.5° | 986.7 | 1001.4 | 1016.0 | 1030.5 | 1044.9 | 1059.5 | 1075.4 | 1090.0 | 1091.2 | 1092.5 | 1093.8 |
| 120° | 869.4 | 875.8 | 881.9 | 888.2 | 894.3 | 900.5 | 908.2 | 914.8 | 920.3 | 925.7 | 931.3 |
| 122.5° | 769.4 | 771.9 | 774.3 | 776.8 | 779.2 | 781.7 | 785.8 | 788.7 | 792.6 | 796.6 | 800.5 |
| 125° | 688.5 | 689.9 | 691.2 | 692.5 | 693.7 | 695.1 | 698.3 | 700.0 | 700.5 | 700.9 | 701.3 |
| 127.5° | 633.8 | 634.2 | 634.6 | 635.1 | 635.3 | 635.8 | 638.2 | 639.1 | 637.1 | 635.1 | 633.0 |
| 130° | 593.7 | 594.5 | 595.2 | 596.0 | 596.8 | 597.6 | 600.6 | 602.0 | 598.2 | 594.4 | 590.6 |
| 132.5° | 566.8 | 567.9 | 568.7 | 569.9 | 570.8 | 571.7 | 575.2 | 576.7 | 572.3 | 567.8 | 563.5 |
| 135° | 544.1 | 545.3 | 546.5 | 547.7 | 548.8 | 550.1 | 553.9 | 555.8 | 551.7 | 547.3 | 543.1 |
| 137.5° | 524.8 | 526.0 | 527.1 | 528.6 | 529.7 | 530.9 | 535.0 | 536.9 | 533.7 | 530.2 | 527.0 |
| 140° | 508.0 | 509.4 | 510.8 | 512.3 | 513.7 | 515.3 | 519.8 | 522.0 | 519.4 | 516.8 | 514.2 |
| 142.5° | 491.1 | 493.1 | 495.0 | 497.0 | 498.9 | 501.0 | 506.3 | 509.0 | 507.2 | 505.1 | 503.3 |
| 145° | 479.5 | 481.9 | 484.0 | 486.3 | 488.5 | 490.9 | 496.7 | 499.7 | 498.7 | 497.5 | 496.3 |
| 147.5° | 469.1 | 471.3 | 473.3 | 475.3 | 477.4 | 479.7 | 485.6 | 488.6 | 488.1 | 487.2 | 486.6 |
| 150° | 458.8 | 461.0 | 463.0 | 465.0 | 467.3 | 469.6 | 476.1 | 479.4 | 478.8 | 478.2 | 477.5 |
| 152.5° | 447.5 | 449.4 | 451.2 | 453.2 | 455.1 | 457.2 | 464.8 | 467.9 | 467.6 | 466.9 | 466.4 |
| 155° | 439.9 | 441.4 | 442.7 | 444.4 | 445.8 | 447.6 | 455.4 | 458.4 | 458.1 | 457.9 | 457.6 |
| 157.5° | 436.5 | 437.4 | 438.4 | 439.6 | 440.7 | 441.8 | 449.7 | 452.7 | 452.3 | 452.1 | 451.8 |
| 160° | 433.7 | 434.5 | 435.2 | 436.2 | 437.0 | 437.9 | 446.0 | 448.6 | 448.5 | 448.1 | 447.8 |
| 162.5° | 431.8 | 433.0 | 434.0 | 435.0 | 436.1 | 437.3 | 445.5 | 448.5 | 448.0 | 447.5 | 447.0 |
| 165° | 432.9 | 433.5 | 434.1 | 434.9 | 435.5 | 436.3 | 443.7 | 446.2 | 446.0 | 445.6 | 445.4 |
| 167.5° | 434.5 | 435.3 | 436.0 | 436.9 | 437.6 | 438.5 | 445.5 | 447.8 | 447.6 | 447.3 | 447.1 |
| 170° | 437.5 | 438.2 | 438.8 | 439.5 | 440.1 | 440.9 | 446.6 | 448.6 | 448.4 | 447.7 | 447.4 |
| 172.5° | 440.5 | 441.3 | 441.9 | 442.7 | 443.3 | 444.1 | 449.1 | 450.9 | 450.6 | 450.2 | 449.7 |
| 175° | 440.6 | 441.0 | 441.6 | 442.3 | 442.8 | 443.4 | 447.3 | 448.6 | 448.5 | 448.4 | 448.2 |
| 177.5° | 444.0 | 444.3 | 444.7 | 445.2 | 445.6 | 446.0 | 448.5 | 449.4 | 449.3 | 449.3 | 449.2 |
| 180° | 446.5 | 446.5 | 446.5 | 446.5 | 446.5 | 446.5 | 446.5 | 446.5 | 446.5 | 446.5 | 446.5 |



TEST NUMBER: P1444744
 CATALOG NUMBER: EHBR1-30-UNV-TA-L935-UPL40

CANDELA DISTRIBUTION (continued):

| | 55° | 57.5° | 60° | 62.5° | 65° | 67.5° | 70° | 72.5° | 75° | 77.5° | 80° |
|--------|---------|---------|---------|---------|---------|---------|---------|---------|---------|---------|---------|
| 0° | 23817.7 | 23817.7 | 23817.7 | 23817.7 | 23817.7 | 23817.7 | 23817.7 | 23817.7 | 23817.7 | 23817.7 | 23817.7 |
| 2.5° | 23868.8 | 23877.2 | 23878.4 | 23888.2 | 23887.5 | 23899.1 | 23897.3 | 23906.8 | 23901.2 | 23909.1 | 23902.4 |
| 5° | 24429.5 | 24480.3 | 24506.9 | 24556.4 | 24572.1 | 24616.5 | 24629.1 | 24669.6 | 24671.3 | 24703.5 | 24696.1 |
| 7.5° | 25222.1 | 25296.9 | 25341.4 | 25402.8 | 25433.9 | 25485.0 | 25507.5 | 25545.2 | 25557.5 | 25587.5 | 25589.7 |
| 10° | 25695.3 | 25731.7 | 25757.1 | 25774.3 | 25789.9 | 25797.2 | 25805.7 | 25803.5 | 25805.7 | 25802.4 | 25809.7 |
| 12.5° | 25509.2 | 25456.1 | 25420.9 | 25354.4 | 25315.8 | 25242.3 | 25206.1 | 25135.4 | 25109.8 | 25049.0 | 25040.2 |
| 15° | 24566.3 | 24381.2 | 24250.3 | 24060.0 | 23940.4 | 23753.2 | 23643.7 | 23474.7 | 23397.6 | 23263.4 | 23228.1 |
| 17.5° | 22847.8 | 22504.2 | 22238.1 | 21896.8 | 21660.0 | 21341.1 | 21140.5 | 20876.5 | 20731.9 | 20519.0 | 20445.3 |
| 20° | 20438.7 | 19930.1 | 19531.0 | 19055.7 | 18715.4 | 18291.5 | 18020.3 | 17678.0 | 17479.3 | 17217.8 | 17111.9 |
| 22.5° | 17610.2 | 16976.9 | 16478.6 | 15917.0 | 15506.6 | 15034.2 | 14709.1 | 14338.8 | 14122.6 | 13838.6 | 13712.8 |
| 25° | 14694.9 | 13996.5 | 13442.5 | 12850.8 | 12417.2 | 11943.6 | 11618.4 | 11254.7 | 11031.0 | 10761.3 | 10636.3 |
| 27.5° | 11906.6 | 11199.8 | 10664.3 | 10114.2 | 9716.4 | 9289.1 | 8995.8 | 8678.1 | 8479.6 | 8249.4 | 8131.9 |
| 30° | 9446.1 | 8822.7 | 8367.0 | 7910.4 | 7579.5 | 7232.5 | 6988.7 | 6725.5 | 6551.3 | 6354.2 | 6242.2 |
| 32.5° | 7441.4 | 6960.1 | 6603.3 | 6241.1 | 5970.3 | 5680.2 | 5469.5 | 5237.3 | 5080.1 | 4904.1 | 4802.6 |
| 35° | 5893.5 | 5519.5 | 5235.0 | 4936.8 | 4704.0 | 4457.1 | 4271.4 | 4071.0 | 3929.9 | 3778.4 | 3690.8 |
| 37.5° | 4656.4 | 4359.1 | 4124.9 | 3877.2 | 3686.1 | 3481.5 | 3412.6 | 3182.6 | 3036.4 | 2915.4 | 2831.6 |
| 40° | 3654.4 | 3417.9 | 3224.2 | 3034.8 | 2878.9 | 2723.7 | 2599.2 | 2476.3 | 2381.9 | 2295.4 | 2235.6 |
| 42.5° | 2853.8 | 2682.5 | 2541.0 | 2402.2 | 2288.5 | 2175.5 | 2085.2 | 2000.5 | 1937.0 | 1880.5 | 1841.8 |
| 45° | 2268.6 | 2150.8 | 2052.5 | 1954.8 | 1874.6 | 1799.1 | 1738.3 | 1684.3 | 1643.3 | 1609.3 | 1585.2 |
| 47.5° | 1863.8 | 1783.1 | 1713.7 | 1647.8 | 1593.3 | 1543.8 | 1503.1 | 1489.9 | 1445.8 | 1416.0 | 1404.7 |
| 50° | 1583.9 | 1535.2 | 1482.5 | 1433.9 | 1397.5 | 1361.3 | 1334.9 | 1309.1 | 1292.5 | 1278.8 | 1274.8 |
| 52.5° | 1375.1 | 1337.8 | 1308.6 | 1277.7 | 1253.7 | 1228.0 | 1209.8 | 1192.5 | 1183.5 | 1176.3 | 1175.4 |
| 55° | 1219.8 | 1193.8 | 1174.3 | 1153.7 | 1139.3 | 1124.2 | 1114.8 | 1105.7 | 1101.7 | 1098.1 | 1098.4 |
| 57.5° | 1102.4 | 1085.0 | 1072.3 | 1058.9 | 1051.2 | 1043.9 | 1041.6 | 1039.2 | 1040.5 | 1041.0 | 1043.0 |
| 60° | 1016.7 | 1005.4 | 997.5 | 989.8 | 986.5 | 984.2 | 986.0 | 988.0 | 992.2 | 995.5 | 998.5 |
| 62.5° | 951.1 | 944.7 | 940.8 | 936.7 | 936.3 | 936.5 | 940.0 | 943.4 | 948.7 | 952.6 | 955.5 |
| 65° | 883.6 | 879.9 | 878.7 | 876.0 | 877.3 | 878.1 | 882.4 | 885.0 | 890.2 | 893.3 | 897.0 |
| 67.5° | 815.3 | 814.5 | 815.2 | 815.2 | 817.7 | 819.7 | 823.8 | 826.8 | 831.2 | 834.0 | 837.0 |
| 70° | 764.9 | 765.3 | 767.2 | 767.5 | 770.1 | 771.5 | 775.0 | 777.0 | 780.9 | 783.3 | 787.0 |
| 72.5° | 716.0 | 715.2 | 715.6 | 714.5 | 715.4 | 715.0 | 716.9 | 717.9 | 721.3 | 723.2 | 727.5 |
| 75° | 663.8 | 661.6 | 661.1 | 658.7 | 658.8 | 657.1 | 657.9 | 657.8 | 660.0 | 660.9 | 664.1 |
| 77.5° | 600.8 | 597.1 | 595.3 | 591.3 | 591.2 | 589.7 | 591.3 | 592.3 | 596.2 | 598.0 | 601.6 |
| 80° | 525.4 | 519.6 | 516.9 | 512.3 | 513.2 | 512.9 | 516.7 | 519.7 | 524.4 | 525.3 | 529.9 |
| 82.5° | 436.7 | 430.8 | 428.0 | 423.4 | 424.5 | 424.6 | 428.1 | 428.7 | 432.9 | 434.7 | 439.9 |
| 85° | 312.7 | 314.9 | 308.7 | 309.1 | 307.8 | 310.2 | 312.7 | 315.7 | 319.1 | 324.8 | 329.3 |
| 87.5° | 184.2 | 183.4 | 185.5 | 185.8 | 189.0 | 190.7 | 195.8 | 198.7 | 204.5 | 208.9 | 217.1 |
| 90° | 127.1 | 122.0 | 121.6 | 118.5 | 119.5 | 116.6 | 117.7 | 114.7 | 116.5 | 115.2 | 117.9 |
| 92.5° | 92.6 | 86.7 | 80.4 | 74.5 | 68.2 | 62.5 | 59.4 | 56.8 | 53.7 | 51.3 | 48.0 |
| 95° | 126.5 | 117.6 | 108.7 | 99.8 | 90.9 | 82.0 | 78.8 | 75.5 | 72.2 | 69.0 | 65.8 |
| 97.5° | 147.7 | 138.1 | 128.6 | 119.0 | 109.4 | 99.9 | 97.7 | 95.5 | 93.4 | 91.2 | 89.0 |
| 100° | 214.2 | 195.7 | 177.3 | 158.7 | 140.3 | 121.8 | 120.1 | 118.4 | 116.6 | 114.9 | 113.1 |
| 102.5° | 437.5 | 395.2 | 352.8 | 310.4 | 268.1 | 225.8 | 218.4 | 211.0 | 203.7 | 196.2 | 188.9 |
| 105° | 807.3 | 739.5 | 671.7 | 603.9 | 536.2 | 468.4 | 448.2 | 427.9 | 407.7 | 387.5 | 367.3 |
| 107.5° | 1156.7 | 1090.7 | 1024.6 | 958.5 | 892.5 | 826.4 | 794.4 | 762.5 | 730.4 | 698.5 | 666.7 |
| 110° | 1331.9 | 1292.2 | 1252.6 | 1212.9 | 1173.3 | 1133.7 | 1103.2 | 1072.8 | 1042.3 | 1011.8 | 981.4 |



TEST NUMBER: P1444744
 CATALOG NUMBER: EHBR1-30-UNV-TA-L935-UPL40

CANDELA DISTRIBUTION (continued):

| | 55° | 57.5° | 60° | 62.5° | 65° | 67.5° | 70° | 72.5° | 75° | 77.5° | 80° |
|--------|--------|--------|--------|--------|--------|--------|--------|--------|--------|--------|--------|
| 112.5° | 1350.5 | 1330.7 | 1310.9 | 1291.2 | 1271.5 | 1251.6 | 1236.8 | 1221.9 | 1207.1 | 1192.3 | 1177.3 |
| 115° | 1254.3 | 1248.1 | 1241.9 | 1235.7 | 1229.6 | 1223.4 | 1222.3 | 1221.5 | 1220.3 | 1219.4 | 1218.4 |
| 117.5° | 1095.0 | 1096.4 | 1097.6 | 1099.0 | 1100.4 | 1101.7 | 1109.7 | 1117.6 | 1125.7 | 1133.8 | 1141.9 |
| 120° | 936.8 | 942.4 | 947.8 | 953.5 | 959.0 | 964.7 | 975.3 | 986.1 | 996.8 | 1007.7 | 1018.7 |
| 122.5° | 804.3 | 808.3 | 812.1 | 816.1 | 820.1 | 824.1 | 834.6 | 845.3 | 855.9 | 866.7 | 877.8 |
| 125° | 701.5 | 701.9 | 702.3 | 702.6 | 702.9 | 703.5 | 712.2 | 721.1 | 730.0 | 739.0 | 747.9 |
| 127.5° | 630.9 | 628.7 | 626.6 | 624.6 | 622.4 | 620.5 | 625.7 | 631.0 | 636.2 | 641.7 | 647.0 |
| 130° | 586.7 | 582.8 | 578.9 | 575.1 | 571.1 | 567.3 | 569.4 | 571.6 | 573.8 | 576.1 | 578.4 |
| 132.5° | 558.8 | 554.4 | 549.8 | 545.2 | 540.7 | 536.2 | 536.3 | 536.5 | 536.5 | 536.8 | 537.2 |
| 135° | 538.8 | 534.6 | 530.2 | 525.9 | 521.5 | 517.3 | 516.3 | 515.2 | 514.4 | 513.5 | 512.7 |
| 137.5° | 523.6 | 520.1 | 516.8 | 513.5 | 509.9 | 506.5 | 505.0 | 503.7 | 502.2 | 501.1 | 499.7 |
| 140° | 511.4 | 508.8 | 506.0 | 503.3 | 500.7 | 498.0 | 496.7 | 495.6 | 494.5 | 493.5 | 492.4 |
| 142.5° | 501.2 | 499.3 | 497.3 | 495.4 | 493.3 | 491.4 | 490.2 | 489.1 | 488.1 | 487.1 | 486.0 |
| 145° | 495.0 | 493.8 | 492.5 | 491.2 | 490.1 | 488.9 | 487.9 | 487.1 | 486.2 | 485.5 | 484.9 |
| 147.5° | 486.0 | 485.2 | 484.4 | 483.7 | 482.8 | 482.1 | 481.5 | 481.2 | 480.4 | 480.1 | 479.5 |
| 150° | 476.8 | 476.1 | 475.4 | 474.9 | 474.0 | 473.4 | 473.0 | 472.8 | 472.5 | 472.4 | 472.2 |
| 152.5° | 465.6 | 465.0 | 464.3 | 463.8 | 463.0 | 462.4 | 462.1 | 462.0 | 461.8 | 461.7 | 461.3 |
| 155° | 457.2 | 456.8 | 456.3 | 456.0 | 455.4 | 455.2 | 454.7 | 454.3 | 454.0 | 453.6 | 453.2 |
| 157.5° | 451.4 | 451.2 | 450.7 | 450.4 | 449.9 | 449.5 | 449.2 | 448.8 | 448.4 | 448.1 | 447.7 |
| 160° | 447.5 | 447.2 | 446.7 | 446.5 | 446.1 | 445.7 | 445.1 | 444.6 | 443.9 | 443.5 | 442.7 |
| 162.5° | 446.4 | 445.8 | 445.3 | 444.7 | 444.1 | 443.6 | 443.2 | 442.8 | 442.5 | 442.1 | 441.7 |
| 165° | 445.0 | 444.6 | 444.3 | 443.9 | 443.7 | 443.4 | 442.7 | 442.2 | 441.6 | 441.1 | 440.4 |
| 167.5° | 446.7 | 446.5 | 446.1 | 445.8 | 445.4 | 445.1 | 444.6 | 444.0 | 443.5 | 442.8 | 442.2 |
| 170° | 447.0 | 446.4 | 446.0 | 445.5 | 444.9 | 444.5 | 444.0 | 443.4 | 442.8 | 442.4 | 441.7 |
| 172.5° | 449.4 | 449.0 | 448.6 | 448.3 | 447.6 | 447.3 | 446.9 | 446.4 | 445.9 | 445.4 | 445.0 |
| 175° | 448.1 | 448.0 | 447.9 | 447.6 | 447.5 | 447.4 | 447.2 | 447.1 | 446.9 | 446.8 | 446.5 |
| 177.5° | 449.2 | 449.1 | 449.1 | 448.9 | 448.8 | 448.8 | 448.5 | 448.3 | 448.0 | 447.7 | 447.5 |
| 180° | 446.5 | 446.5 | 446.5 | 446.5 | 446.5 | 446.5 | 446.5 | 446.5 | 446.5 | 446.5 | 446.5 |



TEST NUMBER: P1444744
 CATALOG NUMBER: EHBR1-30-UNV-TA-L935-UPL40

CANDELA DISTRIBUTION (continued):

| | 82.5° | 85° | 87.5° | 90° | 92.5° | 95° | 97.5° | 100° | 102.5° | 105° | 107.5° |
|--------|---------|---------|---------|---------|---------|---------|---------|---------|---------|---------|---------|
| 0° | 23817.7 | 23817.7 | 23817.7 | 23817.7 | 23817.7 | 23817.7 | 23817.7 | 23817.7 | 23817.7 | 23817.7 | 23817.7 |
| 2.5° | 23909.3 | 23903.3 | 23906.2 | 23894.9 | 23897.6 | 23884.1 | 23882.9 | 23867.5 | 23866.1 | 23851.7 | 23846.3 |
| 5° | 24718.9 | 24705.5 | 24720.6 | 24697.2 | 24701.7 | 24671.3 | 24668.7 | 24629.4 | 24615.8 | 24566.5 | 24545.2 |
| 7.5° | 25608.5 | 25603.5 | 25612.7 | 25593.1 | 25592.5 | 25565.3 | 25554.1 | 25518.8 | 25496.9 | 25445.2 | 25412.1 |
| 10° | 25803.5 | 25808.1 | 25800.6 | 25802.4 | 25791.8 | 25788.9 | 25778.0 | 25771.1 | 25753.4 | 25740.0 | 25720.3 |
| 12.5° | 24994.1 | 24998.9 | 24968.1 | 24987.7 | 24972.2 | 25008.3 | 25005.4 | 25047.9 | 25054.5 | 25108.3 | 25128.7 |
| 15° | 23123.5 | 23117.7 | 23058.5 | 23095.8 | 23075.8 | 23155.1 | 23172.8 | 23279.4 | 23336.4 | 23473.4 | 23557.5 |
| 17.5° | 20297.8 | 20282.6 | 20199.1 | 20244.6 | 20221.5 | 20338.3 | 20377.5 | 20548.0 | 20654.4 | 20875.0 | 21032.2 |
| 20° | 16929.4 | 16900.1 | 16802.5 | 16855.7 | 16831.9 | 16964.7 | 17020.7 | 17226.8 | 17363.9 | 17656.1 | 17864.0 |
| 22.5° | 13519.1 | 13472.9 | 13377.3 | 13427.0 | 13404.5 | 13542.0 | 13614.9 | 13821.7 | 13978.9 | 14278.8 | 14521.4 |
| 25° | 10456.7 | 10415.5 | 10323.2 | 10357.9 | 10349.6 | 10465.9 | 10530.6 | 10726.3 | 10880.7 | 11166.4 | 11398.0 |
| 27.5° | 7975.6 | 7932.7 | 7849.3 | 7873.9 | 7865.4 | 7964.5 | 8025.6 | 8189.0 | 8321.8 | 8562.4 | 8765.7 |
| 30° | 6104.1 | 6052.5 | 5981.7 | 5995.3 | 5989.5 | 6069.8 | 6126.8 | 6264.5 | 6378.3 | 6581.6 | 6756.8 |
| 32.5° | 4678.8 | 4626.9 | 4561.8 | 4568.2 | 4559.7 | 4622.6 | 4669.7 | 4789.3 | 4888.6 | 5061.4 | 5213.9 |
| 35° | 3579.9 | 3640.5 | 3501.6 | 3589.6 | 3498.0 | 3632.6 | 3584.2 | 3658.9 | 3744.3 | 3890.0 | 4017.1 |
| 37.5° | 2752.2 | 2709.8 | 2674.1 | 2670.3 | 2670.1 | 2701.3 | 2738.1 | 2810.1 | 2885.3 | 2993.8 | 3105.9 |
| 40° | 2180.9 | 2151.3 | 2128.2 | 2126.4 | 2128.2 | 2150.3 | 2177.5 | 2227.3 | 2282.3 | 2360.3 | 2442.6 |
| 42.5° | 1808.9 | 1789.2 | 1775.2 | 1774.2 | 1778.7 | 1794.4 | 1813.3 | 1842.8 | 1878.6 | 1929.2 | 1985.7 |
| 45° | 1565.6 | 1554.6 | 1546.8 | 1546.5 | 1548.5 | 1556.6 | 1567.5 | 1586.0 | 1608.6 | 1640.2 | 1675.9 |
| 47.5° | 1394.8 | 1392.2 | 1387.3 | 1387.5 | 1385.3 | 1388.7 | 1389.9 | 1400.3 | 1412.3 | 1436.1 | 1482.8 |
| 50° | 1270.6 | 1270.6 | 1267.2 | 1267.0 | 1263.9 | 1263.7 | 1261.1 | 1265.1 | 1270.8 | 1285.5 | 1300.4 |
| 52.5° | 1172.3 | 1172.0 | 1168.3 | 1167.6 | 1164.3 | 1164.1 | 1161.8 | 1163.5 | 1164.2 | 1171.6 | 1180.6 |
| 55° | 1095.6 | 1093.2 | 1088.5 | 1087.0 | 1085.7 | 1087.6 | 1086.7 | 1086.8 | 1085.8 | 1089.0 | 1091.6 |
| 57.5° | 1040.5 | 1037.5 | 1032.9 | 1031.6 | 1031.3 | 1033.6 | 1033.7 | 1032.9 | 1028.7 | 1025.9 | 1021.9 |
| 60° | 996.9 | 993.9 | 989.0 | 987.7 | 988.4 | 991.6 | 991.4 | 988.8 | 982.6 | 977.3 | 971.0 |
| 62.5° | 954.0 | 952.8 | 950.3 | 950.0 | 949.4 | 949.9 | 947.7 | 944.8 | 938.8 | 933.1 | 926.3 |
| 65° | 896.5 | 897.2 | 895.4 | 895.6 | 893.4 | 893.0 | 889.7 | 886.9 | 880.8 | 875.6 | 868.6 |
| 67.5° | 836.9 | 837.4 | 835.8 | 835.8 | 834.7 | 834.9 | 832.8 | 830.3 | 825.0 | 820.9 | 815.4 |
| 70° | 787.7 | 789.0 | 788.1 | 788.3 | 787.0 | 786.4 | 783.2 | 780.8 | 775.4 | 771.8 | 767.0 |
| 72.5° | 728.9 | 731.5 | 731.4 | 732.0 | 730.0 | 728.9 | 725.1 | 722.0 | 717.1 | 714.3 | 710.4 |
| 75° | 665.3 | 668.8 | 669.7 | 671.2 | 668.2 | 666.6 | 662.4 | 660.0 | 656.0 | 654.4 | 651.8 |
| 77.5° | 603.3 | 607.1 | 610.7 | 614.0 | 609.1 | 604.8 | 599.6 | 595.6 | 590.0 | 587.8 | 583.9 |
| 80° | 533.6 | 540.4 | 548.3 | 555.0 | 546.3 | 537.5 | 528.9 | 522.6 | 515.1 | 512.0 | 507.0 |
| 82.5° | 442.7 | 449.5 | 454.2 | 458.5 | 452.3 | 445.9 | 437.7 | 432.0 | 424.0 | 421.0 | 415.2 |
| 85° | 336.3 | 344.9 | 347.6 | 349.9 | 346.0 | 342.6 | 334.8 | 324.3 | 319.2 | 311.1 | 307.0 |
| 87.5° | 221.2 | 226.3 | 227.3 | 228.1 | 225.7 | 224.0 | 219.0 | 214.1 | 205.3 | 198.9 | 191.2 |
| 90° | 115.7 | 117.2 | 113.3 | 112.6 | 111.4 | 113.5 | 110.3 | 110.4 | 105.0 | 104.1 | 99.6 |
| 92.5° | 45.4 | 42.3 | 39.6 | 36.7 | 40.0 | 42.4 | 45.6 | 48.0 | 51.2 | 53.7 | 56.8 |
| 95° | 62.5 | 59.3 | 56.0 | 52.7 | 55.4 | 57.9 | 60.5 | 63.2 | 65.7 | 68.3 | 71.0 |
| 97.5° | 86.8 | 84.7 | 82.5 | 80.3 | 81.8 | 83.4 | 84.8 | 86.4 | 87.9 | 89.5 | 91.0 |
| 100° | 111.4 | 109.7 | 107.9 | 106.2 | 106.2 | 106.2 | 106.2 | 106.2 | 106.2 | 106.2 | 106.2 |
| 102.5° | 181.4 | 174.1 | 166.7 | 159.3 | 164.3 | 169.3 | 174.3 | 179.3 | 184.3 | 189.3 | 194.3 |
| 105° | 347.1 | 326.9 | 306.8 | 286.6 | 306.1 | 325.6 | 345.1 | 364.7 | 384.2 | 404.0 | 423.4 |
| 107.5° | 634.7 | 602.8 | 570.9 | 539.0 | 574.7 | 610.2 | 645.9 | 681.5 | 717.0 | 752.6 | 788.4 |
| 110° | 951.0 | 920.6 | 890.3 | 859.9 | 897.7 | 935.4 | 973.2 | 1010.9 | 1048.8 | 1086.5 | 1124.5 |



TEST NUMBER: P1444744
 CATALOG NUMBER: EHBR1-30-UNV-TA-L935-UPL40

CANDELA DISTRIBUTION (continued):

| | 82.5° | 85° | 87.5° | 90° | 92.5° | 95° | 97.5° | 100° | 102.5° | 105° | 107.5° |
|--------|--------|--------|--------|--------|--------|--------|--------|--------|--------|--------|--------|
| 112.5° | 1162.5 | 1147.9 | 1133.1 | 1118.3 | 1142.6 | 1166.9 | 1191.2 | 1215.7 | 1240.0 | 1264.4 | 1288.7 |
| 115° | 1217.5 | 1216.6 | 1215.7 | 1214.8 | 1226.4 | 1237.9 | 1249.4 | 1261.0 | 1272.5 | 1284.0 | 1295.7 |
| 117.5° | 1150.0 | 1158.1 | 1166.4 | 1174.6 | 1178.3 | 1182.0 | 1185.8 | 1189.5 | 1193.4 | 1197.2 | 1201.0 |
| 120° | 1029.7 | 1040.5 | 1051.5 | 1062.6 | 1061.0 | 1059.5 | 1058.1 | 1056.6 | 1055.3 | 1053.9 | 1052.8 |
| 122.5° | 888.7 | 899.5 | 910.6 | 921.6 | 918.3 | 915.0 | 911.9 | 908.7 | 905.7 | 902.5 | 899.5 |
| 125° | 757.1 | 766.2 | 775.5 | 784.7 | 781.4 | 778.2 | 775.0 | 772.0 | 768.9 | 765.8 | 763.0 |
| 127.5° | 652.7 | 658.4 | 664.0 | 669.8 | 668.2 | 666.7 | 665.5 | 664.1 | 662.8 | 661.6 | 660.6 |
| 130° | 580.9 | 583.4 | 586.1 | 588.8 | 589.2 | 589.7 | 590.2 | 590.8 | 591.7 | 592.4 | 593.3 |
| 132.5° | 537.7 | 538.2 | 538.8 | 539.5 | 541.3 | 543.0 | 545.0 | 546.9 | 549.1 | 551.0 | 553.6 |
| 135° | 512.1 | 511.5 | 511.0 | 510.6 | 513.3 | 515.8 | 518.5 | 521.3 | 524.4 | 527.5 | 530.6 |
| 137.5° | 498.8 | 497.7 | 496.8 | 495.9 | 498.5 | 501.0 | 503.8 | 506.6 | 509.5 | 512.6 | 515.8 |
| 140° | 491.5 | 490.7 | 490.1 | 489.2 | 491.9 | 494.4 | 497.1 | 499.9 | 502.9 | 506.0 | 509.1 |
| 142.5° | 485.2 | 484.3 | 483.7 | 483.1 | 485.2 | 487.7 | 490.3 | 492.8 | 495.6 | 498.1 | 501.0 |
| 145° | 484.2 | 483.5 | 483.1 | 482.6 | 484.3 | 486.0 | 487.9 | 489.8 | 491.8 | 493.7 | 496.0 |
| 147.5° | 479.2 | 478.8 | 478.6 | 478.4 | 479.6 | 480.9 | 482.3 | 483.5 | 485.2 | 486.6 | 488.2 |
| 150° | 472.2 | 471.9 | 471.9 | 471.9 | 472.7 | 473.5 | 474.5 | 475.2 | 476.3 | 477.2 | 478.5 |
| 152.5° | 461.4 | 461.1 | 461.3 | 461.2 | 462.0 | 462.8 | 463.7 | 464.4 | 465.4 | 466.2 | 467.3 |
| 155° | 453.0 | 452.7 | 452.4 | 452.2 | 452.4 | 452.7 | 453.1 | 453.3 | 453.9 | 454.3 | 454.7 |
| 157.5° | 447.5 | 447.2 | 447.0 | 446.6 | 446.6 | 446.6 | 446.7 | 446.8 | 447.0 | 447.0 | 447.2 |
| 160° | 442.4 | 441.8 | 441.3 | 440.8 | 441.1 | 441.2 | 441.5 | 441.6 | 441.9 | 442.2 | 442.5 |
| 162.5° | 441.4 | 441.0 | 440.8 | 440.5 | 440.3 | 439.9 | 439.8 | 439.4 | 439.2 | 439.0 | 438.9 |
| 165° | 439.8 | 439.3 | 438.8 | 438.2 | 438.2 | 438.2 | 438.1 | 438.0 | 438.1 | 438.0 | 438.1 |
| 167.5° | 441.7 | 441.1 | 440.6 | 440.0 | 439.7 | 439.1 | 438.8 | 438.4 | 437.9 | 437.6 | 437.4 |
| 170° | 441.3 | 440.7 | 440.3 | 439.8 | 439.7 | 439.4 | 439.3 | 439.1 | 439.0 | 438.9 | 438.9 |
| 172.5° | 444.6 | 444.1 | 443.6 | 443.3 | 443.1 | 442.9 | 442.8 | 442.7 | 442.7 | 442.7 | 442.6 |
| 175° | 446.5 | 446.3 | 446.2 | 446.1 | 445.8 | 445.6 | 445.3 | 445.1 | 444.8 | 444.6 | 444.4 |
| 177.5° | 447.1 | 446.8 | 446.5 | 446.4 | 446.3 | 446.3 | 446.3 | 446.3 | 446.3 | 446.2 | 446.1 |
| 180° | 446.5 | 446.5 | 446.5 | 446.5 | 446.5 | 446.5 | 446.5 | 446.5 | 446.5 | 446.5 | 446.5 |



TEST NUMBER: P1444744
 CATALOG NUMBER: EHBR1-30-UNV-TA-L935-UPL40

CANDELA DISTRIBUTION (continued):

| | 110° | 112.5° | 115° | 117.5° | 120° | 122.5° | 125° | 127.5° | 130° | 132.5° | 135° |
|--------|---------|---------|---------|---------|---------|---------|---------|---------|---------|---------|---------|
| 0° | 23817.7 | 23817.7 | 23817.7 | 23817.7 | 23817.7 | 23817.7 | 23817.7 | 23817.7 | 23817.7 | 23817.7 | 23817.7 |
| 2.5° | 23830.8 | 23824.6 | 23808.1 | 23799.9 | 23784.7 | 23777.0 | 23765.1 | 23757.4 | 23747.8 | 23740.7 | 23736.9 |
| 5° | 24491.1 | 24460.6 | 24399.6 | 24361.9 | 24296.1 | 24252.6 | 24187.1 | 24139.1 | 24071.5 | 24021.6 | 23957.7 |
| 7.5° | 25350.2 | 25303.4 | 25225.2 | 25165.9 | 25073.6 | 25003.1 | 24899.6 | 24816.7 | 24702.4 | 24607.4 | 24490.6 |
| 10° | 25700.0 | 25672.7 | 25637.5 | 25599.4 | 25548.2 | 25498.1 | 25427.4 | 25355.4 | 25259.4 | 25163.9 | 25039.1 |
| 12.5° | 25183.0 | 25208.7 | 25259.4 | 25283.0 | 25321.7 | 25334.9 | 25352.7 | 25344.3 | 25328.6 | 25289.7 | 25233.0 |
| 15° | 23719.0 | 23826.3 | 23995.8 | 24113.0 | 24277.2 | 24392.6 | 24545.2 | 24643.5 | 24756.7 | 24824.3 | 24888.5 |
| 17.5° | 21310.8 | 21518.2 | 21817.3 | 22055.9 | 22376.3 | 22636.7 | 22955.8 | 23206.5 | 23495.9 | 23718.0 | 23954.4 |
| 20° | 18226.3 | 18516.8 | 18929.6 | 19280.2 | 19744.4 | 20137.9 | 20642.2 | 21064.5 | 21557.2 | 21968.0 | 22411.3 |
| 22.5° | 14906.5 | 15248.2 | 15721.2 | 16144.1 | 16698.4 | 17193.4 | 17825.1 | 18383.6 | 19049.8 | 19646.4 | 20306.6 |
| 25° | 11774.6 | 12109.5 | 12591.4 | 13029.3 | 13627.6 | 14172.9 | 14863.1 | 15503.8 | 16276.8 | 16997.6 | 17825.1 |
| 27.5° | 9088.8 | 9386.3 | 9809.9 | 10204.1 | 10752.1 | 11287.4 | 11987.8 | 12671.1 | 13495.9 | 14270.5 | 15162.3 |
| 30° | 7019.2 | 7260.5 | 7599.9 | 7917.0 | 8356.9 | 8794.7 | 9418.7 | 10050.5 | 10871.2 | 11674.0 | 12588.3 |
| 32.5° | 5439.6 | 5645.4 | 5928.8 | 6186.1 | 6525.1 | 6855.2 | 7314.7 | 7819.6 | 8539.5 | 9308.5 | 10192.5 |
| 35° | 4210.9 | 4386.9 | 4628.1 | 4849.8 | 5128.6 | 5390.7 | 5733.5 | 6093.9 | 6643.3 | 7290.1 | 8081.2 |
| 37.5° | 3357.1 | 3428.9 | 3601.0 | 3782.7 | 4014.2 | 4229.6 | 4497.7 | 4764.3 | 5157.4 | 5667.6 | 6313.9 |
| 40° | 2553.0 | 2667.1 | 2807.1 | 2950.2 | 3125.5 | 3298.2 | 3592.5 | 3734.2 | 3992.9 | 4359.3 | 4860.9 |
| 42.5° | 2060.0 | 2140.1 | 2238.7 | 2338.2 | 2460.4 | 2580.7 | 2729.5 | 2881.1 | 3074.5 | 3322.7 | 3679.5 |
| 45° | 1723.8 | 1776.1 | 1839.7 | 1905.9 | 1986.2 | 2068.2 | 2167.9 | 2272.0 | 2403.1 | 2555.7 | 2772.4 |
| 47.5° | 1499.2 | 1528.2 | 1569.7 | 1614.9 | 1669.9 | 1726.7 | 1791.5 | 1857.9 | 1939.4 | 2029.8 | 2153.2 |
| 50° | 1324.0 | 1348.1 | 1380.3 | 1410.6 | 1448.5 | 1506.8 | 1532.5 | 1569.1 | 1618.1 | 1671.4 | 1740.3 |
| 52.5° | 1197.2 | 1213.2 | 1233.4 | 1250.8 | 1274.8 | 1296.6 | 1325.2 | 1350.4 | 1384.3 | 1416.3 | 1460.9 |
| 55° | 1098.4 | 1104.2 | 1115.7 | 1126.8 | 1143.4 | 1158.4 | 1178.0 | 1194.5 | 1216.1 | 1235.2 | 1263.3 |
| 57.5° | 1022.1 | 1022.6 | 1028.0 | 1033.8 | 1044.5 | 1053.8 | 1067.3 | 1078.2 | 1093.1 | 1105.4 | 1122.2 |
| 60° | 967.2 | 964.3 | 965.4 | 967.4 | 973.5 | 979.6 | 988.2 | 995.2 | 1004.7 | 1011.6 | 1021.1 |
| 62.5° | 921.6 | 917.0 | 916.0 | 915.5 | 918.5 | 920.6 | 925.4 | 928.8 | 934.2 | 937.1 | 942.2 |
| 65° | 864.0 | 858.7 | 856.5 | 854.0 | 854.9 | 854.2 | 855.9 | 856.0 | 858.7 | 859.4 | 862.3 |
| 67.5° | 811.7 | 807.3 | 804.5 | 801.2 | 799.7 | 797.3 | 796.2 | 793.9 | 793.6 | 791.6 | 791.1 |
| 70° | 764.0 | 759.7 | 757.3 | 754.2 | 752.7 | 749.5 | 747.5 | 743.6 | 741.4 | 737.8 | 735.8 |
| 72.5° | 708.9 | 706.4 | 705.8 | 703.6 | 703.0 | 701.3 | 700.5 | 697.8 | 696.2 | 693.1 | 691.3 |
| 75° | 651.3 | 649.2 | 649.0 | 646.9 | 646.8 | 644.7 | 644.1 | 641.2 | 639.7 | 636.6 | 635.2 |
| 77.5° | 582.6 | 579.6 | 578.7 | 576.2 | 576.9 | 575.8 | 576.7 | 574.4 | 573.5 | 570.4 | 569.4 |
| 80° | 505.3 | 501.4 | 499.7 | 496.5 | 497.4 | 495.9 | 497.4 | 497.2 | 498.4 | 495.9 | 495.5 |
| 82.5° | 413.6 | 409.4 | 408.6 | 406.3 | 407.8 | 408.0 | 411.3 | 409.5 | 410.2 | 407.9 | 408.8 |
| 85° | 301.0 | 297.8 | 293.4 | 292.8 | 289.9 | 292.9 | 289.1 | 291.7 | 287.5 | 290.4 | 286.5 |
| 87.5° | 186.6 | 180.1 | 176.6 | 171.9 | 170.2 | 165.7 | 163.9 | 160.6 | 161.5 | 160.1 | 160.9 |
| 90° | 100.0 | 96.1 | 97.8 | 96.2 | 98.7 | 97.6 | 101.1 | 101.1 | 105.0 | 105.0 | 109.1 |
| 92.5° | 59.4 | 62.2 | 67.3 | 72.8 | 77.9 | 83.0 | 88.2 | 93.6 | 98.7 | 104.0 | 109.1 |
| 95° | 73.5 | 76.1 | 83.1 | 90.0 | 97.0 | 104.0 | 110.9 | 117.9 | 124.9 | 131.8 | 138.8 |
| 97.5° | 92.5 | 94.1 | 101.1 | 107.9 | 114.9 | 121.9 | 128.8 | 135.9 | 142.9 | 149.8 | 156.8 |
| 100° | 106.2 | 106.3 | 126.1 | 145.8 | 165.5 | 185.3 | 205.1 | 224.9 | 244.7 | 264.5 | 284.2 |
| 102.5° | 199.3 | 204.3 | 254.2 | 304.2 | 354.1 | 404.0 | 454.0 | 504.0 | 553.9 | 604.0 | 654.0 |
| 105° | 443.0 | 462.6 | 538.7 | 615.0 | 691.2 | 767.5 | 843.7 | 920.1 | 996.3 | 1072.6 | 1148.9 |
| 107.5° | 823.9 | 859.7 | 928.5 | 997.4 | 1066.2 | 1135.2 | 1204.1 | 1272.9 | 1341.8 | 1410.8 | 1479.9 |
| 110° | 1162.2 | 1200.1 | 1246.2 | 1292.3 | 1338.6 | 1384.6 | 1430.8 | 1477.0 | 1523.3 | 1569.4 | 1615.7 |



TEST NUMBER: P1444744
 CATALOG NUMBER: EHBR1-30-UNV-TA-L935-UPL40

CANDELA DISTRIBUTION (continued):

| | 110° | 112.5° | 115° | 117.5° | 120° | 122.5° | 125° | 127.5° | 130° | 132.5° | 135° |
|--------|--------|--------|--------|--------|--------|--------|--------|--------|--------|--------|--------|
| 112.5° | 1313.1 | 1337.6 | 1364.4 | 1391.3 | 1418.2 | 1445.1 | 1472.0 | 1498.9 | 1526.0 | 1553.0 | 1580.0 |
| 115° | 1307.4 | 1319.0 | 1329.3 | 1339.8 | 1350.2 | 1360.8 | 1371.3 | 1381.9 | 1392.6 | 1403.1 | 1413.8 |
| 117.5° | 1204.8 | 1208.9 | 1210.3 | 1212.0 | 1213.6 | 1215.4 | 1217.1 | 1218.8 | 1220.6 | 1222.5 | 1224.2 |
| 120° | 1051.4 | 1050.2 | 1048.4 | 1046.5 | 1044.7 | 1043.1 | 1041.5 | 1039.8 | 1038.3 | 1036.7 | 1035.0 |
| 122.5° | 896.5 | 893.7 | 891.9 | 890.3 | 888.7 | 887.1 | 885.6 | 884.2 | 882.7 | 881.2 | 879.7 |
| 125° | 760.1 | 757.3 | 758.8 | 760.2 | 761.8 | 763.4 | 764.9 | 766.6 | 768.2 | 769.8 | 771.6 |
| 127.5° | 659.4 | 658.5 | 662.4 | 666.3 | 670.3 | 674.4 | 678.4 | 682.5 | 686.5 | 690.7 | 694.7 |
| 130° | 594.3 | 595.4 | 600.4 | 605.5 | 610.6 | 615.9 | 621.0 | 626.3 | 631.3 | 636.6 | 641.8 |
| 132.5° | 555.8 | 558.3 | 562.9 | 568.0 | 572.9 | 578.0 | 582.9 | 587.9 | 592.9 | 598.1 | 602.8 |
| 135° | 533.8 | 537.1 | 541.5 | 546.1 | 550.6 | 555.2 | 559.7 | 564.4 | 568.8 | 573.3 | 577.8 |
| 137.5° | 518.9 | 522.2 | 525.9 | 529.4 | 532.9 | 536.7 | 540.4 | 544.2 | 547.6 | 551.3 | 554.9 |
| 140° | 512.3 | 515.5 | 517.4 | 519.7 | 521.7 | 523.8 | 525.7 | 527.8 | 529.7 | 532.0 | 533.9 |
| 142.5° | 503.9 | 507.0 | 508.1 | 509.4 | 510.7 | 512.3 | 513.5 | 514.9 | 516.2 | 517.3 | 518.5 |
| 145° | 498.1 | 500.4 | 500.4 | 500.6 | 500.7 | 500.9 | 500.9 | 501.0 | 501.0 | 501.1 | 501.1 |
| 147.5° | 490.0 | 491.7 | 491.3 | 491.2 | 491.0 | 490.7 | 490.4 | 490.2 | 489.8 | 489.6 | 489.3 |
| 150° | 479.4 | 480.7 | 480.0 | 479.5 | 478.8 | 478.4 | 477.6 | 477.2 | 476.5 | 476.0 | 475.3 |
| 152.5° | 468.2 | 469.3 | 468.4 | 467.9 | 467.1 | 466.5 | 465.7 | 465.1 | 464.3 | 463.7 | 463.0 |
| 155° | 455.1 | 455.6 | 455.2 | 454.8 | 454.4 | 454.1 | 453.6 | 453.4 | 453.2 | 452.8 | 452.5 |
| 157.5° | 447.4 | 447.5 | 447.3 | 447.0 | 446.7 | 446.5 | 446.4 | 446.2 | 446.1 | 446.1 | 446.1 |
| 160° | 442.7 | 443.0 | 442.7 | 442.5 | 442.3 | 442.0 | 441.8 | 441.7 | 441.7 | 441.7 | 441.7 |
| 162.5° | 438.7 | 438.6 | 438.3 | 438.0 | 437.8 | 437.8 | 437.6 | 437.7 | 437.6 | 437.6 | 437.7 |
| 165° | 438.3 | 438.5 | 437.8 | 437.6 | 437.2 | 436.9 | 436.5 | 436.2 | 436.1 | 435.9 | 435.8 |
| 167.5° | 437.0 | 436.9 | 436.9 | 436.9 | 436.9 | 437.0 | 437.1 | 437.5 | 437.6 | 437.9 | 437.9 |
| 170° | 438.8 | 438.9 | 438.7 | 438.5 | 438.3 | 438.2 | 438.0 | 437.9 | 437.8 | 437.8 | 437.7 |
| 172.5° | 442.6 | 442.6 | 442.1 | 441.7 | 441.3 | 440.9 | 440.5 | 440.1 | 439.8 | 439.4 | 438.9 |
| 175° | 444.0 | 443.8 | 443.6 | 443.4 | 443.2 | 442.8 | 442.7 | 442.2 | 442.0 | 441.7 | 441.6 |
| 177.5° | 446.0 | 445.8 | 445.7 | 445.7 | 445.6 | 445.6 | 445.6 | 445.5 | 445.5 | 445.5 | 445.3 |
| 180° | 446.5 | 446.5 | 446.5 | 446.5 | 446.5 | 446.5 | 446.5 | 446.5 | 446.5 | 446.5 | 446.5 |



TEST NUMBER: P1444744
 CATALOG NUMBER: EHBR1-30-UNV-TA-L935-UPL40

CANDELA DISTRIBUTION (continued):

| | 137.5° | 140° | 142.5° | 145° | 147.5° | 150° | 152.5° | 155° | 157.5° | 160° | 162.5° |
|--------|---------|---------|---------|---------|---------|---------|---------|---------|---------|---------|---------|
| 0° | 23817.7 | 23817.7 | 23817.7 | 23817.7 | 23817.7 | 23817.7 | 23817.7 | 23817.7 | 23817.7 | 23817.7 | 23817.7 |
| 2.5° | 23732.1 | 23731.9 | 23729.6 | 23730.7 | 23731.1 | 23732.8 | 23734.9 | 23736.9 | 23737.4 | 23739.0 | 23739.4 |
| 5° | 23909.8 | 23851.0 | 23807.6 | 23759.9 | 23724.0 | 23691.6 | 23670.1 | 23653.0 | 23646.4 | 23648.0 | 23652.0 |
| 7.5° | 24391.4 | 24270.2 | 24170.2 | 24056.5 | 23961.7 | 23861.3 | 23778.1 | 23699.0 | 23641.3 | 23598.4 | 23574.3 |
| 10° | 24919.9 | 24772.2 | 24631.0 | 24466.5 | 24310.5 | 24143.9 | 23993.0 | 23841.1 | 23714.5 | 23604.4 | 23523.7 |
| 12.5° | 25154.4 | 25050.0 | 24927.9 | 24772.7 | 24605.7 | 24413.5 | 24219.5 | 24011.4 | 23817.9 | 23638.2 | 23493.4 |
| 15° | 24906.1 | 24906.3 | 24861.8 | 24787.3 | 24671.3 | 24517.7 | 24332.8 | 24115.9 | 23887.6 | 23654.6 | 23441.8 |
| 17.5° | 24117.9 | 24266.6 | 24349.3 | 24401.6 | 24385.5 | 24329.0 | 24211.3 | 24044.7 | 23831.9 | 23583.8 | 23324.1 |
| 20° | 22764.2 | 23115.0 | 23365.1 | 23589.9 | 23716.0 | 23799.7 | 23791.4 | 23723.6 | 23572.1 | 23361.1 | 23090.6 |
| 22.5° | 20868.0 | 21456.7 | 21921.3 | 22354.5 | 22658.3 | 22905.5 | 23023.0 | 23072.9 | 23004.2 | 22857.3 | 22603.3 |
| 25° | 18564.8 | 19365.3 | 20048.5 | 20711.4 | 21208.7 | 21636.2 | 21893.0 | 22074.0 | 22088.4 | 22011.6 | 21785.0 |
| 27.5° | 16005.5 | 16950.4 | 17815.1 | 18696.2 | 19395.6 | 20010.0 | 20413.2 | 20708.3 | 20802.0 | 20789.6 | 20583.9 |
| 30° | 13449.6 | 14441.5 | 15394.6 | 16422.0 | 17287.5 | 18072.5 | 18605.0 | 19004.1 | 19157.9 | 19187.3 | 18989.4 |
| 32.5° | 11035.6 | 12013.9 | 12964.3 | 14038.5 | 14990.9 | 15890.5 | 16519.7 | 16993.8 | 17172.6 | 17214.6 | 16997.6 |
| 35° | 8845.0 | 9747.5 | 10650.6 | 11691.7 | 12638.6 | 13570.2 | 14233.2 | 14729.5 | 14896.5 | 14924.6 | 14673.4 |
| 37.5° | 6945.2 | 7714.1 | 8501.2 | 9435.2 | 10304.8 | 11179.8 | 11809.6 | 12276.0 | 12397.7 | 12390.2 | 12105.7 |
| 40° | 5345.6 | 5943.4 | 6575.8 | 7344.8 | 8067.7 | 8807.3 | 9339.3 | 9724.8 | 9788.7 | 9741.4 | 9442.7 |
| 42.5° | 4019.6 | 4451.3 | 4909.9 | 5483.8 | 6020.3 | 6573.8 | 6960.8 | 7247.1 | 7256.2 | 7181.3 | 6913.1 |
| 45° | 2994.6 | 3415.9 | 3608.1 | 3955.1 | 4300.6 | 4668.8 | 4905.1 | 5081.9 | 5054.5 | 4988.6 | 4784.9 |
| 47.5° | 2282.9 | 2444.7 | 2616.5 | 2831.6 | 3032.9 | 3450.6 | 3419.7 | 3703.6 | 3499.1 | 3638.5 | 3331.6 |
| 50° | 1812.8 | 1903.3 | 1995.8 | 2110.0 | 2215.2 | 2324.4 | 2392.6 | 2443.6 | 2436.9 | 2415.0 | 2356.2 |
| 52.5° | 1542.3 | 1570.2 | 1615.8 | 1680.8 | 1739.5 | 1798.5 | 1837.4 | 1868.9 | 1869.6 | 1860.8 | 1831.0 |
| 55° | 1289.0 | 1324.5 | 1357.2 | 1399.7 | 1472.0 | 1483.1 | 1538.9 | 1527.5 | 1532.0 | 1516.5 | 1532.3 |
| 57.5° | 1136.5 | 1157.1 | 1175.6 | 1200.9 | 1221.7 | 1246.1 | 1260.5 | 1274.4 | 1273.0 | 1270.0 | 1254.9 |
| 60° | 1028.4 | 1039.8 | 1050.1 | 1064.8 | 1076.3 | 1090.0 | 1096.7 | 1103.7 | 1101.5 | 1096.3 | 1082.8 |
| 62.5° | 945.1 | 952.3 | 958.1 | 967.6 | 974.6 | 983.2 | 986.6 | 989.6 | 986.6 | 981.7 | 969.9 |
| 65° | 862.9 | 867.5 | 871.3 | 878.4 | 883.3 | 890.6 | 893.5 | 896.4 | 893.6 | 889.8 | 880.8 |
| 67.5° | 788.8 | 789.2 | 788.9 | 791.8 | 793.3 | 797.8 | 799.0 | 801.1 | 797.8 | 794.6 | 787.0 |
| 70° | 732.6 | 731.4 | 730.0 | 731.1 | 731.4 | 733.5 | 733.9 | 733.5 | 729.8 | 724.1 | 715.7 |
| 72.5° | 688.6 | 688.0 | 686.9 | 687.9 | 687.9 | 689.8 | 689.3 | 688.3 | 683.6 | 678.1 | 669.8 |
| 75° | 632.1 | 631.7 | 629.5 | 629.6 | 627.9 | 628.4 | 626.2 | 624.9 | 619.7 | 615.0 | 607.7 |
| 77.5° | 566.0 | 564.9 | 561.8 | 560.7 | 557.3 | 555.9 | 551.6 | 549.5 | 544.2 | 540.4 | 534.1 |
| 80° | 492.2 | 491.0 | 487.1 | 484.9 | 479.5 | 476.2 | 469.8 | 466.2 | 460.1 | 456.5 | 450.4 |
| 82.5° | 406.9 | 407.3 | 403.3 | 400.6 | 393.0 | 387.2 | 378.7 | 374.1 | 367.4 | 363.9 | 357.5 |
| 85° | 289.4 | 285.2 | 287.4 | 287.2 | 282.5 | 277.4 | 270.5 | 265.7 | 260.0 | 256.7 | 252.2 |
| 87.5° | 158.7 | 159.7 | 158.5 | 157.5 | 154.2 | 151.6 | 146.3 | 143.5 | 139.3 | 137.2 | 133.9 |
| 90° | 101.8 | 98.5 | 91.4 | 88.2 | 81.1 | 76.5 | 68.9 | 64.9 | 57.6 | 55.7 | 51.5 |
| 92.5° | 103.2 | 97.4 | 91.7 | 85.6 | 80.0 | 74.1 | 68.2 | 62.4 | 56.6 | 54.4 | 52.7 |
| 95° | 130.3 | 121.9 | 113.5 | 105.0 | 96.5 | 88.0 | 79.7 | 71.1 | 62.7 | 61.0 | 59.3 |
| 97.5° | 146.9 | 136.9 | 127.0 | 117.1 | 107.0 | 97.1 | 87.2 | 77.2 | 67.2 | 66.2 | 65.1 |
| 100° | 261.3 | 238.3 | 215.3 | 192.3 | 169.4 | 146.4 | 123.5 | 100.5 | 77.6 | 76.3 | 75.0 |
| 102.5° | 598.3 | 542.5 | 486.9 | 431.2 | 375.6 | 319.8 | 264.2 | 208.4 | 152.7 | 144.7 | 136.7 |
| 105° | 1064.6 | 980.2 | 896.1 | 811.7 | 727.4 | 643.0 | 558.8 | 474.4 | 390.1 | 363.1 | 336.0 |
| 107.5° | 1400.6 | 1321.3 | 1242.1 | 1162.9 | 1083.6 | 1004.5 | 925.0 | 845.7 | 766.4 | 718.7 | 671.0 |
| 110° | 1552.7 | 1489.8 | 1427.0 | 1364.0 | 1301.2 | 1238.2 | 1175.2 | 1112.3 | 1049.3 | 1008.2 | 967.2 |



TEST NUMBER: P1444744
 CATALOG NUMBER: EHBR1-30-UNV-TA-L935-UPL40

CANDELA DISTRIBUTION (continued):

| | 137.5° | 140° | 142.5° | 145° | 147.5° | 150° | 152.5° | 155° | 157.5° | 160° | 162.5° |
|--------|--------|--------|--------|--------|--------|--------|--------|--------|--------|--------|--------|
| 112.5° | 1534.0 | 1487.7 | 1441.8 | 1395.6 | 1349.4 | 1303.2 | 1257.1 | 1210.8 | 1164.5 | 1139.6 | 1114.6 |
| 115° | 1386.0 | 1358.0 | 1330.3 | 1302.5 | 1274.6 | 1246.7 | 1218.9 | 1190.8 | 1162.9 | 1149.8 | 1136.5 |
| 117.5° | 1210.0 | 1195.7 | 1181.6 | 1167.2 | 1152.9 | 1138.4 | 1124.2 | 1109.8 | 1095.4 | 1090.8 | 1086.1 |
| 120° | 1030.9 | 1026.4 | 1021.9 | 1017.4 | 1013.0 | 1008.5 | 1003.9 | 999.4 | 994.8 | 995.2 | 995.7 |
| 122.5° | 881.2 | 882.7 | 884.3 | 885.6 | 887.2 | 888.5 | 890.0 | 891.2 | 892.6 | 896.0 | 899.4 |
| 125° | 775.5 | 779.4 | 783.3 | 787.2 | 791.0 | 794.9 | 798.8 | 802.6 | 806.5 | 809.8 | 813.3 |
| 127.5° | 699.2 | 703.5 | 708.0 | 712.4 | 716.8 | 721.1 | 725.5 | 729.7 | 734.1 | 737.1 | 740.3 |
| 130° | 645.7 | 649.3 | 653.3 | 656.9 | 660.7 | 664.4 | 668.2 | 672.0 | 675.8 | 678.0 | 680.4 |
| 132.5° | 606.2 | 609.7 | 613.0 | 616.2 | 619.7 | 623.0 | 626.4 | 629.7 | 633.2 | 634.8 | 636.5 |
| 135° | 580.4 | 582.8 | 585.2 | 587.6 | 590.3 | 592.6 | 595.2 | 597.6 | 600.3 | 601.3 | 602.4 |
| 137.5° | 556.8 | 558.8 | 560.8 | 562.8 | 564.9 | 566.9 | 569.0 | 571.1 | 573.3 | 573.6 | 574.2 |
| 140° | 536.0 | 538.2 | 540.3 | 542.4 | 544.7 | 546.8 | 549.1 | 551.4 | 553.9 | 554.1 | 554.7 |
| 142.5° | 520.2 | 521.8 | 523.5 | 525.1 | 526.8 | 528.4 | 530.3 | 532.2 | 534.1 | 534.5 | 534.9 |
| 145° | 503.2 | 505.1 | 507.2 | 509.2 | 511.1 | 513.3 | 515.6 | 517.8 | 520.1 | 520.2 | 520.5 |
| 147.5° | 491.0 | 492.7 | 494.5 | 496.1 | 498.0 | 499.7 | 501.8 | 503.8 | 505.9 | 506.0 | 506.2 |
| 150° | 477.3 | 479.1 | 480.9 | 482.7 | 484.8 | 486.9 | 489.0 | 491.1 | 493.6 | 494.0 | 494.5 |
| 152.5° | 465.0 | 467.0 | 469.1 | 471.3 | 473.5 | 475.7 | 478.1 | 480.4 | 482.9 | 483.3 | 483.8 |
| 155° | 454.6 | 456.5 | 458.7 | 460.9 | 463.1 | 465.2 | 467.6 | 469.8 | 472.2 | 472.9 | 473.5 |
| 157.5° | 448.0 | 449.7 | 451.6 | 453.6 | 455.5 | 457.5 | 459.6 | 461.6 | 463.8 | 464.3 | 464.9 |
| 160° | 443.4 | 445.0 | 446.7 | 448.5 | 450.2 | 451.9 | 453.7 | 455.5 | 457.3 | 457.9 | 458.4 |
| 162.5° | 439.3 | 441.0 | 442.7 | 444.2 | 446.1 | 447.8 | 449.6 | 451.4 | 453.2 | 453.6 | 454.1 |
| 165° | 437.0 | 438.2 | 439.5 | 440.6 | 441.9 | 443.0 | 444.5 | 445.6 | 447.1 | 447.5 | 448.3 |
| 167.5° | 439.0 | 439.8 | 440.7 | 441.7 | 442.8 | 443.7 | 444.8 | 445.7 | 446.8 | 447.3 | 447.9 |
| 170° | 438.6 | 439.4 | 440.2 | 441.1 | 442.1 | 443.0 | 443.9 | 444.7 | 445.8 | 446.3 | 446.9 |
| 172.5° | 439.6 | 440.0 | 440.7 | 441.2 | 441.8 | 442.4 | 443.0 | 443.6 | 444.3 | 445.0 | 445.6 |
| 175° | 441.9 | 442.2 | 442.5 | 442.7 | 443.0 | 443.4 | 443.7 | 444.1 | 444.4 | 444.9 | 445.5 |
| 177.5° | 445.5 | 445.7 | 445.9 | 446.1 | 446.5 | 446.7 | 447.0 | 447.3 | 447.5 | 448.2 | 448.9 |
| 180° | 446.5 | 446.5 | 446.5 | 446.5 | 446.5 | 446.5 | 446.5 | 446.5 | 446.5 | 446.5 | 446.5 |



TEST NUMBER: P1444744
 CATALOG NUMBER: EHBR1-30-UNV-TA-L935-UPL40

CANDELA DISTRIBUTION (continued):

| | 165° | 167.5° | 170° | 172.5° | 175° | 177.5° | 180° | 182.5° | 185° | 187.5° | 190° |
|--------|---------|---------|---------|---------|---------|---------|---------|---------|---------|---------|---------|
| 0° | 23817.7 | 23817.7 | 23817.7 | 23817.7 | 23817.7 | 23817.7 | 23817.7 | 23817.7 | 23817.7 | 23817.7 | 23817.7 |
| 2.5° | 23738.6 | 23738.4 | 23737.6 | 23736.5 | 23735.4 | 23736.0 | 23737.1 | 23739.8 | 23744.6 | 23751.5 | 23760.5 |
| 5° | 23655.3 | 23660.2 | 23662.9 | 23663.3 | 23660.7 | 23659.3 | 23661.5 | 23668.1 | 23681.2 | 23703.3 | 23733.1 |
| 7.5° | 23567.9 | 23573.9 | 23583.0 | 23589.9 | 23591.3 | 23589.6 | 23589.9 | 23600.2 | 23624.5 | 23667.4 | 23727.8 |
| 10° | 23474.6 | 23456.9 | 23466.2 | 23483.3 | 23496.9 | 23499.4 | 23501.1 | 23513.2 | 23548.7 | 23613.6 | 23710.5 |
| 12.5° | 23388.5 | 23332.3 | 23321.5 | 23336.9 | 23357.6 | 23364.2 | 23362.4 | 23367.5 | 23409.1 | 23495.0 | 23630.1 |
| 15° | 23275.1 | 23169.4 | 23133.3 | 23137.3 | 23162.8 | 23172.0 | 23165.3 | 23155.1 | 23195.6 | 23300.5 | 23475.2 |
| 17.5° | 23091.6 | 22921.3 | 22854.9 | 22852.0 | 22881.8 | 22889.8 | 22873.4 | 22841.6 | 22881.5 | 23012.5 | 23229.4 |
| 20° | 22812.8 | 22561.3 | 22436.4 | 22416.5 | 22448.9 | 22439.4 | 22406.7 | 22358.7 | 22411.1 | 22570.3 | 22828.3 |
| 22.5° | 22311.6 | 21992.9 | 21779.4 | 21710.5 | 21749.3 | 21723.3 | 21675.6 | 21614.3 | 21683.9 | 21864.9 | 22152.1 |
| 25° | 21492.4 | 21124.2 | 20831.9 | 20667.8 | 20698.7 | 20652.4 | 20600.4 | 20526.1 | 20609.1 | 20816.8 | 21133.1 |
| 27.5° | 20288.4 | 19863.1 | 19500.8 | 19229.3 | 19239.3 | 19178.6 | 19118.7 | 19022.5 | 19126.2 | 19372.0 | 19728.6 |
| 30° | 18687.3 | 18195.2 | 17754.0 | 17385.0 | 17352.0 | 17293.1 | 17231.8 | 17105.6 | 17235.3 | 17529.6 | 17946.3 |
| 32.5° | 16676.6 | 16130.2 | 15620.5 | 15154.0 | 15066.0 | 15008.5 | 14953.9 | 14808.6 | 14978.4 | 15321.6 | 15800.4 |
| 35° | 14325.3 | 13743.2 | 13190.5 | 12657.7 | 12512.0 | 12454.5 | 12406.7 | 12267.5 | 12479.5 | 12852.9 | 13370.0 |
| 37.5° | 11744.3 | 11149.8 | 10601.1 | 10054.6 | 9848.6 | 9770.7 | 9736.0 | 9644.8 | 9889.4 | 10258.7 | 10777.9 |
| 40° | 9094.7 | 8541.8 | 8049.9 | 7567.3 | 7332.5 | 7213.2 | 7195.0 | 7178.4 | 7414.9 | 7735.3 | 8206.5 |
| 42.5° | 6616.0 | 6170.0 | 5790.7 | 5421.8 | 5208.9 | 5046.1 | 5046.0 | 5095.5 | 5308.4 | 5548.4 | 5911.8 |
| 45° | 4576.5 | 4277.1 | 4035.5 | 3789.0 | 3854.9 | 3530.2 | 3721.0 | 3623.1 | 3728.3 | 3883.1 | 4119.4 |
| 47.5° | 3145.9 | 2982.5 | 2849.8 | 2712.0 | 2611.7 | 2515.8 | 2524.2 | 2586.0 | 2685.1 | 2776.9 | 2899.9 |
| 50° | 2292.8 | 2209.6 | 2142.0 | 2070.5 | 2020.6 | 1978.2 | 1980.7 | 2007.4 | 2059.5 | 2107.9 | 2172.3 |
| 52.5° | 1796.6 | 1750.7 | 1714.0 | 1674.4 | 1648.2 | 1627.2 | 1628.3 | 1641.3 | 1669.5 | 1697.1 | 1734.0 |
| 55° | 1480.9 | 1475.3 | 1427.6 | 1392.0 | 1378.5 | 1364.4 | 1366.9 | 1372.1 | 1391.2 | 1407.4 | 1431.8 |
| 57.5° | 1240.9 | 1219.5 | 1205.1 | 1186.5 | 1177.9 | 1168.0 | 1170.3 | 1172.2 | 1184.9 | 1195.8 | 1213.4 |
| 60° | 1071.6 | 1056.3 | 1046.2 | 1033.5 | 1027.9 | 1021.5 | 1023.0 | 1024.2 | 1032.3 | 1039.4 | 1052.0 |
| 62.5° | 959.0 | 945.4 | 936.6 | 926.7 | 922.8 | 918.6 | 919.6 | 919.8 | 925.0 | 930.2 | 939.8 |
| 65° | 872.6 | 861.9 | 854.6 | 846.1 | 841.9 | 837.5 | 838.0 | 838.0 | 842.3 | 846.1 | 853.2 |
| 67.5° | 781.3 | 773.3 | 768.5 | 761.8 | 759.0 | 754.4 | 754.3 | 753.0 | 755.8 | 757.2 | 762.1 |
| 70° | 708.1 | 699.9 | 693.8 | 687.4 | 683.8 | 679.8 | 679.9 | 680.0 | 683.3 | 686.7 | 693.0 |
| 72.5° | 662.8 | 655.0 | 649.6 | 643.9 | 640.6 | 637.2 | 636.6 | 636.2 | 638.6 | 640.5 | 644.7 |
| 75° | 602.9 | 596.6 | 593.5 | 588.1 | 585.5 | 581.7 | 581.0 | 579.3 | 580.5 | 580.9 | 583.9 |
| 77.5° | 530.2 | 524.2 | 521.7 | 516.3 | 514.1 | 509.8 | 509.4 | 507.5 | 508.4 | 507.7 | 510.1 |
| 80° | 447.3 | 441.9 | 440.5 | 436.0 | 435.0 | 431.1 | 430.4 | 428.1 | 428.7 | 426.9 | 427.8 |
| 82.5° | 354.7 | 349.8 | 348.8 | 344.7 | 344.7 | 341.1 | 340.9 | 337.2 | 337.2 | 334.2 | 329.3 |
| 85° | 249.9 | 246.2 | 244.8 | 241.4 | 240.4 | 237.5 | 236.0 | 232.6 | 231.4 | 229.1 | 228.5 |
| 87.5° | 131.9 | 129.6 | 127.5 | 126.0 | 123.1 | 117.8 | 117.4 | 113.7 | 114.0 | 111.5 | 111.7 |
| 90° | 50.0 | 46.1 | 44.7 | 41.1 | 39.5 | 36.6 | 35.2 | 36.1 | 37.4 | 38.3 | 39.9 |
| 92.5° | 50.7 | 48.8 | 46.8 | 44.9 | 42.9 | 41.0 | 39.0 | 41.0 | 42.9 | 44.9 | 46.8 |
| 95° | 57.6 | 55.8 | 54.0 | 52.3 | 50.6 | 48.9 | 47.1 | 48.9 | 50.6 | 52.4 | 54.1 |
| 97.5° | 64.0 | 62.9 | 61.8 | 60.7 | 59.6 | 58.5 | 57.5 | 58.6 | 59.7 | 60.8 | 61.9 |
| 100° | 73.7 | 72.4 | 71.1 | 69.8 | 68.5 | 67.2 | 65.9 | 67.3 | 68.7 | 70.0 | 71.2 |
| 102.5° | 128.7 | 120.7 | 112.7 | 104.7 | 96.6 | 88.6 | 80.6 | 88.6 | 96.6 | 104.8 | 112.7 |
| 105° | 308.8 | 281.8 | 254.7 | 227.6 | 200.4 | 173.3 | 146.2 | 173.4 | 200.5 | 227.7 | 254.9 |
| 107.5° | 623.4 | 575.8 | 528.0 | 480.4 | 432.6 | 384.9 | 337.2 | 385.0 | 432.8 | 480.4 | 528.2 |
| 110° | 926.0 | 884.8 | 843.8 | 802.6 | 761.4 | 720.3 | 679.0 | 720.4 | 761.6 | 802.8 | 844.1 |



TEST NUMBER: P1444744
 CATALOG NUMBER: EHBR1-30-UNV-TA-L935-UPL40

CANDELA DISTRIBUTION (continued):

| | 165° | 167.5° | 170° | 172.5° | 175° | 177.5° | 180° | 182.5° | 185° | 187.5° | 190° |
|--------|--------|--------|--------|--------|--------|--------|--------|--------|--------|--------|--------|
| 112.5° | 1089.6 | 1064.6 | 1039.5 | 1014.5 | 989.3 | 964.3 | 939.1 | 964.5 | 989.7 | 1014.9 | 1040.0 |
| 115° | 1123.3 | 1110.0 | 1096.8 | 1083.5 | 1070.2 | 1056.9 | 1043.5 | 1057.1 | 1070.6 | 1084.1 | 1097.6 |
| 117.5° | 1081.3 | 1076.7 | 1071.8 | 1067.1 | 1062.3 | 1057.6 | 1052.7 | 1057.8 | 1062.8 | 1067.9 | 1072.7 |
| 120° | 996.0 | 996.5 | 996.8 | 997.1 | 997.4 | 997.7 | 997.9 | 998.0 | 998.0 | 998.0 | 998.0 |
| 122.5° | 902.6 | 905.9 | 909.1 | 912.4 | 915.6 | 918.7 | 921.7 | 919.1 | 916.3 | 913.6 | 910.6 |
| 125° | 816.5 | 820.0 | 823.4 | 826.8 | 829.9 | 833.3 | 836.2 | 833.7 | 830.9 | 828.1 | 825.1 |
| 127.5° | 743.3 | 746.3 | 749.3 | 752.3 | 755.1 | 757.9 | 760.5 | 758.4 | 756.0 | 753.6 | 751.1 |
| 130° | 682.5 | 684.9 | 687.0 | 689.2 | 691.1 | 693.1 | 694.9 | 693.6 | 692.1 | 690.8 | 689.0 |
| 132.5° | 638.1 | 639.8 | 641.4 | 642.9 | 644.3 | 645.8 | 646.8 | 646.3 | 645.5 | 644.7 | 643.6 |
| 135° | 603.4 | 604.5 | 605.4 | 606.6 | 607.2 | 608.1 | 608.5 | 608.7 | 608.4 | 608.2 | 607.7 |
| 137.5° | 574.5 | 575.1 | 575.4 | 575.6 | 575.8 | 575.9 | 575.8 | 576.5 | 577.0 | 577.6 | 577.8 |
| 140° | 555.1 | 555.7 | 555.9 | 556.2 | 556.6 | 556.8 | 556.6 | 557.4 | 557.8 | 558.2 | 558.4 |
| 142.5° | 535.5 | 535.9 | 536.2 | 536.5 | 536.7 | 536.9 | 536.8 | 537.5 | 538.0 | 538.4 | 538.6 |
| 145° | 520.8 | 521.0 | 521.0 | 521.1 | 521.0 | 521.0 | 520.6 | 521.6 | 522.2 | 522.9 | 523.4 |
| 147.5° | 506.4 | 506.6 | 506.5 | 506.5 | 506.5 | 506.4 | 506.1 | 506.9 | 507.6 | 508.3 | 508.8 |
| 150° | 495.1 | 495.7 | 496.0 | 496.4 | 496.8 | 496.9 | 496.9 | 497.5 | 497.8 | 498.1 | 498.2 |
| 152.5° | 484.3 | 484.7 | 485.1 | 485.4 | 485.7 | 485.8 | 485.9 | 486.3 | 486.9 | 487.2 | 487.4 |
| 155° | 474.0 | 474.6 | 475.2 | 475.7 | 476.1 | 476.5 | 476.8 | 477.2 | 477.5 | 477.6 | 477.8 |
| 157.5° | 465.3 | 465.9 | 466.4 | 466.9 | 467.3 | 467.8 | 468.2 | 468.6 | 468.8 | 469.2 | 469.4 |
| 160° | 458.8 | 459.4 | 459.8 | 460.3 | 460.8 | 461.2 | 461.6 | 462.0 | 462.3 | 462.6 | 463.0 |
| 162.5° | 454.5 | 455.1 | 455.3 | 455.9 | 456.3 | 456.8 | 457.2 | 457.5 | 457.9 | 458.2 | 458.5 |
| 165° | 448.9 | 449.6 | 450.2 | 450.9 | 451.5 | 452.3 | 452.7 | 452.9 | 452.9 | 453.1 | 453.1 |
| 167.5° | 448.5 | 449.2 | 449.6 | 450.4 | 450.8 | 451.5 | 452.1 | 452.3 | 452.2 | 452.3 | 452.3 |
| 170° | 447.3 | 447.9 | 448.5 | 449.0 | 449.5 | 450.2 | 450.5 | 450.6 | 450.6 | 450.7 | 450.7 |
| 172.5° | 446.2 | 447.0 | 447.6 | 448.5 | 449.0 | 449.6 | 450.3 | 450.2 | 449.9 | 449.7 | 449.4 |
| 175° | 445.9 | 446.6 | 447.2 | 447.8 | 448.3 | 448.9 | 449.5 | 449.2 | 449.0 | 448.7 | 448.5 |
| 177.5° | 449.7 | 450.5 | 451.3 | 451.9 | 452.7 | 453.3 | 454.1 | 453.4 | 452.9 | 452.3 | 451.6 |
| 180° | 446.5 | 446.5 | 446.5 | 446.5 | 446.5 | 446.5 | 446.5 | 446.5 | 446.5 | 446.5 | 446.5 |



TEST NUMBER: P1444744
 CATALOG NUMBER: EHBR1-30-UNV-TA-L935-UPL40

CANDELA DISTRIBUTION (continued):

| | 192.5° | 195° | 197.5° | 200° | 202.5° | 205° | 207.5° | 210° | 212.5° | 215° | 217.5° |
|--------|---------|---------|---------|---------|---------|---------|---------|---------|---------|---------|---------|
| 0° | 23817.7 | 23817.7 | 23817.7 | 23817.7 | 23817.7 | 23817.7 | 23817.7 | 23817.7 | 23817.7 | 23817.7 | 23817.7 |
| 2.5° | 23773.2 | 23785.2 | 23803.3 | 23819.8 | 23844.6 | 23864.2 | 23893.6 | 23915.9 | 23949.1 | 23970.7 | 24006.8 |
| 5° | 23775.4 | 23821.9 | 23883.0 | 23942.7 | 24014.5 | 24079.6 | 24160.6 | 24229.5 | 24310.9 | 24377.3 | 24460.5 |
| 7.5° | 23809.0 | 23898.6 | 24006.1 | 24114.5 | 24237.0 | 24351.6 | 24480.7 | 24597.6 | 24725.3 | 24833.4 | 24951.5 |
| 10° | 23833.7 | 23972.1 | 24130.6 | 24290.0 | 24457.7 | 24613.6 | 24771.1 | 24907.1 | 25034.2 | 25138.8 | 25231.2 |
| 12.5° | 23800.1 | 23990.7 | 24194.0 | 24390.3 | 24576.9 | 24738.3 | 24873.7 | 24978.3 | 25050.5 | 25099.5 | 25110.9 |
| 15° | 23685.8 | 23915.1 | 24136.2 | 24331.7 | 24486.6 | 24605.9 | 24667.7 | 24696.7 | 24665.7 | 24614.1 | 24500.7 |
| 17.5° | 23472.3 | 23714.2 | 23911.8 | 24066.0 | 24147.9 | 24180.2 | 24129.0 | 24040.0 | 23865.9 | 23672.7 | 23393.6 |
| 20° | 23080.8 | 23306.2 | 23449.5 | 23533.7 | 23511.7 | 23430.8 | 23237.5 | 23002.5 | 22655.0 | 22284.6 | 21795.9 |
| 22.5° | 22394.1 | 22591.2 | 22667.6 | 22673.8 | 22540.2 | 22337.6 | 21988.9 | 21585.9 | 21037.6 | 20467.6 | 19766.7 |
| 25° | 21363.4 | 21536.0 | 21548.1 | 21480.3 | 21235.8 | 20907.4 | 20395.4 | 19825.3 | 19080.3 | 18320.8 | 17442.4 |
| 27.5° | 19965.5 | 20131.0 | 20090.5 | 19964.1 | 19624.7 | 19185.3 | 18529.7 | 17793.2 | 16874.8 | 15977.7 | 15006.0 |
| 30° | 18208.3 | 18385.3 | 18337.8 | 18175.5 | 17771.9 | 17252.4 | 16481.1 | 15625.4 | 14605.7 | 13647.6 | 12663.0 |
| 32.5° | 16105.5 | 16329.2 | 16296.3 | 16142.2 | 15721.0 | 15165.1 | 14328.2 | 13420.6 | 12377.3 | 11433.2 | 10475.4 |
| 35° | 13715.2 | 13986.9 | 14001.0 | 13900.2 | 13509.2 | 12959.7 | 12133.3 | 11254.9 | 10255.6 | 9364.7 | 8479.9 |
| 37.5° | 11140.1 | 11455.1 | 11519.7 | 11492.5 | 11168.5 | 10683.4 | 9930.6 | 9142.4 | 8257.2 | 7476.4 | 6719.6 |
| 40° | 8550.7 | 8869.5 | 8980.1 | 9012.9 | 8773.8 | 8398.1 | 7780.1 | 7144.0 | 6422.3 | 5789.7 | 5188.8 |
| 42.5° | 6189.2 | 6471.9 | 6578.8 | 6646.0 | 6496.7 | 6246.2 | 5795.4 | 5333.6 | 4804.8 | 4348.5 | 3911.0 |
| 45° | 4298.5 | 4498.5 | 4579.8 | 4647.5 | 4566.2 | 4424.9 | 4140.2 | 3851.3 | 3502.2 | 3204.1 | 2921.8 |
| 47.5° | 3005.4 | 3115.6 | 3169.3 | 3202.2 | 3170.6 | 3096.9 | 2942.0 | 2774.6 | 2577.6 | 2403.4 | 2235.8 |
| 50° | 2227.6 | 2286.3 | 2314.4 | 2333.3 | 2310.4 | 2269.4 | 2185.6 | 2094.5 | 1986.3 | 1887.6 | 1791.1 |
| 52.5° | 1765.3 | 1799.0 | 1815.6 | 1825.9 | 1812.7 | 1787.6 | 1738.9 | 1684.9 | 1620.0 | 1559.0 | 1526.9 |
| 55° | 1487.2 | 1485.5 | 1524.0 | 1505.4 | 1524.0 | 1482.4 | 1473.7 | 1414.3 | 1360.4 | 1322.5 | 1281.5 |
| 57.5° | 1226.4 | 1243.9 | 1251.4 | 1259.6 | 1254.3 | 1246.7 | 1225.9 | 1204.6 | 1176.2 | 1152.5 | 1127.1 |
| 60° | 1061.7 | 1076.0 | 1084.2 | 1092.4 | 1091.9 | 1089.0 | 1077.0 | 1064.3 | 1046.5 | 1032.3 | 1017.0 |
| 62.5° | 948.1 | 960.5 | 968.6 | 976.5 | 977.2 | 976.0 | 967.0 | 958.1 | 946.0 | 937.1 | 926.5 |
| 65° | 858.7 | 867.5 | 873.0 | 879.2 | 879.0 | 877.2 | 869.0 | 861.7 | 851.8 | 845.5 | 837.8 |
| 67.5° | 765.3 | 771.9 | 776.2 | 782.1 | 783.2 | 783.6 | 779.1 | 775.6 | 770.7 | 769.0 | 766.4 |
| 70° | 698.9 | 706.8 | 713.6 | 721.2 | 725.2 | 727.1 | 725.2 | 723.4 | 720.6 | 719.4 | 717.4 |
| 72.5° | 648.6 | 655.4 | 660.6 | 667.4 | 671.2 | 673.9 | 672.4 | 671.5 | 669.1 | 668.7 | 667.2 |
| 75° | 586.0 | 590.7 | 593.7 | 598.8 | 600.9 | 603.4 | 602.3 | 602.9 | 602.1 | 604.1 | 604.0 |
| 77.5° | 510.9 | 514.3 | 515.8 | 519.5 | 519.9 | 523.0 | 523.6 | 527.2 | 529.8 | 535.5 | 538.5 |
| 80° | 426.3 | 428.5 | 428.5 | 432.3 | 434.0 | 439.2 | 441.7 | 447.6 | 450.4 | 455.4 | 455.8 |
| 82.5° | 331.2 | 328.6 | 331.2 | 329.6 | 334.4 | 340.3 | 341.1 | 346.1 | 347.2 | 350.5 | 347.9 |
| 85° | 226.4 | 226.2 | 224.2 | 224.6 | 223.0 | 223.8 | 222.9 | 223.9 | 223.0 | 223.0 | 220.8 |
| 87.5° | 108.5 | 109.5 | 107.0 | 107.9 | 105.6 | 106.7 | 104.6 | 106.2 | 103.8 | 104.1 | 100.6 |
| 90° | 41.1 | 42.4 | 43.5 | 45.0 | 46.7 | 50.3 | 54.1 | 57.8 | 61.9 | 65.6 | 69.5 |
| 92.5° | 48.8 | 50.8 | 52.7 | 54.7 | 56.6 | 62.5 | 68.3 | 74.2 | 80.2 | 85.9 | 91.8 |
| 95° | 55.9 | 57.6 | 59.4 | 61.3 | 63.0 | 71.4 | 79.9 | 88.4 | 96.9 | 105.3 | 113.8 |
| 97.5° | 63.2 | 64.3 | 65.3 | 66.4 | 67.6 | 77.6 | 87.6 | 97.5 | 107.5 | 117.6 | 127.4 |
| 100° | 72.7 | 74.0 | 75.2 | 76.7 | 77.9 | 101.0 | 124.0 | 146.9 | 169.9 | 192.9 | 215.9 |
| 102.5° | 120.9 | 128.9 | 136.9 | 145.1 | 153.2 | 208.9 | 264.7 | 320.5 | 376.0 | 431.9 | 487.5 |
| 105° | 282.0 | 309.1 | 336.4 | 363.5 | 390.6 | 475.0 | 559.5 | 643.9 | 728.1 | 812.4 | 896.9 |
| 107.5° | 576.1 | 623.8 | 671.6 | 719.4 | 767.1 | 846.5 | 925.8 | 1005.2 | 1084.6 | 1163.9 | 1243.0 |
| 110° | 885.4 | 926.4 | 967.9 | 1009.1 | 1050.3 | 1113.3 | 1176.4 | 1239.4 | 1302.5 | 1365.4 | 1428.4 |



TEST NUMBER: P1444744
 CATALOG NUMBER: EHBR1-30-UNV-TA-L935-UPL40

CANDELA DISTRIBUTION (continued):

| | 192.5° | 195° | 197.5° | 200° | 202.5° | 205° | 207.5° | 210° | 212.5° | 215° | 217.5° |
|--------|--------|--------|--------|--------|--------|--------|--------|--------|--------|--------|--------|
| 112.5° | 1065.3 | 1090.4 | 1115.5 | 1140.5 | 1165.7 | 1211.9 | 1258.4 | 1304.7 | 1351.0 | 1397.1 | 1443.3 |
| 115° | 1111.0 | 1124.2 | 1137.6 | 1150.9 | 1164.4 | 1192.4 | 1220.4 | 1248.4 | 1276.4 | 1304.4 | 1332.4 |
| 117.5° | 1077.7 | 1082.6 | 1087.5 | 1092.1 | 1097.0 | 1111.5 | 1126.1 | 1140.5 | 1155.0 | 1169.5 | 1183.9 |
| 120° | 997.9 | 997.6 | 997.4 | 997.1 | 996.9 | 1001.5 | 1006.3 | 1010.8 | 1015.5 | 1020.1 | 1024.6 |
| 122.5° | 907.6 | 904.4 | 901.4 | 898.3 | 895.2 | 893.7 | 892.6 | 891.2 | 890.1 | 888.7 | 887.4 |
| 125° | 822.0 | 818.9 | 815.8 | 812.5 | 809.3 | 805.5 | 801.8 | 798.1 | 794.3 | 790.6 | 786.8 |
| 127.5° | 748.5 | 745.7 | 743.2 | 740.2 | 737.4 | 733.0 | 728.9 | 724.5 | 720.4 | 716.1 | 711.8 |
| 130° | 687.3 | 685.3 | 683.6 | 681.3 | 679.5 | 675.6 | 672.1 | 668.3 | 664.7 | 661.0 | 657.5 |
| 132.5° | 642.5 | 641.2 | 640.0 | 638.4 | 637.1 | 633.7 | 630.7 | 627.4 | 624.1 | 620.7 | 617.6 |
| 135° | 607.3 | 606.6 | 606.2 | 605.2 | 604.5 | 602.0 | 599.7 | 597.3 | 595.0 | 592.6 | 590.2 |
| 137.5° | 578.0 | 577.9 | 577.9 | 577.8 | 577.8 | 575.8 | 573.9 | 571.9 | 570.0 | 568.0 | 566.2 |
| 140° | 558.7 | 558.7 | 558.7 | 558.6 | 558.5 | 556.3 | 554.3 | 552.2 | 550.1 | 548.0 | 545.9 |
| 142.5° | 538.8 | 538.9 | 538.9 | 538.8 | 538.8 | 537.1 | 535.6 | 534.1 | 532.5 | 530.9 | 529.4 |
| 145° | 523.9 | 524.1 | 524.5 | 524.6 | 524.9 | 522.9 | 521.0 | 519.0 | 517.2 | 515.2 | 513.3 |
| 147.5° | 509.4 | 509.7 | 510.2 | 510.4 | 510.9 | 509.2 | 507.6 | 505.9 | 504.5 | 502.7 | 501.3 |
| 150° | 498.5 | 498.6 | 498.7 | 498.7 | 498.7 | 496.8 | 495.2 | 493.5 | 491.9 | 490.0 | 488.3 |
| 152.5° | 487.7 | 487.9 | 488.1 | 488.2 | 488.4 | 486.6 | 484.8 | 482.9 | 481.1 | 479.1 | 477.3 |
| 155° | 478.0 | 478.1 | 478.2 | 478.2 | 478.2 | 476.5 | 474.7 | 472.9 | 471.2 | 469.3 | 467.6 |
| 157.5° | 469.6 | 469.8 | 469.9 | 470.0 | 470.1 | 468.6 | 467.0 | 465.6 | 464.0 | 462.4 | 460.9 |
| 160° | 463.1 | 463.4 | 463.6 | 463.7 | 463.9 | 462.6 | 461.4 | 460.0 | 458.9 | 457.3 | 456.0 |
| 162.5° | 458.8 | 459.1 | 459.2 | 459.3 | 459.5 | 458.2 | 457.1 | 455.8 | 454.5 | 453.0 | 451.7 |
| 165° | 453.3 | 453.1 | 453.2 | 453.0 | 453.0 | 452.1 | 451.4 | 450.4 | 449.6 | 448.6 | 447.8 |
| 167.5° | 452.3 | 452.2 | 452.3 | 452.1 | 452.1 | 451.4 | 451.1 | 450.4 | 449.7 | 449.0 | 448.4 |
| 170° | 450.7 | 450.6 | 450.5 | 450.4 | 450.4 | 449.7 | 449.2 | 448.5 | 448.1 | 447.2 | 446.5 |
| 172.5° | 449.2 | 448.8 | 448.6 | 448.4 | 448.0 | 447.5 | 447.2 | 446.8 | 446.5 | 446.0 | 445.6 |
| 175° | 448.1 | 447.7 | 447.5 | 447.2 | 446.8 | 446.7 | 446.5 | 446.4 | 446.1 | 445.9 | 445.6 |
| 177.5° | 451.2 | 450.6 | 449.9 | 449.4 | 448.8 | 448.6 | 448.5 | 448.3 | 448.3 | 448.0 | 447.8 |
| 180° | 446.5 | 446.5 | 446.5 | 446.5 | 446.5 | 446.5 | 446.5 | 446.5 | 446.5 | 446.5 | 446.5 |



TEST NUMBER: P1444744
 CATALOG NUMBER: EHBR1-30-UNV-TA-L935-UPL40

CANDELA DISTRIBUTION (continued):

| | 220° | 222.5° | 225° | 227.5° | 230° | 232.5° | 235° | 237.5° | 240° | 242.5° | 245° |
|--------|---------|---------|---------|---------|---------|---------|---------|---------|---------|---------|---------|
| 0° | 23817.7 | 23817.7 | 23817.7 | 23817.7 | 23817.7 | 23817.7 | 23817.7 | 23817.7 | 23817.7 | 23817.7 | 23817.7 |
| 2.5° | 24029.1 | 23880.8 | 23861.1 | 23871.5 | 23896.4 | 23905.5 | 23932.3 | 23939.6 | 23966.5 | 23973.1 | 23999.1 |
| 5° | 24524.9 | 24328.8 | 24338.6 | 24385.7 | 24457.1 | 24499.7 | 24569.9 | 24606.6 | 24673.5 | 24704.0 | 24764.6 |
| 7.5° | 25047.8 | 24893.7 | 24941.7 | 25021.3 | 25118.9 | 25186.5 | 25270.8 | 25325.7 | 25398.4 | 25443.5 | 25501.7 |
| 10° | 25304.4 | 25262.3 | 25315.1 | 25377.8 | 25433.4 | 25477.0 | 25512.8 | 25541.4 | 25560.1 | 25577.7 | 25585.3 |
| 12.5° | 25109.1 | 25174.5 | 25183.4 | 25177.4 | 25140.5 | 25112.3 | 25049.0 | 25006.0 | 24929.7 | 24883.2 | 24792.3 |
| 15° | 24385.0 | 24528.5 | 24449.0 | 24328.6 | 24152.4 | 24005.6 | 23798.1 | 23643.7 | 23427.6 | 23281.1 | 23064.4 |
| 17.5° | 23114.0 | 23295.3 | 23088.1 | 22809.5 | 22455.0 | 22151.9 | 21774.3 | 21474.7 | 21099.3 | 20826.2 | 20475.9 |
| 20° | 21324.8 | 21494.2 | 21124.6 | 20662.8 | 20114.5 | 19653.1 | 19109.0 | 18674.9 | 18169.4 | 17793.2 | 17339.3 |
| 22.5° | 19097.2 | 19217.8 | 18697.1 | 18074.5 | 17376.1 | 16799.6 | 16149.1 | 15628.6 | 15051.6 | 14621.6 | 14137.6 |
| 25° | 16632.6 | 16665.2 | 16040.6 | 15323.3 | 14544.8 | 13897.0 | 13202.5 | 12655.3 | 12066.8 | 11631.0 | 11156.0 |
| 27.5° | 14145.1 | 14097.4 | 13422.3 | 12661.7 | 11842.8 | 11169.5 | 10492.1 | 9979.3 | 9463.9 | 9071.4 | 8662.1 |
| 30° | 11797.2 | 11681.7 | 10980.7 | 10198.9 | 9404.1 | 8800.5 | 8238.2 | 7826.4 | 7416.4 | 7105.0 | 6776.5 |
| 32.5° | 9644.2 | 9481.1 | 8798.8 | 8066.4 | 7396.6 | 6930.9 | 6513.9 | 6202.3 | 5871.2 | 5608.2 | 5332.5 |
| 35° | 7737.2 | 7563.4 | 6959.0 | 6338.1 | 5831.1 | 5487.8 | 5160.1 | 4904.4 | 4623.3 | 4401.4 | 4162.0 |
| 37.5° | 6100.6 | 5958.1 | 5451.8 | 4963.2 | 4579.8 | 4313.8 | 4045.2 | 3836.3 | 3603.9 | 3506.3 | 3250.5 |
| 40° | 4709.6 | 4610.0 | 4214.2 | 3854.0 | 3566.0 | 3441.1 | 3168.5 | 2973.3 | 2799.7 | 2656.5 | 2517.9 |
| 42.5° | 3673.6 | 3638.4 | 3253.1 | 2972.2 | 2769.4 | 2611.9 | 2460.0 | 2336.7 | 2216.7 | 2118.0 | 2024.7 |
| 45° | 2695.9 | 2668.0 | 2496.9 | 2334.8 | 2196.7 | 2086.6 | 1983.9 | 1899.0 | 1820.6 | 1755.6 | 1696.4 |
| 47.5° | 2099.2 | 2090.4 | 1991.8 | 1891.3 | 1804.2 | 1733.5 | 1666.9 | 1610.6 | 1558.5 | 1515.1 | 1501.0 |
| 50° | 1707.4 | 1706.3 | 1648.4 | 1586.4 | 1524.4 | 1483.6 | 1441.1 | 1407.7 | 1374.3 | 1348.3 | 1320.7 |
| 52.5° | 1450.8 | 1444.5 | 1405.4 | 1367.1 | 1330.3 | 1303.5 | 1276.3 | 1255.1 | 1232.9 | 1216.8 | 1199.7 |
| 55° | 1248.9 | 1255.5 | 1233.0 | 1210.1 | 1187.1 | 1170.4 | 1151.3 | 1137.3 | 1122.1 | 1112.0 | 1101.6 |
| 57.5° | 1108.8 | 1117.5 | 1105.7 | 1092.7 | 1078.7 | 1067.7 | 1054.6 | 1044.9 | 1034.8 | 1028.2 | 1022.2 |
| 60° | 1006.8 | 1016.4 | 1011.6 | 1005.0 | 996.4 | 989.9 | 981.5 | 976.1 | 969.6 | 966.0 | 962.6 |
| 62.5° | 920.3 | 932.3 | 930.5 | 927.4 | 921.9 | 918.3 | 913.7 | 911.3 | 907.0 | 905.4 | 903.8 |
| 65° | 834.0 | 847.4 | 847.1 | 845.6 | 842.5 | 841.5 | 838.6 | 838.2 | 835.9 | 836.8 | 836.6 |
| 67.5° | 766.1 | 777.7 | 780.3 | 782.2 | 782.1 | 782.8 | 782.5 | 783.7 | 783.7 | 785.3 | 786.4 |
| 70° | 717.1 | 725.2 | 727.1 | 729.1 | 729.7 | 731.2 | 731.2 | 732.2 | 732.0 | 733.4 | 733.5 |
| 72.5° | 667.6 | 678.3 | 680.2 | 681.8 | 681.8 | 683.3 | 682.6 | 682.3 | 680.1 | 679.7 | 678.2 |
| 75° | 606.0 | 619.7 | 622.6 | 624.6 | 624.9 | 626.2 | 624.4 | 623.2 | 619.7 | 618.2 | 615.8 |
| 77.5° | 541.6 | 555.9 | 557.9 | 558.7 | 557.5 | 557.8 | 553.9 | 551.2 | 546.8 | 544.9 | 542.5 |
| 80° | 457.9 | 478.8 | 480.4 | 479.2 | 475.9 | 475.4 | 471.6 | 469.1 | 463.7 | 461.9 | 459.8 |
| 82.5° | 348.4 | 373.0 | 376.4 | 377.8 | 375.2 | 375.9 | 372.2 | 370.9 | 365.9 | 365.0 | 361.7 |
| 85° | 220.0 | 244.5 | 248.6 | 248.0 | 245.3 | 244.7 | 242.5 | 243.3 | 242.8 | 244.2 | 244.9 |
| 87.5° | 101.1 | 124.8 | 130.5 | 128.7 | 128.4 | 126.8 | 123.0 | 124.3 | 126.7 | 128.2 | 128.2 |
| 90° | 73.3 | 84.3 | 87.9 | 85.3 | 80.2 | 77.2 | 72.4 | 69.8 | 65.3 | 62.7 | 58.3 |
| 92.5° | 97.7 | 103.5 | 109.4 | 104.1 | 99.0 | 93.7 | 88.5 | 83.2 | 78.1 | 72.8 | 67.7 |
| 95° | 122.3 | 130.6 | 139.0 | 132.1 | 125.1 | 118.1 | 111.1 | 104.2 | 97.2 | 90.3 | 83.4 |
| 97.5° | 137.4 | 147.2 | 157.1 | 150.1 | 143.2 | 136.1 | 129.2 | 122.3 | 115.3 | 108.2 | 101.3 |
| 100° | 238.8 | 261.5 | 284.4 | 264.6 | 244.8 | 225.1 | 205.4 | 185.6 | 165.9 | 146.2 | 126.3 |
| 102.5° | 543.2 | 598.7 | 654.3 | 604.2 | 554.3 | 504.3 | 454.3 | 404.4 | 354.5 | 304.3 | 254.5 |
| 105° | 981.1 | 1065.1 | 1149.3 | 1072.9 | 996.6 | 920.4 | 844.1 | 767.8 | 691.5 | 615.2 | 539.0 |
| 107.5° | 1322.4 | 1401.2 | 1480.2 | 1411.2 | 1342.3 | 1273.4 | 1204.3 | 1135.5 | 1066.6 | 997.6 | 928.7 |
| 110° | 1491.4 | 1553.4 | 1616.3 | 1569.9 | 1523.7 | 1477.4 | 1431.3 | 1385.0 | 1338.8 | 1292.7 | 1246.6 |



TEST NUMBER: P1444744
 CATALOG NUMBER: EHBR1-30-UNV-TA-L935-UPL40

CANDELA DISTRIBUTION (continued):

| | 220° | 222.5° | 225° | 227.5° | 230° | 232.5° | 235° | 237.5° | 240° | 242.5° | 245° |
|--------|--------|--------|--------|--------|--------|--------|--------|--------|--------|--------|--------|
| 112.5° | 1489.5 | 1534.8 | 1580.6 | 1553.4 | 1526.5 | 1499.4 | 1472.5 | 1445.4 | 1418.6 | 1391.6 | 1364.8 |
| 115° | 1360.1 | 1386.9 | 1414.4 | 1403.7 | 1393.2 | 1382.5 | 1371.9 | 1361.4 | 1350.8 | 1340.2 | 1329.9 |
| 117.5° | 1198.3 | 1211.2 | 1225.2 | 1223.3 | 1221.5 | 1219.6 | 1217.8 | 1216.0 | 1214.4 | 1212.7 | 1210.9 |
| 120° | 1029.1 | 1032.1 | 1036.2 | 1037.7 | 1039.3 | 1040.8 | 1042.5 | 1044.0 | 1045.6 | 1047.3 | 1049.0 |
| 122.5° | 885.9 | 882.9 | 880.9 | 882.3 | 883.9 | 885.2 | 886.8 | 888.1 | 889.7 | 891.3 | 892.9 |
| 125° | 783.0 | 777.2 | 772.7 | 771.1 | 769.6 | 767.8 | 766.1 | 764.5 | 763.0 | 761.4 | 760.0 |
| 127.5° | 707.5 | 701.1 | 696.2 | 692.2 | 688.2 | 684.0 | 679.9 | 675.8 | 672.0 | 667.8 | 663.9 |
| 130° | 653.7 | 647.8 | 643.5 | 638.2 | 633.3 | 627.9 | 622.8 | 617.7 | 612.5 | 607.3 | 602.2 |
| 132.5° | 614.4 | 608.6 | 604.8 | 599.9 | 595.0 | 590.0 | 585.1 | 580.1 | 575.1 | 570.1 | 565.2 |
| 135° | 587.8 | 582.9 | 580.0 | 575.3 | 571.1 | 566.5 | 561.9 | 557.5 | 553.0 | 548.3 | 544.1 |
| 137.5° | 564.2 | 559.5 | 557.0 | 553.4 | 550.1 | 546.4 | 543.0 | 539.2 | 535.6 | 531.9 | 528.5 |
| 140° | 543.8 | 538.9 | 536.2 | 534.3 | 532.4 | 530.3 | 528.5 | 526.4 | 524.5 | 522.5 | 520.4 |
| 142.5° | 527.8 | 523.1 | 521.0 | 519.8 | 518.7 | 517.3 | 516.3 | 515.1 | 514.0 | 512.4 | 511.3 |
| 145° | 511.4 | 506.2 | 503.6 | 503.6 | 503.7 | 503.6 | 503.6 | 503.6 | 503.6 | 503.5 | 503.5 |
| 147.5° | 499.6 | 494.2 | 491.8 | 492.1 | 492.5 | 492.9 | 493.3 | 493.5 | 493.9 | 494.2 | 494.6 |
| 150° | 486.5 | 480.5 | 477.6 | 478.4 | 478.9 | 479.6 | 480.3 | 481.0 | 481.7 | 482.3 | 483.0 |
| 152.5° | 475.3 | 468.2 | 464.9 | 465.7 | 466.5 | 467.1 | 467.9 | 468.8 | 469.6 | 470.4 | 471.1 |
| 155° | 465.6 | 458.0 | 454.5 | 454.7 | 455.1 | 455.4 | 455.8 | 456.2 | 456.7 | 457.1 | 457.6 |
| 157.5° | 459.2 | 451.4 | 448.1 | 448.0 | 448.2 | 448.3 | 448.5 | 448.6 | 448.9 | 449.1 | 449.5 |
| 160° | 454.6 | 446.8 | 443.7 | 443.6 | 443.8 | 443.8 | 443.9 | 444.0 | 444.3 | 444.5 | 444.8 |
| 162.5° | 450.3 | 442.7 | 439.7 | 439.5 | 439.5 | 439.6 | 439.7 | 439.7 | 439.8 | 439.9 | 440.3 |
| 165° | 446.7 | 440.3 | 437.7 | 437.8 | 438.0 | 438.1 | 438.4 | 438.7 | 439.1 | 439.4 | 439.8 |
| 167.5° | 447.5 | 441.8 | 439.8 | 439.6 | 439.3 | 439.0 | 439.0 | 438.7 | 438.7 | 438.5 | 438.5 |
| 170° | 445.8 | 441.3 | 439.5 | 439.5 | 439.8 | 439.8 | 439.8 | 439.9 | 440.0 | 440.0 | 440.3 |
| 172.5° | 445.1 | 441.7 | 440.4 | 440.7 | 441.2 | 441.5 | 441.9 | 442.3 | 442.7 | 443.1 | 443.6 |
| 175° | 445.5 | 443.4 | 442.8 | 442.8 | 443.1 | 443.3 | 443.6 | 443.7 | 444.0 | 444.2 | 444.6 |
| 177.5° | 447.7 | 447.0 | 446.6 | 446.6 | 446.6 | 446.6 | 446.6 | 446.6 | 446.6 | 446.7 | 446.7 |
| 180° | 446.5 | 446.5 | 446.5 | 446.5 | 446.5 | 446.5 | 446.5 | 446.5 | 446.5 | 446.5 | 446.5 |



TEST NUMBER: P1444744
 CATALOG NUMBER: EHBR1-30-UNV-TA-L935-UPL40

CANDELA DISTRIBUTION (continued):

| | 247.5° | 250° | 252.5° | 255° | 257.5° | 260° | 262.5° | 265° | 267.5° | 270° | 272.5° |
|--------|---------|---------|---------|---------|---------|---------|---------|---------|---------|---------|---------|
| 0° | 23817.7 | 23817.7 | 23817.7 | 23817.7 | 23817.7 | 23817.7 | 23817.7 | 23817.7 | 23817.7 | 23817.7 | 23817.7 |
| 2.5° | 24003.9 | 24031.9 | 24029.8 | 24055.9 | 24054.5 | 24079.2 | 24074.2 | 24095.5 | 24090.7 | 24108.8 | 24098.1 |
| 5° | 24791.3 | 24844.5 | 24862.1 | 24910.1 | 24920.1 | 24963.0 | 24963.9 | 24998.1 | 24993.9 | 25020.7 | 25006.4 |
| 7.5° | 25536.1 | 25585.8 | 25609.3 | 25646.7 | 25665.3 | 25696.2 | 25708.3 | 25733.8 | 25739.8 | 25754.8 | 25754.3 |
| 10° | 25598.9 | 25598.7 | 25610.4 | 25605.2 | 25615.6 | 25609.6 | 25622.3 | 25617.8 | 25636.5 | 25631.7 | 25645.9 |
| 12.5° | 24753.1 | 24669.2 | 24638.6 | 24563.2 | 24546.7 | 24481.9 | 24486.6 | 24445.1 | 24465.1 | 24439.6 | 24483.0 |
| 15° | 22935.4 | 22740.6 | 22644.4 | 22475.1 | 22421.9 | 22288.2 | 22277.3 | 22188.4 | 22212.4 | 22165.9 | 22233.9 |
| 17.5° | 20249.2 | 19942.6 | 19774.4 | 19527.1 | 19429.0 | 19239.7 | 19201.8 | 19087.4 | 19105.1 | 19047.4 | 19129.5 |
| 20° | 17046.5 | 16676.0 | 16463.8 | 16177.9 | 16050.4 | 15824.8 | 15764.9 | 15636.9 | 15652.9 | 15595.6 | 15688.5 |
| 22.5° | 13807.3 | 13419.6 | 13179.9 | 12880.3 | 12717.4 | 12505.3 | 12441.5 | 12312.9 | 12320.3 | 12266.4 | 12355.8 |
| 25° | 10830.6 | 10458.9 | 10226.3 | 9954.1 | 9812.7 | 9618.2 | 9551.3 | 9435.9 | 9442.4 | 9398.0 | 9478.1 |
| 27.5° | 8378.3 | 8073.2 | 7878.6 | 7650.5 | 7523.8 | 7363.8 | 7298.6 | 7201.5 | 7201.2 | 7168.7 | 7235.7 |
| 30° | 6547.1 | 6292.6 | 6117.9 | 5919.2 | 5800.2 | 5655.9 | 5592.9 | 5506.0 | 5502.2 | 5479.1 | 5532.3 |
| 32.5° | 5126.3 | 4899.9 | 4740.6 | 4565.6 | 4458.9 | 4335.0 | 4275.3 | 4205.5 | 4199.1 | 4178.3 | 4222.0 |
| 35° | 3985.0 | 3794.3 | 3657.3 | 3510.1 | 3521.0 | 3338.3 | 3368.6 | 3226.7 | 3188.2 | 3179.8 | 3212.3 |
| 37.5° | 3080.0 | 2932.2 | 2820.9 | 2710.7 | 2636.1 | 2558.8 | 2517.2 | 2479.9 | 2475.6 | 2472.0 | 2494.9 |
| 40° | 2410.7 | 2307.4 | 2226.5 | 2150.8 | 2099.4 | 2052.3 | 2026.3 | 2005.8 | 2000.9 | 1998.2 | 2012.0 |
| 42.5° | 1951.1 | 1881.4 | 1829.2 | 1783.1 | 1751.8 | 1726.2 | 1712.0 | 1700.5 | 1696.7 | 1696.8 | 1705.0 |
| 45° | 1648.4 | 1606.2 | 1572.6 | 1543.8 | 1523.9 | 1532.7 | 1506.9 | 1520.4 | 1502.5 | 1521.0 | 1508.9 |
| 47.5° | 1451.7 | 1415.7 | 1394.8 | 1374.5 | 1362.5 | 1352.8 | 1353.1 | 1353.3 | 1357.0 | 1357.7 | 1361.7 |
| 50° | 1299.9 | 1279.0 | 1264.6 | 1251.6 | 1245.3 | 1240.2 | 1241.9 | 1243.3 | 1247.0 | 1247.3 | 1250.2 |
| 52.5° | 1187.5 | 1173.8 | 1165.1 | 1157.0 | 1154.2 | 1151.3 | 1152.6 | 1152.0 | 1153.7 | 1152.9 | 1155.2 |
| 55° | 1096.0 | 1089.6 | 1086.9 | 1083.9 | 1084.3 | 1083.5 | 1084.1 | 1081.2 | 1079.3 | 1077.2 | 1079.2 |
| 57.5° | 1021.1 | 1020.2 | 1022.0 | 1023.2 | 1026.7 | 1028.0 | 1028.7 | 1025.3 | 1022.2 | 1019.3 | 1021.0 |
| 60° | 963.2 | 964.6 | 969.2 | 972.9 | 977.8 | 980.2 | 981.6 | 979.7 | 977.3 | 974.9 | 976.4 |
| 62.5° | 906.1 | 908.4 | 913.9 | 918.0 | 924.0 | 927.1 | 930.5 | 930.7 | 931.6 | 930.7 | 931.7 |
| 65° | 840.0 | 842.7 | 847.7 | 851.1 | 856.7 | 859.4 | 862.9 | 863.6 | 865.5 | 865.1 | 866.7 |
| 67.5° | 789.7 | 792.1 | 796.3 | 799.6 | 804.5 | 807.4 | 810.4 | 810.6 | 811.3 | 811.2 | 812.7 |
| 70° | 736.0 | 737.2 | 740.9 | 743.6 | 748.6 | 751.5 | 755.1 | 756.2 | 758.3 | 758.7 | 760.5 |
| 72.5° | 678.8 | 678.3 | 680.5 | 681.7 | 685.5 | 687.7 | 692.3 | 694.7 | 698.4 | 699.4 | 700.7 |
| 75° | 616.5 | 615.9 | 618.6 | 619.7 | 622.8 | 625.1 | 630.2 | 633.4 | 639.1 | 641.6 | 641.0 |
| 77.5° | 544.3 | 545.6 | 550.5 | 553.3 | 557.5 | 560.5 | 567.0 | 572.2 | 582.7 | 587.3 | 582.6 |
| 80° | 463.7 | 465.0 | 470.1 | 472.7 | 478.3 | 481.8 | 489.1 | 495.2 | 504.6 | 506.6 | 504.0 |
| 82.5° | 364.5 | 364.9 | 369.5 | 371.4 | 378.7 | 383.9 | 393.2 | 398.1 | 403.9 | 403.0 | 402.2 |
| 85° | 248.6 | 252.0 | 257.7 | 263.4 | 272.3 | 280.7 | 289.5 | 296.6 | 291.6 | 299.6 | 290.6 |
| 87.5° | 132.9 | 132.5 | 140.3 | 139.0 | 151.4 | 158.5 | 166.1 | 169.8 | 173.8 | 173.0 | 173.1 |
| 90° | 56.0 | 53.1 | 52.3 | 49.2 | 49.0 | 45.8 | 46.2 | 43.1 | 44.0 | 40.4 | 45.5 |
| 92.5° | 62.4 | 59.6 | 56.7 | 54.0 | 51.1 | 48.3 | 45.4 | 42.6 | 39.8 | 37.0 | 39.8 |
| 95° | 76.4 | 73.8 | 71.2 | 68.5 | 65.9 | 63.4 | 60.7 | 58.1 | 55.6 | 52.9 | 56.2 |
| 97.5° | 94.3 | 92.8 | 91.3 | 89.8 | 88.3 | 86.7 | 85.2 | 83.7 | 82.1 | 80.6 | 82.7 |
| 100° | 106.6 | 106.6 | 106.6 | 106.6 | 106.4 | 106.4 | 106.4 | 106.4 | 106.4 | 106.4 | 108.1 |
| 102.5° | 204.5 | 199.5 | 194.5 | 189.4 | 184.4 | 179.4 | 174.4 | 169.4 | 164.4 | 159.4 | 166.8 |
| 105° | 462.8 | 443.3 | 423.6 | 404.1 | 384.5 | 365.0 | 345.4 | 325.9 | 306.3 | 286.9 | 307.1 |
| 107.5° | 859.9 | 824.2 | 788.6 | 753.0 | 717.3 | 681.7 | 646.1 | 610.5 | 575.0 | 539.4 | 571.3 |
| 110° | 1200.3 | 1162.5 | 1124.7 | 1086.9 | 1049.1 | 1011.2 | 973.5 | 935.7 | 898.0 | 860.2 | 890.6 |



TEST NUMBER: P1444744
 CATALOG NUMBER: EHBR1-30-UNV-TA-L935-UPL40

CANDELA DISTRIBUTION (continued):

| | 247.5° | 250° | 252.5° | 255° | 257.5° | 260° | 262.5° | 265° | 267.5° | 270° | 272.5° |
|--------|--------|--------|--------|--------|--------|--------|--------|--------|--------|--------|--------|
| 112.5° | 1337.9 | 1313.4 | 1289.0 | 1264.6 | 1240.2 | 1215.8 | 1191.5 | 1167.2 | 1142.9 | 1118.6 | 1133.4 |
| 115° | 1319.3 | 1307.7 | 1296.0 | 1284.4 | 1272.8 | 1261.2 | 1249.6 | 1238.1 | 1226.6 | 1215.1 | 1216.0 |
| 117.5° | 1209.3 | 1205.3 | 1201.4 | 1197.6 | 1193.7 | 1189.9 | 1186.1 | 1182.5 | 1178.7 | 1175.1 | 1166.8 |
| 120° | 1050.9 | 1052.1 | 1053.2 | 1054.5 | 1055.9 | 1057.3 | 1058.6 | 1060.0 | 1061.6 | 1063.1 | 1052.1 |
| 122.5° | 894.5 | 897.4 | 900.3 | 903.2 | 906.2 | 909.3 | 912.4 | 915.7 | 918.9 | 922.2 | 911.1 |
| 125° | 758.3 | 761.1 | 763.9 | 766.9 | 769.7 | 772.9 | 776.0 | 779.3 | 782.4 | 785.8 | 776.5 |
| 127.5° | 659.9 | 660.9 | 661.9 | 663.0 | 664.1 | 665.4 | 666.8 | 668.1 | 669.7 | 671.3 | 665.4 |
| 130° | 597.0 | 596.0 | 595.0 | 594.2 | 593.2 | 592.6 | 591.9 | 591.4 | 590.8 | 590.5 | 587.8 |
| 132.5° | 560.2 | 557.8 | 555.5 | 553.2 | 551.0 | 549.1 | 547.0 | 545.2 | 543.3 | 541.7 | 540.9 |
| 135° | 539.4 | 536.2 | 532.9 | 529.8 | 526.7 | 523.9 | 521.0 | 518.4 | 515.7 | 513.2 | 513.5 |
| 137.5° | 524.9 | 521.7 | 518.5 | 515.4 | 512.3 | 509.5 | 506.5 | 503.8 | 501.3 | 498.8 | 499.7 |
| 140° | 518.5 | 515.2 | 512.0 | 509.0 | 506.0 | 503.1 | 500.2 | 497.7 | 494.9 | 492.5 | 493.0 |
| 142.5° | 510.0 | 507.3 | 504.2 | 501.5 | 498.8 | 496.1 | 493.6 | 491.2 | 488.6 | 486.5 | 487.2 |
| 145° | 503.5 | 501.4 | 499.2 | 497.0 | 495.0 | 493.2 | 491.1 | 489.4 | 487.7 | 486.2 | 486.5 |
| 147.5° | 494.8 | 493.3 | 491.5 | 490.1 | 488.4 | 487.1 | 485.6 | 484.4 | 483.1 | 482.0 | 482.1 |
| 150° | 483.6 | 482.6 | 481.5 | 480.5 | 479.5 | 478.6 | 477.7 | 476.9 | 476.1 | 475.4 | 475.3 |
| 152.5° | 471.9 | 471.0 | 470.0 | 469.1 | 468.2 | 467.4 | 466.6 | 465.9 | 465.1 | 464.4 | 464.3 |
| 155° | 458.1 | 457.6 | 457.2 | 456.8 | 456.3 | 456.2 | 455.7 | 455.6 | 455.2 | 455.1 | 455.2 |
| 157.5° | 449.7 | 449.6 | 449.4 | 449.4 | 449.3 | 449.3 | 449.1 | 449.3 | 449.1 | 449.3 | 449.4 |
| 160° | 445.2 | 444.9 | 444.5 | 444.4 | 444.1 | 443.8 | 443.6 | 443.6 | 443.4 | 443.2 | 443.6 |
| 162.5° | 440.5 | 440.7 | 440.8 | 440.9 | 441.2 | 441.4 | 441.7 | 442.0 | 442.2 | 442.6 | 442.8 |
| 165° | 440.3 | 440.2 | 439.9 | 439.8 | 439.9 | 439.8 | 439.8 | 440.0 | 439.9 | 440.1 | 440.6 |
| 167.5° | 438.4 | 438.7 | 438.8 | 439.1 | 439.4 | 439.8 | 440.1 | 440.6 | 441.0 | 441.6 | 441.9 |
| 170° | 440.3 | 440.3 | 440.3 | 440.3 | 440.3 | 440.5 | 440.6 | 440.7 | 440.7 | 441.0 | 441.3 |
| 172.5° | 443.9 | 443.9 | 443.7 | 443.9 | 443.7 | 443.9 | 443.9 | 444.0 | 444.0 | 444.1 | 444.3 |
| 175° | 444.6 | 445.0 | 445.3 | 445.6 | 445.6 | 445.9 | 446.1 | 446.3 | 446.5 | 446.8 | 446.8 |
| 177.5° | 446.7 | 446.8 | 446.8 | 446.8 | 446.8 | 446.9 | 446.9 | 446.9 | 446.9 | 446.8 | 447.0 |
| 180° | 446.5 | 446.5 | 446.5 | 446.5 | 446.5 | 446.5 | 446.5 | 446.5 | 446.5 | 446.5 | 446.5 |



TEST NUMBER: P1444744
 CATALOG NUMBER: EHBR1-30-UNV-TA-L935-UPL40

CANDELA DISTRIBUTION (continued):

| | 275° | 277.5° | 280° | 282.5° | 285° | 287.5° | 290° | 292.5° | 295° | 297.5° | 300° |
|--------|---------|---------|---------|---------|---------|---------|---------|---------|---------|---------|---------|
| 0° | 23817.7 | 23817.7 | 23817.7 | 23817.7 | 23817.7 | 23817.7 | 23817.7 | 23817.7 | 23817.7 | 23817.7 | 23817.7 |
| 2.5° | 24115.9 | 24103.8 | 24116.1 | 24103.6 | 24116.1 | 24101.1 | 24111.3 | 24095.0 | 24099.2 | 24082.3 | 24086.7 |
| 5° | 25027.7 | 25008.5 | 25018.8 | 24993.7 | 24996.4 | 24963.0 | 24962.4 | 24923.6 | 24913.4 | 24869.1 | 24849.6 |
| 7.5° | 25765.0 | 25758.8 | 25762.3 | 25746.3 | 25744.4 | 25721.6 | 25710.7 | 25678.7 | 25658.4 | 25617.8 | 25589.9 |
| 10° | 25648.4 | 25667.1 | 25672.0 | 25691.2 | 25695.2 | 25714.1 | 25718.1 | 25737.1 | 25741.0 | 25755.1 | 25755.2 |
| 12.5° | 24480.9 | 24544.8 | 24560.1 | 24638.9 | 24672.1 | 24762.3 | 24810.7 | 24910.1 | 24969.1 | 25068.2 | 25129.2 |
| 15° | 22232.0 | 22342.5 | 22386.5 | 22540.4 | 22625.6 | 22805.3 | 22918.3 | 23124.6 | 23270.3 | 23489.4 | 23645.8 |
| 17.5° | 19136.8 | 19291.0 | 19360.7 | 19569.5 | 19705.7 | 19971.0 | 20162.1 | 20476.8 | 20717.7 | 21067.4 | 21344.6 |
| 20° | 15704.3 | 15875.9 | 15970.4 | 16208.5 | 16369.3 | 16679.2 | 16917.9 | 17304.6 | 17627.1 | 18070.2 | 18449.1 |
| 22.5° | 12383.7 | 12546.9 | 12651.9 | 12894.3 | 13075.2 | 13398.4 | 13665.2 | 14073.4 | 14434.7 | 14934.0 | 15388.3 |
| 25° | 9508.4 | 9657.9 | 9752.8 | 9972.0 | 10141.9 | 10438.9 | 10693.7 | 11086.2 | 11439.8 | 11940.6 | 12406.6 |
| 27.5° | 7269.0 | 7394.3 | 7485.7 | 7672.6 | 7822.5 | 8074.4 | 8293.3 | 8617.6 | 8922.3 | 9355.6 | 9770.5 |
| 30° | 5565.0 | 5676.1 | 5765.1 | 5927.8 | 6066.8 | 6285.2 | 6477.6 | 6750.1 | 7002.2 | 7347.0 | 7677.1 |
| 32.5° | 4252.7 | 4348.2 | 4427.5 | 4570.0 | 4696.1 | 4892.7 | 5066.1 | 5304.9 | 5521.3 | 5813.7 | 6085.3 |
| 35° | 3242.5 | 3430.5 | 3417.2 | 3613.7 | 3645.3 | 3786.5 | 3941.2 | 4150.0 | 4341.6 | 4590.3 | 4821.4 |
| 37.5° | 2516.7 | 2569.5 | 2626.3 | 2713.1 | 2804.4 | 2932.8 | 3063.5 | 3318.6 | 3412.2 | 3600.1 | 3791.4 |
| 40° | 2029.5 | 2065.2 | 2102.6 | 2161.3 | 2225.2 | 2315.7 | 2410.8 | 2532.6 | 2657.4 | 2809.7 | 2965.3 |
| 42.5° | 1715.8 | 1736.0 | 1759.8 | 1794.3 | 1833.7 | 1891.1 | 1954.7 | 2037.2 | 2124.0 | 2231.2 | 2340.7 |
| 45° | 1532.9 | 1523.3 | 1530.3 | 1548.9 | 1572.7 | 1607.5 | 1647.7 | 1698.8 | 1755.3 | 1824.7 | 1898.8 |
| 47.5° | 1362.5 | 1366.4 | 1368.5 | 1378.5 | 1391.2 | 1414.6 | 1439.0 | 1473.7 | 1540.7 | 1561.1 | 1601.4 |
| 50° | 1249.9 | 1251.7 | 1251.2 | 1256.3 | 1262.7 | 1277.9 | 1293.7 | 1317.2 | 1340.6 | 1371.7 | 1401.4 |
| 52.5° | 1155.6 | 1158.2 | 1157.8 | 1161.2 | 1164.6 | 1174.2 | 1184.2 | 1200.9 | 1216.2 | 1236.0 | 1253.0 |
| 55° | 1081.1 | 1084.7 | 1086.1 | 1089.0 | 1090.6 | 1095.7 | 1099.6 | 1107.5 | 1114.1 | 1125.3 | 1135.6 |
| 57.5° | 1023.8 | 1028.7 | 1031.0 | 1031.9 | 1030.0 | 1029.7 | 1028.3 | 1030.0 | 1031.4 | 1037.4 | 1043.2 |
| 60° | 978.7 | 982.6 | 983.3 | 982.6 | 978.9 | 976.3 | 972.0 | 970.7 | 970.0 | 972.9 | 976.1 |
| 62.5° | 931.4 | 932.9 | 931.9 | 930.7 | 926.5 | 923.9 | 919.6 | 917.9 | 916.4 | 918.5 | 920.1 |
| 65° | 866.1 | 867.4 | 866.1 | 865.5 | 861.6 | 859.6 | 855.8 | 854.7 | 852.5 | 853.0 | 852.7 |
| 67.5° | 813.1 | 814.3 | 813.3 | 812.3 | 809.7 | 808.4 | 805.7 | 804.0 | 801.4 | 800.5 | 798.7 |
| 70° | 760.2 | 761.1 | 759.7 | 758.7 | 755.7 | 754.5 | 752.0 | 751.4 | 749.4 | 749.0 | 747.0 |
| 72.5° | 699.4 | 699.5 | 697.3 | 696.7 | 694.5 | 694.4 | 693.3 | 694.3 | 694.2 | 695.3 | 694.9 |
| 75° | 637.1 | 636.2 | 633.6 | 633.2 | 631.5 | 632.3 | 631.2 | 632.6 | 632.8 | 635.2 | 635.3 |
| 77.5° | 574.8 | 571.5 | 566.5 | 564.1 | 560.7 | 560.4 | 558.4 | 559.7 | 559.3 | 561.9 | 563.0 |
| 80° | 496.1 | 492.1 | 485.7 | 482.6 | 478.6 | 478.0 | 476.2 | 478.0 | 477.1 | 480.2 | 482.4 |
| 82.5° | 396.1 | 392.6 | 385.9 | 383.5 | 378.8 | 379.3 | 377.4 | 379.3 | 379.0 | 383.6 | 386.3 |
| 85° | 293.0 | 290.7 | 283.8 | 277.7 | 270.9 | 266.9 | 263.0 | 262.4 | 261.2 | 263.0 | 264.6 |
| 87.5° | 169.2 | 167.1 | 161.7 | 158.2 | 146.3 | 146.8 | 142.1 | 141.8 | 140.7 | 139.7 | 142.1 |
| 90° | 46.0 | 50.5 | 51.1 | 55.3 | 56.4 | 61.0 | 62.3 | 66.8 | 68.0 | 72.7 | 74.5 |
| 92.5° | 42.6 | 45.4 | 48.2 | 51.1 | 53.9 | 56.7 | 59.5 | 62.4 | 68.4 | 74.3 | 80.6 |
| 95° | 59.5 | 62.7 | 66.0 | 69.2 | 72.4 | 75.7 | 78.9 | 82.2 | 91.1 | 100.0 | 108.9 |
| 97.5° | 85.0 | 87.1 | 89.3 | 91.4 | 93.6 | 95.8 | 98.0 | 100.1 | 109.8 | 119.4 | 128.9 |
| 100° | 109.8 | 111.6 | 113.3 | 115.1 | 116.8 | 118.5 | 120.3 | 122.0 | 140.7 | 159.1 | 177.5 |
| 102.5° | 174.2 | 181.5 | 189.0 | 196.3 | 203.8 | 211.2 | 218.6 | 225.9 | 268.4 | 310.7 | 353.0 |
| 105° | 327.2 | 347.4 | 367.7 | 387.8 | 408.0 | 428.2 | 448.5 | 468.7 | 536.5 | 604.2 | 672.0 |
| 107.5° | 603.2 | 635.1 | 667.0 | 698.9 | 730.8 | 762.8 | 794.7 | 826.7 | 892.7 | 958.9 | 1025.0 |
| 110° | 920.9 | 951.4 | 981.7 | 1012.3 | 1042.6 | 1073.1 | 1103.5 | 1134.1 | 1173.8 | 1213.4 | 1253.0 |



TEST NUMBER: P1444744
 CATALOG NUMBER: EHBR1-30-UNV-TA-L935-UPL40

CANDELA DISTRIBUTION (continued):

| | 275° | 277.5° | 280° | 282.5° | 285° | 287.5° | 290° | 292.5° | 295° | 297.5° | 300° |
|--------|--------|--------|--------|--------|--------|--------|--------|--------|--------|--------|--------|
| 112.5° | 1148.2 | 1162.9 | 1177.8 | 1192.6 | 1207.5 | 1222.4 | 1237.2 | 1252.2 | 1272.0 | 1291.6 | 1311.5 |
| 115° | 1216.9 | 1217.8 | 1218.8 | 1219.7 | 1220.7 | 1221.7 | 1222.9 | 1224.0 | 1230.3 | 1236.3 | 1242.6 |
| 117.5° | 1158.7 | 1150.5 | 1142.4 | 1134.4 | 1126.3 | 1118.4 | 1110.4 | 1102.5 | 1101.2 | 1099.8 | 1098.5 |
| 120° | 1041.3 | 1030.3 | 1019.4 | 1008.4 | 997.7 | 986.9 | 976.2 | 965.6 | 960.1 | 954.5 | 949.1 |
| 122.5° | 900.3 | 889.4 | 878.6 | 867.7 | 857.0 | 846.4 | 835.9 | 825.4 | 821.4 | 817.4 | 813.6 |
| 125° | 767.3 | 758.2 | 749.2 | 740.1 | 731.3 | 722.5 | 713.8 | 705.1 | 704.8 | 704.2 | 704.0 |
| 127.5° | 659.9 | 654.3 | 648.8 | 643.4 | 638.1 | 632.7 | 627.6 | 622.4 | 624.6 | 626.6 | 628.8 |
| 130° | 585.3 | 582.9 | 580.6 | 578.1 | 576.0 | 573.8 | 571.7 | 569.6 | 573.6 | 577.3 | 581.4 |
| 132.5° | 540.5 | 540.0 | 539.6 | 539.3 | 539.2 | 539.0 | 539.1 | 538.8 | 543.4 | 547.9 | 552.5 |
| 135° | 514.1 | 514.6 | 515.5 | 516.2 | 517.3 | 518.1 | 519.2 | 520.1 | 524.6 | 528.8 | 533.2 |
| 137.5° | 500.7 | 501.7 | 502.8 | 504.0 | 505.5 | 506.7 | 508.3 | 509.6 | 513.0 | 516.4 | 519.8 |
| 140° | 493.9 | 494.6 | 495.7 | 496.7 | 497.8 | 498.7 | 500.0 | 501.1 | 504.0 | 506.5 | 509.2 |
| 142.5° | 488.1 | 488.5 | 489.5 | 490.5 | 491.6 | 492.5 | 493.7 | 494.6 | 496.6 | 498.5 | 500.7 |
| 145° | 487.2 | 487.6 | 488.4 | 489.0 | 489.7 | 490.4 | 491.3 | 492.0 | 493.3 | 494.4 | 495.6 |
| 147.5° | 482.4 | 482.7 | 483.2 | 483.6 | 484.2 | 484.6 | 485.1 | 485.4 | 486.2 | 487.0 | 487.7 |
| 150° | 475.4 | 475.5 | 475.6 | 475.6 | 475.9 | 476.2 | 476.5 | 476.6 | 477.3 | 477.9 | 478.6 |
| 152.5° | 464.4 | 464.4 | 464.5 | 464.6 | 464.8 | 464.9 | 465.0 | 465.3 | 465.9 | 466.4 | 467.0 |
| 155° | 455.4 | 455.8 | 456.2 | 456.4 | 456.9 | 457.1 | 457.5 | 457.7 | 458.1 | 458.5 | 459.0 |
| 157.5° | 449.8 | 450.0 | 450.4 | 450.6 | 451.1 | 451.3 | 451.6 | 451.9 | 452.3 | 452.6 | 453.0 |
| 160° | 444.2 | 444.7 | 445.2 | 445.8 | 446.3 | 446.7 | 447.4 | 447.9 | 448.3 | 448.5 | 448.9 |
| 162.5° | 443.2 | 443.6 | 443.9 | 444.2 | 444.5 | 444.8 | 445.1 | 445.5 | 446.1 | 446.5 | 447.2 |
| 165° | 441.2 | 441.7 | 442.3 | 442.7 | 443.3 | 443.8 | 444.4 | 444.9 | 445.2 | 445.6 | 445.8 |
| 167.5° | 442.6 | 442.9 | 443.6 | 444.1 | 444.6 | 445.1 | 445.7 | 446.2 | 446.5 | 446.7 | 447.1 |
| 170° | 441.8 | 442.3 | 442.8 | 443.3 | 443.8 | 444.2 | 444.7 | 445.1 | 445.6 | 446.1 | 446.6 |
| 172.5° | 444.7 | 445.1 | 445.6 | 445.8 | 446.3 | 446.7 | 447.2 | 447.5 | 447.9 | 448.4 | 448.7 |
| 175° | 446.8 | 446.8 | 446.9 | 447.0 | 447.1 | 447.1 | 447.2 | 447.4 | 447.5 | 447.5 | 447.6 |
| 177.5° | 447.3 | 447.5 | 447.6 | 447.9 | 448.1 | 448.3 | 448.5 | 448.7 | 448.7 | 448.7 | 448.7 |
| 180° | 446.5 | 446.5 | 446.5 | 446.5 | 446.5 | 446.5 | 446.5 | 446.5 | 446.5 | 446.5 | 446.5 |



TEST NUMBER: P1444744
 CATALOG NUMBER: EHBR1-30-UNV-TA-L935-UPL40

CANDELA DISTRIBUTION (continued):

| | 302.5° | 305° | 307.5° | 310° | 312.5° | 315° | 317.5° | 320° | 322.5° | 325° | 327.5° |
|--------|---------|---------|---------|---------|---------|---------|---------|---------|---------|---------|---------|
| 0° | 23817.7 | 23817.7 | 23817.7 | 23817.7 | 23817.7 | 23817.7 | 23817.7 | 23817.7 | 23817.7 | 23817.7 | 23817.7 |
| 2.5° | 24069.8 | 24070.8 | 24051.4 | 24050.3 | 24032.2 | 24029.9 | 24012.2 | 24006.8 | 23992.4 | 23987.2 | 23972.5 |
| 5° | 24800.1 | 24776.4 | 24721.8 | 24689.7 | 24635.7 | 24599.9 | 24541.4 | 24503.3 | 24446.9 | 24404.4 | 24347.6 |
| 7.5° | 25538.6 | 25501.9 | 25440.6 | 25390.9 | 25315.9 | 25256.1 | 25168.4 | 25096.6 | 25001.6 | 24919.4 | 24819.6 |
| 10° | 25755.2 | 25749.6 | 25733.9 | 25711.2 | 25676.3 | 25637.2 | 25577.5 | 25515.2 | 25432.0 | 25341.6 | 25230.8 |
| 12.5° | 25222.3 | 25279.9 | 25358.3 | 25404.9 | 25461.4 | 25486.2 | 25509.4 | 25503.6 | 25488.3 | 25442.6 | 25378.5 |
| 15° | 23872.2 | 24033.9 | 24248.0 | 24414.0 | 24604.9 | 24743.7 | 24897.0 | 24992.4 | 25087.6 | 25131.6 | 25158.5 |
| 17.5° | 21724.4 | 22030.7 | 22414.6 | 22732.8 | 23100.0 | 23394.9 | 23718.2 | 23961.5 | 24211.8 | 24391.0 | 24553.2 |
| 20° | 18965.7 | 19409.3 | 19952.4 | 20432.2 | 20990.0 | 21474.8 | 22006.0 | 22442.2 | 22891.9 | 23243.6 | 23576.4 |
| 22.5° | 15973.4 | 16500.3 | 17156.8 | 17765.0 | 18484.2 | 19130.5 | 19859.8 | 20494.4 | 21157.1 | 21710.7 | 22245.9 |
| 25° | 13030.9 | 13608.8 | 14326.7 | 15005.3 | 15819.7 | 16571.5 | 17436.3 | 18227.3 | 19083.8 | 19827.4 | 20562.0 |
| 27.5° | 10344.0 | 10911.4 | 11644.3 | 12366.6 | 13227.9 | 14029.0 | 14955.5 | 15827.0 | 16802.3 | 17701.6 | 18621.5 |
| 30° | 8135.7 | 8616.8 | 9274.0 | 9973.7 | 10823.1 | 11638.3 | 12575.0 | 13471.2 | 14485.8 | 15467.7 | 16503.9 |
| 32.5° | 6445.6 | 6812.2 | 7328.9 | 7920.5 | 8704.3 | 9480.2 | 10372.1 | 11237.4 | 12236.4 | 13228.3 | 14306.0 |
| 35° | 5119.0 | 5404.9 | 5798.9 | 6260.6 | 6924.3 | 7593.2 | 8382.1 | 9168.9 | 10100.9 | 11042.2 | 12089.7 |
| 37.5° | 4036.6 | 4268.6 | 4577.1 | 4923.9 | 5456.3 | 6005.2 | 6652.1 | 7304.5 | 8114.4 | 8948.6 | 9898.0 |
| 40° | 3152.1 | 3340.0 | 3580.2 | 3838.8 | 4240.8 | 4663.8 | 5164.1 | 5669.9 | 6320.6 | 7002.5 | 7788.2 |
| 42.5° | 2476.3 | 2614.9 | 2784.5 | 2973.5 | 3348.6 | 3573.1 | 3912.4 | 4278.2 | 4756.6 | 5251.6 | 5842.3 |
| 45° | 1988.7 | 2083.2 | 2200.8 | 2327.6 | 2501.7 | 2692.2 | 2924.5 | 3168.2 | 3622.6 | 3845.5 | 4204.7 |
| 47.5° | 1660.8 | 1724.2 | 1799.1 | 1878.9 | 1981.6 | 2092.4 | 2230.2 | 2371.0 | 2553.2 | 2742.1 | 2963.4 |
| 50° | 1439.9 | 1504.4 | 1530.1 | 1571.5 | 1630.9 | 1694.2 | 1771.9 | 1849.5 | 1947.2 | 2046.3 | 2160.2 |
| 52.5° | 1275.9 | 1297.0 | 1325.0 | 1351.2 | 1388.0 | 1460.1 | 1483.4 | 1524.0 | 1578.8 | 1632.4 | 1692.2 |
| 55° | 1150.8 | 1164.5 | 1182.7 | 1198.5 | 1220.8 | 1242.0 | 1272.8 | 1299.8 | 1336.4 | 1368.6 | 1408.3 |
| 57.5° | 1053.3 | 1062.0 | 1074.7 | 1085.1 | 1099.5 | 1111.5 | 1129.6 | 1144.1 | 1165.2 | 1183.5 | 1207.6 |
| 60° | 982.6 | 988.4 | 996.9 | 1003.7 | 1012.8 | 1019.1 | 1028.0 | 1034.9 | 1046.0 | 1055.2 | 1068.7 |
| 62.5° | 924.7 | 927.7 | 933.2 | 937.2 | 943.1 | 946.3 | 951.0 | 954.0 | 960.2 | 964.8 | 972.3 |
| 65° | 855.4 | 856.0 | 859.7 | 861.5 | 866.0 | 867.7 | 871.6 | 873.0 | 878.1 | 881.5 | 888.1 |
| 67.5° | 798.5 | 796.9 | 797.0 | 795.7 | 796.3 | 794.9 | 795.3 | 793.9 | 795.9 | 797.0 | 802.0 |
| 70° | 746.6 | 744.4 | 743.6 | 741.3 | 740.6 | 738.1 | 737.4 | 735.2 | 734.9 | 734.2 | 736.0 |
| 72.5° | 696.1 | 695.4 | 695.6 | 693.9 | 693.7 | 692.1 | 692.2 | 691.1 | 692.3 | 692.8 | 695.1 |
| 75° | 637.9 | 638.1 | 639.1 | 637.7 | 638.1 | 636.7 | 637.2 | 635.9 | 636.6 | 636.3 | 638.6 |
| 77.5° | 567.1 | 568.7 | 571.8 | 571.2 | 572.2 | 570.6 | 571.3 | 569.4 | 570.0 | 568.7 | 569.6 |
| 80° | 487.4 | 491.0 | 495.1 | 494.9 | 496.7 | 495.6 | 497.1 | 495.4 | 496.1 | 493.9 | 493.4 |
| 82.5° | 392.9 | 395.9 | 400.3 | 400.5 | 404.4 | 405.0 | 409.4 | 409.2 | 411.9 | 410.2 | 408.9 |
| 85° | 268.6 | 270.6 | 274.5 | 276.6 | 280.6 | 283.0 | 287.2 | 288.9 | 285.9 | 291.4 | 287.0 |
| 87.5° | 140.3 | 145.5 | 142.6 | 149.4 | 147.7 | 154.6 | 153.2 | 159.5 | 158.2 | 163.8 | 163.0 |
| 90° | 80.2 | 82.4 | 88.3 | 90.6 | 97.4 | 100.3 | 101.2 | 97.7 | 98.4 | 95.1 | 95.9 |
| 92.5° | 86.5 | 92.8 | 98.9 | 105.0 | 111.0 | 117.2 | 111.5 | 105.9 | 100.1 | 94.6 | 88.9 |
| 95° | 117.7 | 126.7 | 135.6 | 144.5 | 153.4 | 162.2 | 152.7 | 143.2 | 133.7 | 124.2 | 114.6 |
| 97.5° | 138.4 | 148.0 | 157.5 | 167.0 | 176.7 | 186.3 | 174.9 | 163.7 | 152.4 | 141.2 | 129.9 |
| 100° | 195.9 | 214.5 | 232.9 | 251.4 | 269.8 | 288.3 | 267.4 | 246.2 | 225.3 | 204.3 | 183.2 |
| 102.5° | 395.5 | 437.8 | 480.2 | 522.6 | 564.9 | 607.3 | 562.7 | 518.2 | 473.5 | 428.9 | 384.2 |
| 105° | 739.8 | 807.6 | 875.4 | 943.2 | 1011.0 | 1079.0 | 1006.6 | 934.2 | 861.8 | 789.5 | 717.1 |
| 107.5° | 1091.1 | 1157.1 | 1223.4 | 1289.4 | 1355.6 | 1421.8 | 1348.4 | 1275.0 | 1201.7 | 1128.1 | 1054.7 |
| 110° | 1292.8 | 1332.5 | 1372.3 | 1411.9 | 1451.6 | 1491.5 | 1437.8 | 1384.2 | 1330.7 | 1277.0 | 1223.4 |



TEST NUMBER: P1444744
 CATALOG NUMBER: EHBR1-30-UNV-TA-L935-UPL40

CANDELA DISTRIBUTION (continued):

| | 302.5° | 305° | 307.5° | 310° | 312.5° | 315° | 317.5° | 320° | 322.5° | 325° | 327.5° |
|--------|--------|--------|--------|--------|--------|--------|--------|--------|--------|--------|--------|
| 112.5° | 1331.2 | 1351.2 | 1370.9 | 1390.9 | 1410.7 | 1430.6 | 1392.3 | 1354.1 | 1315.5 | 1277.2 | 1238.8 |
| 115° | 1248.9 | 1255.1 | 1261.4 | 1267.7 | 1273.8 | 1280.2 | 1254.3 | 1228.4 | 1202.5 | 1176.6 | 1150.6 |
| 117.5° | 1097.2 | 1096.1 | 1094.8 | 1093.7 | 1092.3 | 1091.1 | 1076.5 | 1062.0 | 1047.4 | 1032.8 | 1018.2 |
| 120° | 943.6 | 938.0 | 932.5 | 927.1 | 921.6 | 916.0 | 909.9 | 903.6 | 897.2 | 890.9 | 884.6 |
| 122.5° | 809.7 | 805.9 | 801.9 | 798.1 | 794.0 | 790.1 | 787.6 | 785.2 | 782.5 | 780.1 | 777.4 |
| 125° | 703.7 | 703.3 | 702.9 | 702.6 | 702.1 | 701.8 | 700.3 | 699.1 | 697.5 | 696.2 | 694.7 |
| 127.5° | 630.8 | 633.1 | 635.0 | 637.1 | 639.1 | 641.1 | 640.6 | 640.1 | 639.6 | 639.1 | 638.6 |
| 130° | 585.1 | 589.1 | 592.8 | 596.6 | 600.3 | 604.2 | 603.2 | 602.3 | 601.5 | 600.6 | 599.7 |
| 132.5° | 556.9 | 561.4 | 565.8 | 570.4 | 574.7 | 579.1 | 578.0 | 577.1 | 575.8 | 574.9 | 573.6 |
| 135° | 537.4 | 541.6 | 545.7 | 550.1 | 554.0 | 558.2 | 556.8 | 555.7 | 554.1 | 553.0 | 551.7 |
| 137.5° | 523.0 | 526.5 | 529.7 | 533.0 | 536.2 | 539.5 | 538.0 | 536.8 | 535.4 | 534.3 | 532.8 |
| 140° | 511.7 | 514.4 | 516.9 | 519.6 | 522.0 | 524.6 | 523.0 | 521.4 | 519.8 | 518.2 | 516.5 |
| 142.5° | 502.5 | 504.4 | 506.1 | 508.1 | 509.9 | 511.8 | 509.5 | 507.5 | 505.4 | 503.3 | 501.2 |
| 145° | 496.8 | 498.1 | 499.2 | 500.4 | 501.3 | 502.6 | 500.0 | 497.8 | 495.2 | 493.0 | 490.4 |
| 147.5° | 488.3 | 489.1 | 489.6 | 490.2 | 490.7 | 491.4 | 489.1 | 486.9 | 484.6 | 482.3 | 480.0 |
| 150° | 479.0 | 479.8 | 480.3 | 480.8 | 481.4 | 482.0 | 479.5 | 477.3 | 474.8 | 472.5 | 470.2 |
| 152.5° | 467.7 | 468.2 | 468.8 | 469.2 | 469.8 | 470.2 | 467.9 | 465.9 | 463.6 | 461.3 | 459.1 |
| 155° | 459.1 | 459.6 | 459.8 | 460.1 | 460.2 | 460.5 | 458.5 | 456.9 | 455.0 | 453.2 | 451.2 |
| 157.5° | 453.3 | 453.6 | 453.9 | 454.1 | 454.3 | 454.5 | 453.0 | 451.6 | 450.2 | 448.8 | 447.3 |
| 160° | 449.2 | 449.4 | 449.7 | 449.9 | 450.2 | 450.2 | 449.0 | 447.9 | 446.7 | 445.5 | 444.1 |
| 162.5° | 447.6 | 448.2 | 448.6 | 449.0 | 449.4 | 449.8 | 448.4 | 447.0 | 445.6 | 444.2 | 442.7 |
| 165° | 446.1 | 446.4 | 446.6 | 446.9 | 447.0 | 447.2 | 446.2 | 445.3 | 444.2 | 443.3 | 442.3 |
| 167.5° | 447.3 | 447.6 | 447.8 | 448.1 | 448.2 | 448.4 | 447.4 | 446.5 | 445.4 | 444.4 | 443.3 |
| 170° | 446.9 | 447.4 | 447.8 | 448.2 | 448.5 | 448.8 | 448.1 | 447.4 | 446.5 | 445.7 | 444.8 |
| 172.5° | 449.0 | 449.4 | 449.6 | 450.0 | 450.3 | 450.6 | 449.8 | 449.0 | 448.2 | 447.4 | 446.5 |
| 175° | 447.6 | 447.7 | 447.9 | 447.9 | 447.9 | 448.0 | 447.4 | 446.7 | 446.1 | 445.5 | 444.7 |
| 177.5° | 448.7 | 448.7 | 448.7 | 448.6 | 448.6 | 448.6 | 448.2 | 447.7 | 447.4 | 446.9 | 446.4 |
| 180° | 446.5 | 446.5 | 446.5 | 446.5 | 446.5 | 446.5 | 446.5 | 446.5 | 446.5 | 446.5 | 446.5 |



TEST NUMBER: P1444744
 CATALOG NUMBER: EHBR1-30-UNV-TA-L935-UPL40

CANDELA DISTRIBUTION (continued):

| | 330° | 332.5° | 335° | 337.5° | 340° | 342.5° | 345° | 347.5° | 350° | 352.5° | 355° |
|--------|---------|---------|---------|---------|---------|---------|---------|---------|---------|---------|---------|
| 0° | 23817.7 | 23817.7 | 23817.7 | 23817.7 | 23817.7 | 23817.7 | 23817.7 | 23817.7 | 23817.7 | 23817.7 | 23817.7 |
| 2.5° | 23967.3 | 23956.9 | 23950.2 | 23941.7 | 23936.4 | 23929.8 | 23924.9 | 23920.8 | 23917.5 | 23914.4 | 23912.0 |
| 5° | 24304.3 | 24250.7 | 24209.2 | 24164.2 | 24127.2 | 24090.3 | 24061.9 | 24038.3 | 24022.1 | 24009.8 | 24002.7 |
| 7.5° | 24733.4 | 24635.4 | 24548.1 | 24456.4 | 24374.1 | 24293.2 | 24223.4 | 24163.3 | 24118.1 | 24089.0 | 24071.2 |
| 10° | 25116.6 | 24985.3 | 24855.5 | 24718.9 | 24589.3 | 24463.5 | 24347.6 | 24245.6 | 24164.8 | 24111.2 | 24079.8 |
| 12.5° | 25288.4 | 25176.6 | 25044.0 | 24895.6 | 24736.8 | 24576.1 | 24419.5 | 24278.3 | 24159.7 | 24080.3 | 24034.3 |
| 15° | 25137.1 | 25091.2 | 25001.3 | 24886.1 | 24735.4 | 24569.2 | 24385.4 | 24212.6 | 24053.5 | 23950.5 | 23890.7 |
| 17.5° | 24645.0 | 24709.1 | 24702.2 | 24658.1 | 24549.8 | 24410.0 | 24222.6 | 24028.5 | 23829.7 | 23691.8 | 23616.6 |
| 20° | 23814.5 | 24016.0 | 24118.1 | 24170.6 | 24128.1 | 24037.4 | 23867.7 | 23670.8 | 23438.9 | 23259.0 | 23149.2 |
| 22.5° | 22647.5 | 23003.2 | 23224.8 | 23386.9 | 23421.4 | 23390.5 | 23240.6 | 23053.3 | 22794.9 | 22578.7 | 22416.5 |
| 25° | 21145.1 | 21666.2 | 22016.5 | 22291.1 | 22397.7 | 22425.2 | 22297.8 | 22111.4 | 21823.4 | 21571.4 | 21348.8 |
| 27.5° | 19375.5 | 20052.6 | 20520.3 | 20889.3 | 21055.7 | 21128.0 | 21010.7 | 20820.6 | 20479.8 | 20179.1 | 19888.1 |
| 30° | 17383.4 | 18186.6 | 18749.7 | 19192.2 | 19395.2 | 19490.5 | 19365.9 | 19153.7 | 18757.2 | 18395.3 | 18028.8 |
| 32.5° | 15251.1 | 16130.0 | 16743.6 | 17224.2 | 17425.3 | 17515.1 | 17352.0 | 17113.7 | 16655.3 | 16229.0 | 15801.6 |
| 35° | 13018.6 | 13905.8 | 14524.6 | 14992.2 | 15160.9 | 15215.0 | 15006.5 | 14730.9 | 14223.2 | 13755.3 | 13289.2 |
| 37.5° | 10740.6 | 11566.1 | 12128.5 | 12548.2 | 12652.5 | 12661.9 | 12410.6 | 12106.4 | 11572.7 | 11111.3 | 10647.4 |
| 40° | 8482.4 | 9178.6 | 9632.6 | 9968.5 | 10004.8 | 9972.4 | 9699.4 | 9393.1 | 8893.9 | 8480.5 | 8073.2 |
| 42.5° | 6355.3 | 6880.8 | 7204.7 | 7434.9 | 7421.2 | 7357.4 | 7107.0 | 6843.8 | 6431.9 | 6117.0 | 5796.5 |
| 45° | 4532.9 | 4879.4 | 5068.8 | 5203.5 | 5160.3 | 5099.5 | 4904.5 | 4720.1 | 4440.1 | 4236.7 | 4021.4 |
| 47.5° | 3149.0 | 3562.8 | 3490.8 | 3754.2 | 3527.3 | 3677.2 | 3365.0 | 3192.9 | 3044.4 | 2936.3 | 2814.6 |
| 50° | 2254.4 | 2349.3 | 2395.1 | 2426.3 | 2409.7 | 2386.6 | 2330.6 | 2280.5 | 2212.6 | 2163.1 | 2105.5 |
| 52.5° | 1741.1 | 1788.5 | 1814.4 | 1833.2 | 1829.5 | 1821.1 | 1796.7 | 1774.3 | 1742.6 | 1721.7 | 1696.4 |
| 55° | 1474.8 | 1475.4 | 1523.2 | 1502.7 | 1533.0 | 1497.5 | 1511.5 | 1472.2 | 1478.6 | 1444.8 | 1422.1 |
| 57.5° | 1225.4 | 1244.9 | 1253.6 | 1262.1 | 1259.7 | 1258.3 | 1248.7 | 1244.0 | 1233.3 | 1230.1 | 1222.5 |
| 60° | 1078.0 | 1088.1 | 1090.2 | 1094.1 | 1090.9 | 1089.6 | 1082.2 | 1079.5 | 1072.4 | 1071.1 | 1066.0 |
| 62.5° | 976.8 | 982.0 | 982.0 | 982.0 | 977.7 | 973.8 | 965.5 | 961.2 | 955.1 | 953.7 | 950.8 |
| 65° | 892.5 | 897.8 | 898.7 | 899.8 | 896.7 | 893.5 | 886.3 | 881.7 | 875.4 | 873.0 | 869.6 |
| 67.5° | 805.3 | 811.1 | 813.0 | 815.9 | 814.2 | 813.5 | 808.5 | 806.7 | 802.6 | 801.6 | 798.5 |
| 70° | 736.8 | 739.3 | 739.1 | 739.0 | 735.1 | 731.7 | 726.0 | 723.3 | 718.9 | 718.0 | 715.2 |
| 72.5° | 696.2 | 697.9 | 696.8 | 695.3 | 690.3 | 685.2 | 678.5 | 673.5 | 667.9 | 664.3 | 660.4 |
| 75° | 638.9 | 641.1 | 639.7 | 638.7 | 634.2 | 630.9 | 625.5 | 622.7 | 618.8 | 617.7 | 614.9 |
| 77.5° | 568.5 | 569.6 | 567.4 | 567.1 | 563.6 | 561.5 | 557.4 | 556.8 | 553.9 | 553.9 | 551.2 |
| 80° | 490.2 | 489.6 | 486.0 | 485.2 | 481.8 | 480.9 | 477.7 | 477.9 | 475.6 | 476.5 | 474.7 |
| 82.5° | 403.4 | 401.2 | 396.3 | 394.9 | 391.0 | 390.6 | 388.5 | 390.3 | 388.8 | 391.0 | 389.7 |
| 85° | 289.1 | 289.7 | 287.6 | 287.6 | 286.4 | 286.8 | 286.6 | 287.9 | 288.1 | 290.0 | 289.9 |
| 87.5° | 161.1 | 163.5 | 163.0 | 165.1 | 165.0 | 167.5 | 168.2 | 171.7 | 172.2 | 175.5 | 175.5 |
| 90° | 92.5 | 93.5 | 90.1 | 91.3 | 89.7 | 92.3 | 91.3 | 93.7 | 92.4 | 94.3 | 92.2 |
| 92.5° | 83.3 | 77.6 | 72.1 | 66.3 | 63.5 | 60.5 | 58.0 | 54.8 | 52.2 | 49.2 | 46.3 |
| 95° | 105.0 | 95.5 | 85.9 | 76.4 | 73.1 | 69.8 | 66.5 | 63.3 | 60.1 | 56.8 | 53.6 |
| 97.5° | 118.6 | 107.3 | 96.1 | 84.7 | 81.9 | 79.1 | 76.2 | 73.4 | 70.5 | 67.7 | 64.9 |
| 100° | 162.1 | 141.1 | 120.1 | 99.0 | 96.6 | 94.2 | 91.8 | 89.5 | 87.0 | 84.6 | 82.2 |
| 102.5° | 339.6 | 294.8 | 250.1 | 205.5 | 197.0 | 188.5 | 180.1 | 171.6 | 163.0 | 154.6 | 146.2 |
| 105° | 644.7 | 572.2 | 499.8 | 427.3 | 404.3 | 381.3 | 358.4 | 335.3 | 312.2 | 289.2 | 266.3 |
| 107.5° | 981.2 | 907.6 | 834.2 | 760.6 | 718.2 | 675.7 | 633.1 | 590.5 | 548.1 | 505.5 | 462.9 |
| 110° | 1169.7 | 1116.1 | 1062.3 | 1008.5 | 974.4 | 940.1 | 905.8 | 871.5 | 837.4 | 803.0 | 768.7 |



TEST NUMBER: P1444744
 CATALOG NUMBER: EHBR1-30-UNV-TA-L935-UPL40

CANDELA DISTRIBUTION (continued):

| | 330° | 332.5° | 335° | 337.5° | 340° | 342.5° | 345° | 347.5° | 350° | 352.5° | 355° |
|--------|--------|--------|--------|--------|--------|--------|--------|--------|--------|--------|--------|
| 112.5° | 1200.3 | 1161.8 | 1123.4 | 1084.8 | 1069.4 | 1053.7 | 1038.3 | 1022.7 | 1007.1 | 991.4 | 975.9 |
| 115° | 1124.6 | 1098.6 | 1072.5 | 1046.4 | 1040.9 | 1035.3 | 1029.9 | 1024.2 | 1018.7 | 1013.1 | 1007.5 |
| 117.5° | 1003.6 | 988.8 | 974.1 | 959.4 | 960.3 | 961.1 | 962.0 | 962.7 | 963.4 | 964.1 | 964.9 |
| 120° | 878.2 | 871.8 | 865.5 | 859.1 | 863.8 | 868.4 | 873.0 | 877.4 | 881.9 | 886.2 | 890.6 |
| 122.5° | 774.9 | 772.2 | 769.7 | 766.9 | 772.6 | 778.1 | 783.6 | 789.1 | 794.5 | 799.7 | 805.0 |
| 125° | 693.4 | 691.9 | 690.5 | 688.9 | 694.5 | 700.1 | 705.7 | 711.1 | 716.5 | 721.8 | 727.1 |
| 127.5° | 638.1 | 637.6 | 637.1 | 636.4 | 640.5 | 644.3 | 648.2 | 651.8 | 655.7 | 659.2 | 662.7 |
| 130° | 598.7 | 597.8 | 597.0 | 596.0 | 599.6 | 603.1 | 606.7 | 609.8 | 613.2 | 616.2 | 619.4 |
| 132.5° | 572.6 | 571.4 | 570.4 | 569.3 | 571.8 | 574.2 | 576.7 | 578.8 | 581.1 | 583.0 | 585.1 |
| 135° | 550.5 | 549.1 | 547.8 | 546.3 | 548.7 | 551.0 | 553.2 | 555.2 | 557.3 | 559.0 | 560.9 |
| 137.5° | 531.6 | 530.1 | 528.8 | 527.4 | 529.6 | 531.6 | 533.5 | 535.2 | 537.0 | 538.7 | 540.2 |
| 140° | 515.1 | 513.3 | 511.9 | 510.2 | 512.0 | 513.7 | 515.4 | 517.0 | 518.7 | 520.0 | 521.3 |
| 142.5° | 499.1 | 496.8 | 495.0 | 492.8 | 494.0 | 495.2 | 496.5 | 497.6 | 498.8 | 499.7 | 500.6 |
| 145° | 488.1 | 485.5 | 483.3 | 480.7 | 481.7 | 482.6 | 483.7 | 484.6 | 485.3 | 486.0 | 486.8 |
| 147.5° | 477.8 | 475.4 | 473.0 | 470.7 | 471.6 | 472.2 | 472.7 | 473.3 | 474.0 | 474.5 | 474.8 |
| 150° | 467.8 | 465.2 | 462.8 | 460.3 | 461.0 | 461.5 | 462.0 | 462.6 | 463.1 | 463.5 | 463.9 |
| 152.5° | 456.8 | 454.5 | 452.2 | 449.8 | 450.3 | 450.7 | 451.1 | 451.5 | 452.0 | 452.3 | 452.6 |
| 155° | 449.3 | 447.3 | 445.4 | 443.4 | 443.8 | 444.3 | 444.6 | 444.9 | 445.2 | 445.5 | 445.6 |
| 157.5° | 445.7 | 444.1 | 442.7 | 441.0 | 441.1 | 441.3 | 441.5 | 441.4 | 441.5 | 441.5 | 441.4 |
| 160° | 442.9 | 441.6 | 440.2 | 438.8 | 438.8 | 438.9 | 439.1 | 438.9 | 439.0 | 438.8 | 438.8 |
| 162.5° | 441.1 | 439.7 | 438.0 | 436.4 | 436.4 | 436.6 | 436.6 | 436.6 | 436.6 | 436.5 | 436.4 |
| 165° | 441.3 | 440.1 | 439.0 | 437.8 | 437.7 | 437.5 | 437.4 | 437.1 | 436.9 | 436.6 | 436.3 |
| 167.5° | 442.2 | 441.1 | 439.9 | 438.8 | 438.8 | 439.0 | 439.0 | 439.0 | 439.0 | 438.9 | 438.9 |
| 170° | 444.0 | 443.0 | 442.2 | 441.2 | 441.0 | 440.9 | 440.7 | 440.6 | 440.3 | 440.1 | 439.8 |
| 172.5° | 445.6 | 444.6 | 443.7 | 442.7 | 442.7 | 442.6 | 442.4 | 442.3 | 442.1 | 441.9 | 441.8 |
| 175° | 444.0 | 443.4 | 442.6 | 441.9 | 441.8 | 441.7 | 441.7 | 441.6 | 441.4 | 441.3 | 441.1 |
| 177.5° | 445.9 | 445.6 | 444.9 | 444.5 | 444.4 | 444.4 | 444.3 | 444.2 | 444.2 | 444.1 | 444.0 |
| 180° | 446.5 | 446.5 | 446.5 | 446.5 | 446.5 | 446.5 | 446.5 | 446.5 | 446.5 | 446.5 | 446.5 |



TEST NUMBER: P1444744
CATALOG NUMBER: EHBR1-30-UNV-TA-L935-UPL40

CANDELA DISTRIBUTION (continued):

| | 357.5° | 360° |
|--------|---------|---------|
| 0° | 23817.7 | 23817.7 |
| 2.5° | 23910.0 | 23908.7 |
| 5° | 23998.9 | 23997.4 |
| 7.5° | 24066.5 | 24066.0 |
| 10° | 24074.4 | 24078.5 |
| 12.5° | 24026.4 | 24029.8 |
| 15° | 23886.1 | 23892.6 |
| 17.5° | 23617.9 | 23626.5 |
| 20° | 23155.9 | 23164.9 |
| 22.5° | 22407.7 | 22411.4 |
| 25° | 21319.9 | 21304.5 |
| 27.5° | 19837.0 | 19810.5 |
| 30° | 17951.8 | 17926.1 |
| 32.5° | 15704.1 | 15688.1 |
| 35° | 13174.0 | 13163.9 |
| 37.5° | 10510.2 | 10489.7 |
| 40° | 7924.3 | 7864.1 |
| 42.5° | 5656.1 | 5550.5 |
| 45° | 3908.9 | 3783.7 |
| 47.5° | 2728.8 | 2651.4 |
| 50° | 2068.3 | 2043.4 |
| 52.5° | 1685.3 | 1679.5 |
| 55° | 1422.0 | 1419.5 |
| 57.5° | 1224.2 | 1223.3 |
| 60° | 1068.7 | 1068.5 |
| 62.5° | 952.8 | 953.3 |
| 65° | 871.2 | 871.3 |
| 67.5° | 799.3 | 798.7 |
| 70° | 716.3 | 715.6 |
| 72.5° | 659.0 | 658.1 |
| 75° | 614.9 | 614.3 |
| 77.5° | 552.0 | 551.0 |
| 80° | 475.9 | 474.7 |
| 82.5° | 391.4 | 390.1 |
| 85° | 292.0 | 292.1 |
| 87.5° | 178.6 | 178.5 |
| 90° | 94.0 | 91.4 |
| 92.5° | 43.7 | 41.1 |
| 95° | 50.3 | 47.0 |
| 97.5° | 62.1 | 59.3 |
| 100° | 79.8 | 77.4 |
| 102.5° | 137.7 | 129.2 |
| 105° | 243.3 | 220.2 |
| 107.5° | 420.4 | 377.8 |
| 110° | 734.4 | 700.1 |



TEST NUMBER: P1444744
CATALOG NUMBER: EHBR1-30-UNV-TA-L935-UPL40

CANDELA DISTRIBUTION (continued):

| | 357.5° | 360° |
|--------|--------|-------|
| 112.5° | 960.2 | 944.6 |
| 115° | 1001.6 | 996.0 |
| 117.5° | 965.4 | 966.0 |
| 120° | 894.8 | 899.2 |
| 122.5° | 810.0 | 815.2 |
| 125° | 732.1 | 737.2 |
| 127.5° | 666.1 | 669.3 |
| 130° | 622.0 | 625.0 |
| 132.5° | 586.8 | 588.6 |
| 135° | 562.4 | 563.9 |
| 137.5° | 541.4 | 542.8 |
| 140° | 522.4 | 523.5 |
| 142.5° | 501.3 | 502.0 |
| 145° | 487.3 | 487.8 |
| 147.5° | 474.9 | 475.3 |
| 150° | 464.0 | 464.3 |
| 152.5° | 452.7 | 453.0 |
| 155° | 445.7 | 445.9 |
| 157.5° | 441.2 | 441.1 |
| 160° | 438.6 | 438.5 |
| 162.5° | 436.2 | 436.1 |
| 165° | 435.9 | 435.5 |
| 167.5° | 438.8 | 438.8 |
| 170° | 439.6 | 439.4 |
| 172.5° | 441.6 | 441.4 |
| 175° | 441.0 | 440.9 |
| 177.5° | 444.0 | 443.8 |
| 180° | 446.5 | 446.5 |

Cooper Lighting Solutions Photometric Lab
1121 Highway 74 South
Peachtree City, GA 30269



LM-79-2019: Approved Method: Electrical and Photometric Measurements of Solid-State Lighting Products

Report Prepared for

Cooper Lighting Solutions

Metalux

Report Number: SP1-2506-472-6

Test Date: 08/01/2025

Luminaire Tested: EHBR-60-L935-N

Data in this report applies to families of products including EHBR-60-L935-N

Test Information

Test Method: LM-79-2019
 Report Number: SP1-2506-472-6
 Test Lab: COOPER LIGHTING SOLUTIONS
 Photometer: SP1 - 76IN SPHERE
 Measurement Geometry: 4π
 Issue Date: 08/05/2025
 Manufacturer: COOPER LIGHTING SOLUTIONS
 Product Line: Metalux
 Catalog Number: **EHBR-60-L935-N**
 Description: Elevate Round Highbay at, 60000 lumens, 3500K 90CRI LEDs with N lens

Spectral Parameters

CCT (K): 3406
 CIE u': 0.2394
 CIE v': 0.5094
 Duv: -0.0028
 CIE x: 0.4076
 CIE y: 0.3856
 CIE z: 0.2068
 Peak Wavelength (nm): 630
 Dominant Wavelength (nm): 582
 Purity: 38.0517
 Rf: 91.3
 Rg: 100

| | | | |
|-----------|------|------|------|
| CRI (Ra): | 94.6 | | |
| R1: | 96.6 | R9: | 63.8 |
| R2: | 98.4 | R10: | 94.7 |
| R3: | 98.1 | R11: | 96.6 |
| R4: | 95.8 | R12: | 80.9 |
| R5: | 96.2 | R13: | 97.4 |
| R6: | 95.4 | R14: | 98.3 |
| R7: | 91.8 | R15: | 93.1 |
| R8: | 84.4 | | |



Test Conditions

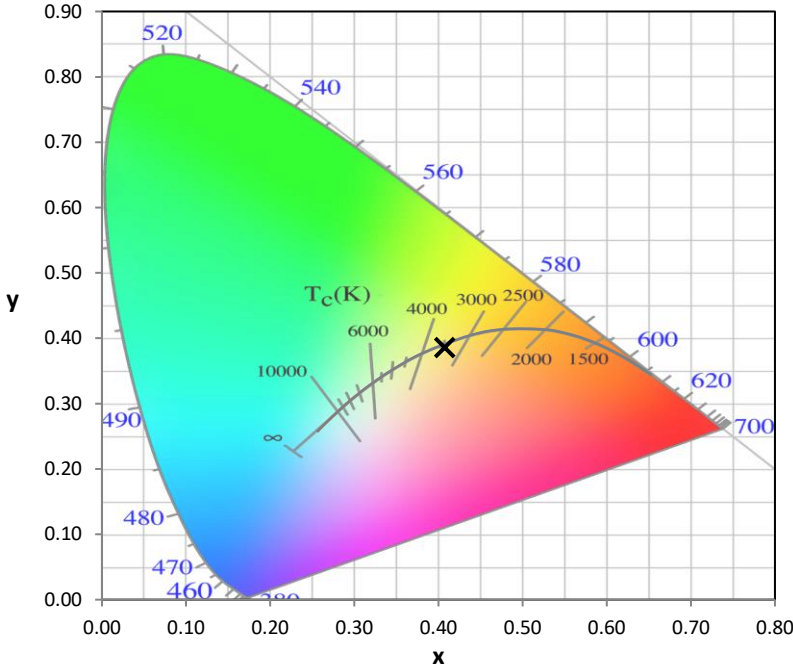
Stabilization Time: 35M
 Operation Time: 1H 35M
 Sphere Temperature (°C): 25.0

REPORT NUMBER: SP1-2506-472-6

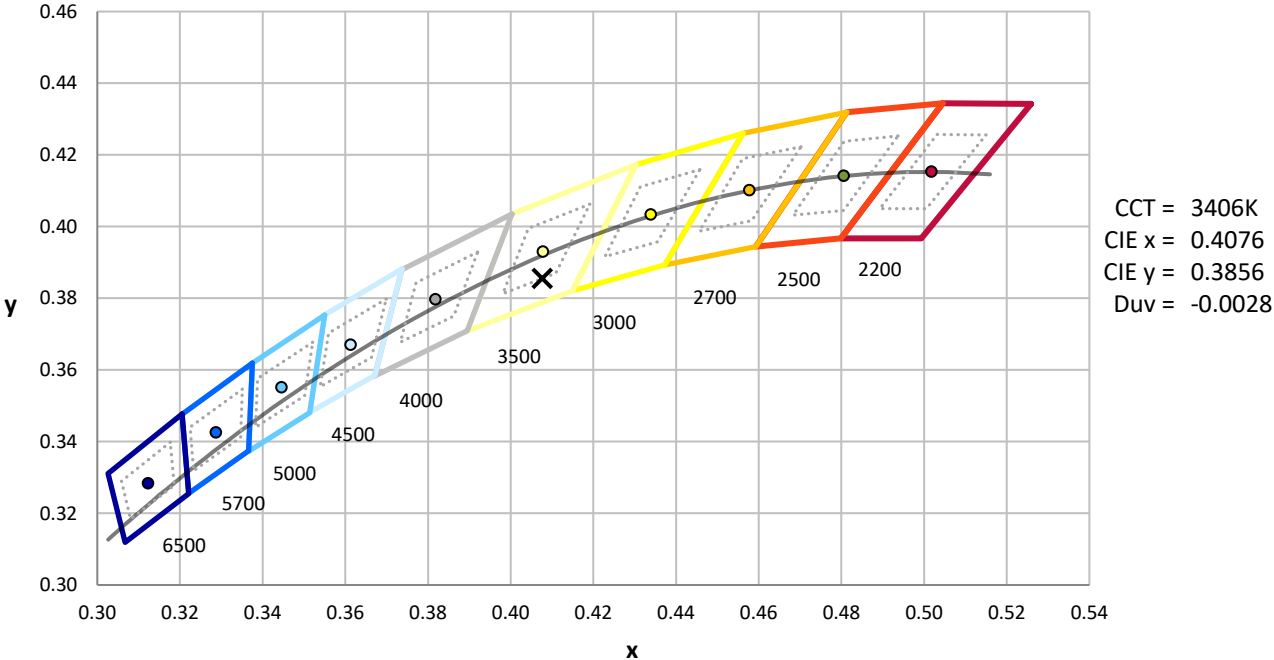
| Measurement and Test Equipment | | | |
|--------------------------------|-----------------------|------------------|----------------------|
| Instrument | Identification Number | Calibration Date | Calibration Due Date |
| Photometer | 76INCH SPHERE IN0058 | 6/16/2025 | 12/16/2025 |
| Power Meter | XITRON INXT2011004 | 1/21/2025 | 1/21/2026 |
| AC Power Source | CHROMA 61603 IN0063 | 10/22/2024 | 10/22/2025 |
| DC Power Source | AGILENT E3634A IN0208 | 10/22/2024 | 10/22/2025 |
| Sphere Thermometer | ONSET IN0085 | 10/22/2024 | 10/22/2025 |
| Room Thermometer | ONSET IN0046 | 10/22/2024 | 10/22/2025 |

REPORT NUMBER: SP1-2506-472-6

CIE 1931 Chromaticity Diagram



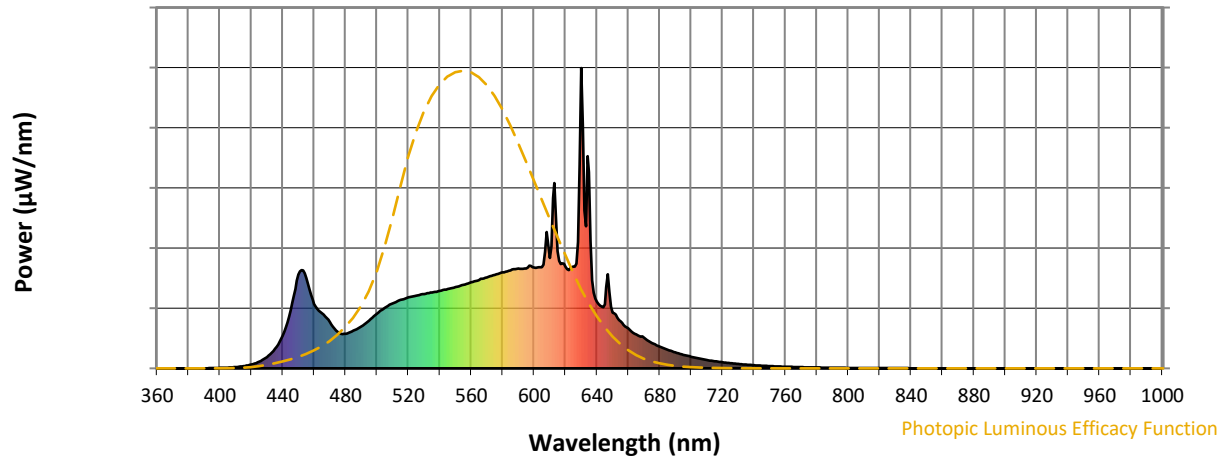
CIE 1931 Chromaticity Diagram with 2017 ANSI 7-Step and 4-Step Quadrangles



Point lies inside the ANSI 3500K 4-step quadrangle

REPORT NUMBER: SP1-2506-472-6

Photopic Flux vs. Wavelength



Photopic Lumens: NR

| λ (nm) | Power W [^] /nm | Lumens (φ/nm) | λ (nm) | Power W [^] /nm | Lumens (φ/nm) | λ (nm) | Power W [^] /nm | Lumens (φ/nm) | λ (nm) | Power W [^] /nm | Lumens (φ/nm) | λ (nm) | Power W [^] /nm | Lumens (φ/nm) |
|--------|--------------------------|---------------|--------|--------------------------|---------------|--------|--------------------------|---------------|--------|--------------------------|---------------|--------|--------------------------|---------------|
| 360 | 0 | NR | 490 | 140 | NR | 620 | 338 | NR | 750 | 8 | NR | 880 | 0 | NR |
| 365 | 0 | NR | 495 | 159 | NR | 625 | 339 | NR | 755 | 7 | NR | 885 | 0 | NR |
| 370 | 0 | NR | 500 | 182 | NR | 630 | 1000 | NR | 760 | 5 | NR | 890 | 0 | NR |
| 375 | 0 | NR | 505 | 202 | NR | 635 | 653 | NR | 765 | 5 | NR | 895 | 0 | NR |
| 380 | 0 | NR | 510 | 216 | NR | 640 | 222 | NR | 770 | 4 | NR | 900 | 0 | NR |
| 385 | 0 | NR | 515 | 228 | NR | 645 | 214 | NR | 775 | 3 | NR | 905 | 0 | NR |
| 390 | 0 | NR | 520 | 236 | NR | 650 | 185 | NR | 780 | 3 | NR | 910 | 0 | NR |
| 395 | 1 | NR | 525 | 242 | NR | 655 | 157 | NR | 785 | 3 | NR | 915 | 0 | NR |
| 400 | 2 | NR | 530 | 248 | NR | 660 | 133 | NR | 790 | 2 | NR | 920 | 0 | NR |
| 405 | 3 | NR | 535 | 253 | NR | 665 | 113 | NR | 795 | 2 | NR | 925 | 0 | NR |
| 410 | 4 | NR | 540 | 258 | NR | 670 | 103 | NR | 800 | 2 | NR | 930 | 0 | NR |
| 415 | 7 | NR | 545 | 264 | NR | 675 | 85 | NR | 805 | 1 | NR | 935 | 0 | NR |
| 420 | 13 | NR | 550 | 270 | NR | 680 | 72 | NR | 810 | 1 | NR | 940 | 0 | NR |
| 425 | 22 | NR | 555 | 278 | NR | 685 | 62 | NR | 815 | 1 | NR | 945 | 0 | NR |
| 430 | 38 | NR | 560 | 286 | NR | 690 | 53 | NR | 820 | 1 | NR | 950 | 0 | NR |
| 435 | 65 | NR | 565 | 295 | NR | 695 | 45 | NR | 825 | 1 | NR | 955 | 0 | NR |
| 440 | 108 | NR | 570 | 303 | NR | 700 | 39 | NR | 830 | 1 | NR | 960 | 0 | NR |
| 445 | 193 | NR | 575 | 311 | NR | 705 | 33 | NR | 835 | 1 | NR | 965 | 0 | NR |
| 450 | 312 | NR | 580 | 319 | NR | 710 | 28 | NR | 840 | 1 | NR | 970 | 0 | NR |
| 455 | 300 | NR | 585 | 326 | NR | 715 | 24 | NR | 845 | 0 | NR | 975 | 0 | NR |
| 460 | 214 | NR | 590 | 332 | NR | 720 | 20 | NR | 850 | 0 | NR | 980 | 0 | NR |
| 465 | 184 | NR | 595 | 333 | NR | 725 | 17 | NR | 855 | 0 | NR | 985 | 0 | NR |
| 470 | 153 | NR | 600 | 336 | NR | 730 | 15 | NR | 860 | 0 | NR | 990 | 0 | NR |
| 475 | 122 | NR | 605 | 337 | NR | 735 | 12 | NR | 865 | 0 | NR | 995 | 0 | NR |
| 480 | 115 | NR | 610 | 367 | NR | 740 | 10 | NR | 870 | 0 | NR | 1000 | 0 | NR |
| 485 | 125 | NR | 615 | 390 | NR | 745 | 9 | NR | 875 | 0 | NR | | | |

REPORT NUMBER: SP1-2506-472-6

Scotopic Flux vs. Wavelength



Scotopic Lumens: NR

S/P: 1.62

| λ (nm) | Power W [^] /nm | Lumens (φ/nm) | λ (nm) | Power W [^] /nm | Lumens (φ/nm) | λ (nm) | Power W [^] /nm | Lumens (φ/nm) | λ (nm) | Power W [^] /nm | Lumens (φ/nm) | λ (nm) | Power W [^] /nm | Lumens (φ/nm) |
|--------|--------------------------|---------------|--------|--------------------------|---------------|--------|--------------------------|---------------|--------|--------------------------|---------------|--------|--------------------------|---------------|
| 360 | 0 | NR | 490 | 140 | NR | 620 | 338 | NR | 750 | 8 | NR | 880 | 0 | NR |
| 365 | 0 | NR | 495 | 159 | NR | 625 | 339 | NR | 755 | 7 | NR | 885 | 0 | NR |
| 370 | 0 | NR | 500 | 182 | NR | 630 | 1000 | NR | 760 | 5 | NR | 890 | 0 | NR |
| 375 | 0 | NR | 505 | 202 | NR | 635 | 653 | NR | 765 | 5 | NR | 895 | 0 | NR |
| 380 | 0 | NR | 510 | 216 | NR | 640 | 222 | NR | 770 | 4 | NR | 900 | 0 | NR |
| 385 | 0 | NR | 515 | 228 | NR | 645 | 214 | NR | 775 | 3 | NR | 905 | 0 | NR |
| 390 | 0 | NR | 520 | 236 | NR | 650 | 185 | NR | 780 | 3 | NR | 910 | 0 | NR |
| 395 | 1 | NR | 525 | 242 | NR | 655 | 157 | NR | 785 | 3 | NR | 915 | 0 | NR |
| 400 | 2 | NR | 530 | 248 | NR | 660 | 133 | NR | 790 | 2 | NR | 920 | 0 | NR |
| 405 | 3 | NR | 535 | 253 | NR | 665 | 113 | NR | 795 | 2 | NR | 925 | 0 | NR |
| 410 | 4 | NR | 540 | 258 | NR | 670 | 103 | NR | 800 | 2 | NR | 930 | 0 | NR |
| 415 | 7 | NR | 545 | 264 | NR | 675 | 85 | NR | 805 | 1 | NR | 935 | 0 | NR |
| 420 | 13 | NR | 550 | 270 | NR | 680 | 72 | NR | 810 | 1 | NR | 940 | 0 | NR |
| 425 | 22 | NR | 555 | 278 | NR | 685 | 62 | NR | 815 | 1 | NR | 945 | 0 | NR |
| 430 | 38 | NR | 560 | 286 | NR | 690 | 53 | NR | 820 | 1 | NR | 950 | 0 | NR |
| 435 | 65 | NR | 565 | 295 | NR | 695 | 45 | NR | 825 | 1 | NR | 955 | 0 | NR |
| 440 | 108 | NR | 570 | 303 | NR | 700 | 39 | NR | 830 | 1 | NR | 960 | 0 | NR |
| 445 | 193 | NR | 575 | 311 | NR | 705 | 33 | NR | 835 | 1 | NR | 965 | 0 | NR |
| 450 | 312 | NR | 580 | 319 | NR | 710 | 28 | NR | 840 | 1 | NR | 970 | 0 | NR |
| 455 | 300 | NR | 585 | 326 | NR | 715 | 24 | NR | 845 | 0 | NR | 975 | 0 | NR |
| 460 | 214 | NR | 590 | 332 | NR | 720 | 20 | NR | 850 | 0 | NR | 980 | 0 | NR |
| 465 | 184 | NR | 595 | 333 | NR | 725 | 17 | NR | 855 | 0 | NR | 985 | 0 | NR |
| 470 | 153 | NR | 600 | 336 | NR | 730 | 15 | NR | 860 | 0 | NR | 990 | 0 | NR |
| 475 | 122 | NR | 605 | 337 | NR | 735 | 12 | NR | 865 | 0 | NR | 995 | 0 | NR |
| 480 | 115 | NR | 610 | 367 | NR | 740 | 10 | NR | 870 | 0 | NR | 1000 | 0 | NR |
| 485 | 125 | NR | 615 | 390 | NR | 745 | 9 | NR | 875 | 0 | NR | | | |

REPORT NUMBER: SP1-2506-472-6

Melanopic Flux vs. Wavelength



Melanopic Lumens: NR M/P: 3.3

| λ (nm) | Power W [^] /nm | Lumens (φ/nm) | λ (nm) | Power W [^] /nm | Lumens (φ/nm) | λ (nm) | Power W [^] /nm | Lumens (φ/nm) | λ (nm) | Power W [^] /nm | Lumens (φ/nm) | λ (nm) | Power W [^] /nm | Lumens (φ/nm) |
|--------|--------------------------|---------------|--------|--------------------------|---------------|--------|--------------------------|---------------|--------|--------------------------|---------------|--------|--------------------------|---------------|
| 360 | 0 | NR | 490 | 140 | NR | 620 | 338 | NR | 750 | 8 | NR | 880 | 0 | NR |
| 365 | 0 | NR | 495 | 159 | NR | 625 | 339 | NR | 755 | 7 | NR | 885 | 0 | NR |
| 370 | 0 | NR | 500 | 182 | NR | 630 | 1000 | NR | 760 | 5 | NR | 890 | 0 | NR |
| 375 | 0 | NR | 505 | 202 | NR | 635 | 653 | NR | 765 | 5 | NR | 895 | 0 | NR |
| 380 | 0 | NR | 510 | 216 | NR | 640 | 222 | NR | 770 | 4 | NR | 900 | 0 | NR |
| 385 | 0 | NR | 515 | 228 | NR | 645 | 214 | NR | 775 | 3 | NR | 905 | 0 | NR |
| 390 | 0 | NR | 520 | 236 | NR | 650 | 185 | NR | 780 | 3 | NR | 910 | 0 | NR |
| 395 | 1 | NR | 525 | 242 | NR | 655 | 157 | NR | 785 | 3 | NR | 915 | 0 | NR |
| 400 | 2 | NR | 530 | 248 | NR | 660 | 133 | NR | 790 | 2 | NR | 920 | 0 | NR |
| 405 | 3 | NR | 535 | 253 | NR | 665 | 113 | NR | 795 | 2 | NR | 925 | 0 | NR |
| 410 | 4 | NR | 540 | 258 | NR | 670 | 103 | NR | 800 | 2 | NR | 930 | 0 | NR |
| 415 | 7 | NR | 545 | 264 | NR | 675 | 85 | NR | 805 | 1 | NR | 935 | 0 | NR |
| 420 | 13 | NR | 550 | 270 | NR | 680 | 72 | NR | 810 | 1 | NR | 940 | 0 | NR |
| 425 | 22 | NR | 555 | 278 | NR | 685 | 62 | NR | 815 | 1 | NR | 945 | 0 | NR |
| 430 | 38 | NR | 560 | 286 | NR | 690 | 53 | NR | 820 | 1 | NR | 950 | 0 | NR |
| 435 | 65 | NR | 565 | 295 | NR | 695 | 45 | NR | 825 | 1 | NR | 955 | 0 | NR |
| 440 | 108 | NR | 570 | 303 | NR | 700 | 39 | NR | 830 | 1 | NR | 960 | 0 | NR |
| 445 | 193 | NR | 575 | 311 | NR | 705 | 33 | NR | 835 | 1 | NR | 965 | 0 | NR |
| 450 | 312 | NR | 580 | 319 | NR | 710 | 28 | NR | 840 | 1 | NR | 970 | 0 | NR |
| 455 | 300 | NR | 585 | 326 | NR | 715 | 24 | NR | 845 | 0 | NR | 975 | 0 | NR |
| 460 | 214 | NR | 590 | 332 | NR | 720 | 20 | NR | 850 | 0 | NR | 980 | 0 | NR |
| 465 | 184 | NR | 595 | 333 | NR | 725 | 17 | NR | 855 | 0 | NR | 985 | 0 | NR |
| 470 | 153 | NR | 600 | 336 | NR | 730 | 15 | NR | 860 | 0 | NR | 990 | 0 | NR |
| 475 | 122 | NR | 605 | 337 | NR | 735 | 12 | NR | 865 | 0 | NR | 995 | 0 | NR |
| 480 | 115 | NR | 610 | 367 | NR | 740 | 10 | NR | 870 | 0 | NR | 1000 | 0 | NR |
| 485 | 125 | NR | 615 | 390 | NR | 745 | 9 | NR | 875 | 0 | NR | | | |

Summary

$R_f = 91.3$
 $R_g = 100$
 $CIE R_a = 94.6$
 $R_9 = 63.8$



Color Vector Graphics

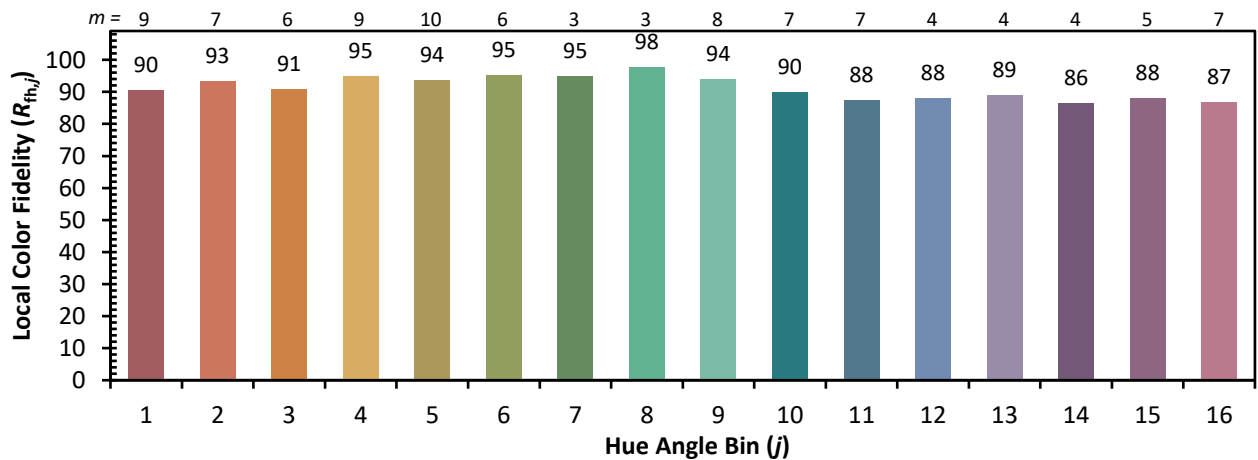
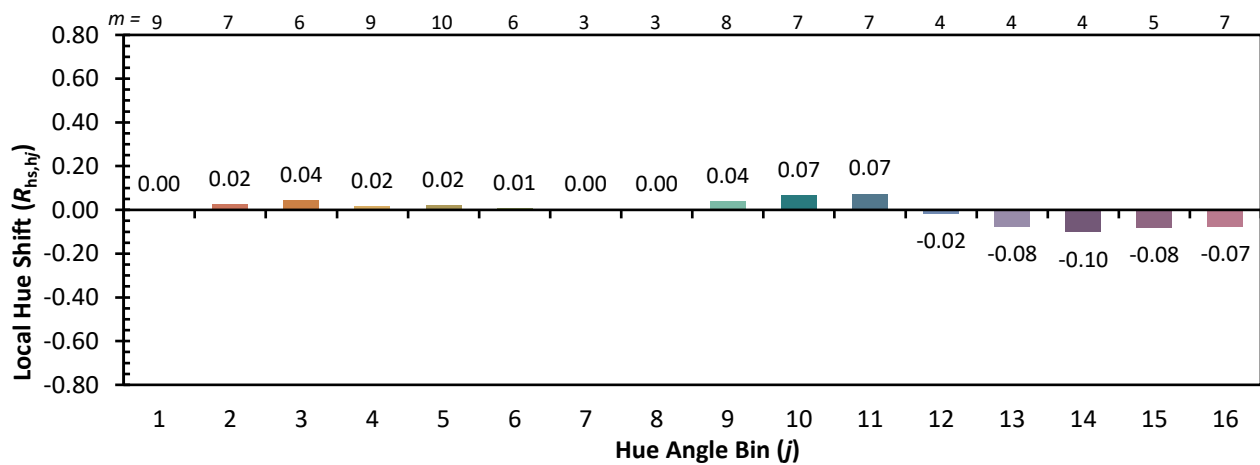
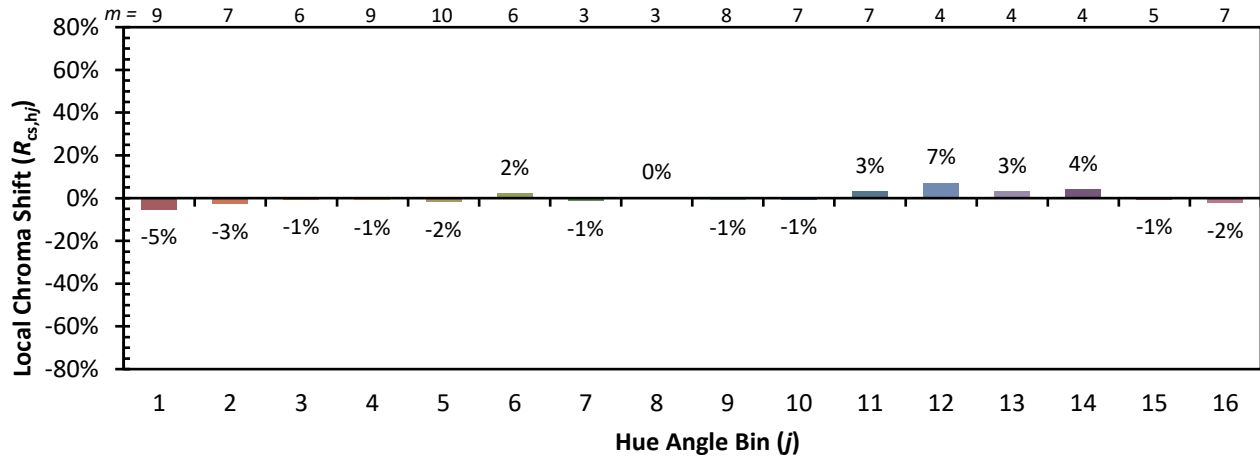


Individual Sample Fidelity Index ($R_{f,i}$)

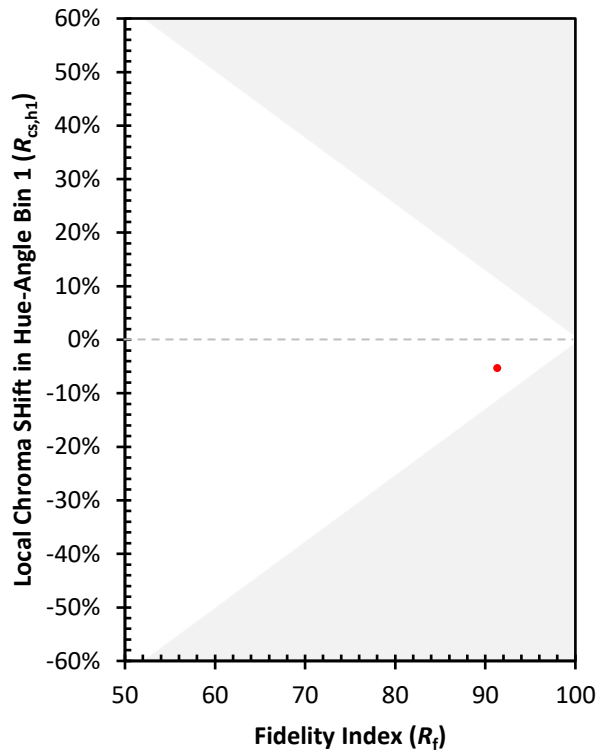
| | | | |
|------------|------------|------------|------------|
| CES01 = 86 | CES26 = 94 | CES51 = 97 | CES76 = 90 |
| CES02 = 63 | CES27 = 92 | CES52 = 98 | CES77 = 86 |
| CES03 = 31 | CES28 = 97 | CES53 = 98 | CES78 = 86 |
| CES04 = 70 | CES29 = 97 | CES54 = 93 | CES79 = 90 |
| CES05 = 50 | CES30 = 92 | CES55 = 92 | CES80 = 91 |
| CES06 = 51 | CES31 = 97 | CES56 = 96 | CES81 = 74 |
| CES07 = 43 | CES32 = 89 | CES57 = 94 | CES82 = 96 |
| CES08 = 41 | CES33 = 99 | CES58 = 95 | CES83 = 94 |
| CES09 = 29 | CES34 = 94 | CES59 = 98 | CES84 = 95 |
| CES10 = 75 | CES35 = 97 | CES60 = 92 | CES85 = 79 |
| CES11 = 58 | CES36 = 81 | CES61 = 93 | CES86 = 79 |
| CES12 = 64 | CES37 = 96 | CES62 = 86 | CES87 = 92 |
| CES13 = 44 | CES38 = 87 | CES63 = 94 | CES88 = 98 |
| CES14 = 74 | CES39 = 99 | CES64 = 91 | CES89 = 84 |
| CES15 = 72 | CES40 = 97 | CES65 = 90 | CES90 = 96 |
| CES16 = 48 | CES41 = 96 | CES66 = 89 | CES91 = 75 |
| CES17 = 49 | CES42 = 94 | CES67 = 88 | CES92 = 76 |
| CES18 = 56 | CES43 = 93 | CES68 = 89 | CES93 = 86 |
| CES19 = 71 | CES44 = 99 | CES69 = 90 | CES94 = 74 |
| CES20 = 67 | CES45 = 97 | CES70 = 88 | CES95 = 83 |
| CES21 = 86 | CES46 = 97 | CES71 = 83 | CES96 = 92 |
| CES22 = 78 | CES47 = 91 | CES72 = 94 | CES97 = 96 |
| CES23 = 91 | CES48 = 91 | CES73 = 83 | CES98 = 95 |
| CES24 = 90 | CES49 = 96 | CES74 = 90 | CES99 = 92 |
| CES25 = 71 | CES50 = 98 | CES75 = 85 | |



Color Rendition by Hue-Angle Bin



Measure Comparisons



(END OF REPORT)