

Cooper Lighting Solutions Photometric Lab
1121 Highway 74 South
Peachtree City, GA 30269



Scaled data based on original data using
LM-79-2019 Approved Method: Electrical and Photometric Measurements of Solid-
State Lighting Products

Test Report Prepared for
Cooper Lighting Solutions

Brand: METALUX

Report Number: P1444768

Luminaire Tested: EHBR1-48-UNV-TA-L935-UPL40

Issue Date: 5/1/2026

Test Information

Test Method: LM-79-2019
Report Number: P1444768
REPORT IS A COMBINATION OF REPORTS P1444360 AND P1431635
Test Lab: INNOVATION CENTER
Issue Date: 5/1/2026
Manufacturer: COOPER LIGHTING SOLUTIONS
Product Line: METALUX
Catalog Number: EHBR1-48-UNV-TA-L935-UPL40
Description: Elevate Round Highbay at, 48000 lumens, 3500K 90CRI LEDs with TA lens
Light Source: -
Ballast/Driver: -

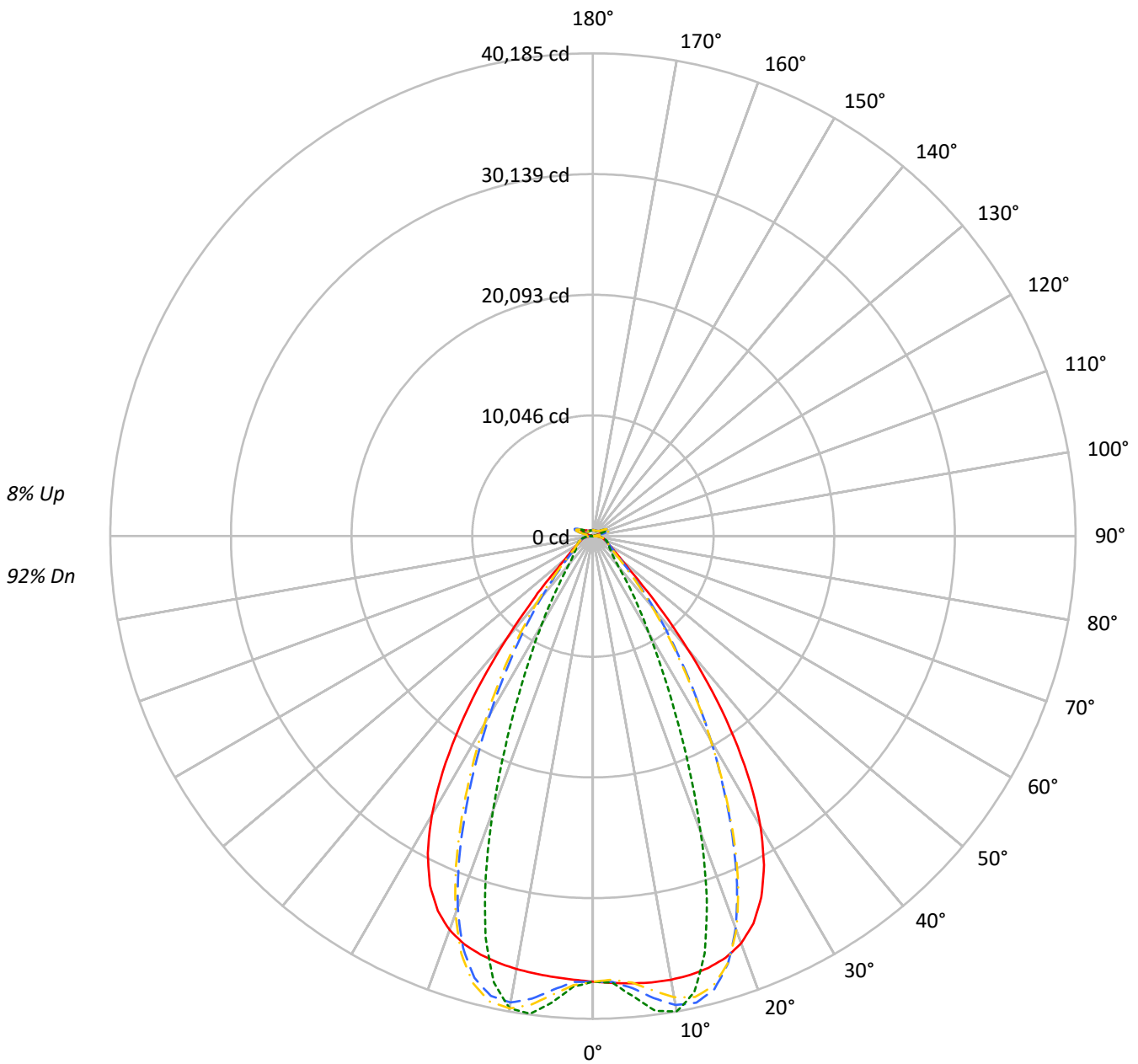
Summary

Lumens per Lamp: N/A
Luminaire Lumens: 46461.2 lumens
Efficiency: N/A
Efficacy: 160.7 lumens/watt
Spacing Criteria (0/90/45): 1.13 / 0.77 / 0.88
Luminous Opening: Vertical Cylinder (Dia: 1.71' x H: 0.1')
CIE Type: Direct

Input Watts (W): 289.2
Input Voltage (V): NR
Input Current (Ain): NR
Voltage Rise (V): NR
Power Factor: NR
Total Harmonic Distortion (THDi): NR
Frequency (hertz): 60
Stabilization Time: NR
Operation Time: NR
Ambient Temperature (°C): NR
Test Distance: 24 FT

TEST NUMBER: P1444768
CATALOG NUMBER: EHBR1-48-UNV-TA-L935-UPL40

Luminous Intensity Polar Plot



— 0°-180° - - 45°-225° - · - · 90°-270° - · - · 135°-315°



TEST NUMBER: P1444768
 CATALOG NUMBER: EHBR1-48-UNV-TA-L935-UPL40

COEFFICIENT OF UTILIZATION - ZONAL CAVITY METHOD:

RF	20				20				20				20				20				20
RC	80				70				50				30				10				0
RW	70	50	30	10	70	50	30	10	50	30	10	50	30	10	50	30	10	50	30	10	0
RCR																					
0	117	117	117	117	113	113	113	113	107	107	107	100	100	100	95	95	95	95	95	95	92
1	110	106	103	101	107	103	101	98	98	96	94	93	91	89	88	87	85	85	85	85	83
2	103	97	92	88	100	95	90	87	90	86	83	86	83	80	82	80	78	78	78	78	75
3	97	89	83	79	94	87	82	77	83	79	75	80	76	73	76	73	71	71	71	71	69
4	91	82	76	71	88	80	74	70	77	72	68	74	70	66	71	68	65	65	65	65	63
5	86	76	69	64	83	75	68	64	72	66	62	69	65	61	67	63	60	60	60	60	58
6	81	71	64	59	79	69	63	58	67	61	57	65	60	56	63	58	55	55	55	55	54
7	76	66	59	54	74	65	58	54	63	57	53	61	56	52	59	55	51	51	51	51	50
8	72	62	55	50	70	61	54	50	59	53	49	57	52	49	55	51	48	48	48	48	46
9	68	58	51	47	67	57	51	47	55	50	46	54	49	45	52	48	45	45	45	45	43
10	65	54	48	44	63	54	48	43	52	47	43	51	46	42	50	45	42	42	42	42	40

AVERAGE LUMINANCE (cd/sqm):

	0°	90°	180°	270°
0°	174196	174196	174196	174196
5°	175039	180143	172590	182503
10°	176501	189137	172268	187886
15°	177366	171451	171967	164548
20°	175533	127725	169788	118176
25°	166148	80779	160657	73292
30°	145143	48542	139522	44363
35°	111703	30460	105278	26982
40°	70662	19107	64650	17955
45°	36421	14885	35817	14641
50°	21353	13241	20699	13034
55°	16359	12526	15754	12414
60°	13842	12796	13252	12631
65°	13001	13363	12503	12908
70°	12702	13993	12069	13466
75°	13581	14840	12847	14183
80°	14053	16433	12742	15000
85°	13235	15857	10695	13576

MAXIMUM LUMINANCE 45°-90°:

Horizontal Angle: 25°
 Vertical Angle: 45°
 Luminance: 55737 cd/sqm



TEST NUMBER: P1444768
 CATALOG NUMBER: EHBR1-48-UNV-TA-L935-UPL40

ZONAL LUMENS:

Zone	Lumens	% Fixture
0°-10°	3655.7	7.9
10°-20°	10283.8	22.1
20°-30°	11712.4	25.2
30°-40°	8418.4	18.1
40°-50°	3882.5	8.4
50°-60°	1858.0	4.0
60°-70°	1355.7	2.9
70°-80°	1029.9	2.2
80°-90°	474.7	1.0
90°-100°	107.7	0.2
100°-110°	623.8	1.3
110°-120°	1152.5	2.5
120°-130°	703.9	1.5
130°-140°	450.9	1.0
140°-150°	333.2	0.7
150°-160°	231.4	0.5
160°-170°	139.2	0.3
170°-180°	47.6	0.1
0°-30°	25651.9	55.2
0°-40°	34070.3	73.3
0°-60°	39810.8	85.7
0°-90°	42671.0	91.8
90°-120°	1884.0	4.1
90°-150°	3372.0	7.3
90°-180°	3790.0	8.2
0°-180°	46461.2	100.0

CANDELA DISTRIBUTION:

	0°	90°	180°	270°	360°	Flux
0°	37094	37094	37094	37094	37094	
5°	37374	38463	36851	38967	37374	3571
15°	37210	35970	36078	34521	37210	10484
25°	33180	16132	32083	14636	33180	15041
35°	20502	5590	19322	4952	20502	12582
45°	5893	2408	5795	2369	5893	5012
55°	2211	1693	2129	1678	2211	2041
65°	1357	1395	1305	1347	1357	1355
75°	957	1045	905	999	957	995
85°	455	545	368	467	455	427
90°	128	161	41	49	128	79
95°	49	55	49	55	49	47
105°	224	290	150	290	224	297
115°	1005	1219	1052	1220	1005	928
125°	754	792	854	794	754	687
135°	591	525	636	529	591	461
145°	524	509	557	514	524	331
155°	488	490	520	494	488	227
165°	484	484	503	487	484	138
175°	495	500	504	501	495	47
180°	502	502	502	502	502	



TEST NUMBER: P1444768
 CATALOG NUMBER: EHBR1-48-UNV-TA-L935-UPL40

CANDELA DISTRIBUTION (FULL):

	0°	2.5°	5°	7.5°	10°	12.5°	15°	17.5°	20°	22.5°	25°
0°	37093.8	37093.8	37093.8	37093.8	37093.8	37093.8	37093.8	37093.8	37093.8	37093.8	37093.8
2.5°	37235.5	37232.5	37231.9	37229.4	37228.6	37228.6	37227.4	37224.4	37222.5	37218.2	37213.4
5°	37373.7	37372.0	37373.0	37373.3	37370.7	37364.9	37355.8	37344.7	37330.6	37317.5	37305.6
7.5°	37480.5	37483.1	37486.4	37485.7	37477.6	37464.0	37445.4	37435.0	37441.2	37461.4	37507.6
10°	37500.0	37516.0	37522.1	37520.2	37504.0	37492.3	37496.8	37536.2	37614.4	37718.7	37861.4
12.5°	37424.0	37443.5	37442.8	37436.4	37420.7	37436.6	37493.6	37610.6	37778.2	37984.1	38225.4
15°	37210.5	37235.8	37228.6	37220.2	37209.8	37262.2	37375.8	37579.0	37838.1	38128.3	38425.4
17.5°	36796.0	36826.5	36811.6	36802.2	36793.4	36891.6	37086.9	37384.4	37710.6	38038.9	38320.5
20°	36077.1	36097.5	36062.2	36045.5	36059.6	36251.9	36539.7	36919.6	37263.4	37573.9	37766.3
22.5°	34903.6	34929.1	34862.7	34855.0	34937.0	35232.4	35596.4	36021.2	36344.3	36590.3	36664.5
25°	33179.7	33204.8	33125.9	33173.0	33312.4	33714.8	34148.4	34602.7	34878.4	35060.7	35010.3
27.5°	30852.9	30875.7	30800.9	30897.1	31117.5	31646.2	32156.6	32649.4	32895.0	33022.7	32861.0
30°	27918.2	27965.6	27877.2	28011.6	28348.0	29034.3	29619.0	30171.7	30416.7	30513.8	30262.0
32.5°	24432.7	24500.2	24402.7	24602.6	25072.0	25896.5	26560.7	27178.2	27449.2	27560.1	27275.7
35°	20501.5	20598.2	20486.5	20786.5	21365.3	22283.6	23019.0	23708.5	24029.3	24186.7	23900.0
37.5°	16336.6	16428.8	16368.3	16768.5	17404.2	18356.0	19106.7	19850.4	20212.8	20448.9	20222.8
40°	12247.6	12332.0	12377.7	12835.4	13433.2	14330.3	15051.3	15787.3	16192.7	16488.9	16349.5
42.5°	8644.4	8729.5	8885.1	9326.7	9825.2	10567.8	11185.5	11846.2	12233.4	12549.5	12495.7
45°	5892.7	5991.6	6186.4	6548.0	6908.6	7441.3	7894.9	8408.7	8725.0	9014.6	9018.0
47.5°	4129.3	4198.8	4372.9	4619.8	4854.9	5218.8	5549.2	5801.7	6014.3	6230.7	6258.7
50°	3182.4	3224.2	3316.5	3454.2	3587.3	3760.5	3919.0	4102.0	4232.8	4351.5	4379.7
52.5°	2615.8	2642.2	2689.3	2763.8	2841.1	2935.2	3020.1	3120.5	3191.7	3255.3	3268.6
55°	2210.7	2232.7	2302.7	2316.8	2405.2	2422.3	2460.0	2521.1	2562.6	2600.6	2610.0
57.5°	1905.1	1921.1	1935.9	1967.6	1994.9	2034.4	2066.3	2110.2	2136.3	2163.9	2166.2
60°	1664.0	1675.5	1686.1	1708.2	1726.6	1754.2	1776.1	1806.0	1824.7	1845.3	1847.6
62.5°	1484.6	1492.8	1499.9	1514.4	1527.6	1548.8	1566.2	1591.2	1608.6	1624.5	1628.1
65°	1357.0	1363.0	1367.6	1378.6	1390.1	1408.2	1423.9	1444.3	1457.1	1469.3	1472.0
67.5°	1244.0	1249.7	1254.5	1264.5	1272.5	1285.9	1296.5	1311.8	1321.4	1331.1	1331.4
70°	1114.5	1119.9	1123.4	1132.8	1139.3	1150.8	1159.3	1173.1	1182.9	1193.8	1196.5
72.5°	1024.9	1028.0	1032.9	1041.4	1050.3	1062.7	1074.1	1088.4	1100.4	1111.6	1116.4
75°	956.7	960.4	963.5	970.9	977.0	987.4	996.0	1009.0	1019.5	1031.6	1037.5
77.5°	858.3	862.6	865.3	872.5	877.9	887.9	894.3	906.0	914.5	925.5	930.8
80°	739.3	743.3	745.3	752.2	756.4	765.6	771.7	783.1	790.2	801.2	807.6
82.5°	607.5	611.3	612.4	618.9	621.3	628.8	633.3	644.9	653.6	668.0	677.8
85°	454.9	456.2	458.5	456.8	466.0	466.6	477.0	479.0	492.7	496.3	512.0
87.5°	278.2	282.2	284.3	290.7	293.4	299.7	301.6	308.3	312.0	319.8	323.4
90°	128.3	135.4	138.2	146.6	149.2	156.5	158.9	167.1	169.9	178.4	182.7
92.5°	43.2	46.0	48.8	52.0	54.8	58.5	61.7	64.9	67.8	71.3	77.1
95°	49.3	52.6	55.8	59.1	62.4	65.5	68.8	72.1	75.3	78.6	87.9
97.5°	61.8	64.6	67.4	70.2	73.1	76.0	78.8	81.6	84.4	87.0	98.3
100°	80.3	82.7	85.1	87.5	89.8	92.3	94.6	97.0	99.4	101.8	122.7
102.5°	132.7	141.1	149.6	158.1	166.5	174.9	183.4	191.8	200.3	208.7	253.1
105°	224.3	247.2	270.4	293.1	316.1	339.1	362.2	384.8	407.8	430.8	503.3
107.5°	382.7	425.2	467.7	510.3	552.8	595.1	637.6	680.1	722.4	764.7	838.3
110°	706.1	740.1	774.4	808.5	842.6	876.9	911.0	944.9	979.2	1013.2	1066.9



TEST NUMBER: P1444768
 CATALOG NUMBER: EHBR1-48-UNV-TA-L935-UPL40

CANDELA DISTRIBUTION (continued):

	0°	2.5°	5°	7.5°	10°	12.5°	15°	17.5°	20°	22.5°	25°
112.5°	951.8	967.1	982.6	998.1	1013.5	1028.9	1044.3	1059.6	1075.2	1090.3	1128.7
115°	1004.7	1010.0	1015.6	1020.8	1026.3	1031.6	1036.9	1042.2	1047.6	1052.7	1078.7
117.5°	976.5	975.5	974.5	973.5	972.3	971.3	970.2	969.0	967.8	966.6	981.2
120°	911.7	906.8	902.2	897.1	892.4	887.4	882.6	877.6	872.5	867.4	873.7
122.5°	829.7	823.9	818.5	812.4	806.7	800.7	794.9	788.5	782.8	776.7	779.0
125°	754.1	748.3	742.7	736.8	730.6	724.6	718.5	712.5	706.4	700.0	701.2
127.5°	688.6	684.6	680.5	676.1	671.9	667.3	663.0	658.4	654.0	649.2	649.5
130°	646.8	643.2	639.5	635.5	631.7	627.5	623.4	619.1	615.1	610.7	611.1
132.5°	613.0	610.4	607.8	604.9	602.0	598.6	595.7	592.2	589.2	586.0	586.5
135°	590.8	588.3	586.0	583.2	580.5	577.4	574.4	571.3	568.4	565.1	566.0
137.5°	572.2	569.9	567.7	565.2	562.6	559.6	556.9	554.0	551.2	548.1	549.0
140°	555.1	553.2	551.0	548.6	546.4	543.8	541.2	538.5	535.8	533.0	534.1
142.5°	535.8	534.1	532.6	530.6	528.8	526.5	524.5	522.0	520.0	517.6	519.1
145°	523.5	522.1	520.9	519.1	517.4	515.4	513.6	511.4	509.7	507.6	509.3
147.5°	512.7	511.5	510.5	509.3	507.9	506.1	504.6	502.8	501.3	499.6	501.3
150°	503.3	502.3	501.3	500.1	498.7	497.1	495.6	494.1	492.5	490.9	492.5
152.5°	493.1	492.0	491.1	490.0	488.7	487.0	485.9	484.3	482.8	481.3	482.7
155°	487.6	486.5	485.3	484.3	483.0	481.6	480.2	478.9	477.5	476.0	477.2
157.5°	484.5	483.5	482.7	481.5	480.7	479.5	478.5	477.4	476.3	475.2	475.9
160°	483.7	482.8	481.9	480.9	479.9	478.6	477.7	476.6	475.8	474.6	475.3
162.5°	483.3	482.3	481.3	480.3	479.4	478.2	477.3	476.4	475.4	474.3	475.1
165°	484.4	483.9	483.3	482.5	481.8	481.2	480.4	479.6	479.0	478.1	478.6
167.5°	489.5	488.7	488.0	487.2	486.2	485.4	484.4	483.6	482.9	481.9	482.4
170°	491.7	491.0	490.6	490.1	489.6	489.1	488.6	488.1	487.5	487.0	487.5
172.5°	494.7	494.1	493.9	493.6	493.0	492.8	492.3	492.0	491.7	491.1	491.9
175°	495.1	494.7	494.6	494.3	494.0	493.8	493.6	493.3	493.3	493.0	493.3
177.5°	498.6	498.4	498.4	498.3	498.3	498.1	498.0	497.8	497.6	497.6	497.9
180°	501.5	501.5	501.5	501.5	501.5	501.5	501.5	501.5	501.5	501.5	501.5



TEST NUMBER: P1444768
 CATALOG NUMBER: EHBR1-48-UNV-TA-L935-UPL40

CANDELA DISTRIBUTION (continued):

	27.5°	30°	32.5°	35°	37.5°	40°	42.5°	45°	47.5°	50°	52.5°
0°	37093.8	37093.8	37093.8	37093.8	37093.8	37093.8	37093.8	37093.8	37093.8	37093.8	37093.8
2.5°	37209.8	37205.3	37199.1	37191.2	37184.5	37176.7	37158.1	37152.6	37158.8	37162.9	37171.5
5°	37298.2	37300.8	37301.8	37318.6	37333.2	37369.7	37655.1	37768.5	37856.2	37911.9	37996.4
7.5°	37564.8	37650.5	37735.4	37849.5	37947.9	38080.9	38580.2	38792.7	38943.8	39052.4	39186.0
10°	38016.5	38203.8	38379.3	38585.0	38761.8	38964.3	39429.0	39636.1	39766.8	39862.0	39950.8
12.5°	38471.6	38731.2	38965.9	39194.8	39386.2	39561.7	39725.1	39797.6	39803.8	39806.8	39759.7
15°	38708.6	38956.8	39163.6	39314.9	39427.4	39477.2	39195.7	39048.1	38861.6	38707.9	38455.0
17.5°	38559.0	38707.9	38797.2	38788.4	38741.9	38586.3	37789.3	37350.8	36915.6	36523.4	36009.1
20°	37894.0	37882.6	37804.9	37584.8	37319.6	36907.3	35540.7	34752.3	33990.1	33320.6	32508.3
22.5°	36656.8	36462.3	36190.8	35716.3	35189.0	34468.6	32510.3	31350.6	30289.3	29351.9	28301.8
25°	34864.4	34463.9	33963.3	33210.0	32390.7	31339.8	28926.2	27483.6	26209.6	25104.5	23892.8
27.5°	32570.3	31967.1	31233.6	30190.8	29080.8	27734.6	25058.6	23466.7	22098.9	20914.2	19624.6
30°	29854.4	29069.9	28122.7	26828.4	25489.6	23962.7	21248.7	19636.3	18251.8	17033.0	15742.4
32.5°	26785.2	25866.3	24756.3	23303.8	21855.9	20285.9	17664.9	16104.1	14781.6	13609.1	12441.0
35°	23400.0	22414.6	21240.3	19758.7	18319.5	16793.1	14388.2	12980.8	11813.0	10776.6	9833.4
37.5°	19768.8	18801.3	17685.1	16288.7	14954.2	13571.0	11495.9	10316.6	9336.5	8476.4	7748.0
40°	15993.3	15146.6	14180.9	12973.7	11834.8	10682.8	8979.4	8043.3	7269.9	6613.8	6068.1
42.5°	12264.1	11607.9	10867.3	9913.4	9041.8	8164.8	6853.7	6160.0	5587.2	5115.0	4729.1
45°	8898.0	8459.0	7962.4	7299.2	6696.1	6084.3	5151.1	4663.8	4290.7	3986.2	3728.7
47.5°	6220.1	5965.5	5950.1	5337.2	4894.9	4520.9	3919.7	3611.8	3383.2	3198.7	3035.7
50°	4368.2	4245.1	4092.1	3873.3	3668.1	3456.6	3090.4	2904.2	2770.4	2658.6	2555.5
52.5°	3265.6	3201.6	3120.1	3004.1	2892.8	2773.9	2542.2	2423.7	2381.6	2277.5	2195.9
55°	2608.3	2571.6	2525.2	2457.1	2389.4	2362.3	2163.7	2075.7	2020.0	1979.0	1935.1
57.5°	2166.6	2139.2	2111.7	2065.5	2026.4	1979.0	1873.5	1828.4	1795.3	1771.1	1740.7
60°	1848.1	1831.7	1816.3	1789.2	1768.1	1742.5	1675.5	1650.1	1632.8	1618.3	1598.9
62.5°	1631.1	1622.8	1614.8	1600.3	1589.6	1575.7	1530.0	1517.7	1509.0	1501.8	1489.9
65°	1474.5	1468.5	1464.1	1454.5	1449.1	1441.0	1401.7	1393.5	1388.0	1385.5	1378.6
67.5°	1332.3	1326.0	1323.1	1316.2	1314.0	1308.9	1276.7	1272.2	1270.4	1271.2	1268.8
70°	1199.2	1196.5	1198.0	1196.8	1199.9	1200.8	1181.3	1181.2	1183.2	1187.4	1187.7
72.5°	1119.4	1119.4	1120.9	1121.7	1124.6	1125.9	1109.7	1108.9	1109.8	1112.9	1113.0
75°	1043.5	1044.8	1048.9	1050.3	1053.7	1054.4	1032.9	1030.5	1030.7	1033.5	1032.6
77.5°	938.5	943.0	950.9	955.0	961.6	962.9	938.8	936.0	936.1	939.0	936.5
80°	819.3	828.0	840.5	849.1	859.4	863.5	838.7	832.8	827.3	826.5	821.6
82.5°	692.7	703.3	718.3	726.2	737.0	739.5	698.1	690.3	685.5	686.0	681.5
85°	528.8	536.8	550.4	554.9	561.6	561.0	513.7	493.5	498.9	490.5	497.1
87.5°	331.7	336.4	344.9	346.0	349.2	348.5	300.9	291.6	288.8	288.9	285.5
90°	192.3	197.4	206.7	208.6	215.4	216.7	180.1	177.5	172.6	172.7	166.4
92.5°	83.3	89.0	95.0	100.8	106.8	112.7	114.3	118.8	113.1	106.8	101.2
95°	97.5	107.0	116.6	126.2	135.7	145.2	154.8	164.3	155.4	146.5	137.6
97.5°	109.6	120.9	132.1	143.4	154.6	165.9	177.2	188.5	179.0	169.1	159.6
100°	143.8	164.9	185.7	206.8	227.8	248.8	269.9	290.9	272.4	253.8	235.3
102.5°	297.6	342.4	387.0	431.5	476.1	520.9	565.6	610.3	567.9	525.3	482.8
105°	575.5	647.9	720.3	792.3	864.6	937.1	1009.7	1082.1	1014.3	946.4	878.6
107.5°	911.5	985.0	1058.1	1131.4	1204.8	1278.1	1352.1	1425.5	1359.2	1292.9	1226.7
110°	1120.5	1173.8	1227.4	1280.8	1334.2	1387.7	1442.1	1495.6	1455.8	1416.0	1376.3



TEST NUMBER: P1444768
 CATALOG NUMBER: EHBR1-48-UNV-TA-L935-UPL40

CANDELA DISTRIBUTION (continued):

	27.5°	30°	32.5°	35°	37.5°	40°	42.5°	45°	47.5°	50°	52.5°
112.5°	1166.7	1205.1	1243.4	1281.4	1319.4	1357.8	1397.2	1435.6	1415.5	1395.4	1375.5
115°	1104.2	1130.2	1155.8	1181.4	1207.1	1232.8	1259.9	1286.1	1279.5	1273.0	1266.6
117.5°	995.4	1009.7	1024.2	1038.5	1052.6	1066.9	1083.2	1097.8	1098.7	1099.7	1100.8
120°	879.5	885.7	891.6	897.5	903.3	909.2	917.5	923.9	929.2	934.2	939.5
122.5°	781.2	783.4	785.4	787.7	789.8	791.9	796.7	799.5	802.9	806.5	810.1
125°	702.2	703.2	704.1	705.2	705.8	706.9	711.0	712.5	712.6	712.6	712.6
127.5°	649.5	649.6	649.6	649.7	649.4	649.6	652.8	653.5	651.1	648.7	646.2
130°	611.6	611.9	612.2	612.7	613.1	613.4	617.3	618.6	614.4	610.1	605.9
132.5°	586.9	587.6	587.9	588.8	589.3	589.7	594.1	595.5	590.8	585.9	581.0
135°	566.5	567.5	568.1	568.8	569.5	570.5	575.3	577.1	572.6	567.8	563.2
137.5°	549.4	550.3	551.0	552.0	552.7	553.6	558.9	560.8	557.2	553.2	549.7
140°	535.0	536.0	537.0	538.2	539.1	540.4	546.2	548.4	545.5	542.5	539.4
142.5°	520.2	522.0	523.5	525.2	526.7	528.5	535.2	537.9	535.8	533.4	531.3
145°	510.8	512.8	514.5	516.6	518.4	520.6	528.0	531.3	529.9	528.4	526.8
147.5°	502.4	504.2	505.9	507.6	509.4	511.6	519.4	522.6	521.9	520.7	519.9
150°	493.9	495.8	497.4	499.3	501.4	503.5	512.2	515.7	515.0	514.2	513.3
152.5°	484.2	485.7	487.2	489.0	490.7	492.6	503.0	506.7	506.2	505.2	504.6
155°	478.3	479.4	480.5	482.0	483.2	484.9	495.9	499.6	499.1	498.7	498.1
157.5°	476.6	477.3	478.0	479.0	480.0	480.9	492.3	496.0	495.5	495.1	494.7
160°	475.7	476.4	476.8	477.6	478.2	478.9	490.7	494.0	493.8	493.2	492.8
162.5°	475.8	476.9	477.5	478.5	479.3	480.4	492.1	496.0	495.3	494.7	494.0
165°	479.1	479.4	479.9	480.4	480.9	481.5	492.5	495.7	495.4	494.9	494.4
167.5°	482.9	483.5	483.9	484.6	485.2	486.0	496.2	499.3	499.0	498.4	498.1
170°	487.8	488.4	488.7	489.3	489.9	490.6	499.1	501.7	501.4	500.6	500.1
172.5°	492.3	493.0	493.6	494.2	494.8	495.6	502.8	505.3	504.9	504.4	503.7
175°	493.8	494.1	494.7	495.4	495.9	496.4	502.1	503.8	503.6	503.4	503.1
177.5°	498.4	498.6	499.0	499.5	499.9	500.3	503.7	504.9	504.7	504.7	504.6
180°	501.5	501.5	501.5	501.5	501.5	501.5	501.5	501.5	501.5	501.5	501.5



TEST NUMBER: P1444768
 CATALOG NUMBER: EHBR1-48-UNV-TA-L935-UPL40

CANDELA DISTRIBUTION (continued):

	55°	57.5°	60°	62.5°	65°	67.5°	70°	72.5°	75°	77.5°	80°
0°	37093.8	37093.8	37093.8	37093.8	37093.8	37093.8	37093.8	37093.8	37093.8	37093.8	37093.8
2.5°	37173.4	37186.4	37188.3	37203.6	37202.4	37220.5	37217.7	37232.5	37223.8	37236.1	37225.7
5°	38046.4	38125.6	38167.1	38244.3	38268.7	38337.9	38357.5	38420.6	38423.2	38473.2	38461.8
7.5°	39280.8	39397.6	39466.8	39562.4	39610.8	39690.4	39725.4	39784.3	39803.3	39850.0	39853.6
10°	40018.0	40074.6	40114.2	40140.9	40165.2	40176.7	40190.0	40186.4	40190.0	40184.7	40196.1
12.5°	39728.0	39645.3	39590.5	39486.9	39426.9	39312.3	39256.1	39146.0	39106.0	39011.4	38997.8
15°	38259.7	37971.3	37767.5	37471.2	37284.8	36993.3	36822.7	36559.7	36439.5	36230.4	36175.6
17.5°	35583.4	35048.0	34633.6	34102.2	33733.4	33236.6	32924.3	32513.1	32288.0	31956.3	31841.6
20°	31831.3	31039.1	30417.7	29677.3	29147.5	28487.4	28064.8	27531.7	27222.3	26815.1	26650.0
22.5°	27426.2	26440.0	25663.8	24789.2	24150.0	23414.3	22908.0	22331.3	21994.6	21552.2	21356.3
25°	22885.8	21798.3	20935.4	20013.8	19338.4	18601.0	18094.6	17528.0	17179.7	16759.7	16565.1
27.5°	18543.5	17442.6	16608.7	15751.9	15132.3	14466.9	14009.9	13515.4	13206.1	12847.7	12664.5
30°	14711.4	13740.4	13030.7	12319.7	11804.3	11263.9	10884.2	10474.3	10203.0	9896.0	9721.6
32.5°	11589.3	10839.7	10284.0	9719.8	9298.0	8846.4	8518.3	8156.6	7911.8	7637.6	7479.7
35°	9178.6	8596.1	8152.9	7688.5	7326.1	6941.5	6652.4	6340.1	6120.4	5884.4	5748.0
37.5°	7252.0	6788.9	6424.2	6038.4	5740.8	5422.1	5314.7	4956.4	4728.9	4540.5	4410.0
40°	5691.4	5323.1	5021.3	4726.3	4483.6	4241.9	4047.9	3856.5	3709.6	3574.8	3481.7
42.5°	4444.5	4177.7	3957.3	3741.2	3564.1	3388.0	3247.6	3115.7	3016.7	2928.6	2868.5
45°	3533.2	3349.7	3196.5	3044.4	2919.4	2801.8	2707.3	2623.1	2559.2	2506.3	2468.7
47.5°	2902.6	2777.0	2669.0	2566.3	2481.4	2404.4	2341.0	2320.4	2251.7	2205.4	2187.8
50°	2466.8	2391.0	2308.9	2233.1	2176.5	2120.1	2079.0	2038.7	2013.0	1991.7	1985.2
52.5°	2141.6	2083.6	2037.9	1989.9	1952.5	1912.4	1884.1	1857.2	1843.1	1832.0	1830.6
55°	1899.8	1859.2	1829.0	1796.8	1774.4	1750.8	1736.2	1722.0	1715.8	1710.2	1710.6
57.5°	1716.8	1689.7	1670.0	1649.2	1637.0	1625.8	1622.1	1618.5	1620.4	1621.2	1624.4
60°	1583.4	1565.9	1553.4	1541.5	1536.4	1532.9	1535.6	1538.8	1545.2	1550.5	1555.1
62.5°	1481.3	1471.2	1465.2	1458.7	1458.2	1458.5	1464.0	1469.3	1477.4	1483.5	1488.0
65°	1376.1	1370.4	1368.4	1364.3	1366.4	1367.6	1374.2	1378.3	1386.4	1391.2	1397.0
67.5°	1269.9	1268.5	1269.7	1269.7	1273.4	1276.6	1282.9	1287.6	1294.4	1298.9	1303.6
70°	1191.4	1191.9	1194.8	1195.4	1199.3	1201.5	1207.0	1210.0	1216.2	1219.9	1225.5
72.5°	1115.1	1113.8	1114.5	1112.7	1114.1	1113.5	1116.6	1118.0	1123.3	1126.2	1133.1
75°	1033.8	1030.4	1029.5	1025.9	1026.0	1023.3	1024.6	1024.4	1027.9	1029.2	1034.2
77.5°	935.6	929.9	927.1	920.9	920.8	918.5	920.9	922.5	928.5	931.3	937.1
80°	818.2	809.2	805.1	797.9	799.1	798.7	804.7	809.4	816.7	818.1	825.2
82.5°	680.1	670.9	666.5	659.4	661.1	661.3	666.8	667.7	674.1	676.9	685.2
85°	487.0	490.5	480.7	481.4	479.4	483.3	487.0	491.6	496.9	505.9	512.8
87.5°	286.8	285.5	288.9	289.4	294.4	296.9	304.9	309.4	318.4	325.4	338.1
90°	165.0	158.6	159.7	156.4	159.5	156.4	159.5	156.0	160.0	159.2	164.7
92.5°	94.6	88.9	82.4	76.6	70.2	64.7	61.4	59.0	55.7	53.5	50.0
95°	128.7	119.7	110.8	102.0	93.1	84.2	80.9	77.7	74.4	71.1	68.0
97.5°	150.1	140.5	131.0	121.3	111.7	102.1	100.0	97.8	95.6	93.4	91.3
100°	216.7	198.2	179.8	161.2	142.8	124.3	122.6	120.9	119.2	117.5	115.6
102.5°	440.5	398.1	355.7	313.3	271.0	228.5	221.1	213.7	206.4	198.9	191.6
105°	810.6	742.7	674.9	607.1	539.4	471.6	451.4	431.0	410.7	390.5	370.4
107.5°	1160.5	1094.3	1028.2	962.1	896.0	829.8	797.8	765.9	733.8	701.9	670.0
110°	1336.1	1296.3	1256.7	1216.8	1177.2	1137.5	1106.9	1076.5	1045.9	1015.5	985.0



TEST NUMBER: P1444768
 CATALOG NUMBER: EHBR1-48-UNV-TA-L935-UPL40

CANDELA DISTRIBUTION (continued):

	55°	57.5°	60°	62.5°	65°	67.5°	70°	72.5°	75°	77.5°	80°
112.5°	1355.5	1335.5	1315.4	1295.6	1275.8	1255.8	1240.9	1226.0	1211.2	1196.3	1181.2
115°	1260.0	1253.6	1247.2	1240.9	1234.7	1228.3	1227.1	1226.1	1224.8	1223.8	1222.8
117.5°	1101.7	1102.8	1103.7	1105.0	1106.1	1107.3	1115.1	1122.9	1130.8	1138.9	1147.0
120°	944.7	950.0	955.1	960.4	965.7	971.1	981.5	992.2	1002.7	1013.5	1024.4
122.5°	813.5	817.2	820.6	824.3	828.0	831.7	841.9	852.4	862.8	873.4	884.3
125°	712.4	712.4	712.4	712.2	712.2	712.5	720.8	729.3	738.0	746.9	755.6
127.5°	643.7	641.0	638.4	636.1	633.3	631.1	635.9	640.9	645.8	651.0	656.1
130°	601.5	597.2	592.6	588.5	583.9	579.8	581.5	583.4	585.2	587.2	589.3
132.5°	576.0	571.1	566.0	560.9	555.9	551.0	550.6	550.3	550.1	550.1	550.1
135°	558.4	553.9	548.9	544.1	539.2	534.6	533.2	531.7	530.4	529.1	528.0
137.5°	545.9	542.0	538.1	534.5	530.3	526.6	524.5	522.9	520.9	519.5	517.7
140°	536.4	533.4	530.1	527.0	523.9	520.9	519.1	517.7	516.1	514.8	513.3
142.5°	528.8	526.5	524.1	521.9	519.4	517.2	515.5	514.1	512.6	511.4	509.9
145°	525.3	523.8	522.1	520.6	519.0	517.5	516.1	515.0	513.8	512.7	511.9
147.5°	518.9	517.8	516.8	515.7	514.5	513.5	512.5	512.0	510.9	510.4	509.5
150°	512.3	511.4	510.4	509.6	508.4	507.5	506.9	506.5	505.8	505.6	505.0
152.5°	503.5	502.7	501.8	501.1	500.0	499.1	498.6	498.3	497.8	497.6	496.9
155°	497.5	496.9	496.2	495.7	494.9	494.4	493.8	493.0	492.5	492.0	491.3
157.5°	494.1	493.6	492.9	492.5	491.7	491.1	490.6	490.1	489.3	488.9	488.2
160°	492.2	491.9	491.1	490.6	490.1	489.5	488.6	488.0	487.1	486.5	485.5
162.5°	493.2	492.5	491.8	491.0	490.1	489.5	488.9	488.3	487.7	487.2	486.5
165°	493.9	493.3	492.8	492.2	491.8	491.2	490.4	489.7	488.9	488.2	487.3
167.5°	497.6	497.2	496.7	496.2	495.6	495.0	494.4	493.6	492.9	492.0	491.1
170°	499.6	498.8	498.3	497.6	496.9	496.2	495.6	494.8	494.0	493.5	492.6
172.5°	503.3	502.9	502.3	501.8	501.0	500.6	500.1	499.5	498.8	498.2	497.8
175°	503.0	502.8	502.7	502.3	502.2	501.9	501.7	501.5	501.2	501.1	500.7
177.5°	504.6	504.5	504.5	504.2	504.1	504.1	503.7	503.5	503.2	502.8	502.6
180°	501.5	501.5	501.5	501.5	501.5	501.5	501.5	501.5	501.5	501.5	501.5



TEST NUMBER: P1444768
 CATALOG NUMBER: EHBR1-48-UNV-TA-L935-UPL40

CANDELA DISTRIBUTION (continued):

	82.5°	85°	87.5°	90°	92.5°	95°	97.5°	100°	102.5°	105°	107.5°
0°	37093.8	37093.8	37093.8	37093.8	37093.8	37093.8	37093.8	37093.8	37093.8	37093.8	37093.8
2.5°	37236.4	37227.0	37231.5	37214.1	37218.2	37197.2	37195.2	37171.5	37169.1	37146.7	37138.3
5°	38497.2	38476.5	38499.9	38463.4	38470.6	38423.2	38419.2	38357.8	38336.7	38260.0	38226.9
7.5°	39882.8	39875.0	39889.3	39858.8	39857.8	39815.5	39798.0	39743.1	39708.9	39628.4	39576.9
10°	40186.4	40193.5	40181.8	40184.7	40168.2	40163.7	40146.8	40136.1	40108.4	40087.6	40056.8
12.5°	38925.9	38933.5	38885.3	38915.9	38891.8	38948.0	38943.5	39009.8	39019.9	39103.8	39135.6
15°	36012.7	36003.7	35911.4	35969.5	35938.3	36061.7	36089.4	36255.4	36344.3	36557.5	36688.5
17.5°	31611.9	31588.1	31458.1	31528.9	31492.9	31674.9	31736.0	32001.6	32167.3	32510.8	32755.6
20°	26365.8	26320.3	26168.3	26251.2	26214.1	26420.9	26508.0	26829.0	27042.7	27497.7	27821.4
22.5°	21054.7	20982.8	20833.9	20911.3	20876.2	21090.5	21203.8	21526.0	21770.7	22237.8	22615.7
25°	16285.3	16221.2	16077.3	16131.5	16118.4	16299.6	16400.5	16705.2	16945.6	17390.6	17751.4
27.5°	12421.1	12354.5	12224.5	12262.8	12249.6	12404.0	12499.1	12753.6	12960.5	13335.1	13651.9
30°	9506.6	9426.2	9315.9	9337.1	9328.0	9453.1	9541.9	9756.3	9933.6	10250.2	10523.1
32.5°	7286.8	7206.0	7104.6	7114.6	7101.2	7199.3	7272.5	7458.9	7613.4	7882.6	8120.2
35°	5575.4	5669.8	5453.5	5590.5	5447.9	5657.3	5582.0	5698.5	5831.4	6058.2	6256.3
37.5°	4286.1	4220.3	4164.7	4158.7	4158.4	4207.0	4264.3	4376.5	4493.6	4662.6	4837.2
40°	3396.6	3350.3	3314.4	3311.7	3314.4	3348.9	3391.2	3468.7	3554.5	3675.9	3804.1
42.5°	2817.1	2786.4	2764.8	2763.2	2770.1	2794.6	2824.0	2870.1	2925.9	3004.5	3092.5
45°	2438.2	2421.2	2409.1	2408.4	2411.6	2424.3	2441.3	2470.0	2505.4	2554.4	2610.0
47.5°	2172.4	2168.2	2160.7	2161.0	2157.5	2162.8	2164.7	2180.7	2199.6	2236.5	2309.3
50°	1978.8	1978.8	1973.5	1973.3	1968.4	1968.1	1963.9	1970.3	1979.1	2002.0	2025.3
52.5°	1825.8	1825.3	1819.6	1818.5	1813.3	1813.0	1809.4	1811.9	1813.1	1824.7	1838.6
55°	1706.2	1702.6	1695.2	1692.8	1690.8	1693.8	1692.5	1692.6	1691.0	1695.9	1700.0
57.5°	1620.4	1615.7	1608.7	1606.6	1606.1	1609.6	1609.8	1608.6	1602.1	1597.8	1591.5
60°	1552.5	1547.8	1540.2	1538.3	1539.4	1544.4	1544.1	1539.9	1530.3	1522.0	1512.2
62.5°	1485.8	1483.9	1480.0	1479.5	1478.5	1479.4	1476.0	1471.5	1462.0	1453.1	1442.5
65°	1396.3	1397.3	1394.4	1394.8	1391.4	1390.9	1385.6	1381.3	1371.7	1363.6	1352.8
67.5°	1303.4	1304.1	1301.8	1301.8	1299.9	1300.2	1297.0	1293.1	1285.0	1278.4	1269.9
70°	1226.8	1228.7	1227.4	1227.8	1225.5	1224.7	1219.8	1215.9	1207.6	1202.1	1194.5
72.5°	1135.1	1139.3	1139.1	1140.1	1136.8	1135.1	1129.2	1124.4	1116.9	1112.4	1106.4
75°	1036.1	1041.5	1043.0	1045.4	1040.6	1038.2	1031.8	1027.9	1021.7	1019.1	1015.1
77.5°	939.5	945.4	951.0	956.3	948.7	941.9	933.9	927.7	918.8	915.5	909.2
80°	831.0	841.4	853.9	864.5	850.9	837.1	823.8	813.9	802.2	797.4	789.7
82.5°	689.4	700.1	707.3	714.0	704.6	694.5	681.6	672.9	660.3	655.6	646.7
85°	523.8	537.1	541.4	545.0	538.9	533.6	521.4	505.1	497.1	484.6	478.2
87.5°	344.5	352.5	354.0	355.2	351.6	348.9	341.1	333.3	319.8	309.9	297.7
90°	162.5	165.9	161.1	161.2	158.2	160.4	154.3	153.4	144.0	141.6	133.4
92.5°	47.5	44.3	41.6	38.7	42.1	44.4	47.8	50.0	53.4	55.7	59.0
95°	64.7	61.4	58.2	54.9	57.6	60.1	62.7	65.3	67.9	70.5	73.1
97.5°	89.1	86.9	84.7	82.6	84.1	85.6	87.1	88.6	90.2	91.7	93.4
100°	113.9	112.2	110.5	108.8	108.8	108.8	108.8	108.8	108.8	108.8	108.8
102.5°	184.2	176.8	169.4	162.1	167.0	172.0	177.0	182.0	187.1	192.1	197.2
105°	350.2	330.0	309.9	289.7	309.1	328.7	348.2	367.8	387.3	407.1	426.6
107.5°	638.0	606.1	574.2	542.3	578.1	613.6	649.2	684.8	720.4	756.0	791.9
110°	954.6	924.3	893.9	863.6	901.3	939.0	976.8	1014.5	1052.4	1090.1	1128.2



TEST NUMBER: P1444768
 CATALOG NUMBER: EHBR1-48-UNV-TA-L935-UPL40

CANDELA DISTRIBUTION (continued):

	82.5°	85°	87.5°	90°	92.5°	95°	97.5°	100°	102.5°	105°	107.5°
112.5°	1166.4	1151.8	1137.0	1122.2	1146.5	1170.8	1195.1	1219.6	1244.0	1268.5	1292.8
115°	1221.8	1220.9	1220.1	1219.2	1230.7	1242.2	1253.7	1265.4	1276.9	1288.4	1300.2
117.5°	1154.9	1163.0	1171.2	1179.5	1183.2	1186.9	1190.7	1194.5	1198.4	1202.2	1206.1
120°	1035.3	1046.0	1057.1	1068.1	1066.6	1065.0	1063.7	1062.1	1061.0	1059.6	1058.8
122.5°	895.1	905.9	916.9	927.9	924.6	921.4	918.2	915.1	912.2	909.2	906.4
125°	764.8	773.7	782.9	792.1	788.9	785.6	782.4	779.6	776.6	773.6	771.0
127.5°	661.7	667.3	672.7	678.5	676.9	675.4	674.4	672.9	671.9	670.9	670.0
130°	591.6	593.9	596.6	599.0	599.4	599.9	600.7	601.4	602.4	603.3	604.4
132.5°	550.5	550.7	551.2	551.8	553.5	555.2	557.4	559.4	561.8	563.9	566.9
135°	527.2	526.5	525.8	525.3	527.9	530.4	533.3	536.2	539.4	542.8	546.2
137.5°	516.5	515.2	514.3	513.1	515.7	518.2	521.1	524.0	527.2	530.5	534.1
140°	512.3	511.2	510.4	509.4	512.1	514.5	517.3	520.2	523.5	526.8	530.1
142.5°	508.9	507.7	507.0	506.3	508.4	510.8	513.5	516.1	519.1	521.9	525.0
145°	510.9	510.1	509.5	508.9	510.4	512.2	514.2	516.2	518.3	520.3	523.0
147.5°	509.0	508.5	508.2	507.7	509.0	510.3	511.6	512.9	514.7	516.2	518.1
150°	504.9	504.5	504.3	504.2	505.0	505.6	506.7	507.4	508.5	509.5	511.0
152.5°	496.9	496.4	496.6	496.3	496.9	497.6	498.5	499.2	500.2	501.0	502.4
155°	491.0	490.6	490.1	489.8	490.0	490.1	490.5	490.7	491.2	491.6	492.0
157.5°	488.0	487.4	487.2	486.6	486.5	486.3	486.4	486.4	486.6	486.4	486.6
160°	485.1	484.3	483.5	482.9	483.1	483.0	483.3	483.2	483.4	483.6	483.9
162.5°	486.1	485.5	485.2	484.6	484.3	483.7	483.4	482.9	482.6	482.3	482.3
165°	486.5	485.8	485.2	484.3	484.2	484.1	483.8	483.6	483.6	483.3	483.3
167.5°	490.6	489.8	489.1	488.3	487.9	487.1	486.7	486.2	485.6	485.2	485.0
170°	492.0	491.3	490.8	490.2	490.0	489.5	489.4	489.0	488.9	488.7	488.7
172.5°	497.1	496.6	496.0	495.6	495.3	495.0	494.9	494.8	494.5	494.5	494.3
175°	500.5	500.2	500.1	499.8	499.5	499.2	498.9	498.8	498.5	498.1	497.9
177.5°	502.1	501.8	501.6	501.4	501.2	501.2	501.2	501.2	501.2	501.1	500.9
180°	501.5	501.5	501.5	501.5	501.5	501.5	501.5	501.5	501.5	501.5	501.5



TEST NUMBER: P1444768
 CATALOG NUMBER: EHBR1-48-UNV-TA-L935-UPL40

CANDELA DISTRIBUTION (continued):

	110°	112.5°	115°	117.5°	120°	122.5°	125°	127.5°	130°	132.5°	135°
0°	37093.8	37093.8	37093.8	37093.8	37093.8	37093.8	37093.8	37093.8	37093.8	37093.8	37093.8
2.5°	37114.3	37104.5	37078.8	37066.1	37042.4	37030.4	37011.9	36999.9	36984.9	36973.8	36968.0
5°	38142.6	38095.1	38000.0	37941.5	37838.8	37771.1	37669.1	37594.4	37489.0	37411.4	37311.8
7.5°	39480.4	39407.6	39285.8	39193.4	39049.7	38939.9	38778.7	38649.7	38471.6	38323.6	38141.6
10°	40025.1	39982.6	39928.0	39868.5	39788.9	39710.9	39600.8	39488.6	39339.0	39190.2	38995.9
12.5°	39220.1	39260.1	39339.0	39375.8	39436.2	39456.7	39484.3	39471.4	39446.9	39386.2	39298.1
15°	36940.1	37107.1	37371.0	37553.7	37809.4	37989.1	38226.9	38379.9	38556.1	38661.4	38761.4
17.5°	33189.5	33512.6	33978.4	34350.0	34848.8	35254.4	35751.3	36141.8	36592.6	36938.4	37306.6
20°	28385.6	28838.0	29481.0	30027.0	30749.9	31362.9	32148.1	32805.9	33573.3	34213.0	34903.4
22.5°	23215.3	23747.5	24484.2	25142.9	26006.1	26777.0	27761.0	28630.8	29668.1	30597.5	31625.4
25°	18337.8	18859.3	19609.9	20291.8	21223.6	22072.9	23147.8	24145.7	25349.5	26472.2	27761.0
27.5°	14155.0	14618.3	15278.0	15891.8	16745.3	17579.1	18669.9	19734.0	21018.5	22225.0	23613.9
30°	10931.7	11307.5	11836.1	12329.9	13015.1	13697.0	14668.6	15652.7	16930.9	18181.1	19605.0
32.5°	8471.7	8792.1	9233.4	9634.3	10162.2	10676.4	11391.9	12178.3	13299.5	14497.0	15873.8
35°	6558.0	6832.2	7207.8	7553.1	7987.2	8395.4	8929.3	9490.6	10346.3	11353.6	12585.7
37.5°	5228.4	5340.2	5608.3	5891.1	6251.8	6587.2	7004.8	7419.8	8032.1	8826.8	9833.4
40°	3976.2	4153.6	4371.8	4594.6	4867.7	5136.7	5595.0	5815.6	6218.6	6789.1	7570.4
42.5°	3208.2	3333.0	3486.6	3641.5	3831.8	4019.2	4251.0	4487.1	4788.3	5174.8	5730.4
45°	2684.7	2766.1	2865.1	2968.3	3093.3	3221.2	3376.3	3538.4	3742.6	3980.1	4317.7
47.5°	2335.0	2379.9	2444.6	2515.1	2600.7	2689.3	2790.1	2893.5	3020.3	3161.2	3353.4
50°	2062.0	2099.5	2149.7	2196.9	2255.9	2346.7	2386.7	2443.7	2520.0	2603.0	2710.5
52.5°	1864.4	1889.4	1921.0	1948.0	1985.4	2019.4	2063.9	2103.2	2156.0	2205.7	2275.2
55°	1710.6	1719.7	1737.5	1755.0	1780.8	1804.0	1834.6	1860.3	1894.0	1923.8	1967.5
57.5°	1591.8	1592.6	1600.8	1609.9	1626.6	1641.2	1662.2	1679.1	1702.4	1721.5	1747.7
60°	1506.4	1501.9	1503.5	1506.7	1516.1	1525.5	1539.0	1550.0	1564.7	1575.5	1590.2
62.5°	1435.4	1428.2	1426.6	1425.7	1430.5	1433.8	1441.2	1446.5	1454.9	1459.6	1467.4
65°	1345.6	1337.2	1333.9	1330.0	1331.4	1330.3	1333.1	1333.2	1337.5	1338.5	1343.0
67.5°	1264.2	1257.2	1252.9	1247.7	1245.4	1241.7	1240.0	1236.4	1235.9	1232.9	1232.2
70°	1190.0	1183.1	1179.5	1174.7	1172.2	1167.3	1164.3	1158.2	1154.7	1149.0	1145.9
72.5°	1104.1	1100.2	1099.1	1095.8	1094.9	1092.2	1090.9	1086.7	1084.2	1079.4	1076.7
75°	1014.3	1011.1	1010.8	1007.6	1007.3	1003.9	1003.1	998.6	996.2	991.4	989.4
77.5°	907.3	902.6	901.3	897.4	898.4	896.7	898.1	894.6	893.2	888.4	886.8
80°	786.9	780.9	778.4	773.3	774.6	772.4	774.6	774.4	776.2	772.4	771.6
82.5°	644.2	637.6	636.3	632.8	635.2	635.4	640.5	637.8	638.9	635.2	636.8
85°	468.8	463.9	457.0	456.0	451.6	456.2	450.3	454.3	447.7	452.3	446.3
87.5°	290.7	280.4	275.1	267.8	265.0	258.0	255.1	250.1	251.6	249.2	250.6
90°	132.8	125.7	126.4	122.0	123.9	120.4	123.7	122.0	126.0	124.2	128.5
92.5°	61.4	64.2	69.3	74.9	79.8	85.0	90.2	95.7	100.7	106.1	111.1
95°	75.7	78.3	85.3	92.2	99.2	106.1	113.1	120.1	127.1	134.0	140.9
97.5°	94.9	96.4	103.4	110.3	117.3	124.3	131.1	138.4	145.4	152.3	159.2
100°	108.8	108.9	128.6	148.4	168.0	188.0	207.7	227.5	247.4	267.2	286.9
102.5°	202.2	207.2	257.1	307.1	357.0	406.9	457.0	507.1	557.0	607.1	657.2
105°	446.2	465.8	541.9	618.3	694.4	770.7	847.1	923.5	999.8	1076.2	1152.4
107.5°	827.4	863.1	932.1	1000.9	1069.7	1138.8	1207.8	1276.7	1345.6	1414.7	1483.9
110°	1165.9	1203.9	1250.0	1296.2	1342.5	1388.7	1435.0	1481.2	1527.7	1573.9	1620.5



TEST NUMBER: P1444768
 CATALOG NUMBER: EHBR1-48-UNV-TA-L935-UPL40

CANDELA DISTRIBUTION (continued):

	110°	112.5°	115°	117.5°	120°	122.5°	125°	127.5°	130°	132.5°	135°
112.5°	1317.2	1341.7	1368.6	1395.7	1422.8	1449.8	1476.8	1503.9	1531.2	1558.3	1585.4
115°	1312.0	1323.8	1334.2	1344.9	1355.4	1366.1	1376.7	1387.6	1398.6	1409.3	1420.1
117.5°	1210.0	1214.3	1215.8	1217.7	1219.5	1221.6	1223.5	1225.5	1227.6	1229.8	1231.6
120°	1057.5	1056.3	1054.7	1053.2	1051.6	1050.3	1048.9	1047.5	1046.4	1045.1	1043.7
122.5°	903.5	901.0	899.4	898.0	896.6	895.5	894.3	893.4	892.2	891.1	889.8
125°	768.3	765.8	767.7	769.4	771.3	773.3	775.0	777.4	779.4	781.3	783.5
127.5°	669.1	668.5	672.8	677.1	681.5	685.9	690.4	695.0	699.3	704.1	708.5
130°	605.7	607.1	612.5	618.2	623.6	629.4	635.0	640.9	646.3	652.0	657.6
132.5°	569.3	572.3	577.2	582.9	588.1	593.6	599.2	604.7	610.1	615.9	621.0
135°	549.7	553.5	558.3	563.3	568.3	573.4	578.3	583.6	588.4	593.5	598.4
137.5°	537.5	541.2	545.2	549.2	553.1	557.5	561.7	565.8	569.7	573.9	577.8
140°	533.6	537.3	539.5	542.3	544.6	547.2	549.5	552.1	554.3	557.1	559.3
142.5°	528.1	531.6	532.9	534.6	536.4	538.4	540.0	541.7	543.3	544.8	546.2
145°	525.2	527.8	528.1	528.7	529.1	529.6	529.8	530.4	530.6	530.9	531.1
147.5°	520.0	521.9	521.7	521.9	521.9	521.8	521.8	521.9	521.5	521.6	521.5
150°	512.1	513.5	512.9	512.7	512.1	511.8	511.2	511.0	510.4	510.1	509.4
152.5°	503.3	504.6	503.6	503.4	502.6	502.0	501.3	500.8	500.1	499.6	499.0
155°	492.4	493.0	492.5	492.2	491.9	491.5	491.0	491.0	490.8	490.5	490.3
157.5°	486.7	486.8	486.6	486.3	486.0	485.9	485.7	485.5	485.5	485.7	485.8
160°	483.9	484.3	483.9	483.6	483.4	483.2	483.0	483.0	483.0	483.3	483.3
162.5°	481.8	481.7	481.4	481.1	480.9	480.9	480.7	481.0	480.9	481.1	481.3
165°	483.5	483.7	483.0	482.8	482.4	482.1	481.8	481.6	481.7	481.6	481.6
167.5°	484.5	484.3	484.3	484.5	484.5	484.6	484.8	485.3	485.4	486.0	486.2
170°	488.6	488.7	488.4	488.2	488.1	488.1	487.9	487.9	488.0	488.0	487.9
172.5°	494.3	494.3	493.9	493.4	493.0	492.8	492.3	492.1	491.8	491.4	491.0
175°	497.6	497.4	497.2	496.9	496.8	496.3	496.1	495.6	495.4	495.1	494.9
177.5°	500.8	500.6	500.4	500.4	500.3	500.1	500.1	500.0	500.0	500.0	499.7
180°	501.5	501.5	501.5	501.5	501.5	501.5	501.5	501.5	501.5	501.5	501.5



TEST NUMBER: P1444768
 CATALOG NUMBER: EHBR1-48-UNV-TA-L935-UPL40

CANDELA DISTRIBUTION (continued):

	137.5°	140°	142.5°	145°	147.5°	150°	152.5°	155°	157.5°	160°	162.5°
0°	37093.8	37093.8	37093.8	37093.8	37093.8	37093.8	37093.8	37093.8	37093.8	37093.8	37093.8
2.5°	36960.6	36960.2	36956.6	36958.2	36958.9	36961.6	36964.7	36968.0	36968.7	36971.2	36971.8
5°	37237.2	37145.7	37078.1	37003.7	36947.8	36897.5	36863.9	36837.3	36827.0	36829.6	36835.8
7.5°	37987.2	37798.5	37642.7	37465.7	37318.0	37161.7	37032.1	36908.9	36819.1	36752.2	36714.8
10°	38810.3	38580.4	38360.5	38104.3	37861.2	37601.8	37366.8	37130.2	36932.9	36761.6	36635.8
12.5°	39175.5	39013.0	38823.0	38581.1	38321.0	38021.7	37719.4	37395.4	37094.1	36814.3	36588.7
15°	38788.8	38789.1	38719.8	38603.8	38423.2	38183.9	37896.0	37558.2	37202.6	36839.8	36508.4
17.5°	37561.2	37792.8	37921.6	38003.2	37978.2	37890.0	37706.7	37447.3	37115.9	36729.4	36325.0
20°	35453.1	35999.3	36388.8	36739.1	36935.4	37065.9	37052.8	36947.2	36711.2	36382.6	35961.4
22.5°	32499.8	33416.7	34140.3	34815.0	35288.2	35673.1	35856.1	35933.8	35826.8	35597.9	35202.4
25°	28912.8	30159.6	31223.5	32256.1	33030.6	33696.2	34096.3	34378.2	34400.5	34280.9	33928.1
27.5°	24927.0	26398.7	27745.3	29117.5	30206.8	31163.7	31791.6	32251.1	32397.1	32377.9	32057.4
30°	20946.4	22491.3	23975.6	25575.8	26923.6	28146.1	28975.5	29597.1	29836.5	29882.5	29574.2
32.5°	17187.0	18710.4	20190.7	21863.6	23346.8	24748.0	25727.9	26466.1	26744.6	26810.2	26472.2
35°	13775.2	15180.7	16587.4	18208.7	19683.4	21134.3	22166.8	22939.7	23199.9	23243.7	22852.3
37.5°	10816.5	12014.0	13239.7	14694.5	16048.7	17411.4	18392.4	19118.7	19308.3	19296.6	18853.5
40°	8325.3	9256.2	10241.2	11438.8	12564.7	13716.6	14545.0	15145.5	15245.0	15171.3	14706.0
42.5°	6260.2	6932.5	7646.6	8540.6	9376.0	10238.1	10840.8	11286.6	11300.7	11184.2	10766.6
45°	4663.8	5319.8	5619.2	6159.8	6697.9	7271.1	7639.2	7914.5	7871.9	7769.3	7451.9
47.5°	3555.3	3807.5	4074.9	4410.0	4723.4	5374.0	5325.8	5768.0	5449.5	5666.6	5188.6
50°	2823.3	2964.2	3108.3	3286.2	3449.9	3620.0	3726.2	3805.6	3795.3	3761.2	3669.6
52.5°	2402.0	2445.5	2516.4	2617.7	2709.0	2801.0	2861.6	2910.8	2911.7	2898.0	2851.6
55°	2007.5	2062.8	2113.8	2179.9	2292.6	2309.9	2396.6	2379.0	2385.8	2361.8	2386.5
57.5°	1770.0	1802.1	1830.9	1870.2	1902.7	1940.7	1963.1	1984.7	1982.7	1978.0	1954.3
60°	1601.7	1619.4	1635.4	1658.3	1676.3	1697.6	1708.0	1718.9	1715.4	1707.4	1686.4
62.5°	1472.0	1483.0	1492.2	1507.0	1517.8	1531.2	1536.6	1541.2	1536.6	1529.0	1510.4
65°	1343.9	1351.1	1356.9	1368.0	1375.7	1387.1	1391.7	1396.0	1391.8	1385.9	1371.7
67.5°	1228.4	1229.2	1228.6	1233.2	1235.5	1242.4	1244.4	1247.6	1242.7	1237.5	1225.5
70°	1140.9	1139.1	1136.9	1138.7	1139.1	1142.4	1143.0	1142.4	1136.5	1127.7	1114.6
72.5°	1072.5	1071.5	1069.8	1071.4	1071.4	1074.4	1073.4	1071.9	1064.6	1056.1	1043.2
75°	984.5	983.7	980.5	980.6	977.8	978.8	975.2	973.2	965.1	957.9	946.4
77.5°	881.5	879.9	875.1	873.2	868.0	865.8	859.1	855.8	847.5	841.7	831.8
80°	766.6	764.8	758.6	755.2	746.9	741.6	731.8	726.2	716.6	711.0	701.4
82.5°	633.6	634.3	628.1	623.8	612.0	603.0	589.7	582.6	572.2	566.6	556.8
85°	450.6	444.2	447.6	447.4	439.9	432.0	421.4	413.8	405.0	399.8	392.8
87.5°	247.2	248.7	246.9	245.4	240.2	236.2	227.8	223.4	217.0	213.8	208.5
90°	119.3	116.4	107.5	104.7	95.9	90.9	81.1	77.0	68.0	65.8	60.2
92.5°	105.2	99.4	93.8	87.6	82.1	76.2	70.3	64.5	58.6	56.4	54.7
95°	132.5	124.2	115.7	107.2	98.8	90.3	81.9	73.4	65.0	63.3	61.5
97.5°	149.4	139.4	129.4	119.6	109.6	99.6	89.7	79.8	69.8	68.7	67.6
100°	264.0	241.2	218.2	195.2	172.3	149.3	126.5	103.5	80.7	79.4	78.0
102.5°	601.4	545.8	490.1	434.6	379.0	323.3	267.6	211.8	156.3	148.2	140.2
105°	1068.2	983.8	899.9	815.5	731.3	646.9	562.8	478.4	394.2	367.2	340.1
107.5°	1404.8	1325.5	1246.5	1167.4	1088.1	1009.1	929.8	850.5	771.3	723.6	676.0
110°	1557.6	1494.8	1432.2	1369.3	1306.6	1243.7	1180.8	1118.0	1055.1	1014.0	973.2



TEST NUMBER: P1444768
 CATALOG NUMBER: EHBR1-48-UNV-TA-L935-UPL40

CANDELA DISTRIBUTION (continued):

	137.5°	140°	142.5°	145°	147.5°	150°	152.5°	155°	157.5°	160°	162.5°
112.5°	1539.6	1493.5	1447.9	1401.7	1355.8	1309.6	1263.8	1217.6	1171.4	1146.6	1121.7
115°	1392.7	1364.9	1337.4	1309.7	1282.1	1254.5	1226.8	1198.8	1171.0	1158.0	1144.9
117.5°	1217.8	1203.7	1189.8	1175.8	1161.7	1147.5	1133.5	1119.2	1105.0	1100.6	1096.0
120°	1040.0	1035.8	1031.6	1027.4	1023.2	1019.1	1014.8	1010.5	1006.0	1006.8	1007.5
122.5°	891.9	893.6	895.6	897.2	899.2	900.7	902.7	904.1	905.8	909.4	913.0
125°	787.9	792.1	796.5	800.7	804.8	809.1	813.4	817.4	821.8	825.2	829.1
127.5°	713.6	718.2	723.2	727.8	732.7	737.4	742.2	746.6	751.4	754.8	758.4
130°	662.1	666.1	670.5	674.5	678.7	682.8	687.0	691.2	695.3	698.1	700.9
132.5°	624.8	628.7	632.5	636.1	640.0	643.7	647.5	651.2	655.2	657.2	659.4
135°	601.4	604.1	607.1	609.8	613.0	615.6	618.6	621.6	624.6	626.0	627.7
137.5°	580.1	582.5	585.0	587.3	589.8	592.2	594.8	597.3	600.1	600.7	601.9
140°	561.8	564.3	566.7	569.3	571.9	574.3	577.2	579.9	582.8	583.6	584.6
142.5°	548.3	550.1	552.1	554.0	556.2	558.1	560.4	562.7	565.1	566.0	566.9
145°	533.5	535.6	538.0	540.3	542.5	545.0	547.8	550.3	553.1	553.7	554.5
147.5°	523.3	525.2	527.3	529.3	531.5	533.5	535.9	538.3	540.7	541.4	542.0
150°	511.6	513.6	515.6	517.7	520.1	522.4	524.9	527.3	530.3	531.2	532.0
152.5°	501.2	503.3	505.6	508.0	510.5	513.1	515.7	518.4	521.2	522.0	523.0
155°	492.6	494.6	497.0	499.4	502.0	504.3	507.0	509.5	512.3	513.3	514.3
157.5°	487.9	489.7	491.8	494.0	496.2	498.5	500.9	503.1	505.6	506.5	507.3
160°	485.2	486.9	488.9	490.9	492.9	494.9	496.9	498.9	501.0	501.9	502.7
162.5°	483.1	485.1	487.0	488.7	490.9	492.8	494.9	496.8	498.9	499.6	500.4
165°	483.1	484.4	486.0	487.2	488.9	490.1	491.8	493.1	494.9	495.5	496.6
167.5°	487.5	488.4	489.4	490.5	491.9	493.0	494.2	495.3	496.7	497.4	498.2
170°	489.0	489.9	490.8	491.8	493.0	493.9	495.0	495.9	497.3	497.8	498.7
172.5°	491.7	492.1	493.0	493.5	494.2	494.9	495.6	496.4	497.1	497.9	498.7
175°	495.4	495.7	496.0	496.3	496.6	497.0	497.5	498.0	498.3	498.9	499.5
177.5°	499.9	500.2	500.4	500.6	501.1	501.3	501.6	501.8	502.2	502.8	503.6
180°	501.5	501.5	501.5	501.5	501.5	501.5	501.5	501.5	501.5	501.5	501.5



TEST NUMBER: P1444768
 CATALOG NUMBER: EHBR1-48-UNV-TA-L935-UPL40

CANDELA DISTRIBUTION (continued):

	165°	167.5°	170°	172.5°	175°	177.5°	180°	182.5°	185°	187.5°	190°
0°	37093.8	37093.8	37093.8	37093.8	37093.8	37093.8	37093.8	37093.8	37093.8	37093.8	37093.8
2.5°	36970.6	36970.2	36969.0	36967.3	36965.6	36966.6	36968.3	36972.5	36979.9	36990.6	37004.7
5°	36840.8	36848.4	36852.6	36853.2	36849.3	36847.0	36850.6	36860.8	36881.3	36915.6	36962.1
7.5°	36704.7	36714.0	36728.4	36739.1	36741.1	36738.5	36739.1	36755.0	36792.9	36859.8	36953.7
10°	36559.4	36531.8	36546.4	36573.0	36594.2	36598.0	36600.7	36619.5	36674.8	36775.9	36926.7
12.5°	36425.3	36337.8	36320.9	36345.0	36377.2	36387.4	36384.6	36392.6	36457.5	36591.3	36801.5
15°	36248.7	36084.1	36027.9	36034.1	36073.9	36088.1	36077.7	36061.7	36124.8	36288.3	36560.4
17.5°	35963.0	35697.8	35594.4	35589.8	35636.3	35648.6	35623.1	35573.6	35635.8	35839.7	36177.5
20°	35528.7	35137.1	34942.4	34911.5	34962.0	34947.2	34896.3	34821.4	34903.1	35151.2	35552.8
22.5°	34748.0	34251.8	33919.2	33812.0	33872.3	33832.1	33757.7	33662.2	33770.6	34052.4	34499.8
25°	33472.3	32898.9	32443.6	32188.2	32236.3	32164.1	32083.1	31967.4	32096.7	32420.2	32912.6
27.5°	31597.2	30934.8	30370.6	29947.7	29963.2	29868.7	29775.4	29625.6	29787.1	30170.1	30725.5
30°	29103.7	28337.2	27650.1	27075.5	27024.1	26932.4	26836.9	26640.3	26842.4	27300.7	27949.7
32.5°	25972.3	25121.3	24327.4	23600.8	23463.8	23374.3	23289.2	23062.9	23327.6	23861.9	24607.6
35°	22310.2	21403.8	20543.0	19713.2	19486.1	19396.6	19322.2	19105.4	19435.7	20017.2	20822.5
37.5°	18290.6	17364.6	16510.1	15659.1	15338.3	15216.8	15162.8	15020.8	15401.8	15977.0	16785.6
40°	14164.1	13303.1	12537.0	11785.4	11419.6	11233.9	11205.5	11179.7	11548.0	12047.0	12781.0
42.5°	10303.8	9609.2	9018.4	8443.9	8112.5	7858.9	7858.7	7935.7	8267.3	8641.0	9207.0
45°	7127.5	6661.3	6284.9	5901.1	6003.6	5498.0	5795.1	5642.6	5806.5	6047.5	6415.5
47.5°	4899.4	4644.9	4438.2	4223.8	4067.4	3918.2	3931.2	4027.5	4181.8	4324.8	4516.3
50°	3570.8	3441.2	3335.9	3224.6	3146.8	3080.9	3084.8	3126.5	3207.5	3282.9	3383.1
52.5°	2798.0	2726.5	2669.3	2607.8	2566.9	2534.2	2536.0	2556.2	2600.1	2643.0	2700.5
55°	2306.2	2297.6	2223.2	2167.9	2146.9	2125.0	2129.0	2136.9	2166.8	2191.9	2229.9
57.5°	1932.6	1899.2	1876.9	1847.8	1834.4	1819.1	1822.5	1825.5	1845.5	1862.3	1889.7
60°	1668.8	1645.2	1629.3	1609.5	1600.8	1591.0	1593.1	1595.0	1607.7	1618.8	1638.4
62.5°	1493.5	1472.3	1458.6	1443.3	1437.2	1430.5	1432.1	1432.6	1440.6	1448.7	1463.5
65°	1359.0	1342.3	1330.9	1317.7	1311.2	1304.4	1305.0	1305.0	1311.8	1317.7	1328.9
67.5°	1216.9	1204.2	1196.8	1186.4	1182.0	1175.0	1174.9	1172.6	1177.0	1179.4	1186.9
70°	1102.8	1090.0	1080.5	1070.5	1065.0	1058.9	1059.0	1059.1	1064.2	1069.6	1079.3
72.5°	1032.3	1020.1	1011.6	1002.9	997.7	992.4	991.4	990.9	994.6	997.5	1003.9
75°	939.0	929.2	924.3	916.0	911.9	906.0	905.0	902.3	904.1	904.6	909.4
77.5°	825.7	816.4	812.4	804.1	800.7	793.9	793.4	790.3	791.7	790.8	794.5
80°	696.6	688.2	686.0	679.1	677.5	671.3	670.3	666.6	667.7	664.8	666.2
82.5°	552.5	544.8	543.2	536.8	536.8	531.2	530.9	525.3	525.3	520.5	512.8
85°	389.2	383.6	381.2	376.0	374.5	370.0	367.6	362.3	360.4	356.9	355.8
87.5°	205.4	201.8	198.7	196.2	191.6	183.5	182.8	177.2	177.6	173.7	173.9
90°	58.7	53.5	52.1	47.2	45.7	42.1	40.6	41.2	42.5	43.1	44.5
92.5°	52.7	50.8	48.9	46.9	45.0	43.1	41.1	43.1	45.0	46.9	48.9
95°	59.8	58.1	56.3	54.6	52.8	51.1	49.4	51.1	52.8	54.7	56.5
97.5°	66.5	65.4	64.3	63.3	62.2	61.1	60.0	61.3	62.4	63.4	64.5
100°	76.8	75.5	74.1	72.9	71.6	70.2	69.0	70.5	71.9	73.1	74.4
102.5°	132.2	124.3	116.2	108.2	100.1	92.2	84.1	92.2	100.1	108.4	116.4
105°	312.9	285.9	258.8	231.7	204.6	177.5	150.4	177.5	204.6	231.8	259.1
107.5°	628.4	580.9	533.1	485.4	437.7	390.0	342.2	390.2	437.9	485.6	533.4
110°	932.0	890.8	849.9	808.7	767.5	726.4	685.2	726.5	767.8	809.0	850.2



TEST NUMBER: P1444768
 CATALOG NUMBER: EHBR1-48-UNV-TA-L935-UPL40

CANDELA DISTRIBUTION (continued):

	165°	167.5°	170°	172.5°	175°	177.5°	180°	182.5°	185°	187.5°	190°
112.5°	1096.7	1071.8	1046.7	1021.9	996.8	971.9	946.7	972.1	997.3	1022.5	1047.6
115°	1131.9	1118.7	1105.7	1092.5	1079.2	1065.9	1052.5	1066.4	1079.9	1093.3	1106.8
117.5°	1091.4	1087.1	1082.3	1077.8	1073.1	1068.5	1063.7	1068.7	1073.7	1079.0	1083.7
120°	1007.8	1008.7	1009.2	1009.7	1010.2	1010.6	1010.8	1011.1	1011.1	1011.1	1011.0
122.5°	916.6	920.2	923.6	927.2	930.5	933.9	937.0	934.4	931.6	928.9	925.8
125°	832.6	836.5	840.2	843.8	847.1	850.8	853.8	851.5	848.7	845.9	842.8
127.5°	761.8	765.0	768.4	771.8	774.7	777.8	780.6	778.6	776.2	773.8	771.2
130°	703.3	706.2	708.6	711.2	713.4	715.5	717.5	716.4	714.8	713.6	711.7
132.5°	661.3	663.6	665.6	667.5	669.1	670.9	672.0	671.7	670.9	670.1	668.9
135°	629.3	630.7	632.1	633.7	634.7	635.8	636.4	636.8	636.5	636.3	635.6
137.5°	602.7	603.7	604.4	605.2	605.6	606.0	606.1	607.0	607.4	608.1	608.1
140°	585.5	586.6	587.3	587.9	588.7	589.2	589.2	590.2	590.7	591.0	591.0
142.5°	567.9	568.8	569.6	570.4	570.9	571.3	571.4	572.3	572.8	573.2	573.3
145°	555.2	555.8	556.3	556.9	557.1	557.3	557.0	558.3	558.9	559.6	560.0
147.5°	542.5	543.3	543.5	544.0	544.2	544.4	544.3	545.2	546.0	546.6	547.2
150°	533.0	534.0	534.6	535.5	536.1	536.5	536.6	537.4	537.7	538.1	538.1
152.5°	523.8	524.6	525.2	525.9	526.5	526.8	527.0	527.7	528.3	528.8	528.9
155°	515.2	516.1	516.9	517.7	518.2	519.0	519.5	520.1	520.5	520.8	521.0
157.5°	508.1	509.1	509.7	510.5	511.1	512.0	512.5	513.2	513.6	514.2	514.4
160°	503.4	504.4	504.9	505.7	506.5	507.1	507.6	508.4	508.9	509.3	509.9
162.5°	501.1	501.9	502.4	503.2	503.8	504.6	505.1	505.7	506.4	506.9	507.3
165°	497.5	498.4	499.1	500.1	500.9	501.9	502.6	503.0	503.2	503.6	503.6
167.5°	498.9	499.8	500.5	501.4	502.0	503.0	503.7	504.1	504.2	504.5	504.6
170°	499.3	500.1	500.8	501.5	502.3	503.1	503.6	503.7	503.9	504.1	504.3
172.5°	499.3	500.3	501.0	502.0	502.7	503.6	504.3	504.4	504.2	504.1	503.8
175°	500.0	500.9	501.5	502.2	502.7	503.5	504.2	503.8	503.8	503.6	503.4
177.5°	504.5	505.4	506.1	506.7	507.6	508.3	509.0	508.4	507.9	507.3	506.6
180°	501.5	501.5	501.5	501.5	501.5	501.5	501.5	501.5	501.5	501.5	501.5



TEST NUMBER: P1444768
 CATALOG NUMBER: EHBR1-48-UNV-TA-L935-UPL40

CANDELA DISTRIBUTION (continued):

	192.5°	195°	197.5°	200°	202.5°	205°	207.5°	210°	212.5°	215°	217.5°
0°	37093.8	37093.8	37093.8	37093.8	37093.8	37093.8	37093.8	37093.8	37093.8	37093.8	37093.8
2.5°	37024.5	37043.0	37071.4	37097.0	37135.7	37166.2	37212.0	37246.8	37298.4	37332.1	37388.3
5°	37027.8	37100.2	37195.5	37288.5	37400.2	37501.6	37627.7	37735.1	37861.8	37965.2	38094.8
7.5°	37080.2	37219.9	37387.3	37555.9	37746.8	37925.3	38126.4	38308.4	38507.3	38675.7	38859.6
10°	37118.8	37334.2	37581.0	37829.3	38090.6	38333.4	38578.5	38790.3	38988.3	39151.2	39295.2
12.5°	37066.4	37363.2	37679.8	37985.6	38276.2	38527.5	38738.4	38901.3	39013.8	39090.1	39107.9
15°	36888.4	37245.5	37589.8	37894.3	38135.4	38321.4	38417.7	38462.7	38414.4	38334.1	38157.5
17.5°	36555.9	36932.5	37240.3	37480.5	37607.9	37658.4	37578.7	37439.9	37168.8	36867.9	36433.3
20°	35946.1	36297.1	36520.4	36651.4	36617.3	36491.3	36190.2	35824.2	35282.9	34706.2	33944.9
22.5°	34876.7	35183.6	35302.5	35312.2	35104.2	34788.6	34245.6	33617.9	32764.1	31876.3	30784.6
25°	33271.4	33540.2	33559.0	33453.4	33072.8	32561.2	31763.9	30876.0	29715.7	28532.9	27164.9
27.5°	31094.4	31352.2	31289.1	31092.1	30563.6	29879.1	28858.2	27711.2	26280.7	24883.7	23370.4
30°	28357.7	28633.4	28559.2	28306.6	27678.0	26869.0	25667.8	24335.1	22747.0	21254.9	19721.4
32.5°	25082.7	25431.1	25380.0	25139.8	24483.9	23618.1	22314.8	20901.3	19276.4	17806.0	16314.3
35°	21360.2	21783.3	21805.2	21648.1	21039.3	20183.5	18896.5	17528.3	15972.0	14584.6	13206.6
37.5°	17349.6	17840.1	17940.9	17898.5	17393.9	16638.5	15465.8	14238.4	12859.7	11643.8	10465.2
40°	13316.8	13813.4	13985.7	14036.8	13664.4	13079.2	12116.8	11126.2	10002.2	9016.9	8081.1
42.5°	9639.1	10079.3	10245.8	10350.6	10118.1	9727.9	9025.9	8306.4	7483.0	6772.4	6091.1
45°	6694.6	7005.9	7132.5	7238.0	7111.4	6891.3	6447.9	5998.0	5454.4	4990.1	4550.4
47.5°	4680.6	4852.3	4935.9	4987.0	4938.0	4823.1	4581.9	4321.2	4014.4	3743.0	3482.1
50°	3469.3	3560.7	3604.5	3634.0	3598.2	3534.4	3403.9	3262.0	3093.5	2939.8	2789.5
52.5°	2749.3	2801.7	2827.7	2843.6	2823.1	2784.2	2708.1	2624.0	2522.9	2428.0	2378.0
55°	2316.1	2313.4	2373.5	2344.5	2373.5	2308.8	2295.1	2202.7	2118.7	2059.6	1995.7
57.5°	1910.1	1937.3	1948.8	1961.7	1953.4	1941.5	1909.3	1876.1	1831.9	1794.9	1755.4
60°	1653.4	1675.8	1688.5	1701.3	1700.5	1696.0	1677.3	1657.5	1629.9	1607.7	1583.8
62.5°	1476.6	1496.0	1508.5	1520.7	1521.8	1520.0	1505.9	1492.2	1473.3	1459.5	1443.0
65°	1337.5	1351.1	1359.6	1369.4	1368.8	1366.2	1353.4	1342.0	1326.5	1316.9	1304.8
67.5°	1191.9	1202.2	1208.8	1218.0	1219.8	1220.4	1213.3	1208.0	1200.4	1197.7	1193.5
70°	1088.4	1100.9	1111.5	1123.1	1129.5	1132.5	1129.5	1126.7	1122.3	1120.4	1117.2
72.5°	1010.0	1020.6	1028.9	1039.5	1045.4	1049.6	1047.3	1045.7	1041.9	1041.4	1039.2
75°	912.7	920.0	924.6	932.6	935.8	939.8	938.0	939.0	937.7	940.8	940.6
77.5°	795.7	801.1	803.3	809.0	809.6	814.4	815.5	821.1	825.1	833.9	838.6
80°	664.0	667.4	667.4	673.3	675.9	684.1	687.9	697.1	701.4	709.2	709.9
82.5°	515.8	511.8	515.8	513.3	520.9	529.9	531.2	539.0	540.8	545.8	541.9
85°	352.7	352.4	349.2	349.8	347.4	348.5	347.1	348.7	347.2	347.4	343.9
87.5°	168.9	170.5	166.8	168.0	164.4	166.0	162.9	165.4	161.7	162.2	156.7
90°	45.5	46.8	47.7	49.0	50.8	54.4	58.1	61.7	65.9	69.5	73.4
92.5°	50.8	52.9	54.9	56.8	58.8	64.7	70.5	76.4	82.4	88.1	94.0
95°	58.3	60.0	61.7	63.7	65.4	73.9	82.4	90.8	99.3	107.8	116.3
97.5°	65.9	67.0	68.1	69.2	70.3	80.3	90.3	100.2	110.2	120.3	130.1
100°	75.9	77.1	78.4	79.9	81.2	104.2	127.2	150.2	173.2	196.0	219.1
102.5°	124.5	132.5	140.6	148.8	156.9	212.6	268.5	324.2	379.7	435.5	491.1
105°	286.2	313.3	340.8	367.9	395.0	479.4	563.8	648.2	732.4	816.6	901.1
107.5°	581.2	629.0	676.8	724.6	772.4	851.8	931.0	1010.4	1089.8	1169.0	1248.0
110°	891.6	932.6	974.1	1015.4	1056.6	1119.5	1182.6	1245.5	1308.6	1371.4	1434.3



TEST NUMBER: P1444768
 CATALOG NUMBER: EHBR1-48-UNV-TA-L935-UPL40

CANDELA DISTRIBUTION (continued):

	192.5°	195°	197.5°	200°	202.5°	205°	207.5°	210°	212.5°	215°	217.5°
112.5°	1072.9	1098.0	1123.1	1148.0	1173.2	1219.4	1265.9	1311.9	1358.2	1404.2	1450.3
115°	1120.2	1133.3	1146.7	1159.9	1173.3	1201.2	1229.1	1257.0	1284.9	1312.6	1340.6
117.5°	1088.7	1093.5	1098.4	1102.8	1107.6	1122.0	1136.4	1150.6	1165.0	1179.3	1193.5
120°	1010.8	1010.5	1010.2	1009.7	1009.4	1013.6	1018.4	1022.7	1027.2	1031.5	1035.8
122.5°	922.8	919.5	916.4	913.0	909.8	908.1	906.7	905.0	903.7	902.0	900.4
125°	839.6	836.2	833.0	829.5	826.0	822.0	818.1	814.0	809.9	805.9	801.8
127.5°	768.7	765.6	762.9	759.6	756.5	751.8	747.4	742.7	738.3	733.6	729.1
130°	709.9	707.7	705.8	703.1	701.0	696.8	693.1	688.9	684.9	680.9	676.9
132.5°	667.7	666.2	664.7	662.8	661.3	657.5	654.2	650.4	646.8	643.1	639.7
135°	635.2	634.2	633.4	632.3	631.3	628.3	625.7	622.9	620.2	617.5	614.8
137.5°	608.2	607.9	607.7	607.3	606.9	604.5	602.3	600.0	597.8	595.5	593.3
140°	591.2	591.0	590.7	590.4	590.0	587.6	585.2	582.8	580.4	577.9	575.5
142.5°	573.3	573.3	573.1	572.7	572.5	570.4	568.8	566.9	565.0	563.2	561.4
145°	560.3	560.4	560.7	560.5	560.7	558.3	556.3	553.9	552.0	549.7	547.6
147.5°	547.7	547.8	548.1	548.2	548.6	546.6	545.0	543.1	541.5	539.4	537.9
150°	538.4	538.5	538.5	538.4	538.3	536.3	534.6	532.7	531.0	528.9	527.3
152.5°	529.2	529.4	529.6	529.7	529.9	528.0	526.2	524.2	522.3	520.2	518.4
155°	521.3	521.4	521.6	521.6	521.6	519.9	518.1	516.2	514.5	512.6	510.9
157.5°	514.7	515.0	515.2	515.4	515.5	514.0	512.4	511.0	509.4	507.8	506.3
160°	510.2	510.5	510.8	511.0	511.3	510.0	508.9	507.4	506.4	504.7	503.3
162.5°	507.7	508.1	508.4	508.5	508.8	507.5	506.5	505.2	503.9	502.3	501.0
165°	504.0	503.9	504.1	504.0	504.1	503.2	502.5	501.6	500.7	499.7	498.9
167.5°	504.8	504.6	504.9	504.8	504.9	504.3	504.0	503.3	502.7	501.9	501.3
170°	504.4	504.4	504.5	504.3	504.4	503.7	503.3	502.7	502.3	501.3	500.7
172.5°	503.7	503.5	503.4	503.2	502.8	502.4	502.1	501.7	501.4	500.9	500.5
175°	503.1	502.7	502.7	502.4	502.0	502.0	501.7	501.7	501.4	501.2	500.9
177.5°	506.3	505.8	505.1	504.6	504.1	503.9	503.7	503.6	503.6	503.4	503.2
180°	501.5	501.5	501.5	501.5	501.5	501.5	501.5	501.5	501.5	501.5	501.5



TEST NUMBER: P1444768
 CATALOG NUMBER: EHBR1-48-UNV-TA-L935-UPL40

CANDELA DISTRIBUTION (continued):

	220°	222.5°	225°	227.5°	230°	232.5°	235°	237.5°	240°	242.5°	245°
0°	37093.8	37093.8	37093.8	37093.8	37093.8	37093.8	37093.8	37093.8	37093.8	37093.8	37093.8
2.5°	37423.1	37191.9	37161.4	37177.6	37216.2	37230.5	37272.2	37283.7	37325.5	37335.9	37376.1
5°	38195.2	37889.7	37905.0	37978.5	38089.7	38155.9	38265.2	38322.4	38426.7	38474.1	38568.5
7.5°	39009.5	38769.6	38844.4	38968.3	39120.2	39225.6	39356.9	39442.4	39555.6	39625.8	39716.3
10°	39409.3	39343.6	39425.9	39523.4	39610.1	39678.0	39733.6	39778.2	39807.3	39834.7	39846.7
12.5°	39105.0	39206.7	39220.8	39211.3	39153.8	39110.0	39011.4	38944.4	38825.5	38753.1	38611.6
15°	37977.2	38200.9	38077.0	37889.5	37615.1	37386.3	37063.2	36822.7	36486.3	36258.1	35920.5
17.5°	35997.9	36280.2	35957.4	35523.6	34971.6	34499.3	33911.4	33444.6	32860.0	32434.8	31889.2
20°	33211.3	33475.2	32899.6	32180.3	31326.5	30607.9	29760.5	29084.4	28297.0	27711.2	27004.3
22.5°	29741.9	29929.9	29118.9	28149.3	27061.4	26163.7	25150.6	24340.0	23441.4	22771.7	22018.0
25°	25903.7	25954.4	24981.6	23864.6	22652.2	21643.2	20561.5	19709.4	18792.8	18114.2	17374.3
27.5°	22029.7	21955.3	20903.8	19719.4	18444.1	17395.4	16340.4	15541.8	14739.2	14127.8	13490.4
30°	18373.1	18193.0	17101.3	15883.9	14645.9	13706.1	12830.2	12188.9	11550.3	11065.3	10553.7
32.5°	15020.0	14765.9	13703.2	12562.6	11519.5	10794.2	10144.7	9659.5	9143.8	8734.1	8304.8
35°	12050.0	11779.3	10837.9	9870.9	9081.4	8546.8	8036.3	7638.2	7200.3	6854.7	6481.9
37.5°	9501.1	9279.2	8490.7	7729.7	7132.5	6718.3	6300.0	5974.6	5612.8	5460.7	5062.3
40°	7334.8	7179.8	6563.2	6002.3	5553.8	5359.1	4934.6	4630.7	4360.3	4137.3	3921.3
42.5°	5721.3	5666.4	5066.3	4628.9	4313.1	4067.9	3831.2	3639.2	3452.2	3298.6	3153.4
45°	4198.6	4155.2	3888.7	3636.2	3421.0	3249.6	3089.8	2957.6	2835.4	2734.1	2641.9
47.5°	3269.4	3255.5	3102.1	2945.5	2810.0	2699.9	2596.1	2508.4	2427.2	2359.6	2337.6
50°	2659.2	2657.4	2567.4	2470.7	2374.2	2310.5	2244.3	2192.4	2140.3	2099.8	2056.9
52.5°	2259.4	2249.6	2188.9	2129.2	2071.9	2030.1	1987.8	1954.6	1920.1	1895.0	1868.4
55°	1945.2	1955.4	1920.2	1884.6	1848.7	1822.8	1793.1	1771.2	1747.6	1731.7	1715.7
57.5°	1726.8	1740.4	1722.0	1701.8	1680.0	1662.8	1642.4	1627.3	1611.5	1601.4	1592.1
60°	1568.0	1582.9	1575.5	1565.3	1551.8	1541.7	1528.6	1520.2	1510.0	1504.4	1499.2
62.5°	1433.3	1451.8	1449.2	1444.4	1435.8	1430.1	1423.0	1419.3	1412.5	1410.1	1407.6
65°	1298.9	1319.7	1319.3	1317.0	1312.2	1310.6	1306.1	1305.3	1301.9	1303.2	1302.9
67.5°	1193.1	1211.3	1215.3	1218.2	1218.0	1219.1	1218.7	1220.5	1220.5	1223.1	1224.7
70°	1116.9	1129.5	1132.5	1135.5	1136.4	1138.8	1138.8	1140.3	1139.9	1142.2	1142.4
72.5°	1039.7	1056.3	1059.4	1061.9	1061.9	1064.2	1062.9	1062.6	1059.2	1058.6	1056.2
75°	943.8	965.1	969.8	972.8	973.2	975.2	972.3	970.6	965.1	962.9	959.0
77.5°	843.5	865.6	869.0	870.1	868.3	868.7	862.6	858.6	851.5	848.6	844.9
80°	713.1	745.6	748.3	746.2	741.1	740.3	734.4	730.5	722.2	719.3	716.1
82.5°	542.6	580.9	586.2	588.6	584.4	585.4	579.7	577.5	569.8	568.4	563.4
85°	342.6	380.8	387.1	386.2	382.0	381.1	377.8	378.8	378.2	380.3	381.4
87.5°	157.4	194.4	203.3	200.5	200.0	197.4	191.5	193.7	197.3	199.6	199.8
90°	77.1	92.1	95.5	93.4	87.5	84.7	79.2	77.0	72.1	69.9	65.0
92.5°	99.9	105.7	111.6	106.3	101.1	95.9	90.7	85.3	80.3	74.9	69.9
95°	124.7	133.0	141.4	134.4	127.3	120.4	113.4	106.5	99.5	92.5	85.6
97.5°	140.1	149.8	159.6	152.6	145.7	138.7	131.7	124.8	117.8	110.7	103.8
100°	242.0	264.5	287.3	267.5	247.7	228.0	208.3	188.3	168.6	148.9	129.1
102.5°	546.7	602.2	657.6	607.5	557.6	507.5	457.5	407.6	357.6	307.4	257.6
105°	985.2	1069.0	1153.1	1076.5	1000.2	923.9	847.6	771.3	695.0	618.6	542.3
107.5°	1327.3	1405.6	1484.5	1415.4	1346.4	1277.4	1208.2	1139.3	1070.3	1001.2	932.3
110°	1497.1	1558.7	1621.3	1574.7	1528.5	1481.9	1435.7	1389.2	1343.0	1296.8	1250.6



TEST NUMBER: P1444768
 CATALOG NUMBER: EHBR1-48-UNV-TA-L935-UPL40

CANDELA DISTRIBUTION (continued):

	220°	222.5°	225°	227.5°	230°	232.5°	235°	237.5°	240°	242.5°	245°
112.5°	1496.3	1540.9	1586.4	1559.0	1532.0	1504.7	1477.6	1450.3	1423.4	1396.1	1369.4
115°	1368.1	1394.0	1421.2	1410.2	1399.5	1388.6	1377.7	1367.0	1356.2	1345.4	1335.0
117.5°	1207.7	1219.6	1233.2	1230.9	1228.9	1226.6	1224.6	1222.5	1220.6	1218.7	1216.8
120°	1040.1	1041.9	1045.5	1046.6	1048.0	1049.1	1050.4	1051.6	1053.0	1054.3	1055.8
122.5°	898.7	894.4	891.8	892.9	893.9	894.9	896.1	897.1	898.3	899.5	900.9
125°	797.8	790.5	785.4	783.3	781.4	779.3	777.1	775.1	773.2	771.2	769.4
127.5°	724.3	716.5	711.0	706.5	702.0	697.3	692.8	688.3	683.9	679.3	675.0
130°	672.9	665.4	660.4	654.6	649.2	643.3	637.9	632.3	626.5	620.9	615.4
132.5°	636.0	628.5	624.0	618.7	613.4	607.9	602.5	597.0	591.6	585.9	580.7
135°	612.0	605.2	601.6	596.5	591.9	586.8	581.9	576.9	572.1	566.8	562.3
137.5°	590.9	584.3	581.2	577.2	573.4	569.4	565.6	561.4	557.4	553.1	549.3
140°	573.2	566.2	562.9	560.7	558.5	555.9	553.8	551.3	549.1	546.7	544.3
142.5°	559.5	552.9	550.0	548.5	547.2	545.5	544.3	542.7	541.3	539.4	537.9
145°	545.5	538.2	535.0	534.6	534.6	534.3	534.1	533.8	533.6	533.2	532.9
147.5°	535.9	528.4	525.3	525.6	525.8	525.9	526.2	526.1	526.5	526.6	526.8
150°	525.3	516.7	513.2	513.8	514.2	514.8	515.3	515.8	516.5	517.0	517.5
152.5°	516.2	506.1	502.1	502.7	503.6	504.0	504.7	505.5	506.3	507.1	507.7
155°	508.7	497.8	493.5	493.5	493.9	494.0	494.4	494.9	495.3	495.7	496.2
157.5°	504.5	493.0	488.9	488.5	488.7	488.7	488.9	489.1	489.3	489.5	490.1
160°	501.9	490.5	486.5	486.2	486.2	486.2	486.2	486.2	486.4	486.6	487.1
162.5°	499.5	488.3	484.4	484.1	484.0	483.9	483.9	483.8	484.0	484.0	484.4
165°	497.8	488.1	484.6	484.5	484.7	484.6	484.8	485.0	485.3	485.5	486.0
167.5°	500.4	491.8	489.1	488.6	488.2	487.8	487.8	487.2	487.2	487.0	487.0
170°	499.8	493.0	490.6	490.5	490.8	490.7	490.6	490.8	490.8	490.7	491.0
172.5°	500.0	495.0	493.2	493.5	493.9	494.2	494.7	494.9	495.4	495.8	496.2
175°	500.7	497.8	497.0	496.9	497.2	497.4	497.7	497.8	498.1	498.3	498.8
177.5°	503.2	502.2	501.7	501.7	501.7	501.7	501.7	501.7	501.7	501.9	501.9
180°	501.5	501.5	501.5	501.5	501.5	501.5	501.5	501.5	501.5	501.5	501.5



TEST NUMBER: P1444768
 CATALOG NUMBER: EHBR1-48-UNV-TA-L935-UPL40

CANDELA DISTRIBUTION (continued):

	247.5°	250°	252.5°	255°	257.5°	260°	262.5°	265°	267.5°	270°	272.5°
0°	37093.8	37093.8	37093.8	37093.8	37093.8	37093.8	37093.8	37093.8	37093.8	37093.8	37093.8
2.5°	37383.7	37427.3	37424.0	37464.7	37462.7	37501.0	37493.3	37526.4	37518.9	37547.1	37530.5
5°	38610.0	38692.9	38720.2	38795.1	38810.6	38877.5	38878.9	38932.1	38925.7	38967.3	38945.1
7.5°	39770.0	39847.4	39884.1	39942.2	39971.3	40019.3	40038.2	40077.8	40087.3	40110.7	40110.0
10°	39867.9	39867.6	39885.7	39877.7	39893.9	39884.5	39904.3	39897.2	39926.4	39918.9	39941.0
12.5°	38550.6	38419.8	38372.2	38254.7	38229.1	38128.3	38135.4	38070.8	38102.0	38062.3	38129.9
15°	35719.6	35416.4	35266.4	35002.8	34920.0	34711.6	34694.7	34556.2	34593.7	34521.3	34627.1
17.5°	31536.1	31058.6	30796.6	30411.6	30258.7	29964.0	29904.9	29726.7	29754.3	29664.5	29792.4
20°	26548.3	25971.3	25640.8	25195.6	24996.9	24645.5	24552.3	24353.0	24378.0	24288.6	24433.3
22.5°	21503.6	20899.6	20526.5	20059.8	19806.2	19475.7	19376.5	19176.2	19187.6	19103.8	19242.9
25°	16867.6	16288.6	15926.5	15502.5	15282.4	14979.4	14875.2	14695.4	14705.6	14636.4	14761.3
27.5°	13048.3	12573.2	12270.2	11914.9	11717.6	11468.5	11366.9	11215.6	11215.3	11164.5	11268.8
30°	10196.6	9800.1	9528.1	9218.6	9033.3	8808.5	8710.4	8575.1	8569.2	8533.2	8616.0
32.5°	7983.7	7631.0	7382.9	7110.6	6944.2	6751.3	6658.4	6549.7	6539.8	6507.2	6575.2
35°	6206.3	5909.4	5695.9	5466.6	5483.6	5199.0	5246.3	5025.2	4965.3	4952.2	5002.8
37.5°	4796.7	4566.7	4393.4	4221.7	4105.4	3985.1	3920.3	3862.2	3855.6	3850.0	3885.4
40°	3754.6	3593.6	3467.5	3349.7	3269.7	3196.3	3155.7	3123.8	3116.2	3112.0	3133.5
42.5°	3038.7	2930.2	2848.9	2777.0	2728.3	2688.4	2666.1	2648.5	2642.5	2642.7	2655.3
45°	2567.4	2501.5	2449.1	2404.4	2373.3	2387.0	2346.8	2367.9	2340.1	2368.8	2349.8
47.5°	2260.9	2204.8	2172.4	2140.7	2121.9	2106.8	2107.3	2107.6	2113.6	2114.5	2120.6
50°	2024.5	1992.0	1969.5	1949.2	1939.5	1931.5	1934.3	1936.3	1942.1	1942.5	1947.1
52.5°	1849.5	1828.2	1814.6	1802.0	1797.6	1793.1	1795.0	1794.2	1796.8	1795.4	1799.2
55°	1707.0	1697.0	1692.8	1688.0	1688.8	1687.5	1688.3	1683.8	1681.1	1677.6	1680.8
57.5°	1590.2	1588.8	1591.7	1593.6	1598.9	1600.8	1602.1	1596.9	1592.0	1587.4	1590.1
60°	1500.2	1502.3	1509.5	1515.2	1522.9	1526.5	1528.7	1525.7	1522.1	1518.4	1520.6
62.5°	1411.3	1414.8	1423.3	1429.7	1439.1	1443.9	1449.2	1449.5	1450.9	1449.5	1451.0
65°	1308.2	1312.5	1320.2	1325.5	1334.2	1338.5	1343.9	1344.9	1347.9	1347.3	1349.9
67.5°	1229.8	1233.7	1240.1	1245.2	1252.9	1257.4	1262.2	1262.4	1263.5	1263.2	1265.7
70°	1146.2	1148.1	1153.9	1158.2	1165.9	1170.4	1176.0	1177.6	1181.0	1181.6	1184.3
72.5°	1057.1	1056.3	1059.8	1061.7	1067.5	1071.1	1078.1	1081.9	1087.7	1089.2	1091.3
75°	960.1	959.3	963.4	965.1	970.0	973.6	981.5	986.5	995.4	999.1	998.2
77.5°	847.8	849.7	857.4	861.6	868.3	872.8	883.0	891.1	907.5	914.6	907.3
80°	722.2	724.2	732.2	736.2	744.8	750.3	761.8	771.2	786.0	789.1	785.0
82.5°	567.7	568.4	575.4	578.5	589.7	597.9	612.3	619.8	628.9	627.5	626.5
85°	387.1	392.3	401.3	410.2	424.0	437.1	450.8	462.0	454.1	466.6	452.5
87.5°	206.9	206.4	218.4	216.5	235.7	246.9	258.8	264.4	270.7	269.5	269.5
90°	63.3	59.9	59.7	56.0	56.7	52.8	54.5	50.8	53.2	48.8	55.5
92.5°	64.4	61.8	58.8	56.2	53.2	50.5	47.5	44.7	41.9	39.1	41.9
95°	78.7	76.0	73.5	70.8	68.2	65.6	63.0	60.4	57.8	55.2	58.5
97.5°	96.8	95.3	93.7	92.3	90.7	89.2	87.6	86.2	84.6	83.0	85.2
100°	109.3	109.3	109.3	109.3	109.0	109.0	109.0	109.0	109.0	109.0	110.8
102.5°	207.5	202.5	197.5	192.3	187.3	182.3	177.3	172.3	167.3	162.3	169.7
105°	466.0	446.5	426.9	407.4	387.6	368.2	348.6	329.1	309.5	290.0	310.2
107.5°	863.6	827.8	792.1	756.5	720.7	685.2	649.6	613.9	578.4	542.8	574.7
110°	1204.2	1166.4	1128.5	1090.7	1052.9	1014.9	977.2	939.4	901.7	863.9	894.3



TEST NUMBER: P1444768
 CATALOG NUMBER: EHBR1-48-UNV-TA-L935-UPL40

CANDELA DISTRIBUTION (continued):

	247.5°	250°	252.5°	255°	257.5°	260°	262.5°	265°	267.5°	270°	272.5°
112.5°	1342.4	1317.6	1293.2	1268.8	1244.3	1219.9	1195.5	1171.2	1147.0	1122.7	1137.4
115°	1324.2	1312.5	1300.8	1289.2	1277.5	1265.8	1254.2	1242.7	1231.2	1219.6	1220.6
117.5°	1214.9	1210.9	1206.9	1203.0	1199.0	1195.1	1191.3	1187.7	1183.8	1180.2	1172.0
120°	1057.4	1058.4	1059.4	1060.6	1061.9	1063.3	1064.4	1065.8	1067.4	1068.9	1057.9
122.5°	902.3	904.8	907.5	910.3	913.2	916.2	919.2	922.5	925.7	929.0	917.9
125°	767.4	770.0	772.6	775.3	777.8	781.0	784.0	787.2	790.3	793.8	784.4
127.5°	670.7	671.4	672.0	672.9	673.8	675.0	676.3	677.6	679.1	680.8	674.9
130°	609.8	608.5	607.1	606.1	604.7	604.0	603.3	602.6	602.1	601.7	599.2
132.5°	575.2	572.6	569.9	567.3	564.8	562.7	560.5	558.7	556.8	555.2	554.4
135°	557.0	553.4	549.9	546.5	543.1	540.2	536.9	534.4	531.7	529.1	529.7
137.5°	545.2	541.8	538.2	534.9	531.5	528.7	525.4	522.7	520.1	517.6	518.7
140°	541.8	538.3	534.6	531.5	528.3	525.2	522.2	519.7	516.7	514.5	515.2
142.5°	536.3	533.4	529.9	527.0	524.0	521.3	518.7	516.3	513.6	511.6	512.3
145°	532.6	530.3	527.8	525.5	523.4	521.5	519.2	517.6	515.9	514.5	514.9
147.5°	526.7	525.1	523.1	521.6	519.8	518.4	516.9	515.7	514.3	513.3	513.5
150°	518.1	517.0	515.8	514.7	513.6	512.7	511.8	511.0	510.2	509.5	509.5
152.5°	508.5	507.6	506.5	505.6	504.6	503.8	503.0	502.5	501.7	501.1	501.1
155°	496.7	496.2	495.8	495.6	495.1	495.0	494.6	494.7	494.3	494.3	494.4
157.5°	490.2	490.3	490.1	490.2	490.1	490.2	490.1	490.5	490.3	490.7	491.0
160°	487.5	487.3	487.1	487.1	486.9	486.7	486.7	486.7	486.7	486.6	487.1
162.5°	484.6	485.0	485.2	485.4	485.8	486.1	486.5	487.1	487.3	487.9	488.3
165°	486.4	486.4	486.2	486.2	486.4	486.4	486.5	487.0	487.0	487.3	487.9
167.5°	486.9	487.2	487.3	487.6	488.0	488.5	488.8	489.4	490.0	490.7	491.1
170°	490.9	490.9	490.9	490.9	490.9	491.1	491.3	491.4	491.6	492.0	492.3
172.5°	496.5	496.5	496.2	496.5	496.2	496.5	496.5	496.7	496.7	496.8	497.0
175°	498.8	499.2	499.5	499.8	499.8	500.1	500.3	500.5	500.7	501.1	501.1
177.5°	501.9	502.0	502.0	502.0	502.0	502.2	502.2	502.2	502.2	502.0	502.2
180°	501.5	501.5	501.5	501.5	501.5	501.5	501.5	501.5	501.5	501.5	501.5



TEST NUMBER: P1444768
 CATALOG NUMBER: EHBR1-48-UNV-TA-L935-UPL40

CANDELA DISTRIBUTION (continued):

	275°	277.5°	280°	282.5°	285°	287.5°	290°	292.5°	295°	297.5°	300°
0°	37093.8	37093.8	37093.8	37093.8	37093.8	37093.8	37093.8	37093.8	37093.8	37093.8	37093.8
2.5°	37558.2	37539.3	37558.6	37539.1	37558.6	37535.2	37551.0	37525.7	37532.2	37505.9	37512.7
5°	38978.3	38948.3	38964.3	38925.4	38929.5	38877.5	38876.5	38816.1	38800.1	38731.2	38701.0
7.5°	40126.6	40116.8	40122.4	40097.3	40094.5	40058.9	40042.1	39992.0	39960.5	39897.2	39853.8
10°	39944.8	39974.1	39981.7	40011.5	40017.7	40047.2	40053.5	40083.0	40089.2	40111.0	40111.3
12.5°	38126.7	38226.2	38249.9	38372.7	38424.4	38564.8	38640.3	38795.1	38887.0	39041.4	39136.2
15°	34624.2	34796.1	34864.8	35104.6	35237.2	35517.0	35693.0	36014.3	36241.2	36582.5	36826.0
17.5°	29803.6	30044.0	30152.5	30477.6	30689.7	31102.8	31400.6	31890.6	32265.9	32810.5	33242.2
20°	24458.0	24725.1	24872.3	25243.3	25493.6	25976.3	26348.0	26950.2	27452.4	28142.6	28732.7
22.5°	19286.5	19540.7	19704.1	20081.5	20363.3	20866.8	21282.2	21917.8	22480.6	23258.2	23965.9
25°	14808.4	15041.3	15189.1	15530.4	15795.1	16257.6	16654.4	17265.8	17816.3	18596.4	19321.9
27.5°	11320.9	11515.9	11658.4	11949.4	12182.8	12575.1	12915.9	13421.2	13895.6	14570.4	15216.5
30°	8667.0	8840.0	8978.5	9232.0	9448.5	9788.5	10088.3	10512.6	10905.2	11442.2	11956.3
32.5°	6623.1	6772.0	6895.4	7117.3	7313.6	7619.9	7889.9	8261.9	8598.9	9054.3	9477.2
35°	5049.8	5342.8	5322.1	5628.0	5677.2	5897.1	6137.9	6463.2	6761.7	7148.9	7508.8
37.5°	3919.5	4001.9	4090.1	4225.4	4367.5	4567.5	4771.0	5168.4	5314.2	5606.9	5904.8
40°	3160.6	3216.4	3274.7	3366.0	3465.6	3606.5	3754.6	3944.3	4138.5	4375.8	4618.2
42.5°	2672.0	2703.6	2740.6	2794.4	2855.8	2945.1	3044.3	3172.8	3307.9	3475.0	3645.4
45°	2387.4	2372.4	2383.4	2412.3	2449.3	2503.6	2566.1	2645.7	2733.7	2841.9	2957.1
47.5°	2121.9	2128.0	2131.2	2146.9	2166.8	2203.2	2241.1	2295.1	2399.5	2431.2	2494.0
50°	1946.6	1949.5	1948.5	1956.5	1966.6	1990.2	2014.9	2051.4	2087.9	2136.3	2182.5
52.5°	1799.7	1803.8	1803.2	1808.5	1813.8	1828.8	1844.4	1870.2	1894.1	1925.0	1951.4
55°	1683.7	1689.3	1691.5	1695.9	1698.5	1706.3	1712.5	1724.9	1735.1	1752.5	1768.6
57.5°	1594.4	1602.1	1605.7	1607.2	1604.0	1603.7	1601.6	1604.2	1606.3	1615.6	1624.7
60°	1524.2	1530.3	1531.3	1530.3	1524.6	1520.5	1513.8	1511.8	1510.7	1515.2	1520.2
62.5°	1450.7	1452.8	1451.3	1449.5	1443.0	1439.0	1432.1	1429.6	1427.3	1430.5	1433.0
65°	1348.9	1350.8	1348.9	1347.8	1341.9	1338.7	1332.9	1331.0	1327.7	1328.6	1328.0
67.5°	1266.2	1268.2	1266.7	1265.1	1261.1	1259.2	1254.9	1252.1	1248.1	1246.7	1243.8
70°	1183.9	1185.5	1183.1	1181.6	1177.0	1175.1	1171.2	1170.3	1167.2	1166.4	1163.3
72.5°	1089.2	1089.3	1086.1	1085.1	1081.6	1081.5	1079.9	1081.3	1081.3	1082.9	1082.2
75°	992.2	990.9	986.8	986.1	983.5	984.7	982.9	985.3	985.5	989.2	989.5
77.5°	895.3	890.1	882.3	878.6	873.3	872.7	869.6	871.7	871.1	875.2	876.8
80°	772.6	766.4	756.4	751.5	745.4	744.5	741.6	744.5	743.0	747.9	751.3
82.5°	616.8	611.5	601.1	597.2	590.0	590.7	587.7	590.7	590.3	597.5	601.6
85°	456.2	452.7	442.0	432.5	421.9	415.7	409.7	408.6	406.8	409.7	412.1
87.5°	263.6	260.2	251.9	246.3	227.8	228.6	221.3	221.0	219.2	217.5	221.3
90°	55.0	60.8	60.6	66.0	66.3	72.3	73.1	78.9	79.2	85.1	86.3
92.5°	44.7	47.5	50.3	53.2	56.0	58.8	61.6	64.4	70.5	76.3	82.7
95°	61.7	65.0	68.2	71.4	74.7	77.9	81.2	84.5	93.4	102.2	111.1
97.5°	87.5	89.5	91.7	93.9	96.1	98.2	100.4	102.6	112.2	121.8	131.3
100°	112.5	114.2	115.9	117.7	119.5	121.2	122.9	124.6	143.4	161.8	180.3
102.5°	177.1	184.4	191.9	199.2	206.8	214.2	221.6	228.9	271.4	313.8	356.1
105°	330.4	350.6	371.0	391.1	411.3	431.5	451.7	471.9	539.8	607.5	675.5
107.5°	606.6	638.5	670.4	702.4	734.3	766.3	798.2	830.3	896.4	962.6	1028.8
110°	924.6	955.2	985.5	1016.1	1046.4	1077.0	1107.4	1138.1	1177.9	1217.6	1257.3



TEST NUMBER: P1444768
 CATALOG NUMBER: EHBR1-48-UNV-TA-L935-UPL40

CANDELA DISTRIBUTION (continued):

	275°	277.5°	280°	282.5°	285°	287.5°	290°	292.5°	295°	297.5°	300°
112.5°	1152.3	1167.0	1181.9	1196.8	1211.8	1226.7	1241.7	1256.7	1276.7	1296.4	1316.4
115°	1221.5	1222.4	1223.5	1224.5	1225.6	1226.6	1228.0	1229.2	1235.6	1241.9	1248.3
117.5°	1163.8	1155.8	1147.8	1139.7	1131.7	1124.0	1116.2	1108.5	1107.4	1106.2	1105.2
120°	1047.3	1036.3	1025.5	1014.5	1004.0	993.3	983.0	972.6	967.3	962.2	957.0
122.5°	907.1	896.4	885.7	875.0	864.5	854.1	843.9	833.6	830.0	826.4	822.9
125°	775.4	766.4	757.5	748.7	740.2	731.7	723.3	714.9	714.9	714.8	715.1
127.5°	669.5	664.1	658.7	653.6	648.7	643.6	638.9	634.0	636.6	639.2	641.9
130°	596.8	594.6	592.6	590.2	588.7	586.8	585.1	583.4	587.9	592.1	596.6
132.5°	554.3	553.9	553.9	553.9	554.1	554.3	554.9	555.1	560.2	565.0	570.2
135°	530.5	531.2	532.4	533.4	534.9	536.1	537.7	539.0	544.0	548.5	553.5
137.5°	519.9	521.0	522.5	524.0	525.9	527.6	529.6	531.3	535.2	539.0	542.8
140°	516.2	517.1	518.4	519.7	521.1	522.5	524.3	525.7	529.1	531.9	535.0
142.5°	513.5	514.2	515.4	516.7	518.1	519.3	520.9	522.1	524.5	526.7	529.3
145°	515.7	516.2	517.3	518.1	519.2	520.2	521.4	522.4	524.0	525.4	526.9
147.5°	514.1	514.4	515.2	515.9	516.7	517.3	518.1	518.7	519.9	520.9	521.9
150°	509.8	510.0	510.4	510.5	511.2	511.7	512.3	512.6	513.4	514.3	515.3
152.5°	501.5	501.6	501.8	502.1	502.5	502.8	503.2	503.6	504.6	505.2	506.1
155°	494.9	495.4	495.9	496.4	497.0	497.3	498.0	498.4	499.1	499.7	500.4
157.5°	491.5	491.8	492.5	492.8	493.5	493.9	494.4	494.9	495.5	495.9	496.5
160°	487.9	488.7	489.2	490.1	490.8	491.4	492.2	493.0	493.5	493.9	494.5
162.5°	488.9	489.4	490.0	490.3	490.9	491.4	491.9	492.4	493.3	493.9	494.7
165°	488.7	489.3	490.1	490.7	491.6	492.3	493.0	493.8	494.1	494.7	495.1
167.5°	492.0	492.4	493.4	493.9	494.8	495.4	496.2	496.8	497.3	497.6	498.1
170°	493.0	493.6	494.3	494.9	495.6	496.0	496.8	497.3	498.0	498.6	499.3
172.5°	497.6	498.0	498.6	498.8	499.4	500.0	500.6	500.8	501.5	502.0	502.5
175°	501.1	501.1	501.2	501.4	501.5	501.5	501.7	501.9	502.0	502.2	502.3
177.5°	502.5	502.7	502.8	503.1	503.3	503.5	503.7	503.9	503.9	503.9	503.9
180°	501.5	501.5	501.5	501.5	501.5	501.5	501.5	501.5	501.5	501.5	501.5



TEST NUMBER: P1444768
 CATALOG NUMBER: EHBR1-48-UNV-TA-L935-UPL40

CANDELA DISTRIBUTION (continued):

	302.5°	305°	307.5°	310°	312.5°	315°	317.5°	320°	322.5°	325°	327.5°
0°	37093.8	37093.8	37093.8	37093.8	37093.8	37093.8	37093.8	37093.8	37093.8	37093.8	37093.8
2.5°	37486.4	37488.0	37457.8	37456.1	37427.9	37424.2	37396.6	37388.3	37365.9	37357.7	37334.9
5°	38623.8	38586.9	38501.8	38451.7	38367.6	38311.9	38220.9	38161.5	38073.7	38007.5	37919.0
7.5°	39774.0	39716.8	39621.3	39543.9	39427.1	39334.0	39197.4	39085.5	38937.6	38809.6	38654.2
10°	40111.3	40102.5	40078.2	40042.7	39988.4	39927.4	39834.4	39737.5	39607.9	39467.1	39294.4
12.5°	39281.3	39370.9	39493.1	39565.5	39653.7	39692.3	39728.5	39719.4	39695.6	39624.4	39524.6
15°	37178.6	37430.5	37763.9	38022.4	38319.8	38535.8	38774.6	38923.3	39071.6	39140.1	39182.0
17.5°	33833.7	34310.6	34908.6	35404.2	35976.0	36435.2	36938.7	37317.7	37707.5	37986.7	38239.2
20°	29537.3	30228.2	31073.9	31821.1	32689.9	33444.9	34272.3	34951.5	35651.9	36199.7	36718.0
22.5°	24877.0	25697.6	26720.1	27667.3	28787.4	29793.9	30929.6	31918.0	32950.0	33812.2	34645.9
25°	20294.4	21194.3	22312.5	23369.2	24637.7	25808.5	27155.3	28387.3	29721.2	30879.3	32023.3
27.5°	16109.9	16993.4	18134.9	19259.9	20601.1	21848.7	23291.8	24649.1	26167.9	27568.4	29001.3
30°	12670.6	13419.9	14443.4	15533.0	16856.0	18125.5	19584.2	20980.2	22560.2	24089.4	25703.2
32.5°	10038.5	10609.4	11414.0	12335.4	13556.1	14764.6	16153.6	17501.1	19057.0	20601.9	22280.3
35°	7972.4	8417.7	9031.2	9750.2	10783.9	11825.7	13054.2	14279.7	15731.2	17197.1	18828.5
37.5°	6286.7	6647.9	7128.5	7668.5	8497.7	9352.6	10360.1	11376.0	12637.3	13936.7	15415.2
40°	4909.2	5201.8	5575.8	5978.6	6604.7	7263.4	8042.5	8830.4	9843.7	10905.7	12129.3
42.5°	3856.5	4072.4	4336.6	4631.0	5215.1	5564.8	6093.2	6663.0	7407.9	8178.9	9098.8
45°	3097.1	3244.4	3427.6	3625.0	3896.1	4192.9	4554.7	4934.1	5641.8	5988.9	6548.4
47.5°	2586.4	2685.3	2801.8	2926.3	3086.1	3258.7	3473.3	3692.7	3976.4	4270.5	4615.3
50°	2242.4	2343.0	2383.0	2447.5	2540.0	2638.5	2759.5	2880.5	3032.7	3186.9	3364.4
52.5°	1987.2	2019.9	2063.4	2104.5	2161.8	2274.0	2310.2	2373.5	2458.9	2542.3	2635.5
55°	1792.3	1813.6	1841.8	1866.6	1901.3	1934.4	1982.2	2024.3	2081.2	2131.5	2193.4
57.5°	1640.5	1654.1	1673.7	1689.9	1712.4	1731.1	1759.1	1781.9	1814.7	1843.1	1880.6
60°	1530.2	1539.3	1552.5	1563.1	1577.4	1587.2	1601.0	1611.7	1629.0	1643.5	1664.4
62.5°	1440.2	1444.9	1453.5	1459.7	1468.8	1473.7	1481.1	1485.8	1495.3	1502.6	1514.3
65°	1332.1	1333.2	1339.0	1341.6	1348.8	1351.3	1357.4	1359.6	1367.5	1372.8	1383.1
67.5°	1243.6	1241.1	1241.2	1239.2	1240.1	1238.0	1238.7	1236.4	1239.6	1241.2	1249.1
70°	1162.7	1159.3	1158.2	1154.5	1153.4	1149.6	1148.5	1145.1	1144.6	1143.5	1146.2
72.5°	1084.0	1083.1	1083.3	1080.7	1080.4	1077.8	1077.9	1076.3	1078.1	1078.9	1082.4
75°	993.4	993.7	995.4	993.2	993.8	991.6	992.4	990.3	991.4	991.1	994.6
77.5°	883.1	885.8	890.6	889.6	891.1	888.7	889.7	886.8	887.7	885.8	887.1
80°	759.1	764.7	771.1	770.8	773.6	771.7	774.3	771.5	772.6	769.3	768.5
82.5°	611.9	616.6	623.5	623.7	629.8	630.9	637.6	637.3	641.6	638.9	636.9
85°	418.4	421.5	427.5	430.9	437.0	440.8	447.4	450.0	445.3	453.8	447.1
87.5°	218.4	226.6	222.1	232.6	230.1	240.8	238.5	248.4	246.5	255.0	254.0
90°	93.6	95.3	103.0	105.1	114.1	117.1	120.3	116.6	119.5	116.1	119.1
92.5°	88.5	94.9	101.0	107.0	113.1	119.4	113.6	107.9	102.2	96.8	91.0
95°	120.0	129.0	137.9	146.7	155.6	164.5	155.0	145.5	135.9	126.4	116.8
97.5°	140.8	150.5	160.0	169.5	179.3	188.8	177.5	166.2	154.9	143.7	132.4
100°	198.7	217.2	235.6	254.1	272.7	291.2	270.3	249.1	228.3	207.3	186.2
102.5°	398.7	440.9	483.3	525.9	568.2	610.6	566.1	521.7	476.9	432.3	387.6
105°	743.3	811.2	879.0	946.8	1014.6	1082.8	1010.4	938.1	865.7	793.5	721.1
107.5°	1095.0	1161.0	1227.4	1293.5	1359.8	1426.2	1352.9	1279.6	1206.3	1132.9	1059.5
110°	1297.2	1337.0	1376.9	1416.8	1456.6	1496.6	1443.1	1389.6	1336.1	1282.5	1229.0



TEST NUMBER: P1444768
 CATALOG NUMBER: EHBR1-48-UNV-TA-L935-UPL40

CANDELA DISTRIBUTION (continued):

	302.5°	305°	307.5°	310°	312.5°	315°	317.5°	320°	322.5°	325°	327.5°
112.5°	1336.3	1356.6	1376.4	1396.6	1416.5	1436.6	1398.5	1360.4	1322.0	1283.9	1245.6
115°	1254.9	1261.2	1267.8	1274.4	1280.7	1287.3	1261.5	1236.0	1210.2	1184.5	1158.6
117.5°	1104.2	1103.4	1102.3	1101.6	1100.4	1099.5	1085.1	1070.9	1056.4	1042.0	1027.6
120°	951.7	946.6	941.5	936.3	931.1	925.8	919.9	914.1	907.9	901.8	895.6
122.5°	819.4	816.0	812.4	809.0	805.2	801.6	799.4	797.4	794.9	792.8	790.2
125°	715.1	715.2	715.2	715.3	715.2	715.2	714.0	713.1	711.9	711.0	709.7
127.5°	644.2	646.9	649.3	651.8	654.2	656.6	656.4	656.5	656.2	656.0	655.7
130°	600.7	605.3	609.4	613.6	617.6	622.0	621.3	620.8	620.4	619.8	619.2
132.5°	575.1	580.0	584.8	589.8	594.5	599.3	598.5	598.0	597.0	596.5	595.6
135°	558.1	562.7	567.2	572.1	576.3	580.9	579.9	579.1	577.9	577.2	576.2
137.5°	546.3	550.4	553.9	557.6	561.1	564.8	563.6	562.8	561.7	561.0	559.8
140°	537.9	541.0	543.7	546.8	549.5	552.5	551.1	550.0	548.6	547.3	546.0
142.5°	531.4	533.7	535.7	538.1	540.1	542.3	540.3	538.5	536.7	534.9	533.1
145°	528.4	530.1	531.5	532.9	533.9	535.5	533.3	531.3	528.9	526.9	524.6
147.5°	522.7	523.8	524.4	525.4	525.9	526.9	524.8	522.8	520.7	518.4	516.3
150°	515.9	517.0	517.6	518.3	519.0	519.9	517.5	515.4	513.1	510.8	508.7
152.5°	506.9	507.6	508.4	508.9	509.6	510.2	508.0	506.1	503.8	501.7	499.5
155°	500.7	501.3	501.6	502.1	502.3	502.7	500.7	499.2	497.4	495.6	493.6
157.5°	496.8	497.4	497.8	498.1	498.4	498.8	497.4	496.1	494.7	493.4	491.9
160°	494.9	495.3	495.7	495.9	496.4	496.5	495.4	494.4	493.3	492.0	490.7
162.5°	495.2	495.9	496.5	496.9	497.7	498.1	496.8	495.5	494.1	492.8	491.2
165°	495.5	495.9	496.4	496.8	496.9	497.3	496.4	495.6	494.5	493.7	492.7
167.5°	498.4	499.0	499.3	499.7	499.8	500.1	499.1	498.5	497.4	496.4	495.3
170°	499.7	500.2	500.7	501.2	501.7	501.9	501.3	500.7	499.7	499.0	498.1
172.5°	502.9	503.5	503.6	504.1	504.4	504.8	504.1	503.3	502.5	501.7	500.7
175°	502.3	502.5	502.7	502.7	502.7	502.8	502.2	501.6	500.9	500.3	499.6
177.5°	503.9	503.9	503.9	503.8	503.8	503.8	503.4	502.9	502.6	502.1	501.5
180°	501.5	501.5	501.5	501.5	501.5	501.5	501.5	501.5	501.5	501.5	501.5



TEST NUMBER: P1444768
 CATALOG NUMBER: EHBR1-48-UNV-TA-L935-UPL40

CANDELA DISTRIBUTION (continued):

	330°	332.5°	335°	337.5°	340°	342.5°	345°	347.5°	350°	352.5°	355°
0°	37093.8	37093.8	37093.8	37093.8	37093.8	37093.8	37093.8	37093.8	37093.8	37093.8	37093.8
2.5°	37326.8	37310.6	37300.2	37286.8	37278.7	37268.3	37260.8	37254.4	37249.1	37244.3	37240.7
5°	37851.7	37768.2	37703.5	37633.3	37575.8	37518.3	37474.0	37437.3	37412.0	37393.1	37381.8
7.5°	38519.9	38367.2	38231.4	38088.4	37960.2	37834.3	37725.6	37632.0	37561.7	37516.2	37488.6
10°	39116.7	38912.2	38710.0	38497.2	38295.4	38099.7	37919.0	37760.1	37634.3	37550.8	37501.9
12.5°	39384.3	39210.1	39003.6	38772.5	38525.2	38274.9	38031.1	37811.1	37626.5	37502.6	37431.1
15°	39148.6	39077.1	38937.0	38757.6	38523.0	38264.2	37977.9	37708.7	37461.1	37300.5	37207.4
17.5°	38382.2	38482.0	38471.2	38402.7	38233.9	38016.2	37724.4	37422.1	37112.4	36897.7	36780.5
20°	37088.8	37402.6	37561.7	37643.4	37577.1	37435.9	37171.7	36864.8	36503.9	36223.7	36052.7
22.5°	35271.2	35825.2	36170.3	36422.9	36476.5	36428.4	36195.1	35903.2	35500.9	35164.0	34911.5
25°	32931.5	33743.0	34288.5	34716.1	34882.3	34925.1	34726.6	34436.4	33987.8	33595.4	33248.6
27.5°	30175.5	31229.9	31958.3	32533.0	32792.3	32904.8	32722.1	32426.0	31895.4	31427.0	30973.9
30°	27072.9	28323.9	29200.8	29889.8	30206.0	30354.7	30160.5	29830.1	29212.5	28648.9	28078.1
32.5°	23752.1	25121.0	26076.6	26824.9	27138.2	27278.0	27024.1	26652.9	25939.1	25275.2	24609.5
35°	20275.2	21657.0	22620.6	23349.0	23611.6	23695.9	23371.1	22942.1	22151.3	21422.5	20696.8
37.5°	16727.6	18013.1	18888.9	19542.6	19705.1	19719.6	19328.5	18854.5	18023.4	17304.8	16582.3
40°	13210.6	14294.7	15001.8	15525.1	15581.4	15531.1	15105.8	14628.9	13851.3	13207.6	12573.2
42.5°	9897.7	10716.1	11220.6	11579.2	11557.9	11458.4	11068.5	10658.5	10017.0	9526.7	9027.5
45°	7059.6	7599.1	7894.1	8103.9	8036.6	7941.9	7638.4	7351.0	6915.1	6598.3	6262.9
47.5°	4904.4	5548.7	5436.5	5846.7	5493.4	5726.7	5240.7	4972.7	4741.4	4573.1	4383.5
50°	3511.1	3658.8	3730.1	3778.8	3752.9	3717.0	3629.8	3551.6	3446.0	3368.9	3279.2
52.5°	2711.6	2785.3	2825.8	2855.0	2849.3	2836.3	2798.1	2763.4	2713.9	2681.3	2641.9
55°	2296.8	2297.9	2372.2	2340.3	2387.5	2332.3	2354.0	2292.8	2302.7	2250.1	2214.9
57.5°	1908.5	1938.8	1952.4	1965.6	1961.9	1959.6	1944.8	1937.5	1920.8	1915.7	1903.8
60°	1678.8	1694.7	1697.9	1704.0	1698.9	1697.0	1685.4	1681.3	1670.2	1668.1	1660.3
62.5°	1521.3	1529.4	1529.4	1529.4	1522.8	1516.5	1503.7	1497.0	1487.5	1485.4	1480.9
65°	1389.9	1398.3	1399.6	1401.4	1396.6	1391.7	1380.3	1373.1	1363.3	1359.6	1354.4
67.5°	1254.2	1263.2	1266.1	1270.7	1268.0	1267.0	1259.3	1256.4	1249.9	1248.4	1243.6
70°	1147.6	1151.3	1151.0	1150.9	1144.9	1139.5	1130.6	1126.3	1119.6	1118.2	1113.8
72.5°	1084.2	1086.9	1085.2	1082.9	1075.1	1067.1	1056.6	1048.9	1040.1	1034.7	1028.4
75°	995.1	998.5	996.2	994.8	987.7	982.6	974.1	969.9	963.7	961.9	957.6
77.5°	885.5	887.1	883.6	883.1	877.8	874.5	868.2	867.1	862.6	862.6	858.6
80°	763.5	762.6	756.8	755.7	750.3	749.0	744.0	744.3	740.7	742.2	739.3
82.5°	628.3	624.8	617.3	615.0	608.9	608.3	605.1	607.8	605.6	608.9	607.0
85°	450.3	451.2	447.9	447.9	446.1	446.6	446.4	448.5	448.7	451.7	451.6
87.5°	251.1	254.6	254.0	257.2	257.0	260.8	262.0	267.5	268.2	273.3	273.3
90°	115.7	119.2	115.6	119.3	117.8	122.7	122.2	127.0	125.8	129.9	127.5
92.5°	85.4	79.7	74.2	68.4	65.6	62.5	60.2	56.8	54.3	51.2	48.3
95°	107.3	97.8	88.2	78.7	75.4	72.1	68.8	65.5	62.4	59.1	55.8
97.5°	121.2	109.8	98.6	87.3	84.5	81.7	78.8	76.0	73.1	70.2	67.4
100°	165.1	144.1	123.2	102.0	99.6	97.2	94.8	92.4	90.0	87.5	85.1
102.5°	343.1	298.4	253.7	209.0	200.6	192.1	183.6	175.0	166.5	158.1	149.6
105°	648.8	576.2	503.9	431.4	408.4	385.4	362.4	339.3	316.3	293.3	270.4
107.5°	986.1	912.5	839.1	765.5	723.2	680.7	638.1	595.4	553.0	510.4	467.8
110°	1175.4	1121.9	1068.2	1014.4	980.4	946.1	911.8	877.5	843.3	809.0	774.6



TEST NUMBER: P1444768
 CATALOG NUMBER: EHBR1-48-UNV-TA-L935-UPL40

CANDELA DISTRIBUTION (continued):

	330°	332.5°	335°	337.5°	340°	342.5°	345°	347.5°	350°	352.5°	355°
112.5°	1207.2	1168.8	1130.5	1091.9	1076.5	1060.9	1045.5	1030.0	1014.4	998.7	983.2
115°	1132.6	1106.8	1080.9	1054.7	1049.5	1043.9	1038.6	1032.9	1027.6	1022.0	1016.4
117.5°	1013.2	998.6	984.0	969.5	970.4	971.3	972.5	973.2	974.0	974.7	975.5
120°	889.5	883.2	877.2	871.0	875.9	880.5	885.4	889.8	894.4	898.7	903.2
122.5°	788.1	785.6	783.4	780.7	786.7	792.4	798.0	803.6	809.2	814.3	819.8
125°	708.7	707.4	706.3	704.9	710.9	716.7	722.4	728.0	733.5	738.7	744.1
127.5°	655.6	655.4	655.3	654.8	659.3	663.2	667.3	671.0	675.1	678.6	682.2
130°	618.7	618.0	617.6	616.8	620.7	624.5	628.4	631.6	635.2	638.2	641.5
132.5°	595.0	594.1	593.5	592.6	595.5	598.2	601.0	603.2	605.7	607.6	609.7
135°	575.4	574.3	573.4	572.3	574.9	577.5	580.0	582.1	584.4	586.1	588.0
137.5°	559.0	557.8	556.9	555.8	558.2	560.5	562.6	564.6	566.5	568.4	569.8
140°	544.9	543.4	542.3	540.8	543.0	545.0	547.0	548.6	550.5	551.8	553.2
142.5°	531.3	529.2	527.8	525.7	527.3	528.7	530.1	531.4	532.6	533.6	534.6
145°	522.4	520.1	518.1	515.8	517.0	518.1	519.3	520.3	521.1	521.8	522.6
147.5°	514.4	512.1	509.9	507.7	508.8	509.5	510.2	510.8	511.6	512.1	512.4
150°	506.4	503.8	501.6	499.2	499.9	500.6	501.0	501.7	502.4	502.7	503.0
152.5°	497.2	495.0	492.7	490.3	491.0	491.4	491.8	492.0	492.5	492.9	493.0
155°	491.9	489.9	488.0	485.8	486.4	486.7	487.0	487.2	487.4	487.6	487.7
157.5°	490.3	488.6	487.3	485.5	485.6	485.7	485.8	485.5	485.5	485.4	485.2
160°	489.5	488.1	486.8	485.3	485.2	485.2	485.3	485.0	485.0	484.6	484.3
162.5°	489.7	488.2	486.5	484.9	484.8	484.9	484.8	484.5	484.4	484.2	483.9
165°	491.7	490.5	489.4	488.1	487.9	487.6	487.5	487.0	486.7	486.1	485.7
167.5°	494.2	493.1	492.0	490.6	490.6	490.8	490.7	490.5	490.4	490.1	490.1
170°	497.3	496.3	495.5	494.4	494.1	494.0	493.8	493.5	493.0	492.8	492.3
172.5°	499.8	498.9	497.9	496.8	496.8	496.6	496.3	496.2	495.8	495.5	495.4
175°	498.8	498.2	497.3	496.7	496.5	496.4	496.2	496.1	495.9	495.7	495.4
177.5°	501.0	500.7	499.9	499.5	499.4	499.4	499.2	499.1	499.1	498.9	498.8
180°	501.5	501.5	501.5	501.5	501.5	501.5	501.5	501.5	501.5	501.5	501.5



TEST NUMBER: P1444768
CATALOG NUMBER: EHBR1-48-UNV-TA-L935-UPL40

CANDELA DISTRIBUTION (continued):

	357.5°	360°
0°	37093.8	37093.8
2.5°	37237.4	37235.5
5°	37375.8	37373.7
7.5°	37481.1	37480.5
10°	37493.6	37500.0
12.5°	37418.8	37424.0
15°	37200.3	37210.5
17.5°	36782.6	36796.0
20°	36063.1	36077.1
22.5°	34897.9	34903.6
25°	33203.8	33179.7
27.5°	30894.2	30852.9
30°	27958.3	27918.2
32.5°	24457.7	24432.7
35°	20517.3	20501.5
37.5°	16368.8	16336.6
40°	12341.3	12247.6
42.5°	8808.9	8644.4
45°	6087.7	5892.7
47.5°	4249.9	4129.3
50°	3221.3	3182.4
52.5°	2624.8	2615.8
55°	2214.7	2210.7
57.5°	1906.5	1905.1
60°	1664.4	1664.0
62.5°	1483.9	1484.6
65°	1356.8	1357.0
67.5°	1244.8	1244.0
70°	1115.4	1114.5
72.5°	1026.4	1024.9
75°	957.6	956.7
77.5°	859.7	858.3
80°	741.3	739.3
82.5°	609.7	607.5
85°	454.8	454.9
87.5°	278.2	278.2
90°	131.3	128.3
92.5°	45.8	43.2
95°	52.6	49.3
97.5°	64.6	61.8
100°	82.7	80.3
102.5°	141.1	132.7
105°	247.3	224.3
107.5°	425.2	382.7
110°	740.4	706.1



TEST NUMBER: P1444768
CATALOG NUMBER: EHBR1-48-UNV-TA-L935-UPL40

CANDELA DISTRIBUTION (continued):

	357.5°	360°
112.5°	967.4	951.8
115°	1010.3	1004.7
117.5°	976.0	976.5
120°	907.3	911.7
122.5°	824.6	829.7
125°	749.1	754.1
127.5°	685.5	688.6
130°	643.9	646.8
132.5°	611.3	613.0
135°	589.4	590.8
137.5°	570.9	572.2
140°	554.1	555.1
142.5°	535.2	535.8
145°	523.1	523.5
147.5°	512.3	512.7
150°	503.1	503.3
152.5°	493.0	493.1
155°	487.6	487.6
157.5°	484.7	484.5
160°	484.0	483.7
162.5°	483.5	483.3
165°	485.0	484.4
167.5°	489.6	489.5
170°	492.0	491.7
172.5°	494.9	494.7
175°	495.3	495.1
177.5°	498.8	498.6
180°	501.5	501.5

Cooper Lighting Solutions Photometric Lab
1121 Highway 74 South
Peachtree City, GA 30269



LM-79-2019: Approved Method: Electrical and Photometric Measurements of Solid-
State Lighting Products

Report Prepared for

Cooper Lighting Solutions

Metalux

Report Number: SP1-2506-472-6

Test Date: 08/01/2025

Luminaire Tested: EHBR-60-L935-N

Data in this report applies to families of products including EHBR-60-L935-N

Test Information

Test Method: LM-79-2019
 Report Number: SP1-2506-472-6
 Test Lab: COOPER LIGHTING SOLUTIONS
 Photometer: SP1 - 76IN SPHERE
 Measurement Geometry: 4π
 Issue Date: 08/05/2025
 Manufacturer: COOPER LIGHTING SOLUTIONS
 Product Line: Metalux
 Catalog Number: **EHBR-60-L935-N**
 Description: Elevate Round Highbay at, 60000 lumens, 3500K 90CRI LEDs with N lens

Spectral Parameters

CCT (K): 3406
 CIE u': 0.2394
 CIE v': 0.5094
 Duv: -0.0028
 CIE x: 0.4076
 CIE y: 0.3856
 CIE z: 0.2068
 Peak Wavelength (nm): 630
 Dominant Wavelength (nm): 582
 Purity: 38.0517
 Rf: 91.3
 Rg: 100

CRI (Ra):	94.6		
R1:	96.6	R9:	63.8
R2:	98.4	R10:	94.7
R3:	98.1	R11:	96.6
R4:	95.8	R12:	80.9
R5:	96.2	R13:	97.4
R6:	95.4	R14:	98.3
R7:	91.8	R15:	93.1
R8:	84.4		



Test Conditions

Stabilization Time: 35M
 Operation Time: 1H 35M
 Sphere Temperature (°C): 25.0

REPORT NUMBER: SP1-2506-472-6

Measurement and Test Equipment			
Instrument	Identification Number	Calibration Date	Calibration Due Date
Photometer	76INCH SPHERE IN0058	6/16/2025	12/16/2025
Power Meter	XITRON INXT2011004	1/21/2025	1/21/2026
AC Power Source	CHROMA 61603 IN0063	10/22/2024	10/22/2025
DC Power Source	AGILENT E3634A IN0208	10/22/2024	10/22/2025
Sphere Thermometer	ONSET IN0085	10/22/2024	10/22/2025
Room Thermometer	ONSET IN0046	10/22/2024	10/22/2025

REPORT NUMBER: SP1-2506-472-6

CIE 1931 Chromaticity Diagram



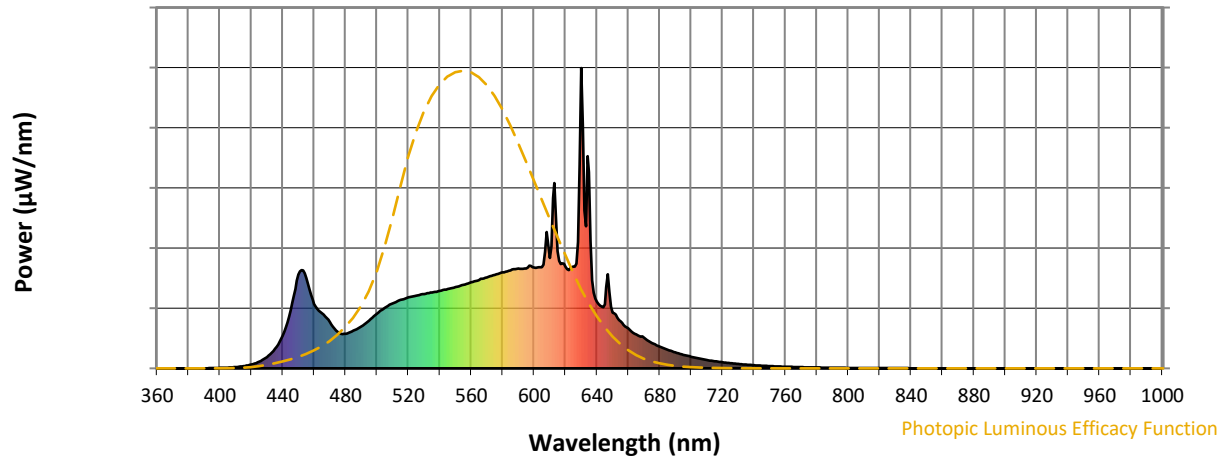
CIE 1931 Chromaticity Diagram with 2017 ANSI 7-Step and 4-Step Quadrangles



Point lies inside the ANSI 3500K 4-step quadrangle

REPORT NUMBER: SP1-2506-472-6

Photopic Flux vs. Wavelength



Photopic Lumens: NR

λ (nm)	Power W [^] /nm	Lumens (φ/nm)	λ (nm)	Power W [^] /nm	Lumens (φ/nm)	λ (nm)	Power W [^] /nm	Lumens (φ/nm)	λ (nm)	Power W [^] /nm	Lumens (φ/nm)	λ (nm)	Power W [^] /nm	Lumens (φ/nm)
360	0	NR	490	140	NR	620	338	NR	750	8	NR	880	0	NR
365	0	NR	495	159	NR	625	339	NR	755	7	NR	885	0	NR
370	0	NR	500	182	NR	630	1000	NR	760	5	NR	890	0	NR
375	0	NR	505	202	NR	635	653	NR	765	5	NR	895	0	NR
380	0	NR	510	216	NR	640	222	NR	770	4	NR	900	0	NR
385	0	NR	515	228	NR	645	214	NR	775	3	NR	905	0	NR
390	0	NR	520	236	NR	650	185	NR	780	3	NR	910	0	NR
395	1	NR	525	242	NR	655	157	NR	785	3	NR	915	0	NR
400	2	NR	530	248	NR	660	133	NR	790	2	NR	920	0	NR
405	3	NR	535	253	NR	665	113	NR	795	2	NR	925	0	NR
410	4	NR	540	258	NR	670	103	NR	800	2	NR	930	0	NR
415	7	NR	545	264	NR	675	85	NR	805	1	NR	935	0	NR
420	13	NR	550	270	NR	680	72	NR	810	1	NR	940	0	NR
425	22	NR	555	278	NR	685	62	NR	815	1	NR	945	0	NR
430	38	NR	560	286	NR	690	53	NR	820	1	NR	950	0	NR
435	65	NR	565	295	NR	695	45	NR	825	1	NR	955	0	NR
440	108	NR	570	303	NR	700	39	NR	830	1	NR	960	0	NR
445	193	NR	575	311	NR	705	33	NR	835	1	NR	965	0	NR
450	312	NR	580	319	NR	710	28	NR	840	1	NR	970	0	NR
455	300	NR	585	326	NR	715	24	NR	845	0	NR	975	0	NR
460	214	NR	590	332	NR	720	20	NR	850	0	NR	980	0	NR
465	184	NR	595	333	NR	725	17	NR	855	0	NR	985	0	NR
470	153	NR	600	336	NR	730	15	NR	860	0	NR	990	0	NR
475	122	NR	605	337	NR	735	12	NR	865	0	NR	995	0	NR
480	115	NR	610	367	NR	740	10	NR	870	0	NR	1000	0	NR
485	125	NR	615	390	NR	745	9	NR	875	0	NR			

REPORT NUMBER: SP1-2506-472-6

Scotopic Flux vs. Wavelength



Scotopic Lumens: NR

S/P: 1.62

λ (nm)	Power W [^] /nm	Lumens (φ/nm)	λ (nm)	Power W [^] /nm	Lumens (φ/nm)	λ (nm)	Power W [^] /nm	Lumens (φ/nm)	λ (nm)	Power W [^] /nm	Lumens (φ/nm)	λ (nm)	Power W [^] /nm	Lumens (φ/nm)
360	0	NR	490	140	NR	620	338	NR	750	8	NR	880	0	NR
365	0	NR	495	159	NR	625	339	NR	755	7	NR	885	0	NR
370	0	NR	500	182	NR	630	1000	NR	760	5	NR	890	0	NR
375	0	NR	505	202	NR	635	653	NR	765	5	NR	895	0	NR
380	0	NR	510	216	NR	640	222	NR	770	4	NR	900	0	NR
385	0	NR	515	228	NR	645	214	NR	775	3	NR	905	0	NR
390	0	NR	520	236	NR	650	185	NR	780	3	NR	910	0	NR
395	1	NR	525	242	NR	655	157	NR	785	3	NR	915	0	NR
400	2	NR	530	248	NR	660	133	NR	790	2	NR	920	0	NR
405	3	NR	535	253	NR	665	113	NR	795	2	NR	925	0	NR
410	4	NR	540	258	NR	670	103	NR	800	2	NR	930	0	NR
415	7	NR	545	264	NR	675	85	NR	805	1	NR	935	0	NR
420	13	NR	550	270	NR	680	72	NR	810	1	NR	940	0	NR
425	22	NR	555	278	NR	685	62	NR	815	1	NR	945	0	NR
430	38	NR	560	286	NR	690	53	NR	820	1	NR	950	0	NR
435	65	NR	565	295	NR	695	45	NR	825	1	NR	955	0	NR
440	108	NR	570	303	NR	700	39	NR	830	1	NR	960	0	NR
445	193	NR	575	311	NR	705	33	NR	835	1	NR	965	0	NR
450	312	NR	580	319	NR	710	28	NR	840	1	NR	970	0	NR
455	300	NR	585	326	NR	715	24	NR	845	0	NR	975	0	NR
460	214	NR	590	332	NR	720	20	NR	850	0	NR	980	0	NR
465	184	NR	595	333	NR	725	17	NR	855	0	NR	985	0	NR
470	153	NR	600	336	NR	730	15	NR	860	0	NR	990	0	NR
475	122	NR	605	337	NR	735	12	NR	865	0	NR	995	0	NR
480	115	NR	610	367	NR	740	10	NR	870	0	NR	1000	0	NR
485	125	NR	615	390	NR	745	9	NR	875	0	NR			

REPORT NUMBER: SP1-2506-472-6

Melanopic Flux vs. Wavelength



Melanopic Lumens: NR M/P: 3.3

λ (nm)	Power W [^] /nm	Lumens (φ/nm)	λ (nm)	Power W [^] /nm	Lumens (φ/nm)	λ (nm)	Power W [^] /nm	Lumens (φ/nm)	λ (nm)	Power W [^] /nm	Lumens (φ/nm)	λ (nm)	Power W [^] /nm	Lumens (φ/nm)
360	0	NR	490	140	NR	620	338	NR	750	8	NR	880	0	NR
365	0	NR	495	159	NR	625	339	NR	755	7	NR	885	0	NR
370	0	NR	500	182	NR	630	1000	NR	760	5	NR	890	0	NR
375	0	NR	505	202	NR	635	653	NR	765	5	NR	895	0	NR
380	0	NR	510	216	NR	640	222	NR	770	4	NR	900	0	NR
385	0	NR	515	228	NR	645	214	NR	775	3	NR	905	0	NR
390	0	NR	520	236	NR	650	185	NR	780	3	NR	910	0	NR
395	1	NR	525	242	NR	655	157	NR	785	3	NR	915	0	NR
400	2	NR	530	248	NR	660	133	NR	790	2	NR	920	0	NR
405	3	NR	535	253	NR	665	113	NR	795	2	NR	925	0	NR
410	4	NR	540	258	NR	670	103	NR	800	2	NR	930	0	NR
415	7	NR	545	264	NR	675	85	NR	805	1	NR	935	0	NR
420	13	NR	550	270	NR	680	72	NR	810	1	NR	940	0	NR
425	22	NR	555	278	NR	685	62	NR	815	1	NR	945	0	NR
430	38	NR	560	286	NR	690	53	NR	820	1	NR	950	0	NR
435	65	NR	565	295	NR	695	45	NR	825	1	NR	955	0	NR
440	108	NR	570	303	NR	700	39	NR	830	1	NR	960	0	NR
445	193	NR	575	311	NR	705	33	NR	835	1	NR	965	0	NR
450	312	NR	580	319	NR	710	28	NR	840	1	NR	970	0	NR
455	300	NR	585	326	NR	715	24	NR	845	0	NR	975	0	NR
460	214	NR	590	332	NR	720	20	NR	850	0	NR	980	0	NR
465	184	NR	595	333	NR	725	17	NR	855	0	NR	985	0	NR
470	153	NR	600	336	NR	730	15	NR	860	0	NR	990	0	NR
475	122	NR	605	337	NR	735	12	NR	865	0	NR	995	0	NR
480	115	NR	610	367	NR	740	10	NR	870	0	NR	1000	0	NR
485	125	NR	615	390	NR	745	9	NR	875	0	NR			

Summary

$R_f = 91.3$
 $R_g = 100$
 $CIE R_a = 94.6$
 $R_9 = 63.8$

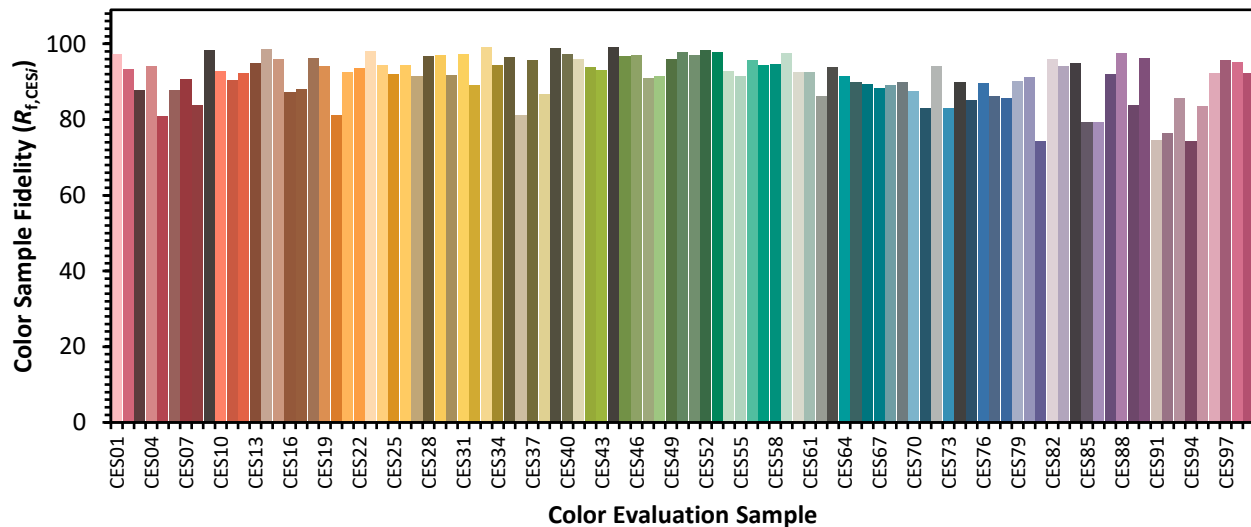


Color Vector Graphics

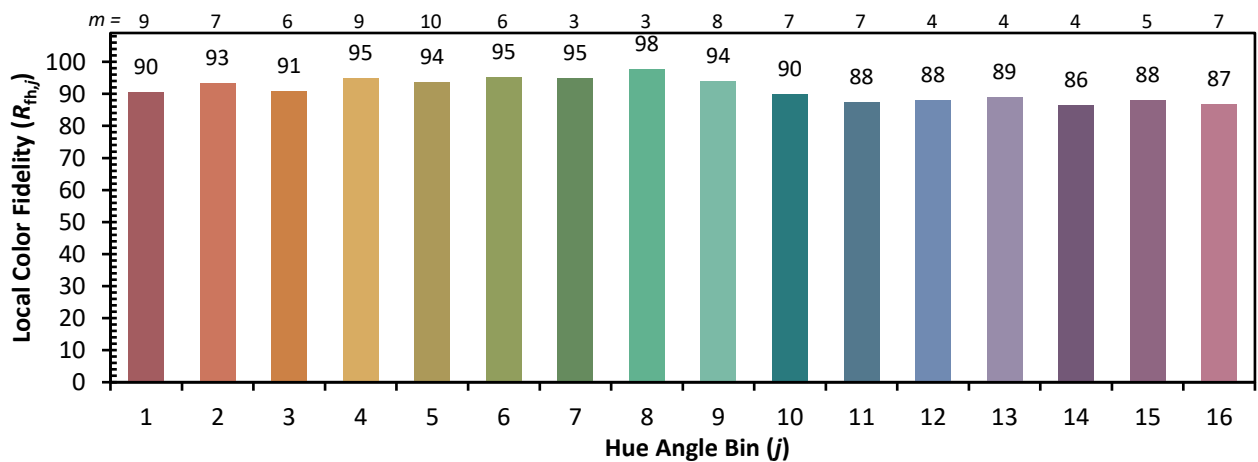
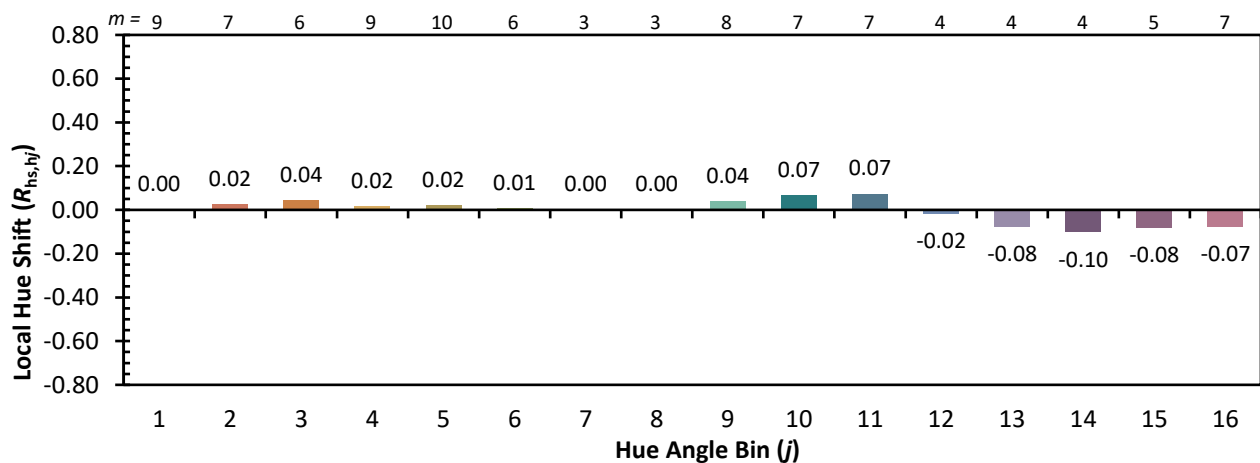
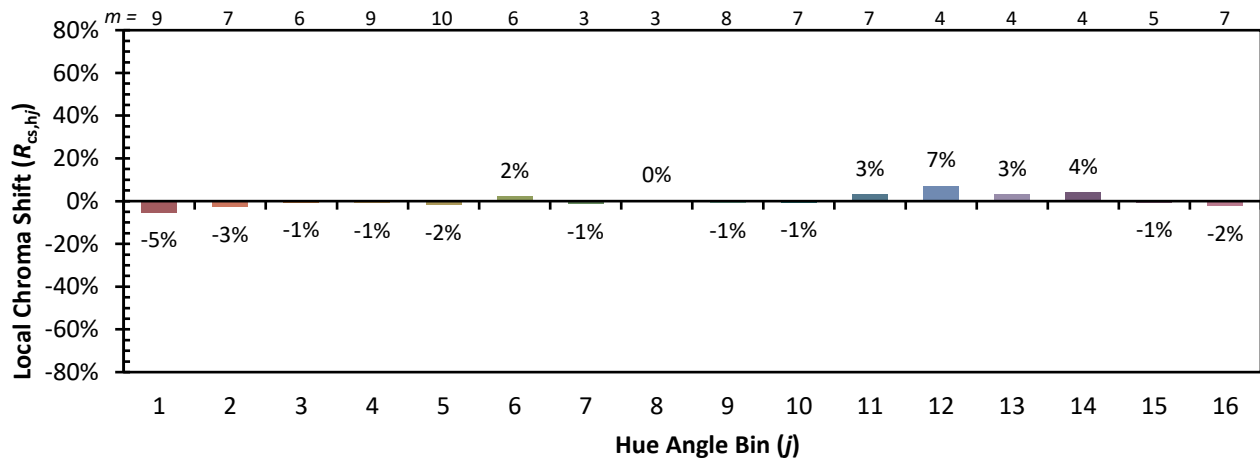


Individual Sample Fidelity Index ($R_{f,i}$)

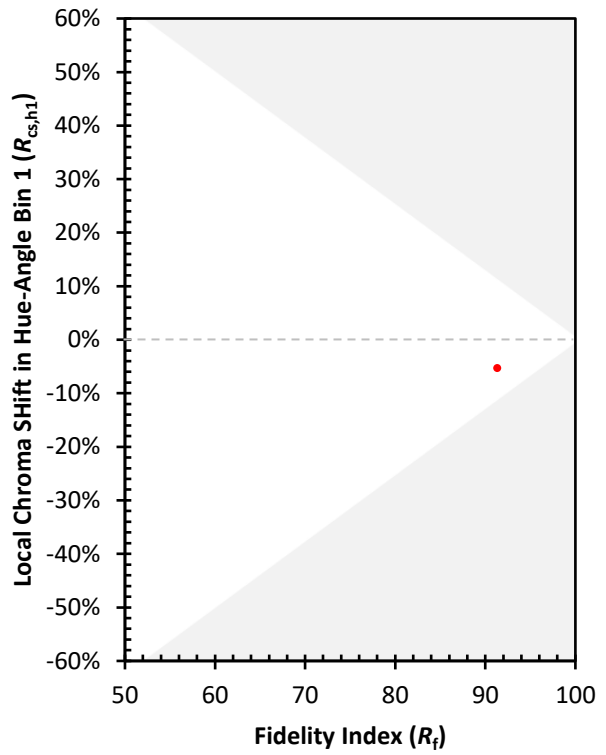
CES01 = 86	CES26 = 94	CES51 = 97	CES76 = 90
CES02 = 63	CES27 = 92	CES52 = 98	CES77 = 86
CES03 = 31	CES28 = 97	CES53 = 98	CES78 = 86
CES04 = 70	CES29 = 97	CES54 = 93	CES79 = 90
CES05 = 50	CES30 = 92	CES55 = 92	CES80 = 91
CES06 = 51	CES31 = 97	CES56 = 96	CES81 = 74
CES07 = 43	CES32 = 89	CES57 = 94	CES82 = 96
CES08 = 41	CES33 = 99	CES58 = 95	CES83 = 94
CES09 = 29	CES34 = 94	CES59 = 98	CES84 = 95
CES10 = 75	CES35 = 97	CES60 = 92	CES85 = 79
CES11 = 58	CES36 = 81	CES61 = 93	CES86 = 79
CES12 = 64	CES37 = 96	CES62 = 86	CES87 = 92
CES13 = 44	CES38 = 87	CES63 = 94	CES88 = 98
CES14 = 74	CES39 = 99	CES64 = 91	CES89 = 84
CES15 = 72	CES40 = 97	CES65 = 90	CES90 = 96
CES16 = 48	CES41 = 96	CES66 = 89	CES91 = 75
CES17 = 49	CES42 = 94	CES67 = 88	CES92 = 76
CES18 = 56	CES43 = 93	CES68 = 89	CES93 = 86
CES19 = 71	CES44 = 99	CES69 = 90	CES94 = 74
CES20 = 67	CES45 = 97	CES70 = 88	CES95 = 83
CES21 = 86	CES46 = 97	CES71 = 83	CES96 = 92
CES22 = 78	CES47 = 91	CES72 = 94	CES97 = 96
CES23 = 91	CES48 = 91	CES73 = 83	CES98 = 95
CES24 = 90	CES49 = 96	CES74 = 90	CES99 = 92
CES25 = 71	CES50 = 98	CES75 = 85	



Color Rendition by Hue-Angle Bin



Measure Comparisons



(END OF REPORT)