

Cooper Lighting Solutions Photometric Lab
1121 Highway 74 South
Peachtree City, GA 30269



Scaled data based on original data using
LM-79-2019 Approved Method: Electrical and Photometric Measurements of Solid-
State Lighting Products

Test Report Prepared for
Cooper Lighting Solutions

Brand: METALUX

Report Number: P1444810

Luminaire Tested: EHBR1-30-UNV-TA-L940-UPL12

Issue Date: 5/1/2026

Test Information

Test Method: LM-79-2019
Report Number: P1444810
REPORT IS A COMBINATION OF REPORTS P1444303 AND P1431635
Test Lab: INNOVATION CENTER
Issue Date: 5/1/2026
Manufacturer: COOPER LIGHTING SOLUTIONS
Product Line: METALUX
Catalog Number: EHBR1-30-UNV-TA-L940-UPL12
Description: Elevate Round Highbay at, 30000 lumens, 4000K 90CRI LEDs with TA lens
Light Source: -
Ballast/Driver: -

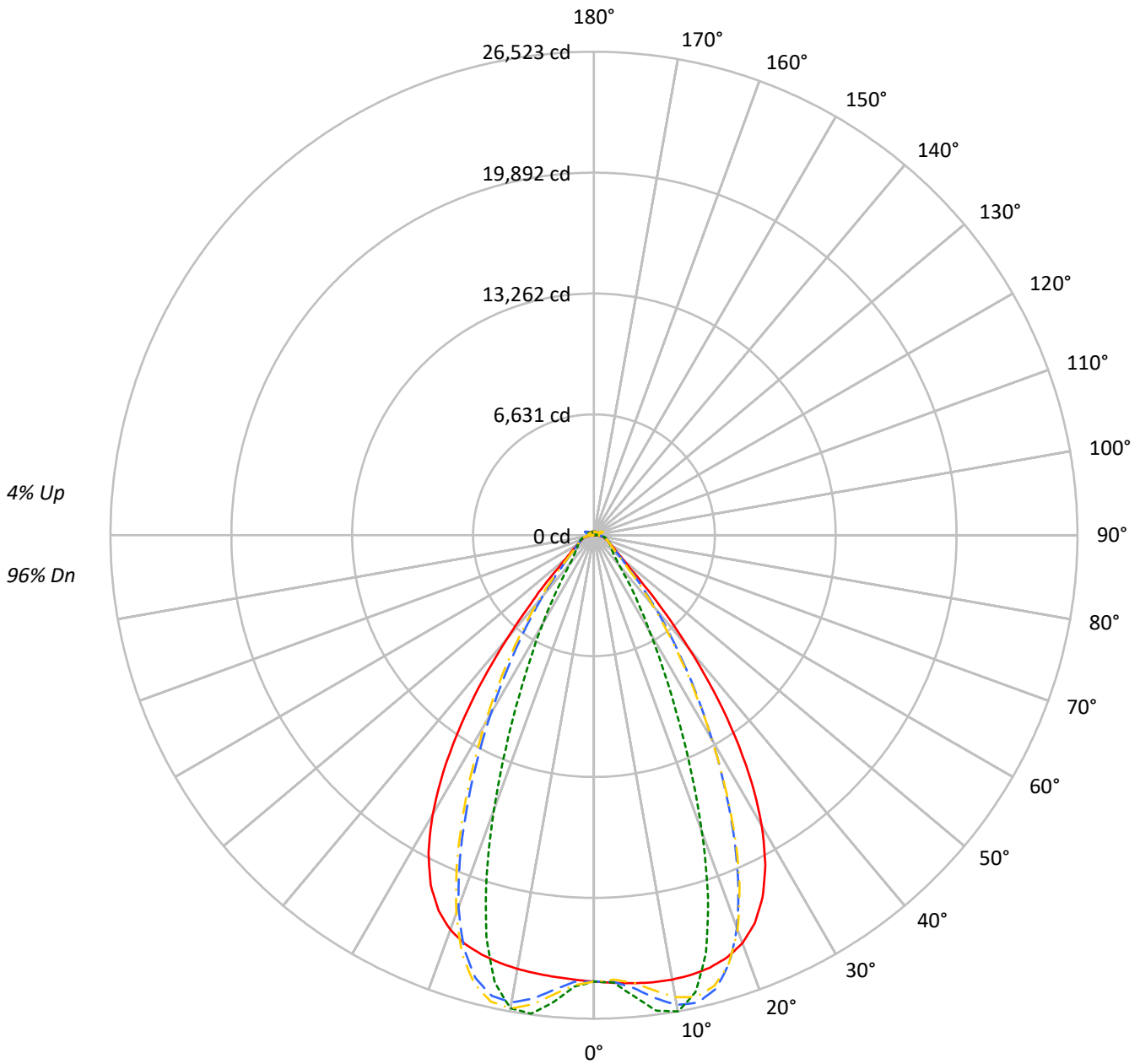
Summary

Lumens per Lamp: N/A
Luminaire Lumens: 29471.7 lumens
Efficiency: N/A
Efficacy: 176.3 lumens/watt
Spacing Criteria (0/90/45): 1.13 / 0.77 / 0.88
Luminous Opening: Vertical Cylinder (Dia: 1.71' x H: 0.1')
CIE Type: Direct

Input Watts (W): 167.2
Input Voltage (V): NR
Input Current (Ain): NR
Voltage Rise (V): NR
Power Factor: NR
Total Harmonic Distortion (THDi): NR
Frequency (hertz): 60
Stabilization Time: NR
Operation Time: NR
Ambient Temperature (°C): NR
Test Distance: 24 FT

TEST NUMBER: P1444810
CATALOG NUMBER: EHBR1-30-UNV-TA-L940-UPL12

Luminous Intensity Polar Plot



— 0°-180° - - 45°-225° - · - · 90°-270° - · - · 135°-315°



TEST NUMBER: P1444810
 CATALOG NUMBER: EHBR1-30-UNV-TA-L940-UPL12

COEFFICIENT OF UTILIZATION - ZONAL CAVITY METHOD:

RF	20				20				20				20				20				
RC	80				70				50				30				10			0	
RW	70	50	30	10	70	50	30	10	50	30	10	50	30	10	50	30	10	50	30	10	0
RCR																					
0	118	118	118	118	115	115	115	115	109	109	109	103	103	103	98	98	98	98	98	98	96
1	111	107	104	102	108	105	102	100	100	98	96	95	94	92	91	90	89	89	89	89	86
2	104	98	93	89	101	96	92	88	92	88	85	88	85	83	85	82	80	80	80	80	78
3	98	90	84	80	95	88	83	79	85	81	77	82	78	75	79	76	73	73	73	73	71
4	92	83	77	72	90	82	76	71	79	74	70	76	72	69	74	70	67	67	67	67	65
5	87	77	70	65	85	76	70	65	73	68	64	71	67	63	69	65	62	62	62	62	60
6	82	72	65	60	80	71	64	60	69	63	59	67	62	58	65	61	57	57	57	57	56
7	77	67	60	55	76	66	60	55	64	59	55	63	58	54	61	57	53	53	53	53	52
8	73	63	56	51	72	62	56	51	60	55	51	59	54	50	58	53	50	50	50	50	48
9	69	59	52	48	68	58	52	48	57	51	47	56	50	47	54	50	46	46	46	46	45
10	66	55	49	45	65	55	49	45	54	48	44	52	47	44	51	47	44	44	44	44	42

AVERAGE LUMINANCE (cd/sqm):

	0°	90°	180°	270°
0°	114974	114974	114974	114974
5°	115531	118900	113914	120458
10°	116496	124836	113702	124010
15°	117067	113163	113503	108607
20°	115857	84302	112065	78000
25°	109663	53316	106039	48375
30°	95799	32039	92088	29281
35°	73727	20105	69487	17809
40°	46639	12611	42671	11851
45°	24038	9825	23641	9663
50°	14094	8739	13661	8603
55°	10797	8268	10397	8194
60°	9136	8446	8747	8337
65°	8581	8821	8253	8520
70°	8383	9235	7965	8888
75°	8965	9795	8479	9362
80°	9276	10845	8410	9900
85°	8737	10466	7059	8961

MAXIMUM LUMINANCE 45°-90°:

Horizontal Angle: 25°
 Vertical Angle: 45°
 Luminance: 36788 cd/sqm



TEST NUMBER: P1444810
 CATALOG NUMBER: EHBR1-30-UNV-TA-L940-UPL12

ZONAL LUMENS:

Zone	Lumens	% Fixture
0°-10°	2412.9	8.2
10°-20°	6787.6	23.0
20°-30°	7730.6	26.2
30°-40°	5556.4	18.9
40°-50°	2562.6	8.7
50°-60°	1226.3	4.2
60°-70°	894.8	3.0
70°-80°	679.8	2.3
80°-90°	311.2	1.1
90°-100°	39.7	0.1
100°-110°	203.6	0.7
110°-120°	375.6	1.3
120°-130°	236.2	0.8
130°-140°	160.1	0.5
140°-150°	125.4	0.4
150°-160°	91.7	0.3
160°-170°	57.4	0.2
170°-180°	20.1	0.1
0°-30°	16931.0	57.4
0°-40°	22487.4	76.3
0°-60°	26276.3	89.2
0°-90°	28162.0	95.6
90°-120°	618.8	2.1
90°-150°	1140.5	3.9
90°-180°	1310.0	4.4
0°-180°	29471.7	100.0

CANDELA DISTRIBUTION:

	0°	90°	180°	270°	360°	Flux
0°	24483	24483	24483	24483	24483	
5°	24668	25387	24322	25720	24668	2357
15°	24560	23741	23812	22785	24560	6920
25°	21900	10647	21176	9660	21900	9928
35°	13532	3690	12753	3269	13532	8305
45°	3889	1590	3825	1564	3889	3308
55°	1459	1117	1405	1107	1459	1347
65°	896	921	861	889	896	895
75°	632	690	597	660	632	657
85°	300	360	243	308	300	282
90°	76	98	18	24	76	48
95°	18	20	18	20	18	17
105°	76	96	52	96	76	99
115°	330	395	346	395	330	306
125°	258	261	290	262	258	234
135°	215	182	230	185	215	167
145°	202	188	213	192	202	127
155°	196	193	207	196	196	91
165°	202	199	208	201	202	57
175°	210	211	213	212	210	20
180°	213	213	213	213	213	



TEST NUMBER: P1444810
 CATALOG NUMBER: EHBR1-30-UNV-TA-L940-UPL12

CANDELA DISTRIBUTION (FULL):

	0°	2.5°	5°	7.5°	10°	12.5°	15°	17.5°	20°	22.5°	25°
0°	24483.0	24483.0	24483.0	24483.0	24483.0	24483.0	24483.0	24483.0	24483.0	24483.0	24483.0
2.5°	24576.5	24574.6	24574.2	24572.4	24572.1	24572.1	24571.2	24569.2	24568.0	24565.2	24561.9
5°	24667.7	24666.6	24667.3	24667.5	24665.8	24662.0	24655.9	24648.6	24639.3	24630.7	24622.8
7.5°	24738.3	24739.9	24742.2	24741.7	24736.3	24727.4	24715.1	24708.2	24712.3	24725.6	24756.2
10°	24751.1	24761.6	24765.7	24764.4	24753.7	24746.1	24749.1	24775.0	24826.6	24895.5	24989.7
12.5°	24701.0	24713.9	24713.4	24709.1	24698.8	24709.3	24746.8	24824.1	24934.7	25070.6	25230.0
15°	24560.0	24576.7	24572.1	24566.5	24559.6	24594.1	24669.2	24803.3	24974.3	25165.8	25361.9
17.5°	24286.5	24306.6	24296.9	24290.5	24284.7	24349.5	24478.4	24674.8	24890.1	25106.8	25292.7
20°	23811.9	23825.4	23802.1	23791.2	23800.4	23927.4	24117.2	24368.0	24595.0	24799.8	24926.9
22.5°	23037.5	23054.2	23010.4	23005.3	23059.4	23254.4	23494.7	23775.0	23988.3	24150.8	24199.7
25°	21899.6	21916.1	21864.0	21895.2	21987.2	22252.8	22538.9	22838.8	23020.8	23141.1	23107.9
27.5°	20363.8	20378.9	20329.5	20393.1	20538.5	20887.5	21224.3	21549.6	21711.7	21796.0	21689.2
30°	18426.8	18458.1	18399.8	18488.5	18710.5	19163.6	19549.5	19914.2	20075.9	20140.0	19973.8
32.5°	16126.3	16170.9	16106.6	16238.5	16548.3	17092.4	17530.9	17938.5	18117.2	18190.5	18002.7
35°	13531.6	13595.5	13521.7	13719.7	14101.8	14707.8	15193.3	15648.3	15860.1	15963.9	15774.7
37.5°	10782.7	10843.5	10803.5	11067.8	11487.3	12115.5	12610.9	13101.8	13341.1	13496.8	13347.7
40°	8083.8	8139.5	8169.7	8471.7	8866.4	9458.4	9934.3	10420.1	10687.7	10883.2	10791.2
42.5°	5705.6	5761.7	5864.4	6155.8	6485.0	6975.0	7382.7	7818.8	8074.4	8283.0	8247.6
45°	3889.3	3954.6	4083.2	4321.9	4559.9	4911.5	5210.9	5550.0	5758.8	5949.9	5952.2
47.5°	2725.4	2771.3	2886.2	3049.2	3204.4	3644.5	3662.6	3829.2	3969.6	4112.5	4131.0
50°	2100.5	2128.1	2189.0	2279.8	2367.8	2482.0	2586.6	2707.5	2793.8	2872.1	2890.8
52.5°	1726.4	1743.9	1775.0	1824.2	1875.2	1937.4	1993.3	2059.7	2106.6	2148.6	2157.3
55°	1459.1	1473.7	1519.9	1529.2	1587.5	1598.8	1623.7	1664.0	1691.3	1716.5	1722.7
57.5°	1257.4	1268.0	1277.8	1298.7	1316.7	1342.8	1363.8	1392.8	1410.0	1428.2	1429.7
60°	1098.3	1105.9	1112.9	1127.4	1139.7	1157.8	1172.3	1192.0	1204.3	1217.9	1219.5
62.5°	979.9	985.3	990.0	999.6	1008.2	1022.2	1033.8	1050.2	1061.7	1072.2	1074.6
65°	895.7	899.7	902.7	909.9	917.6	929.4	939.8	953.3	961.7	969.7	971.5
67.5°	821.1	824.9	828.0	834.6	839.9	848.7	855.7	865.8	872.2	878.6	878.8
70°	735.6	739.2	741.5	747.6	751.9	759.6	765.2	774.3	780.8	788.0	789.8
72.5°	676.5	678.5	681.7	687.4	693.2	701.4	708.9	718.4	726.2	733.7	736.8
75°	631.5	633.9	635.9	640.8	644.9	651.8	657.4	666.0	672.9	680.8	684.8
77.5°	566.4	569.3	571.1	575.9	579.5	586.1	590.2	597.9	603.6	610.9	614.4
80°	488.0	490.6	491.9	496.4	499.3	505.3	509.4	516.9	521.5	528.8	533.1
82.5°	401.0	403.5	404.2	408.5	410.0	415.0	418.0	425.7	431.4	440.9	447.5
85°	300.3	301.2	302.6	301.5	307.6	308.0	314.9	316.1	325.2	327.6	337.9
87.5°	183.5	186.3	187.6	191.8	193.6	197.8	199.1	203.6	206.0	211.0	213.4
90°	76.0	80.1	81.4	86.3	87.5	91.8	92.7	97.5	98.8	103.8	105.6
92.5°	16.0	17.0	17.7	18.9	19.8	21.2	22.5	23.5	24.4	25.8	27.7
95°	18.0	19.0	20.0	21.1	22.1	23.2	24.2	25.2	26.3	27.3	30.3
97.5°	22.3	23.2	24.0	25.0	25.9	26.7	27.7	28.6	29.4	30.3	33.9
100°	28.4	29.2	29.9	30.7	31.5	32.2	33.0	33.8	34.6	35.3	41.9
102.5°	45.7	48.4	51.1	53.8	56.6	59.3	62.0	64.7	67.4	70.1	84.2
105°	75.7	83.0	90.5	97.7	105.1	112.5	119.9	127.1	134.4	141.7	164.9
107.5°	127.2	140.7	154.4	168.0	181.6	195.2	208.8	222.3	236.0	249.4	273.0
110°	231.9	242.7	253.7	264.6	275.5	286.4	297.3	308.0	319.0	329.8	346.9



TEST NUMBER: P1444810
 CATALOG NUMBER: EHBR1-30-UNV-TA-L940-UPL12

CANDELA DISTRIBUTION (continued):

	0°	2.5°	5°	7.5°	10°	12.5°	15°	17.5°	20°	22.5°	25°
112.5°	311.8	316.7	321.5	326.4	331.4	336.0	341.0	345.8	350.7	355.5	367.7
115°	330.2	331.8	333.5	335.1	336.8	338.4	340.0	341.4	343.1	344.5	352.7
117.5°	322.7	322.3	322.0	321.5	321.0	320.5	320.0	319.4	318.8	318.3	322.8
120°	303.9	302.2	300.6	298.8	297.1	295.2	293.6	291.7	289.8	287.9	289.7
122.5°	279.6	277.5	275.7	273.5	271.5	269.3	267.3	264.9	262.8	260.6	261.0
125°	257.6	255.5	253.6	251.4	249.2	247.1	244.8	242.5	240.3	237.8	238.0
127.5°	239.0	237.5	236.0	234.2	232.5	230.9	229.1	227.2	225.6	223.5	223.3
130°	227.9	226.7	225.2	223.6	222.0	220.3	218.6	216.9	215.2	213.3	213.1
132.5°	219.5	218.5	217.4	216.2	214.9	213.3	212.0	210.5	209.2	207.7	207.4
135°	214.8	213.7	212.8	211.6	210.4	209.0	207.6	206.1	204.7	203.2	203.1
137.5°	211.1	210.3	209.3	208.0	206.9	205.4	204.3	202.7	201.4	199.9	199.8
140°	207.9	207.0	206.1	205.0	203.8	202.6	201.2	200.0	198.6	197.2	197.1
142.5°	203.8	202.9	202.2	201.2	200.3	199.1	198.0	196.8	195.6	194.3	194.4
145°	201.5	200.9	200.2	199.4	198.4	197.3	196.4	195.2	194.2	193.1	193.2
147.5°	199.7	199.1	198.6	197.9	197.2	196.1	195.3	194.2	193.4	192.4	192.6
150°	198.2	197.6	197.2	196.5	195.7	194.8	194.0	193.1	192.3	191.3	191.5
152.5°	196.2	195.6	195.2	194.4	193.8	192.8	192.3	191.3	190.5	189.6	189.7
155°	195.8	195.3	194.6	194.1	193.3	192.7	191.8	191.1	190.3	189.5	189.7
157.5°	196.4	195.7	195.3	194.6	194.2	193.5	192.9	192.2	191.5	190.9	190.9
160°	197.9	197.3	196.8	196.2	195.6	194.9	194.3	193.7	193.2	192.5	192.6
162.5°	199.6	198.9	198.3	197.8	197.3	196.6	196.0	195.6	195.0	194.2	194.2
165°	201.6	201.2	200.8	200.3	199.9	199.5	199.0	198.4	198.0	197.4	197.4
167.5°	205.0	204.4	204.1	203.6	203.1	202.7	202.2	201.6	201.3	200.7	200.7
170°	207.1	206.6	206.5	206.2	205.8	205.4	205.1	204.8	204.4	204.0	204.0
172.5°	209.2	208.8	208.6	208.4	208.0	207.9	207.6	207.3	207.1	206.7	206.9
175°	210.0	209.7	209.6	209.4	209.3	209.2	209.1	208.9	208.9	208.6	208.6
177.5°	211.7	211.6	211.6	211.5	211.5	211.4	211.3	211.1	211.0	211.0	211.0
180°	212.9	212.9	212.9	212.9	212.9	212.9	212.9	212.9	212.9	212.9	212.9



TEST NUMBER: P1444810
 CATALOG NUMBER: EHBR1-30-UNV-TA-L940-UPL12

CANDELA DISTRIBUTION (continued):

	27.5°	30°	32.5°	35°	37.5°	40°	42.5°	45°	47.5°	50°	52.5°
0°	24483.0	24483.0	24483.0	24483.0	24483.0	24483.0	24483.0	24483.0	24483.0	24483.0	24483.0
2.5°	24559.6	24556.6	24552.5	24547.4	24542.9	24537.7	24525.5	24521.8	24525.9	24528.6	24534.2
5°	24617.9	24619.7	24620.3	24631.4	24641.1	24665.1	24853.5	24928.3	24986.3	25023.0	25078.8
7.5°	24793.9	24850.5	24906.5	24981.8	25046.7	25134.5	25464.0	25604.3	25704.0	25775.7	25864.0
10°	25092.0	25215.6	25331.4	25467.2	25583.9	25717.6	26024.3	26161.0	26247.3	26310.0	26368.7
12.5°	25392.4	25563.8	25718.6	25869.7	25996.1	26111.9	26219.8	26267.7	26271.7	26273.7	26242.6
15°	25548.8	25712.7	25849.2	25949.0	26023.3	26056.1	25870.4	25772.9	25649.8	25548.3	25381.5
17.5°	25450.0	25548.3	25607.3	25601.5	25570.9	25468.1	24942.0	24652.6	24365.4	24106.5	23767.1
20°	25011.1	25003.7	24952.4	24807.1	24632.1	24359.8	23457.9	22937.6	22434.4	21992.5	21456.4
22.5°	24194.6	24066.2	23887.0	23573.8	23225.8	22750.3	21457.8	20692.3	19991.9	19373.2	18680.1
25°	23011.6	22747.2	22416.8	21919.6	21378.8	20685.2	19092.1	18140.1	17299.1	16569.8	15770.0
27.5°	21497.4	21099.3	20615.1	19926.9	19194.2	18305.6	16539.4	15488.7	14585.9	13804.0	12952.8
30°	19704.8	19187.0	18561.8	17707.6	16823.9	15816.1	14024.7	12960.5	12046.7	11242.4	10390.5
32.5°	17679.0	17072.5	16339.9	15381.2	14425.5	13389.3	11659.4	10629.2	9756.3	8982.4	8211.4
35°	15444.7	14794.3	14019.2	13041.4	12091.5	11084.0	9496.6	8567.8	7796.9	7112.8	6490.3
37.5°	13048.0	12409.3	11672.7	10751.1	9870.2	8957.3	7587.6	6809.3	6162.4	5594.6	5113.9
40°	10556.1	9997.2	9359.8	8563.0	7811.3	7051.0	5926.7	5308.8	4798.3	4365.3	4005.1
42.5°	8094.6	7661.6	7172.7	6543.1	5967.8	5388.9	4523.6	4065.8	3687.7	3376.0	3121.4
45°	5872.9	5583.3	5255.4	4817.6	4419.6	4015.9	3399.9	3078.3	2832.0	2631.0	2461.0
47.5°	4105.5	3937.4	3927.2	3522.6	3230.8	2983.9	2587.1	2383.9	2233.1	2111.3	2003.7
50°	2883.2	2801.8	2700.8	2556.5	2421.1	2281.5	2039.7	1917.0	1828.5	1754.8	1686.7
52.5°	2155.4	2113.2	2059.4	1982.8	1909.4	1830.9	1677.9	1599.7	1572.0	1503.2	1449.4
55°	1721.6	1697.4	1666.7	1621.7	1577.1	1559.2	1428.1	1370.1	1333.3	1306.2	1277.2
57.5°	1430.0	1412.0	1393.8	1363.3	1337.5	1306.2	1236.6	1206.8	1185.0	1168.9	1148.9
60°	1219.8	1209.0	1198.8	1181.0	1167.0	1150.1	1105.9	1089.1	1077.7	1068.0	1055.3
62.5°	1076.6	1071.0	1065.8	1056.3	1049.2	1040.0	1009.8	1001.7	996.0	991.2	983.4
65°	973.3	969.3	966.3	960.0	956.4	951.1	925.1	919.7	916.2	914.4	909.9
67.5°	879.3	875.2	873.2	868.8	867.3	863.9	842.7	839.7	838.5	839.0	837.5
70°	791.5	789.8	790.7	789.9	792.0	792.6	779.7	779.6	781.0	783.7	784.0
72.5°	738.9	738.9	739.9	740.3	742.2	743.2	732.5	731.9	732.6	734.5	734.6
75°	688.8	689.6	692.3	693.2	695.5	695.9	681.8	680.2	680.3	682.2	681.5
77.5°	619.5	622.4	627.6	630.4	634.7	635.5	619.6	617.8	617.9	619.7	618.1
80°	540.8	546.5	554.8	560.5	567.2	569.9	553.6	549.7	546.0	545.5	542.2
82.5°	457.3	464.2	474.1	479.2	486.4	488.1	460.8	455.6	452.5	452.8	449.8
85°	349.1	354.3	363.3	366.2	370.7	370.3	339.1	325.7	329.2	323.7	328.1
87.5°	218.9	222.0	227.7	228.3	230.5	230.0	198.6	192.5	190.6	190.7	188.5
90°	110.8	113.0	118.0	118.2	121.7	121.4	96.1	93.4	90.9	92.0	88.8
92.5°	29.9	31.7	33.8	35.7	37.8	39.8	38.9	40.0	38.3	36.1	34.6
95°	33.4	36.4	39.5	42.5	45.6	48.6	51.7	54.8	51.9	49.0	46.1
97.5°	37.5	41.2	44.7	48.3	51.9	55.5	59.2	62.8	59.7	56.5	53.4
100°	48.7	55.4	62.2	68.9	75.6	82.4	89.2	95.9	90.0	83.8	78.0
102.5°	98.5	112.7	127.0	141.2	155.5	169.7	184.2	198.5	184.8	171.1	157.4
105°	188.0	211.2	234.3	257.2	280.3	303.5	326.9	350.0	328.2	306.4	284.7
107.5°	296.4	319.8	343.1	366.4	389.9	413.3	437.1	460.6	439.3	417.8	396.7
110°	364.0	380.9	398.0	415.0	432.0	449.1	466.7	483.7	470.9	458.0	445.1



TEST NUMBER: P1444810
 CATALOG NUMBER: EHBR1-30-UNV-TA-L940-UPL12

CANDELA DISTRIBUTION (continued):

	27.5°	30°	32.5°	35°	37.5°	40°	42.5°	45°	47.5°	50°	52.5°
112.5°	379.7	391.9	404.1	416.0	428.0	440.1	453.1	465.4	458.7	452.0	445.5
115°	360.7	368.9	376.9	385.0	393.1	401.0	410.0	418.3	416.1	413.7	411.4
117.5°	327.1	331.6	336.0	340.3	344.5	348.9	354.6	359.1	359.1	359.2	359.3
120°	291.4	293.1	294.7	296.4	297.9	299.5	302.7	304.6	306.0	307.3	308.8
122.5°	261.5	261.9	262.3	262.6	263.0	263.4	265.5	266.3	267.1	267.8	268.7
125°	238.0	237.9	237.9	237.9	237.8	237.8	239.8	240.1	239.9	239.4	239.2
127.5°	223.0	222.7	222.3	222.0	221.5	221.2	222.9	223.0	222.0	220.8	219.6
130°	212.9	212.7	212.3	212.0	211.8	211.7	213.6	213.9	212.2	210.4	208.7
132.5°	207.1	207.0	206.6	206.5	206.3	206.0	208.3	208.7	206.8	204.8	202.9
135°	202.8	202.6	202.5	202.4	202.2	202.1	204.7	205.1	203.4	201.3	199.5
137.5°	199.5	199.4	199.2	199.2	199.0	198.9	201.7	202.3	200.9	199.1	197.6
140°	197.1	196.9	196.9	196.9	196.9	197.0	200.1	200.8	199.6	198.3	196.9
142.5°	194.4	194.6	194.7	195.0	195.1	195.4	199.0	199.9	198.9	197.8	196.8
145°	193.3	193.7	193.9	194.2	194.5	194.9	198.9	200.1	199.5	198.6	197.9
147.5°	192.5	192.9	193.0	193.3	193.6	194.2	198.4	199.7	199.2	198.5	198.1
150°	191.5	191.9	192.1	192.5	192.9	193.4	198.3	199.8	199.4	198.9	198.4
152.5°	189.9	190.1	190.3	190.6	190.9	191.5	197.5	199.1	198.8	198.3	198.0
155°	189.7	189.8	189.9	190.1	190.2	190.7	197.3	199.0	198.7	198.4	198.2
157.5°	190.9	190.8	190.7	190.9	191.0	191.1	198.2	200.1	199.7	199.5	199.2
160°	192.4	192.4	192.2	192.3	192.2	192.3	199.6	201.4	201.2	200.9	200.6
162.5°	194.2	194.5	194.4	194.4	194.4	194.7	202.0	204.0	203.6	203.2	202.9
165°	197.4	197.2	197.1	197.2	197.1	197.1	204.0	205.8	205.6	205.2	205.0
167.5°	200.5	200.6	200.6	200.6	200.6	200.8	207.1	208.8	208.6	208.2	208.0
170°	203.9	204.0	204.0	204.1	204.2	204.4	209.7	211.1	210.9	210.5	210.3
172.5°	207.0	207.2	207.3	207.4	207.5	207.7	212.2	213.4	213.3	213.0	212.7
175°	208.7	208.8	208.9	209.1	209.2	209.3	212.9	213.8	213.7	213.5	213.3
177.5°	211.2	211.2	211.4	211.5	211.7	211.8	214.0	214.6	214.5	214.5	214.4
180°	212.9	212.9	212.9	212.9	212.9	212.9	212.9	212.9	212.9	212.9	212.9



TEST NUMBER: P1444810
 CATALOG NUMBER: EHBR1-30-UNV-TA-L940-UPL12

CANDELA DISTRIBUTION (continued):

	55°	57.5°	60°	62.5°	65°	67.5°	70°	72.5°	75°	77.5°	80°
0°	24483.0	24483.0	24483.0	24483.0	24483.0	24483.0	24483.0	24483.0	24483.0	24483.0	24483.0
2.5°	24535.5	24544.2	24545.4	24555.5	24554.7	24566.7	24564.8	24574.6	24568.8	24576.9	24570.1
5°	25111.9	25164.1	25191.4	25242.4	25258.5	25304.1	25317.1	25358.7	25360.4	25393.5	25385.9
7.5°	25926.6	26003.5	26049.3	26112.3	26144.3	26196.8	26220.0	26258.8	26271.4	26302.2	26304.5
10°	26413.1	26450.4	26476.6	26494.2	26510.3	26517.8	26526.6	26524.2	26526.6	26523.1	26530.7
12.5°	26221.7	26167.1	26131.0	26062.6	26022.9	25947.4	25910.2	25837.5	25811.1	25748.7	25739.7
15°	25252.5	25062.2	24927.7	24732.1	24609.1	24416.7	24304.1	24130.5	24051.2	23913.2	23877.0
17.5°	23486.0	23132.8	22859.2	22508.5	22265.0	21937.2	21731.0	21459.6	21311.0	21092.2	21016.4
20°	21009.6	20486.8	20076.6	19587.9	19238.2	18802.5	18523.6	18171.8	17967.5	17698.8	17589.8
22.5°	18102.2	17451.1	16938.9	16361.6	15939.7	15454.1	15120.0	14739.3	14517.1	14225.1	14095.8
25°	15105.3	14387.5	13818.0	13209.8	12764.0	12277.2	11943.0	11569.1	11339.2	11061.9	10933.4
27.5°	12239.2	11512.6	10962.2	10396.7	9987.8	9548.6	9247.0	8920.5	8716.5	8479.8	8359.0
30°	9710.0	9069.1	8600.7	8131.4	7791.3	7434.5	7183.9	6913.4	6734.3	6531.7	6416.5
32.5°	7649.3	7154.5	6787.8	6415.4	6137.0	5838.9	5622.3	5383.6	5222.0	5041.0	4936.8
35°	6058.1	5673.7	5381.2	5074.7	4835.4	4581.6	4390.8	4184.7	4039.7	3883.9	3793.8
37.5°	4786.5	4480.8	4240.1	3985.5	3789.1	3578.7	3507.9	3271.5	3121.2	2996.8	2910.7
40°	3756.5	3513.4	3314.2	3119.5	2959.3	2799.8	2671.8	2545.4	2448.5	2359.5	2298.0
42.5°	2933.6	2757.4	2612.0	2469.3	2352.4	2236.2	2143.4	2056.4	1991.1	1933.0	1893.3
45°	2332.0	2210.9	2109.8	2009.4	1926.9	1849.3	1786.9	1731.4	1689.2	1654.2	1629.4
47.5°	1915.8	1832.9	1761.6	1693.8	1637.8	1587.0	1545.1	1531.5	1486.2	1455.6	1444.0
50°	1628.1	1578.1	1523.9	1474.0	1436.5	1399.3	1372.2	1345.7	1328.6	1314.6	1310.4
52.5°	1413.5	1375.2	1345.1	1313.4	1288.7	1262.3	1243.6	1225.9	1216.5	1209.2	1208.3
55°	1253.9	1227.2	1207.1	1185.9	1171.2	1155.6	1145.9	1136.6	1132.5	1128.8	1129.1
57.5°	1133.2	1115.3	1102.2	1088.4	1080.5	1073.1	1070.6	1068.2	1069.5	1070.1	1072.1
60°	1045.1	1033.5	1025.4	1017.5	1014.1	1011.7	1013.5	1015.6	1019.9	1023.3	1026.4
62.5°	977.7	971.1	967.0	962.9	962.5	962.7	966.3	969.7	975.2	979.2	982.1
65°	908.3	904.4	903.2	900.4	901.8	902.7	907.1	909.8	915.1	918.2	922.0
67.5°	838.1	837.3	838.0	838.0	840.5	842.6	846.8	849.8	854.4	857.3	860.4
70°	786.3	786.7	788.6	788.9	791.6	793.0	796.7	798.7	802.7	805.2	808.9
72.5°	736.0	735.2	735.6	734.4	735.3	735.0	736.9	738.0	741.4	743.4	747.8
75°	682.3	680.1	679.5	677.1	677.2	675.4	676.3	676.2	678.4	679.4	682.6
77.5°	617.6	613.8	611.9	607.8	607.7	606.2	607.8	608.8	612.8	614.7	618.4
80°	540.1	534.1	531.3	526.7	527.5	527.2	531.1	534.2	539.1	540.0	544.7
82.5°	448.9	442.8	439.9	435.3	436.4	436.5	440.1	440.7	445.0	446.8	452.2
85°	321.4	323.7	317.3	317.8	316.4	318.9	321.4	324.5	328.0	333.9	338.5
87.5°	189.3	188.5	190.7	191.0	194.2	196.0	201.2	204.2	210.2	214.7	223.1
90°	88.8	85.6	87.2	86.1	89.1	87.9	90.7	89.1	92.5	92.7	97.1
92.5°	32.2	30.6	28.3	26.6	24.4	22.8	21.5	21.0	19.8	19.2	18.0
95°	43.3	40.4	37.6	34.8	32.0	29.1	28.0	27.0	25.9	24.9	23.9
97.5°	50.3	47.3	44.3	41.1	38.0	34.9	34.3	33.5	32.9	32.1	31.5
100°	71.9	66.1	60.1	54.1	48.2	42.3	41.7	41.2	40.6	40.1	39.5
102.5°	143.9	130.2	116.7	103.0	89.5	75.9	73.6	71.2	68.8	66.5	64.1
105°	262.8	241.0	219.2	197.5	175.8	154.0	147.6	140.9	134.4	127.9	121.5
107.5°	375.4	354.0	332.8	311.6	290.4	269.2	258.8	248.7	238.2	228.0	217.8
110°	432.1	419.3	406.6	393.6	380.9	368.1	358.2	348.4	338.6	328.7	319.0



TEST NUMBER: P1444810
 CATALOG NUMBER: EHBR1-30-UNV-TA-L940-UPL12

CANDELA DISTRIBUTION (continued):

	55°	57.5°	60°	62.5°	65°	67.5°	70°	72.5°	75°	77.5°	80°
112.5°	438.9	432.4	425.9	419.3	412.9	406.4	401.5	396.7	391.9	387.1	382.2
115°	409.1	406.8	404.6	402.4	400.2	398.0	397.5	397.3	396.7	396.3	396.0
117.5°	359.3	359.4	359.4	359.6	359.8	360.0	362.3	364.6	367.1	369.7	372.2
120°	310.1	311.4	312.8	314.2	315.6	317.2	320.3	323.6	326.7	330.2	333.6
122.5°	269.4	270.2	270.9	271.9	272.7	273.6	276.6	279.8	282.8	286.1	289.6
125°	238.6	238.1	237.8	237.4	236.9	236.7	239.1	241.6	244.1	246.8	249.4
127.5°	218.3	217.1	215.8	214.7	213.3	212.2	213.4	214.7	216.0	217.4	218.8
130°	206.7	205.0	203.0	201.3	199.3	197.6	197.9	198.1	198.3	198.7	199.0
132.5°	200.8	198.8	196.7	194.6	192.6	190.5	190.0	189.6	189.0	188.8	188.5
135°	197.5	195.6	193.5	191.5	189.5	187.6	186.7	185.9	185.1	184.4	183.7
137.5°	195.9	194.3	192.8	191.2	189.3	187.7	186.6	185.7	184.6	183.9	182.9
140°	195.5	194.2	192.7	191.3	190.0	188.7	187.5	186.8	185.9	185.2	184.4
142.5°	195.6	194.5	193.4	192.3	191.2	190.1	189.2	188.4	187.5	186.8	186.0
145°	197.0	196.2	195.4	194.5	193.7	192.9	192.0	191.5	190.7	190.1	189.7
147.5°	197.5	196.9	196.2	195.6	194.9	194.2	193.7	193.3	192.6	192.2	191.6
150°	197.8	197.2	196.6	196.3	195.6	195.0	194.5	194.2	193.6	193.4	193.0
152.5°	197.3	196.9	196.3	195.9	195.3	194.8	194.4	194.2	193.7	193.4	192.9
155°	197.7	197.3	196.9	196.5	195.9	195.6	195.2	194.7	194.4	194.1	193.6
157.5°	198.8	198.5	198.1	197.8	197.2	196.9	196.5	196.1	195.6	195.4	195.0
160°	200.2	199.9	199.5	199.2	198.8	198.4	197.9	197.5	197.0	196.7	196.1
162.5°	202.4	202.0	201.6	201.2	200.8	200.4	199.9	199.6	199.2	198.8	198.3
165°	204.6	204.2	203.8	203.5	203.3	202.9	202.4	202.0	201.5	201.1	200.6
167.5°	207.7	207.4	207.0	206.7	206.3	206.0	205.6	205.2	204.8	204.3	203.8
170°	210.0	209.5	209.2	208.9	208.5	208.1	207.8	207.3	206.9	206.6	206.1
172.5°	212.4	212.2	211.9	211.8	211.3	211.0	210.7	210.4	210.1	209.7	209.4
175°	213.3	213.2	213.1	212.8	212.7	212.5	212.3	212.2	212.0	211.9	211.7
177.5°	214.4	214.3	214.3	214.1	214.0	214.0	213.8	213.7	213.6	213.4	213.3
180°	212.9	212.9	212.9	212.9	212.9	212.9	212.9	212.9	212.9	212.9	212.9



TEST NUMBER: P1444810
 CATALOG NUMBER: EHBR1-30-UNV-TA-L940-UPL12

CANDELA DISTRIBUTION (continued):

	82.5°	85°	87.5°	90°	92.5°	95°	97.5°	100°	102.5°	105°	107.5°
0°	24483.0	24483.0	24483.0	24483.0	24483.0	24483.0	24483.0	24483.0	24483.0	24483.0	24483.0
2.5°	24577.2	24570.9	24573.9	24562.4	24565.2	24551.3	24550.0	24534.2	24532.7	24517.9	24512.4
5°	25409.3	25395.6	25411.1	25387.1	25391.7	25360.4	25357.8	25317.4	25303.4	25252.7	25230.8
7.5°	26323.8	26318.7	26328.1	26308.0	26307.3	26279.4	26267.9	26231.6	26209.1	26155.9	26121.9
10°	26524.2	26529.0	26521.2	26523.1	26512.2	26509.2	26498.0	26491.0	26472.8	26459.0	26438.7
12.5°	25692.3	25697.2	25665.5	25685.7	25669.7	25706.9	25703.9	25747.6	25754.3	25809.7	25830.6
15°	23769.4	23763.5	23702.6	23740.9	23720.3	23801.9	23820.0	23929.7	23988.3	24129.1	24215.5
17.5°	20864.8	20849.1	20763.3	20810.1	20786.3	20906.4	20946.7	21122.0	21231.4	21458.1	21619.7
20°	17402.3	17372.2	17271.9	17326.6	17302.1	17438.5	17496.1	17708.0	17848.9	18149.3	18363.0
22.5°	13896.7	13849.3	13751.0	13802.0	13778.9	13920.3	13995.2	14207.8	14369.3	14677.6	14927.0
25°	10748.8	10706.5	10611.5	10647.2	10638.6	10758.3	10824.8	11025.9	11184.6	11478.3	11716.4
27.5°	8198.4	8154.3	8068.5	8093.9	8085.1	8187.0	8249.8	8417.8	8554.3	8801.5	9010.6
30°	6274.6	6221.5	6148.8	6162.7	6156.8	6239.3	6297.9	6439.4	6556.5	6765.4	6945.5
32.5°	4809.5	4756.1	4689.3	4695.8	4687.0	4751.8	4800.1	4923.1	5025.1	5202.8	5359.6
35°	3679.9	3742.2	3599.4	3689.9	3595.7	3734.0	3684.3	3761.1	3848.9	3998.6	4129.3
37.5°	2829.0	2785.5	2748.8	2744.9	2744.7	2776.8	2814.6	2888.6	2965.9	3077.4	3192.7
40°	2241.8	2211.4	2187.6	2185.8	2187.6	2210.3	2238.3	2289.5	2346.1	2426.2	2510.9
42.5°	1859.4	1839.2	1824.8	1823.8	1828.4	1844.5	1863.9	1894.3	1931.1	1983.1	2041.1
45°	1609.3	1598.1	1590.0	1589.7	1591.7	1600.1	1611.3	1630.3	1653.6	1686.0	1722.7
47.5°	1433.8	1431.1	1426.1	1426.3	1424.0	1427.5	1428.8	1439.4	1451.8	1476.2	1524.2
50°	1306.1	1306.1	1302.6	1302.4	1299.2	1299.0	1296.3	1300.5	1306.3	1321.4	1336.7
52.5°	1205.1	1204.7	1201.0	1200.2	1196.8	1196.6	1194.3	1196.0	1196.7	1204.3	1213.6
55°	1126.2	1123.8	1118.9	1117.3	1116.0	1118.0	1117.0	1117.1	1116.1	1119.4	1122.1
57.5°	1069.5	1066.5	1061.8	1060.4	1060.1	1062.4	1062.5	1061.7	1057.4	1054.5	1050.4
60°	1024.7	1021.6	1016.6	1015.3	1016.1	1019.3	1019.1	1016.4	1010.1	1004.6	998.1
62.5°	980.7	979.4	976.8	976.6	975.9	976.5	974.1	971.2	965.0	959.1	952.1
65°	921.6	922.2	920.4	920.7	918.3	918.0	914.5	911.7	905.4	900.1	892.9
67.5°	860.3	860.7	859.2	859.2	858.0	858.2	856.1	853.5	848.1	843.8	838.2
70°	809.7	811.0	810.1	810.3	808.9	808.4	805.1	802.6	797.0	793.4	788.5
72.5°	749.2	751.9	751.8	752.5	750.3	749.2	745.3	742.1	737.1	734.2	730.2
75°	683.9	687.5	688.4	690.0	686.9	685.2	680.9	678.4	674.3	672.6	670.0
77.5°	620.1	624.0	627.7	631.2	626.2	621.7	616.4	612.3	606.5	604.2	600.2
80°	548.5	555.4	563.6	570.5	561.6	552.5	543.7	537.2	529.5	526.3	521.2
82.5°	455.0	462.1	466.8	471.3	465.0	458.4	449.9	444.1	435.8	432.7	426.8
85°	345.7	354.5	357.3	359.7	355.7	352.2	344.1	333.3	328.1	319.8	315.5
87.5°	227.4	232.6	233.7	234.5	232.0	230.3	225.1	220.1	211.0	204.5	196.6
90°	96.3	99.4	96.9	97.7	95.1	96.0	91.2	90.0	83.1	80.9	74.7
92.5°	17.2	16.0	15.3	14.3	15.7	16.1	17.4	18.0	19.1	19.8	21.0
95°	22.8	21.7	20.7	19.7	20.5	21.3	22.2	23.0	23.8	24.6	25.4
97.5°	30.7	30.1	29.3	28.7	29.2	29.6	30.2	30.7	31.1	31.6	32.2
100°	38.9	38.4	37.8	37.3	37.3	37.3	37.3	37.3	37.3	37.3	37.3
102.5°	61.8	59.4	57.0	54.7	56.3	57.9	59.4	61.0	62.7	64.3	65.9
105°	115.0	108.5	102.0	95.6	101.8	108.1	114.4	120.6	126.9	133.3	139.7
107.5°	207.5	197.2	187.1	176.8	188.3	199.7	211.1	222.5	233.9	245.3	256.9
110°	309.2	299.5	289.7	280.1	292.2	304.3	316.4	328.5	340.6	352.7	365.0



TEST NUMBER: P1444810
 CATALOG NUMBER: EHBR1-30-UNV-TA-L940-UPL12

CANDELA DISTRIBUTION (continued):

	82.5°	85°	87.5°	90°	92.5°	95°	97.5°	100°	102.5°	105°	107.5°
112.5°	377.4	372.8	368.0	363.2	371.1	378.8	386.6	394.6	402.4	410.3	418.1
115°	395.7	395.4	395.1	394.8	398.6	402.2	405.9	409.6	413.5	417.1	421.0
117.5°	374.7	377.2	379.9	382.5	383.7	384.9	386.2	387.4	388.7	390.0	391.4
120°	337.1	340.3	343.9	347.4	346.9	346.5	346.0	345.5	345.4	345.0	344.8
122.5°	293.0	296.4	299.9	303.3	302.3	301.3	300.3	299.3	298.6	297.7	296.8
125°	252.3	255.0	257.9	260.8	259.7	258.7	257.7	256.9	256.1	255.3	254.6
127.5°	220.5	222.2	223.8	225.6	225.1	224.6	224.3	224.0	223.8	223.7	223.6
130°	199.6	200.2	201.0	201.7	201.9	202.0	202.4	202.6	203.2	203.6	204.3
132.5°	188.5	188.3	188.4	188.5	189.0	189.6	190.3	191.1	192.1	192.9	194.2
135°	183.3	182.8	182.5	182.2	183.1	183.8	184.8	185.9	187.1	188.4	189.8
137.5°	182.4	181.8	181.3	180.7	181.6	182.4	183.4	184.5	185.7	187.0	188.4
140°	183.8	183.2	182.9	182.3	183.2	183.9	184.9	186.0	187.2	188.5	189.9
142.5°	185.5	184.9	184.6	184.3	184.8	185.6	186.7	187.5	188.7	189.6	191.0
145°	189.1	188.6	188.4	188.0	188.5	189.0	189.7	190.4	191.2	191.9	193.0
147.5°	191.3	190.9	190.7	190.4	190.8	191.2	191.6	192.1	192.8	193.4	194.2
150°	192.9	192.5	192.3	192.2	192.4	192.6	192.9	193.1	193.6	194.0	194.6
152.5°	192.9	192.4	192.4	192.2	192.3	192.6	192.9	193.0	193.4	193.7	194.2
155°	193.4	193.1	192.9	192.6	192.6	192.5	192.7	192.6	192.9	192.9	193.1
157.5°	194.8	194.4	194.2	193.9	193.8	193.5	193.5	193.4	193.4	193.2	193.3
160°	195.8	195.5	195.1	194.7	194.6	194.4	194.4	194.2	194.2	194.2	194.2
162.5°	198.1	197.7	197.5	197.1	196.9	196.6	196.4	196.0	195.8	195.6	195.6
165°	200.1	199.7	199.4	198.9	198.8	198.6	198.3	198.2	198.1	197.9	197.8
167.5°	203.6	203.0	202.7	202.3	202.0	201.6	201.5	201.1	200.9	200.6	200.6
170°	205.8	205.4	205.1	204.8	204.6	204.3	204.2	204.0	203.9	203.8	203.8
172.5°	209.2	208.9	208.6	208.3	208.1	207.9	207.9	207.8	207.7	207.7	207.6
175°	211.6	211.4	211.3	211.2	211.0	210.9	210.8	210.7	210.6	210.5	210.5
177.5°	213.1	213.0	212.9	212.8	212.7	212.7	212.7	212.7	212.7	212.6	212.5
180°	212.9	212.9	212.9	212.9	212.9	212.9	212.9	212.9	212.9	212.9	212.9



TEST NUMBER: P1444810
 CATALOG NUMBER: EHBR1-30-UNV-TA-L940-UPL12

CANDELA DISTRIBUTION (continued):

	110°	112.5°	115°	117.5°	120°	122.5°	125°	127.5°	130°	132.5°	135°
0°	24483.0	24483.0	24483.0	24483.0	24483.0	24483.0	24483.0	24483.0	24483.0	24483.0	24483.0
2.5°	24496.5	24490.1	24473.1	24464.7	24449.1	24441.2	24429.0	24421.0	24411.2	24403.8	24400.0
5°	25175.2	25143.9	25081.1	25042.4	24974.7	24930.1	24862.7	24813.4	24743.9	24692.6	24626.9
7.5°	26058.3	26010.2	25929.8	25868.8	25774.0	25701.5	25595.1	25509.9	25392.4	25294.7	25174.6
10°	26417.8	26389.8	26353.6	26314.4	26261.9	26210.4	26137.7	26063.6	25965.0	25866.8	25738.5
12.5°	25886.4	25912.9	25965.0	25989.3	26029.1	26042.6	26060.8	26052.3	26036.1	25996.1	25937.9
15°	24381.5	24491.8	24666.1	24786.5	24955.3	25073.9	25230.8	25331.8	25448.2	25517.7	25583.7
17.5°	21906.1	22119.3	22426.8	22672.0	23001.3	23269.0	23597.0	23854.7	24152.2	24380.5	24623.5
20°	18735.4	19034.0	19458.3	19818.8	20295.9	20700.4	21218.8	21652.9	22159.4	22581.6	23037.3
22.5°	15322.9	15674.1	16160.3	16595.0	17164.8	17673.7	18323.0	18897.1	19581.9	20195.2	20873.8
25°	12103.5	12447.7	12943.1	13393.2	14008.2	14568.8	15278.2	15936.8	16731.4	17472.4	18323.0
27.5°	9342.7	9648.5	10083.9	10489.1	11052.4	11602.7	12322.7	13025.1	13872.9	14669.1	15585.9
30°	7215.2	7463.3	7812.2	8138.1	8590.3	9040.4	9681.8	10331.2	11174.9	12000.1	12939.9
32.5°	5591.6	5803.1	6094.4	6358.9	6707.4	7046.7	7519.0	8038.1	8778.1	9568.5	10477.2
35°	4328.5	4509.4	4757.4	4985.2	5271.8	5541.2	5893.7	6264.1	6828.9	7493.7	8306.9
37.5°	3450.9	3524.7	3701.6	3888.3	4126.4	4347.7	4623.4	4897.4	5301.4	5826.0	6490.3
40°	2624.4	2741.6	2885.5	3032.6	3212.8	3390.4	3692.9	3838.5	4104.5	4481.0	4996.7
42.5°	2117.5	2199.9	2301.3	2403.6	2529.1	2652.8	2805.7	2961.6	3160.4	3415.5	3782.3
45°	1772.0	1825.7	1891.1	1959.2	2041.7	2126.0	2228.5	2335.4	2470.3	2627.1	2849.8
47.5°	1541.1	1570.8	1613.5	1660.0	1716.6	1775.0	1841.6	1909.8	1993.5	2086.5	2213.3
50°	1360.9	1385.7	1418.9	1450.0	1489.0	1548.9	1575.3	1613.0	1663.3	1718.0	1788.9
52.5°	1230.6	1247.1	1267.9	1285.8	1310.5	1332.8	1362.3	1388.2	1423.0	1455.9	1501.7
55°	1129.1	1135.0	1146.9	1158.3	1175.4	1190.7	1210.9	1227.8	1250.1	1269.7	1298.6
57.5°	1050.6	1051.2	1056.7	1062.6	1073.6	1083.2	1097.1	1108.3	1123.7	1136.2	1153.6
60°	994.3	991.3	992.4	994.4	1000.7	1006.9	1015.8	1023.0	1032.7	1039.8	1049.6
62.5°	947.4	942.6	941.6	941.1	944.1	946.4	951.2	954.8	960.2	963.3	968.5
65°	888.1	882.6	880.4	877.9	878.8	878.1	879.8	879.9	882.7	883.4	886.4
67.5°	834.4	829.8	827.0	823.6	822.0	819.6	818.5	816.1	815.7	813.7	813.2
70°	785.4	780.9	778.5	775.3	773.7	770.5	768.4	764.4	762.1	758.4	756.3
72.5°	728.7	726.1	725.5	723.2	722.7	720.9	720.1	717.3	715.6	712.4	710.7
75°	669.5	667.3	667.2	665.0	664.8	662.7	662.1	659.1	657.6	654.4	653.0
77.5°	598.9	595.8	594.9	592.3	593.0	591.9	592.8	590.5	589.5	586.4	585.4
80°	519.4	515.4	513.7	510.4	511.3	509.8	511.3	511.1	512.3	509.8	509.3
82.5°	425.2	420.8	420.0	417.7	419.2	419.4	422.8	420.9	421.7	419.3	420.3
85°	309.4	306.1	301.6	301.0	298.0	301.1	297.2	299.8	295.5	298.5	294.5
87.5°	191.8	185.1	181.6	176.7	175.0	170.3	168.4	165.1	166.0	164.5	165.4
90°	73.8	68.4	67.7	63.5	63.7	60.2	61.1	58.8	60.3	57.9	59.6
92.5°	21.5	22.5	24.0	26.0	27.5	29.2	30.7	32.7	34.2	36.1	37.5
95°	26.3	27.1	29.3	31.6	33.8	36.1	38.3	40.5	42.8	45.0	47.2
97.5°	32.7	33.2	35.4	37.6	39.9	42.1	44.3	46.7	48.9	51.1	53.4
100°	37.3	37.4	43.7	50.0	56.4	62.8	69.0	75.4	81.9	88.2	94.6
102.5°	67.5	69.0	85.1	101.1	117.1	133.1	149.2	165.3	181.3	197.4	213.5
105°	145.9	152.2	176.6	201.1	225.6	250.1	274.5	299.1	323.6	348.1	372.6
107.5°	268.3	279.8	301.9	324.0	346.1	368.3	390.5	412.6	434.8	457.0	479.3
110°	377.1	389.3	404.1	419.1	434.0	448.8	463.8	478.7	493.7	508.6	523.6



TEST NUMBER: P1444810
 CATALOG NUMBER: EHBR1-30-UNV-TA-L940-UPL12

CANDELA DISTRIBUTION (continued):

	110°	112.5°	115°	117.5°	120°	122.5°	125°	127.5°	130°	132.5°	135°
112.5°	425.9	434.0	442.6	451.5	460.1	469.0	477.7	486.5	495.4	504.3	513.2
115°	424.8	428.7	432.0	435.6	439.1	442.7	446.3	450.0	453.7	457.3	461.1
117.5°	392.6	394.2	394.7	395.6	396.2	397.3	398.0	398.9	399.9	400.9	401.6
120°	344.5	344.3	344.1	343.7	343.4	343.2	343.1	342.9	342.9	342.8	342.7
122.5°	296.1	295.5	295.2	295.1	295.0	294.9	294.8	294.9	294.9	294.9	294.9
125°	254.0	253.4	254.2	255.2	256.1	257.1	258.1	259.2	260.2	261.3	262.4
127.5°	223.5	223.7	225.4	227.0	228.9	230.8	232.6	234.5	236.4	238.4	240.2
130°	205.0	205.8	207.9	210.1	212.2	214.6	216.8	219.1	221.3	223.6	225.8
132.5°	195.3	196.7	198.5	200.8	202.9	205.1	207.4	209.6	211.9	214.2	216.1
135°	191.3	192.8	194.7	196.8	198.8	201.0	202.9	205.1	207.1	209.2	211.1
137.5°	189.8	191.4	193.1	194.7	196.4	198.3	200.0	201.9	203.5	205.2	206.9
140°	191.3	192.8	193.8	195.2	196.3	197.6	198.5	199.9	201.0	202.4	203.4
142.5°	192.2	193.7	194.3	195.3	196.1	197.2	198.1	199.0	199.8	200.6	201.3
145°	194.0	195.1	195.5	195.9	196.4	196.9	197.2	197.6	197.9	198.3	198.6
147.5°	195.0	195.8	195.9	196.3	196.5	196.7	196.9	197.1	197.1	197.4	197.6
150°	195.1	195.7	195.6	195.7	195.6	195.7	195.6	195.7	195.6	195.7	195.6
152.5°	194.5	195.0	194.7	194.8	194.6	194.5	194.3	194.3	194.2	194.1	194.1
155°	193.1	193.4	193.2	193.2	193.0	193.0	192.9	193.0	192.9	192.9	192.9
157.5°	193.2	193.2	193.1	193.1	192.9	192.9	192.9	192.9	192.9	193.2	193.3
160°	194.2	194.2	194.0	194.0	193.9	193.8	193.8	193.9	193.9	194.2	194.3
162.5°	195.3	195.2	195.0	195.0	194.9	194.9	195.0	195.2	195.2	195.5	195.6
165°	197.8	197.9	197.6	197.6	197.5	197.4	197.4	197.4	197.6	197.7	197.9
167.5°	200.4	200.3	200.3	200.4	200.4	200.5	200.6	201.0	201.0	201.4	201.4
170°	203.8	203.8	203.7	203.7	203.7	203.7	203.7	203.7	203.8	203.8	203.8
172.5°	207.6	207.6	207.5	207.3	207.2	207.1	207.0	206.9	206.8	206.7	206.6
175°	210.3	210.2	210.1	210.1	210.0	209.8	209.8	209.5	209.4	209.4	209.3
177.5°	212.4	212.2	212.1	212.1	212.0	211.9	211.9	211.9	211.9	211.9	211.7
180°	212.9	212.9	212.9	212.9	212.9	212.9	212.9	212.9	212.9	212.9	212.9



TEST NUMBER: P1444810
 CATALOG NUMBER: EHBR1-30-UNV-TA-L940-UPL12

CANDELA DISTRIBUTION (continued):

	137.5°	140°	142.5°	145°	147.5°	150°	152.5°	155°	157.5°	160°	162.5°
0°	24483.0	24483.0	24483.0	24483.0	24483.0	24483.0	24483.0	24483.0	24483.0	24483.0	24483.0
2.5°	24395.0	24394.8	24392.4	24393.6	24394.0	24395.7	24397.8	24400.0	24400.4	24402.1	24402.5
5°	24577.6	24517.3	24472.7	24423.6	24386.7	24353.4	24331.3	24313.7	24306.9	24308.6	24312.7
7.5°	25072.7	24948.2	24845.3	24728.5	24631.0	24527.8	24442.3	24360.9	24301.7	24257.5	24232.8
10°	25616.0	25464.2	25319.1	25150.0	24989.5	24818.3	24663.2	24507.0	24376.9	24263.8	24180.8
12.5°	25857.1	25749.8	25624.3	25464.7	25293.1	25095.5	24896.0	24682.1	24483.2	24298.5	24149.7
15°	25601.8	25602.0	25556.2	25479.7	25360.4	25202.5	25012.4	24789.5	24554.8	24315.4	24096.6
17.5°	24791.6	24944.4	25029.4	25083.3	25066.7	25008.5	24887.6	24716.4	24497.6	24242.5	23975.6
20°	23400.0	23760.7	24017.7	24248.9	24378.5	24464.5	24456.0	24386.3	24230.5	24013.6	23735.6
22.5°	21450.9	22056.1	22533.6	22978.9	23291.2	23545.3	23666.1	23717.4	23646.7	23495.7	23234.7
25°	19083.4	19906.2	20608.5	21290.0	21801.2	22240.5	22504.6	22690.6	22705.4	22626.4	22393.5
27.5°	16452.6	17423.9	18312.7	19218.5	19937.4	20569.0	20983.4	21286.7	21383.0	21370.4	21158.9
30°	13825.2	14844.9	15824.7	16880.8	17770.4	18577.3	19124.7	19534.9	19693.0	19723.3	19519.8
32.5°	11343.9	12349.5	13326.4	14430.6	15409.6	16334.4	16981.1	17468.4	17652.3	17695.5	17472.4
35°	9092.0	10019.8	10948.1	12018.3	12991.6	13949.2	14630.7	15140.9	15312.6	15341.5	15083.2
37.5°	7139.2	7929.6	8738.6	9698.8	10592.6	11492.0	12139.5	12619.0	12744.0	12736.2	12443.9
40°	5494.9	6109.5	6759.5	7550.0	8293.0	9053.4	9600.1	9996.5	10062.1	10013.5	9706.4
42.5°	4131.8	4575.7	5047.0	5637.0	6188.5	6757.4	7155.2	7449.5	7458.8	7381.9	7106.2
45°	3078.3	3511.3	3708.9	4065.6	4420.8	4799.2	5042.1	5223.8	5195.7	5128.0	4918.5
47.5°	2346.6	2513.0	2689.6	2910.7	3117.7	3547.0	3515.2	3807.1	3596.8	3740.2	3424.6
50°	1863.5	1956.5	2051.6	2169.0	2277.0	2389.3	2459.5	2511.8	2505.0	2482.5	2422.0
52.5°	1585.4	1614.1	1660.9	1727.7	1788.1	1848.8	1888.7	1921.1	1921.8	1912.8	1882.1
55°	1325.0	1361.5	1395.1	1438.8	1513.1	1524.5	1581.8	1570.2	1574.8	1558.8	1575.1
57.5°	1168.3	1189.4	1208.4	1234.4	1255.9	1280.9	1295.7	1310.0	1308.6	1305.5	1290.0
60°	1057.1	1068.9	1079.4	1094.6	1106.3	1120.5	1127.3	1134.6	1132.2	1126.9	1113.0
62.5°	971.5	978.9	984.8	994.6	1001.8	1010.6	1014.2	1017.3	1014.2	1009.2	997.0
65°	887.0	891.8	895.6	903.0	908.0	915.5	918.5	921.4	918.6	914.7	905.4
67.5°	810.8	811.3	810.9	813.9	815.5	820.0	821.3	823.5	820.1	816.8	808.9
70°	753.0	751.8	750.4	751.6	751.8	754.0	754.4	754.0	750.2	744.3	735.7
72.5°	707.9	707.2	706.1	707.1	707.1	709.1	708.5	707.5	702.6	697.1	688.5
75°	649.7	649.4	647.1	647.2	645.4	646.0	643.7	642.4	637.0	632.2	624.7
77.5°	581.8	580.7	577.5	576.3	572.9	571.5	567.0	564.9	559.4	555.5	549.0
80°	506.0	504.8	500.7	498.4	492.9	489.5	483.0	479.2	473.0	469.3	462.9
82.5°	418.2	418.7	414.6	411.8	404.0	398.0	389.2	384.6	377.7	374.1	367.4
85°	297.5	293.2	295.4	295.2	290.4	285.2	278.1	273.2	267.3	263.8	259.3
87.5°	163.1	164.2	162.9	161.9	158.5	155.9	150.4	147.5	143.2	141.1	137.6
90°	54.9	54.2	49.7	49.1	44.7	42.7	37.6	36.2	31.6	30.7	27.5
92.5°	35.7	33.8	32.0	30.0	28.3	26.5	24.5	22.6	20.8	19.9	19.6
95°	44.5	41.9	39.2	36.5	33.7	31.0	28.4	25.7	23.0	22.5	21.9
97.5°	50.3	47.0	43.9	40.8	37.5	34.4	31.3	28.0	24.9	24.5	24.1
100°	87.3	79.9	72.6	65.2	57.9	50.5	43.2	35.9	28.6	28.2	27.8
102.5°	195.6	177.9	160.1	142.4	124.7	106.8	89.1	71.2	53.4	50.8	48.3
105°	345.6	318.6	291.9	265.0	237.9	211.0	184.2	157.1	130.2	121.6	112.9
107.5°	454.1	428.7	403.6	378.3	352.9	327.8	302.3	277.0	251.6	236.5	221.3
110°	503.6	483.5	463.7	443.6	423.6	403.6	383.6	363.5	343.5	330.4	317.4



TEST NUMBER: P1444810
 CATALOG NUMBER: EHBR1-30-UNV-TA-L940-UPL12

CANDELA DISTRIBUTION (continued):

	137.5°	140°	142.5°	145°	147.5°	150°	152.5°	155°	157.5°	160°	162.5°
112.5°	498.6	484.1	469.6	454.9	440.5	425.8	411.1	396.5	381.8	374.0	366.1
115°	452.4	443.7	435.2	426.5	417.8	409.2	400.5	391.7	382.9	378.9	374.9
117.5°	397.5	393.2	389.1	384.8	380.5	376.1	371.9	367.5	363.2	361.9	360.6
120°	341.9	340.9	339.7	338.7	337.6	336.5	335.3	334.2	333.0	333.4	333.9
122.5°	295.8	296.7	297.8	298.5	299.5	300.3	301.2	301.9	302.7	304.2	305.6
125°	264.1	265.8	267.7	269.3	271.0	272.6	274.5	276.0	277.7	279.1	280.7
127.5°	242.2	244.0	246.0	247.9	249.9	251.6	253.6	255.3	257.2	258.6	260.1
130°	227.6	229.3	231.1	232.8	234.5	236.3	237.9	239.7	241.4	242.6	243.9
132.5°	217.8	219.5	221.2	222.6	224.3	225.8	227.5	229.1	230.8	231.8	233.0
135°	212.6	213.8	215.1	216.3	217.8	219.0	220.4	221.7	223.2	224.2	225.2
137.5°	208.1	209.1	210.4	211.4	212.7	213.7	215.0	216.1	217.6	218.2	219.1
140°	204.4	205.5	206.7	207.9	209.1	210.1	211.6	212.8	214.2	214.8	215.7
142.5°	202.4	203.1	204.1	205.1	206.0	206.9	208.1	209.2	210.5	211.2	211.9
145°	199.7	200.6	201.7	202.6	203.6	204.7	206.1	207.3	208.6	209.2	209.9
147.5°	198.4	199.2	200.2	201.0	202.0	202.8	204.1	205.1	206.5	207.0	207.6
150°	196.6	197.3	198.3	199.0	200.0	201.0	202.3	203.4	204.8	205.3	206.0
152.5°	194.9	195.7	196.7	197.7	198.6	199.7	201.0	202.2	203.5	203.9	204.7
155°	193.9	194.6	195.6	196.7	197.7	198.6	199.8	201.0	202.2	202.9	203.5
157.5°	194.2	194.8	195.8	196.8	197.6	198.5	199.7	200.7	201.8	202.4	202.9
160°	195.1	195.8	196.7	197.6	198.3	199.3	200.2	201.1	202.1	202.6	203.2
162.5°	196.4	197.2	198.1	198.7	199.7	200.6	201.5	202.4	203.3	203.8	204.2
165°	198.5	199.2	199.8	200.4	201.0	201.6	202.4	203.1	203.9	204.3	204.9
167.5°	202.1	202.4	203.0	203.5	204.1	204.6	205.3	205.8	206.5	206.8	207.3
170°	204.3	204.8	205.1	205.6	206.2	206.6	207.1	207.6	208.2	208.6	209.0
172.5°	206.9	207.1	207.5	207.8	208.0	208.3	208.7	209.1	209.3	209.8	210.1
175°	209.6	209.6	209.8	209.9	210.0	210.2	210.5	210.6	210.7	211.0	211.2
177.5°	211.8	211.9	211.9	211.9	212.2	212.3	212.4	212.5	212.7	212.9	213.2
180°	212.9	212.9	212.9	212.9	212.9	212.9	212.9	212.9	212.9	212.9	212.9



TEST NUMBER: P1444810
 CATALOG NUMBER: EHBR1-30-UNV-TA-L940-UPL12

CANDELA DISTRIBUTION (continued):

	165°	167.5°	170°	172.5°	175°	177.5°	180°	182.5°	185°	187.5°	190°
0°	24483.0	24483.0	24483.0	24483.0	24483.0	24483.0	24483.0	24483.0	24483.0	24483.0	24483.0
2.5°	24401.7	24401.5	24400.6	24399.5	24398.4	24399.1	24400.2	24403.0	24407.9	24415.0	24424.2
5°	24316.0	24321.1	24323.9	24324.2	24321.6	24320.1	24322.5	24329.2	24342.7	24365.4	24396.1
7.5°	24226.2	24232.4	24241.8	24248.9	24250.3	24248.5	24248.9	24259.4	24284.4	24328.5	24390.6
10°	24130.3	24112.1	24121.7	24139.3	24153.3	24155.8	24157.6	24170.0	24206.5	24273.2	24372.8
12.5°	24041.8	23984.0	23972.9	23988.8	24010.0	24016.8	24014.9	24020.2	24063.0	24151.3	24290.1
15°	23925.2	23816.6	23779.5	23783.6	23809.8	23819.3	23812.4	23801.9	23843.5	23951.4	24130.9
17.5°	23736.7	23561.6	23493.3	23490.3	23521.0	23529.2	23512.3	23479.6	23520.6	23655.3	23878.3
20°	23450.1	23191.5	23063.1	23042.7	23075.9	23066.2	23032.6	22983.2	23037.1	23200.8	23465.9
22.5°	22934.8	22607.2	22387.7	22316.9	22356.8	22330.1	22281.0	22218.1	22289.6	22475.7	22770.9
25°	22092.8	21714.2	21413.8	21245.2	21276.9	21229.3	21175.8	21099.4	21184.8	21398.3	21723.4
27.5°	20855.1	20417.9	20045.5	19766.4	19776.7	19714.3	19652.7	19553.8	19660.4	19913.1	20279.7
30°	19209.3	18703.4	18249.9	17870.6	17836.7	17776.2	17713.1	17583.4	17716.7	18019.2	18447.6
32.5°	17142.5	16580.8	16056.8	15577.3	15486.8	15427.8	15371.6	15222.3	15396.8	15749.6	16241.7
35°	14725.4	14127.1	13559.0	13011.3	12861.5	12802.4	12753.3	12610.2	12828.1	13211.9	13743.4
37.5°	12072.4	11461.2	10897.2	10335.5	10123.7	10043.6	10007.9	9914.2	10165.7	10545.3	11078.9
40°	9348.7	8780.4	8274.8	7778.7	7537.3	7414.7	7396.0	7378.9	7622.0	7951.4	8435.8
42.5°	6800.8	6342.4	5952.5	5573.3	5354.4	5187.0	5186.9	5237.8	5456.6	5703.3	6076.9
45°	4704.3	4396.6	4148.2	3894.8	3962.6	3628.9	3825.0	3724.3	3832.4	3991.5	4234.4
47.5°	3233.7	3065.9	2929.4	2787.8	2684.6	2586.1	2594.7	2658.3	2760.1	2854.5	2980.9
50°	2356.9	2271.4	2201.9	2128.3	2077.0	2033.5	2036.0	2063.5	2117.1	2166.8	2233.0
52.5°	1846.8	1799.6	1761.8	1721.2	1694.2	1672.7	1673.8	1687.1	1716.1	1744.5	1782.4
55°	1522.2	1516.5	1467.4	1430.9	1417.0	1402.5	1405.1	1410.4	1430.1	1446.8	1471.8
57.5°	1275.6	1253.5	1238.8	1219.6	1210.8	1200.6	1202.9	1204.9	1218.0	1229.2	1247.3
60°	1101.5	1085.8	1075.4	1062.4	1056.6	1050.1	1051.5	1052.8	1061.1	1068.4	1081.4
62.5°	985.8	971.8	962.8	952.6	948.6	944.2	945.2	945.5	950.8	956.1	966.0
65°	897.0	886.0	878.4	869.7	865.4	860.9	861.4	861.4	865.8	869.7	877.1
67.5°	803.2	794.9	789.9	783.0	780.2	775.5	775.4	774.0	776.9	778.4	783.4
70°	727.9	719.4	713.2	706.6	702.9	698.8	698.9	699.0	702.4	705.9	712.3
72.5°	681.3	673.3	667.7	661.9	658.5	655.0	654.4	654.0	656.4	658.4	662.7
75°	619.7	613.3	610.0	604.5	601.8	597.9	597.3	595.5	596.7	597.1	600.3
77.5°	545.0	538.9	536.3	530.8	528.4	524.1	523.7	521.6	522.6	521.9	524.3
80°	459.8	454.3	452.8	448.2	447.2	443.1	442.4	440.0	440.7	438.8	439.7
82.5°	364.6	359.6	358.5	354.3	354.3	350.6	350.4	346.7	346.7	343.5	338.5
85°	256.9	253.1	251.6	248.2	247.2	244.2	242.6	239.1	237.8	235.5	234.9
87.5°	135.6	133.2	131.1	129.5	126.5	121.1	120.6	116.9	117.2	114.6	114.8
90°	26.9	24.0	23.7	21.1	20.4	18.5	18.2	18.0	18.3	18.3	18.7
92.5°	18.9	18.3	17.7	17.0	16.4	15.8	15.2	15.8	16.4	17.0	17.7
95°	21.3	20.8	20.3	19.8	19.2	18.6	18.1	18.6	19.2	19.8	20.4
97.5°	23.9	23.5	23.1	22.7	22.5	22.1	21.7	22.2	22.5	22.8	23.2
100°	27.4	26.9	26.6	26.1	25.7	25.2	24.9	25.4	25.9	26.3	26.7
102.5°	45.7	43.1	40.6	38.0	35.4	32.9	30.3	32.9	35.4	38.1	40.7
105°	104.2	95.6	86.9	78.3	69.5	60.8	52.2	60.9	69.6	78.4	87.1
107.5°	205.9	190.8	175.5	160.3	144.9	129.7	114.4	129.8	145.1	160.4	175.7
110°	304.3	291.1	278.0	264.9	251.7	238.6	225.4	238.7	251.9	265.1	278.3



TEST NUMBER: P1444810
 CATALOG NUMBER: EHBR1-30-UNV-TA-L940-UPL12

CANDELA DISTRIBUTION (continued):

	165°	167.5°	170°	172.5°	175°	177.5°	180°	182.5°	185°	187.5°	190°
112.5°	358.1	350.2	342.3	334.4	326.3	318.4	310.3	318.6	326.6	334.8	342.8
115°	370.7	366.6	362.6	358.5	354.2	350.1	345.8	350.4	354.7	359.1	363.3
117.5°	359.3	358.1	356.6	355.3	353.9	352.6	351.1	352.8	354.4	356.2	357.6
120°	334.2	334.7	335.0	335.3	335.7	336.0	336.1	336.3	336.3	336.3	336.2
122.5°	307.0	308.4	309.6	311.0	312.3	313.5	314.6	313.9	313.0	312.2	311.1
125°	282.0	283.7	285.0	286.5	287.8	289.2	290.2	289.6	288.8	287.9	286.8
127.5°	261.6	263.0	264.3	265.8	267.0	268.1	269.2	268.7	267.9	267.1	266.2
130°	245.1	246.5	247.5	248.7	249.7	250.6	251.4	251.2	250.7	250.3	249.6
132.5°	234.0	235.1	236.2	237.2	237.9	238.9	239.3	239.4	239.2	239.0	238.4
135°	226.0	226.9	227.8	228.8	229.3	229.9	230.3	230.6	230.5	230.5	230.1
137.5°	219.8	220.7	221.3	221.8	222.3	222.8	222.9	223.4	223.5	223.9	223.7
140°	216.4	217.3	217.9	218.5	219.1	219.6	219.8	220.2	220.4	220.5	220.4
142.5°	212.8	213.5	214.2	214.8	215.3	215.8	216.0	216.4	216.6	216.7	216.7
145°	210.6	211.2	211.8	212.4	212.7	213.1	213.2	213.7	213.9	214.2	214.3
147.5°	208.2	209.0	209.2	209.8	210.2	210.5	210.6	211.0	211.4	211.6	211.7
150°	206.8	207.5	208.0	208.5	209.1	209.4	209.5	210.0	210.2	210.3	210.3
152.5°	205.3	205.9	206.5	206.9	207.4	207.7	207.9	208.2	208.6	208.8	208.9
155°	204.0	204.7	205.2	205.8	206.2	206.6	206.9	207.3	207.6	207.8	207.9
157.5°	203.4	204.0	204.5	205.1	205.4	206.0	206.4	206.7	207.0	207.4	207.6
160°	203.6	204.2	204.6	205.1	205.6	206.1	206.5	206.8	207.2	207.5	207.9
162.5°	204.7	205.2	205.5	206.1	206.5	207.0	207.4	207.8	208.1	208.5	208.8
165°	205.3	205.9	206.4	206.9	207.4	207.9	208.3	208.6	208.8	209.2	209.3
167.5°	207.7	208.2	208.6	209.2	209.4	210.0	210.5	210.7	210.8	211.1	211.3
170°	209.2	209.7	210.1	210.5	210.9	211.3	211.6	211.8	212.0	212.2	212.4
172.5°	210.5	210.9	211.3	211.8	212.1	212.4	212.8	213.0	213.1	213.1	213.1
175°	211.5	211.9	212.1	212.4	212.7	213.0	213.3	213.3	213.4	213.3	213.4
177.5°	213.5	213.9	214.2	214.4	214.7	214.9	215.2	215.0	214.9	214.7	214.6
180°	212.9	212.9	212.9	212.9	212.9	212.9	212.9	212.9	212.9	212.9	212.9



TEST NUMBER: P1444810
 CATALOG NUMBER: EHBR1-30-UNV-TA-L940-UPL12

CANDELA DISTRIBUTION (continued):

	192.5°	195°	197.5°	200°	202.5°	205°	207.5°	210°	212.5°	215°	217.5°
0°	24483.0	24483.0	24483.0	24483.0	24483.0	24483.0	24483.0	24483.0	24483.0	24483.0	24483.0
2.5°	24437.2	24449.5	24468.2	24485.1	24510.7	24530.8	24561.1	24584.0	24618.1	24640.3	24677.3
5°	24439.5	24487.3	24550.2	24611.5	24685.3	24752.2	24835.4	24906.3	24990.0	25058.2	25143.7
7.5°	24474.0	24566.2	24676.7	24788.1	24914.0	25031.8	25164.5	25284.7	25415.9	25527.1	25648.5
10°	24499.5	24641.7	24804.6	24968.5	25140.9	25301.2	25463.0	25602.8	25733.4	25841.0	25936.0
12.5°	24464.9	24660.8	24869.8	25071.6	25263.4	25429.3	25568.5	25676.1	25750.2	25800.6	25812.4
15°	24347.4	24583.1	24810.4	25011.3	25170.5	25293.2	25356.8	25386.6	25354.6	25301.6	25185.1
17.5°	24127.9	24376.6	24579.7	24738.3	24822.4	24855.7	24803.0	24711.5	24532.6	24333.9	24047.1
20°	23725.6	23957.2	24104.6	24191.0	24168.5	24085.3	23886.6	23645.1	23287.8	22907.1	22404.7
22.5°	23019.7	23222.2	23300.7	23307.2	23169.8	22961.5	22603.1	22188.8	21625.3	21039.4	20318.8
25°	21960.2	22137.6	22150.0	22080.3	21829.0	21491.4	20965.1	20379.1	19613.3	18832.6	17929.6
27.5°	20523.2	20693.3	20651.7	20521.7	20172.9	19721.2	19047.3	18290.3	17346.1	16424.0	15425.2
30°	18716.9	18898.9	18850.0	18683.2	18268.4	17734.3	16941.5	16061.8	15013.7	14028.8	13016.7
32.5°	16555.3	16785.4	16751.5	16593.1	16160.1	15588.7	14728.4	13795.4	12723.0	11752.5	10768.0
35°	14098.3	14377.6	14392.1	14288.5	13886.5	13321.7	12472.2	11569.3	10542.0	9626.3	8716.8
37.5°	11451.2	11775.1	11841.5	11813.5	11480.5	10981.9	10207.9	9397.8	8487.9	7685.2	6907.3
40°	8789.5	9117.3	9230.9	9264.7	9018.9	8632.7	7997.4	7343.6	6601.7	5951.4	5333.8
42.5°	6362.1	6652.7	6762.5	6831.7	6678.2	6420.7	5957.3	5482.5	4939.0	4469.9	4020.2
45°	4418.6	4624.1	4707.7	4777.3	4693.7	4548.5	4255.9	3958.8	3600.1	3293.6	3003.4
47.5°	3089.3	3202.6	3257.8	3291.6	3259.2	3183.4	3024.2	2852.1	2649.6	2470.5	2298.3
50°	2289.8	2350.2	2379.1	2398.5	2375.0	2332.8	2246.7	2153.0	2041.8	1940.3	1841.1
52.5°	1814.7	1849.2	1866.4	1876.9	1863.4	1837.6	1787.5	1731.9	1665.2	1602.5	1569.5
55°	1528.7	1527.0	1566.6	1547.5	1566.6	1523.8	1514.9	1453.8	1398.4	1359.5	1317.3
57.5°	1260.7	1278.7	1286.3	1294.8	1289.3	1281.5	1260.1	1238.3	1209.1	1184.7	1158.6
60°	1091.3	1106.0	1114.4	1122.9	1122.4	1119.5	1107.1	1094.0	1075.8	1061.1	1045.4
62.5°	974.6	987.4	995.6	1003.8	1004.5	1003.3	994.0	984.8	972.5	963.2	952.4
65°	882.7	891.8	897.4	903.8	903.5	901.7	893.3	885.8	875.6	869.1	861.2
67.5°	786.7	793.5	797.9	803.9	805.1	805.5	800.8	797.3	792.3	790.5	787.8
70°	718.4	726.6	733.6	741.3	745.5	747.5	745.5	743.6	740.8	739.5	737.4
72.5°	666.7	673.7	679.1	686.1	690.0	692.8	691.2	690.3	687.7	687.4	685.9
75°	602.4	607.2	610.3	615.5	617.7	620.3	619.1	619.7	618.9	620.9	620.8
77.5°	525.2	528.7	530.2	534.0	534.4	537.6	538.2	541.9	544.6	550.4	553.5
80°	438.2	440.5	440.5	444.4	446.2	451.5	454.1	460.1	462.9	468.2	468.5
82.5°	340.4	337.8	340.4	338.8	343.8	349.8	350.6	355.8	356.9	360.3	357.7
85°	232.7	232.5	230.5	230.9	229.3	230.0	229.1	230.1	229.2	229.3	226.9
87.5°	111.5	112.5	110.0	110.9	108.5	109.7	107.5	109.2	106.7	107.0	103.4
90°	18.8	19.1	19.3	19.7	20.3	21.2	22.5	23.5	25.0	25.9	27.2
92.5°	18.3	19.0	19.7	20.2	20.9	22.7	24.6	26.6	28.5	30.3	32.1
95°	20.9	21.4	22.0	22.7	23.3	26.0	28.7	31.4	34.1	36.9	39.6
97.5°	23.8	24.1	24.4	24.8	25.2	28.4	31.7	34.8	38.0	41.3	44.3
100°	27.2	27.7	28.0	28.6	29.0	36.3	43.7	51.1	58.4	65.8	73.1
102.5°	43.3	45.9	48.5	51.2	53.8	71.7	89.6	107.4	125.1	143.0	160.8
105°	95.8	104.4	113.4	122.0	130.7	157.7	184.8	211.9	238.7	265.7	292.7
107.5°	191.1	206.4	221.8	237.1	252.4	277.8	303.2	328.5	353.9	379.4	404.5
110°	291.7	304.7	318.1	331.3	344.5	364.6	384.8	404.8	424.9	445.0	465.1



TEST NUMBER: P1444810
 CATALOG NUMBER: EHBR1-30-UNV-TA-L940-UPL12

CANDELA DISTRIBUTION (continued):

	192.5°	195°	197.5°	200°	202.5°	205°	207.5°	210°	212.5°	215°	217.5°
112.5°	351.0	359.0	367.1	374.9	383.0	397.7	412.5	427.3	442.1	456.5	471.2
115°	367.6	371.6	376.0	380.1	384.4	393.2	402.0	410.9	419.7	428.5	437.3
117.5°	359.1	360.6	362.1	363.3	364.8	369.3	373.9	378.2	382.7	387.2	391.6
120°	336.1	335.9	335.7	335.3	335.1	336.3	337.7	338.9	340.2	341.4	342.5
122.5°	310.1	308.8	307.7	306.5	305.3	304.5	303.9	303.1	302.5	301.7	300.9
125°	285.7	284.4	283.2	281.9	280.5	279.0	277.5	276.0	274.4	272.8	271.2
127.5°	265.3	264.1	263.1	261.8	260.6	258.7	257.0	255.2	253.6	251.7	250.0
130°	248.9	248.0	247.2	246.0	245.2	243.4	241.9	240.3	238.6	237.0	235.4
132.5°	237.9	237.2	236.5	235.5	234.8	233.2	232.0	230.3	228.8	227.2	225.8
135°	229.8	229.3	229.0	228.3	227.6	226.2	225.1	223.8	222.7	221.5	220.2
137.5°	223.7	223.2	222.9	222.5	222.2	221.0	220.1	218.8	217.9	216.7	215.9
140°	220.3	220.1	219.8	219.4	218.9	217.8	216.9	215.7	214.7	213.5	212.5
142.5°	216.5	216.3	216.0	215.7	215.3	214.3	213.6	212.8	211.9	211.0	210.2
145°	214.2	214.0	214.0	213.6	213.5	212.5	211.7	210.6	209.9	208.9	208.0
147.5°	211.9	211.7	211.7	211.6	211.6	210.6	210.1	209.2	208.6	207.8	207.2
150°	210.4	210.4	210.3	210.1	210.0	209.2	208.7	207.9	207.3	206.5	205.9
152.5°	209.0	209.1	209.1	209.1	209.2	208.5	207.9	207.1	206.5	205.7	205.1
155°	208.1	208.2	208.3	208.3	208.3	207.8	207.2	206.5	206.0	205.3	204.8
157.5°	207.8	207.9	208.1	208.2	208.3	207.9	207.4	206.8	206.4	205.8	205.3
160°	208.0	208.3	208.5	208.6	208.8	208.4	208.1	207.6	207.3	206.7	206.2
162.5°	209.1	209.3	209.5	209.6	209.8	209.4	209.2	208.8	208.3	207.8	207.3
165°	209.6	209.6	209.9	209.9	210.0	209.7	209.5	209.2	209.0	208.7	208.4
167.5°	211.5	211.5	211.8	211.8	211.9	211.7	211.8	211.4	211.2	211.0	210.8
170°	212.6	212.7	212.7	212.8	212.9	212.7	212.5	212.3	212.3	211.9	211.7
172.5°	213.2	213.2	213.2	213.3	213.2	213.1	213.0	212.9	212.8	212.7	212.5
175°	213.3	213.3	213.3	213.3	213.3	213.3	213.3	213.3	213.2	213.2	213.1
177.5°	214.6	214.5	214.2	214.1	214.0	213.9	213.9	213.9	214.0	213.9	213.8
180°	212.9	212.9	212.9	212.9	212.9	212.9	212.9	212.9	212.9	212.9	212.9



TEST NUMBER: P1444810
 CATALOG NUMBER: EHBR1-30-UNV-TA-L940-UPL12

CANDELA DISTRIBUTION (continued):

	220°	222.5°	225°	227.5°	230°	232.5°	235°	237.5°	240°	242.5°	245°
0°	24483.0	24483.0	24483.0	24483.0	24483.0	24483.0	24483.0	24483.0	24483.0	24483.0	24483.0
2.5°	24700.3	24547.8	24527.6	24538.3	24563.9	24573.3	24600.8	24608.3	24636.0	24642.8	24669.4
5°	25210.0	25008.3	25018.4	25066.9	25140.3	25184.1	25256.2	25293.9	25362.7	25394.0	25456.4
7.5°	25747.4	25589.0	25638.4	25720.2	25820.6	25890.1	25976.7	26033.2	26107.9	26154.2	26214.0
10°	26011.3	25967.9	26022.3	26086.6	26143.8	26188.7	26225.5	26254.8	26274.1	26292.2	26300.0
12.5°	25810.5	25877.7	25886.9	25880.6	25842.7	25813.8	25748.7	25704.5	25626.0	25578.2	25484.8
15°	25066.1	25213.7	25132.0	25008.2	24827.1	24676.1	24462.9	24304.1	24082.0	23931.5	23708.6
17.5°	23759.7	23946.0	23733.0	23446.6	23082.3	22770.6	22382.5	22074.5	21688.6	21407.9	21047.8
20°	21920.5	22094.6	21714.7	21239.9	20676.4	20202.1	19642.8	19196.6	18676.9	18290.3	17823.7
22.5°	19630.6	19754.6	19219.4	18579.3	17861.4	17268.9	16600.2	16065.2	15472.0	15030.1	14532.6
25°	17097.2	17130.7	16488.6	15751.3	14951.0	14285.2	13571.3	13008.8	12403.8	11955.9	11467.6
27.5°	14540.2	14491.2	13797.2	13015.4	12173.6	11481.5	10785.2	10258.1	9728.2	9324.7	8904.1
30°	12126.8	12008.0	11287.4	10483.8	9666.8	9046.4	8468.3	8045.0	7623.6	7303.4	6965.8
32.5°	9913.6	9745.9	9044.6	8291.7	7603.3	7124.5	6695.8	6375.5	6035.2	5764.8	5481.4
35°	7953.4	7774.7	7153.4	6515.1	5994.0	5641.1	5304.2	5041.4	4752.4	4524.4	4278.2
37.5°	6271.0	6124.5	5604.1	5101.9	4707.7	4434.3	4158.2	3943.5	3704.6	3604.3	3341.3
40°	4841.2	4738.8	4331.9	3961.6	3665.7	3537.2	3257.0	3056.4	2877.9	2730.7	2588.2
42.5°	3776.2	3740.0	3344.0	3055.2	2846.7	2684.9	2528.8	2402.0	2278.6	2177.2	2081.3
45°	2771.2	2742.5	2566.7	2400.0	2258.0	2144.8	2039.3	1952.1	1871.5	1804.6	1743.8
47.5°	2157.9	2148.7	2047.5	1944.2	1854.6	1782.0	1713.5	1655.6	1602.1	1557.4	1542.9
50°	1755.1	1753.9	1694.5	1630.8	1567.0	1525.0	1481.3	1447.0	1412.7	1385.9	1357.6
52.5°	1491.3	1484.9	1444.7	1405.3	1367.5	1339.9	1311.9	1290.1	1267.3	1250.8	1233.2
55°	1283.8	1290.6	1267.4	1243.9	1220.3	1203.1	1183.5	1169.0	1153.5	1143.0	1132.4
57.5°	1139.8	1148.7	1136.6	1123.2	1108.8	1097.6	1084.1	1074.1	1063.7	1057.0	1050.8
60°	1035.0	1044.7	1039.8	1033.1	1024.3	1017.5	1008.9	1003.4	996.7	992.9	989.5
62.5°	946.0	958.3	956.5	953.4	947.7	943.9	939.2	936.8	932.3	930.7	929.0
65°	857.3	871.1	870.8	869.2	866.1	865.0	862.1	861.6	859.3	860.2	860.0
67.5°	787.5	799.4	802.1	804.0	803.9	804.7	804.4	805.6	805.6	807.3	808.4
70°	737.1	745.5	747.5	749.5	750.1	751.7	751.7	752.7	752.4	753.9	754.0
72.5°	686.3	697.2	699.2	700.9	700.9	702.4	701.6	701.3	699.1	698.6	697.2
75°	622.9	637.0	640.0	642.1	642.4	643.7	641.8	640.6	637.0	635.5	633.0
77.5°	556.8	571.4	573.5	574.3	573.1	573.3	569.3	566.6	562.1	560.1	557.7
80°	470.7	492.2	493.9	492.6	489.2	488.6	484.7	482.2	476.6	474.8	472.6
82.5°	358.1	383.4	386.9	388.4	385.7	386.4	382.6	381.2	376.1	375.2	371.8
85°	226.1	251.4	255.6	254.9	252.2	251.5	249.3	250.1	249.6	251.0	251.7
87.5°	103.9	128.3	134.2	132.3	132.0	130.3	126.4	127.8	130.2	131.7	131.8
90°	28.3	36.9	37.8	37.5	34.8	34.2	31.7	31.6	29.4	29.2	27.1
92.5°	34.1	36.0	37.8	36.1	34.5	32.8	31.1	29.3	27.8	26.0	24.4
95°	42.3	44.8	47.5	45.3	42.9	40.7	38.5	36.3	34.1	31.9	29.6
97.5°	47.5	50.6	53.7	51.4	49.2	46.9	44.6	42.5	40.2	37.9	35.7
100°	80.5	87.5	94.7	88.4	82.0	75.6	69.3	63.1	56.7	50.4	44.0
102.5°	178.5	196.1	213.8	197.7	181.7	165.6	149.5	133.5	117.5	101.3	85.3
105°	319.6	346.2	373.0	348.3	323.8	299.3	274.8	250.4	225.9	201.3	176.9
107.5°	429.9	454.6	479.7	457.4	435.3	413.1	390.8	368.7	346.5	324.2	302.1
110°	485.1	504.3	524.1	509.1	494.1	479.1	464.2	449.1	434.2	419.4	404.5



TEST NUMBER: P1444810
 CATALOG NUMBER: EHBR1-30-UNV-TA-L940-UPL12

CANDELA DISTRIBUTION (continued):

	220°	222.5°	225°	227.5°	230°	232.5°	235°	237.5°	240°	242.5°	245°
112.5°	485.9	499.5	513.8	504.8	495.9	487.1	478.2	469.3	460.5	451.8	443.1
115°	445.9	453.3	461.7	458.0	454.4	450.6	446.9	443.4	439.6	436.0	432.6
117.5°	395.9	398.7	402.7	401.6	400.7	399.7	398.7	397.9	397.1	396.2	395.4
120°	343.7	343.2	343.9	343.8	344.0	344.0	344.1	344.1	344.3	344.4	344.7
122.5°	300.1	297.5	296.1	296.0	296.1	295.9	296.0	295.9	296.0	296.1	296.3
125°	269.5	265.9	263.7	262.6	261.6	260.5	259.4	258.3	257.4	256.4	255.5
127.5°	248.1	244.2	241.8	239.9	238.1	236.1	234.2	232.3	230.6	228.5	226.9
130°	233.8	229.8	227.6	225.3	223.2	220.8	218.7	216.4	214.2	211.9	209.7
132.5°	224.3	220.2	218.2	216.0	214.0	211.8	209.7	207.3	205.1	202.9	200.9
135°	218.9	215.1	213.3	211.2	209.4	207.3	205.2	203.3	201.3	199.1	197.3
137.5°	214.7	210.8	209.2	207.4	206.0	204.2	202.6	200.9	199.2	197.3	195.8
140°	211.3	207.4	205.7	204.7	203.7	202.4	201.4	200.3	199.2	198.1	196.9
142.5°	209.2	205.3	203.8	203.1	202.4	201.5	201.0	200.1	199.5	198.3	197.6
145°	207.1	202.7	201.1	200.8	200.7	200.3	200.0	199.7	199.4	198.9	198.6
147.5°	206.3	201.8	200.1	200.0	199.9	199.8	199.8	199.6	199.6	199.4	199.3
150°	205.0	199.9	198.1	198.2	198.2	198.3	198.3	198.4	198.6	198.6	198.7
152.5°	204.2	198.2	196.0	196.1	196.4	196.4	196.7	196.9	197.1	197.3	197.5
155°	203.9	197.3	195.0	194.9	194.9	195.1	195.1	195.3	195.4	195.6	195.7
157.5°	204.6	197.6	195.4	195.2	195.1	195.1	195.1	195.1	195.2	195.3	195.5
160°	205.7	198.6	196.4	196.1	196.1	196.0	195.9	195.8	195.9	196.0	196.1
162.5°	206.7	199.8	197.7	197.4	197.1	197.1	197.1	196.9	196.9	196.9	197.0
165°	207.9	201.9	199.8	199.6	199.6	199.4	199.4	199.3	199.5	199.5	199.7
167.5°	210.4	205.0	203.4	203.1	202.8	202.5	202.5	202.2	202.2	202.0	202.0
170°	211.4	207.1	205.7	205.6	205.7	205.5	205.4	205.4	205.4	205.2	205.3
172.5°	212.3	209.2	208.1	208.1	208.3	208.3	208.5	208.5	208.7	208.8	209.0
175°	213.0	211.1	210.6	210.6	210.6	210.6	210.7	210.7	210.8	210.9	211.1
177.5°	213.9	213.3	213.1	213.1	213.1	213.1	213.1	213.1	213.1	213.2	213.2
180°	212.9	212.9	212.9	212.9	212.9	212.9	212.9	212.9	212.9	212.9	212.9



TEST NUMBER: P1444810
 CATALOG NUMBER: EHBR1-30-UNV-TA-L940-UPL12

CANDELA DISTRIBUTION (continued):

	247.5°	250°	252.5°	255°	257.5°	260°	262.5°	265°	267.5°	270°	272.5°
0°	24483.0	24483.0	24483.0	24483.0	24483.0	24483.0	24483.0	24483.0	24483.0	24483.0	24483.0
2.5°	24674.4	24703.1	24701.0	24727.8	24726.4	24751.8	24746.6	24768.5	24763.6	24782.2	24771.2
5°	25483.8	25538.5	25556.5	25605.9	25616.2	25660.3	25661.2	25696.4	25692.1	25719.6	25704.9
7.5°	26249.4	26300.4	26324.7	26363.1	26382.2	26414.0	26426.4	26452.6	26458.8	26474.2	26473.7
10°	26314.0	26313.8	26325.8	26320.4	26331.1	26324.9	26338.0	26333.3	26352.6	26347.7	26362.2
12.5°	25444.5	25358.3	25326.8	25249.3	25232.3	25165.8	25170.5	25127.9	25148.5	25122.3	25166.9
15°	23576.0	23375.8	23276.9	23102.9	23048.3	22910.7	22899.6	22808.2	22832.9	22785.1	22854.9
17.5°	20814.8	20499.6	20326.7	20072.6	19971.7	19777.2	19738.1	19620.5	19638.7	19579.5	19663.9
20°	17522.7	17141.8	16923.7	16629.8	16498.7	16266.8	16205.2	16073.7	16090.2	16031.2	16126.7
22.5°	14193.0	13794.4	13548.1	13240.1	13072.7	12854.6	12789.1	12656.9	12664.4	12609.1	12700.9
25°	11133.2	10751.0	10511.9	10232.2	10086.8	9886.9	9818.1	9699.5	9706.2	9660.5	9742.9
27.5°	8612.3	8298.7	8098.7	7864.2	7734.0	7569.5	7502.4	7402.7	7402.4	7368.9	7437.8
30°	6730.0	6468.3	6288.8	6084.6	5962.3	5813.8	5749.1	5659.8	5655.9	5632.2	5686.9
32.5°	5269.5	5036.8	4873.0	4693.2	4583.4	4456.1	4394.8	4323.0	4316.4	4295.0	4339.9
35°	4096.4	3900.3	3759.5	3608.2	3619.3	3431.5	3462.7	3316.8	3277.2	3268.6	3302.0
37.5°	3166.0	3014.2	2899.7	2786.5	2709.7	2630.3	2587.6	2549.2	2544.8	2541.1	2564.5
40°	2478.1	2371.9	2288.7	2210.9	2158.1	2109.6	2082.9	2061.8	2056.8	2054.0	2068.2
42.5°	2005.6	1934.0	1880.3	1832.9	1800.8	1774.4	1759.8	1748.0	1744.1	1744.2	1752.6
45°	1694.5	1651.1	1616.5	1587.0	1566.5	1575.5	1549.0	1562.8	1544.5	1563.5	1551.0
47.5°	1492.2	1455.2	1433.8	1412.9	1400.5	1390.6	1390.9	1391.1	1395.0	1395.6	1399.7
50°	1336.2	1314.7	1299.9	1286.6	1280.1	1274.9	1276.6	1278.0	1281.9	1282.1	1285.1
52.5°	1220.6	1206.6	1197.6	1189.3	1186.5	1183.5	1184.8	1184.2	1185.9	1185.1	1187.5
55°	1126.6	1120.0	1117.2	1114.2	1114.6	1113.8	1114.3	1111.4	1109.5	1107.3	1109.3
57.5°	1049.6	1048.7	1050.5	1051.8	1055.4	1056.7	1057.4	1054.0	1050.7	1047.7	1049.5
60°	990.2	991.6	996.3	1000.1	1005.2	1007.6	1009.0	1007.0	1004.6	1002.2	1003.7
62.5°	931.5	933.8	939.4	943.7	949.8	953.0	956.5	956.7	957.6	956.7	957.7
65°	863.4	866.2	871.4	874.9	880.6	883.4	887.0	887.7	889.7	889.3	890.9
67.5°	811.7	814.3	818.5	821.9	827.0	829.9	833.1	833.3	834.0	833.8	835.4
70°	756.6	757.8	761.6	764.4	769.5	772.5	776.2	777.3	779.5	779.9	781.7
72.5°	697.8	697.2	699.5	700.8	704.6	706.9	711.6	714.1	717.9	719.0	720.3
75°	633.7	633.1	635.8	637.0	640.2	642.6	647.8	651.1	657.0	659.5	658.9
77.5°	559.5	560.9	565.9	568.8	573.1	576.1	582.8	588.1	599.0	603.7	598.9
80°	476.6	478.0	483.2	485.9	491.6	495.3	502.8	509.1	518.7	520.8	518.1
82.5°	374.7	375.1	379.8	381.8	389.2	394.6	404.1	409.2	415.1	414.2	413.5
85°	255.6	259.0	264.9	270.7	279.9	288.5	297.6	304.9	299.7	308.0	298.7
87.5°	136.6	136.2	144.2	142.9	155.6	162.9	170.8	174.5	178.7	177.9	177.9
90°	27.2	25.6	26.1	24.4	25.5	23.6	25.3	23.7	25.8	23.6	27.2
92.5°	22.6	21.8	20.9	20.0	19.0	18.3	17.2	16.3	15.5	14.5	15.5
95°	27.4	26.6	25.7	24.8	23.9	23.2	22.4	21.5	20.7	19.8	20.9
97.5°	33.4	33.0	32.5	32.0	31.5	31.0	30.6	30.0	29.4	29.0	29.6
100°	37.6	37.6	37.6	37.6	37.5	37.5	37.5	37.5	37.5	37.5	38.0
102.5°	69.2	67.6	66.1	64.4	62.8	61.1	59.5	57.9	56.4	54.8	57.1
105°	152.4	146.2	139.8	133.5	127.2	120.9	114.7	108.4	102.1	95.9	102.3
107.5°	280.1	268.6	257.0	245.7	234.2	222.8	211.4	200.0	188.6	177.2	187.4
110°	389.6	377.4	365.2	353.1	340.9	328.8	316.7	304.6	292.4	280.3	290.0



TEST NUMBER: P1444810
 CATALOG NUMBER: EHBR1-30-UNV-TA-L940-UPL12

CANDELA DISTRIBUTION (continued):

	247.5°	250°	252.5°	255°	257.5°	260°	262.5°	265°	267.5°	270°	272.5°
112.5°	434.3	426.2	418.4	410.5	402.6	394.8	386.9	379.1	371.4	363.5	368.3
115°	428.9	425.1	421.3	417.5	413.8	409.9	406.2	402.5	398.8	395.1	395.4
117.5°	394.6	393.2	391.9	390.5	389.1	387.8	386.5	385.3	384.1	383.0	380.4
120°	345.1	345.2	345.3	345.6	345.9	346.3	346.5	347.0	347.5	348.0	344.4
122.5°	296.4	296.9	297.6	298.4	299.2	300.0	300.8	301.9	303.0	304.0	300.5
125°	254.4	255.0	255.6	256.4	256.9	257.9	258.7	259.8	260.8	261.9	258.9
127.5°	225.1	225.0	224.9	225.1	225.1	225.4	225.6	226.1	226.6	227.1	225.3
130°	207.5	206.7	206.1	205.4	204.8	204.4	204.1	203.8	203.6	203.5	202.7
132.5°	198.6	197.4	196.2	195.2	194.2	193.3	192.4	191.8	191.2	190.7	190.5
135°	195.2	193.7	192.2	190.8	189.4	188.5	187.4	186.5	185.6	184.8	185.1
137.5°	194.1	192.7	191.2	189.9	188.5	187.4	186.2	185.3	184.5	183.7	184.2
140°	195.8	194.3	192.9	191.5	190.3	189.2	188.1	187.3	186.2	185.7	186.0
142.5°	196.8	195.6	194.2	193.0	191.9	191.0	190.1	189.2	188.3	187.8	188.1
145°	198.3	197.3	196.3	195.4	194.5	194.0	193.0	192.6	192.0	191.7	191.9
147.5°	199.0	198.4	197.5	196.9	196.1	195.7	195.1	194.8	194.3	194.2	194.2
150°	198.7	198.3	197.8	197.4	196.9	196.7	196.3	196.1	195.8	195.7	195.7
152.5°	197.7	197.4	196.9	196.7	196.3	196.1	195.8	195.7	195.6	195.5	195.5
155°	195.9	195.7	195.6	195.5	195.4	195.5	195.4	195.5	195.5	195.6	195.6
157.5°	195.6	195.6	195.6	195.7	195.7	195.9	195.9	196.2	196.3	196.6	196.8
160°	196.4	196.5	196.3	196.5	196.5	196.6	196.7	196.9	196.9	197.1	197.4
162.5°	197.1	197.4	197.5	197.6	197.9	198.1	198.3	198.7	198.9	199.3	199.6
165°	199.7	199.7	199.7	199.7	199.9	200.0	200.1	200.5	200.6	200.9	201.2
167.5°	201.9	202.1	202.1	202.2	202.4	202.6	202.8	203.1	203.4	203.8	204.1
170°	205.2	205.2	205.2	205.2	205.2	205.4	205.5	205.6	205.7	206.0	206.2
172.5°	209.0	209.0	208.8	209.0	208.8	209.0	209.0	209.1	209.1	209.2	209.2
175°	211.0	211.3	211.4	211.5	211.5	211.6	211.7	211.7	211.8	211.9	211.9
177.5°	213.2	213.3	213.3	213.3	213.3	213.3	213.3	213.3	213.3	213.3	213.3
180°	212.9	212.9	212.9	212.9	212.9	212.9	212.9	212.9	212.9	212.9	212.9



TEST NUMBER: P1444810
 CATALOG NUMBER: EHBR1-30-UNV-TA-L940-UPL12

CANDELA DISTRIBUTION (continued):

	275°	277.5°	280°	282.5°	285°	287.5°	290°	292.5°	295°	297.5°	300°
0°	24483.0	24483.0	24483.0	24483.0	24483.0	24483.0	24483.0	24483.0	24483.0	24483.0	24483.0
2.5°	24789.5	24777.1	24789.8	24776.9	24789.8	24774.3	24784.8	24768.1	24772.4	24755.0	24759.5
5°	25726.8	25707.1	25717.6	25691.9	25694.6	25660.3	25659.7	25619.8	25609.3	25563.8	25543.8
7.5°	26484.7	26478.3	26481.9	26465.4	26463.5	26440.1	26428.9	26395.9	26375.2	26333.3	26304.7
10°	26364.8	26384.1	26389.1	26408.8	26412.9	26432.4	26436.5	26456.0	26460.0	26474.5	26474.7
12.5°	25164.8	25230.4	25246.1	25327.2	25361.3	25454.0	25503.7	25605.9	25666.6	25768.5	25831.1
15°	22853.0	22966.6	23011.8	23170.0	23257.6	23442.3	23558.4	23770.6	23920.3	24145.6	24306.3
17.5°	19671.3	19829.9	19901.5	20116.1	20256.1	20528.8	20725.3	21048.8	21296.4	21655.9	21940.8
20°	16143.0	16319.4	16416.5	16661.3	16826.5	17145.1	17390.5	17788.0	18119.5	18575.0	18964.5
22.5°	12729.6	12897.4	13005.3	13254.4	13440.4	13772.7	14046.9	14466.5	14837.9	15351.2	15818.1
25°	9774.0	9927.7	10025.3	10250.5	10425.2	10730.5	10992.4	11395.9	11759.3	12274.2	12753.1
27.5°	7472.1	7600.8	7694.8	7886.9	8041.0	8299.9	8524.9	8858.4	9171.5	9616.9	10043.4
30°	5720.5	5834.6	5926.1	6093.4	6236.2	6460.8	6658.6	6938.6	7197.8	7552.2	7891.5
32.5°	4371.5	4469.7	4551.2	4697.6	4827.2	5029.4	5207.6	5453.1	5675.5	5976.1	6255.3
35°	3333.1	3526.4	3512.7	3714.7	3747.2	3892.2	4051.3	4265.9	4462.9	4718.5	4956.1
37.5°	2587.0	2641.3	2699.6	2788.9	2882.7	3014.7	3149.1	3411.3	3507.6	3700.7	3897.4
40°	2086.1	2122.8	2161.3	2221.7	2287.4	2380.4	2478.2	2603.3	2731.6	2888.2	3048.2
42.5°	1763.7	1784.5	1809.0	1844.4	1884.9	1943.9	2009.3	2094.2	2183.3	2293.5	2406.1
45°	1575.7	1565.8	1573.1	1592.2	1616.6	1652.4	1693.7	1746.3	1804.3	1875.7	1951.8
47.5°	1400.5	1404.5	1406.7	1417.0	1430.1	1454.1	1479.2	1514.9	1583.7	1604.7	1646.1
50°	1284.8	1286.7	1286.1	1291.4	1298.0	1313.6	1329.8	1354.0	1378.1	1410.0	1440.5
52.5°	1187.8	1190.5	1190.2	1193.6	1197.2	1207.0	1217.3	1234.4	1250.2	1270.5	1288.0
55°	1111.3	1115.0	1116.4	1119.4	1121.0	1126.3	1130.3	1138.5	1145.2	1156.7	1167.4
57.5°	1052.4	1057.4	1059.8	1060.8	1058.7	1058.4	1057.0	1058.8	1060.2	1066.4	1072.3
60°	1006.0	1010.1	1010.7	1010.1	1006.3	1003.6	999.2	997.8	997.1	1000.1	1003.4
62.5°	957.5	958.9	957.9	956.7	952.4	949.7	945.2	943.6	942.0	944.1	945.8
65°	890.3	891.6	890.3	889.6	885.7	883.6	879.8	878.5	876.3	876.9	876.5
67.5°	835.8	837.1	836.1	835.0	832.3	831.0	828.2	826.5	823.8	822.8	821.0
70°	781.5	782.4	780.9	779.9	776.8	775.6	773.0	772.4	770.4	769.9	767.9
72.5°	719.0	719.0	716.8	716.2	713.9	713.8	712.7	713.7	713.6	714.8	714.3
75°	654.9	654.0	651.3	650.8	649.2	649.9	648.8	650.3	650.5	652.9	653.1
77.5°	590.8	587.5	582.4	579.9	576.4	576.0	574.0	575.4	574.9	577.6	578.7
80°	510.0	505.9	499.3	496.1	492.0	491.3	489.5	491.3	490.4	493.6	495.9
82.5°	407.1	403.6	396.7	394.2	389.4	389.9	387.9	389.9	389.6	394.4	397.1
85°	301.2	298.8	291.7	285.5	278.5	274.4	270.4	269.7	268.5	270.4	272.0
87.5°	173.9	171.8	166.2	162.6	150.4	150.9	146.1	145.8	144.6	143.6	146.1
90°	26.2	29.3	28.4	31.1	30.7	33.9	33.7	36.8	36.1	38.9	38.8
92.5°	16.3	17.2	18.2	19.0	19.9	20.9	21.7	22.6	24.6	26.4	28.5
95°	21.9	23.0	24.0	25.1	26.1	27.2	28.2	29.3	32.1	34.9	37.8
97.5°	30.5	31.0	31.8	32.4	33.2	33.8	34.6	35.2	38.4	41.5	44.5
100°	38.6	39.1	39.7	40.2	40.8	41.4	41.9	42.5	48.5	54.5	60.4
102.5°	59.5	61.9	64.2	66.6	69.0	71.4	73.8	76.1	89.8	103.3	116.9
105°	108.8	115.2	121.9	128.3	134.8	141.2	147.9	154.3	176.1	197.8	219.6
107.5°	197.6	207.9	218.1	228.3	238.6	248.9	259.1	269.4	290.7	312.0	333.2
110°	299.8	309.6	319.4	329.2	338.9	348.7	358.6	368.5	381.3	394.1	406.9



TEST NUMBER: P1444810
 CATALOG NUMBER: EHBR1-30-UNV-TA-L940-UPL12

CANDELA DISTRIBUTION (continued):

	275°	277.5°	280°	282.5°	285°	287.5°	290°	292.5°	295°	297.5°	300°
112.5°	373.1	377.8	382.6	387.5	392.3	397.2	402.0	406.9	413.5	419.8	426.4
115°	395.8	396.0	396.5	396.7	397.2	397.5	398.2	398.7	400.9	403.0	405.4
117.5°	377.8	375.3	372.8	370.2	367.7	365.5	363.1	360.8	360.6	360.5	360.4
120°	341.2	337.7	334.4	330.8	327.7	324.4	321.2	318.2	316.8	315.4	314.1
122.5°	297.1	293.7	290.5	287.1	284.0	280.9	277.9	274.9	274.0	273.3	272.5
125°	256.1	253.4	250.7	247.9	245.5	243.1	240.7	238.4	238.8	239.1	239.6
127.5°	223.7	222.1	220.6	219.1	217.8	216.5	215.4	214.2	215.5	216.7	218.0
130°	202.2	201.6	201.2	200.8	200.6	200.3	200.2	200.0	201.9	203.7	205.6
132.5°	190.7	190.8	191.0	191.3	191.7	192.2	192.9	193.2	195.4	197.3	199.5
135°	185.4	185.9	186.6	187.2	188.1	188.8	189.7	190.5	192.7	194.5	196.6
137.5°	184.8	185.4	186.1	186.9	187.9	188.8	190.0	190.9	192.5	194.2	195.8
140°	186.5	187.0	187.7	188.5	189.2	190.0	191.0	191.8	193.4	194.6	195.9
142.5°	188.8	188.9	189.7	190.3	191.2	191.8	192.8	193.3	194.5	195.5	196.9
145°	192.3	192.7	193.3	193.7	194.2	194.9	195.6	196.2	197.0	197.8	198.5
147.5°	194.6	194.9	195.4	195.8	196.4	196.9	197.3	197.7	198.4	199.0	199.6
150°	196.0	196.3	196.6	196.7	197.1	197.6	198.1	198.3	198.9	199.4	199.9
152.5°	195.7	195.9	196.2	196.4	196.8	197.1	197.4	197.8	198.3	198.6	199.1
155°	195.9	196.3	196.7	196.9	197.4	197.6	198.1	198.3	198.7	199.1	199.6
157.5°	197.1	197.3	197.8	198.0	198.4	198.6	199.0	199.3	199.7	200.0	200.4
160°	197.9	198.3	198.6	199.1	199.5	199.7	200.2	200.7	201.0	201.3	201.7
162.5°	199.9	200.3	200.7	201.0	201.2	201.6	201.9	202.3	202.8	203.1	203.6
165°	201.7	202.0	202.5	202.8	203.3	203.7	204.0	204.5	204.8	205.1	205.4
167.5°	204.5	204.8	205.3	205.6	206.0	206.4	206.7	207.1	207.5	207.7	208.0
170°	206.5	206.8	207.2	207.6	207.9	208.1	208.5	208.8	209.2	209.5	209.9
172.5°	209.5	209.7	210.0	210.2	210.5	210.7	211.0	211.2	211.6	211.9	212.0
175°	211.9	211.9	212.0	212.1	212.2	212.2	212.3	212.5	212.6	212.7	212.8
177.5°	213.4	213.4	213.5	213.6	213.7	213.7	213.8	213.9	213.9	213.9	213.9
180°	212.9	212.9	212.9	212.9	212.9	212.9	212.9	212.9	212.9	212.9	212.9



TEST NUMBER: P1444810
 CATALOG NUMBER: EHBR1-30-UNV-TA-L940-UPL12

CANDELA DISTRIBUTION (continued):

	302.5°	305°	307.5°	310°	312.5°	315°	317.5°	320°	322.5°	325°	327.5°
0°	24483.0	24483.0	24483.0	24483.0	24483.0	24483.0	24483.0	24483.0	24483.0	24483.0	24483.0
2.5°	24742.2	24743.2	24723.3	24722.1	24703.5	24701.1	24682.9	24677.3	24662.6	24657.2	24642.1
5°	25492.8	25468.5	25412.3	25379.3	25323.8	25287.0	25226.9	25187.8	25129.7	25086.0	25027.7
7.5°	26252.0	26214.3	26151.2	26100.1	26023.1	25961.6	25871.4	25797.6	25700.0	25615.5	25512.9
10°	26474.7	26468.9	26452.8	26429.4	26393.5	26353.3	26292.0	26228.0	26142.4	26049.5	25935.5
12.5°	25926.9	25986.0	26066.6	26114.5	26172.6	26198.2	26222.0	26215.9	26200.3	26153.2	26087.4
15°	24539.0	24705.2	24925.3	25095.9	25292.2	25434.9	25592.4	25690.5	25788.4	25833.6	25861.3
17.5°	22331.3	22646.1	23040.7	23367.8	23745.2	24048.4	24380.7	24630.8	24888.1	25072.4	25239.0
20°	19495.4	19951.5	20509.7	21002.9	21576.4	22074.7	22620.7	23069.0	23531.3	23892.9	24235.0
22.5°	16419.6	16961.2	17636.1	18261.3	19000.5	19664.9	20414.5	21066.8	21748.1	22317.1	22867.3
25°	13394.9	13988.9	14726.9	15424.4	16261.6	17034.4	17923.4	18736.4	19616.9	20381.2	21136.3
27.5°	10633.0	11216.2	11969.6	12712.0	13597.4	14420.8	15373.3	16269.1	17271.6	18196.1	19141.7
30°	8362.9	8857.5	9533.1	10252.3	11125.4	11963.4	12926.2	13847.5	14890.4	15899.7	16964.9
32.5°	6625.7	7002.5	7533.7	8141.7	8947.4	9745.0	10661.8	11551.3	12578.2	13597.8	14705.7
35°	5262.0	5555.9	5960.9	6435.4	7117.7	7805.3	8616.2	9425.0	10383.1	11350.6	12427.4
37.5°	4149.4	4387.9	4705.0	5061.4	5608.7	6173.0	6837.9	7508.5	8341.0	9198.6	10174.5
40°	3240.2	3433.3	3680.2	3946.1	4359.3	4794.1	5308.3	5828.3	6497.1	7198.1	8005.7
42.5°	2545.4	2687.9	2862.3	3056.5	3442.2	3672.9	4021.6	4397.7	4889.5	5398.3	6005.5
45°	2044.2	2141.4	2262.3	2392.7	2571.6	2767.4	3006.2	3256.7	3723.8	3952.9	4322.2
47.5°	1707.1	1772.4	1849.3	1931.4	2036.9	2150.8	2292.5	2437.3	2624.5	2818.7	3046.2
50°	1480.1	1546.4	1572.8	1615.4	1676.5	1741.5	1821.4	1901.2	2001.6	2103.5	2220.6
52.5°	1311.6	1333.2	1362.0	1389.0	1426.8	1500.9	1524.8	1566.6	1622.9	1678.0	1739.5
55°	1182.9	1197.0	1215.7	1232.0	1254.9	1276.7	1308.3	1336.1	1373.7	1406.9	1447.7
57.5°	1082.8	1091.7	1104.7	1115.5	1130.2	1142.6	1161.1	1176.1	1197.7	1216.5	1241.3
60°	1010.0	1016.0	1024.7	1031.7	1041.1	1047.5	1056.8	1063.8	1075.2	1084.7	1098.6
62.5°	950.6	953.6	959.3	963.4	969.5	972.7	977.6	980.7	987.0	991.7	999.5
65°	879.3	879.9	883.8	885.5	890.2	892.0	896.0	897.4	902.6	906.1	912.9
67.5°	820.8	819.2	819.3	817.9	818.5	817.1	817.5	816.1	818.2	819.3	824.4
70°	767.5	765.2	764.4	762.0	761.2	758.7	758.0	755.8	755.5	754.7	756.6
72.5°	715.5	714.9	715.0	713.3	713.1	711.4	711.5	710.4	711.6	712.1	714.5
75°	655.7	655.9	657.0	655.5	656.0	654.5	655.0	653.6	654.4	654.1	656.4
77.5°	582.9	584.6	587.8	587.1	588.1	586.6	587.2	585.4	585.9	584.6	585.5
80°	501.0	504.7	509.0	508.8	510.5	509.4	511.0	509.2	510.0	507.7	507.2
82.5°	403.9	406.9	411.5	411.7	415.7	416.4	420.8	420.6	423.4	421.7	420.4
85°	276.1	278.2	282.2	284.3	288.4	291.0	295.2	297.0	293.9	299.5	295.1
87.5°	144.2	149.5	146.5	153.5	151.9	158.9	157.4	164.0	162.7	168.3	167.6
90°	42.7	42.9	47.0	47.3	52.4	53.4	56.6	55.3	58.3	57.2	60.3
92.5°	30.3	32.4	34.4	36.3	38.3	40.3	38.5	36.6	34.8	33.1	31.2
95°	40.6	43.5	46.3	49.2	52.0	54.9	51.8	48.8	45.7	42.7	39.7
97.5°	47.6	50.6	53.7	56.7	59.9	63.0	59.3	55.7	52.1	48.5	45.0
100°	66.3	72.3	78.3	84.1	90.1	96.0	89.3	82.5	75.9	69.1	62.4
102.5°	130.6	144.2	157.8	171.5	185.0	198.7	184.5	170.3	156.1	141.8	127.4
105°	241.4	263.2	285.0	306.7	328.5	350.5	327.4	304.3	281.1	258.1	234.9
107.5°	354.5	375.7	397.2	418.3	439.6	461.1	437.7	414.2	390.9	367.3	344.0
110°	419.9	432.7	445.6	458.5	471.3	484.4	467.3	450.4	433.3	416.3	399.1



TEST NUMBER: P1444810
 CATALOG NUMBER: EHBR1-30-UNV-TA-L940-UPL12

CANDELA DISTRIBUTION (continued):

	302.5°	305°	307.5°	310°	312.5°	315°	317.5°	320°	322.5°	325°	327.5°
112.5°	432.9	439.6	446.1	452.9	459.4	466.0	453.9	441.9	429.7	417.6	405.5
115°	407.7	409.9	412.3	414.6	416.8	419.1	411.1	403.0	395.0	387.0	378.7
117.5°	360.3	360.5	360.3	360.5	360.3	360.3	355.8	351.5	347.0	342.7	338.2
120°	312.7	311.4	310.1	308.7	307.3	306.0	304.4	302.7	300.9	299.2	297.4
122.5°	271.7	271.1	270.2	269.4	268.6	267.8	267.4	267.0	266.5	266.0	265.4
125°	240.0	240.5	240.8	241.2	241.6	241.9	241.9	241.9	241.8	241.8	241.6
127.5°	219.2	220.5	221.6	222.8	224.0	225.2	225.4	225.6	225.9	226.2	226.4
130°	207.4	209.2	211.0	212.7	214.4	216.2	216.2	216.5	216.6	216.8	217.0
132.5°	201.4	203.4	205.3	207.5	209.2	211.1	211.2	211.5	211.4	211.7	211.7
135°	198.4	200.4	202.2	204.1	205.8	207.7	207.7	207.8	207.7	207.9	207.9
137.5°	197.3	198.9	200.4	202.0	203.4	205.0	204.8	205.0	204.9	205.1	205.1
140°	197.2	198.5	199.7	201.1	202.2	203.5	203.4	203.3	203.2	203.1	202.8
142.5°	197.8	198.8	199.7	200.9	201.7	202.8	202.4	202.1	201.7	201.4	201.0
145°	199.3	200.2	200.9	201.6	202.2	203.0	202.4	202.0	201.4	201.0	200.5
147.5°	200.1	200.8	201.1	201.6	201.9	202.5	202.0	201.5	201.0	200.5	199.9
150°	200.2	200.9	201.2	201.6	202.0	202.5	201.9	201.3	200.7	200.1	199.6
152.5°	199.6	200.0	200.4	200.7	201.0	201.4	200.8	200.4	199.7	199.0	198.4
155°	199.7	200.2	200.4	200.8	200.9	201.1	200.5	200.2	199.7	199.1	198.5
157.5°	200.7	201.0	201.3	201.5	201.7	202.0	201.5	201.1	200.7	200.4	199.8
160°	202.0	202.3	202.5	202.7	203.0	203.0	202.6	202.5	202.2	201.8	201.3
162.5°	203.8	204.3	204.6	204.8	205.1	205.3	205.0	204.7	204.2	203.8	203.4
165°	205.7	206.0	206.3	206.5	206.6	206.8	206.5	206.4	206.1	205.9	205.5
167.5°	208.2	208.6	208.8	209.1	209.2	209.3	209.1	209.0	208.6	208.3	208.0
170°	210.1	210.4	210.7	210.9	211.1	211.3	211.2	211.0	210.7	210.6	210.3
172.5°	212.2	212.5	212.6	212.8	212.9	213.2	213.0	212.7	212.5	212.2	211.9
175°	212.8	212.9	213.1	213.1	213.1	213.2	213.0	212.8	212.5	212.3	212.1
177.5°	213.9	213.9	213.9	213.8	213.8	213.8	213.7	213.5	213.4	213.3	213.1
180°	212.9	212.9	212.9	212.9	212.9	212.9	212.9	212.9	212.9	212.9	212.9



TEST NUMBER: P1444810
 CATALOG NUMBER: EHBR1-30-UNV-TA-L940-UPL12

CANDELA DISTRIBUTION (continued):

	330°	332.5°	335°	337.5°	340°	342.5°	345°	347.5°	350°	352.5°	355°
0°	24483.0	24483.0	24483.0	24483.0	24483.0	24483.0	24483.0	24483.0	24483.0	24483.0	24483.0
2.5°	24636.8	24626.1	24619.2	24610.4	24605.0	24598.2	24593.2	24589.0	24585.6	24582.4	24580.0
5°	24983.2	24928.1	24885.5	24839.2	24801.2	24763.2	24734.0	24709.8	24693.1	24680.5	24673.1
7.5°	25424.3	25323.5	25233.8	25139.5	25054.9	24971.7	24900.0	24838.2	24791.8	24761.8	24743.6
10°	25818.2	25683.2	25549.8	25409.3	25276.1	25146.9	25027.7	24922.8	24839.8	24784.7	24752.4
12.5°	25994.8	25879.8	25743.5	25591.0	25427.8	25262.6	25101.6	24956.5	24834.6	24752.9	24705.7
15°	25839.3	25792.0	25699.6	25581.2	25426.3	25255.5	25066.6	24888.9	24725.4	24619.5	24558.1
17.5°	25333.4	25399.3	25392.2	25346.9	25235.6	25091.8	24899.3	24699.7	24495.3	24353.6	24276.3
20°	24479.7	24686.8	24791.8	24845.8	24802.1	24708.8	24534.4	24332.0	24093.7	23908.7	23795.8
22.5°	23280.1	23645.7	23873.5	24040.2	24075.6	24043.8	23889.8	23697.2	23431.6	23209.3	23042.7
25°	21735.8	22271.4	22631.4	22913.7	23023.3	23051.6	22920.6	22729.1	22433.0	22174.0	21945.1
27.5°	19916.7	20612.8	21093.5	21472.8	21643.9	21718.1	21597.6	21402.1	21051.8	20742.7	20443.7
30°	17869.0	18694.6	19273.4	19728.2	19936.9	20034.9	19906.8	19688.7	19281.2	18909.1	18532.4
32.5°	15677.1	16580.6	17211.3	17705.3	17912.0	18004.3	17836.7	17591.7	17120.6	16682.3	16243.0
35°	13382.3	14294.2	14930.3	15411.0	15584.4	15640.0	15425.6	15142.4	14620.5	14139.5	13660.4
37.5°	11040.7	11889.2	12467.3	12898.7	13006.0	13015.6	12757.3	12444.5	11896.0	11421.7	10944.8
40°	8719.4	9435.0	9901.7	10247.0	10284.2	10251.0	9970.3	9655.5	9142.3	8717.4	8298.7
42.5°	6532.8	7073.0	7405.9	7642.6	7628.5	7562.9	7305.5	7034.9	6611.5	6287.9	5958.4
45°	4659.5	5015.7	5210.4	5348.9	5304.4	5241.9	5041.5	4851.9	4564.1	4355.1	4133.7
47.5°	3237.0	3662.3	3588.3	3859.1	3625.8	3779.9	3459.0	3282.1	3129.4	3018.3	2893.2
50°	2317.4	2414.9	2462.0	2494.1	2477.1	2453.3	2395.7	2344.2	2274.4	2223.6	2164.3
52.5°	1789.7	1838.4	1865.1	1884.4	1880.6	1872.0	1846.9	1823.9	1791.3	1769.8	1743.8
55°	1516.0	1516.6	1565.7	1544.7	1575.8	1539.4	1553.7	1513.3	1519.9	1485.1	1461.8
57.5°	1259.7	1279.7	1288.7	1297.3	1294.9	1293.4	1283.6	1278.8	1267.8	1264.4	1256.6
60°	1108.1	1118.5	1120.7	1124.7	1121.3	1120.0	1112.5	1109.7	1102.3	1101.0	1095.8
62.5°	1004.1	1009.4	1009.4	1009.4	1005.1	1001.0	992.5	988.0	981.8	980.4	977.4
65°	917.4	922.9	923.8	924.9	921.8	918.5	911.1	906.3	899.9	897.4	893.9
67.5°	827.8	833.7	835.7	838.7	836.9	836.2	831.1	829.3	825.0	823.9	820.8
70°	757.4	759.9	759.8	759.7	755.7	752.1	746.2	743.5	739.0	738.0	735.2
72.5°	715.6	717.4	716.2	714.8	709.5	704.3	697.4	692.3	686.5	682.9	678.8
75°	656.7	659.0	657.6	656.5	652.0	648.5	642.9	640.1	636.0	634.9	632.0
77.5°	584.4	585.5	583.2	582.9	579.4	577.2	573.0	572.3	569.3	569.3	566.6
80°	503.9	503.3	499.5	498.8	495.3	494.3	491.1	491.3	488.9	489.9	488.0
82.5°	414.7	412.4	407.4	405.9	401.9	401.5	399.3	401.2	399.7	401.9	400.6
85°	297.2	297.8	295.6	295.6	294.4	294.8	294.6	296.0	296.2	298.1	298.0
87.5°	165.6	168.1	167.6	169.7	169.7	172.2	172.9	176.5	177.0	180.4	180.4
90°	59.2	62.4	61.2	64.7	64.4	68.2	68.5	72.2	72.0	75.3	74.3
92.5°	29.3	27.6	25.8	23.9	23.0	22.0	21.4	20.1	19.5	18.4	17.4
95°	36.6	33.5	30.5	27.4	26.4	25.2	24.2	23.2	22.1	21.1	20.0
97.5°	41.4	37.7	34.1	30.5	29.5	28.7	27.7	26.7	25.9	25.0	24.0
100°	55.6	48.9	42.2	35.4	34.7	33.9	33.1	32.3	31.6	30.7	29.9
102.5°	113.2	98.9	84.6	70.2	67.5	64.8	62.1	59.3	56.6	53.8	51.1
105°	211.8	188.5	165.4	142.2	134.8	127.4	120.1	112.6	105.2	97.8	90.5
107.5°	320.5	296.9	273.4	249.9	236.4	222.7	209.1	195.4	181.8	168.1	154.5
110°	382.1	364.9	347.8	330.5	319.7	308.7	297.8	286.8	276.0	264.9	253.9



TEST NUMBER: P1444810
 CATALOG NUMBER: EHBR1-30-UNV-TA-L940-UPL12

CANDELA DISTRIBUTION (continued):

	330°	332.5°	335°	337.5°	340°	342.5°	345°	347.5°	350°	352.5°	355°
112.5°	393.2	381.0	368.8	356.4	351.6	346.7	341.8	336.8	331.9	326.8	321.9
115°	370.6	362.5	354.2	345.9	344.3	342.6	341.0	339.2	337.5	335.8	334.0
117.5°	333.8	329.2	324.8	320.2	320.6	321.0	321.4	321.7	322.0	322.2	322.5
120°	295.6	293.8	292.2	290.3	292.1	293.7	295.3	296.8	298.4	299.8	301.3
122.5°	265.0	264.4	263.9	263.3	265.4	267.4	269.3	271.3	273.1	274.7	276.5
125°	241.6	241.5	241.4	241.1	243.3	245.3	247.4	249.2	251.1	252.8	254.5
127.5°	226.7	226.9	227.1	227.2	229.0	230.4	232.0	233.3	234.8	235.9	237.1
130°	217.1	217.1	217.4	217.4	218.9	220.4	221.9	223.0	224.3	225.4	226.4
132.5°	211.9	211.9	212.0	212.0	213.3	214.4	215.5	216.3	217.4	218.0	218.7
135°	207.9	207.9	207.9	207.9	209.1	210.2	211.2	212.0	213.0	213.5	214.2
137.5°	205.1	205.0	205.1	205.0	206.1	207.0	208.0	208.7	209.4	210.1	210.6
140°	202.8	202.6	202.6	202.4	203.4	204.2	205.1	205.8	206.5	207.0	207.5
142.5°	200.8	200.3	200.2	199.7	200.4	201.0	201.7	202.3	202.8	203.2	203.5
145°	200.0	199.5	199.1	198.4	199.0	199.5	200.1	200.6	200.9	201.0	201.4
147.5°	199.6	198.9	198.3	197.7	198.3	198.6	199.0	199.2	199.7	199.7	199.9
150°	198.9	198.2	197.4	196.8	197.1	197.3	197.6	197.9	198.2	198.2	198.3
152.5°	197.8	197.0	196.4	195.6	195.8	195.9	196.1	196.2	196.4	196.4	196.5
155°	197.9	197.2	196.7	196.0	196.1	196.3	196.3	196.4	196.3	196.3	196.2
157.5°	199.4	198.7	198.3	197.7	197.7	197.7	197.7	197.4	197.4	197.2	196.9
160°	201.0	200.5	200.1	199.6	199.5	199.4	199.4	199.1	199.0	198.7	198.4
162.5°	202.9	202.4	201.8	201.2	201.1	201.1	201.0	200.8	200.7	200.4	200.1
165°	205.2	204.9	204.5	203.9	203.8	203.7	203.6	203.3	203.1	202.7	202.4
167.5°	207.7	207.3	206.9	206.5	206.5	206.4	206.3	206.1	205.9	205.6	205.5
170°	210.0	209.6	209.3	209.0	208.8	208.7	208.5	208.3	208.0	207.9	207.6
172.5°	211.6	211.3	210.9	210.5	210.5	210.4	210.2	210.1	209.9	209.7	209.6
175°	211.9	211.6	211.2	211.0	210.9	210.8	210.7	210.6	210.5	210.4	210.2
177.5°	212.9	212.8	212.4	212.3	212.2	212.2	212.1	212.0	212.0	211.9	211.9
180°	212.9	212.9	212.9	212.9	212.9	212.9	212.9	212.9	212.9	212.9	212.9



TEST NUMBER: P1444810
 CATALOG NUMBER: EHBR1-30-UNV-TA-L940-UPL12

CANDELA DISTRIBUTION (continued):

	357.5°	360°
0°	24483.0	24483.0
2.5°	24577.8	24576.5
5°	24669.2	24667.7
7.5°	24738.7	24738.3
10°	24746.8	24751.1
12.5°	24697.6	24701.0
15°	24553.3	24560.0
17.5°	24277.7	24286.5
20°	23802.7	23811.9
22.5°	23033.6	23037.5
25°	21915.5	21899.6
27.5°	20391.1	20363.8
30°	18453.3	18426.8
32.5°	16142.8	16126.3
35°	13542.0	13531.6
37.5°	10803.8	10782.7
40°	8145.7	8083.8
42.5°	5814.1	5705.6
45°	4018.1	3889.3
47.5°	2805.0	2725.4
50°	2126.1	2100.5
52.5°	1732.4	1726.4
55°	1461.8	1459.1
57.5°	1258.4	1257.4
60°	1098.6	1098.3
62.5°	979.4	979.9
65°	895.5	895.7
67.5°	821.6	821.1
70°	736.3	735.6
72.5°	677.4	676.5
75°	632.0	631.5
77.5°	567.5	566.4
80°	489.2	488.0
82.5°	402.4	401.0
85°	300.2	300.3
87.5°	183.6	183.5
90°	77.4	76.0
92.5°	16.8	16.0
95°	19.0	18.0
97.5°	23.2	22.3
100°	29.2	28.4
102.5°	48.4	45.7
105°	83.1	75.7
107.5°	140.8	127.2
110°	242.9	231.9



TEST NUMBER: P1444810
CATALOG NUMBER: EHBR1-30-UNV-TA-L940-UPL12

CANDELA DISTRIBUTION (continued):

	357.5°	360°
112.5°	316.9	311.8
115°	331.9	330.2
117.5°	322.6	322.7
120°	302.5	303.9
122.5°	278.0	279.6
125°	256.0	257.6
127.5°	238.0	239.0
130°	227.0	227.9
132.5°	219.1	219.5
135°	214.5	214.8
137.5°	210.8	211.1
140°	207.7	207.9
142.5°	203.7	203.8
145°	201.5	201.5
147.5°	199.7	199.7
150°	198.2	198.2
152.5°	196.2	196.2
155°	196.0	195.8
157.5°	196.6	196.4
160°	198.1	197.9
162.5°	199.7	199.6
165°	202.0	201.6
167.5°	205.1	205.0
170°	207.3	207.1
172.5°	209.3	209.2
175°	210.1	210.0
177.5°	211.9	211.7
180°	212.9	212.9

LM-79-2019: Approved Method: Electrical and Photometric Measurements of Solid-
State Lighting Products

Report Prepared for

Cooper Lighting Solutions

Metalux

Report Number: SP1-2506-472-7

Test Date: 08/04/2025

Luminaire Tested: EHBR-60-L940-N

Data in this report applies to families of products including EHBR-60-L940-N

Test Information

Test Method: LM-79-2019
 Report Number: SP1-2506-472-7
 Test Lab: COOPER LIGHTING SOLUTIONS
 Photometer: SP1 - 76IN SPHERE
 Measurement Geometry: 4π
 Issue Date: 08/05/2025
 Manufacturer: COOPER LIGHTING SOLUTIONS
 Product Line: Metalux
 Catalog Number: **EHBR-60-L940-N**
 Description: Elevate Round Highbay at, 60000 lumens, 4000K 90CRI LEDs with N lens

Spectral Parameters

CCT (K): 3963
 CIE u': 0.2267
 CIE v': 0.5003
 Duv: -0.0016
 CIE x: 0.3810
 CIE y: 0.3738
 CIE z: 0.2453
 Peak Wavelength (nm): 630
 Dominant Wavelength (nm): 580
 Purity: 26.49712
 Rf: 90.7
 Rg: 101

CRI (Ra):	93.4		
R1:	95.2	R9:	66.4
R2:	95.1	R10:	86.6
R3:	93.3	R11:	94.4
R4:	94.5	R12:	75.4
R5:	94.2	R13:	95.0
R6:	92.9	R14:	95.4
R7:	94.0	R15:	92.8
R8:	87.7		



Test Conditions

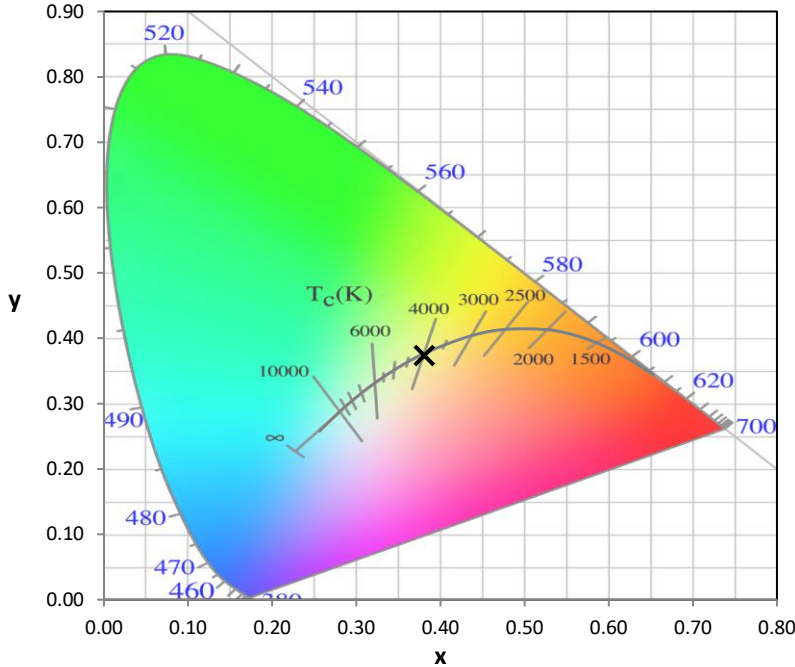
Stabilization Time: 44M
 Operation Time: 1H 44M
 Sphere Temperature (°C): 25.0

REPORT NUMBER: SP1-2506-472-7

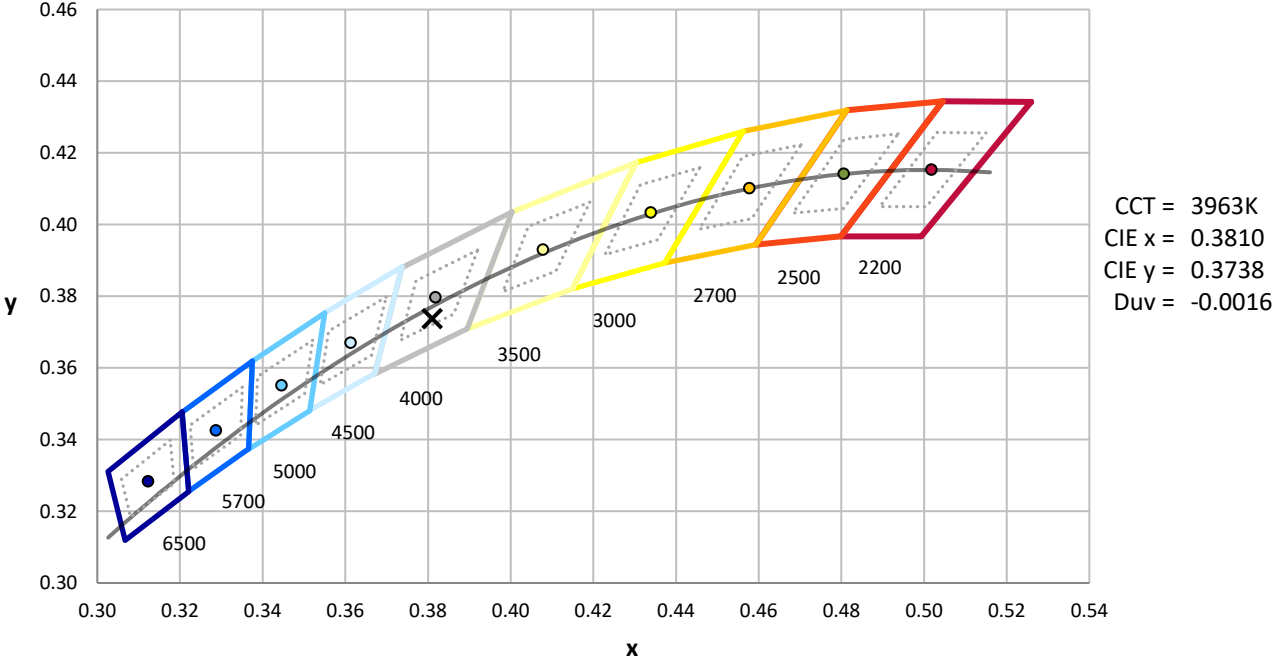
Measurement and Test Equipment			
Instrument	Identification Number	Calibration Date	Calibration Due Date
Photometer	76INCH SPHERE IN0058	6/16/2025	12/16/2025
Power Meter	XITRON INXT2011004	1/21/2025	1/21/2026
AC Power Source	CHROMA 61603 IN0063	10/22/2024	10/22/2025
DC Power Source	AGILENT E3634A IN0208	10/22/2024	10/22/2025
Sphere Thermometer	ONSET IN0085	10/22/2024	10/22/2025
Room Thermometer	ONSET IN0046	10/22/2024	10/22/2025

REPORT NUMBER: SP1-2506-472-7

CIE 1931 Chromaticity Diagram



CIE 1931 Chromaticity Diagram with 2017 ANSI 7-Step and 4-Step Quadrangles



Point lies inside the ANSI 4000K 4-step quadrangle

REPORT NUMBER: SP1-2506-472-7

Photopic Flux vs. Wavelength



Photopic Lumens: NR

λ (nm)	Power $\text{W}^{\wedge}/\text{nm}$	Lumens (ϕ/nm)	λ (nm)	Power $\text{W}^{\wedge}/\text{nm}$	Lumens (ϕ/nm)	λ (nm)	Power $\text{W}^{\wedge}/\text{nm}$	Lumens (ϕ/nm)	λ (nm)	Power $\text{W}^{\wedge}/\text{nm}$	Lumens (ϕ/nm)	λ (nm)	Power $\text{W}^{\wedge}/\text{nm}$	Lumens (ϕ/nm)
360	0	NR	490	141	NR	620	276	NR	750	5	NR	880	0	NR
365	0	NR	495	167	NR	625	279	NR	755	4	NR	885	0	NR
370	0	NR	500	193	NR	630	1000	NR	760	4	NR	890	0	NR
375	0	NR	505	215	NR	635	628	NR	765	3	NR	895	0	NR
380	0	NR	510	230	NR	640	164	NR	770	3	NR	900	0	NR
385	0	NR	515	243	NR	645	161	NR	775	2	NR	905	0	NR
390	1	NR	520	251	NR	650	137	NR	780	2	NR	910	0	NR
395	2	NR	525	256	NR	655	111	NR	785	2	NR	915	0	NR
400	3	NR	530	262	NR	660	92	NR	790	1	NR	920	0	NR
405	4	NR	535	267	NR	665	76	NR	795	1	NR	925	0	NR
410	6	NR	540	271	NR	670	71	NR	800	1	NR	930	0	NR
415	11	NR	545	276	NR	675	56	NR	805	1	NR	935	0	NR
420	20	NR	550	280	NR	680	47	NR	810	1	NR	940	0	NR
425	37	NR	555	285	NR	685	40	NR	815	1	NR	945	0	NR
430	63	NR	560	290	NR	690	34	NR	820	1	NR	950	0	NR
435	108	NR	565	294	NR	695	29	NR	825	1	NR	955	0	NR
440	186	NR	570	296	NR	700	25	NR	830	0	NR	960	0	NR
445	323	NR	575	298	NR	705	21	NR	835	0	NR	965	0	NR
450	403	NR	580	299	NR	710	18	NR	840	0	NR	970	0	NR
455	293	NR	585	298	NR	715	15	NR	845	0	NR	975	0	NR
460	214	NR	590	296	NR	720	13	NR	850	0	NR	980	0	NR
465	180	NR	595	288	NR	725	11	NR	855	0	NR	985	0	NR
470	132	NR	600	286	NR	730	9	NR	860	0	NR	990	0	NR
475	109	NR	605	282	NR	735	8	NR	865	0	NR	995	0	NR
480	110	NR	610	311	NR	740	7	NR	870	0	NR	1000	0	NR
485	121	NR	615	334	NR	745	6	NR	875	0	NR			

REPORT NUMBER: SP1-2506-472-7

Scotopic Flux vs. Wavelength



Scotopic Lumens: NR

S/P: 1.76

λ (nm)	Power W [^] /nm	Lumens (φ/nm)	λ (nm)	Power W [^] /nm	Lumens (φ/nm)	λ (nm)	Power W [^] /nm	Lumens (φ/nm)	λ (nm)	Power W [^] /nm	Lumens (φ/nm)	λ (nm)	Power W [^] /nm	Lumens (φ/nm)
360	0	NR	490	141	NR	620	276	NR	750	5	NR	880	0	NR
365	0	NR	495	167	NR	625	279	NR	755	4	NR	885	0	NR
370	0	NR	500	193	NR	630	1000	NR	760	4	NR	890	0	NR
375	0	NR	505	215	NR	635	628	NR	765	3	NR	895	0	NR
380	0	NR	510	230	NR	640	164	NR	770	3	NR	900	0	NR
385	0	NR	515	243	NR	645	161	NR	775	2	NR	905	0	NR
390	1	NR	520	251	NR	650	137	NR	780	2	NR	910	0	NR
395	2	NR	525	256	NR	655	111	NR	785	2	NR	915	0	NR
400	3	NR	530	262	NR	660	92	NR	790	1	NR	920	0	NR
405	4	NR	535	267	NR	665	76	NR	795	1	NR	925	0	NR
410	6	NR	540	271	NR	670	71	NR	800	1	NR	930	0	NR
415	11	NR	545	276	NR	675	56	NR	805	1	NR	935	0	NR
420	20	NR	550	280	NR	680	47	NR	810	1	NR	940	0	NR
425	37	NR	555	285	NR	685	40	NR	815	1	NR	945	0	NR
430	63	NR	560	290	NR	690	34	NR	820	1	NR	950	0	NR
435	108	NR	565	294	NR	695	29	NR	825	1	NR	955	0	NR
440	186	NR	570	296	NR	700	25	NR	830	0	NR	960	0	NR
445	323	NR	575	298	NR	705	21	NR	835	0	NR	965	0	NR
450	403	NR	580	299	NR	710	18	NR	840	0	NR	970	0	NR
455	293	NR	585	298	NR	715	15	NR	845	0	NR	975	0	NR
460	214	NR	590	296	NR	720	13	NR	850	0	NR	980	0	NR
465	180	NR	595	288	NR	725	11	NR	855	0	NR	985	0	NR
470	132	NR	600	286	NR	730	9	NR	860	0	NR	990	0	NR
475	109	NR	605	282	NR	735	8	NR	865	0	NR	995	0	NR
480	110	NR	610	311	NR	740	7	NR	870	0	NR	1000	0	NR
485	121	NR	615	334	NR	745	6	NR	875	0	NR			

REPORT NUMBER: SP1-2506-472-7

Melanopic Flux vs. Wavelength



Melanopic Lumens: NR

M/P: 3.64

λ (nm)	Power W [^] /nm	Lumens (φ/nm)	λ (nm)	Power W [^] /nm	Lumens (φ/nm)	λ (nm)	Power W [^] /nm	Lumens (φ/nm)	λ (nm)	Power W [^] /nm	Lumens (φ/nm)	λ (nm)	Power W [^] /nm	Lumens (φ/nm)
360	0	NR	490	141	NR	620	276	NR	750	5	NR	880	0	NR
365	0	NR	495	167	NR	625	279	NR	755	4	NR	885	0	NR
370	0	NR	500	193	NR	630	1000	NR	760	4	NR	890	0	NR
375	0	NR	505	215	NR	635	628	NR	765	3	NR	895	0	NR
380	0	NR	510	230	NR	640	164	NR	770	3	NR	900	0	NR
385	0	NR	515	243	NR	645	161	NR	775	2	NR	905	0	NR
390	1	NR	520	251	NR	650	137	NR	780	2	NR	910	0	NR
395	2	NR	525	256	NR	655	111	NR	785	2	NR	915	0	NR
400	3	NR	530	262	NR	660	92	NR	790	1	NR	920	0	NR
405	4	NR	535	267	NR	665	76	NR	795	1	NR	925	0	NR
410	6	NR	540	271	NR	670	71	NR	800	1	NR	930	0	NR
415	11	NR	545	276	NR	675	56	NR	805	1	NR	935	0	NR
420	20	NR	550	280	NR	680	47	NR	810	1	NR	940	0	NR
425	37	NR	555	285	NR	685	40	NR	815	1	NR	945	0	NR
430	63	NR	560	290	NR	690	34	NR	820	1	NR	950	0	NR
435	108	NR	565	294	NR	695	29	NR	825	1	NR	955	0	NR
440	186	NR	570	296	NR	700	25	NR	830	0	NR	960	0	NR
445	323	NR	575	298	NR	705	21	NR	835	0	NR	965	0	NR
450	403	NR	580	299	NR	710	18	NR	840	0	NR	970	0	NR
455	293	NR	585	298	NR	715	15	NR	845	0	NR	975	0	NR
460	214	NR	590	296	NR	720	13	NR	850	0	NR	980	0	NR
465	180	NR	595	288	NR	725	11	NR	855	0	NR	985	0	NR
470	132	NR	600	286	NR	730	9	NR	860	0	NR	990	0	NR
475	109	NR	605	282	NR	735	8	NR	865	0	NR	995	0	NR
480	110	NR	610	311	NR	740	7	NR	870	0	NR	1000	0	NR
485	121	NR	615	334	NR	745	6	NR	875	0	NR			

Summary

$R_f = 90.7$
 $R_g = 101$
 $CIE R_a = 93.4$
 $R_9 = 66.4$



Color Vector Graphics

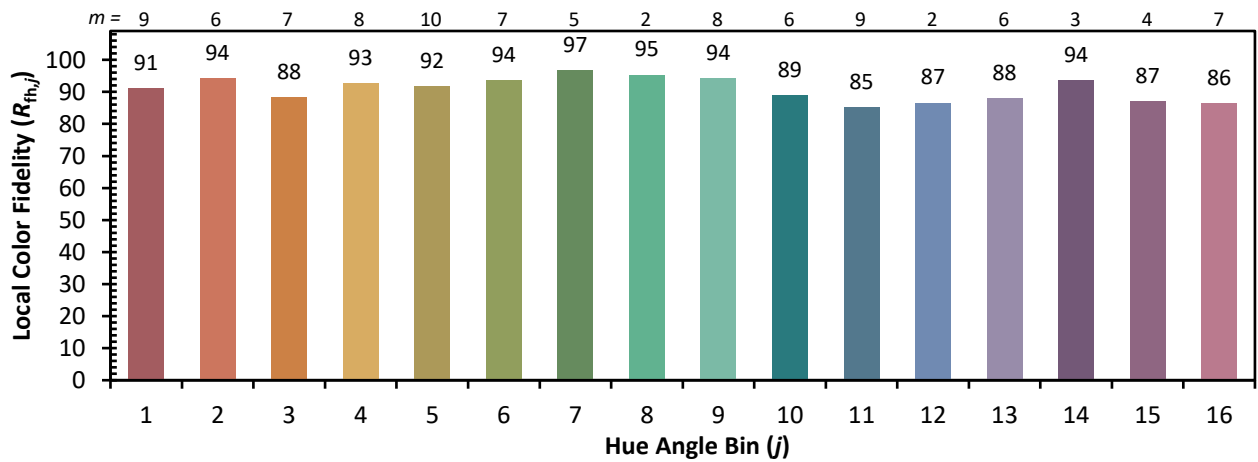
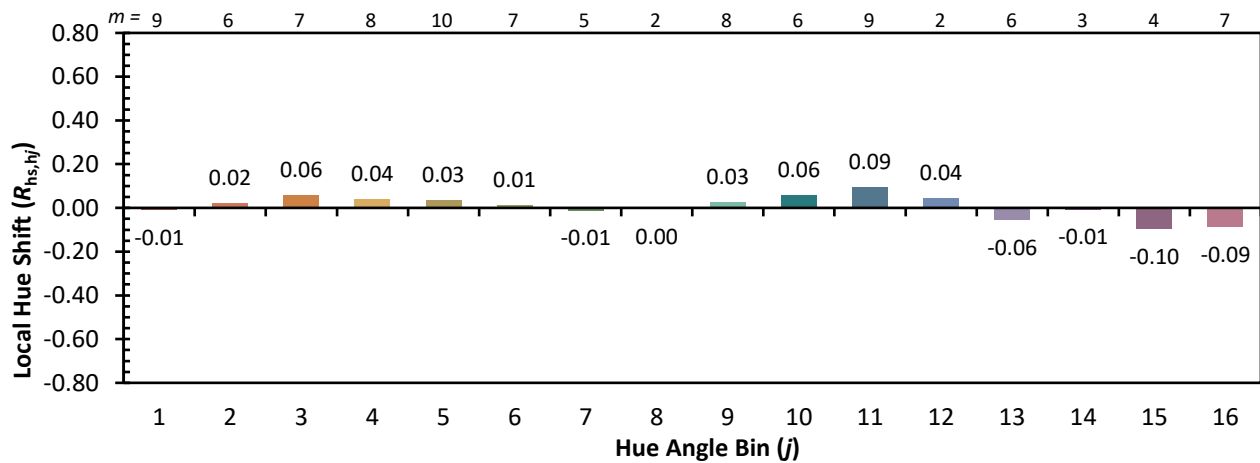
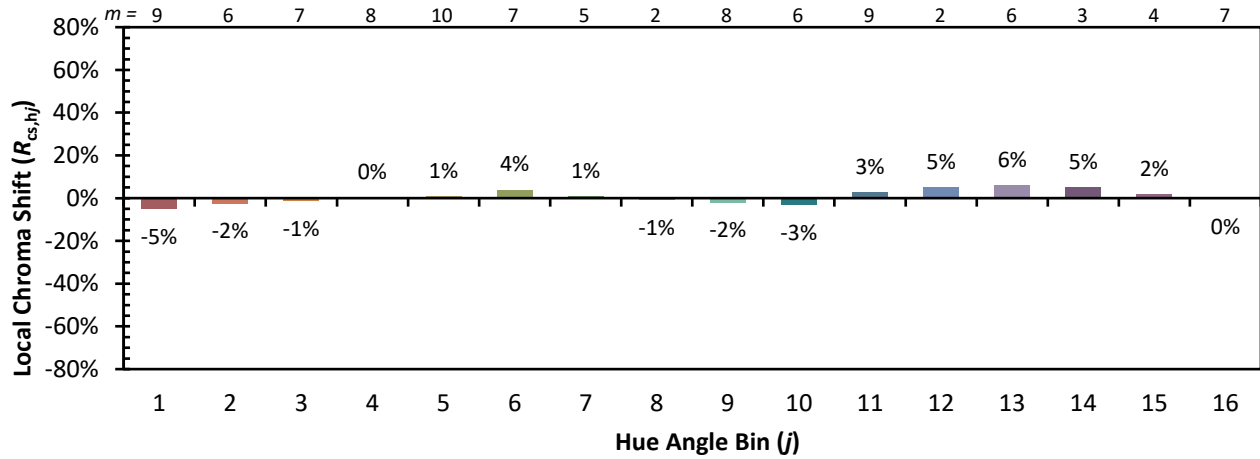


Individual Sample Fidelity Index ($R_{f,i}$)

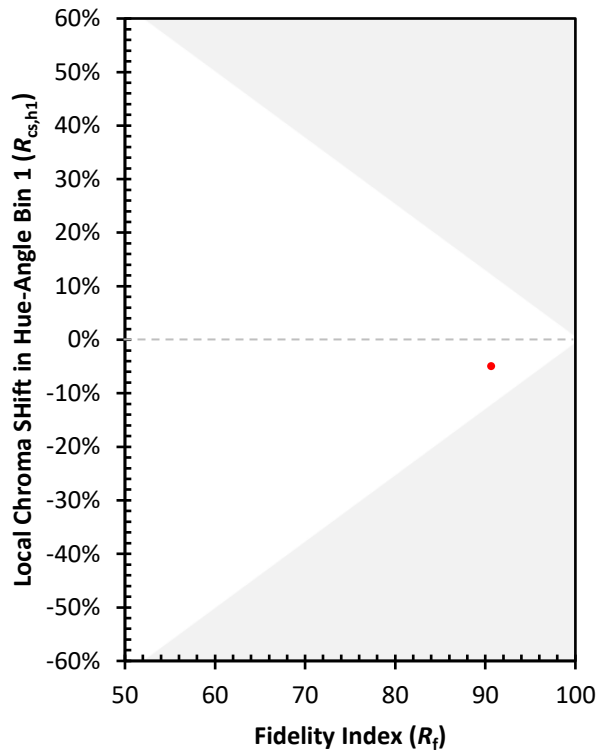
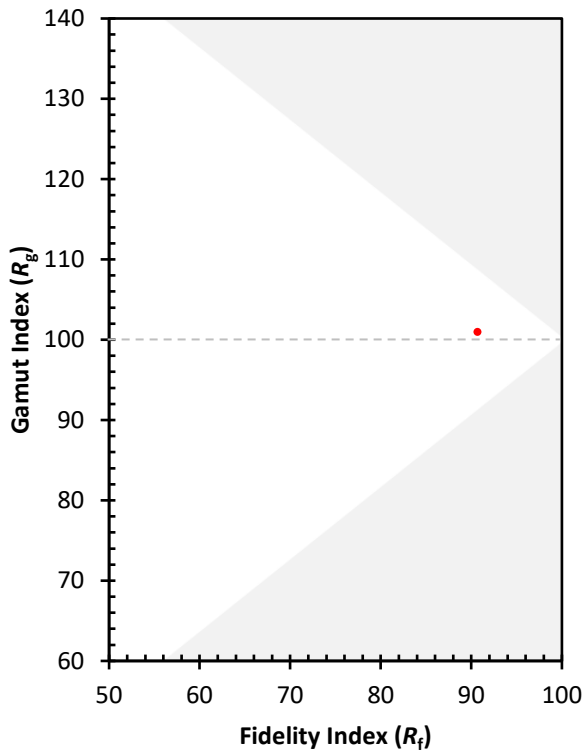
CES01 = 86	CES26 = 90	CES51 = 99	CES76 = 83
CES02 = 62	CES27 = 93	CES52 = 97	CES77 = 87
CES03 = 31	CES28 = 94	CES53 = 95	CES78 = 79
CES04 = 69	CES29 = 91	CES54 = 96	CES79 = 94
CES05 = 49	CES30 = 98	CES55 = 95	CES80 = 91
CES06 = 50	CES31 = 92	CES56 = 95	CES81 = 80
CES07 = 42	CES32 = 84	CES57 = 94	CES82 = 96
CES08 = 41	CES33 = 95	CES58 = 95	CES83 = 95
CES09 = 29	CES34 = 90	CES59 = 98	CES84 = 93
CES10 = 74	CES35 = 94	CES60 = 93	CES85 = 82
CES11 = 57	CES36 = 84	CES61 = 93	CES86 = 84
CES12 = 63	CES37 = 92	CES62 = 90	CES87 = 90
CES13 = 43	CES38 = 93	CES63 = 92	CES88 = 97
CES14 = 74	CES39 = 98	CES64 = 91	CES89 = 84
CES15 = 71	CES40 = 96	CES65 = 88	CES90 = 99
CES16 = 47	CES41 = 98	CES66 = 88	CES91 = 74
CES17 = 49	CES42 = 89	CES67 = 87	CES92 = 78
CES18 = 56	CES43 = 89	CES68 = 87	CES93 = 87
CES19 = 71	CES44 = 99	CES69 = 88	CES94 = 75
CES20 = 66	CES45 = 93	CES70 = 84	CES95 = 83
CES21 = 85	CES46 = 95	CES71 = 80	CES96 = 91
CES22 = 78	CES47 = 92	CES72 = 93	CES97 = 93
CES23 = 91	CES48 = 96	CES73 = 78	CES98 = 93
CES24 = 90	CES49 = 93	CES74 = 92	CES99 = 94
CES25 = 71	CES50 = 99	CES75 = 81	



Color Rendition by Hue-Angle Bin



Measure Comparisons



(END OF REPORT)