

Cooper Lighting Solutions Photometric Lab
1121 Highway 74 South
Peachtree City, GA 30269



Scaled data based on original data using
LM-79-2019 Approved Method: Electrical and Photometric Measurements of Solid-
State Lighting Products

Test Report Prepared for
Cooper Lighting Solutions

Brand: METALUX

Report Number: P1444842

Luminaire Tested: EHBR1-54-UNV-TA-L940-UPL12

Issue Date: 5/1/2026

Test Information

Test Method: LM-79-2019
Report Number: P1444842
REPORT IS A COMBINATION OF REPORTS P1444307 AND P1431635
Test Lab: INNOVATION CENTER
Issue Date: 5/1/2026
Manufacturer: COOPER LIGHTING SOLUTIONS
Product Line: METALUX
Catalog Number: EHBR1-54-UNV-TA-L940-UPL12
Description: Elevate Round Highbay at, 54000 lumens, 4000K 90CRI LEDs with TA lens
Light Source: -
Ballast/Driver: -

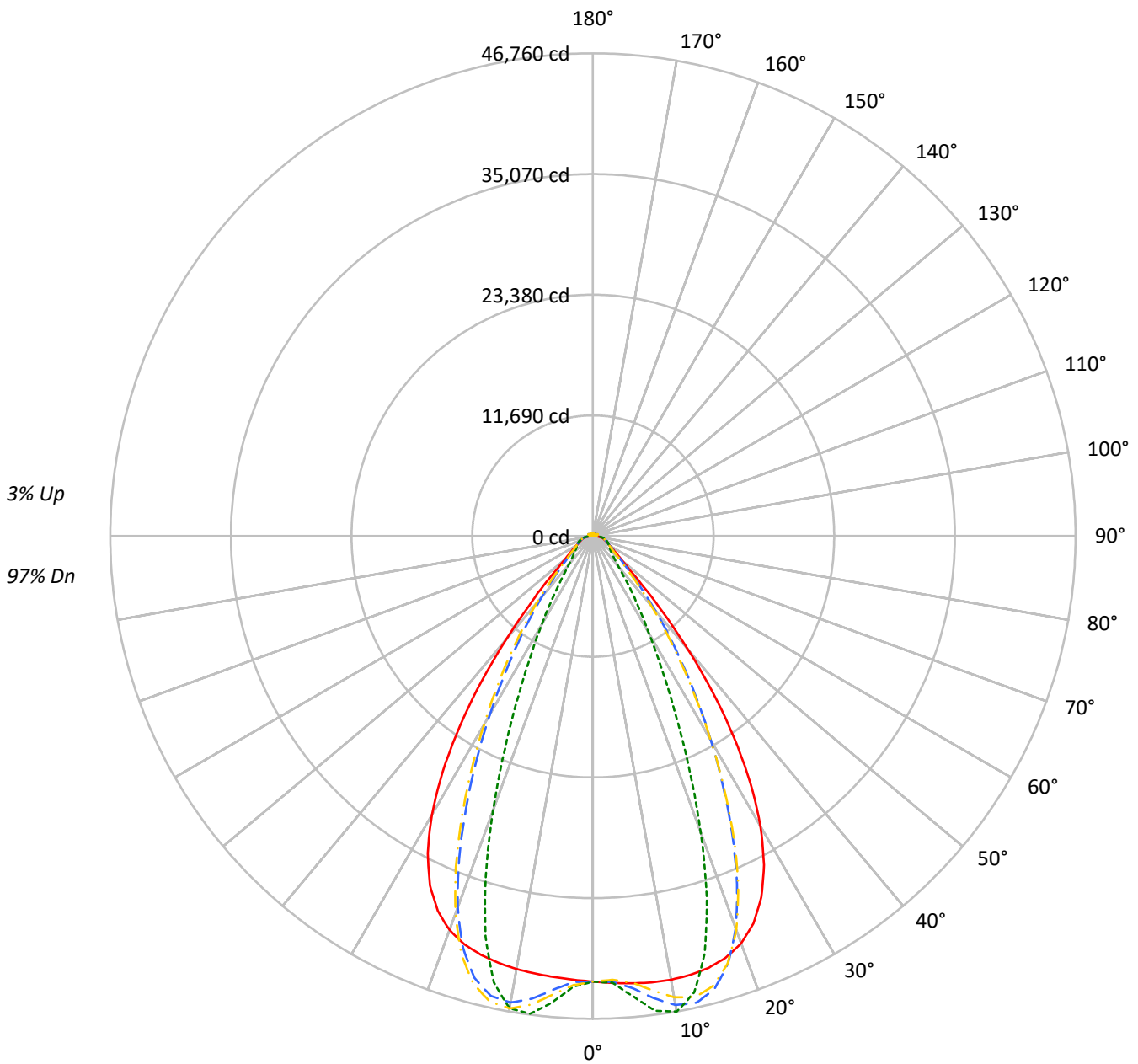
Summary

Lumens per Lamp: N/A
Luminaire Lumens: 51098.9 lumens
Efficiency: N/A
Efficacy: 168.4 lumens/watt
Spacing Criteria (0/90/45): 1.13 / 0.77 / 0.88
Luminous Opening: Vertical Cylinder (Dia: 1.71' x H: 0.1')
CIE Type: Direct

Input Watts (W): 303.4
Input Voltage (V): NR
Input Current (Ain): NR
Voltage Rise (V): NR
Power Factor: NR
Total Harmonic Distortion (THDi): NR
Frequency (hertz): 60
Stabilization Time: NR
Operation Time: NR
Ambient Temperature (°C): NR
Test Distance: 24 FT

TEST NUMBER: P1444842
CATALOG NUMBER: EHBR1-54-UNV-TA-L940-UPL12

Luminous Intensity Polar Plot



— 0°-180° - - 45°-225° - · - · 90°-270° - · - · 135°-315°



TEST NUMBER: P1444842
 CATALOG NUMBER: EHBR1-54-UNV-TA-L940-UPL12

COEFFICIENT OF UTILIZATION - ZONAL CAVITY METHOD:

RF	20				20				20				20				20				
RC	80				70				50				30				10			0	
RW	70	50	30	10	70	50	30	10	50	30	10	50	30	10	50	30	10	50	30	10	0
RCR																					
0	118	118	118	118	115	115	115	115	110	110	110	104	104	104	99	99	99	99	99	99	97
1	111	108	105	102	108	105	103	100	101	99	97	97	95	93	93	91	90	93	91	90	88
2	105	99	94	90	102	97	92	88	93	89	86	89	86	84	86	84	82	86	84	82	80
3	98	91	85	80	96	89	84	79	86	81	78	83	79	76	80	77	74	80	77	74	73
4	92	84	77	72	90	82	76	72	80	75	71	77	73	69	75	71	68	75	71	68	67
5	87	78	71	66	85	76	70	66	74	69	65	72	67	64	70	66	63	70	66	63	61
6	82	72	65	61	81	71	65	60	69	64	60	68	63	59	66	62	58	66	62	58	57
7	78	67	61	56	76	67	60	56	65	59	55	63	58	55	62	58	54	62	58	54	53
8	74	63	56	52	72	62	56	52	61	55	51	60	55	51	58	54	50	58	54	50	49
9	70	59	53	48	69	59	52	48	57	52	48	56	51	48	55	51	47	55	51	47	46
10	66	56	49	45	65	55	49	45	54	49	45	53	48	45	52	48	44	52	48	44	43

AVERAGE LUMINANCE (cd/sqm):

	0°	90°	180°	270°
0°	202699	202699	202699	202699
5°	203680	209620	200830	212366
10°	205381	220085	200455	218628
15°	206388	199505	200105	191472
20°	204254	148624	197569	137513
25°	193335	93996	186945	85285
30°	168893	56485	162351	51622
35°	129981	35444	122504	31397
40°	82225	22234	75228	20893
45°	42380	17321	41678	17037
50°	24847	15407	24085	15167
55°	19036	14577	18331	14445
60°	16106	14891	15421	14698
65°	15128	15549	14549	15020
70°	14780	16282	14043	15669
75°	15803	17268	14948	16505
80°	16353	19121	14827	17454
85°	15403	18449	12444	15799

MAXIMUM LUMINANCE 45°-90°:

Horizontal Angle: 25°
 Vertical Angle: 45°
 Luminance: 64857 cd/sqm



TEST NUMBER: P1444842
 CATALOG NUMBER: EHBR1-54-UNV-TA-L940-UPL12

ZONAL LUMENS:

Zone	Lumens	% Fixture
0°-10°	4253.8	8.3
10°-20°	11966.5	23.4
20°-30°	13628.9	26.7
30°-40°	9795.8	19.2
40°-50°	4517.8	8.8
50°-60°	2162.0	4.2
60°-70°	1577.5	3.1
70°-80°	1198.4	2.3
80°-90°	547.1	1.1
90°-100°	47.3	0.1
100°-110°	209.1	0.4
110°-120°	385.1	0.8
120°-130°	252.0	0.5
130°-140°	183.3	0.4
140°-150°	153.0	0.3
150°-160°	117.6	0.2
160°-170°	76.4	0.1
170°-180°	27.2	0.1
0°-30°	29849.2	58.4
0°-40°	39645.1	77.6
0°-60°	46324.9	90.7
0°-90°	49647.9	97.2
90°-120°	641.4	1.3
90°-150°	1229.8	2.4
90°-180°	1451.0	2.8
0°-180°	51098.9	100.0

CANDELA DISTRIBUTION:

	0°	90°	180°	270°	360°	Flux
0°	43163	43163	43163	43163	43163	
5°	43489	44757	42880	45343	43489	4156
15°	43299	41855	41981	40170	43299	12200
25°	38609	18771	37333	17031	38609	17502
35°	23856	6505	22484	5762	23856	14641
45°	6857	2802	6743	2756	6857	5832
55°	2572	1970	2477	1952	2572	2375
65°	1579	1623	1519	1568	1579	1577
75°	1113	1216	1053	1163	1113	1158
85°	529	634	428	543	529	497
90°	128	166	26	35	128	82
95°	21	23	21	23	21	20
105°	82	100	58	100	82	106
115°	342	401	359	401	342	318
125°	281	271	315	273	281	256
135°	253	203	270	207	253	196
145°	252	225	264	232	252	158
155°	254	246	267	251	254	118
165°	270	264	278	267	270	77
175°	286	287	290	288	286	27
180°	290	290	290	290	290	



TEST NUMBER: P1444842
 CATALOG NUMBER: EHBR1-54-UNV-TA-L940-UPL12

CANDELA DISTRIBUTION (FULL):

	0°	2.5°	5°	7.5°	10°	12.5°	15°	17.5°	20°	22.5°	25°
0°	43163.3	43163.3	43163.3	43163.3	43163.3	43163.3	43163.3	43163.3	43163.3	43163.3	43163.3
2.5°	43328.2	43324.7	43324.1	43321.1	43320.2	43320.2	43318.8	43315.3	43313.0	43308.1	43302.5
5°	43489.0	43487.1	43488.2	43488.6	43485.5	43478.8	43468.3	43455.3	43438.9	43423.6	43409.8
7.5°	43613.3	43616.4	43620.2	43619.4	43610.0	43594.1	43572.5	43560.4	43567.6	43591.0	43644.8
10°	43636.0	43654.6	43661.8	43659.5	43640.7	43627.1	43632.3	43678.1	43769.1	43890.6	44056.6
12.5°	43547.5	43570.3	43569.4	43562.0	43543.7	43562.3	43628.5	43764.6	43959.8	44199.3	44480.2
15°	43299.2	43328.6	43320.2	43310.5	43298.3	43359.3	43491.5	43728.0	44029.4	44367.1	44712.7
17.5°	42816.8	42852.3	42835.1	42824.0	42813.8	42928.0	43155.3	43501.5	43881.1	44263.1	44590.7
20°	41980.2	42004.0	41962.9	41943.5	41959.9	42183.7	42518.4	42960.6	43360.7	43721.9	43945.9
22.5°	40614.9	40644.4	40567.2	40558.3	40653.6	40997.3	41421.0	41915.2	42291.2	42577.5	42663.8
25°	38608.9	38638.0	38546.2	38601.1	38763.3	39231.4	39736.0	40264.7	40585.5	40797.5	40739.0
27.5°	35901.2	35927.8	35840.8	35952.8	36209.2	36824.4	37418.2	37991.7	38277.6	38426.2	38237.9
30°	32486.4	32541.5	32438.7	32595.0	32986.4	33785.2	34465.5	35108.6	35393.7	35506.8	35213.7
32.5°	28430.6	28509.1	28395.7	28628.3	29174.4	30133.9	30906.7	31625.3	31940.5	32069.7	31738.6
35°	23856.1	23968.7	23838.7	24187.7	24861.3	25929.7	26785.6	27587.8	27961.2	28144.2	27810.6
37.5°	19009.7	19117.0	19046.7	19512.3	20252.0	21359.5	22233.1	23098.5	23520.1	23794.8	23531.9
40°	14251.6	14349.8	14403.1	14935.6	15631.3	16675.2	17514.1	18370.5	18842.2	19187.0	19024.8
42.5°	10058.8	10157.8	10338.9	10852.7	11433.0	12297.0	13015.6	13784.4	14235.1	14602.9	14540.3
45°	6856.9	6971.9	7198.7	7619.5	8039.1	8658.9	9186.7	9784.6	10152.7	10489.6	10493.6
47.5°	4805.0	4885.7	5088.5	5375.8	5649.3	6425.3	6457.1	6751.0	6998.4	7250.3	7282.9
50°	3703.1	3751.7	3859.2	4019.4	4174.3	4375.8	4560.2	4773.1	4925.4	5063.5	5096.5
52.5°	3043.7	3074.6	3129.3	3216.0	3305.9	3415.5	3514.2	3631.1	3714.0	3787.9	3803.4
55°	2572.5	2598.1	2679.5	2695.9	2798.8	2818.6	2862.5	2933.7	2981.8	3026.1	3037.2
57.5°	2216.9	2235.4	2252.7	2289.6	2321.3	2367.4	2404.5	2455.5	2485.9	2517.9	2520.7
60°	1936.2	1949.7	1962.0	1987.6	2009.2	2041.2	2066.8	2101.5	2123.2	2147.3	2150.0
62.5°	1727.5	1737.1	1745.3	1762.2	1777.6	1802.2	1822.5	1851.5	1871.8	1890.3	1894.5
65°	1579.0	1586.1	1591.3	1604.2	1617.6	1638.6	1656.9	1680.6	1695.5	1709.8	1712.7
67.5°	1447.6	1454.3	1459.7	1471.3	1480.7	1496.3	1508.7	1526.4	1537.6	1549.0	1549.3
70°	1296.9	1303.1	1307.3	1318.2	1325.6	1339.1	1349.0	1365.0	1376.5	1389.2	1392.3
72.5°	1192.6	1196.2	1201.8	1211.8	1222.1	1236.6	1249.8	1266.5	1280.4	1293.5	1299.1
75°	1113.2	1117.5	1121.2	1129.7	1136.9	1149.1	1159.0	1174.2	1186.4	1200.4	1207.3
77.5°	998.7	1003.7	1006.8	1015.3	1021.5	1033.2	1040.6	1054.2	1064.1	1076.9	1083.1
80°	860.3	864.9	867.2	875.2	880.1	890.8	898.1	911.1	919.5	932.3	939.8
82.5°	706.9	711.4	712.6	720.2	722.9	731.7	736.9	750.4	760.7	777.3	788.8
85°	529.4	530.9	533.5	531.6	542.3	543.0	555.1	557.3	573.3	577.5	595.7
87.5°	323.7	328.4	330.8	338.2	341.4	348.7	351.0	358.8	363.2	372.1	376.3
90°	127.9	134.7	136.6	144.6	146.3	153.4	154.7	162.7	164.5	172.9	175.2
92.5°	19.1	20.0	20.8	22.2	23.1	24.9	26.3	27.6	28.5	30.3	32.2
95°	21.1	22.2	23.2	24.2	25.2	26.4	27.4	28.4	29.4	30.5	33.4
97.5°	25.8	26.7	27.6	28.5	29.4	30.3	31.2	32.1	33.0	33.8	37.5
100°	32.5	33.3	34.0	34.8	35.6	36.3	37.1	37.9	38.7	39.4	46.0
102.5°	50.6	53.3	56.0	58.7	61.4	64.0	66.9	69.4	72.1	74.8	88.9
105°	81.5	88.7	96.2	103.4	110.8	118.2	125.6	132.6	139.9	147.2	170.4
107.5°	134.1	147.5	161.2	174.8	188.4	202.0	215.6	229.0	242.5	255.8	279.4
110°	240.3	250.9	261.9	272.8	283.6	294.5	305.3	315.8	326.8	337.5	354.6



TEST NUMBER: P1444842
 CATALOG NUMBER: EHBR1-54-UNV-TA-L940-UPL12

CANDELA DISTRIBUTION (continued):

	0°	2.5°	5°	7.5°	10°	12.5°	15°	17.5°	20°	22.5°	25°
112.5°	322.0	326.7	331.5	336.4	341.3	345.7	350.6	355.3	360.1	364.6	376.7
115°	342.5	343.9	345.6	346.9	348.5	349.9	351.3	352.6	354.2	355.3	363.3
117.5°	337.5	336.9	336.3	335.8	334.9	334.3	333.6	332.7	331.9	331.0	335.4
120°	321.4	319.5	317.7	315.5	313.6	311.4	309.6	307.3	305.1	302.8	304.5
122.5°	300.1	297.8	295.8	293.2	290.9	288.3	286.0	283.0	280.7	278.1	278.0
125°	281.4	278.8	276.9	274.3	271.6	269.1	266.5	263.7	261.0	258.1	257.7
127.5°	266.1	264.3	262.5	260.3	258.3	256.0	253.8	251.4	249.3	246.6	246.0
130°	258.6	257.0	255.2	253.1	251.2	248.9	246.6	244.3	242.1	239.6	238.8
132.5°	253.8	252.5	251.0	249.3	247.5	245.3	243.5	241.2	239.3	237.2	236.4
135°	252.7	251.2	250.0	248.3	246.6	244.5	242.4	240.3	238.3	236.0	235.3
137.5°	252.4	251.2	249.9	248.0	246.4	244.3	242.5	240.2	238.2	236.1	235.2
140°	252.4	251.2	249.8	248.1	246.5	244.7	242.7	240.7	238.6	236.5	235.9
142.5°	251.4	250.1	249.0	247.4	246.0	244.2	242.4	240.4	238.7	236.6	236.2
145°	251.7	250.7	249.8	248.4	246.9	245.1	243.6	241.6	240.1	238.3	237.8
147.5°	252.4	251.4	250.7	249.3	248.3	246.5	245.1	243.3	241.9	240.4	240.1
150°	252.9	252.1	251.4	250.2	249.0	247.5	246.2	244.7	243.3	241.8	241.5
152.5°	252.8	251.7	251.2	250.1	248.9	247.4	246.4	244.8	243.6	242.1	241.8
155°	254.5	253.6	252.7	251.7	250.6	249.4	248.1	246.9	245.8	244.4	244.1
157.5°	257.4	256.4	255.6	254.5	253.8	252.6	251.5	250.4	249.4	248.3	247.8
160°	261.5	260.6	259.7	258.7	257.7	256.5	255.6	254.5	253.8	252.6	252.2
162.5°	265.9	264.9	263.9	263.0	262.1	260.9	260.0	259.2	258.3	257.0	256.8
165°	270.5	269.9	269.1	268.2	267.5	266.6	265.9	264.9	264.1	263.1	262.9
167.5°	276.4	275.5	275.0	274.2	273.3	272.6	271.8	270.8	270.4	269.3	269.1
170°	280.7	279.9	279.4	278.9	278.3	277.6	277.2	276.5	275.9	275.2	275.0
172.5°	284.2	283.5	283.2	282.9	282.3	281.9	281.5	281.0	280.7	280.1	280.1
175°	286.2	285.7	285.6	285.3	285.0	284.6	284.5	284.2	284.2	283.7	283.6
177.5°	288.6	288.5	288.5	288.3	288.3	288.2	288.0	287.7	287.5	287.5	287.5
180°	290.3	290.3	290.3	290.3	290.3	290.3	290.3	290.3	290.3	290.3	290.3



TEST NUMBER: P1444842
 CATALOG NUMBER: EHBR1-54-UNV-TA-L940-UPL12

CANDELA DISTRIBUTION (continued):

	27.5°	30°	32.5°	35°	37.5°	40°	42.5°	45°	47.5°	50°	52.5°
0°	43163.3	43163.3	43163.3	43163.3	43163.3	43163.3	43163.3	43163.3	43163.3	43163.3	43163.3
2.5°	43298.3	43293.0	43285.8	43276.7	43268.9	43259.8	43238.1	43231.8	43239.0	43243.8	43253.7
5°	43401.2	43404.2	43405.4	43425.0	43442.0	43484.4	43816.5	43948.4	44050.5	44115.3	44213.7
7.5°	43711.4	43811.2	43909.9	44042.7	44157.2	44311.9	44892.9	45140.2	45316.0	45442.4	45597.9
10°	44237.0	44454.9	44659.2	44898.5	45104.2	45339.8	45880.7	46121.6	46273.7	46384.4	46487.8
12.5°	44766.5	45068.7	45341.8	45608.1	45830.8	46035.0	46225.3	46309.6	46316.8	46320.3	46265.4
15°	45042.3	45331.2	45571.8	45747.9	45878.8	45936.6	45609.3	45437.5	45220.3	45041.5	44747.3
17.5°	44868.2	45041.5	45145.5	45135.2	45081.2	44900.1	43972.6	43462.5	42956.0	42499.6	41901.1
20°	44094.5	44081.2	43990.8	43734.7	43426.1	42946.3	41356.1	40438.7	39551.7	38772.7	37827.6
22.5°	42654.9	42428.4	42112.6	41560.4	40946.9	40108.6	37829.8	36480.4	35245.5	34154.7	32932.7
25°	40569.1	40103.1	39520.7	38644.0	37690.7	36467.9	33659.2	31980.7	30498.2	29212.3	27802.4
27.5°	37899.7	37197.8	36344.1	35130.9	33839.2	32272.7	29158.9	27306.4	25714.9	24336.4	22835.7
30°	34739.4	33826.5	32724.2	31218.3	29660.4	27883.6	24725.5	22849.3	21238.4	19820.1	18318.3
32.5°	31167.9	30098.7	28807.1	27116.8	25432.1	23605.3	20555.3	18739.2	17200.3	15835.9	14476.7
35°	27228.8	26082.2	24715.7	22991.8	21317.1	19541.0	16742.4	15104.9	13746.0	12539.9	11442.4
37.5°	23003.4	21877.6	20578.8	18954.0	17401.1	15791.6	13376.8	12004.6	10864.3	9863.3	9015.8
40°	18610.3	17625.0	16501.2	15096.6	13771.2	12430.9	10448.7	9359.4	8459.4	7696.0	7061.0
42.5°	14270.8	13507.3	12645.5	11535.4	10521.3	9500.6	7975.1	7168.0	6501.4	5951.9	5503.0
45°	10353.9	9843.2	9265.2	8493.5	7791.7	7079.9	5994.0	5426.9	4992.8	4638.5	4338.9
47.5°	7238.0	6941.7	6923.6	6210.4	5695.8	5260.5	4561.1	4202.8	3936.9	3722.1	3532.4
50°	5083.0	4939.7	4761.6	4507.1	4268.2	4022.3	3596.1	3379.5	3223.7	3093.6	2973.6
52.5°	3799.9	3725.5	3630.6	3495.6	3366.2	3227.9	2958.2	2820.3	2771.3	2650.2	2555.1
55°	3035.1	2992.4	2938.5	2859.1	2780.4	2748.9	2517.8	2415.4	2350.5	2302.7	2251.7
57.5°	2521.1	2489.3	2457.3	2403.6	2357.9	2302.7	2180.1	2127.6	2089.0	2060.9	2025.5
60°	2150.4	2131.4	2113.5	2081.9	2057.4	2027.6	1949.7	1920.1	1899.9	1882.9	1860.4
62.5°	1898.0	1888.3	1878.9	1862.2	1849.7	1833.6	1780.3	1766.0	1756.0	1747.5	1733.7
65°	1715.8	1708.8	1703.7	1692.4	1686.2	1676.8	1631.0	1621.4	1615.2	1612.1	1604.2
67.5°	1550.3	1542.9	1539.5	1531.5	1529.0	1523.1	1485.6	1480.4	1478.2	1479.3	1476.4
70°	1395.4	1392.3	1393.9	1392.7	1396.2	1397.3	1374.6	1374.5	1376.9	1381.6	1382.1
72.5°	1302.6	1302.6	1304.4	1305.1	1308.5	1310.2	1291.3	1290.3	1291.4	1295.0	1295.1
75°	1214.3	1215.8	1220.5	1222.1	1226.1	1227.0	1202.0	1199.1	1199.3	1202.7	1201.5
77.5°	1092.1	1097.4	1106.5	1111.3	1119.0	1120.4	1092.4	1089.1	1089.2	1092.5	1089.7
80°	953.4	963.5	978.0	988.1	999.9	1004.8	976.0	969.1	962.7	961.7	956.0
82.5°	806.1	818.4	835.9	844.9	857.6	860.5	812.3	803.2	797.8	798.2	792.9
85°	615.4	624.7	640.5	645.6	653.5	652.8	597.8	574.3	580.5	570.7	578.5
87.5°	386.0	391.5	401.4	402.7	406.3	405.5	350.2	339.3	336.1	336.2	332.2
90°	183.6	186.8	194.9	194.4	199.7	198.3	153.0	147.3	143.8	146.5	141.4
92.5°	34.7	36.4	38.8	40.7	43.0	45.2	42.2	42.8	41.3	38.9	37.6
95°	36.4	39.5	42.6	45.6	48.6	51.7	54.8	57.9	55.0	52.1	49.2
97.5°	41.1	44.7	48.2	51.7	55.3	59.0	62.6	66.2	63.2	59.7	56.6
100°	52.8	59.5	66.1	72.9	79.5	86.2	93.0	99.7	93.8	87.6	81.7
102.5°	103.0	117.3	131.5	145.7	159.9	174.1	188.7	203.0	189.2	175.4	161.6
105°	193.4	216.5	239.5	262.3	285.4	308.5	331.9	355.1	333.2	311.3	289.5
107.5°	302.6	326.1	349.1	372.3	395.7	419.0	443.0	466.4	445.0	423.3	402.1
110°	371.4	388.2	405.2	422.0	438.8	455.7	473.6	490.5	477.5	464.3	451.4



TEST NUMBER: P1444842
 CATALOG NUMBER: EHBR1-54-UNV-TA-L940-UPL12

CANDELA DISTRIBUTION (continued):

	27.5°	30°	32.5°	35°	37.5°	40°	42.5°	45°	47.5°	50°	52.5°
112.5°	388.4	400.5	412.4	424.1	435.8	447.7	461.1	473.3	466.5	459.4	452.8
115°	371.1	379.1	386.7	394.6	402.3	409.8	419.5	427.7	425.0	422.4	419.8
117.5°	339.3	343.4	347.5	351.5	355.3	359.3	365.7	370.0	369.7	369.4	369.2
120°	305.7	307.0	308.2	309.6	310.6	311.8	315.7	317.5	318.5	319.4	320.4
122.5°	278.1	278.1	278.0	277.9	277.8	277.6	280.8	281.4	281.6	281.9	282.3
125°	257.2	256.7	256.2	255.7	255.0	254.4	257.6	257.6	256.9	255.9	255.2
127.5°	245.1	244.3	243.3	242.6	241.4	240.6	243.4	243.3	241.7	240.0	238.1
130°	237.9	237.3	236.3	235.4	234.7	233.9	237.1	237.3	235.1	232.4	230.2
132.5°	235.4	234.8	233.7	233.1	232.3	231.3	235.0	235.2	232.9	230.1	227.7
135°	234.4	233.7	232.9	232.1	231.3	230.8	234.8	235.1	232.8	230.1	227.8
137.5°	234.2	233.6	232.8	232.3	231.4	230.9	235.3	235.9	233.9	231.5	229.6
140°	235.1	234.4	233.8	233.4	232.7	232.4	237.3	237.9	236.4	234.5	232.5
142.5°	235.4	235.1	234.7	234.6	234.1	234.0	239.7	240.6	239.2	237.6	236.2
145°	237.3	237.2	236.8	236.8	236.6	236.6	243.1	244.5	243.4	242.0	240.9
147.5°	239.3	239.2	238.9	238.8	238.7	239.1	246.0	247.4	246.7	245.7	244.8
150°	241.0	240.9	240.6	240.6	240.8	241.0	249.1	251.1	250.3	249.6	248.7
152.5°	241.4	241.3	241.1	241.0	240.9	241.3	251.4	253.7	253.1	252.2	251.7
155°	243.6	243.3	243.1	243.0	242.8	243.2	254.2	256.9	256.4	255.8	255.3
157.5°	247.4	247.0	246.4	246.3	246.1	246.0	258.1	261.1	260.5	260.0	259.6
160°	251.6	251.3	250.7	250.5	250.1	250.0	262.4	265.3	265.0	264.4	263.8
162.5°	256.2	256.3	255.8	255.5	255.2	255.3	267.7	270.9	270.2	269.6	269.2
165°	262.4	261.9	261.5	261.4	261.0	260.8	272.7	275.4	275.1	274.5	274.0
167.5°	268.5	268.4	267.9	267.8	267.5	267.6	278.6	281.2	280.9	280.2	279.9
170°	274.6	274.6	274.3	274.2	274.2	274.3	283.5	285.7	285.5	284.7	284.4
172.5°	280.0	280.1	280.1	280.0	280.0	280.1	287.9	289.9	289.6	289.2	288.7
175°	283.6	283.5	283.6	283.8	283.8	283.9	290.0	291.5	291.3	291.0	290.7
177.5°	287.7	287.6	287.8	287.9	288.1	288.2	291.9	292.7	292.6	292.6	292.4
180°	290.3	290.3	290.3	290.3	290.3	290.3	290.3	290.3	290.3	290.3	290.3



TEST NUMBER: P1444842
 CATALOG NUMBER: EHBR1-54-UNV-TA-L940-UPL12

CANDELA DISTRIBUTION (continued):

	55°	57.5°	60°	62.5°	65°	67.5°	70°	72.5°	75°	77.5°	80°
0°	43163.3	43163.3	43163.3	43163.3	43163.3	43163.3	43163.3	43163.3	43163.3	43163.3	43163.3
2.5°	43255.9	43271.1	43273.4	43291.1	43289.7	43310.8	43307.5	43324.7	43314.6	43328.9	43316.9
5°	44271.9	44364.0	44412.2	44502.1	44530.6	44611.0	44633.7	44707.2	44710.2	44768.5	44755.1
7.5°	45708.2	45844.0	45924.7	46035.9	46092.1	46184.8	46225.6	46294.0	46316.1	46370.5	46374.7
10°	46566.0	46631.9	46678.0	46709.0	46737.3	46750.6	46766.1	46762.0	46766.1	46760.0	46773.4
12.5°	46228.6	46132.3	46068.7	45948.0	45878.1	45744.9	45679.4	45551.3	45504.7	45394.7	45378.9
15°	44520.0	44184.4	43947.3	43602.4	43385.7	43046.4	42847.9	42541.8	42402.0	42158.7	42094.9
17.5°	41405.8	40782.8	40300.7	39682.2	39253.0	38675.1	38311.6	37833.2	37571.1	37185.3	37051.7
20°	37039.7	36117.9	35394.8	34533.3	33916.8	33148.7	32656.9	32036.7	31676.6	31202.8	31010.7
22.5°	31913.9	30766.3	29863.1	28845.3	28101.5	27245.5	26656.3	25985.3	25593.5	25078.7	24850.8
25°	26630.6	25365.1	24360.9	23288.7	22502.8	21644.6	21055.4	20396.1	19990.8	19502.0	19275.6
27.5°	21577.7	20296.6	19326.2	18329.4	17608.4	16834.1	16302.4	15726.8	15367.0	14949.8	14736.8
30°	17118.5	15988.7	15162.9	14335.6	13735.8	13107.0	12665.2	12188.2	11872.5	11515.3	11312.3
32.5°	13485.7	12613.4	11966.8	11310.3	10819.5	10293.9	9912.1	9491.2	9206.3	8887.3	8703.5
35°	10680.5	10002.7	9486.9	8946.6	8524.8	8077.3	7740.9	7377.6	7122.0	6847.3	6688.6
37.5°	8438.7	7899.7	7475.3	7026.5	6680.1	6309.3	6184.4	5767.5	5502.6	5283.5	5131.6
40°	6622.7	6194.1	5843.0	5499.7	5217.2	4936.0	4710.3	4487.6	4316.6	4159.8	4051.4
42.5°	5171.8	4861.3	4604.8	4353.4	4147.3	3942.4	3778.9	3625.5	3510.3	3407.8	3337.9
45°	4111.4	3897.8	3719.6	3542.5	3397.1	3260.3	3150.3	3052.4	2978.0	2916.4	2872.7
47.5°	3377.6	3231.3	3105.6	2986.1	2887.4	2797.8	2724.1	2700.1	2620.2	2566.2	2545.7
50°	2870.5	2782.2	2686.7	2598.5	2532.6	2467.0	2419.2	2372.3	2342.4	2317.7	2310.1
52.5°	2492.0	2424.5	2371.4	2315.5	2272.0	2225.3	2192.3	2161.1	2144.7	2131.7	2130.1
55°	2210.6	2163.4	2128.3	2090.8	2064.7	2037.3	2020.3	2003.8	1996.6	1990.0	1990.5
57.5°	1997.7	1966.1	1943.3	1919.0	1904.9	1891.8	1887.4	1883.3	1885.6	1886.5	1890.2
60°	1842.5	1822.0	1807.7	1793.7	1787.8	1783.6	1786.8	1790.5	1798.1	1804.1	1809.5
62.5°	1723.6	1712.0	1704.9	1697.5	1696.8	1697.1	1703.5	1709.8	1719.2	1726.2	1731.5
65°	1601.3	1594.6	1592.4	1587.5	1589.9	1591.3	1599.1	1603.8	1613.2	1618.9	1625.6
67.5°	1477.6	1476.0	1477.5	1477.5	1481.8	1485.5	1492.9	1498.3	1506.3	1511.4	1516.8
70°	1386.3	1386.9	1390.3	1390.9	1395.6	1398.1	1404.5	1408.0	1415.3	1419.5	1426.2
72.5°	1297.5	1296.1	1296.9	1294.8	1296.4	1295.7	1299.3	1301.0	1307.1	1310.5	1318.5
75°	1202.9	1198.9	1198.0	1193.7	1193.8	1190.8	1192.2	1192.0	1196.0	1197.7	1203.4
77.5°	1088.7	1082.0	1078.8	1071.7	1071.5	1068.8	1071.7	1073.3	1080.4	1083.8	1090.3
80°	952.1	941.6	936.8	928.5	929.9	929.4	936.5	941.7	950.4	952.0	960.2
82.5°	791.3	780.6	775.5	767.4	769.3	769.4	775.9	777.0	784.4	787.7	797.3
85°	566.6	570.7	559.5	560.2	557.8	562.2	566.6	572.0	578.3	588.7	596.7
87.5°	333.7	332.2	336.2	336.7	342.5	345.5	354.8	360.1	370.5	378.6	393.3
90°	142.1	137.1	140.7	139.4	145.3	144.1	149.5	147.2	153.7	154.6	162.9
92.5°	35.0	33.6	31.1	29.5	27.2	25.9	24.3	24.0	22.5	22.3	20.8
95°	46.4	43.5	40.7	37.8	35.0	32.1	31.1	30.1	29.0	27.9	26.9
97.5°	53.6	50.6	47.5	44.3	41.3	38.2	37.5	36.8	36.1	35.4	34.8
100°	75.6	69.7	63.7	57.7	51.7	45.8	45.3	44.7	44.2	43.6	43.0
102.5°	148.1	134.3	120.8	107.1	93.6	79.8	77.5	75.1	72.8	70.4	68.0
105°	267.5	245.6	223.8	202.0	180.3	158.4	152.0	145.2	138.7	132.2	125.8
107.5°	380.6	359.1	337.8	316.7	295.3	274.0	263.6	253.4	242.9	232.6	222.5
110°	438.1	425.1	412.3	399.1	386.4	373.5	363.4	353.7	343.7	333.7	324.0



TEST NUMBER: P1444842
 CATALOG NUMBER: EHBR1-54-UNV-TA-L940-UPL12

CANDELA DISTRIBUTION (continued):

	55°	57.5°	60°	62.5°	65°	67.5°	70°	72.5°	75°	77.5°	80°
112.5°	445.9	439.2	432.3	425.6	419.1	412.3	407.4	402.5	397.7	392.8	387.7
115°	417.1	414.6	412.1	409.6	407.3	404.8	404.2	403.8	403.0	402.6	402.3
117.5°	368.8	368.5	368.1	368.0	367.9	367.8	370.0	372.0	374.3	376.9	379.3
120°	321.2	322.1	322.9	324.1	325.1	326.3	329.0	332.0	334.9	338.4	341.6
122.5°	282.5	282.8	282.9	283.5	283.8	284.2	286.9	289.7	292.5	295.6	298.9
125°	253.9	252.9	252.0	251.0	250.0	249.4	251.2	253.2	255.5	257.9	260.2
127.5°	236.3	234.3	232.4	230.7	228.6	227.1	227.7	228.6	229.4	230.5	231.6
130°	227.6	225.2	222.4	220.2	217.4	215.2	214.8	214.6	214.4	214.4	214.3
132.5°	224.9	222.3	219.5	216.7	214.0	211.3	210.2	209.2	207.9	207.3	206.6
135°	225.0	222.7	219.8	217.2	214.3	211.9	210.4	209.0	207.6	206.4	205.2
137.5°	227.2	225.1	222.8	220.6	218.1	216.0	214.0	212.6	210.8	209.8	208.2
140°	230.5	228.8	226.6	224.6	222.6	220.8	219.0	217.8	216.2	215.1	213.8
142.5°	234.4	232.8	231.1	229.6	227.9	226.3	224.8	223.5	222.1	221.0	219.7
145°	239.6	238.4	237.1	235.8	234.4	233.2	231.7	230.8	229.6	228.4	227.7
147.5°	243.8	242.7	241.7	240.7	239.5	238.4	237.3	236.7	235.4	234.8	233.8
150°	247.7	246.8	245.8	245.1	243.9	243.1	242.1	241.5	240.5	240.1	239.2
152.5°	250.7	250.0	249.0	248.5	247.4	246.5	245.8	245.2	244.5	243.9	243.0
155°	254.4	253.8	253.0	252.4	251.4	250.9	250.1	249.3	248.7	248.0	247.3
157.5°	258.9	258.3	257.4	256.9	256.0	255.4	254.7	254.1	253.3	252.8	252.0
160°	263.3	262.7	262.0	261.3	260.7	260.0	259.2	258.5	257.8	257.2	256.3
162.5°	268.4	267.7	267.1	266.5	265.5	265.0	264.1	263.6	262.9	262.3	261.4
165°	273.3	272.7	272.0	271.4	270.9	270.3	269.4	268.9	268.0	267.5	266.5
167.5°	279.2	278.7	278.1	277.6	276.9	276.2	275.7	275.0	274.3	273.5	272.7
170°	284.1	283.3	282.8	282.2	281.6	280.9	280.3	279.6	278.9	278.6	277.6
172.5°	288.3	288.1	287.5	287.2	286.5	286.0	285.6	285.1	284.6	284.0	283.6
175°	290.5	290.4	290.2	289.7	289.6	289.2	288.9	288.7	288.4	288.3	287.8
177.5°	292.4	292.3	292.3	292.0	291.8	291.8	291.5	291.4	291.3	291.0	291.0
180°	290.3	290.3	290.3	290.3	290.3	290.3	290.3	290.3	290.3	290.3	290.3



TEST NUMBER: P1444842
 CATALOG NUMBER: EHBR1-54-UNV-TA-L940-UPL12

CANDELA DISTRIBUTION (continued):

	82.5°	85°	87.5°	90°	92.5°	95°	97.5°	100°	102.5°	105°	107.5°
0°	43163.3	43163.3	43163.3	43163.3	43163.3	43163.3	43163.3	43163.3	43163.3	43163.3	43163.3
2.5°	43329.3	43318.4	43323.6	43303.3	43308.1	43283.6	43281.4	43253.7	43251.0	43224.9	43215.1
5°	44796.4	44772.3	44799.5	44757.1	44765.4	44710.2	44705.6	44634.2	44609.6	44520.4	44481.8
7.5°	46408.7	46399.7	46416.3	46380.8	46379.6	46330.4	46310.1	46246.0	46206.4	46112.6	46052.8
10°	46762.0	46770.3	46756.7	46760.0	46740.8	46735.5	46715.9	46703.4	46671.3	46646.9	46611.2
12.5°	45295.2	45304.0	45248.1	45283.6	45255.5	45321.0	45315.7	45392.8	45404.7	45502.2	45539.2
15°	41905.3	41894.8	41787.5	41855.1	41818.8	41962.4	41994.6	42187.8	42291.2	42539.3	42691.7
17.5°	36784.4	36756.8	36605.6	36687.9	36646.0	36857.9	36928.8	37238.0	37430.7	37830.5	38115.4
20°	30680.0	30627.1	30450.2	30546.6	30503.4	30744.0	30845.4	31219.0	31467.5	31997.1	32373.8
22.5°	24499.8	24416.1	24242.9	24333.0	24292.2	24541.4	24673.3	25048.1	25332.9	25876.5	26316.3
25°	18950.0	18875.5	18708.0	18771.0	18755.8	18966.6	19084.1	19438.6	19718.4	20236.2	20655.9
27.5°	14453.6	14376.0	14224.7	14269.4	14254.0	14433.6	14544.3	14840.5	15081.2	15517.1	15885.7
30°	11062.2	10968.5	10840.3	10864.9	10854.3	10999.9	11103.3	11352.7	11559.0	11927.4	12244.9
32.5°	8479.1	8385.1	8267.1	8278.7	8263.1	8377.4	8462.5	8679.4	8859.2	9172.4	9448.8
35°	6487.7	6597.5	6345.8	6505.3	6339.2	6583.0	6495.3	6630.9	6785.5	7049.5	7280.0
37.5°	4987.5	4910.9	4846.0	4839.2	4838.9	4895.3	4962.0	5092.6	5228.9	5425.5	5628.6
40°	3952.3	3898.6	3856.6	3853.7	3856.6	3896.8	3946.1	4036.4	4136.1	4277.4	4426.6
42.5°	3278.1	3242.4	3217.2	3215.4	3223.4	3251.8	3286.1	3339.7	3404.6	3496.1	3598.5
45°	2837.2	2817.4	2803.3	2802.5	2806.2	2821.0	2840.7	2874.1	2915.3	2972.4	3037.2
47.5°	2527.8	2523.0	2514.2	2514.5	2510.5	2516.7	2518.9	2537.6	2559.5	2602.6	2687.1
50°	2302.6	2302.6	2296.5	2296.2	2290.5	2290.1	2285.3	2292.7	2302.9	2329.6	2356.7
52.5°	2124.5	2123.9	2117.4	2116.0	2110.0	2109.6	2105.5	2108.4	2109.8	2123.2	2139.4
55°	1985.3	1981.2	1972.6	1969.9	1967.4	1971.0	1969.4	1969.5	1967.7	1973.4	1978.2
57.5°	1885.6	1880.2	1872.0	1869.5	1868.9	1873.1	1873.3	1871.8	1864.3	1859.2	1851.9
60°	1806.6	1801.1	1792.3	1790.1	1791.4	1797.1	1796.8	1791.9	1780.7	1771.0	1759.7
62.5°	1728.9	1726.7	1722.2	1721.6	1720.5	1721.4	1717.4	1712.3	1701.3	1690.8	1678.5
65°	1624.8	1625.9	1622.6	1623.0	1619.0	1618.4	1612.3	1607.4	1596.2	1586.7	1574.1
67.5°	1516.6	1517.5	1514.8	1514.8	1512.6	1513.0	1509.3	1504.7	1495.2	1487.6	1477.8
70°	1427.6	1429.8	1428.2	1428.7	1426.2	1425.1	1419.4	1414.9	1405.2	1398.8	1389.9
72.5°	1320.9	1325.6	1325.5	1326.7	1322.8	1320.9	1314.0	1308.4	1299.6	1294.4	1287.4
75°	1205.6	1211.9	1213.7	1216.4	1211.0	1208.1	1200.5	1196.0	1188.9	1185.9	1181.2
77.5°	1093.2	1100.1	1106.7	1112.8	1103.9	1096.1	1086.7	1079.5	1069.2	1065.2	1058.1
80°	967.0	979.2	993.7	1005.9	990.1	974.0	958.6	947.0	933.4	927.8	918.9
82.5°	802.2	814.7	823.0	830.8	819.8	808.2	793.1	783.0	768.3	762.9	752.5
85°	609.5	625.0	630.0	634.1	627.1	620.8	606.8	587.7	578.5	563.9	556.4
87.5°	400.9	410.2	411.9	413.4	409.1	406.0	396.9	387.9	372.1	360.5	346.5
90°	162.1	168.1	164.1	166.1	161.1	162.0	153.2	150.6	138.0	133.5	122.2
92.5°	20.2	18.8	18.1	17.0	18.7	18.9	20.5	20.8	22.2	22.5	24.0
95°	25.9	24.8	23.8	22.7	23.6	24.4	25.2	26.1	26.8	27.7	28.5
97.5°	34.0	33.4	32.6	32.0	32.4	32.9	33.4	33.9	34.4	34.8	35.5
100°	42.5	41.9	41.4	40.8	40.8	40.8	40.8	40.8	40.8	40.8	40.8
102.5°	65.7	63.4	60.9	58.6	60.2	61.8	63.4	64.9	66.6	68.2	70.0
105°	119.3	112.8	106.3	99.9	106.1	112.4	118.7	124.9	131.2	137.7	144.0
107.5°	212.0	201.8	191.6	181.4	192.9	204.4	215.8	227.1	238.6	250.0	261.6
110°	314.2	304.6	294.8	285.1	297.2	309.3	321.4	333.5	345.7	357.8	370.2



TEST NUMBER: P1444842
 CATALOG NUMBER: EHBR1-54-UNV-TA-L940-UPL12

CANDELA DISTRIBUTION (continued):

	82.5°	85°	87.5°	90°	92.5°	95°	97.5°	100°	102.5°	105°	107.5°
112.5°	382.9	378.2	373.5	368.7	376.6	384.3	392.1	400.3	408.1	416.1	423.9
115°	401.8	401.5	401.3	401.0	404.7	408.3	412.1	415.9	419.7	423.3	427.4
117.5°	381.7	384.1	386.8	389.4	390.6	391.8	393.2	394.4	395.8	397.2	398.7
120°	345.0	348.1	351.6	355.1	354.7	354.2	353.8	353.4	353.4	353.1	353.2
122.5°	302.1	305.3	308.8	312.2	311.2	310.1	309.2	308.4	307.8	307.2	306.5
125°	263.0	265.5	268.3	271.2	270.2	269.2	268.1	267.6	266.9	266.2	265.9
127.5°	233.2	234.7	236.1	237.8	237.3	236.8	236.7	236.5	236.5	236.6	236.9
130°	214.6	215.0	215.7	216.1	216.3	216.4	217.1	217.4	218.3	218.8	220.1
132.5°	206.5	205.9	205.9	205.7	206.3	206.8	207.9	208.7	210.1	211.1	213.0
135°	204.5	203.8	203.3	202.9	203.8	204.4	205.5	206.7	208.2	209.9	211.7
137.5°	207.5	206.5	205.9	205.1	205.9	206.7	207.9	209.1	210.5	212.1	214.1
140°	213.0	211.9	211.6	210.7	211.6	212.2	213.4	214.6	216.0	217.7	219.5
142.5°	218.9	217.8	217.4	216.9	217.4	218.1	219.4	220.3	221.7	222.9	224.7
145°	226.8	225.8	225.6	225.0	225.4	225.9	226.7	227.5	228.4	229.4	230.9
147.5°	233.2	232.5	232.3	231.7	232.1	232.4	232.9	233.4	234.3	235.1	236.1
150°	239.1	238.2	237.8	237.6	237.8	237.8	238.3	238.4	239.0	239.4	240.4
152.5°	242.8	241.9	241.9	241.6	241.5	241.6	241.9	242.0	242.4	242.7	243.5
155°	246.9	246.4	246.0	245.5	245.3	245.1	245.3	245.1	245.4	245.4	245.7
157.5°	251.6	251.1	250.7	250.1	249.9	249.4	249.3	249.1	249.1	248.7	248.7
160°	255.9	255.1	254.5	254.0	253.7	253.2	253.2	252.8	252.7	252.6	252.5
162.5°	261.0	260.3	259.8	259.2	258.9	258.3	257.9	257.3	256.9	256.7	256.5
165°	265.8	265.2	264.6	263.7	263.5	263.1	262.6	262.3	262.1	261.6	261.5
167.5°	272.3	271.4	270.9	270.2	269.8	269.1	268.9	268.3	267.9	267.5	267.5
170°	277.3	276.6	276.2	275.7	275.3	274.8	274.6	274.2	274.0	273.9	273.9
172.5°	283.2	282.7	282.3	281.9	281.5	281.3	281.1	280.9	280.6	280.6	280.4
175°	287.6	287.3	287.1	286.9	286.6	286.5	286.3	286.2	286.1	285.9	285.9
177.5°	290.5	290.4	290.3	290.2	290.0	290.0	290.0	290.0	290.0	289.8	289.7
180°	290.3	290.3	290.3	290.3	290.3	290.3	290.3	290.3	290.3	290.3	290.3



TEST NUMBER: P1444842
 CATALOG NUMBER: EHBR1-54-UNV-TA-L940-UPL12

CANDELA DISTRIBUTION (continued):

	110°	112.5°	115°	117.5°	120°	122.5°	125°	127.5°	130°	132.5°	135°
0°	43163.3	43163.3	43163.3	43163.3	43163.3	43163.3	43163.3	43163.3	43163.3	43163.3	43163.3
2.5°	43187.2	43175.8	43145.9	43131.2	43103.5	43089.5	43068.0	43054.0	43036.6	43023.7	43017.0
5°	44383.7	44328.5	44217.9	44149.7	44030.2	43951.5	43832.8	43745.8	43623.2	43532.8	43417.0
7.5°	45940.6	45855.8	45714.0	45606.5	45439.3	45311.5	45123.9	44973.8	44766.5	44594.4	44382.6
10°	46574.4	46524.9	46461.3	46392.1	46299.5	46208.6	46080.5	45950.0	45775.9	45602.8	45376.6
12.5°	45637.6	45684.1	45775.9	45818.8	45889.0	45912.9	45945.0	45929.9	45901.5	45830.8	45728.2
15°	42984.4	43178.8	43486.0	43698.4	43996.1	44205.2	44481.8	44659.8	44864.9	44987.4	45103.9
17.5°	38620.2	38996.2	39538.1	39970.5	40551.0	41023.0	41601.2	42055.5	42580.1	42982.6	43411.0
20°	33030.3	33556.8	34304.9	34940.3	35781.4	36494.7	37408.5	38173.9	39066.9	39811.2	40614.5
22.5°	27014.0	27633.3	28490.6	29256.9	30261.3	31158.5	32303.4	33315.5	34522.6	35604.0	36800.3
25°	21338.3	21945.3	22818.5	23612.1	24696.4	25684.7	26935.5	28096.6	29497.4	30803.6	32303.4
27.5°	16471.1	17010.3	17777.9	18492.2	19485.3	20455.5	21724.9	22963.0	24457.7	25861.6	27477.8
30°	12720.4	13157.7	13772.8	14347.4	15144.6	15938.1	17068.8	18213.9	19701.2	21156.0	22812.9
32.5°	9857.9	10230.8	10744.3	11210.8	11825.0	12423.3	13255.9	14171.0	15475.7	16869.1	18471.3
35°	7631.1	7950.1	8387.1	8789.0	9294.2	9769.1	10390.5	11043.5	12039.2	13211.3	14645.1
37.5°	6083.9	6214.0	6525.9	6855.1	7274.8	7665.0	8151.1	8633.9	9346.3	10271.1	11442.4
40°	4626.7	4833.3	5087.2	5346.4	5664.1	5977.3	6510.4	6767.1	7236.2	7900.1	8809.2
42.5°	3733.2	3878.4	4057.1	4237.4	4458.8	4676.9	4946.6	5221.2	5571.9	6021.5	6668.2
45°	3124.0	3218.7	3333.9	3454.1	3599.4	3748.2	3928.8	4117.4	4355.0	4631.4	5024.1
47.5°	2717.1	2769.4	2844.6	2926.6	3026.3	3129.3	3246.7	3366.9	3514.5	3678.5	3902.1
50°	2399.4	2443.1	2501.5	2556.2	2625.1	2730.7	2777.2	2843.6	2932.4	3028.9	3153.9
52.5°	2169.5	2198.6	2235.2	2266.8	2310.3	2349.8	2401.6	2447.3	2508.8	2566.7	2647.5
55°	1990.5	2001.1	2021.9	2042.2	2072.3	2099.3	2134.8	2164.7	2203.9	2238.6	2289.4
57.5°	1852.3	1853.2	1862.8	1873.4	1892.7	1909.7	1934.2	1953.8	1981.1	2003.1	2033.7
60°	1752.9	1747.7	1749.5	1753.3	1764.2	1775.2	1790.8	1803.7	1820.7	1833.2	1850.3
62.5°	1670.3	1661.9	1660.0	1659.1	1664.5	1668.5	1677.0	1683.2	1693.0	1698.4	1707.5
65°	1565.8	1556.0	1552.2	1547.6	1549.3	1548.0	1551.2	1551.4	1556.3	1557.4	1562.7
67.5°	1471.1	1462.9	1457.9	1451.9	1449.2	1444.8	1442.9	1438.7	1438.1	1434.6	1433.8
70°	1384.7	1376.7	1372.5	1366.9	1364.0	1358.2	1354.8	1347.7	1343.6	1337.0	1333.4
72.5°	1284.7	1280.3	1279.0	1275.1	1274.1	1271.0	1269.6	1264.5	1261.6	1256.0	1252.9
75°	1180.2	1176.6	1176.2	1172.4	1172.1	1168.3	1167.3	1162.0	1159.2	1153.7	1151.3
77.5°	1055.8	1050.3	1048.8	1044.3	1045.4	1043.4	1045.1	1041.1	1039.3	1033.8	1032.0
80°	915.6	908.6	905.7	899.8	901.5	898.7	901.5	901.1	903.1	898.7	897.9
82.5°	749.6	742.0	740.5	736.4	739.1	739.4	745.3	742.1	743.4	739.2	740.9
85°	545.5	539.7	531.7	530.6	525.5	530.8	523.9	528.5	521.0	526.3	519.3
87.5°	338.2	326.4	320.1	311.6	308.4	300.3	296.9	291.0	292.7	290.0	291.6
90°	120.0	110.1	108.0	99.9	99.2	92.1	93.1	88.0	89.8	84.7	86.9
92.5°	24.3	25.2	26.8	29.0	30.3	32.0	33.5	35.7	37.0	39.0	40.3
95°	29.3	30.2	32.4	34.7	36.9	39.1	41.4	43.6	45.8	48.1	50.3
97.5°	36.0	36.4	38.7	40.9	43.1	45.4	47.5	50.1	52.4	54.6	56.8
100°	40.8	41.0	47.3	53.7	60.0	66.5	72.8	79.1	85.7	92.0	98.4
102.5°	71.6	73.1	89.2	105.2	121.2	137.2	153.3	169.6	185.6	201.8	218.0
105°	150.3	156.7	181.1	205.7	230.1	254.6	279.1	303.8	328.4	353.0	377.6
107.5°	273.1	284.6	306.9	329.1	351.1	373.4	395.8	417.9	440.2	462.5	485.1
110°	382.3	394.6	409.6	424.6	439.6	454.5	469.6	484.6	499.9	514.9	530.3



TEST NUMBER: P1444842
 CATALOG NUMBER: EHBR1-54-UNV-TA-L940-UPL12

CANDELA DISTRIBUTION (continued):

	110°	112.5°	115°	117.5°	120°	122.5°	125°	127.5°	130°	132.5°	135°
112.5°	431.7	439.9	448.6	457.7	466.5	475.5	484.5	493.5	502.6	511.8	520.9
115°	431.4	435.5	438.8	442.7	446.4	450.2	454.0	458.0	462.1	466.0	470.0
117.5°	400.0	401.8	402.5	403.6	404.4	405.9	406.8	408.3	409.6	411.0	412.1
120°	353.0	353.0	353.0	353.1	353.1	353.3	353.6	353.8	354.3	354.7	355.0
122.5°	306.0	305.7	305.7	306.0	306.2	306.6	307.1	307.7	308.2	308.7	309.2
125°	265.5	265.4	266.6	268.0	269.4	271.0	272.4	274.3	275.9	277.6	279.3
127.5°	237.1	237.8	239.9	242.1	244.6	247.1	249.5	252.1	254.5	257.3	259.6
130°	221.1	222.4	224.9	227.9	230.6	233.6	236.5	239.6	242.3	245.3	248.2
132.5°	214.3	216.3	218.8	221.6	224.3	227.2	230.3	233.2	236.1	239.2	241.8
135°	213.6	215.8	218.3	221.0	223.6	226.6	229.2	232.2	234.6	237.5	240.0
137.5°	215.9	218.0	220.4	222.7	224.9	227.6	229.8	232.4	234.6	237.0	239.2
140°	221.3	223.4	224.9	226.9	228.6	230.5	232.0	234.1	235.6	237.7	239.2
142.5°	226.3	228.3	229.3	230.8	232.2	233.9	235.2	236.7	237.9	239.2	240.4
145°	232.1	233.7	234.5	235.4	236.3	237.2	237.9	238.9	239.4	240.2	240.8
147.5°	237.2	238.3	238.6	239.4	239.9	240.4	241.0	241.6	241.8	242.4	242.9
150°	240.9	241.9	241.9	242.4	242.5	242.9	242.9	243.3	243.3	243.6	243.7
152.5°	243.9	244.6	244.3	244.7	244.5	244.6	244.4	244.7	244.5	244.6	244.7
155°	245.7	246.0	245.8	245.9	245.7	245.8	245.6	246.0	246.0	246.0	246.1
157.5°	248.7	248.6	248.5	248.5	248.2	248.3	248.3	248.4	248.4	248.9	249.1
160°	252.2	252.1	251.8	251.8	251.7	251.6	251.6	251.9	252.0	252.6	252.8
162.5°	256.0	255.8	255.6	255.6	255.5	255.6	255.7	256.1	256.2	256.7	257.0
165°	261.4	261.5	261.1	261.2	261.1	261.1	261.1	261.3	261.7	262.0	262.4
167.5°	267.3	267.2	267.2	267.3	267.3	267.5	267.7	268.3	268.4	269.1	269.2
170°	273.7	273.9	273.6	273.7	273.7	273.7	273.8	273.9	274.2	274.5	274.5
172.5°	280.4	280.4	280.3	280.1	280.1	280.1	280.0	280.1	280.0	280.0	279.9
175°	285.6	285.5	285.5	285.5	285.4	285.1	285.1	284.7	284.6	284.6	284.5
177.5°	289.6	289.2	289.1	289.1	288.9	288.7	288.7	288.5	288.5	288.5	288.3
180°	290.3	290.3	290.3	290.3	290.3	290.3	290.3	290.3	290.3	290.3	290.3



TEST NUMBER: P1444842
 CATALOG NUMBER: EHBR1-54-UNV-TA-L940-UPL12

CANDELA DISTRIBUTION (continued):

	137.5°	140°	142.5°	145°	147.5°	150°	152.5°	155°	157.5°	160°	162.5°
0°	43163.3	43163.3	43163.3	43163.3	43163.3	43163.3	43163.3	43163.3	43163.3	43163.3	43163.3
2.5°	43008.3	43007.8	43003.6	43005.6	43006.3	43009.4	43013.1	43017.0	43017.7	43020.8	43021.4
5°	43330.2	43223.8	43145.1	43058.5	42993.4	42934.9	42895.9	42864.8	42852.8	42855.9	42863.1
7.5°	44202.9	43983.4	43802.1	43596.1	43424.2	43242.3	43091.5	42948.1	42843.7	42765.8	42722.3
10°	45160.7	44893.2	44637.3	44339.1	44056.2	43754.4	43481.0	43205.7	42976.2	42776.9	42630.4
12.5°	45585.7	45396.7	45175.4	44894.0	44591.4	44243.1	43891.3	43514.3	43163.6	42838.1	42575.6
15°	45135.7	45136.1	45055.4	44920.4	44710.2	44431.9	44096.7	43703.7	43290.0	42867.9	42482.2
17.5°	43707.2	43976.7	44126.6	44221.5	44192.4	44089.8	43876.6	43574.7	43189.0	42739.4	42268.8
20°	41254.1	41889.8	42343.0	42750.6	42979.0	43130.8	43115.6	42992.8	42718.1	42335.8	41845.7
22.5°	37817.6	38884.7	39726.6	40511.7	41062.3	41510.2	41723.1	41813.5	41689.1	41422.7	40962.5
25°	33643.8	35094.5	36332.5	37534.0	38435.3	39209.9	39675.3	40003.3	40029.4	39890.2	39479.6
27.5°	29005.8	30718.2	32285.2	33882.0	35149.4	36262.9	36993.5	37528.3	37698.2	37675.7	37302.9
30°	24373.7	26171.5	27898.7	29760.7	31329.0	32751.6	33716.7	34440.0	34718.6	34772.0	34413.4
32.5°	19999.3	21772.0	23494.4	25441.1	27167.0	28797.4	29937.6	30796.7	31120.7	31197.1	30803.6
35°	16029.1	17664.7	19301.5	21188.1	22904.1	24592.5	25793.9	26693.3	26995.9	27047.0	26591.6
37.5°	12586.3	13979.8	15406.1	17098.9	18674.7	20260.3	21401.9	22247.1	22467.6	22454.0	21938.6
40°	9687.5	10770.8	11916.9	13310.5	14620.6	15961.0	16925.0	17623.8	17739.6	17653.8	17112.3
42.5°	7284.4	8066.9	8897.8	9938.0	10910.1	11913.3	12614.7	13133.4	13149.9	13014.3	12528.2
45°	5426.9	6190.3	6538.8	7167.7	7793.9	8460.9	8889.1	9209.5	9159.9	9040.6	8671.3
47.5°	4137.1	4430.4	4741.6	5131.6	5496.3	6253.3	6197.2	6711.8	6341.2	6593.9	6037.5
50°	3285.3	3449.2	3616.9	3823.8	4014.4	4212.2	4336.0	4428.2	4416.3	4376.6	4270.0
52.5°	2794.9	2845.7	2928.3	3045.9	3152.3	3259.4	3329.7	3387.0	3388.1	3372.1	3318.2
55°	2336.0	2400.3	2459.6	2536.6	2667.7	2687.8	2788.7	2768.3	2776.2	2748.3	2776.9
57.5°	2059.6	2097.0	2130.5	2176.2	2214.1	2258.3	2284.4	2309.5	2307.0	2301.6	2274.1
60°	1863.8	1884.4	1903.0	1929.7	1950.5	1975.5	1987.5	2000.2	1996.1	1986.8	1962.3
62.5°	1712.7	1725.8	1736.3	1753.5	1766.2	1781.8	1787.9	1793.4	1787.9	1779.2	1757.5
65°	1563.9	1572.2	1578.9	1591.8	1600.8	1614.1	1619.4	1624.5	1619.5	1612.7	1596.2
67.5°	1429.5	1430.3	1429.6	1434.9	1437.6	1445.6	1448.1	1451.7	1445.9	1440.0	1426.2
70°	1327.6	1325.5	1322.9	1325.0	1325.5	1329.4	1330.0	1329.4	1322.5	1312.2	1297.0
72.5°	1247.9	1246.8	1244.9	1246.6	1246.6	1250.2	1249.1	1247.3	1238.8	1228.8	1213.8
75°	1145.6	1144.7	1140.9	1141.1	1137.8	1138.9	1134.8	1132.4	1123.0	1114.6	1101.2
77.5°	1025.7	1023.8	1018.2	1016.1	1010.0	1007.5	999.7	995.8	986.2	979.5	968.0
80°	892.0	889.9	882.7	878.7	869.1	863.0	851.5	844.9	833.9	827.4	816.1
82.5°	737.3	738.0	730.9	725.9	712.1	701.6	686.3	678.0	665.8	659.4	647.9
85°	524.3	516.9	520.9	520.5	511.9	502.8	490.3	481.5	471.2	465.2	457.1
87.5°	287.6	289.4	287.3	285.5	279.5	274.8	265.1	259.9	252.5	248.7	242.7
90°	79.5	79.3	72.3	72.3	65.5	62.9	54.9	53.4	46.1	45.0	39.7
92.5°	38.5	36.6	35.0	32.8	31.3	29.4	27.5	25.6	23.8	22.7	22.5
95°	47.6	45.1	42.4	39.7	36.9	34.2	31.7	29.0	26.3	25.7	25.2
97.5°	53.8	50.6	47.4	44.3	41.1	37.9	34.9	31.7	28.5	28.1	27.8
100°	91.2	84.0	76.7	69.3	62.0	54.6	47.4	40.1	32.9	32.5	32.0
102.5°	200.1	182.4	164.7	147.0	129.4	111.5	93.9	76.0	58.3	55.7	53.2
105°	350.7	323.7	297.2	270.4	243.4	216.5	189.9	162.8	135.9	127.4	118.7
107.5°	460.0	434.7	409.7	384.6	359.2	334.3	309.0	283.8	258.4	243.3	228.3
110°	510.4	490.5	470.9	451.0	431.2	411.3	391.4	371.4	351.6	338.6	325.8



TEST NUMBER: P1444842
 CATALOG NUMBER: EHBR1-54-UNV-TA-L940-UPL12

CANDELA DISTRIBUTION (continued):

	137.5°	140°	142.5°	145°	147.5°	150°	152.5°	155°	157.5°	160°	162.5°
112.5°	506.5	492.3	478.1	463.6	449.3	434.8	420.5	406.0	391.5	383.8	376.1
115°	461.8	453.4	445.1	436.8	428.4	420.0	411.6	402.8	394.3	390.5	386.7
117.5°	408.4	404.5	400.8	396.9	392.9	388.8	385.0	380.9	376.8	375.7	374.7
120°	354.8	354.2	353.3	352.7	352.1	351.4	350.6	349.7	348.8	349.6	350.4
122.5°	310.8	312.2	313.8	314.8	316.4	317.5	319.0	319.9	321.1	323.1	324.9
125°	281.6	283.8	286.1	288.3	290.4	292.6	295.0	296.8	299.2	300.8	303.0
127.5°	262.4	264.7	267.3	269.6	272.2	274.6	277.0	279.1	281.5	283.4	285.6
130°	250.7	252.8	255.4	257.5	259.8	262.2	264.4	266.7	268.9	270.8	272.7
132.5°	244.0	246.2	248.6	250.5	252.9	254.9	257.2	259.3	261.8	263.3	265.1
135°	242.1	243.8	245.9	247.5	249.7	251.4	253.3	255.4	257.5	259.0	260.8
137.5°	241.0	242.5	244.4	245.9	247.8	249.3	251.4	252.9	255.2	256.3	258.2
140°	240.7	242.3	244.0	245.6	247.4	248.9	251.1	252.8	254.9	256.2	257.8
142.5°	241.9	243.0	244.5	245.8	247.4	248.7	250.5	252.2	254.1	255.6	256.9
145°	242.3	243.5	245.1	246.3	247.7	249.3	251.4	253.1	255.0	256.3	257.7
147.5°	244.0	245.0	246.4	247.6	249.0	250.1	252.1	253.6	255.5	256.8	257.9
150°	244.9	245.9	247.1	248.2	249.6	251.1	252.8	254.3	256.4	257.6	258.7
152.5°	245.8	246.8	248.0	249.4	250.7	252.3	254.0	255.6	257.4	258.4	259.8
155°	247.4	248.2	249.6	250.9	252.4	253.6	255.3	256.9	258.5	259.7	260.9
157.5°	250.2	251.0	252.4	253.6	254.9	256.2	257.9	259.1	260.7	261.7	262.6
160°	253.9	254.8	256.0	257.2	258.4	259.6	261.0	262.3	263.6	264.6	265.5
162.5°	258.1	259.2	260.3	261.2	262.6	263.8	265.2	266.4	267.7	268.4	269.4
165°	263.3	264.2	265.3	266.1	267.0	267.8	269.1	270.0	271.2	271.8	272.8
167.5°	270.3	270.7	271.5	272.1	273.2	273.8	274.9	275.6	276.5	277.3	278.0
170°	275.2	275.8	276.2	277.0	277.7	278.4	279.0	279.6	280.6	281.2	281.8
172.5°	280.2	280.4	281.1	281.4	281.8	282.1	282.8	283.2	283.6	284.3	284.7
175°	284.9	284.9	285.2	285.3	285.5	285.6	286.1	286.4	286.7	287.0	287.2
177.5°	288.3	288.4	288.4	288.5	288.9	289.0	289.2	289.3	289.6	289.7	290.1
180°	290.3	290.3	290.3	290.3	290.3	290.3	290.3	290.3	290.3	290.3	290.3



TEST NUMBER: P1444842
 CATALOG NUMBER: EHBR1-54-UNV-TA-L940-UPL12

CANDELA DISTRIBUTION (continued):

	165°	167.5°	170°	172.5°	175°	177.5°	180°	182.5°	185°	187.5°	190°
0°	43163.3	43163.3	43163.3	43163.3	43163.3	43163.3	43163.3	43163.3	43163.3	43163.3	43163.3
2.5°	43019.9	43019.5	43018.1	43016.1	43014.3	43015.4	43017.2	43022.2	43030.8	43043.3	43059.6
5°	42869.0	42877.8	42882.7	42883.4	42878.9	42876.2	42880.3	42892.1	42916.0	42956.0	43010.1
7.5°	42710.6	42721.4	42738.1	42750.6	42753.0	42750.0	42750.6	42769.1	42813.1	42891.0	43000.3
10°	42541.5	42509.4	42526.4	42557.4	42582.0	42586.5	42589.5	42611.4	42675.7	42793.5	42969.0
12.5°	42385.4	42283.7	42264.0	42292.0	42329.4	42341.4	42338.1	42347.5	42422.9	42578.6	42823.2
15°	42180.0	41988.5	41923.1	41930.3	41976.5	41993.2	41981.0	41962.4	42035.8	42226.1	42542.7
17.5°	41847.6	41538.8	41418.5	41413.2	41467.4	41481.7	41452.0	41394.4	41466.7	41704.1	42097.2
20°	41342.2	40886.5	40660.0	40623.9	40682.7	40665.6	40606.2	40519.2	40614.3	40902.8	41370.2
22.5°	40433.8	39856.3	39469.4	39344.5	39414.8	39367.9	39281.3	39170.2	39296.4	39624.4	40144.9
25°	38949.3	38282.1	37752.2	37455.0	37511.0	37427.0	37332.8	37198.1	37348.6	37725.0	38298.0
27.5°	36767.3	35996.5	35340.0	34848.0	34866.1	34756.1	34647.5	34473.2	34661.1	35106.6	35752.9
30°	33865.8	32974.0	32174.5	31505.7	31445.9	31339.3	31228.1	30999.3	31234.4	31767.8	32523.0
32.5°	30222.0	29231.9	28308.1	27462.6	27303.1	27198.9	27099.9	26836.6	27144.5	27766.4	28634.0
35°	25960.8	24906.0	23904.4	22938.8	22674.6	22570.4	22483.9	22231.6	22615.9	23292.5	24229.6
37.5°	21283.4	20205.9	19211.6	18221.4	17848.0	17706.8	17643.9	17478.6	17921.9	18591.2	19532.1
40°	16481.7	15479.9	14588.4	13713.7	13288.1	13072.0	13039.0	13008.9	13437.5	14018.2	14872.2
42.5°	11989.8	11181.5	10494.1	9825.6	9439.9	9144.8	9144.6	9234.2	9620.0	10055.0	10713.6
45°	8293.7	7751.3	7313.2	6866.6	6985.9	6397.6	6743.3	6565.9	6756.6	7037.0	7465.3
47.5°	5701.1	5405.0	5164.4	4914.9	4732.9	4559.3	4574.5	4686.5	4866.1	5032.5	5255.3
50°	4155.1	4004.3	3881.8	3752.2	3661.6	3585.1	3589.5	3638.0	3732.4	3820.0	3936.7
52.5°	3255.8	3172.6	3106.1	3034.5	2986.9	2948.8	2950.9	2974.5	3025.5	3075.5	3142.4
55°	2683.6	2673.5	2587.0	2522.7	2498.2	2472.6	2477.2	2486.6	2521.2	2550.6	2594.8
57.5°	2248.8	2210.0	2184.1	2150.1	2134.6	2116.7	2120.7	2124.2	2147.4	2167.1	2199.0
60°	1941.8	1914.3	1896.0	1872.9	1862.6	1851.3	1853.9	1855.9	1870.8	1883.6	1906.5
62.5°	1737.9	1713.3	1697.3	1679.5	1672.3	1664.7	1666.4	1667.0	1676.3	1685.7	1703.0
65°	1581.5	1561.9	1548.7	1533.3	1525.8	1517.7	1518.6	1518.6	1526.4	1533.3	1546.3
67.5°	1416.0	1401.3	1392.7	1380.5	1375.4	1367.3	1367.1	1364.5	1369.6	1372.4	1381.2
70°	1283.2	1268.4	1257.3	1245.7	1239.3	1232.1	1232.2	1232.4	1238.3	1244.6	1256.0
72.5°	1201.2	1187.0	1177.2	1167.0	1160.9	1154.8	1153.7	1153.1	1157.4	1160.7	1168.3
75°	1092.5	1081.3	1075.5	1065.9	1061.1	1054.2	1053.0	1049.9	1051.9	1052.6	1058.2
77.5°	960.8	950.1	945.4	935.7	931.6	923.8	923.2	919.6	921.3	920.1	924.5
80°	810.5	800.8	798.2	790.2	788.4	781.1	780.0	775.7	777.0	773.6	775.2
82.5°	642.9	634.0	632.0	624.7	624.7	618.1	617.8	611.3	611.3	605.7	596.7
85°	452.9	446.4	443.6	437.5	435.7	430.5	427.7	421.5	419.2	415.2	414.0
87.5°	239.0	234.9	231.1	228.3	223.0	213.5	212.8	206.2	206.6	202.1	202.4
90°	39.1	34.4	34.1	29.7	29.1	26.2	25.9	25.2	25.3	25.0	25.2
92.5°	21.9	21.2	20.7	20.0	19.4	18.8	18.2	18.8	19.4	20.0	20.7
95°	24.6	24.0	23.6	23.0	22.5	21.9	21.3	21.9	22.5	23.1	23.7
97.5°	27.5	27.1	26.7	26.4	26.1	25.7	25.3	25.9	26.3	26.6	26.9
100°	31.7	31.2	30.8	30.4	30.0	29.5	29.2	29.8	30.3	30.7	31.1
102.5°	50.8	48.2	45.7	43.0	40.4	37.9	35.3	37.9	40.4	43.1	45.7
105°	109.9	101.5	92.8	84.1	75.4	66.7	58.0	66.9	75.6	84.3	93.1
107.5°	212.9	197.9	182.6	167.5	152.0	136.9	121.6	137.0	152.3	167.7	183.0
110°	312.7	299.5	286.5	273.4	260.3	247.3	234.0	247.4	260.6	273.7	286.9



TEST NUMBER: P1444842
 CATALOG NUMBER: EHBR1-54-UNV-TA-L940-UPL12

CANDELA DISTRIBUTION (continued):

	165°	167.5°	170°	172.5°	175°	177.5°	180°	182.5°	185°	187.5°	190°
112.5°	368.2	360.4	352.5	344.8	336.7	329.0	320.9	329.2	337.3	345.5	353.5
115°	382.8	378.8	375.0	371.1	366.9	362.9	358.6	363.3	367.6	372.0	376.3
117.5°	373.6	372.7	371.4	370.3	369.0	367.9	366.5	368.3	369.9	371.7	373.0
120°	351.0	351.9	352.5	353.0	353.7	354.1	354.4	354.8	354.8	354.8	354.6
122.5°	326.6	328.5	330.0	331.7	333.2	334.7	336.0	335.4	334.6	333.8	332.5
125°	304.6	306.9	308.6	310.4	312.0	313.8	314.9	314.6	313.8	312.8	311.5
127.5°	287.6	289.5	291.1	293.2	294.7	296.2	297.5	297.2	296.4	295.6	294.5
130°	274.4	276.4	277.9	279.7	281.0	282.3	283.2	283.2	282.8	282.5	281.5
132.5°	266.7	268.6	270.2	271.8	272.8	274.2	274.8	275.2	274.9	274.7	274.0
135°	262.4	263.8	265.2	266.9	267.8	269.0	269.5	270.1	270.0	270.0	269.4
137.5°	259.4	261.0	262.2	263.4	264.3	265.1	265.6	266.3	266.4	266.8	266.5
140°	259.1	260.7	262.1	263.1	264.3	265.2	265.6	266.4	266.5	266.6	266.4
142.5°	258.4	259.8	261.2	262.4	263.4	264.3	264.9	265.4	265.6	265.7	265.5
145°	259.0	260.2	261.5	262.7	263.5	264.2	264.5	265.3	265.5	265.8	265.8
147.5°	259.2	260.6	261.4	262.5	263.3	263.9	264.4	265.0	265.3	265.5	265.6
150°	260.2	261.4	262.4	263.5	264.4	265.1	265.3	266.1	266.4	266.5	266.5
152.5°	261.0	262.0	263.0	263.8	264.8	265.3	265.7	266.4	266.9	267.2	267.3
155°	261.9	263.0	263.9	264.9	265.5	266.4	267.0	267.7	268.1	268.4	268.8
157.5°	263.6	264.7	265.5	266.5	267.1	268.0	268.7	269.5	270.0	270.6	270.9
160°	266.4	267.5	268.1	269.1	269.8	270.6	271.3	272.0	272.7	273.2	273.8
162.5°	270.2	271.2	271.7	272.6	273.4	274.2	274.8	275.7	276.3	276.9	277.4
165°	273.6	274.6	275.2	276.1	277.0	277.8	278.4	279.1	279.5	280.1	280.5
167.5°	278.7	279.6	280.1	281.0	281.5	282.4	283.1	283.7	284.1	284.5	284.9
170°	282.4	283.1	283.8	284.3	285.1	285.7	286.1	286.5	287.0	287.4	287.8
172.5°	285.2	285.9	286.5	287.2	287.7	288.3	288.8	289.2	289.5	289.6	289.6
175°	287.6	288.2	288.5	288.9	289.3	289.6	290.2	290.2	290.6	290.6	290.8
177.5°	290.5	291.0	291.4	291.6	292.0	292.2	292.5	292.4	292.4	292.2	292.0
180°	290.3	290.3	290.3	290.3	290.3	290.3	290.3	290.3	290.3	290.3	290.3



TEST NUMBER: P1444842
 CATALOG NUMBER: EHBR1-54-UNV-TA-L940-UPL12

CANDELA DISTRIBUTION (continued):

	192.5°	195°	197.5°	200°	202.5°	205°	207.5°	210°	212.5°	215°	217.5°
0°	43163.3	43163.3	43163.3	43163.3	43163.3	43163.3	43163.3	43163.3	43163.3	43163.3	43163.3
2.5°	43082.7	43104.3	43137.2	43167.1	43212.1	43247.6	43300.9	43341.4	43401.5	43440.6	43506.0
5°	43086.6	43170.9	43281.7	43389.8	43519.9	43637.9	43784.6	43909.6	44057.1	44177.3	44328.2
7.5°	43147.5	43310.0	43504.9	43701.2	43923.2	44130.8	44364.9	44576.6	44808.1	45004.1	45218.1
10°	43192.4	43443.1	43730.2	44019.1	44323.2	44605.8	44891.0	45137.5	45367.9	45557.4	45724.9
12.5°	43131.5	43476.8	43845.3	44201.0	44539.2	44831.6	45077.0	45266.6	45397.4	45486.2	45507.0
15°	42924.4	43340.0	43740.5	44094.8	44375.4	44591.8	44703.8	44756.3	44700.0	44606.5	44401.1
17.5°	42537.4	42975.7	43333.8	43613.3	43761.6	43820.3	43727.5	43566.1	43250.6	42900.5	42394.8
20°	41827.9	42236.3	42496.1	42648.5	42608.9	42462.2	42111.9	41686.0	41056.2	40385.0	39499.3
22.5°	40583.5	40940.5	41079.0	41090.3	40848.3	40480.9	39849.1	39118.7	38125.1	37092.2	35821.9
25°	38715.6	39028.3	39050.2	38927.3	38484.4	37889.2	36961.4	35928.1	34577.9	33201.6	31609.8
27.5°	36182.3	36482.2	36408.8	36179.6	35564.6	34768.2	33580.2	32245.5	30581.0	28955.4	27194.5
30°	32997.8	33318.5	33232.4	32938.3	32206.9	31265.5	29867.7	28317.0	26469.0	24732.7	22948.3
32.5°	29186.9	29592.4	29532.9	29253.4	28490.2	27482.7	25966.1	24321.3	22430.6	20719.6	18983.8
35°	24855.3	25347.7	25373.1	25190.4	24481.9	23486.0	21988.4	20396.4	18585.5	16971.0	15367.5
37.5°	20188.5	20759.3	20876.5	20827.2	20240.0	19361.0	17996.4	16568.3	14963.9	13549.0	12177.6
40°	15495.8	16073.6	16274.1	16333.6	15900.2	15219.4	14099.4	12946.7	11638.9	10492.3	9403.4
42.5°	11216.4	11728.6	11922.3	12044.2	11773.7	11319.7	10502.7	9665.6	8707.4	7880.5	7087.7
45°	7790.0	8152.3	8299.7	8422.4	8275.0	8018.9	7503.0	6979.4	6346.9	5806.6	5294.9
47.5°	5446.4	5646.2	5743.5	5803.0	5745.9	5612.3	5331.6	5028.3	4671.3	4355.4	4051.8
50°	4037.0	4143.3	4194.2	4228.6	4187.0	4112.7	3960.8	3795.7	3599.6	3420.7	3245.9
52.5°	3199.2	3260.2	3290.4	3308.9	3285.1	3239.7	3151.2	3053.3	2935.7	2825.2	2767.2
55°	2695.2	2692.0	2761.9	2728.1	2761.9	2686.5	2670.7	2563.1	2465.4	2396.7	2322.2
57.5°	2222.6	2254.3	2267.7	2282.7	2273.0	2259.2	2221.6	2183.1	2131.6	2088.6	2042.6
60°	1923.9	1950.0	1964.7	1979.7	1978.6	1973.5	1951.8	1928.7	1896.6	1870.8	1843.0
62.5°	1718.2	1740.8	1755.3	1769.6	1770.9	1768.7	1752.3	1736.3	1714.4	1698.2	1679.0
65°	1556.3	1572.2	1582.1	1593.5	1592.8	1589.8	1574.9	1561.6	1543.6	1532.4	1518.3
67.5°	1386.9	1399.0	1406.6	1417.3	1419.4	1420.0	1411.9	1405.7	1396.8	1393.6	1388.8
70°	1266.5	1281.0	1293.3	1306.9	1314.3	1317.8	1314.3	1311.1	1306.0	1303.7	1300.0
72.5°	1175.3	1187.6	1197.2	1209.6	1216.4	1221.4	1218.7	1216.9	1212.4	1211.8	1209.2
75°	1062.1	1070.6	1076.0	1085.2	1088.9	1093.6	1091.4	1092.5	1091.1	1094.7	1094.5
77.5°	925.9	932.1	934.7	941.4	942.1	947.7	949.0	955.5	960.2	970.4	975.8
80°	772.6	776.6	776.6	783.5	786.6	796.0	800.5	811.2	816.1	825.3	826.1
82.5°	600.2	595.6	600.2	597.3	606.1	616.7	618.1	627.3	629.3	635.1	630.6
85°	410.3	410.0	406.3	406.9	404.2	405.5	404.0	405.6	404.1	404.2	400.0
87.5°	196.6	198.3	194.1	195.5	191.4	193.2	189.6	192.5	188.1	188.8	182.3
90°	25.1	25.2	25.2	25.4	26.3	27.0	28.1	29.0	30.7	31.4	32.7
92.5°	21.2	22.1	22.7	23.3	23.9	25.8	27.7	29.6	31.6	33.4	35.2
95°	24.1	24.7	25.2	26.2	26.7	29.4	32.1	34.8	37.5	40.3	43.0
97.5°	27.6	27.9	28.2	28.6	29.2	32.3	35.6	38.8	41.9	45.2	48.2
100°	31.7	32.1	32.5	33.2	33.5	40.9	48.3	55.6	63.0	70.2	77.6
102.5°	48.4	51.1	53.7	56.5	59.1	77.0	94.8	112.6	130.2	148.1	165.8
105°	101.7	110.4	119.5	128.2	136.9	163.9	191.0	218.0	244.7	271.7	298.7
107.5°	198.3	213.6	229.2	244.5	259.7	285.2	310.4	335.8	361.2	386.5	411.5
110°	300.5	313.4	326.9	340.1	353.4	373.2	393.4	413.4	433.4	453.4	473.3



TEST NUMBER: P1444842
 CATALOG NUMBER: EHBR1-54-UNV-TA-L940-UPL12

CANDELA DISTRIBUTION (continued):

	192.5°	195°	197.5°	200°	202.5°	205°	207.5°	210°	212.5°	215°	217.5°
112.5°	361.7	369.6	377.7	385.4	393.5	408.2	423.0	437.5	452.2	466.5	481.0
115°	380.6	384.4	388.8	392.8	397.1	405.7	414.3	423.0	431.7	440.1	448.9
117.5°	374.5	375.9	377.4	378.3	379.7	384.0	388.3	392.5	396.8	401.0	405.2
120°	354.4	353.9	353.7	353.0	352.6	353.5	354.7	355.6	356.7	357.5	358.2
122.5°	331.6	330.0	328.7	327.2	325.8	324.6	323.7	322.4	321.7	320.4	319.4
125°	310.4	308.8	307.4	305.8	304.1	302.2	300.5	298.3	296.4	294.4	292.4
127.5°	293.7	292.1	290.8	289.1	287.5	285.2	283.1	280.8	278.7	276.3	274.2
130°	280.8	279.5	278.5	276.7	275.7	273.3	271.4	269.2	267.1	265.1	262.9
132.5°	273.4	272.3	271.4	269.9	268.8	266.6	265.1	262.7	260.8	258.7	256.9
135°	269.0	268.1	267.5	266.3	265.1	263.2	261.7	259.8	258.2	256.5	254.8
137.5°	266.4	265.4	264.9	264.0	263.2	261.4	260.1	258.3	257.0	255.3	254.0
140°	266.2	265.5	265.0	264.2	263.4	261.8	260.3	258.6	257.2	255.6	254.2
142.5°	265.1	264.7	264.1	263.4	262.6	261.1	260.3	258.9	257.6	256.4	255.2
145°	265.5	265.1	264.9	264.1	263.8	262.4	261.2	259.7	258.8	257.4	256.3
147.5°	265.7	265.2	265.1	264.8	264.6	263.4	262.6	261.4	260.7	259.5	258.7
150°	266.5	266.5	266.3	265.9	265.7	264.7	264.1	263.0	262.4	261.3	260.7
152.5°	267.4	267.5	267.5	267.4	267.5	266.8	266.1	265.2	264.5	263.6	262.9
155°	269.1	269.2	269.3	269.3	269.3	268.8	268.2	267.6	267.0	266.3	265.7
157.5°	271.3	271.6	271.9	272.0	272.2	271.8	271.3	270.7	270.3	269.6	269.2
160°	274.2	274.6	274.9	275.1	275.5	275.1	274.9	274.3	274.1	273.4	272.8
162.5°	277.9	278.4	278.7	278.8	279.1	278.7	278.7	278.3	277.8	277.1	276.6
165°	281.1	281.2	281.6	281.7	281.9	281.6	281.5	281.3	281.0	280.6	280.3
167.5°	285.3	285.4	285.8	285.9	286.1	285.9	286.3	285.8	285.6	285.5	285.3
170°	288.1	288.3	288.5	288.7	288.9	288.7	288.6	288.4	288.5	288.0	287.8
172.5°	289.9	290.0	290.1	290.4	290.4	290.3	290.2	290.1	290.1	290.0	289.8
175°	290.8	290.8	291.0	291.0	291.0	291.0	291.0	291.1	291.0	291.0	291.0
177.5°	292.2	292.2	291.9	291.8	291.8	291.7	291.8	291.8	292.0	291.9	291.8
180°	290.3	290.3	290.3	290.3	290.3	290.3	290.3	290.3	290.3	290.3	290.3



TEST NUMBER: P1444842
 CATALOG NUMBER: EHBR1-54-UNV-TA-L940-UPL12

CANDELA DISTRIBUTION (continued):

	220°	222.5°	225°	227.5°	230°	232.5°	235°	237.5°	240°	242.5°	245°
0°	43163.3	43163.3	43163.3	43163.3	43163.3	43163.3	43163.3	43163.3	43163.3	43163.3	43163.3
2.5°	43546.4	43277.5	43242.0	43260.9	43305.9	43322.5	43371.0	43384.2	43433.0	43445.1	43491.9
5°	44445.0	44089.6	44107.3	44192.7	44322.1	44399.2	44526.4	44592.9	44714.3	44769.6	44879.3
7.5°	45392.5	45113.4	45200.4	45344.5	45521.4	45643.9	45796.7	45896.2	46027.9	46109.7	46215.0
10°	45857.6	45781.2	45877.0	45990.4	46091.4	46170.4	46235.1	46287.0	46321.0	46352.7	46366.7
12.5°	45503.6	45622.0	45638.3	45627.3	45560.4	45509.4	45394.7	45316.8	45178.5	45094.2	44929.5
15°	44191.3	44451.5	44307.4	44089.2	43769.9	43503.7	43127.8	42847.9	42456.4	42190.9	41798.0
17.5°	41888.1	42216.6	41841.0	41336.2	40693.9	40144.4	39460.2	38917.1	38236.8	37742.0	37107.1
20°	38645.7	38952.7	38282.8	37445.9	36452.3	35616.2	34630.1	33843.4	32927.1	32245.5	31422.9
22.5°	34608.5	34827.2	33883.6	32755.3	31489.4	30444.9	29265.9	28322.8	27277.0	26497.8	25620.7
25°	30142.2	30201.2	29069.3	27769.4	26358.7	25184.6	23926.0	22934.3	21867.9	21078.1	20217.3
27.5°	25634.3	25547.8	24324.3	22946.1	21462.0	20241.8	19014.1	18084.9	17150.8	16439.4	15697.9
30°	21379.5	21169.9	19899.6	18482.9	17042.4	15948.7	14929.5	14183.3	13440.2	12875.9	12280.6
32.5°	17477.7	17182.1	15945.5	14618.3	13404.4	12560.4	11804.7	11240.0	10640.0	10163.2	9663.7
35°	14021.7	13706.7	12611.3	11486.1	10567.4	9945.2	9351.3	8888.0	8378.5	7976.4	7542.5
37.5°	11055.7	10797.6	9880.0	8994.6	8299.7	7817.5	7330.8	6952.2	6531.2	6354.3	5890.7
40°	8535.0	8354.5	7637.1	6984.4	6462.5	6236.1	5742.1	5388.4	5073.7	4814.3	4562.9
42.5°	6657.4	6593.5	5895.4	5386.3	5018.9	4733.5	4458.2	4234.7	4017.2	3838.3	3669.4
45°	4885.5	4835.1	4525.0	4231.2	3980.8	3781.4	3595.3	3441.6	3299.3	3181.5	3074.2
47.5°	3804.4	3788.3	3609.7	3427.5	3269.8	3141.6	3020.9	2918.8	2824.4	2745.7	2720.1
50°	3094.3	3092.2	2987.4	2875.0	2762.6	2688.5	2611.5	2551.2	2490.6	2443.3	2393.5
52.5°	2629.1	2617.7	2547.0	2477.6	2410.9	2362.3	2313.0	2274.4	2234.3	2205.2	2174.1
55°	2263.4	2275.4	2234.5	2193.0	2151.3	2121.0	2086.5	2061.1	2033.5	2015.1	1996.4
57.5°	2009.4	2025.2	2003.8	1980.2	1954.8	1934.9	1911.2	1893.6	1875.1	1863.5	1852.6
60°	1824.6	1841.9	1833.2	1821.4	1805.7	1793.9	1778.7	1768.9	1757.1	1750.6	1744.4
62.5°	1667.8	1689.4	1686.4	1680.8	1670.7	1664.1	1655.8	1651.5	1643.7	1640.8	1637.9
65°	1511.4	1535.7	1535.3	1532.5	1526.9	1525.0	1519.9	1518.9	1514.9	1516.5	1516.2
67.5°	1388.3	1409.5	1414.1	1417.5	1417.3	1418.6	1418.2	1420.2	1420.2	1423.3	1425.1
70°	1299.6	1314.3	1317.8	1321.4	1322.3	1325.2	1325.2	1326.9	1326.5	1329.0	1329.4
72.5°	1209.8	1229.2	1232.8	1235.6	1235.6	1238.3	1236.9	1236.4	1232.6	1231.7	1229.0
75°	1098.2	1123.0	1128.4	1131.9	1132.4	1134.8	1131.5	1129.3	1123.0	1120.4	1115.9
77.5°	981.6	1007.3	1011.1	1012.4	1010.4	1010.8	1003.8	999.0	990.8	987.5	983.2
80°	829.7	867.6	870.7	868.3	862.4	861.4	854.5	850.0	840.3	837.0	833.3
82.5°	631.4	675.9	682.2	684.9	680.0	681.1	674.6	672.0	663.1	661.5	655.5
85°	398.7	443.1	450.5	449.3	444.6	443.5	439.6	440.9	440.1	442.4	443.7
87.5°	183.2	226.2	236.6	233.2	232.7	229.7	222.8	225.4	229.6	232.3	232.4
90°	33.7	47.8	48.5	48.9	45.0	44.7	41.2	41.7	38.9	39.2	36.5
92.5°	37.2	39.0	40.9	39.2	37.5	35.9	34.2	32.3	30.8	29.0	27.5
95°	45.7	48.1	50.8	48.5	46.2	44.0	41.7	39.6	37.4	35.1	32.9
97.5°	51.3	54.3	57.3	55.1	52.8	50.4	48.2	46.0	43.8	41.5	39.2
100°	85.0	91.7	98.8	92.5	86.1	79.7	73.4	67.0	60.7	54.3	47.8
102.5°	183.5	200.9	218.5	202.3	186.2	170.0	154.0	137.9	121.9	105.6	89.6
105°	325.3	351.7	378.3	353.5	328.9	304.4	279.8	255.3	230.7	206.0	181.6
107.5°	436.8	460.9	485.7	463.3	441.0	418.8	396.3	374.1	351.7	329.3	307.2
110°	493.2	511.7	531.2	515.9	500.9	485.5	470.5	455.1	440.1	425.2	410.2



TEST NUMBER: P1444842
 CATALOG NUMBER: EHBR1-54-UNV-TA-L940-UPL12

CANDELA DISTRIBUTION (continued):

	220°	222.5°	225°	227.5°	230°	232.5°	235°	237.5°	240°	242.5°	245°
112.5°	495.4	508.0	522.0	512.6	503.6	494.4	485.4	476.2	467.3	458.2	449.4
115°	457.1	463.4	471.3	467.1	463.2	459.1	455.1	451.3	447.3	443.4	439.8
117.5°	409.2	410.6	413.8	412.3	411.1	409.6	408.3	407.0	405.9	404.7	403.6
120°	359.1	357.0	357.0	356.4	356.2	355.5	355.3	354.9	354.7	354.4	354.3
122.5°	318.1	313.7	311.4	310.8	310.3	309.5	309.1	308.6	308.1	307.6	307.4
125°	290.3	284.6	281.5	279.9	278.3	276.5	274.8	273.1	271.7	270.2	268.8
127.5°	271.9	265.8	262.4	260.0	257.5	254.8	252.4	249.8	247.4	244.7	242.6
130°	260.9	254.5	251.4	248.4	245.7	242.5	239.8	236.9	233.9	231.1	228.3
132.5°	254.8	248.3	245.2	242.5	239.9	236.8	234.3	231.1	228.3	225.3	222.8
135°	252.9	246.6	243.8	241.0	238.8	236.0	233.3	230.6	228.1	225.2	222.9
137.5°	252.2	245.8	243.3	240.8	238.9	236.5	234.5	232.1	229.8	227.1	225.2
140°	252.6	245.9	243.3	241.8	240.4	238.6	237.0	235.3	233.7	232.1	230.3
142.5°	253.9	247.2	244.7	243.5	242.6	241.2	240.4	239.1	237.9	236.2	235.1
145°	255.1	247.7	245.3	244.5	244.2	243.4	242.9	242.1	241.6	240.6	240.1
147.5°	257.5	249.9	247.4	247.1	246.8	246.2	246.1	245.5	245.4	244.8	244.6
150°	259.5	250.9	248.0	248.0	247.7	247.7	247.7	247.4	247.6	247.4	247.4
152.5°	261.9	251.5	248.3	248.2	248.5	248.3	248.4	248.6	248.8	248.9	249.0
155°	264.7	253.4	249.8	249.5	249.4	249.5	249.4	249.6	249.7	249.9	250.1
157.5°	268.3	256.3	252.8	252.3	252.1	252.0	251.9	251.9	252.0	252.1	252.5
160°	272.2	260.1	256.5	256.0	255.8	255.6	255.4	255.2	255.3	255.4	255.6
162.5°	276.0	264.1	260.8	260.2	259.6	259.5	259.4	258.9	259.0	258.9	259.1
165°	279.8	269.2	265.9	265.3	265.2	264.9	264.7	264.5	264.5	264.4	264.6
167.5°	284.6	275.2	272.6	272.1	271.7	271.2	271.2	270.5	270.5	270.2	270.2
170°	287.4	280.0	277.7	277.4	277.5	277.3	277.0	277.0	276.9	276.6	276.7
172.5°	289.6	284.2	282.4	282.4	282.6	282.5	282.7	282.6	282.8	282.8	283.0
175°	290.9	287.6	286.9	286.7	286.7	286.8	286.9	286.9	286.9	287.0	287.3
177.5°	292.0	291.0	290.7	290.7	290.7	290.7	290.7	290.7	290.7	290.9	290.9
180°	290.3	290.3	290.3	290.3	290.3	290.3	290.3	290.3	290.3	290.3	290.3



TEST NUMBER: P1444842
 CATALOG NUMBER: EHBR1-54-UNV-TA-L940-UPL12

CANDELA DISTRIBUTION (continued):

	247.5°	250°	252.5°	255°	257.5°	260°	262.5°	265°	267.5°	270°	272.5°
0°	43163.3	43163.3	43163.3	43163.3	43163.3	43163.3	43163.3	43163.3	43163.3	43163.3	43163.3
2.5°	43500.7	43551.4	43547.5	43595.0	43592.5	43637.2	43628.2	43666.7	43657.9	43690.9	43671.5
5°	44927.6	45024.1	45055.9	45142.9	45161.0	45238.9	45240.5	45302.4	45294.9	45343.4	45317.6
7.5°	46277.4	46367.4	46410.2	46477.8	46511.7	46567.6	46589.5	46635.6	46646.7	46673.9	46673.0
10°	46391.3	46391.0	46412.2	46402.7	46421.6	46410.7	46433.7	46425.4	46459.5	46450.6	46476.4
12.5°	44858.5	44706.4	44650.9	44514.2	44484.3	44367.1	44375.4	44300.2	44336.5	44290.3	44369.0
15°	41564.2	41211.3	41037.0	40730.2	40633.9	40391.4	40371.7	40210.7	40254.2	40169.9	40293.0
17.5°	36696.3	36140.7	35835.8	35387.7	35209.9	34866.8	34798.1	34590.8	34622.9	34518.5	34667.3
20°	30892.3	30220.9	29836.3	29318.2	29087.1	28678.2	28569.7	28337.8	28366.8	28262.9	28431.2
22.5°	25022.1	24319.4	23885.2	23342.1	23047.0	22662.4	22547.0	22314.0	22327.3	22229.7	22391.5
25°	19627.6	18953.9	18532.5	18039.2	17783.1	17430.4	17309.2	17100.0	17111.8	17031.3	17176.6
27.5°	15183.4	14630.6	14277.9	13864.5	13634.9	13345.1	13226.9	13050.9	13050.4	12991.3	13112.7
30°	11865.0	11403.7	11087.0	10727.0	10511.4	10249.8	10135.6	9978.2	9971.3	9929.4	10025.9
32.5°	9290.0	8879.7	8591.0	8274.0	8080.4	7856.0	7747.9	7621.4	7609.9	7571.9	7651.1
35°	7221.7	6876.2	6628.0	6361.2	6380.8	6049.6	6104.7	5847.5	5777.7	5762.5	5821.4
37.5°	5581.6	5314.0	5112.3	4912.5	4777.1	4637.2	4561.8	4494.2	4486.4	4479.9	4521.2
40°	4368.9	4181.6	4034.9	3897.8	3804.7	3719.2	3672.1	3635.0	3626.2	3621.2	3646.2
42.5°	3536.0	3409.5	3315.0	3231.3	3174.8	3128.4	3102.5	3081.8	3074.9	3075.1	3089.8
45°	2987.4	2910.7	2849.8	2797.8	2761.7	2777.5	2730.8	2755.3	2723.0	2756.5	2734.4
47.5°	2630.9	2565.6	2527.8	2491.0	2469.1	2451.5	2452.2	2452.5	2459.4	2460.5	2467.6
50°	2355.7	2317.9	2291.7	2268.2	2256.8	2247.6	2250.8	2253.2	2259.9	2260.4	2265.7
52.5°	2152.1	2127.2	2111.4	2096.9	2091.7	2086.5	2088.7	2087.7	2090.8	2089.2	2093.5
55°	1986.4	1974.6	1969.7	1964.3	1965.0	1963.6	1964.6	1959.3	1956.1	1952.1	1955.8
57.5°	1850.3	1848.8	1852.1	1854.3	1860.6	1862.8	1864.3	1858.2	1852.4	1847.2	1850.2
60°	1745.5	1748.1	1756.4	1763.1	1772.2	1776.3	1778.9	1775.3	1771.2	1766.9	1769.4
62.5°	1642.2	1646.2	1656.2	1663.6	1674.5	1680.1	1686.4	1686.7	1688.3	1686.7	1688.4
65°	1522.2	1527.2	1536.2	1542.4	1552.5	1557.4	1563.9	1565.0	1568.5	1567.7	1570.8
67.5°	1431.1	1435.6	1443.1	1449.0	1457.9	1463.1	1468.6	1469.0	1470.2	1470.0	1472.8
70°	1333.8	1336.1	1342.8	1347.7	1356.7	1362.0	1368.4	1370.3	1374.3	1374.9	1378.1
72.5°	1230.1	1229.2	1233.2	1235.5	1242.2	1246.4	1254.5	1258.9	1265.6	1267.4	1269.8
75°	1117.2	1116.3	1121.0	1123.0	1128.8	1132.9	1142.0	1148.0	1158.3	1162.7	1161.6
77.5°	986.5	988.8	997.7	1002.6	1010.4	1015.7	1027.5	1036.9	1055.9	1064.3	1055.8
80°	840.3	842.7	852.0	856.6	866.7	873.1	886.4	897.5	914.5	918.2	913.4
82.5°	660.6	661.3	669.7	673.1	686.3	695.7	712.5	721.3	731.9	730.2	729.0
85°	450.5	456.5	466.9	477.4	493.3	508.7	524.5	537.7	528.3	543.0	526.7
87.5°	240.7	240.1	254.2	251.9	274.4	287.3	301.0	307.6	315.0	313.5	313.7
90°	37.5	35.2	36.5	34.0	36.4	33.5	37.0	34.6	38.8	35.3	41.3
92.5°	25.6	24.9	23.9	23.1	22.0	21.3	20.2	19.3	18.4	17.5	18.4
95°	30.7	29.8	29.0	27.9	27.1	26.4	25.5	24.7	23.9	23.0	24.0
97.5°	37.0	36.5	36.1	35.5	35.0	34.6	34.1	33.5	32.9	32.4	33.1
100°	41.5	41.5	41.5	41.5	41.2	41.2	41.2	41.2	41.2	41.2	41.7
102.5°	73.4	71.8	70.2	68.5	66.9	65.2	63.6	62.0	60.5	58.9	61.2
105°	157.0	150.7	144.4	138.1	131.6	125.4	119.2	112.8	106.6	100.3	106.8
107.5°	285.1	273.6	262.0	250.6	239.1	227.6	216.2	204.9	193.4	182.0	192.3
110°	395.1	382.9	370.6	358.5	346.2	334.0	321.9	309.8	297.7	285.5	295.2



TEST NUMBER: P1444842
 CATALOG NUMBER: EHBR1-54-UNV-TA-L940-UPL12

CANDELA DISTRIBUTION (continued):

	247.5°	250°	252.5°	255°	257.5°	260°	262.5°	265°	267.5°	270°	272.5°
112.5°	440.6	432.2	424.4	416.4	408.3	400.6	392.7	384.9	377.1	369.3	374.1
115°	435.9	432.0	428.1	424.2	420.4	416.4	412.5	408.8	405.2	401.4	401.7
117.5°	402.6	400.9	399.5	397.9	396.4	395.1	393.8	392.6	391.3	390.3	387.7
120°	354.3	354.1	353.9	354.2	354.3	354.7	354.7	355.2	355.7	356.2	352.6
122.5°	307.2	307.3	307.7	308.4	308.9	309.7	310.3	311.4	312.5	313.5	310.0
125°	267.2	267.4	267.7	268.1	268.3	269.2	269.9	271.0	271.9	273.1	270.1
127.5°	240.3	239.8	239.2	239.1	238.7	238.9	239.0	239.4	239.9	240.5	238.6
130°	225.5	224.2	223.0	222.1	221.1	220.5	220.1	219.6	219.3	219.3	218.8
132.5°	219.8	218.1	216.4	214.9	213.5	212.5	211.3	210.7	210.1	209.6	209.5
135°	220.0	218.0	216.0	214.2	212.4	211.4	209.9	209.1	208.0	207.4	207.9
137.5°	222.8	221.0	218.9	217.3	215.5	214.3	212.8	211.9	211.0	210.3	210.9
140°	228.7	226.8	224.8	223.1	221.6	220.3	219.0	218.2	217.0	216.7	217.0
142.5°	233.7	232.4	230.5	229.0	227.5	226.4	225.4	224.5	223.4	223.1	223.6
145°	239.2	238.0	236.6	235.4	234.4	233.7	232.5	232.2	231.6	231.5	231.8
147.5°	243.9	243.3	241.9	241.3	240.2	239.8	239.1	238.8	238.3	238.3	238.4
150°	247.2	246.7	246.0	245.5	244.9	244.7	244.2	244.1	243.8	243.8	243.9
152.5°	249.1	248.8	248.3	248.0	247.5	247.4	247.2	247.2	247.1	247.2	247.2
155°	250.3	250.1	250.1	250.0	249.9	250.1	250.1	250.4	250.4	250.7	250.9
157.5°	252.6	252.8	252.8	253.1	253.2	253.6	253.6	254.2	254.3	254.9	255.2
160°	255.9	256.2	256.2	256.6	256.7	256.9	257.2	257.6	257.9	258.3	258.7
162.5°	259.2	259.6	259.8	260.1	260.7	261.0	261.4	262.1	262.4	263.0	263.6
165°	264.7	264.8	264.9	265.0	265.4	265.6	265.8	266.5	266.7	267.3	267.8
167.5°	270.1	270.3	270.3	270.4	270.6	271.0	271.3	271.8	272.2	273.0	273.3
170°	276.4	276.4	276.4	276.4	276.4	276.8	276.9	277.1	277.3	277.7	278.0
172.5°	283.0	283.0	282.7	283.0	282.7	283.0	283.0	283.1	283.1	283.3	283.4
175°	287.1	287.5	287.6	287.8	287.7	287.8	287.9	287.9	288.0	288.3	288.3
177.5°	290.9	291.0	291.0	291.0	291.0	291.1	291.1	291.1	291.1	291.0	291.0
180°	290.3	290.3	290.3	290.3	290.3	290.3	290.3	290.3	290.3	290.3	290.3



TEST NUMBER: P1444842
 CATALOG NUMBER: EHBR1-54-UNV-TA-L940-UPL12

CANDELA DISTRIBUTION (continued):

	275°	277.5°	280°	282.5°	285°	287.5°	290°	292.5°	295°	297.5°	300°
0°	43163.3	43163.3	43163.3	43163.3	43163.3	43163.3	43163.3	43163.3	43163.3	43163.3	43163.3
2.5°	43703.7	43681.8	43704.1	43681.4	43704.1	43676.9	43695.4	43665.9	43673.5	43642.9	43650.8
5°	45356.1	45321.3	45339.8	45294.6	45299.4	45238.9	45237.8	45167.4	45148.8	45068.7	45033.5
7.5°	46692.4	46681.0	46687.5	46658.3	46654.9	46613.7	46594.0	46535.8	46499.2	46425.4	46375.0
10°	46480.9	46515.0	46523.8	46558.5	46565.7	46600.1	46607.2	46641.6	46648.9	46674.3	46674.6
12.5°	44365.3	44481.0	44508.6	44651.5	44711.6	44875.1	44962.8	45142.9	45249.9	45429.6	45540.0
15°	40289.7	40489.8	40569.6	40848.6	41002.9	41328.6	41533.2	41907.3	42171.2	42568.4	42851.7
17.5°	34680.3	34960.0	35086.2	35464.5	35711.4	36192.0	36538.6	37108.8	37545.4	38179.2	38681.5
20°	28460.0	28770.8	28942.1	29373.8	29665.0	30226.7	30659.2	31360.0	31944.4	32747.4	33434.2
22.5°	22442.3	22738.1	22928.3	23367.3	23695.3	24281.1	24764.5	25504.3	26159.0	27063.9	27887.3
25°	17231.4	17502.5	17674.4	18071.6	18379.6	18917.9	19379.5	20090.9	20731.6	21639.2	22483.6
27.5°	13173.3	13400.2	13566.0	13904.6	14176.2	14632.8	15029.3	15617.3	16169.3	16954.6	17706.4
30°	10085.2	10286.5	10447.7	10742.7	10994.4	11390.2	11738.9	12232.8	12689.7	13314.5	13912.6
32.5°	7706.8	7880.0	8023.7	8281.9	8510.3	8866.8	9180.9	9613.7	10005.9	10535.8	11027.9
35°	5876.1	6217.1	6192.8	6548.9	6606.2	6862.0	7142.3	7520.7	7868.0	8318.7	8737.4
37.5°	4560.9	4656.6	4759.4	4916.8	5082.2	5314.9	5551.7	6014.1	6183.7	6524.3	6871.0
40°	3677.9	3742.6	3810.4	3916.8	4032.6	4196.6	4369.0	4589.7	4815.7	5091.8	5373.8
42.5°	3109.3	3146.0	3189.1	3251.7	3323.0	3427.0	3542.3	3691.9	3849.2	4043.5	4241.9
45°	2778.0	2760.6	2773.4	2807.0	2850.0	2913.2	2985.9	3078.6	3181.0	3306.9	3440.9
47.5°	2469.1	2476.1	2479.9	2498.2	2521.2	2563.6	2607.8	2670.7	2792.0	2829.0	2902.2
50°	2265.1	2268.6	2267.3	2276.7	2288.3	2315.9	2344.5	2387.1	2429.6	2485.9	2539.7
52.5°	2094.2	2098.9	2098.3	2104.4	2110.6	2128.1	2146.1	2176.2	2204.1	2239.9	2270.8
55°	1959.2	1965.7	1968.3	1973.4	1976.4	1985.5	1992.7	2007.1	2019.0	2039.3	2058.0
57.5°	1855.3	1864.3	1868.4	1870.2	1866.6	1866.0	1863.7	1866.6	1869.1	1880.0	1890.5
60°	1773.6	1780.7	1781.9	1780.7	1774.0	1769.3	1761.6	1759.1	1757.9	1763.1	1768.9
62.5°	1688.0	1690.6	1688.8	1686.7	1679.0	1674.4	1666.4	1663.5	1660.8	1664.5	1667.6
65°	1569.6	1571.9	1569.6	1568.3	1561.4	1557.8	1551.1	1548.8	1544.9	1546.0	1545.3
67.5°	1473.5	1475.7	1474.0	1472.2	1467.4	1465.1	1460.2	1457.0	1452.3	1450.6	1447.4
70°	1377.6	1379.4	1376.7	1374.9	1369.5	1367.4	1362.8	1361.8	1358.2	1357.3	1353.7
72.5°	1267.4	1267.6	1263.8	1262.7	1258.7	1258.5	1256.5	1258.3	1258.2	1260.1	1259.3
75°	1154.7	1153.1	1148.3	1147.4	1144.4	1145.8	1143.8	1146.5	1146.9	1151.0	1151.4
77.5°	1041.7	1035.8	1026.7	1022.4	1016.2	1015.5	1012.0	1014.4	1013.5	1018.4	1020.2
80°	899.0	891.9	880.1	874.5	867.4	866.2	863.0	866.2	864.7	870.3	874.3
82.5°	717.7	711.5	699.4	694.9	686.6	687.4	683.8	687.4	686.9	695.2	700.0
85°	530.9	526.8	514.3	503.3	491.0	483.7	476.7	475.4	473.4	476.7	479.6
87.5°	306.7	302.8	293.1	286.7	265.1	266.0	257.5	257.0	255.0	253.0	257.5
90°	38.9	43.8	41.7	46.1	44.8	49.9	49.0	53.8	51.9	56.4	55.2
92.5°	19.3	20.2	21.1	22.0	22.9	23.9	24.7	25.6	27.6	29.2	31.5
95°	25.1	26.2	27.2	28.2	29.3	30.4	31.4	32.4	35.3	38.1	41.0
97.5°	34.0	34.5	35.2	35.9	36.6	37.3	38.0	38.7	41.9	45.0	48.1
100°	42.3	42.9	43.4	44.0	44.5	45.1	45.7	46.2	52.4	58.3	64.2
102.5°	63.6	66.0	68.3	70.7	73.2	75.6	78.0	80.3	94.1	107.6	121.2
105°	113.3	119.7	126.4	132.9	139.4	145.8	152.4	158.8	180.7	202.4	224.3
107.5°	202.4	212.7	222.9	233.3	243.5	254.0	264.1	274.5	295.8	317.2	338.5
110°	305.0	314.9	324.7	334.6	344.3	354.2	364.1	374.1	387.1	400.0	412.9



TEST NUMBER: P1444842
 CATALOG NUMBER: EHBR1-54-UNV-TA-L940-UPL12

CANDELA DISTRIBUTION (continued):

	275°	277.5°	280°	282.5°	285°	287.5°	290°	292.5°	295°	297.5°	300°
112.5°	378.9	383.6	388.5	393.4	398.3	403.3	408.2	413.3	420.0	426.6	433.4
115°	402.2	402.5	403.0	403.4	404.0	404.4	405.4	405.9	408.4	410.8	413.4
117.5°	385.0	382.6	380.2	377.8	375.5	373.4	371.3	369.2	369.3	369.4	369.9
120°	349.6	346.1	342.9	339.5	336.5	333.5	330.7	328.0	327.0	326.0	325.1
122.5°	306.8	303.5	300.5	297.3	294.4	291.7	289.1	286.5	286.1	285.9	285.6
125°	267.5	265.0	262.4	260.0	258.0	255.9	254.1	252.2	253.1	254.0	255.2
127.5°	237.3	235.9	234.7	233.5	232.7	231.8	231.2	230.5	232.4	234.4	236.4
130°	218.4	218.1	218.1	217.9	218.4	218.6	219.0	219.4	222.1	224.3	227.0
132.5°	210.1	210.5	211.1	211.8	212.8	213.8	215.1	216.1	218.9	221.5	224.2
135°	208.4	209.2	210.4	211.3	212.9	214.1	215.7	217.1	220.0	222.3	225.2
137.5°	211.9	212.7	213.9	215.1	216.7	218.0	219.9	221.4	223.7	225.9	228.3
140°	217.9	218.6	219.8	220.9	222.1	223.4	225.2	226.5	228.7	230.4	232.3
142.5°	224.5	225.0	226.1	227.1	228.4	229.6	231.0	232.1	233.8	235.1	237.2
145°	232.4	233.0	234.0	234.7	235.8	236.8	237.9	239.0	240.3	241.4	242.7
147.5°	239.1	239.5	240.4	241.2	242.1	243.0	243.7	244.6	245.8	246.6	247.6
150°	244.5	244.9	245.5	245.9	246.7	247.5	248.4	248.9	249.9	250.6	251.5
152.5°	247.9	248.2	248.7	249.1	249.9	250.5	251.1	251.7	252.7	253.2	254.1
155°	251.4	252.0	252.7	253.1	254.0	254.2	255.1	255.6	256.4	256.9	257.8
157.5°	255.8	256.1	256.9	257.3	258.1	258.5	259.2	259.6	260.5	261.0	261.6
160°	259.4	260.0	260.6	261.3	262.1	262.5	263.3	264.0	264.7	265.1	265.8
162.5°	264.1	264.8	265.4	265.9	266.5	267.2	267.7	268.3	269.2	269.6	270.5
165°	268.6	269.1	269.9	270.4	271.2	271.9	272.4	273.2	273.6	274.3	274.7
167.5°	274.0	274.4	275.3	275.8	276.5	277.1	277.7	278.3	278.9	279.2	279.9
170°	278.6	279.0	279.6	280.1	280.7	281.1	281.8	282.2	282.9	283.3	284.0
172.5°	283.8	284.2	284.5	284.8	285.2	285.7	286.1	286.4	286.9	287.3	287.7
175°	288.3	288.3	288.4	288.6	288.7	288.7	288.9	289.2	289.4	289.6	289.7
177.5°	291.1	291.1	291.2	291.3	291.4	291.4	291.5	291.6	291.6	291.6	291.6
180°	290.3	290.3	290.3	290.3	290.3	290.3	290.3	290.3	290.3	290.3	290.3



TEST NUMBER: P1444842
 CATALOG NUMBER: EHBR1-54-UNV-TA-L940-UPL12

CANDELA DISTRIBUTION (continued):

	302.5°	305°	307.5°	310°	312.5°	315°	317.5°	320°	322.5°	325°	327.5°
0°	43163.3	43163.3	43163.3	43163.3	43163.3	43163.3	43163.3	43163.3	43163.3	43163.3	43163.3
2.5°	43620.2	43622.1	43586.9	43585.0	43552.0	43547.9	43515.8	43506.0	43479.9	43470.5	43443.9
5°	44943.6	44900.8	44801.7	44743.5	44645.6	44580.8	44474.9	44405.8	44303.6	44226.4	44123.6
7.5°	46282.1	46215.5	46104.3	46014.3	45878.4	45770.0	45611.1	45481.0	45308.8	45159.8	44979.1
10°	46674.6	46664.4	46636.0	46594.8	46531.6	46460.6	46352.4	46239.7	46088.8	45925.0	45724.0
12.5°	45708.8	45813.0	45955.3	46039.6	46142.1	46187.1	46229.1	46218.6	46190.9	46108.0	45991.9
15°	43262.0	43555.1	43943.2	44243.9	44590.0	44841.4	45119.1	45292.1	45464.8	45544.4	45593.2
17.5°	39369.9	39924.7	40620.6	41197.3	41862.7	42397.0	42982.9	43423.9	43877.4	44202.3	44496.1
20°	34370.4	35174.4	36158.5	37027.9	38038.9	38917.4	39880.1	40670.5	41485.5	42122.9	42726.1
22.5°	28947.5	29902.4	31092.3	32194.4	33497.7	34669.0	35990.5	37140.7	38341.6	39344.9	40314.9
25°	23615.2	24662.3	25963.4	27193.1	28669.1	30031.5	31598.7	33032.2	34584.4	35932.0	37263.2
27.5°	18745.9	19774.0	21102.2	22411.3	23972.1	25423.8	27103.0	28682.3	30449.6	32079.4	33746.6
30°	14743.9	15615.8	16806.8	18074.7	19614.0	21091.3	22788.8	24413.1	26251.6	28031.1	29909.0
32.5°	11681.1	12345.4	13281.7	14353.8	15774.2	17180.5	18796.8	20364.7	22175.3	23972.8	25925.9
35°	9276.9	9795.0	10509.0	11345.6	12548.4	13760.7	15190.3	16616.3	18305.3	20011.1	21909.4
37.5°	7315.4	7735.7	8294.8	8923.4	9888.1	10882.9	12055.2	13237.4	14705.1	16217.2	17937.6
40°	5712.5	6052.9	6488.2	6956.9	7685.3	8451.9	9358.5	10275.2	11454.4	12690.1	14114.1
42.5°	4487.6	4738.7	5046.2	5388.7	6068.4	6475.4	7090.1	7753.2	8620.1	9517.1	10587.7
45°	3603.9	3775.2	3988.5	4218.2	4533.7	4878.8	5299.9	5741.5	6564.9	6968.9	7619.9
47.5°	3009.7	3124.6	3260.3	3405.1	3591.1	3791.9	4041.6	4296.9	4627.1	4969.3	5370.5
50°	2609.4	2726.4	2772.9	2847.9	2955.6	3070.2	3211.0	3351.8	3528.9	3708.4	3914.9
52.5°	2312.3	2350.4	2401.1	2448.8	2515.5	2646.1	2688.3	2761.9	2861.2	2958.3	3066.8
55°	2085.5	2110.3	2143.3	2172.0	2212.4	2250.9	2306.6	2355.6	2421.7	2480.3	2552.3
57.5°	1908.9	1924.8	1947.6	1966.5	1992.6	2014.3	2046.9	2073.5	2111.6	2144.7	2188.3
60°	1780.7	1791.2	1806.6	1818.9	1835.4	1846.8	1863.0	1875.5	1895.6	1912.4	1936.7
62.5°	1675.8	1681.2	1691.3	1698.6	1709.1	1714.9	1723.5	1728.9	1739.9	1748.4	1762.0
65°	1550.1	1551.4	1558.1	1561.2	1569.5	1572.5	1579.5	1582.1	1591.3	1597.4	1609.4
67.5°	1447.0	1444.2	1444.3	1442.0	1443.1	1440.7	1441.3	1438.7	1442.5	1444.3	1453.5
70°	1353.0	1349.0	1347.7	1343.4	1342.1	1337.7	1336.4	1332.3	1331.9	1330.6	1333.8
72.5°	1261.4	1260.2	1260.5	1257.5	1257.2	1254.2	1254.3	1252.4	1254.5	1255.4	1259.6
75°	1155.9	1156.3	1158.3	1155.6	1156.5	1153.8	1154.8	1152.4	1153.7	1153.2	1157.4
77.5°	1027.6	1030.7	1036.3	1035.2	1036.9	1034.0	1035.3	1032.0	1032.9	1030.7	1032.3
80°	883.4	889.7	897.3	897.0	900.2	898.1	900.9	897.7	899.0	895.2	894.2
82.5°	712.1	717.5	725.5	725.8	732.8	734.1	742.0	741.6	746.5	743.4	741.1
85°	486.8	490.4	497.5	501.3	508.6	513.1	520.5	523.6	518.2	528.1	520.2
87.5°	254.2	263.7	258.3	270.6	267.8	280.2	277.5	289.1	286.9	296.7	295.4
90°	61.5	61.1	67.6	67.7	75.8	77.0	83.4	81.9	88.0	86.8	93.0
92.5°	33.1	35.4	37.4	39.3	41.3	43.4	41.5	39.6	37.8	36.1	34.2
95°	43.8	46.7	49.5	52.4	55.2	58.0	55.0	52.1	49.0	45.9	42.9
97.5°	51.1	54.1	57.2	60.3	63.4	66.5	62.9	59.3	55.6	52.2	48.6
100°	70.2	76.2	82.2	88.0	94.2	100.1	93.4	86.6	80.1	73.3	66.6
102.5°	135.0	148.6	162.3	176.1	189.6	203.3	189.1	175.1	160.8	146.6	132.3
105°	246.2	268.1	290.0	311.7	333.6	355.8	332.8	309.8	286.6	263.7	240.6
107.5°	360.0	381.2	402.9	424.1	445.6	467.2	443.9	420.5	397.4	374.1	350.8
110°	426.1	439.0	452.1	465.3	478.3	491.6	474.7	457.9	441.0	424.1	407.0



TEST NUMBER: P1444842
 CATALOG NUMBER: EHBR1-54-UNV-TA-L940-UPL12

CANDELA DISTRIBUTION (continued):

	302.5°	305°	307.5°	310°	312.5°	315°	317.5°	320°	322.5°	325°	327.5°
112.5°	440.1	447.1	453.7	460.8	467.6	474.4	462.6	450.7	438.7	427.0	415.0
115°	416.1	418.6	421.2	424.0	426.5	429.1	421.4	413.6	405.8	398.1	389.9
117.5°	370.0	370.7	370.8	371.5	371.6	372.0	367.9	364.0	359.8	355.7	351.5
120°	324.2	323.5	322.6	321.8	320.8	319.7	318.6	317.4	315.9	314.5	312.9
122.5°	285.3	285.4	285.0	284.7	284.3	284.0	284.0	284.1	284.0	283.9	283.6
125°	256.1	257.1	258.1	259.1	259.9	260.9	261.1	261.6	262.0	262.4	262.6
127.5°	238.1	240.1	241.9	243.6	245.2	247.1	247.6	248.6	249.2	250.0	250.5
130°	229.4	232.1	234.4	236.5	238.7	241.3	241.8	242.6	243.2	243.8	244.5
132.5°	226.9	229.5	232.0	234.8	237.0	239.5	240.1	240.9	241.2	242.1	242.7
135°	227.6	230.1	232.4	235.1	237.2	239.6	240.1	240.6	241.1	241.9	242.3
137.5°	230.2	232.5	234.5	236.6	238.4	240.6	240.8	241.6	241.9	242.6	243.1
140°	234.0	235.9	237.6	239.4	241.0	242.8	243.1	243.4	243.7	244.1	244.3
142.5°	238.5	240.1	241.3	243.1	244.2	245.8	245.6	245.7	245.9	246.0	246.0
145°	243.8	245.2	246.2	247.4	248.1	249.4	249.1	249.1	248.7	248.8	248.6
147.5°	248.5	249.6	250.1	251.1	251.5	252.6	252.2	252.0	251.8	251.5	251.1
150°	252.1	253.1	253.8	254.3	255.0	255.8	255.4	255.0	254.4	254.1	253.7
152.5°	254.7	255.5	256.1	256.6	257.1	257.7	257.1	257.0	256.3	255.7	255.3
155°	258.1	258.9	259.2	259.8	260.0	260.5	259.8	259.7	259.3	258.8	258.3
157.5°	262.1	262.7	263.2	263.5	263.8	264.3	264.0	263.7	263.3	263.2	262.6
160°	266.3	266.7	267.2	267.6	268.0	268.2	267.8	268.0	267.7	267.3	266.8
162.5°	270.8	271.6	271.9	272.3	272.9	273.3	273.0	272.9	272.4	272.1	271.7
165°	275.3	275.8	276.2	276.7	276.9	277.4	277.2	277.1	276.8	276.8	276.4
167.5°	280.2	280.9	281.2	281.6	281.8	282.1	281.9	282.1	281.7	281.5	281.3
170°	284.2	284.6	285.3	285.5	285.8	286.0	286.1	286.0	285.7	285.5	285.3
172.5°	288.1	288.5	288.6	288.9	289.0	289.4	289.3	289.0	288.9	288.6	288.3
175°	289.7	289.8	290.2	290.2	290.2	290.4	290.2	290.0	289.7	289.6	289.4
177.5°	291.6	291.6	291.6	291.5	291.5	291.5	291.4	291.2	291.1	291.0	290.7
180°	290.3	290.3	290.3	290.3	290.3	290.3	290.3	290.3	290.3	290.3	290.3



TEST NUMBER: P1444842
 CATALOG NUMBER: EHBR1-54-UNV-TA-L940-UPL12

CANDELA DISTRIBUTION (continued):

	330°	332.5°	335°	337.5°	340°	342.5°	345°	347.5°	350°	352.5°	355°
0°	43163.3	43163.3	43163.3	43163.3	43163.3	43163.3	43163.3	43163.3	43163.3	43163.3	43163.3
2.5°	43434.4	43415.6	43403.4	43387.9	43378.4	43366.5	43357.7	43350.1	43344.1	43338.5	43334.3
5°	44045.2	43948.1	43872.8	43791.2	43724.2	43657.3	43605.8	43563.1	43533.7	43511.6	43498.4
7.5°	44822.9	44645.1	44487.1	44320.7	44171.6	44024.9	43898.5	43789.6	43707.9	43654.9	43622.7
10°	45517.2	45279.4	45044.0	44796.4	44561.6	44333.8	44123.6	43938.6	43792.3	43695.0	43638.3
12.5°	45828.6	45625.9	45385.6	45116.7	44828.9	44537.8	44254.0	43998.0	43783.1	43639.0	43555.9
15°	45554.4	45471.2	45308.2	45099.4	44826.3	44525.3	44192.0	43878.8	43590.8	43403.9	43295.6
17.5°	44662.5	44778.7	44766.2	44686.4	44490.1	44236.7	43897.1	43545.3	43184.9	42935.2	42798.8
20°	43157.5	43522.6	43707.9	43802.9	43725.8	43561.5	43254.0	42897.0	42476.9	42150.9	41951.9
22.5°	41042.6	41687.1	42088.8	42382.7	42445.0	42389.0	42117.6	41778.0	41309.7	40917.9	40623.9
25°	38320.0	39264.2	39899.0	40396.6	40589.9	40639.8	40408.8	40071.1	39549.2	39092.6	38689.0
27.5°	35113.1	36340.0	37187.6	37856.2	38158.1	38289.0	38076.4	37731.7	37114.2	36569.2	36042.0
30°	31502.8	32958.5	33978.9	34780.7	35148.6	35321.5	35095.6	34711.1	33992.5	33336.6	32672.4
32.5°	27638.6	29231.5	30343.4	31214.1	31578.7	31741.4	31445.9	31014.0	30183.5	29410.8	28636.3
35°	23592.8	25200.6	26322.0	27169.5	27475.1	27573.1	27195.3	26696.0	25775.8	24927.9	24083.2
37.5°	19464.6	20960.5	21979.7	22740.4	22929.4	22946.3	22491.0	21939.7	20972.5	20136.3	19295.6
40°	15372.2	16633.7	17456.5	18065.4	18130.9	18072.4	17577.5	17022.6	16117.7	15368.6	14630.6
42.5°	11517.3	12469.5	13056.6	13473.8	13449.0	13333.3	12879.5	12402.5	11656.1	11085.5	10504.7
45°	8214.7	8842.5	9185.8	9430.0	9351.6	9241.4	8888.2	8553.8	8046.5	7678.0	7287.7
47.5°	5706.9	6456.7	6326.2	6803.4	6392.2	6663.8	6098.2	5786.4	5517.1	5321.4	5100.8
50°	4085.6	4257.4	4340.4	4397.1	4367.0	4325.3	4223.6	4132.8	4009.8	3920.2	3815.7
52.5°	3155.2	3241.1	3288.1	3322.2	3315.5	3300.4	3256.0	3215.5	3157.9	3120.0	3074.2
55°	2672.6	2673.9	2760.4	2723.3	2778.2	2713.9	2739.1	2668.0	2679.5	2618.4	2577.2
57.5°	2220.9	2256.1	2271.9	2287.2	2282.9	2280.2	2263.1	2254.4	2235.1	2229.1	2215.4
60°	1953.6	1971.9	1975.7	1982.8	1976.9	1974.6	1961.2	1956.5	1943.4	1941.1	1932.0
62.5°	1770.2	1779.6	1779.6	1779.6	1772.0	1764.6	1749.7	1741.9	1730.9	1728.5	1723.2
65°	1617.2	1627.0	1628.6	1630.8	1625.2	1619.4	1606.3	1597.8	1586.4	1582.1	1576.0
67.5°	1459.4	1469.8	1473.3	1478.6	1475.4	1474.2	1465.3	1461.9	1454.4	1452.7	1447.0
70°	1335.4	1339.7	1339.4	1339.2	1332.3	1326.0	1315.6	1310.6	1302.8	1301.2	1296.1
72.5°	1261.6	1264.7	1262.8	1260.1	1250.9	1241.7	1229.5	1220.5	1210.3	1204.0	1196.7
75°	1157.8	1161.9	1159.2	1157.6	1149.4	1143.3	1133.5	1128.6	1121.4	1119.3	1114.3
77.5°	1030.4	1032.3	1028.1	1027.6	1021.4	1017.5	1010.2	1008.9	1003.7	1003.8	999.0
80°	888.5	887.3	880.6	879.4	873.1	871.6	865.8	866.1	861.9	863.6	860.3
82.5°	731.1	727.1	718.3	715.7	708.5	707.9	704.0	707.2	704.7	708.5	706.3
85°	523.9	525.0	521.2	521.2	519.1	519.8	519.4	521.8	522.1	525.6	525.5
87.5°	292.1	296.3	295.4	299.3	299.2	303.4	304.9	311.3	312.1	318.0	318.0
90°	91.8	98.6	97.2	104.2	103.9	111.1	111.9	119.1	119.2	125.3	124.1
92.5°	32.3	30.6	28.9	26.9	26.0	24.8	24.5	22.9	22.5	21.1	20.2
95°	39.9	36.8	33.7	30.7	29.6	28.4	27.4	26.4	25.2	24.2	23.2
97.5°	45.0	41.4	37.7	34.1	33.2	32.3	31.2	30.3	29.4	28.5	27.6
100°	59.8	53.1	46.5	39.6	38.8	38.1	37.3	36.5	35.8	34.8	34.0
102.5°	118.1	103.9	89.5	75.2	72.5	69.8	67.1	64.2	61.4	58.7	56.0
105°	217.5	194.2	171.1	147.9	140.6	133.2	125.9	118.4	111.0	103.6	96.2
107.5°	327.3	303.7	280.3	256.8	243.3	229.7	216.0	202.3	188.8	175.0	161.4
110°	390.2	373.1	356.0	338.7	328.1	317.1	306.1	295.1	284.3	273.3	262.3



TEST NUMBER: P1444842
 CATALOG NUMBER: EHBR1-54-UNV-TA-L940-UPL12

CANDELA DISTRIBUTION (continued):

	330°	332.5°	335°	337.5°	340°	342.5°	345°	347.5°	350°	352.5°	355°
112.5°	402.9	390.8	378.8	366.4	361.7	356.7	352.0	346.9	342.2	337.0	332.1
115°	382.0	374.1	366.0	357.8	356.4	354.7	353.3	351.5	349.9	348.2	346.4
117.5°	347.4	343.0	338.7	334.4	334.8	335.4	336.1	336.5	336.8	337.0	337.4
120°	311.4	310.0	308.7	307.0	309.0	310.7	312.8	314.3	316.0	317.4	319.0
122.5°	283.5	283.2	283.1	282.7	285.2	287.5	289.6	291.8	293.7	295.4	297.2
125°	263.1	263.4	263.7	263.7	266.3	268.6	270.9	272.9	274.9	276.6	278.5
127.5°	251.3	252.0	252.8	253.1	255.4	256.9	258.9	260.3	262.1	263.2	264.5
130°	245.1	245.5	246.3	246.8	248.7	250.5	252.4	253.8	255.4	256.4	257.4
132.5°	243.3	243.8	244.5	244.9	246.7	248.1	249.7	250.6	251.9	252.6	253.3
135°	243.0	243.3	244.0	244.3	246.0	247.4	248.8	249.9	251.1	251.6	252.4
137.5°	243.6	244.0	244.6	244.8	246.4	247.7	249.0	250.0	251.0	251.7	252.3
140°	244.8	244.9	245.5	245.6	247.0	248.2	249.4	250.3	251.4	251.8	252.4
142.5°	246.0	245.9	246.3	246.0	247.2	248.1	249.0	249.8	250.5	251.0	251.3
145°	248.4	248.0	248.1	247.8	248.6	249.3	250.1	250.9	251.2	251.4	251.8
147.5°	251.0	250.5	250.1	249.8	250.8	251.2	251.7	251.9	252.7	252.8	252.9
150°	253.2	252.6	252.0	251.5	252.0	252.3	252.6	253.0	253.3	253.3	253.5
152.5°	254.7	254.1	253.5	252.8	253.0	253.1	253.3	253.3	253.5	253.4	253.4
155°	257.8	257.1	256.6	255.7	256.0	256.0	255.9	255.9	255.7	255.6	255.4
157.5°	262.2	261.3	261.1	260.3	260.2	260.2	260.0	259.5	259.4	259.0	258.5
160°	266.6	266.0	265.6	265.1	264.8	264.6	264.4	263.8	263.7	263.1	262.6
162.5°	271.2	270.6	270.0	269.4	269.2	269.1	268.8	268.2	268.0	267.5	267.0
165°	276.1	275.8	275.4	274.6	274.5	274.2	274.0	273.3	273.1	272.4	271.9
167.5°	280.9	280.5	280.1	279.4	279.3	279.1	278.9	278.6	278.2	277.6	277.4
170°	285.0	284.6	284.3	283.9	283.5	283.4	283.0	282.8	282.3	281.9	281.5
172.5°	287.9	287.6	287.1	286.6	286.6	286.4	286.1	285.9	285.5	285.2	285.0
175°	289.0	288.7	288.2	288.0	287.9	287.7	287.5	287.3	287.0	286.9	286.6
177.5°	290.5	290.4	289.8	289.7	289.6	289.6	289.5	289.3	289.3	289.2	289.0
180°	290.3	290.3	290.3	290.3	290.3	290.3	290.3	290.3	290.3	290.3	290.3



TEST NUMBER: P1444842
 CATALOG NUMBER: EHBR1-54-UNV-TA-L940-UPL12

CANDELA DISTRIBUTION (continued):

	357.5°	360°
0°	43163.3	43163.3
2.5°	43330.5	43328.2
5°	43491.5	43489.0
7.5°	43614.1	43613.3
10°	43628.5	43636.0
12.5°	43541.5	43547.5
15°	43287.3	43299.2
17.5°	42801.3	42816.8
20°	41964.0	41980.2
22.5°	40608.1	40614.9
25°	38636.8	38608.9
27.5°	35949.4	35901.2
30°	32533.0	32486.4
32.5°	28459.6	28430.6
35°	23874.4	23856.1
37.5°	19047.1	19009.7
40°	14360.7	14251.6
42.5°	10250.3	10058.8
45°	7083.9	6856.9
47.5°	4945.3	4805.0
50°	3748.4	3703.1
52.5°	3054.3	3043.7
55°	2577.1	2572.5
57.5°	2218.4	2216.9
60°	1936.7	1936.2
62.5°	1726.7	1727.5
65°	1578.8	1579.0
67.5°	1448.5	1447.6
70°	1298.0	1296.9
72.5°	1194.4	1192.6
75°	1114.3	1113.2
77.5°	1000.4	998.7
80°	862.5	860.3
82.5°	709.4	706.9
85°	529.2	529.4
87.5°	323.7	323.7
90°	130.0	127.9
92.5°	19.8	19.1
95°	22.2	21.1
97.5°	26.7	25.8
100°	33.3	32.5
102.5°	53.3	50.6
105°	88.9	81.5
107.5°	147.7	134.1
110°	251.3	240.3



TEST NUMBER: P1444842
CATALOG NUMBER: EHBR1-54-UNV-TA-L940-UPL12

CANDELA DISTRIBUTION (continued):

	357.5°	360°
112.5°	327.0	322.0
115°	344.2	342.5
117.5°	337.4	337.5
120°	320.0	321.4
122.5°	298.6	300.1
125°	279.9	281.4
127.5°	265.3	266.1
130°	257.8	258.6
132.5°	253.6	253.8
135°	252.5	252.7
137.5°	252.3	252.4
140°	252.3	252.4
142.5°	251.4	251.4
145°	251.8	251.7
147.5°	252.4	252.4
150°	253.1	252.9
152.5°	252.8	252.8
155°	254.9	254.5
157.5°	257.9	257.4
160°	261.9	261.5
162.5°	266.3	265.9
165°	271.1	270.5
167.5°	276.6	276.4
170°	281.0	280.7
172.5°	284.5	284.2
175°	286.4	286.2
177.5°	289.0	288.6
180°	290.3	290.3

LM-79-2019: Approved Method: Electrical and Photometric Measurements of Solid-
State Lighting Products

Report Prepared for

Cooper Lighting Solutions

Metalux

Report Number: SP1-2506-472-7

Test Date: 08/04/2025

Luminaire Tested: EHBR-60-L940-N

Data in this report applies to families of products including EHBR-60-L940-N

Test Information

Test Method: LM-79-2019
 Report Number: SP1-2506-472-7
 Test Lab: COOPER LIGHTING SOLUTIONS
 Photometer: SP1 - 76IN SPHERE
 Measurement Geometry: 4π
 Issue Date: 08/05/2025
 Manufacturer: COOPER LIGHTING SOLUTIONS
 Product Line: Metalux
 Catalog Number: **EHBR-60-L940-N**
 Description: Elevate Round Highbay at, 60000 lumens, 4000K 90CRI LEDs with N lens

Spectral Parameters

CCT (K): 3963
 CIE u': 0.2267
 CIE v': 0.5003
 Duv: -0.0016
 CIE x: 0.3810
 CIE y: 0.3738
 CIE z: 0.2453
 Peak Wavelength (nm): 630
 Dominant Wavelength (nm): 580
 Purity: 26.49712
 R_f: 90.7
 R_g: 101

CRI (Ra):	93.4		
R1:	95.2	R9:	66.4
R2:	95.1	R10:	86.6
R3:	93.3	R11:	94.4
R4:	94.5	R12:	75.4
R5:	94.2	R13:	95.0
R6:	92.9	R14:	95.4
R7:	94.0	R15:	92.8
R8:	87.7		



Test Conditions

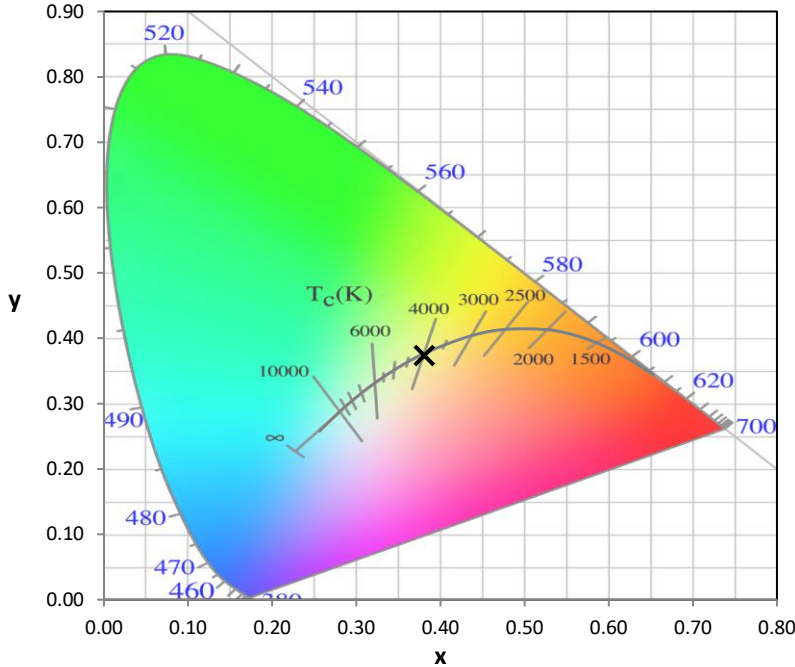
Stabilization Time: 44M
 Operation Time: 1H 44M
 Sphere Temperature (°C): 25.0

REPORT NUMBER: SP1-2506-472-7

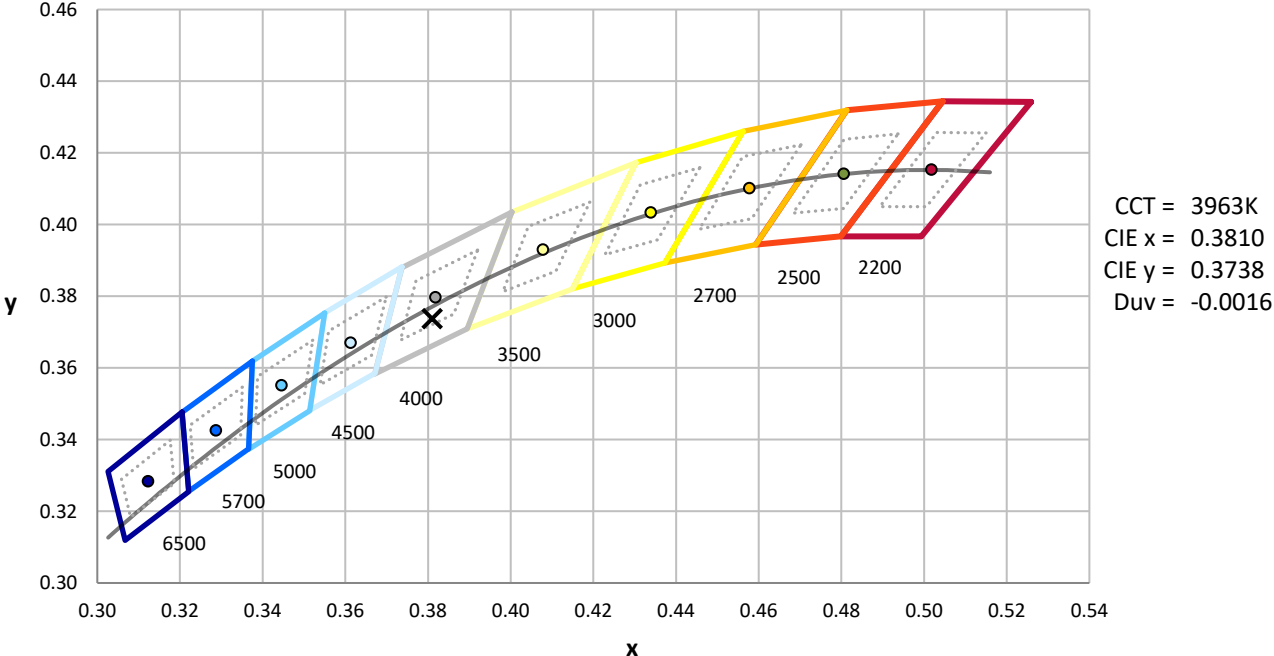
Measurement and Test Equipment			
Instrument	Identification Number	Calibration Date	Calibration Due Date
Photometer	76INCH SPHERE IN0058	6/16/2025	12/16/2025
Power Meter	XITRON INXT2011004	1/21/2025	1/21/2026
AC Power Source	CHROMA 61603 IN0063	10/22/2024	10/22/2025
DC Power Source	AGILENT E3634A IN0208	10/22/2024	10/22/2025
Sphere Thermometer	ONSET IN0085	10/22/2024	10/22/2025
Room Thermometer	ONSET IN0046	10/22/2024	10/22/2025

REPORT NUMBER: SP1-2506-472-7

CIE 1931 Chromaticity Diagram



CIE 1931 Chromaticity Diagram with 2017 ANSI 7-Step and 4-Step Quadrangles



Point lies inside the ANSI 4000K 4-step quadrangle

REPORT NUMBER: SP1-2506-472-7

Photopic Flux vs. Wavelength



Photopic Lumens: NR

λ (nm)	Power W [^] /nm	Lumens (φ/nm)	λ (nm)	Power W [^] /nm	Lumens (φ/nm)	λ (nm)	Power W [^] /nm	Lumens (φ/nm)	λ (nm)	Power W [^] /nm	Lumens (φ/nm)	λ (nm)	Power W [^] /nm	Lumens (φ/nm)
360	0	NR	490	141	NR	620	276	NR	750	5	NR	880	0	NR
365	0	NR	495	167	NR	625	279	NR	755	4	NR	885	0	NR
370	0	NR	500	193	NR	630	1000	NR	760	4	NR	890	0	NR
375	0	NR	505	215	NR	635	628	NR	765	3	NR	895	0	NR
380	0	NR	510	230	NR	640	164	NR	770	3	NR	900	0	NR
385	0	NR	515	243	NR	645	161	NR	775	2	NR	905	0	NR
390	1	NR	520	251	NR	650	137	NR	780	2	NR	910	0	NR
395	2	NR	525	256	NR	655	111	NR	785	2	NR	915	0	NR
400	3	NR	530	262	NR	660	92	NR	790	1	NR	920	0	NR
405	4	NR	535	267	NR	665	76	NR	795	1	NR	925	0	NR
410	6	NR	540	271	NR	670	71	NR	800	1	NR	930	0	NR
415	11	NR	545	276	NR	675	56	NR	805	1	NR	935	0	NR
420	20	NR	550	280	NR	680	47	NR	810	1	NR	940	0	NR
425	37	NR	555	285	NR	685	40	NR	815	1	NR	945	0	NR
430	63	NR	560	290	NR	690	34	NR	820	1	NR	950	0	NR
435	108	NR	565	294	NR	695	29	NR	825	1	NR	955	0	NR
440	186	NR	570	296	NR	700	25	NR	830	0	NR	960	0	NR
445	323	NR	575	298	NR	705	21	NR	835	0	NR	965	0	NR
450	403	NR	580	299	NR	710	18	NR	840	0	NR	970	0	NR
455	293	NR	585	298	NR	715	15	NR	845	0	NR	975	0	NR
460	214	NR	590	296	NR	720	13	NR	850	0	NR	980	0	NR
465	180	NR	595	288	NR	725	11	NR	855	0	NR	985	0	NR
470	132	NR	600	286	NR	730	9	NR	860	0	NR	990	0	NR
475	109	NR	605	282	NR	735	8	NR	865	0	NR	995	0	NR
480	110	NR	610	311	NR	740	7	NR	870	0	NR	1000	0	NR
485	121	NR	615	334	NR	745	6	NR	875	0	NR			

REPORT NUMBER: SP1-2506-472-7

Scotopic Flux vs. Wavelength



Scotopic Lumens: NR

S/P: 1.76

λ (nm)	Power W [^] /nm	Lumens (φ/nm)	λ (nm)	Power W [^] /nm	Lumens (φ/nm)	λ (nm)	Power W [^] /nm	Lumens (φ/nm)	λ (nm)	Power W [^] /nm	Lumens (φ/nm)	λ (nm)	Power W [^] /nm	Lumens (φ/nm)
360	0	NR	490	141	NR	620	276	NR	750	5	NR	880	0	NR
365	0	NR	495	167	NR	625	279	NR	755	4	NR	885	0	NR
370	0	NR	500	193	NR	630	1000	NR	760	4	NR	890	0	NR
375	0	NR	505	215	NR	635	628	NR	765	3	NR	895	0	NR
380	0	NR	510	230	NR	640	164	NR	770	3	NR	900	0	NR
385	0	NR	515	243	NR	645	161	NR	775	2	NR	905	0	NR
390	1	NR	520	251	NR	650	137	NR	780	2	NR	910	0	NR
395	2	NR	525	256	NR	655	111	NR	785	2	NR	915	0	NR
400	3	NR	530	262	NR	660	92	NR	790	1	NR	920	0	NR
405	4	NR	535	267	NR	665	76	NR	795	1	NR	925	0	NR
410	6	NR	540	271	NR	670	71	NR	800	1	NR	930	0	NR
415	11	NR	545	276	NR	675	56	NR	805	1	NR	935	0	NR
420	20	NR	550	280	NR	680	47	NR	810	1	NR	940	0	NR
425	37	NR	555	285	NR	685	40	NR	815	1	NR	945	0	NR
430	63	NR	560	290	NR	690	34	NR	820	1	NR	950	0	NR
435	108	NR	565	294	NR	695	29	NR	825	1	NR	955	0	NR
440	186	NR	570	296	NR	700	25	NR	830	0	NR	960	0	NR
445	323	NR	575	298	NR	705	21	NR	835	0	NR	965	0	NR
450	403	NR	580	299	NR	710	18	NR	840	0	NR	970	0	NR
455	293	NR	585	298	NR	715	15	NR	845	0	NR	975	0	NR
460	214	NR	590	296	NR	720	13	NR	850	0	NR	980	0	NR
465	180	NR	595	288	NR	725	11	NR	855	0	NR	985	0	NR
470	132	NR	600	286	NR	730	9	NR	860	0	NR	990	0	NR
475	109	NR	605	282	NR	735	8	NR	865	0	NR	995	0	NR
480	110	NR	610	311	NR	740	7	NR	870	0	NR	1000	0	NR
485	121	NR	615	334	NR	745	6	NR	875	0	NR			

REPORT NUMBER: SP1-2506-472-7

Melanopic Flux vs. Wavelength



Melanopic Lumens: NR

M/P: 3.64

λ (nm)	Power W [^] /nm	Lumens (φ/nm)	λ (nm)	Power W [^] /nm	Lumens (φ/nm)	λ (nm)	Power W [^] /nm	Lumens (φ/nm)	λ (nm)	Power W [^] /nm	Lumens (φ/nm)	λ (nm)	Power W [^] /nm	Lumens (φ/nm)
360	0	NR	490	141	NR	620	276	NR	750	5	NR	880	0	NR
365	0	NR	495	167	NR	625	279	NR	755	4	NR	885	0	NR
370	0	NR	500	193	NR	630	1000	NR	760	4	NR	890	0	NR
375	0	NR	505	215	NR	635	628	NR	765	3	NR	895	0	NR
380	0	NR	510	230	NR	640	164	NR	770	3	NR	900	0	NR
385	0	NR	515	243	NR	645	161	NR	775	2	NR	905	0	NR
390	1	NR	520	251	NR	650	137	NR	780	2	NR	910	0	NR
395	2	NR	525	256	NR	655	111	NR	785	2	NR	915	0	NR
400	3	NR	530	262	NR	660	92	NR	790	1	NR	920	0	NR
405	4	NR	535	267	NR	665	76	NR	795	1	NR	925	0	NR
410	6	NR	540	271	NR	670	71	NR	800	1	NR	930	0	NR
415	11	NR	545	276	NR	675	56	NR	805	1	NR	935	0	NR
420	20	NR	550	280	NR	680	47	NR	810	1	NR	940	0	NR
425	37	NR	555	285	NR	685	40	NR	815	1	NR	945	0	NR
430	63	NR	560	290	NR	690	34	NR	820	1	NR	950	0	NR
435	108	NR	565	294	NR	695	29	NR	825	1	NR	955	0	NR
440	186	NR	570	296	NR	700	25	NR	830	0	NR	960	0	NR
445	323	NR	575	298	NR	705	21	NR	835	0	NR	965	0	NR
450	403	NR	580	299	NR	710	18	NR	840	0	NR	970	0	NR
455	293	NR	585	298	NR	715	15	NR	845	0	NR	975	0	NR
460	214	NR	590	296	NR	720	13	NR	850	0	NR	980	0	NR
465	180	NR	595	288	NR	725	11	NR	855	0	NR	985	0	NR
470	132	NR	600	286	NR	730	9	NR	860	0	NR	990	0	NR
475	109	NR	605	282	NR	735	8	NR	865	0	NR	995	0	NR
480	110	NR	610	311	NR	740	7	NR	870	0	NR	1000	0	NR
485	121	NR	615	334	NR	745	6	NR	875	0	NR			

Summary

$R_f = 90.7$
 $R_g = 101$
 $CIE R_a = 93.4$
 $R_9 = 66.4$



Color Vector Graphics

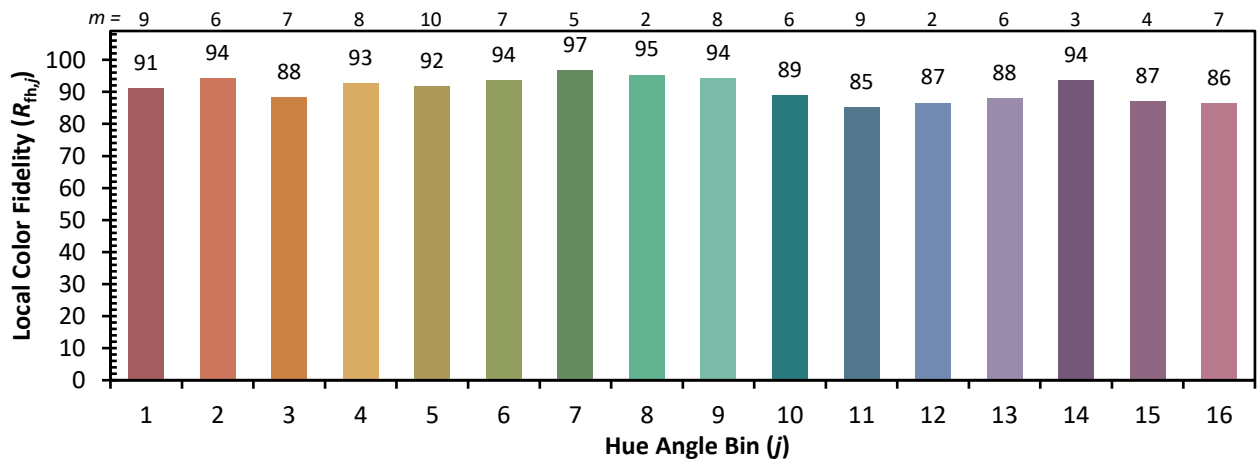
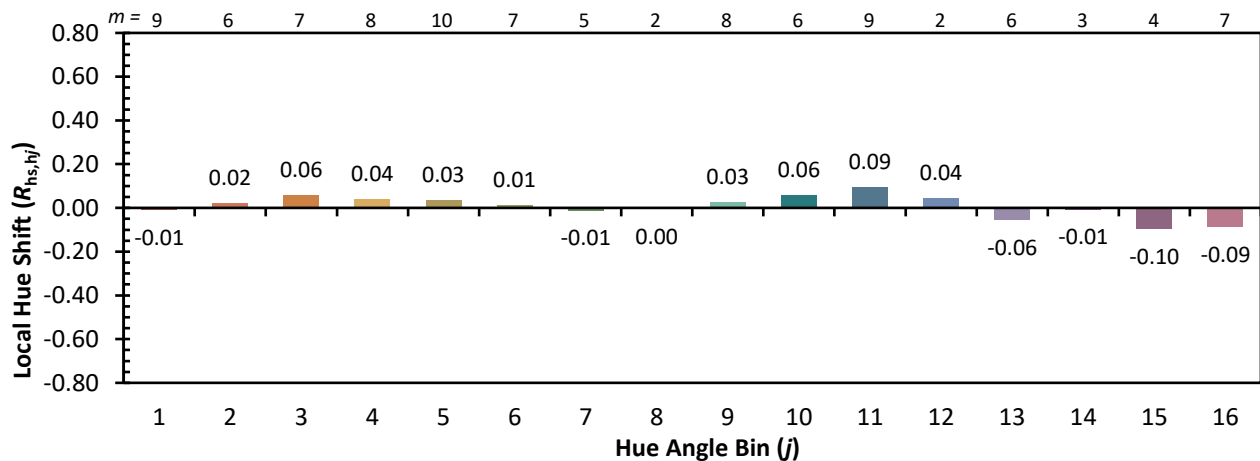
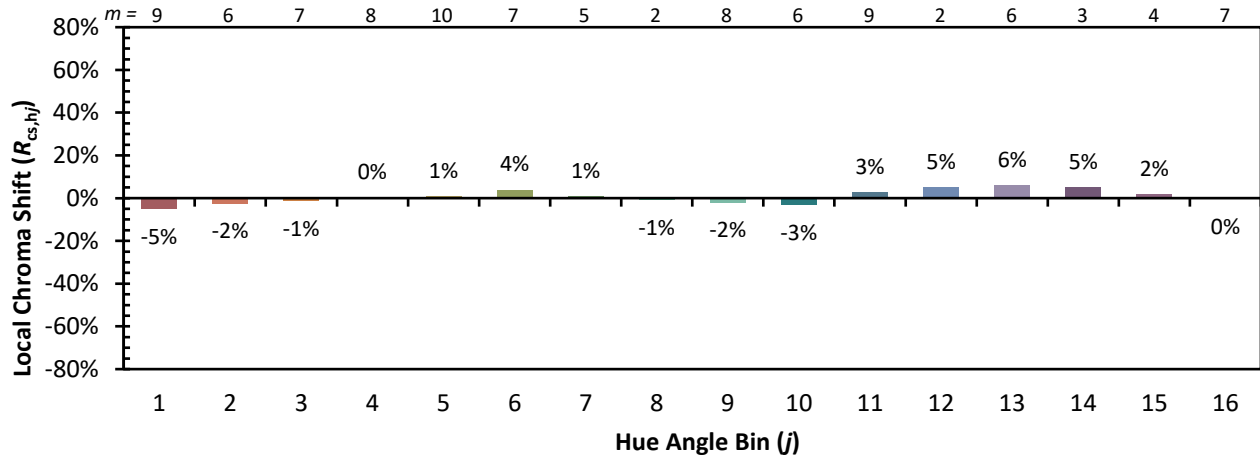


Individual Sample Fidelity Index ($R_{f,i}$)

CES01 = 86	CES26 = 90	CES51 = 99	CES76 = 83
CES02 = 62	CES27 = 93	CES52 = 97	CES77 = 87
CES03 = 31	CES28 = 94	CES53 = 95	CES78 = 79
CES04 = 69	CES29 = 91	CES54 = 96	CES79 = 94
CES05 = 49	CES30 = 98	CES55 = 95	CES80 = 91
CES06 = 50	CES31 = 92	CES56 = 95	CES81 = 80
CES07 = 42	CES32 = 84	CES57 = 94	CES82 = 96
CES08 = 41	CES33 = 95	CES58 = 95	CES83 = 95
CES09 = 29	CES34 = 90	CES59 = 98	CES84 = 93
CES10 = 74	CES35 = 94	CES60 = 93	CES85 = 82
CES11 = 57	CES36 = 84	CES61 = 93	CES86 = 84
CES12 = 63	CES37 = 92	CES62 = 90	CES87 = 90
CES13 = 43	CES38 = 93	CES63 = 92	CES88 = 97
CES14 = 74	CES39 = 98	CES64 = 91	CES89 = 84
CES15 = 71	CES40 = 96	CES65 = 88	CES90 = 99
CES16 = 47	CES41 = 98	CES66 = 88	CES91 = 74
CES17 = 49	CES42 = 89	CES67 = 87	CES92 = 78
CES18 = 56	CES43 = 89	CES68 = 87	CES93 = 87
CES19 = 71	CES44 = 99	CES69 = 88	CES94 = 75
CES20 = 66	CES45 = 93	CES70 = 84	CES95 = 83
CES21 = 85	CES46 = 95	CES71 = 80	CES96 = 91
CES22 = 78	CES47 = 92	CES72 = 93	CES97 = 93
CES23 = 91	CES48 = 96	CES73 = 78	CES98 = 93
CES24 = 90	CES49 = 93	CES74 = 92	CES99 = 94
CES25 = 71	CES50 = 99	CES75 = 81	



Color Rendition by Hue-Angle Bin



Measure Comparisons



(END OF REPORT)