

Cooper Lighting Solutions Photometric Lab  
1121 Highway 74 South  
Peachtree City, GA 30269



Scaled data based on original data using  
LM-79-2019 Approved Method: Electrical and Photometric Measurements of Solid-  
State Lighting Products

Test Report Prepared for  
Cooper Lighting Solutions

Brand: METALUX

Report Number: P1444787

Luminaire Tested: EHBR1-12-UNV-TA-L940-UPL15

Issue Date: 5/1/2026

**Test Information**

Test Method: LM-79-2019  
Report Number: P1444787  
REPORT IS A COMBINATION OF REPORTS P1444309 AND P1431635  
Test Lab: INNOVATION CENTER  
Issue Date: 5/1/2026  
Manufacturer: COOPER LIGHTING SOLUTIONS  
Product Line: METALUX  
Catalog Number: EHBR1-12-UNV-TA-L940-UPL15  
Description: Elevate Round Highbay at, 12000 lumens, 4000K 90CRI LEDs with TA lens  
Light Source: -  
Ballast/Driver: -

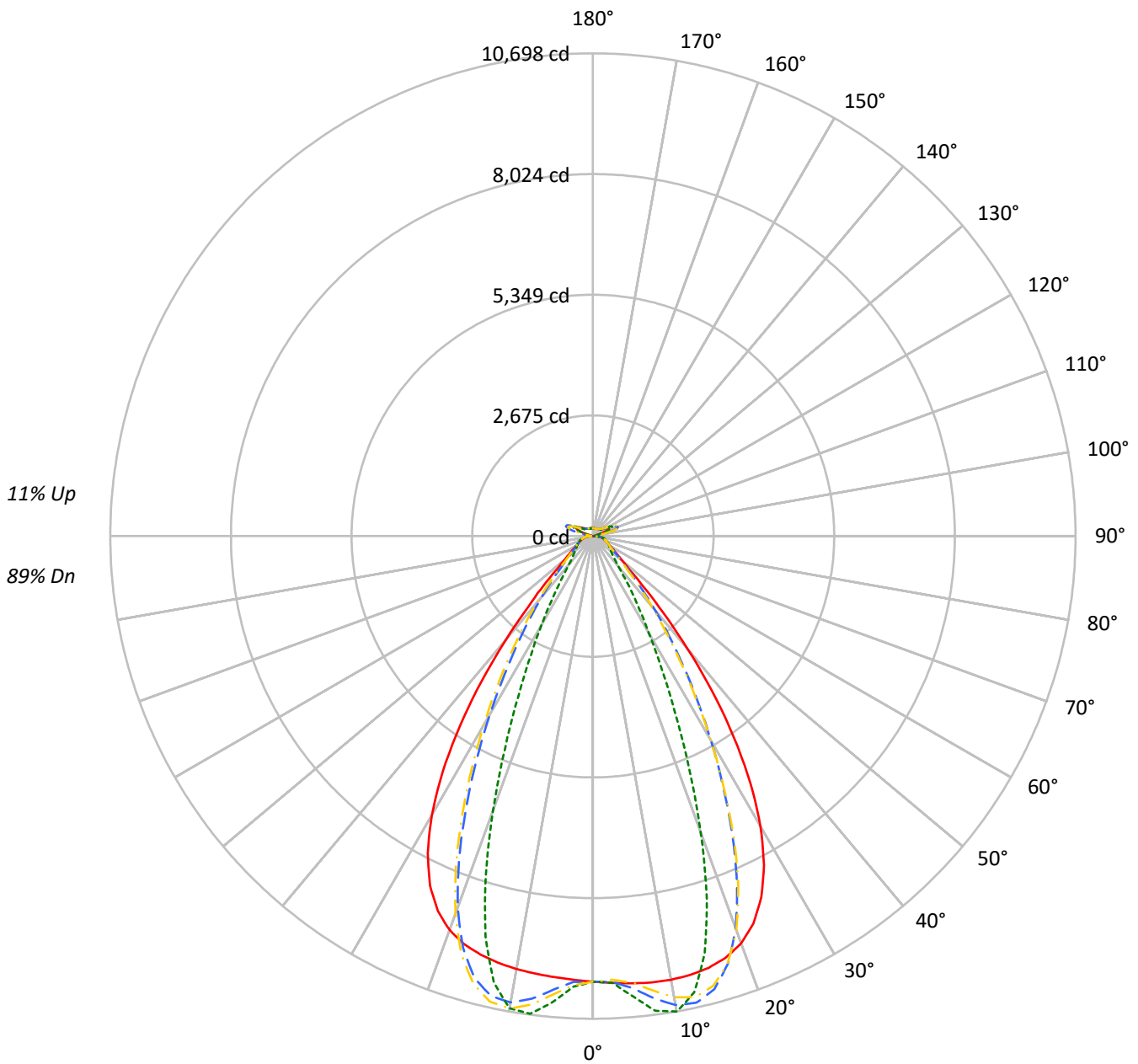
**Summary**

Lumens per Lamp: N/A  
Luminaire Lumens: 12819.4 lumens  
Efficiency: N/A  
Efficacy: 173.2 lumens/watt  
Spacing Criteria (0/90/45): 1.13 / 0.77 / 0.88  
Luminous Opening: Vertical Cylinder (Dia: 1.71' x H: 0.1')  
CIE Type: Semi-Direct

Input Watts (W): 74  
Input Voltage (V): NR  
Input Current (Ain): NR  
Voltage Rise (V): NR  
Power Factor: NR  
Total Harmonic Distortion (THDi): NR  
Frequency (hertz): 60  
Stabilization Time: NR  
Operation Time: NR  
Ambient Temperature (°C): NR  
Test Distance: 24 FT

TEST NUMBER: P1444787  
CATALOG NUMBER: EHBR1-12-UNV-TA-L940-UPL15

### Luminous Intensity Polar Plot



— 0°-180°    - - 45°-225°    - · - 90°-270°    - · - 135°-315°



TEST NUMBER: P1444787  
 CATALOG NUMBER: EHBR1-12-UNV-TA-L940-UPL15

**COEFFICIENT OF UTILIZATION - ZONAL CAVITY METHOD:**

RF	20				20				20				20				20				
RC	80				70				50				30				10			0	
RW	70	50	30	10	70	50	30	10	50	30	10	50	30	10	50	30	10	50	30	10	0
RCR																					
0	116	116	116	116	112	112	112	112	105	105	105	98	98	98	92	92	92	89			89
1	109	106	103	100	105	102	100	97	96	94	92	90	89	87	85	84	83	80			80
2	102	96	91	87	99	94	89	85	88	85	82	84	81	78	79	77	75	73			73
3	96	88	82	78	93	86	81	76	82	77	73	78	74	71	74	71	68	66			66
4	90	81	75	70	87	79	73	69	76	71	67	72	68	65	69	66	63	61			61
5	85	75	68	63	82	73	67	63	70	65	61	67	63	59	65	61	58	56			56
6	80	70	63	58	78	68	62	57	66	60	56	63	58	55	61	57	53	52			52
7	75	65	58	53	73	64	57	53	61	56	52	59	54	51	57	53	50	48			48
8	71	61	54	49	69	60	53	49	57	52	48	55	51	47	54	49	46	45			45
9	68	57	50	46	66	56	50	45	54	49	45	52	47	44	51	46	43	42			42
10	64	53	47	43	62	53	47	42	51	46	42	49	45	41	48	44	41	39			39

**AVERAGE LUMINANCE (cd/sqm):**

	0°	90°	180°	270°
0°	46375	46375	46375	46375
5°	46600	47959	45947	48587
10°	46989	50353	45862	50020
15°	47219	45645	45782	43807
20°	46731	34003	45202	31462
25°	44233	21505	42771	19512
30°	38641	12923	37144	11810
35°	29738	8109	28028	7183
40°	18812	5087	17212	4780
45°	9696	3963	9535	3898
50°	5685	3525	5510	3470
55°	4355	3334	4194	3305
60°	3685	3407	3529	3362
65°	3461	3558	3328	3437
70°	3381	3724	3213	3584
75°	3616	3951	3420	3776
80°	3743	4374	3391	3994
85°	3523	4222	2846	3614

**MAXIMUM LUMINANCE 45°-90°:**

Horizontal Angle: 25°  
 Vertical Angle: 45°  
 Luminance: 14839 cd/sqm



TEST NUMBER: P1444787  
 CATALOG NUMBER: EHBR1-12-UNV-TA-L940-UPL15

**ZONAL LUMENS:**

Zone	Lumens	% Fixture
0°-10°	973.2	7.6
10°-20°	2737.8	21.4
20°-30°	3118.1	24.3
30°-40°	2241.2	17.5
40°-50°	1033.6	8.1
50°-60°	494.6	3.9
60°-70°	360.9	2.8
70°-80°	274.2	2.1
80°-90°	127.2	1.0
90°-100°	40.5	0.3
100°-110°	244.6	1.9
110°-120°	452.0	3.5
120°-130°	273.5	2.1
130°-140°	171.9	1.3
140°-150°	124.4	1.0
150°-160°	84.6	0.7
160°-170°	50.0	0.4
170°-180°	16.9	0.1
0°-30°	6829.2	53.3
0°-40°	9070.4	70.8
0°-60°	10598.6	82.7
0°-90°	11360.9	88.6
90°-120°	737.1	5.8
90°-150°	1306.9	10.2
90°-180°	1459.0	11.4
0°-180°	12819.4	100.0

**CANDELA DISTRIBUTION:**

	0°	90°	180°	270°	360°	Flux
0°	9875	9875	9875	9875	9875	
5°	9950	10240	9810	10374	9950	951
15°	9906	9576	9605	9190	9906	2791
25°	8833	4295	8541	3897	8833	4004
35°	5458	1488	5144	1318	5458	3350
45°	1569	641	1543	631	1569	1334
55°	588	451	567	447	588	543
65°	361	371	347	359	361	361
75°	255	278	241	266	255	265
85°	121	145	98	124	121	114
90°	37	46	14	16	37	23
95°	19	21	19	21	19	18
105°	87	113	58	113	87	116
115°	393	479	412	479	393	363
125°	291	310	330	310	291	265
135°	223	202	241	203	223	174
145°	194	191	206	193	194	122
155°	177	180	190	181	177	83
165°	174	174	180	175	174	49
175°	176	178	179	178	176	17
180°	178	178	178	178	178	



TEST NUMBER: P1444787  
 CATALOG NUMBER: EHBR1-12-UNV-TA-L940-UPL15

**CANDELA DISTRIBUTION (FULL):**

	0°	2.5°	5°	7.5°	10°	12.5°	15°	17.5°	20°	22.5°	25°
0°	9875.3	9875.3	9875.3	9875.3	9875.3	9875.3	9875.3	9875.3	9875.3	9875.3	9875.3
2.5°	9913.0	9912.2	9912.1	9911.4	9911.2	9911.2	9910.8	9910.0	9909.5	9908.4	9907.1
5°	9949.8	9949.3	9949.6	9949.7	9948.9	9947.5	9945.0	9942.1	9938.3	9934.8	9931.7
7.5°	9978.2	9978.9	9979.8	9979.6	9977.5	9973.8	9968.9	9966.1	9967.8	9973.2	9985.5
10°	9983.4	9987.7	9989.3	9988.8	9984.5	9981.4	9982.6	9993.0	10013.9	10041.6	10079.7
12.5°	9963.2	9968.4	9968.2	9966.5	9962.3	9966.6	9981.7	10012.9	10057.5	10112.3	10176.6
15°	9906.4	9913.1	9911.2	9909.0	9906.2	9920.1	9950.3	10004.5	10073.4	10150.7	10229.7
17.5°	9796.0	9804.2	9800.2	9797.7	9795.3	9821.4	9873.5	9952.7	10039.5	10126.9	10201.9
20°	9604.6	9610.0	9600.6	9596.2	9600.0	9651.1	9727.8	9829.0	9920.4	10003.1	10054.3
22.5°	9292.2	9299.0	9281.3	9279.3	9301.1	9379.7	9476.6	9589.7	9675.7	9741.3	9760.9
25°	8833.3	8839.9	8819.0	8831.4	8868.6	8975.8	9091.2	9212.1	9285.5	9334.1	9320.6
27.5°	8213.8	8219.9	8200.0	8225.6	8284.3	8425.0	8560.9	8692.1	8757.5	8791.5	8748.4
30°	7432.5	7445.2	7421.6	7457.4	7546.9	7729.7	7885.4	8032.5	8097.7	8123.6	8056.5
32.5°	6504.6	6522.5	6496.6	6549.8	6674.8	6894.3	7071.1	7235.5	7307.6	7337.2	7261.4
35°	5458.0	5483.8	5454.0	5533.9	5688.0	5932.4	6128.3	6311.8	6397.2	6439.1	6362.8
37.5°	4349.2	4373.8	4357.7	4464.2	4633.4	4886.8	5086.7	5284.7	5381.2	5444.0	5383.8
40°	3260.6	3283.1	3295.2	3417.1	3576.3	3815.1	4007.0	4202.9	4310.9	4389.7	4352.6
42.5°	2301.4	2324.0	2365.4	2483.0	2615.7	2813.4	2977.8	3153.7	3256.8	3341.0	3326.6
45°	1568.8	1595.1	1647.0	1743.2	1839.3	1981.1	2101.8	2238.7	2322.9	2399.9	2400.9
47.5°	1099.3	1117.8	1164.2	1229.9	1292.5	1470.0	1477.3	1544.6	1601.1	1658.8	1666.2
50°	847.2	858.3	882.9	919.6	955.0	1001.1	1043.3	1092.1	1126.9	1158.5	1166.0
52.5°	696.4	703.4	716.0	735.8	756.3	781.5	804.0	830.7	849.8	866.6	870.2
55°	588.5	594.4	613.0	616.8	640.3	644.9	654.9	671.2	682.2	692.3	694.9
57.5°	507.2	511.5	515.4	523.9	531.1	541.7	550.1	561.8	568.8	576.0	576.7
60°	443.0	446.1	448.9	454.7	459.7	467.0	472.9	480.8	485.8	491.3	491.9
62.5°	395.2	397.4	399.3	403.2	406.7	412.3	417.0	423.6	428.3	432.5	433.4
65°	361.3	362.9	364.1	367.0	370.0	374.9	379.1	384.5	387.9	391.2	391.9
67.5°	331.2	332.7	334.0	336.6	338.7	342.4	345.2	349.3	351.8	354.4	354.5
70°	296.7	298.1	299.1	301.6	303.3	306.3	308.7	312.3	314.9	317.8	318.5
72.5°	272.9	273.7	274.9	277.3	279.6	282.9	285.9	289.7	292.9	296.0	297.2
75°	254.7	255.6	256.5	258.4	260.1	262.9	265.1	268.6	271.4	274.6	276.2
77.5°	228.5	229.7	230.4	232.3	233.7	236.4	238.0	241.2	243.4	246.4	247.8
80°	196.9	197.9	198.4	200.2	201.3	203.8	205.4	208.5	210.4	213.3	215.0
82.5°	161.7	162.8	163.0	164.8	165.4	167.4	168.6	171.7	174.0	177.9	180.5
85°	121.1	121.5	122.0	121.6	124.1	124.2	127.0	127.5	131.2	132.1	136.3
87.5°	74.1	75.2	75.6	77.3	78.1	79.7	80.3	82.1	83.1	85.2	86.1
90°	37.4	39.5	40.5	42.9	43.9	46.0	47.0	49.3	50.3	52.7	54.4
92.5°	16.3	17.4	18.4	19.7	20.8	22.2	23.4	24.6	25.7	27.0	29.3
95°	18.6	19.9	21.2	22.5	23.8	25.1	26.4	27.6	28.9	30.2	33.9
97.5°	23.4	24.5	25.6	26.7	27.9	29.0	30.1	31.2	32.3	33.4	37.9
100°	30.7	31.6	32.5	33.4	34.4	35.4	36.3	37.3	38.2	39.1	47.4
102.5°	51.1	54.4	57.8	61.0	64.4	67.7	71.1	74.3	77.7	81.1	98.6
105°	87.0	96.0	105.2	114.1	123.2	132.3	141.3	150.3	159.4	168.4	197.0
107.5°	149.2	165.8	182.6	199.4	216.1	232.9	249.7	266.5	283.1	299.9	328.9
110°	276.3	289.7	303.3	316.7	330.2	343.8	357.3	370.6	384.1	397.6	418.8



TEST NUMBER: P1444787  
 CATALOG NUMBER: EHBR1-12-UNV-TA-L940-UPL15

**CANDELA DISTRIBUTION (continued):**

	0°	2.5°	5°	7.5°	10°	12.5°	15°	17.5°	20°	22.5°	25°
112.5°	372.8	378.8	385.0	391.0	397.2	403.3	409.4	415.4	421.6	427.6	442.7
115°	393.2	395.3	397.4	399.5	401.7	403.9	406.0	408.1	410.2	412.3	422.5
117.5°	381.3	380.9	380.6	380.3	379.8	379.5	379.1	378.7	378.3	377.9	383.7
120°	355.0	353.2	351.3	349.5	347.7	345.7	344.0	342.1	340.1	338.2	340.7
122.5°	321.9	319.7	317.6	315.4	313.1	310.9	308.7	306.3	304.1	301.9	302.9
125°	291.3	289.1	286.9	284.7	282.4	280.1	277.9	275.6	273.3	270.9	271.5
127.5°	264.6	263.0	261.6	259.9	258.3	256.8	255.1	253.4	251.9	250.1	250.3
130°	247.3	245.9	244.5	243.1	241.6	240.2	238.7	237.2	235.7	234.1	234.4
132.5°	232.9	232.1	231.1	230.0	229.0	227.9	226.9	225.6	224.6	223.6	223.9
135°	223.3	222.5	221.5	220.6	219.7	218.7	217.6	216.6	215.6	214.5	214.9
137.5°	215.1	214.4	213.5	212.7	211.8	210.8	209.9	209.0	207.9	207.0	207.4
140°	207.7	206.9	206.2	205.3	204.6	203.8	202.9	202.0	201.1	200.2	200.8
142.5°	199.2	198.6	198.2	197.4	196.9	196.2	195.5	194.7	194.1	193.3	194.1
145°	193.7	193.2	192.8	192.3	191.7	191.1	190.5	190.0	189.3	188.8	189.5
147.5°	188.8	188.5	188.1	187.6	187.3	186.8	186.3	185.8	185.3	184.7	185.5
150°	184.6	184.2	183.9	183.4	183.0	182.6	182.1	181.7	181.2	180.6	181.5
152.5°	180.1	179.7	179.4	179.0	178.6	178.2	177.9	177.3	176.8	176.4	177.0
155°	177.4	177.0	176.6	176.3	175.9	175.5	175.1	174.7	174.2	173.8	174.3
157.5°	175.4	175.1	175.0	174.6	174.3	174.0	173.8	173.4	173.1	172.8	173.1
160°	174.6	174.3	174.0	173.8	173.4	173.1	172.8	172.4	172.2	171.9	172.3
162.5°	173.7	173.4	173.1	172.8	172.5	172.3	172.0	171.7	171.4	171.1	171.4
165°	173.5	173.3	173.1	172.9	172.7	172.5	172.4	172.2	172.0	171.8	172.1
167.5°	174.8	174.5	174.3	174.0	173.8	173.7	173.4	173.1	172.9	172.5	172.9
170°	175.1	175.0	174.9	174.8	174.6	174.5	174.4	174.2	174.0	173.9	174.2
172.5°	176.0	175.8	175.7	175.7	175.5	175.4	175.3	175.2	175.1	175.1	175.3
175°	175.9	175.7	175.7	175.6	175.5	175.5	175.4	175.3	175.3	175.2	175.4
177.5°	177.0	176.9	176.9	176.9	176.9	176.9	176.8	176.7	176.7	176.7	176.9
180°	178.0	178.0	178.0	178.0	178.0	178.0	178.0	178.0	178.0	178.0	178.0



TEST NUMBER: P1444787  
 CATALOG NUMBER: EHBR1-12-UNV-TA-L940-UPL15

**CANDELA DISTRIBUTION (continued):**

	27.5°	30°	32.5°	35°	37.5°	40°	42.5°	45°	47.5°	50°	52.5°
0°	9875.3	9875.3	9875.3	9875.3	9875.3	9875.3	9875.3	9875.3	9875.3	9875.3	9875.3
2.5°	9906.2	9905.0	9903.3	9901.2	9899.5	9897.3	9892.4	9890.9	9892.6	9893.7	9895.9
5°	9929.7	9930.4	9930.7	9935.2	9939.1	9948.8	10024.7	10054.9	10078.3	10093.1	10115.6
7.5°	10000.7	10023.5	10046.1	10076.5	10102.7	10138.1	10271.0	10327.6	10367.8	10396.7	10432.3
10°	10120.9	10170.8	10217.5	10272.2	10319.4	10373.2	10496.9	10552.1	10586.9	10612.3	10635.9
12.5°	10242.0	10311.2	10373.7	10434.6	10485.6	10532.3	10575.9	10595.1	10596.7	10597.6	10585.0
15°	10305.2	10371.3	10426.3	10466.6	10496.6	10509.8	10434.9	10395.6	10345.9	10305.0	10237.7
17.5°	10265.3	10305.0	10328.8	10326.5	10314.1	10272.6	10060.5	9943.7	9827.8	9723.4	9586.5
20°	10088.3	10085.2	10064.6	10006.0	9935.4	9825.6	9461.8	9251.9	9049.0	8870.8	8654.5
22.5°	9759.0	9707.2	9634.9	9508.6	9368.2	9176.4	8655.1	8346.2	8063.8	7814.2	7534.6
25°	9281.8	9175.1	9041.9	8841.3	8623.2	8343.4	7700.9	7316.9	6977.7	6683.4	6360.9
27.5°	8671.0	8510.4	8315.1	8037.5	7742.1	7383.7	6671.2	6247.4	5883.2	5567.9	5224.6
30°	7948.0	7739.1	7487.0	7142.4	6785.9	6379.4	5657.0	5227.6	4859.1	4534.6	4191.0
32.5°	7130.9	6886.3	6590.7	6204.0	5818.6	5400.7	4702.9	4287.3	3935.3	3623.1	3312.1
35°	6229.6	5967.3	5654.7	5260.3	4877.1	4470.8	3830.5	3455.8	3145.0	2869.0	2617.9
37.5°	5263.0	5005.4	4708.2	4336.4	3981.2	3612.9	3060.5	2746.5	2485.6	2256.6	2062.8
40°	4257.8	4032.4	3775.3	3453.9	3150.7	2844.0	2390.5	2141.3	1935.4	1760.8	1615.5
42.5°	3265.0	3090.3	2893.1	2639.2	2407.2	2173.6	1824.6	1640.0	1487.5	1361.7	1259.0
45°	2368.9	2252.0	2119.8	1943.2	1782.7	1619.8	1371.4	1241.6	1142.3	1061.2	992.7
47.5°	1656.0	1588.2	1584.1	1420.9	1303.2	1203.6	1043.5	961.6	900.7	851.6	808.2
50°	1163.0	1130.2	1089.4	1031.1	976.6	920.3	822.7	773.2	737.6	707.8	680.4
52.5°	869.4	852.4	830.7	799.7	770.2	738.5	676.7	645.3	634.1	606.3	584.6
55°	694.4	684.7	672.3	654.1	636.1	629.0	576.0	552.7	537.7	526.8	515.2
57.5°	576.8	569.5	562.2	549.9	539.4	526.8	498.8	486.8	477.9	471.5	463.4
60°	492.0	487.6	483.5	476.4	470.7	463.9	446.1	439.3	434.7	430.8	425.7
62.5°	434.2	432.0	429.9	426.0	423.2	419.5	407.3	404.1	401.7	399.8	396.7
65°	392.6	390.9	389.8	387.2	385.8	383.7	373.1	371.0	369.6	368.8	367.0
67.5°	354.7	353.0	352.3	350.4	349.8	348.4	339.9	338.7	338.2	338.5	337.8
70°	319.3	318.5	318.9	318.6	319.5	319.6	314.5	314.4	315.0	316.1	316.2
72.5°	298.0	298.0	298.4	298.6	299.3	299.7	295.4	295.2	295.4	296.3	296.3
75°	277.8	278.2	279.2	279.6	280.5	280.7	275.0	274.4	274.4	275.1	274.9
77.5°	249.9	251.1	253.1	254.2	256.0	256.3	250.0	249.1	249.2	250.0	249.3
80°	218.1	220.4	223.8	226.1	228.8	229.8	223.3	221.7	220.2	220.1	218.8
82.5°	184.5	187.3	191.3	193.3	196.2	196.9	185.9	183.7	182.5	182.6	181.4
85°	140.8	142.9	146.5	147.8	149.5	149.3	136.8	131.4	132.9	130.6	132.4
87.5°	88.3	89.5	91.9	92.1	93.0	92.8	80.1	77.6	76.9	77.0	76.0
90°	57.4	59.1	62.0	63.0	65.2	65.9	56.6	56.3	54.6	54.3	52.3
92.5°	31.7	33.8	36.1	38.5	40.8	43.0	44.2	46.1	43.8	41.4	39.1
95°	37.7	41.5	45.3	49.0	52.8	56.6	60.4	64.1	60.6	57.0	53.5
97.5°	42.4	46.8	51.2	55.7	60.2	64.6	69.0	73.5	69.8	65.9	62.1
100°	55.7	64.0	72.2	80.6	88.9	97.2	105.5	113.8	106.5	99.1	91.9
102.5°	116.2	133.9	151.5	169.0	186.6	204.3	221.9	239.5	222.8	206.1	189.4
105°	225.6	254.1	282.7	311.2	339.7	368.2	396.9	425.4	398.7	371.9	345.2
107.5°	357.8	386.7	415.7	444.6	473.6	502.5	531.7	560.7	534.6	508.5	482.4
110°	439.9	461.0	482.1	503.3	524.4	545.5	566.9	588.1	572.4	556.8	541.0



TEST NUMBER: P1444787  
 CATALOG NUMBER: EHBR1-12-UNV-TA-L940-UPL15

**CANDELA DISTRIBUTION (continued):**

	27.5°	30°	32.5°	35°	37.5°	40°	42.5°	45°	47.5°	50°	52.5°
112.5°	457.8	473.0	488.2	503.2	518.3	533.4	548.9	564.0	556.2	548.4	540.5
115°	432.7	443.1	453.2	463.4	473.6	483.9	494.4	504.8	502.3	499.7	497.3
117.5°	389.4	395.1	401.0	406.7	412.3	418.0	424.4	430.1	430.6	431.2	431.6
120°	343.2	345.6	348.2	350.6	353.0	355.4	358.5	361.0	363.2	365.4	367.5
122.5°	303.8	304.8	305.8	306.7	307.6	308.6	310.2	311.4	312.8	314.4	316.0
125°	271.9	272.5	273.1	273.5	273.9	274.6	275.9	276.4	276.7	276.7	277.0
127.5°	250.4	250.7	250.8	251.0	251.1	251.3	252.2	252.6	251.7	251.0	250.1
130°	234.8	235.0	235.3	235.6	236.0	236.2	237.5	237.9	236.5	234.9	233.4
132.5°	224.3	224.7	225.0	225.5	225.7	226.1	227.5	228.1	226.4	224.6	222.8
135°	215.3	215.9	216.2	216.7	217.1	217.7	219.2	219.9	218.2	216.5	214.8
137.5°	207.8	208.3	208.8	209.2	209.6	210.2	211.9	212.6	211.3	209.9	208.6
140°	201.2	201.9	202.4	203.0	203.5	204.2	206.0	206.8	205.9	204.7	203.7
142.5°	194.7	195.5	196.2	197.0	197.8	198.5	200.7	201.7	201.0	200.2	199.6
145°	190.2	191.2	192.0	192.9	193.7	194.6	196.9	198.2	197.7	197.3	196.8
147.5°	186.2	187.0	187.7	188.6	189.4	190.3	192.7	193.9	193.6	193.3	193.0
150°	182.1	183.0	183.7	184.6	185.5	186.3	189.0	190.3	190.1	189.9	189.6
152.5°	177.8	178.4	179.2	180.0	180.7	181.6	184.7	186.0	185.7	185.4	185.2
155°	174.8	175.4	176.0	176.5	177.1	177.9	181.0	182.2	182.1	182.0	181.9
157.5°	173.6	173.9	174.3	174.8	175.2	175.7	179.0	180.1	180.0	179.8	179.7
160°	172.4	172.8	173.1	173.5	173.8	174.2	177.5	178.6	178.5	178.3	178.2
162.5°	171.9	172.4	172.6	173.1	173.6	173.9	177.4	178.5	178.3	178.1	177.9
165°	172.3	172.5	172.8	173.1	173.4	173.8	176.7	177.8	177.7	177.6	177.5
167.5°	173.1	173.5	173.7	173.9	174.2	174.6	177.4	178.4	178.3	178.2	178.1
170°	174.3	174.6	174.9	175.1	175.3	175.7	178.0	178.8	178.7	178.5	178.3
172.5°	175.5	175.9	176.2	176.4	176.6	177.0	179.0	179.8	179.6	179.5	179.2
175°	175.7	175.8	176.1	176.4	176.5	176.7	178.4	179.0	178.9	178.9	178.8
177.5°	177.1	177.2	177.4	177.5	177.7	177.9	178.9	179.2	179.2	179.2	179.2
180°	178.0	178.0	178.0	178.0	178.0	178.0	178.0	178.0	178.0	178.0	178.0



TEST NUMBER: P1444787  
 CATALOG NUMBER: EHBR1-12-UNV-TA-L940-UPL15

**CANDELA DISTRIBUTION (continued):**

	55°	57.5°	60°	62.5°	65°	67.5°	70°	72.5°	75°	77.5°	80°
0°	9875.3	9875.3	9875.3	9875.3	9875.3	9875.3	9875.3	9875.3	9875.3	9875.3	9875.3
2.5°	9896.5	9899.9	9900.5	9904.5	9904.2	9909.0	9908.2	9912.2	9909.9	9913.2	9910.4
5°	10128.9	10150.0	10161.0	10181.6	10188.1	10206.5	10211.7	10228.5	10229.2	10242.5	10239.4
7.5°	10457.5	10488.7	10507.1	10532.5	10545.4	10566.5	10575.9	10591.6	10596.6	10609.0	10610.0
10°	10653.7	10668.8	10679.4	10686.5	10693.0	10696.0	10699.6	10698.6	10699.6	10698.2	10701.3
12.5°	10576.6	10554.5	10540.0	10512.4	10496.4	10465.9	10450.9	10421.7	10411.0	10385.8	10382.2
15°	10185.7	10108.9	10054.7	9975.8	9926.1	9848.5	9803.1	9733.1	9701.1	9645.4	9630.8
17.5°	9473.2	9330.6	9220.3	9078.9	8980.7	8848.4	8765.3	8655.8	8595.8	8507.6	8477.0
20°	8474.2	8263.4	8098.0	7900.8	7759.8	7584.1	7471.5	7329.6	7247.3	7138.8	7094.9
22.5°	7301.5	7039.0	6832.3	6599.5	6429.3	6233.5	6098.6	5945.1	5855.5	5737.7	5685.6
25°	6092.8	5803.2	5573.5	5328.2	5148.4	4952.1	4817.3	4666.4	4573.6	4461.8	4410.0
27.5°	4936.7	4643.6	4421.6	4193.5	4028.6	3851.4	3729.8	3598.1	3515.8	3420.4	3371.6
30°	3916.5	3658.0	3469.1	3279.9	3142.6	2998.8	2897.6	2788.5	2716.3	2634.6	2588.1
32.5°	3085.3	2885.8	2737.8	2587.6	2475.4	2355.1	2267.8	2171.5	2106.3	2033.3	1991.3
35°	2443.6	2288.5	2170.5	2046.8	1950.4	1848.0	1771.1	1687.9	1629.4	1566.6	1530.3
37.5°	1930.6	1807.4	1710.3	1607.6	1528.4	1443.5	1414.9	1319.6	1258.9	1208.8	1174.1
40°	1515.2	1417.1	1336.8	1258.3	1193.6	1129.3	1077.6	1026.7	987.5	951.7	926.9
42.5°	1183.3	1112.2	1053.5	996.0	948.9	902.0	864.6	829.4	803.2	779.7	763.7
45°	940.6	891.8	851.0	810.4	777.2	746.0	720.7	698.4	681.3	667.2	657.3
47.5°	772.7	739.3	710.6	683.2	660.6	640.1	623.3	617.8	599.4	587.1	582.5
50°	656.7	636.5	614.7	594.5	579.4	564.4	553.5	542.8	535.9	530.2	528.5
52.5°	570.2	554.7	542.5	529.7	519.9	509.1	501.6	494.4	490.7	487.7	487.3
55°	505.8	495.0	486.9	478.3	472.3	466.1	462.2	458.5	456.8	455.3	455.4
57.5°	457.1	449.8	444.6	439.1	435.8	432.8	431.8	430.9	431.4	431.6	432.5
60°	421.6	416.8	413.6	410.4	409.0	408.1	408.8	409.6	411.4	412.7	414.0
62.5°	394.4	391.7	390.1	388.3	388.2	388.3	389.7	391.2	393.3	394.9	396.1
65°	366.3	364.8	364.3	363.2	363.7	364.1	365.9	367.0	369.1	370.4	371.9
67.5°	338.1	337.7	338.0	338.0	339.0	339.9	341.5	342.8	344.6	345.8	347.0
70°	317.1	317.3	318.1	318.3	319.3	319.8	321.3	322.2	323.7	324.8	326.3
72.5°	296.8	296.5	296.7	296.3	296.6	296.4	297.3	297.7	299.1	299.8	301.7
75°	275.2	274.3	274.1	273.1	273.2	272.4	272.8	272.7	273.6	274.0	275.3
77.5°	249.1	247.5	246.8	245.2	245.1	244.6	245.2	245.6	247.2	248.0	249.5
80°	217.8	215.4	214.3	212.4	212.8	212.6	214.3	215.5	217.4	217.8	219.7
82.5°	181.0	178.6	177.4	175.5	176.0	176.1	177.5	177.8	179.4	180.2	182.4
85°	129.6	130.6	128.0	128.2	127.6	128.7	129.6	130.9	132.3	134.7	136.5
87.5°	76.3	76.0	77.0	77.0	78.4	79.1	81.1	82.4	84.8	86.6	90.0
90°	51.4	49.5	49.4	48.1	48.5	47.4	48.0	46.8	47.4	47.0	48.2
92.5°	36.5	34.3	31.8	29.4	27.0	24.8	23.5	22.5	21.2	20.3	19.1
95°	49.9	46.5	42.9	39.4	36.0	32.4	31.1	29.8	28.6	27.3	26.0
97.5°	58.3	54.6	50.8	47.0	43.1	39.4	38.6	37.7	36.8	36.0	35.1
100°	84.6	77.2	70.0	62.6	55.3	48.1	47.4	46.7	46.0	45.4	44.6
102.5°	172.7	155.9	139.2	122.5	105.8	89.1	86.2	83.3	80.3	77.4	74.5
105°	318.4	291.7	265.1	238.2	211.6	184.8	176.9	168.8	160.9	152.9	145.0
107.5°	456.3	430.2	404.2	378.1	352.1	326.0	313.4	300.8	288.2	275.6	263.0
110°	525.4	509.7	494.1	478.3	462.7	447.2	435.1	423.2	411.0	399.1	387.1



TEST NUMBER: P1444787  
 CATALOG NUMBER: EHBR1-12-UNV-TA-L940-UPL15

**CANDELA DISTRIBUTION (continued):**

	55°	57.5°	60°	62.5°	65°	67.5°	70°	72.5°	75°	77.5°	80°
112.5°	532.6	524.9	517.1	509.2	501.5	493.7	487.8	481.9	476.2	470.2	464.3
115°	494.8	492.4	489.9	487.4	485.0	482.5	482.1	481.8	481.3	480.9	480.5
117.5°	432.0	432.6	433.0	433.6	434.1	434.6	437.8	440.9	444.1	447.3	450.5
120°	369.7	371.8	374.1	376.2	378.3	380.6	384.8	389.1	393.2	397.5	401.9
122.5°	317.5	319.0	320.5	322.2	323.7	325.1	329.3	333.6	337.8	342.0	346.3
125°	277.1	277.2	277.4	277.4	277.5	277.7	281.2	284.6	288.1	291.7	295.1
127.5°	249.3	248.4	247.5	246.7	245.9	245.0	247.1	249.2	251.2	253.3	255.5
130°	231.8	230.4	228.7	227.2	225.6	224.2	225.0	225.8	226.7	227.6	228.4
132.5°	221.0	219.2	217.4	215.5	213.7	211.9	211.9	211.9	212.0	212.1	212.2
135°	213.1	211.5	209.7	207.9	206.3	204.6	204.1	203.8	203.4	203.0	202.7
137.5°	207.3	205.9	204.5	203.2	201.8	200.5	199.8	199.3	198.7	198.3	197.7
140°	202.6	201.5	200.4	199.4	198.2	197.2	196.7	196.2	195.7	195.4	194.9
142.5°	198.6	197.9	197.0	196.3	195.5	194.7	194.2	193.8	193.3	192.9	192.6
145°	196.3	195.8	195.3	194.8	194.3	193.9	193.4	193.1	192.8	192.5	192.2
147.5°	192.8	192.5	192.2	191.9	191.5	191.3	191.0	190.8	190.5	190.4	190.1
150°	189.2	189.0	188.8	188.5	188.2	187.9	187.7	187.6	187.5	187.5	187.3
152.5°	184.9	184.7	184.5	184.3	183.9	183.6	183.5	183.5	183.4	183.3	183.2
155°	181.7	181.6	181.4	181.2	181.0	180.8	180.7	180.6	180.4	180.2	180.0
157.5°	179.6	179.4	179.2	179.2	179.0	178.8	178.6	178.5	178.3	178.2	178.0
160°	178.0	177.9	177.8	177.7	177.5	177.4	177.1	176.8	176.6	176.4	176.2
162.5°	177.7	177.5	177.3	177.1	176.8	176.6	176.5	176.3	176.1	176.0	175.8
165°	177.3	177.2	177.0	176.8	176.7	176.6	176.4	176.1	175.9	175.6	175.3
167.5°	177.9	177.9	177.7	177.6	177.4	177.3	177.1	176.8	176.5	176.4	176.2
170°	178.1	177.9	177.9	177.6	177.4	177.1	176.9	176.7	176.5	176.3	176.1
172.5°	179.2	179.1	178.9	178.7	178.5	178.3	178.1	177.9	177.8	177.6	177.5
175°	178.7	178.7	178.7	178.5	178.5	178.4	178.3	178.3	178.2	178.2	178.1
177.5°	179.2	179.2	179.2	179.1	179.1	179.1	178.9	178.8	178.7	178.5	178.4
180°	178.0	178.0	178.0	178.0	178.0	178.0	178.0	178.0	178.0	178.0	178.0



TEST NUMBER: P1444787  
 CATALOG NUMBER: EHBR1-12-UNV-TA-L940-UPL15

**CANDELA DISTRIBUTION (continued):**

	82.5°	85°	87.5°	90°	92.5°	95°	97.5°	100°	102.5°	105°	107.5°
0°	9875.3	9875.3	9875.3	9875.3	9875.3	9875.3	9875.3	9875.3	9875.3	9875.3	9875.3
2.5°	9913.3	9910.8	9912.0	9907.3	9908.4	9902.8	9902.3	9895.9	9895.4	9889.4	9887.2
5°	10248.9	10243.3	10249.6	10239.9	10241.9	10229.2	10228.2	10211.8	10206.2	10185.8	10176.9
7.5°	10617.8	10615.7	10619.5	10611.4	10611.2	10599.9	10595.2	10580.6	10571.5	10550.0	10536.4
10°	10698.6	10700.5	10697.4	10698.2	10693.8	10692.6	10688.1	10685.2	10677.9	10672.3	10664.1
12.5°	10363.1	10365.0	10352.3	10360.4	10353.9	10368.9	10367.7	10385.3	10388.0	10410.4	10418.9
15°	9587.5	9585.0	9560.5	9576.0	9567.6	9600.5	9607.9	9652.1	9675.7	9732.5	9767.4
17.5°	8415.8	8409.5	8374.9	8393.8	8384.2	8432.7	8448.9	8519.6	8563.7	8655.2	8720.4
20°	7019.2	7007.1	6966.7	6988.7	6978.9	7033.9	7057.1	7142.6	7199.4	7320.6	7406.8
22.5°	5605.2	5586.1	5546.5	5567.1	5557.7	5614.7	5645.0	5730.7	5795.9	5920.2	6020.9
25°	4335.5	4318.5	4280.2	4294.6	4291.2	4339.3	4366.3	4447.3	4511.3	4629.8	4725.9
27.5°	3306.8	3289.1	3254.4	3264.7	3261.1	3302.2	3327.6	3395.3	3450.4	3550.1	3634.4
30°	2530.9	2509.5	2480.1	2485.7	2483.4	2516.7	2540.3	2597.3	2644.6	2728.9	2801.6
32.5°	1940.0	1918.4	1891.4	1894.0	1890.5	1916.7	1936.1	1985.7	2026.9	2098.5	2161.8
35°	1484.3	1509.5	1451.9	1488.3	1450.4	1506.1	1486.1	1517.1	1552.5	1612.9	1665.6
37.5°	1141.1	1123.6	1108.8	1107.2	1107.1	1120.0	1135.3	1165.1	1196.3	1241.3	1287.8
40°	904.3	892.0	882.4	881.7	882.4	891.6	902.9	923.4	946.3	978.6	1012.8
42.5°	750.0	741.9	736.0	735.6	737.5	744.0	751.8	764.0	778.9	799.9	823.3
45°	649.1	644.6	641.3	641.2	642.0	645.4	649.9	657.6	667.0	680.0	694.9
47.5°	578.4	577.2	575.2	575.3	574.4	575.8	576.3	580.6	585.5	595.4	614.8
50°	526.8	526.8	525.4	525.4	524.1	524.0	522.8	524.5	526.8	533.0	539.1
52.5°	486.0	485.9	484.5	484.2	482.8	482.7	481.8	482.4	482.7	485.8	489.5
55°	454.3	453.2	451.3	450.6	450.2	450.9	450.5	450.6	450.2	451.5	452.6
57.5°	431.4	430.1	428.3	427.7	427.6	428.6	428.6	428.3	426.5	425.4	423.7
60°	413.3	412.1	410.0	409.6	409.8	411.1	411.0	410.0	407.4	405.2	402.6
62.5°	395.6	395.0	394.0	393.9	393.6	393.8	393.0	391.8	389.2	386.8	384.0
65°	371.7	372.0	371.3	371.4	370.4	370.2	368.8	367.7	365.2	363.1	360.2
67.5°	347.0	347.2	346.6	346.6	346.1	346.2	345.3	344.2	342.1	340.3	338.1
70°	326.6	327.1	326.7	326.8	326.3	326.1	324.8	323.7	321.5	320.0	318.0
72.5°	302.2	303.3	303.3	303.5	302.6	302.2	300.6	299.3	297.3	296.2	294.6
75°	275.9	277.3	277.6	278.3	277.1	276.4	274.6	273.6	272.0	271.3	270.3
77.5°	250.1	251.7	253.2	254.6	252.6	250.8	248.7	247.0	244.7	243.7	242.0
80°	221.3	224.1	227.3	230.1	226.5	222.8	219.3	216.7	213.5	212.2	210.2
82.5°	183.5	186.4	188.3	190.1	187.5	184.9	181.5	179.2	175.8	174.5	172.2
85°	139.5	143.0	144.1	145.1	143.5	142.1	138.8	134.4	132.4	129.0	127.3
87.5°	91.7	93.8	94.3	94.6	93.5	92.9	90.8	88.8	85.2	82.5	79.3
90°	47.3	47.9	46.3	46.1	45.6	46.5	45.1	45.1	42.9	42.5	40.4
92.5°	18.1	16.9	15.7	14.6	15.9	16.9	18.2	19.1	20.2	21.2	22.5
95°	24.7	23.5	22.2	20.9	21.9	22.9	23.9	25.0	26.0	27.0	28.0
97.5°	34.3	33.4	32.5	31.7	32.2	32.9	33.4	34.1	34.7	35.3	36.0
100°	44.0	43.3	42.6	41.9	41.9	41.9	41.9	41.9	41.9	41.9	41.9
102.5°	71.6	68.7	65.8	62.9	64.8	66.8	68.8	70.7	72.8	74.7	76.8
105°	137.0	129.0	121.0	113.1	120.8	128.5	136.2	143.9	151.6	159.4	167.1
107.5°	250.4	237.8	225.3	212.7	226.8	240.7	254.8	268.8	282.8	296.8	311.0
110°	375.2	363.2	351.2	339.2	354.1	369.0	383.9	398.8	413.7	428.6	443.6



TEST NUMBER: P1444787  
 CATALOG NUMBER: EHBR1-12-UNV-TA-L940-UPL15

**CANDELA DISTRIBUTION (continued):**

	82.5°	85°	87.5°	90°	92.5°	95°	97.5°	100°	102.5°	105°	107.5°
112.5°	458.5	452.7	446.8	441.0	450.6	460.2	469.8	479.5	489.0	498.7	508.3
115°	480.2	479.8	479.5	479.1	483.7	488.3	492.7	497.3	502.0	506.5	511.1
117.5°	453.6	456.9	460.1	463.4	464.9	466.3	467.8	469.2	470.8	472.2	473.7
120°	406.2	410.4	414.8	419.1	418.6	417.9	417.4	416.8	416.4	415.8	415.4
122.5°	350.6	354.9	359.2	363.6	362.3	361.0	359.8	358.5	357.4	356.1	355.1
125°	298.9	302.4	306.0	309.7	308.4	307.1	305.9	304.6	303.4	302.2	301.2
127.5°	257.7	259.9	262.2	264.4	263.8	263.2	262.7	262.2	261.7	261.1	260.8
130°	229.5	230.5	231.5	232.5	232.7	232.9	233.1	233.4	233.7	234.0	234.3
132.5°	212.5	212.7	212.9	213.2	213.8	214.6	215.3	216.1	217.0	217.8	218.8
135°	202.5	202.3	202.1	201.9	202.9	203.9	205.0	206.1	207.3	208.5	209.8
137.5°	197.2	196.9	196.5	196.1	197.1	198.2	199.3	200.3	201.6	202.8	204.1
140°	194.5	194.2	194.1	193.7	194.7	195.7	196.8	197.9	199.1	200.3	201.5
142.5°	192.2	191.8	191.5	191.3	192.2	193.1	194.2	195.1	196.3	197.3	198.4
145°	191.9	191.6	191.5	191.3	191.8	192.6	193.3	194.1	194.9	195.6	196.5
147.5°	190.1	189.9	189.8	189.7	190.2	190.7	191.3	191.7	192.4	192.9	193.7
150°	187.4	187.3	187.2	187.3	187.5	187.8	188.2	188.6	188.9	189.3	189.9
152.5°	183.2	183.1	183.2	183.2	183.4	183.7	184.1	184.4	184.7	185.1	185.6
155°	180.0	179.8	179.7	179.6	179.7	179.9	180.1	180.2	180.3	180.5	180.6
157.5°	177.9	177.8	177.8	177.6	177.6	177.6	177.7	177.7	177.7	177.7	177.8
160°	176.1	175.8	175.5	175.3	175.4	175.5	175.6	175.6	175.8	175.9	175.9
162.5°	175.7	175.5	175.4	175.2	175.2	175.1	175.0	174.9	174.8	174.7	174.7
165°	175.1	174.9	174.7	174.4	174.4	174.4	174.4	174.4	174.4	174.4	174.4
167.5°	176.0	175.7	175.5	175.2	175.1	174.9	174.8	174.5	174.5	174.3	174.2
170°	175.9	175.7	175.5	175.3	175.2	175.1	175.1	175.0	175.0	175.0	175.0
172.5°	177.3	177.1	176.9	176.7	176.6	176.6	176.5	176.5	176.5	176.5	176.5
175°	178.0	178.0	177.9	177.9	177.8	177.7	177.6	177.5	177.4	177.2	177.1
177.5°	178.3	178.1	178.0	177.9	177.9	177.9	177.9	177.9	177.9	177.9	177.9
180°	178.0	178.0	178.0	178.0	178.0	178.0	178.0	178.0	178.0	178.0	178.0



TEST NUMBER: P1444787  
 CATALOG NUMBER: EHBR1-12-UNV-TA-L940-UPL15

**CANDELA DISTRIBUTION (continued):**

	110°	112.5°	115°	117.5°	120°	122.5°	125°	127.5°	130°	132.5°	135°
0°	9875.3	9875.3	9875.3	9875.3	9875.3	9875.3	9875.3	9875.3	9875.3	9875.3	9875.3
2.5°	9880.8	9878.1	9871.3	9867.9	9861.6	9858.4	9853.5	9850.3	9846.3	9843.3	9841.8
5°	10154.5	10141.9	10116.6	10101.0	10073.6	10055.6	10028.4	10008.6	9980.5	9959.9	9933.3
7.5°	10510.6	10491.3	10458.8	10434.2	10396.0	10366.8	10323.8	10289.5	10242.0	10202.7	10154.3
10°	10655.7	10644.3	10629.8	10614.0	10592.8	10572.0	10542.7	10512.9	10473.0	10433.4	10381.7
12.5°	10441.3	10452.0	10473.0	10482.8	10498.9	10504.3	10511.7	10508.2	10501.8	10485.6	10462.1
15°	9834.4	9878.8	9949.1	9997.7	10065.8	10113.7	10176.9	10217.6	10264.6	10292.6	10319.3
17.5°	8835.9	8921.9	9045.9	9144.8	9277.6	9385.6	9517.9	9621.8	9741.8	9833.9	9931.9
20°	7556.9	7677.4	7848.6	7994.0	8186.4	8349.6	8558.7	8733.8	8938.0	9108.3	9292.1
22.5°	6180.5	6322.1	6518.4	6693.7	6923.4	7128.7	7390.7	7622.3	7898.4	8145.8	8419.5
25°	4882.0	5020.8	5220.7	5402.1	5650.2	5876.4	6162.6	6428.2	6748.7	7047.5	7390.7
27.5°	3768.4	3891.8	4067.4	4230.8	4458.0	4680.0	4970.4	5253.6	5595.6	5916.9	6286.7
30°	2910.3	3010.3	3151.1	3282.6	3465.0	3646.5	3905.2	4167.2	4507.4	4840.3	5219.4
32.5°	2255.4	2340.7	2458.1	2564.9	2705.4	2842.4	3032.8	3242.1	3540.6	3859.4	4226.0
35°	1745.9	1818.9	1918.9	2010.9	2126.4	2235.0	2377.2	2526.6	2754.4	3022.6	3350.7
37.5°	1392.0	1421.7	1493.1	1568.3	1664.4	1753.6	1864.9	1975.4	2138.3	2349.9	2617.9
40°	1058.5	1105.8	1163.9	1223.3	1295.9	1367.6	1489.5	1548.2	1655.5	1807.5	2015.4
42.5°	854.1	887.3	928.2	969.5	1020.2	1070.0	1131.7	1194.6	1274.8	1377.6	1525.6
45°	714.8	736.4	762.7	790.2	823.5	857.6	898.9	942.0	996.4	1059.7	1149.5
47.5°	621.6	633.6	650.8	669.6	692.4	716.0	742.8	770.3	804.1	841.6	892.8
50°	548.9	558.9	572.3	584.9	600.6	624.8	635.4	650.6	670.9	693.0	721.6
52.5°	496.4	503.0	511.4	518.6	528.5	537.6	549.5	559.9	574.0	587.2	605.8
55°	455.4	457.8	462.6	467.2	474.1	480.3	488.4	495.3	504.2	512.1	523.8
57.5°	423.8	424.0	426.2	428.7	433.0	436.9	442.5	447.0	453.2	458.3	465.3
60°	401.1	399.9	400.3	401.2	403.6	406.1	409.7	412.6	416.5	419.4	423.3
62.5°	382.2	380.2	379.8	379.6	380.9	381.7	383.7	385.0	387.3	388.6	390.6
65°	358.2	356.0	355.1	354.1	354.5	354.2	354.9	355.0	356.1	356.4	357.6
67.5°	336.6	334.7	333.5	332.1	331.6	330.5	330.1	329.2	329.1	328.2	328.0
70°	316.8	315.0	314.1	312.8	312.1	310.8	310.0	308.4	307.3	305.9	305.0
72.5°	293.9	292.9	292.6	291.7	291.5	290.8	290.5	289.3	288.6	287.4	286.7
75°	270.0	269.2	269.2	268.2	268.1	267.3	267.1	265.9	265.2	263.9	263.4
77.5°	241.6	240.3	239.9	238.9	239.2	238.8	239.1	238.2	237.8	236.5	236.1
80°	209.5	207.9	207.2	205.9	206.3	205.6	206.3	206.2	206.6	205.6	205.4
82.5°	171.5	169.7	169.4	168.4	169.1	169.2	170.5	169.7	170.1	169.1	169.6
85°	124.8	123.4	121.7	121.4	120.2	121.4	119.9	120.9	119.2	120.4	118.8
87.5°	77.3	74.6	73.2	71.3	70.5	68.7	67.9	66.6	67.0	66.3	66.7
90°	40.6	38.9	39.7	38.8	39.9	39.3	40.6	40.6	42.2	42.0	43.7
92.5°	23.5	24.6	26.6	28.8	30.7	32.8	34.8	37.0	38.9	41.1	43.0
95°	29.1	30.1	32.8	35.6	38.3	41.0	43.9	46.6	49.3	52.1	54.8
97.5°	36.6	37.2	39.9	42.7	45.4	48.2	50.9	53.8	56.5	59.3	62.0
100°	41.9	42.0	49.8	57.6	65.4	73.1	81.0	88.7	96.6	104.3	112.2
102.5°	78.7	80.7	100.3	120.0	139.7	159.4	179.2	198.8	218.6	238.3	258.0
105°	174.8	182.5	212.5	242.7	272.7	302.8	332.8	363.0	393.0	423.2	453.2
107.5°	325.0	339.0	366.2	393.3	420.5	447.7	475.0	502.1	529.4	556.5	583.8
110°	458.5	473.4	491.6	509.7	528.0	546.2	564.3	582.6	600.8	619.0	637.3



TEST NUMBER: P1444787  
 CATALOG NUMBER: EHBR1-12-UNV-TA-L940-UPL15

**CANDELA DISTRIBUTION (continued):**

	110°	112.5°	115°	117.5°	120°	122.5°	125°	127.5°	130°	132.5°	135°
112.5°	517.9	527.6	538.1	548.7	559.4	570.0	580.6	591.2	601.9	612.6	623.3
115°	515.7	520.3	524.3	528.5	532.6	536.7	541.0	545.2	549.4	553.5	557.7
117.5°	475.2	476.8	477.5	478.1	478.8	479.4	480.2	480.8	481.6	482.3	483.0
120°	414.8	414.3	413.7	413.0	412.3	411.6	410.9	410.4	409.6	409.1	408.5
122.5°	353.8	352.7	352.0	351.4	350.7	350.1	349.6	349.0	348.3	347.8	347.2
125°	300.1	299.0	299.5	300.1	300.7	301.4	301.9	302.7	303.3	303.9	304.6
127.5°	260.3	260.0	261.5	263.2	264.7	266.3	267.9	269.6	271.1	272.8	274.4
130°	234.8	235.1	237.1	239.2	241.2	243.3	245.4	247.5	249.5	251.6	253.7
132.5°	219.7	220.7	222.5	224.5	226.5	228.5	230.5	232.5	234.4	236.5	238.4
135°	211.0	212.3	214.2	215.9	217.7	219.6	221.4	223.2	225.0	226.9	228.6
137.5°	205.3	206.6	208.1	209.5	210.9	212.5	213.8	215.3	216.7	218.2	219.6
140°	202.7	204.1	204.9	205.7	206.5	207.4	208.2	209.1	209.8	210.6	211.5
142.5°	199.6	200.8	201.2	201.9	202.3	202.9	203.5	204.0	204.4	205.0	205.5
145°	197.3	198.3	198.3	198.3	198.4	198.5	198.5	198.6	198.6	198.7	198.7
147.5°	194.2	195.0	194.8	194.8	194.8	194.6	194.5	194.4	194.3	194.2	194.2
150°	190.1	190.7	190.4	190.3	190.1	189.8	189.6	189.3	189.0	188.9	188.7
152.5°	185.9	186.3	186.0	185.8	185.5	185.2	184.9	184.7	184.4	184.1	183.9
155°	180.8	181.0	180.8	180.7	180.6	180.4	180.3	180.2	180.1	179.9	179.8
157.5°	177.8	177.9	177.8	177.7	177.5	177.5	177.5	177.4	177.4	177.4	177.4
160°	176.0	176.2	176.0	175.9	175.8	175.7	175.7	175.7	175.7	175.7	175.7
162.5°	174.6	174.5	174.4	174.3	174.2	174.1	174.2	174.2	174.1	174.1	174.1
165°	174.5	174.6	174.3	174.2	174.0	173.8	173.8	173.8	173.7	173.6	173.5
167.5°	174.0	173.9	173.9	174.0	174.0	174.0	174.1	174.2	174.3	174.4	174.5
170°	174.9	175.0	174.8	174.8	174.7	174.6	174.5	174.5	174.5	174.4	174.4
172.5°	176.5	176.5	176.3	176.1	175.9	175.7	175.6	175.5	175.3	175.1	175.0
175°	177.0	176.9	176.8	176.7	176.6	176.5	176.5	176.4	176.3	176.2	176.1
177.5°	177.9	177.8	177.7	177.7	177.7	177.7	177.7	177.6	177.6	177.6	177.5
180°	178.0	178.0	178.0	178.0	178.0	178.0	178.0	178.0	178.0	178.0	178.0



TEST NUMBER: P1444787  
 CATALOG NUMBER: EHBR1-12-UNV-TA-L940-UPL15

**CANDELA DISTRIBUTION (continued):**

	137.5°	140°	142.5°	145°	147.5°	150°	152.5°	155°	157.5°	160°	162.5°
0°	9875.3	9875.3	9875.3	9875.3	9875.3	9875.3	9875.3	9875.3	9875.3	9875.3	9875.3
2.5°	9839.9	9839.7	9838.7	9839.2	9839.4	9840.0	9840.9	9841.8	9842.0	9842.6	9842.8
5°	9913.5	9889.1	9871.1	9851.3	9836.4	9823.0	9814.0	9807.0	9804.3	9804.9	9806.6
7.5°	10113.1	10062.9	10021.4	9974.3	9935.0	9893.3	9858.9	9826.1	9802.1	9784.3	9774.4
10°	10332.2	10271.0	10212.5	10144.3	10079.6	10010.5	9947.9	9884.9	9832.5	9786.8	9753.4
12.5°	10429.5	10386.3	10335.6	10271.2	10202.0	10122.3	10041.8	9955.6	9875.3	9800.9	9740.8
15°	10326.5	10326.6	10308.2	10277.3	10229.2	10165.6	10088.8	9998.9	9904.2	9807.7	9719.5
17.5°	9999.7	10061.4	10095.7	10117.4	10110.7	10087.3	10038.5	9969.4	9881.2	9778.3	9670.6
20°	9438.5	9583.9	9687.6	9780.9	9833.1	9867.9	9864.4	9836.2	9773.4	9685.9	9573.8
22.5°	8652.3	8896.4	9088.9	9268.7	9394.6	9497.1	9545.8	9566.4	9538.0	9477.1	9371.8
25°	7697.3	8029.2	8312.5	8587.3	8793.5	8970.8	9077.3	9152.3	9158.3	9126.4	9032.5
27.5°	6636.2	7028.0	7386.5	7751.9	8041.8	8296.6	8463.7	8586.0	8624.9	8619.8	8534.4
30°	5576.5	5987.8	6382.9	6808.9	7167.7	7493.2	7714.0	7879.5	7943.2	7955.4	7873.4
32.5°	4575.6	4981.2	5375.2	5820.6	6215.5	6588.5	6849.4	7045.9	7120.1	7137.5	7047.5
35°	3667.3	4041.5	4416.0	4847.6	5240.2	5626.5	5901.3	6107.1	6176.3	6188.1	6083.8
37.5°	2879.6	3198.4	3524.7	3912.1	4272.5	4635.3	4896.5	5089.9	5140.4	5137.2	5019.3
40°	2216.4	2464.2	2726.5	3045.3	3345.1	3651.7	3872.2	4032.1	4058.6	4039.0	3915.1
42.5°	1666.6	1845.6	2035.7	2273.7	2496.2	2725.6	2886.1	3004.7	3008.6	2977.5	2866.3
45°	1241.6	1416.3	1495.9	1639.9	1783.2	1935.8	2033.7	2107.0	2095.7	2068.3	1983.8
47.5°	946.6	1013.6	1084.8	1174.1	1257.5	1430.7	1417.9	1535.5	1450.8	1508.6	1381.4
50°	751.7	789.1	827.5	874.9	918.4	963.7	992.0	1013.2	1010.4	1001.3	976.9
52.5°	639.5	651.0	669.9	696.9	721.2	745.7	761.8	774.9	775.1	771.5	759.2
55°	534.5	549.2	562.7	580.3	610.3	615.0	638.0	633.3	635.2	628.8	635.3
57.5°	471.2	479.8	487.4	497.9	506.5	516.7	522.7	528.3	527.9	526.6	520.3
60°	426.4	431.2	435.4	441.5	446.3	451.9	454.7	457.6	456.7	454.5	449.0
62.5°	391.9	394.8	397.3	401.2	404.1	407.6	409.1	410.3	409.1	407.0	402.1
65°	357.8	359.7	361.2	364.2	366.2	369.3	370.5	371.6	370.5	368.9	365.2
67.5°	327.0	327.2	327.1	328.3	328.9	330.7	331.3	332.1	330.8	329.4	326.3
70°	303.7	303.3	302.7	303.2	303.3	304.2	304.3	304.2	302.6	300.2	296.7
72.5°	285.5	285.3	284.8	285.2	285.2	286.0	285.7	285.4	283.4	281.2	277.7
75°	262.1	261.9	261.0	261.0	260.3	260.6	259.6	259.1	256.9	255.0	251.9
77.5°	234.7	234.2	232.9	232.4	231.0	230.5	228.7	227.8	225.6	224.1	221.5
80°	204.0	203.6	202.0	201.0	198.8	197.4	194.8	193.3	190.8	189.3	186.7
82.5°	168.7	168.9	167.2	166.1	162.9	160.5	157.0	155.1	152.3	150.8	148.2
85°	120.0	118.2	119.2	119.1	117.1	115.1	112.2	110.1	107.8	106.4	104.5
87.5°	65.8	66.2	65.8	65.3	63.9	62.9	60.7	59.4	57.8	56.9	55.5
90°	40.7	39.5	36.5	35.4	32.5	30.7	27.6	26.0	23.0	22.4	20.6
92.5°	40.7	38.4	36.2	33.8	31.6	29.3	27.0	24.7	22.4	21.5	20.9
95°	51.4	48.1	44.8	41.5	38.1	34.8	31.5	28.1	24.8	24.1	23.4
97.5°	58.0	54.1	50.1	46.2	42.3	38.4	34.5	30.6	26.6	26.2	25.8
100°	103.1	94.1	85.1	76.0	66.9	57.9	48.9	39.8	30.7	30.2	29.7
102.5°	236.0	214.1	192.1	170.1	148.2	126.2	104.3	82.3	60.4	57.2	54.0
105°	420.0	386.6	353.5	320.3	286.9	253.7	220.5	187.2	154.0	143.3	132.6
107.5°	552.5	521.3	490.0	458.7	427.4	396.2	364.9	333.6	302.3	283.6	264.8
110°	612.5	587.7	562.9	538.1	513.3	488.6	463.6	438.8	414.0	397.7	381.7



TEST NUMBER: P1444787  
 CATALOG NUMBER: EHBR1-12-UNV-TA-L940-UPL15

**CANDELA DISTRIBUTION (continued):**

	137.5°	140°	142.5°	145°	147.5°	150°	152.5°	155°	157.5°	160°	162.5°
112.5°	605.0	586.8	568.7	550.5	532.3	514.1	495.9	477.7	459.5	449.6	439.8
115°	546.8	535.8	524.9	513.8	502.9	491.8	480.9	469.8	458.8	453.6	448.4
117.5°	477.5	471.8	466.2	460.5	454.9	449.2	443.6	437.9	432.3	430.5	428.7
120°	406.8	405.1	403.3	401.6	399.8	398.0	396.2	394.5	392.7	392.9	393.1
122.5°	347.9	348.4	349.1	349.6	350.2	350.8	351.4	351.9	352.4	353.7	355.1
125°	306.2	307.8	309.3	310.9	312.4	314.0	315.5	316.9	318.5	319.8	321.2
127.5°	276.2	277.9	279.8	281.5	283.2	285.0	286.8	288.3	290.1	291.3	292.6
130°	255.3	256.8	258.2	259.6	261.2	262.7	264.1	265.6	267.1	268.0	269.0
132.5°	239.7	241.1	242.5	243.7	245.1	246.4	247.8	249.1	250.5	251.2	251.8
135°	229.7	230.6	231.6	232.5	233.7	234.5	235.5	236.6	237.6	238.0	238.5
137.5°	220.5	221.2	222.1	222.8	223.7	224.4	225.4	226.1	227.0	227.1	227.4
140°	212.3	213.3	214.0	214.8	215.8	216.6	217.5	218.5	219.4	219.6	219.8
142.5°	206.2	206.7	207.5	208.0	208.9	209.4	210.2	210.9	211.7	211.9	212.0
145°	199.5	200.3	201.0	201.9	202.7	203.6	204.5	205.4	206.4	206.4	206.5
147.5°	194.7	195.5	196.1	196.9	197.6	198.3	199.1	199.9	200.8	200.8	201.0
150°	189.4	190.1	190.8	191.6	192.4	193.3	194.1	195.0	195.9	196.1	196.3
152.5°	184.7	185.5	186.2	187.1	188.0	188.9	189.9	190.8	191.7	191.9	192.2
155°	180.6	181.4	182.2	183.2	184.0	184.9	185.9	186.8	187.7	188.0	188.3
157.5°	178.0	178.8	179.5	180.4	181.1	182.0	182.8	183.6	184.4	184.7	184.8
160°	176.5	177.0	177.8	178.4	179.2	179.8	180.6	181.2	182.0	182.2	182.4
162.5°	174.9	175.5	176.3	176.8	177.6	178.2	179.0	179.6	180.4	180.6	180.8
165°	174.0	174.4	175.0	175.4	175.9	176.5	177.0	177.4	178.0	178.2	178.5
167.5°	175.0	175.2	175.6	176.0	176.5	176.8	177.2	177.6	178.0	178.3	178.5
170°	174.8	175.1	175.3	175.8	176.2	176.5	176.8	177.2	177.7	177.9	178.1
172.5°	175.2	175.4	175.7	176.0	176.1	176.4	176.6	176.9	177.2	177.5	177.7
175°	176.2	176.3	176.5	176.5	176.5	176.7	176.8	177.0	177.2	177.4	177.6
177.5°	177.6	177.7	177.8	177.9	178.0	178.1	178.3	178.4	178.5	178.8	179.0
180°	178.0	178.0	178.0	178.0	178.0	178.0	178.0	178.0	178.0	178.0	178.0



TEST NUMBER: P1444787  
 CATALOG NUMBER: EHBR1-12-UNV-TA-L940-UPL15

**CANDELA DISTRIBUTION (continued):**

	165°	167.5°	170°	172.5°	175°	177.5°	180°	182.5°	185°	187.5°	190°
0°	9875.3	9875.3	9875.3	9875.3	9875.3	9875.3	9875.3	9875.3	9875.3	9875.3	9875.3
2.5°	9842.5	9842.4	9842.1	9841.6	9841.2	9841.4	9841.9	9843.0	9845.0	9847.9	9851.6
5°	9807.9	9809.9	9811.1	9811.3	9810.2	9809.6	9810.5	9813.2	9818.7	9827.8	9840.2
7.5°	9771.8	9774.2	9778.0	9780.9	9781.4	9780.7	9780.9	9785.1	9795.1	9813.0	9838.0
10°	9733.0	9725.6	9729.5	9736.6	9742.3	9743.3	9744.0	9749.0	9763.7	9790.7	9830.8
12.5°	9697.3	9674.0	9669.5	9675.9	9684.5	9687.3	9686.5	9688.6	9705.9	9741.5	9797.5
15°	9650.3	9606.5	9591.6	9593.2	9603.8	9607.6	9604.8	9600.5	9617.4	9660.9	9733.3
17.5°	9574.2	9503.6	9476.1	9474.9	9487.2	9490.6	9483.8	9470.5	9487.1	9541.4	9631.4
20°	9458.6	9354.4	9302.6	9294.3	9307.7	9303.8	9290.3	9270.3	9292.0	9358.1	9465.1
22.5°	9250.8	9118.7	9030.2	9001.6	9017.7	9007.0	8987.1	8961.7	8990.6	9065.6	9184.7
25°	8911.2	8758.5	8637.3	8569.3	8582.1	8562.8	8541.3	8510.5	8545.0	8631.0	8762.1
27.5°	8411.9	8235.7	8085.4	7972.8	7976.9	7951.8	7927.0	7887.1	7930.1	8032.0	8179.8
30°	7748.1	7544.1	7361.1	7208.1	7194.4	7170.0	7144.6	7092.3	7146.1	7268.1	7440.9
32.5°	6914.5	6687.9	6476.5	6283.1	6246.7	6222.8	6200.2	6139.9	6210.3	6352.6	6551.1
35°	5939.5	5698.2	5469.0	5248.1	5187.7	5163.8	5144.1	5086.3	5174.3	5329.1	5543.5
37.5°	4869.4	4622.9	4395.4	4168.8	4083.4	4051.1	4036.7	3998.9	4100.4	4253.4	4468.7
40°	3770.8	3541.7	3337.6	3137.6	3040.1	2990.7	2983.2	2976.3	3074.3	3207.2	3402.6
42.5°	2743.1	2558.2	2400.9	2248.0	2159.7	2092.2	2092.2	2112.7	2200.9	2300.4	2451.2
45°	1897.5	1773.4	1673.2	1571.0	1598.3	1463.7	1542.8	1502.2	1545.8	1610.0	1708.0
47.5°	1304.4	1236.6	1181.6	1124.5	1082.9	1043.1	1046.6	1072.2	1113.3	1151.3	1202.4
50°	950.7	916.2	888.1	858.5	837.7	820.2	821.2	832.3	853.9	874.0	900.6
52.5°	744.9	725.8	710.7	694.3	683.4	674.7	675.2	680.6	692.2	703.7	719.0
55°	614.0	611.7	591.9	577.2	571.6	565.7	566.8	568.9	576.9	583.5	593.6
57.5°	514.5	505.6	499.6	491.9	488.4	484.3	485.2	486.0	491.3	495.8	503.1
60°	444.3	438.0	433.8	428.5	426.1	423.5	424.2	424.6	428.0	431.0	436.2
62.5°	397.6	391.9	388.3	384.2	382.6	380.9	381.2	381.4	383.6	385.7	389.6
65°	361.9	357.4	354.3	350.8	349.1	347.2	347.4	347.4	349.3	350.8	353.7
67.5°	323.9	320.6	318.6	315.8	314.7	312.8	312.8	312.2	313.4	314.0	316.0
70°	293.6	290.2	287.7	285.0	283.5	281.9	281.9	281.9	283.3	284.7	287.3
72.5°	274.8	271.6	269.3	267.0	265.6	264.2	263.9	263.8	264.8	265.5	267.3
75°	250.0	247.4	246.0	243.9	242.8	241.2	240.9	240.2	240.6	240.8	242.1
77.5°	219.8	217.4	216.3	214.1	213.2	211.4	211.2	210.4	210.7	210.6	211.5
80°	185.5	183.3	182.6	180.8	180.4	178.7	178.4	177.5	177.8	177.0	177.4
82.5°	147.1	145.1	144.6	142.9	142.9	141.4	141.3	139.8	139.8	138.5	136.5
85°	103.6	102.1	101.5	100.1	99.7	98.5	97.8	96.4	96.0	95.0	94.7
87.5°	54.7	53.8	52.9	52.3	51.1	48.8	48.6	47.1	47.3	46.2	46.3
90°	20.0	18.4	17.9	16.3	15.7	14.5	14.1	14.3	14.9	15.3	15.8
92.5°	20.0	19.3	18.5	17.8	17.0	16.2	15.5	16.2	17.0	17.8	18.5
95°	22.7	22.1	21.3	20.7	20.0	19.3	18.6	19.3	20.0	20.8	21.4
97.5°	25.3	24.9	24.5	24.0	23.6	23.2	22.7	23.2	23.6	24.0	24.5
100°	29.2	28.7	28.1	27.7	27.1	26.6	26.1	26.7	27.2	27.8	28.2
102.5°	50.9	47.7	44.5	41.4	38.2	35.0	31.9	35.0	38.2	41.5	44.6
105°	122.0	111.2	100.5	89.8	79.2	68.5	57.8	68.6	79.3	89.9	100.6
107.5°	246.0	227.2	208.4	189.6	170.8	152.0	133.1	152.0	170.9	189.7	208.5
110°	365.4	349.2	332.9	316.8	300.5	284.2	267.9	284.2	300.5	316.8	333.0



TEST NUMBER: P1444787  
 CATALOG NUMBER: EHBR1-12-UNV-TA-L940-UPL15

**CANDELA DISTRIBUTION (continued):**

	165°	167.5°	170°	172.5°	175°	177.5°	180°	182.5°	185°	187.5°	190°
112.5°	429.9	420.1	410.1	400.3	390.4	380.6	370.6	380.6	390.5	400.5	410.3
115°	443.2	438.0	432.8	427.6	422.3	417.1	411.8	417.2	422.5	427.8	433.1
117.5°	426.8	424.9	423.1	421.2	419.3	417.5	415.5	417.6	419.5	421.5	423.4
120°	393.2	393.3	393.5	393.6	393.8	393.9	394.0	394.0	394.0	394.0	394.0
122.5°	356.4	357.8	359.0	360.3	361.6	362.9	364.0	363.0	361.9	360.8	359.6
125°	322.5	324.0	325.3	326.6	327.8	329.2	330.4	329.4	328.3	327.2	326.0
127.5°	293.7	295.0	296.2	297.5	298.5	299.6	300.6	299.8	298.9	297.9	297.0
130°	269.8	270.8	271.6	272.6	273.3	274.2	274.8	274.4	273.7	273.3	272.4
132.5°	252.5	253.2	253.8	254.4	255.0	255.6	256.0	255.7	255.5	255.1	254.6
135°	239.0	239.3	239.7	240.1	240.5	240.7	240.9	241.0	240.9	240.8	240.6
137.5°	227.6	227.8	228.0	228.1	228.2	228.2	228.2	228.4	228.6	228.9	229.0
140°	220.0	220.2	220.3	220.4	220.7	220.7	220.6	221.0	221.2	221.3	221.4
142.5°	212.3	212.5	212.7	212.8	213.0	213.0	213.0	213.3	213.4	213.5	213.6
145°	206.6	206.7	206.7	206.8	206.8	206.7	206.5	207.0	207.3	207.5	207.8
147.5°	201.0	201.0	201.1	201.1	201.0	201.1	201.0	201.3	201.5	201.8	202.1
150°	196.6	196.8	197.0	197.2	197.3	197.4	197.4	197.6	197.8	197.9	198.0
152.5°	192.3	192.5	192.8	192.9	193.0	193.0	193.0	193.3	193.5	193.7	193.8
155°	188.5	188.8	188.9	189.1	189.3	189.5	189.7	189.8	189.9	190.0	190.1
157.5°	185.0	185.3	185.5	185.7	185.9	186.0	186.2	186.4	186.5	186.7	186.7
160°	182.6	182.9	183.0	183.3	183.4	183.6	183.7	183.9	184.1	184.2	184.3
162.5°	181.0	181.2	181.3	181.6	181.7	181.9	182.0	182.2	182.4	182.5	182.6
165°	178.8	179.1	179.2	179.5	179.8	180.1	180.3	180.4	180.4	180.5	180.5
167.5°	178.8	179.1	179.2	179.4	179.6	179.9	180.1	180.2	180.2	180.2	180.3
170°	178.3	178.5	178.7	178.9	179.2	179.3	179.5	179.5	179.5	179.6	179.6
172.5°	177.9	178.2	178.5	178.8	179.0	179.2	179.5	179.5	179.3	179.3	179.2
175°	177.9	178.1	178.2	178.5	178.7	179.0	179.2	179.1	179.1	178.9	178.8
177.5°	179.3	179.7	179.9	180.2	180.5	180.6	181.0	180.7	180.6	180.4	180.1
180°	178.0	178.0	178.0	178.0	178.0	178.0	178.0	178.0	178.0	178.0	178.0



TEST NUMBER: P1444787  
 CATALOG NUMBER: EHBR1-12-UNV-TA-L940-UPL15

**CANDELA DISTRIBUTION (continued):**

	192.5°	195°	197.5°	200°	202.5°	205°	207.5°	210°	212.5°	215°	217.5°
0°	9875.3	9875.3	9875.3	9875.3	9875.3	9875.3	9875.3	9875.3	9875.3	9875.3	9875.3
2.5°	9856.8	9861.7	9869.3	9876.2	9886.4	9894.5	9906.7	9916.0	9929.8	9938.7	9953.7
5°	9857.7	9877.0	9902.4	9927.1	9956.9	9983.9	10017.4	10046.0	10079.8	10107.2	10141.8
7.5°	9871.6	9908.9	9953.4	9998.3	10049.1	10096.6	10150.2	10198.6	10251.5	10296.5	10345.4
10°	9882.0	9939.3	10004.9	10071.1	10140.7	10205.3	10270.6	10326.9	10379.6	10423.1	10461.4
12.5°	9868.0	9947.0	10031.3	10112.7	10190.1	10257.0	10313.1	10356.5	10386.5	10406.8	10411.5
15°	9820.6	9915.7	10007.4	10088.4	10152.6	10202.1	10227.7	10239.7	10226.9	10205.4	10158.5
17.5°	9732.1	9832.3	9914.3	9978.2	10012.1	10025.6	10004.4	9967.4	9895.3	9815.2	9699.5
20°	9569.8	9663.2	9722.7	9757.5	9748.5	9714.8	9634.7	9537.3	9393.2	9239.6	9037.0
22.5°	9285.1	9366.8	9398.4	9401.0	9345.6	9261.6	9117.0	8949.9	8722.6	8486.3	8195.7
25°	8857.7	8929.3	8934.3	8906.2	8804.8	8668.6	8456.4	8219.9	7911.1	7596.2	7232.0
27.5°	8278.1	8346.7	8329.9	8277.5	8136.8	7954.6	7682.8	7377.4	6996.6	6624.7	6221.8
30°	7549.5	7622.9	7603.2	7535.9	7368.6	7153.2	6833.4	6478.6	6055.8	5658.5	5250.3
32.5°	6677.7	6770.4	6756.8	6692.8	6518.3	6287.8	5940.7	5564.4	5131.9	4740.4	4343.2
35°	5686.6	5799.2	5805.1	5763.3	5601.1	5373.4	5030.7	4666.5	4252.1	3882.8	3515.9
37.5°	4618.9	4749.5	4776.3	4765.0	4630.7	4429.6	4117.4	3790.6	3423.6	3099.9	2786.1
40°	3545.3	3677.5	3723.3	3736.9	3637.8	3482.0	3225.8	2962.1	2662.8	2400.6	2151.4
42.5°	2566.2	2683.3	2727.7	2755.5	2693.7	2589.8	2402.9	2211.4	1992.1	1803.0	1621.6
45°	1782.2	1865.2	1898.9	1926.9	1893.2	1834.6	1716.6	1596.8	1452.1	1328.4	1211.4
47.5°	1246.1	1291.8	1314.1	1327.7	1314.6	1284.0	1219.8	1150.4	1068.7	996.5	927.0
50°	923.6	947.9	959.6	967.4	957.9	941.0	906.2	868.4	823.6	782.7	742.6
52.5°	731.9	745.9	752.8	757.1	751.6	741.2	721.0	698.5	671.6	646.4	633.1
55°	616.7	615.9	631.8	624.2	631.8	614.6	611.1	586.4	564.0	548.4	531.3
57.5°	508.5	515.8	518.8	522.3	520.0	516.9	508.3	499.5	487.7	477.8	467.3
60°	440.2	446.2	449.5	452.9	452.7	451.5	446.5	441.2	434.0	428.0	421.7
62.5°	393.2	398.3	401.6	404.9	405.2	404.7	400.9	397.3	392.2	388.5	384.1
65°	356.1	359.7	361.9	364.6	364.5	363.7	360.4	357.3	353.2	350.6	347.3
67.5°	317.3	320.0	321.8	324.3	324.8	324.9	323.0	321.6	319.6	318.8	317.8
70°	289.7	293.1	295.9	299.1	300.7	301.5	300.7	300.0	298.8	298.3	297.5
72.5°	268.9	271.7	273.9	276.7	278.3	279.4	278.8	278.4	277.4	277.3	276.6
75°	243.0	244.9	246.1	248.3	249.1	250.1	249.7	250.0	249.7	250.4	250.4
77.5°	211.9	213.3	213.8	215.4	215.5	216.8	217.1	218.6	219.7	222.0	223.2
80°	176.7	177.7	177.7	179.2	180.0	182.1	183.2	185.6	186.7	188.8	189.0
82.5°	137.3	136.3	137.3	136.7	138.6	141.1	141.4	143.5	143.9	145.3	144.3
85°	93.9	93.8	93.0	93.1	92.5	92.8	92.4	92.8	92.4	92.5	91.5
87.5°	45.0	45.4	44.4	44.7	43.8	44.3	43.4	44.1	43.0	43.2	41.7
90°	16.3	16.9	17.2	17.9	18.5	20.0	21.4	22.9	24.5	26.0	27.5
92.5°	19.3	20.0	20.9	21.6	22.4	24.7	27.0	29.3	31.7	33.9	36.2
95°	22.2	22.8	23.5	24.3	25.0	28.3	31.7	34.9	38.3	41.6	45.0
97.5°	25.0	25.4	25.9	26.3	26.7	30.7	34.6	38.6	42.5	46.4	50.3
100°	28.8	29.3	29.8	30.4	30.9	40.0	49.1	58.1	67.2	76.2	85.2
102.5°	47.8	51.0	54.1	57.4	60.6	82.5	104.5	126.5	148.4	170.4	192.4
105°	111.3	122.0	132.8	143.5	154.2	187.4	220.8	254.1	287.2	320.6	353.8
107.5°	227.3	246.1	265.1	283.9	302.7	334.0	365.2	396.6	427.9	459.1	490.3
110°	349.4	365.5	381.9	398.1	414.4	439.2	464.1	489.0	513.8	538.7	563.5



TEST NUMBER: P1444787  
 CATALOG NUMBER: EHBR1-12-UNV-TA-L940-UPL15

**CANDELA DISTRIBUTION (continued):**

	192.5°	195°	197.5°	200°	202.5°	205°	207.5°	210°	212.5°	215°	217.5°
112.5°	420.4	430.1	440.1	450.0	460.0	478.2	496.5	514.7	533.0	551.2	569.3
115°	438.3	443.6	448.9	454.1	459.4	470.5	481.6	492.6	503.6	514.5	525.7
117.5°	425.4	427.3	429.2	431.1	432.9	438.6	444.4	450.1	455.9	461.5	467.2
120°	394.0	393.9	393.8	393.6	393.5	395.3	397.3	399.0	400.8	402.8	404.5
122.5°	358.4	357.2	356.0	354.7	353.5	352.9	352.4	351.9	351.4	350.9	350.3
125°	324.8	323.6	322.3	321.0	319.7	318.3	316.8	315.3	313.8	312.3	310.7
127.5°	295.9	294.8	293.7	292.6	291.5	289.7	288.2	286.4	284.7	283.0	281.3
130°	271.9	271.0	270.4	269.3	268.7	267.1	265.7	264.3	262.8	261.4	259.9
132.5°	254.3	253.8	253.2	252.7	252.1	250.8	249.6	248.2	246.9	245.6	244.4
135°	240.6	240.3	240.0	239.7	239.3	238.4	237.4	236.5	235.6	234.6	233.7
137.5°	229.0	229.0	229.0	228.9	228.9	228.1	227.3	226.5	225.8	225.0	224.2
140°	221.5	221.5	221.5	221.4	221.4	220.5	219.7	218.8	218.1	217.2	216.3
142.5°	213.7	213.8	213.7	213.7	213.7	213.0	212.4	211.8	211.2	210.5	209.9
145°	207.9	208.0	208.1	208.1	208.3	207.6	206.7	206.0	205.2	204.4	203.7
147.5°	202.3	202.4	202.5	202.6	202.8	202.2	201.5	200.9	200.2	199.6	199.0
150°	198.0	198.0	198.1	198.1	198.1	197.4	196.7	196.0	195.4	194.6	194.0
152.5°	193.8	193.9	194.0	194.0	194.1	193.4	192.6	191.9	191.2	190.3	189.7
155°	190.1	190.1	190.1	190.1	190.1	189.5	188.8	188.1	187.4	186.7	186.0
157.5°	186.8	186.9	187.0	187.0	187.1	186.5	185.9	185.3	184.7	184.0	183.3
160°	184.4	184.5	184.6	184.7	184.7	184.1	183.7	183.1	182.7	182.0	181.6
162.5°	182.7	182.9	182.9	183.0	183.1	182.5	182.0	181.5	181.0	180.5	180.0
165°	180.6	180.6	180.6	180.5	180.5	180.1	179.9	179.5	179.2	178.8	178.4
167.5°	180.4	180.3	180.3	180.3	180.3	180.0	179.8	179.5	179.2	179.0	178.7
170°	179.7	179.6	179.6	179.6	179.5	179.2	179.1	178.9	178.7	178.3	178.0
172.5°	179.2	179.0	179.0	178.9	178.7	178.5	178.3	178.1	178.0	177.9	177.8
175°	178.7	178.6	178.4	178.3	178.1	178.1	178.0	177.9	177.9	177.9	177.8
177.5°	179.9	179.7	179.4	179.2	179.1	179.0	178.9	178.8	178.8	178.7	178.6
180°	178.0	178.0	178.0	178.0	178.0	178.0	178.0	178.0	178.0	178.0	178.0



TEST NUMBER: P1444787  
 CATALOG NUMBER: EHBR1-12-UNV-TA-L940-UPL15

**CANDELA DISTRIBUTION (continued):**

	220°	222.5°	225°	227.5°	230°	232.5°	235°	237.5°	240°	242.5°	245°
0°	9875.3	9875.3	9875.3	9875.3	9875.3	9875.3	9875.3	9875.3	9875.3	9875.3	9875.3
2.5°	9962.9	9901.4	9893.3	9897.6	9907.9	9911.7	9922.8	9925.8	9937.0	9939.7	9950.4
5°	10168.5	10087.2	10091.2	10110.8	10140.4	10158.0	10187.2	10202.4	10230.1	10242.8	10267.9
7.5°	10385.3	10321.4	10341.4	10374.3	10414.8	10442.8	10477.8	10500.6	10530.7	10549.4	10573.5
10°	10491.7	10474.2	10496.1	10522.1	10545.2	10563.3	10578.1	10589.9	10597.7	10605.0	10608.2
12.5°	10410.8	10437.8	10441.5	10439.0	10423.7	10412.1	10385.8	10368.0	10336.3	10317.0	10279.4
15°	10110.5	10170.0	10137.0	10087.1	10014.1	9953.1	9867.2	9803.1	9713.5	9652.8	9562.9
17.5°	9583.6	9658.6	9572.8	9457.2	9310.3	9184.6	9028.0	8903.8	8748.2	8635.0	8489.7
20°	8841.7	8911.9	8758.7	8567.2	8339.9	8148.5	7923.0	7743.0	7533.4	7377.4	7189.2
22.5°	7918.1	7968.1	7752.1	7494.1	7204.4	6965.4	6695.7	6480.0	6240.6	6062.4	5861.7
25°	6896.2	6909.7	6650.7	6353.4	6030.5	5761.9	5474.0	5247.1	5003.1	4822.4	4625.5
27.5°	5864.8	5845.1	5565.1	5249.8	4910.2	4631.1	4350.2	4137.6	3923.9	3761.1	3591.5
30°	4891.4	4843.4	4552.8	4228.6	3899.1	3648.9	3415.7	3245.0	3075.0	2945.9	2809.7
32.5°	3998.7	3931.1	3648.1	3344.5	3066.8	2873.7	2700.7	2571.6	2434.3	2325.2	2211.0
35°	3208.0	3135.9	2885.3	2627.9	2417.7	2275.4	2139.4	2033.5	1917.0	1824.9	1725.7
37.5°	2529.4	2470.4	2260.5	2057.8	1898.9	1788.6	1677.2	1590.6	1494.3	1453.7	1347.7
40°	1952.7	1911.5	1747.3	1598.0	1478.5	1426.7	1313.7	1232.8	1160.8	1101.5	1043.9
42.5°	1523.1	1508.5	1348.7	1232.3	1148.3	1082.9	1020.0	968.8	919.1	878.2	839.5
45°	1117.8	1106.2	1035.2	968.1	910.8	865.1	822.5	787.4	754.8	727.9	703.4
47.5°	870.4	866.7	825.8	784.2	748.1	718.8	691.1	667.8	646.2	628.2	622.3
50°	708.0	707.5	683.5	657.7	632.0	615.1	597.5	583.7	569.8	559.0	547.6
52.5°	601.5	598.9	582.7	566.8	551.6	540.4	529.2	520.3	511.2	504.5	497.4
55°	517.8	520.6	511.2	501.7	492.2	485.3	477.4	471.5	465.3	461.1	456.8
57.5°	459.7	463.3	458.5	453.1	447.3	442.7	437.2	433.2	429.0	426.3	423.9
60°	417.5	421.4	419.4	416.7	413.1	410.4	406.9	404.7	402.0	400.5	399.1
62.5°	381.6	386.5	385.8	384.6	382.3	380.8	378.8	377.9	376.0	375.4	374.7
65°	345.8	351.3	351.2	350.6	349.4	348.9	347.7	347.5	346.6	346.9	346.9
67.5°	317.6	322.4	323.6	324.3	324.3	324.6	324.5	325.0	325.0	325.6	326.1
70°	297.3	300.7	301.5	302.3	302.5	303.2	303.2	303.6	303.4	304.1	304.2
72.5°	276.8	281.3	282.0	282.7	282.7	283.3	282.9	282.8	282.0	281.8	281.2
75°	251.3	256.9	258.2	259.0	259.1	259.6	258.9	258.3	256.9	256.3	255.3
77.5°	224.5	230.5	231.3	231.6	231.1	231.2	229.7	228.5	226.7	225.9	224.9
80°	189.9	198.5	199.2	198.6	197.3	197.0	195.6	194.5	192.3	191.5	190.6
82.5°	144.5	154.7	156.1	156.7	155.6	155.9	154.4	153.7	151.7	151.3	150.0
85°	91.2	101.4	103.0	102.8	101.7	101.5	100.6	100.9	100.7	101.3	101.5
87.5°	41.9	51.7	54.1	53.4	53.3	52.5	51.0	51.6	52.5	53.1	53.2
90°	29.1	33.4	34.9	33.8	32.0	30.7	28.8	27.9	26.0	25.0	23.3
92.5°	38.5	40.8	43.1	41.1	39.0	37.0	34.9	32.9	30.8	28.8	26.7
95°	48.3	51.5	54.9	52.2	49.3	46.6	43.9	41.1	38.4	35.7	32.9
97.5°	54.3	58.1	62.0	59.3	56.6	53.8	51.0	48.3	45.5	42.8	40.0
100°	94.3	103.3	112.3	104.4	96.7	88.9	81.1	73.2	65.5	57.7	49.9
102.5°	214.3	236.2	258.1	238.4	218.8	198.9	179.2	159.6	139.9	120.1	100.4
105°	387.0	420.2	453.3	423.2	393.2	363.1	333.0	302.9	272.8	242.7	212.6
107.5°	521.7	552.7	583.9	556.7	529.5	502.3	475.0	447.9	420.7	393.4	366.3
110°	588.3	612.8	637.5	619.2	601.1	582.7	564.5	546.3	528.1	509.9	491.7



TEST NUMBER: P1444787  
 CATALOG NUMBER: EHBR1-12-UNV-TA-L940-UPL15

**CANDELA DISTRIBUTION (continued):**

	220°	222.5°	225°	227.5°	230°	232.5°	235°	237.5°	240°	242.5°	245°
112.5°	587.6	605.4	623.5	612.7	602.1	591.5	580.8	570.2	559.5	548.9	538.3
115°	536.6	547.2	558.0	553.8	549.6	545.4	541.2	537.0	532.8	528.7	524.6
117.5°	472.8	477.9	483.4	482.6	481.9	481.1	480.4	479.7	479.1	478.3	477.7
120°	406.3	407.4	409.0	409.5	410.1	410.8	411.4	412.0	412.6	413.3	413.9
122.5°	349.7	348.5	347.7	348.2	348.8	349.4	350.0	350.5	351.1	351.8	352.4
125°	309.3	306.9	305.1	304.5	303.9	303.2	302.5	301.9	301.2	300.5	300.0
127.5°	279.6	277.1	275.0	273.4	271.8	270.2	268.6	266.9	265.3	263.7	262.2
130°	258.5	256.1	254.4	252.4	250.3	248.2	246.1	244.1	241.9	240.0	237.8
132.5°	243.1	240.7	239.2	237.3	235.3	233.4	231.3	229.4	227.4	225.4	223.4
135°	232.7	230.7	229.5	227.6	226.0	224.2	222.3	220.5	218.8	216.9	215.2
137.5°	223.4	221.5	220.5	219.1	217.7	216.2	214.9	213.5	212.1	210.6	209.2
140°	215.6	213.4	212.4	211.7	210.9	210.1	209.3	208.5	207.8	206.9	206.2
142.5°	209.2	207.4	206.5	206.0	205.5	205.1	204.7	204.1	203.6	203.1	202.6
145°	202.9	200.7	199.7	199.7	199.7	199.7	199.7	199.7	199.7	199.6	199.6
147.5°	198.3	196.1	195.2	195.4	195.6	195.6	195.7	195.8	196.0	196.0	196.2
150°	193.2	190.7	189.6	189.9	190.1	190.3	190.7	190.9	191.2	191.5	191.6
152.5°	188.9	186.0	184.7	184.9	185.2	185.5	185.9	186.0	186.4	186.8	187.1
155°	185.2	182.0	180.6	180.7	180.8	181.0	181.1	181.2	181.4	181.6	181.9
157.5°	182.7	179.4	178.2	178.1	178.2	178.2	178.3	178.3	178.4	178.5	178.7
160°	181.0	177.9	176.5	176.5	176.5	176.5	176.5	176.5	176.6	176.7	176.8
162.5°	179.3	176.3	175.0	175.0	175.0	175.0	175.1	174.9	175.0	175.1	175.1
165°	177.9	175.3	174.3	174.3	174.4	174.5	174.6	174.7	174.8	175.0	175.1
167.5°	178.5	176.1	175.2	175.1	175.0	174.9	174.9	174.8	174.8	174.7	174.7
170°	177.8	175.9	175.1	175.1	175.2	175.2	175.2	175.3	175.3	175.4	175.5
172.5°	177.5	176.1	175.6	175.7	175.9	176.1	176.3	176.3	176.5	176.6	176.8
175°	177.7	176.8	176.6	176.6	176.7	176.8	176.9	176.9	177.0	177.1	177.3
177.5°	178.5	178.2	178.0	178.0	178.0	178.0	178.0	178.0	178.0	178.1	178.1
180°	178.0	178.0	178.0	178.0	178.0	178.0	178.0	178.0	178.0	178.0	178.0



TEST NUMBER: P1444787  
 CATALOG NUMBER: EHBR1-12-UNV-TA-L940-UPL15

**CANDELA DISTRIBUTION (continued):**

	247.5°	250°	252.5°	255°	257.5°	260°	262.5°	265°	267.5°	270°	272.5°
0°	9875.3	9875.3	9875.3	9875.3	9875.3	9875.3	9875.3	9875.3	9875.3	9875.3	9875.3
2.5°	9952.5	9964.0	9963.2	9974.0	9973.5	9983.7	9981.7	9990.5	9988.5	9996.0	9991.5
5°	10278.9	10301.0	10308.3	10328.2	10332.3	10350.1	10350.5	10364.7	10363.0	10374.1	10368.2
7.5°	10587.8	10608.4	10618.2	10633.6	10641.3	10654.1	10659.1	10669.7	10672.2	10678.4	10678.2
10°	10613.8	10613.8	10618.5	10616.4	10620.8	10618.2	10623.6	10621.6	10629.4	10627.4	10633.2
12.5°	10263.1	10228.4	10215.6	10184.4	10177.5	10150.7	10152.6	10135.4	10143.7	10133.1	10151.1
15°	9509.4	9428.7	9388.8	9318.6	9296.6	9241.1	9236.6	9199.7	9209.7	9190.4	9218.5
17.5°	8395.7	8268.5	8198.9	8096.3	8055.7	7977.1	7961.4	7914.0	7921.3	7897.5	7931.5
20°	7067.8	6914.2	6826.3	6707.7	6654.8	6561.2	6536.4	6483.3	6490.0	6466.3	6504.7
22.5°	5724.8	5564.0	5464.7	5340.4	5272.9	5184.9	5158.5	5105.2	5108.2	5085.9	5122.9
25°	4490.6	4336.4	4240.0	4127.2	4068.6	3987.9	3960.1	3912.3	3915.0	3896.6	3929.8
27.5°	3473.8	3347.3	3266.6	3172.1	3119.5	3053.2	3026.2	2985.9	2985.7	2972.3	3000.1
30°	2714.6	2609.1	2536.6	2454.2	2404.9	2345.0	2318.9	2282.9	2281.3	2271.7	2293.8
32.5°	2125.5	2031.5	1965.5	1893.0	1848.8	1797.3	1772.6	1743.7	1741.1	1732.4	1750.5
35°	1652.3	1573.2	1516.4	1455.3	1459.9	1384.1	1396.7	1337.8	1321.9	1318.4	1331.9
37.5°	1277.0	1215.8	1169.6	1123.9	1092.9	1061.0	1043.7	1028.3	1026.5	1025.0	1034.4
40°	999.6	956.7	923.2	891.8	870.4	851.0	840.2	831.7	829.6	828.5	834.2
42.5°	808.9	780.1	758.5	739.3	726.3	715.7	709.8	705.1	703.5	703.6	706.9
45°	683.5	665.9	652.0	640.1	631.8	635.5	624.8	630.4	623.0	630.6	625.6
47.5°	601.9	586.9	578.4	569.9	564.9	560.9	561.0	561.1	562.7	562.9	564.6
50°	539.0	530.3	524.3	518.9	516.3	514.2	514.9	515.5	517.1	517.2	518.4
52.5°	492.4	486.7	483.1	479.7	478.6	477.4	477.8	477.7	478.3	478.0	479.0
55°	454.5	451.8	450.6	449.4	449.6	449.2	449.4	448.3	447.6	446.6	447.5
57.5°	423.3	423.0	423.7	424.3	425.7	426.2	426.5	425.1	423.8	422.6	423.3
60°	399.4	400.0	401.8	403.4	405.5	406.4	406.9	406.2	405.3	404.2	404.8
62.5°	375.7	376.7	378.9	380.7	383.1	384.4	385.8	385.9	386.3	385.9	386.3
65°	348.2	349.4	351.4	352.9	355.2	356.4	357.8	358.0	358.9	358.7	359.3
67.5°	327.4	328.4	330.2	331.5	333.5	334.7	336.0	336.0	336.4	336.3	337.0
70°	305.2	305.7	307.3	308.4	310.4	311.6	313.0	313.5	314.4	314.5	315.3
72.5°	281.5	281.3	282.1	282.7	284.2	285.2	287.0	288.1	289.6	289.9	290.5
75°	255.6	255.4	256.5	256.9	258.3	259.2	261.3	262.6	265.1	266.0	265.7
77.5°	225.7	226.2	228.3	229.4	231.1	232.4	235.1	237.2	241.6	243.5	241.6
80°	192.3	192.8	194.9	196.0	198.3	199.7	202.8	205.3	209.2	210.1	209.0
82.5°	151.1	151.3	153.2	154.0	157.0	159.1	163.0	165.0	167.4	167.0	166.8
85°	103.0	104.4	106.9	109.2	112.9	116.4	120.0	123.0	120.9	124.2	120.5
87.5°	55.1	55.0	58.1	57.7	62.8	65.8	68.8	70.3	72.1	71.7	71.7
90°	22.4	21.2	20.9	19.7	19.7	18.3	18.4	17.3	17.6	16.2	18.3
92.5°	24.7	23.6	22.5	21.3	20.2	19.2	18.1	17.0	15.8	14.7	15.8
95°	30.2	29.2	28.1	27.1	26.1	25.1	24.0	23.0	22.0	21.0	22.3
97.5°	37.3	36.7	36.1	35.5	34.8	34.3	33.6	33.1	32.4	31.9	32.7
100°	42.1	42.1	42.1	42.1	42.0	42.0	42.0	42.0	42.0	42.0	42.7
102.5°	80.8	78.8	76.9	74.8	72.9	70.8	68.8	66.9	64.9	63.0	65.9
105°	182.6	174.9	167.2	159.5	151.7	144.0	136.3	128.6	120.9	113.2	121.1
107.5°	339.2	325.1	311.1	297.0	282.9	268.9	254.9	240.8	226.9	212.8	225.4
110°	473.5	458.6	443.6	428.7	413.7	398.9	384.0	369.1	354.2	339.3	351.3



TEST NUMBER: P1444787

CATALOG NUMBER: EHBR1-12-UNV-TA-L940-UPL15

**CANDELA DISTRIBUTION (continued):**

	247.5°	250°	252.5°	255°	257.5°	260°	262.5°	265°	267.5°	270°	272.5°
112.5°	527.7	518.0	508.4	498.7	489.1	479.6	470.0	460.4	450.8	441.2	447.0
115°	520.4	515.9	511.2	506.7	502.1	497.5	492.8	488.4	483.8	479.2	479.6
117.5°	477.0	475.4	473.9	472.3	470.9	469.4	468.0	466.5	465.0	463.6	460.3
120°	414.7	415.0	415.5	416.1	416.5	417.2	417.6	418.1	418.8	419.3	415.0
122.5°	353.0	354.1	355.3	356.4	357.6	358.9	360.1	361.3	362.6	363.9	359.5
125°	299.3	300.5	301.6	302.7	303.8	305.0	306.3	307.5	308.7	310.1	306.5
127.5°	260.6	261.0	261.3	261.7	262.2	262.7	263.3	263.7	264.4	265.1	262.7
130°	235.9	235.4	235.1	234.8	234.3	234.1	233.8	233.7	233.5	233.3	232.3
132.5°	221.5	220.5	219.6	218.7	217.7	217.0	216.1	215.5	214.7	214.1	213.7
135°	213.3	212.0	210.7	209.5	208.2	207.2	206.0	205.0	203.9	202.9	203.1
137.5°	207.8	206.5	205.2	204.0	202.7	201.5	200.4	199.3	198.3	197.3	197.7
140°	205.3	204.0	202.7	201.5	200.4	199.2	198.1	197.0	195.9	195.1	195.3
142.5°	202.1	201.0	199.7	198.7	197.6	196.5	195.5	194.5	193.6	192.8	193.0
145°	199.6	198.7	197.8	196.9	196.2	195.5	194.6	194.1	193.3	192.8	192.9
147.5°	196.3	195.6	195.0	194.3	193.8	193.2	192.7	192.1	191.6	191.2	191.3
150°	191.9	191.5	191.1	190.7	190.2	190.0	189.6	189.2	188.9	188.7	188.6
152.5°	187.4	187.0	186.6	186.2	185.9	185.6	185.2	184.9	184.7	184.4	184.4
155°	182.0	181.9	181.7	181.5	181.3	181.3	181.1	181.1	180.9	180.8	180.8
157.5°	178.8	178.7	178.6	178.7	178.6	178.7	178.6	178.7	178.6	178.7	178.8
160°	177.0	176.9	176.7	176.8	176.6	176.5	176.5	176.5	176.5	176.4	176.5
162.5°	175.2	175.4	175.4	175.5	175.6	175.7	175.8	175.9	176.0	176.2	176.3
165°	175.3	175.2	175.2	175.1	175.1	175.1	175.1	175.1	175.1	175.2	175.4
167.5°	174.7	174.8	174.9	175.0	175.1	175.1	175.3	175.5	175.6	175.9	176.1
170°	175.5	175.5	175.5	175.5	175.5	175.6	175.6	175.6	175.7	175.8	175.9
172.5°	177.0	177.0	176.9	177.0	176.9	177.0	177.0	177.0	177.0	177.1	177.2
175°	177.3	177.5	177.6	177.7	177.8	177.9	177.9	178.0	178.1	178.2	178.2
177.5°	178.1	178.1	178.1	178.1	178.1	178.2	178.2	178.2	178.2	178.1	178.2
180°	178.0	178.0	178.0	178.0	178.0	178.0	178.0	178.0	178.0	178.0	178.0



TEST NUMBER: P1444787  
 CATALOG NUMBER: EHBR1-12-UNV-TA-L940-UPL15

**CANDELA DISTRIBUTION (continued):**

	275°	277.5°	280°	282.5°	285°	287.5°	290°	292.5°	295°	297.5°	300°
0°	9875.3	9875.3	9875.3	9875.3	9875.3	9875.3	9875.3	9875.3	9875.3	9875.3	9875.3
2.5°	9998.9	9993.9	9999.0	9993.9	9999.0	9992.8	9997.0	9990.3	9992.0	9985.0	9986.8
5°	10376.9	10369.0	10373.2	10362.9	10364.0	10350.1	10349.9	10333.8	10329.5	10311.2	10303.2
7.5°	10682.7	10680.1	10681.6	10674.9	10674.1	10664.6	10660.2	10646.8	10638.5	10621.6	10610.0
10°	10634.3	10642.1	10644.1	10652.1	10653.7	10661.6	10663.2	10671.1	10672.7	10678.5	10678.6
12.5°	10150.3	10176.7	10183.1	10215.8	10229.6	10266.9	10287.0	10328.2	10352.6	10393.8	10419.1
15°	9217.8	9263.6	9281.9	9345.7	9381.0	9455.6	9502.3	9587.9	9648.3	9739.1	9804.0
17.5°	7934.5	7998.5	8027.3	8113.9	8170.3	8280.4	8359.6	8490.1	8590.0	8734.9	8849.9
20°	6511.4	6582.4	6621.7	6720.3	6787.0	6915.5	7014.5	7174.8	7308.5	7492.3	7649.4
22.5°	5134.6	5202.2	5245.7	5346.2	5421.2	5555.2	5665.9	5835.1	5984.9	6191.9	6380.3
25°	3942.4	4004.4	4043.7	4134.5	4205.1	4328.2	4433.8	4596.6	4743.2	4950.9	5144.0
27.5°	3013.9	3065.9	3103.8	3181.2	3243.3	3347.8	3438.5	3573.0	3699.4	3879.0	4051.1
30°	2307.4	2353.4	2390.3	2457.8	2515.4	2606.0	2685.7	2798.8	2903.3	3046.2	3183.1
32.5°	1763.2	1802.8	1835.7	1894.8	1947.0	2028.6	2100.5	2199.5	2289.2	2410.4	2523.1
35°	1344.4	1422.3	1416.8	1498.4	1511.4	1569.9	1634.1	1720.7	1800.1	1903.3	1999.0
37.5°	1043.4	1065.4	1088.9	1124.9	1162.8	1216.0	1270.2	1375.9	1414.8	1492.7	1572.0
40°	841.5	856.3	871.8	896.1	922.6	960.2	999.6	1050.1	1101.8	1164.9	1229.5
42.5°	711.4	719.8	729.7	743.9	760.3	784.1	810.4	844.6	880.7	925.1	970.5
45°	635.6	631.6	634.5	642.2	652.1	666.5	683.2	704.3	727.8	756.6	787.2
47.5°	564.9	566.5	567.4	571.6	576.9	586.6	596.6	611.1	638.8	647.2	664.0
50°	518.3	519.0	518.7	520.9	523.6	529.8	536.3	546.1	555.8	568.8	581.1
52.5°	479.1	480.2	480.1	481.5	482.9	486.9	491.0	497.9	504.3	512.5	519.5
55°	448.2	449.7	450.4	451.5	452.2	454.3	455.9	459.2	461.9	466.6	470.9
57.5°	424.5	426.5	427.4	427.9	427.1	427.0	426.4	427.1	427.6	430.1	432.6
60°	405.7	407.4	407.7	407.4	405.9	404.8	403.0	402.5	402.2	403.4	404.7
62.5°	386.2	386.8	386.4	385.9	384.1	383.1	381.2	380.6	379.9	380.9	381.5
65°	359.1	359.6	359.1	358.8	357.3	356.4	354.9	354.3	353.5	353.7	353.6
67.5°	337.1	337.6	337.3	336.8	335.8	335.2	334.1	333.3	332.3	331.9	331.1
70°	315.2	315.5	315.0	314.5	313.3	312.8	311.8	311.5	310.7	310.5	309.7
72.5°	289.9	290.0	289.1	288.9	288.0	287.9	287.5	287.9	287.9	288.3	288.1
75°	264.2	263.8	262.7	262.5	261.8	262.2	261.7	262.4	262.4	263.3	263.5
77.5°	238.3	237.0	234.9	233.9	232.5	232.4	231.5	232.1	231.9	233.0	233.5
80°	205.7	204.0	201.3	200.1	198.4	198.2	197.4	198.2	197.8	199.1	200.0
82.5°	164.2	162.8	160.1	159.0	157.1	157.3	156.4	157.3	157.2	159.0	160.1
85°	121.5	120.6	117.7	115.2	112.4	110.7	109.1	108.8	108.3	109.1	109.7
87.5°	70.2	69.3	67.1	65.6	60.7	60.8	58.9	58.8	58.3	57.9	58.9
90°	18.4	20.2	20.5	22.2	22.5	24.5	25.0	26.7	27.2	29.2	29.8
92.5°	17.0	18.1	19.2	20.2	21.3	22.5	23.6	24.7	27.1	29.3	31.9
95°	23.6	24.8	26.1	27.4	28.7	29.9	31.2	32.5	36.1	39.5	43.0
97.5°	33.5	34.5	35.3	36.1	37.0	37.9	38.8	39.6	43.3	47.1	50.9
100°	43.4	44.1	44.7	45.5	46.1	46.8	47.5	48.2	55.5	62.8	70.1
102.5°	68.8	71.7	74.6	77.5	80.5	83.5	86.4	89.3	105.9	122.6	139.3
105°	129.1	137.0	145.2	153.1	161.1	169.0	177.0	184.9	211.7	238.3	265.1
107.5°	237.9	250.5	263.1	275.8	288.3	300.9	313.5	326.2	352.2	378.2	404.3
110°	363.2	375.3	387.2	399.3	411.2	423.2	435.2	447.3	462.9	478.5	494.2



TEST NUMBER: P1444787  
 CATALOG NUMBER: EHBR1-12-UNV-TA-L940-UPL15

**CANDELA DISTRIBUTION (continued):**

	275°	277.5°	280°	282.5°	285°	287.5°	290°	292.5°	295°	297.5°	300°
112.5°	452.9	458.6	464.5	470.4	476.3	482.1	488.0	493.9	501.7	509.4	517.2
115°	480.0	480.4	480.7	481.1	481.5	481.9	482.3	482.8	485.3	487.7	490.2
117.5°	457.1	453.9	450.6	447.6	444.4	441.2	438.1	435.0	434.4	433.9	433.4
120°	410.8	406.5	402.2	397.8	393.6	389.4	385.2	381.0	378.8	376.6	374.5
122.5°	355.2	350.9	346.7	342.5	338.2	334.0	329.9	325.7	324.2	322.6	321.1
125°	302.8	299.3	295.7	292.2	288.7	285.3	281.8	278.5	278.3	278.1	278.0
127.5°	260.5	258.3	256.2	254.1	251.9	250.0	247.9	245.9	246.8	247.5	248.5
130°	231.2	230.2	229.4	228.3	227.6	226.8	225.9	225.1	226.7	228.2	229.8
132.5°	213.6	213.4	213.3	213.2	213.1	213.1	213.1	213.1	214.9	216.6	218.5
135°	203.3	203.6	203.9	204.1	204.6	204.9	205.3	205.7	207.6	209.2	210.9
137.5°	198.2	198.4	199.0	199.5	200.0	200.5	201.1	201.7	203.1	204.4	205.8
140°	195.6	195.8	196.3	196.7	197.1	197.5	198.1	198.4	199.6	200.7	201.7
142.5°	193.3	193.6	194.1	194.3	194.8	195.2	195.6	196.1	196.9	197.6	198.4
145°	193.1	193.3	193.6	193.9	194.2	194.5	194.8	195.2	195.7	196.0	196.6
147.5°	191.4	191.5	191.6	191.8	192.1	192.3	192.5	192.7	192.9	193.2	193.6
150°	188.7	188.7	188.8	188.8	188.9	189.0	189.2	189.2	189.5	189.8	190.1
152.5°	184.5	184.5	184.5	184.6	184.7	184.7	184.7	184.8	185.1	185.4	185.7
155°	181.0	181.1	181.3	181.4	181.6	181.7	181.9	182.0	182.1	182.2	182.4
157.5°	178.9	179.0	179.2	179.2	179.4	179.5	179.6	179.8	180.0	180.1	180.2
160°	176.7	177.0	177.2	177.4	177.6	177.8	178.0	178.2	178.4	178.5	178.7
162.5°	176.5	176.5	176.7	176.8	176.9	177.1	177.2	177.4	177.7	177.9	178.0
165°	175.6	175.9	176.2	176.3	176.5	176.8	177.0	177.3	177.4	177.5	177.7
167.5°	176.3	176.5	176.7	176.8	177.1	177.3	177.6	177.8	177.9	177.9	178.1
170°	176.2	176.4	176.5	176.6	176.8	177.0	177.3	177.4	177.7	177.9	178.0
172.5°	177.4	177.5	177.7	177.7	177.9	178.0	178.2	178.4	178.6	178.8	178.9
175°	178.2	178.2	178.2	178.3	178.3	178.3	178.3	178.4	178.5	178.5	178.5
177.5°	178.3	178.4	178.5	178.6	178.7	178.8	178.9	179.0	179.0	179.0	179.0
180°	178.0	178.0	178.0	178.0	178.0	178.0	178.0	178.0	178.0	178.0	178.0



TEST NUMBER: P1444787  
 CATALOG NUMBER: EHBR1-12-UNV-TA-L940-UPL15

**CANDELA DISTRIBUTION (continued):**

	302.5°	305°	307.5°	310°	312.5°	315°	317.5°	320°	322.5°	325°	327.5°
0°	9875.3	9875.3	9875.3	9875.3	9875.3	9875.3	9875.3	9875.3	9875.3	9875.3	9875.3
2.5°	9979.8	9980.3	9972.2	9971.8	9964.2	9963.3	9955.9	9953.7	9947.7	9945.6	9939.4
5°	10282.6	10272.8	10250.2	10236.8	10214.4	10199.6	10175.3	10159.5	10136.1	10118.5	10094.9
7.5°	10588.8	10573.6	10548.2	10527.5	10496.5	10471.7	10435.4	10405.5	10366.1	10332.0	10290.7
10°	10678.6	10676.3	10669.8	10660.4	10645.9	10629.7	10604.9	10579.1	10544.6	10507.1	10461.2
12.5°	10457.6	10481.5	10514.1	10533.4	10556.8	10567.1	10576.7	10574.3	10567.9	10549.0	10522.5
15°	9897.9	9964.9	10053.7	10122.5	10201.7	10259.2	10322.7	10362.3	10401.8	10420.1	10431.3
17.5°	9007.3	9134.3	9293.5	9425.5	9577.7	9700.0	9834.0	9934.9	10038.7	10113.0	10180.2
20°	7863.6	8047.5	8272.6	8471.5	8702.9	8903.8	9124.2	9305.0	9491.4	9637.2	9775.3
22.5°	6622.9	6841.4	7113.6	7365.7	7663.9	7931.8	8234.3	8497.4	8772.1	9001.7	9223.6
25°	5402.9	5642.4	5940.1	6221.4	6559.2	6870.9	7229.5	7557.4	7912.6	8220.8	8525.4
27.5°	4288.8	4524.1	4828.0	5127.4	5484.5	5816.6	6200.8	6562.2	6966.6	7339.4	7720.8
30°	3373.2	3572.7	3845.2	4135.3	4487.5	4825.5	5213.9	5585.4	6006.0	6413.2	6842.8
32.5°	2672.5	2824.5	3038.7	3284.0	3608.9	3930.7	4300.5	4659.3	5073.5	5484.7	5931.6
35°	2122.5	2241.0	2404.3	2595.8	2871.0	3148.3	3475.4	3801.6	4188.0	4578.3	5012.6
37.5°	1673.7	1769.8	1897.8	2041.6	2262.3	2489.9	2758.1	3028.6	3364.4	3710.3	4103.9
40°	1306.9	1384.8	1484.4	1591.6	1758.3	1933.7	2141.1	2350.8	2620.6	2903.4	3229.1
42.5°	1026.7	1084.2	1154.5	1232.8	1388.3	1481.5	1622.2	1773.9	1972.2	2177.4	2422.4
45°	824.5	863.7	912.5	965.1	1037.3	1116.2	1212.5	1313.6	1502.0	1594.4	1743.4
47.5°	688.6	714.9	746.0	779.0	821.6	867.5	924.7	983.1	1058.6	1136.9	1228.7
50°	597.0	623.7	634.5	651.6	676.2	702.5	734.7	766.8	807.4	848.4	895.7
52.5°	529.1	537.7	549.4	560.3	575.5	605.4	615.1	631.8	654.6	676.8	701.6
55°	477.1	482.8	490.3	496.9	506.2	515.0	527.7	539.0	554.0	567.5	584.0
57.5°	436.8	440.4	445.6	449.9	455.9	460.9	468.3	474.4	483.2	490.7	500.7
60°	407.4	409.8	413.3	416.2	419.9	422.5	426.2	429.1	433.7	437.5	443.1
62.5°	383.4	384.7	387.0	388.6	391.0	392.3	394.3	395.6	398.1	400.0	403.1
65°	354.7	355.0	356.4	357.2	359.1	359.8	361.4	361.9	364.1	365.5	368.2
67.5°	331.1	330.5	330.5	329.9	330.2	329.6	329.8	329.2	330.0	330.5	332.5
70°	309.6	308.7	308.4	307.3	307.1	306.0	305.8	304.8	304.7	304.5	305.2
72.5°	288.6	288.3	288.4	287.7	287.6	286.9	286.9	286.6	287.0	287.2	288.2
75°	264.5	264.5	265.1	264.4	264.6	264.0	264.2	263.7	263.9	263.8	264.8
77.5°	235.1	235.8	237.1	236.8	237.2	236.5	236.8	236.1	236.4	235.8	236.2
80°	202.1	203.6	205.2	205.2	206.0	205.4	206.1	205.4	205.7	204.8	204.6
82.5°	162.9	164.2	166.0	166.0	167.7	168.0	169.7	169.7	170.8	170.1	169.6
85°	111.3	112.2	113.8	114.7	116.4	117.4	119.1	119.8	118.5	120.8	119.1
87.5°	58.1	60.3	59.1	62.0	61.3	64.1	63.5	66.1	65.6	67.9	67.6
90°	32.1	33.0	35.3	36.2	39.0	40.2	40.6	39.2	39.7	38.3	38.7
92.5°	34.2	36.6	39.0	41.5	43.8	46.2	44.0	41.7	39.6	37.4	35.1
95°	46.6	50.0	53.6	57.1	60.6	64.1	60.4	56.6	52.8	49.0	45.3
97.5°	54.7	58.4	62.2	66.0	69.8	73.5	69.0	64.6	60.2	55.8	51.3
100°	77.3	84.7	92.0	99.2	106.6	113.8	105.6	97.3	89.1	80.8	72.4
102.5°	156.1	172.8	189.5	206.3	222.9	239.6	222.0	204.5	186.8	169.2	151.6
105°	291.8	318.6	345.3	372.1	398.7	425.6	397.1	368.5	340.0	311.4	282.8
107.5°	430.4	456.4	482.6	508.7	534.8	560.9	532.0	502.9	474.0	445.0	416.1
110°	509.9	525.5	541.2	556.9	572.6	588.3	567.2	546.0	525.0	503.7	482.6



TEST NUMBER: P1444787  
 CATALOG NUMBER: EHBR1-12-UNV-TA-L940-UPL15

**CANDELA DISTRIBUTION (continued):**

	302.5°	305°	307.5°	310°	312.5°	315°	317.5°	320°	322.5°	325°	327.5°
112.5°	525.1	532.9	540.7	548.6	556.4	564.3	549.2	534.1	518.9	503.8	488.7
115°	492.7	495.1	497.6	500.1	502.6	505.1	494.9	484.7	474.4	464.2	454.0
117.5°	432.9	432.5	432.0	431.6	431.0	430.6	424.9	419.1	413.4	407.6	401.8
120°	372.4	370.1	368.0	366.0	363.7	361.6	359.1	356.6	354.2	351.7	349.2
122.5°	319.6	318.2	316.7	315.1	313.5	312.0	311.0	310.1	309.0	308.0	307.1
125°	277.9	277.8	277.6	277.4	277.4	277.2	276.7	276.1	275.6	275.0	274.5
127.5°	249.2	250.1	250.9	251.8	252.6	253.4	253.1	253.1	252.8	252.7	252.5
130°	231.3	232.8	234.3	235.9	237.3	238.9	238.6	238.2	237.8	237.5	237.2
132.5°	220.3	222.0	223.8	225.6	227.3	229.1	228.7	228.3	227.8	227.5	227.0
135°	212.6	214.3	216.0	217.7	219.2	220.9	220.4	220.0	219.3	218.9	218.5
137.5°	207.1	208.5	209.7	211.0	212.3	213.6	213.1	212.6	212.0	211.6	211.1
140°	202.7	203.8	204.8	205.9	206.9	207.9	207.3	206.7	206.0	205.4	204.8
142.5°	199.2	199.9	200.7	201.4	202.2	202.9	202.1	201.2	200.4	199.7	198.8
145°	197.1	197.5	198.0	198.5	198.8	199.4	198.3	197.5	196.5	195.6	194.7
147.5°	193.9	194.1	194.2	194.5	194.7	195.1	194.2	193.2	192.4	191.5	190.5
150°	190.2	190.5	190.7	190.9	191.2	191.4	190.4	189.5	188.6	187.6	186.8
152.5°	185.9	186.0	186.2	186.4	186.6	186.8	186.0	185.1	184.3	183.3	182.4
155°	182.5	182.7	182.8	182.9	183.0	183.1	182.3	181.7	180.9	180.2	179.4
157.5°	180.3	180.5	180.6	180.6	180.7	180.8	180.3	179.7	179.2	178.6	178.0
160°	178.8	178.9	179.0	179.1	179.2	179.2	178.7	178.3	177.9	177.4	176.8
162.5°	178.2	178.4	178.6	178.7	179.0	179.1	178.6	178.0	177.5	176.9	176.3
165°	177.8	177.9	177.9	178.0	178.1	178.2	177.8	177.5	177.0	176.6	176.3
167.5°	178.2	178.3	178.4	178.5	178.5	178.6	178.2	177.9	177.5	177.1	176.6
170°	178.2	178.3	178.5	178.6	178.8	178.9	178.6	178.3	177.9	177.7	177.4
172.5°	179.1	179.2	179.2	179.4	179.5	179.7	179.3	179.1	178.7	178.3	178.0
175°	178.5	178.6	178.7	178.7	178.7	178.7	178.4	178.1	177.9	177.7	177.4
177.5°	179.0	179.0	179.0	179.0	179.0	179.0	178.8	178.6	178.4	178.2	178.0
180°	178.0	178.0	178.0	178.0	178.0	178.0	178.0	178.0	178.0	178.0	178.0



TEST NUMBER: P1444787  
 CATALOG NUMBER: EHBR1-12-UNV-TA-L940-UPL15

**CANDELA DISTRIBUTION (continued):**

	330°	332.5°	335°	337.5°	340°	342.5°	345°	347.5°	350°	352.5°	355°
0°	9875.3	9875.3	9875.3	9875.3	9875.3	9875.3	9875.3	9875.3	9875.3	9875.3	9875.3
2.5°	9937.3	9933.0	9930.2	9926.7	9924.5	9921.7	9919.8	9918.0	9916.6	9915.3	9914.4
5°	10077.1	10054.9	10037.6	10018.9	10003.6	9988.3	9976.5	9966.7	9960.0	9954.9	9951.9
7.5°	10255.0	10214.3	10178.1	10140.0	10105.9	10072.4	10043.5	10018.5	9999.8	9987.7	9980.4
10°	10413.8	10359.4	10305.6	10248.9	10195.2	10143.1	10094.9	10052.6	10019.2	9996.9	9984.0
12.5°	10485.0	10438.7	10383.7	10322.2	10256.4	10189.8	10124.8	10066.2	10017.1	9984.2	9965.1
15°	10422.3	10403.3	10366.0	10318.3	10255.7	10186.9	10110.7	10038.9	9973.1	9930.3	9905.5
17.5°	10218.3	10244.8	10242.0	10223.8	10178.8	10120.8	10043.1	9962.6	9880.2	9823.1	9791.9
20°	9874.0	9957.5	9999.8	10021.6	10003.9	9966.4	9896.0	9814.3	9718.3	9643.6	9598.1
22.5°	9390.1	9537.5	9629.5	9696.7	9710.9	9698.2	9636.0	9558.3	9451.2	9361.5	9294.3
25°	8767.2	8983.2	9128.4	9242.3	9286.5	9297.9	9245.1	9167.9	9048.4	8944.0	8851.6
27.5°	8033.5	8314.2	8508.1	8661.0	8730.2	8760.1	8711.4	8632.6	8491.3	8366.6	8246.0
30°	7207.5	7540.6	7774.0	7957.5	8041.6	8081.2	8029.5	7941.5	7777.1	7627.0	7475.1
32.5°	6323.4	6687.8	6942.3	7141.4	7224.8	7262.1	7194.4	7095.7	6905.6	6728.9	6551.6
35°	5397.8	5765.6	6022.2	6216.1	6286.0	6308.5	6222.0	6107.8	5897.2	5703.3	5509.9
37.5°	4453.3	4795.6	5028.7	5202.7	5246.0	5249.8	5145.7	5019.5	4798.3	4607.0	4414.6
40°	3517.0	3805.6	3993.9	4133.2	4148.2	4134.7	4021.5	3894.6	3687.5	3516.2	3347.3
42.5°	2635.0	2852.9	2987.2	3082.6	3076.9	3050.5	2946.7	2837.5	2666.7	2536.2	2403.4
45°	1879.4	2023.1	2101.6	2157.5	2139.5	2114.3	2033.5	1957.0	1840.9	1756.6	1667.4
47.5°	1305.7	1477.2	1447.3	1556.6	1462.5	1524.6	1395.2	1323.9	1262.3	1217.5	1167.0
50°	934.7	974.0	993.0	1006.0	999.1	989.6	966.3	945.5	917.4	896.9	873.0
52.5°	721.8	741.5	752.3	760.1	758.5	755.1	744.9	735.7	722.5	713.8	703.4
55°	611.4	611.7	631.6	623.1	635.6	620.9	626.7	610.4	613.0	599.0	589.6
57.5°	508.1	516.1	519.8	523.3	522.3	521.7	517.8	515.8	511.4	510.0	506.8
60°	446.9	451.2	452.0	453.6	452.3	451.8	448.7	447.6	444.7	444.1	442.0
62.5°	405.0	407.1	407.1	407.1	405.5	403.7	400.3	398.6	396.0	395.5	394.3
65°	370.0	372.3	372.7	373.1	371.8	370.5	367.5	365.6	363.0	361.9	360.5
67.5°	333.9	336.2	337.1	338.3	337.5	337.3	335.2	334.5	332.8	332.3	331.1
70°	305.5	306.5	306.4	306.4	304.8	303.3	301.0	299.9	298.0	297.7	296.5
72.5°	288.6	289.4	288.9	288.3	286.2	284.1	281.3	279.2	276.9	275.5	273.8
75°	264.9	265.8	265.2	264.9	263.0	261.6	259.4	258.3	256.6	256.1	255.0
77.5°	235.7	236.2	235.2	235.1	233.7	232.8	231.1	230.9	229.7	229.7	228.5
80°	203.3	203.0	201.5	201.1	199.7	199.4	198.1	198.2	197.2	197.6	196.9
82.5°	167.2	166.3	164.3	163.8	162.1	161.9	161.1	161.8	161.2	162.1	161.5
85°	119.9	120.1	119.3	119.3	118.8	118.9	118.9	119.3	119.4	120.3	120.2
87.5°	66.8	67.8	67.6	68.5	68.5	69.4	69.8	71.2	71.4	72.8	72.8
90°	37.3	37.9	36.5	37.1	36.4	37.5	37.2	38.2	37.6	38.5	37.6
92.5°	32.9	30.7	28.5	26.3	25.2	23.9	23.0	21.7	20.7	19.5	18.4
95°	41.5	37.7	33.9	30.2	28.9	27.6	26.4	25.1	23.8	22.5	21.2
97.5°	46.9	42.5	38.0	33.5	32.4	31.3	30.1	29.0	27.9	26.7	25.6
100°	64.1	55.8	47.5	39.2	38.3	37.4	36.4	35.5	34.5	33.4	32.5
102.5°	134.1	116.4	98.8	81.1	77.8	74.4	71.2	67.7	64.4	61.0	57.8
105°	254.3	225.8	197.2	168.6	159.6	150.5	141.4	132.4	123.3	114.2	105.2
107.5°	387.0	358.0	329.1	300.1	283.3	266.5	249.8	233.0	216.2	199.5	182.7
110°	461.4	440.3	419.1	397.9	384.5	371.0	357.5	344.0	330.4	316.9	303.3



TEST NUMBER: P1444787  
 CATALOG NUMBER: EHBR1-12-UNV-TA-L940-UPL15

**CANDELA DISTRIBUTION (continued):**

	330°	332.5°	335°	337.5°	340°	342.5°	345°	347.5°	350°	352.5°	355°
112.5°	473.6	458.4	443.2	428.0	421.9	415.8	409.7	403.6	397.3	391.2	385.0
115°	443.7	433.4	423.2	412.8	410.7	408.5	406.5	404.2	402.0	399.8	397.6
117.5°	396.0	390.3	384.4	378.7	379.0	379.4	379.6	380.0	380.3	380.6	380.8
120°	346.7	344.2	341.6	339.2	341.0	342.8	344.7	346.4	348.2	349.9	351.6
122.5°	306.0	305.0	304.0	302.9	305.1	307.3	309.5	311.6	313.8	315.8	317.9
125°	274.0	273.3	272.8	272.2	274.5	276.7	278.9	281.0	283.2	285.3	287.3
127.5°	252.3	252.0	251.9	251.6	253.3	254.7	256.3	257.8	259.2	260.6	262.1
130°	236.8	236.5	236.1	235.8	237.2	238.6	240.0	241.3	242.6	243.8	245.0
132.5°	226.7	226.2	225.7	225.4	226.3	227.2	228.3	229.1	230.0	230.8	231.6
135°	218.0	217.4	216.9	216.4	217.3	218.3	219.1	219.9	220.7	221.4	222.1
137.5°	210.6	210.0	209.5	209.0	209.8	210.6	211.4	212.1	212.8	213.5	214.1
140°	204.2	203.5	202.9	202.3	203.0	203.7	204.4	205.1	205.7	206.2	206.8
142.5°	198.0	197.0	196.4	195.5	196.0	196.5	196.9	197.4	197.9	198.3	198.6
145°	193.8	192.8	191.8	190.9	191.3	191.6	192.0	192.4	192.8	193.0	193.2
147.5°	189.7	188.8	187.8	186.9	187.3	187.5	187.8	188.0	188.3	188.5	188.7
150°	185.8	184.8	183.9	182.9	183.2	183.4	183.6	183.9	184.0	184.2	184.4
152.5°	181.5	180.6	179.7	178.8	179.0	179.2	179.3	179.5	179.6	179.8	179.9
155°	178.7	177.9	177.1	176.4	176.5	176.7	176.9	177.0	177.0	177.2	177.3
157.5°	177.4	176.7	176.2	175.5	175.6	175.6	175.7	175.6	175.6	175.6	175.6
160°	176.4	175.8	175.3	174.7	174.7	174.8	174.8	174.8	174.8	174.7	174.7
162.5°	175.7	175.1	174.5	173.9	173.9	173.9	174.0	173.9	173.8	173.8	173.8
165°	175.8	175.3	175.0	174.4	174.4	174.3	174.3	174.1	174.0	173.9	173.8
167.5°	176.3	175.8	175.4	174.9	175.0	175.0	175.0	175.0	175.0	174.9	174.9
170°	177.0	176.5	176.3	175.9	175.8	175.8	175.7	175.6	175.5	175.4	175.3
172.5°	177.7	177.3	177.0	176.5	176.5	176.5	176.5	176.4	176.3	176.2	176.2
175°	177.1	176.9	176.5	176.3	176.2	176.2	176.2	176.1	176.0	176.0	175.9
177.5°	177.9	177.7	177.5	177.3	177.2	177.2	177.2	177.1	177.1	177.1	177.1
180°	178.0	178.0	178.0	178.0	178.0	178.0	178.0	178.0	178.0	178.0	178.0



TEST NUMBER: P1444787  
CATALOG NUMBER: EHBR1-12-UNV-TA-L940-UPL15

**CANDELA DISTRIBUTION (continued):**

	357.5°	360°
0°	9875.3	9875.3
2.5°	9913.5	9913.0
5°	9950.3	9949.8
7.5°	9978.4	9978.2
10°	9981.7	9983.4
12.5°	9961.8	9963.2
15°	9903.7	9906.4
17.5°	9792.4	9796.0
20°	9600.9	9604.6
22.5°	9290.6	9292.2
25°	8839.6	8833.3
27.5°	8224.8	8213.8
30°	7443.2	7432.5
32.5°	6511.3	6504.6
35°	5462.2	5458.0
37.5°	4357.8	4349.2
40°	3285.5	3260.6
42.5°	2345.1	2301.4
45°	1620.7	1568.8
47.5°	1131.4	1099.3
50°	857.6	847.2
52.5°	698.8	696.4
55°	589.6	588.5
57.5°	507.6	507.2
60°	443.1	443.0
62.5°	395.0	395.2
65°	361.2	361.3
67.5°	331.4	331.2
70°	297.0	296.7
72.5°	273.3	272.9
75°	255.0	254.7
77.5°	228.9	228.5
80°	197.3	196.9
82.5°	162.3	161.7
85°	121.1	121.1
87.5°	74.1	74.1
90°	38.4	37.4
92.5°	17.3	16.3
95°	19.9	18.6
97.5°	24.5	23.4
100°	31.6	30.7
102.5°	54.4	51.1
105°	96.1	87.0
107.5°	165.9	149.2
110°	289.8	276.3



TEST NUMBER: P1444787  
CATALOG NUMBER: EHBR1-12-UNV-TA-L940-UPL15

**CANDELA DISTRIBUTION (continued):**

	357.5°	360°
112.5°	378.9	372.8
115°	395.4	393.2
117.5°	381.0	381.3
120°	353.3	355.0
122.5°	319.9	321.9
125°	289.3	291.3
127.5°	263.3	264.6
130°	246.0	247.3
132.5°	232.4	232.9
135°	222.8	223.3
137.5°	214.7	215.1
140°	207.1	207.7
142.5°	198.9	199.2
145°	193.5	193.7
147.5°	188.7	188.8
150°	184.5	184.6
152.5°	180.0	180.1
155°	177.3	177.4
157.5°	175.5	175.4
160°	174.6	174.6
162.5°	173.8	173.7
165°	173.6	173.5
167.5°	174.8	174.8
170°	175.2	175.1
172.5°	176.1	176.0
175°	175.9	175.9
177.5°	177.1	177.0
180°	178.0	178.0

LM-79-2019: Approved Method: Electrical and Photometric Measurements of Solid-  
State Lighting Products

Report Prepared for

Cooper Lighting Solutions

Metalux

Report Number: SP1-2506-472-7

Test Date: 08/04/2025

Luminaire Tested: EHBR-60-L940-N

Data in this report applies to families of products including EHBR-60-L940-N

**Test Information**

Test Method: LM-79-2019  
 Report Number: SP1-2506-472-7  
 Test Lab: COOPER LIGHTING SOLUTIONS  
 Photometer: SP1 - 76IN SPHERE  
 Measurement Geometry: 4π  
 Issue Date: 08/05/2025  
 Manufacturer: COOPER LIGHTING SOLUTIONS  
 Product Line: Metalux  
 Catalog Number: **EHBR-60-L940-N**  
 Description: Elevate Round Highbay at, 60000 lumens, 4000K 90CRI LEDs with N lens

**Spectral Parameters**

CCT (K): 3963  
 CIE u': 0.2267  
 CIE v': 0.5003  
 Duv: -0.0016  
 CIE x: 0.3810  
 CIE y: 0.3738  
 CIE z: 0.2453  
 Peak Wavelength (nm): 630  
 Dominant Wavelength (nm): 580  
 Purity: 26.49712  
 Rf: 90.7  
 Rg: 101

CRI (Ra):	93.4		
R1:	95.2	R9:	66.4
R2:	95.1	R10:	86.6
R3:	93.3	R11:	94.4
R4:	94.5	R12:	75.4
R5:	94.2	R13:	95.0
R6:	92.9	R14:	95.4
R7:	94.0	R15:	92.8
R8:	87.7		



**Test Conditions**

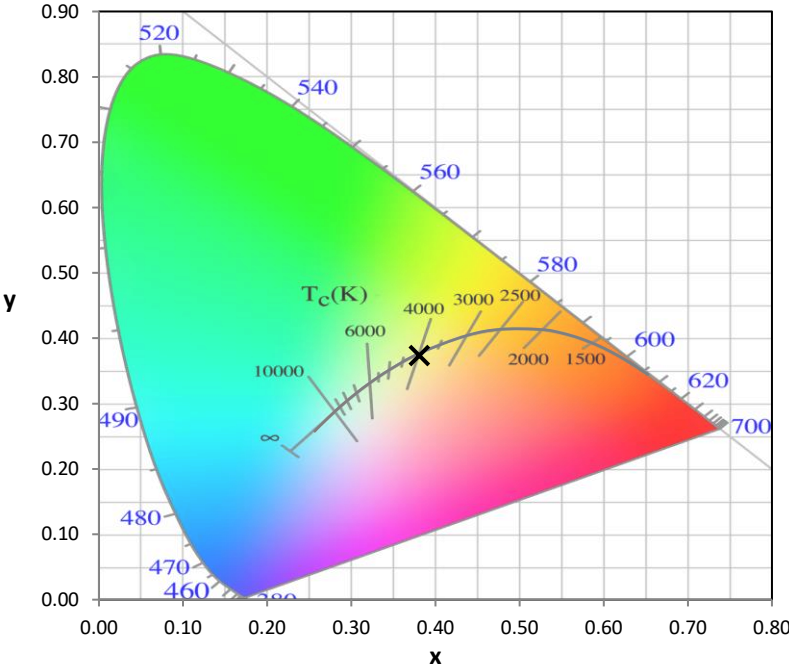
Stabilization Time: 44M  
 Operation Time: 1H 44M  
 Sphere Temperature (°C): 25.0

REPORT NUMBER: SP1-2506-472-7

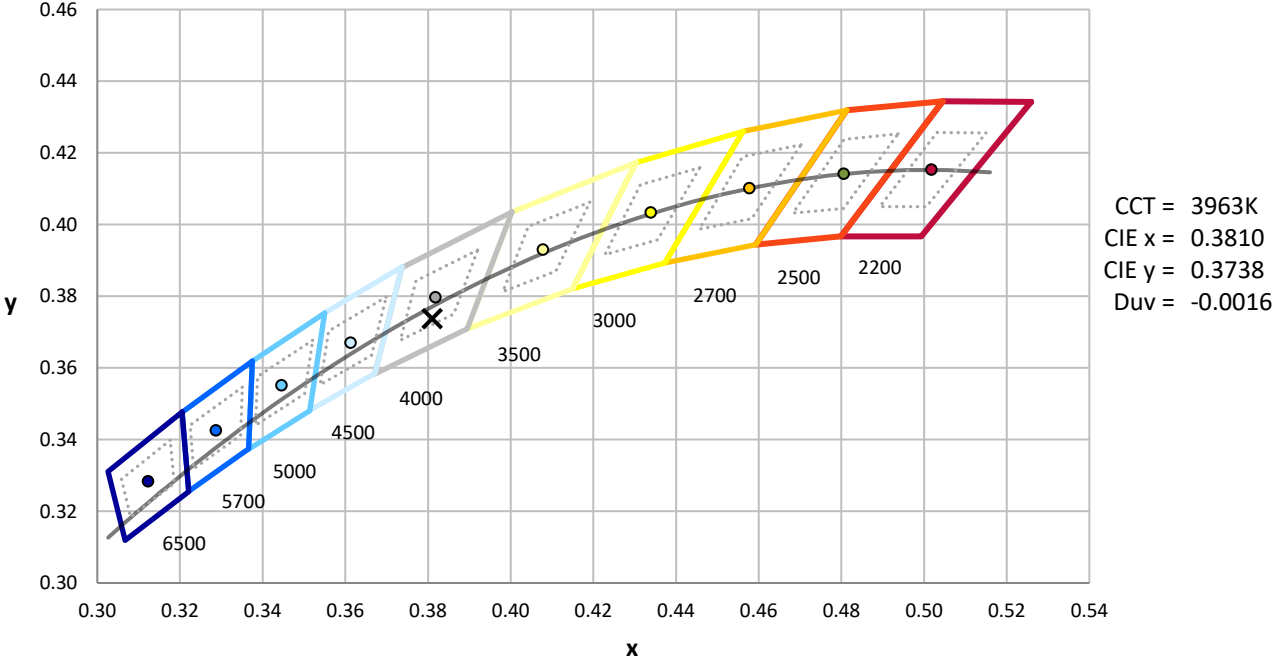
Measurement and Test Equipment			
Instrument	Identification Number	Calibration Date	Calibration Due Date
Photometer	76INCH SPHERE IN0058	6/16/2025	12/16/2025
Power Meter	XITRON INXT2011004	1/21/2025	1/21/2026
AC Power Source	CHROMA 61603 IN0063	10/22/2024	10/22/2025
DC Power Source	AGILENT E3634A IN0208	10/22/2024	10/22/2025
Sphere Thermometer	ONSET IN0085	10/22/2024	10/22/2025
Room Thermometer	ONSET IN0046	10/22/2024	10/22/2025

REPORT NUMBER: SP1-2506-472-7

**CIE 1931 Chromaticity Diagram**



**CIE 1931 Chromaticity Diagram with 2017 ANSI 7-Step and 4-Step Quadrangles**



Point lies inside the ANSI 4000K 4-step quadrangle

REPORT NUMBER: SP1-2506-472-7

**Photopic Flux vs. Wavelength**



**Photopic Lumens: NR**

λ (nm)	Power W <sup>^</sup> /nm	Lumens (φ/nm)	λ (nm)	Power W <sup>^</sup> /nm	Lumens (φ/nm)	λ (nm)	Power W <sup>^</sup> /nm	Lumens (φ/nm)	λ (nm)	Power W <sup>^</sup> /nm	Lumens (φ/nm)	λ (nm)	Power W <sup>^</sup> /nm	Lumens (φ/nm)
360	0	NR	490	141	NR	620	276	NR	750	5	NR	880	0	NR
365	0	NR	495	167	NR	625	279	NR	755	4	NR	885	0	NR
370	0	NR	500	193	NR	630	1000	NR	760	4	NR	890	0	NR
375	0	NR	505	215	NR	635	628	NR	765	3	NR	895	0	NR
380	0	NR	510	230	NR	640	164	NR	770	3	NR	900	0	NR
385	0	NR	515	243	NR	645	161	NR	775	2	NR	905	0	NR
390	1	NR	520	251	NR	650	137	NR	780	2	NR	910	0	NR
395	2	NR	525	256	NR	655	111	NR	785	2	NR	915	0	NR
400	3	NR	530	262	NR	660	92	NR	790	1	NR	920	0	NR
405	4	NR	535	267	NR	665	76	NR	795	1	NR	925	0	NR
410	6	NR	540	271	NR	670	71	NR	800	1	NR	930	0	NR
415	11	NR	545	276	NR	675	56	NR	805	1	NR	935	0	NR
420	20	NR	550	280	NR	680	47	NR	810	1	NR	940	0	NR
425	37	NR	555	285	NR	685	40	NR	815	1	NR	945	0	NR
430	63	NR	560	290	NR	690	34	NR	820	1	NR	950	0	NR
435	108	NR	565	294	NR	695	29	NR	825	1	NR	955	0	NR
440	186	NR	570	296	NR	700	25	NR	830	0	NR	960	0	NR
445	323	NR	575	298	NR	705	21	NR	835	0	NR	965	0	NR
450	403	NR	580	299	NR	710	18	NR	840	0	NR	970	0	NR
455	293	NR	585	298	NR	715	15	NR	845	0	NR	975	0	NR
460	214	NR	590	296	NR	720	13	NR	850	0	NR	980	0	NR
465	180	NR	595	288	NR	725	11	NR	855	0	NR	985	0	NR
470	132	NR	600	286	NR	730	9	NR	860	0	NR	990	0	NR
475	109	NR	605	282	NR	735	8	NR	865	0	NR	995	0	NR
480	110	NR	610	311	NR	740	7	NR	870	0	NR	1000	0	NR
485	121	NR	615	334	NR	745	6	NR	875	0	NR			

REPORT NUMBER: SP1-2506-472-7

**Scotopic Flux vs. Wavelength**



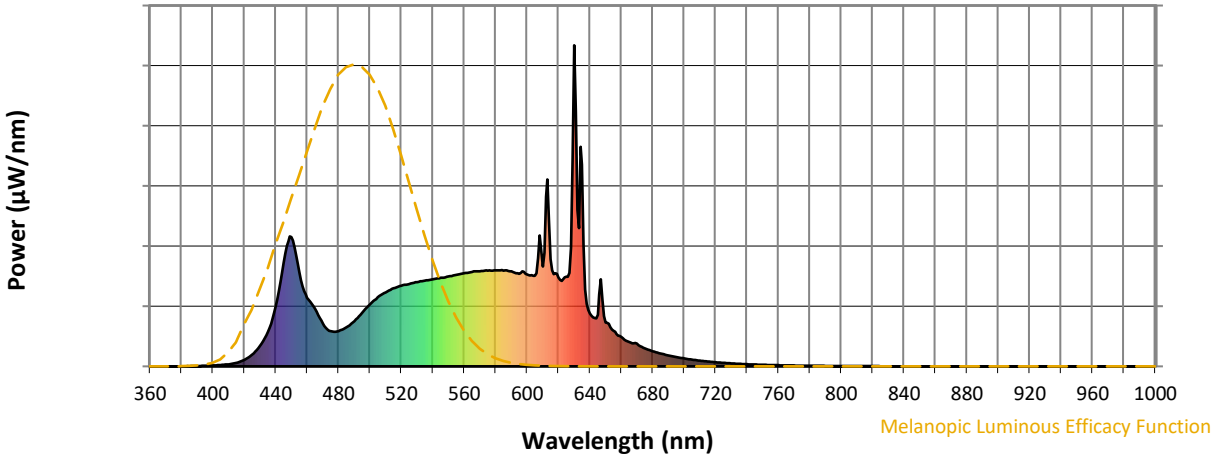
**Scotopic Lumens: NR**

**S/P: 1.76**

λ (nm)	Power W <sup>^</sup> /nm	Lumens (φ/nm)	λ (nm)	Power W <sup>^</sup> /nm	Lumens (φ/nm)	λ (nm)	Power W <sup>^</sup> /nm	Lumens (φ/nm)	λ (nm)	Power W <sup>^</sup> /nm	Lumens (φ/nm)	λ (nm)	Power W <sup>^</sup> /nm	Lumens (φ/nm)
360	0	NR	490	141	NR	620	276	NR	750	5	NR	880	0	NR
365	0	NR	495	167	NR	625	279	NR	755	4	NR	885	0	NR
370	0	NR	500	193	NR	630	1000	NR	760	4	NR	890	0	NR
375	0	NR	505	215	NR	635	628	NR	765	3	NR	895	0	NR
380	0	NR	510	230	NR	640	164	NR	770	3	NR	900	0	NR
385	0	NR	515	243	NR	645	161	NR	775	2	NR	905	0	NR
390	1	NR	520	251	NR	650	137	NR	780	2	NR	910	0	NR
395	2	NR	525	256	NR	655	111	NR	785	2	NR	915	0	NR
400	3	NR	530	262	NR	660	92	NR	790	1	NR	920	0	NR
405	4	NR	535	267	NR	665	76	NR	795	1	NR	925	0	NR
410	6	NR	540	271	NR	670	71	NR	800	1	NR	930	0	NR
415	11	NR	545	276	NR	675	56	NR	805	1	NR	935	0	NR
420	20	NR	550	280	NR	680	47	NR	810	1	NR	940	0	NR
425	37	NR	555	285	NR	685	40	NR	815	1	NR	945	0	NR
430	63	NR	560	290	NR	690	34	NR	820	1	NR	950	0	NR
435	108	NR	565	294	NR	695	29	NR	825	1	NR	955	0	NR
440	186	NR	570	296	NR	700	25	NR	830	0	NR	960	0	NR
445	323	NR	575	298	NR	705	21	NR	835	0	NR	965	0	NR
450	403	NR	580	299	NR	710	18	NR	840	0	NR	970	0	NR
455	293	NR	585	298	NR	715	15	NR	845	0	NR	975	0	NR
460	214	NR	590	296	NR	720	13	NR	850	0	NR	980	0	NR
465	180	NR	595	288	NR	725	11	NR	855	0	NR	985	0	NR
470	132	NR	600	286	NR	730	9	NR	860	0	NR	990	0	NR
475	109	NR	605	282	NR	735	8	NR	865	0	NR	995	0	NR
480	110	NR	610	311	NR	740	7	NR	870	0	NR	1000	0	NR
485	121	NR	615	334	NR	745	6	NR	875	0	NR			

REPORT NUMBER: SP1-2506-472-7

Melanopic Flux vs. Wavelength



Melanopic Lumens: NR

M/P: 3.64

λ (nm)	Power W <sup>^</sup> /nm	Lumens (φ/nm)	λ (nm)	Power W <sup>^</sup> /nm	Lumens (φ/nm)	λ (nm)	Power W <sup>^</sup> /nm	Lumens (φ/nm)	λ (nm)	Power W <sup>^</sup> /nm	Lumens (φ/nm)	λ (nm)	Power W <sup>^</sup> /nm	Lumens (φ/nm)
360	0	NR	490	141	NR	620	276	NR	750	5	NR	880	0	NR
365	0	NR	495	167	NR	625	279	NR	755	4	NR	885	0	NR
370	0	NR	500	193	NR	630	1000	NR	760	4	NR	890	0	NR
375	0	NR	505	215	NR	635	628	NR	765	3	NR	895	0	NR
380	0	NR	510	230	NR	640	164	NR	770	3	NR	900	0	NR
385	0	NR	515	243	NR	645	161	NR	775	2	NR	905	0	NR
390	1	NR	520	251	NR	650	137	NR	780	2	NR	910	0	NR
395	2	NR	525	256	NR	655	111	NR	785	2	NR	915	0	NR
400	3	NR	530	262	NR	660	92	NR	790	1	NR	920	0	NR
405	4	NR	535	267	NR	665	76	NR	795	1	NR	925	0	NR
410	6	NR	540	271	NR	670	71	NR	800	1	NR	930	0	NR
415	11	NR	545	276	NR	675	56	NR	805	1	NR	935	0	NR
420	20	NR	550	280	NR	680	47	NR	810	1	NR	940	0	NR
425	37	NR	555	285	NR	685	40	NR	815	1	NR	945	0	NR
430	63	NR	560	290	NR	690	34	NR	820	1	NR	950	0	NR
435	108	NR	565	294	NR	695	29	NR	825	1	NR	955	0	NR
440	186	NR	570	296	NR	700	25	NR	830	0	NR	960	0	NR
445	323	NR	575	298	NR	705	21	NR	835	0	NR	965	0	NR
450	403	NR	580	299	NR	710	18	NR	840	0	NR	970	0	NR
455	293	NR	585	298	NR	715	15	NR	845	0	NR	975	0	NR
460	214	NR	590	296	NR	720	13	NR	850	0	NR	980	0	NR
465	180	NR	595	288	NR	725	11	NR	855	0	NR	985	0	NR
470	132	NR	600	286	NR	730	9	NR	860	0	NR	990	0	NR
475	109	NR	605	282	NR	735	8	NR	865	0	NR	995	0	NR
480	110	NR	610	311	NR	740	7	NR	870	0	NR	1000	0	NR
485	121	NR	615	334	NR	745	6	NR	875	0	NR			

**Summary**

$R_f = 90.7$   
 $R_g = 101$   
 $CIE R_a = 93.4$   
 $R_9 = 66.4$



**Color Vector Graphics**

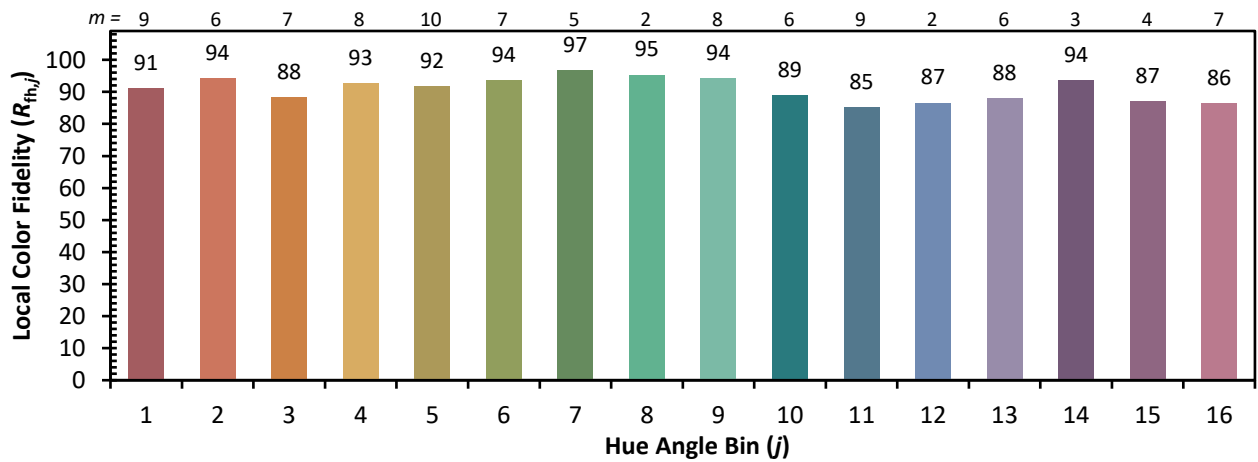
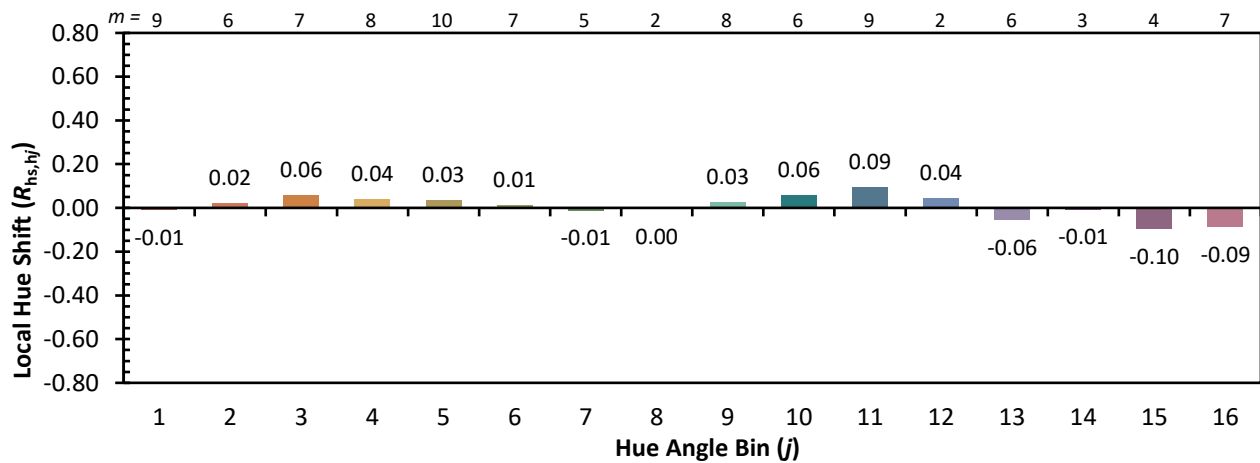
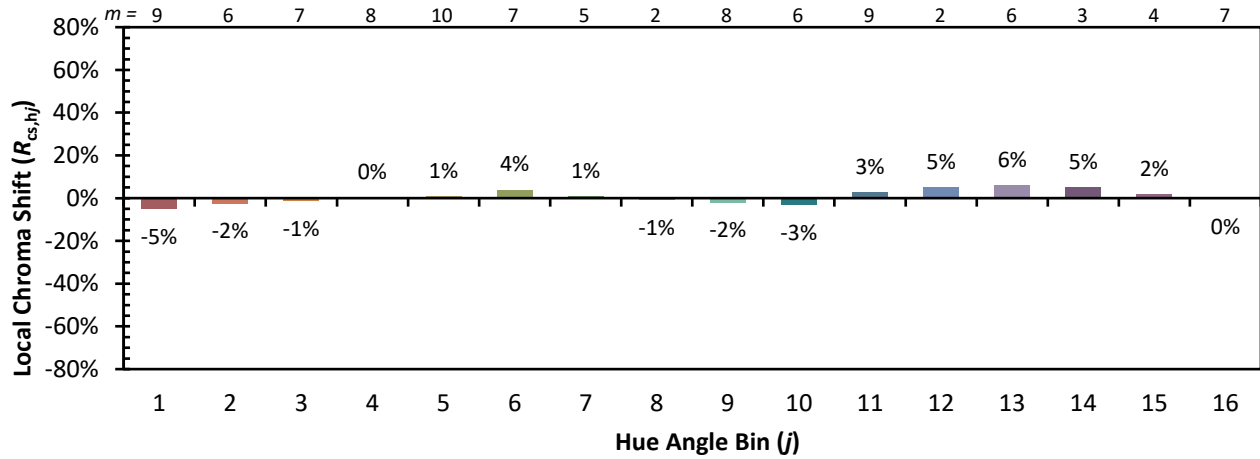


**Individual Sample Fidelity Index ( $R_{f,i}$ )**

CES01 = 86	CES26 = 90	CES51 = 99	CES76 = 83
CES02 = 62	CES27 = 93	CES52 = 97	CES77 = 87
CES03 = 31	CES28 = 94	CES53 = 95	CES78 = 79
CES04 = 69	CES29 = 91	CES54 = 96	CES79 = 94
CES05 = 49	CES30 = 98	CES55 = 95	CES80 = 91
CES06 = 50	CES31 = 92	CES56 = 95	CES81 = 80
CES07 = 42	CES32 = 84	CES57 = 94	CES82 = 96
CES08 = 41	CES33 = 95	CES58 = 95	CES83 = 95
CES09 = 29	CES34 = 90	CES59 = 98	CES84 = 93
CES10 = 74	CES35 = 94	CES60 = 93	CES85 = 82
CES11 = 57	CES36 = 84	CES61 = 93	CES86 = 84
CES12 = 63	CES37 = 92	CES62 = 90	CES87 = 90
CES13 = 43	CES38 = 93	CES63 = 92	CES88 = 97
CES14 = 74	CES39 = 98	CES64 = 91	CES89 = 84
CES15 = 71	CES40 = 96	CES65 = 88	CES90 = 99
CES16 = 47	CES41 = 98	CES66 = 88	CES91 = 74
CES17 = 49	CES42 = 89	CES67 = 87	CES92 = 78
CES18 = 56	CES43 = 89	CES68 = 87	CES93 = 87
CES19 = 71	CES44 = 99	CES69 = 88	CES94 = 75
CES20 = 66	CES45 = 93	CES70 = 84	CES95 = 83
CES21 = 85	CES46 = 95	CES71 = 80	CES96 = 91
CES22 = 78	CES47 = 92	CES72 = 93	CES97 = 93
CES23 = 91	CES48 = 96	CES73 = 78	CES98 = 93
CES24 = 90	CES49 = 93	CES74 = 92	CES99 = 94
CES25 = 71	CES50 = 99	CES75 = 81	



Color Rendition by Hue-Angle Bin



Measure Comparisons



(END OF REPORT)