

Cooper Lighting Solutions Photometric Lab  
1121 Highway 74 South  
Peachtree City, GA 30269



Scaled data based on original data using  
LM-79-2019 Approved Method: Electrical and Photometric Measurements of Solid-  
State Lighting Products

Test Report Prepared for  
Cooper Lighting Solutions

Brand: METALUX

Report Number: P1444844

Luminaire Tested: EHBR1-54-UNV-TA-L940-UPL18

Issue Date: 5/1/2026

**Test Information**

Test Method: LM-79-2019  
Report Number: P1444844  
REPORT IS A COMBINATION OF REPORTS P1444325 AND P1431635  
Test Lab: INNOVATION CENTER  
Issue Date: 5/1/2026  
Manufacturer: COOPER LIGHTING SOLUTIONS  
Product Line: METALUX  
Catalog Number: EHBR1-54-UNV-TA-L940-UPL18  
Description: Elevate Round Highbay at, 54000 lumens, 4000K 90CRI LEDs with TA lens  
Light Source: -  
Ballast/Driver: -

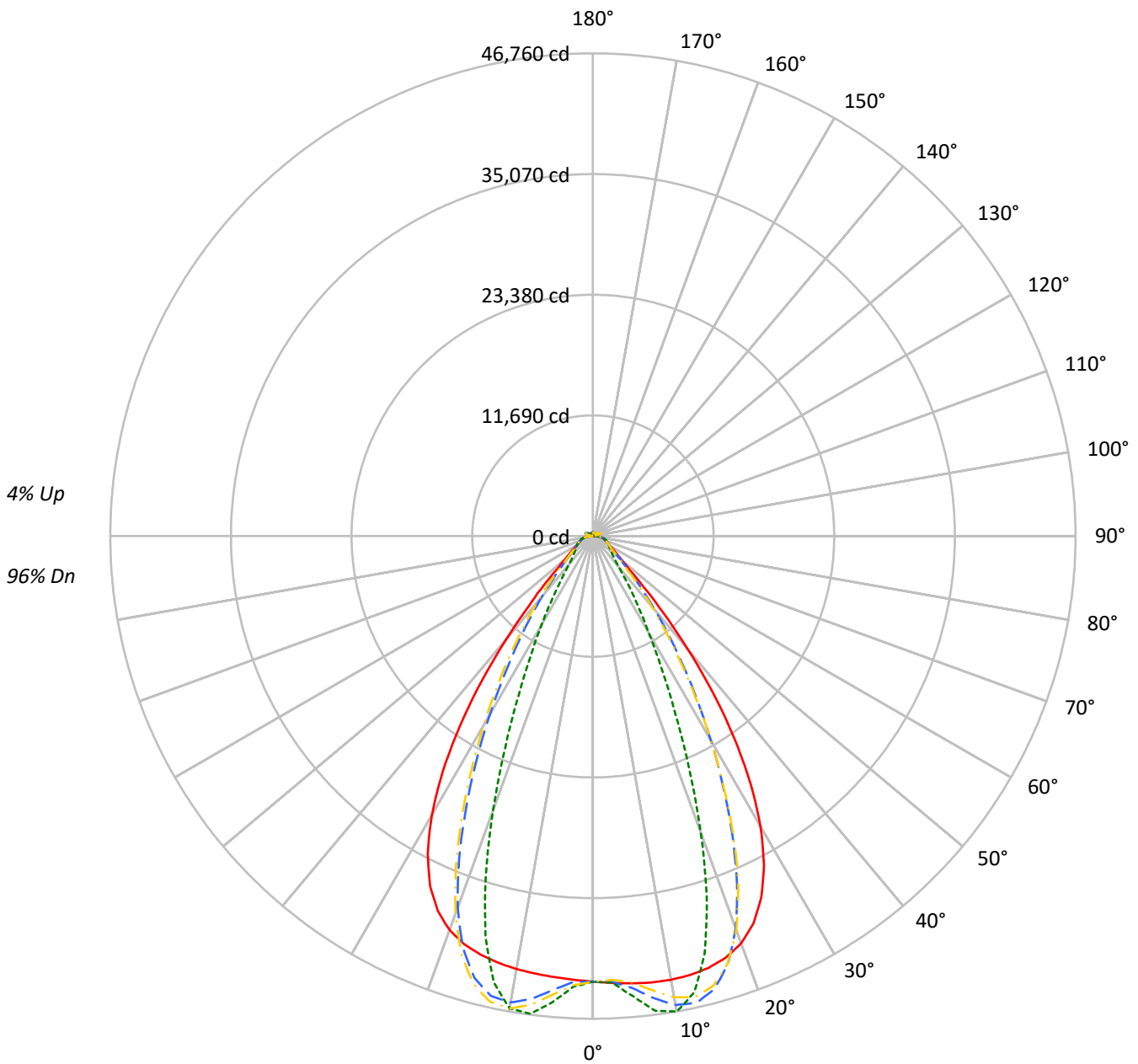
**Summary**

Lumens per Lamp: N/A  
Luminaire Lumens: 51691.4 lumens  
Efficiency: N/A  
Efficacy: 167.9 lumens/watt  
Spacing Criteria (0/90/45): 1.13 / 0.77 / 0.88  
Luminous Opening: Vertical Cylinder (Dia: 1.71' x H: 0.1')  
CIE Type: Direct

Input Watts (W): 307.9  
Input Voltage (V): NR  
Input Current (Ain): NR  
Voltage Rise (V): NR  
Power Factor: NR  
Total Harmonic Distortion (THDi): NR  
Frequency (hertz): 60  
Stabilization Time: NR  
Operation Time: NR  
Ambient Temperature (°C): NR  
Test Distance: 24 FT

TEST NUMBER: P1444844  
CATALOG NUMBER: EHBR1-54-UNV-TA-L940-UPL18

### Luminous Intensity Polar Plot



— 0°-180°    - - 45°-225°    - · - · 90°-270°    - · - · 135°-315°



TEST NUMBER: P1444844  
 CATALOG NUMBER: EHBR1-54-UNV-TA-L940-UPL18

**COEFFICIENT OF UTILIZATION - ZONAL CAVITY METHOD:**

RF	20				20				20				20				20				
RC	80				70				50				30				10			0	
RW	70	50	30	10	70	50	30	10	50	30	10	50	30	10	50	30	10	50	30	10	0
RCR																					
0	118	118	118	118	115	115	115	115	109	109	109	103	103	103	98	98	98	98	98	98	96
1	111	108	105	102	108	105	102	100	100	98	96	96	94	92	92	90	89	89	89	89	87
2	104	98	93	89	102	96	92	88	92	89	85	89	86	83	85	83	81	81	81	81	79
3	98	90	84	80	95	89	83	79	85	81	77	82	79	75	79	76	74	74	74	74	72
4	92	83	77	72	90	82	76	71	79	74	70	77	72	69	74	71	68	68	68	68	66
5	87	77	71	66	85	76	70	65	74	68	64	72	67	63	70	66	62	62	62	62	61
6	82	72	65	60	80	71	64	60	69	63	59	67	62	58	65	61	58	58	58	58	56
7	77	67	60	56	76	66	60	55	64	59	55	63	58	54	61	57	54	54	54	54	52
8	73	63	56	52	72	62	56	51	61	55	51	59	54	50	58	53	50	50	50	50	48
9	70	59	52	48	68	58	52	48	57	51	47	56	51	47	55	50	47	47	47	47	45
10	66	55	49	45	65	55	49	45	54	48	44	53	48	44	52	47	44	44	44	44	42

**AVERAGE LUMINANCE (cd/sqm):**

	0°	90°	180°	270°
0°	202699	202699	202699	202699
5°	203680	209620	200830	212366
10°	205381	220085	200455	218628
15°	206388	199505	200105	191472
20°	204254	148624	197569	137513
25°	193335	93996	186945	85285
30°	168893	56485	162351	51622
35°	129981	35444	122504	31397
40°	82225	22234	75228	20893
45°	42380	17321	41678	17037
50°	24847	15407	24085	15167
55°	19036	14577	18331	14445
60°	16106	14891	15421	14698
65°	15128	15549	14549	15020
70°	14780	16282	14043	15669
75°	15803	17268	14948	16505
80°	16353	19121	14827	17454
85°	15403	18449	12444	15799

**MAXIMUM LUMINANCE 45°-90°:**

Horizontal Angle: 25°  
 Vertical Angle: 45°  
 Luminance: 64857 cd/sqm



TEST NUMBER: P1444844  
 CATALOG NUMBER: EHBR1-54-UNV-TA-L940-UPL18

**ZONAL LUMENS:**

Zone	Lumens	% Fixture
0°-10°	4253.8	8.2
10°-20°	11966.5	23.1
20°-30°	13628.9	26.4
30°-40°	9795.8	19.0
40°-50°	4517.8	8.7
50°-60°	2162.0	4.2
60°-70°	1577.5	3.1
70°-80°	1198.4	2.3
80°-90°	548.1	1.1
90°-100°	62.9	0.1
100°-110°	312.4	0.6
110°-120°	576.1	1.1
120°-130°	365.3	0.7
130°-140°	251.6	0.5
140°-150°	199.9	0.4
150°-160°	147.9	0.3
160°-170°	93.5	0.2
170°-180°	32.9	0.1
0°-30°	29849.2	57.7
0°-40°	39645.1	76.7
0°-60°	46324.9	89.6
0°-90°	49648.9	96.0
90°-120°	951.4	1.8
90°-150°	1768.2	3.4
90°-180°	2042.0	4.0
0°-180°	51691.4	100.0

**CANDELA DISTRIBUTION:**

	0°	90°	180°	270°	360°	Flux
0°	43163	43163	43163	43163	43163	
5°	43489	44757	42880	45343	43489	4156
15°	43299	41855	41981	40170	43299	12200
25°	38609	18771	37333	17031	38609	17502
35°	23856	6505	22484	5762	23856	14641
45°	6857	2802	6743	2756	6857	5832
55°	2572	1970	2477	1952	2572	2375
65°	1579	1623	1519	1568	1579	1577
75°	1113	1216	1053	1163	1113	1158
85°	529	634	428	543	529	497
90°	132	170	30	40	132	84
95°	28	31	28	31	28	27
105°	117	147	81	148	117	154
115°	508	604	532	605	508	470
125°	400	401	450	403	400	364
135°	340	284	364	289	340	264
145°	323	298	341	305	323	204
155°	317	310	334	316	317	147
165°	329	324	340	327	329	93
175°	344	346	350	347	344	33
180°	349	349	349	349	349	



TEST NUMBER: P1444844  
 CATALOG NUMBER: EHBR1-54-UNV-TA-L940-UPL18

**CANDELA DISTRIBUTION (FULL):**

	0°	2.5°	5°	7.5°	10°	12.5°	15°	17.5°	20°	22.5°	25°
0°	43163.3	43163.3	43163.3	43163.3	43163.3	43163.3	43163.3	43163.3	43163.3	43163.3	43163.3
2.5°	43328.2	43324.7	43324.1	43321.1	43320.2	43320.2	43318.8	43315.3	43313.0	43308.1	43302.5
5°	43489.0	43487.1	43488.2	43488.6	43485.5	43478.8	43468.3	43455.3	43438.9	43423.6	43409.8
7.5°	43613.3	43616.4	43620.2	43619.4	43610.0	43594.1	43572.5	43560.4	43567.6	43591.0	43644.8
10°	43636.0	43654.6	43661.8	43659.5	43640.7	43627.1	43632.3	43678.1	43769.1	43890.6	44056.6
12.5°	43547.5	43570.3	43569.4	43562.0	43543.7	43562.3	43628.5	43764.6	43959.8	44199.3	44480.2
15°	43299.2	43328.6	43320.2	43310.5	43298.3	43359.3	43491.5	43728.0	44029.4	44367.1	44712.7
17.5°	42816.8	42852.3	42835.1	42824.0	42813.8	42928.0	43155.3	43501.5	43881.1	44263.1	44590.7
20°	41980.2	42004.0	41962.9	41943.5	41959.9	42183.7	42518.4	42960.6	43360.7	43721.9	43945.9
22.5°	40614.9	40644.4	40567.2	40558.3	40653.6	40997.3	41421.0	41915.2	42291.2	42577.5	42663.8
25°	38608.9	38638.0	38546.2	38601.1	38763.3	39231.4	39736.0	40264.7	40585.5	40797.5	40739.0
27.5°	35901.2	35927.8	35840.8	35952.8	36209.2	36824.4	37418.2	37991.7	38277.6	38426.2	38237.9
30°	32486.4	32541.5	32438.7	32595.0	32986.4	33785.2	34465.5	35108.6	35393.7	35506.8	35213.7
32.5°	28430.6	28509.1	28395.7	28628.3	29174.4	30133.9	30906.7	31625.3	31940.5	32069.7	31738.6
35°	23856.1	23968.7	23838.7	24187.7	24861.3	25929.7	26785.6	27587.8	27961.2	28144.2	27810.6
37.5°	19009.7	19117.0	19046.7	19512.3	20252.0	21359.5	22233.1	23098.5	23520.1	23794.8	23531.9
40°	14251.6	14349.8	14403.1	14935.6	15631.3	16675.2	17514.1	18370.5	18842.2	19187.0	19024.8
42.5°	10058.8	10157.8	10338.9	10852.7	11433.0	12297.0	13015.6	13784.4	14235.1	14602.9	14540.3
45°	6856.9	6971.9	7198.7	7619.5	8039.1	8658.9	9186.7	9784.6	10152.7	10489.6	10493.6
47.5°	4805.0	4885.7	5088.5	5375.8	5649.3	6425.3	6457.1	6751.0	6998.4	7250.3	7282.9
50°	3703.1	3751.7	3859.2	4019.4	4174.3	4375.8	4560.2	4773.1	4925.4	5063.5	5096.5
52.5°	3043.7	3074.6	3129.3	3216.0	3305.9	3415.5	3514.2	3631.1	3714.0	3787.9	3803.4
55°	2572.5	2598.1	2679.5	2695.9	2798.8	2818.6	2862.5	2933.7	2981.8	3026.1	3037.2
57.5°	2216.9	2235.4	2252.7	2289.6	2321.3	2367.4	2404.5	2455.5	2485.9	2517.9	2520.7
60°	1936.2	1949.7	1962.0	1987.6	2009.2	2041.2	2066.8	2101.5	2123.2	2147.3	2150.0
62.5°	1727.5	1737.1	1745.3	1762.2	1777.6	1802.2	1822.5	1851.5	1871.8	1890.3	1894.5
65°	1579.0	1586.1	1591.3	1604.2	1617.6	1638.6	1656.9	1680.6	1695.5	1709.8	1712.7
67.5°	1447.6	1454.3	1459.7	1471.3	1480.7	1496.3	1508.7	1526.4	1537.6	1549.0	1549.3
70°	1296.9	1303.1	1307.3	1318.2	1325.6	1339.1	1349.0	1365.0	1376.5	1389.2	1392.3
72.5°	1192.6	1196.2	1201.8	1211.8	1222.1	1236.6	1249.8	1266.5	1280.4	1293.5	1299.1
75°	1113.2	1117.5	1121.2	1129.7	1136.9	1149.1	1159.0	1174.2	1186.4	1200.4	1207.3
77.5°	998.7	1003.7	1006.8	1015.3	1021.5	1033.2	1040.6	1054.2	1064.1	1076.9	1083.1
80°	860.3	864.9	867.2	875.2	880.1	890.8	898.1	911.1	919.5	932.3	939.8
82.5°	706.9	711.4	712.6	720.2	722.9	731.7	736.9	750.4	760.7	777.3	788.8
85°	529.4	530.9	533.5	531.6	542.3	543.0	555.1	557.3	573.3	577.5	595.7
87.5°	323.7	328.4	330.8	338.2	341.4	348.7	351.0	358.8	363.2	372.1	376.3
90°	132.2	139.3	141.4	149.7	151.7	159.2	160.7	169.0	171.1	179.8	182.7
92.5°	25.3	26.7	28.0	29.8	31.2	33.5	35.4	37.1	38.6	40.8	43.8
95°	28.3	29.9	31.5	33.1	34.7	36.3	37.9	39.5	41.1	42.7	47.1
97.5°	35.0	36.4	37.8	39.1	40.5	41.9	43.3	44.6	46.0	47.3	52.8
100°	44.7	45.9	47.0	48.3	49.4	50.6	51.7	52.9	54.0	55.2	65.4
102.5°	71.4	75.5	79.7	83.8	87.9	91.9	96.1	100.1	104.3	108.4	130.0
105°	117.4	128.5	139.9	150.9	162.2	173.5	184.7	195.6	206.8	218.0	253.4
107.5°	196.3	216.9	237.7	258.5	279.3	300.0	320.8	341.4	362.0	382.5	418.5
110°	356.4	372.8	389.6	406.3	422.9	439.6	456.1	472.4	489.2	505.7	531.8



TEST NUMBER: P1444844  
 CATALOG NUMBER: EHBR1-54-UNV-TA-L940-UPL18

**CANDELA DISTRIBUTION (continued):**

	0°	2.5°	5°	7.5°	10°	12.5°	15°	17.5°	20°	22.5°	25°
112.5°	479.0	486.3	493.8	501.3	508.8	515.9	523.4	530.8	538.2	545.4	563.9
115°	507.7	510.1	512.7	515.0	517.6	519.9	522.3	524.6	527.0	529.2	541.7
117.5°	497.2	496.5	495.7	495.2	494.1	493.4	492.6	491.6	490.6	489.7	496.6
120°	469.2	466.5	464.0	461.2	458.5	455.6	453.0	450.1	447.1	444.0	446.8
122.5°	433.1	430.0	427.1	423.6	420.5	416.8	413.7	409.9	406.7	403.2	403.7
125°	400.5	397.2	394.3	390.8	387.3	383.7	380.3	376.7	373.0	369.3	369.2
127.5°	373.0	370.7	368.4	365.5	362.9	360.1	357.3	354.2	351.6	348.3	347.9
130°	357.4	355.2	352.9	350.3	347.9	345.1	342.3	339.4	336.8	333.7	333.2
132.5°	345.6	344.1	342.2	340.1	338.1	335.5	333.4	330.7	328.5	326.1	325.5
135°	339.6	337.8	336.3	334.4	332.4	329.9	327.6	325.1	322.9	320.3	319.9
137.5°	335.0	333.5	331.9	329.9	328.0	325.6	323.6	321.0	318.8	316.4	315.8
140°	331.1	329.6	328.0	326.1	324.3	322.3	320.1	317.9	315.5	313.2	312.9
142.5°	325.7	324.2	323.1	321.3	319.8	317.8	315.9	313.7	311.9	309.7	309.7
145°	323.2	322.1	321.0	319.6	317.9	316.0	314.3	312.3	310.6	308.7	308.7
147.5°	321.1	320.1	319.4	317.9	316.8	315.0	313.5	311.6	310.1	308.6	308.7
150°	319.4	318.5	317.7	316.5	315.2	313.7	312.3	310.7	309.2	307.6	307.8
152.5°	316.9	315.9	315.2	314.1	312.8	311.2	310.1	308.6	307.2	305.7	305.8
155°	317.0	316.0	315.1	314.0	312.8	311.5	310.2	308.8	307.7	306.2	306.2
157.5°	318.6	317.6	316.9	315.6	314.9	313.6	312.6	311.4	310.3	309.2	309.0
160°	321.8	320.9	320.0	318.8	317.8	316.6	315.7	314.4	313.7	312.5	312.3
162.5°	325.1	324.1	323.2	322.2	321.2	319.9	319.1	318.2	317.2	316.0	316.0
165°	329.1	328.5	327.7	326.8	326.1	325.2	324.5	323.5	322.7	321.7	321.7
167.5°	335.0	334.1	333.5	332.7	331.8	330.9	330.1	329.2	328.6	327.6	327.5
170°	338.9	338.1	337.6	337.2	336.5	335.9	335.4	334.7	334.1	333.4	333.4
172.5°	342.4	341.7	341.4	341.2	340.5	340.1	339.7	339.2	338.9	338.3	338.6
175°	344.1	343.7	343.6	343.2	342.9	342.6	342.5	342.1	342.1	341.6	341.6
177.5°	346.9	346.8	346.8	346.6	346.6	346.4	346.2	345.9	345.7	345.7	345.8
180°	348.9	348.9	348.9	348.9	348.9	348.9	348.9	348.9	348.9	348.9	348.9



TEST NUMBER: P1444844  
 CATALOG NUMBER: EHBR1-54-UNV-TA-L940-UPL18

**CANDELA DISTRIBUTION (continued):**

	27.5°	30°	32.5°	35°	37.5°	40°	42.5°	45°	47.5°	50°	52.5°
0°	43163.3	43163.3	43163.3	43163.3	43163.3	43163.3	43163.3	43163.3	43163.3	43163.3	43163.3
2.5°	43298.3	43293.0	43285.8	43276.7	43268.9	43259.8	43238.1	43231.8	43239.0	43243.8	43253.7
5°	43401.2	43404.2	43405.4	43425.0	43442.0	43484.4	43816.5	43948.4	44050.5	44115.3	44213.7
7.5°	43711.4	43811.2	43909.9	44042.7	44157.2	44311.9	44892.9	45140.2	45316.0	45442.4	45597.9
10°	44237.0	44454.9	44659.2	44898.5	45104.2	45339.8	45880.7	46121.6	46273.7	46384.4	46487.8
12.5°	44766.5	45068.7	45341.8	45608.1	45830.8	46035.0	46225.3	46309.6	46316.8	46320.3	46265.4
15°	45042.3	45331.2	45571.8	45747.9	45878.8	45936.6	45609.3	45437.5	45220.3	45041.5	44747.3
17.5°	44868.2	45041.5	45145.5	45135.2	45081.2	44900.1	43972.6	43462.5	42956.0	42499.6	41901.1
20°	44094.5	44081.2	43990.8	43734.7	43426.1	42946.3	41356.1	40438.7	39551.7	38772.7	37827.6
22.5°	42654.9	42428.4	42112.6	41560.4	40946.9	40108.6	37829.8	36480.4	35245.5	34154.7	32932.7
25°	40569.1	40103.1	39520.7	38644.0	37690.7	36467.9	33659.2	31980.7	30498.2	29212.3	27802.4
27.5°	37899.7	37197.8	36344.1	35130.9	33839.2	32272.7	29158.9	27306.4	25714.9	24336.4	22835.7
30°	34739.4	33826.5	32724.2	31218.3	29660.4	27883.6	24725.5	22849.3	21238.4	19820.1	18318.3
32.5°	31167.9	30098.7	28807.1	27116.8	25432.1	23605.3	20555.3	18739.2	17200.3	15835.9	14476.7
35°	27228.8	26082.2	24715.7	22991.8	21317.1	19541.0	16742.4	15104.9	13746.0	12539.9	11442.4
37.5°	23003.4	21877.6	20578.8	18954.0	17401.1	15791.6	13376.8	12004.6	10864.3	9863.3	9015.8
40°	18610.3	17625.0	16501.2	15096.6	13771.2	12430.9	10448.7	9359.4	8459.4	7696.0	7061.0
42.5°	14270.8	13507.3	12645.5	11535.4	10521.3	9500.6	7975.1	7168.0	6501.4	5951.9	5503.0
45°	10353.9	9843.2	9265.2	8493.5	7791.7	7079.9	5994.0	5426.9	4992.8	4638.5	4338.9
47.5°	7238.0	6941.7	6923.6	6210.4	5695.8	5260.5	4561.1	4202.8	3936.9	3722.1	3532.4
50°	5083.0	4939.7	4761.6	4507.1	4268.2	4022.3	3596.1	3379.5	3223.7	3093.6	2973.6
52.5°	3799.9	3725.5	3630.6	3495.6	3366.2	3227.9	2958.2	2820.3	2771.3	2650.2	2555.1
55°	3035.1	2992.4	2938.5	2859.1	2780.4	2748.9	2517.8	2415.4	2350.5	2302.7	2251.7
57.5°	2521.1	2489.3	2457.3	2403.6	2357.9	2302.7	2180.1	2127.6	2089.0	2060.9	2025.5
60°	2150.4	2131.4	2113.5	2081.9	2057.4	2027.6	1949.7	1920.1	1899.9	1882.9	1860.4
62.5°	1898.0	1888.3	1878.9	1862.2	1849.7	1833.6	1780.3	1766.0	1756.0	1747.5	1733.7
65°	1715.8	1708.8	1703.7	1692.4	1686.2	1676.8	1631.0	1621.4	1615.2	1612.1	1604.2
67.5°	1550.3	1542.9	1539.5	1531.5	1529.0	1523.1	1485.6	1480.4	1478.2	1479.3	1476.4
70°	1395.4	1392.3	1393.9	1392.7	1396.2	1397.3	1374.6	1374.5	1376.9	1381.6	1382.1
72.5°	1302.6	1302.6	1304.4	1305.1	1308.5	1310.2	1291.3	1290.3	1291.4	1295.0	1295.1
75°	1214.3	1215.8	1220.5	1222.1	1226.1	1227.0	1202.0	1199.1	1199.3	1202.7	1201.5
77.5°	1092.1	1097.4	1106.5	1111.3	1119.0	1120.4	1092.4	1089.1	1089.2	1092.5	1089.7
80°	953.4	963.5	978.0	988.1	999.9	1004.8	976.0	969.1	962.7	961.7	956.0
82.5°	806.1	818.4	835.9	844.9	857.6	860.5	812.3	803.2	797.8	798.2	792.9
85°	615.4	624.7	640.5	645.6	653.5	652.8	597.8	574.3	580.5	570.7	578.5
87.5°	386.0	391.5	401.4	402.7	406.3	405.5	350.2	339.3	336.1	336.2	332.2
90°	191.6	195.3	203.9	204.1	209.9	209.1	164.2	159.1	155.2	157.4	151.9
92.5°	47.0	49.8	53.1	56.0	59.2	62.3	60.2	61.8	59.3	55.9	53.6
95°	51.8	56.5	61.1	65.9	70.5	75.2	79.8	84.5	80.1	75.7	71.4
97.5°	58.3	63.9	69.2	74.7	80.2	85.8	91.3	96.8	92.1	87.1	82.5
100°	75.7	86.0	96.1	106.4	116.5	126.8	137.1	147.4	138.3	129.0	120.1
102.5°	151.6	173.5	195.3	216.9	238.6	260.5	282.5	304.4	283.5	262.5	241.7
105°	288.7	323.9	359.1	394.2	429.5	464.7	500.5	535.8	502.5	469.2	435.9
107.5°	454.1	490.0	525.4	561.0	596.8	632.5	668.9	704.7	672.2	639.5	607.1
110°	557.8	583.6	609.7	635.5	661.4	687.3	714.3	740.3	720.6	700.9	681.2



TEST NUMBER: P1444844  
 CATALOG NUMBER: EHBR1-54-UNV-TA-L940-UPL18

**CANDELA DISTRIBUTION (continued):**

	27.5°	30°	32.5°	35°	37.5°	40°	42.5°	45°	47.5°	50°	52.5°
112.5°	582.1	600.7	619.2	637.3	655.6	674.0	693.8	712.5	702.5	692.0	682.2
115°	553.8	566.2	578.3	590.5	602.7	614.6	628.7	641.3	637.6	634.0	630.5
117.5°	503.0	509.6	516.2	522.7	529.1	535.6	544.5	551.3	551.3	551.3	551.3
120°	449.2	451.7	454.0	456.5	458.6	461.0	466.1	469.0	471.0	472.9	475.0
122.5°	404.2	404.8	405.2	405.5	405.9	406.3	409.9	411.0	412.1	413.2	414.3
125°	369.0	368.9	368.7	368.6	368.1	368.0	371.4	371.7	371.2	370.5	369.9
127.5°	347.1	346.6	345.8	345.2	344.1	343.6	346.6	346.7	344.7	342.8	340.8
130°	332.6	332.1	331.4	330.8	330.4	329.8	333.2	333.7	330.9	327.8	325.1
132.5°	324.9	324.5	323.7	323.5	322.9	322.3	326.2	326.7	323.8	320.3	317.3
135°	319.3	319.0	318.5	318.0	317.5	317.4	321.7	322.3	319.5	316.2	313.2
137.5°	315.2	314.9	314.4	314.2	313.7	313.5	318.3	319.2	316.8	314.0	311.5
140°	312.6	312.2	312.0	311.9	311.6	311.6	316.9	318.0	316.1	313.8	311.5
142.5°	309.3	309.5	309.5	309.8	309.8	310.1	316.2	317.6	316.0	314.1	312.6
145°	308.7	309.1	309.2	309.6	309.9	310.4	317.3	319.2	318.1	316.6	315.4
147.5°	308.4	308.7	308.8	309.1	309.5	310.3	317.6	319.6	318.8	317.8	316.8
150°	307.7	308.1	308.3	308.7	309.3	310.0	318.4	320.9	320.1	319.4	318.4
152.5°	305.8	306.0	306.2	306.6	306.9	307.6	318.1	320.9	320.3	319.4	318.8
155°	306.1	306.2	306.2	306.5	306.6	307.3	318.8	321.7	321.2	320.7	320.1
157.5°	308.8	308.7	308.4	308.5	308.6	308.7	321.0	324.3	323.7	323.2	322.7
160°	312.0	311.8	311.5	311.4	311.3	311.4	324.1	327.2	326.8	326.3	325.7
162.5°	315.7	316.0	315.8	315.6	315.6	315.9	328.6	332.1	331.4	330.8	330.3
165°	321.4	321.0	320.9	321.0	320.7	320.7	332.8	335.7	335.4	334.7	334.3
167.5°	327.1	327.2	326.9	326.9	326.8	327.1	338.3	341.1	340.8	340.1	339.8
170°	333.2	333.3	333.1	333.2	333.2	333.5	342.8	345.3	345.0	344.2	343.9
172.5°	338.5	338.7	338.8	338.9	339.0	339.3	347.2	349.5	349.2	348.7	348.2
175°	341.8	341.7	342.0	342.3	342.5	342.6	348.9	350.5	350.3	349.9	349.6
177.5°	346.1	346.1	346.3	346.6	346.8	346.9	350.8	351.7	351.6	351.6	351.4
180°	348.9	348.9	348.9	348.9	348.9	348.9	348.9	348.9	348.9	348.9	348.9



TEST NUMBER: P1444844  
 CATALOG NUMBER: EHBR1-54-UNV-TA-L940-UPL18

**CANDELA DISTRIBUTION (continued):**

	55°	57.5°	60°	62.5°	65°	67.5°	70°	72.5°	75°	77.5°	80°
0°	43163.3	43163.3	43163.3	43163.3	43163.3	43163.3	43163.3	43163.3	43163.3	43163.3	43163.3
2.5°	43255.9	43271.1	43273.4	43291.1	43289.7	43310.8	43307.5	43324.7	43314.6	43328.9	43316.9
5°	44271.9	44364.0	44412.2	44502.1	44530.6	44611.0	44633.7	44707.2	44710.2	44768.5	44755.1
7.5°	45708.2	45844.0	45924.7	46035.9	46092.1	46184.8	46225.6	46294.0	46316.1	46370.5	46374.7
10°	46566.0	46631.9	46678.0	46709.0	46737.3	46750.6	46766.1	46762.0	46766.1	46760.0	46773.4
12.5°	46228.6	46132.3	46068.7	45948.0	45878.1	45744.9	45679.4	45551.3	45504.7	45394.7	45378.9
15°	44520.0	44184.4	43947.3	43602.4	43385.7	43046.4	42847.9	42541.8	42402.0	42158.7	42094.9
17.5°	41405.8	40782.8	40300.7	39682.2	39253.0	38675.1	38311.6	37833.2	37571.1	37185.3	37051.7
20°	37039.7	36117.9	35394.8	34533.3	33916.8	33148.7	32656.9	32036.7	31676.6	31202.8	31010.7
22.5°	31913.9	30766.3	29863.1	28845.3	28101.5	27245.5	26656.3	25985.3	25593.5	25078.7	24850.8
25°	26630.6	25365.1	24360.9	23288.7	22502.8	21644.6	21055.4	20396.1	19990.8	19502.0	19275.6
27.5°	21577.7	20296.6	19326.2	18329.4	17608.4	16834.1	16302.4	15726.8	15367.0	14949.8	14736.8
30°	17118.5	15988.7	15162.9	14335.6	13735.8	13107.0	12665.2	12188.2	11872.5	11515.3	11312.3
32.5°	13485.7	12613.4	11966.8	11310.3	10819.5	10293.9	9912.1	9491.2	9206.3	8887.3	8703.5
35°	10680.5	10002.7	9486.9	8946.6	8524.8	8077.3	7740.9	7377.6	7122.0	6847.3	6688.6
37.5°	8438.7	7899.7	7475.3	7026.5	6680.1	6309.3	6184.4	5767.5	5502.6	5283.5	5131.6
40°	6622.7	6194.1	5843.0	5499.7	5217.2	4936.0	4710.3	4487.6	4316.6	4159.8	4051.4
42.5°	5171.8	4861.3	4604.8	4353.4	4147.3	3942.4	3778.9	3625.5	3510.3	3407.8	3337.9
45°	4111.4	3897.8	3719.6	3542.5	3397.1	3260.3	3150.3	3052.4	2978.0	2916.4	2872.7
47.5°	3377.6	3231.3	3105.6	2986.1	2887.4	2797.8	2724.1	2700.1	2620.2	2566.2	2545.7
50°	2870.5	2782.2	2686.7	2598.5	2532.6	2467.0	2419.2	2372.3	2342.4	2317.7	2310.1
52.5°	2492.0	2424.5	2371.4	2315.5	2272.0	2225.3	2192.3	2161.1	2144.7	2131.7	2130.1
55°	2210.6	2163.4	2128.3	2090.8	2064.7	2037.3	2020.3	2003.8	1996.6	1990.0	1990.5
57.5°	1997.7	1966.1	1943.3	1919.0	1904.9	1891.8	1887.4	1883.3	1885.6	1886.5	1890.2
60°	1842.5	1822.0	1807.7	1793.7	1787.8	1783.6	1786.8	1790.5	1798.1	1804.1	1809.5
62.5°	1723.6	1712.0	1704.9	1697.5	1696.8	1697.1	1703.5	1709.8	1719.2	1726.2	1731.5
65°	1601.3	1594.6	1592.4	1587.5	1589.9	1591.3	1599.1	1603.8	1613.2	1618.9	1625.6
67.5°	1477.6	1476.0	1477.5	1477.5	1481.8	1485.5	1492.9	1498.3	1506.3	1511.4	1516.8
70°	1386.3	1386.9	1390.3	1390.9	1395.6	1398.1	1404.5	1408.0	1415.3	1419.5	1426.2
72.5°	1297.5	1296.1	1296.9	1294.8	1296.4	1295.7	1299.3	1301.0	1307.1	1310.5	1318.5
75°	1202.9	1198.9	1198.0	1193.7	1193.8	1190.8	1192.2	1192.0	1196.0	1197.7	1203.4
77.5°	1088.7	1082.0	1078.8	1071.7	1071.5	1068.8	1071.7	1073.3	1080.4	1083.8	1090.3
80°	952.1	941.6	936.8	928.5	929.9	929.4	936.5	941.7	950.4	952.0	960.2
82.5°	791.3	780.6	775.5	767.4	769.3	769.4	775.9	777.0	784.4	787.7	797.3
85°	566.6	570.7	559.5	560.2	557.8	562.2	566.6	572.0	578.3	588.7	596.7
87.5°	333.7	332.2	336.2	336.7	342.5	345.5	354.8	360.1	370.5	378.6	393.3
90°	152.0	146.6	149.7	147.9	153.4	151.8	156.8	154.1	160.2	160.7	168.6
92.5°	49.9	47.6	44.1	41.5	38.1	35.8	33.7	32.9	31.0	30.3	28.2
95°	67.0	62.7	58.3	53.9	49.7	45.3	43.7	42.1	40.5	38.9	37.3
97.5°	77.8	73.0	68.4	63.6	59.0	54.3	53.3	52.2	51.1	50.1	49.0
100°	110.9	101.8	92.8	83.7	74.6	65.6	64.7	63.9	63.1	62.2	61.3
102.5°	221.0	200.0	179.3	158.6	137.9	117.0	113.4	109.8	106.2	102.6	99.0
105°	402.6	369.2	336.0	302.8	269.6	236.4	226.5	216.3	206.5	196.6	186.8
107.5°	574.5	541.8	509.4	477.1	444.7	412.3	396.5	380.9	365.0	349.4	333.8
110°	661.3	641.6	622.2	602.3	582.9	563.5	548.3	533.4	518.3	503.2	488.4



TEST NUMBER: P1444844  
 CATALOG NUMBER: EHBR1-54-UNV-TA-L940-UPL18

**CANDELA DISTRIBUTION (continued):**

	55°	57.5°	60°	62.5°	65°	67.5°	70°	72.5°	75°	77.5°	80°
112.5°	672.0	662.0	651.8	641.9	632.0	622.1	614.7	607.2	600.0	592.5	585.0
115°	626.8	623.3	619.7	616.5	613.1	609.6	608.8	608.3	607.3	606.8	606.2
117.5°	551.3	551.3	551.3	551.4	551.6	551.8	555.4	558.8	562.5	566.3	570.3
120°	476.8	478.7	480.5	482.8	484.8	487.0	491.5	496.5	501.2	506.5	511.6
122.5°	415.2	416.3	417.2	418.5	419.6	420.8	425.3	430.0	434.7	439.6	444.8
125°	368.7	368.1	367.3	366.4	365.7	365.3	368.7	372.3	376.1	380.1	383.8
127.5°	338.7	336.5	334.4	332.5	330.3	328.5	330.1	331.9	333.7	335.9	337.8
130°	322.0	319.1	315.8	313.1	309.9	307.1	307.2	307.4	307.6	308.1	308.6
132.5°	314.0	310.6	307.3	303.9	300.5	297.2	296.3	295.3	294.3	293.7	293.3
135°	309.9	307.0	303.5	300.3	296.8	293.9	292.4	290.9	289.5	288.3	286.9
137.5°	308.7	306.1	303.3	300.7	297.8	295.2	293.2	291.7	289.8	288.6	287.0
140°	309.2	307.1	304.6	302.3	299.8	297.8	296.0	294.7	293.0	291.8	290.5
142.5°	310.5	308.7	306.8	305.1	303.2	301.4	299.8	298.4	296.9	295.8	294.3
145°	313.9	312.7	311.2	309.8	308.3	307.0	305.5	304.5	303.3	302.1	301.2
147.5°	315.7	314.6	313.6	312.5	311.3	310.1	309.0	308.5	307.2	306.5	305.6
150°	317.4	316.4	315.4	314.6	313.4	312.6	311.6	311.0	310.1	309.7	308.9
152.5°	317.8	316.9	316.0	315.4	314.2	313.4	312.7	312.1	311.4	310.9	310.1
155°	319.3	318.6	317.9	317.2	316.2	315.7	315.0	314.2	313.5	312.8	312.1
157.5°	322.1	321.4	320.6	320.1	319.2	318.5	317.9	317.2	316.5	315.9	315.2
160°	325.1	324.6	323.8	323.2	322.5	321.9	321.0	320.4	319.6	319.0	318.0
162.5°	329.5	328.7	328.1	327.4	326.4	325.9	325.1	324.5	323.8	323.2	322.3
165°	333.6	333.0	332.3	331.7	331.2	330.5	329.7	329.2	328.1	327.6	326.6
167.5°	339.1	338.7	338.0	337.5	336.8	336.1	335.6	334.8	334.1	333.3	332.3
170°	343.5	342.7	342.2	341.4	340.9	340.1	339.6	338.8	338.1	337.7	336.7
172.5°	347.8	347.4	346.9	346.5	345.7	345.3	344.9	344.3	343.8	343.1	342.7
175°	349.5	349.4	349.2	348.7	348.5	348.2	347.9	347.7	347.4	347.2	346.8
177.5°	351.4	351.2	351.2	351.0	350.8	350.8	350.5	350.4	350.1	349.8	349.7
180°	348.9	348.9	348.9	348.9	348.9	348.9	348.9	348.9	348.9	348.9	348.9



TEST NUMBER: P1444844  
 CATALOG NUMBER: EHBR1-54-UNV-TA-L940-UPL18

**CANDELA DISTRIBUTION (continued):**

	82.5°	85°	87.5°	90°	92.5°	95°	97.5°	100°	102.5°	105°	107.5°
0°	43163.3	43163.3	43163.3	43163.3	43163.3	43163.3	43163.3	43163.3	43163.3	43163.3	43163.3
2.5°	43329.3	43318.4	43323.6	43303.3	43308.1	43283.6	43281.4	43253.7	43251.0	43224.9	43215.1
5°	44796.4	44772.3	44799.5	44757.1	44765.4	44710.2	44705.6	44634.2	44609.6	44520.4	44481.8
7.5°	46408.7	46399.7	46416.3	46380.8	46379.6	46330.4	46310.1	46246.0	46206.4	46112.6	46052.8
10°	46762.0	46770.3	46756.7	46760.0	46740.8	46735.5	46715.9	46703.4	46671.3	46646.9	46611.2
12.5°	45295.2	45304.0	45248.1	45283.6	45255.5	45321.0	45315.7	45392.8	45404.7	45502.2	45539.2
15°	41905.3	41894.8	41787.5	41855.1	41818.8	41962.4	41994.6	42187.8	42291.2	42539.3	42691.7
17.5°	36784.4	36756.8	36605.6	36687.9	36646.0	36857.9	36928.8	37238.0	37430.7	37830.5	38115.4
20°	30680.0	30627.1	30450.2	30546.6	30503.4	30744.0	30845.4	31219.0	31467.5	31997.1	32373.8
22.5°	24499.8	24416.1	24242.9	24333.0	24292.2	24541.4	24673.3	25048.1	25332.9	25876.5	26316.3
25°	18950.0	18875.5	18708.0	18771.0	18755.8	18966.6	19084.1	19438.6	19718.4	20236.2	20655.9
27.5°	14453.6	14376.0	14224.7	14269.4	14254.0	14433.6	14544.3	14840.5	15081.2	15517.1	15885.7
30°	11062.2	10968.5	10840.3	10864.9	10854.3	10999.9	11103.3	11352.7	11559.0	11927.4	12244.9
32.5°	8479.1	8385.1	8267.1	8278.7	8263.1	8377.4	8462.5	8679.4	8859.2	9172.4	9448.8
35°	6487.7	6597.5	6345.8	6505.3	6339.2	6583.0	6495.3	6630.9	6785.5	7049.5	7280.0
37.5°	4987.5	4910.9	4846.0	4839.2	4838.9	4895.3	4962.0	5092.6	5228.9	5425.5	5628.6
40°	3952.3	3898.6	3856.6	3853.7	3856.6	3896.8	3946.1	4036.4	4136.1	4277.4	4426.6
42.5°	3278.1	3242.4	3217.2	3215.4	3223.4	3251.8	3286.1	3339.7	3404.6	3496.1	3598.5
45°	2837.2	2817.4	2803.3	2802.5	2806.2	2821.0	2840.7	2874.1	2915.3	2972.4	3037.2
47.5°	2527.8	2523.0	2514.2	2514.5	2510.5	2516.7	2518.9	2537.6	2559.5	2602.6	2687.1
50°	2302.6	2302.6	2296.5	2296.2	2290.5	2290.1	2285.3	2292.7	2302.9	2329.6	2356.7
52.5°	2124.5	2123.9	2117.4	2116.0	2110.0	2109.6	2105.5	2108.4	2109.8	2123.2	2139.4
55°	1985.3	1981.2	1972.6	1969.9	1967.4	1971.0	1969.4	1969.5	1967.7	1973.4	1978.2
57.5°	1885.6	1880.2	1872.0	1869.5	1868.9	1873.1	1873.3	1871.8	1864.3	1859.2	1851.9
60°	1806.6	1801.1	1792.3	1790.1	1791.4	1797.1	1796.8	1791.9	1780.7	1771.0	1759.7
62.5°	1728.9	1726.7	1722.2	1721.6	1720.5	1721.4	1717.4	1712.3	1701.3	1690.8	1678.5
65°	1624.8	1625.9	1622.6	1623.0	1619.0	1618.4	1612.3	1607.4	1596.2	1586.7	1574.1
67.5°	1516.6	1517.5	1514.8	1514.8	1512.6	1513.0	1509.3	1504.7	1495.2	1487.6	1477.8
70°	1427.6	1429.8	1428.2	1428.7	1426.2	1425.1	1419.4	1414.9	1405.2	1398.8	1389.9
72.5°	1320.9	1325.6	1325.5	1326.7	1322.8	1320.9	1314.0	1308.4	1299.6	1294.4	1287.4
75°	1205.6	1211.9	1213.7	1216.4	1211.0	1208.1	1200.5	1196.0	1188.9	1185.9	1181.2
77.5°	1093.2	1100.1	1106.7	1112.8	1103.9	1096.1	1086.7	1079.5	1069.2	1065.2	1058.1
80°	967.0	979.2	993.7	1005.9	990.1	974.0	958.6	947.0	933.4	927.8	918.9
82.5°	802.2	814.7	823.0	830.8	819.8	808.2	793.1	783.0	768.3	762.9	752.5
85°	609.5	625.0	630.0	634.1	627.1	620.8	606.8	587.7	578.5	563.9	556.4
87.5°	400.9	410.2	411.9	413.4	409.1	406.0	396.9	387.9	372.1	360.5	346.5
90°	167.5	173.1	168.7	170.4	165.6	166.9	158.5	156.1	143.8	139.7	128.8
92.5°	27.2	25.4	24.1	22.6	24.8	25.5	27.5	28.2	30.2	31.0	32.9
95°	35.7	34.1	32.5	30.9	32.2	33.4	34.8	36.1	37.3	38.6	39.9
97.5°	48.0	47.0	45.8	44.8	45.6	46.3	47.0	47.8	48.4	49.2	50.0
100°	60.5	59.6	58.8	57.9	57.9	57.9	57.9	57.9	57.9	57.9	57.9
102.5°	95.4	91.8	88.2	84.6	87.0	89.4	91.9	94.3	96.8	99.2	101.8
105°	176.9	167.0	157.2	147.3	156.8	166.4	175.9	185.5	195.0	204.9	214.4
107.5°	318.0	302.4	286.8	271.2	288.8	306.2	323.6	341.0	358.4	375.8	393.4
110°	473.5	458.6	443.7	428.9	447.4	465.8	484.3	502.7	521.4	539.9	558.6



TEST NUMBER: P1444844  
 CATALOG NUMBER: EHBR1-54-UNV-TA-L940-UPL18

**CANDELA DISTRIBUTION (continued):**

	82.5°	85°	87.5°	90°	92.5°	95°	97.5°	100°	102.5°	105°	107.5°
112.5°	577.7	570.5	563.3	556.1	568.0	579.9	591.8	604.0	615.9	627.9	639.9
115°	605.7	605.2	604.8	604.4	609.9	615.6	621.2	627.0	632.8	638.4	644.3
117.5°	574.0	577.8	581.9	585.9	587.7	589.5	591.5	593.3	595.4	597.4	599.4
120°	516.8	521.7	527.1	532.5	531.8	531.0	530.5	529.7	529.5	529.0	528.9
122.5°	449.9	454.9	460.3	465.5	464.0	462.4	461.0	459.6	458.4	457.2	456.0
125°	388.2	392.3	396.7	401.2	399.6	398.0	396.5	395.4	394.2	392.9	392.1
127.5°	340.4	342.9	345.3	348.0	347.2	346.5	346.2	345.6	345.5	345.4	345.5
130°	309.3	310.1	311.4	312.3	312.5	312.7	313.4	313.9	314.7	315.4	316.7
132.5°	293.2	292.8	292.9	292.9	293.7	294.6	295.9	297.0	298.8	300.1	302.2
135°	286.2	285.5	284.9	284.5	285.8	286.9	288.4	290.1	292.1	294.2	296.4
137.5°	286.1	285.0	284.3	283.4	284.7	285.9	287.5	289.2	291.0	293.1	295.5
140°	289.6	288.4	288.0	287.1	288.4	289.5	291.1	292.7	294.6	296.7	299.0
142.5°	293.6	292.4	291.8	291.2	292.2	293.3	295.0	296.3	298.1	299.7	301.9
145°	300.3	299.3	299.0	298.4	299.1	299.9	300.9	302.0	303.4	304.6	306.4
147.5°	304.9	304.3	304.0	303.4	304.1	304.6	305.4	306.0	307.2	308.1	309.4
150°	308.7	308.0	307.6	307.3	307.7	307.9	308.6	308.7	309.5	310.1	311.2
152.5°	309.9	309.1	309.1	308.7	308.8	309.0	309.5	309.8	310.3	310.7	311.7
155°	311.7	311.3	310.8	310.3	310.1	310.1	310.3	310.2	310.6	310.7	311.0
157.5°	314.8	314.2	313.9	313.2	313.0	312.7	312.6	312.4	312.6	312.1	312.2
160°	317.6	316.7	316.1	315.5	315.4	314.9	315.1	314.6	314.6	314.5	314.6
162.5°	321.9	321.2	320.8	320.1	319.8	319.2	318.8	318.3	317.9	317.6	317.4
165°	325.9	325.1	324.5	323.7	323.4	323.0	322.7	322.3	322.2	321.7	321.8
167.5°	331.9	331.0	330.5	329.7	329.3	328.6	328.3	327.8	327.3	326.8	326.7
170°	336.3	335.6	335.2	334.6	334.3	333.8	333.6	333.2	333.0	332.9	332.9
172.5°	342.3	341.6	341.3	340.9	340.5	340.2	340.1	339.9	339.6	339.6	339.4
175°	346.6	346.3	346.1	345.8	345.5	345.5	345.1	345.0	344.9	344.7	344.5
177.5°	349.3	349.0	348.9	348.8	348.6	348.6	348.6	348.6	348.6	348.4	348.3
180°	348.9	348.9	348.9	348.9	348.9	348.9	348.9	348.9	348.9	348.9	348.9



TEST NUMBER: P1444844  
 CATALOG NUMBER: EHBR1-54-UNV-TA-L940-UPL18

**CANDELA DISTRIBUTION (continued):**

	110°	112.5°	115°	117.5°	120°	122.5°	125°	127.5°	130°	132.5°	135°
0°	43163.3	43163.3	43163.3	43163.3	43163.3	43163.3	43163.3	43163.3	43163.3	43163.3	43163.3
2.5°	43187.2	43175.8	43145.9	43131.2	43103.5	43089.5	43068.0	43054.0	43036.6	43023.7	43017.0
5°	44383.7	44328.5	44217.9	44149.7	44030.2	43951.5	43832.8	43745.8	43623.2	43532.8	43417.0
7.5°	45940.6	45855.8	45714.0	45606.5	45439.3	45311.5	45123.9	44973.8	44766.5	44594.4	44382.6
10°	46574.4	46524.9	46461.3	46392.1	46299.5	46208.6	46080.5	45950.0	45775.9	45602.8	45376.6
12.5°	45637.6	45684.1	45775.9	45818.8	45889.0	45912.9	45945.0	45929.9	45901.5	45830.8	45728.2
15°	42984.4	43178.8	43486.0	43698.4	43996.1	44205.2	44481.8	44659.8	44864.9	44987.4	45103.9
17.5°	38620.2	38996.2	39538.1	39970.5	40551.0	41023.0	41601.2	42055.5	42580.1	42982.6	43411.0
20°	33030.3	33556.8	34304.9	34940.3	35781.4	36494.7	37408.5	38173.9	39066.9	39811.2	40614.5
22.5°	27014.0	27633.3	28490.6	29256.9	30261.3	31158.5	32303.4	33315.5	34522.6	35604.0	36800.3
25°	21338.3	21945.3	22818.5	23612.1	24696.4	25684.7	26935.5	28096.6	29497.4	30803.6	32303.4
27.5°	16471.1	17010.3	17777.9	18492.2	19485.3	20455.5	21724.9	22963.0	24457.7	25861.6	27477.8
30°	12720.4	13157.7	13772.8	14347.4	15144.6	15938.1	17068.8	18213.9	19701.2	21156.0	22812.9
32.5°	9857.9	10230.8	10744.3	11210.8	11825.0	12423.3	13255.9	14171.0	15475.7	16869.1	18471.3
35°	7631.1	7950.1	8387.1	8789.0	9294.2	9769.1	10390.5	11043.5	12039.2	13211.3	14645.1
37.5°	6083.9	6214.0	6525.9	6855.1	7274.8	7665.0	8151.1	8633.9	9346.3	10271.1	11442.4
40°	4626.7	4833.3	5087.2	5346.4	5664.1	5977.3	6510.4	6767.1	7236.2	7900.1	8809.2
42.5°	3733.2	3878.4	4057.1	4237.4	4458.8	4676.9	4946.6	5221.2	5571.9	6021.5	6668.2
45°	3124.0	3218.7	3333.9	3454.1	3599.4	3748.2	3928.8	4117.4	4355.0	4631.4	5024.1
47.5°	2717.1	2769.4	2844.6	2926.6	3026.3	3129.3	3246.7	3366.9	3514.5	3678.5	3902.1
50°	2399.4	2443.1	2501.5	2556.2	2625.1	2730.7	2777.2	2843.6	2932.4	3028.9	3153.9
52.5°	2169.5	2198.6	2235.2	2266.8	2310.3	2349.8	2401.6	2447.3	2508.8	2566.7	2647.5
55°	1990.5	2001.1	2021.9	2042.2	2072.3	2099.3	2134.8	2164.7	2203.9	2238.6	2289.4
57.5°	1852.3	1853.2	1862.8	1873.4	1892.7	1909.7	1934.2	1953.8	1981.1	2003.1	2033.7
60°	1752.9	1747.7	1749.5	1753.3	1764.2	1775.2	1790.8	1803.7	1820.7	1833.2	1850.3
62.5°	1670.3	1661.9	1660.0	1659.1	1664.5	1668.5	1677.0	1683.2	1693.0	1698.4	1707.5
65°	1565.8	1556.0	1552.2	1547.6	1549.3	1548.0	1551.2	1551.4	1556.3	1557.4	1562.7
67.5°	1471.1	1462.9	1457.9	1451.9	1449.2	1444.8	1442.9	1438.7	1438.1	1434.6	1433.8
70°	1384.7	1376.7	1372.5	1366.9	1364.0	1358.2	1354.8	1347.7	1343.6	1337.0	1333.4
72.5°	1284.7	1280.3	1279.0	1275.1	1274.1	1271.0	1269.6	1264.5	1261.6	1256.0	1252.9
75°	1180.2	1176.6	1176.2	1172.4	1172.1	1168.3	1167.3	1162.0	1159.2	1153.7	1151.3
77.5°	1055.8	1050.3	1048.8	1044.3	1045.4	1043.4	1045.1	1041.1	1039.3	1033.8	1032.0
80°	915.6	908.6	905.7	899.8	901.5	898.7	901.5	901.1	903.1	898.7	897.9
82.5°	749.6	742.0	740.5	736.4	739.1	739.4	745.3	742.1	743.4	739.2	740.9
85°	545.5	539.7	531.7	530.6	525.5	530.8	523.9	528.5	521.0	526.3	519.3
87.5°	338.2	326.4	320.1	311.6	308.4	300.3	296.9	291.0	292.7	290.0	291.6
90°	126.9	117.3	115.7	108.2	108.2	101.6	103.2	98.8	101.2	96.6	99.4
92.5°	33.7	35.1	37.5	40.6	42.8	45.3	47.8	50.8	52.9	55.9	58.0
95°	41.1	42.4	45.7	49.2	52.5	56.0	59.4	62.9	66.2	69.7	73.0
97.5°	50.8	51.5	54.9	58.3	61.7	65.1	68.5	72.3	75.6	79.1	82.5
100°	57.9	58.1	67.8	77.4	87.1	97.0	106.6	116.3	126.2	135.8	145.5
102.5°	104.3	106.7	131.1	155.6	180.0	204.4	229.0	253.6	278.0	302.7	327.3
105°	224.0	233.7	270.9	308.4	345.5	382.9	420.4	457.9	495.3	532.7	570.2
107.5°	410.9	428.5	462.3	496.1	529.7	563.6	597.6	631.4	665.2	699.1	733.3
110°	577.1	595.7	618.3	641.2	664.0	686.7	709.4	732.3	755.3	778.1	801.2



TEST NUMBER: P1444844  
 CATALOG NUMBER: EHBR1-54-UNV-TA-L940-UPL18

**CANDELA DISTRIBUTION (continued):**

	110°	112.5°	115°	117.5°	120°	122.5°	125°	127.5°	130°	132.5°	135°
112.5°	651.8	664.1	677.2	690.8	704.1	717.6	731.1	744.6	758.3	771.9	785.5
115°	650.3	656.3	661.4	667.0	672.4	677.9	683.5	689.1	695.0	700.6	706.4
117.5°	601.5	603.9	604.8	606.1	607.2	608.9	610.0	611.7	613.3	614.9	616.2
120°	528.4	528.1	527.8	527.5	527.1	526.9	526.8	526.8	526.8	526.8	526.8
122.5°	454.9	454.1	453.7	453.6	453.5	453.6	453.6	454.0	454.1	454.3	454.4
125°	391.2	390.5	391.9	393.4	395.0	396.7	398.3	400.2	402.0	403.9	405.7
127.5°	345.4	345.7	348.4	351.2	354.1	357.2	360.2	363.3	366.2	369.6	372.4
130°	317.8	319.1	322.3	326.1	329.4	333.2	336.9	340.8	344.1	347.9	351.5
132.5°	303.8	306.1	309.3	312.8	316.3	319.9	323.6	327.2	330.8	334.6	337.9
135°	298.8	301.4	304.5	307.9	311.1	314.6	318.0	321.5	324.5	328.1	331.2
137.5°	297.7	300.3	303.2	306.0	308.7	311.8	314.5	317.5	320.2	323.2	325.9
140°	301.1	303.7	305.5	307.7	309.6	311.6	313.4	315.7	317.4	319.6	321.4
142.5°	303.8	306.3	307.3	309.0	310.4	312.4	313.8	315.5	316.7	318.2	319.4
145°	307.9	309.9	310.5	311.4	312.1	313.0	313.6	314.5	315.0	315.6	316.2
147.5°	310.7	312.1	312.3	312.9	313.4	313.7	314.2	314.6	314.8	315.3	315.6
150°	311.8	312.9	312.8	313.2	313.1	313.4	313.2	313.5	313.3	313.6	313.5
152.5°	312.2	313.0	312.6	312.8	312.5	312.5	312.1	312.3	311.9	311.9	311.9
155°	311.2	311.4	311.3	311.2	311.0	311.0	310.7	311.0	311.0	310.8	311.0
157.5°	312.2	312.1	312.0	311.9	311.6	311.7	311.5	311.6	311.6	312.1	312.3
160°	314.3	314.3	314.1	314.0	313.9	313.8	313.6	313.9	314.0	314.4	314.7
162.5°	316.9	316.8	316.5	316.4	316.3	316.4	316.4	316.8	316.9	317.2	317.6
165°	321.7	321.8	321.3	321.3	321.1	321.1	321.0	321.1	321.4	321.6	321.9
167.5°	326.5	326.4	326.4	326.5	326.5	326.7	326.9	327.6	327.7	328.3	328.5
170°	332.7	332.9	332.6	332.7	332.5	332.5	332.6	332.7	332.8	333.1	333.1
172.5°	339.4	339.4	339.2	338.9	338.7	338.7	338.5	338.6	338.4	338.3	338.1
175°	344.2	344.1	344.1	344.0	343.9	343.6	343.4	343.0	342.9	342.8	342.8
177.5°	348.2	347.8	347.7	347.7	347.5	347.3	347.3	347.1	347.1	347.1	346.9
180°	348.9	348.9	348.9	348.9	348.9	348.9	348.9	348.9	348.9	348.9	348.9



TEST NUMBER: P1444844  
 CATALOG NUMBER: EHBR1-54-UNV-TA-L940-UPL18

**CANDELA DISTRIBUTION (continued):**

	137.5°	140°	142.5°	145°	147.5°	150°	152.5°	155°	157.5°	160°	162.5°
0°	43163.3	43163.3	43163.3	43163.3	43163.3	43163.3	43163.3	43163.3	43163.3	43163.3	43163.3
2.5°	43008.3	43007.8	43003.6	43005.6	43006.3	43009.4	43013.1	43017.0	43017.7	43020.8	43021.4
5°	43330.2	43223.8	43145.1	43058.5	42993.4	42934.9	42895.9	42864.8	42852.8	42855.9	42863.1
7.5°	44202.9	43983.4	43802.1	43596.1	43424.2	43242.3	43091.5	42948.1	42843.7	42765.8	42722.3
10°	45160.7	44893.2	44637.3	44339.1	44056.2	43754.4	43481.0	43205.7	42976.2	42776.9	42630.4
12.5°	45585.7	45396.7	45175.4	44894.0	44591.4	44243.1	43891.3	43514.3	43163.6	42838.1	42575.6
15°	45135.7	45136.1	45055.4	44920.4	44710.2	44431.9	44096.7	43703.7	43290.0	42867.9	42482.2
17.5°	43707.2	43976.7	44126.6	44221.5	44192.4	44089.8	43876.6	43574.7	43189.0	42739.4	42268.8
20°	41254.1	41889.8	42343.0	42750.6	42979.0	43130.8	43115.6	42992.8	42718.1	42335.8	41845.7
22.5°	37817.6	38884.7	39726.6	40511.7	41062.3	41510.2	41723.1	41813.5	41689.1	41422.7	40962.5
25°	33643.8	35094.5	36332.5	37534.0	38435.3	39209.9	39675.3	40003.3	40029.4	39890.2	39479.6
27.5°	29005.8	30718.2	32285.2	33882.0	35149.4	36262.9	36993.5	37528.3	37698.2	37675.7	37302.9
30°	24373.7	26171.5	27898.7	29760.7	31329.0	32751.6	33716.7	34440.0	34718.6	34772.0	34413.4
32.5°	19999.3	21772.0	23494.4	25441.1	27167.0	28797.4	29937.6	30796.7	31120.7	31197.1	30803.6
35°	16029.1	17664.7	19301.5	21188.1	22904.1	24592.5	25793.9	26693.3	26995.9	27047.0	26591.6
37.5°	12586.3	13979.8	15406.1	17098.9	18674.7	20260.3	21401.9	22247.1	22467.6	22454.0	21938.6
40°	9687.5	10770.8	11916.9	13310.5	14620.6	15961.0	16925.0	17623.8	17739.6	17653.8	17112.3
42.5°	7284.4	8066.9	8897.8	9938.0	10910.1	11913.3	12614.7	13133.4	13149.9	13014.3	12528.2
45°	5426.9	6190.3	6538.8	7167.7	7793.9	8460.9	8889.1	9209.5	9159.9	9040.6	8671.3
47.5°	4137.1	4430.4	4741.6	5131.6	5496.3	6253.3	6197.2	6711.8	6341.2	6593.9	6037.5
50°	3285.3	3449.2	3616.9	3823.8	4014.4	4212.2	4336.0	4428.2	4416.3	4376.6	4270.0
52.5°	2794.9	2845.7	2928.3	3045.9	3152.3	3259.4	3329.7	3387.0	3388.1	3372.1	3318.2
55°	2336.0	2400.3	2459.6	2536.6	2667.7	2687.8	2788.7	2768.3	2776.2	2748.3	2776.9
57.5°	2059.6	2097.0	2130.5	2176.2	2214.1	2258.3	2284.4	2309.5	2307.0	2301.6	2274.1
60°	1863.8	1884.4	1903.0	1929.7	1950.5	1975.5	1987.5	2000.2	1996.1	1986.8	1962.3
62.5°	1712.7	1725.8	1736.3	1753.5	1766.2	1781.8	1787.9	1793.4	1787.9	1779.2	1757.5
65°	1563.9	1572.2	1578.9	1591.8	1600.8	1614.1	1619.4	1624.5	1619.5	1612.7	1596.2
67.5°	1429.5	1430.3	1429.6	1434.9	1437.6	1445.6	1448.1	1451.7	1445.9	1440.0	1426.2
70°	1327.6	1325.5	1322.9	1325.0	1325.5	1329.4	1330.0	1329.4	1322.5	1312.2	1297.0
72.5°	1247.9	1246.8	1244.9	1246.6	1246.6	1250.2	1249.1	1247.3	1238.8	1228.8	1213.8
75°	1145.6	1144.7	1140.9	1141.1	1137.8	1138.9	1134.8	1132.4	1123.0	1114.6	1101.2
77.5°	1025.7	1023.8	1018.2	1016.1	1010.0	1007.5	999.7	995.8	986.2	979.5	968.0
80°	892.0	889.9	882.7	878.7	869.1	863.0	851.5	844.9	833.9	827.4	816.1
82.5°	737.3	738.0	730.9	725.9	712.1	701.6	686.3	678.0	665.8	659.4	647.9
85°	524.3	516.9	520.9	520.5	511.9	502.8	490.3	481.5	471.2	465.2	457.1
87.5°	287.6	289.4	287.3	285.5	279.5	274.8	265.1	259.9	252.5	248.7	242.7
90°	91.3	90.5	82.8	82.2	74.7	71.5	62.8	60.7	52.7	51.3	45.7
92.5°	55.2	52.4	49.8	46.6	44.2	41.3	38.4	35.6	32.7	31.4	30.7
95°	68.9	64.9	60.8	56.6	52.5	48.4	44.4	40.2	36.1	35.3	34.5
97.5°	77.8	72.9	68.0	63.3	58.3	53.5	48.8	43.9	39.0	38.5	38.0
100°	134.4	123.3	112.2	100.9	89.7	78.4	67.5	56.2	45.1	44.4	43.8
102.5°	300.0	273.0	245.8	218.7	191.7	164.4	137.3	110.1	83.0	79.1	75.2
105°	529.0	487.9	447.1	406.0	364.9	323.7	282.8	241.6	200.5	187.4	174.0
107.5°	694.7	656.1	617.8	579.2	540.5	502.2	463.6	424.9	386.2	363.0	339.9
110°	770.7	740.1	709.9	679.4	648.9	618.4	587.9	557.2	526.8	506.8	487.1



TEST NUMBER: P1444844  
 CATALOG NUMBER: EHBR1-54-UNV-TA-L940-UPL18

**CANDELA DISTRIBUTION (continued):**

	137.5°	140°	142.5°	145°	147.5°	150°	152.5°	155°	157.5°	160°	162.5°
112.5°	763.3	741.2	719.2	696.9	674.8	652.4	630.4	608.0	585.6	573.8	561.8
115°	693.4	680.3	667.2	654.1	641.0	627.8	614.7	601.2	587.9	581.7	575.8
117.5°	610.1	603.7	597.5	591.0	584.6	578.0	571.7	565.0	558.5	556.7	554.8
120°	525.7	524.3	522.6	521.2	519.7	518.2	516.5	514.8	513.1	513.9	514.6
122.5°	456.1	457.6	459.4	460.5	462.3	463.5	465.2	466.2	467.6	470.0	472.3
125°	408.6	411.3	414.1	416.8	419.5	422.3	425.1	427.5	430.4	432.6	435.3
127.5°	375.8	378.8	382.0	385.0	388.2	391.2	394.2	397.1	400.0	402.3	405.0
130°	354.6	357.2	360.3	362.9	365.8	368.6	371.4	374.1	376.9	379.1	381.2
132.5°	340.6	343.2	346.0	348.4	351.2	353.7	356.4	358.9	361.9	363.5	365.5
135°	333.6	335.6	337.9	339.9	342.4	344.3	346.6	348.9	351.3	352.8	354.6
137.5°	327.8	329.6	331.6	333.3	335.5	337.3	339.4	341.3	343.7	344.8	346.6
140°	323.3	325.1	327.0	328.9	330.9	332.8	335.1	337.1	339.5	340.7	342.3
142.5°	321.0	322.3	324.0	325.5	327.3	328.8	330.8	332.7	334.7	336.1	337.5
145°	318.0	319.5	321.2	322.7	324.4	326.3	328.5	330.5	332.7	333.9	335.1
147.5°	316.9	318.3	319.8	321.3	322.8	324.2	326.4	328.1	330.2	331.4	332.4
150°	315.0	316.2	317.6	319.0	320.7	322.4	324.3	326.2	328.5	329.7	330.8
152.5°	313.2	314.5	316.0	317.7	319.4	321.2	323.2	325.1	327.2	328.2	329.6
155°	312.5	313.6	315.3	316.9	318.7	320.2	322.2	324.0	326.0	327.2	328.3
157.5°	313.7	314.7	316.3	317.8	319.4	321.0	322.8	324.3	326.2	327.2	328.1
160°	316.0	317.1	318.5	319.9	321.4	322.8	324.4	325.8	327.4	328.4	329.3
162.5°	318.9	320.2	321.5	322.6	324.3	325.7	327.3	328.6	330.2	330.9	331.9
165°	323.0	324.0	325.3	326.2	327.4	328.3	329.7	330.7	332.1	332.7	333.7
167.5°	329.6	330.3	331.0	331.9	333.0	333.8	334.9	335.8	336.8	337.5	338.3
170°	333.9	334.6	335.1	336.0	336.8	337.6	338.4	339.0	340.1	340.7	341.4
172.5°	338.6	338.8	339.6	339.9	340.5	340.8	341.5	342.1	342.6	343.3	343.8
175°	343.1	343.2	343.5	343.6	344.0	344.1	344.6	345.0	345.3	345.6	346.0
177.5°	346.9	347.0	347.2	347.3	347.7	347.8	348.2	348.2	348.5	348.8	349.4
180°	348.9	348.9	348.9	348.9	348.9	348.9	348.9	348.9	348.9	348.9	348.9



TEST NUMBER: P1444844  
 CATALOG NUMBER: EHBR1-54-UNV-TA-L940-UPL18

**CANDELA DISTRIBUTION (continued):**

	165°	167.5°	170°	172.5°	175°	177.5°	180°	182.5°	185°	187.5°	190°
0°	43163.3	43163.3	43163.3	43163.3	43163.3	43163.3	43163.3	43163.3	43163.3	43163.3	43163.3
2.5°	43019.9	43019.5	43018.1	43016.1	43014.3	43015.4	43017.2	43022.2	43030.8	43043.3	43059.6
5°	42869.0	42877.8	42882.7	42883.4	42878.9	42876.2	42880.3	42892.1	42916.0	42956.0	43010.1
7.5°	42710.6	42721.4	42738.1	42750.6	42753.0	42750.0	42750.6	42769.1	42813.1	42891.0	43000.3
10°	42541.5	42509.4	42526.4	42557.4	42582.0	42586.5	42589.5	42611.4	42675.7	42793.5	42969.0
12.5°	42385.4	42283.7	42264.0	42292.0	42329.4	42341.4	42338.1	42347.5	42422.9	42578.6	42823.2
15°	42180.0	41988.5	41923.1	41930.3	41976.5	41993.2	41981.0	41962.4	42035.8	42226.1	42542.7
17.5°	41847.6	41538.8	41418.5	41413.2	41467.4	41481.7	41452.0	41394.4	41466.7	41704.1	42097.2
20°	41342.2	40886.5	40660.0	40623.9	40682.7	40665.6	40606.2	40519.2	40614.3	40902.8	41370.2
22.5°	40433.8	39856.3	39469.4	39344.5	39414.8	39367.9	39281.3	39170.2	39296.4	39624.4	40144.9
25°	38949.3	38282.1	37752.2	37455.0	37511.0	37427.0	37332.8	37198.1	37348.6	37725.0	38298.0
27.5°	36767.3	35996.5	35340.0	34848.0	34866.1	34756.1	34647.5	34473.2	34661.1	35106.6	35752.9
30°	33865.8	32974.0	32174.5	31505.7	31445.9	31339.3	31228.1	30999.3	31234.4	31767.8	32523.0
32.5°	30222.0	29231.9	28308.1	27462.6	27303.1	27198.9	27099.9	26836.6	27144.5	27766.4	28634.0
35°	25960.8	24906.0	23904.4	22938.8	22674.6	22570.4	22483.9	22231.6	22615.9	23292.5	24229.6
37.5°	21283.4	20205.9	19211.6	18221.4	17848.0	17706.8	17643.9	17478.6	17921.9	18591.2	19532.1
40°	16481.7	15479.9	14588.4	13713.7	13288.1	13072.0	13039.0	13008.9	13437.5	14018.2	14872.2
42.5°	11989.8	11181.5	10494.1	9825.6	9439.9	9144.8	9144.6	9234.2	9620.0	10055.0	10713.6
45°	8293.7	7751.3	7313.2	6866.6	6985.9	6397.6	6743.3	6565.9	6756.6	7037.0	7465.3
47.5°	5701.1	5405.0	5164.4	4914.9	4732.9	4559.3	4574.5	4686.5	4866.1	5032.5	5255.3
50°	4155.1	4004.3	3881.8	3752.2	3661.6	3585.1	3589.5	3638.0	3732.4	3820.0	3936.7
52.5°	3255.8	3172.6	3106.1	3034.5	2986.9	2948.8	2950.9	2974.5	3025.5	3075.5	3142.4
55°	2683.6	2673.5	2587.0	2522.7	2498.2	2472.6	2477.2	2486.6	2521.2	2550.6	2594.8
57.5°	2248.8	2210.0	2184.1	2150.1	2134.6	2116.7	2120.7	2124.2	2147.4	2167.1	2199.0
60°	1941.8	1914.3	1896.0	1872.9	1862.6	1851.3	1853.9	1855.9	1870.8	1883.6	1906.5
62.5°	1737.9	1713.3	1697.3	1679.5	1672.3	1664.7	1666.4	1667.0	1676.3	1685.7	1703.0
65°	1581.5	1561.9	1548.7	1533.3	1525.8	1517.7	1518.6	1518.6	1526.4	1533.3	1546.3
67.5°	1416.0	1401.3	1392.7	1380.5	1375.4	1367.3	1367.1	1364.5	1369.6	1372.4	1381.2
70°	1283.2	1268.4	1257.3	1245.7	1239.3	1232.1	1232.2	1232.4	1238.3	1244.6	1256.0
72.5°	1201.2	1187.0	1177.2	1167.0	1160.9	1154.8	1153.7	1153.1	1157.4	1160.7	1168.3
75°	1092.5	1081.3	1075.5	1065.9	1061.1	1054.2	1053.0	1049.9	1051.9	1052.6	1058.2
77.5°	960.8	950.1	945.4	935.7	931.6	923.8	923.2	919.6	921.3	920.1	924.5
80°	810.5	800.8	798.2	790.2	788.4	781.1	780.0	775.7	777.0	773.6	775.2
82.5°	642.9	634.0	632.0	624.7	624.7	618.1	617.8	611.3	611.3	605.7	596.7
85°	452.9	446.4	443.6	437.5	435.7	430.5	427.7	421.5	419.2	415.2	414.0
87.5°	239.0	234.9	231.1	228.3	223.0	213.5	212.8	206.2	206.6	202.1	202.4
90°	45.0	40.0	39.4	34.8	33.9	30.7	30.2	29.8	30.2	30.0	30.6
92.5°	29.8	28.9	27.9	26.9	26.0	25.0	24.0	25.0	26.0	26.9	27.9
95°	33.6	32.8	31.9	31.0	30.2	29.3	28.5	29.3	30.2	31.1	32.0
97.5°	37.5	36.9	36.4	35.9	35.3	34.8	34.3	35.0	35.5	36.1	36.6
100°	43.2	42.6	41.9	41.3	40.7	40.1	39.4	40.3	41.0	41.6	42.2
102.5°	71.4	67.5	63.5	59.6	55.6	51.7	47.8	51.7	55.6	59.7	63.6
105°	160.8	147.8	134.4	121.2	108.0	94.7	81.4	94.8	108.2	121.4	134.7
107.5°	316.5	293.5	270.1	247.0	223.4	200.3	176.9	200.5	223.8	247.2	270.5
110°	466.9	446.8	426.9	406.8	386.7	366.7	346.6	366.8	387.0	407.1	427.3



TEST NUMBER: P1444844  
 CATALOG NUMBER: EHBR1-54-UNV-TA-L940-UPL18

**CANDELA DISTRIBUTION (continued):**

	165°	167.5°	170°	172.5°	175°	177.5°	180°	182.5°	185°	187.5°	190°
112.5°	549.7	537.7	525.4	513.5	501.2	489.2	476.9	489.5	501.8	514.3	526.4
115°	569.6	563.3	557.2	551.0	544.5	538.3	531.7	538.8	545.3	551.9	558.5
117.5°	552.7	551.0	549.0	547.1	544.8	542.9	540.6	543.2	545.7	548.5	550.6
120°	515.2	516.1	516.8	517.2	517.9	518.4	518.6	519.0	519.0	519.0	518.8
122.5°	474.5	476.8	478.9	481.0	483.0	485.0	486.8	485.7	484.3	483.2	481.4
125°	437.4	440.1	442.3	444.6	446.6	449.0	450.5	449.8	448.4	447.0	445.2
127.5°	407.2	409.6	411.6	414.1	415.9	417.8	419.5	418.9	417.7	416.5	415.0
130°	383.1	385.4	387.1	389.1	390.6	392.2	393.4	393.2	392.4	391.9	390.7
132.5°	367.3	369.2	371.0	372.7	373.9	375.4	376.2	376.4	376.0	375.6	374.8
135°	356.3	357.8	359.2	360.9	361.9	363.1	363.6	364.2	364.1	364.0	363.4
137.5°	347.7	349.3	350.4	351.5	352.3	353.1	353.6	354.2	354.4	355.0	354.7
140°	343.4	345.0	346.3	347.3	348.3	349.3	349.6	350.4	350.6	350.9	350.6
142.5°	338.8	340.2	341.5	342.8	343.5	344.4	344.9	345.5	345.7	346.0	345.8
145°	336.4	337.4	338.7	339.7	340.4	341.0	341.2	342.1	342.5	342.8	342.9
147.5°	333.6	334.8	335.7	336.6	337.3	337.8	338.2	338.8	339.3	339.6	339.9
150°	332.1	333.3	334.4	335.4	336.1	336.9	337.1	337.8	338.1	338.4	338.4
152.5°	330.6	331.7	332.6	333.4	334.3	334.8	335.2	335.9	336.4	336.8	336.9
155°	329.3	330.5	331.4	332.3	333.0	333.8	334.5	335.1	335.6	335.9	336.2
157.5°	329.1	330.2	331.0	331.9	332.6	333.5	334.2	335.0	335.5	336.1	336.4
160°	330.2	331.3	331.9	332.9	333.6	334.5	335.1	335.9	336.5	337.0	337.6
162.5°	332.7	333.7	334.2	335.1	336.0	336.7	337.3	338.2	338.8	339.4	340.0
165°	334.6	335.6	336.3	337.3	338.2	339.0	339.6	340.3	340.7	341.3	341.6
167.5°	339.0	340.0	340.6	341.4	342.0	342.9	343.7	344.2	344.6	345.0	345.4
170°	342.0	342.8	343.6	344.1	344.9	345.6	346.0	346.4	346.9	347.2	347.6
172.5°	344.3	345.2	345.7	346.6	347.1	347.8	348.3	348.7	348.9	348.9	348.9
175°	346.4	347.0	347.5	348.0	348.3	348.9	349.5	349.5	349.6	349.6	349.7
177.5°	349.7	350.4	351.0	351.2	351.6	352.0	352.4	352.2	352.0	351.8	351.5
180°	348.9	348.9	348.9	348.9	348.9	348.9	348.9	348.9	348.9	348.9	348.9



TEST NUMBER: P1444844  
 CATALOG NUMBER: EHBR1-54-UNV-TA-L940-UPL18

**CANDELA DISTRIBUTION (continued):**

	192.5°	195°	197.5°	200°	202.5°	205°	207.5°	210°	212.5°	215°	217.5°
0°	43163.3	43163.3	43163.3	43163.3	43163.3	43163.3	43163.3	43163.3	43163.3	43163.3	43163.3
2.5°	43082.7	43104.3	43137.2	43167.1	43212.1	43247.6	43300.9	43341.4	43401.5	43440.6	43506.0
5°	43086.6	43170.9	43281.7	43389.8	43519.9	43637.9	43784.6	43909.6	44057.1	44177.3	44328.2
7.5°	43147.5	43310.0	43504.9	43701.2	43923.2	44130.8	44364.9	44576.6	44808.1	45004.1	45218.1
10°	43192.4	43443.1	43730.2	44019.1	44323.2	44605.8	44891.0	45137.5	45367.9	45557.4	45724.9
12.5°	43131.5	43476.8	43845.3	44201.0	44539.2	44831.6	45077.0	45266.6	45397.4	45486.2	45507.0
15°	42924.4	43340.0	43740.5	44094.8	44375.4	44591.8	44703.8	44756.3	44700.0	44606.5	44401.1
17.5°	42537.4	42975.7	43333.8	43613.3	43761.6	43820.3	43727.5	43566.1	43250.6	42900.5	42394.8
20°	41827.9	42236.3	42496.1	42648.5	42608.9	42462.2	42111.9	41686.0	41056.2	40385.0	39499.3
22.5°	40583.5	40940.5	41079.0	41090.3	40848.3	40480.9	39849.1	39118.7	38125.1	37092.2	35821.9
25°	38715.6	39028.3	39050.2	38927.3	38484.4	37889.2	36961.4	35928.1	34577.9	33201.6	31609.8
27.5°	36182.3	36482.2	36408.8	36179.6	35564.6	34768.2	33580.2	32245.5	30581.0	28955.4	27194.5
30°	32997.8	33318.5	33232.4	32938.3	32206.9	31265.5	29867.7	28317.0	26469.0	24732.7	22948.3
32.5°	29186.9	29592.4	29532.9	29253.4	28490.2	27482.7	25966.1	24321.3	22430.6	20719.6	18983.8
35°	24855.3	25347.7	25373.1	25190.4	24481.9	23486.0	21988.4	20396.4	18585.5	16971.0	15367.5
37.5°	20188.5	20759.3	20876.5	20827.2	20240.0	19361.0	17996.4	16568.3	14963.9	13549.0	12177.6
40°	15495.8	16073.6	16274.1	16333.6	15900.2	15219.4	14099.4	12946.7	11638.9	10492.3	9403.4
42.5°	11216.4	11728.6	11922.3	12044.2	11773.7	11319.7	10502.7	9665.6	8707.4	7880.5	7087.7
45°	7790.0	8152.3	8299.7	8422.4	8275.0	8018.9	7503.0	6979.4	6346.9	5806.6	5294.9
47.5°	5446.4	5646.2	5743.5	5803.0	5745.9	5612.3	5331.6	5028.3	4671.3	4355.4	4051.8
50°	4037.0	4143.3	4194.2	4228.6	4187.0	4112.7	3960.8	3795.7	3599.6	3420.7	3245.9
52.5°	3199.2	3260.2	3290.4	3308.9	3285.1	3239.7	3151.2	3053.3	2935.7	2825.2	2767.2
55°	2695.2	2692.0	2761.9	2728.1	2761.9	2686.5	2670.7	2563.1	2465.4	2396.7	2322.2
57.5°	2222.6	2254.3	2267.7	2282.7	2273.0	2259.2	2221.6	2183.1	2131.6	2088.6	2042.6
60°	1923.9	1950.0	1964.7	1979.7	1978.6	1973.5	1951.8	1928.7	1896.6	1870.8	1843.0
62.5°	1718.2	1740.8	1755.3	1769.6	1770.9	1768.7	1752.3	1736.3	1714.4	1698.2	1679.0
65°	1556.3	1572.2	1582.1	1593.5	1592.8	1589.8	1574.9	1561.6	1543.6	1532.4	1518.3
67.5°	1386.9	1399.0	1406.6	1417.3	1419.4	1420.0	1411.9	1405.7	1396.8	1393.6	1388.8
70°	1266.5	1281.0	1293.3	1306.9	1314.3	1317.8	1314.3	1311.1	1306.0	1303.7	1300.0
72.5°	1175.3	1187.6	1197.2	1209.6	1216.4	1221.4	1218.7	1216.9	1212.4	1211.8	1209.2
75°	1062.1	1070.6	1076.0	1085.2	1088.9	1093.6	1091.4	1092.5	1091.1	1094.7	1094.5
77.5°	925.9	932.1	934.7	941.4	942.1	947.7	949.0	955.5	960.2	970.4	975.8
80°	772.6	776.6	776.6	783.5	786.6	796.0	800.5	811.2	816.1	825.3	826.1
82.5°	600.2	595.6	600.2	597.3	606.1	616.7	618.1	627.3	629.3	635.1	630.6
85°	410.3	410.0	406.3	406.9	404.2	405.5	404.0	405.6	404.1	404.2	400.0
87.5°	196.6	198.3	194.1	195.5	191.4	193.2	189.6	192.5	188.1	188.8	182.3
90°	30.7	31.1	31.2	31.8	32.9	34.3	36.1	37.5	39.9	41.3	43.2
92.5°	28.9	30.0	30.9	32.0	32.9	35.8	38.6	41.5	44.4	47.1	50.0
95°	32.9	33.7	34.6	35.8	36.6	40.7	44.9	49.0	53.2	57.3	61.5
97.5°	37.4	37.9	38.5	38.9	39.7	44.5	49.5	54.3	59.2	64.1	68.8
100°	43.0	43.7	44.3	45.1	45.7	57.0	68.3	79.5	90.7	101.8	113.1
102.5°	67.7	71.6	75.6	79.8	83.8	111.1	138.3	165.6	192.6	219.8	246.9
105°	148.0	161.3	174.9	188.2	201.4	242.7	284.0	325.2	366.1	407.3	448.6
107.5°	293.9	317.2	340.8	364.1	387.5	426.3	465.0	503.6	542.5	581.2	619.5
110°	447.8	467.7	488.2	508.4	528.5	559.0	589.9	620.5	651.1	681.8	712.2



TEST NUMBER: P1444844  
 CATALOG NUMBER: EHBR1-54-UNV-TA-L940-UPL18

**CANDELA DISTRIBUTION (continued):**

	192.5°	195°	197.5°	200°	202.5°	205°	207.5°	210°	212.5°	215°	217.5°
112.5°	539.0	551.1	563.4	575.4	587.7	610.1	632.8	655.1	677.7	699.8	722.1
115°	565.0	571.2	577.8	584.0	590.7	604.1	617.4	630.8	644.3	657.5	671.0
117.5°	552.8	555.1	557.5	559.3	561.5	568.2	575.0	581.7	588.5	595.1	601.8
120°	518.6	518.2	517.9	517.2	516.9	518.6	520.6	522.4	524.3	525.9	527.5
122.5°	479.9	477.8	476.2	474.1	472.3	470.9	469.8	468.4	467.6	466.1	465.0
125°	443.6	441.6	439.7	437.5	435.4	432.9	430.6	428.0	425.5	423.0	420.4
127.5°	413.7	411.7	410.1	408.0	406.0	403.1	400.3	397.4	394.7	391.7	388.9
130°	389.8	388.2	387.0	385.0	383.7	380.7	378.3	375.6	373.0	370.4	367.8
132.5°	374.1	372.8	371.7	370.1	368.8	366.2	364.3	361.5	359.1	356.6	354.3
135°	362.9	362.0	361.3	360.1	359.0	356.7	355.0	352.8	350.9	348.8	346.9
137.5°	354.6	353.7	353.3	352.5	351.7	349.7	348.2	346.3	344.7	342.8	341.2
140°	350.5	349.8	349.5	348.7	348.0	346.1	344.3	342.5	340.8	338.9	337.3
142.5°	345.5	345.1	344.7	344.0	343.3	341.6	340.6	339.0	337.5	336.1	334.7
145°	342.8	342.5	342.3	341.7	341.5	339.8	338.4	336.7	335.5	333.8	332.4
147.5°	340.0	339.7	339.7	339.4	339.3	337.9	336.9	335.5	334.5	333.2	332.1
150°	338.5	338.4	338.4	338.0	337.8	336.5	335.7	334.4	333.5	332.1	331.2
152.5°	337.1	337.2	337.3	337.2	337.3	336.3	335.3	334.2	333.2	331.9	330.9
155°	336.5	336.7	336.8	336.8	336.8	336.0	335.1	334.2	333.3	332.2	331.4
157.5°	336.8	337.1	337.3	337.5	337.7	337.0	336.2	335.5	334.7	333.8	333.1
160°	338.0	338.5	338.7	338.9	339.3	338.7	338.3	337.4	337.1	336.1	335.3
162.5°	340.4	340.9	341.2	341.4	341.6	341.0	340.7	340.1	339.5	338.5	337.8
165°	342.1	342.2	342.6	342.7	342.8	342.4	342.2	341.7	341.4	340.7	340.3
167.5°	345.6	345.7	346.1	346.2	346.4	346.1	346.3	345.8	345.5	345.2	344.8
170°	347.7	348.0	348.2	348.2	348.4	348.2	348.0	347.7	347.6	347.0	346.7
172.5°	349.2	349.2	349.2	349.4	349.4	349.2	349.0	348.8	348.8	348.5	348.3
175°	349.6	349.6	349.7	349.6	349.6	349.6	349.6	349.6	349.6	349.4	349.3
177.5°	351.5	351.4	351.1	350.9	350.8	350.7	350.8	350.6	350.8	350.7	350.6
180°	348.9	348.9	348.9	348.9	348.9	348.9	348.9	348.9	348.9	348.9	348.9



TEST NUMBER: P1444844  
 CATALOG NUMBER: EHBR1-54-UNV-TA-L940-UPL18

**CANDELA DISTRIBUTION (continued):**

	220°	222.5°	225°	227.5°	230°	232.5°	235°	237.5°	240°	242.5°	245°
0°	43163.3	43163.3	43163.3	43163.3	43163.3	43163.3	43163.3	43163.3	43163.3	43163.3	43163.3
2.5°	43546.4	43277.5	43242.0	43260.9	43305.9	43322.5	43371.0	43384.2	43433.0	43445.1	43491.9
5°	44445.0	44089.6	44107.3	44192.7	44322.1	44399.2	44526.4	44592.9	44714.3	44769.6	44879.3
7.5°	45392.5	45113.4	45200.4	45344.5	45521.4	45643.9	45796.7	45896.2	46027.9	46109.7	46215.0
10°	45857.6	45781.2	45877.0	45990.4	46091.4	46170.4	46235.1	46287.0	46321.0	46352.7	46366.7
12.5°	45503.6	45622.0	45638.3	45627.3	45560.4	45509.4	45394.7	45316.8	45178.5	45094.2	44929.5
15°	44191.3	44451.5	44307.4	44089.2	43769.9	43503.7	43127.8	42847.9	42456.4	42190.9	41798.0
17.5°	41888.1	42216.6	41841.0	41336.2	40693.9	40144.4	39460.2	38917.1	38236.8	37742.0	37107.1
20°	38645.7	38952.7	38282.8	37445.9	36452.3	35616.2	34630.1	33843.4	32927.1	32245.5	31422.9
22.5°	34608.5	34827.2	33883.6	32755.3	31489.4	30444.9	29265.9	28322.8	27277.0	26497.8	25620.7
25°	30142.2	30201.2	29069.3	27769.4	26358.7	25184.6	23926.0	22934.3	21867.9	21078.1	20217.3
27.5°	25634.3	25547.8	24324.3	22946.1	21462.0	20241.8	19014.1	18084.9	17150.8	16439.4	15697.9
30°	21379.5	21169.9	19899.6	18482.9	17042.4	15948.7	14929.5	14183.3	13440.2	12875.9	12280.6
32.5°	17477.7	17182.1	15945.5	14618.3	13404.4	12560.4	11804.7	11240.0	10640.0	10163.2	9663.7
35°	14021.7	13706.7	12611.3	11486.1	10567.4	9945.2	9351.3	8888.0	8378.5	7976.4	7542.5
37.5°	11055.7	10797.6	9880.0	8994.6	8299.7	7817.5	7330.8	6952.2	6531.2	6354.3	5890.7
40°	8535.0	8354.5	7637.1	6984.4	6462.5	6236.1	5742.1	5388.4	5073.7	4814.3	4562.9
42.5°	6657.4	6593.5	5895.4	5386.3	5018.9	4733.5	4458.2	4234.7	4017.2	3838.3	3669.4
45°	4885.5	4835.1	4525.0	4231.2	3980.8	3781.4	3595.3	3441.6	3299.3	3181.5	3074.2
47.5°	3804.4	3788.3	3609.7	3427.5	3269.8	3141.6	3020.9	2918.8	2824.4	2745.7	2720.1
50°	3094.3	3092.2	2987.4	2875.0	2762.6	2688.5	2611.5	2551.2	2490.6	2443.3	2393.5
52.5°	2629.1	2617.7	2547.0	2477.6	2410.9	2362.3	2313.0	2274.4	2234.3	2205.2	2174.1
55°	2263.4	2275.4	2234.5	2193.0	2151.3	2121.0	2086.5	2061.1	2033.5	2015.1	1996.4
57.5°	2009.4	2025.2	2003.8	1980.2	1954.8	1934.9	1911.2	1893.6	1875.1	1863.5	1852.6
60°	1824.6	1841.9	1833.2	1821.4	1805.7	1793.9	1778.7	1768.9	1757.1	1750.6	1744.4
62.5°	1667.8	1689.4	1686.4	1680.8	1670.7	1664.1	1655.8	1651.5	1643.7	1640.8	1637.9
65°	1511.4	1535.7	1535.3	1532.5	1526.9	1525.0	1519.9	1518.9	1514.9	1516.5	1516.2
67.5°	1388.3	1409.5	1414.1	1417.5	1417.3	1418.6	1418.2	1420.2	1420.2	1423.3	1425.1
70°	1299.6	1314.3	1317.8	1321.4	1322.3	1325.2	1325.2	1326.9	1326.5	1329.0	1329.4
72.5°	1209.8	1229.2	1232.8	1235.6	1235.6	1238.3	1236.9	1236.4	1232.6	1231.7	1229.0
75°	1098.2	1123.0	1128.4	1131.9	1132.4	1134.8	1131.5	1129.3	1123.0	1120.4	1115.9
77.5°	981.6	1007.3	1011.1	1012.4	1010.4	1010.8	1003.8	999.0	990.8	987.5	983.2
80°	829.7	867.6	870.7	868.3	862.4	861.4	854.5	850.0	840.3	837.0	833.3
82.5°	631.4	675.9	682.2	684.9	680.0	681.1	674.6	672.0	663.1	661.5	655.5
85°	398.7	443.1	450.5	449.3	444.6	443.5	439.6	440.9	440.1	442.4	443.7
87.5°	183.2	226.2	236.6	233.2	232.7	229.7	222.8	225.4	229.6	232.3	232.4
90°	44.9	59.6	61.0	60.8	56.4	55.4	51.3	51.2	47.9	47.5	44.3
92.5°	52.9	55.7	58.6	56.1	53.5	51.0	48.4	45.7	43.3	40.6	38.2
95°	65.6	69.4	73.5	70.2	66.6	63.3	59.8	56.5	53.0	49.7	46.2
97.5°	73.6	78.3	82.9	79.6	76.1	72.6	69.1	65.8	62.3	58.9	55.4
100°	124.3	134.9	146.0	136.3	126.6	116.9	107.2	97.5	87.8	78.1	68.3
102.5°	274.1	300.7	327.8	303.2	278.7	254.1	229.7	205.1	180.6	156.0	131.5
105°	489.5	530.0	570.9	533.2	495.7	458.5	421.0	383.6	346.1	308.7	271.4
107.5°	658.1	695.7	733.9	699.9	666.0	632.2	598.1	564.3	530.3	496.4	462.6
110°	742.8	772.0	802.1	779.0	756.2	733.1	710.3	687.3	664.4	641.8	619.0



TEST NUMBER: P1444844  
 CATALOG NUMBER: EHBR1-54-UNV-TA-L940-UPL18

**CANDELA DISTRIBUTION (continued):**

	220°	222.5°	225°	227.5°	230°	232.5°	235°	237.5°	240°	242.5°	245°
112.5°	744.4	764.8	786.6	772.7	759.2	745.5	732.0	718.3	705.0	691.3	678.1
115°	683.9	695.0	707.7	701.7	696.1	690.3	684.6	679.0	673.3	667.6	662.4
117.5°	608.4	612.3	618.0	616.2	614.8	613.0	611.5	610.0	608.7	607.2	605.9
120°	529.3	528.0	528.8	528.6	528.7	528.4	528.6	528.5	528.7	528.8	529.1
122.5°	463.5	459.0	456.6	456.3	456.2	455.8	455.7	455.6	455.4	455.3	455.5
125°	417.8	411.6	408.0	406.1	404.4	402.5	400.7	398.7	397.3	395.6	394.1
127.5°	386.0	379.2	375.3	372.3	369.2	366.0	363.1	359.9	357.0	353.8	351.1
130°	365.2	358.4	354.7	351.0	347.5	343.7	340.2	336.5	332.8	329.3	325.7
132.5°	351.8	344.9	341.4	337.9	334.6	330.8	327.6	323.8	320.3	316.5	313.3
135°	344.7	338.1	335.0	331.7	328.7	325.3	322.1	318.6	315.5	312.1	309.1
137.5°	339.3	332.6	329.9	327.0	324.5	321.7	319.2	316.3	313.6	310.4	307.9
140°	335.4	328.4	325.5	323.7	322.2	320.2	318.4	316.5	314.7	312.8	310.9
142.5°	333.2	326.4	323.7	322.4	321.3	319.9	318.9	317.5	316.2	314.4	313.1
145°	331.0	323.4	320.7	319.9	319.7	319.1	318.5	318.0	317.4	316.6	316.1
147.5°	330.7	322.8	320.1	319.9	319.8	319.3	319.4	318.8	318.9	318.3	318.3
150°	329.8	321.0	317.8	318.0	317.8	318.0	318.1	318.0	318.3	318.3	318.3
152.5°	329.6	319.0	315.5	315.5	315.9	315.9	316.1	316.5	316.9	317.1	317.3
155°	330.1	318.5	314.6	314.3	314.4	314.5	314.5	314.8	315.0	315.2	315.6
157.5°	332.0	319.7	315.9	315.5	315.4	315.3	315.2	315.4	315.5	315.5	316.0
160°	334.6	322.3	318.3	317.9	317.8	317.5	317.3	317.3	317.4	317.5	317.8
162.5°	337.0	325.0	321.3	320.8	320.3	320.1	320.0	319.7	319.8	319.7	320.0
165°	339.6	329.0	325.4	325.0	325.0	324.7	324.5	324.5	324.5	324.5	324.8
167.5°	344.1	334.6	331.9	331.4	330.9	330.5	330.5	329.8	329.8	329.4	329.4
170°	346.2	338.7	336.3	336.0	336.1	336.0	335.8	335.8	335.7	335.6	335.7
172.5°	348.0	342.5	340.6	340.7	341.0	341.0	341.2	341.3	341.4	341.6	341.9
175°	349.2	345.8	345.1	344.9	345.0	345.1	345.2	345.4	345.5	345.5	345.9
177.5°	350.6	349.6	349.3	349.3	349.3	349.3	349.3	349.3	349.3	349.5	349.5
180°	348.9	348.9	348.9	348.9	348.9	348.9	348.9	348.9	348.9	348.9	348.9



TEST NUMBER: P1444844  
 CATALOG NUMBER: EHBR1-54-UNV-TA-L940-UPL18

**CANDELA DISTRIBUTION (continued):**

	247.5°	250°	252.5°	255°	257.5°	260°	262.5°	265°	267.5°	270°	272.5°
0°	43163.3	43163.3	43163.3	43163.3	43163.3	43163.3	43163.3	43163.3	43163.3	43163.3	43163.3
2.5°	43500.7	43551.4	43547.5	43595.0	43592.5	43637.2	43628.2	43666.7	43657.9	43690.9	43671.5
5°	44927.6	45024.1	45055.9	45142.9	45161.0	45238.9	45240.5	45302.4	45294.9	45343.4	45317.6
7.5°	46277.4	46367.4	46410.2	46477.8	46511.7	46567.6	46589.5	46635.6	46646.7	46673.9	46673.0
10°	46391.3	46391.0	46412.2	46402.7	46421.6	46410.7	46433.7	46425.4	46459.5	46450.6	46476.4
12.5°	44858.5	44706.4	44650.9	44514.2	44484.3	44367.1	44375.4	44300.2	44336.5	44290.3	44369.0
15°	41564.2	41211.3	41037.0	40730.2	40633.9	40391.4	40371.7	40210.7	40254.2	40169.9	40293.0
17.5°	36696.3	36140.7	35835.8	35387.7	35209.9	34866.8	34798.1	34590.8	34622.9	34518.5	34667.3
20°	30892.3	30220.9	29836.3	29318.2	29087.1	28678.2	28569.7	28337.8	28366.8	28262.9	28431.2
22.5°	25022.1	24319.4	23885.2	23342.1	23047.0	22662.4	22547.0	22314.0	22327.3	22229.7	22391.5
25°	19627.6	18953.9	18532.5	18039.2	17783.1	17430.4	17309.2	17100.0	17111.8	17031.3	17176.6
27.5°	15183.4	14630.6	14277.9	13864.5	13634.9	13345.1	13226.9	13050.9	13050.4	12991.3	13112.7
30°	11865.0	11403.7	11087.0	10727.0	10511.4	10249.8	10135.6	9978.2	9971.3	9929.4	10025.9
32.5°	9290.0	8879.7	8591.0	8274.0	8080.4	7856.0	7747.9	7621.4	7609.9	7571.9	7651.1
35°	7221.7	6876.2	6628.0	6361.2	6380.8	6049.6	6104.7	5847.5	5777.7	5762.5	5821.4
37.5°	5581.6	5314.0	5112.3	4912.5	4777.1	4637.2	4561.8	4494.2	4486.4	4479.9	4521.2
40°	4368.9	4181.6	4034.9	3897.8	3804.7	3719.2	3672.1	3635.0	3626.2	3621.2	3646.2
42.5°	3536.0	3409.5	3315.0	3231.3	3174.8	3128.4	3102.5	3081.8	3074.9	3075.1	3089.8
45°	2987.4	2910.7	2849.8	2797.8	2761.7	2777.5	2730.8	2755.3	2723.0	2756.5	2734.4
47.5°	2630.9	2565.6	2527.8	2491.0	2469.1	2451.5	2452.2	2452.5	2459.4	2460.5	2467.6
50°	2355.7	2317.9	2291.7	2268.2	2256.8	2247.6	2250.8	2253.2	2259.9	2260.4	2265.7
52.5°	2152.1	2127.2	2111.4	2096.9	2091.7	2086.5	2088.7	2087.7	2090.8	2089.2	2093.5
55°	1986.4	1974.6	1969.7	1964.3	1965.0	1963.6	1964.6	1959.3	1956.1	1952.1	1955.8
57.5°	1850.3	1848.8	1852.1	1854.3	1860.6	1862.8	1864.3	1858.2	1852.4	1847.2	1850.2
60°	1745.5	1748.1	1756.4	1763.1	1772.2	1776.3	1778.9	1775.3	1771.2	1766.9	1769.4
62.5°	1642.2	1646.2	1656.2	1663.6	1674.5	1680.1	1686.4	1686.7	1688.3	1686.7	1688.4
65°	1522.2	1527.2	1536.2	1542.4	1552.5	1557.4	1563.9	1565.0	1568.5	1567.7	1570.8
67.5°	1431.1	1435.6	1443.1	1449.0	1457.9	1463.1	1468.6	1469.0	1470.2	1470.0	1472.8
70°	1333.8	1336.1	1342.8	1347.7	1356.7	1362.0	1368.4	1370.3	1374.3	1374.9	1378.1
72.5°	1230.1	1229.2	1233.2	1235.5	1242.2	1246.4	1254.5	1258.9	1265.6	1267.4	1269.8
75°	1117.2	1116.3	1121.0	1123.0	1128.8	1132.9	1142.0	1148.0	1158.3	1162.7	1161.6
77.5°	986.5	988.8	997.7	1002.6	1010.4	1015.7	1027.5	1036.9	1055.9	1064.3	1055.8
80°	840.3	842.7	852.0	856.6	866.7	873.1	886.4	897.5	914.5	918.2	913.4
82.5°	660.6	661.3	669.7	673.1	686.3	695.7	712.5	721.3	731.9	730.2	729.0
85°	450.5	456.5	466.9	477.4	493.3	508.7	524.5	537.7	528.3	543.0	526.7
87.5°	240.7	240.1	254.2	251.9	274.4	287.3	301.0	307.6	315.0	313.5	313.7
90°	44.6	42.1	43.1	40.2	42.3	39.1	42.3	39.4	43.4	39.6	45.9
92.5°	35.5	34.3	32.7	31.6	30.0	28.8	27.2	25.9	24.5	23.1	24.5
95°	42.9	41.6	40.3	38.8	37.5	36.3	35.0	33.7	32.5	31.2	32.8
97.5°	52.1	51.3	50.6	49.8	49.1	48.4	47.7	47.0	46.0	45.3	46.3
100°	58.6	58.6	58.6	58.6	58.3	58.3	58.3	58.3	58.3	58.3	59.2
102.5°	107.0	104.5	102.1	99.5	97.1	94.6	92.1	89.7	87.3	84.9	88.5
105°	233.9	224.4	214.7	205.2	195.5	186.0	176.4	166.9	157.3	147.8	157.6
107.5°	428.9	411.4	393.8	376.5	358.9	341.4	324.0	306.7	289.3	271.9	287.4
110°	596.2	577.6	559.0	540.5	521.9	503.2	484.7	466.3	447.8	429.4	444.2



TEST NUMBER: P1444844  
 CATALOG NUMBER: EHBR1-54-UNV-TA-L940-UPL18

**CANDELA DISTRIBUTION (continued):**

	247.5°	250°	252.5°	255°	257.5°	260°	262.5°	265°	267.5°	270°	272.5°
112.5°	664.7	652.2	640.3	628.2	616.2	604.3	592.3	580.4	568.6	556.7	563.8
115°	656.7	650.9	645.0	639.2	633.4	627.5	621.7	616.1	610.4	604.8	605.3
117.5°	604.6	602.4	600.3	598.1	596.1	594.0	592.2	590.4	588.3	586.8	582.7
120°	529.5	529.5	529.6	530.1	530.5	531.0	531.3	532.1	532.8	533.6	528.1
122.5°	455.6	456.3	457.3	458.4	459.5	460.9	462.1	463.7	465.3	466.8	461.4
125°	392.3	393.1	393.9	394.8	395.6	397.1	398.3	399.9	401.3	403.0	398.5
127.5°	348.2	348.1	347.7	347.8	347.7	348.1	348.4	349.1	349.8	350.7	347.8
130°	322.2	321.0	319.6	318.6	317.5	316.9	316.5	315.8	315.5	315.5	314.4
132.5°	309.6	307.6	305.7	303.9	302.2	300.8	299.3	298.5	297.6	296.8	296.5
135°	305.6	303.2	300.8	298.5	296.3	294.8	292.8	291.5	290.1	289.0	289.6
137.5°	305.1	302.8	300.4	298.2	296.0	294.4	292.4	291.0	289.8	288.6	289.4
140°	309.0	306.6	304.3	302.1	300.2	298.5	296.7	295.4	293.8	293.1	293.4
142.5°	311.7	309.9	307.6	305.8	303.9	302.3	300.9	299.7	298.2	297.5	298.0
145°	315.3	313.9	312.2	310.7	309.4	308.3	306.8	306.1	305.3	304.9	305.2
147.5°	317.7	316.8	315.3	314.3	313.0	312.5	311.5	311.0	310.3	310.1	310.1
150°	318.3	317.6	316.8	316.1	315.5	315.0	314.4	314.2	313.8	313.6	313.7
152.5°	317.6	317.1	316.5	316.0	315.5	315.2	314.8	314.6	314.4	314.3	314.3
155°	315.8	315.6	315.4	315.3	315.1	315.3	315.1	315.5	315.3	315.5	315.7
157.5°	316.1	316.3	316.2	316.6	316.7	316.9	316.9	317.4	317.5	318.1	318.3
160°	318.2	318.3	318.3	318.5	318.6	318.8	319.1	319.3	319.6	319.8	320.3
162.5°	320.1	320.6	320.8	321.0	321.6	321.9	322.3	323.0	323.4	323.9	324.5
165°	325.0	325.1	325.1	325.1	325.5	325.7	325.9	326.4	326.6	327.2	327.8
167.5°	329.3	329.5	329.5	329.7	330.0	330.5	330.7	331.3	331.8	332.5	332.9
170°	335.4	335.4	335.4	335.4	335.4	335.8	335.9	336.0	336.2	336.7	337.0
172.5°	342.0	342.0	341.6	342.0	341.6	342.0	342.0	342.1	342.1	342.3	342.4
175°	345.7	346.1	346.2	346.6	346.5	346.6	346.7	346.9	346.9	347.2	347.2
177.5°	349.5	349.6	349.6	349.6	349.6	349.7	349.7	349.7	349.7	349.6	349.6
180°	348.9	348.9	348.9	348.9	348.9	348.9	348.9	348.9	348.9	348.9	348.9



TEST NUMBER: P1444844  
 CATALOG NUMBER: EHBR1-54-UNV-TA-L940-UPL18

**CANDELA DISTRIBUTION (continued):**

	275°	277.5°	280°	282.5°	285°	287.5°	290°	292.5°	295°	297.5°	300°
0°	43163.3	43163.3	43163.3	43163.3	43163.3	43163.3	43163.3	43163.3	43163.3	43163.3	43163.3
2.5°	43703.7	43681.8	43704.1	43681.4	43704.1	43676.9	43695.4	43665.9	43673.5	43642.9	43650.8
5°	45356.1	45321.3	45339.8	45294.6	45299.4	45238.9	45237.8	45167.4	45148.8	45068.7	45033.5
7.5°	46692.4	46681.0	46687.5	46658.3	46654.9	46613.7	46594.0	46535.8	46499.2	46425.4	46375.0
10°	46480.9	46515.0	46523.8	46558.5	46565.7	46600.1	46607.2	46641.6	46648.9	46674.3	46674.6
12.5°	44365.3	44481.0	44508.6	44651.5	44711.6	44875.1	44962.8	45142.9	45249.9	45429.6	45540.0
15°	40289.7	40489.8	40569.6	40848.6	41002.9	41328.6	41533.2	41907.3	42171.2	42568.4	42851.7
17.5°	34680.3	34960.0	35086.2	35464.5	35711.4	36192.0	36538.6	37108.8	37545.4	38179.2	38681.5
20°	28460.0	28770.8	28942.1	29373.8	29665.0	30226.7	30659.2	31360.0	31944.4	32747.4	33434.2
22.5°	22442.3	22738.1	22928.3	23367.3	23695.3	24281.1	24764.5	25504.3	26159.0	27063.9	27887.3
25°	17231.4	17502.5	17674.4	18071.6	18379.6	18917.9	19379.5	20090.9	20731.6	21639.2	22483.6
27.5°	13173.3	13400.2	13566.0	13904.6	14176.2	14632.8	15029.3	15617.3	16169.3	16954.6	17706.4
30°	10085.2	10286.5	10447.7	10742.7	10994.4	11390.2	11738.9	12232.8	12689.7	13314.5	13912.6
32.5°	7706.8	7880.0	8023.7	8281.9	8510.3	8866.8	9180.9	9613.7	10005.9	10535.8	11027.9
35°	5876.1	6217.1	6192.8	6548.9	6606.2	6862.0	7142.3	7520.7	7868.0	8318.7	8737.4
37.5°	4560.9	4656.6	4759.4	4916.8	5082.2	5314.9	5551.7	6014.1	6183.7	6524.3	6871.0
40°	3677.9	3742.6	3810.4	3916.8	4032.6	4196.6	4369.0	4589.7	4815.7	5091.8	5373.8
42.5°	3109.3	3146.0	3189.1	3251.7	3323.0	3427.0	3542.3	3691.9	3849.2	4043.5	4241.9
45°	2778.0	2760.6	2773.4	2807.0	2850.0	2913.2	2985.9	3078.6	3181.0	3306.9	3440.9
47.5°	2469.1	2476.1	2479.9	2498.2	2521.2	2563.6	2607.8	2670.7	2792.0	2829.0	2902.2
50°	2265.1	2268.6	2267.3	2276.7	2288.3	2315.9	2344.5	2387.1	2429.6	2485.9	2539.7
52.5°	2094.2	2098.9	2098.3	2104.4	2110.6	2128.1	2146.1	2176.2	2204.1	2239.9	2270.8
55°	1959.2	1965.7	1968.3	1973.4	1976.4	1985.5	1992.7	2007.1	2019.0	2039.3	2058.0
57.5°	1855.3	1864.3	1868.4	1870.2	1866.6	1866.0	1863.7	1866.6	1869.1	1880.0	1890.5
60°	1773.6	1780.7	1781.9	1780.7	1774.0	1769.3	1761.6	1759.1	1757.9	1763.1	1768.9
62.5°	1688.0	1690.6	1688.8	1686.7	1679.0	1674.4	1666.4	1663.5	1660.8	1664.5	1667.6
65°	1569.6	1571.9	1569.6	1568.3	1561.4	1557.8	1551.1	1548.8	1544.9	1546.0	1545.3
67.5°	1473.5	1475.7	1474.0	1472.2	1467.4	1465.1	1460.2	1457.0	1452.3	1450.6	1447.4
70°	1377.6	1379.4	1376.7	1374.9	1369.5	1367.4	1362.8	1361.8	1358.2	1357.3	1353.7
72.5°	1267.4	1267.6	1263.8	1262.7	1258.7	1258.5	1256.5	1258.3	1258.2	1260.1	1259.3
75°	1154.7	1153.1	1148.3	1147.4	1144.4	1145.8	1143.8	1146.5	1146.9	1151.0	1151.4
77.5°	1041.7	1035.8	1026.7	1022.4	1016.2	1015.5	1012.0	1014.4	1013.5	1018.4	1020.2
80°	899.0	891.9	880.1	874.5	867.4	866.2	863.0	866.2	864.7	870.3	874.3
82.5°	717.7	711.5	699.4	694.9	686.6	687.4	683.8	687.4	686.9	695.2	700.0
85°	530.9	526.8	514.3	503.3	491.0	483.7	476.7	475.4	473.4	476.7	479.6
87.5°	306.7	302.8	293.1	286.7	265.1	266.0	257.5	257.0	255.0	253.0	257.5
90°	44.0	49.2	47.5	52.3	51.3	56.8	56.3	61.5	60.0	64.9	64.3
92.5°	25.9	27.2	28.6	30.0	31.4	32.7	34.1	35.5	38.5	41.1	44.4
95°	34.4	36.0	37.5	39.2	40.8	42.4	44.0	45.6	49.9	54.2	58.6
97.5°	47.6	48.4	49.5	50.6	51.6	52.6	53.8	54.8	59.6	64.3	68.9
100°	60.0	60.8	61.7	62.6	63.4	64.3	65.1	66.0	75.3	84.3	93.3
102.5°	92.0	95.7	99.3	102.9	106.7	110.3	113.8	117.5	138.3	159.0	179.7
105°	167.5	177.4	187.4	197.2	207.1	217.0	226.9	236.8	270.1	303.3	336.6
107.5°	303.1	318.6	334.3	350.0	365.7	381.4	397.1	412.7	445.1	477.7	510.1
110°	459.1	474.1	489.0	504.0	518.9	533.9	548.9	564.1	583.7	603.1	622.8



TEST NUMBER: P1444844  
 CATALOG NUMBER: EHBR1-54-UNV-TA-L940-UPL18

**CANDELA DISTRIBUTION (continued):**

	275°	277.5°	280°	282.5°	285°	287.5°	290°	292.5°	295°	297.5°	300°
112.5°	571.2	578.4	585.8	593.2	600.5	608.1	615.5	623.0	633.0	642.9	652.9
115°	605.8	606.3	607.0	607.6	608.3	608.9	609.9	610.7	614.2	617.6	621.0
117.5°	578.7	574.9	571.2	567.3	563.6	560.2	556.7	553.2	553.0	552.8	553.0
120°	523.2	517.9	512.9	507.7	502.8	498.0	493.3	488.7	486.7	484.6	482.8
122.5°	456.4	451.3	446.4	441.3	436.6	432.0	427.5	423.1	421.9	420.9	419.9
125°	394.3	390.2	386.1	382.3	378.6	375.0	371.5	368.1	368.8	369.4	370.5
127.5°	345.5	343.1	340.9	338.8	337.1	335.1	333.6	331.9	334.1	336.2	338.4
130°	313.5	312.8	312.4	311.6	311.6	311.4	311.4	311.3	314.5	317.2	320.5
132.5°	297.0	297.2	297.8	298.2	299.2	300.0	301.2	302.0	305.4	308.7	312.0
135°	290.1	290.9	292.1	293.2	294.8	296.0	297.7	299.1	302.5	305.4	308.9
137.5°	290.4	291.3	292.7	293.9	295.7	297.1	299.1	300.6	303.4	306.0	308.8
140°	294.4	295.1	296.4	297.6	298.9	300.3	302.1	303.4	306.0	308.1	310.2
142.5°	299.1	299.6	300.7	301.9	303.3	304.5	306.0	307.2	309.1	310.7	312.8
145°	306.0	306.5	307.5	308.4	309.5	310.5	311.7	312.8	314.2	315.4	316.8
147.5°	310.8	311.3	312.1	312.9	313.9	314.7	315.5	316.3	317.5	318.3	319.6
150°	314.2	314.6	315.2	315.5	316.3	317.0	317.9	318.4	319.4	320.1	321.1
152.5°	315.1	315.3	315.8	316.1	316.9	317.4	318.0	318.6	319.6	320.1	321.0
155°	316.2	316.9	317.5	318.0	318.8	319.1	319.9	320.4	321.2	321.8	322.6
157.5°	319.0	319.3	320.1	320.5	321.2	321.7	322.3	322.8	323.7	324.1	324.8
160°	321.0	321.7	322.3	323.1	323.8	324.4	325.1	325.9	326.5	327.0	327.7
162.5°	325.1	325.7	326.4	326.8	327.5	328.1	328.6	329.2	330.2	330.5	331.5
165°	328.5	329.2	330.0	330.5	331.3	332.1	332.7	333.4	333.9	334.6	335.0
167.5°	333.6	334.0	334.9	335.6	336.3	336.9	337.6	338.2	338.8	339.1	339.8
170°	337.5	338.1	338.7	339.3	339.9	340.3	341.1	341.4	342.2	342.6	343.3
172.5°	342.8	343.2	343.6	344.0	344.3	345.0	345.4	345.6	346.2	346.6	347.0
175°	347.2	347.2	347.4	347.6	347.7	347.7	347.9	348.2	348.3	348.5	348.7
177.5°	349.7	349.9	350.0	350.1	350.2	350.4	350.5	350.6	350.6	350.6	350.6
180°	348.9	348.9	348.9	348.9	348.9	348.9	348.9	348.9	348.9	348.9	348.9



TEST NUMBER: P1444844  
 CATALOG NUMBER: EHBR1-54-UNV-TA-L940-UPL18

**CANDELA DISTRIBUTION (continued):**

	302.5°	305°	307.5°	310°	312.5°	315°	317.5°	320°	322.5°	325°	327.5°
0°	43163.3	43163.3	43163.3	43163.3	43163.3	43163.3	43163.3	43163.3	43163.3	43163.3	43163.3
2.5°	43620.2	43622.1	43586.9	43585.0	43552.0	43547.9	43515.8	43506.0	43479.9	43470.5	43443.9
5°	44943.6	44900.8	44801.7	44743.5	44645.6	44580.8	44474.9	44405.8	44303.6	44226.4	44123.6
7.5°	46282.1	46215.5	46104.3	46014.3	45878.4	45770.0	45611.1	45481.0	45308.8	45159.8	44979.1
10°	46674.6	46664.4	46636.0	46594.8	46531.6	46460.6	46352.4	46239.7	46088.8	45925.0	45724.0
12.5°	45708.8	45813.0	45955.3	46039.6	46142.1	46187.1	46229.1	46218.6	46190.9	46108.0	45991.9
15°	43262.0	43555.1	43943.2	44243.9	44590.0	44841.4	45119.1	45292.1	45464.8	45544.4	45593.2
17.5°	39369.9	39924.7	40620.6	41197.3	41862.7	42397.0	42982.9	43423.9	43877.4	44202.3	44496.1
20°	34370.4	35174.4	36158.5	37027.9	38038.9	38917.4	39880.1	40670.5	41485.5	42122.9	42726.1
22.5°	28947.5	29902.4	31092.3	32194.4	33497.7	34669.0	35990.5	37140.7	38341.6	39344.9	40314.9
25°	23615.2	24662.3	25963.4	27193.1	28669.1	30031.5	31598.7	33032.2	34584.4	35932.0	37263.2
27.5°	18745.9	19774.0	21102.2	22411.3	23972.1	25423.8	27103.0	28682.3	30449.6	32079.4	33746.6
30°	14743.9	15615.8	16806.8	18074.7	19614.0	21091.3	22788.8	24413.1	26251.6	28031.1	29909.0
32.5°	11681.1	12345.4	13281.7	14353.8	15774.2	17180.5	18796.8	20364.7	22175.3	23972.8	25925.9
35°	9276.9	9795.0	10509.0	11345.6	12548.4	13760.7	15190.3	16616.3	18305.3	20011.1	21909.4
37.5°	7315.4	7735.7	8294.8	8923.4	9888.1	10882.9	12055.2	13237.4	14705.1	16217.2	17937.6
40°	5712.5	6052.9	6488.2	6956.9	7685.3	8451.9	9358.5	10275.2	11454.4	12690.1	14114.1
42.5°	4487.6	4738.7	5046.2	5388.7	6068.4	6475.4	7090.1	7753.2	8620.1	9517.1	10587.7
45°	3603.9	3775.2	3988.5	4218.2	4533.7	4878.8	5299.9	5741.5	6564.9	6968.9	7619.9
47.5°	3009.7	3124.6	3260.3	3405.1	3591.1	3791.9	4041.6	4296.9	4627.1	4969.3	5370.5
50°	2609.4	2726.4	2772.9	2847.9	2955.6	3070.2	3211.0	3351.8	3528.9	3708.4	3914.9
52.5°	2312.3	2350.4	2401.1	2448.8	2515.5	2646.1	2688.3	2761.9	2861.2	2958.3	3066.8
55°	2085.5	2110.3	2143.3	2172.0	2212.4	2250.9	2306.6	2355.6	2421.7	2480.3	2552.3
57.5°	1908.9	1924.8	1947.6	1966.5	1992.6	2014.3	2046.9	2073.5	2111.6	2144.7	2188.3
60°	1780.7	1791.2	1806.6	1818.9	1835.4	1846.8	1863.0	1875.5	1895.6	1912.4	1936.7
62.5°	1675.8	1681.2	1691.3	1698.6	1709.1	1714.9	1723.5	1728.9	1739.9	1748.4	1762.0
65°	1550.1	1551.4	1558.1	1561.2	1569.5	1572.5	1579.5	1582.1	1591.3	1597.4	1609.4
67.5°	1447.0	1444.2	1444.3	1442.0	1443.1	1440.7	1441.3	1438.7	1442.5	1444.3	1453.5
70°	1353.0	1349.0	1347.7	1343.4	1342.1	1337.7	1336.4	1332.3	1331.9	1330.6	1333.8
72.5°	1261.4	1260.2	1260.5	1257.5	1257.2	1254.2	1254.3	1252.4	1254.5	1255.4	1259.6
75°	1155.9	1156.3	1158.3	1155.6	1156.5	1153.8	1154.8	1152.4	1153.7	1153.2	1157.4
77.5°	1027.6	1030.7	1036.3	1035.2	1036.9	1034.0	1035.3	1032.0	1032.9	1030.7	1032.3
80°	883.4	889.7	897.3	897.0	900.2	898.1	900.9	897.7	899.0	895.2	894.2
82.5°	712.1	717.5	725.5	725.8	732.8	734.1	742.0	741.6	746.5	743.4	741.1
85°	486.8	490.4	497.5	501.3	508.6	513.1	520.5	523.6	518.2	528.1	520.2
87.5°	254.2	263.7	258.3	270.6	267.8	280.2	277.5	289.1	286.9	296.7	295.4
90°	71.0	71.1	78.1	78.6	87.2	88.8	94.7	92.6	98.3	96.5	102.0
92.5°	47.0	50.3	53.3	56.3	59.3	62.4	59.4	56.7	53.9	51.4	48.4
95°	63.0	67.3	71.6	76.0	80.3	84.7	80.0	75.6	70.9	66.2	61.5
97.5°	73.6	78.4	83.0	87.7	92.4	97.1	91.6	86.1	80.5	75.2	69.7
100°	102.3	111.5	120.6	129.5	138.7	147.8	137.6	127.3	117.2	106.9	96.6
102.5°	200.7	221.5	242.3	263.2	283.9	304.6	282.9	261.4	239.5	217.8	196.0
105°	369.9	403.2	436.5	469.6	503.0	536.5	501.3	466.0	430.7	395.7	360.2
107.5°	542.7	575.1	607.9	640.2	672.8	705.5	669.9	634.1	598.6	562.8	527.0
110°	642.6	662.2	682.0	701.8	721.5	741.4	715.4	689.5	663.6	637.5	611.5



TEST NUMBER: P1444844  
 CATALOG NUMBER: EHBR1-54-UNV-TA-L940-UPL18

**CANDELA DISTRIBUTION (continued):**

	302.5°	305°	307.5°	310°	312.5°	315°	317.5°	320°	322.5°	325°	327.5°
112.5°	663.0	673.2	683.2	693.4	703.6	713.6	695.3	677.0	658.5	640.2	621.7
115°	624.8	628.3	631.9	635.6	639.1	642.7	630.5	618.3	606.2	594.0	581.4
117.5°	552.9	553.1	552.9	553.4	553.2	553.3	546.7	540.3	533.6	526.9	520.2
120°	480.8	479.1	477.2	475.3	473.3	471.2	469.0	466.6	464.0	461.4	458.7
122.5°	418.8	418.1	417.0	416.0	414.8	413.7	413.1	412.7	412.1	411.5	410.8
125°	371.3	372.0	372.8	373.7	374.2	375.0	375.0	375.2	375.1	375.3	375.2
127.5°	340.3	342.6	344.5	346.5	348.2	350.4	350.8	351.6	352.0	352.5	353.0
130°	323.3	326.4	329.2	331.9	334.6	337.7	337.9	338.5	338.8	339.2	339.6
132.5°	315.3	318.5	321.6	325.0	327.9	331.0	331.3	331.9	331.9	332.5	332.7
135°	311.9	315.0	317.8	321.2	323.8	326.8	327.0	327.3	327.3	327.8	327.9
137.5°	311.3	314.1	316.5	319.1	321.2	323.8	323.8	324.2	324.1	324.6	324.7
140°	312.3	314.6	316.6	318.7	320.8	322.8	322.7	322.7	322.6	322.6	322.4
142.5°	314.4	316.2	317.7	319.6	321.0	322.7	322.1	321.8	321.5	321.1	320.8
145°	318.1	319.5	320.7	321.9	322.7	324.1	323.4	322.9	322.0	321.6	321.0
147.5°	320.4	321.5	322.1	323.2	323.6	324.7	323.8	323.3	322.6	321.8	321.0
150°	321.7	322.8	323.5	324.1	324.8	325.6	324.7	323.9	322.9	322.1	321.3
152.5°	321.7	322.5	323.2	323.7	324.3	324.9	323.8	323.4	322.3	321.3	320.4
155°	322.9	323.7	324.0	324.7	324.9	325.3	324.4	323.9	323.1	322.3	321.4
157.5°	325.2	325.9	326.4	326.6	327.0	327.5	326.9	326.4	325.7	325.3	324.6
160°	328.1	328.6	329.1	329.4	329.9	330.1	329.5	329.4	328.9	328.2	327.7
162.5°	331.9	332.7	333.1	333.5	334.1	334.5	333.9	333.5	332.9	332.3	331.7
165°	335.6	336.0	336.5	337.0	337.2	337.6	337.3	337.0	336.5	336.3	335.8
167.5°	340.1	340.8	341.1	341.5	341.7	342.0	341.6	341.6	341.1	340.7	340.2
170°	343.6	344.1	344.7	345.1	345.4	345.5	345.5	345.3	344.8	344.5	344.1
172.5°	347.4	348.0	348.1	348.4	348.5	348.9	348.6	348.2	348.0	347.6	347.1
175°	348.7	348.8	349.2	349.2	349.2	349.4	349.1	348.7	348.4	348.1	347.8
177.5°	350.6	350.6	350.6	350.5	350.5	350.5	350.3	350.0	349.8	349.6	349.2
180°	348.9	348.9	348.9	348.9	348.9	348.9	348.9	348.9	348.9	348.9	348.9



TEST NUMBER: P1444844  
 CATALOG NUMBER: EHBR1-54-UNV-TA-L940-UPL18

**CANDELA DISTRIBUTION (continued):**

	330°	332.5°	335°	337.5°	340°	342.5°	345°	347.5°	350°	352.5°	355°
0°	43163.3	43163.3	43163.3	43163.3	43163.3	43163.3	43163.3	43163.3	43163.3	43163.3	43163.3
2.5°	43434.4	43415.6	43403.4	43387.9	43378.4	43366.5	43357.7	43350.1	43344.1	43338.5	43334.3
5°	44045.2	43948.1	43872.8	43791.2	43724.2	43657.3	43605.8	43563.1	43533.7	43511.6	43498.4
7.5°	44822.9	44645.1	44487.1	44320.7	44171.6	44024.9	43898.5	43789.6	43707.9	43654.9	43622.7
10°	45517.2	45279.4	45044.0	44796.4	44561.6	44333.8	44123.6	43938.6	43792.3	43695.0	43638.3
12.5°	45828.6	45625.9	45385.6	45116.7	44828.9	44537.8	44254.0	43998.0	43783.1	43639.0	43555.9
15°	45554.4	45471.2	45308.2	45099.4	44826.3	44525.3	44192.0	43878.8	43590.8	43403.9	43295.6
17.5°	44662.5	44778.7	44766.2	44686.4	44490.1	44236.7	43897.1	43545.3	43184.9	42935.2	42798.8
20°	43157.5	43522.6	43707.9	43802.9	43725.8	43561.5	43254.0	42897.0	42476.9	42150.9	41951.9
22.5°	41042.6	41687.1	42088.8	42382.7	42445.0	42389.0	42117.6	41778.0	41309.7	40917.9	40623.9
25°	38320.0	39264.2	39899.0	40396.6	40589.9	40639.8	40408.8	40071.1	39549.2	39092.6	38689.0
27.5°	35113.1	36340.0	37187.6	37856.2	38158.1	38289.0	38076.4	37731.7	37114.2	36569.2	36042.0
30°	31502.8	32958.5	33978.9	34780.7	35148.6	35321.5	35095.6	34711.1	33992.5	33336.6	32672.4
32.5°	27638.6	29231.5	30343.4	31214.1	31578.7	31741.4	31445.9	31014.0	30183.5	29410.8	28636.3
35°	23592.8	25200.6	26322.0	27169.5	27475.1	27573.1	27195.3	26696.0	25775.8	24927.9	24083.2
37.5°	19464.6	20960.5	21979.7	22740.4	22929.4	22946.3	22491.0	21939.7	20972.5	20136.3	19295.6
40°	15372.2	16633.7	17456.5	18065.4	18130.9	18072.4	17577.5	17022.6	16117.7	15368.6	14630.6
42.5°	11517.3	12469.5	13056.6	13473.8	13449.0	13333.3	12879.5	12402.5	11656.1	11085.5	10504.7
45°	8214.7	8842.5	9185.8	9430.0	9351.6	9241.4	8888.2	8553.8	8046.5	7678.0	7287.7
47.5°	5706.9	6456.7	6326.2	6803.4	6392.2	6663.8	6098.2	5786.4	5517.1	5321.4	5100.8
50°	4085.6	4257.4	4340.4	4397.1	4367.0	4325.3	4223.6	4132.8	4009.8	3920.2	3815.7
52.5°	3155.2	3241.1	3288.1	3322.2	3315.5	3300.4	3256.0	3215.5	3157.9	3120.0	3074.2
55°	2672.6	2673.9	2760.4	2723.3	2778.2	2713.9	2739.1	2668.0	2679.5	2618.4	2577.2
57.5°	2220.9	2256.1	2271.9	2287.2	2282.9	2280.2	2263.1	2254.4	2235.1	2229.1	2215.4
60°	1953.6	1971.9	1975.7	1982.8	1976.9	1974.6	1961.2	1956.5	1943.4	1941.1	1932.0
62.5°	1770.2	1779.6	1779.6	1779.6	1772.0	1764.6	1749.7	1741.9	1730.9	1728.5	1723.2
65°	1617.2	1627.0	1628.6	1630.8	1625.2	1619.4	1606.3	1597.8	1586.4	1582.1	1576.0
67.5°	1459.4	1469.8	1473.3	1478.6	1475.4	1474.2	1465.3	1461.9	1454.4	1452.7	1447.0
70°	1335.4	1339.7	1339.4	1339.2	1332.3	1326.0	1315.6	1310.6	1302.8	1301.2	1296.1
72.5°	1261.6	1264.7	1262.8	1260.1	1250.9	1241.7	1229.5	1220.5	1210.3	1204.0	1196.7
75°	1157.8	1161.9	1159.2	1157.6	1149.4	1143.3	1133.5	1128.6	1121.4	1119.3	1114.3
77.5°	1030.4	1032.3	1028.1	1027.6	1021.4	1017.5	1010.2	1008.9	1003.7	1003.8	999.0
80°	888.5	887.3	880.6	879.4	873.1	871.6	865.8	866.1	861.9	863.6	860.3
82.5°	731.1	727.1	718.3	715.7	708.5	707.9	704.0	707.2	704.7	708.5	706.3
85°	523.9	525.0	521.2	521.2	519.1	519.8	519.4	521.8	522.1	525.6	525.5
87.5°	292.1	296.3	295.4	299.3	299.2	303.4	304.9	311.3	312.1	318.0	318.0
90°	100.2	106.6	104.6	111.1	110.5	117.4	117.9	124.8	124.6	130.4	128.9
92.5°	45.7	42.9	40.4	37.5	36.1	34.3	33.6	31.6	30.6	28.8	27.5
95°	56.8	52.2	47.5	42.9	41.3	39.5	37.9	36.3	34.7	33.1	31.5
97.5°	64.2	58.6	53.1	47.6	46.2	44.8	43.3	41.9	40.5	39.1	37.8
100°	86.3	76.0	65.9	55.4	54.2	53.1	51.9	50.8	49.6	48.3	47.0
102.5°	174.3	152.4	130.6	108.7	104.6	100.4	96.3	92.0	87.9	83.8	79.7
105°	325.0	289.6	254.2	218.8	207.5	196.2	185.0	173.7	162.4	151.1	139.9
107.5°	491.2	455.2	419.4	383.5	362.9	342.1	321.2	300.3	279.7	258.7	237.8
110°	585.5	559.5	533.2	506.9	490.5	473.7	457.0	440.2	423.6	406.8	390.0



TEST NUMBER: P1444844  
 CATALOG NUMBER: EHBR1-54-UNV-TA-L940-UPL18

**CANDELA DISTRIBUTION (continued):**

	330°	332.5°	335°	337.5°	340°	342.5°	345°	347.5°	350°	352.5°	355°
112.5°	603.1	584.5	566.1	547.2	539.8	532.2	524.8	517.2	509.7	501.9	494.4
115°	569.0	556.8	544.3	531.6	529.3	526.7	524.2	521.4	519.0	516.2	513.4
117.5°	513.6	506.7	499.9	493.0	493.6	494.3	495.1	495.6	496.0	496.4	496.8
120°	456.1	453.5	451.0	448.2	451.0	453.4	456.1	458.5	460.9	463.0	465.3
122.5°	410.2	409.4	408.8	407.8	411.1	414.4	417.4	420.4	423.3	425.9	428.5
125°	375.4	375.2	375.2	374.9	378.3	381.6	384.8	387.6	390.6	393.2	395.9
127.5°	353.6	354.0	354.7	354.9	357.7	359.8	362.4	364.4	366.7	368.4	370.3
130°	340.0	340.1	340.7	340.9	343.3	345.6	348.1	349.9	352.1	353.6	355.1
132.5°	333.1	333.2	333.6	333.8	335.9	337.6	339.6	340.8	342.5	343.4	344.5
135°	328.3	328.2	328.6	328.6	330.5	332.3	334.0	335.3	336.9	337.7	338.7
137.5°	325.0	325.0	325.1	325.1	327.0	328.6	330.1	331.3	332.6	333.6	334.4
140°	322.6	322.3	322.5	322.3	323.9	325.3	326.8	327.9	329.2	329.8	330.6
142.5°	320.4	319.7	319.8	319.1	320.4	321.4	322.5	323.4	324.3	324.9	325.3
145°	320.3	319.4	319.0	318.3	319.1	320.0	320.9	321.8	322.2	322.5	323.0
147.5°	320.5	319.6	318.8	318.0	319.0	319.5	320.1	320.4	321.1	321.3	321.6
150°	320.4	319.3	318.3	317.3	317.9	318.3	318.6	319.2	319.5	319.6	319.8
152.5°	319.5	318.4	317.5	316.3	316.6	316.9	317.0	317.1	317.4	317.4	317.4
155°	320.7	319.6	318.7	317.6	318.0	318.0	318.1	318.1	318.0	317.9	317.8
157.5°	323.8	322.7	322.3	321.2	321.1	321.1	321.0	320.5	320.5	320.1	319.7
160°	327.2	326.4	325.7	325.0	324.7	324.5	324.5	323.9	323.7	323.2	322.9
162.5°	330.9	330.2	329.2	328.4	328.1	328.0	327.8	327.3	327.2	326.6	326.3
165°	335.3	334.7	334.2	333.2	333.1	332.8	332.6	331.9	331.7	331.0	330.5
167.5°	339.7	339.1	338.5	337.6	337.5	337.4	337.3	336.9	336.7	336.1	336.0
170°	343.7	343.1	342.8	342.1	341.7	341.6	341.3	341.0	340.5	340.1	339.7
172.5°	346.6	346.1	345.5	344.8	344.8	344.6	344.3	344.1	343.7	343.4	343.2
175°	347.2	346.9	346.2	345.9	345.8	345.6	345.5	345.3	345.0	344.8	344.5
177.5°	349.0	348.8	348.2	348.0	347.9	347.9	347.7	347.5	347.5	347.4	347.2
180°	348.9	348.9	348.9	348.9	348.9	348.9	348.9	348.9	348.9	348.9	348.9



TEST NUMBER: P1444844  
CATALOG NUMBER: EHBR1-54-UNV-TA-L940-UPL18

**CANDELA DISTRIBUTION (continued):**

	357.5°	360°
0°	43163.3	43163.3
2.5°	43330.5	43328.2
5°	43491.5	43489.0
7.5°	43614.1	43613.3
10°	43628.5	43636.0
12.5°	43541.5	43547.5
15°	43287.3	43299.2
17.5°	42801.3	42816.8
20°	41964.0	41980.2
22.5°	40608.1	40614.9
25°	38636.8	38608.9
27.5°	35949.4	35901.2
30°	32533.0	32486.4
32.5°	28459.6	28430.6
35°	23874.4	23856.1
37.5°	19047.1	19009.7
40°	14360.7	14251.6
42.5°	10250.3	10058.8
45°	7083.9	6856.9
47.5°	4945.3	4805.0
50°	3748.4	3703.1
52.5°	3054.3	3043.7
55°	2577.1	2572.5
57.5°	2218.4	2216.9
60°	1936.7	1936.2
62.5°	1726.7	1727.5
65°	1578.8	1579.0
67.5°	1448.5	1447.6
70°	1298.0	1296.9
72.5°	1194.4	1192.6
75°	1114.3	1113.2
77.5°	1000.4	998.7
80°	862.5	860.3
82.5°	709.4	706.9
85°	529.2	529.4
87.5°	323.7	323.7
90°	134.5	132.2
92.5°	26.5	25.3
95°	29.9	28.3
97.5°	36.4	35.0
100°	45.9	44.7
102.5°	75.5	71.4
105°	128.7	117.4
107.5°	217.1	196.3
110°	373.2	356.4



TEST NUMBER: P1444844  
CATALOG NUMBER: EHBR1-54-UNV-TA-L940-UPL18

**CANDELA DISTRIBUTION (continued):**

	357.5°	360°
112.5°	486.6	479.0
115°	510.4	507.7
117.5°	497.0	497.2
120°	467.0	469.2
122.5°	430.8	433.1
125°	398.2	400.5
127.5°	371.7	373.0
130°	356.0	357.4
132.5°	345.2	345.6
135°	339.1	339.6
137.5°	334.6	335.0
140°	330.7	331.1
142.5°	325.5	325.7
145°	323.2	323.2
147.5°	321.1	321.1
150°	319.6	319.4
152.5°	317.0	316.9
155°	317.3	317.0
157.5°	319.1	318.6
160°	322.2	321.8
162.5°	325.5	325.1
165°	329.7	329.1
167.5°	335.2	335.0
170°	339.2	338.9
172.5°	342.8	342.4
175°	344.3	344.1
177.5°	347.2	346.9
180°	348.9	348.9

LM-79-2019: Approved Method: Electrical and Photometric Measurements of Solid-  
State Lighting Products

Report Prepared for

Cooper Lighting Solutions

Metalux

Report Number: SP1-2506-472-7

Test Date: 08/04/2025

Luminaire Tested: EHBR-60-L940-N

Data in this report applies to families of products including EHBR-60-L940-N

**Test Information**

Test Method: LM-79-2019  
 Report Number: SP1-2506-472-7  
 Test Lab: COOPER LIGHTING SOLUTIONS  
 Photometer: SP1 - 76IN SPHERE  
 Measurement Geometry: 4π  
 Issue Date: 08/05/2025  
 Manufacturer: COOPER LIGHTING SOLUTIONS  
 Product Line: Metalux  
 Catalog Number: **EHBR-60-L940-N**  
 Description: Elevate Round Highbay at, 60000 lumens, 4000K 90CRI LEDs with N lens

**Spectral Parameters**

CCT (K): 3963  
 CIE u': 0.2267  
 CIE v': 0.5003  
 Duv: -0.0016  
 CIE x: 0.3810  
 CIE y: 0.3738  
 CIE z: 0.2453  
 Peak Wavelength (nm): 630  
 Dominant Wavelength (nm): 580  
 Purity: 26.49712  
 Rf: 90.7  
 Rg: 101

CRI (Ra):	93.4		
R1:	95.2	R9:	66.4
R2:	95.1	R10:	86.6
R3:	93.3	R11:	94.4
R4:	94.5	R12:	75.4
R5:	94.2	R13:	95.0
R6:	92.9	R14:	95.4
R7:	94.0	R15:	92.8
R8:	87.7		



**Test Conditions**

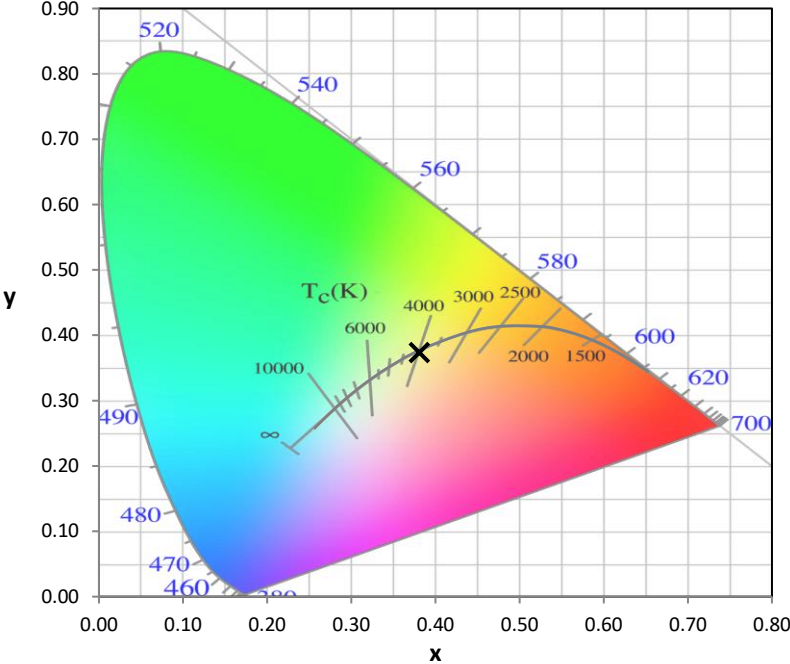
Stabilization Time: 44M  
 Operation Time: 1H 44M  
 Sphere Temperature (°C): 25.0

REPORT NUMBER: SP1-2506-472-7

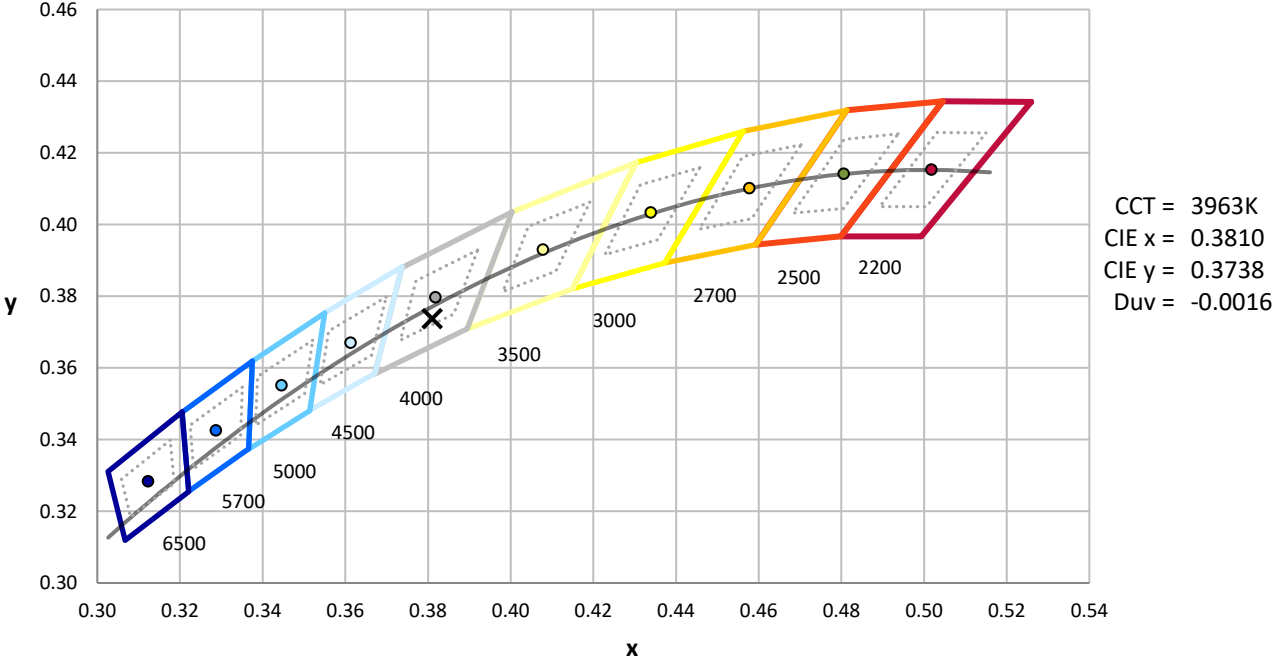
Measurement and Test Equipment			
Instrument	Identification Number	Calibration Date	Calibration Due Date
Photometer	76INCH SPHERE IN0058	6/16/2025	12/16/2025
Power Meter	XITRON INXT2011004	1/21/2025	1/21/2026
AC Power Source	CHROMA 61603 IN0063	10/22/2024	10/22/2025
DC Power Source	AGILENT E3634A IN0208	10/22/2024	10/22/2025
Sphere Thermometer	ONSET IN0085	10/22/2024	10/22/2025
Room Thermometer	ONSET IN0046	10/22/2024	10/22/2025

REPORT NUMBER: SP1-2506-472-7

CIE 1931 Chromaticity Diagram



CIE 1931 Chromaticity Diagram with 2017 ANSI 7-Step and 4-Step Quadrangles



Point lies inside the ANSI 4000K 4-step quadrangle

REPORT NUMBER: SP1-2506-472-7

**Photopic Flux vs. Wavelength**

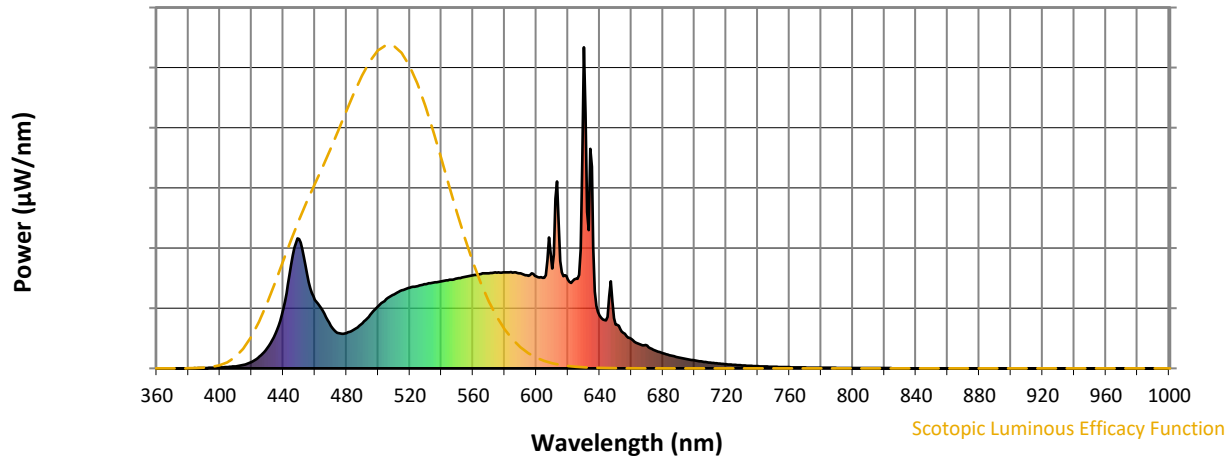


**Photopic Lumens: NR**

$\lambda$ (nm)	Power W <sup>^</sup> /nm	Lumens ( $\phi$ /nm)	$\lambda$ (nm)	Power W <sup>^</sup> /nm	Lumens ( $\phi$ /nm)	$\lambda$ (nm)	Power W <sup>^</sup> /nm	Lumens ( $\phi$ /nm)	$\lambda$ (nm)	Power W <sup>^</sup> /nm	Lumens ( $\phi$ /nm)	$\lambda$ (nm)	Power W <sup>^</sup> /nm	Lumens ( $\phi$ /nm)
360	0	NR	490	141	NR	620	276	NR	750	5	NR	880	0	NR
365	0	NR	495	167	NR	625	279	NR	755	4	NR	885	0	NR
370	0	NR	500	193	NR	630	1000	NR	760	4	NR	890	0	NR
375	0	NR	505	215	NR	635	628	NR	765	3	NR	895	0	NR
380	0	NR	510	230	NR	640	164	NR	770	3	NR	900	0	NR
385	0	NR	515	243	NR	645	161	NR	775	2	NR	905	0	NR
390	1	NR	520	251	NR	650	137	NR	780	2	NR	910	0	NR
395	2	NR	525	256	NR	655	111	NR	785	2	NR	915	0	NR
400	3	NR	530	262	NR	660	92	NR	790	1	NR	920	0	NR
405	4	NR	535	267	NR	665	76	NR	795	1	NR	925	0	NR
410	6	NR	540	271	NR	670	71	NR	800	1	NR	930	0	NR
415	11	NR	545	276	NR	675	56	NR	805	1	NR	935	0	NR
420	20	NR	550	280	NR	680	47	NR	810	1	NR	940	0	NR
425	37	NR	555	285	NR	685	40	NR	815	1	NR	945	0	NR
430	63	NR	560	290	NR	690	34	NR	820	1	NR	950	0	NR
435	108	NR	565	294	NR	695	29	NR	825	1	NR	955	0	NR
440	186	NR	570	296	NR	700	25	NR	830	0	NR	960	0	NR
445	323	NR	575	298	NR	705	21	NR	835	0	NR	965	0	NR
450	403	NR	580	299	NR	710	18	NR	840	0	NR	970	0	NR
455	293	NR	585	298	NR	715	15	NR	845	0	NR	975	0	NR
460	214	NR	590	296	NR	720	13	NR	850	0	NR	980	0	NR
465	180	NR	595	288	NR	725	11	NR	855	0	NR	985	0	NR
470	132	NR	600	286	NR	730	9	NR	860	0	NR	990	0	NR
475	109	NR	605	282	NR	735	8	NR	865	0	NR	995	0	NR
480	110	NR	610	311	NR	740	7	NR	870	0	NR	1000	0	NR
485	121	NR	615	334	NR	745	6	NR	875	0	NR			

REPORT NUMBER: SP1-2506-472-7

**Scotopic Flux vs. Wavelength**



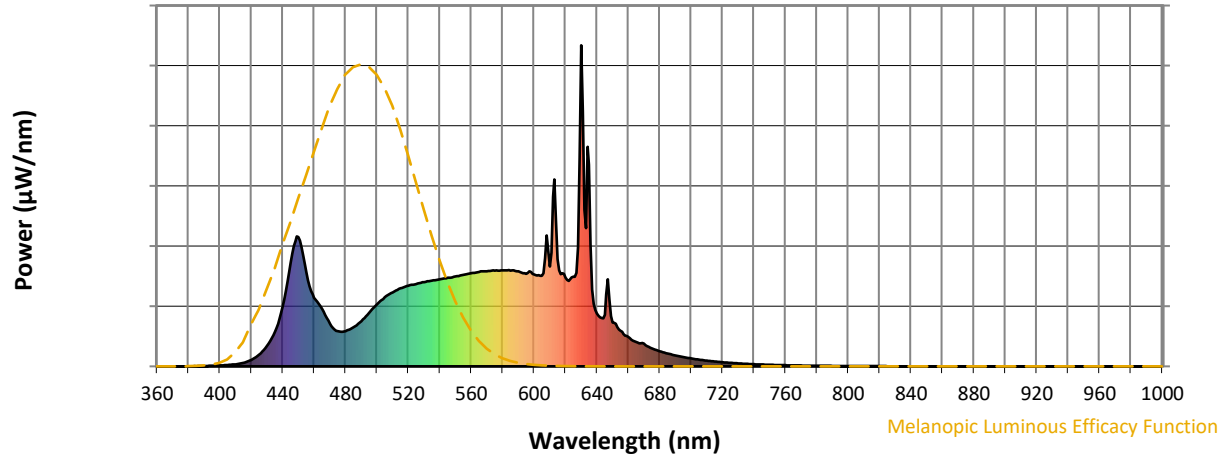
**Scotopic Lumens: NR**

**S/P: 1.76**

λ (nm)	Power W <sup>^</sup> /nm	Lumens (φ/nm)	λ (nm)	Power W <sup>^</sup> /nm	Lumens (φ/nm)	λ (nm)	Power W <sup>^</sup> /nm	Lumens (φ/nm)	λ (nm)	Power W <sup>^</sup> /nm	Lumens (φ/nm)	λ (nm)	Power W <sup>^</sup> /nm	Lumens (φ/nm)
360	0	NR	490	141	NR	620	276	NR	750	5	NR	880	0	NR
365	0	NR	495	167	NR	625	279	NR	755	4	NR	885	0	NR
370	0	NR	500	193	NR	630	1000	NR	760	4	NR	890	0	NR
375	0	NR	505	215	NR	635	628	NR	765	3	NR	895	0	NR
380	0	NR	510	230	NR	640	164	NR	770	3	NR	900	0	NR
385	0	NR	515	243	NR	645	161	NR	775	2	NR	905	0	NR
390	1	NR	520	251	NR	650	137	NR	780	2	NR	910	0	NR
395	2	NR	525	256	NR	655	111	NR	785	2	NR	915	0	NR
400	3	NR	530	262	NR	660	92	NR	790	1	NR	920	0	NR
405	4	NR	535	267	NR	665	76	NR	795	1	NR	925	0	NR
410	6	NR	540	271	NR	670	71	NR	800	1	NR	930	0	NR
415	11	NR	545	276	NR	675	56	NR	805	1	NR	935	0	NR
420	20	NR	550	280	NR	680	47	NR	810	1	NR	940	0	NR
425	37	NR	555	285	NR	685	40	NR	815	1	NR	945	0	NR
430	63	NR	560	290	NR	690	34	NR	820	1	NR	950	0	NR
435	108	NR	565	294	NR	695	29	NR	825	1	NR	955	0	NR
440	186	NR	570	296	NR	700	25	NR	830	0	NR	960	0	NR
445	323	NR	575	298	NR	705	21	NR	835	0	NR	965	0	NR
450	403	NR	580	299	NR	710	18	NR	840	0	NR	970	0	NR
455	293	NR	585	298	NR	715	15	NR	845	0	NR	975	0	NR
460	214	NR	590	296	NR	720	13	NR	850	0	NR	980	0	NR
465	180	NR	595	288	NR	725	11	NR	855	0	NR	985	0	NR
470	132	NR	600	286	NR	730	9	NR	860	0	NR	990	0	NR
475	109	NR	605	282	NR	735	8	NR	865	0	NR	995	0	NR
480	110	NR	610	311	NR	740	7	NR	870	0	NR	1000	0	NR
485	121	NR	615	334	NR	745	6	NR	875	0	NR			

REPORT NUMBER: SP1-2506-472-7

Melanopic Flux vs. Wavelength



Melanopic Lumens: NR

M/P: 3.64

λ (nm)	Power W <sup>^</sup> /nm	Lumens (φ/nm)	λ (nm)	Power W <sup>^</sup> /nm	Lumens (φ/nm)	λ (nm)	Power W <sup>^</sup> /nm	Lumens (φ/nm)	λ (nm)	Power W <sup>^</sup> /nm	Lumens (φ/nm)	λ (nm)	Power W <sup>^</sup> /nm	Lumens (φ/nm)
360	0	NR	490	141	NR	620	276	NR	750	5	NR	880	0	NR
365	0	NR	495	167	NR	625	279	NR	755	4	NR	885	0	NR
370	0	NR	500	193	NR	630	1000	NR	760	4	NR	890	0	NR
375	0	NR	505	215	NR	635	628	NR	765	3	NR	895	0	NR
380	0	NR	510	230	NR	640	164	NR	770	3	NR	900	0	NR
385	0	NR	515	243	NR	645	161	NR	775	2	NR	905	0	NR
390	1	NR	520	251	NR	650	137	NR	780	2	NR	910	0	NR
395	2	NR	525	256	NR	655	111	NR	785	2	NR	915	0	NR
400	3	NR	530	262	NR	660	92	NR	790	1	NR	920	0	NR
405	4	NR	535	267	NR	665	76	NR	795	1	NR	925	0	NR
410	6	NR	540	271	NR	670	71	NR	800	1	NR	930	0	NR
415	11	NR	545	276	NR	675	56	NR	805	1	NR	935	0	NR
420	20	NR	550	280	NR	680	47	NR	810	1	NR	940	0	NR
425	37	NR	555	285	NR	685	40	NR	815	1	NR	945	0	NR
430	63	NR	560	290	NR	690	34	NR	820	1	NR	950	0	NR
435	108	NR	565	294	NR	695	29	NR	825	1	NR	955	0	NR
440	186	NR	570	296	NR	700	25	NR	830	0	NR	960	0	NR
445	323	NR	575	298	NR	705	21	NR	835	0	NR	965	0	NR
450	403	NR	580	299	NR	710	18	NR	840	0	NR	970	0	NR
455	293	NR	585	298	NR	715	15	NR	845	0	NR	975	0	NR
460	214	NR	590	296	NR	720	13	NR	850	0	NR	980	0	NR
465	180	NR	595	288	NR	725	11	NR	855	0	NR	985	0	NR
470	132	NR	600	286	NR	730	9	NR	860	0	NR	990	0	NR
475	109	NR	605	282	NR	735	8	NR	865	0	NR	995	0	NR
480	110	NR	610	311	NR	740	7	NR	870	0	NR	1000	0	NR
485	121	NR	615	334	NR	745	6	NR	875	0	NR			

**Summary**

$R_f = 90.7$   
 $R_g = 101$   
 $CIE R_a = 93.4$   
 $R_9 = 66.4$



**Color Vector Graphics**

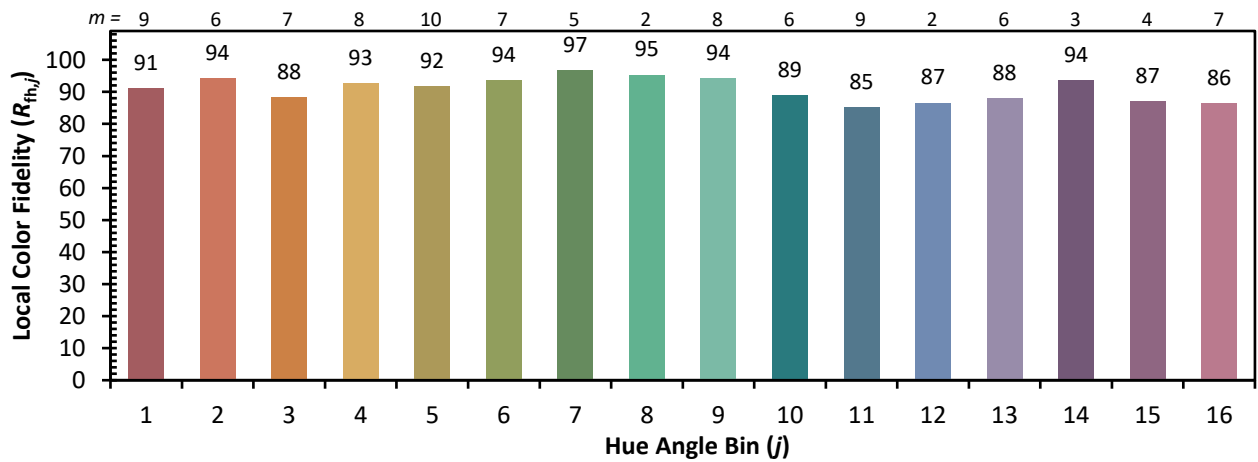
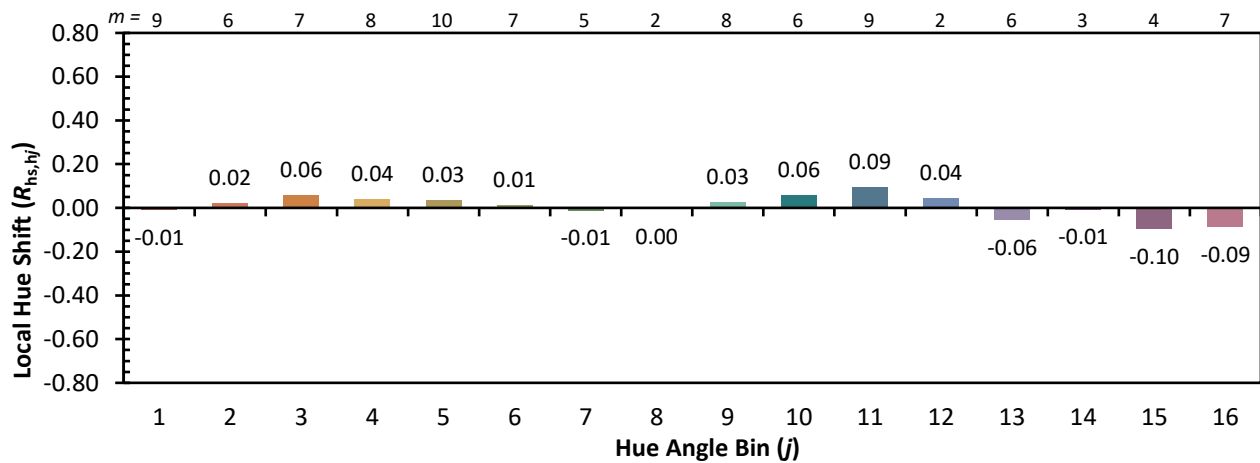
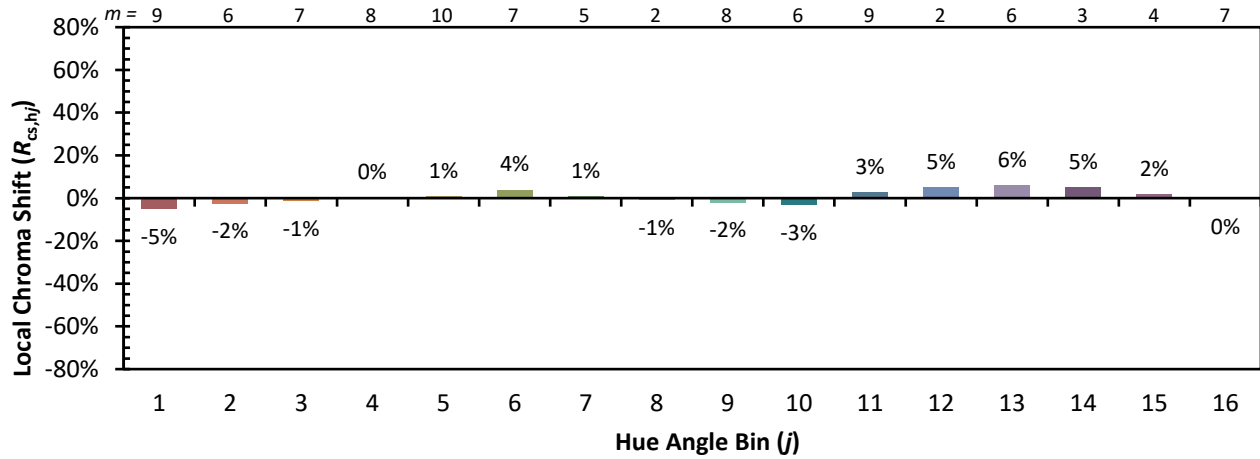


**Individual Sample Fidelity Index ( $R_{f,i}$ )**

CES01 = 86	CES26 = 90	CES51 = 99	CES76 = 83
CES02 = 62	CES27 = 93	CES52 = 97	CES77 = 87
CES03 = 31	CES28 = 94	CES53 = 95	CES78 = 79
CES04 = 69	CES29 = 91	CES54 = 96	CES79 = 94
CES05 = 49	CES30 = 98	CES55 = 95	CES80 = 91
CES06 = 50	CES31 = 92	CES56 = 95	CES81 = 80
CES07 = 42	CES32 = 84	CES57 = 94	CES82 = 96
CES08 = 41	CES33 = 95	CES58 = 95	CES83 = 95
CES09 = 29	CES34 = 90	CES59 = 98	CES84 = 93
CES10 = 74	CES35 = 94	CES60 = 93	CES85 = 82
CES11 = 57	CES36 = 84	CES61 = 93	CES86 = 84
CES12 = 63	CES37 = 92	CES62 = 90	CES87 = 90
CES13 = 43	CES38 = 93	CES63 = 92	CES88 = 97
CES14 = 74	CES39 = 98	CES64 = 91	CES89 = 84
CES15 = 71	CES40 = 96	CES65 = 88	CES90 = 99
CES16 = 47	CES41 = 98	CES66 = 88	CES91 = 74
CES17 = 49	CES42 = 89	CES67 = 87	CES92 = 78
CES18 = 56	CES43 = 89	CES68 = 87	CES93 = 87
CES19 = 71	CES44 = 99	CES69 = 88	CES94 = 75
CES20 = 66	CES45 = 93	CES70 = 84	CES95 = 83
CES21 = 85	CES46 = 95	CES71 = 80	CES96 = 91
CES22 = 78	CES47 = 92	CES72 = 93	CES97 = 93
CES23 = 91	CES48 = 96	CES73 = 78	CES98 = 93
CES24 = 90	CES49 = 93	CES74 = 92	CES99 = 94
CES25 = 71	CES50 = 99	CES75 = 81	



Color Rendition by Hue-Angle Bin



Measure Comparisons



(END OF REPORT)