

Cooper Lighting Solutions Photometric Lab
1121 Highway 74 South
Peachtree City, GA 30269



Scaled data based on original data using
LM-79-2019 Approved Method: Electrical and Photometric Measurements of Solid-
State Lighting Products

Test Report Prepared for
Cooper Lighting Solutions

Brand: METALUX

Report Number: P1444805

Luminaire Tested: EHBR1-24-UNV-TA-L940-UPL24

Issue Date: 5/1/2026

Test Information

Test Method: LM-79-2019
Report Number: P1444805
REPORT IS A COMBINATION OF REPORTS P1444329 AND P1431635
Test Lab: INNOVATION CENTER
Issue Date: 5/1/2026
Manufacturer: COOPER LIGHTING SOLUTIONS
Product Line: METALUX
Catalog Number: EHBR1-24-UNV-TA-L940-UPL24
Description: Elevate Round Highbay at, 24000 lumens, 4000K 90CRI LEDs with TA lens
Light Source: -
Ballast/Driver: -

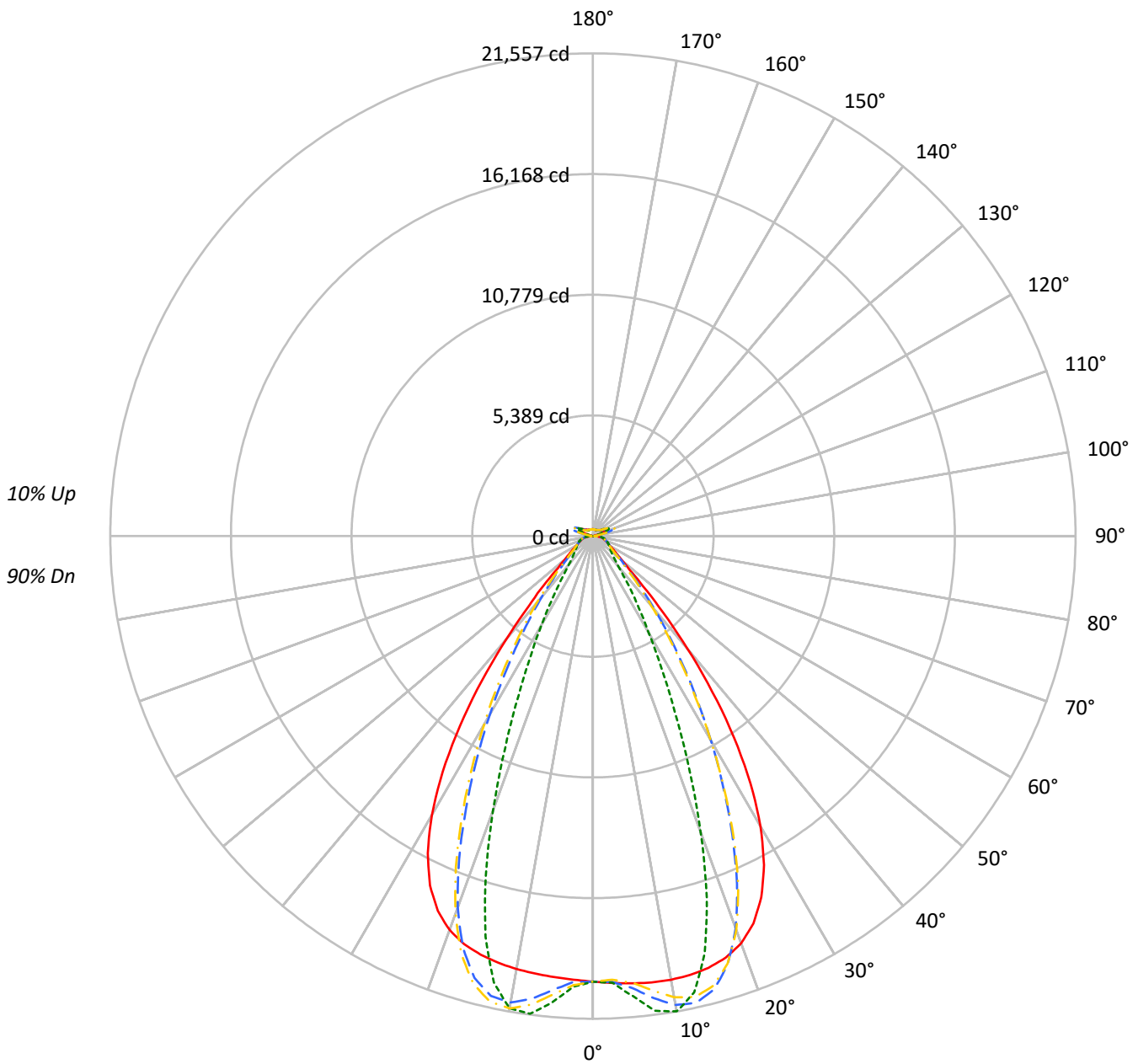
Summary

Lumens per Lamp: N/A
Luminaire Lumens: 25304.4 lumens
Efficiency: N/A
Efficacy: 174.8 lumens/watt
Spacing Criteria (0/90/45): 1.13 / 0.77 / 0.88
Luminous Opening: Vertical Cylinder (Dia: 1.71' x H: 0.1')
CIE Type: Direct

Input Watts (W): 144.8
Input Voltage (V): NR
Input Current (Ain): NR
Voltage Rise (V): NR
Power Factor: NR
Total Harmonic Distortion (THDi): NR
Frequency (hertz): 60
Stabilization Time: NR
Operation Time: NR
Ambient Temperature (°C): NR
Test Distance: 24 FT

TEST NUMBER: P1444805
CATALOG NUMBER: EHBR1-24-UNV-TA-L940-UPL24

Luminous Intensity Polar Plot



— 0°-180° - - 45°-225° - · - · 90°-270° - · - · 135°-315°



TEST NUMBER: P1444805
 CATALOG NUMBER: EHBR1-24-UNV-TA-L940-UPL24

COEFFICIENT OF UTILIZATION - ZONAL CAVITY METHOD:

RF	20				20				20				20				20				
RC	80				70				50				30				10			0	
RW	70	50	30	10	70	50	30	10	50	30	10	50	30	10	50	30	10	50	30	10	0
RCR																					
0	117	117	117	117	113	113	113	113	106	106	106	99	99	99	93	93	93	93	93	93	90
1	110	106	103	100	106	103	100	98	97	95	93	92	90	88	87	86	84	84	84	84	82
2	103	97	92	88	100	94	90	86	89	86	83	85	82	79	81	78	76	76	76	76	74
3	96	89	83	78	93	87	81	77	83	78	74	79	75	72	75	72	70	70	70	70	68
4	91	82	75	70	88	80	74	69	76	71	68	73	69	66	70	67	64	64	64	64	62
5	85	76	69	64	83	74	68	63	71	66	62	68	64	60	66	62	59	59	59	59	57
6	80	70	63	59	78	69	63	58	66	61	57	64	59	56	62	58	55	55	55	55	53
7	76	65	59	54	74	64	58	53	62	57	52	60	55	52	58	54	51	51	51	51	49
8	72	61	54	50	70	60	54	50	58	53	49	56	52	48	55	50	47	47	47	47	46
9	68	57	51	46	66	56	50	46	55	49	45	53	48	45	52	47	44	44	44	44	43
10	65	54	48	43	63	53	47	43	52	46	42	50	45	42	49	45	41	41	41	41	40

AVERAGE LUMINANCE (cd/sqm):

	0°	90°	180°	270°
0°	93446	93446	93446	93446
5°	93898	96636	92584	97902
10°	94682	101461	92412	100790
15°	95147	91973	92250	88270
20°	94163	68517	91081	63394
25°	89129	43333	86184	39317
30°	77861	26040	74845	23798
35°	59922	16340	56475	14475
40°	37906	10250	34681	9632
45°	19538	7985	19214	7854
50°	11454	7102	11103	6992
55°	8775	6720	8451	6660
60°	7425	6865	7110	6775
65°	6975	7168	6706	6924
70°	6813	7507	6473	7224
75°	7285	7961	6892	7609
80°	7539	8814	6836	8046
85°	7099	8507	5738	7283

MAXIMUM LUMINANCE 45°-90°:

Horizontal Angle: 25°
 Vertical Angle: 45°
 Luminance: 29900 cd/sqm



TEST NUMBER: P1444805
 CATALOG NUMBER: EHBR1-24-UNV-TA-L940-UPL24

ZONAL LUMENS:

Zone	Lumens	% Fixture
0°-10°	1961.1	7.7
10°-20°	5516.6	21.8
20°-30°	6283.0	24.8
30°-40°	4516.0	17.8
40°-50°	2082.8	8.2
50°-60°	996.7	3.9
60°-70°	727.2	2.9
70°-80°	552.5	2.2
80°-90°	255.3	1.0
90°-100°	67.8	0.3
100°-110°	401.0	1.6
110°-120°	741.0	2.9
120°-130°	450.4	1.8
130°-140°	285.7	1.1
140°-150°	208.9	0.8
150°-160°	143.6	0.6
160°-170°	85.6	0.3
170°-180°	29.1	0.1
0°-30°	13760.7	54.4
0°-40°	18276.7	72.2
0°-60°	21356.1	84.4
0°-90°	22891.2	90.5
90°-120°	1209.8	4.8
90°-150°	2154.9	8.5
90°-180°	2413.0	9.5
0°-180°	25304.4	100.0

CANDELA DISTRIBUTION:

	0°	90°	180°	270°	360°	Flux
0°	19899	19899	19899	19899	19899	
5°	20049	20633	19768	20904	20049	1916
15°	19961	19296	19354	18519	19961	5624
25°	17799	8654	17211	7852	17799	8069
35°	10998	2999	10365	2657	10998	6750
45°	3161	1292	3109	1271	3161	2689
55°	1186	908	1142	900	1186	1095
65°	728	748	700	723	728	727
75°	513	561	486	536	513	534
85°	244	292	197	250	244	229
90°	72	89	25	29	72	44
95°	31	35	31	35	31	30
105°	143	186	96	186	143	190
115°	645	785	676	785	645	595
125°	481	508	545	509	481	438
135°	373	334	402	336	373	291
145°	327	320	348	323	327	206
155°	302	304	322	307	302	140
165°	298	298	309	300	298	85
175°	303	306	309	307	303	29
180°	307	307	307	307	307	



TEST NUMBER: P1444805
 CATALOG NUMBER: EHBR1-24-UNV-TA-L940-UPL24

CANDELA DISTRIBUTION (FULL):

	0°	2.5°	5°	7.5°	10°	12.5°	15°	17.5°	20°	22.5°	25°
0°	19898.6	19898.6	19898.6	19898.6	19898.6	19898.6	19898.6	19898.6	19898.6	19898.6	19898.6
2.5°	19974.7	19973.1	19972.7	19971.3	19970.9	19970.9	19970.3	19968.7	19967.7	19965.4	19962.7
5°	20048.7	20047.9	20048.5	20048.5	20047.1	20044.1	20039.2	20033.2	20025.7	20018.6	20012.3
7.5°	20106.1	20107.5	20109.3	20108.9	20104.5	20097.3	20087.3	20081.7	20085.0	20095.8	20120.6
10°	20116.6	20125.1	20128.4	20127.4	20118.7	20112.5	20114.9	20135.9	20178.0	20233.9	20310.4
12.5°	20075.8	20086.3	20085.9	20082.4	20074.0	20082.6	20113.1	20175.8	20265.8	20376.2	20505.7
15°	19961.3	19974.9	19970.9	19966.5	19960.9	19988.9	20049.9	20158.9	20297.9	20453.5	20612.9
17.5°	19738.9	19755.3	19747.3	19742.2	19737.5	19790.1	19894.9	20054.5	20229.6	20405.6	20556.7
20°	19353.2	19364.2	19345.2	19336.3	19343.9	19447.0	19601.4	19805.2	19989.7	20156.2	20259.4
22.5°	18723.7	18737.4	18701.8	18697.7	18741.6	18900.1	19095.4	19323.3	19496.5	19628.6	19668.3
25°	17799.0	17812.4	17770.1	17795.4	17870.2	18086.0	18318.6	18562.3	18710.2	18808.0	18781.0
27.5°	16550.8	16563.0	16522.8	16574.5	16692.7	16976.4	17250.1	17514.5	17646.3	17714.8	17627.9
30°	14976.5	15001.9	14954.5	15026.5	15207.0	15575.3	15888.8	16185.3	16316.7	16368.9	16233.8
32.5°	13106.7	13142.9	13090.6	13197.9	13449.6	13892.0	14248.2	14579.5	14724.8	14784.4	14631.8
35°	10997.9	11049.8	10989.8	11150.7	11461.3	11953.9	12348.4	12718.2	12890.3	12974.7	12820.9
37.5°	8763.6	8813.1	8780.7	8995.3	9336.3	9846.8	10249.6	10648.6	10843.0	10969.6	10848.4
40°	6570.1	6615.3	6639.9	6885.4	7206.2	7687.4	8074.2	8468.9	8686.4	8845.3	8770.5
42.5°	4637.2	4682.8	4766.3	5003.2	5270.7	5669.0	6000.4	6354.8	6562.5	6732.1	6703.2
45°	3161.1	3214.1	3318.7	3512.6	3706.1	3991.8	4235.2	4510.7	4680.5	4835.8	4837.7
47.5°	2215.2	2252.3	2345.8	2478.3	2604.3	2962.1	2976.8	3112.3	3226.4	3342.5	3357.5
50°	1707.1	1729.6	1779.2	1852.9	1924.4	2017.3	2102.3	2200.5	2270.7	2334.3	2349.5
52.5°	1403.2	1417.4	1442.7	1482.6	1524.1	1574.6	1620.0	1674.0	1712.2	1746.3	1753.4
55°	1185.9	1197.7	1235.3	1242.8	1290.2	1299.5	1319.6	1352.5	1374.6	1395.0	1400.2
57.5°	1022.0	1030.5	1038.5	1055.6	1070.2	1091.4	1108.5	1132.0	1146.0	1160.7	1162.0
60°	892.6	898.9	904.5	916.3	926.2	941.0	952.8	968.8	978.9	989.9	991.2
62.5°	796.4	800.8	804.6	812.4	819.5	830.8	840.2	853.6	862.9	871.5	873.4
65°	728.0	731.2	733.7	739.5	745.7	755.4	763.9	774.8	781.7	788.2	789.6
67.5°	667.3	670.4	672.9	678.3	682.6	689.8	695.5	703.7	708.9	714.1	714.2
70°	597.8	600.7	602.7	607.7	611.2	617.3	621.9	629.3	634.5	640.4	641.9
72.5°	549.8	551.4	554.0	558.6	563.5	570.1	576.2	583.9	590.3	596.3	598.9
75°	513.2	515.2	516.9	520.8	524.1	529.7	534.3	541.3	546.9	553.4	556.6
77.5°	460.4	462.7	464.1	468.1	470.9	476.4	479.7	485.9	490.6	496.5	499.4
80°	396.6	398.7	399.8	403.5	405.7	410.7	414.0	420.1	423.9	429.8	433.3
82.5°	325.9	327.9	328.5	332.0	333.2	337.3	339.8	345.9	350.7	358.3	363.6
85°	244.0	244.7	246.0	245.0	250.0	250.3	255.9	256.9	264.3	266.3	274.6
87.5°	149.2	151.4	152.5	155.9	157.4	160.8	161.8	165.5	167.4	171.5	173.5
90°	71.6	75.6	77.3	81.9	83.6	87.7	89.1	93.7	95.4	100.2	102.9
92.5°	27.3	29.2	30.8	32.9	34.7	37.0	38.9	41.0	42.9	45.1	48.7
95°	31.0	33.2	35.2	37.4	39.4	41.6	43.6	45.7	47.8	49.9	56.1
97.5°	39.0	40.9	42.7	44.5	46.3	48.2	49.9	51.8	53.6	55.3	62.6
100°	51.0	52.5	54.0	55.6	57.1	58.7	60.2	61.8	63.3	64.8	78.4
102.5°	84.4	89.9	95.3	100.8	106.3	111.7	117.2	122.7	128.1	133.6	162.2
105°	143.4	158.1	173.0	187.8	202.6	217.4	232.3	247.0	261.8	276.6	323.4
107.5°	245.2	272.6	300.1	327.5	355.0	382.3	409.7	437.0	464.4	491.7	539.1
110°	453.4	475.3	497.4	519.5	541.6	563.6	585.6	607.5	629.6	651.6	686.2



TEST NUMBER: P1444805
 CATALOG NUMBER: EHBR1-24-UNV-TA-L940-UPL24

CANDELA DISTRIBUTION (continued):

	0°	2.5°	5°	7.5°	10°	12.5°	15°	17.5°	20°	22.5°	25°
112.5°	611.4	621.4	631.4	641.3	651.3	661.3	671.3	681.2	691.2	701.0	725.8
115°	645.2	648.7	652.2	655.6	659.2	662.6	666.1	669.5	673.0	676.3	693.1
117.5°	626.4	625.8	625.2	624.7	623.9	623.4	622.6	622.0	621.2	620.6	630.0
120°	584.0	581.0	578.1	574.9	571.8	568.6	565.6	562.4	559.3	556.0	560.2
122.5°	530.5	526.8	523.4	519.6	515.9	512.1	508.5	504.5	500.9	497.0	498.6
125°	481.2	477.5	473.9	470.1	466.3	462.5	458.6	454.7	451.0	447.0	447.9
127.5°	438.2	435.6	433.1	430.3	427.7	424.8	422.1	419.2	416.6	413.7	413.9
130°	410.5	408.2	405.9	403.4	401.0	398.4	395.9	393.2	390.7	388.0	388.5
132.5°	387.8	386.3	384.7	382.8	381.1	379.1	377.3	375.2	373.4	371.4	371.9
135°	372.8	371.2	369.8	368.2	366.5	364.6	362.9	361.0	359.2	357.3	358.0
137.5°	360.0	358.7	357.3	355.8	354.2	352.4	350.9	349.1	347.4	345.6	346.2
140°	348.3	347.1	345.8	344.4	343.0	341.5	340.0	338.4	336.9	335.2	336.0
142.5°	335.3	334.3	333.3	332.2	331.1	329.7	328.5	327.1	325.9	324.6	325.6
145°	326.7	325.9	325.1	324.1	323.2	322.0	321.0	319.7	318.8	317.6	318.8
147.5°	319.3	318.6	318.0	317.2	316.5	315.5	314.6	313.6	312.8	311.8	312.9
150°	312.7	312.1	311.5	310.8	310.1	309.1	308.3	307.4	306.5	305.6	306.8
152.5°	305.9	305.2	304.6	304.0	303.3	302.3	301.7	300.7	299.9	299.1	300.0
155°	301.8	301.1	300.5	299.8	299.2	298.3	297.6	296.7	296.0	295.1	296.0
157.5°	299.2	298.6	298.2	297.6	297.2	296.4	295.9	295.2	294.7	294.0	294.6
160°	298.1	297.7	297.2	296.6	296.0	295.4	294.9	294.2	293.7	293.1	293.6
162.5°	297.3	296.7	296.3	295.6	295.1	294.4	293.9	293.4	292.9	292.3	292.9
165°	297.6	297.2	296.8	296.5	296.2	295.8	295.4	295.0	294.6	294.1	294.5
167.5°	300.3	299.7	299.4	298.9	298.4	297.8	297.5	296.9	296.5	295.9	296.4
170°	301.2	300.8	300.5	300.4	300.1	299.8	299.5	299.2	299.0	298.7	299.0
172.5°	302.8	302.5	302.3	302.2	301.9	301.8	301.6	301.3	301.2	300.8	301.4
175°	302.9	302.6	302.5	302.4	302.2	302.1	302.0	301.9	301.9	301.7	301.9
177.5°	304.8	304.7	304.7	304.7	304.7	304.6	304.6	304.4	304.4	304.4	304.6
180°	306.7	306.7	306.7	306.7	306.7	306.7	306.7	306.7	306.7	306.7	306.7



TEST NUMBER: P1444805
 CATALOG NUMBER: EHBR1-24-UNV-TA-L940-UPL24

CANDELA DISTRIBUTION (continued):

	27.5°	30°	32.5°	35°	37.5°	40°	42.5°	45°	47.5°	50°	52.5°
0°	19898.6	19898.6	19898.6	19898.6	19898.6	19898.6	19898.6	19898.6	19898.6	19898.6	19898.6
2.5°	19960.9	19958.5	19955.1	19950.9	19947.3	19943.1	19933.1	19930.2	19933.5	19935.7	19940.3
5°	20008.3	20009.7	20010.2	20019.3	20027.1	20046.7	20199.8	20260.6	20307.6	20337.5	20382.8
7.5°	20151.3	20197.3	20242.8	20304.0	20356.8	20428.1	20695.9	20810.0	20891.0	20949.3	21021.0
10°	20393.6	20494.1	20588.2	20698.6	20793.4	20902.0	21151.3	21262.4	21332.5	21383.6	21431.2
12.5°	20637.7	20777.0	20902.9	21025.7	21128.3	21222.5	21310.2	21349.1	21352.4	21354.1	21328.7
15°	20764.9	20898.0	21009.0	21090.1	21150.5	21177.1	21026.2	20947.0	20847.0	20764.5	20628.9
17.5°	20684.6	20764.5	20812.4	20807.7	20782.8	20699.3	20271.7	20036.5	19803.1	19592.7	19316.7
20°	20327.9	20321.8	20280.2	20162.0	20019.8	19798.6	19065.5	18642.6	18233.6	17874.5	17438.8
22.5°	19664.2	19559.8	19414.3	19159.7	18876.9	18490.4	17439.8	16817.7	16248.5	15745.6	15182.2
25°	18702.7	18487.9	18219.4	17815.2	17375.7	16811.9	15517.2	14743.4	14059.8	13467.1	12817.1
27.5°	17472.1	17148.4	16755.0	16195.5	15600.1	14877.9	13442.4	12588.5	11854.8	11219.2	10527.4
30°	16015.1	15594.3	15086.1	14391.9	13673.7	12854.6	11398.7	10533.7	9791.0	9137.2	8444.9
32.5°	14368.7	13875.7	13280.3	12501.1	11724.4	10882.2	9476.1	8638.9	7929.4	7300.5	6673.8
35°	12552.7	12024.1	11394.1	10599.4	9827.4	9008.5	7718.4	6963.5	6337.0	5781.0	5275.1
37.5°	10604.7	10085.7	9487.0	8738.0	8022.0	7280.1	6166.8	5534.3	5008.5	4547.1	4156.4
40°	8579.4	8125.3	7607.2	6959.6	6348.6	5730.7	4816.9	4314.7	3899.9	3548.0	3255.2
42.5°	6578.9	6226.9	5829.7	5317.9	4850.4	4379.9	3676.6	3304.5	2997.2	2743.9	2536.9
45°	4773.3	4537.8	4271.3	3915.6	3592.1	3263.9	2763.3	2501.8	2301.7	2138.3	2000.2
47.5°	3336.8	3200.2	3191.8	2863.0	2625.8	2425.2	2102.6	1937.5	1814.9	1715.9	1628.5
50°	2343.3	2277.2	2195.1	2077.8	1967.7	1854.3	1657.9	1558.0	1486.2	1426.2	1370.9
52.5°	1751.8	1717.5	1673.8	1611.5	1551.8	1488.0	1363.7	1300.1	1277.6	1221.8	1178.0
55°	1399.2	1379.5	1354.6	1318.1	1281.8	1267.2	1160.7	1113.5	1083.6	1061.6	1038.0
57.5°	1162.2	1147.6	1132.8	1108.0	1087.0	1061.6	1005.1	980.8	963.0	950.1	933.8
60°	991.4	982.6	974.3	959.8	948.4	934.7	898.9	885.2	875.9	868.1	857.7
62.5°	875.0	870.5	866.2	858.5	852.7	845.3	820.7	814.2	809.5	805.6	799.3
65°	791.0	787.8	785.4	780.3	777.4	773.0	751.9	747.5	744.7	743.2	739.5
67.5°	714.7	711.3	709.7	706.1	704.9	702.2	684.9	682.4	681.5	682.0	680.6
70°	643.3	641.9	642.6	642.0	643.7	644.1	633.7	633.6	634.7	637.0	637.2
72.5°	600.5	600.5	601.3	601.7	603.2	604.0	595.3	594.9	595.3	597.0	597.1
75°	559.8	560.5	562.7	563.5	565.2	565.6	554.1	552.8	552.8	554.4	554.0
77.5°	503.5	505.9	510.1	512.3	515.9	516.5	503.6	502.1	502.2	503.6	502.3
80°	439.6	444.2	450.9	455.6	461.0	463.2	449.9	446.7	443.8	443.4	440.7
82.5°	371.6	377.3	385.3	389.5	395.4	396.7	374.5	370.2	367.8	368.0	365.6
85°	283.7	288.0	295.2	297.7	301.3	300.9	275.6	264.8	267.7	263.1	266.6
87.5°	177.9	180.5	185.0	185.6	187.4	187.0	161.5	156.4	154.9	155.0	153.2
90°	108.4	111.4	116.7	118.2	122.1	123.2	103.9	102.9	99.9	99.7	96.0
92.5°	52.7	56.4	60.2	63.9	67.7	71.6	72.9	76.0	72.3	68.2	64.7
95°	62.2	68.4	74.5	80.8	86.9	93.1	99.2	105.4	99.6	93.8	88.0
97.5°	69.9	77.1	84.4	91.8	99.0	106.3	113.6	120.8	114.7	108.4	102.2
100°	91.9	105.5	119.0	132.5	146.0	159.6	173.1	186.7	174.8	162.9	150.9
102.5°	191.0	219.8	248.5	277.4	306.0	334.8	363.8	392.6	365.2	337.7	310.3
105°	370.0	416.6	463.2	509.8	556.4	603.1	649.9	696.6	652.8	609.1	565.4
107.5°	586.4	633.7	680.9	728.2	775.5	822.8	870.4	917.8	875.2	832.4	789.8
110°	720.7	755.2	789.8	824.2	858.8	893.3	928.3	962.9	937.2	911.6	885.9



TEST NUMBER: P1444805
 CATALOG NUMBER: EHBR1-24-UNV-TA-L940-UPL24

CANDELA DISTRIBUTION (continued):

	27.5°	30°	32.5°	35°	37.5°	40°	42.5°	45°	47.5°	50°	52.5°
112.5°	750.4	775.1	799.8	824.5	849.0	873.7	899.1	923.9	911.1	898.1	885.2
115°	709.7	726.4	743.0	759.7	776.3	792.8	810.3	827.2	823.0	818.9	814.8
117.5°	639.2	648.5	657.8	667.2	676.3	685.7	695.9	705.4	706.1	706.8	707.6
120°	564.0	568.0	571.8	575.9	579.7	583.6	588.7	592.9	596.3	599.8	603.2
122.5°	500.1	501.6	503.1	504.6	506.0	507.5	510.4	512.2	514.5	517.0	519.4
125°	448.6	449.4	450.1	450.8	451.4	452.2	454.5	455.6	455.9	455.9	456.1
127.5°	414.0	414.2	414.3	414.5	414.4	414.7	416.4	417.0	415.6	414.1	412.6
130°	388.8	389.2	389.5	390.0	390.3	390.7	392.9	393.8	391.2	388.6	386.0
132.5°	372.4	372.8	373.3	373.9	374.3	374.8	377.3	378.2	375.5	372.3	369.3
135°	358.5	359.2	359.8	360.4	360.9	361.8	364.5	365.7	362.9	359.9	357.1
137.5°	346.8	347.4	348.1	348.7	349.4	350.0	353.2	354.3	352.1	349.6	347.5
140°	336.7	337.4	338.3	339.1	339.9	340.8	344.1	345.5	343.9	342.0	340.2
142.5°	326.5	327.8	328.9	330.2	331.2	332.5	336.3	338.1	336.8	335.4	334.1
145°	319.9	321.3	322.5	323.9	325.1	326.6	330.9	333.1	332.3	331.3	330.5
147.5°	313.9	315.1	316.3	317.5	318.7	320.2	324.7	326.6	326.2	325.6	325.1
150°	307.8	309.0	310.2	311.5	312.9	314.3	319.3	321.5	321.1	320.6	320.1
152.5°	301.1	302.1	303.3	304.4	305.6	306.9	312.8	315.0	314.6	314.1	313.8
155°	296.7	297.7	298.4	299.4	300.3	301.4	307.4	309.7	309.5	309.2	308.9
157.5°	295.1	295.7	296.2	296.9	297.6	298.3	304.6	306.7	306.4	306.2	306.0
160°	294.0	294.5	294.9	295.4	295.9	296.4	302.9	304.8	304.6	304.4	304.1
162.5°	293.4	294.2	294.7	295.3	295.9	296.7	303.2	305.5	304.9	304.6	304.3
165°	294.9	295.1	295.5	296.0	296.4	296.7	302.8	304.6	304.5	304.2	303.9
167.5°	296.6	297.2	297.5	298.0	298.3	299.0	304.6	306.3	306.1	305.9	305.8
170°	299.2	299.7	299.9	300.4	300.7	301.2	306.0	307.3	307.3	306.7	306.5
172.5°	301.7	302.2	302.6	303.0	303.4	303.9	307.9	309.3	309.1	308.8	308.5
175°	302.2	302.5	302.9	303.3	303.6	304.0	307.2	308.1	308.0	307.9	307.7
177.5°	304.8	305.0	305.3	305.6	305.9	306.1	308.1	308.7	308.7	308.7	308.6
180°	306.7	306.7	306.7	306.7	306.7	306.7	306.7	306.7	306.7	306.7	306.7



TEST NUMBER: P1444805
 CATALOG NUMBER: EHBR1-24-UNV-TA-L940-UPL24

CANDELA DISTRIBUTION (continued):

	55°	57.5°	60°	62.5°	65°	67.5°	70°	72.5°	75°	77.5°	80°
0°	19898.6	19898.6	19898.6	19898.6	19898.6	19898.6	19898.6	19898.6	19898.6	19898.6	19898.6
2.5°	19941.3	19948.3	19949.3	19957.5	19956.9	19966.7	19965.1	19973.1	19968.4	19974.9	19969.5
5°	20409.7	20452.1	20474.4	20515.9	20528.9	20566.1	20576.5	20610.3	20611.7	20638.6	20632.5
7.5°	21071.9	21134.5	21171.6	21222.9	21248.9	21291.5	21310.4	21342.0	21352.1	21377.2	21379.1
10°	21467.3	21497.7	21518.9	21533.2	21546.3	21552.4	21559.6	21557.6	21559.6	21556.8	21562.8
12.5°	21311.8	21267.3	21238.0	21182.5	21150.2	21088.7	21058.5	20999.5	20978.0	20927.3	20920.0
15°	20524.1	20369.3	20260.0	20101.1	20001.1	19844.7	19753.2	19612.2	19547.7	19435.5	19406.1
17.5°	19088.4	18801.2	18579.0	18293.8	18096.0	17829.6	17662.0	17441.4	17320.6	17142.7	17081.2
20°	17075.6	16650.6	16317.3	15920.1	15635.9	15281.8	15055.1	14769.2	14603.2	14384.7	14296.2
22.5°	14712.5	14183.5	13767.1	13297.9	12955.0	12560.4	12288.8	11979.4	11798.8	11561.5	11456.4
25°	12276.9	11693.5	11230.6	10736.3	10374.0	9978.4	9706.7	9402.8	9215.9	8990.6	8886.2
27.5°	9947.5	9356.9	8909.5	8449.9	8117.6	7760.7	7515.5	7250.2	7084.3	6892.0	6793.7
30°	7891.8	7370.9	6990.2	6608.8	6332.3	6042.5	5838.7	5618.8	5473.3	5308.6	5215.1
32.5°	6217.0	5814.9	5516.7	5214.1	4987.8	4745.6	4569.5	4375.6	4244.2	4097.2	4012.4
35°	4923.7	4611.3	4373.5	4124.4	3930.1	3723.7	3568.6	3401.2	3283.3	3156.7	3083.5
37.5°	3890.3	3641.8	3446.2	3239.2	3079.6	2908.6	2851.0	2658.8	2536.8	2435.7	2365.7
40°	3053.1	2855.6	2693.7	2535.4	2405.1	2275.5	2171.5	2068.8	1990.0	1917.7	1867.7
42.5°	2384.3	2241.1	2122.8	2007.0	1911.9	1817.5	1742.1	1671.4	1618.3	1571.0	1538.8
45°	1895.3	1797.0	1714.8	1633.1	1566.1	1503.0	1452.2	1407.2	1372.9	1344.5	1324.3
47.5°	1557.1	1489.7	1431.8	1376.6	1331.1	1289.9	1255.9	1244.8	1207.9	1183.0	1173.6
50°	1323.3	1282.6	1238.5	1197.9	1167.5	1137.4	1115.3	1093.7	1079.9	1068.4	1065.0
52.5°	1148.8	1117.7	1093.2	1067.5	1047.4	1025.9	1010.7	996.3	988.8	982.8	982.0
55°	1019.1	997.3	981.1	963.9	951.9	939.2	931.4	923.7	920.5	917.4	917.7
57.5°	920.9	906.4	895.9	884.7	878.2	872.1	870.2	868.2	869.2	869.7	871.4
60°	849.4	840.0	833.4	826.9	824.2	822.3	823.8	825.4	828.9	831.7	834.2
62.5°	794.6	789.2	786.0	782.5	782.2	782.4	785.3	788.2	792.6	795.8	798.2
65°	738.2	735.1	734.0	731.9	732.9	733.7	737.2	739.4	743.7	746.3	749.4
67.5°	681.2	680.5	681.1	681.1	683.1	684.9	688.2	690.7	694.4	696.8	699.3
70°	639.1	639.4	641.0	641.3	643.4	644.5	647.5	649.1	652.4	654.4	657.5
72.5°	598.1	597.5	597.8	596.9	597.7	597.4	599.0	599.8	602.6	604.2	607.8
75°	554.6	552.7	552.3	550.3	550.4	548.9	549.7	549.6	551.4	552.2	554.8
77.5°	501.9	498.8	497.3	494.1	494.0	492.7	494.1	494.8	498.1	499.6	502.6
80°	438.9	434.1	431.8	428.0	428.7	428.5	431.7	434.1	438.2	438.9	442.7
82.5°	364.8	359.9	357.6	353.7	354.7	354.7	357.7	358.2	361.7	363.2	367.5
85°	261.2	263.1	257.9	258.3	257.1	259.2	261.2	263.7	266.6	271.4	275.1
87.5°	153.8	153.2	155.0	155.2	157.9	159.3	163.6	166.0	170.8	174.6	181.3
90°	94.9	91.2	91.5	89.4	90.8	88.8	90.2	88.0	90.0	89.3	92.0
92.5°	60.4	56.6	52.5	48.7	44.6	41.1	38.9	37.4	35.3	33.8	31.7
95°	82.4	76.6	70.9	65.1	59.4	53.7	51.5	49.5	47.3	45.3	43.1
97.5°	96.1	89.8	83.7	77.4	71.3	65.1	63.7	62.3	60.9	59.5	58.1
100°	138.9	127.1	115.2	103.1	91.3	79.4	78.3	77.1	76.0	74.9	73.8
102.5°	283.0	255.8	228.5	201.1	173.8	146.5	141.7	137.0	132.2	127.4	122.7
105°	521.6	477.8	434.1	390.5	346.9	303.1	290.0	276.9	263.8	250.8	237.8
107.5°	747.1	704.5	661.8	619.3	576.6	534.0	513.4	492.8	472.2	451.6	431.0
110°	860.2	834.6	809.1	783.3	757.9	732.4	712.6	693.0	673.3	653.6	634.0



TEST NUMBER: P1444805
 CATALOG NUMBER: EHBR1-24-UNV-TA-L940-UPL24

CANDELA DISTRIBUTION (continued):

	55°	57.5°	60°	62.5°	65°	67.5°	70°	72.5°	75°	77.5°	80°
112.5°	872.4	859.6	846.8	833.9	821.2	808.4	798.8	789.2	779.7	770.1	760.3
115°	810.7	806.6	802.5	798.5	794.6	790.5	789.8	789.1	788.4	787.7	787.1
117.5°	708.3	709.1	709.7	710.6	711.4	712.1	717.3	722.3	727.4	732.7	738.0
120°	606.7	610.2	613.6	617.1	620.7	624.2	631.0	637.8	644.7	651.7	658.8
122.5°	521.7	524.1	526.5	529.0	531.4	533.9	540.6	547.4	554.2	561.1	568.1
125°	456.0	456.2	456.2	456.3	456.4	456.7	462.3	467.8	473.5	479.1	484.8
127.5°	411.1	409.6	408.1	406.7	405.1	403.7	406.9	410.2	413.6	416.9	420.4
130°	383.3	380.7	377.9	375.4	372.6	370.0	371.4	372.6	374.0	375.3	376.7
132.5°	366.1	363.2	360.0	357.0	353.8	350.8	350.7	350.7	350.6	350.7	350.8
135°	354.1	351.2	348.2	345.3	342.2	339.4	338.7	337.8	337.1	336.4	335.8
137.5°	345.2	342.8	340.5	338.2	335.8	333.4	332.2	331.3	330.2	329.3	328.4
140°	338.3	336.5	334.5	332.7	330.7	329.0	327.9	327.2	326.3	325.5	324.7
142.5°	332.6	331.3	329.8	328.5	327.1	325.7	324.8	323.9	323.1	322.3	321.6
145°	329.5	328.7	327.8	326.8	325.8	325.1	324.2	323.7	322.9	322.4	321.9
147.5°	324.6	323.9	323.4	322.7	322.2	321.5	321.0	320.7	320.1	319.8	319.4
150°	319.6	319.1	318.4	318.1	317.3	316.9	316.6	316.4	316.0	316.0	315.6
152.5°	313.1	312.8	312.2	311.8	311.2	310.7	310.4	310.3	310.1	310.0	309.6
155°	308.6	308.3	307.9	307.6	307.2	307.0	306.6	306.2	306.0	305.6	305.2
157.5°	305.7	305.4	305.0	304.8	304.4	304.1	303.8	303.5	303.2	302.9	302.5
160°	303.8	303.6	303.3	303.0	302.7	302.4	301.9	301.5	300.9	300.6	300.1
162.5°	303.9	303.3	303.1	302.6	302.1	301.8	301.4	301.0	300.7	300.5	300.1
165°	303.6	303.3	303.1	302.8	302.5	302.2	301.8	301.4	300.9	300.5	300.0
167.5°	305.4	305.2	304.9	304.7	304.4	304.0	303.6	303.3	302.8	302.4	301.9
170°	306.1	305.8	305.4	305.0	304.6	304.3	303.8	303.4	303.0	302.7	302.1
172.5°	308.2	308.0	307.5	307.3	306.9	306.6	306.2	306.0	305.6	305.2	304.9
175°	307.6	307.6	307.5	307.3	307.3	307.1	306.9	306.9	306.7	306.6	306.4
177.5°	308.6	308.5	308.5	308.4	308.3	308.3	308.1	307.9	307.7	307.4	307.3
180°	306.7	306.7	306.7	306.7	306.7	306.7	306.7	306.7	306.7	306.7	306.7



TEST NUMBER: P1444805
 CATALOG NUMBER: EHBR1-24-UNV-TA-L940-UPL24

CANDELA DISTRIBUTION (continued):

	82.5°	85°	87.5°	90°	92.5°	95°	97.5°	100°	102.5°	105°	107.5°
0°	19898.6	19898.6	19898.6	19898.6	19898.6	19898.6	19898.6	19898.6	19898.6	19898.6	19898.6
2.5°	19975.1	19970.1	19972.5	19963.1	19965.4	19954.1	19953.1	19940.3	19939.1	19927.1	19922.5
5°	20651.5	20640.3	20652.9	20633.3	20637.2	20611.7	20609.6	20576.7	20565.3	20524.2	20506.5
7.5°	21394.8	21390.6	21398.2	21381.9	21381.4	21358.6	21349.3	21319.8	21301.5	21258.3	21230.7
10°	21557.6	21561.4	21555.2	21556.8	21547.9	21545.4	21536.4	21530.6	21515.8	21504.6	21488.1
12.5°	20881.4	20885.5	20859.7	20876.0	20863.2	20893.4	20890.8	20926.4	20931.9	20976.8	20993.9
15°	19318.7	19313.9	19264.3	19295.5	19278.8	19345.0	19359.9	19448.9	19496.5	19611.0	19681.2
17.5°	16957.9	16945.1	16875.5	16913.5	16894.1	16991.7	17024.5	17167.0	17255.8	17440.1	17571.5
20°	14143.8	14119.3	14037.8	14082.2	14062.4	14173.2	14220.0	14392.2	14506.7	14750.9	14924.6
22.5°	11294.6	11256.0	11176.2	11217.7	11198.8	11313.8	11374.6	11547.4	11678.6	11929.3	12132.0
25°	8736.1	8701.8	8624.5	8653.6	8646.6	8743.8	8797.9	8961.3	9090.3	9329.0	9522.5
27.5°	6663.2	6627.4	6557.7	6578.3	6571.2	6654.0	6705.1	6841.5	6952.5	7153.5	7323.4
30°	5099.7	5056.6	4997.4	5008.8	5004.0	5071.0	5118.6	5233.6	5328.8	5498.7	5645.0
32.5°	3908.9	3865.6	3811.3	3816.6	3809.4	3862.0	3901.3	4001.2	4084.1	4228.6	4356.0
35°	2990.9	3041.5	2925.5	2999.0	2922.5	3034.8	2994.4	3056.9	3128.2	3249.9	3356.2
37.5°	2299.3	2264.0	2234.1	2230.9	2230.7	2256.8	2287.6	2347.7	2410.5	2501.2	2594.8
40°	1822.0	1797.2	1778.0	1776.6	1778.0	1796.5	1819.2	1860.8	1906.8	1971.9	2040.7
42.5°	1511.2	1494.7	1483.1	1482.3	1486.0	1499.1	1514.9	1539.6	1569.5	1611.7	1658.9
45°	1307.9	1298.8	1292.4	1292.0	1293.7	1300.5	1309.6	1325.0	1344.0	1370.3	1400.2
47.5°	1165.3	1163.2	1159.1	1159.2	1157.4	1160.2	1161.2	1169.9	1179.9	1199.8	1238.8
50°	1061.5	1061.5	1058.7	1058.5	1055.9	1055.7	1053.5	1057.0	1061.7	1074.0	1086.4
52.5°	979.4	979.2	976.1	975.5	972.7	972.5	970.7	972.0	972.6	978.9	986.3
55°	915.2	913.4	909.4	908.1	907.1	908.6	907.9	908.0	907.1	909.8	912.0
57.5°	869.2	866.7	863.0	861.9	861.6	863.5	863.5	862.9	859.4	857.1	853.8
60°	832.8	830.3	826.3	825.3	825.8	828.5	828.3	826.1	821.0	816.5	811.2
62.5°	797.0	796.0	793.9	793.7	793.1	793.6	791.7	789.4	784.3	779.5	773.8
65°	749.0	749.6	748.0	748.2	746.4	746.1	743.3	741.0	735.8	731.5	725.7
67.5°	699.2	699.6	698.3	698.3	697.3	697.5	695.8	693.7	689.3	685.8	681.3
70°	658.1	659.1	658.4	658.7	657.5	657.0	654.4	652.2	647.8	644.9	640.8
72.5°	608.9	611.2	611.1	611.6	609.9	608.9	605.8	603.1	599.1	596.7	593.6
75°	555.8	558.7	559.5	560.8	558.2	556.9	553.5	551.4	548.1	546.7	544.5
77.5°	504.0	507.2	510.2	513.0	509.0	505.3	500.9	497.7	492.9	491.1	487.7
80°	445.8	451.4	458.1	463.7	456.4	449.1	441.9	436.6	430.3	427.7	423.6
82.5°	369.9	375.5	379.5	383.0	378.0	372.6	365.7	361.0	354.2	351.7	346.9
85°	281.0	288.2	290.4	292.4	289.1	286.2	279.7	270.9	266.6	259.9	256.5
87.5°	184.8	189.1	189.9	190.5	188.6	187.2	183.0	178.9	171.5	166.2	159.8
90°	90.6	92.2	89.4	89.3	87.9	89.3	86.1	86.0	81.1	80.0	75.7
92.5°	30.0	28.0	26.2	24.4	26.6	28.0	30.2	31.7	33.7	35.3	37.4
95°	41.1	38.9	36.9	34.8	36.4	38.1	39.8	41.5	43.1	44.8	46.5
97.5°	56.7	55.3	53.9	52.5	53.6	54.5	55.5	56.5	57.5	58.4	59.5
100°	72.7	71.6	70.4	69.3	69.3	69.3	69.3	69.3	69.3	69.3	69.3
102.5°	117.9	113.2	108.4	103.7	107.0	110.1	113.4	116.5	119.8	123.0	126.3
105°	224.8	211.8	198.8	185.8	198.3	210.9	223.6	236.2	248.7	261.5	274.2
107.5°	410.3	389.8	369.2	348.6	371.6	394.6	417.6	440.5	463.4	486.3	509.5
110°	614.4	594.9	575.2	555.6	579.9	604.4	628.7	653.0	677.5	701.8	726.2



TEST NUMBER: P1444805
 CATALOG NUMBER: EHBR1-24-UNV-TA-L940-UPL24

CANDELA DISTRIBUTION (continued):

	82.5°	85°	87.5°	90°	92.5°	95°	97.5°	100°	102.5°	105°	107.5°
112.5°	750.8	741.3	731.8	722.3	738.0	753.6	769.4	785.2	800.8	816.6	832.3
115°	786.4	785.8	785.3	784.7	792.2	799.5	807.0	814.4	822.0	829.4	837.0
117.5°	743.2	748.4	753.7	759.0	761.4	763.8	766.3	768.6	771.2	773.6	776.2
120°	665.8	672.7	679.8	687.0	686.0	685.0	684.0	683.1	682.3	681.5	680.8
122.5°	575.0	582.1	589.2	596.3	594.2	592.1	590.1	588.1	586.2	584.2	582.4
125°	490.8	496.6	502.5	508.5	506.3	504.3	502.3	500.4	498.3	496.5	494.7
127.5°	423.9	427.5	431.1	434.8	433.8	432.8	432.1	431.2	430.4	429.8	429.1
130°	378.2	379.8	381.5	383.1	383.4	383.7	384.2	384.6	385.2	385.7	386.4
132.5°	351.1	351.3	351.7	352.1	353.2	354.3	355.6	356.9	358.4	359.7	361.5
135°	335.3	334.9	334.5	334.3	336.0	337.5	339.4	341.2	343.2	345.3	347.4
137.5°	327.7	326.9	326.3	325.6	327.3	329.0	330.7	332.6	334.6	336.6	338.8
140°	324.0	323.4	323.0	322.4	324.1	325.7	327.5	329.3	331.3	333.3	335.5
142.5°	321.0	320.3	319.8	319.5	320.8	322.3	324.0	325.7	327.5	329.3	331.2
145°	321.4	320.9	320.6	320.2	321.2	322.3	323.6	324.8	326.2	327.4	329.0
147.5°	319.1	318.8	318.6	318.4	319.3	320.0	321.0	321.8	322.9	323.9	325.1
150°	315.6	315.4	315.4	315.3	315.7	316.3	316.9	317.4	318.1	318.7	319.6
152.5°	309.7	309.4	309.5	309.4	309.8	310.2	310.8	311.3	311.9	312.5	313.3
155°	305.1	304.9	304.6	304.5	304.6	304.7	305.0	305.1	305.5	305.7	306.0
157.5°	302.4	302.1	301.9	301.7	301.7	301.6	301.7	301.6	301.8	301.7	301.9
160°	299.8	299.2	299.0	298.6	298.7	298.7	298.9	298.9	299.1	299.2	299.4
162.5°	299.9	299.6	299.3	299.1	298.9	298.6	298.5	298.2	298.0	297.8	297.8
165°	299.5	299.2	298.8	298.3	298.2	298.2	298.0	298.0	297.9	297.9	297.9
167.5°	301.6	301.0	300.7	300.3	300.0	299.5	299.3	299.0	298.7	298.3	298.2
170°	301.9	301.5	301.2	300.8	300.6	300.5	300.4	300.2	300.1	300.0	300.0
172.5°	304.6	304.3	304.0	303.7	303.5	303.3	303.3	303.3	303.1	303.1	303.1
175°	306.3	306.2	306.1	306.0	305.8	305.6	305.5	305.3	305.2	304.9	304.8
177.5°	307.1	306.9	306.7	306.6	306.5	306.5	306.5	306.5	306.5	306.4	306.4
180°	306.7	306.7	306.7	306.7	306.7	306.7	306.7	306.7	306.7	306.7	306.7



TEST NUMBER: P1444805
 CATALOG NUMBER: EHBR1-24-UNV-TA-L940-UPL24

CANDELA DISTRIBUTION (continued):

	110°	112.5°	115°	117.5°	120°	122.5°	125°	127.5°	130°	132.5°	135°
0°	19898.6	19898.6	19898.6	19898.6	19898.6	19898.6	19898.6	19898.6	19898.6	19898.6	19898.6
2.5°	19909.6	19904.4	19890.6	19883.8	19871.1	19864.6	19854.7	19848.2	19840.2	19834.3	19831.2
5°	20461.3	20435.8	20384.8	20353.4	20298.2	20262.0	20207.3	20167.1	20110.7	20068.9	20015.6
7.5°	21178.9	21139.9	21074.5	21025.0	20947.9	20889.0	20802.4	20733.3	20637.7	20558.3	20460.7
10°	21471.2	21448.3	21419.0	21387.1	21344.5	21302.5	21243.5	21183.3	21103.1	21023.2	20919.0
12.5°	21039.3	21060.7	21103.1	21122.8	21155.2	21166.1	21181.1	21174.1	21160.9	21128.3	21081.1
15°	19816.2	19905.8	20047.3	20145.3	20282.6	20378.9	20506.5	20588.5	20683.1	20739.5	20793.2
17.5°	17804.2	17977.5	18227.4	18426.7	18694.3	18911.9	19178.5	19387.9	19629.8	19815.3	20012.8
20°	15227.2	15469.9	15814.9	16107.8	16495.5	16824.3	17245.6	17598.5	18010.1	18353.2	18723.7
22.5°	12453.7	12739.1	13134.3	13487.7	13950.7	14364.3	14892.1	15358.7	15915.2	16413.7	16965.2
25°	9837.2	10116.9	10519.5	10885.3	11385.3	11840.8	12417.4	12952.8	13598.5	14200.7	14892.1
27.5°	7593.3	7841.8	8195.8	8525.0	8982.8	9430.1	10015.3	10586.1	11275.2	11922.4	12667.5
30°	5864.1	6065.9	6349.4	6614.3	6981.8	7347.6	7868.9	8396.7	9082.4	9753.1	10517.0
32.5°	4544.6	4716.5	4953.2	5168.2	5451.4	5727.2	6111.1	6532.9	7134.4	7776.8	8515.4
35°	3518.0	3665.1	3866.5	4051.8	4284.6	4503.7	4790.1	5091.2	5550.2	6090.5	6751.5
37.5°	2804.7	2864.7	3008.5	3160.2	3353.7	3533.6	3757.7	3980.4	4308.8	4735.1	5275.1
40°	2133.0	2228.2	2345.2	2464.8	2611.2	2755.5	3001.4	3119.7	3335.9	3642.0	4061.0
42.5°	1721.0	1788.0	1870.4	1953.5	2055.6	2156.0	2280.4	2407.0	2568.6	2775.9	3074.1
45°	1440.2	1483.8	1536.9	1592.4	1659.4	1727.9	1811.2	1898.1	2007.7	2135.1	2316.2
47.5°	1252.6	1276.7	1311.4	1349.2	1395.1	1442.7	1496.8	1552.1	1620.2	1695.8	1798.9
50°	1106.1	1126.3	1153.2	1178.4	1210.2	1258.8	1280.4	1310.9	1351.8	1396.4	1454.0
52.5°	1000.1	1013.5	1030.5	1045.0	1065.1	1083.2	1107.2	1128.2	1156.5	1183.3	1220.5
55°	917.7	922.5	932.1	941.4	955.3	967.8	984.2	998.0	1016.1	1032.0	1055.5
57.5°	853.9	854.3	858.8	863.6	872.6	880.4	891.7	900.7	913.3	923.4	937.5
60°	808.1	805.7	806.5	808.3	813.2	818.4	825.6	831.5	839.4	845.1	853.0
62.5°	770.0	766.2	765.3	764.8	767.3	769.2	773.1	776.0	780.4	783.0	787.1
65°	721.8	717.4	715.6	713.5	714.2	713.6	715.1	715.2	717.5	718.0	720.4
67.5°	678.1	674.4	672.1	669.3	668.1	666.1	665.2	663.2	663.0	661.4	661.0
70°	638.4	634.6	632.8	630.2	628.9	626.2	624.6	621.3	619.4	616.4	614.7
72.5°	592.2	590.2	589.6	587.9	587.4	585.9	585.3	582.9	581.6	579.0	577.6
75°	544.1	542.4	542.2	540.4	540.4	538.6	538.1	535.7	534.5	531.9	530.8
77.5°	486.7	484.2	483.5	481.4	481.9	481.0	481.8	480.0	479.1	476.5	475.7
80°	422.1	418.9	417.6	414.9	415.6	414.3	415.6	415.4	416.4	414.3	413.9
82.5°	345.5	342.0	341.4	339.5	340.7	340.9	343.6	342.1	342.7	340.8	341.6
85°	251.5	248.8	245.1	244.7	242.2	244.7	241.5	243.6	240.2	242.6	239.3
87.5°	155.9	150.5	147.6	143.7	142.2	138.4	136.9	134.2	135.0	133.7	134.4
90°	75.7	72.1	72.9	70.8	72.2	70.7	72.9	72.4	74.9	74.3	77.0
92.5°	38.9	40.7	44.1	47.6	50.8	54.1	57.6	61.1	64.3	67.8	71.0
95°	48.2	49.8	54.3	58.8	63.3	67.7	72.4	76.9	81.3	85.8	90.3
97.5°	60.5	61.5	66.0	70.4	74.9	79.4	83.8	88.5	93.0	97.5	101.9
100°	69.3	69.4	82.2	94.8	107.6	120.5	133.1	145.9	158.8	171.4	184.2
102.5°	129.5	132.8	164.9	197.2	229.4	261.5	293.7	326.0	358.1	390.5	422.8
105°	286.8	299.4	348.5	397.6	446.7	495.9	545.2	594.5	643.6	692.8	742.0
107.5°	532.4	555.4	599.8	644.2	688.6	733.1	777.6	822.1	866.5	911.0	955.6
110°	750.6	775.0	804.8	834.6	864.4	894.1	923.9	953.7	983.5	1013.4	1043.3



TEST NUMBER: P1444805
 CATALOG NUMBER: EHBR1-24-UNV-TA-L940-UPL24

CANDELA DISTRIBUTION (continued):

	110°	112.5°	115°	117.5°	120°	122.5°	125°	127.5°	130°	132.5°	135°
112.5°	848.0	863.8	881.2	898.6	915.9	933.3	950.7	968.2	985.6	1003.1	1020.6
115°	844.4	852.1	858.8	865.6	872.3	879.1	886.0	892.9	899.9	906.7	913.7
117.5°	778.6	781.3	782.3	783.4	784.4	785.7	786.9	788.2	789.5	790.7	791.9
120°	679.9	679.2	678.1	677.0	675.9	675.0	674.0	673.0	672.2	671.3	670.3
122.5°	580.4	578.7	577.7	576.7	575.8	574.9	573.9	573.1	572.3	571.5	570.6
125°	492.9	491.3	492.3	493.3	494.4	495.5	496.7	498.0	499.1	500.3	501.5
127.5°	428.5	428.0	430.6	433.3	436.0	438.7	441.5	444.3	447.0	449.9	452.6
130°	387.1	387.9	391.3	394.7	398.2	401.7	405.3	408.8	412.3	415.8	419.2
132.5°	363.0	364.7	367.9	371.3	374.6	378.0	381.4	384.8	388.2	391.7	394.9
135°	349.6	351.9	354.9	357.9	361.0	364.2	367.3	370.4	373.4	376.6	379.6
137.5°	340.9	343.2	345.7	348.2	350.6	353.2	355.7	358.2	360.6	363.2	365.7
140°	337.6	339.9	341.2	342.8	344.2	345.7	347.0	348.6	350.0	351.6	352.9
142.5°	333.2	335.3	336.1	337.1	338.1	339.2	340.1	341.1	342.0	342.9	343.8
145°	330.4	332.0	332.1	332.3	332.5	332.7	332.8	333.1	333.1	333.2	333.3
147.5°	326.2	327.4	327.1	327.2	327.1	327.0	326.9	326.9	326.7	326.7	326.5
150°	320.3	321.1	320.8	320.6	320.1	319.8	319.5	319.2	318.8	318.5	318.1
152.5°	313.9	314.6	314.1	313.8	313.3	312.9	312.4	312.1	311.5	311.2	310.8
155°	306.2	306.6	306.3	306.1	305.9	305.6	305.3	305.3	305.1	304.8	304.7
157.5°	301.9	301.9	301.8	301.7	301.5	301.4	301.2	301.2	301.1	301.2	301.2
160°	299.4	299.7	299.5	299.3	299.2	299.1	299.0	298.9	298.9	299.0	299.1
162.5°	297.6	297.5	297.4	297.2	297.1	296.9	296.9	297.0	296.9	297.0	297.1
165°	298.0	298.1	297.8	297.6	297.3	297.1	296.9	296.8	296.7	296.6	296.6
167.5°	298.0	297.9	297.9	297.9	297.9	298.0	298.1	298.4	298.5	298.8	298.9
170°	299.9	300.0	299.8	299.7	299.6	299.5	299.5	299.3	299.4	299.4	299.3
172.5°	303.1	303.1	302.8	302.5	302.2	301.9	301.7	301.6	301.3	301.1	300.8
175°	304.6	304.5	304.3	304.2	304.0	303.8	303.6	303.4	303.3	303.2	303.0
177.5°	306.3	306.1	306.0	306.0	306.0	306.0	306.0	305.9	305.9	305.9	305.7
180°	306.7	306.7	306.7	306.7	306.7	306.7	306.7	306.7	306.7	306.7	306.7



TEST NUMBER: P1444805
 CATALOG NUMBER: EHBR1-24-UNV-TA-L940-UPL24

CANDELA DISTRIBUTION (continued):

	137.5°	140°	142.5°	145°	147.5°	150°	152.5°	155°	157.5°	160°	162.5°
0°	19898.6	19898.6	19898.6	19898.6	19898.6	19898.6	19898.6	19898.6	19898.6	19898.6	19898.6
2.5°	19827.2	19826.9	19825.0	19825.9	19826.3	19827.7	19829.4	19831.2	19831.5	19833.0	19833.2
5°	19975.5	19926.5	19890.3	19850.3	19820.3	19793.3	19775.3	19761.0	19755.5	19756.8	19760.2
7.5°	20377.9	20276.6	20193.1	20098.1	20018.9	19935.1	19865.5	19799.4	19751.3	19715.4	19695.3
10°	20819.4	20696.1	20578.1	20440.7	20310.2	20171.2	20045.1	19918.2	19812.4	19720.4	19653.0
12.5°	21015.4	20928.2	20826.2	20696.5	20556.9	20396.4	20234.2	20060.5	19898.7	19748.7	19627.7
15°	20807.9	20808.1	20770.9	20708.6	20611.7	20483.4	20329.0	20147.8	19957.1	19762.4	19584.6
17.5°	20149.4	20273.6	20342.8	20386.5	20373.0	20325.8	20227.4	20088.3	19910.5	19703.2	19486.2
20°	19018.4	19311.5	19520.5	19708.4	19813.7	19883.6	19876.7	19820.0	19693.4	19517.1	19291.2
22.5°	17434.3	17926.2	18314.3	18676.2	18930.0	19136.6	19234.7	19276.4	19219.0	19096.2	18884.0
25°	15510.0	16178.9	16749.6	17303.5	17719.0	18076.1	18290.6	18441.8	18453.8	18389.7	18200.3
27.5°	13371.9	14161.4	14883.7	15619.9	16204.1	16717.4	17054.3	17300.8	17379.1	17368.9	17196.9
30°	11236.5	12065.3	12861.5	13719.9	14442.9	15098.7	15543.7	15877.1	16005.6	16030.2	15864.8
32.5°	9219.8	10037.1	10831.1	11728.5	12524.2	13275.8	13801.5	14197.5	14346.9	14382.1	14200.7
35°	7389.5	8143.5	8898.1	9767.9	10559.0	11337.3	11891.2	12305.8	12445.4	12468.9	12258.9
37.5°	5802.4	6444.8	7102.3	7882.7	8609.2	9340.2	9866.4	10256.1	10357.8	10351.4	10113.9
40°	4466.0	4965.5	5493.7	6136.3	6740.3	7358.1	7802.5	8124.7	8178.1	8138.6	7888.9
42.5°	3358.2	3718.9	4101.9	4581.6	5029.7	5492.1	5815.4	6054.6	6062.2	5999.7	5775.6
45°	2501.8	2853.8	3014.4	3304.4	3593.0	3900.5	4097.9	4245.7	4222.8	4167.8	3997.5
47.5°	1907.3	2042.4	2185.9	2365.7	2533.9	2882.8	2857.0	3094.2	2923.3	3039.9	2783.4
50°	1514.6	1590.1	1667.5	1762.9	1850.7	1941.9	1998.9	2041.4	2035.9	2017.7	1968.5
52.5°	1288.5	1311.9	1350.0	1404.2	1453.3	1502.6	1535.1	1561.4	1562.0	1554.5	1529.8
55°	1076.9	1106.6	1133.9	1169.4	1229.8	1239.1	1285.7	1276.2	1279.9	1266.9	1280.2
57.5°	949.5	966.8	982.1	1003.3	1020.7	1041.1	1053.1	1064.7	1063.6	1061.1	1048.4
60°	859.3	868.8	877.3	889.6	899.2	910.7	916.3	922.1	920.2	915.9	904.6
62.5°	789.6	795.6	800.5	808.4	814.3	821.4	824.2	826.7	824.2	820.2	810.3
65°	720.9	724.8	727.9	733.9	738.0	744.1	746.5	748.9	746.6	743.5	735.8
67.5°	659.0	659.3	659.0	661.5	662.8	666.4	667.5	669.3	666.6	663.9	657.5
70°	612.0	611.1	609.9	610.9	611.1	612.8	613.1	612.8	609.7	604.9	597.9
72.5°	575.3	574.8	573.9	574.7	574.7	576.3	575.9	575.0	571.1	566.5	559.5
75°	528.1	527.8	526.0	526.0	524.5	525.1	523.1	522.1	517.7	513.9	507.7
77.5°	472.9	472.0	469.4	468.4	465.6	464.4	460.9	459.1	454.6	451.6	446.3
80°	411.2	410.3	406.9	405.1	400.7	397.9	392.6	389.5	384.4	381.4	376.3
82.5°	339.9	340.2	337.0	334.6	328.3	323.5	316.4	312.6	307.0	304.0	298.7
85°	241.8	238.3	240.1	240.0	236.0	231.8	226.0	222.0	217.3	214.5	210.7
87.5°	132.6	133.4	132.5	131.6	128.8	126.7	122.2	119.8	116.4	114.7	111.9
90°	71.6	69.6	64.5	62.5	57.3	54.2	48.5	45.9	40.6	39.4	36.1
92.5°	67.2	63.4	59.8	55.9	52.3	48.5	44.7	41.0	37.2	35.7	34.7
95°	84.8	79.4	73.9	68.4	63.0	57.5	52.1	46.7	41.2	40.1	38.9
97.5°	95.5	89.1	82.6	76.3	69.9	63.4	57.1	50.7	44.3	43.5	42.9
100°	169.5	154.7	139.8	125.0	110.3	95.5	80.6	65.8	51.1	50.2	49.4
102.5°	386.8	350.9	315.0	279.1	243.4	207.5	171.5	135.6	99.7	94.5	89.3
105°	687.6	633.3	579.0	524.7	470.4	416.0	361.7	307.3	252.9	235.4	218.0
107.5°	904.4	853.4	802.3	751.3	700.2	649.2	598.0	547.0	495.8	465.1	434.3
110°	1002.8	962.2	921.8	881.2	840.7	800.2	759.6	719.0	678.5	652.0	625.6



TEST NUMBER: P1444805
 CATALOG NUMBER: EHBR1-24-UNV-TA-L940-UPL24

CANDELA DISTRIBUTION (continued):

	137.5°	140°	142.5°	145°	147.5°	150°	152.5°	155°	157.5°	160°	162.5°
112.5°	991.0	961.2	931.6	901.8	872.2	842.4	812.8	782.9	753.1	737.1	721.1
115°	895.9	878.0	860.1	842.2	824.3	806.4	788.5	770.5	752.6	744.1	735.6
117.5°	782.9	773.7	764.7	755.6	746.3	737.1	728.0	718.8	709.5	706.6	703.7
120°	667.7	665.0	662.1	659.4	656.5	653.8	650.9	648.1	645.2	645.5	645.9
122.5°	571.8	572.9	574.0	574.9	576.0	577.0	578.1	579.0	579.9	582.3	584.5
125°	504.2	506.8	509.5	512.1	514.7	517.3	520.0	522.5	525.3	527.4	529.8
127.5°	455.8	458.6	461.7	464.6	467.7	470.5	473.6	476.3	479.3	481.3	483.5
130°	421.9	424.4	427.1	429.6	432.2	434.7	437.2	439.8	442.3	444.0	445.6
132.5°	397.3	399.6	401.9	404.1	406.6	408.7	411.1	413.4	415.8	416.9	418.2
135°	381.4	383.1	384.9	386.4	388.3	390.0	391.8	393.5	395.4	396.1	397.1
137.5°	367.1	368.5	370.0	371.3	372.8	374.1	375.7	377.1	378.8	379.1	379.7
140°	354.5	355.9	357.5	358.9	360.5	361.9	363.7	365.3	367.0	367.4	367.9
142.5°	345.0	346.1	347.2	348.4	349.7	350.9	352.2	353.7	355.0	355.4	355.9
145°	334.8	336.1	337.5	338.8	340.3	341.8	343.5	345.0	346.7	346.9	347.2
147.5°	327.7	328.8	330.1	331.3	332.5	333.7	335.3	336.6	338.1	338.4	338.6
150°	319.5	320.7	322.0	323.2	324.7	326.1	327.6	329.1	330.8	331.2	331.7
152.5°	312.2	313.5	314.9	316.4	317.9	319.5	321.1	322.7	324.4	324.9	325.3
155°	306.1	307.4	308.9	310.4	311.9	313.4	315.0	316.6	318.2	318.8	319.3
157.5°	302.5	303.6	305.0	306.3	307.7	309.0	310.5	311.8	313.4	313.8	314.2
160°	300.2	301.2	302.4	303.6	304.8	306.0	307.3	308.6	309.9	310.2	310.7
162.5°	298.2	299.3	300.5	301.7	303.0	304.1	305.4	306.5	307.8	308.2	308.7
165°	297.5	298.3	299.2	300.0	300.9	301.8	302.7	303.6	304.6	305.0	305.6
167.5°	299.6	300.2	300.8	301.5	302.2	303.0	303.7	304.4	305.1	305.6	306.0
170°	300.0	300.5	301.1	301.8	302.4	303.1	303.6	304.3	305.0	305.4	305.9
172.5°	301.2	301.5	302.0	302.3	302.8	303.2	303.6	304.1	304.5	305.0	305.4
175°	303.3	303.3	303.6	303.7	304.0	304.2	304.5	304.7	305.0	305.3	305.7
177.5°	305.8	306.0	306.0	306.2	306.5	306.7	306.9	307.1	307.3	307.7	308.1
180°	306.7	306.7	306.7	306.7	306.7	306.7	306.7	306.7	306.7	306.7	306.7



TEST NUMBER: P1444805
 CATALOG NUMBER: EHBR1-24-UNV-TA-L940-UPL24

CANDELA DISTRIBUTION (continued):

	165°	167.5°	170°	172.5°	175°	177.5°	180°	182.5°	185°	187.5°	190°
0°	19898.6	19898.6	19898.6	19898.6	19898.6	19898.6	19898.6	19898.6	19898.6	19898.6	19898.6
2.5°	19832.6	19832.3	19831.7	19830.8	19829.9	19830.4	19831.3	19833.6	19837.5	19843.3	19850.9
5°	19762.9	19767.0	19769.2	19769.6	19767.5	19766.3	19768.2	19773.6	19784.6	19803.1	19827.9
7.5°	19690.0	19694.9	19702.6	19708.4	19709.4	19708.0	19708.4	19716.9	19737.2	19773.2	19823.5
10°	19612.0	19597.2	19605.0	19619.2	19630.6	19632.7	19634.1	19644.2	19673.8	19728.2	19809.0
12.5°	19540.0	19493.1	19484.1	19496.9	19514.2	19519.7	19518.2	19522.5	19557.3	19629.1	19741.8
15°	19445.3	19357.0	19326.9	19330.2	19351.5	19359.1	19353.5	19345.0	19378.9	19466.5	19612.5
17.5°	19292.1	19149.7	19094.3	19091.8	19116.8	19123.4	19109.7	19083.2	19116.4	19225.9	19407.1
20°	19059.1	18849.0	18744.5	18727.9	18755.1	18747.1	18719.7	18679.7	18723.5	18856.5	19072.0
22.5°	18640.3	18374.1	18195.7	18138.1	18170.5	18148.9	18109.0	18057.8	18115.9	18267.1	18507.1
25°	17955.9	17648.3	17404.1	17267.0	17292.8	17254.2	17210.8	17148.6	17218.0	17391.5	17655.7
27.5°	16950.0	16594.7	16292.1	16065.2	16073.5	16022.8	15972.8	15892.4	15979.0	16184.5	16482.4
30°	15612.4	15201.3	14832.6	14524.4	14496.9	14447.7	14396.3	14290.9	14399.3	14645.2	14993.3
32.5°	13932.6	13476.1	13050.2	12660.5	12586.9	12538.9	12493.3	12371.9	12513.9	12800.5	13200.5
35°	11968.1	11481.9	11020.2	10575.0	10453.2	10405.2	10365.2	10248.9	10426.0	10738.1	11170.1
37.5°	9811.8	9315.1	8856.7	8400.2	8228.1	8163.0	8134.0	8057.8	8262.1	8570.7	9004.4
40°	7598.2	7136.3	6725.4	6322.1	6125.9	6026.3	6011.1	5997.2	6194.8	6462.5	6856.3
42.5°	5527.4	5154.7	4837.8	4529.7	4351.9	4215.8	4215.7	4257.1	4434.9	4635.4	4939.0
45°	3823.5	3573.4	3371.4	3165.5	3220.6	2949.3	3108.7	3026.9	3114.9	3244.1	3441.5
47.5°	2628.3	2491.8	2380.8	2265.8	2181.9	2101.9	2108.9	2160.5	2243.3	2320.0	2422.7
50°	1915.6	1846.1	1789.5	1729.8	1688.0	1652.7	1654.8	1677.1	1720.7	1761.1	1814.8
52.5°	1501.0	1462.6	1431.9	1398.9	1377.0	1359.5	1360.4	1371.3	1394.8	1417.9	1448.7
55°	1237.1	1232.6	1192.6	1163.0	1151.7	1139.9	1142.0	1146.3	1162.3	1175.8	1196.2
57.5°	1036.7	1018.8	1006.8	991.3	984.1	975.8	977.7	979.3	990.0	999.0	1013.7
60°	895.2	882.5	874.1	863.4	858.7	853.5	854.7	855.6	862.4	868.4	878.9
62.5°	801.2	789.8	782.5	774.3	770.9	767.4	768.2	768.5	772.8	777.2	785.1
65°	729.1	720.1	713.9	706.8	703.4	699.7	700.0	700.0	703.7	706.8	712.8
67.5°	652.8	646.0	642.0	636.4	634.1	630.4	630.3	629.0	631.4	632.7	636.7
70°	591.6	584.7	579.7	574.3	571.3	568.0	568.0	568.1	570.9	573.7	579.0
72.5°	553.8	547.2	542.7	538.0	535.1	532.3	531.9	531.6	533.6	535.1	538.6
75°	503.6	498.4	495.8	491.3	489.2	485.9	485.5	484.0	484.9	485.3	487.8
77.5°	442.9	438.0	435.8	431.4	429.5	425.9	425.6	424.0	424.7	424.2	426.2
80°	373.7	369.2	368.0	364.3	363.4	360.1	359.6	357.6	358.2	356.6	357.4
82.5°	296.4	292.3	291.4	288.0	288.0	285.0	284.8	281.8	281.8	279.2	275.1
85°	208.8	205.7	204.5	201.7	200.9	198.4	197.2	194.3	193.3	191.5	190.9
87.5°	110.2	108.3	106.6	105.3	102.8	98.5	98.1	95.0	95.3	93.2	93.3
90°	35.2	32.2	31.4	28.6	27.6	25.4	24.6	25.0	25.9	26.4	27.3
92.5°	33.4	32.1	30.8	29.6	28.3	27.1	25.8	27.1	28.3	29.6	30.8
95°	37.8	36.7	35.6	34.5	33.4	32.2	31.1	32.2	33.4	34.6	35.7
97.5°	42.1	41.5	40.7	40.1	39.3	38.7	37.9	38.8	39.4	40.2	40.8
100°	48.5	47.7	46.9	46.0	45.2	44.3	43.5	44.5	45.4	46.2	47.0
102.5°	84.2	79.1	73.9	68.8	63.5	58.4	53.2	58.4	63.5	68.8	74.0
105°	200.5	183.1	165.6	148.1	130.6	113.2	95.7	113.3	130.7	148.2	165.8
107.5°	403.6	373.0	342.2	311.5	280.7	250.0	219.2	250.0	280.8	311.5	342.3
110°	599.0	572.6	545.9	519.5	492.9	466.4	439.8	466.5	493.1	519.7	546.2



TEST NUMBER: P1444805
 CATALOG NUMBER: EHBR1-24-UNV-TA-L940-UPL24

CANDELA DISTRIBUTION (continued):

	165°	167.5°	170°	172.5°	175°	177.5°	180°	182.5°	185°	187.5°	190°
112.5°	704.9	688.8	672.6	656.6	640.3	624.2	608.0	624.4	640.6	657.0	673.1
115°	727.2	718.7	710.2	701.6	693.1	684.6	675.9	684.8	693.4	702.1	710.8
117.5°	700.6	697.7	694.7	691.7	688.7	685.7	682.5	685.9	689.0	692.4	695.5
120°	646.2	646.6	646.8	647.1	647.4	647.6	647.8	648.0	648.0	648.0	647.9
122.5°	586.8	589.0	591.1	593.3	595.4	597.5	599.5	597.7	596.0	594.2	592.2
125°	532.0	534.4	536.5	538.9	540.9	543.2	545.1	543.6	541.8	540.0	537.9
127.5°	485.6	487.6	489.6	491.7	493.6	495.5	497.2	495.9	494.3	492.8	491.2
130°	447.2	448.9	450.4	451.8	453.2	454.5	455.8	454.9	454.0	453.2	452.0
132.5°	419.3	420.6	421.8	423.0	423.9	424.9	425.7	425.4	424.8	424.4	423.6
135°	397.9	398.7	399.4	400.3	400.9	401.5	401.8	402.0	401.8	401.7	401.4
137.5°	380.1	380.6	380.9	381.2	381.5	381.6	381.7	382.2	382.4	382.9	382.9
140°	368.3	368.8	369.1	369.5	369.8	370.0	370.0	370.5	370.8	371.1	371.2
142.5°	356.3	356.7	357.1	357.6	357.7	357.9	357.9	358.4	358.7	359.0	359.1
145°	347.5	347.8	348.0	348.2	348.2	348.3	348.1	348.9	349.3	349.7	350.0
147.5°	338.9	339.2	339.3	339.4	339.5	339.5	339.4	340.0	340.4	340.8	341.3
150°	332.1	332.7	333.0	333.4	333.6	333.9	333.9	334.4	334.6	334.8	334.8
152.5°	325.8	326.1	326.5	326.7	327.1	327.2	327.4	327.7	328.1	328.3	328.5
155°	319.7	320.3	320.7	321.1	321.4	321.8	322.1	322.3	322.6	322.7	322.9
157.5°	314.7	315.2	315.5	316.0	316.3	316.8	317.0	317.4	317.7	318.0	318.1
160°	311.1	311.6	311.9	312.4	312.8	313.1	313.4	313.8	314.1	314.2	314.5
162.5°	309.0	309.5	309.7	310.1	310.5	310.9	311.2	311.5	311.8	312.1	312.3
165°	306.0	306.5	307.1	307.5	308.1	308.5	308.9	309.1	309.2	309.3	309.5
167.5°	306.4	306.9	307.3	307.8	308.2	308.7	309.1	309.2	309.4	309.4	309.5
170°	306.2	306.6	307.1	307.4	307.9	308.3	308.7	308.7	308.7	308.8	308.9
172.5°	305.9	306.4	306.9	307.4	307.8	308.4	308.7	308.8	308.7	308.6	308.3
175°	306.0	306.5	306.9	307.3	307.6	308.1	308.6	308.3	308.3	308.1	307.9
177.5°	308.7	309.2	309.8	310.1	310.6	311.0	311.5	311.1	310.8	310.4	310.1
180°	306.7	306.7	306.7	306.7	306.7	306.7	306.7	306.7	306.7	306.7	306.7



TEST NUMBER: P1444805
 CATALOG NUMBER: EHBR1-24-UNV-TA-L940-UPL24

CANDELA DISTRIBUTION (continued):

	192.5°	195°	197.5°	200°	202.5°	205°	207.5°	210°	212.5°	215°	217.5°
0°	19898.6	19898.6	19898.6	19898.6	19898.6	19898.6	19898.6	19898.6	19898.6	19898.6	19898.6
2.5°	19861.5	19871.4	19886.6	19900.4	19921.1	19937.5	19962.1	19980.7	20008.4	20026.5	20056.6
5°	19863.2	19902.1	19953.2	20003.1	20063.0	20117.4	20185.0	20242.7	20310.6	20366.1	20435.6
7.5°	19891.3	19966.3	20056.1	20146.6	20248.9	20344.6	20452.5	20550.1	20656.9	20747.2	20845.9
10°	19912.1	20027.6	20160.0	20293.2	20433.4	20563.6	20695.1	20808.8	20915.0	21002.4	21079.5
12.5°	19883.9	20043.1	20213.0	20377.0	20532.9	20667.7	20780.8	20868.2	20928.6	20969.5	20979.1
15°	19788.4	19980.1	20164.7	20328.0	20457.4	20557.2	20608.8	20633.0	20607.1	20563.9	20469.3
17.5°	19610.0	19812.1	19977.3	20106.1	20174.4	20201.5	20158.8	20084.3	19938.9	19777.4	19544.3
20°	19283.0	19471.3	19591.0	19661.4	19643.0	19575.4	19413.9	19217.6	18927.2	18617.8	18209.5
22.5°	18709.3	18873.9	18937.7	18943.0	18831.4	18662.1	18370.7	18034.0	17576.0	17099.8	16514.2
25°	17848.2	17992.3	18002.5	17945.8	17741.6	17467.2	17039.4	16563.2	15940.7	15306.2	14572.3
27.5°	16680.3	16818.6	16784.7	16679.1	16395.6	16028.4	15480.8	14865.4	14098.1	13348.7	12536.9
30°	15212.3	15360.1	15320.4	15184.8	14847.6	14413.7	13769.3	13054.3	12202.4	11401.9	10579.3
32.5°	13455.4	13642.4	13614.9	13486.0	13134.2	12669.7	11970.5	11212.3	10340.7	9551.9	8751.7
35°	11458.5	11685.4	11697.2	11613.0	11286.3	10827.3	10136.9	9402.9	8568.1	7823.8	7084.5
37.5°	9307.0	9570.1	9624.3	9601.5	9330.8	8925.5	8296.5	7638.1	6898.5	6246.2	5614.0
40°	7143.7	7410.0	7502.4	7529.9	7330.1	7016.2	6500.0	5968.6	5365.6	4837.0	4335.0
42.5°	5170.8	5407.0	5496.2	5552.4	5427.8	5218.4	4841.9	4456.0	4014.2	3633.0	3267.5
45°	3591.2	3758.3	3826.2	3882.7	3814.8	3696.8	3458.9	3217.5	2926.0	2676.9	2441.0
47.5°	2510.9	2602.9	2647.8	2675.2	2648.9	2587.4	2457.9	2318.1	2153.5	2007.9	1867.9
50°	1861.1	1910.2	1933.5	1949.4	1930.3	1896.0	1825.9	1749.8	1659.4	1577.0	1496.4
52.5°	1474.9	1502.9	1516.9	1525.5	1514.5	1493.5	1452.7	1407.6	1353.4	1302.4	1275.7
55°	1242.4	1241.0	1273.3	1257.7	1273.3	1238.5	1231.2	1181.6	1136.6	1104.8	1070.6
57.5°	1024.6	1039.3	1045.4	1052.4	1047.8	1041.5	1024.2	1006.5	982.7	962.9	941.7
60°	886.9	898.9	905.7	912.6	912.2	909.8	899.8	889.2	874.3	862.4	849.7
62.5°	792.1	802.5	809.2	815.7	816.4	815.4	807.8	800.5	790.3	782.9	774.0
65°	717.5	724.8	729.4	734.6	734.3	732.9	726.0	719.9	711.6	706.4	699.9
67.5°	639.4	644.9	648.4	653.4	654.4	654.7	650.8	648.1	644.0	642.5	640.2
70°	583.9	590.6	596.3	602.5	605.9	607.5	605.9	604.5	602.0	601.0	599.3
72.5°	541.8	547.5	551.9	557.6	560.8	563.1	561.8	561.0	558.9	558.6	557.5
75°	489.6	493.5	496.0	500.3	502.0	504.1	503.2	503.6	503.0	504.7	504.6
77.5°	426.9	429.8	430.9	434.0	434.3	436.8	437.5	440.5	442.6	447.4	449.9
80°	356.2	358.0	358.0	361.2	362.6	367.0	369.0	374.0	376.3	380.5	380.9
82.5°	276.7	274.6	276.7	275.4	279.4	284.3	285.0	289.2	290.1	292.8	290.7
85°	189.1	189.0	187.4	187.6	186.3	187.0	186.2	187.0	186.3	186.3	184.5
87.5°	90.6	91.5	89.4	90.1	88.2	89.1	87.4	88.7	86.7	87.0	84.0
90°	27.9	28.8	29.4	30.4	31.5	33.8	36.2	38.6	41.3	43.7	46.2
92.5°	32.1	33.4	34.8	36.0	37.3	41.1	44.8	48.6	52.5	56.2	59.9
95°	36.8	37.9	39.0	40.3	41.5	47.0	52.4	57.9	63.4	68.8	74.3
97.5°	41.6	42.3	43.0	43.7	44.5	51.0	57.4	63.8	70.2	76.7	83.0
100°	48.0	48.8	49.7	50.5	51.3	66.1	81.0	95.9	110.7	125.5	140.3
102.5°	79.3	84.4	89.6	94.8	100.1	136.0	172.0	207.9	243.8	279.7	315.5
105°	183.3	200.8	218.4	235.8	253.3	307.7	362.1	416.6	470.9	525.3	579.7
107.5°	373.2	404.0	434.8	465.6	496.4	547.6	598.7	649.8	701.1	752.2	803.2
110°	573.0	599.4	626.1	652.7	679.3	719.9	760.6	801.1	841.7	882.4	922.9



TEST NUMBER: P1444805
 CATALOG NUMBER: EHBR1-24-UNV-TA-L940-UPL24

CANDELA DISTRIBUTION (continued):

	192.5°	195°	197.5°	200°	202.5°	205°	207.5°	210°	212.5°	215°	217.5°
112.5°	689.4	705.5	721.8	737.9	754.1	783.9	813.9	843.6	873.5	903.1	933.0
115°	719.5	728.0	736.7	745.1	753.8	771.8	789.8	807.9	825.9	843.8	861.8
117.5°	698.6	701.7	704.9	707.8	710.9	720.3	729.5	738.8	748.1	757.4	766.7
120°	647.8	647.6	647.4	647.1	646.9	649.8	652.9	655.8	658.7	661.6	664.4
122.5°	590.4	588.2	586.3	584.2	582.1	581.2	580.2	579.3	578.5	577.5	576.6
125°	536.1	533.8	531.9	529.6	527.5	525.0	522.6	520.0	517.5	514.9	512.4
127.5°	489.6	487.6	485.9	483.9	482.0	479.1	476.4	473.4	470.7	467.7	464.9
130°	450.8	449.5	448.3	446.7	445.4	442.8	440.5	438.0	435.5	433.0	430.5
132.5°	422.9	421.9	421.1	420.0	419.1	416.7	414.7	412.3	410.2	407.9	405.8
135°	401.1	400.5	400.1	399.5	398.9	397.2	395.6	393.9	392.2	390.6	389.0
137.5°	383.1	382.9	382.8	382.6	382.4	381.0	379.7	378.3	377.0	375.6	374.3
140°	371.4	371.3	371.3	371.1	370.9	369.4	368.0	366.5	365.1	363.5	362.2
142.5°	359.1	359.1	359.1	359.0	358.9	357.8	356.7	355.6	354.4	353.3	352.3
145°	350.2	350.3	350.6	350.5	350.8	349.3	348.1	346.6	345.5	344.0	342.8
147.5°	341.5	341.7	341.9	342.1	342.3	341.1	340.1	338.9	337.9	336.7	335.8
150°	335.0	335.0	335.1	335.0	335.0	333.8	332.8	331.6	330.5	329.2	328.2
152.5°	328.6	328.8	328.9	329.0	329.1	327.9	326.7	325.4	324.2	323.0	321.8
155°	323.1	323.1	323.2	323.2	323.2	322.1	321.0	319.7	318.6	317.5	316.4
157.5°	318.3	318.3	318.5	318.6	318.7	317.7	316.8	315.7	314.8	313.7	312.8
160°	314.7	314.9	315.1	315.2	315.3	314.4	313.8	312.8	312.1	311.1	310.1
162.5°	312.6	312.8	312.9	313.0	313.1	312.3	311.6	310.8	310.0	308.9	308.1
165°	309.6	309.6	309.6	309.6	309.5	308.9	308.5	307.9	307.3	306.7	306.1
167.5°	309.6	309.6	309.6	309.6	309.5	309.1	308.9	308.5	308.0	307.6	307.2
170°	308.9	308.9	308.9	308.9	308.8	308.5	308.1	307.7	307.4	306.9	306.4
172.5°	308.3	308.1	307.9	307.8	307.6	307.3	307.1	306.8	306.6	306.3	306.0
175°	307.7	307.5	307.3	307.2	307.0	306.9	306.8	306.7	306.6	306.4	306.3
177.5°	309.7	309.4	308.9	308.7	308.3	308.2	308.1	308.0	307.9	307.8	307.6
180°	306.7	306.7	306.7	306.7	306.7	306.7	306.7	306.7	306.7	306.7	306.7



TEST NUMBER: P1444805
 CATALOG NUMBER: EHBR1-24-UNV-TA-L940-UPL24

CANDELA DISTRIBUTION (continued):

	220°	222.5°	225°	227.5°	230°	232.5°	235°	237.5°	240°	242.5°	245°
0°	19898.6	19898.6	19898.6	19898.6	19898.6	19898.6	19898.6	19898.6	19898.6	19898.6	19898.6
2.5°	20075.3	19951.3	19934.9	19943.6	19964.3	19972.0	19994.3	20000.5	20022.9	20028.5	20050.1
5°	20489.5	20325.6	20333.8	20373.2	20432.9	20468.4	20527.0	20557.7	20613.7	20639.1	20689.7
7.5°	20926.3	20797.6	20837.7	20904.2	20985.7	21042.2	21112.7	21158.5	21219.3	21256.9	21305.5
10°	21140.7	21105.5	21149.7	21201.9	21248.5	21284.9	21314.7	21338.7	21354.3	21369.0	21375.4
12.5°	20977.6	21032.1	21039.6	21034.5	21003.8	20980.2	20927.3	20891.4	20827.6	20788.7	20712.9
15°	20372.5	20492.5	20426.0	20325.4	20178.2	20055.5	19882.2	19753.2	19572.8	19450.3	19269.2
17.5°	19310.7	19462.2	19289.1	19056.3	18760.2	18506.9	18191.5	17941.1	17627.5	17399.3	17106.7
20°	17816.0	17957.5	17648.7	17262.8	16804.8	16419.3	15964.8	15602.1	15179.7	14865.4	14486.3
22.5°	15954.8	16055.6	15620.6	15100.5	14516.9	14035.3	13491.8	13057.0	12574.9	12215.7	11811.3
25°	13895.8	13923.0	13401.2	12801.9	12151.5	11610.4	11030.0	10572.9	10081.2	9717.2	9320.4
27.5°	11817.6	11777.7	11213.7	10578.3	9894.2	9331.6	8765.7	8337.3	7906.7	7578.8	7236.8
30°	9856.1	9759.5	9173.8	8520.7	7856.7	7352.5	6882.6	6538.6	6196.1	5935.9	5661.4
32.5°	8057.3	7921.0	7351.0	6739.2	6179.5	5790.5	5442.0	5181.7	4905.1	4685.3	4455.0
35°	6464.1	6318.9	5813.9	5295.2	4871.7	4584.8	4311.0	4097.5	3862.6	3677.1	3477.2
37.5°	5096.8	4977.8	4554.7	4146.6	3826.2	3603.9	3379.5	3205.0	3010.9	2929.4	2715.7
40°	3934.7	3851.5	3520.8	3219.9	2979.3	2874.9	2647.2	2484.0	2339.0	2219.4	2103.6
42.5°	3069.1	3039.7	2717.8	2483.1	2313.7	2182.2	2055.2	1952.3	1851.9	1769.5	1691.6
45°	2252.3	2229.0	2086.0	1950.6	1835.2	1743.2	1657.5	1586.6	1521.0	1466.7	1417.2
47.5°	1753.8	1746.4	1664.1	1580.1	1507.4	1448.3	1392.6	1345.6	1302.1	1265.8	1254.0
50°	1426.4	1425.5	1377.3	1325.4	1273.6	1239.5	1203.9	1176.1	1148.2	1126.5	1103.4
52.5°	1212.1	1206.8	1174.2	1142.2	1111.5	1089.0	1066.3	1048.6	1030.0	1016.6	1002.3
55°	1043.4	1048.9	1030.1	1011.0	991.7	977.8	961.9	950.2	937.4	928.9	920.4
57.5°	926.3	933.6	923.7	912.9	901.2	892.1	881.1	873.0	864.5	859.1	854.0
60°	841.2	849.1	845.1	839.7	832.4	827.0	820.0	815.5	810.1	807.0	804.2
62.5°	768.9	778.9	777.5	774.8	770.2	767.2	763.4	761.3	757.7	756.4	755.1
65°	696.8	708.0	707.8	706.5	704.0	703.0	700.7	700.2	698.4	699.1	699.0
67.5°	640.0	649.8	652.0	653.5	653.4	654.0	653.7	654.8	654.8	656.2	657.0
70°	599.1	605.9	607.5	609.1	609.6	610.9	610.9	611.7	611.5	612.7	612.8
72.5°	557.8	566.6	568.3	569.6	569.6	570.9	570.2	570.0	568.2	567.8	566.6
75°	506.3	517.7	520.2	521.8	522.1	523.1	521.6	520.7	517.7	516.5	514.5
77.5°	452.5	464.4	466.2	466.8	465.8	466.0	462.7	460.5	456.8	455.2	453.2
80°	382.5	400.0	401.4	400.3	397.5	397.2	394.0	391.9	387.4	385.9	384.1
82.5°	291.0	311.5	314.4	315.7	313.5	314.1	311.0	309.8	305.7	304.9	302.2
85°	183.8	204.3	207.7	207.2	205.0	204.4	202.6	203.3	202.9	203.9	204.6
87.5°	84.4	104.3	109.1	107.5	107.3	105.9	102.8	103.9	105.8	107.0	107.1
90°	48.6	57.0	59.3	57.8	54.2	52.4	49.0	47.4	44.4	42.9	39.9
92.5°	63.7	67.5	71.3	67.9	64.6	61.2	57.9	54.3	51.1	47.6	44.3
95°	79.7	85.0	90.5	86.0	81.4	77.0	72.5	67.9	63.4	59.0	54.5
97.5°	89.4	95.8	102.1	97.6	93.2	88.6	84.1	79.7	75.2	70.6	66.1
100°	155.2	169.7	184.5	171.7	158.9	146.2	133.4	120.6	107.9	95.1	82.4
102.5°	351.4	387.2	423.0	390.7	358.4	326.3	294.1	261.8	229.7	197.3	165.1
105°	634.0	688.1	742.3	693.1	643.9	594.7	545.5	496.2	447.1	397.8	348.7
107.5°	854.3	904.9	955.9	911.3	866.9	822.5	777.9	733.4	688.9	644.4	600.0
110°	963.5	1003.4	1043.8	1013.9	984.0	954.1	924.3	894.4	864.6	834.8	805.0



TEST NUMBER: P1444805
 CATALOG NUMBER: EHBR1-24-UNV-TA-L940-UPL24

CANDELA DISTRIBUTION (continued):

	220°	222.5°	225°	227.5°	230°	232.5°	235°	237.5°	240°	242.5°	245°
112.5°	962.7	991.6	1021.1	1003.5	986.1	968.6	951.2	933.6	916.3	898.9	881.5
115°	879.7	896.6	914.2	907.1	900.3	893.4	886.5	879.7	872.8	865.9	859.2
117.5°	775.9	783.8	792.6	791.3	790.1	788.7	787.5	786.2	785.1	783.9	782.8
120°	667.3	668.7	671.3	672.1	673.0	673.9	674.8	675.7	676.7	677.6	678.6
122.5°	575.6	573.1	571.7	572.4	573.2	574.0	574.8	575.8	576.7	577.5	578.5
125°	509.8	505.7	502.5	501.3	500.2	499.0	497.8	496.5	495.4	494.3	493.2
127.5°	462.0	457.3	454.0	451.2	448.4	445.6	442.8	439.9	437.3	434.4	431.9
130°	428.1	423.7	420.7	417.2	413.7	410.2	406.8	403.2	399.7	396.2	392.8
132.5°	403.5	399.3	396.6	393.2	390.0	386.4	383.3	379.7	376.5	372.9	369.8
135°	387.3	383.5	381.3	378.2	375.4	372.2	369.2	366.0	363.1	359.9	357.0
137.5°	372.9	369.3	367.4	364.9	362.7	360.2	357.8	355.2	352.9	350.2	348.0
140°	360.6	356.8	354.9	353.5	352.3	350.7	349.4	348.0	346.6	345.2	343.7
142.5°	351.1	347.4	345.8	344.9	344.1	343.2	342.5	341.5	340.7	339.6	338.7
145°	341.4	337.3	335.4	335.2	335.3	335.2	335.1	335.0	334.9	334.7	334.6
147.5°	334.6	330.4	328.6	328.8	329.0	329.1	329.3	329.4	329.6	329.7	329.9
150°	326.9	322.3	320.1	320.5	320.9	321.2	321.7	322.0	322.4	322.8	323.2
152.5°	320.5	314.8	312.5	312.8	313.4	313.8	314.2	314.7	315.3	315.8	316.3
155°	315.0	308.9	306.4	306.5	306.7	306.9	307.1	307.3	307.6	307.9	308.3
157.5°	311.5	305.3	302.9	302.8	302.8	302.9	303.0	303.2	303.3	303.4	303.6
160°	309.3	303.1	300.7	300.5	300.6	300.6	300.6	300.6	300.8	300.9	301.2
162.5°	307.2	301.0	298.8	298.6	298.6	298.5	298.6	298.5	298.7	298.7	299.0
165°	305.5	300.2	298.2	298.2	298.3	298.4	298.5	298.7	298.9	299.1	299.3
167.5°	306.6	301.9	300.5	300.2	300.0	299.7	299.7	299.4	299.4	299.3	299.3
170°	306.0	302.2	300.8	300.8	301.0	300.9	300.9	301.0	301.1	301.0	301.2
172.5°	305.7	303.0	301.9	302.2	302.5	302.7	303.0	303.2	303.4	303.7	304.0
175°	306.1	304.6	304.1	304.1	304.2	304.4	304.5	304.6	304.7	304.9	305.2
177.5°	307.6	307.1	306.8	306.8	306.8	306.8	306.8	306.8	306.8	306.9	306.9
180°	306.7	306.7	306.7	306.7	306.7	306.7	306.7	306.7	306.7	306.7	306.7



TEST NUMBER: P1444805
 CATALOG NUMBER: EHBR1-24-UNV-TA-L940-UPL24

CANDELA DISTRIBUTION (continued):

	247.5°	250°	252.5°	255°	257.5°	260°	262.5°	265°	267.5°	270°	272.5°
0°	19898.6	19898.6	19898.6	19898.6	19898.6	19898.6	19898.6	19898.6	19898.6	19898.6	19898.6
2.5°	20054.1	20077.5	20075.8	20097.6	20096.5	20117.0	20112.9	20130.7	20126.6	20141.8	20133.0
5°	20712.0	20756.4	20771.1	20811.3	20819.6	20855.4	20856.2	20884.8	20881.3	20903.6	20891.8
7.5°	21334.2	21375.8	21395.4	21426.6	21442.2	21468.0	21478.2	21499.4	21504.4	21517.0	21516.6
10°	21386.8	21386.6	21396.4	21392.0	21400.7	21395.7	21406.3	21402.5	21418.2	21414.2	21426.0
12.5°	20680.1	20610.0	20584.4	20521.5	20507.7	20453.5	20457.4	20422.8	20439.5	20418.1	20454.5
15°	19161.4	18998.8	18918.4	18776.9	18732.5	18620.7	18611.7	18537.4	18557.4	18518.6	18575.4
17.5°	16917.3	16661.2	16520.6	16314.0	16232.1	16073.9	16042.2	15946.6	15961.4	15913.3	15981.8
20°	14241.6	13932.1	13754.8	13515.9	13409.4	13220.9	13170.9	13063.9	13077.3	13029.4	13107.0
22.5°	11535.4	11211.4	11011.3	10760.9	10624.9	10447.6	10394.4	10287.0	10293.0	10248.1	10322.7
25°	9048.5	8737.9	8543.7	8316.1	8198.1	8035.6	7979.7	7883.2	7888.7	7851.6	7918.5
27.5°	6999.6	6744.8	6582.3	6391.6	6285.8	6152.2	6097.7	6016.6	6016.3	5989.1	6045.1
30°	5469.9	5257.2	5111.2	4945.3	4845.9	4725.2	4672.6	4600.0	4596.8	4577.5	4622.0
32.5°	4282.8	4093.7	3960.5	3814.4	3725.2	3621.7	3571.8	3513.5	3508.2	3490.7	3527.2
35°	3329.3	3170.0	3055.5	2932.5	2941.6	2789.0	2814.3	2695.7	2663.6	2656.6	2683.7
37.5°	2573.2	2449.8	2356.8	2264.6	2202.3	2137.8	2103.0	2071.8	2068.3	2065.3	2084.3
40°	2014.1	1927.8	1860.1	1797.0	1754.0	1714.6	1692.9	1675.8	1671.7	1669.4	1680.9
42.5°	1630.1	1571.9	1528.3	1489.7	1463.6	1442.2	1430.3	1420.8	1417.6	1417.6	1424.4
45°	1377.3	1341.8	1313.8	1289.9	1273.2	1280.5	1258.9	1270.2	1255.3	1270.8	1260.5
47.5°	1212.8	1182.7	1165.3	1148.3	1138.3	1130.2	1130.5	1130.6	1133.8	1134.3	1137.6
50°	1086.0	1068.6	1056.5	1045.7	1040.5	1036.2	1037.6	1038.7	1041.9	1042.0	1044.5
52.5°	992.1	980.7	973.4	966.7	964.3	961.9	962.9	962.5	963.9	963.1	965.1
55°	915.7	910.3	908.1	905.6	905.9	905.3	905.7	903.2	901.7	900.0	901.6
57.5°	853.0	852.3	853.9	854.9	857.8	858.8	859.4	856.6	853.9	851.5	852.9
60°	804.8	805.9	809.7	812.9	817.0	818.9	820.0	818.5	816.5	814.5	815.7
62.5°	757.1	758.9	763.5	766.9	772.0	774.6	777.5	777.6	778.3	777.6	778.4
65°	701.8	704.0	708.1	711.0	715.7	718.0	720.9	721.5	723.1	722.7	724.1
67.5°	659.7	661.8	665.3	668.0	672.1	674.5	677.0	677.2	677.8	677.7	679.0
70°	614.9	615.9	619.0	621.3	625.4	627.8	630.8	631.7	633.5	633.9	635.3
72.5°	567.1	566.6	568.5	569.5	572.7	574.5	578.4	580.4	583.5	584.3	585.4
75°	515.0	514.6	516.8	517.7	520.3	522.3	526.5	529.2	534.0	536.0	535.5
77.5°	454.8	455.9	460.0	462.3	465.8	468.2	473.6	478.0	486.8	490.6	486.7
80°	387.4	388.5	392.8	394.9	399.6	402.5	408.6	413.7	421.6	423.3	421.1
82.5°	304.6	304.8	308.7	310.3	316.4	320.8	328.5	332.5	337.3	336.7	336.0
85°	207.7	210.5	215.3	220.1	227.4	234.5	241.9	247.8	243.6	250.3	242.8
87.5°	111.0	110.7	117.2	116.2	126.5	132.5	138.8	141.8	145.2	144.5	144.6
90°	38.6	36.6	36.2	34.1	34.2	32.0	32.6	30.5	31.5	29.0	32.8
92.5°	40.9	39.2	37.3	35.6	33.6	32.0	30.0	28.2	26.4	24.6	26.4
95°	50.0	48.4	46.7	44.9	43.2	41.6	39.9	38.2	36.5	34.8	37.0
97.5°	61.7	60.7	59.7	58.7	57.8	56.7	55.8	54.8	53.8	52.8	54.2
100°	69.6	69.6	69.6	69.6	69.5	69.5	69.5	69.5	69.5	69.5	70.6
102.5°	132.9	129.6	126.4	123.2	120.0	116.7	113.6	110.3	107.1	103.9	108.6
105°	299.5	286.9	274.3	261.6	249.0	236.5	223.9	211.2	198.6	186.0	199.1
107.5°	555.6	532.6	509.6	486.6	463.6	440.7	417.7	394.7	371.8	348.9	369.5
110°	775.2	750.9	726.4	702.1	677.7	653.2	628.9	604.5	580.1	555.8	575.4



TEST NUMBER: P1444805
 CATALOG NUMBER: EHBR1-24-UNV-TA-L940-UPL24

CANDELA DISTRIBUTION (continued):

	247.5°	250°	252.5°	255°	257.5°	260°	262.5°	265°	267.5°	270°	272.5°
112.5°	864.1	848.3	832.5	816.7	800.9	785.3	769.6	753.9	738.2	722.6	732.1
115°	852.3	844.7	837.3	829.7	822.3	814.7	807.3	799.8	792.5	785.0	785.6
117.5°	781.7	779.0	776.5	773.9	771.5	769.0	766.6	764.1	761.8	759.4	754.1
120°	679.7	680.5	681.1	682.0	682.8	683.7	684.4	685.4	686.3	687.4	680.2
122.5°	579.4	581.2	582.9	584.8	586.8	588.6	590.6	592.6	594.8	596.8	589.6
125°	492.1	493.9	495.5	497.4	499.1	501.1	503.0	505.1	507.1	509.3	503.3
127.5°	429.1	429.8	430.1	430.9	431.4	432.3	433.1	434.1	435.0	436.1	432.3
130°	389.3	388.6	387.8	387.2	386.4	386.0	385.6	385.1	384.8	384.6	382.9
132.5°	366.3	364.7	363.1	361.5	360.0	358.7	357.3	356.2	355.0	353.9	353.5
135°	353.7	351.6	349.4	347.3	345.2	343.3	341.4	339.7	337.9	336.3	336.6
137.5°	345.5	343.3	341.0	338.9	336.9	335.0	333.1	331.3	329.6	328.0	328.6
140°	342.3	340.1	337.9	335.9	333.9	331.9	330.1	328.4	326.5	325.1	325.5
142.5°	337.8	336.0	333.9	332.1	330.2	328.5	326.8	325.3	323.6	322.3	322.7
145°	334.6	333.1	331.6	330.2	328.9	327.7	326.3	325.2	324.1	323.2	323.5
147.5°	330.0	329.0	327.8	326.8	325.6	324.7	323.7	323.0	322.2	321.4	321.5
150°	323.6	322.9	322.2	321.5	320.9	320.3	319.6	319.2	318.6	318.2	318.2
152.5°	316.8	316.2	315.5	314.9	314.3	313.8	313.2	312.8	312.4	311.9	311.9
155°	308.6	308.3	308.0	307.8	307.5	307.4	307.2	307.2	307.0	306.9	307.0
157.5°	303.8	303.8	303.7	303.7	303.7	303.7	303.6	303.8	303.7	303.9	304.0
160°	301.5	301.3	301.1	301.0	300.9	300.7	300.7	300.6	300.6	300.5	300.9
162.5°	299.1	299.2	299.3	299.5	299.7	299.9	300.1	300.4	300.5	300.8	301.0
165°	299.6	299.6	299.5	299.5	299.5	299.6	299.5	299.7	299.7	299.9	300.2
167.5°	299.2	299.4	299.5	299.7	299.9	300.2	300.5	300.7	301.1	301.5	301.9
170°	301.2	301.2	301.2	301.2	301.2	301.3	301.4	301.5	301.6	301.8	302.0
172.5°	304.2	304.2	304.1	304.2	304.1	304.2	304.2	304.3	304.3	304.4	304.6
175°	305.2	305.5	305.7	305.8	306.0	306.0	306.2	306.3	306.5	306.6	306.6
177.5°	306.9	307.0	307.0	307.0	307.0	307.1	307.1	307.1	307.1	307.0	307.1
180°	306.7	306.7	306.7	306.7	306.7	306.7	306.7	306.7	306.7	306.7	306.7



TEST NUMBER: P1444805
 CATALOG NUMBER: EHBR1-24-UNV-TA-L940-UPL24

CANDELA DISTRIBUTION (continued):

	275°	277.5°	280°	282.5°	285°	287.5°	290°	292.5°	295°	297.5°	300°
0°	19898.6	19898.6	19898.6	19898.6	19898.6	19898.6	19898.6	19898.6	19898.6	19898.6	19898.6
2.5°	20147.8	20137.6	20148.0	20137.5	20148.0	20135.5	20143.9	20130.3	20133.8	20119.7	20123.4
5°	20909.6	20893.5	20902.0	20881.2	20883.4	20855.4	20855.0	20822.6	20814.0	20777.0	20760.8
7.5°	21525.6	21520.4	21523.2	21509.8	21508.3	21489.2	21480.2	21453.4	21436.5	21402.5	21379.2
10°	21428.0	21443.8	21447.8	21463.8	21467.2	21483.0	21486.4	21502.2	21505.5	21517.2	21517.4
12.5°	20452.8	20506.1	20518.8	20584.7	20612.4	20687.7	20728.2	20811.3	20860.6	20943.4	20994.3
15°	18573.8	18666.1	18702.9	18831.5	18902.7	19052.8	19147.2	19319.5	19441.2	19624.4	19755.0
17.5°	15987.9	16116.8	16175.0	16349.4	16463.2	16684.8	16844.5	17107.4	17308.8	17600.9	17832.4
20°	13120.3	13263.6	13342.6	13541.6	13675.8	13934.7	14134.2	14457.2	14726.6	15096.9	15413.4
22.5°	10346.1	10482.4	10570.1	10772.5	10923.7	11193.8	11416.7	11757.6	12059.5	12476.7	12856.2
25°	7943.9	8068.8	8148.1	8331.1	8473.1	8721.3	8934.1	9262.0	9557.4	9975.9	10365.1
27.5°	6072.9	6177.6	6254.0	6410.1	6535.4	6745.9	6928.6	7199.7	7454.2	7816.2	8162.8
30°	4649.4	4742.2	4816.5	4952.4	5068.5	5250.9	5411.7	5639.4	5850.0	6138.1	6413.8
32.5°	3552.9	3632.8	3699.0	3818.0	3923.3	4087.6	4232.5	4432.0	4612.8	4857.1	5084.0
35°	2708.9	2866.1	2854.9	3019.1	3045.5	3163.4	3292.6	3467.1	3627.3	3834.9	4028.1
37.5°	2102.6	2146.8	2194.1	2266.7	2342.9	2450.2	2559.4	2772.6	2850.7	3007.7	3167.6
40°	1695.5	1725.4	1756.6	1805.7	1859.1	1934.7	2014.1	2115.9	2220.1	2347.4	2477.3
42.5°	1433.4	1450.3	1470.2	1499.0	1531.9	1579.9	1633.1	1702.0	1774.5	1864.1	1955.5
45°	1280.6	1272.6	1278.6	1294.1	1313.9	1343.0	1376.6	1419.3	1466.4	1524.5	1586.3
47.5°	1138.3	1141.5	1143.3	1151.7	1162.3	1181.9	1202.2	1231.2	1287.2	1304.2	1337.9
50°	1044.3	1045.8	1045.3	1049.6	1054.9	1067.7	1080.8	1100.5	1120.0	1146.0	1170.8
52.5°	965.5	967.6	967.3	970.1	973.0	981.0	989.4	1003.3	1016.1	1032.6	1046.8
55°	903.1	906.2	907.4	909.8	911.1	915.3	918.7	925.3	930.7	940.1	948.8
57.5°	855.3	859.4	861.4	862.1	860.5	860.3	859.2	860.6	861.7	866.7	871.6
60°	817.6	821.0	821.4	821.0	817.9	815.7	812.1	811.0	810.4	812.9	815.5
62.5°	778.2	779.3	778.6	777.6	774.0	771.9	768.2	766.9	765.6	767.3	768.7
65°	723.6	724.6	723.6	723.1	719.9	718.1	715.0	714.0	712.2	712.7	712.4
67.5°	679.3	680.3	679.5	678.7	676.5	675.4	673.1	671.7	669.6	668.7	667.2
70°	635.1	635.9	634.6	633.9	631.4	630.4	628.2	627.8	626.1	625.8	624.0
72.5°	584.3	584.3	582.6	582.1	580.2	580.1	579.3	580.1	580.0	580.9	580.5
75°	532.3	531.6	529.4	529.0	527.6	528.2	527.3	528.5	528.7	530.6	530.9
77.5°	480.3	477.5	473.3	471.3	468.5	468.2	466.6	467.6	467.2	469.5	470.4
80°	414.5	411.1	405.7	403.2	399.9	399.3	397.9	399.3	398.6	401.2	403.0
82.5°	330.9	328.0	322.4	320.4	316.5	316.9	315.3	316.9	316.7	320.5	322.7
85°	244.7	242.9	237.1	232.0	226.3	223.0	219.8	219.2	218.2	219.8	221.1
87.5°	141.3	139.6	135.1	132.2	122.2	122.6	118.7	118.5	117.6	116.6	118.7
90°	32.8	36.1	36.2	39.3	39.8	43.2	43.9	47.2	47.7	51.1	52.1
92.5°	28.2	30.0	31.9	33.6	35.5	37.3	39.1	40.9	44.8	48.5	52.6
95°	39.0	41.2	43.2	45.4	47.4	49.6	51.6	53.8	59.5	65.2	71.0
97.5°	55.6	57.0	58.4	59.8	61.2	62.6	64.0	65.4	71.6	77.7	83.8
100°	71.7	72.9	74.0	75.1	76.2	77.3	78.4	79.6	91.6	103.4	115.3
102.5°	113.4	118.1	122.9	127.6	132.4	137.1	141.9	146.6	174.0	201.3	228.6
105°	212.0	225.1	238.1	251.1	264.1	277.2	290.2	303.3	347.0	390.6	434.5
107.5°	390.1	410.6	431.2	451.8	472.4	493.0	513.6	534.3	576.9	619.5	662.1
110°	595.0	614.7	634.3	654.0	673.6	693.2	712.9	732.6	758.2	783.7	809.4



TEST NUMBER: P1444805
 CATALOG NUMBER: EHBR1-24-UNV-TA-L940-UPL24

CANDELA DISTRIBUTION (continued):

	275°	277.5°	280°	282.5°	285°	287.5°	290°	292.5°	295°	297.5°	300°
112.5°	741.6	751.1	760.7	770.4	780.0	789.6	799.2	808.9	821.6	834.4	847.2
115°	786.2	786.8	787.4	788.1	788.8	789.4	790.3	791.0	795.1	799.1	803.2
117.5°	748.9	743.6	738.4	733.1	728.0	723.0	717.8	712.9	712.1	711.2	710.6
120°	673.4	666.3	659.3	652.2	645.4	638.5	631.7	624.9	621.5	618.1	614.6
122.5°	582.7	575.8	568.9	561.9	555.2	548.3	541.7	535.0	532.5	530.1	527.7
125°	497.5	491.6	485.9	480.2	474.6	469.0	463.6	458.0	457.9	457.7	457.7
127.5°	428.7	425.2	421.8	418.3	415.0	411.7	408.5	405.3	406.8	408.3	409.9
130°	381.3	379.7	378.4	376.9	375.7	374.4	373.2	372.0	374.7	377.3	380.0
132.5°	353.3	353.0	352.9	352.7	352.8	352.8	353.0	353.0	356.1	359.1	362.2
135°	337.1	337.4	338.2	338.7	339.5	340.1	341.1	341.7	344.8	347.6	350.7
137.5°	329.4	330.1	330.9	331.8	332.9	333.8	335.0	336.0	338.3	340.6	342.9
140°	326.2	326.6	327.4	328.1	329.0	329.7	330.7	331.6	333.5	335.3	337.2
142.5°	323.4	323.8	324.5	325.2	326.1	326.7	327.7	328.3	329.8	331.1	332.6
145°	323.8	324.2	324.8	325.2	325.8	326.4	327.0	327.7	328.6	329.4	330.3
147.5°	321.8	322.1	322.4	322.7	323.2	323.6	323.9	324.3	325.1	325.5	326.1
150°	318.3	318.3	318.5	318.6	318.9	319.2	319.4	319.6	320.1	320.6	321.1
152.5°	312.1	312.2	312.3	312.4	312.6	312.8	312.8	313.1	313.6	314.1	314.5
155°	307.2	307.4	307.7	308.0	308.4	308.5	308.8	309.1	309.5	309.8	310.1
157.5°	304.3	304.5	304.8	304.9	305.3	305.6	305.9	306.0	306.4	306.7	307.0
160°	301.3	301.8	302.0	302.5	303.0	303.3	303.7	304.2	304.5	304.7	305.0
162.5°	301.4	301.7	301.9	302.1	302.4	302.8	303.0	303.3	303.8	304.1	304.6
165°	300.7	301.0	301.6	301.9	302.4	302.8	303.2	303.5	303.8	304.1	304.3
167.5°	302.2	302.5	303.0	303.4	303.8	304.2	304.6	305.0	305.3	305.4	305.8
170°	302.3	302.8	303.1	303.4	303.8	304.1	304.5	304.8	305.2	305.6	306.0
172.5°	304.7	305.1	305.4	305.6	305.9	306.2	306.5	306.8	307.1	307.4	307.6
175°	306.6	306.6	306.7	306.8	306.9	306.9	306.9	307.1	307.2	307.3	307.3
177.5°	307.3	307.3	307.5	307.6	307.8	307.9	308.1	308.2	308.2	308.2	308.2
180°	306.7	306.7	306.7	306.7	306.7	306.7	306.7	306.7	306.7	306.7	306.7



TEST NUMBER: P1444805
 CATALOG NUMBER: EHBR1-24-UNV-TA-L940-UPL24

CANDELA DISTRIBUTION (continued):

	302.5°	305°	307.5°	310°	312.5°	315°	317.5°	320°	322.5°	325°	327.5°
0°	19898.6	19898.6	19898.6	19898.6	19898.6	19898.6	19898.6	19898.6	19898.6	19898.6	19898.6
2.5°	20109.3	20110.1	20093.9	20093.0	20077.8	20075.9	20061.1	20056.6	20044.5	20040.3	20028.0
5°	20719.3	20699.6	20653.9	20627.1	20582.0	20552.1	20503.3	20471.4	20424.3	20388.8	20341.4
7.5°	21336.4	21305.7	21254.5	21212.9	21150.3	21100.4	21027.1	20967.1	20887.7	20819.0	20735.7
10°	21517.4	21512.6	21499.6	21480.6	21451.4	21418.7	21368.9	21316.9	21247.3	21171.8	21079.1
12.5°	21072.1	21120.1	21185.7	21224.6	21271.9	21292.6	21312.0	21307.1	21294.3	21256.1	21202.6
15°	19944.1	20079.2	20258.2	20396.8	20556.3	20672.2	20800.3	20880.0	20959.6	20996.3	21018.9
17.5°	18149.8	18405.6	18726.4	18992.2	19299.0	19545.4	19815.4	20018.7	20227.8	20377.6	20513.1
20°	15845.0	16215.7	16669.4	17070.2	17536.3	17941.3	18385.1	18749.5	19125.2	19418.9	19697.0
22.5°	13345.1	13785.3	14333.7	14841.9	15442.7	15982.7	16591.9	17122.2	17675.7	18138.3	18585.5
25°	10886.7	11369.5	11969.3	12536.2	13216.7	13844.7	14567.3	15228.1	15943.6	16564.9	17178.6
27.5°	8642.0	9116.0	9728.3	10331.8	11051.3	11720.6	12494.7	13222.8	14037.6	14788.8	15557.5
30°	6797.0	7199.0	7748.0	8332.5	9042.3	9723.3	10505.8	11254.7	12102.2	12922.6	13788.3
32.5°	5385.1	5691.3	6123.0	6617.2	7272.1	7920.3	8665.4	9388.3	10222.9	11051.6	11952.1
35°	4276.7	4515.6	4844.7	5230.4	5784.9	6343.8	7002.8	7660.2	8438.9	9225.2	10100.4
37.5°	3372.5	3566.2	3824.0	4113.8	4558.5	5017.1	5557.5	6102.6	6779.1	7476.2	8269.4
40°	2633.5	2790.5	2991.0	3207.2	3543.0	3896.4	4314.4	4737.0	5280.6	5850.3	6506.7
42.5°	2068.8	2184.6	2326.3	2484.2	2797.5	2985.2	3268.6	3574.3	3973.9	4387.5	4881.0
45°	1661.4	1740.4	1838.7	1944.6	2090.1	2249.2	2443.3	2646.8	3026.5	3212.7	3512.9
47.5°	1387.5	1440.5	1503.0	1569.7	1655.5	1748.0	1863.2	1980.9	2133.1	2290.8	2475.8
50°	1202.9	1256.9	1278.3	1312.9	1362.5	1415.4	1480.3	1545.2	1626.8	1709.6	1804.8
52.5°	1066.0	1083.6	1107.0	1128.9	1159.7	1219.8	1239.3	1273.3	1319.0	1363.8	1413.8
55°	961.5	972.8	988.1	1001.3	1019.9	1037.7	1063.4	1085.9	1116.5	1143.4	1176.7
57.5°	880.0	887.3	897.8	906.6	918.6	928.7	943.7	955.9	973.5	988.8	1008.9
60°	820.9	825.7	832.8	838.5	846.2	851.4	858.9	864.6	873.9	881.6	892.9
62.5°	772.6	775.0	779.7	783.0	787.9	790.6	794.5	797.0	802.1	806.1	812.3
65°	714.6	715.2	718.3	719.7	723.5	724.9	728.2	729.4	733.6	736.5	742.0
67.5°	667.2	665.8	665.8	664.7	665.3	664.2	664.4	663.2	665.0	665.8	670.0
70°	623.7	621.9	621.3	619.4	618.7	616.7	616.1	614.2	614.0	613.4	614.9
72.5°	581.5	581.0	581.2	579.8	579.6	578.2	578.3	577.3	578.4	578.7	580.7
75°	532.9	533.1	534.0	532.7	533.1	532.0	532.3	531.3	531.9	531.6	533.6
77.5°	473.7	475.1	477.7	477.2	478.0	476.7	477.3	475.7	476.2	475.1	475.9
80°	407.2	410.2	413.7	413.5	415.0	414.0	415.3	413.8	414.5	412.7	412.3
82.5°	328.2	330.7	334.5	334.6	337.8	338.5	342.0	341.9	344.1	342.7	341.6
85°	224.4	226.1	229.4	231.1	234.4	236.5	240.0	241.4	238.9	243.4	239.8
87.5°	117.2	121.6	119.1	124.7	123.4	129.2	127.9	133.2	132.2	136.8	136.2
90°	56.3	57.6	62.0	63.4	68.5	70.4	71.7	69.5	70.7	68.6	69.7
92.5°	56.4	60.6	64.5	68.4	72.3	76.3	72.6	68.9	65.3	61.8	58.0
95°	76.7	82.5	88.1	93.9	99.6	105.4	99.2	93.2	87.0	80.9	74.6
97.5°	90.0	96.2	102.4	108.5	114.8	120.9	113.7	106.4	99.1	92.0	84.6
100°	127.3	139.2	151.1	163.0	175.0	186.9	173.4	159.9	146.3	132.7	119.2
102.5°	256.1	283.3	310.7	338.0	365.3	392.7	364.0	335.3	306.5	277.7	248.8
105°	478.1	521.9	565.6	609.4	653.1	697.0	650.3	603.7	556.9	510.4	463.7
107.5°	704.9	747.4	790.2	832.7	875.5	918.1	870.9	823.6	776.3	729.0	681.7
110°	835.0	860.7	886.3	912.1	937.6	963.3	928.9	894.3	859.8	825.2	790.7



TEST NUMBER: P1444805
 CATALOG NUMBER: EHBR1-24-UNV-TA-L940-UPL24

CANDELA DISTRIBUTION (continued):

	302.5°	305°	307.5°	310°	312.5°	315°	317.5°	320°	322.5°	325°	327.5°
112.5°	860.1	873.0	885.7	898.8	911.5	924.5	899.8	875.1	850.4	825.8	800.9
115°	807.3	811.4	815.5	819.7	823.7	827.9	811.2	794.5	777.9	761.3	744.5
117.5°	709.8	709.2	708.3	707.9	707.0	706.4	697.1	687.7	678.4	669.1	659.7
120°	611.2	607.7	604.3	600.9	597.5	593.9	590.0	586.2	582.1	578.2	574.1
122.5°	525.4	523.0	520.7	518.3	515.9	513.3	511.8	510.4	508.8	507.3	505.6
125°	457.6	457.5	457.4	457.3	457.3	457.1	456.2	455.5	454.6	454.0	453.1
127.5°	411.3	412.9	414.3	415.8	417.2	418.7	418.4	418.3	418.0	417.9	417.6
130°	382.6	385.3	387.9	390.5	393.0	395.7	395.0	394.7	394.2	393.8	393.2
132.5°	365.3	368.3	371.4	374.4	377.3	380.3	379.6	379.2	378.4	378.0	377.4
135°	353.5	356.4	359.2	362.2	364.9	367.7	366.9	366.3	365.5	364.9	364.1
137.5°	345.2	347.6	349.7	352.1	354.2	356.4	355.7	355.0	354.2	353.6	352.8
140°	338.9	340.7	342.5	344.3	346.0	347.8	346.9	345.9	345.0	344.1	343.0
142.5°	333.9	335.3	336.5	337.9	339.1	340.5	339.1	337.8	336.6	335.4	334.0
145°	331.2	332.1	332.9	333.7	334.5	335.3	333.7	332.4	330.7	329.4	327.8
147.5°	326.5	327.2	327.5	328.1	328.4	329.1	327.6	326.2	324.8	323.4	321.9
150°	321.5	322.1	322.4	322.8	323.3	323.7	322.2	320.7	319.2	317.7	316.3
152.5°	315.0	315.4	315.7	316.1	316.5	316.9	315.4	314.2	312.7	311.2	309.9
155°	310.2	310.6	310.8	311.1	311.2	311.4	310.1	309.1	307.8	306.7	305.4
157.5°	307.2	307.4	307.7	307.8	308.0	308.2	307.3	306.5	305.5	304.6	303.6
160°	305.2	305.5	305.7	305.9	306.0	306.1	305.4	304.7	304.0	303.2	302.3
162.5°	304.8	305.3	305.6	306.0	306.2	306.6	305.6	304.8	303.9	303.0	301.9
165°	304.6	304.7	304.9	305.2	305.2	305.5	304.9	304.3	303.6	303.1	302.4
167.5°	305.9	306.1	306.3	306.5	306.6	306.8	306.1	305.7	304.9	304.4	303.6
170°	306.2	306.4	306.9	307.1	307.3	307.5	307.1	306.6	306.0	305.6	305.0
172.5°	308.0	308.2	308.4	308.7	308.8	309.1	308.6	308.0	307.5	307.0	306.4
175°	307.3	307.3	307.5	307.5	307.5	307.6	307.3	306.8	306.4	306.0	305.6
177.5°	308.2	308.2	308.2	308.1	308.1	308.1	307.8	307.5	307.3	307.0	306.6
180°	306.7	306.7	306.7	306.7	306.7	306.7	306.7	306.7	306.7	306.7	306.7



TEST NUMBER: P1444805
 CATALOG NUMBER: EHBR1-24-UNV-TA-L940-UPL24

CANDELA DISTRIBUTION (continued):

	330°	332.5°	335°	337.5°	340°	342.5°	345°	347.5°	350°	352.5°	355°
0°	19898.6	19898.6	19898.6	19898.6	19898.6	19898.6	19898.6	19898.6	19898.6	19898.6	19898.6
2.5°	20023.7	20014.9	20009.3	20002.2	19997.8	19992.3	19988.3	19984.7	19981.9	19979.4	19977.5
5°	20305.2	20260.4	20225.7	20188.1	20157.2	20126.3	20102.6	20082.9	20069.3	20059.2	20053.1
7.5°	20663.7	20581.7	20508.9	20432.2	20363.4	20295.8	20237.6	20187.4	20149.6	20125.2	20110.4
10°	20983.8	20874.2	20765.6	20651.5	20543.3	20438.3	20341.4	20256.1	20188.6	20143.8	20117.6
12.5°	21127.3	21033.9	20923.1	20799.2	20666.5	20532.3	20401.5	20283.4	20184.4	20118.0	20079.6
15°	21000.9	20962.6	20887.4	20791.2	20665.3	20526.5	20372.9	20228.5	20095.7	20009.5	19959.6
17.5°	20589.7	20643.3	20637.5	20600.7	20510.3	20393.4	20236.9	20074.7	19908.6	19793.5	19730.6
20°	19895.9	20064.3	20149.6	20193.5	20157.9	20082.2	19940.5	19775.9	19582.2	19431.9	19340.1
22.5°	18921.0	19218.1	19403.3	19538.8	19567.5	19541.7	19416.5	19260.0	19044.1	18863.4	18727.9
25°	17665.8	18101.1	18393.8	18623.2	18712.3	18735.3	18628.8	18473.1	18232.5	18022.0	17835.9
27.5°	16187.4	16753.0	17143.8	17452.1	17591.1	17651.5	17553.5	17394.7	17110.0	16858.7	16615.6
30°	14523.1	15194.1	15664.5	16034.2	16203.7	16283.5	16179.3	16002.0	15670.8	15368.4	15062.3
32.5°	12741.6	13476.0	13988.6	14390.0	14558.1	14633.1	14496.9	14297.7	13914.8	13558.6	13201.5
35°	10876.5	11617.7	12134.7	12525.3	12666.2	12711.5	12537.2	12307.0	11882.9	11491.9	11102.6
37.5°	8973.3	9662.9	10132.8	10483.4	10570.6	10578.5	10368.6	10114.3	9668.5	9283.0	8895.4
40°	7086.7	7668.3	8047.6	8328.3	8358.5	8331.5	8103.4	7847.5	7430.4	7085.1	6744.8
42.5°	5309.5	5748.5	6019.2	6211.6	6200.1	6146.8	5937.6	5717.7	5373.5	5110.5	4842.7
45°	3787.0	4076.5	4234.8	4347.3	4311.2	4260.3	4097.5	3943.4	3709.5	3539.6	3359.7
47.5°	2630.9	2976.6	2916.4	3136.5	2946.9	3072.1	2811.3	2667.6	2543.5	2453.2	2351.5
50°	1883.5	1962.7	2001.0	2027.1	2013.2	1994.0	1947.1	1905.2	1848.6	1807.2	1759.0
52.5°	1454.6	1494.2	1515.9	1531.5	1528.5	1521.5	1501.1	1482.3	1455.8	1438.4	1417.2
55°	1232.1	1232.7	1272.5	1255.5	1280.7	1251.1	1262.8	1230.0	1235.3	1207.0	1188.1
57.5°	1023.8	1040.1	1047.4	1054.4	1052.5	1051.2	1043.3	1039.3	1030.4	1027.7	1021.4
60°	900.6	909.1	910.9	914.1	911.3	910.3	904.2	901.9	896.0	894.8	890.7
62.5°	816.1	820.4	820.4	820.4	816.9	813.5	806.6	803.0	798.0	796.8	794.4
65°	745.6	750.1	750.8	751.7	749.2	746.5	740.5	736.6	731.3	729.4	726.6
67.5°	672.8	677.6	679.2	681.7	680.2	679.6	675.5	674.0	670.5	669.7	667.2
70°	615.6	617.6	617.5	617.4	614.1	611.3	606.5	604.2	600.6	599.9	597.5
72.5°	581.6	583.0	582.2	580.9	576.7	572.4	566.8	562.7	558.0	555.0	551.7
75°	533.7	535.6	534.5	533.6	529.8	527.0	522.6	520.3	517.0	516.0	513.7
77.5°	475.0	475.9	473.9	473.7	470.9	469.1	465.7	465.1	462.7	462.7	460.5
80°	409.6	409.1	406.0	405.4	402.5	401.7	399.1	399.3	397.3	398.2	396.6
82.5°	337.0	335.2	331.1	330.0	326.6	326.4	324.6	326.1	324.9	326.6	325.6
85°	241.5	242.0	240.3	240.3	239.3	239.6	239.4	240.6	240.7	242.3	242.2
87.5°	134.6	136.6	136.2	138.0	137.9	139.9	140.6	143.5	143.8	146.6	146.6
90°	67.6	69.0	66.9	68.4	67.5	69.9	69.4	71.8	71.0	73.0	71.6
92.5°	54.4	50.8	47.2	43.5	41.6	39.7	38.2	36.1	34.4	32.4	30.6
95°	68.5	62.3	56.2	50.0	47.9	45.7	43.6	41.6	39.4	37.4	35.2
97.5°	77.3	70.1	62.8	55.5	53.7	51.9	49.9	48.2	46.3	44.5	42.7
100°	105.6	92.0	78.5	64.8	63.3	61.8	60.2	58.7	57.1	55.6	54.0
102.5°	220.1	191.4	162.5	133.7	128.2	122.8	117.3	111.7	106.3	100.8	95.3
105°	417.1	370.3	323.7	276.9	262.1	247.3	232.4	217.5	202.7	187.9	173.0
107.5°	634.4	586.9	539.5	492.1	464.8	437.3	409.9	382.3	355.1	327.5	300.1
110°	756.1	721.5	686.8	652.2	630.3	608.2	586.0	563.9	541.9	519.8	497.6



TEST NUMBER: P1444805
 CATALOG NUMBER: EHBR1-24-UNV-TA-L940-UPL24

CANDELA DISTRIBUTION (continued):

	330°	332.5°	335°	337.5°	340°	342.5°	345°	347.5°	350°	352.5°	355°
112.5°	776.2	751.6	726.7	701.8	691.9	681.9	671.9	661.8	651.8	641.6	631.7
115°	727.8	711.1	694.4	677.4	674.0	670.5	667.0	663.3	659.9	656.3	652.6
117.5°	650.4	641.0	631.6	622.1	622.6	623.2	623.8	624.4	624.8	625.2	625.7
120°	570.1	566.0	562.1	558.0	561.0	564.0	567.1	569.9	573.0	575.8	578.6
122.5°	504.1	502.4	500.9	499.2	502.9	506.6	510.2	513.7	517.2	520.6	524.1
125°	452.3	451.4	450.6	449.6	453.4	457.1	460.7	464.2	467.9	471.2	474.7
127.5°	417.5	417.2	417.0	416.6	419.4	421.8	424.5	426.9	429.5	431.7	434.0
130°	392.9	392.3	391.9	391.4	393.7	396.0	398.5	400.6	402.9	404.9	406.9
132.5°	376.9	376.2	375.6	375.0	376.9	378.3	380.1	381.5	383.1	384.3	385.7
135°	363.5	362.6	362.0	361.1	362.8	364.4	365.9	367.2	368.6	369.7	370.9
137.5°	352.1	351.3	350.5	349.7	351.1	352.5	353.8	355.1	356.3	357.5	358.4
140°	342.3	341.3	340.4	339.4	340.7	341.9	343.1	344.1	345.3	346.1	347.0
142.5°	332.8	331.4	330.3	328.9	329.8	330.6	331.6	332.3	333.2	333.8	334.4
145°	326.4	324.9	323.5	322.0	322.7	323.3	324.0	324.7	325.1	325.5	326.1
147.5°	320.6	319.1	317.6	316.1	316.8	317.2	317.6	318.0	318.5	318.8	319.1
150°	314.7	313.1	311.6	310.1	310.5	310.9	311.3	311.6	312.0	312.2	312.5
152.5°	308.3	306.9	305.4	303.9	304.3	304.6	304.8	305.0	305.3	305.5	305.7
155°	304.3	303.0	301.8	300.4	300.7	300.9	301.1	301.4	301.5	301.6	301.8
157.5°	302.7	301.6	300.7	299.6	299.7	299.7	299.8	299.6	299.7	299.6	299.6
160°	301.6	300.6	299.8	298.9	298.8	298.9	298.9	298.8	298.7	298.6	298.5
162.5°	301.0	300.0	299.1	297.9	297.9	298.0	298.0	297.8	297.8	297.7	297.7
165°	301.8	301.0	300.3	299.4	299.3	299.2	299.2	298.9	298.7	298.4	298.2
167.5°	303.0	302.2	301.5	300.5	300.7	300.7	300.7	300.6	300.6	300.5	300.5
170°	304.5	303.8	303.3	302.6	302.5	302.4	302.3	302.1	301.9	301.8	301.6
172.5°	305.8	305.2	304.6	303.9	303.9	303.8	303.7	303.6	303.3	303.3	303.2
175°	305.0	304.6	304.0	303.6	303.5	303.5	303.4	303.3	303.2	303.2	303.0
177.5°	306.3	306.0	305.7	305.4	305.3	305.3	305.2	305.1	305.1	305.1	305.0
180°	306.7	306.7	306.7	306.7	306.7	306.7	306.7	306.7	306.7	306.7	306.7



TEST NUMBER: P1444805
 CATALOG NUMBER: EHBR1-24-UNV-TA-L940-UPL24

CANDELA DISTRIBUTION (continued):

	357.5°	360°
0°	19898.6	19898.6
2.5°	19975.7	19974.7
5°	20049.9	20048.7
7.5°	20106.4	20106.1
10°	20113.1	20116.6
12.5°	20073.0	20075.8
15°	19955.8	19961.3
17.5°	19731.7	19738.9
20°	19345.7	19353.2
22.5°	18720.7	18723.7
25°	17811.9	17799.0
27.5°	16572.9	16550.8
30°	14997.9	14976.5
32.5°	13120.1	13106.7
35°	11006.4	10997.9
37.5°	8780.9	8763.6
40°	6620.4	6570.1
42.5°	4725.5	4637.2
45°	3265.7	3161.1
47.5°	2279.8	2215.2
50°	1728.0	1707.1
52.5°	1408.1	1403.2
55°	1188.0	1185.9
57.5°	1022.8	1022.0
60°	892.9	892.6
62.5°	796.0	796.4
65°	727.8	728.0
67.5°	667.8	667.3
70°	598.4	597.8
72.5°	550.6	549.8
75°	513.7	513.2
77.5°	461.3	460.4
80°	397.6	396.6
82.5°	327.1	325.9
85°	244.0	244.0
87.5°	149.2	149.2
90°	73.4	71.6
92.5°	29.0	27.3
95°	33.2	31.0
97.5°	40.9	39.0
100°	52.5	51.0
102.5°	89.9	84.4
105°	158.2	143.4
107.5°	272.6	245.2
110°	475.5	453.4



TEST NUMBER: P1444805
CATALOG NUMBER: EHBR1-24-UNV-TA-L940-UPL24

CANDELA DISTRIBUTION (continued):

	357.5°	360°
112.5°	621.5	611.4
115°	648.8	645.2
117.5°	626.1	626.4
120°	581.3	584.0
122.5°	527.2	530.5
125°	477.8	481.2
127.5°	436.1	438.2
130°	408.5	410.5
132.5°	386.7	387.8
135°	371.8	372.8
137.5°	359.1	360.0
140°	347.7	348.3
142.5°	334.8	335.3
145°	326.4	326.7
147.5°	319.0	319.3
150°	312.6	312.7
152.5°	305.7	305.9
155°	301.8	301.8
157.5°	299.3	299.2
160°	298.3	298.1
162.5°	297.4	297.3
165°	297.8	297.6
167.5°	300.2	300.3
170°	301.3	301.2
172.5°	303.0	302.8
175°	302.9	302.9
177.5°	305.0	304.8
180°	306.7	306.7

LM-79-2019: Approved Method: Electrical and Photometric Measurements of Solid-
State Lighting Products

Report Prepared for

Cooper Lighting Solutions

Metalux

Report Number: SP1-2506-472-7

Test Date: 08/04/2025

Luminaire Tested: EHBR-60-L940-N

Data in this report applies to families of products including EHBR-60-L940-N

Test Information

Test Method: LM-79-2019
 Report Number: SP1-2506-472-7
 Test Lab: COOPER LIGHTING SOLUTIONS
 Photometer: SP1 - 76IN SPHERE
 Measurement Geometry: 4π
 Issue Date: 08/05/2025
 Manufacturer: COOPER LIGHTING SOLUTIONS
 Product Line: Metalux
 Catalog Number: **EHBR-60-L940-N**
 Description: Elevate Round Highbay at, 60000 lumens, 4000K 90CRI LEDs with N lens

Spectral Parameters

CCT (K): 3963
 CIE u': 0.2267
 CIE v': 0.5003
 Duv: -0.0016
 CIE x: 0.3810
 CIE y: 0.3738
 CIE z: 0.2453
 Peak Wavelength (nm): 630
 Dominant Wavelength (nm): 580
 Purity: 26.49712
 Rf: 90.7
 Rg: 101

CRI (Ra):	93.4		
R1:	95.2	R9:	66.4
R2:	95.1	R10:	86.6
R3:	93.3	R11:	94.4
R4:	94.5	R12:	75.4
R5:	94.2	R13:	95.0
R6:	92.9	R14:	95.4
R7:	94.0	R15:	92.8
R8:	87.7		



Test Conditions

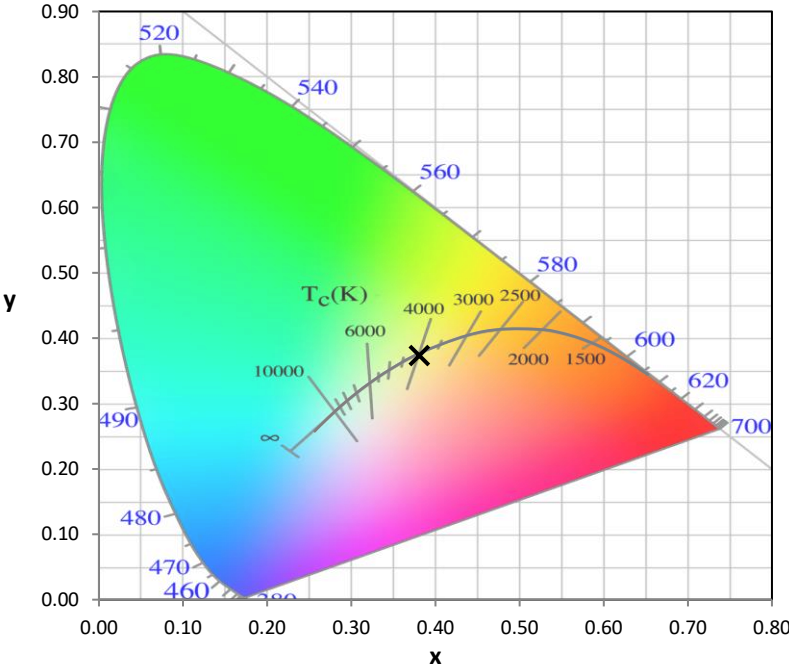
Stabilization Time: 44M
 Operation Time: 1H 44M
 Sphere Temperature (°C): 25.0

REPORT NUMBER: SP1-2506-472-7

Measurement and Test Equipment			
Instrument	Identification Number	Calibration Date	Calibration Due Date
Photometer	76INCH SPHERE IN0058	6/16/2025	12/16/2025
Power Meter	XITRON INXT2011004	1/21/2025	1/21/2026
AC Power Source	CHROMA 61603 IN0063	10/22/2024	10/22/2025
DC Power Source	AGILENT E3634A IN0208	10/22/2024	10/22/2025
Sphere Thermometer	ONSET IN0085	10/22/2024	10/22/2025
Room Thermometer	ONSET IN0046	10/22/2024	10/22/2025

REPORT NUMBER: SP1-2506-472-7

CIE 1931 Chromaticity Diagram



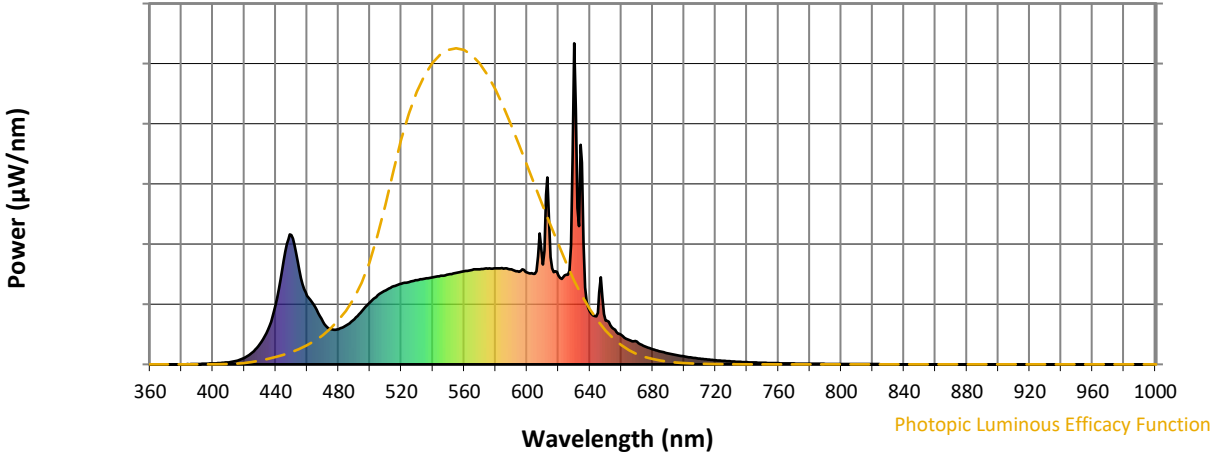
CIE 1931 Chromaticity Diagram with 2017 ANSI 7-Step and 4-Step Quadrangles



Point lies inside the ANSI 4000K 4-step quadrangle

REPORT NUMBER: SP1-2506-472-7

Photopic Flux vs. Wavelength



Photopic Lumens: NR

λ (nm)	Power W [^] /nm	Lumens (ϕ /nm)	λ (nm)	Power W [^] /nm	Lumens (ϕ /nm)	λ (nm)	Power W [^] /nm	Lumens (ϕ /nm)	λ (nm)	Power W [^] /nm	Lumens (ϕ /nm)	λ (nm)	Power W [^] /nm	Lumens (ϕ /nm)
360	0	NR	490	141	NR	620	276	NR	750	5	NR	880	0	NR
365	0	NR	495	167	NR	625	279	NR	755	4	NR	885	0	NR
370	0	NR	500	193	NR	630	1000	NR	760	4	NR	890	0	NR
375	0	NR	505	215	NR	635	628	NR	765	3	NR	895	0	NR
380	0	NR	510	230	NR	640	164	NR	770	3	NR	900	0	NR
385	0	NR	515	243	NR	645	161	NR	775	2	NR	905	0	NR
390	1	NR	520	251	NR	650	137	NR	780	2	NR	910	0	NR
395	2	NR	525	256	NR	655	111	NR	785	2	NR	915	0	NR
400	3	NR	530	262	NR	660	92	NR	790	1	NR	920	0	NR
405	4	NR	535	267	NR	665	76	NR	795	1	NR	925	0	NR
410	6	NR	540	271	NR	670	71	NR	800	1	NR	930	0	NR
415	11	NR	545	276	NR	675	56	NR	805	1	NR	935	0	NR
420	20	NR	550	280	NR	680	47	NR	810	1	NR	940	0	NR
425	37	NR	555	285	NR	685	40	NR	815	1	NR	945	0	NR
430	63	NR	560	290	NR	690	34	NR	820	1	NR	950	0	NR
435	108	NR	565	294	NR	695	29	NR	825	1	NR	955	0	NR
440	186	NR	570	296	NR	700	25	NR	830	0	NR	960	0	NR
445	323	NR	575	298	NR	705	21	NR	835	0	NR	965	0	NR
450	403	NR	580	299	NR	710	18	NR	840	0	NR	970	0	NR
455	293	NR	585	298	NR	715	15	NR	845	0	NR	975	0	NR
460	214	NR	590	296	NR	720	13	NR	850	0	NR	980	0	NR
465	180	NR	595	288	NR	725	11	NR	855	0	NR	985	0	NR
470	132	NR	600	286	NR	730	9	NR	860	0	NR	990	0	NR
475	109	NR	605	282	NR	735	8	NR	865	0	NR	995	0	NR
480	110	NR	610	311	NR	740	7	NR	870	0	NR	1000	0	NR
485	121	NR	615	334	NR	745	6	NR	875	0	NR			

REPORT NUMBER: SP1-2506-472-7

Scotopic Flux vs. Wavelength



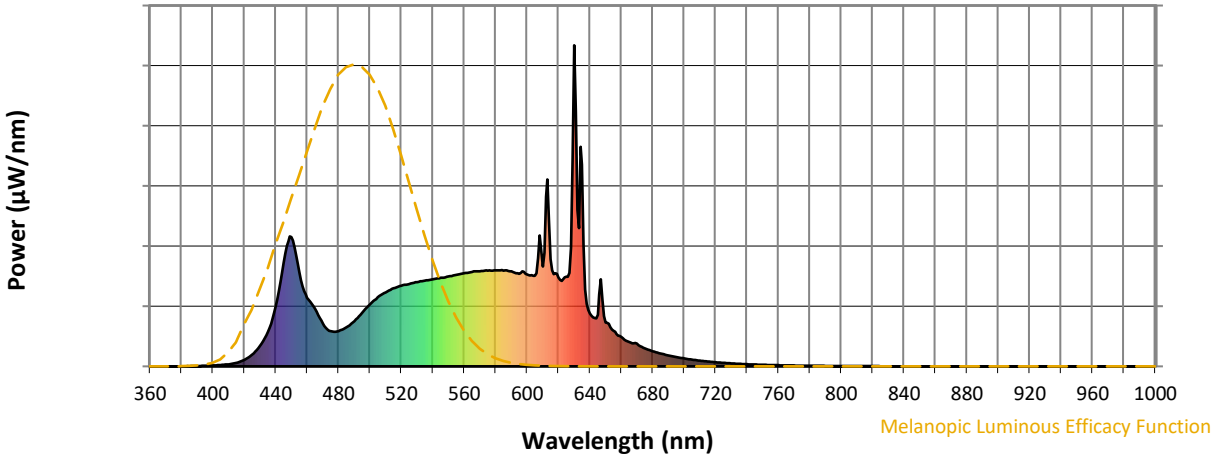
Scotopic Lumens: NR

S/P: 1.76

λ (nm)	Power W [^] /nm	Lumens (φ/nm)	λ (nm)	Power W [^] /nm	Lumens (φ/nm)	λ (nm)	Power W [^] /nm	Lumens (φ/nm)	λ (nm)	Power W [^] /nm	Lumens (φ/nm)	λ (nm)	Power W [^] /nm	Lumens (φ/nm)
360	0	NR	490	141	NR	620	276	NR	750	5	NR	880	0	NR
365	0	NR	495	167	NR	625	279	NR	755	4	NR	885	0	NR
370	0	NR	500	193	NR	630	1000	NR	760	4	NR	890	0	NR
375	0	NR	505	215	NR	635	628	NR	765	3	NR	895	0	NR
380	0	NR	510	230	NR	640	164	NR	770	3	NR	900	0	NR
385	0	NR	515	243	NR	645	161	NR	775	2	NR	905	0	NR
390	1	NR	520	251	NR	650	137	NR	780	2	NR	910	0	NR
395	2	NR	525	256	NR	655	111	NR	785	2	NR	915	0	NR
400	3	NR	530	262	NR	660	92	NR	790	1	NR	920	0	NR
405	4	NR	535	267	NR	665	76	NR	795	1	NR	925	0	NR
410	6	NR	540	271	NR	670	71	NR	800	1	NR	930	0	NR
415	11	NR	545	276	NR	675	56	NR	805	1	NR	935	0	NR
420	20	NR	550	280	NR	680	47	NR	810	1	NR	940	0	NR
425	37	NR	555	285	NR	685	40	NR	815	1	NR	945	0	NR
430	63	NR	560	290	NR	690	34	NR	820	1	NR	950	0	NR
435	108	NR	565	294	NR	695	29	NR	825	1	NR	955	0	NR
440	186	NR	570	296	NR	700	25	NR	830	0	NR	960	0	NR
445	323	NR	575	298	NR	705	21	NR	835	0	NR	965	0	NR
450	403	NR	580	299	NR	710	18	NR	840	0	NR	970	0	NR
455	293	NR	585	298	NR	715	15	NR	845	0	NR	975	0	NR
460	214	NR	590	296	NR	720	13	NR	850	0	NR	980	0	NR
465	180	NR	595	288	NR	725	11	NR	855	0	NR	985	0	NR
470	132	NR	600	286	NR	730	9	NR	860	0	NR	990	0	NR
475	109	NR	605	282	NR	735	8	NR	865	0	NR	995	0	NR
480	110	NR	610	311	NR	740	7	NR	870	0	NR	1000	0	NR
485	121	NR	615	334	NR	745	6	NR	875	0	NR			

REPORT NUMBER: SP1-2506-472-7

Melanopic Flux vs. Wavelength



Melanopic Lumens: NR

M/P: 3.64

λ (nm)	Power W [^] /nm	Lumens (φ/nm)	λ (nm)	Power W [^] /nm	Lumens (φ/nm)	λ (nm)	Power W [^] /nm	Lumens (φ/nm)	λ (nm)	Power W [^] /nm	Lumens (φ/nm)	λ (nm)	Power W [^] /nm	Lumens (φ/nm)
360	0	NR	490	141	NR	620	276	NR	750	5	NR	880	0	NR
365	0	NR	495	167	NR	625	279	NR	755	4	NR	885	0	NR
370	0	NR	500	193	NR	630	1000	NR	760	4	NR	890	0	NR
375	0	NR	505	215	NR	635	628	NR	765	3	NR	895	0	NR
380	0	NR	510	230	NR	640	164	NR	770	3	NR	900	0	NR
385	0	NR	515	243	NR	645	161	NR	775	2	NR	905	0	NR
390	1	NR	520	251	NR	650	137	NR	780	2	NR	910	0	NR
395	2	NR	525	256	NR	655	111	NR	785	2	NR	915	0	NR
400	3	NR	530	262	NR	660	92	NR	790	1	NR	920	0	NR
405	4	NR	535	267	NR	665	76	NR	795	1	NR	925	0	NR
410	6	NR	540	271	NR	670	71	NR	800	1	NR	930	0	NR
415	11	NR	545	276	NR	675	56	NR	805	1	NR	935	0	NR
420	20	NR	550	280	NR	680	47	NR	810	1	NR	940	0	NR
425	37	NR	555	285	NR	685	40	NR	815	1	NR	945	0	NR
430	63	NR	560	290	NR	690	34	NR	820	1	NR	950	0	NR
435	108	NR	565	294	NR	695	29	NR	825	1	NR	955	0	NR
440	186	NR	570	296	NR	700	25	NR	830	0	NR	960	0	NR
445	323	NR	575	298	NR	705	21	NR	835	0	NR	965	0	NR
450	403	NR	580	299	NR	710	18	NR	840	0	NR	970	0	NR
455	293	NR	585	298	NR	715	15	NR	845	0	NR	975	0	NR
460	214	NR	590	296	NR	720	13	NR	850	0	NR	980	0	NR
465	180	NR	595	288	NR	725	11	NR	855	0	NR	985	0	NR
470	132	NR	600	286	NR	730	9	NR	860	0	NR	990	0	NR
475	109	NR	605	282	NR	735	8	NR	865	0	NR	995	0	NR
480	110	NR	610	311	NR	740	7	NR	870	0	NR	1000	0	NR
485	121	NR	615	334	NR	745	6	NR	875	0	NR			

Summary

$R_f = 90.7$
 $R_g = 101$
 $CIE R_a = 93.4$
 $R_9 = 66.4$



Color Vector Graphics

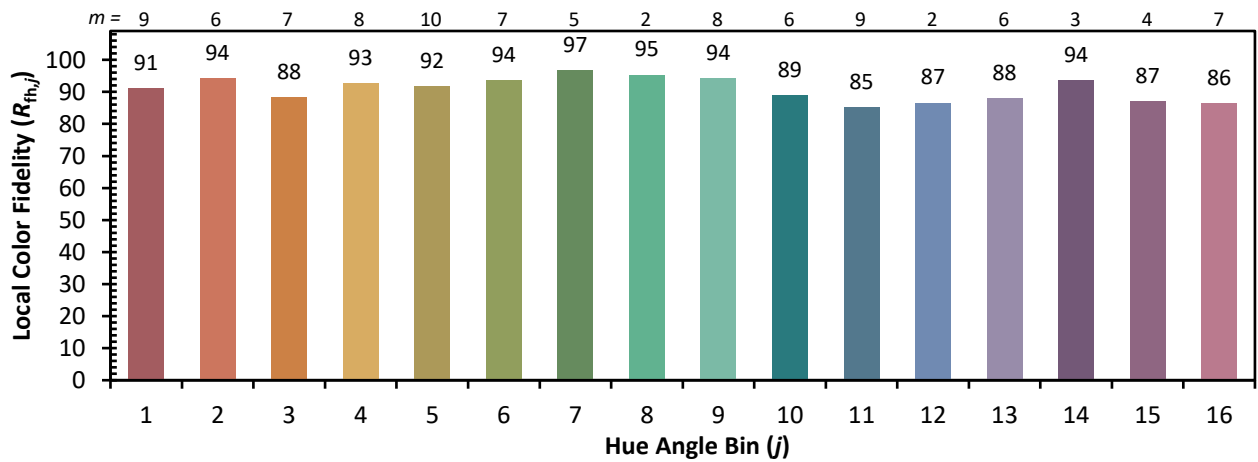
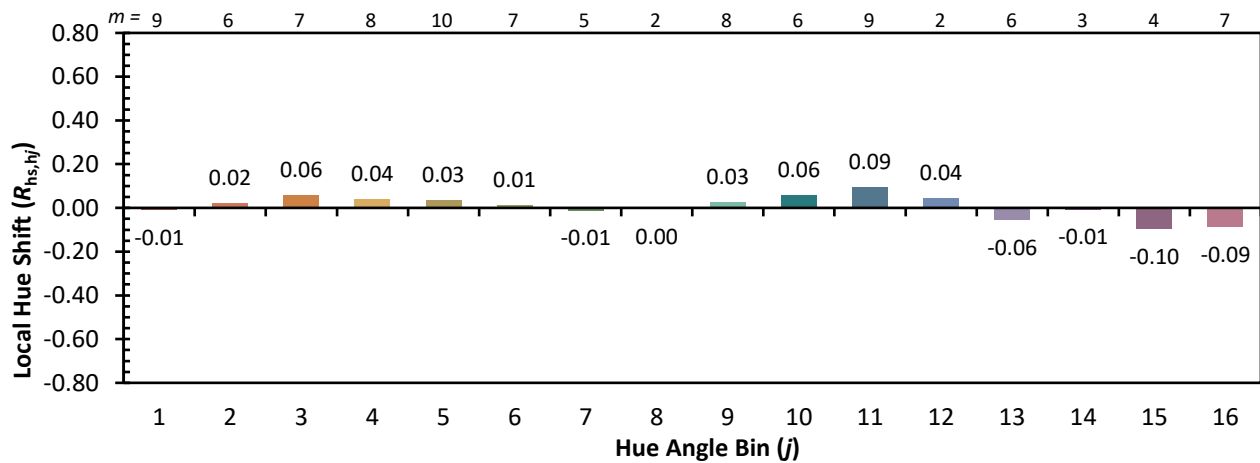
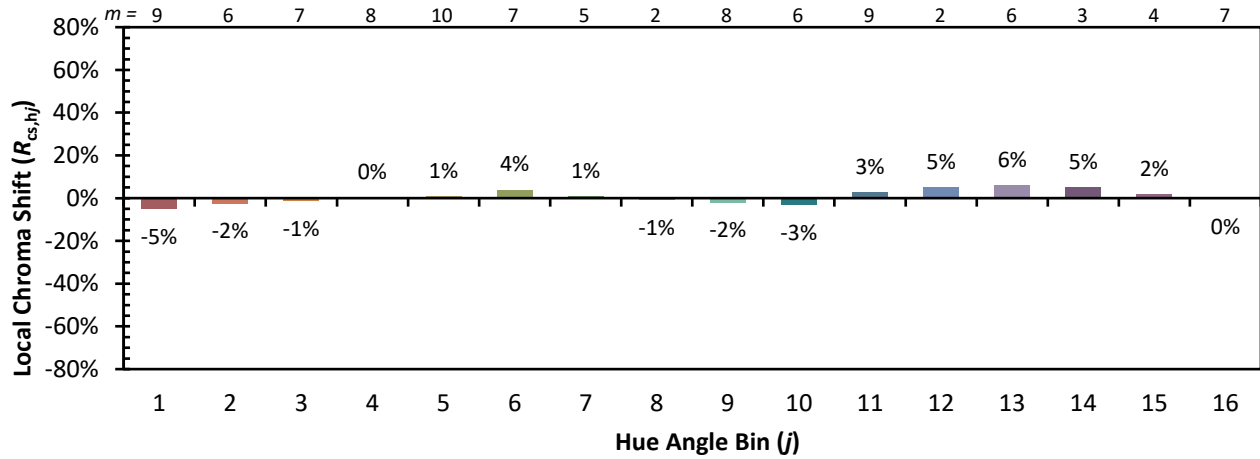


Individual Sample Fidelity Index ($R_{f,i}$)

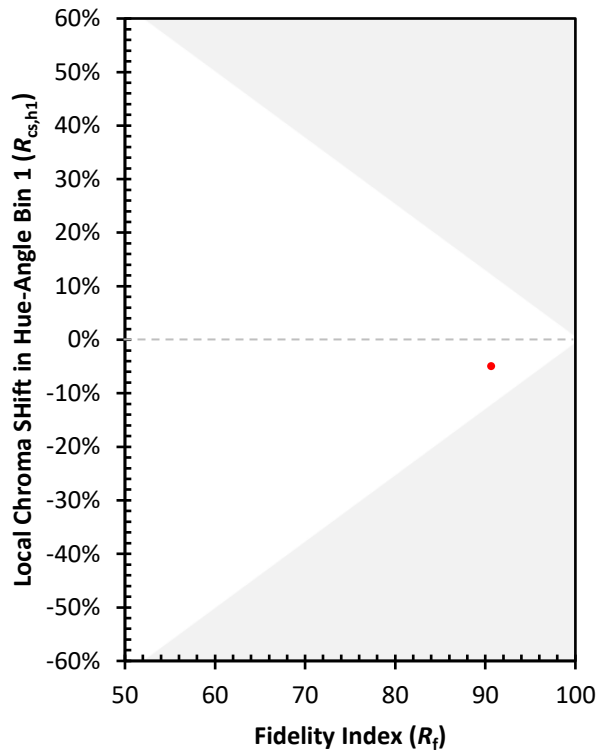
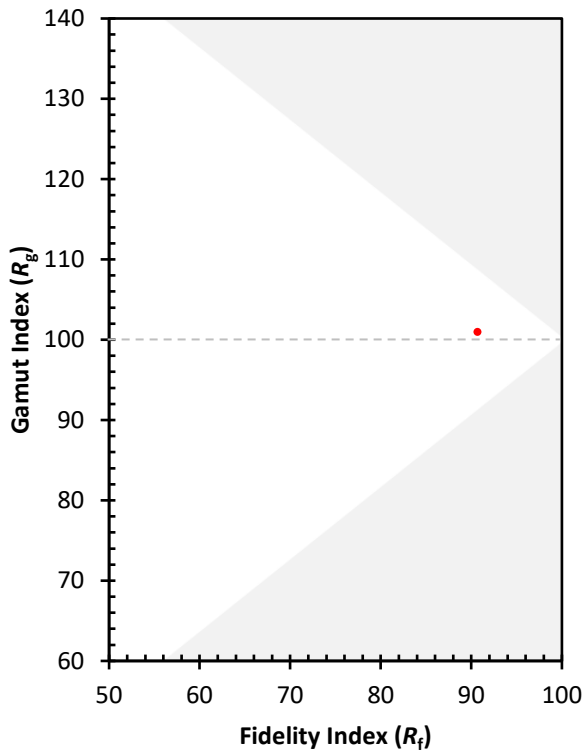
CES01 = 86	CES26 = 90	CES51 = 99	CES76 = 83
CES02 = 62	CES27 = 93	CES52 = 97	CES77 = 87
CES03 = 31	CES28 = 94	CES53 = 95	CES78 = 79
CES04 = 69	CES29 = 91	CES54 = 96	CES79 = 94
CES05 = 49	CES30 = 98	CES55 = 95	CES80 = 91
CES06 = 50	CES31 = 92	CES56 = 95	CES81 = 80
CES07 = 42	CES32 = 84	CES57 = 94	CES82 = 96
CES08 = 41	CES33 = 95	CES58 = 95	CES83 = 95
CES09 = 29	CES34 = 90	CES59 = 98	CES84 = 93
CES10 = 74	CES35 = 94	CES60 = 93	CES85 = 82
CES11 = 57	CES36 = 84	CES61 = 93	CES86 = 84
CES12 = 63	CES37 = 92	CES62 = 90	CES87 = 90
CES13 = 43	CES38 = 93	CES63 = 92	CES88 = 97
CES14 = 74	CES39 = 98	CES64 = 91	CES89 = 84
CES15 = 71	CES40 = 96	CES65 = 88	CES90 = 99
CES16 = 47	CES41 = 98	CES66 = 88	CES91 = 74
CES17 = 49	CES42 = 89	CES67 = 87	CES92 = 78
CES18 = 56	CES43 = 89	CES68 = 87	CES93 = 87
CES19 = 71	CES44 = 99	CES69 = 88	CES94 = 75
CES20 = 66	CES45 = 93	CES70 = 84	CES95 = 83
CES21 = 85	CES46 = 95	CES71 = 80	CES96 = 91
CES22 = 78	CES47 = 92	CES72 = 93	CES97 = 93
CES23 = 91	CES48 = 96	CES73 = 78	CES98 = 93
CES24 = 90	CES49 = 93	CES74 = 92	CES99 = 94
CES25 = 71	CES50 = 99	CES75 = 81	



Color Rendition by Hue-Angle Bin



Measure Comparisons



(END OF REPORT)