

Cooper Lighting Solutions Photometric Lab
1121 Highway 74 South
Peachtree City, GA 30269



Scaled data based on original data using
LM-79-2019 Approved Method: Electrical and Photometric Measurements of Solid-
State Lighting Products

Test Report Prepared for
Cooper Lighting Solutions

Brand: METALUX

Report Number: P1444814

Luminaire Tested: EHBR1-30-UNV-TA-L940-UPL30

Issue Date: 5/1/2026

Test Information

Test Method: LM-79-2019
Report Number: P1444814
REPORT IS A COMBINATION OF REPORTS P1444339 AND P1431635
Test Lab: INNOVATION CENTER
Issue Date: 5/1/2026
Manufacturer: COOPER LIGHTING SOLUTIONS
Product Line: METALUX
Catalog Number: EHBR1-30-UNV-TA-L940-UPL30
Description: Elevate Round Highbay at, 30000 lumens, 4000K 90CRI LEDs with TA lens
Light Source: -
Ballast/Driver: -

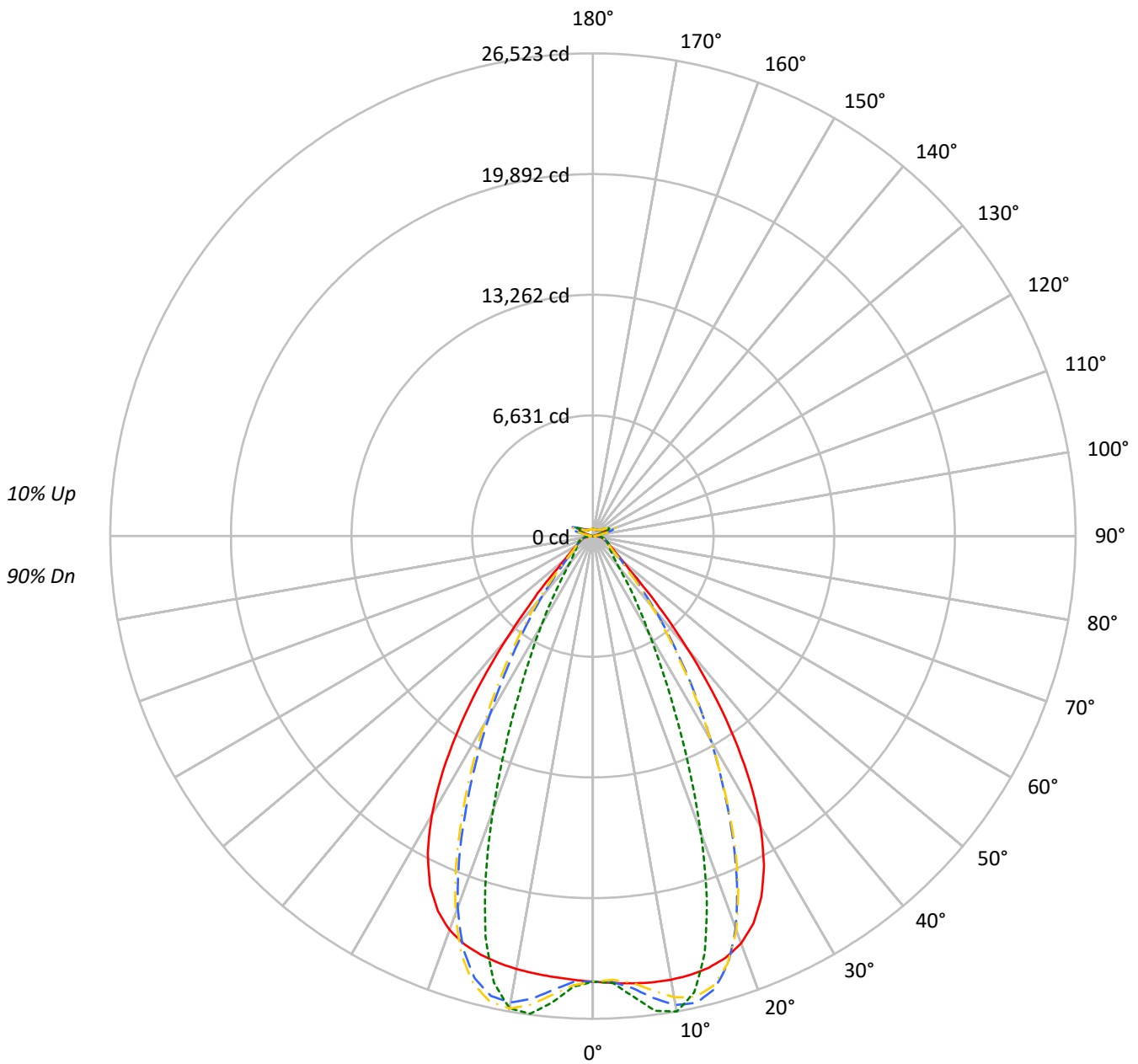
Summary

Lumens per Lamp: N/A
Luminaire Lumens: 31186.8 lumens
Efficiency: N/A
Efficacy: 171.5 lumens/watt
Spacing Criteria (0/90/45): 1.13 / 0.77 / 0.88
Luminous Opening: Vertical Cylinder (Dia: 1.71' x H: 0.1')
CIE Type: Direct

Input Watts (W): 181.8
Input Voltage (V): NR
Input Current (Ain): NR
Voltage Rise (V): NR
Power Factor: NR
Total Harmonic Distortion (THDi): NR
Frequency (hertz): 60
Stabilization Time: NR
Operation Time: NR
Ambient Temperature (°C): NR
Test Distance: 24 FT

TEST NUMBER: P1444814
CATALOG NUMBER: EHBR1-30-UNV-TA-L940-UPL30

Luminous Intensity Polar Plot



— 0°-180° - - 45°-225° - · - · 90°-270° - · - · 135°-315°



TEST NUMBER: P1444814
 CATALOG NUMBER: EHBR1-30-UNV-TA-L940-UPL30

COEFFICIENT OF UTILIZATION - ZONAL CAVITY METHOD:

RF	20				20				20				20				20				
RC	80				70				50				30				10			0	
RW	70	50	30	10	70	50	30	10	50	30	10	50	30	10	50	30	10	50	30	10	0
RCR																					
0	117	117	117	117	113	113	113	113	106	106	106	99	99	99	93	93	93	93	93	93	90
1	110	106	103	100	106	103	100	98	97	95	93	92	90	88	87	85	84	84	84	84	82
2	103	97	92	88	99	94	90	86	89	86	83	85	82	79	81	78	76	76	76	76	74
3	96	89	83	78	93	87	81	77	82	78	74	79	75	72	75	72	70	70	70	70	67
4	91	82	75	70	88	80	74	69	76	71	67	73	69	66	70	67	64	64	64	64	62
5	85	76	69	64	83	74	68	63	71	66	62	68	64	60	66	62	59	59	59	59	57
6	80	70	63	58	78	69	62	58	66	61	57	64	59	56	62	58	54	54	54	54	53
7	76	65	59	54	74	64	58	53	62	56	52	60	55	51	58	54	51	51	51	51	49
8	72	61	54	50	70	60	54	49	58	53	49	56	51	48	55	50	47	47	47	47	45
9	68	57	51	46	66	56	50	46	55	49	45	53	48	45	52	47	44	44	44	44	42
10	65	54	48	43	63	53	47	43	52	46	42	50	45	42	49	44	41	41	41	41	40

AVERAGE LUMINANCE (cd/sqm):

	0°	90°	180°	270°
0°	114974	114974	114974	114974
5°	115531	118900	113914	120458
10°	116496	124836	113702	124010
15°	117067	113163	113503	108607
20°	115857	84302	112065	78000
25°	109663	53316	106039	48375
30°	95799	32039	92088	29281
35°	73727	20105	69487	17809
40°	46639	12611	42671	11851
45°	24038	9825	23641	9663
50°	14094	8739	13661	8603
55°	10797	8268	10397	8194
60°	9136	8446	8747	8337
65°	8581	8821	8253	8520
70°	8383	9235	7965	8888
75°	8965	9795	8479	9362
80°	9276	10845	8410	9900
85°	8737	10466	7059	8961

MAXIMUM LUMINANCE 45°-90°:

Horizontal Angle: 25°
 Vertical Angle: 45°
 Luminance: 36788 cd/sqm



TEST NUMBER: P1444814
 CATALOG NUMBER: EHBR1-30-UNV-TA-L940-UPL30

ZONAL LUMENS:

Zone	Lumens	% Fixture
0°-10°	2412.9	7.7
10°-20°	6787.6	21.8
20°-30°	7730.6	24.8
30°-40°	5556.4	17.8
40°-50°	2562.6	8.2
50°-60°	1226.3	3.9
60°-70°	894.8	2.9
70°-80°	679.8	2.2
80°-90°	314.2	1.0
90°-100°	84.8	0.3
100°-110°	502.5	1.6
110°-120°	928.7	3.0
120°-130°	564.3	1.8
130°-140°	357.6	1.1
140°-150°	261.2	0.8
150°-160°	179.4	0.6
160°-170°	106.9	0.3
170°-180°	36.3	0.1
0°-30°	16931.0	54.3
0°-40°	22487.4	72.1
0°-60°	26276.3	84.3
0°-90°	28165.1	90.3
90°-120°	1516.1	4.9
90°-150°	2699.2	8.7
90°-180°	3022.0	9.7
0°-180°	31186.8	100.0

CANDELA DISTRIBUTION:

	0°	90°	180°	270°	360°	Flux
0°	24483	24483	24483	24483	24483	
5°	24668	25387	24322	25720	24668	2357
15°	24560	23741	23812	22785	24560	6920
25°	21900	10647	21176	9660	21900	9928
35°	13532	3690	12753	3269	13532	8305
45°	3889	1590	3825	1564	3889	3308
55°	1459	1117	1405	1107	1459	1347
65°	896	921	861	889	896	895
75°	632	690	597	660	632	657
85°	300	360	243	308	300	282
90°	88	110	31	36	88	54
95°	39	44	39	44	39	37
105°	180	233	120	233	180	238
115°	808	984	847	984	808	746
125°	602	637	683	638	602	549
135°	466	418	503	421	466	364
145°	408	400	435	404	408	258
155°	377	380	402	383	377	175
165°	371	372	386	374	371	106
175°	378	382	385	382	378	36
180°	382	382	382	382	382	



TEST NUMBER: P1444814
 CATALOG NUMBER: EHBR1-30-UNV-TA-L940-UPL30

CANDELA DISTRIBUTION (FULL):

	0°	2.5°	5°	7.5°	10°	12.5°	15°	17.5°	20°	22.5°	25°
0°	24483.0	24483.0	24483.0	24483.0	24483.0	24483.0	24483.0	24483.0	24483.0	24483.0	24483.0
2.5°	24576.5	24574.6	24574.2	24572.4	24572.1	24572.1	24571.2	24569.2	24568.0	24565.2	24561.9
5°	24667.7	24666.6	24667.3	24667.5	24665.8	24662.0	24655.9	24648.6	24639.3	24630.7	24622.8
7.5°	24738.3	24739.9	24742.2	24741.7	24736.3	24727.4	24715.1	24708.2	24712.3	24725.6	24756.2
10°	24751.1	24761.6	24765.7	24764.4	24753.7	24746.1	24749.1	24775.0	24826.6	24895.5	24989.7
12.5°	24701.0	24713.9	24713.4	24709.1	24698.8	24709.3	24746.8	24824.1	24934.7	25070.6	25230.0
15°	24560.0	24576.7	24572.1	24566.5	24559.6	24594.1	24669.2	24803.3	24974.3	25165.8	25361.9
17.5°	24286.5	24306.6	24296.9	24290.5	24284.7	24349.5	24478.4	24674.8	24890.1	25106.8	25292.7
20°	23811.9	23825.4	23802.1	23791.2	23800.4	23927.4	24117.2	24368.0	24595.0	24799.8	24926.9
22.5°	23037.5	23054.2	23010.4	23005.3	23059.4	23254.4	23494.7	23775.0	23988.3	24150.8	24199.7
25°	21899.6	21916.1	21864.0	21895.2	21987.2	22252.8	22538.9	22838.8	23020.8	23141.1	23107.9
27.5°	20363.8	20378.9	20329.5	20393.1	20538.5	20887.5	21224.3	21549.6	21711.7	21796.0	21689.2
30°	18426.8	18458.1	18399.8	18488.5	18710.5	19163.6	19549.5	19914.2	20075.9	20140.0	19973.8
32.5°	16126.3	16170.9	16106.6	16238.5	16548.3	17092.4	17530.9	17938.5	18117.2	18190.5	18002.7
35°	13531.6	13595.5	13521.7	13719.7	14101.8	14707.8	15193.3	15648.3	15860.1	15963.9	15774.7
37.5°	10782.7	10843.5	10803.5	11067.8	11487.3	12115.5	12610.9	13101.8	13341.1	13496.8	13347.7
40°	8083.8	8139.5	8169.7	8471.7	8866.4	9458.4	9934.3	10420.1	10687.7	10883.2	10791.2
42.5°	5705.6	5761.7	5864.4	6155.8	6485.0	6975.0	7382.7	7818.8	8074.4	8283.0	8247.6
45°	3889.3	3954.6	4083.2	4321.9	4559.9	4911.5	5210.9	5550.0	5758.8	5949.9	5952.2
47.5°	2725.4	2771.3	2886.2	3049.2	3204.4	3644.5	3662.6	3829.2	3969.6	4112.5	4131.0
50°	2100.5	2128.1	2189.0	2279.8	2367.8	2482.0	2586.6	2707.5	2793.8	2872.1	2890.8
52.5°	1726.4	1743.9	1775.0	1824.2	1875.2	1937.4	1993.3	2059.7	2106.6	2148.6	2157.3
55°	1459.1	1473.7	1519.9	1529.2	1587.5	1598.8	1623.7	1664.0	1691.3	1716.5	1722.7
57.5°	1257.4	1268.0	1277.8	1298.7	1316.7	1342.8	1363.8	1392.8	1410.0	1428.2	1429.7
60°	1098.3	1105.9	1112.9	1127.4	1139.7	1157.8	1172.3	1192.0	1204.3	1217.9	1219.5
62.5°	979.9	985.3	990.0	999.6	1008.2	1022.2	1033.8	1050.2	1061.7	1072.2	1074.6
65°	895.7	899.7	902.7	909.9	917.6	929.4	939.8	953.3	961.7	969.7	971.5
67.5°	821.1	824.9	828.0	834.6	839.9	848.7	855.7	865.8	872.2	878.6	878.8
70°	735.6	739.2	741.5	747.6	751.9	759.6	765.2	774.3	780.8	788.0	789.8
72.5°	676.5	678.5	681.7	687.4	693.2	701.4	708.9	718.4	726.2	733.7	736.8
75°	631.5	633.9	635.9	640.8	644.9	651.8	657.4	666.0	672.9	680.8	684.8
77.5°	566.4	569.3	571.1	575.9	579.5	586.1	590.2	597.9	603.6	610.9	614.4
80°	488.0	490.6	491.9	496.4	499.3	505.3	509.4	516.9	521.5	528.8	533.1
82.5°	401.0	403.5	404.2	408.5	410.0	415.0	418.0	425.7	431.4	440.9	447.5
85°	300.3	301.2	302.6	301.5	307.6	308.0	314.9	316.1	325.2	327.6	337.9
87.5°	183.5	186.3	187.6	191.8	193.6	197.8	199.1	203.6	206.0	211.0	213.4
90°	88.4	93.4	95.5	101.2	103.2	108.4	110.2	115.8	117.9	123.8	127.2
92.5°	34.1	36.3	38.6	41.1	43.4	46.2	48.8	51.1	53.6	56.3	60.9
95°	38.9	41.6	44.2	46.9	49.5	52.1	54.7	57.4	60.0	62.6	70.2
97.5°	48.9	51.2	53.5	55.8	58.0	60.4	62.6	64.9	67.2	69.4	78.5
100°	63.7	65.7	67.5	69.5	71.5	73.3	75.3	77.2	79.1	81.1	98.0
102.5°	105.7	112.5	119.4	126.2	133.1	139.8	146.8	153.5	160.4	167.2	203.2
105°	179.6	198.2	216.8	235.3	253.9	272.5	291.0	309.5	328.0	346.6	405.2
107.5°	307.3	341.5	375.9	410.3	444.7	479.0	513.3	547.6	582.0	616.2	675.6
110°	568.2	595.7	623.5	651.0	678.7	706.4	734.0	761.4	789.2	816.7	860.1



TEST NUMBER: P1444814
 CATALOG NUMBER: EHBR1-30-UNV-TA-L940-UPL30

CANDELA DISTRIBUTION (continued):

	0°	2.5°	5°	7.5°	10°	12.5°	15°	17.5°	20°	22.5°	25°
112.5°	766.3	778.8	791.2	803.8	816.3	828.7	841.2	853.7	866.2	878.6	909.7
115°	808.4	812.8	817.2	821.6	826.1	830.4	834.8	839.0	843.4	847.6	868.7
117.5°	784.8	784.1	783.4	782.7	781.8	781.0	780.3	779.3	778.5	777.6	789.4
120°	731.6	727.8	724.2	720.2	716.4	712.4	708.7	704.7	700.8	696.7	701.8
122.5°	664.5	660.0	655.6	650.8	646.3	641.5	637.0	631.9	627.4	622.6	624.6
125°	602.5	597.8	593.5	588.7	584.0	579.2	574.5	569.6	564.9	559.9	561.0
127.5°	548.6	545.5	542.3	538.8	535.4	532.1	528.6	525.0	521.6	517.9	518.2
130°	513.7	511.0	508.0	505.0	502.0	498.7	495.5	492.4	489.2	485.9	486.3
132.5°	485.3	483.3	481.3	479.1	476.9	474.5	472.3	469.6	467.4	465.0	465.5
135°	466.4	464.4	462.7	460.6	458.6	456.2	454.0	451.7	449.4	447.1	447.9
137.5°	450.3	448.7	447.0	445.0	443.1	440.9	439.0	436.7	434.6	432.4	433.2
140°	435.5	434.1	432.6	430.7	429.0	427.2	425.2	423.2	421.3	419.2	420.3
142.5°	419.1	417.7	416.6	415.2	413.9	412.3	410.8	409.1	407.6	405.8	407.2
145°	408.3	407.3	406.4	405.3	404.0	402.6	401.3	399.8	398.6	397.1	398.5
147.5°	398.8	398.0	397.3	396.4	395.5	394.2	393.1	391.9	390.8	389.6	391.1
150°	390.6	389.9	389.2	388.4	387.4	386.3	385.1	384.2	383.1	381.9	383.4
152.5°	382.0	381.1	380.5	379.6	378.7	377.5	376.8	375.6	374.6	373.5	374.8
155°	376.9	376.0	375.2	374.4	373.5	372.6	371.5	370.6	369.7	368.6	369.7
157.5°	373.6	372.8	372.3	371.4	371.0	370.2	369.5	368.7	367.9	367.2	367.9
160°	372.3	371.6	371.0	370.2	369.6	368.8	368.2	367.3	366.8	366.0	366.6
162.5°	371.1	370.3	369.7	368.9	368.4	367.6	367.0	366.3	365.7	364.8	365.6
165°	371.3	370.9	370.4	370.0	369.6	369.1	368.7	368.1	367.6	367.1	367.5
167.5°	374.6	374.0	373.5	372.8	372.3	371.8	371.2	370.5	370.0	369.3	369.8
170°	375.7	375.3	375.1	374.8	374.4	374.1	373.8	373.4	373.0	372.7	373.1
172.5°	377.8	377.4	377.2	377.0	376.7	376.5	376.2	375.9	375.7	375.4	376.0
175°	377.7	377.4	377.3	377.1	377.0	376.9	376.8	376.6	376.6	376.3	376.7
177.5°	380.3	380.2	380.2	380.1	380.1	380.0	379.9	379.7	379.6	379.6	379.9
180°	382.5	382.5	382.5	382.5	382.5	382.5	382.5	382.5	382.5	382.5	382.5



TEST NUMBER: P1444814
 CATALOG NUMBER: EHBR1-30-UNV-TA-L940-UPL30

CANDELA DISTRIBUTION (continued):

	27.5°	30°	32.5°	35°	37.5°	40°	42.5°	45°	47.5°	50°	52.5°
0°	24483.0	24483.0	24483.0	24483.0	24483.0	24483.0	24483.0	24483.0	24483.0	24483.0	24483.0
2.5°	24559.6	24556.6	24552.5	24547.4	24542.9	24537.7	24525.5	24521.8	24525.9	24528.6	24534.2
5°	24617.9	24619.7	24620.3	24631.4	24641.1	24665.1	24853.5	24928.3	24986.3	25023.0	25078.8
7.5°	24793.9	24850.5	24906.5	24981.8	25046.7	25134.5	25464.0	25604.3	25704.0	25775.7	25864.0
10°	25092.0	25215.6	25331.4	25467.2	25583.9	25717.6	26024.3	26161.0	26247.3	26310.0	26368.7
12.5°	25392.4	25563.8	25718.6	25869.7	25996.1	26111.9	26219.8	26267.7	26271.7	26273.7	26242.6
15°	25548.8	25712.7	25849.2	25949.0	26023.3	26056.1	25870.4	25772.9	25649.8	25548.3	25381.5
17.5°	25450.0	25548.3	25607.3	25601.5	25570.9	25468.1	24942.0	24652.6	24365.4	24106.5	23767.1
20°	25011.1	25003.7	24952.4	24807.1	24632.1	24359.8	23457.9	22937.6	22434.4	21992.5	21456.4
22.5°	24194.6	24066.2	23887.0	23573.8	23225.8	22750.3	21457.8	20692.3	19991.9	19373.2	18680.1
25°	23011.6	22747.2	22416.8	21919.6	21378.8	20685.2	19092.1	18140.1	17299.1	16569.8	15770.0
27.5°	21497.4	21099.3	20615.1	19926.9	19194.2	18305.6	16539.4	15488.7	14585.9	13804.0	12952.8
30°	19704.8	19187.0	18561.8	17707.6	16823.9	15816.1	14024.7	12960.5	12046.7	11242.4	10390.5
32.5°	17679.0	17072.5	16339.9	15381.2	14425.5	13389.3	11659.4	10629.2	9756.3	8982.4	8211.4
35°	15444.7	14794.3	14019.2	13041.4	12091.5	11084.0	9496.6	8567.8	7796.9	7112.8	6490.3
37.5°	13048.0	12409.3	11672.7	10751.1	9870.2	8957.3	7587.6	6809.3	6162.4	5594.6	5113.9
40°	10556.1	9997.2	9359.8	8563.0	7811.3	7051.0	5926.7	5308.8	4798.3	4365.3	4005.1
42.5°	8094.6	7661.6	7172.7	6543.1	5967.8	5388.9	4523.6	4065.8	3687.7	3376.0	3121.4
45°	5872.9	5583.3	5255.4	4817.6	4419.6	4015.9	3399.9	3078.3	2832.0	2631.0	2461.0
47.5°	4105.5	3937.4	3927.2	3522.6	3230.8	2983.9	2587.1	2383.9	2233.1	2111.3	2003.7
50°	2883.2	2801.8	2700.8	2556.5	2421.1	2281.5	2039.7	1917.0	1828.5	1754.8	1686.7
52.5°	2155.4	2113.2	2059.4	1982.8	1909.4	1830.9	1677.9	1599.7	1572.0	1503.2	1449.4
55°	1721.6	1697.4	1666.7	1621.7	1577.1	1559.2	1428.1	1370.1	1333.3	1306.2	1277.2
57.5°	1430.0	1412.0	1393.8	1363.3	1337.5	1306.2	1236.6	1206.8	1185.0	1168.9	1148.9
60°	1219.8	1209.0	1198.8	1181.0	1167.0	1150.1	1105.9	1089.1	1077.7	1068.0	1055.3
62.5°	1076.6	1071.0	1065.8	1056.3	1049.2	1040.0	1009.8	1001.7	996.0	991.2	983.4
65°	973.3	969.3	966.3	960.0	956.4	951.1	925.1	919.7	916.2	914.4	909.9
67.5°	879.3	875.2	873.2	868.8	867.3	863.9	842.7	839.7	838.5	839.0	837.5
70°	791.5	789.8	790.7	789.9	792.0	792.6	779.7	779.6	781.0	783.7	784.0
72.5°	738.9	738.9	739.9	740.3	742.2	743.2	732.5	731.9	732.6	734.5	734.6
75°	688.8	689.6	692.3	693.2	695.5	695.9	681.8	680.2	680.3	682.2	681.5
77.5°	619.5	622.4	627.6	630.4	634.7	635.5	619.6	617.8	617.9	619.7	618.1
80°	540.8	546.5	554.8	560.5	567.2	569.9	553.6	549.7	546.0	545.5	542.2
82.5°	457.3	464.2	474.1	479.2	486.4	488.1	460.8	455.6	452.5	452.8	449.8
85°	349.1	354.3	363.3	366.2	370.7	370.3	339.1	325.7	329.2	323.7	328.1
87.5°	218.9	222.0	227.7	228.3	230.5	230.0	198.6	192.5	190.6	190.7	188.5
90°	134.0	137.8	144.4	146.2	151.2	152.5	128.8	127.6	123.9	123.6	119.0
92.5°	65.9	70.4	75.3	79.9	84.8	89.5	91.4	95.2	90.6	85.4	81.0
95°	78.0	85.6	93.4	101.1	108.8	116.5	124.2	131.9	124.7	117.5	110.3
97.5°	87.7	96.8	105.8	114.9	124.0	133.1	142.3	151.4	143.7	135.7	128.0
100°	115.0	132.0	149.1	166.0	183.0	200.0	217.0	234.0	219.1	204.0	189.1
102.5°	239.2	275.3	311.4	347.4	383.5	419.5	455.8	491.9	457.6	423.2	389.0
105°	463.7	522.1	580.6	638.9	697.4	755.8	814.6	873.1	818.4	763.5	708.7
107.5°	734.9	794.3	853.5	912.7	972.1	1031.4	1091.1	1150.5	1097.0	1043.3	990.0
110°	903.4	946.6	990.0	1033.1	1076.3	1119.7	1163.5	1206.9	1174.8	1142.7	1110.5



TEST NUMBER: P1444814
 CATALOG NUMBER: EHBR1-30-UNV-TA-L940-UPL30

CANDELA DISTRIBUTION (continued):

	27.5°	30°	32.5°	35°	37.5°	40°	42.5°	45°	47.5°	50°	52.5°
112.5°	940.5	971.5	1002.5	1033.4	1064.2	1095.1	1126.9	1158.0	1141.9	1125.6	1109.7
115°	889.4	910.4	931.2	952.0	973.0	993.7	1015.5	1036.6	1031.5	1026.3	1021.3
117.5°	801.0	812.8	824.5	836.1	847.6	859.3	872.3	884.1	885.0	885.9	886.8
120°	706.8	711.8	716.6	721.7	726.4	731.2	737.8	743.0	747.4	751.6	756.0
122.5°	626.5	628.4	630.3	632.1	634.0	635.8	639.5	641.7	644.7	647.8	650.8
125°	562.0	562.9	563.8	564.7	565.5	566.4	569.4	570.6	570.9	571.1	571.3
127.5°	518.5	518.6	518.8	519.0	519.1	519.3	521.6	522.2	520.5	518.6	516.8
130°	486.9	487.3	487.7	488.3	488.7	489.3	492.0	493.0	489.9	486.5	483.3
132.5°	466.1	466.8	467.3	468.1	468.6	469.2	472.3	473.6	469.9	466.0	462.4
135°	448.6	449.4	450.3	451.0	451.8	452.7	456.2	457.6	454.2	450.5	446.9
137.5°	433.9	434.7	435.5	436.5	437.2	438.1	441.9	443.4	440.7	437.7	434.9
140°	421.3	422.1	423.2	424.3	425.3	426.4	430.5	432.3	430.1	427.8	425.6
142.5°	408.4	409.9	411.3	412.8	414.2	415.8	420.6	422.9	421.3	419.4	417.8
145°	400.0	401.7	403.3	405.0	406.7	408.4	413.8	416.4	415.3	414.3	413.2
147.5°	392.2	393.9	395.4	396.9	398.5	400.3	405.8	408.3	407.8	407.0	406.4
150°	384.7	386.4	387.8	389.4	391.1	392.9	399.0	401.8	401.3	400.7	400.0
152.5°	376.1	377.5	378.9	380.3	381.8	383.5	390.6	393.4	393.1	392.4	391.9
155°	370.7	371.7	372.8	374.0	375.1	376.5	384.1	386.7	386.4	386.2	385.9
157.5°	368.6	369.3	370.0	370.8	371.6	372.6	380.3	383.0	382.6	382.3	382.1
160°	367.1	367.7	368.2	368.8	369.4	370.1	378.1	380.5	380.3	379.9	379.6
162.5°	366.3	367.3	367.9	368.7	369.5	370.4	378.4	381.2	380.7	380.2	379.7
165°	368.1	368.5	368.9	369.5	370.0	370.5	378.0	380.2	380.0	379.6	379.4
167.5°	370.2	370.8	371.4	371.9	372.5	373.1	380.1	382.3	382.1	381.7	381.5
170°	373.4	374.0	374.3	374.9	375.4	376.0	381.7	383.6	383.3	382.7	382.3
172.5°	376.5	377.1	377.6	378.2	378.6	379.3	384.2	385.9	385.6	385.2	384.8
175°	377.0	377.4	377.9	378.3	378.8	379.3	383.1	384.4	384.3	384.1	383.9
177.5°	380.3	380.5	380.9	381.2	381.6	381.9	384.3	385.1	385.0	385.0	385.0
180°	382.5	382.5	382.5	382.5	382.5	382.5	382.5	382.5	382.5	382.5	382.5



TEST NUMBER: P1444814
 CATALOG NUMBER: EHBR1-30-UNV-TA-L940-UPL30

CANDELA DISTRIBUTION (continued):

	55°	57.5°	60°	62.5°	65°	67.5°	70°	72.5°	75°	77.5°	80°
0°	24483.0	24483.0	24483.0	24483.0	24483.0	24483.0	24483.0	24483.0	24483.0	24483.0	24483.0
2.5°	24535.5	24544.2	24545.4	24555.5	24554.7	24566.7	24564.8	24574.6	24568.8	24576.9	24570.1
5°	25111.9	25164.1	25191.4	25242.4	25258.5	25304.1	25317.1	25358.7	25360.4	25393.5	25385.9
7.5°	25926.6	26003.5	26049.3	26112.3	26144.3	26196.8	26220.0	26258.8	26271.4	26302.2	26304.5
10°	26413.1	26450.4	26476.6	26494.2	26510.3	26517.8	26526.6	26524.2	26526.6	26523.1	26530.7
12.5°	26221.7	26167.1	26131.0	26062.6	26022.9	25947.4	25910.2	25837.5	25811.1	25748.7	25739.7
15°	25252.5	25062.2	24927.7	24732.1	24609.1	24416.7	24304.1	24130.5	24051.2	23913.2	23877.0
17.5°	23486.0	23132.8	22859.2	22508.5	22265.0	21937.2	21731.0	21459.6	21311.0	21092.2	21016.4
20°	21009.6	20486.8	20076.6	19587.9	19238.2	18802.5	18523.6	18171.8	17967.5	17698.8	17589.8
22.5°	18102.2	17451.1	16938.9	16361.6	15939.7	15454.1	15120.0	14739.3	14517.1	14225.1	14095.8
25°	15105.3	14387.5	13818.0	13209.8	12764.0	12277.2	11943.0	11569.1	11339.2	11061.9	10933.4
27.5°	12239.2	11512.6	10962.2	10396.7	9987.8	9548.6	9247.0	8920.5	8716.5	8479.8	8359.0
30°	9710.0	9069.1	8600.7	8131.4	7791.3	7434.5	7183.9	6913.4	6734.3	6531.7	6416.5
32.5°	7649.3	7154.5	6787.8	6415.4	6137.0	5838.9	5622.3	5383.6	5222.0	5041.0	4936.8
35°	6058.1	5673.7	5381.2	5074.7	4835.4	4581.6	4390.8	4184.7	4039.7	3883.9	3793.8
37.5°	4786.5	4480.8	4240.1	3985.5	3789.1	3578.7	3507.9	3271.5	3121.2	2996.8	2910.7
40°	3756.5	3513.4	3314.2	3119.5	2959.3	2799.8	2671.8	2545.4	2448.5	2359.5	2298.0
42.5°	2933.6	2757.4	2612.0	2469.3	2352.4	2236.2	2143.4	2056.4	1991.1	1933.0	1893.3
45°	2332.0	2210.9	2109.8	2009.4	1926.9	1849.3	1786.9	1731.4	1689.2	1654.2	1629.4
47.5°	1915.8	1832.9	1761.6	1693.8	1637.8	1587.0	1545.1	1531.5	1486.2	1455.6	1444.0
50°	1628.1	1578.1	1523.9	1474.0	1436.5	1399.3	1372.2	1345.7	1328.6	1314.6	1310.4
52.5°	1413.5	1375.2	1345.1	1313.4	1288.7	1262.3	1243.6	1225.9	1216.5	1209.2	1208.3
55°	1253.9	1227.2	1207.1	1185.9	1171.2	1155.6	1145.9	1136.6	1132.5	1128.8	1129.1
57.5°	1133.2	1115.3	1102.2	1088.4	1080.5	1073.1	1070.6	1068.2	1069.5	1070.1	1072.1
60°	1045.1	1033.5	1025.4	1017.5	1014.1	1011.7	1013.5	1015.6	1019.9	1023.3	1026.4
62.5°	977.7	971.1	967.0	962.9	962.5	962.7	966.3	969.7	975.2	979.2	982.1
65°	908.3	904.4	903.2	900.4	901.8	902.7	907.1	909.8	915.1	918.2	922.0
67.5°	838.1	837.3	838.0	838.0	840.5	842.6	846.8	849.8	854.4	857.3	860.4
70°	786.3	786.7	788.6	788.9	791.6	793.0	796.7	798.7	802.7	805.2	808.9
72.5°	736.0	735.2	735.6	734.4	735.3	735.0	736.9	738.0	741.4	743.4	747.8
75°	682.3	680.1	679.5	677.1	677.2	675.4	676.3	676.2	678.4	679.4	682.6
77.5°	617.6	613.8	611.9	607.8	607.7	606.2	607.8	608.8	612.8	614.7	618.4
80°	540.1	534.1	531.3	526.7	527.5	527.2	531.1	534.2	539.1	540.0	544.7
82.5°	448.9	442.8	439.9	435.3	436.4	436.5	440.1	440.7	445.0	446.8	452.2
85°	321.4	323.7	317.3	317.8	316.4	318.9	321.4	324.5	328.0	333.9	338.5
87.5°	189.3	188.5	190.7	191.0	194.2	196.0	201.2	204.2	210.2	214.7	223.1
90°	117.6	113.1	113.3	110.8	112.4	109.9	111.6	108.9	111.2	110.4	113.8
92.5°	75.6	71.0	65.8	61.1	56.0	51.4	48.8	46.8	44.3	42.3	39.7
95°	103.1	95.9	88.7	81.5	74.3	67.2	64.6	62.0	59.3	56.6	54.0
97.5°	120.3	112.6	104.9	97.1	89.3	81.6	79.8	78.1	76.4	74.6	72.9
100°	174.1	159.2	144.3	129.3	114.4	99.5	98.1	96.7	95.3	93.9	92.4
102.5°	354.8	320.5	286.3	252.0	217.8	183.6	177.7	171.7	165.7	159.8	153.8
105°	653.8	599.0	544.2	489.4	434.6	379.8	363.5	347.0	330.7	314.4	298.0
107.5°	936.5	882.9	829.5	776.2	722.7	669.3	643.4	617.6	591.7	565.9	540.1
110°	1078.2	1046.1	1014.1	981.9	949.9	917.9	893.1	868.6	843.8	819.2	794.6



TEST NUMBER: P1444814
 CATALOG NUMBER: EHBR1-30-UNV-TA-L940-UPL30

CANDELA DISTRIBUTION (continued):

	55°	57.5°	60°	62.5°	65°	67.5°	70°	72.5°	75°	77.5°	80°
112.5°	1093.5	1077.4	1061.3	1045.4	1029.4	1013.4	1001.3	989.3	977.3	965.3	953.2
115°	1016.1	1010.9	1005.8	1000.9	995.8	990.7	989.8	989.1	988.1	987.4	986.5
117.5°	887.7	888.7	889.5	890.6	891.6	892.6	899.0	905.3	911.8	918.3	924.9
120°	760.3	764.6	768.9	773.4	777.6	782.2	790.7	799.4	807.9	816.8	825.5
122.5°	653.7	656.7	659.7	662.9	665.9	669.0	677.4	686.0	694.4	703.1	712.1
125°	571.3	571.4	571.7	571.7	571.8	572.1	579.0	586.1	593.2	600.4	607.5
127.5°	514.9	513.0	511.1	509.3	507.3	505.6	509.7	513.9	518.0	522.3	526.5
130°	480.0	476.6	473.3	470.1	466.6	463.4	465.0	466.7	468.2	470.0	471.7
132.5°	458.5	454.6	450.7	446.9	443.0	439.2	439.1	439.1	439.0	439.1	439.3
135°	443.3	439.6	435.8	432.2	428.5	424.9	423.9	422.9	422.0	421.2	420.5
137.5°	431.9	429.0	426.1	423.2	420.2	417.3	415.8	414.7	413.2	412.2	410.9
140°	423.2	421.0	418.5	416.2	413.8	411.6	410.3	409.3	408.2	407.3	406.3
142.5°	416.0	414.3	412.5	410.9	409.0	407.3	406.2	405.2	404.1	403.2	402.2
145°	412.0	410.9	409.7	408.5	407.5	406.4	405.4	404.6	403.8	403.1	402.6
147.5°	405.7	405.1	404.3	403.6	402.8	402.0	401.4	401.1	400.3	400.0	399.4
150°	399.3	398.7	398.0	397.5	396.7	396.0	395.7	395.4	395.0	394.9	394.6
152.5°	391.2	390.7	390.1	389.5	388.8	388.2	387.9	387.8	387.5	387.3	386.8
155°	385.4	385.0	384.6	384.2	383.7	383.4	382.9	382.4	382.2	381.8	381.3
157.5°	381.7	381.4	380.9	380.7	380.1	379.7	379.4	379.0	378.5	378.2	377.9
160°	379.3	379.0	378.5	378.2	377.9	377.5	376.9	376.4	375.7	375.3	374.7
162.5°	379.2	378.7	378.2	377.7	377.1	376.7	376.2	375.8	375.5	375.1	374.6
165°	379.0	378.6	378.2	377.9	377.7	377.3	376.7	376.2	375.5	375.1	374.5
167.5°	381.1	380.9	380.5	380.2	379.7	379.5	379.0	378.4	377.9	377.3	376.8
170°	382.0	381.5	381.1	380.6	380.1	379.6	379.2	378.6	378.1	377.7	377.1
172.5°	384.4	384.2	383.8	383.5	382.9	382.5	382.2	381.7	381.2	380.8	380.5
175°	383.8	383.7	383.7	383.4	383.3	383.1	382.9	382.8	382.6	382.5	382.3
177.5°	385.0	384.9	384.9	384.7	384.6	384.6	384.3	384.1	383.8	383.6	383.5
180°	382.5	382.5	382.5	382.5	382.5	382.5	382.5	382.5	382.5	382.5	382.5



TEST NUMBER: P1444814
 CATALOG NUMBER: EHBR1-30-UNV-TA-L940-UPL30

CANDELA DISTRIBUTION (continued):

	82.5°	85°	87.5°	90°	92.5°	95°	97.5°	100°	102.5°	105°	107.5°
0°	24483.0	24483.0	24483.0	24483.0	24483.0	24483.0	24483.0	24483.0	24483.0	24483.0	24483.0
2.5°	24577.2	24570.9	24573.9	24562.4	24565.2	24551.3	24550.0	24534.2	24532.7	24517.9	24512.4
5°	25409.3	25395.6	25411.1	25387.1	25391.7	25360.4	25357.8	25317.4	25303.4	25252.7	25230.8
7.5°	26323.8	26318.7	26328.1	26308.0	26307.3	26279.4	26267.9	26231.6	26209.1	26155.9	26121.9
10°	26524.2	26529.0	26521.2	26523.1	26512.2	26509.2	26498.0	26491.0	26472.8	26459.0	26438.7
12.5°	25692.3	25697.2	25665.5	25685.7	25669.7	25706.9	25703.9	25747.6	25754.3	25809.7	25830.6
15°	23769.4	23763.5	23702.6	23740.9	23720.3	23801.9	23820.0	23929.7	23988.3	24129.1	24215.5
17.5°	20864.8	20849.1	20763.3	20810.1	20786.3	20906.4	20946.7	21122.0	21231.4	21458.1	21619.7
20°	17402.3	17372.2	17271.9	17326.6	17302.1	17438.5	17496.1	17708.0	17848.9	18149.3	18363.0
22.5°	13896.7	13849.3	13751.0	13802.0	13778.9	13920.3	13995.2	14207.8	14369.3	14677.6	14927.0
25°	10748.8	10706.5	10611.5	10647.2	10638.6	10758.3	10824.8	11025.9	11184.6	11478.3	11716.4
27.5°	8198.4	8154.3	8068.5	8093.9	8085.1	8187.0	8249.8	8417.8	8554.3	8801.5	9010.6
30°	6274.6	6221.5	6148.8	6162.7	6156.8	6239.3	6297.9	6439.4	6556.5	6765.4	6945.5
32.5°	4809.5	4756.1	4689.3	4695.8	4687.0	4751.8	4800.1	4923.1	5025.1	5202.8	5359.6
35°	3679.9	3742.2	3599.4	3689.9	3595.7	3734.0	3684.3	3761.1	3848.9	3998.6	4129.3
37.5°	2829.0	2785.5	2748.8	2744.9	2744.7	2776.8	2814.6	2888.6	2965.9	3077.4	3192.7
40°	2241.8	2211.4	2187.6	2185.8	2187.6	2210.3	2238.3	2289.5	2346.1	2426.2	2510.9
42.5°	1859.4	1839.2	1824.8	1823.8	1828.4	1844.5	1863.9	1894.3	1931.1	1983.1	2041.1
45°	1609.3	1598.1	1590.0	1589.7	1591.7	1600.1	1611.3	1630.3	1653.6	1686.0	1722.7
47.5°	1433.8	1431.1	1426.1	1426.3	1424.0	1427.5	1428.8	1439.4	1451.8	1476.2	1524.2
50°	1306.1	1306.1	1302.6	1302.4	1299.2	1299.0	1296.3	1300.5	1306.3	1321.4	1336.7
52.5°	1205.1	1204.7	1201.0	1200.2	1196.8	1196.6	1194.3	1196.0	1196.7	1204.3	1213.6
55°	1126.2	1123.8	1118.9	1117.3	1116.0	1118.0	1117.0	1117.1	1116.1	1119.4	1122.1
57.5°	1069.5	1066.5	1061.8	1060.4	1060.1	1062.4	1062.5	1061.7	1057.4	1054.5	1050.4
60°	1024.7	1021.6	1016.6	1015.3	1016.1	1019.3	1019.1	1016.4	1010.1	1004.6	998.1
62.5°	980.7	979.4	976.8	976.6	975.9	976.5	974.1	971.2	965.0	959.1	952.1
65°	921.6	922.2	920.4	920.7	918.3	918.0	914.5	911.7	905.4	900.1	892.9
67.5°	860.3	860.7	859.2	859.2	858.0	858.2	856.1	853.5	848.1	843.8	838.2
70°	809.7	811.0	810.1	810.3	808.9	808.4	805.1	802.6	797.0	793.4	788.5
72.5°	749.2	751.9	751.8	752.5	750.3	749.2	745.3	742.1	737.1	734.2	730.2
75°	683.9	687.5	688.4	690.0	686.9	685.2	680.9	678.4	674.3	672.6	670.0
77.5°	620.1	624.0	627.7	631.2	626.2	621.7	616.4	612.3	606.5	604.2	600.2
80°	548.5	555.4	563.6	570.5	561.6	552.5	543.7	537.2	529.5	526.3	521.2
82.5°	455.0	462.1	466.8	471.3	465.0	458.4	449.9	444.1	435.8	432.7	426.8
85°	345.7	354.5	357.3	359.7	355.7	352.2	344.1	333.3	328.1	319.8	315.5
87.5°	227.4	232.6	233.7	234.5	232.0	230.3	225.1	220.1	211.0	204.5	196.6
90°	112.0	113.9	110.4	110.1	108.4	110.2	106.5	106.2	100.2	98.9	93.8
92.5°	37.5	35.0	32.8	30.5	33.2	35.1	37.7	39.7	42.2	44.3	46.8
95°	51.4	48.7	46.1	43.5	45.7	47.7	49.8	51.9	54.0	56.1	58.2
97.5°	71.1	69.4	67.6	65.9	67.1	68.3	69.5	70.7	72.0	73.2	74.5
100°	91.0	89.6	88.2	86.8	86.8	86.8	86.8	86.8	86.8	86.8	86.8
102.5°	147.9	141.9	135.9	130.0	134.0	138.0	142.1	146.1	150.1	154.1	158.2
105°	281.7	265.4	249.1	232.8	248.6	264.4	280.1	296.0	311.7	327.8	343.5
107.5°	514.2	488.5	462.7	436.8	465.7	494.5	523.2	552.0	580.8	609.6	638.5
110°	770.1	745.5	721.0	696.4	727.0	757.4	788.0	818.5	849.1	879.6	910.3



TEST NUMBER: P1444814
 CATALOG NUMBER: EHBR1-30-UNV-TA-L940-UPL30

CANDELA DISTRIBUTION (continued):

	82.5°	85°	87.5°	90°	92.5°	95°	97.5°	100°	102.5°	105°	107.5°
112.5°	941.2	929.3	917.4	905.5	925.1	944.8	964.3	984.2	1003.8	1023.6	1043.2
115°	985.8	985.0	984.4	983.6	992.9	1002.3	1011.5	1020.9	1030.3	1039.6	1049.0
117.5°	931.4	938.0	944.6	951.3	954.3	957.3	960.3	963.3	966.5	969.6	972.7
120°	834.4	843.0	852.0	860.9	859.7	858.5	857.4	856.2	855.2	854.0	853.2
122.5°	720.8	729.6	738.5	747.4	744.8	742.1	739.5	737.0	734.6	732.1	729.8
125°	615.0	622.2	629.7	637.2	634.5	631.8	629.3	627.0	624.5	622.1	619.9
127.5°	531.0	535.6	540.1	544.7	543.5	542.3	541.3	540.2	539.2	538.4	537.6
130°	473.6	475.6	477.8	479.9	480.3	480.6	481.1	481.7	482.4	483.1	483.9
132.5°	439.6	439.9	440.4	440.9	442.3	443.7	445.3	446.9	448.8	450.5	452.6
135°	419.9	419.3	418.9	418.5	420.6	422.6	424.9	427.2	429.8	432.3	435.0
137.5°	410.1	409.1	408.4	407.5	409.6	411.7	414.0	416.4	418.8	421.4	424.1
140°	405.5	404.7	404.1	403.4	405.5	407.5	409.8	412.1	414.6	417.1	419.8
142.5°	401.4	400.7	400.1	399.6	401.4	403.3	405.5	407.5	409.8	412.0	414.4
145°	401.9	401.3	400.9	400.4	401.7	403.1	404.6	406.2	408.0	409.6	411.5
147.5°	399.0	398.7	398.5	398.2	399.2	400.1	401.4	402.4	403.7	404.9	406.4
150°	394.6	394.3	394.2	394.2	394.8	395.4	396.2	396.8	397.7	398.5	399.6
152.5°	386.8	386.5	386.6	386.5	387.1	387.8	388.5	389.1	389.9	390.5	391.5
155°	381.1	380.9	380.6	380.3	380.5	380.7	380.9	381.1	381.6	381.9	382.3
157.5°	377.7	377.3	377.1	376.8	376.8	376.7	376.8	376.8	376.9	376.8	376.9
160°	374.3	373.8	373.3	372.8	373.0	373.0	373.2	373.2	373.5	373.7	373.9
162.5°	374.3	374.0	373.8	373.4	373.2	372.8	372.7	372.3	372.1	371.9	371.8
165°	374.0	373.4	372.9	372.4	372.4	372.3	372.2	372.1	372.0	371.9	372.0
167.5°	376.4	375.7	375.3	374.7	374.3	373.9	373.6	373.1	372.8	372.5	372.3
170°	376.8	376.2	375.8	375.4	375.2	374.9	374.8	374.6	374.5	374.4	374.4
172.5°	380.1	379.6	379.3	378.9	378.7	378.5	378.4	378.3	378.2	378.2	378.2
175°	382.2	382.0	381.9	381.8	381.5	381.3	381.0	380.9	380.8	380.5	380.3
177.5°	383.1	382.8	382.6	382.4	382.3	382.3	382.3	382.3	382.3	382.3	382.2
180°	382.5	382.5	382.5	382.5	382.5	382.5	382.5	382.5	382.5	382.5	382.5



TEST NUMBER: P1444814
 CATALOG NUMBER: EHBR1-30-UNV-TA-L940-UPL30

CANDELA DISTRIBUTION (continued):

	110°	112.5°	115°	117.5°	120°	122.5°	125°	127.5°	130°	132.5°	135°
0°	24483.0	24483.0	24483.0	24483.0	24483.0	24483.0	24483.0	24483.0	24483.0	24483.0	24483.0
2.5°	24496.5	24490.1	24473.1	24464.7	24449.1	24441.2	24429.0	24421.0	24411.2	24403.8	24400.0
5°	25175.2	25143.9	25081.1	25042.4	24974.7	24930.1	24862.7	24813.4	24743.9	24692.6	24626.9
7.5°	26058.3	26010.2	25929.8	25868.8	25774.0	25701.5	25595.1	25509.9	25392.4	25294.7	25174.6
10°	26417.8	26389.8	26353.6	26314.4	26261.9	26210.4	26137.7	26063.6	25965.0	25866.8	25738.5
12.5°	25886.4	25912.9	25965.0	25989.3	26029.1	26042.6	26060.8	26052.3	26036.1	25996.1	25937.9
15°	24381.5	24491.8	24666.1	24786.5	24955.3	25073.9	25230.8	25331.8	25448.2	25517.7	25583.7
17.5°	21906.1	22119.3	22426.8	22672.0	23001.3	23269.0	23597.0	23854.7	24152.2	24380.5	24623.5
20°	18735.4	19034.0	19458.3	19818.8	20295.9	20700.4	21218.8	21652.9	22159.4	22581.6	23037.3
22.5°	15322.9	15674.1	16160.3	16595.0	17164.8	17673.7	18323.0	18897.1	19581.9	20195.2	20873.8
25°	12103.5	12447.7	12943.1	13393.2	14008.2	14568.8	15278.2	15936.8	16731.4	17472.4	18323.0
27.5°	9342.7	9648.5	10083.9	10489.1	11052.4	11602.7	12322.7	13025.1	13872.9	14669.1	15585.9
30°	7215.2	7463.3	7812.2	8138.1	8590.3	9040.4	9681.8	10331.2	11174.9	12000.1	12939.9
32.5°	5591.6	5803.1	6094.4	6358.9	6707.4	7046.7	7519.0	8038.1	8778.1	9568.5	10477.2
35°	4328.5	4509.4	4757.4	4985.2	5271.8	5541.2	5893.7	6264.1	6828.9	7493.7	8306.9
37.5°	3450.9	3524.7	3701.6	3888.3	4126.4	4347.7	4623.4	4897.4	5301.4	5826.0	6490.3
40°	2624.4	2741.6	2885.5	3032.6	3212.8	3390.4	3692.9	3838.5	4104.5	4481.0	4996.7
42.5°	2117.5	2199.9	2301.3	2403.6	2529.1	2652.8	2805.7	2961.6	3160.4	3415.5	3782.3
45°	1772.0	1825.7	1891.1	1959.2	2041.7	2126.0	2228.5	2335.4	2470.3	2627.1	2849.8
47.5°	1541.1	1570.8	1613.5	1660.0	1716.6	1775.0	1841.6	1909.8	1993.5	2086.5	2213.3
50°	1360.9	1385.7	1418.9	1450.0	1489.0	1548.9	1575.3	1613.0	1663.3	1718.0	1788.9
52.5°	1230.6	1247.1	1267.9	1285.8	1310.5	1332.8	1362.3	1388.2	1423.0	1455.9	1501.7
55°	1129.1	1135.0	1146.9	1158.3	1175.4	1190.7	1210.9	1227.8	1250.1	1269.7	1298.6
57.5°	1050.6	1051.2	1056.7	1062.6	1073.6	1083.2	1097.1	1108.3	1123.7	1136.2	1153.6
60°	994.3	991.3	992.4	994.4	1000.7	1006.9	1015.8	1023.0	1032.7	1039.8	1049.6
62.5°	947.4	942.6	941.6	941.1	944.1	946.4	951.2	954.8	960.2	963.3	968.5
65°	888.1	882.6	880.4	877.9	878.8	878.1	879.8	879.9	882.7	883.4	886.4
67.5°	834.4	829.8	827.0	823.6	822.0	819.6	818.5	816.1	815.7	813.7	813.2
70°	785.4	780.9	778.5	775.3	773.7	770.5	768.4	764.4	762.1	758.4	756.3
72.5°	728.7	726.1	725.5	723.2	722.7	720.9	720.1	717.3	715.6	712.4	710.7
75°	669.5	667.3	667.2	665.0	664.8	662.7	662.1	659.1	657.6	654.4	653.0
77.5°	598.9	595.8	594.9	592.3	593.0	591.9	592.8	590.5	589.5	586.4	585.4
80°	519.4	515.4	513.7	510.4	511.3	509.8	511.3	511.1	512.3	509.8	509.3
82.5°	425.2	420.8	420.0	417.7	419.2	419.4	422.8	420.9	421.7	419.3	420.3
85°	309.4	306.1	301.6	301.0	298.0	301.1	297.2	299.8	295.5	298.5	294.5
87.5°	191.8	185.1	181.6	176.7	175.0	170.3	168.4	165.1	166.0	164.5	165.4
90°	93.8	89.3	90.4	87.9	89.7	87.9	90.6	90.0	93.2	92.4	95.9
92.5°	48.8	51.1	55.2	59.6	63.7	67.9	72.0	76.5	80.6	85.0	89.0
95°	60.3	62.4	68.0	73.6	79.3	84.9	90.6	96.1	101.8	107.4	113.0
97.5°	75.7	77.0	82.5	88.2	93.8	99.4	105.1	110.9	116.5	122.1	127.7
100°	86.8	86.9	102.9	118.9	134.8	150.8	166.9	182.8	198.9	214.9	230.9
102.5°	162.2	166.2	206.5	247.0	287.3	327.7	368.1	408.5	448.9	489.4	529.8
105°	359.3	375.2	436.8	498.4	559.9	621.6	683.3	745.0	806.6	868.3	930.0
107.5°	667.2	696.1	751.8	807.6	863.1	918.9	974.7	1030.4	1086.0	1141.8	1197.7
110°	940.8	971.4	1008.7	1046.1	1083.4	1120.7	1158.1	1195.5	1232.9	1270.3	1307.8



TEST NUMBER: P1444814
 CATALOG NUMBER: EHBR1-30-UNV-TA-L940-UPL30

CANDELA DISTRIBUTION (continued):

	110°	112.5°	115°	117.5°	120°	122.5°	125°	127.5°	130°	132.5°	135°
112.5°	1062.9	1082.8	1104.5	1126.3	1148.1	1169.9	1191.6	1213.4	1235.4	1257.3	1279.1
115°	1058.5	1067.9	1076.2	1084.9	1093.3	1102.0	1110.4	1119.2	1127.9	1136.5	1145.2
117.5°	975.8	979.2	980.4	981.9	983.2	984.7	986.2	987.7	989.3	991.0	992.4
120°	852.2	851.2	849.8	848.4	847.1	845.8	844.7	843.5	842.4	841.3	840.0
122.5°	727.3	725.2	723.8	722.6	721.5	720.3	719.1	718.2	717.2	716.2	715.0
125°	617.6	615.4	616.7	618.1	619.5	620.8	622.2	623.7	625.2	626.7	628.3
127.5°	536.7	536.2	539.4	542.7	546.1	549.6	553.0	556.5	559.9	563.6	566.9
130°	484.8	485.9	490.0	494.3	498.6	503.1	507.5	511.9	516.2	520.6	525.0
132.5°	454.5	456.7	460.6	464.9	469.0	473.3	477.5	481.8	485.9	490.3	494.3
135°	437.7	440.5	444.2	448.1	451.9	455.9	459.7	463.7	467.4	471.3	475.0
137.5°	426.7	429.6	432.7	435.7	438.7	442.1	445.1	448.4	451.3	454.5	457.5
140°	422.4	425.2	426.9	428.9	430.7	432.6	434.2	436.2	437.9	439.9	441.6
142.5°	416.8	419.5	420.5	421.8	422.9	424.3	425.5	426.7	427.8	428.8	430.0
145°	413.3	415.2	415.3	415.6	415.9	416.2	416.3	416.4	416.5	416.7	416.8
147.5°	407.8	409.3	409.0	409.1	409.0	408.8	408.7	408.6	408.3	408.3	408.2
150°	400.4	401.5	401.0	400.7	400.1	399.9	399.3	399.0	398.5	398.2	397.6
152.5°	392.2	393.2	392.4	392.1	391.5	391.0	390.4	390.0	389.3	388.9	388.4
155°	382.5	383.0	382.6	382.3	382.1	381.8	381.4	381.3	381.1	380.9	380.7
157.5°	377.0	377.1	376.9	376.8	376.5	376.4	376.3	376.2	376.1	376.2	376.2
160°	374.0	374.2	374.0	373.8	373.6	373.4	373.3	373.3	373.2	373.4	373.4
162.5°	371.5	371.4	371.2	371.0	370.9	370.8	370.7	370.8	370.8	370.9	371.0
165°	372.1	372.3	371.7	371.5	371.3	371.0	370.7	370.5	370.5	370.4	370.3
167.5°	372.0	371.8	371.8	371.9	371.9	372.0	372.1	372.5	372.6	372.9	372.9
170°	374.3	374.4	374.1	374.1	373.9	373.8	373.8	373.7	373.6	373.6	373.5
172.5°	378.2	378.2	377.8	377.4	377.1	376.9	376.5	376.2	375.9	375.6	375.3
175°	380.0	379.8	379.6	379.5	379.3	379.0	378.9	378.5	378.3	378.2	378.0
177.5°	382.1	381.9	381.8	381.8	381.7	381.6	381.6	381.5	381.5	381.5	381.3
180°	382.5	382.5	382.5	382.5	382.5	382.5	382.5	382.5	382.5	382.5	382.5



TEST NUMBER: P1444814
 CATALOG NUMBER: EHBR1-30-UNV-TA-L940-UPL30

CANDELA DISTRIBUTION (continued):

	137.5°	140°	142.5°	145°	147.5°	150°	152.5°	155°	157.5°	160°	162.5°
0°	24483.0	24483.0	24483.0	24483.0	24483.0	24483.0	24483.0	24483.0	24483.0	24483.0	24483.0
2.5°	24395.0	24394.8	24392.4	24393.6	24394.0	24395.7	24397.8	24400.0	24400.4	24402.1	24402.5
5°	24577.6	24517.3	24472.7	24423.6	24386.7	24353.4	24331.3	24313.7	24306.9	24308.6	24312.7
7.5°	25072.7	24948.2	24845.3	24728.5	24631.0	24527.8	24442.3	24360.9	24301.7	24257.5	24232.8
10°	25616.0	25464.2	25319.1	25150.0	24989.5	24818.3	24663.2	24507.0	24376.9	24263.8	24180.8
12.5°	25857.1	25749.8	25624.3	25464.7	25293.1	25095.5	24896.0	24682.1	24483.2	24298.5	24149.7
15°	25601.8	25602.0	25556.2	25479.7	25360.4	25202.5	25012.4	24789.5	24554.8	24315.4	24096.6
17.5°	24791.6	24944.4	25029.4	25083.3	25066.7	25008.5	24887.6	24716.4	24497.6	24242.5	23975.6
20°	23400.0	23760.7	24017.7	24248.9	24378.5	24464.5	24456.0	24386.3	24230.5	24013.6	23735.6
22.5°	21450.9	22056.1	22533.6	22978.9	23291.2	23545.3	23666.1	23717.4	23646.7	23495.7	23234.7
25°	19083.4	19906.2	20608.5	21290.0	21801.2	22240.5	22504.6	22690.6	22705.4	22626.4	22393.5
27.5°	16452.6	17423.9	18312.7	19218.5	19937.4	20569.0	20983.4	21286.7	21383.0	21370.4	21158.9
30°	13825.2	14844.9	15824.7	16880.8	17770.4	18577.3	19124.7	19534.9	19693.0	19723.3	19519.8
32.5°	11343.9	12349.5	13326.4	14430.6	15409.6	16334.4	16981.1	17468.4	17652.3	17695.5	17472.4
35°	9092.0	10019.8	10948.1	12018.3	12991.6	13949.2	14630.7	15140.9	15312.6	15341.5	15083.2
37.5°	7139.2	7929.6	8738.6	9698.8	10592.6	11492.0	12139.5	12619.0	12744.0	12736.2	12443.9
40°	5494.9	6109.5	6759.5	7550.0	8293.0	9053.4	9600.1	9996.5	10062.1	10013.5	9706.4
42.5°	4131.8	4575.7	5047.0	5637.0	6188.5	6757.4	7155.2	7449.5	7458.8	7381.9	7106.2
45°	3078.3	3511.3	3708.9	4065.6	4420.8	4799.2	5042.1	5223.8	5195.7	5128.0	4918.5
47.5°	2346.6	2513.0	2689.6	2910.7	3117.7	3547.0	3515.2	3807.1	3596.8	3740.2	3424.6
50°	1863.5	1956.5	2051.6	2169.0	2277.0	2389.3	2459.5	2511.8	2505.0	2482.5	2422.0
52.5°	1585.4	1614.1	1660.9	1727.7	1788.1	1848.8	1888.7	1921.1	1921.8	1912.8	1882.1
55°	1325.0	1361.5	1395.1	1438.8	1513.1	1524.5	1581.8	1570.2	1574.8	1558.8	1575.1
57.5°	1168.3	1189.4	1208.4	1234.4	1255.9	1280.9	1295.7	1310.0	1308.6	1305.5	1290.0
60°	1057.1	1068.9	1079.4	1094.6	1106.3	1120.5	1127.3	1134.6	1132.2	1126.9	1113.0
62.5°	971.5	978.9	984.8	994.6	1001.8	1010.6	1014.2	1017.3	1014.2	1009.2	997.0
65°	887.0	891.8	895.6	903.0	908.0	915.5	918.5	921.4	918.6	914.7	905.4
67.5°	810.8	811.3	810.9	813.9	815.5	820.0	821.3	823.5	820.1	816.8	808.9
70°	753.0	751.8	750.4	751.6	751.8	754.0	754.4	754.0	750.2	744.3	735.7
72.5°	707.9	707.2	706.1	707.1	707.1	709.1	708.5	707.5	702.6	697.1	688.5
75°	649.7	649.4	647.1	647.2	645.4	646.0	643.7	642.4	637.0	632.2	624.7
77.5°	581.8	580.7	577.5	576.3	572.9	571.5	567.0	564.9	559.4	555.5	549.0
80°	506.0	504.8	500.7	498.4	492.9	489.5	483.0	479.2	473.0	469.3	462.9
82.5°	418.2	418.7	414.6	411.8	404.0	398.0	389.2	384.6	377.7	374.1	367.4
85°	297.5	293.2	295.4	295.2	290.4	285.2	278.1	273.2	267.3	263.8	259.3
87.5°	163.1	164.2	162.9	161.9	158.5	155.9	150.4	147.5	143.2	141.1	137.6
90°	89.2	86.6	80.1	77.7	71.5	67.5	60.6	57.3	50.7	49.1	45.1
92.5°	84.2	79.5	74.9	70.0	65.5	60.7	56.0	51.2	46.5	44.7	43.3
95°	106.2	99.4	92.6	85.7	78.9	72.0	65.3	58.4	51.6	50.2	48.8
97.5°	119.7	111.7	103.6	95.6	87.6	79.5	71.5	63.4	55.3	54.5	53.6
100°	212.3	193.8	175.1	156.6	138.1	119.5	101.0	82.5	63.9	62.9	61.8
102.5°	484.7	439.7	394.8	349.8	304.9	259.8	214.9	169.8	124.8	118.3	111.9
105°	861.9	793.7	725.8	657.6	589.5	521.3	453.3	385.0	316.9	295.1	273.2
107.5°	1133.7	1069.6	1005.7	941.7	877.6	813.7	749.5	685.4	621.3	582.8	544.4
110°	1256.9	1206.0	1155.4	1104.6	1053.8	1002.9	952.1	901.3	850.4	817.1	784.2



TEST NUMBER: P1444814
 CATALOG NUMBER: EHBR1-30-UNV-TA-L940-UPL30

CANDELA DISTRIBUTION (continued):

	137.5°	140°	142.5°	145°	147.5°	150°	152.5°	155°	157.5°	160°	162.5°
112.5°	1242.0	1204.7	1167.6	1130.3	1093.2	1055.8	1018.6	981.2	943.9	923.8	903.6
115°	1122.7	1100.4	1078.0	1055.6	1033.2	1010.7	988.3	965.7	943.2	932.6	922.0
117.5°	981.1	969.7	958.3	946.7	935.3	923.7	912.3	900.7	889.2	885.5	881.7
120°	836.8	833.4	829.7	826.3	822.8	819.3	815.7	812.1	808.5	808.9	809.4
122.5°	716.4	717.7	719.2	720.3	721.8	723.0	724.4	725.4	726.7	729.5	732.4
125°	631.6	634.8	638.3	641.5	644.8	648.0	651.4	654.5	657.8	660.6	663.6
127.5°	570.7	574.4	578.2	581.8	585.7	589.3	593.0	596.5	600.3	602.9	605.5
130°	528.2	531.4	534.8	537.8	541.1	544.3	547.4	550.7	553.9	555.8	557.9
132.5°	497.3	500.2	503.2	505.9	508.9	511.7	514.6	517.4	520.4	521.8	523.5
135°	477.4	479.4	481.6	483.6	486.0	488.1	490.3	492.5	494.8	495.8	496.9
137.5°	459.3	461.0	462.8	464.5	466.5	468.2	470.0	471.9	473.9	474.3	475.0
140°	443.4	445.2	447.1	449.0	451.0	452.8	454.9	456.9	459.0	459.4	460.1
142.5°	431.4	432.8	434.3	435.8	437.3	438.8	440.5	442.3	443.9	444.4	445.0
145°	418.6	420.3	422.1	423.8	425.5	427.3	429.5	431.4	433.5	433.7	434.1
147.5°	409.6	411.0	412.6	414.0	415.7	417.2	419.1	420.8	422.7	422.9	423.2
150°	399.3	400.8	402.5	404.0	405.7	407.5	409.5	411.3	413.5	413.9	414.5
152.5°	390.1	391.8	393.5	395.4	397.3	399.2	401.3	403.3	405.5	405.8	406.5
155°	382.4	384.0	385.9	387.8	389.6	391.4	393.4	395.4	397.4	398.2	398.7
157.5°	377.8	379.2	380.9	382.6	384.2	385.9	387.8	389.5	391.4	391.9	392.5
160°	374.8	376.2	377.7	379.2	380.7	382.2	383.7	385.3	386.9	387.5	388.0
162.5°	372.4	373.8	375.4	376.6	378.2	379.6	381.3	382.7	384.3	384.8	385.2
165°	371.4	372.5	373.5	374.5	375.6	376.7	377.9	379.0	380.2	380.7	381.3
167.5°	374.0	374.6	375.5	376.3	377.2	378.1	379.1	379.8	380.9	381.3	381.9
170°	374.3	375.0	375.7	376.6	377.3	378.2	379.0	379.6	380.7	381.1	381.7
172.5°	375.8	376.2	376.8	377.2	377.8	378.2	378.8	379.4	379.9	380.6	381.1
175°	378.3	378.5	378.8	379.0	379.2	379.5	379.8	380.1	380.4	380.9	381.3
177.5°	381.5	381.7	381.9	382.1	382.3	382.5	382.8	383.0	383.3	383.8	384.4
180°	382.5	382.5	382.5	382.5	382.5	382.5	382.5	382.5	382.5	382.5	382.5



TEST NUMBER: P1444814
 CATALOG NUMBER: EHBR1-30-UNV-TA-L940-UPL30

CANDELA DISTRIBUTION (continued):

	165°	167.5°	170°	172.5°	175°	177.5°	180°	182.5°	185°	187.5°	190°
0°	24483.0	24483.0	24483.0	24483.0	24483.0	24483.0	24483.0	24483.0	24483.0	24483.0	24483.0
2.5°	24401.7	24401.5	24400.6	24399.5	24398.4	24399.1	24400.2	24403.0	24407.9	24415.0	24424.2
5°	24316.0	24321.1	24323.9	24324.2	24321.6	24320.1	24322.5	24329.2	24342.7	24365.4	24396.1
7.5°	24226.2	24232.4	24241.8	24248.9	24250.3	24248.5	24248.9	24259.4	24284.4	24328.5	24390.6
10°	24130.3	24112.1	24121.7	24139.3	24153.3	24155.8	24157.6	24170.0	24206.5	24273.2	24372.8
12.5°	24041.8	23984.0	23972.9	23988.8	24010.0	24016.8	24014.9	24020.2	24063.0	24151.3	24290.1
15°	23925.2	23816.6	23779.5	23783.6	23809.8	23819.3	23812.4	23801.9	23843.5	23951.4	24130.9
17.5°	23736.7	23561.6	23493.3	23490.3	23521.0	23529.2	23512.3	23479.6	23520.6	23655.3	23878.3
20°	23450.1	23191.5	23063.1	23042.7	23075.9	23066.2	23032.6	22983.2	23037.1	23200.8	23465.9
22.5°	22934.8	22607.2	22387.7	22316.9	22356.8	22330.1	22281.0	22218.1	22289.6	22475.7	22770.9
25°	22092.8	21714.2	21413.8	21245.2	21276.9	21229.3	21175.8	21099.4	21184.8	21398.3	21723.4
27.5°	20855.1	20417.9	20045.5	19766.4	19776.7	19714.3	19652.7	19553.8	19660.4	19913.1	20279.7
30°	19209.3	18703.4	18249.9	17870.6	17836.7	17776.2	17713.1	17583.4	17716.7	18019.2	18447.6
32.5°	17142.5	16580.8	16056.8	15577.3	15486.8	15427.8	15371.6	15222.3	15396.8	15749.6	16241.7
35°	14725.4	14127.1	13559.0	13011.3	12861.5	12802.4	12753.3	12610.2	12828.1	13211.9	13743.4
37.5°	12072.4	11461.2	10897.2	10335.5	10123.7	10043.6	10007.9	9914.2	10165.7	10545.3	11078.9
40°	9348.7	8780.4	8274.8	7778.7	7537.3	7414.7	7396.0	7378.9	7622.0	7951.4	8435.8
42.5°	6800.8	6342.4	5952.5	5573.3	5354.4	5187.0	5186.9	5237.8	5456.6	5703.3	6076.9
45°	4704.3	4396.6	4148.2	3894.8	3962.6	3628.9	3825.0	3724.3	3832.4	3991.5	4234.4
47.5°	3233.7	3065.9	2929.4	2787.8	2684.6	2586.1	2594.7	2658.3	2760.1	2854.5	2980.9
50°	2356.9	2271.4	2201.9	2128.3	2077.0	2033.5	2036.0	2063.5	2117.1	2166.8	2233.0
52.5°	1846.8	1799.6	1761.8	1721.2	1694.2	1672.7	1673.8	1687.1	1716.1	1744.5	1782.4
55°	1522.2	1516.5	1467.4	1430.9	1417.0	1402.5	1405.1	1410.4	1430.1	1446.8	1471.8
57.5°	1275.6	1253.5	1238.8	1219.6	1210.8	1200.6	1202.9	1204.9	1218.0	1229.2	1247.3
60°	1101.5	1085.8	1075.4	1062.4	1056.6	1050.1	1051.5	1052.8	1061.1	1068.4	1081.4
62.5°	985.8	971.8	962.8	952.6	948.6	944.2	945.2	945.5	950.8	956.1	966.0
65°	897.0	886.0	878.4	869.7	865.4	860.9	861.4	861.4	865.8	869.7	877.1
67.5°	803.2	794.9	789.9	783.0	780.2	775.5	775.4	774.0	776.9	778.4	783.4
70°	727.9	719.4	713.2	706.6	702.9	698.8	698.9	699.0	702.4	705.9	712.3
72.5°	681.3	673.3	667.7	661.9	658.5	655.0	654.4	654.0	656.4	658.4	662.7
75°	619.7	613.3	610.0	604.5	601.8	597.9	597.3	595.5	596.7	597.1	600.3
77.5°	545.0	538.9	536.3	530.8	528.4	524.1	523.7	521.6	522.6	521.9	524.3
80°	459.8	454.3	452.8	448.2	447.2	443.1	442.4	440.0	440.7	438.8	439.7
82.5°	364.6	359.6	358.5	354.3	354.3	350.6	350.4	346.7	346.7	343.5	338.5
85°	256.9	253.1	251.6	248.2	247.2	244.2	242.6	239.1	237.8	235.5	234.9
87.5°	135.6	133.2	131.1	129.5	126.5	121.1	120.6	116.9	117.2	114.6	114.8
90°	43.8	40.2	39.0	35.7	34.3	31.7	30.6	31.1	32.1	32.9	34.1
92.5°	41.7	40.2	38.7	37.1	35.5	33.9	32.3	33.9	35.5	37.1	38.7
95°	47.4	46.0	44.6	43.2	41.8	40.4	39.0	40.4	41.8	43.3	44.7
97.5°	52.7	51.8	51.0	50.0	49.2	48.3	47.4	48.4	49.3	50.1	51.1
100°	60.7	59.7	58.6	57.6	56.6	55.4	54.4	55.6	56.7	57.8	58.8
102.5°	105.5	98.9	92.5	86.0	79.5	73.0	66.5	73.0	79.5	86.1	92.6
105°	251.3	229.5	207.5	185.6	163.7	141.7	119.8	141.8	163.8	185.7	207.7
107.5°	505.7	467.3	428.7	390.3	351.5	313.0	274.5	313.1	351.7	390.4	428.9
110°	750.8	717.6	684.4	651.1	617.8	584.6	551.3	584.7	618.0	651.3	684.7



TEST NUMBER: P1444814
 CATALOG NUMBER: EHBR1-30-UNV-TA-L940-UPL30

CANDELA DISTRIBUTION (continued):

	165°	167.5°	170°	172.5°	175°	177.5°	180°	182.5°	185°	187.5°	190°
112.5°	883.4	863.3	843.0	822.8	802.5	782.3	762.0	782.5	802.9	823.3	843.5
115°	911.3	900.6	890.0	879.3	868.6	857.9	847.0	858.1	869.0	879.8	890.7
117.5°	878.0	874.3	870.4	866.7	862.9	859.1	855.2	859.3	863.4	867.5	871.4
120°	809.7	810.3	810.5	810.8	811.2	811.5	811.6	811.8	811.8	811.8	811.7
122.5°	735.1	737.9	740.5	743.3	745.9	748.6	751.0	748.9	746.6	744.5	742.0
125°	666.3	669.3	672.1	674.9	677.6	680.4	682.8	680.8	678.6	676.3	673.9
127.5°	608.1	610.7	613.1	615.8	618.1	620.4	622.6	620.9	619.1	617.1	615.0
130°	559.8	562.0	563.7	565.6	567.4	569.0	570.5	569.6	568.4	567.3	565.8
132.5°	524.9	526.5	527.9	529.4	530.5	531.9	532.7	532.4	531.7	531.1	530.1
135°	498.0	499.0	499.8	500.9	501.6	502.3	502.8	503.0	502.8	502.6	502.2
137.5°	475.5	476.2	476.5	476.8	477.2	477.4	477.4	478.0	478.4	478.9	479.0
140°	460.6	461.3	461.7	462.1	462.5	462.8	462.7	463.5	463.8	464.1	464.2
142.5°	445.6	446.2	446.5	447.0	447.3	447.6	447.6	448.2	448.6	448.9	449.1
145°	434.5	434.8	435.1	435.4	435.4	435.5	435.2	436.1	436.6	437.1	437.6
147.5°	423.5	423.9	424.0	424.2	424.2	424.3	424.1	424.8	425.4	425.9	426.4
150°	415.1	415.7	416.3	416.6	417.0	417.3	417.3	417.8	418.1	418.4	418.5
152.5°	406.9	407.4	408.0	408.3	408.6	408.8	408.9	409.4	409.8	410.2	410.4
155°	399.3	400.0	400.5	401.1	401.4	401.9	402.2	402.6	402.8	403.0	403.2
157.5°	393.0	393.6	394.1	394.6	395.0	395.6	395.9	396.3	396.6	397.0	397.2
160°	388.4	389.1	389.4	390.0	390.5	390.9	391.3	391.7	392.0	392.3	392.7
162.5°	385.7	386.3	386.5	387.1	387.6	388.0	388.4	388.8	389.1	389.5	389.8
165°	382.0	382.6	383.1	383.7	384.4	385.0	385.5	385.7	385.8	386.0	386.1
167.5°	382.4	383.1	383.5	384.1	384.6	385.2	385.8	386.0	386.0	386.1	386.2
170°	382.1	382.6	383.1	383.6	384.1	384.7	385.0	385.1	385.2	385.3	385.4
172.5°	381.6	382.3	382.9	383.7	384.1	384.7	385.2	385.2	385.0	385.0	384.7
175°	381.7	382.3	382.8	383.4	383.7	384.3	384.9	384.6	384.5	384.3	384.1
177.5°	385.0	385.8	386.4	386.9	387.6	388.0	388.7	388.1	387.8	387.3	386.7
180°	382.5	382.5	382.5	382.5	382.5	382.5	382.5	382.5	382.5	382.5	382.5



TEST NUMBER: P1444814
 CATALOG NUMBER: EHBR1-30-UNV-TA-L940-UPL30

CANDELA DISTRIBUTION (continued):

	192.5°	195°	197.5°	200°	202.5°	205°	207.5°	210°	212.5°	215°	217.5°
0°	24483.0	24483.0	24483.0	24483.0	24483.0	24483.0	24483.0	24483.0	24483.0	24483.0	24483.0
2.5°	24437.2	24449.5	24468.2	24485.1	24510.7	24530.8	24561.1	24584.0	24618.1	24640.3	24677.3
5°	24439.5	24487.3	24550.2	24611.5	24685.3	24752.2	24835.4	24906.3	24990.0	25058.2	25143.7
7.5°	24474.0	24566.2	24676.7	24788.1	24914.0	25031.8	25164.5	25284.7	25415.9	25527.1	25648.5
10°	24499.5	24641.7	24804.6	24968.5	25140.9	25301.2	25463.0	25602.8	25733.4	25841.0	25936.0
12.5°	24464.9	24660.8	24869.8	25071.6	25263.4	25429.3	25568.5	25676.1	25750.2	25800.6	25812.4
15°	24347.4	24583.1	24810.4	25011.3	25170.5	25293.2	25356.8	25386.6	25354.6	25301.6	25185.1
17.5°	24127.9	24376.6	24579.7	24738.3	24822.4	24855.7	24803.0	24711.5	24532.6	24333.9	24047.1
20°	23725.6	23957.2	24104.6	24191.0	24168.5	24085.3	23886.6	23645.1	23287.8	22907.1	22404.7
22.5°	23019.7	23222.2	23300.7	23307.2	23169.8	22961.5	22603.1	22188.8	21625.3	21039.4	20318.8
25°	21960.2	22137.6	22150.0	22080.3	21829.0	21491.4	20965.1	20379.1	19613.3	18832.6	17929.6
27.5°	20523.2	20693.3	20651.7	20521.7	20172.9	19721.2	19047.3	18290.3	17346.1	16424.0	15425.2
30°	18716.9	18898.9	18850.0	18683.2	18268.4	17734.3	16941.5	16061.8	15013.7	14028.8	13016.7
32.5°	16555.3	16785.4	16751.5	16593.1	16160.1	15588.7	14728.4	13795.4	12723.0	11752.5	10768.0
35°	14098.3	14377.6	14392.1	14288.5	13886.5	13321.7	12472.2	11569.3	10542.0	9626.3	8716.8
37.5°	11451.2	11775.1	11841.5	11813.5	11480.5	10981.9	10207.9	9397.8	8487.9	7685.2	6907.3
40°	8789.5	9117.3	9230.9	9264.7	9018.9	8632.7	7997.4	7343.6	6601.7	5951.4	5333.8
42.5°	6362.1	6652.7	6762.5	6831.7	6678.2	6420.7	5957.3	5482.5	4939.0	4469.9	4020.2
45°	4418.6	4624.1	4707.7	4777.3	4693.7	4548.5	4255.9	3958.8	3600.1	3293.6	3003.4
47.5°	3089.3	3202.6	3257.8	3291.6	3259.2	3183.4	3024.2	2852.1	2649.6	2470.5	2298.3
50°	2289.8	2350.2	2379.1	2398.5	2375.0	2332.8	2246.7	2153.0	2041.8	1940.3	1841.1
52.5°	1814.7	1849.2	1866.4	1876.9	1863.4	1837.6	1787.5	1731.9	1665.2	1602.5	1569.5
55°	1528.7	1527.0	1566.6	1547.5	1566.6	1523.8	1514.9	1453.8	1398.4	1359.5	1317.3
57.5°	1260.7	1278.7	1286.3	1294.8	1289.3	1281.5	1260.1	1238.3	1209.1	1184.7	1158.6
60°	1091.3	1106.0	1114.4	1122.9	1122.4	1119.5	1107.1	1094.0	1075.8	1061.1	1045.4
62.5°	974.6	987.4	995.6	1003.8	1004.5	1003.3	994.0	984.8	972.5	963.2	952.4
65°	882.7	891.8	897.4	903.8	903.5	901.7	893.3	885.8	875.6	869.1	861.2
67.5°	786.7	793.5	797.9	803.9	805.1	805.5	800.8	797.3	792.3	790.5	787.8
70°	718.4	726.6	733.6	741.3	745.5	747.5	745.5	743.6	740.8	739.5	737.4
72.5°	666.7	673.7	679.1	686.1	690.0	692.8	691.2	690.3	687.7	687.4	685.9
75°	602.4	607.2	610.3	615.5	617.7	620.3	619.1	619.7	618.9	620.9	620.8
77.5°	525.2	528.7	530.2	534.0	534.4	537.6	538.2	541.9	544.6	550.4	553.5
80°	438.2	440.5	440.5	444.4	446.2	451.5	454.1	460.1	462.9	468.2	468.5
82.5°	340.4	337.8	340.4	338.8	343.8	349.8	350.6	355.8	356.9	360.3	357.7
85°	232.7	232.5	230.5	230.9	229.3	230.0	229.1	230.1	229.2	229.3	226.9
87.5°	111.5	112.5	110.0	110.9	108.5	109.7	107.5	109.2	106.7	107.0	103.4
90°	34.9	36.0	36.9	38.0	39.4	42.3	45.4	48.4	51.7	54.5	57.7
92.5°	40.2	41.8	43.4	45.0	46.6	51.3	56.1	60.8	65.7	70.2	75.0
95°	46.1	47.5	48.9	50.5	51.9	58.7	65.6	72.4	79.3	86.1	93.0
97.5°	52.1	53.0	53.8	54.8	55.7	63.8	71.8	79.9	88.0	96.1	104.1
100°	60.0	61.0	62.0	63.3	64.3	82.9	101.5	120.1	138.6	157.2	175.7
102.5°	99.1	105.6	112.2	118.8	125.3	170.4	215.5	260.5	305.4	350.5	395.5
105°	229.7	251.5	273.6	295.6	317.5	385.7	454.0	522.2	590.2	658.4	726.6
107.5°	467.6	506.2	544.9	583.5	622.1	686.3	750.3	814.4	878.6	942.7	1006.6
110°	718.1	751.3	784.8	818.1	851.4	902.3	953.4	1004.1	1055.1	1106.0	1156.8



TEST NUMBER: P1444814
 CATALOG NUMBER: EHBR1-30-UNV-TA-L940-UPL30

CANDELA DISTRIBUTION (continued):

	192.5°	195°	197.5°	200°	202.5°	205°	207.5°	210°	212.5°	215°	217.5°
112.5°	864.0	884.2	904.5	924.8	945.1	982.4	1020.0	1057.3	1094.8	1131.9	1169.2
115°	901.6	912.3	923.1	933.8	944.7	967.3	989.8	1012.4	1035.1	1057.5	1080.1
117.5°	875.4	879.3	883.2	886.9	890.8	902.5	914.2	925.9	937.5	949.2	960.7
120°	811.6	811.4	811.2	810.8	810.6	814.3	818.1	821.7	825.4	829.0	832.5
122.5°	739.6	736.9	734.5	731.8	729.3	728.0	727.1	725.8	724.8	723.5	722.4
125°	671.3	668.7	666.1	663.4	660.6	657.6	654.5	651.3	648.1	645.0	641.8
127.5°	613.0	610.6	608.5	606.0	603.6	600.0	596.4	592.8	589.5	585.6	582.1
130°	564.4	562.7	561.1	559.2	557.7	554.4	551.4	548.3	545.2	542.0	539.1
132.5°	529.3	528.1	527.0	525.5	524.4	521.5	519.1	516.1	513.3	510.5	507.8
135°	501.9	501.2	500.8	499.9	499.2	496.9	495.0	492.8	490.9	488.7	486.7
137.5°	479.1	479.0	478.8	478.6	478.5	476.7	475.0	473.3	471.7	469.8	468.3
140°	464.3	464.2	464.2	464.0	463.8	461.9	460.2	458.4	456.6	454.6	452.9
142.5°	449.1	449.1	449.1	448.9	448.8	447.3	446.0	444.7	443.2	441.8	440.4
145°	437.8	438.0	438.2	438.2	438.4	436.7	435.1	433.2	431.8	430.0	428.5
147.5°	426.8	427.0	427.3	427.4	427.8	426.3	425.0	423.5	422.3	420.8	419.6
150°	418.6	418.7	418.8	418.7	418.7	417.2	415.9	414.3	413.0	411.4	410.1
152.5°	410.5	410.7	410.9	410.9	411.1	409.6	408.2	406.6	405.1	403.4	401.9
155°	403.4	403.5	403.6	403.6	403.6	402.2	400.8	399.3	397.9	396.4	395.0
157.5°	397.3	397.5	397.7	397.8	397.9	396.7	395.5	394.2	393.0	391.7	390.5
160°	392.9	393.2	393.3	393.4	393.6	392.6	391.7	390.5	389.6	388.3	387.2
162.5°	390.1	390.4	390.5	390.6	390.8	389.8	389.0	387.8	386.8	385.6	384.6
165°	386.4	386.3	386.4	386.3	386.3	385.6	385.0	384.3	383.6	382.8	382.1
167.5°	386.4	386.3	386.4	386.3	386.3	385.7	385.5	384.9	384.3	383.8	383.3
170°	385.5	385.5	385.4	385.3	385.3	384.8	384.4	383.8	383.5	382.8	382.3
172.5°	384.6	384.3	384.2	384.0	383.7	383.4	383.1	382.8	382.5	382.2	381.8
175°	383.8	383.6	383.5	383.2	382.9	382.8	382.6	382.5	382.3	382.3	382.1
177.5°	386.4	386.0	385.4	385.0	384.6	384.4	384.3	384.1	384.1	384.0	383.8
180°	382.5	382.5	382.5	382.5	382.5	382.5	382.5	382.5	382.5	382.5	382.5



TEST NUMBER: P1444814
 CATALOG NUMBER: EHBR1-30-UNV-TA-L940-UPL30

CANDELA DISTRIBUTION (continued):

	220°	222.5°	225°	227.5°	230°	232.5°	235°	237.5°	240°	242.5°	245°
0°	24483.0	24483.0	24483.0	24483.0	24483.0	24483.0	24483.0	24483.0	24483.0	24483.0	24483.0
2.5°	24700.3	24547.8	24527.6	24538.3	24563.9	24573.3	24600.8	24608.3	24636.0	24642.8	24669.4
5°	25210.0	25008.3	25018.4	25066.9	25140.3	25184.1	25256.2	25293.9	25362.7	25394.0	25456.4
7.5°	25747.4	25589.0	25638.4	25720.2	25820.6	25890.1	25976.7	26033.2	26107.9	26154.2	26214.0
10°	26011.3	25967.9	26022.3	26086.6	26143.8	26188.7	26225.5	26254.8	26274.1	26292.2	26300.0
12.5°	25810.5	25877.7	25886.9	25880.6	25842.7	25813.8	25748.7	25704.5	25626.0	25578.2	25484.8
15°	25066.1	25213.7	25132.0	25008.2	24827.1	24676.1	24462.9	24304.1	24082.0	23931.5	23708.6
17.5°	23759.7	23946.0	23733.0	23446.6	23082.3	22770.6	22382.5	22074.5	21688.6	21407.9	21047.8
20°	21920.5	22094.6	21714.7	21239.9	20676.4	20202.1	19642.8	19196.6	18676.9	18290.3	17823.7
22.5°	19630.6	19754.6	19219.4	18579.3	17861.4	17268.9	16600.2	16065.2	15472.0	15030.1	14532.6
25°	17097.2	17130.7	16488.6	15751.3	14951.0	14285.2	13571.3	13008.8	12403.8	11955.9	11467.6
27.5°	14540.2	14491.2	13797.2	13015.4	12173.6	11481.5	10785.2	10258.1	9728.2	9324.7	8904.1
30°	12126.8	12008.0	11287.4	10483.8	9666.8	9046.4	8468.3	8045.0	7623.6	7303.4	6965.8
32.5°	9913.6	9745.9	9044.6	8291.7	7603.3	7124.5	6695.8	6375.5	6035.2	5764.8	5481.4
35°	7953.4	7774.7	7153.4	6515.1	5994.0	5641.1	5304.2	5041.4	4752.4	4524.4	4278.2
37.5°	6271.0	6124.5	5604.1	5101.9	4707.7	4434.3	4158.2	3943.5	3704.6	3604.3	3341.3
40°	4841.2	4738.8	4331.9	3961.6	3665.7	3537.2	3257.0	3056.4	2877.9	2730.7	2588.2
42.5°	3776.2	3740.0	3344.0	3055.2	2846.7	2684.9	2528.8	2402.0	2278.6	2177.2	2081.3
45°	2771.2	2742.5	2566.7	2400.0	2258.0	2144.8	2039.3	1952.1	1871.5	1804.6	1743.8
47.5°	2157.9	2148.7	2047.5	1944.2	1854.6	1782.0	1713.5	1655.6	1602.1	1557.4	1542.9
50°	1755.1	1753.9	1694.5	1630.8	1567.0	1525.0	1481.3	1447.0	1412.7	1385.9	1357.6
52.5°	1491.3	1484.9	1444.7	1405.3	1367.5	1339.9	1311.9	1290.1	1267.3	1250.8	1233.2
55°	1283.8	1290.6	1267.4	1243.9	1220.3	1203.1	1183.5	1169.0	1153.5	1143.0	1132.4
57.5°	1139.8	1148.7	1136.6	1123.2	1108.8	1097.6	1084.1	1074.1	1063.7	1057.0	1050.8
60°	1035.0	1044.7	1039.8	1033.1	1024.3	1017.5	1008.9	1003.4	996.7	992.9	989.5
62.5°	946.0	958.3	956.5	953.4	947.7	943.9	939.2	936.8	932.3	930.7	929.0
65°	857.3	871.1	870.8	869.2	866.1	865.0	862.1	861.6	859.3	860.2	860.0
67.5°	787.5	799.4	802.1	804.0	803.9	804.7	804.4	805.6	805.6	807.3	808.4
70°	737.1	745.5	747.5	749.5	750.1	751.7	751.7	752.7	752.4	753.9	754.0
72.5°	686.3	697.2	699.2	700.9	700.9	702.4	701.6	701.3	699.1	698.6	697.2
75°	622.9	637.0	640.0	642.1	642.4	643.7	641.8	640.6	637.0	635.5	633.0
77.5°	556.8	571.4	573.5	574.3	573.1	573.3	569.3	566.6	562.1	560.1	557.7
80°	470.7	492.2	493.9	492.6	489.2	488.6	484.7	482.2	476.6	474.8	472.6
82.5°	358.1	383.4	386.9	388.4	385.7	386.4	382.6	381.2	376.1	375.2	371.8
85°	226.1	251.4	255.6	254.9	252.2	251.5	249.3	250.1	249.6	251.0	251.7
87.5°	103.9	128.3	134.2	132.3	132.0	130.3	126.4	127.8	130.2	131.7	131.8
90°	60.7	71.2	74.1	72.1	67.7	65.4	61.2	59.3	55.4	53.5	49.7
92.5°	79.7	84.5	89.3	85.1	80.9	76.6	72.4	68.1	64.0	59.6	55.5
95°	99.8	106.5	113.3	107.7	102.0	96.3	90.7	85.2	79.6	73.9	68.3
97.5°	112.2	120.0	128.0	122.4	116.7	111.1	105.5	99.8	94.2	88.5	82.8
100°	194.3	212.5	231.0	215.1	199.0	183.1	167.1	151.1	135.2	119.3	103.1
102.5°	440.4	485.2	530.1	489.7	449.2	408.8	368.5	328.0	287.7	247.2	206.8
105°	794.6	862.4	930.4	868.6	806.9	745.3	683.6	622.0	560.3	498.6	437.0
107.5°	1070.7	1134.3	1198.1	1142.3	1086.5	1030.9	975.0	919.3	863.4	807.7	752.0
110°	1207.6	1257.6	1308.3	1270.8	1233.4	1196.0	1158.6	1121.0	1083.7	1046.4	1009.1



TEST NUMBER: P1444814
 CATALOG NUMBER: EHBR1-30-UNV-TA-L940-UPL30

CANDELA DISTRIBUTION (continued):

	220°	222.5°	225°	227.5°	230°	232.5°	235°	237.5°	240°	242.5°	245°
112.5°	1206.5	1242.8	1279.8	1257.7	1235.9	1213.9	1192.1	1170.1	1148.4	1126.5	1104.9
115°	1102.5	1123.7	1145.8	1137.2	1128.5	1119.8	1111.1	1102.6	1093.8	1085.3	1076.8
117.5°	972.3	982.3	993.4	991.7	990.2	988.5	987.0	985.4	984.0	982.5	981.0
120°	836.2	838.1	841.2	842.2	843.4	844.5	845.7	846.8	848.0	849.2	850.5
122.5°	721.1	718.1	716.2	717.3	718.4	719.2	720.3	721.4	722.5	723.6	724.8
125°	638.5	633.3	629.5	628.0	626.6	625.0	623.6	622.0	620.8	619.3	618.0
127.5°	578.5	572.7	568.5	565.0	561.7	558.1	554.6	551.1	547.8	544.2	540.9
130°	536.0	530.5	526.8	522.3	518.2	513.6	509.3	505.0	500.6	496.2	491.9
132.5°	505.0	499.7	496.4	492.2	488.1	483.9	479.8	475.4	471.2	467.0	462.9
135°	484.5	479.9	477.3	473.4	469.7	465.8	462.0	458.2	454.5	450.5	446.8
137.5°	466.6	462.0	459.8	456.7	453.8	450.7	447.7	444.6	441.5	438.3	435.4
140°	451.0	446.4	443.9	442.3	440.6	438.7	437.1	435.3	433.6	431.8	430.0
142.5°	439.0	434.4	432.5	431.4	430.4	429.2	428.4	427.2	426.2	424.8	423.8
145°	426.8	421.7	419.3	419.2	419.3	419.1	419.1	419.0	418.9	418.6	418.5
147.5°	418.1	412.9	410.7	410.9	411.1	411.3	411.7	411.7	412.1	412.2	412.3
150°	408.4	402.7	400.0	400.6	401.0	401.5	402.0	402.6	403.1	403.6	404.1
152.5°	400.2	393.3	390.4	390.9	391.6	392.0	392.7	393.3	394.0	394.6	395.2
155°	393.3	385.9	382.7	382.8	383.1	383.4	383.7	384.0	384.4	384.7	385.1
157.5°	389.0	381.2	378.2	378.2	378.2	378.3	378.4	378.5	378.7	378.9	379.3
160°	386.1	378.3	375.5	375.3	375.5	375.5	375.5	375.5	375.6	375.8	376.1
162.5°	383.3	375.8	373.0	372.8	372.8	372.8	372.8	372.8	372.9	372.9	373.2
165°	381.2	374.7	372.3	372.3	372.5	372.5	372.7	372.8	373.2	373.4	373.8
167.5°	382.5	376.9	374.9	374.6	374.3	374.1	374.1	373.7	373.7	373.5	373.5
170°	381.6	377.1	375.4	375.4	375.5	375.5	375.5	375.5	375.6	375.6	375.8
172.5°	381.4	378.1	376.8	377.0	377.4	377.6	378.0	378.2	378.6	378.9	379.3
175°	381.9	379.8	379.3	379.3	379.5	379.6	379.8	379.9	380.1	380.3	380.7
177.5°	383.7	383.1	382.7	382.7	382.7	382.7	382.7	382.7	382.7	382.8	382.8
180°	382.5	382.5	382.5	382.5	382.5	382.5	382.5	382.5	382.5	382.5	382.5



TEST NUMBER: P1444814
 CATALOG NUMBER: EHBR1-30-UNV-TA-L940-UPL30

CANDELA DISTRIBUTION (continued):

	247.5°	250°	252.5°	255°	257.5°	260°	262.5°	265°	267.5°	270°	272.5°
0°	24483.0	24483.0	24483.0	24483.0	24483.0	24483.0	24483.0	24483.0	24483.0	24483.0	24483.0
2.5°	24674.4	24703.1	24701.0	24727.8	24726.4	24751.8	24746.6	24768.5	24763.6	24782.2	24771.2
5°	25483.8	25538.5	25556.5	25605.9	25616.2	25660.3	25661.2	25696.4	25692.1	25719.6	25704.9
7.5°	26249.4	26300.4	26324.7	26363.1	26382.2	26414.0	26426.4	26452.6	26458.8	26474.2	26473.7
10°	26314.0	26313.8	26325.8	26320.4	26331.1	26324.9	26338.0	26333.3	26352.6	26347.7	26362.2
12.5°	25444.5	25358.3	25326.8	25249.3	25232.3	25165.8	25170.5	25127.9	25148.5	25122.3	25166.9
15°	23576.0	23375.8	23276.9	23102.9	23048.3	22910.7	22899.6	22808.2	22832.9	22785.1	22854.9
17.5°	20814.8	20499.6	20326.7	20072.6	19971.7	19777.2	19738.1	19620.5	19638.7	19579.5	19663.9
20°	17522.7	17141.8	16923.7	16629.8	16498.7	16266.8	16205.2	16073.7	16090.2	16031.2	16126.7
22.5°	14193.0	13794.4	13548.1	13240.1	13072.7	12854.6	12789.1	12656.9	12664.4	12609.1	12700.9
25°	11133.2	10751.0	10511.9	10232.2	10086.8	9886.9	9818.1	9699.5	9706.2	9660.5	9742.9
27.5°	8612.3	8298.7	8098.7	7864.2	7734.0	7569.5	7502.4	7402.7	7402.4	7368.9	7437.8
30°	6730.0	6468.3	6288.8	6084.6	5962.3	5813.8	5749.1	5659.8	5655.9	5632.2	5686.9
32.5°	5269.5	5036.8	4873.0	4693.2	4583.4	4456.1	4394.8	4323.0	4316.4	4295.0	4339.9
35°	4096.4	3900.3	3759.5	3608.2	3619.3	3431.5	3462.7	3316.8	3277.2	3268.6	3302.0
37.5°	3166.0	3014.2	2899.7	2786.5	2709.7	2630.3	2587.6	2549.2	2544.8	2541.1	2564.5
40°	2478.1	2371.9	2288.7	2210.9	2158.1	2109.6	2082.9	2061.8	2056.8	2054.0	2068.2
42.5°	2005.6	1934.0	1880.3	1832.9	1800.8	1774.4	1759.8	1748.0	1744.1	1744.2	1752.6
45°	1694.5	1651.1	1616.5	1587.0	1566.5	1575.5	1549.0	1562.8	1544.5	1563.5	1551.0
47.5°	1492.2	1455.2	1433.8	1412.9	1400.5	1390.6	1390.9	1391.1	1395.0	1395.6	1399.7
50°	1336.2	1314.7	1299.9	1286.6	1280.1	1274.9	1276.6	1278.0	1281.9	1282.1	1285.1
52.5°	1220.6	1206.6	1197.6	1189.3	1186.5	1183.5	1184.8	1184.2	1185.9	1185.1	1187.5
55°	1126.6	1120.0	1117.2	1114.2	1114.6	1113.8	1114.3	1111.4	1109.5	1107.3	1109.3
57.5°	1049.6	1048.7	1050.5	1051.8	1055.4	1056.7	1057.4	1054.0	1050.7	1047.7	1049.5
60°	990.2	991.6	996.3	1000.1	1005.2	1007.6	1009.0	1007.0	1004.6	1002.2	1003.7
62.5°	931.5	933.8	939.4	943.7	949.8	953.0	956.5	956.7	957.6	956.7	957.7
65°	863.4	866.2	871.4	874.9	880.6	883.4	887.0	887.7	889.7	889.3	890.9
67.5°	811.7	814.3	818.5	821.9	827.0	829.9	833.1	833.3	834.0	833.8	835.4
70°	756.6	757.8	761.6	764.4	769.5	772.5	776.2	777.3	779.5	779.9	781.7
72.5°	697.8	697.2	699.5	700.8	704.6	706.9	711.6	714.1	717.9	719.0	720.3
75°	633.7	633.1	635.8	637.0	640.2	642.6	647.8	651.1	657.0	659.5	658.9
77.5°	559.5	560.9	565.9	568.8	573.1	576.1	582.8	588.1	599.0	603.7	598.9
80°	476.6	478.0	483.2	485.9	491.6	495.3	502.8	509.1	518.7	520.8	518.1
82.5°	374.7	375.1	379.8	381.8	389.2	394.6	404.1	409.2	415.1	414.2	413.5
85°	255.6	259.0	264.9	270.7	279.9	288.5	297.6	304.9	299.7	308.0	298.7
87.5°	136.6	136.2	144.2	142.9	155.6	162.9	170.8	174.5	178.7	177.9	177.9
90°	48.2	45.7	45.2	42.5	42.7	39.8	40.6	37.9	39.1	36.0	40.7
92.5°	51.2	49.1	46.7	44.5	42.1	40.0	37.5	35.3	33.0	30.7	33.0
95°	62.7	60.6	58.5	56.3	54.2	52.1	50.0	47.9	45.8	43.7	46.3
97.5°	77.2	76.0	74.8	73.6	72.4	71.1	69.9	68.7	67.4	66.1	67.9
100°	87.2	87.2	87.2	87.2	87.0	87.0	87.0	87.0	87.0	87.0	88.4
102.5°	166.4	162.4	158.4	154.2	150.2	146.2	142.2	138.1	134.1	130.1	136.0
105°	375.4	359.6	343.7	327.9	312.0	296.3	280.4	264.7	248.8	233.1	249.4
107.5°	696.4	667.5	638.6	609.9	581.1	552.3	523.5	494.8	466.0	437.2	463.0
110°	971.7	941.1	910.5	879.9	849.4	818.7	788.3	757.7	727.2	696.7	721.3



TEST NUMBER: P1444814
 CATALOG NUMBER: EHBR1-30-UNV-TA-L940-UPL30

CANDELA DISTRIBUTION (continued):

	247.5°	250°	252.5°	255°	257.5°	260°	262.5°	265°	267.5°	270°	272.5°
112.5°	1083.1	1063.2	1043.4	1023.8	1004.0	984.4	964.6	945.1	925.4	905.7	917.7
115°	1068.2	1058.8	1049.3	1040.0	1030.7	1021.2	1011.8	1002.5	993.2	983.9	984.7
117.5°	979.6	976.4	973.2	970.0	966.9	963.8	960.7	957.7	954.7	951.8	945.1
120°	852.0	852.8	853.7	854.7	855.7	856.9	857.9	859.1	860.3	861.5	852.5
122.5°	726.0	728.2	730.5	732.8	735.2	737.7	740.1	742.7	745.4	748.0	739.1
125°	616.5	618.6	620.8	623.2	625.3	627.9	630.4	633.0	635.6	638.3	630.7
127.5°	537.6	538.2	538.9	539.8	540.5	541.6	542.6	543.8	545.0	546.3	541.6
130°	487.5	486.6	485.7	484.9	484.0	483.4	482.9	482.4	481.9	481.7	479.6
132.5°	458.6	456.6	454.5	452.7	450.8	449.1	447.4	446.0	444.5	443.2	442.5
135°	442.9	440.1	437.4	434.7	432.1	429.8	427.4	425.3	423.2	421.1	421.5
137.5°	432.3	429.6	426.9	424.3	421.6	419.3	416.8	414.6	412.5	410.5	411.3
140°	428.3	425.5	422.8	420.2	417.7	415.3	413.0	410.9	408.6	406.8	407.2
142.5°	422.6	420.3	417.7	415.4	413.1	410.9	408.8	406.9	404.8	403.1	403.7
145°	418.4	416.6	414.8	413.0	411.3	409.7	408.0	406.7	405.3	404.1	404.4
147.5°	412.4	411.2	409.7	408.4	407.0	406.0	404.8	403.8	402.8	401.9	402.0
150°	404.5	403.7	402.8	401.9	401.1	400.3	399.6	398.9	398.3	397.7	397.6
152.5°	395.9	395.1	394.3	393.5	392.8	392.1	391.5	390.9	390.4	389.8	389.7
155°	385.5	385.1	384.8	384.5	384.1	384.0	383.7	383.7	383.4	383.3	383.4
157.5°	379.5	379.4	379.2	379.3	379.2	379.3	379.2	379.4	379.3	379.5	379.6
160°	376.5	376.3	375.9	375.9	375.7	375.5	375.5	375.5	375.4	375.3	375.6
162.5°	373.4	373.7	373.8	373.9	374.1	374.3	374.6	375.0	375.2	375.5	375.8
165°	374.1	374.1	373.9	373.8	373.9	374.0	374.0	374.1	374.1	374.3	374.8
167.5°	373.4	373.7	373.8	374.1	374.3	374.6	374.9	375.4	375.7	376.3	376.7
170°	375.8	375.8	375.8	375.8	375.8	376.0	376.1	376.2	376.3	376.6	376.9
172.5°	379.6	379.6	379.4	379.6	379.4	379.6	379.6	379.6	379.6	379.7	379.9
175°	380.7	381.0	381.2	381.5	381.6	381.7	381.9	382.1	382.3	382.5	382.5
177.5°	382.8	382.9	382.9	382.9	382.9	383.0	383.0	383.0	383.0	382.9	383.1
180°	382.5	382.5	382.5	382.5	382.5	382.5	382.5	382.5	382.5	382.5	382.5



TEST NUMBER: P1444814
 CATALOG NUMBER: EHBR1-30-UNV-TA-L940-UPL30

CANDELA DISTRIBUTION (continued):

	275°	277.5°	280°	282.5°	285°	287.5°	290°	292.5°	295°	297.5°	300°
0°	24483.0	24483.0	24483.0	24483.0	24483.0	24483.0	24483.0	24483.0	24483.0	24483.0	24483.0
2.5°	24789.5	24777.1	24789.8	24776.9	24789.8	24774.3	24784.8	24768.1	24772.4	24755.0	24759.5
5°	25726.8	25707.1	25717.6	25691.9	25694.6	25660.3	25659.7	25619.8	25609.3	25563.8	25543.8
7.5°	26484.7	26478.3	26481.9	26465.4	26463.5	26440.1	26428.9	26395.9	26375.2	26333.3	26304.7
10°	26364.8	26384.1	26389.1	26408.8	26412.9	26432.4	26436.5	26456.0	26460.0	26474.5	26474.7
12.5°	25164.8	25230.4	25246.1	25327.2	25361.3	25454.0	25503.7	25605.9	25666.6	25768.5	25831.1
15°	22853.0	22966.6	23011.8	23170.0	23257.6	23442.3	23558.4	23770.6	23920.3	24145.6	24306.3
17.5°	19671.3	19829.9	19901.5	20116.1	20256.1	20528.8	20725.3	21048.8	21296.4	21655.9	21940.8
20°	16143.0	16319.4	16416.5	16661.3	16826.5	17145.1	17390.5	17788.0	18119.5	18575.0	18964.5
22.5°	12729.6	12897.4	13005.3	13254.4	13440.4	13772.7	14046.9	14466.5	14837.9	15351.2	15818.1
25°	9774.0	9927.7	10025.3	10250.5	10425.2	10730.5	10992.4	11395.9	11759.3	12274.2	12753.1
27.5°	7472.1	7600.8	7694.8	7886.9	8041.0	8299.9	8524.9	8858.4	9171.5	9616.9	10043.4
30°	5720.5	5834.6	5926.1	6093.4	6236.2	6460.8	6658.6	6938.6	7197.8	7552.2	7891.5
32.5°	4371.5	4469.7	4551.2	4697.6	4827.2	5029.4	5207.6	5453.1	5675.5	5976.1	6255.3
35°	3333.1	3526.4	3512.7	3714.7	3747.2	3892.2	4051.3	4265.9	4462.9	4718.5	4956.1
37.5°	2587.0	2641.3	2699.6	2788.9	2882.7	3014.7	3149.1	3411.3	3507.6	3700.7	3897.4
40°	2086.1	2122.8	2161.3	2221.7	2287.4	2380.4	2478.2	2603.3	2731.6	2888.2	3048.2
42.5°	1763.7	1784.5	1809.0	1844.4	1884.9	1943.9	2009.3	2094.2	2183.3	2293.5	2406.1
45°	1575.7	1565.8	1573.1	1592.2	1616.6	1652.4	1693.7	1746.3	1804.3	1875.7	1951.8
47.5°	1400.5	1404.5	1406.7	1417.0	1430.1	1454.1	1479.2	1514.9	1583.7	1604.7	1646.1
50°	1284.8	1286.7	1286.1	1291.4	1298.0	1313.6	1329.8	1354.0	1378.1	1410.0	1440.5
52.5°	1187.8	1190.5	1190.2	1193.6	1197.2	1207.0	1217.3	1234.4	1250.2	1270.5	1288.0
55°	1111.3	1115.0	1116.4	1119.4	1121.0	1126.3	1130.3	1138.5	1145.2	1156.7	1167.4
57.5°	1052.4	1057.4	1059.8	1060.8	1058.7	1058.4	1057.0	1058.8	1060.2	1066.4	1072.3
60°	1006.0	1010.1	1010.7	1010.1	1006.3	1003.6	999.2	997.8	997.1	1000.1	1003.4
62.5°	957.5	958.9	957.9	956.7	952.4	949.7	945.2	943.6	942.0	944.1	945.8
65°	890.3	891.6	890.3	889.6	885.7	883.6	879.8	878.5	876.3	876.9	876.5
67.5°	835.8	837.1	836.1	835.0	832.3	831.0	828.2	826.5	823.8	822.8	821.0
70°	781.5	782.4	780.9	779.9	776.8	775.6	773.0	772.4	770.4	769.9	767.9
72.5°	719.0	719.0	716.8	716.2	713.9	713.8	712.7	713.7	713.6	714.8	714.3
75°	654.9	654.0	651.3	650.8	649.2	649.9	648.8	650.3	650.5	652.9	653.1
77.5°	590.8	587.5	582.4	579.9	576.4	576.0	574.0	575.4	574.9	577.6	578.7
80°	510.0	505.9	499.3	496.1	492.0	491.3	489.5	491.3	490.4	493.6	495.9
82.5°	407.1	403.6	396.7	394.2	389.4	389.9	387.9	389.9	389.6	394.4	397.1
85°	301.2	298.8	291.7	285.5	278.5	274.4	270.4	269.7	268.5	270.4	272.0
87.5°	173.9	171.8	166.2	162.6	150.4	150.9	146.1	145.8	144.6	143.6	146.1
90°	40.7	44.9	45.1	48.8	49.5	53.8	54.6	58.8	59.3	63.6	64.8
92.5°	35.3	37.5	39.9	42.1	44.4	46.7	49.0	51.2	56.2	60.9	66.0
95°	48.9	51.6	54.2	56.8	59.4	62.1	64.7	67.4	74.5	81.7	88.9
97.5°	69.8	71.4	73.1	74.9	76.7	78.4	80.1	81.9	89.7	97.5	105.2
100°	89.8	91.2	92.6	94.1	95.5	96.9	98.3	99.7	114.8	129.7	144.6
102.5°	142.0	147.9	153.9	159.9	165.9	171.9	177.9	183.8	218.1	252.3	286.5
105°	265.7	282.0	298.4	314.8	331.1	347.4	363.8	380.1	434.9	489.7	544.5
107.5°	488.8	514.5	540.4	566.3	592.1	617.9	643.7	669.6	723.0	776.5	829.9
110°	745.8	770.5	795.0	819.7	844.2	868.9	893.4	918.2	950.4	982.3	1014.5



TEST NUMBER: P1444814
 CATALOG NUMBER: EHBR1-30-UNV-TA-L940-UPL30

CANDELA DISTRIBUTION (continued):

	275°	277.5°	280°	282.5°	285°	287.5°	290°	292.5°	295°	297.5°	300°
112.5°	929.7	941.6	953.6	965.7	977.7	989.8	1001.8	1013.9	1029.9	1045.9	1061.9
115°	985.4	986.1	987.0	987.7	988.6	989.4	990.4	991.4	996.5	1001.5	1006.5
117.5°	938.5	931.9	925.5	918.9	912.5	906.1	899.8	893.4	892.4	891.4	890.5
120°	843.9	835.0	826.3	817.4	808.9	800.2	791.6	783.1	778.8	774.5	770.2
122.5°	730.3	721.6	712.9	704.1	695.6	687.1	678.7	670.3	667.2	664.2	661.3
125°	623.4	616.1	608.8	601.6	594.6	587.6	580.7	573.8	573.7	573.3	573.4
127.5°	537.1	532.6	528.2	524.1	519.9	515.7	511.7	507.6	509.5	511.4	513.3
130°	477.6	475.7	473.9	472.1	470.5	468.9	467.3	465.8	469.2	472.4	475.9
132.5°	442.3	442.0	441.8	441.6	441.7	441.7	442.0	441.9	445.8	449.6	453.5
135°	421.9	422.5	423.3	424.0	425.0	425.8	426.9	427.8	431.6	435.2	438.9
137.5°	412.2	413.1	414.2	415.1	416.5	417.7	419.1	420.5	423.3	426.2	429.2
140°	408.1	408.6	409.6	410.6	411.6	412.4	413.7	414.8	417.3	419.5	421.8
142.5°	404.5	404.9	405.8	406.8	407.8	408.6	409.7	410.6	412.3	414.0	416.0
145°	405.0	405.5	406.2	406.7	407.3	408.1	408.9	409.6	410.9	411.8	412.9
147.5°	402.4	402.7	403.1	403.6	404.1	404.6	405.1	405.5	406.3	406.9	407.7
150°	397.8	397.9	398.1	398.2	398.6	398.8	399.2	399.4	400.0	400.6	401.4
152.5°	389.9	389.9	390.1	390.3	390.5	390.7	390.9	391.2	391.9	392.2	392.9
155°	383.7	384.0	384.4	384.7	385.1	385.3	385.8	386.0	386.4	386.8	387.3
157.5°	380.0	380.2	380.7	380.9	381.3	381.5	381.9	382.2	382.6	382.9	383.3
160°	376.2	376.8	377.2	377.7	378.2	378.6	379.2	379.7	380.1	380.4	380.8
162.5°	376.2	376.6	376.9	377.2	377.5	377.9	378.2	378.5	379.2	379.6	380.2
165°	375.4	375.8	376.5	376.8	377.3	377.9	378.3	378.9	379.2	379.6	379.8
167.5°	377.2	377.6	378.2	378.6	379.1	379.6	380.1	380.6	380.9	381.1	381.5
170°	377.3	377.8	378.2	378.6	379.1	379.5	379.9	380.3	380.9	381.2	381.8
172.5°	380.3	380.7	381.0	381.2	381.6	382.1	382.4	382.7	383.2	383.6	383.9
175°	382.5	382.5	382.6	382.7	382.8	382.8	382.9	383.1	383.2	383.3	383.4
177.5°	383.3	383.5	383.7	383.7	383.9	384.1	384.3	384.5	384.5	384.5	384.5
180°	382.5	382.5	382.5	382.5	382.5	382.5	382.5	382.5	382.5	382.5	382.5



TEST NUMBER: P1444814
 CATALOG NUMBER: EHBR1-30-UNV-TA-L940-UPL30

CANDELA DISTRIBUTION (continued):

	302.5°	305°	307.5°	310°	312.5°	315°	317.5°	320°	322.5°	325°	327.5°
0°	24483.0	24483.0	24483.0	24483.0	24483.0	24483.0	24483.0	24483.0	24483.0	24483.0	24483.0
2.5°	24742.2	24743.2	24723.3	24722.1	24703.5	24701.1	24682.9	24677.3	24662.6	24657.2	24642.1
5°	25492.8	25468.5	25412.3	25379.3	25323.8	25287.0	25226.9	25187.8	25129.7	25086.0	25027.7
7.5°	26252.0	26214.3	26151.2	26100.1	26023.1	25961.6	25871.4	25797.6	25700.0	25615.5	25512.9
10°	26474.7	26468.9	26452.8	26429.4	26393.5	26353.3	26292.0	26228.0	26142.4	26049.5	25935.5
12.5°	25926.9	25986.0	26066.6	26114.5	26172.6	26198.2	26222.0	26215.9	26200.3	26153.2	26087.4
15°	24539.0	24705.2	24925.3	25095.9	25292.2	25434.9	25592.4	25690.5	25788.4	25833.6	25861.3
17.5°	22331.3	22646.1	23040.7	23367.8	23745.2	24048.4	24380.7	24630.8	24888.1	25072.4	25239.0
20°	19495.4	19951.5	20509.7	21002.9	21576.4	22074.7	22620.7	23069.0	23531.3	23892.9	24235.0
22.5°	16419.6	16961.2	17636.1	18261.3	19000.5	19664.9	20414.5	21066.8	21748.1	22317.1	22867.3
25°	13394.9	13988.9	14726.9	15424.4	16261.6	17034.4	17923.4	18736.4	19616.9	20381.2	21136.3
27.5°	10633.0	11216.2	11969.6	12712.0	13597.4	14420.8	15373.3	16269.1	17271.6	18196.1	19141.7
30°	8362.9	8857.5	9533.1	10252.3	11125.4	11963.4	12926.2	13847.5	14890.4	15899.7	16964.9
32.5°	6625.7	7002.5	7533.7	8141.7	8947.4	9745.0	10661.8	11551.3	12578.2	13597.8	14705.7
35°	5262.0	5555.9	5960.9	6435.4	7117.7	7805.3	8616.2	9425.0	10383.1	11350.6	12427.4
37.5°	4149.4	4387.9	4705.0	5061.4	5608.7	6173.0	6837.9	7508.5	8341.0	9198.6	10174.5
40°	3240.2	3433.3	3680.2	3946.1	4359.3	4794.1	5308.3	5828.3	6497.1	7198.1	8005.7
42.5°	2545.4	2687.9	2862.3	3056.5	3442.2	3672.9	4021.6	4397.7	4889.5	5398.3	6005.5
45°	2044.2	2141.4	2262.3	2392.7	2571.6	2767.4	3006.2	3256.7	3723.8	3952.9	4322.2
47.5°	1707.1	1772.4	1849.3	1931.4	2036.9	2150.8	2292.5	2437.3	2624.5	2818.7	3046.2
50°	1480.1	1546.4	1572.8	1615.4	1676.5	1741.5	1821.4	1901.2	2001.6	2103.5	2220.6
52.5°	1311.6	1333.2	1362.0	1389.0	1426.8	1500.9	1524.8	1566.6	1622.9	1678.0	1739.5
55°	1182.9	1197.0	1215.7	1232.0	1254.9	1276.7	1308.3	1336.1	1373.7	1406.9	1447.7
57.5°	1082.8	1091.7	1104.7	1115.5	1130.2	1142.6	1161.1	1176.1	1197.7	1216.5	1241.3
60°	1010.0	1016.0	1024.7	1031.7	1041.1	1047.5	1056.8	1063.8	1075.2	1084.7	1098.6
62.5°	950.6	953.6	959.3	963.4	969.5	972.7	977.6	980.7	987.0	991.7	999.5
65°	879.3	879.9	883.8	885.5	890.2	892.0	896.0	897.4	902.6	906.1	912.9
67.5°	820.8	819.2	819.3	817.9	818.5	817.1	817.5	816.1	818.2	819.3	824.4
70°	767.5	765.2	764.4	762.0	761.2	758.7	758.0	755.8	755.5	754.7	756.6
72.5°	715.5	714.9	715.0	713.3	713.1	711.4	711.5	710.4	711.6	712.1	714.5
75°	655.7	655.9	657.0	655.5	656.0	654.5	655.0	653.6	654.4	654.1	656.4
77.5°	582.9	584.6	587.8	587.1	588.1	586.6	587.2	585.4	585.9	584.6	585.5
80°	501.0	504.7	509.0	508.8	510.5	509.4	511.0	509.2	510.0	507.7	507.2
82.5°	403.9	406.9	411.5	411.7	415.7	416.4	420.8	420.6	423.4	421.7	420.4
85°	276.1	278.2	282.2	284.3	288.4	291.0	295.2	297.0	293.9	299.5	295.1
87.5°	144.2	149.5	146.5	153.5	151.9	158.9	157.4	164.0	162.7	168.3	167.6
90°	70.2	71.6	77.1	78.9	85.3	87.7	89.3	86.5	87.9	85.2	86.6
92.5°	70.7	75.8	80.8	85.6	90.6	95.6	90.9	86.4	81.8	77.3	72.7
95°	96.1	103.3	110.5	117.7	124.8	132.0	124.3	116.6	109.0	101.3	93.5
97.5°	112.9	120.6	128.3	136.0	143.8	151.6	142.4	133.3	124.2	115.2	106.1
100°	159.5	174.5	189.4	204.3	219.2	234.1	217.2	200.2	183.3	166.2	149.2
102.5°	320.9	355.1	389.3	423.6	457.8	492.1	456.0	420.1	384.0	348.0	311.8
105°	599.3	654.2	709.0	763.8	818.6	873.6	815.1	756.6	698.2	639.8	581.2
107.5°	883.4	936.9	990.4	1043.8	1097.4	1151.0	1091.7	1032.4	973.1	913.7	854.3
110°	1046.7	1078.8	1111.0	1143.1	1175.2	1207.5	1164.2	1121.0	1077.6	1034.3	991.1



TEST NUMBER: P1444814
 CATALOG NUMBER: EHBR1-30-UNV-TA-L940-UPL30

CANDELA DISTRIBUTION (continued):

	302.5°	305°	307.5°	310°	312.5°	315°	317.5°	320°	322.5°	325°	327.5°
112.5°	1078.0	1094.2	1110.2	1126.5	1142.6	1158.7	1127.8	1096.9	1065.9	1035.0	1003.8
115°	1011.8	1016.9	1022.1	1027.1	1032.3	1037.5	1016.6	995.7	975.0	954.1	933.0
117.5°	889.5	888.8	887.8	887.1	886.1	885.2	873.5	861.9	850.1	838.4	826.7
120°	765.8	761.5	757.2	753.0	748.7	744.3	739.4	734.4	729.4	724.4	719.3
122.5°	658.2	655.4	652.2	649.4	646.2	643.2	641.3	639.5	637.4	635.5	633.4
125°	573.2	573.1	573.0	572.9	572.6	572.5	571.5	570.5	569.4	568.5	567.5
127.5°	515.1	517.2	518.8	520.7	522.5	524.3	524.1	523.8	523.5	523.2	522.9
130°	479.1	482.5	485.7	488.8	492.0	495.4	494.6	494.1	493.6	493.0	492.4
132.5°	457.3	461.1	464.8	468.7	472.3	476.0	475.2	474.7	473.7	473.2	472.3
135°	442.4	446.2	449.6	453.2	456.6	460.1	459.2	458.4	457.3	456.5	455.6
137.5°	432.0	434.9	437.7	440.6	443.2	446.1	445.0	444.1	443.1	442.3	441.3
140°	424.0	426.2	428.4	430.7	432.7	435.0	433.8	432.7	431.5	430.4	429.0
142.5°	417.6	419.2	420.7	422.5	424.1	425.8	424.0	422.5	420.8	419.2	417.7
145°	414.0	415.1	416.2	417.3	418.0	419.2	417.3	415.5	413.6	411.8	409.9
147.5°	408.3	409.0	409.5	410.1	410.5	411.2	409.4	407.7	405.9	404.1	402.3
150°	401.7	402.4	402.8	403.4	403.9	404.5	402.6	400.8	398.8	397.1	395.2
152.5°	393.4	393.9	394.4	394.8	395.3	395.8	393.9	392.4	390.5	388.7	387.0
155°	387.5	387.9	388.1	388.5	388.6	388.9	387.3	386.0	384.5	383.0	381.4
157.5°	383.6	383.9	384.2	384.4	384.6	384.9	383.7	382.6	381.3	380.3	379.1
160°	381.0	381.3	381.6	381.8	382.1	382.1	381.1	380.4	379.4	378.3	377.3
162.5°	380.6	381.0	381.4	381.8	382.2	382.5	381.4	380.4	379.3	378.2	376.9
165°	380.1	380.4	380.7	380.9	381.0	381.2	380.5	379.7	378.9	378.2	377.3
167.5°	381.7	382.1	382.3	382.5	382.6	382.8	382.1	381.3	380.5	379.6	378.8
170°	382.1	382.3	382.8	383.2	383.5	383.7	383.2	382.6	381.9	381.3	380.6
172.5°	384.2	384.5	384.7	385.0	385.2	385.6	385.0	384.3	383.7	383.0	382.3
175°	383.4	383.5	383.7	383.7	383.7	383.7	383.2	382.7	382.2	381.6	381.1
177.5°	384.5	384.5	384.5	384.4	384.4	384.4	384.0	383.7	383.4	383.0	382.5
180°	382.5	382.5	382.5	382.5	382.5	382.5	382.5	382.5	382.5	382.5	382.5



TEST NUMBER: P1444814
 CATALOG NUMBER: EHBR1-30-UNV-TA-L940-UPL30

CANDELA DISTRIBUTION (continued):

	330°	332.5°	335°	337.5°	340°	342.5°	345°	347.5°	350°	352.5°	355°
0°	24483.0	24483.0	24483.0	24483.0	24483.0	24483.0	24483.0	24483.0	24483.0	24483.0	24483.0
2.5°	24636.8	24626.1	24619.2	24610.4	24605.0	24598.2	24593.2	24589.0	24585.6	24582.4	24580.0
5°	24983.2	24928.1	24885.5	24839.2	24801.2	24763.2	24734.0	24709.8	24693.1	24680.5	24673.1
7.5°	25424.3	25323.5	25233.8	25139.5	25054.9	24971.7	24900.0	24838.2	24791.8	24761.8	24743.6
10°	25818.2	25683.2	25549.8	25409.3	25276.1	25146.9	25027.7	24922.8	24839.8	24784.7	24752.4
12.5°	25994.8	25879.8	25743.5	25591.0	25427.8	25262.6	25101.6	24956.5	24834.6	24752.9	24705.7
15°	25839.3	25792.0	25699.6	25581.2	25426.3	25255.5	25066.6	24888.9	24725.4	24619.5	24558.1
17.5°	25333.4	25399.3	25392.2	25346.9	25235.6	25091.8	24899.3	24699.7	24495.3	24353.6	24276.3
20°	24479.7	24686.8	24791.8	24845.8	24802.1	24708.8	24534.4	24332.0	24093.7	23908.7	23795.8
22.5°	23280.1	23645.7	23873.5	24040.2	24075.6	24043.8	23889.8	23697.2	23431.6	23209.3	23042.7
25°	21735.8	22271.4	22631.4	22913.7	23023.3	23051.6	22920.6	22729.1	22433.0	22174.0	21945.1
27.5°	19916.7	20612.8	21093.5	21472.8	21643.9	21718.1	21597.6	21402.1	21051.8	20742.7	20443.7
30°	17869.0	18694.6	19273.4	19728.2	19936.9	20034.9	19906.8	19688.7	19281.2	18909.1	18532.4
32.5°	15677.1	16580.6	17211.3	17705.3	17912.0	18004.3	17836.7	17591.7	17120.6	16682.3	16243.0
35°	13382.3	14294.2	14930.3	15411.0	15584.4	15640.0	15425.6	15142.4	14620.5	14139.5	13660.4
37.5°	11040.7	11889.2	12467.3	12898.7	13006.0	13015.6	12757.3	12444.5	11896.0	11421.7	10944.8
40°	8719.4	9435.0	9901.7	10247.0	10284.2	10251.0	9970.3	9655.5	9142.3	8717.4	8298.7
42.5°	6532.8	7073.0	7405.9	7642.6	7628.5	7562.9	7305.5	7034.9	6611.5	6287.9	5958.4
45°	4659.5	5015.7	5210.4	5348.9	5304.4	5241.9	5041.5	4851.9	4564.1	4355.1	4133.7
47.5°	3237.0	3662.3	3588.3	3859.1	3625.8	3779.9	3459.0	3282.1	3129.4	3018.3	2893.2
50°	2317.4	2414.9	2462.0	2494.1	2477.1	2453.3	2395.7	2344.2	2274.4	2223.6	2164.3
52.5°	1789.7	1838.4	1865.1	1884.4	1880.6	1872.0	1846.9	1823.9	1791.3	1769.8	1743.8
55°	1516.0	1516.6	1565.7	1544.7	1575.8	1539.4	1553.7	1513.3	1519.9	1485.1	1461.8
57.5°	1259.7	1279.7	1288.7	1297.3	1294.9	1293.4	1283.6	1278.8	1267.8	1264.4	1256.6
60°	1108.1	1118.5	1120.7	1124.7	1121.3	1120.0	1112.5	1109.7	1102.3	1101.0	1095.8
62.5°	1004.1	1009.4	1009.4	1009.4	1005.1	1001.0	992.5	988.0	981.8	980.4	977.4
65°	917.4	922.9	923.8	924.9	921.8	918.5	911.1	906.3	899.9	897.4	893.9
67.5°	827.8	833.7	835.7	838.7	836.9	836.2	831.1	829.3	825.0	823.9	820.8
70°	757.4	759.9	759.8	759.7	755.7	752.1	746.2	743.5	739.0	738.0	735.2
72.5°	715.6	717.4	716.2	714.8	709.5	704.3	697.4	692.3	686.5	682.9	678.8
75°	656.7	659.0	657.6	656.5	652.0	648.5	642.9	640.1	636.0	634.9	632.0
77.5°	584.4	585.5	583.2	582.9	579.4	577.2	573.0	572.3	569.3	569.3	566.6
80°	503.9	503.3	499.5	498.8	495.3	494.3	491.1	491.3	488.9	489.9	488.0
82.5°	414.7	412.4	407.4	405.9	401.9	401.5	399.3	401.2	399.7	401.9	400.6
85°	297.2	297.8	295.6	295.6	294.4	294.8	294.6	296.0	296.2	298.1	298.0
87.5°	165.6	168.1	167.6	169.7	169.7	172.2	172.9	176.5	177.0	180.4	180.4
90°	83.9	85.6	82.8	84.8	83.6	86.5	86.0	88.9	87.8	90.2	88.4
92.5°	68.1	63.5	59.1	54.4	52.2	49.7	47.8	45.1	43.0	40.5	38.3
95°	85.8	78.2	70.4	62.7	60.1	57.4	54.7	52.1	49.5	46.9	44.2
97.5°	97.0	87.9	78.7	69.6	67.3	65.0	62.6	60.4	58.0	55.8	53.5
100°	132.2	115.2	98.3	81.1	79.2	77.3	75.4	73.4	71.6	69.5	67.5
102.5°	275.8	239.7	203.6	167.4	160.6	153.7	146.9	139.9	133.1	126.2	119.4
105°	522.7	464.1	405.6	347.0	328.4	309.9	291.2	272.6	254.0	235.4	216.8
107.5°	795.0	735.4	676.1	616.7	582.4	548.0	513.6	479.1	444.9	410.4	376.0
110°	947.8	904.3	860.9	817.4	789.9	762.2	734.5	706.7	679.2	651.3	623.6



TEST NUMBER: P1444814
 CATALOG NUMBER: EHBR1-30-UNV-TA-L940-UPL30

CANDELA DISTRIBUTION (continued):

	330°	332.5°	335°	337.5°	340°	342.5°	345°	347.5°	350°	352.5°	355°
112.5°	972.8	941.8	910.8	879.6	867.1	854.5	842.0	829.4	816.9	804.2	791.6
115°	912.1	891.2	870.2	849.0	844.6	840.2	835.8	831.2	826.8	822.3	817.7
117.5°	815.0	803.2	791.3	779.5	780.3	780.9	781.7	782.2	782.9	783.3	784.0
120°	714.3	709.3	704.2	699.1	703.0	706.7	710.5	714.0	717.7	721.2	724.8
122.5°	631.5	629.4	627.5	625.3	630.0	634.5	639.0	643.5	647.9	652.1	656.4
125°	566.5	565.4	564.4	563.2	567.8	572.4	577.0	581.3	585.9	590.1	594.4
127.5°	522.7	522.4	522.0	521.6	525.1	528.1	531.5	534.5	537.7	540.4	543.4
130°	491.7	491.1	490.6	490.0	492.9	495.9	498.9	501.4	504.3	506.7	509.2
132.5°	471.7	470.9	470.2	469.4	471.5	473.6	475.7	477.5	479.3	480.9	482.6
135°	454.7	453.7	452.8	451.8	453.8	455.8	457.6	459.3	461.2	462.6	464.1
137.5°	440.4	439.4	438.4	437.4	439.3	440.9	442.7	444.1	445.6	447.0	448.3
140°	428.0	426.8	425.8	424.5	426.0	427.4	429.0	430.3	431.7	432.7	434.0
142.5°	416.1	414.3	413.0	411.2	412.3	413.4	414.5	415.4	416.4	417.2	417.9
145°	408.1	406.1	404.3	402.4	403.3	404.1	405.0	405.8	406.4	406.9	407.6
147.5°	400.6	398.7	396.8	394.9	395.8	396.3	396.8	397.3	397.9	398.3	398.6
150°	393.3	391.3	389.3	387.4	387.9	388.4	388.8	389.3	389.8	390.1	390.4
152.5°	385.1	383.3	381.5	379.6	379.9	380.3	380.6	380.9	381.3	381.6	381.8
155°	379.8	378.2	376.7	375.1	375.5	375.8	376.0	376.3	376.5	376.7	376.8
157.5°	377.9	376.4	375.4	374.0	374.1	374.1	374.3	374.1	374.1	374.1	374.0
160°	376.4	375.2	374.1	373.0	373.0	373.0	373.2	373.0	372.9	372.8	372.7
162.5°	375.6	374.4	373.1	371.8	371.8	371.9	371.9	371.8	371.7	371.5	371.4
165°	376.5	375.5	374.6	373.6	373.5	373.3	373.2	372.9	372.8	372.4	372.1
167.5°	377.9	377.0	376.0	375.1	375.2	375.3	375.3	375.2	375.1	374.9	374.9
170°	379.9	379.1	378.4	377.6	377.4	377.3	377.1	376.9	376.7	376.5	376.2
172.5°	381.5	380.8	380.0	379.1	379.1	379.0	378.8	378.7	378.5	378.3	378.2
175°	380.5	379.9	379.3	378.7	378.6	378.5	378.4	378.3	378.2	378.1	377.9
177.5°	382.2	381.9	381.3	380.9	380.9	380.9	380.8	380.7	380.7	380.6	380.5
180°	382.5	382.5	382.5	382.5	382.5	382.5	382.5	382.5	382.5	382.5	382.5



TEST NUMBER: P1444814
 CATALOG NUMBER: EHBR1-30-UNV-TA-L940-UPL30

CANDELA DISTRIBUTION (continued):

	357.5°	360°
0°	24483.0	24483.0
2.5°	24577.8	24576.5
5°	24669.2	24667.7
7.5°	24738.7	24738.3
10°	24746.8	24751.1
12.5°	24697.6	24701.0
15°	24553.3	24560.0
17.5°	24277.7	24286.5
20°	23802.7	23811.9
22.5°	23033.6	23037.5
25°	21915.5	21899.6
27.5°	20391.1	20363.8
30°	18453.3	18426.8
32.5°	16142.8	16126.3
35°	13542.0	13531.6
37.5°	10803.8	10782.7
40°	8145.7	8083.8
42.5°	5814.1	5705.6
45°	4018.1	3889.3
47.5°	2805.0	2725.4
50°	2126.1	2100.5
52.5°	1732.4	1726.4
55°	1461.8	1459.1
57.5°	1258.4	1257.4
60°	1098.6	1098.3
62.5°	979.4	979.9
65°	895.5	895.7
67.5°	821.6	821.1
70°	736.3	735.6
72.5°	677.4	676.5
75°	632.0	631.5
77.5°	567.5	566.4
80°	489.2	488.0
82.5°	402.4	401.0
85°	300.2	300.3
87.5°	183.6	183.5
90°	90.6	88.4
92.5°	36.1	34.1
95°	41.6	38.9
97.5°	51.2	48.9
100°	65.7	63.7
102.5°	112.5	105.7
105°	198.3	179.6
107.5°	341.6	307.3
110°	595.9	568.2



TEST NUMBER: P1444814
CATALOG NUMBER: EHBR1-30-UNV-TA-L940-UPL30

CANDELA DISTRIBUTION (continued):

	357.5°	360°
112.5°	778.9	766.3
115°	813.0	808.4
117.5°	784.4	784.8
120°	728.1	731.6
122.5°	660.4	664.5
125°	598.4	602.5
127.5°	546.0	548.6
130°	511.4	513.7
132.5°	484.0	485.3
135°	465.2	466.4
137.5°	449.2	450.3
140°	434.7	435.5
142.5°	418.5	419.1
145°	408.0	408.3
147.5°	398.6	398.8
150°	390.5	390.6
152.5°	381.8	382.0
155°	376.8	376.9
157.5°	373.7	373.6
160°	372.4	372.3
162.5°	371.2	371.1
165°	371.6	371.3
167.5°	374.6	374.6
170°	375.9	375.7
172.5°	378.0	377.8
175°	377.8	377.7
177.5°	380.5	380.3
180°	382.5	382.5

LM-79-2019: Approved Method: Electrical and Photometric Measurements of Solid-
State Lighting Products

Report Prepared for

Cooper Lighting Solutions

Metalux

Report Number: SP1-2506-472-7

Test Date: 08/04/2025

Luminaire Tested: EHBR-60-L940-N

Data in this report applies to families of products including EHBR-60-L940-N

Test Information

Test Method: LM-79-2019
 Report Number: SP1-2506-472-7
 Test Lab: COOPER LIGHTING SOLUTIONS
 Photometer: SP1 - 76IN SPHERE
 Measurement Geometry: 4π
 Issue Date: 08/05/2025
 Manufacturer: COOPER LIGHTING SOLUTIONS
 Product Line: Metalux
 Catalog Number: **EHBR-60-L940-N**
 Description: Elevate Round Highbay at, 60000 lumens, 4000K 90CRI LEDs with N lens

Spectral Parameters

CCT (K): 3963
 CIE u': 0.2267
 CIE v': 0.5003
 Duv: -0.0016
 CIE x: 0.3810
 CIE y: 0.3738
 CIE z: 0.2453
 Peak Wavelength (nm): 630
 Dominant Wavelength (nm): 580
 Purity: 26.49712
 Rf: 90.7
 Rg: 101

CRI (Ra):	93.4		
R1:	95.2	R9:	66.4
R2:	95.1	R10:	86.6
R3:	93.3	R11:	94.4
R4:	94.5	R12:	75.4
R5:	94.2	R13:	95.0
R6:	92.9	R14:	95.4
R7:	94.0	R15:	92.8
R8:	87.7		



Test Conditions

Stabilization Time: 44M
 Operation Time: 1H 44M
 Sphere Temperature (°C): 25.0

REPORT NUMBER: SP1-2506-472-7

Measurement and Test Equipment			
Instrument	Identification Number	Calibration Date	Calibration Due Date
Photometer	76INCH SPHERE IN0058	6/16/2025	12/16/2025
Power Meter	XITRON INXT2011004	1/21/2025	1/21/2026
AC Power Source	CHROMA 61603 IN0063	10/22/2024	10/22/2025
DC Power Source	AGILENT E3634A IN0208	10/22/2024	10/22/2025
Sphere Thermometer	ONSET IN0085	10/22/2024	10/22/2025
Room Thermometer	ONSET IN0046	10/22/2024	10/22/2025

REPORT NUMBER: SP1-2506-472-7

CIE 1931 Chromaticity Diagram



CIE 1931 Chromaticity Diagram with 2017 ANSI 7-Step and 4-Step Quadrangles



Point lies inside the ANSI 4000K 4-step quadrangle

REPORT NUMBER: SP1-2506-472-7

Photopic Flux vs. Wavelength



Photopic Lumens: NR

λ (nm)	Power W [^] /nm	Lumens (φ/nm)	λ (nm)	Power W [^] /nm	Lumens (φ/nm)	λ (nm)	Power W [^] /nm	Lumens (φ/nm)	λ (nm)	Power W [^] /nm	Lumens (φ/nm)	λ (nm)	Power W [^] /nm	Lumens (φ/nm)
360	0	NR	490	141	NR	620	276	NR	750	5	NR	880	0	NR
365	0	NR	495	167	NR	625	279	NR	755	4	NR	885	0	NR
370	0	NR	500	193	NR	630	1000	NR	760	4	NR	890	0	NR
375	0	NR	505	215	NR	635	628	NR	765	3	NR	895	0	NR
380	0	NR	510	230	NR	640	164	NR	770	3	NR	900	0	NR
385	0	NR	515	243	NR	645	161	NR	775	2	NR	905	0	NR
390	1	NR	520	251	NR	650	137	NR	780	2	NR	910	0	NR
395	2	NR	525	256	NR	655	111	NR	785	2	NR	915	0	NR
400	3	NR	530	262	NR	660	92	NR	790	1	NR	920	0	NR
405	4	NR	535	267	NR	665	76	NR	795	1	NR	925	0	NR
410	6	NR	540	271	NR	670	71	NR	800	1	NR	930	0	NR
415	11	NR	545	276	NR	675	56	NR	805	1	NR	935	0	NR
420	20	NR	550	280	NR	680	47	NR	810	1	NR	940	0	NR
425	37	NR	555	285	NR	685	40	NR	815	1	NR	945	0	NR
430	63	NR	560	290	NR	690	34	NR	820	1	NR	950	0	NR
435	108	NR	565	294	NR	695	29	NR	825	1	NR	955	0	NR
440	186	NR	570	296	NR	700	25	NR	830	0	NR	960	0	NR
445	323	NR	575	298	NR	705	21	NR	835	0	NR	965	0	NR
450	403	NR	580	299	NR	710	18	NR	840	0	NR	970	0	NR
455	293	NR	585	298	NR	715	15	NR	845	0	NR	975	0	NR
460	214	NR	590	296	NR	720	13	NR	850	0	NR	980	0	NR
465	180	NR	595	288	NR	725	11	NR	855	0	NR	985	0	NR
470	132	NR	600	286	NR	730	9	NR	860	0	NR	990	0	NR
475	109	NR	605	282	NR	735	8	NR	865	0	NR	995	0	NR
480	110	NR	610	311	NR	740	7	NR	870	0	NR	1000	0	NR
485	121	NR	615	334	NR	745	6	NR	875	0	NR			

REPORT NUMBER: SP1-2506-472-7

Scotopic Flux vs. Wavelength



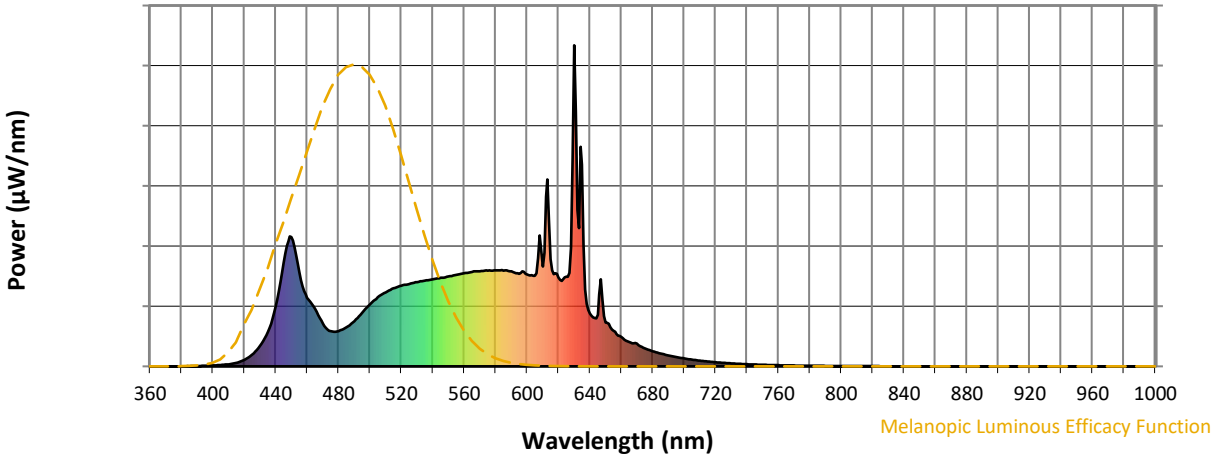
Scotopic Lumens: NR

S/P: 1.76

λ (nm)	Power W [^] /nm	Lumens (φ/nm)	λ (nm)	Power W [^] /nm	Lumens (φ/nm)	λ (nm)	Power W [^] /nm	Lumens (φ/nm)	λ (nm)	Power W [^] /nm	Lumens (φ/nm)	λ (nm)	Power W [^] /nm	Lumens (φ/nm)
360	0	NR	490	141	NR	620	276	NR	750	5	NR	880	0	NR
365	0	NR	495	167	NR	625	279	NR	755	4	NR	885	0	NR
370	0	NR	500	193	NR	630	1000	NR	760	4	NR	890	0	NR
375	0	NR	505	215	NR	635	628	NR	765	3	NR	895	0	NR
380	0	NR	510	230	NR	640	164	NR	770	3	NR	900	0	NR
385	0	NR	515	243	NR	645	161	NR	775	2	NR	905	0	NR
390	1	NR	520	251	NR	650	137	NR	780	2	NR	910	0	NR
395	2	NR	525	256	NR	655	111	NR	785	2	NR	915	0	NR
400	3	NR	530	262	NR	660	92	NR	790	1	NR	920	0	NR
405	4	NR	535	267	NR	665	76	NR	795	1	NR	925	0	NR
410	6	NR	540	271	NR	670	71	NR	800	1	NR	930	0	NR
415	11	NR	545	276	NR	675	56	NR	805	1	NR	935	0	NR
420	20	NR	550	280	NR	680	47	NR	810	1	NR	940	0	NR
425	37	NR	555	285	NR	685	40	NR	815	1	NR	945	0	NR
430	63	NR	560	290	NR	690	34	NR	820	1	NR	950	0	NR
435	108	NR	565	294	NR	695	29	NR	825	1	NR	955	0	NR
440	186	NR	570	296	NR	700	25	NR	830	0	NR	960	0	NR
445	323	NR	575	298	NR	705	21	NR	835	0	NR	965	0	NR
450	403	NR	580	299	NR	710	18	NR	840	0	NR	970	0	NR
455	293	NR	585	298	NR	715	15	NR	845	0	NR	975	0	NR
460	214	NR	590	296	NR	720	13	NR	850	0	NR	980	0	NR
465	180	NR	595	288	NR	725	11	NR	855	0	NR	985	0	NR
470	132	NR	600	286	NR	730	9	NR	860	0	NR	990	0	NR
475	109	NR	605	282	NR	735	8	NR	865	0	NR	995	0	NR
480	110	NR	610	311	NR	740	7	NR	870	0	NR	1000	0	NR
485	121	NR	615	334	NR	745	6	NR	875	0	NR			

REPORT NUMBER: SP1-2506-472-7

Melanopic Flux vs. Wavelength



Melanopic Lumens: NR

M/P: 3.64

λ (nm)	Power W [^] /nm	Lumens (φ/nm)	λ (nm)	Power W [^] /nm	Lumens (φ/nm)	λ (nm)	Power W [^] /nm	Lumens (φ/nm)	λ (nm)	Power W [^] /nm	Lumens (φ/nm)	λ (nm)	Power W [^] /nm	Lumens (φ/nm)
360	0	NR	490	141	NR	620	276	NR	750	5	NR	880	0	NR
365	0	NR	495	167	NR	625	279	NR	755	4	NR	885	0	NR
370	0	NR	500	193	NR	630	1000	NR	760	4	NR	890	0	NR
375	0	NR	505	215	NR	635	628	NR	765	3	NR	895	0	NR
380	0	NR	510	230	NR	640	164	NR	770	3	NR	900	0	NR
385	0	NR	515	243	NR	645	161	NR	775	2	NR	905	0	NR
390	1	NR	520	251	NR	650	137	NR	780	2	NR	910	0	NR
395	2	NR	525	256	NR	655	111	NR	785	2	NR	915	0	NR
400	3	NR	530	262	NR	660	92	NR	790	1	NR	920	0	NR
405	4	NR	535	267	NR	665	76	NR	795	1	NR	925	0	NR
410	6	NR	540	271	NR	670	71	NR	800	1	NR	930	0	NR
415	11	NR	545	276	NR	675	56	NR	805	1	NR	935	0	NR
420	20	NR	550	280	NR	680	47	NR	810	1	NR	940	0	NR
425	37	NR	555	285	NR	685	40	NR	815	1	NR	945	0	NR
430	63	NR	560	290	NR	690	34	NR	820	1	NR	950	0	NR
435	108	NR	565	294	NR	695	29	NR	825	1	NR	955	0	NR
440	186	NR	570	296	NR	700	25	NR	830	0	NR	960	0	NR
445	323	NR	575	298	NR	705	21	NR	835	0	NR	965	0	NR
450	403	NR	580	299	NR	710	18	NR	840	0	NR	970	0	NR
455	293	NR	585	298	NR	715	15	NR	845	0	NR	975	0	NR
460	214	NR	590	296	NR	720	13	NR	850	0	NR	980	0	NR
465	180	NR	595	288	NR	725	11	NR	855	0	NR	985	0	NR
470	132	NR	600	286	NR	730	9	NR	860	0	NR	990	0	NR
475	109	NR	605	282	NR	735	8	NR	865	0	NR	995	0	NR
480	110	NR	610	311	NR	740	7	NR	870	0	NR	1000	0	NR
485	121	NR	615	334	NR	745	6	NR	875	0	NR			

Summary

$R_f = 90.7$
 $R_g = 101$
 $CIE R_a = 93.4$
 $R_9 = 66.4$



Color Vector Graphics

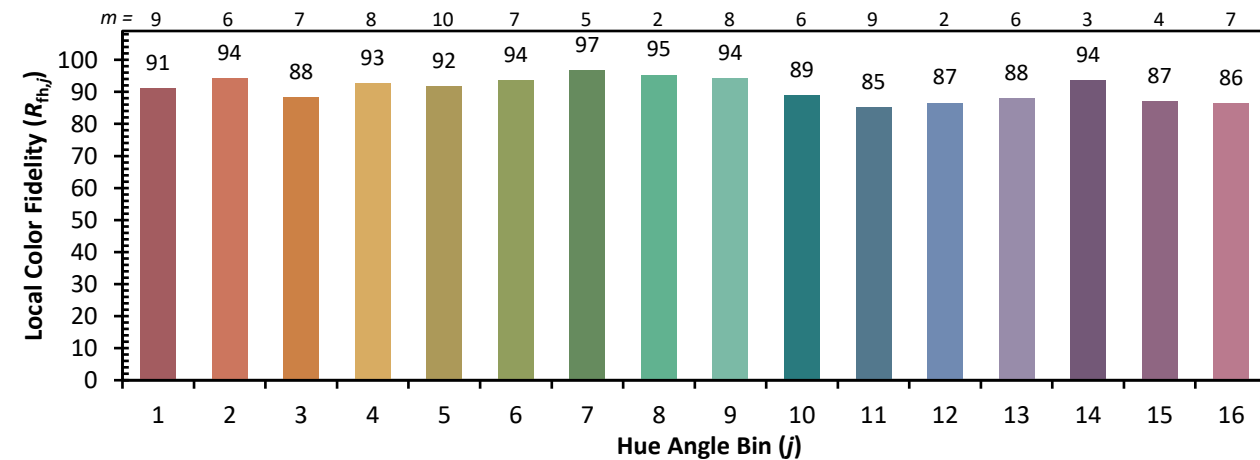
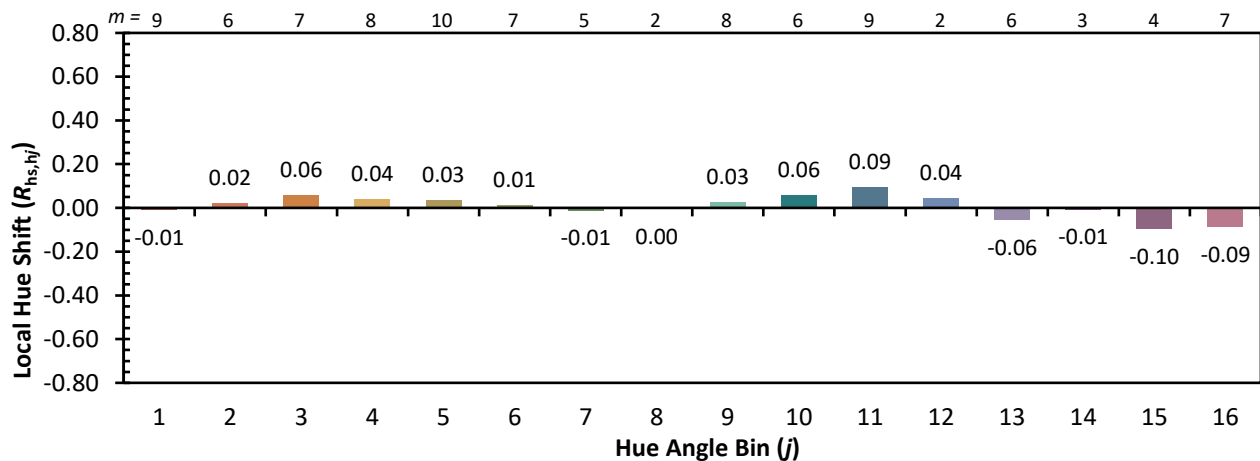
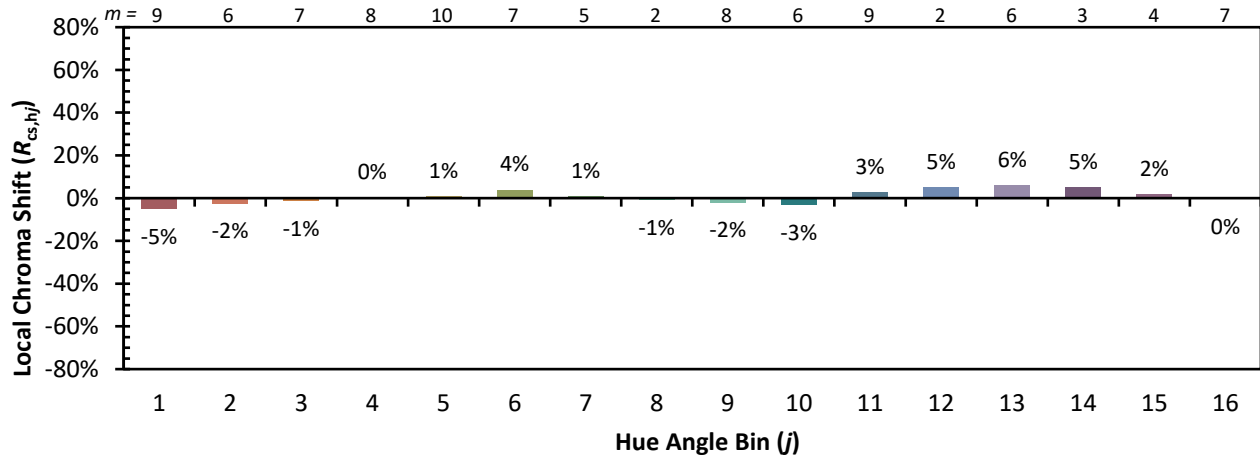


Individual Sample Fidelity Index ($R_{f,i}$)

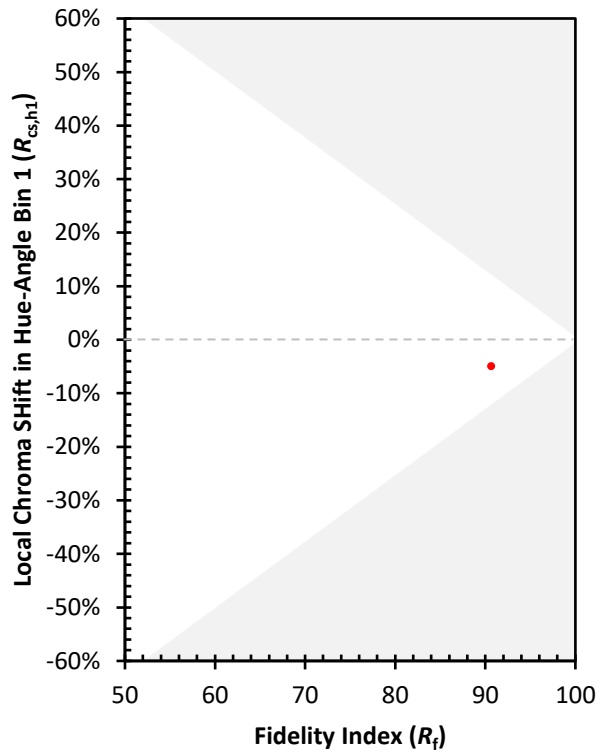
CES01 = 86	CES26 = 90	CES51 = 99	CES76 = 83
CES02 = 62	CES27 = 93	CES52 = 97	CES77 = 87
CES03 = 31	CES28 = 94	CES53 = 95	CES78 = 79
CES04 = 69	CES29 = 91	CES54 = 96	CES79 = 94
CES05 = 49	CES30 = 98	CES55 = 95	CES80 = 91
CES06 = 50	CES31 = 92	CES56 = 95	CES81 = 80
CES07 = 42	CES32 = 84	CES57 = 94	CES82 = 96
CES08 = 41	CES33 = 95	CES58 = 95	CES83 = 95
CES09 = 29	CES34 = 90	CES59 = 98	CES84 = 93
CES10 = 74	CES35 = 94	CES60 = 93	CES85 = 82
CES11 = 57	CES36 = 84	CES61 = 93	CES86 = 84
CES12 = 63	CES37 = 92	CES62 = 90	CES87 = 90
CES13 = 43	CES38 = 93	CES63 = 92	CES88 = 97
CES14 = 74	CES39 = 98	CES64 = 91	CES89 = 84
CES15 = 71	CES40 = 96	CES65 = 88	CES90 = 99
CES16 = 47	CES41 = 98	CES66 = 88	CES91 = 74
CES17 = 49	CES42 = 89	CES67 = 87	CES92 = 78
CES18 = 56	CES43 = 89	CES68 = 87	CES93 = 87
CES19 = 71	CES44 = 99	CES69 = 88	CES94 = 75
CES20 = 66	CES45 = 93	CES70 = 84	CES95 = 83
CES21 = 85	CES46 = 95	CES71 = 80	CES96 = 91
CES22 = 78	CES47 = 92	CES72 = 93	CES97 = 93
CES23 = 91	CES48 = 96	CES73 = 78	CES98 = 93
CES24 = 90	CES49 = 93	CES74 = 92	CES99 = 94
CES25 = 71	CES50 = 99	CES75 = 81	



Color Rendition by Hue-Angle Bin



Measure Comparisons



(END OF REPORT)