

Cooper Lighting Solutions Photometric Lab
1121 Highway 74 South
Peachtree City, GA 30269



Scaled data based on original data using
LM-79-2019 Approved Method: Electrical and Photometric Measurements of Solid-
State Lighting Products

Test Report Prepared for
Cooper Lighting Solutions

Brand: METALUX

Report Number: P1444822

Luminaire Tested: EHBR1-36-UNV-TA-L940-UPL30

Issue Date: 5/1/2026

Test Information

Test Method: LM-79-2019
Report Number: P1444822
REPORT IS A COMBINATION OF REPORTS P1444340 AND P1431635
Test Lab: INNOVATION CENTER
Issue Date: 5/1/2026
Manufacturer: COOPER LIGHTING SOLUTIONS
Product Line: METALUX
Catalog Number: EHBR1-36-UNV-TA-L940-UPL30
Description: Elevate Round Highbay at, 36000 lumens, 4000K 90CRI LEDs with TA lens
Light Source: -
Ballast/Driver: -

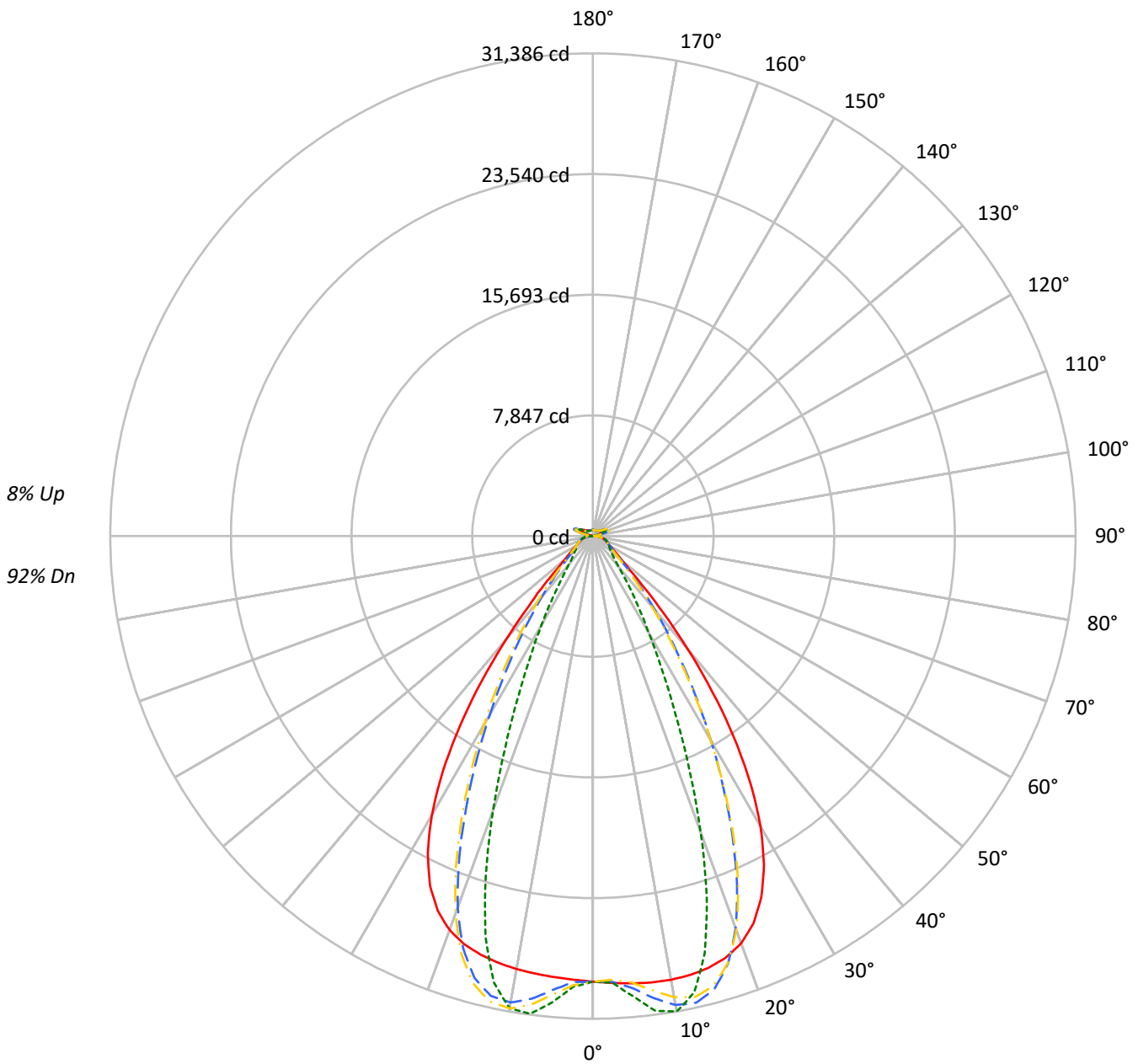
Summary

Lumens per Lamp: N/A
Luminaire Lumens: 36383.6 lumens
Efficiency: N/A
Efficacy: 170.5 lumens/watt
Spacing Criteria (0/90/45): 1.13 / 0.77 / 0.88
Luminous Opening: Vertical Cylinder (Dia: 1.71' x H: 0.1')
CIE Type: Direct

Input Watts (W): 213.4
Input Voltage (V): NR
Input Current (Ain): NR
Voltage Rise (V): NR
Power Factor: NR
Total Harmonic Distortion (THDi): NR
Frequency (hertz): 60
Stabilization Time: NR
Operation Time: NR
Ambient Temperature (°C): NR
Test Distance: 24 FT

TEST NUMBER: P1444822
CATALOG NUMBER: EHBR1-36-UNV-TA-L940-UPL30

Luminous Intensity Polar Plot



— 0°-180° - - 45°-225° - · - · 90°-270° - · - · 135°-315°



TEST NUMBER: P1444822
 CATALOG NUMBER: EHBR1-36-UNV-TA-L940-UPL30

COEFFICIENT OF UTILIZATION - ZONAL CAVITY METHOD:

RF	20				20				20				20				20				
RC	80				70				50				30				10			0	
RW	70	50	30	10	70	50	30	10	50	30	10	50	30	10	50	30	10	50	30	10	0
RCR																					
0	117	117	117	117	113	113	113	113	106	106	106	100	100	100	94	94	94	94	94	94	92
1	110	106	103	101	106	103	101	98	98	96	94	93	91	89	88	86	85	85	85	85	83
2	103	97	92	88	100	95	90	86	90	86	83	86	83	80	82	79	77	77	77	77	75
3	97	89	83	78	94	87	82	77	83	79	75	79	76	73	76	73	71	71	71	71	68
4	91	82	76	71	88	80	74	70	77	72	68	74	70	66	71	68	65	65	65	65	63
5	86	76	69	64	83	74	68	64	72	66	62	69	64	61	67	63	60	60	60	60	58
6	81	71	64	59	79	69	63	58	67	61	57	65	60	56	62	58	55	55	55	55	53
7	76	66	59	54	74	65	58	54	63	57	53	61	56	52	59	54	51	51	51	51	50
8	72	61	55	50	70	61	54	50	59	53	49	57	52	48	55	51	48	48	48	48	46
9	68	58	51	47	67	57	51	46	55	50	46	54	49	45	52	48	45	45	45	45	43
10	65	54	48	44	63	53	47	43	52	47	43	51	46	42	49	45	42	42	42	42	40

AVERAGE LUMINANCE (cd/sqm):

	0°	90°	180°	270°
0°	136054	136054	136054	136054
5°	136712	140699	134799	142542
10°	137854	147723	134548	146745
15°	138530	133909	134312	128518
20°	137097	99758	132610	92300
25°	129769	63091	125479	57244
30°	113362	37913	108971	34649
35°	87245	23790	82226	21074
40°	55190	14923	50494	14023
45°	28446	11626	27975	11435
50°	16677	10341	16166	10180
55°	12776	9784	12304	9696
60°	10811	9995	10351	9865
65°	10154	10437	9766	10082
70°	9920	10928	9426	10518
75°	10607	11591	10034	11077
80°	10976	12835	9953	11715
85°	10338	12386	8353	10605

MAXIMUM LUMINANCE 45°-90°:

Horizontal Angle: 25°
 Vertical Angle: 45°
 Luminance: 43533 cd/sqm



TEST NUMBER: P1444822
 CATALOG NUMBER: EHBR1-36-UNV-TA-L940-UPL30

ZONAL LUMENS:

Zone	Lumens	% Fixture
0°-10°	2855.2	7.8
10°-20°	8032.0	22.1
20°-30°	9147.9	25.1
30°-40°	6575.1	18.1
40°-50°	3032.4	8.3
50°-60°	1451.1	4.0
60°-70°	1058.8	2.9
70°-80°	804.4	2.2
80°-90°	370.9	1.0
90°-100°	86.6	0.2
100°-110°	503.9	1.4
110°-120°	931.0	2.6
120°-130°	568.1	1.6
130°-140°	363.2	1.0
140°-150°	267.8	0.7
150°-160°	185.6	0.5
160°-170°	111.5	0.3
170°-180°	38.0	0.1
0°-30°	20035.1	55.1
0°-40°	26610.2	73.1
0°-60°	31093.7	85.5
0°-90°	33327.8	91.6
90°-120°	1521.5	4.2
90°-150°	2720.6	7.5
90°-180°	3056.0	8.4
0°-180°	36383.6	100.0

CANDELA DISTRIBUTION:

	0°	90°	180°	270°	360°	Flux
0°	28972	28972	28972	28972	28972	
5°	29190	30041	28782	30435	29190	2789
15°	29063	28094	28178	26962	29063	8189
25°	25915	12599	25058	11432	25915	11748
35°	16012	4366	15091	3868	16012	9827
45°	4602	1881	4526	1850	4602	3914
55°	1727	1322	1663	1310	1727	1594
65°	1060	1089	1019	1052	1060	1059
75°	747	816	707	780	747	777
85°	355	426	287	364	355	334
90°	101	127	32	39	101	62
95°	40	44	40	44	40	38
105°	181	234	121	234	181	240
115°	811	985	850	985	811	749
125°	608	640	689	641	608	554
135°	475	423	512	426	475	371
145°	420	409	448	414	420	266
155°	391	393	417	397	391	182
165°	388	388	402	390	388	110
175°	396	400	403	401	396	38
180°	401	401	401	401	401	



TEST NUMBER: P1444822
 CATALOG NUMBER: EHBR1-36-UNV-TA-L940-UPL30

CANDELA DISTRIBUTION (FULL):

	0°	2.5°	5°	7.5°	10°	12.5°	15°	17.5°	20°	22.5°	25°
0°	28971.7	28971.7	28971.7	28971.7	28971.7	28971.7	28971.7	28971.7	28971.7	28971.7	28971.7
2.5°	29082.3	29079.9	29079.5	29077.5	29076.9	29076.9	29076.0	29073.6	29072.1	29068.8	29065.0
5°	29190.2	29188.9	29189.7	29189.9	29187.9	29183.3	29176.3	29167.6	29156.6	29146.3	29137.1
7.5°	29273.7	29275.7	29278.3	29277.7	29271.4	29260.8	29246.3	29238.1	29243.0	29258.7	29294.8
10°	29288.9	29301.4	29306.2	29304.7	29292.1	29282.9	29286.5	29317.1	29378.2	29459.8	29571.2
12.5°	29229.5	29244.8	29244.3	29239.2	29226.9	29239.4	29283.9	29375.3	29506.2	29666.9	29855.5
15°	29062.8	29082.5	29076.9	29070.4	29062.2	29103.1	29192.0	29350.7	29552.9	29779.6	30011.7
17.5°	28739.0	28762.9	28751.3	28743.9	28737.0	28813.7	28966.3	29198.6	29453.4	29709.8	29929.7
20°	28177.5	28193.5	28165.9	28152.9	28163.8	28314.1	28538.8	28835.5	29104.1	29346.6	29496.9
22.5°	27261.1	27280.9	27229.1	27223.1	27287.1	27517.8	27802.2	28133.9	28386.2	28578.4	28636.3
25°	25914.7	25934.1	25872.5	25909.3	26018.3	26332.5	26671.1	27026.0	27241.3	27383.7	27344.4
27.5°	24097.2	24115.1	24056.7	24131.9	24303.9	24716.9	25115.5	25500.4	25692.3	25792.0	25665.6
30°	21805.2	21842.2	21773.2	21878.1	22140.8	22676.9	23133.6	23565.2	23756.6	23832.4	23635.8
32.5°	19082.8	19135.5	19059.4	19215.6	19582.2	20226.1	20744.9	21227.2	21438.8	21525.5	21303.3
35°	16012.5	16088.0	16000.7	16235.0	16687.2	17404.3	17978.7	18517.2	18767.8	18890.7	18666.8
37.5°	12759.4	12831.6	12784.3	13096.9	13593.4	14336.6	14923.0	15503.9	15786.9	15971.3	15794.7
40°	9565.8	9631.7	9667.5	10024.9	10491.9	11192.5	11755.7	12330.4	12647.1	12878.4	12769.6
42.5°	6751.5	6818.1	6939.5	7284.4	7673.9	8253.8	8736.2	9252.3	9554.8	9801.6	9759.6
45°	4602.4	4679.6	4831.9	5114.3	5395.9	5812.0	6166.2	6567.5	6814.6	7040.7	7043.4
47.5°	3225.2	3279.4	3415.4	3608.3	3791.9	4312.7	4334.1	4531.3	4697.5	4866.5	4888.3
50°	2485.5	2518.2	2590.3	2697.9	2801.9	2937.1	3060.8	3203.7	3306.0	3398.6	3420.8
52.5°	2043.0	2063.7	2100.4	2158.6	2219.0	2292.5	2358.7	2437.3	2492.9	2542.5	2552.9
55°	1726.6	1743.9	1798.4	1809.5	1878.6	1891.9	1921.3	1969.1	2001.5	2031.2	2038.5
57.5°	1487.9	1500.4	1512.1	1536.8	1558.1	1589.0	1613.9	1648.2	1668.6	1690.0	1691.9
60°	1299.6	1308.7	1316.9	1334.1	1348.6	1370.1	1387.2	1410.5	1425.1	1441.3	1443.1
62.5°	1159.5	1166.0	1171.5	1182.8	1193.2	1209.6	1223.3	1242.7	1256.3	1268.8	1271.6
65°	1059.8	1064.6	1068.1	1076.7	1085.7	1099.8	1112.2	1128.0	1138.0	1147.6	1149.7
67.5°	971.6	976.1	979.8	987.6	993.9	1004.3	1012.6	1024.5	1032.1	1039.7	1039.9
70°	870.4	874.6	877.4	884.8	889.8	898.9	905.5	916.2	923.9	932.4	934.5
72.5°	800.5	802.9	806.7	813.3	820.3	830.0	838.9	850.0	859.4	868.2	871.9
75°	747.2	750.1	752.6	758.3	763.1	771.2	777.9	788.1	796.3	805.7	810.3
77.5°	670.3	673.7	675.8	681.5	685.7	693.5	698.5	707.6	714.2	722.9	727.1
80°	577.4	580.6	582.1	587.4	590.8	597.9	602.8	611.6	617.2	625.8	630.8
82.5°	474.5	477.5	478.3	483.4	485.2	491.2	494.7	503.6	510.5	521.7	529.5
85°	355.3	356.4	358.1	356.8	364.0	364.5	372.6	374.1	384.9	387.7	399.9
87.5°	217.3	220.4	222.0	226.9	229.1	234.0	235.6	240.8	243.7	249.8	252.6
90°	100.9	106.5	108.7	115.2	117.4	123.3	125.0	131.5	133.8	140.4	143.9
92.5°	34.8	37.1	39.3	41.8	44.2	47.0	49.7	52.2	54.6	57.4	62.0
95°	39.7	42.3	44.9	47.6	50.2	52.8	55.4	58.1	60.7	63.4	71.0
97.5°	49.7	52.1	54.3	56.6	58.9	61.2	63.4	65.8	68.0	70.2	79.4
100°	64.7	66.7	68.6	70.5	72.5	74.3	76.3	78.3	80.1	82.1	99.0
102.5°	107.0	113.8	120.6	127.4	134.3	141.1	148.0	154.7	161.6	168.4	204.3
105°	181.0	199.6	218.2	236.7	255.3	273.9	292.4	310.8	329.3	347.9	406.5
107.5°	308.9	343.2	377.6	412.0	446.4	480.6	515.0	549.3	583.5	617.7	677.1
110°	570.2	597.7	625.4	653.0	680.7	708.3	736.0	763.3	791.1	818.5	862.0



TEST NUMBER: P1444822
 CATALOG NUMBER: EHBR1-36-UNV-TA-L940-UPL30

CANDELA DISTRIBUTION (continued):

	0°	2.5°	5°	7.5°	10°	12.5°	15°	17.5°	20°	22.5°	25°
112.5°	768.7	781.2	793.7	806.2	818.7	831.0	843.5	856.0	868.5	880.8	911.8
115°	811.4	815.7	820.2	824.4	828.9	833.1	837.5	841.7	846.0	850.2	871.2
117.5°	788.4	787.5	786.9	786.0	785.2	784.3	783.5	782.5	781.7	780.6	792.5
120°	735.9	731.9	728.3	724.2	720.3	716.3	712.5	708.4	704.5	700.3	705.3
122.5°	669.5	664.9	660.4	655.5	650.9	646.1	641.4	636.3	631.7	626.8	628.7
125°	608.2	603.5	599.0	594.2	589.4	584.4	579.7	574.7	569.9	564.8	565.7
127.5°	555.2	551.9	548.7	545.0	541.7	538.1	534.5	530.8	527.3	523.5	523.7
130°	521.2	518.3	515.2	512.0	509.0	505.6	502.3	498.9	495.6	492.2	492.6
132.5°	493.5	491.5	489.4	487.1	484.7	482.1	479.8	477.1	474.6	472.1	472.5
135°	475.4	473.5	471.6	469.5	467.3	464.7	462.4	459.9	457.5	454.9	455.7
137.5°	460.2	458.5	456.7	454.5	452.6	450.2	448.1	445.7	443.5	441.0	441.7
140°	446.3	444.7	443.0	441.0	439.3	437.3	435.2	433.0	430.9	428.7	429.6
142.5°	430.5	429.1	427.9	426.3	424.9	423.1	421.5	419.5	417.9	416.0	417.3
145°	420.5	419.3	418.3	417.0	415.6	414.0	412.6	410.9	409.6	408.0	409.2
147.5°	411.5	410.6	409.8	408.7	407.8	406.3	405.1	403.7	402.5	401.2	402.6
150°	403.9	403.0	402.2	401.3	400.1	398.9	397.7	396.6	395.4	394.0	395.4
152.5°	395.6	394.6	393.9	393.0	392.0	390.6	389.7	388.5	387.4	386.2	387.4
155°	390.9	390.1	389.1	388.3	387.3	386.2	385.0	384.0	383.0	381.8	382.7
157.5°	388.3	387.5	386.8	385.9	385.2	384.4	383.6	382.6	381.8	380.9	381.6
160°	387.6	386.8	386.2	385.3	384.5	383.7	382.9	382.0	381.3	380.4	380.9
162.5°	387.0	386.2	385.4	384.7	383.9	383.1	382.3	381.6	380.9	379.9	380.7
165°	387.8	387.4	386.8	386.4	385.8	385.2	384.7	384.0	383.6	382.9	383.3
167.5°	391.8	391.1	390.5	389.8	389.1	388.6	387.8	387.2	386.6	385.8	386.3
170°	393.4	392.9	392.6	392.2	391.9	391.4	391.1	390.6	390.2	389.8	390.2
172.5°	395.8	395.4	395.1	394.9	394.5	394.3	394.0	393.6	393.4	393.0	393.6
175°	396.0	395.7	395.6	395.4	395.2	394.9	394.8	394.6	394.6	394.3	394.6
177.5°	398.8	398.7	398.7	398.6	398.6	398.5	398.4	398.2	398.1	398.1	398.3
180°	401.2	401.2	401.2	401.2	401.2	401.2	401.2	401.2	401.2	401.2	401.2



TEST NUMBER: P1444822
 CATALOG NUMBER: EHBR1-36-UNV-TA-L940-UPL30

CANDELA DISTRIBUTION (continued):

	27.5°	30°	32.5°	35°	37.5°	40°	42.5°	45°	47.5°	50°	52.5°
0°	28971.7	28971.7	28971.7	28971.7	28971.7	28971.7	28971.7	28971.7	28971.7	28971.7	28971.7
2.5°	29062.2	29058.7	29053.8	29047.8	29042.5	29036.4	29021.9	29017.6	29022.4	29025.6	29032.3
5°	29131.3	29133.3	29134.0	29147.3	29158.6	29187.2	29410.0	29498.6	29567.1	29610.6	29676.6
7.5°	29339.5	29406.5	29472.7	29561.9	29638.7	29742.6	30132.5	30298.5	30416.6	30501.3	30605.8
10°	29692.3	29838.6	29975.7	30136.3	30274.4	30432.6	30795.5	30957.3	31059.4	31133.6	31203.0
12.5°	30047.7	30250.5	30433.8	30612.6	30762.1	30899.1	31026.9	31083.4	31088.3	31090.6	31053.8
15°	30232.8	30426.7	30588.3	30706.5	30794.2	30833.2	30613.3	30498.1	30352.4	30232.3	30034.9
17.5°	30116.0	30232.3	30302.1	30295.2	30258.9	30137.3	29514.8	29172.4	28832.5	28526.1	28124.4
20°	29596.6	29587.8	29527.0	29355.1	29148.0	28826.0	27758.7	27142.8	26547.5	26024.6	25390.2
22.5°	28630.4	28478.4	28266.4	27895.8	27484.0	26921.2	25391.7	24486.0	23657.1	22924.9	22104.7
25°	27230.3	26917.6	26526.7	25938.2	25298.3	24477.6	22592.4	21465.8	20470.7	19607.6	18661.2
27.5°	25438.7	24967.4	24394.6	23580.1	22713.2	21661.7	19571.7	18328.4	17260.1	16334.7	15327.5
30°	23317.4	22704.7	21964.8	20954.0	19908.3	18715.7	16596.0	15336.7	14255.4	13303.4	12295.4
32.5°	20920.2	20202.5	19335.6	18201.1	17070.3	15844.0	13796.9	12577.9	11545.0	10629.2	9716.9
35°	18276.3	17506.6	16589.4	15432.3	14308.2	13116.1	11237.7	10138.5	9226.4	8417.0	7680.2
37.5°	15440.2	14684.4	13812.7	12722.1	11679.8	10599.4	8978.6	8057.6	7292.2	6620.4	6051.5
40°	12491.4	11830.0	11075.8	10132.9	9243.3	8343.7	7013.2	6282.2	5678.1	5165.7	4739.4
42.5°	9578.7	9066.2	8487.8	7742.7	7062.0	6376.9	5353.0	4811.2	4363.8	3995.0	3693.6
45°	6949.7	6606.9	6218.9	5700.9	5229.9	4752.0	4023.2	3642.6	3351.2	3113.4	2912.2
47.5°	4858.2	4659.3	4647.1	4168.6	3823.1	3530.9	3061.4	2821.0	2642.4	2498.3	2371.0
50°	3411.8	3315.5	3196.0	3025.2	2864.9	2699.7	2413.7	2268.4	2163.7	2076.5	1996.0
52.5°	2550.6	2500.6	2436.9	2346.3	2259.4	2166.5	1985.5	1893.0	1860.1	1778.8	1715.1
55°	2037.1	2008.5	1972.3	1919.1	1866.3	1845.1	1689.9	1621.2	1577.7	1545.6	1511.4
57.5°	1692.1	1670.8	1649.4	1613.2	1582.7	1545.6	1463.2	1428.0	1402.2	1383.3	1359.6
60°	1443.4	1430.6	1418.6	1397.5	1380.9	1360.9	1308.7	1288.7	1275.2	1263.9	1248.8
62.5°	1273.9	1267.4	1261.2	1249.9	1241.5	1230.7	1194.9	1185.4	1178.6	1172.9	1163.7
65°	1151.7	1146.9	1143.5	1136.0	1131.9	1125.5	1094.8	1088.3	1084.2	1082.1	1076.7
67.5°	1040.6	1035.6	1033.4	1028.0	1026.3	1022.3	997.1	993.6	992.2	992.9	990.9
70°	936.6	934.5	935.7	934.8	937.1	937.9	922.6	922.5	924.2	927.4	927.7
72.5°	874.3	874.3	875.5	876.0	878.3	879.4	866.7	866.1	866.8	869.2	869.3
75°	815.1	816.0	819.3	820.3	823.0	823.6	806.8	804.8	804.9	807.3	806.4
77.5°	733.0	736.6	742.7	745.9	751.1	752.0	733.2	731.0	731.1	733.4	731.4
80°	639.9	646.7	656.4	663.2	671.2	674.4	655.0	650.5	646.2	645.5	641.6
82.5°	541.0	549.3	561.0	567.2	575.7	577.5	545.2	539.1	535.5	535.8	532.2
85°	413.1	419.3	430.0	433.3	438.6	438.2	401.3	385.4	389.6	383.1	388.2
87.5°	259.1	262.7	269.4	270.3	272.7	272.2	235.1	227.7	225.6	225.7	223.0
90°	151.5	155.6	162.9	164.5	169.9	171.1	142.4	140.6	136.7	136.7	131.6
92.5°	67.1	71.6	76.5	81.1	86.1	90.8	92.1	95.9	91.3	86.1	81.7
95°	78.7	86.4	94.1	101.8	109.6	117.2	124.9	132.7	125.5	118.2	111.1
97.5°	88.5	97.6	106.7	115.7	124.8	134.0	143.1	152.2	144.5	136.5	128.8
100°	116.0	133.0	150.0	167.0	183.9	201.0	217.9	235.0	220.1	204.9	190.0
102.5°	240.4	276.4	312.5	348.5	384.6	420.6	456.9	493.0	458.7	424.3	390.0
105°	465.0	523.4	581.9	640.1	698.6	757.1	815.8	874.3	819.6	764.7	709.9
107.5°	736.4	795.8	854.9	914.1	973.5	1032.8	1092.5	1151.9	1098.4	1044.7	991.3
110°	905.2	948.4	991.7	1034.8	1078.0	1121.2	1165.2	1208.5	1176.3	1144.2	1112.0



TEST NUMBER: P1444822
 CATALOG NUMBER: EHBR1-36-UNV-TA-L940-UPL30

CANDELA DISTRIBUTION (continued):

	27.5°	30°	32.5°	35°	37.5°	40°	42.5°	45°	47.5°	50°	52.5°
112.5°	942.5	973.6	1004.4	1035.3	1066.1	1097.0	1128.9	1160.0	1143.8	1127.4	1111.5
115°	892.0	912.8	933.6	954.4	975.2	995.8	1017.8	1039.0	1033.7	1028.4	1023.2
117.5°	804.0	815.6	827.2	838.8	850.2	861.8	875.0	886.7	887.5	888.3	889.3
120°	710.2	715.1	719.9	724.8	729.5	734.2	740.9	746.1	750.3	754.4	758.7
122.5°	630.5	632.3	634.1	635.8	637.6	639.3	643.2	645.4	648.1	651.1	654.0
125°	566.5	567.4	568.2	569.0	569.6	570.4	573.7	574.9	575.0	575.0	575.1
127.5°	523.8	523.9	523.9	524.0	523.9	524.0	526.6	527.1	525.2	523.2	521.3
130°	492.8	493.2	493.5	494.0	494.2	494.6	497.7	498.6	495.4	491.8	488.5
132.5°	472.9	473.5	473.8	474.5	474.9	475.3	478.8	479.9	476.2	472.2	468.3
135°	456.2	456.9	457.5	458.2	458.7	459.6	463.4	464.8	461.3	457.3	453.7
137.5°	442.3	442.9	443.6	444.4	445.0	445.7	450.0	451.5	448.6	445.4	442.5
140°	430.4	431.2	432.0	433.0	433.9	434.9	439.5	441.2	439.0	436.6	434.1
142.5°	418.2	419.6	420.9	422.3	423.6	425.1	430.4	432.7	431.0	429.0	427.3
145°	410.6	412.2	413.7	415.2	416.8	418.5	424.5	427.1	425.9	424.7	423.5
147.5°	403.5	405.0	406.4	407.8	409.3	411.1	417.3	419.8	419.2	418.4	417.7
150°	396.6	398.1	399.4	401.0	402.7	404.3	411.2	414.1	413.5	412.9	412.2
152.5°	388.5	389.8	391.1	392.4	393.8	395.5	403.6	406.6	406.1	405.4	404.8
155°	383.7	384.6	385.5	386.7	387.8	389.1	397.8	400.6	400.3	400.0	399.6
157.5°	382.2	382.8	383.4	384.1	385.0	385.8	394.7	397.6	397.3	396.9	396.6
160°	381.3	381.9	382.3	382.8	383.3	384.0	393.2	395.9	395.6	395.2	394.8
162.5°	381.2	382.1	382.6	383.5	384.1	385.0	394.3	397.3	396.7	396.1	395.7
165°	383.7	384.0	384.4	384.9	385.3	385.8	394.5	396.9	396.7	396.3	395.9
167.5°	386.6	387.1	387.6	388.0	388.5	389.1	397.3	399.7	399.4	399.0	398.7
170°	390.5	390.9	391.2	391.7	392.1	392.8	399.5	401.4	401.2	400.6	400.1
172.5°	394.0	394.6	395.0	395.6	396.0	396.7	402.4	404.2	404.0	403.6	403.0
175°	395.0	395.4	395.9	396.3	396.7	397.2	401.6	403.0	402.9	402.8	402.5
177.5°	398.7	398.8	399.2	399.6	400.0	400.2	403.0	403.9	403.8	403.8	403.7
180°	401.2	401.2	401.2	401.2	401.2	401.2	401.2	401.2	401.2	401.2	401.2



TEST NUMBER: P1444822
 CATALOG NUMBER: EHBR1-36-UNV-TA-L940-UPL30

CANDELA DISTRIBUTION (continued):

	55°	57.5°	60°	62.5°	65°	67.5°	70°	72.5°	75°	77.5°	80°
0°	28971.7	28971.7	28971.7	28971.7	28971.7	28971.7	28971.7	28971.7	28971.7	28971.7	28971.7
2.5°	29033.8	29044.0	29045.5	29057.4	29056.4	29070.6	29068.4	29079.9	29073.2	29082.7	29074.7
5°	29715.7	29777.5	29809.9	29870.2	29889.3	29943.4	29958.6	30007.8	30009.9	30049.0	30040.1
7.5°	30679.8	30770.9	30825.1	30899.7	30937.5	30999.7	31027.1	31073.0	31087.8	31124.3	31127.1
10°	31255.5	31299.8	31330.7	31351.6	31370.6	31379.4	31389.8	31387.0	31389.8	31385.7	31394.7
12.5°	31029.1	30964.5	30921.7	30840.7	30793.9	30704.4	30660.5	30574.5	30543.3	30469.4	30458.8
15°	29882.3	29657.0	29497.9	29266.3	29120.9	28893.1	28759.9	28554.5	28460.7	28297.3	28254.5
17.5°	27791.9	27373.8	27050.2	26635.1	26347.0	25959.1	25715.1	25394.0	25218.1	24959.2	24869.4
20°	24861.4	24242.7	23757.3	23179.1	22765.3	22249.7	21919.7	21503.3	21261.6	20943.6	20814.6
22.5°	21420.9	20650.6	20044.4	19361.3	18862.0	18287.5	17892.0	17441.5	17178.6	16833.1	16680.1
25°	17874.7	17025.3	16351.3	15631.6	15104.0	14528.1	14132.6	13690.1	13418.0	13090.0	12937.9
27.5°	14483.1	13623.3	12972.0	12302.8	11818.9	11299.2	10942.3	10556.0	10314.5	10034.5	9891.5
30°	11490.1	10731.7	10177.5	9622.1	9219.7	8797.5	8501.0	8180.8	7968.9	7729.2	7592.9
32.5°	9051.7	8466.2	8032.2	7591.5	7262.1	6909.4	6653.1	6370.6	6179.4	5965.3	5841.9
35°	7168.8	6713.9	6367.7	6005.0	5722.0	5421.5	5195.8	4951.9	4780.4	4596.0	4489.4
37.5°	5664.1	5302.4	5017.5	4716.2	4483.7	4234.9	4151.0	3871.2	3693.4	3546.3	3444.4
40°	4445.3	4157.6	3921.9	3691.5	3501.9	3313.1	3161.5	3012.1	2897.3	2792.1	2719.3
42.5°	3471.3	3262.9	3090.8	2922.0	2783.8	2646.2	2536.5	2433.5	2356.1	2287.4	2240.4
45°	2759.5	2616.2	2496.6	2377.7	2280.2	2188.3	2114.5	2048.8	1998.8	1957.5	1928.2
47.5°	2267.1	2169.0	2084.6	2004.3	1938.1	1877.9	1828.4	1812.3	1758.7	1722.4	1708.7
50°	1926.6	1867.4	1803.3	1744.1	1699.9	1655.9	1623.8	1592.4	1572.2	1555.6	1550.5
52.5°	1672.7	1627.3	1591.7	1554.2	1525.0	1493.6	1471.5	1450.6	1439.6	1430.8	1429.8
55°	1483.7	1452.1	1428.5	1403.3	1385.8	1367.5	1356.0	1344.9	1340.1	1335.7	1336.1
57.5°	1340.8	1319.7	1304.4	1288.0	1278.6	1269.7	1266.9	1264.1	1265.6	1266.2	1268.7
60°	1236.8	1223.0	1213.3	1204.0	1200.0	1197.2	1199.3	1201.8	1206.9	1211.0	1214.6
62.5°	1156.9	1149.1	1144.3	1139.3	1138.9	1139.1	1143.4	1147.6	1153.9	1158.7	1162.2
65°	1074.8	1070.3	1068.8	1065.5	1067.2	1068.1	1073.3	1076.5	1082.9	1086.6	1091.1
67.5°	991.8	990.7	991.7	991.7	994.6	997.0	1002.0	1005.6	1011.0	1014.5	1018.1
70°	930.5	930.9	933.1	933.6	936.7	938.4	942.7	945.1	949.9	952.8	957.3
72.5°	870.9	870.0	870.4	869.0	870.2	869.7	872.1	873.2	877.3	879.6	885.0
75°	807.5	804.8	804.1	801.2	801.3	799.3	800.3	800.1	802.8	803.9	807.7
77.5°	730.8	726.3	724.1	719.3	719.1	717.4	719.3	720.4	725.2	727.4	731.8
80°	639.1	632.0	628.8	623.2	624.1	623.8	628.6	632.1	637.9	639.0	644.5
82.5°	531.1	524.0	520.5	515.1	516.3	516.5	520.8	521.5	526.6	528.7	535.1
85°	380.3	383.1	375.5	376.0	374.4	377.4	380.3	383.9	388.1	395.1	400.5
87.5°	224.0	223.0	225.7	226.0	229.9	231.9	238.1	241.7	248.7	254.2	264.0
90°	130.3	125.5	126.1	123.5	125.9	123.4	125.7	122.9	126.0	125.2	129.6
92.5°	76.3	71.7	66.4	61.9	56.6	52.2	49.5	47.5	44.9	43.0	40.3
95°	103.9	96.6	89.4	82.3	75.1	67.9	65.3	62.7	60.0	57.4	54.8
97.5°	121.0	113.4	105.6	97.8	90.1	82.4	80.6	78.8	77.1	75.4	73.6
100°	175.0	160.1	145.2	130.2	115.2	100.3	98.9	97.5	96.1	94.7	93.3
102.5°	355.8	321.5	287.3	253.0	218.8	184.6	178.6	172.6	166.7	160.7	154.7
105°	654.9	600.1	545.3	490.5	435.7	380.9	364.6	348.1	331.8	315.5	299.1
107.5°	937.8	884.1	830.7	777.4	723.9	670.5	644.6	618.8	592.8	567.0	541.2
110°	1079.6	1047.5	1015.5	983.2	951.2	919.2	894.4	869.9	845.0	820.4	795.8



TEST NUMBER: P1444822
 CATALOG NUMBER: EHBR1-36-UNV-TA-L940-UPL30

CANDELA DISTRIBUTION (continued):

	55°	57.5°	60°	62.5°	65°	67.5°	70°	72.5°	75°	77.5°	80°
112.5°	1095.1	1079.1	1062.8	1046.9	1030.9	1014.7	1002.7	990.7	978.7	966.7	954.5
115°	1018.0	1012.8	1007.6	1002.6	997.6	992.4	991.5	990.6	989.6	988.8	988.0
117.5°	890.0	890.8	891.6	892.5	893.5	894.5	900.9	907.1	913.6	920.1	926.7
120°	762.9	767.1	771.3	775.8	780.0	784.4	792.7	801.4	809.9	818.7	827.5
122.5°	656.9	659.8	662.6	665.6	668.5	671.5	679.9	688.4	696.8	705.4	714.2
125°	575.0	574.9	575.0	574.9	575.0	575.2	582.0	588.9	595.9	603.1	610.1
127.5°	519.2	517.1	515.1	513.2	511.0	509.2	513.2	517.2	521.3	525.4	529.5
130°	485.0	481.6	477.9	474.7	470.9	467.7	469.1	470.6	472.1	473.7	475.4
132.5°	464.2	460.3	456.2	452.2	448.1	444.2	443.9	443.7	443.6	443.6	443.6
135°	449.9	446.1	442.2	438.3	434.4	430.8	429.6	428.5	427.4	426.4	425.6
137.5°	439.5	436.5	433.3	430.3	427.1	424.1	422.3	421.1	419.5	418.4	417.1
140°	431.5	429.3	426.7	424.2	421.7	419.3	417.8	416.7	415.5	414.5	413.4
142.5°	425.3	423.4	421.6	419.8	417.8	416.1	414.7	413.6	412.4	411.4	410.3
145°	422.2	421.1	419.8	418.5	417.3	416.1	414.9	414.0	413.1	412.3	411.7
147.5°	416.8	416.1	415.2	414.4	413.5	412.6	411.9	411.5	410.6	410.2	409.6
150°	411.3	410.7	409.8	409.3	408.3	407.6	407.1	406.8	406.3	406.2	405.6
152.5°	404.1	403.5	402.8	402.2	401.4	400.6	400.2	400.0	399.7	399.4	398.8
155°	399.0	398.6	398.1	397.6	397.0	396.7	396.1	395.6	395.2	394.7	394.2
157.5°	396.1	395.8	395.2	394.8	394.2	393.8	393.3	393.0	392.4	392.0	391.6
160°	394.5	394.1	393.6	393.2	392.7	392.3	391.6	391.1	390.4	389.8	389.2
162.5°	395.0	394.6	394.0	393.4	392.7	392.1	391.7	391.2	390.7	390.4	389.8
165°	395.5	395.1	394.6	394.3	393.9	393.5	392.8	392.2	391.6	391.0	390.4
167.5°	398.4	398.0	397.6	397.3	396.7	396.3	395.8	395.2	394.6	394.0	393.3
170°	399.8	399.2	398.8	398.2	397.7	397.1	396.6	395.9	395.4	394.9	394.4
172.5°	402.7	402.5	402.0	401.5	401.0	400.5	400.1	399.7	399.1	398.7	398.3
175°	402.4	402.3	402.2	401.8	401.7	401.5	401.4	401.3	401.0	400.9	400.6
177.5°	403.7	403.6	403.6	403.4	403.2	403.2	402.9	402.8	402.5	402.2	402.1
180°	401.2	401.2	401.2	401.2	401.2	401.2	401.2	401.2	401.2	401.2	401.2



TEST NUMBER: P1444822
 CATALOG NUMBER: EHBR1-36-UNV-TA-L940-UPL30

CANDELA DISTRIBUTION (continued):

	82.5°	85°	87.5°	90°	92.5°	95°	97.5°	100°	102.5°	105°	107.5°
0°	28971.7	28971.7	28971.7	28971.7	28971.7	28971.7	28971.7	28971.7	28971.7	28971.7	28971.7
2.5°	29083.1	29075.6	29079.2	29065.6	29068.8	29052.3	29050.9	29032.3	29030.4	29012.9	29006.4
5°	30067.7	30051.5	30069.8	30041.4	30047.0	30009.9	30006.8	29958.9	29942.3	29882.4	29856.6
7.5°	31150.0	31143.9	31155.1	31131.2	31130.5	31097.4	31083.7	31040.8	31014.2	30951.2	30911.1
10°	31387.0	31392.6	31383.5	31385.7	31372.9	31369.3	31356.1	31347.7	31326.2	31309.9	31285.8
12.5°	30402.6	30408.4	30370.9	30394.8	30375.9	30419.9	30416.3	30468.1	30476.0	30541.5	30566.4
15°	28127.2	28120.1	28048.1	28093.5	28069.2	28165.6	28187.1	28316.9	28386.2	28552.8	28655.1
17.5°	24690.0	24671.5	24570.0	24625.3	24597.2	24739.3	24787.0	24994.5	25123.9	25392.2	25583.4
20°	20592.7	20557.1	20438.4	20503.2	20474.2	20635.7	20703.8	20954.5	21121.3	21476.8	21729.6
22.5°	16444.5	16388.3	16272.0	16332.5	16305.1	16472.4	16561.0	16812.6	17003.6	17368.6	17663.7
25°	12719.4	12669.4	12557.0	12599.3	12589.0	12730.6	12809.4	13047.3	13235.1	13582.7	13864.5
27.5°	9701.4	9649.3	9547.8	9577.7	9567.4	9688.0	9762.2	9961.1	10122.6	10415.2	10662.6
30°	7425.0	7362.2	7276.1	7292.6	7285.6	7383.2	7452.6	7620.0	7758.5	8005.8	8218.9
32.5°	5691.2	5628.2	5549.0	5556.7	5546.3	5622.9	5680.1	5825.7	5946.4	6156.6	6342.2
35°	4354.6	4428.4	4259.4	4366.4	4254.9	4418.6	4359.7	4450.7	4554.5	4731.6	4886.4
37.5°	3347.7	3296.3	3252.7	3248.1	3247.9	3285.8	3330.5	3418.2	3509.7	3641.6	3778.0
40°	2652.9	2616.8	2588.7	2586.6	2588.7	2615.6	2648.7	2709.2	2776.2	2871.1	2971.2
42.5°	2200.3	2176.3	2159.4	2158.2	2163.6	2182.7	2205.7	2241.6	2285.2	2346.6	2415.4
45°	1904.4	1891.1	1881.6	1881.1	1883.5	1893.5	1906.7	1929.2	1956.7	1995.1	2038.5
47.5°	1696.7	1693.5	1687.6	1687.8	1685.1	1689.2	1690.7	1703.2	1718.0	1746.8	1803.7
50°	1545.5	1545.5	1541.4	1541.2	1537.4	1537.1	1534.0	1538.9	1545.7	1563.7	1581.8
52.5°	1426.0	1425.6	1421.2	1420.3	1416.2	1416.0	1413.2	1415.2	1416.1	1425.1	1436.0
55°	1332.6	1329.8	1324.0	1322.2	1320.6	1322.9	1321.8	1322.0	1320.8	1324.5	1327.8
57.5°	1265.6	1261.9	1256.5	1254.8	1254.5	1257.3	1257.3	1256.3	1251.3	1247.8	1243.1
60°	1212.5	1208.9	1203.0	1201.5	1202.4	1206.2	1206.0	1202.8	1195.3	1188.7	1181.1
62.5°	1160.5	1159.0	1156.0	1155.5	1154.8	1155.4	1152.7	1149.3	1141.9	1134.9	1126.6
65°	1090.6	1091.3	1089.1	1089.4	1086.7	1086.3	1082.2	1078.8	1071.4	1065.1	1056.6
67.5°	1018.0	1018.6	1016.7	1016.7	1015.3	1015.5	1013.1	1009.9	1003.6	998.4	991.9
70°	958.2	959.7	958.7	958.9	957.3	956.6	952.7	949.7	943.2	938.8	932.9
72.5°	886.6	889.8	889.7	890.5	887.9	886.6	882.0	878.2	872.3	868.9	864.1
75°	809.2	813.4	814.6	816.5	812.8	810.9	805.9	802.8	798.0	795.9	792.8
77.5°	733.8	738.4	742.8	746.9	740.9	735.7	729.4	724.5	717.6	715.0	710.2
80°	649.1	657.2	667.0	675.2	664.5	653.8	643.4	635.7	626.5	622.8	616.7
82.5°	538.5	546.9	552.5	557.7	550.3	542.4	532.3	525.5	515.7	512.0	505.0
85°	409.1	419.5	422.9	425.7	420.9	416.7	407.2	394.5	388.2	378.5	373.4
87.5°	269.1	275.3	276.5	277.4	274.6	272.5	266.4	260.4	249.8	242.0	232.5
90°	127.8	130.4	126.5	126.6	124.3	126.1	121.3	120.7	113.5	111.6	105.3
92.5°	38.3	35.7	33.4	31.1	33.9	35.8	38.5	40.3	42.9	44.9	47.5
95°	52.2	49.5	46.9	44.3	46.4	48.4	50.6	52.6	54.8	56.8	59.0
97.5°	71.8	70.2	68.4	66.6	67.8	69.0	70.2	71.5	72.8	74.0	75.3
100°	91.9	90.5	89.1	87.7	87.7	87.7	87.7	87.7	87.7	87.7	87.7
102.5°	148.8	142.8	136.9	130.9	134.9	138.9	143.0	147.0	151.0	155.0	159.2
105°	282.8	266.5	250.1	233.8	249.6	265.4	281.2	297.0	312.8	328.9	344.6
107.5°	515.3	489.6	463.8	438.0	466.8	495.6	524.3	553.1	581.9	610.7	639.7
110°	771.3	746.7	722.2	697.6	728.2	758.6	789.2	819.7	850.3	880.8	911.6



TEST NUMBER: P1444822
 CATALOG NUMBER: EHBR1-36-UNV-TA-L940-UPL30

CANDELA DISTRIBUTION (continued):

	82.5°	85°	87.5°	90°	92.5°	95°	97.5°	100°	102.5°	105°	107.5°
112.5°	942.5	930.6	918.7	906.8	926.4	946.1	965.7	985.6	1005.2	1025.0	1044.6
115°	987.3	986.5	985.9	985.1	994.4	1003.8	1013.0	1022.4	1031.8	1041.1	1050.5
117.5°	933.0	939.7	946.3	953.0	956.0	958.9	962.0	965.0	968.3	971.3	974.5
120°	836.3	844.9	853.9	862.8	861.6	860.4	859.3	858.0	857.1	856.0	855.2
122.5°	723.0	731.7	740.7	749.5	746.9	744.2	741.7	739.2	736.7	734.4	732.1
125°	617.6	624.8	632.2	639.7	637.1	634.4	631.8	629.5	627.1	624.7	622.6
127.5°	534.1	538.6	543.1	547.7	546.5	545.3	544.3	543.1	542.3	541.6	540.7
130°	477.3	479.1	481.4	483.3	483.7	484.1	484.6	485.3	486.0	486.8	487.7
132.5°	443.9	444.2	444.6	445.0	446.4	447.8	449.5	451.2	453.1	454.8	457.1
135°	425.0	424.4	423.9	423.4	425.6	427.5	430.0	432.2	434.9	437.4	440.2
137.5°	416.1	415.0	414.3	413.4	415.5	417.6	419.9	422.2	424.7	427.4	430.3
140°	412.4	411.6	411.0	410.3	412.4	414.3	416.7	419.0	421.6	424.1	426.9
142.5°	409.6	408.6	408.0	407.4	409.2	411.1	413.3	415.3	417.7	420.0	422.5
145°	410.9	410.2	409.8	409.3	410.6	412.0	413.5	415.1	416.9	418.6	420.5
147.5°	409.1	408.7	408.4	408.2	409.2	410.1	411.3	412.3	413.7	415.0	416.4
150°	405.6	405.3	405.1	405.1	405.7	406.3	407.1	407.7	408.6	409.4	410.6
152.5°	398.8	398.5	398.6	398.5	398.9	399.5	400.2	400.8	401.6	402.3	403.4
155°	394.0	393.6	393.3	393.1	393.2	393.3	393.6	393.8	394.3	394.6	394.9
157.5°	391.3	390.9	390.6	390.3	390.3	390.1	390.2	390.2	390.3	390.1	390.3
160°	388.8	388.0	387.6	387.1	387.2	387.2	387.3	387.3	387.6	387.7	387.8
162.5°	389.4	389.1	388.7	388.3	388.0	387.7	387.5	387.0	386.8	386.5	386.4
165°	389.8	389.1	388.7	387.9	387.9	387.8	387.7	387.5	387.4	387.2	387.3
167.5°	392.9	392.2	391.7	391.1	390.6	390.1	389.8	389.2	389.0	388.5	388.3
170°	393.9	393.3	392.9	392.4	392.2	391.9	391.8	391.5	391.3	391.2	391.2
172.5°	397.9	397.4	397.0	396.6	396.4	396.1	396.0	395.9	395.8	395.8	395.7
175°	400.4	400.2	400.1	400.0	399.7	399.5	399.1	398.9	398.8	398.6	398.4
177.5°	401.7	401.4	401.2	401.0	400.9	400.9	400.9	400.9	400.9	400.8	400.7
180°	401.2	401.2	401.2	401.2	401.2	401.2	401.2	401.2	401.2	401.2	401.2



TEST NUMBER: P1444822
 CATALOG NUMBER: EHBR1-36-UNV-TA-L940-UPL30

CANDELA DISTRIBUTION (continued):

	110°	112.5°	115°	117.5°	120°	122.5°	125°	127.5°	130°	132.5°	135°
0°	28971.7	28971.7	28971.7	28971.7	28971.7	28971.7	28971.7	28971.7	28971.7	28971.7	28971.7
2.5°	28987.6	28980.0	28959.9	28950.0	28931.5	28922.1	28907.7	28898.2	28886.6	28877.8	28873.4
5°	29790.8	29753.7	29679.4	29633.7	29553.5	29500.7	29421.0	29362.6	29280.3	29219.7	29141.9
7.5°	30835.7	30778.8	30683.7	30611.5	30499.3	30413.6	30287.6	30186.9	30047.7	29932.2	29790.0
10°	31261.1	31227.9	31185.3	31138.9	31076.6	31015.7	30929.7	30842.0	30725.2	30609.0	30457.3
12.5°	30632.3	30663.6	30725.2	30754.0	30801.1	30817.2	30838.7	30828.6	30809.5	30762.1	30693.2
15°	28851.6	28982.0	29188.2	29330.8	29530.6	29671.0	29856.6	29976.1	30113.8	30196.0	30274.2
17.5°	25922.3	26174.6	26538.4	26828.6	27218.2	27535.0	27923.1	28228.1	28580.2	28850.3	29137.9
20°	22170.3	22523.6	23025.8	23452.2	24016.8	24495.6	25108.9	25622.7	26222.0	26721.6	27260.9
22.5°	18132.1	18547.7	19123.1	19637.5	20311.7	20913.9	21682.4	22361.6	23171.9	23897.7	24700.7
25°	14322.5	14729.9	15316.0	15848.7	16576.5	17239.8	18079.3	18858.6	19799.0	20675.7	21682.4
27.5°	11055.6	11417.4	11932.7	12412.1	13078.7	13729.9	14581.9	15413.0	16416.2	17358.5	18443.3
30°	8538.1	8831.6	9244.4	9630.1	10165.3	10697.8	11456.7	12225.3	13223.7	14200.0	15312.2
32.5°	6616.7	6867.0	7211.7	7524.7	7937.1	8338.6	8897.5	9511.7	10387.4	11322.8	12398.1
35°	5122.1	5336.2	5629.6	5899.3	6238.3	6557.1	6974.1	7412.5	8080.8	8867.6	9830.0
37.5°	4083.6	4170.9	4380.2	4601.2	4882.8	5144.8	5471.1	5795.2	6273.3	6894.1	7680.2
40°	3105.5	3244.2	3414.6	3588.6	3801.9	4011.9	4369.9	4542.1	4856.9	5302.6	5912.8
42.5°	2505.8	2603.2	2723.2	2844.2	2992.8	3139.2	3320.2	3504.5	3739.9	4041.7	4475.7
45°	2096.9	2160.4	2237.7	2318.4	2415.9	2515.8	2637.0	2763.6	2923.1	3108.6	3372.3
47.5°	1823.7	1858.8	1909.3	1964.4	2031.3	2100.4	2179.2	2259.9	2358.9	2469.0	2619.1
50°	1610.4	1639.8	1679.0	1715.8	1762.0	1832.8	1864.1	1908.7	1968.3	2032.9	2117.0
52.5°	1456.2	1475.7	1500.3	1521.5	1550.6	1577.2	1612.0	1642.7	1683.9	1722.8	1777.0
55°	1336.1	1343.2	1357.0	1370.7	1390.9	1409.0	1432.9	1453.0	1479.3	1502.6	1536.7
57.5°	1243.3	1243.9	1250.4	1257.4	1270.4	1281.9	1298.2	1311.5	1329.7	1344.6	1365.0
60°	1176.6	1173.0	1174.3	1176.8	1184.1	1191.5	1202.0	1210.6	1222.1	1230.5	1242.0
62.5°	1121.0	1115.5	1114.2	1113.6	1117.2	1119.9	1125.6	1129.8	1136.3	1140.0	1146.1
65°	1051.0	1044.4	1041.9	1038.8	1039.9	1039.1	1041.2	1041.3	1044.7	1045.4	1048.9
67.5°	987.4	982.0	978.6	974.5	972.7	969.7	968.5	965.7	965.3	962.9	962.4
70°	929.4	924.0	921.2	917.5	915.5	911.7	909.4	904.6	901.8	897.5	894.9
72.5°	862.3	859.3	858.4	855.9	855.3	853.1	852.1	848.8	846.9	843.0	840.9
75°	792.2	789.8	789.5	787.0	786.7	784.2	783.5	780.0	778.1	774.4	772.8
77.5°	708.7	705.0	704.0	701.0	701.7	700.4	701.4	698.7	697.6	693.8	692.7
80°	614.6	609.9	607.9	604.0	605.0	603.2	605.0	604.8	606.2	603.2	602.7
82.5°	503.2	498.0	497.0	494.2	496.1	496.3	500.3	498.1	499.0	496.2	497.3
85°	366.1	362.3	356.9	356.2	352.7	356.3	351.6	354.8	349.7	353.3	348.5
87.5°	226.9	219.0	214.8	209.2	207.0	201.5	199.3	195.3	196.5	194.6	195.7
90°	104.9	99.4	100.1	96.6	98.2	95.5	98.3	97.1	100.2	98.8	102.4
92.5°	49.5	51.7	55.8	60.4	64.4	68.6	72.7	77.2	81.2	85.7	89.6
95°	61.0	63.2	68.8	74.3	80.0	85.6	91.3	96.9	102.6	108.2	113.8
97.5°	76.5	77.7	83.3	89.0	94.6	100.2	105.8	111.7	117.3	123.0	128.6
100°	87.7	87.8	103.7	119.7	135.6	151.7	167.7	183.6	199.8	215.9	231.8
102.5°	163.2	167.2	207.6	248.0	288.3	328.7	369.1	409.6	449.9	490.5	530.9
105°	360.5	376.3	437.9	499.5	561.0	622.7	684.4	746.2	807.8	869.5	931.2
107.5°	668.5	697.3	753.0	808.8	864.3	920.1	976.0	1031.7	1087.3	1143.1	1199.1
110°	942.1	972.7	1010.0	1047.4	1084.8	1122.1	1159.5	1196.9	1234.4	1271.8	1309.4



TEST NUMBER: P1444822
 CATALOG NUMBER: EHBR1-36-UNV-TA-L940-UPL30

CANDELA DISTRIBUTION (continued):

	110°	112.5°	115°	117.5°	120°	122.5°	125°	127.5°	130°	132.5°	135°
112.5°	1064.3	1084.2	1105.9	1127.8	1149.6	1171.4	1193.3	1215.1	1237.1	1259.0	1281.0
115°	1060.0	1069.6	1077.9	1086.7	1095.1	1103.7	1112.3	1121.1	1129.8	1138.6	1147.3
117.5°	977.6	981.0	982.2	983.8	985.1	986.8	988.4	990.1	991.7	993.4	994.9
120°	854.2	853.3	852.0	850.8	849.4	848.3	847.2	846.1	845.1	844.1	843.0
122.5°	729.8	727.6	726.3	725.2	724.2	723.1	722.1	721.3	720.3	719.5	718.5
125°	620.3	618.3	619.7	621.1	622.6	624.2	625.7	627.4	629.0	630.6	632.3
127.5°	540.0	539.5	542.9	546.3	549.9	553.5	557.0	560.8	564.3	568.1	571.6
130°	488.7	489.9	494.1	498.6	503.0	507.7	512.1	516.9	521.3	525.8	530.3
132.5°	459.0	461.4	465.5	469.9	474.1	478.6	483.0	487.4	491.7	496.3	500.5
135°	443.0	446.1	449.9	453.9	457.9	462.0	466.0	470.1	474.0	478.1	482.0
137.5°	432.9	436.0	439.2	442.4	445.6	449.1	452.3	455.7	458.7	462.2	465.3
140°	429.6	432.6	434.3	436.6	438.4	440.5	442.3	444.4	446.2	448.4	450.2
142.5°	425.0	427.8	428.9	430.2	431.5	433.1	434.4	435.7	436.9	438.2	439.4
145°	422.4	424.6	424.7	425.1	425.5	425.9	426.0	426.4	426.5	426.8	427.0
147.5°	417.9	419.5	419.2	419.4	419.4	419.2	419.3	419.3	419.1	419.1	419.1
150°	411.4	412.6	412.1	412.0	411.4	411.2	410.7	410.5	409.9	409.7	409.2
152.5°	404.1	405.1	404.3	404.1	403.5	403.0	402.4	402.1	401.4	401.0	400.6
155°	395.2	395.7	395.3	395.0	394.7	394.5	394.1	394.1	393.9	393.6	393.4
157.5°	390.4	390.5	390.3	390.1	389.8	389.7	389.6	389.5	389.4	389.6	389.6
160°	387.9	388.2	387.8	387.7	387.5	387.3	387.2	387.3	387.2	387.5	387.5
162.5°	386.2	386.1	385.7	385.5	385.4	385.4	385.3	385.4	385.4	385.6	385.7
165°	387.4	387.6	387.0	386.8	386.5	386.3	386.0	385.9	385.9	385.9	385.8
167.5°	388.0	387.8	387.8	387.9	387.9	388.1	388.2	388.6	388.8	389.1	389.2
170°	391.1	391.2	390.9	390.8	390.6	390.5	390.6	390.5	390.5	390.5	390.5
172.5°	395.7	395.7	395.3	394.9	394.6	394.4	394.0	393.8	393.5	393.2	392.9
175°	398.1	397.9	397.7	397.5	397.3	397.1	397.0	396.6	396.4	396.2	396.0
177.5°	400.6	400.4	400.2	400.2	400.1	400.0	400.0	400.0	400.0	400.0	399.8
180°	401.2	401.2	401.2	401.2	401.2	401.2	401.2	401.2	401.2	401.2	401.2



TEST NUMBER: P1444822
 CATALOG NUMBER: EHBR1-36-UNV-TA-L940-UPL30

CANDELA DISTRIBUTION (continued):

	137.5°	140°	142.5°	145°	147.5°	150°	152.5°	155°	157.5°	160°	162.5°
0°	28971.7	28971.7	28971.7	28971.7	28971.7	28971.7	28971.7	28971.7	28971.7	28971.7	28971.7
2.5°	28867.6	28867.2	28864.4	28865.7	28866.3	28868.3	28870.8	28873.4	28873.9	28876.0	28876.4
5°	29083.6	29012.2	28959.4	28901.3	28857.6	28818.3	28792.1	28771.3	28763.3	28765.2	28770.1
7.5°	29669.5	29522.0	29400.4	29262.1	29146.7	29024.7	28923.4	28827.2	28757.1	28704.8	28675.6
10°	30312.3	30132.8	29961.0	29760.8	29571.0	29368.4	29184.8	29000.1	28846.0	28712.2	28614.0
12.5°	30597.6	30470.7	30322.2	30133.2	29930.1	29696.4	29460.3	29207.2	28971.8	28753.4	28577.1
15°	30295.5	30295.7	30241.6	30151.0	30009.9	29823.1	29598.1	29334.4	29056.6	28773.3	28514.4
17.5°	29336.7	29517.6	29618.2	29681.9	29662.4	29593.5	29450.4	29247.8	28988.9	28687.0	28371.2
20°	27690.1	28116.9	28421.1	28694.6	28847.9	28949.9	28939.6	28857.2	28672.8	28416.2	28087.2
22.5°	25383.5	26099.8	26664.8	27191.8	27561.4	27862.1	28005.0	28065.6	27982.1	27803.3	27494.4
25°	22582.0	23555.7	24386.8	25193.2	25798.1	26318.1	26630.4	26850.6	26868.1	26774.7	26499.1
27.5°	19469.0	20618.3	21670.1	22741.8	23592.6	24340.0	24830.4	25189.4	25303.4	25288.3	25038.1
30°	16359.9	17566.5	18725.8	19975.7	21028.4	21983.2	22631.0	23116.4	23303.4	23339.3	23098.6
32.5°	13423.7	14613.6	15769.7	17076.3	18234.7	19329.0	20094.4	20671.0	20888.5	20939.8	20675.7
35°	10758.9	11856.7	12955.4	14221.7	15373.5	16506.7	17313.1	17916.8	18119.9	18154.2	17848.5
37.5°	8448.1	9383.3	10340.7	11476.9	12534.6	13599.0	14365.1	14932.5	15080.5	15071.3	14725.4
40°	6502.3	7229.5	7998.7	8934.1	9813.5	10713.2	11360.2	11829.2	11907.0	11849.4	11486.0
42.5°	4889.4	5414.5	5972.2	6670.5	7323.0	7996.3	8467.1	8815.2	8826.3	8735.3	8409.0
45°	3642.6	4155.0	4388.9	4811.0	5231.3	5679.0	5966.4	6181.6	6148.2	6068.2	5820.2
47.5°	2776.9	2973.8	3182.6	3444.4	3689.2	4197.2	4159.6	4505.1	4256.2	4425.9	4052.5
50°	2205.1	2315.1	2427.7	2566.6	2694.5	2827.4	2910.4	2972.3	2964.2	2937.6	2866.1
52.5°	1876.1	1910.1	1965.5	2044.5	2115.9	2187.7	2234.9	2273.4	2274.1	2263.4	2227.2
55°	1568.0	1611.1	1651.0	1702.6	1790.5	1804.0	1871.9	1858.1	1863.5	1844.7	1863.9
57.5°	1382.4	1407.5	1430.0	1460.7	1486.2	1515.8	1533.3	1550.2	1548.5	1544.9	1526.4
60°	1251.0	1264.8	1277.3	1295.3	1309.1	1325.9	1334.0	1342.6	1339.8	1333.6	1317.2
62.5°	1149.7	1158.3	1165.4	1177.0	1185.5	1196.0	1200.1	1203.8	1200.1	1194.2	1179.7
65°	1049.7	1055.3	1059.7	1068.5	1074.5	1083.4	1087.0	1090.4	1087.0	1082.4	1071.4
67.5°	959.5	960.1	959.6	963.1	965.0	970.3	971.9	974.4	970.5	966.6	957.3
70°	891.1	889.7	888.0	889.3	889.7	892.2	892.7	892.2	887.7	880.8	870.5
72.5°	837.6	836.9	835.6	836.7	836.7	839.1	838.4	837.2	831.5	824.9	814.7
75°	768.9	768.3	765.8	765.9	763.8	764.5	761.7	760.1	753.8	748.2	739.2
77.5°	688.5	687.2	683.5	682.1	678.0	676.2	671.0	668.4	661.9	657.5	649.7
80°	598.7	597.3	592.5	589.8	583.4	579.3	571.6	567.2	559.7	555.4	547.8
82.5°	494.9	495.4	490.6	487.3	478.0	470.9	460.6	455.0	446.9	442.6	434.9
85°	352.0	346.9	349.6	349.4	343.6	337.4	329.1	323.2	316.3	312.2	306.8
87.5°	193.0	194.2	192.9	191.6	187.5	184.5	177.9	174.5	169.5	167.0	162.9
90°	95.0	92.6	85.6	83.3	76.5	72.5	64.7	61.4	54.1	52.5	48.1
92.5°	84.9	80.1	75.6	70.6	66.2	61.5	56.7	52.0	47.2	45.4	44.1
95°	107.0	100.2	93.4	86.5	79.7	72.8	66.1	59.2	52.4	51.0	49.6
97.5°	120.6	112.5	104.4	96.4	88.4	80.3	72.3	64.3	56.2	55.3	54.4
100°	213.3	194.8	176.2	157.6	139.1	120.6	102.0	83.5	64.9	63.9	62.8
102.5°	485.9	440.9	395.9	351.0	306.1	261.0	216.1	171.1	126.1	119.5	113.1
105°	863.1	794.9	727.1	659.0	590.8	522.7	454.7	386.4	318.3	296.5	274.6
107.5°	1135.1	1071.0	1007.2	943.2	879.1	815.2	751.2	687.1	623.0	584.5	546.0
110°	1258.6	1207.7	1157.2	1106.3	1055.6	1004.8	954.0	903.2	852.4	819.1	786.1



TEST NUMBER: P1444822
 CATALOG NUMBER: EHBR1-36-UNV-TA-L940-UPL30

CANDELA DISTRIBUTION (continued):

	137.5°	140°	142.5°	145°	147.5°	150°	152.5°	155°	157.5°	160°	162.5°
112.5°	1243.9	1206.7	1169.7	1132.3	1095.3	1058.0	1020.9	983.5	946.2	926.2	906.0
115°	1125.1	1102.7	1080.4	1058.1	1035.7	1013.4	990.9	968.4	945.9	935.4	924.8
117.5°	983.7	972.4	961.1	949.7	938.3	926.8	915.4	903.9	892.4	888.9	885.1
120°	839.9	836.5	833.0	829.6	826.3	822.9	819.4	815.8	812.3	812.9	813.3
122.5°	720.1	721.5	723.1	724.3	725.8	727.1	728.6	729.8	731.2	734.0	737.0
125°	635.8	639.1	642.7	646.1	649.5	652.8	656.3	659.5	663.0	665.8	668.9
127.5°	575.6	579.3	583.3	587.0	591.0	594.8	598.7	602.2	606.1	608.8	611.6
130°	533.8	537.1	540.5	543.7	547.2	550.5	553.8	557.1	560.5	562.6	564.8
132.5°	503.6	506.6	509.7	512.6	515.8	518.6	521.7	524.7	527.9	529.4	531.2
135°	484.5	486.6	489.0	491.2	493.7	495.8	498.2	500.6	503.0	504.2	505.4
137.5°	467.1	469.1	471.0	472.8	474.9	476.6	478.8	480.7	483.0	483.4	484.4
140°	452.1	454.1	456.0	458.0	460.1	462.1	464.4	466.5	468.8	469.4	470.3
142.5°	440.9	442.4	444.0	445.6	447.3	448.9	450.6	452.6	454.4	455.1	455.8
145°	428.8	430.6	432.6	434.2	436.1	438.1	440.4	442.4	444.6	445.0	445.6
147.5°	420.5	422.0	423.7	425.3	427.1	428.6	430.6	432.5	434.4	434.8	435.4
150°	410.9	412.4	414.2	415.8	417.7	419.5	421.6	423.5	425.9	426.5	427.2
152.5°	402.3	404.1	405.8	407.8	409.8	411.9	414.0	416.2	418.4	419.0	419.7
155°	395.3	396.9	398.8	400.8	402.8	404.6	406.8	408.8	410.9	411.8	412.5
157.5°	391.3	392.7	394.6	396.2	398.0	399.8	401.8	403.6	405.5	406.2	406.8
160°	388.9	390.4	391.9	393.4	395.1	396.7	398.4	400.0	401.7	402.3	402.9
162.5°	387.2	388.6	390.3	391.7	393.3	394.8	396.6	398.1	399.8	400.3	401.0
165°	386.9	388.0	389.2	390.4	391.5	392.6	393.9	395.0	396.3	396.9	397.7
167.5°	390.4	391.0	391.9	392.8	393.8	394.7	395.8	396.6	397.6	398.3	398.9
170°	391.4	392.0	392.9	393.7	394.6	395.4	396.2	397.0	398.1	398.6	399.2
172.5°	393.4	393.8	394.5	394.9	395.5	396.0	396.6	397.2	397.8	398.5	399.0
175°	396.4	396.6	396.9	397.1	397.3	397.5	398.0	398.4	398.7	399.1	399.6
177.5°	400.0	400.1	400.3	400.5	400.8	401.0	401.3	401.4	401.7	402.3	402.8
180°	401.2	401.2	401.2	401.2	401.2	401.2	401.2	401.2	401.2	401.2	401.2



TEST NUMBER: P1444822
 CATALOG NUMBER: EHBR1-36-UNV-TA-L940-UPL30

CANDELA DISTRIBUTION (continued):

	165°	167.5°	170°	172.5°	175°	177.5°	180°	182.5°	185°	187.5°	190°
0°	28971.7	28971.7	28971.7	28971.7	28971.7	28971.7	28971.7	28971.7	28971.7	28971.7	28971.7
2.5°	28875.4	28875.1	28874.1	28872.8	28871.5	28872.3	28873.6	28876.9	28882.7	28891.1	28902.1
5°	28774.1	28779.9	28783.3	28783.7	28780.7	28778.9	28781.7	28789.6	28805.6	28832.5	28868.7
7.5°	28667.8	28675.0	28686.2	28694.6	28696.2	28694.2	28694.6	28707.1	28736.6	28788.9	28862.2
10°	28554.3	28532.7	28544.0	28564.9	28581.4	28584.5	28586.5	28601.1	28644.4	28723.4	28841.1
12.5°	28449.5	28381.2	28368.0	28386.8	28411.9	28419.9	28417.7	28424.0	28474.6	28579.2	28743.3
15°	28311.6	28183.1	28139.1	28144.0	28175.0	28186.2	28178.0	28165.6	28214.9	28342.5	28555.0
17.5°	28088.5	27881.3	27800.5	27796.9	27833.3	27842.9	27822.9	27784.3	27832.8	27992.1	28256.0
20°	27749.3	27443.4	27291.3	27267.2	27306.6	27295.1	27255.3	27196.9	27260.6	27454.4	27768.1
22.5°	27139.5	26751.9	26492.2	26408.4	26455.6	26424.1	26366.0	26291.4	26376.1	26596.2	26945.6
25°	26143.1	25695.3	25339.6	25140.2	25177.7	25121.4	25058.1	24967.7	25068.7	25321.4	25706.0
27.5°	24678.5	24161.2	23720.5	23390.3	23402.5	23328.6	23255.7	23138.7	23264.9	23563.9	23997.7
30°	22731.0	22132.5	21595.8	21147.0	21106.8	21035.2	20960.5	20807.0	20964.9	21322.9	21829.8
32.5°	20285.3	19620.6	19000.6	18433.2	18326.1	18256.2	18189.7	18013.0	18219.7	18637.0	19219.4
35°	17425.1	16717.1	16044.9	15396.7	15219.4	15149.5	15091.4	14922.1	15180.0	15634.1	16263.2
37.5°	14285.7	13562.4	12895.0	12230.4	11979.8	11884.9	11842.7	11731.8	12029.3	12478.6	13110.1
40°	11062.6	10390.2	9791.8	9204.8	8919.1	8774.1	8751.9	8731.8	9019.4	9409.2	9982.4
42.5°	8047.6	7505.2	7043.7	6595.0	6336.1	6138.1	6138.0	6198.1	6457.0	6749.0	7191.0
45°	5566.9	5202.7	4908.7	4608.9	4689.1	4294.1	4526.2	4407.1	4535.1	4723.3	5010.8
47.5°	3826.6	3627.9	3466.4	3298.9	3176.8	3060.2	3070.4	3145.6	3266.2	3377.9	3527.4
50°	2789.0	2687.7	2605.5	2518.5	2457.8	2406.3	2409.3	2441.8	2505.2	2564.1	2642.3
52.5°	2185.4	2129.6	2084.8	2036.8	2004.9	1979.3	1980.7	1996.5	2030.7	2064.3	2109.2
55°	1801.2	1794.5	1736.4	1693.3	1676.9	1659.6	1662.8	1668.9	1692.3	1711.9	1741.7
57.5°	1509.5	1483.4	1465.9	1443.2	1432.8	1420.8	1423.5	1425.8	1441.3	1454.6	1475.9
60°	1303.4	1284.9	1272.5	1257.1	1250.3	1242.6	1244.3	1245.7	1255.8	1264.3	1279.7
62.5°	1166.5	1149.9	1139.2	1127.3	1122.4	1117.3	1118.5	1118.9	1125.1	1131.5	1143.1
65°	1061.5	1048.4	1039.4	1029.2	1024.2	1018.8	1019.3	1019.3	1024.5	1029.2	1037.9
67.5°	950.5	940.6	934.8	926.6	923.2	917.7	917.6	915.9	919.3	921.1	927.1
70°	861.3	851.3	844.0	836.2	831.8	827.0	827.1	827.2	831.2	835.3	843.0
72.5°	806.2	796.7	790.1	783.2	779.2	775.1	774.4	773.9	776.8	779.1	784.2
75°	733.4	725.8	721.8	715.4	712.2	707.6	706.8	704.7	706.1	706.5	710.3
77.5°	644.9	637.7	634.5	628.0	625.3	620.1	619.6	617.3	618.3	617.6	620.5
80°	544.1	537.5	535.8	530.4	529.2	524.3	523.6	520.6	521.5	519.2	520.3
82.5°	431.5	425.5	424.3	419.3	419.3	414.9	414.7	410.3	410.3	406.5	400.5
85°	304.0	299.5	297.8	293.7	292.4	288.9	287.1	282.9	281.5	278.7	277.9
87.5°	160.4	157.6	155.1	153.3	149.7	143.4	142.8	138.4	138.7	135.6	135.8
90°	46.8	42.7	41.6	37.7	36.3	33.5	32.4	32.9	33.9	34.6	35.6
92.5°	42.5	40.9	39.4	37.8	36.2	34.7	33.1	34.7	36.2	37.8	39.4
95°	48.2	46.8	45.4	44.0	42.6	41.2	39.8	41.2	42.6	44.1	45.5
97.5°	53.6	52.6	51.8	50.9	50.0	49.1	48.3	49.2	50.1	51.0	51.9
100°	61.8	60.7	59.6	58.6	57.6	56.5	55.4	56.7	57.9	58.9	59.9
102.5°	106.7	100.2	93.7	87.2	80.7	74.3	67.7	74.3	80.7	87.3	93.8
105°	252.7	230.9	208.9	187.0	165.1	143.1	121.2	143.2	165.2	187.1	209.1
107.5°	507.4	469.1	430.5	392.0	353.3	314.8	276.2	314.9	353.5	392.1	430.7
110°	752.8	719.6	686.4	653.2	619.8	586.7	553.3	586.8	620.0	653.4	686.7



TEST NUMBER: P1444822
 CATALOG NUMBER: EHBR1-36-UNV-TA-L940-UPL30

CANDELA DISTRIBUTION (continued):

	165°	167.5°	170°	172.5°	175°	177.5°	180°	182.5°	185°	187.5°	190°
112.5°	885.8	865.7	845.5	825.3	805.0	784.8	764.5	785.0	805.4	825.9	846.0
115°	914.3	903.6	893.0	882.4	871.6	860.9	850.0	861.3	872.2	883.0	893.9
117.5°	881.3	877.8	874.0	870.3	866.5	862.8	858.9	863.0	867.1	871.3	875.1
120°	813.7	814.4	814.7	815.1	815.5	815.8	816.0	816.3	816.3	816.3	816.1
122.5°	739.7	742.7	745.4	748.3	750.9	753.7	756.1	754.1	751.7	749.7	747.1
125°	671.8	674.9	677.8	680.7	683.4	686.3	688.7	686.8	684.6	682.2	679.8
127.5°	614.3	617.0	619.5	622.3	624.8	627.2	629.4	627.8	626.0	624.0	621.8
130°	566.9	569.1	571.0	573.1	574.9	576.7	578.2	577.3	576.1	575.0	573.4
132.5°	532.7	534.6	536.1	537.7	538.9	540.4	541.2	541.0	540.3	539.7	538.7
135°	506.7	507.8	508.9	510.1	510.9	511.8	512.2	512.5	512.3	512.1	511.6
137.5°	485.0	485.9	486.3	486.8	487.3	487.5	487.6	488.3	488.6	489.2	489.2
140°	470.9	471.7	472.3	472.8	473.4	473.8	473.7	474.6	474.9	475.2	475.2
142.5°	456.6	457.3	457.9	458.5	458.8	459.2	459.3	460.0	460.3	460.6	460.8
145°	446.2	446.5	447.0	447.5	447.6	447.7	447.5	448.5	449.0	449.5	450.0
147.5°	435.7	436.3	436.6	436.8	436.9	437.1	436.9	437.8	438.3	438.9	439.4
150°	428.0	428.7	429.3	429.9	430.3	430.7	430.7	431.4	431.6	431.9	432.0
152.5°	420.3	420.9	421.6	422.0	422.4	422.7	422.8	423.3	423.8	424.3	424.5
155°	413.2	413.9	414.6	415.2	415.7	416.3	416.6	417.1	417.4	417.7	417.8
157.5°	407.5	408.2	408.7	409.4	409.8	410.5	410.9	411.4	411.8	412.2	412.4
160°	403.5	404.2	404.7	405.4	405.9	406.4	406.8	407.4	407.8	408.2	408.5
162.5°	401.4	402.1	402.5	403.1	403.6	404.1	404.6	405.1	405.5	406.0	406.3
165°	398.4	399.1	399.7	400.4	401.1	401.8	402.3	402.7	402.8	403.0	403.2
167.5°	399.5	400.2	400.7	401.4	401.9	402.7	403.2	403.5	403.6	403.8	403.9
170°	399.7	400.3	400.8	401.4	401.9	402.6	402.9	403.1	403.2	403.4	403.5
172.5°	399.6	400.3	401.0	401.7	402.3	402.9	403.5	403.6	403.4	403.4	403.1
175°	400.0	400.7	401.2	401.8	402.2	402.8	403.3	403.0	403.0	402.8	402.7
177.5°	403.6	404.3	404.9	405.5	406.1	406.6	407.2	406.7	406.3	405.9	405.4
180°	401.2	401.2	401.2	401.2	401.2	401.2	401.2	401.2	401.2	401.2	401.2



TEST NUMBER: P1444822
 CATALOG NUMBER: EHBR1-36-UNV-TA-L940-UPL30

CANDELA DISTRIBUTION (continued):

	192.5°	195°	197.5°	200°	202.5°	205°	207.5°	210°	212.5°	215°	217.5°
0°	28971.7	28971.7	28971.7	28971.7	28971.7	28971.7	28971.7	28971.7	28971.7	28971.7	28971.7
2.5°	28917.5	28932.0	28954.1	28974.2	29004.4	29028.2	29064.0	29091.1	29131.5	29157.7	29201.6
5°	28920.0	28976.7	29051.0	29123.7	29211.0	29290.2	29388.7	29472.5	29571.5	29652.2	29753.5
7.5°	28960.9	29070.0	29200.8	29332.6	29481.6	29621.0	29778.1	29920.3	30075.7	30207.1	30350.8
10°	28991.1	29159.4	29352.1	29546.0	29750.1	29939.8	30131.3	30296.7	30451.3	30578.6	30691.0
12.5°	28950.2	29182.0	29429.4	29668.2	29895.1	30091.4	30256.1	30383.4	30471.1	30530.8	30544.7
15°	28811.2	29090.2	29359.0	29596.9	29785.2	29930.4	30005.6	30040.8	30003.1	29940.3	29802.5
17.5°	28551.5	28845.7	29086.1	29273.7	29373.2	29412.6	29350.3	29242.0	29030.3	28795.2	28455.8
20°	28075.2	28349.4	28523.7	28626.1	28599.5	28501.0	28265.8	27980.0	27557.3	27106.8	26512.3
22.5°	27240.0	27479.7	27572.5	27580.2	27417.8	27171.2	26747.1	26256.8	25590.0	24896.6	24044.0
25°	25986.2	26196.2	26210.8	26128.4	25831.1	25431.6	24808.8	24115.3	23209.1	22285.2	21216.7
27.5°	24285.9	24487.2	24437.9	24284.1	23871.4	23336.7	22539.4	21643.4	20526.3	19435.2	18253.2
30°	22148.5	22363.7	22305.8	22108.5	21617.6	20985.7	20047.5	19006.6	17766.3	16600.8	15403.1
32.5°	19590.5	19862.7	19822.7	19635.2	19122.9	18446.7	17428.7	16324.7	15055.7	13907.1	12742.1
35°	16683.1	17013.5	17030.7	16908.1	16432.5	15764.1	14758.8	13690.3	12474.7	11391.1	10314.8
37.5°	13550.7	13933.8	14012.5	13979.4	13585.3	12995.2	12079.3	11120.8	10043.9	9094.3	8173.7
40°	10401.0	10788.7	10923.3	10963.2	10672.4	10215.4	9463.7	8689.9	7812.1	7042.6	6311.6
42.5°	7528.5	7872.3	8002.4	8084.2	7902.6	7597.8	7049.5	6487.6	5844.5	5289.5	4757.4
45°	5228.7	5471.9	5570.8	5653.1	5554.3	5382.4	5036.1	4684.7	4260.1	3897.4	3554.0
47.5°	3655.7	3789.8	3855.1	3895.0	3856.7	3767.0	3578.6	3375.1	3135.4	2923.4	2719.7
50°	2709.7	2781.1	2815.2	2838.3	2810.4	2760.6	2658.5	2547.8	2416.1	2296.0	2178.7
52.5°	2147.3	2188.2	2208.6	2220.9	2205.0	2174.5	2115.1	2049.4	1970.5	1896.3	1857.3
55°	1809.0	1806.8	1853.8	1831.1	1853.8	1803.2	1792.6	1720.3	1654.8	1608.7	1558.7
57.5°	1491.8	1513.1	1522.1	1532.2	1525.7	1516.4	1491.2	1465.3	1430.7	1401.8	1371.0
60°	1291.4	1308.9	1318.7	1328.7	1328.1	1324.6	1310.1	1294.6	1273.0	1255.8	1237.0
62.5°	1153.3	1168.5	1178.2	1187.8	1188.6	1187.2	1176.2	1165.4	1150.7	1139.9	1127.0
65°	1044.7	1055.3	1061.9	1069.5	1069.1	1067.1	1057.0	1048.2	1036.0	1028.5	1019.0
67.5°	930.9	939.0	944.1	951.3	952.7	953.2	947.7	943.5	937.6	935.5	932.2
70°	850.0	859.8	868.1	877.2	882.2	884.5	882.2	880.0	876.6	875.1	872.6
72.5°	788.8	797.1	803.5	811.8	816.5	819.8	818.0	816.8	813.8	813.3	811.6
75°	712.8	718.6	722.2	728.5	730.9	734.0	732.6	733.4	732.4	734.8	734.6
77.5°	621.5	625.7	627.4	631.8	632.3	636.0	637.0	641.3	644.4	651.3	654.9
80°	518.6	521.3	521.3	525.9	528.0	534.3	537.3	544.5	547.8	554.0	554.5
82.5°	402.8	399.8	402.8	400.9	406.8	413.9	414.9	421.0	422.4	426.2	423.2
85°	275.4	275.2	272.7	273.2	271.3	272.2	271.1	272.3	271.2	271.3	268.5
87.5°	131.9	133.1	130.2	131.2	128.4	129.7	127.3	129.1	126.2	126.7	122.4
90°	36.4	37.5	38.3	39.4	40.8	43.7	46.8	49.7	53.1	55.8	59.0
92.5°	40.9	42.6	44.2	45.7	47.3	52.1	56.8	61.6	66.4	71.0	75.7
95°	46.9	48.3	49.7	51.3	52.7	59.5	66.4	73.2	80.1	86.9	93.8
97.5°	53.0	53.9	54.8	55.7	56.6	64.7	72.8	80.9	89.0	97.0	105.0
100°	61.1	62.1	63.2	64.4	65.4	84.0	102.6	121.2	139.7	158.3	176.8
102.5°	100.3	106.9	113.4	120.1	126.6	171.7	216.8	261.8	306.6	351.7	396.7
105°	231.0	252.9	275.1	297.1	319.0	387.2	455.5	523.7	591.6	659.8	728.0
107.5°	469.4	507.9	546.7	585.3	623.8	688.0	752.1	816.2	880.4	944.5	1008.3
110°	720.3	753.3	787.0	820.2	853.6	904.3	955.4	1006.2	1057.1	1107.9	1158.8



TEST NUMBER: P1444822
 CATALOG NUMBER: EHBR1-36-UNV-TA-L940-UPL30

CANDELA DISTRIBUTION (continued):

	192.5°	195°	197.5°	200°	202.5°	205°	207.5°	210°	212.5°	215°	217.5°
112.5°	866.6	886.7	907.1	927.3	947.6	984.9	1022.5	1059.8	1097.2	1134.3	1171.6
115°	904.8	915.3	926.1	936.9	947.8	970.3	992.8	1015.4	1037.9	1060.3	1082.9
117.5°	879.1	883.0	886.9	890.6	894.5	906.0	917.7	929.2	940.9	952.5	964.0
120°	816.0	815.7	815.5	815.1	814.9	818.4	822.2	825.7	829.4	832.9	836.3
122.5°	744.8	742.1	739.5	736.8	734.2	732.8	731.8	730.4	729.4	728.0	726.9
125°	677.2	674.6	671.9	669.2	666.3	663.1	660.0	656.6	653.4	650.2	646.9
127.5°	619.8	617.3	615.1	612.6	610.0	606.3	602.7	599.0	595.5	591.5	587.9
130°	572.0	570.3	568.7	566.6	564.9	561.6	558.5	555.3	552.1	548.8	545.7
132.5°	537.7	536.4	535.4	533.8	532.6	529.6	527.0	524.0	521.0	518.1	515.3
135°	511.3	510.5	510.0	509.1	508.2	505.8	503.8	501.5	499.4	497.1	495.0
137.5°	489.4	489.1	488.8	488.6	488.3	486.4	484.6	482.8	481.1	479.1	477.5
140°	475.3	475.1	475.1	474.8	474.5	472.5	470.7	468.7	466.8	464.8	462.9
142.5°	460.8	460.8	460.6	460.3	460.1	458.6	457.3	455.8	454.2	452.7	451.2
145°	450.1	450.3	450.5	450.3	450.5	448.7	447.0	445.0	443.6	441.7	440.0
147.5°	439.7	439.8	440.2	440.2	440.6	439.0	437.7	436.1	434.9	433.2	432.0
150°	432.1	432.2	432.2	432.1	432.1	430.5	429.2	427.6	426.2	424.6	423.3
152.5°	424.6	424.7	424.9	425.0	425.2	423.6	422.1	420.5	419.1	417.3	415.8
155°	418.0	418.1	418.3	418.3	418.3	416.9	415.5	413.9	412.5	411.0	409.6
157.5°	412.6	412.8	413.0	413.2	413.3	412.1	410.9	409.6	408.3	407.0	405.8
160°	408.8	409.1	409.3	409.5	409.6	408.6	407.7	406.5	405.6	404.3	403.2
162.5°	406.7	406.9	407.1	407.3	407.5	406.5	405.6	404.5	403.5	402.3	401.3
165°	403.5	403.5	403.6	403.5	403.5	402.8	402.3	401.6	400.9	400.0	399.3
167.5°	404.1	404.1	404.1	404.1	404.1	403.6	403.4	402.8	402.2	401.7	401.2
170°	403.6	403.7	403.7	403.6	403.6	403.0	402.8	402.2	401.8	401.2	400.6
172.5°	403.0	402.8	402.8	402.6	402.3	401.9	401.6	401.4	401.1	400.7	400.3
175°	402.4	402.2	402.1	401.8	401.5	401.4	401.3	401.3	401.1	401.0	400.8
177.5°	405.1	404.6	404.1	403.7	403.2	403.0	403.0	402.8	402.8	402.8	402.6
180°	401.2	401.2	401.2	401.2	401.2	401.2	401.2	401.2	401.2	401.2	401.2



TEST NUMBER: P1444822
 CATALOG NUMBER: EHBR1-36-UNV-TA-L940-UPL30

CANDELA DISTRIBUTION (continued):

	220°	222.5°	225°	227.5°	230°	232.5°	235°	237.5°	240°	242.5°	245°
0°	28971.7	28971.7	28971.7	28971.7	28971.7	28971.7	28971.7	28971.7	28971.7	28971.7	28971.7
2.5°	29228.8	29048.2	29024.5	29037.2	29067.2	29078.4	29111.0	29119.9	29152.7	29160.7	29192.2
5°	29831.9	29593.3	29605.2	29662.6	29749.4	29801.2	29886.5	29931.2	30012.7	30049.8	30123.4
7.5°	30467.9	30280.5	30338.9	30435.6	30554.4	30636.6	30739.2	30806.0	30894.3	30949.2	31020.0
10°	30780.1	30728.7	30793.1	30869.2	30937.0	30990.0	31033.5	31068.2	31091.1	31112.4	31121.7
12.5°	30542.5	30622.0	30632.9	30625.5	30580.6	30546.3	30469.4	30417.1	30324.2	30267.6	30157.1
15°	29661.6	29836.3	29739.5	29593.1	29378.8	29200.1	28947.8	28759.9	28497.2	28319.0	28055.2
17.5°	28115.7	28336.2	28084.1	27745.2	27314.1	26945.3	26486.0	26121.6	25664.9	25332.7	24906.6
20°	25939.3	26145.3	25695.8	25134.0	24467.2	23905.9	23244.1	22716.0	22101.0	21643.4	21091.3
22.5°	23229.6	23376.4	22743.0	21985.6	21136.1	20434.9	19643.6	19010.5	18308.6	17785.6	17196.9
25°	20231.7	20271.4	19511.5	18639.1	17692.1	16904.1	16059.3	15393.8	14677.9	14147.8	13570.1
27.5°	17206.0	17147.9	16326.7	15401.6	14405.5	13586.5	12762.5	12138.8	11511.8	11034.3	10536.5
30°	14350.1	14209.5	13356.8	12405.9	11439.0	10704.9	10020.9	9519.9	9021.2	8642.4	8242.8
32.5°	11731.2	11532.7	10702.7	9811.9	8997.2	8430.6	7923.5	7544.4	7141.6	6821.7	6486.4
35°	9411.5	9200.1	8464.8	7709.6	7092.9	6675.3	6276.7	5965.7	5623.7	5353.8	5062.6
37.5°	7420.7	7247.5	6631.5	6037.2	5570.8	5247.2	4920.6	4666.4	4383.8	4265.1	3953.9
40°	5728.8	5607.7	5126.1	4687.9	4337.7	4185.7	3854.1	3616.7	3405.5	3231.4	3062.7
42.5°	4468.5	4425.7	3957.0	3615.3	3368.7	3177.2	2992.4	2842.4	2696.4	2576.3	2462.9
45°	3279.3	3245.3	3037.3	2840.0	2672.0	2538.1	2413.1	2310.0	2214.5	2135.4	2063.5
47.5°	2553.5	2542.6	2422.8	2300.5	2194.7	2108.7	2027.6	1959.2	1895.8	1843.0	1825.7
50°	2076.9	2075.5	2005.2	1929.7	1854.3	1804.6	1752.9	1712.4	1671.7	1640.0	1606.5
52.5°	1764.6	1757.1	1709.6	1663.0	1618.2	1585.6	1552.5	1526.6	1499.7	1480.1	1459.3
55°	1519.2	1527.2	1499.8	1472.0	1444.0	1423.6	1400.4	1383.4	1365.0	1352.6	1340.0
57.5°	1348.7	1359.4	1344.9	1329.2	1312.1	1298.8	1282.8	1271.0	1258.7	1250.7	1243.5
60°	1224.6	1236.3	1230.5	1222.5	1212.0	1204.1	1193.9	1187.3	1179.4	1175.0	1170.9
62.5°	1119.5	1134.0	1131.9	1128.1	1121.4	1116.9	1111.5	1108.5	1103.3	1101.3	1099.3
65°	1014.5	1030.8	1030.5	1028.6	1024.9	1023.6	1020.2	1019.5	1016.8	1017.9	1017.6
67.5°	931.9	946.1	949.2	951.4	951.3	952.1	951.9	953.3	953.3	955.3	956.6
70°	872.3	882.2	884.5	886.9	887.6	889.4	889.4	890.7	890.4	892.1	892.2
72.5°	812.0	825.1	827.4	829.4	829.4	831.2	830.2	829.9	827.3	826.7	825.0
75°	737.1	753.8	757.4	759.8	760.1	761.7	759.5	758.1	753.8	752.0	749.0
77.5°	658.9	676.1	678.7	679.5	678.1	678.5	673.8	670.5	665.1	662.8	659.9
80°	556.9	582.4	584.4	582.8	578.8	578.2	573.6	570.5	564.0	561.8	559.3
82.5°	423.8	453.6	457.8	459.7	456.4	457.2	452.8	451.1	445.0	444.0	440.0
85°	267.6	297.4	302.3	301.6	298.4	297.7	295.1	295.9	295.4	297.0	297.8
87.5°	123.0	151.9	158.8	156.5	156.2	154.2	149.5	151.3	154.1	155.9	156.1
90°	62.0	73.8	76.7	74.8	70.2	67.9	63.5	61.7	57.8	55.9	52.1
92.5°	80.5	85.2	90.0	85.8	81.6	77.3	73.1	68.8	64.7	60.4	56.3
95°	100.6	107.2	114.0	108.4	102.8	97.1	91.5	85.9	80.3	74.6	69.0
97.5°	113.1	120.8	128.8	123.3	117.6	111.9	106.3	100.6	95.0	89.3	83.7
100°	195.5	213.5	232.1	216.1	200.0	184.1	168.2	152.0	136.1	120.2	104.1
102.5°	441.6	486.4	531.2	490.8	450.4	409.9	369.6	329.2	288.8	248.2	207.9
105°	796.0	863.7	931.7	869.8	808.1	746.5	684.9	623.2	561.5	499.7	438.2
107.5°	1072.4	1135.8	1199.5	1143.7	1087.9	1032.3	976.3	920.6	864.8	808.9	753.2
110°	1209.6	1259.4	1310.1	1272.4	1235.1	1197.4	1160.1	1122.4	1085.1	1047.8	1010.5



TEST NUMBER: P1444822
 CATALOG NUMBER: EHBR1-36-UNV-TA-L940-UPL30

CANDELA DISTRIBUTION (continued):

	220°	222.5°	225°	227.5°	230°	232.5°	235°	237.5°	240°	242.5°	245°
112.5°	1208.8	1244.9	1281.8	1259.6	1237.8	1215.7	1193.9	1171.8	1150.1	1128.0	1106.4
115°	1105.2	1126.1	1148.2	1139.3	1130.6	1121.9	1113.0	1104.6	1095.7	1087.0	1078.6
117.5°	975.4	985.1	996.1	994.3	992.7	990.9	989.3	987.5	986.1	984.6	983.0
120°	839.9	841.5	844.4	845.3	846.4	847.3	848.4	849.4	850.5	851.6	852.8
122.5°	725.5	722.0	720.0	720.9	721.7	722.5	723.5	724.4	725.5	726.4	727.5
125°	643.6	637.8	633.8	632.1	630.6	628.9	627.3	625.6	624.2	622.5	621.1
127.5°	584.1	577.9	573.5	569.9	566.3	562.5	559.0	555.3	551.8	548.1	544.7
130°	542.4	536.3	532.4	527.9	523.6	518.8	514.5	509.9	505.3	500.8	496.4
132.5°	512.3	506.5	502.9	498.5	494.3	489.9	485.7	481.1	476.8	472.3	468.2
135°	492.7	487.4	484.5	480.5	476.8	472.7	468.8	464.7	460.9	456.7	453.0
137.5°	475.6	470.4	468.0	464.8	461.7	458.5	455.4	452.1	448.9	445.5	442.4
140°	461.0	455.6	453.0	451.2	449.4	447.4	445.6	443.6	441.9	440.0	438.1
142.5°	449.7	444.5	442.3	441.0	440.0	438.7	437.9	436.6	435.5	433.9	432.8
145°	438.3	432.5	430.0	429.7	429.8	429.5	429.3	429.2	429.0	428.7	428.5
147.5°	430.4	424.5	422.0	422.3	422.4	422.4	422.8	422.7	423.1	423.1	423.2
150°	421.6	414.9	412.1	412.6	412.9	413.5	413.9	414.3	414.9	415.3	415.7
152.5°	414.1	406.2	402.9	403.5	404.1	404.5	405.1	405.7	406.4	407.0	407.6
155°	408.0	399.4	395.9	395.9	396.2	396.4	396.7	397.1	397.4	397.7	398.2
157.5°	404.2	395.3	392.0	391.9	391.9	392.0	392.0	392.1	392.3	392.5	393.0
160°	402.1	393.1	389.9	389.7	389.8	389.7	389.7	389.7	389.9	390.1	390.4
162.5°	400.0	391.3	388.2	387.9	387.8	387.7	387.8	387.7	387.8	387.8	388.1
165°	398.5	390.8	388.1	388.1	388.3	388.2	388.4	388.6	388.8	389.0	389.3
167.5°	400.4	393.7	391.6	391.2	390.9	390.5	390.5	390.2	390.2	389.9	389.9
170°	399.9	394.6	392.7	392.6	392.8	392.8	392.8	392.8	392.8	392.8	393.0
172.5°	400.0	396.0	394.6	394.8	395.2	395.4	395.8	396.0	396.4	396.7	397.1
175°	400.6	398.3	397.6	397.6	397.8	398.0	398.2	398.3	398.5	398.7	399.0
177.5°	402.5	401.7	401.4	401.4	401.4	401.4	401.4	401.4	401.4	401.4	401.4
180°	401.2	401.2	401.2	401.2	401.2	401.2	401.2	401.2	401.2	401.2	401.2



TEST NUMBER: P1444822
 CATALOG NUMBER: EHBR1-36-UNV-TA-L940-UPL30

CANDELA DISTRIBUTION (continued):

	247.5°	250°	252.5°	255°	257.5°	260°	262.5°	265°	267.5°	270°	272.5°
0°	28971.7	28971.7	28971.7	28971.7	28971.7	28971.7	28971.7	28971.7	28971.7	28971.7	28971.7
2.5°	29198.1	29232.1	29229.5	29261.3	29259.7	29289.6	29283.7	29309.6	29303.6	29325.8	29312.7
5°	30155.9	30220.5	30242.0	30300.4	30312.5	30364.8	30365.9	30407.4	30402.4	30434.9	30417.6
7.5°	31061.8	31122.3	31151.0	31196.3	31219.1	31256.6	31271.3	31302.3	31309.6	31327.9	31327.3
10°	31138.3	31138.1	31152.3	31145.9	31158.6	31151.2	31166.7	31161.1	31184.0	31178.1	31195.4
12.5°	30109.5	30007.4	29970.1	29878.3	29858.3	29779.6	29785.2	29734.7	29759.1	29728.1	29780.9
15°	27898.3	27661.5	27544.5	27338.5	27273.8	27111.1	27097.8	26989.8	27018.9	26962.4	27045.0
17.5°	24630.8	24258.0	24053.3	23752.6	23633.1	23402.9	23356.8	23217.6	23239.2	23169.1	23269.0
20°	20735.2	20284.5	20026.5	19678.7	19523.5	19249.1	19176.2	19020.6	19040.1	18970.4	19083.3
22.5°	16795.1	16323.4	16031.9	15667.5	15469.3	15211.3	15133.8	14977.3	14986.3	14920.8	15029.4
25°	13174.2	12722.0	12439.1	12108.0	11936.1	11699.5	11618.1	11477.7	11485.6	11431.6	11529.1
27.5°	10191.3	9820.2	9583.6	9305.9	9151.8	8957.3	8877.9	8759.9	8759.5	8719.9	8801.4
30°	7963.9	7654.2	7441.8	7200.0	7055.4	6879.7	6803.1	6697.4	6692.8	6664.7	6729.5
32.5°	6235.5	5960.1	5766.3	5553.6	5423.7	5273.0	5200.4	5115.6	5107.8	5082.4	5135.5
35°	4847.4	4615.4	4448.8	4269.6	4282.9	4060.6	4097.6	3924.9	3878.1	3867.9	3907.4
37.5°	3746.4	3566.8	3431.4	3297.3	3206.4	3112.5	3061.9	3016.5	3011.4	3007.0	3034.6
40°	2932.4	2806.7	2708.3	2616.2	2553.7	2496.4	2464.8	2439.8	2433.9	2430.6	2447.3
42.5°	2373.4	2288.5	2225.0	2169.0	2131.0	2099.7	2082.4	2068.5	2063.9	2064.1	2073.9
45°	2005.2	1953.8	1912.9	1877.9	1853.7	1864.3	1832.9	1849.4	1827.7	1850.2	1835.3
47.5°	1765.8	1722.1	1696.7	1672.0	1657.3	1645.5	1645.9	1646.1	1650.8	1651.5	1656.3
50°	1581.2	1555.8	1538.2	1522.4	1514.8	1508.6	1510.8	1512.3	1516.8	1517.2	1520.7
52.5°	1444.5	1427.8	1417.2	1407.4	1404.0	1400.4	1401.9	1401.3	1403.3	1402.3	1405.2
55°	1333.3	1325.4	1322.1	1318.5	1318.9	1318.0	1318.7	1315.1	1313.0	1310.3	1312.7
57.5°	1242.0	1240.9	1243.2	1244.7	1248.9	1250.4	1251.3	1247.2	1243.4	1239.8	1241.9
60°	1171.6	1173.4	1178.9	1183.5	1189.4	1192.2	1194.0	1191.6	1188.8	1185.9	1187.7
62.5°	1102.3	1104.9	1111.6	1116.7	1123.9	1127.8	1131.9	1132.1	1133.3	1132.1	1133.3
65°	1021.7	1025.1	1031.1	1035.2	1042.0	1045.4	1049.7	1050.4	1052.8	1052.3	1054.3
67.5°	960.5	963.6	968.6	972.5	978.6	982.0	985.8	986.0	986.9	986.6	988.6
70°	895.3	896.8	901.3	904.6	910.6	914.1	918.4	919.7	922.4	922.9	925.0
72.5°	825.7	825.1	827.8	829.3	833.7	836.5	842.0	845.0	849.6	850.7	852.4
75°	749.9	749.2	752.5	753.8	757.6	760.4	766.6	770.5	777.5	780.3	779.6
77.5°	662.1	663.7	669.7	673.0	678.1	681.7	689.7	696.0	708.8	714.4	708.7
80°	564.0	565.6	571.8	575.0	581.7	586.0	594.9	602.4	613.9	616.3	613.1
82.5°	443.5	443.8	449.4	451.8	460.6	466.9	478.2	484.2	491.3	490.1	489.3
85°	302.3	306.4	313.4	320.4	331.1	341.4	352.1	360.9	354.7	364.5	353.5
87.5°	161.6	161.2	170.6	169.1	184.2	192.9	202.1	206.5	211.4	210.5	210.6
90°	50.7	48.0	47.7	44.8	45.3	42.2	43.4	40.5	42.3	38.8	44.1
92.5°	52.0	49.8	47.4	45.3	42.9	40.7	38.3	36.1	33.7	31.5	33.7
95°	63.4	61.3	59.3	57.0	55.0	52.8	50.8	48.6	46.6	44.4	47.0
97.5°	78.1	76.9	75.6	74.4	73.2	71.9	70.7	69.5	68.2	67.0	68.8
100°	88.1	88.1	88.1	88.1	87.9	87.9	87.9	87.9	87.9	87.9	89.3
102.5°	167.4	163.4	159.4	155.2	151.2	147.2	143.2	139.1	135.1	131.1	137.0
105°	376.5	360.7	344.8	329.1	313.1	297.4	281.5	265.8	250.0	234.2	250.5
107.5°	697.6	668.7	639.9	611.2	582.3	553.5	524.7	496.0	467.2	438.4	464.2
110°	973.0	942.4	911.8	881.2	850.7	820.0	789.6	759.0	728.5	698.0	722.6



TEST NUMBER: P1444822
 CATALOG NUMBER: EHBR1-36-UNV-TA-L940-UPL30

CANDELA DISTRIBUTION (continued):

	247.5°	250°	252.5°	255°	257.5°	260°	262.5°	265°	267.5°	270°	272.5°
112.5°	1084.6	1064.6	1044.8	1025.2	1005.4	985.8	966.0	946.5	926.8	907.1	919.1
115°	1069.9	1060.5	1051.0	1041.7	1032.2	1022.7	1013.3	1004.0	994.7	985.4	986.1
117.5°	981.6	978.2	975.1	971.8	968.6	965.6	962.5	959.5	956.4	953.5	946.8
120°	854.1	855.0	855.7	856.7	857.8	858.9	859.8	861.0	862.2	863.4	854.5
122.5°	728.6	730.7	732.9	735.3	737.6	740.0	742.4	745.0	747.7	750.3	741.4
125°	619.5	621.6	623.8	626.0	628.0	630.6	633.1	635.7	638.3	641.0	633.4
127.5°	541.2	541.8	542.2	543.1	543.8	544.8	545.8	547.0	548.2	549.5	544.7
130°	491.8	490.9	489.8	488.9	487.9	487.3	486.7	486.2	485.8	485.5	483.4
132.5°	463.8	461.6	459.5	457.4	455.5	453.7	451.9	450.5	449.1	447.7	447.1
135°	448.9	446.0	443.1	440.4	437.7	435.3	432.8	430.7	428.6	426.5	427.0
137.5°	439.2	436.4	433.5	430.8	428.0	425.8	423.2	420.9	418.9	416.9	417.7
140°	436.1	433.2	430.4	427.8	425.3	422.8	420.5	418.3	416.1	414.2	414.7
142.5°	431.4	429.1	426.4	424.1	421.6	419.4	417.3	415.4	413.2	411.6	412.2
145°	428.2	426.4	424.5	422.6	420.9	419.3	417.5	416.2	414.8	413.7	414.0
147.5°	423.2	422.0	420.5	419.1	417.7	416.6	415.4	414.4	413.4	412.5	412.6
150°	416.2	415.3	414.3	413.5	412.6	411.9	411.1	410.5	409.8	409.3	409.2
152.5°	408.2	407.4	406.6	405.8	405.1	404.4	403.8	403.2	402.8	402.2	402.1
155°	398.6	398.2	397.8	397.6	397.3	397.2	396.8	396.9	396.6	396.6	396.7
157.5°	393.2	393.2	393.0	393.1	393.1	393.2	393.1	393.3	393.2	393.4	393.7
160°	390.7	390.6	390.4	390.4	390.3	390.1	390.0	390.1	390.0	390.0	390.4
162.5°	388.3	388.6	388.7	389.0	389.2	389.4	389.8	390.3	390.5	390.8	391.2
165°	389.7	389.6	389.6	389.5	389.6	389.7	389.8	390.0	390.1	390.3	390.8
167.5°	389.8	390.1	390.2	390.5	390.7	391.1	391.4	391.9	392.3	392.9	393.3
170°	393.0	393.0	393.0	393.0	393.0	393.2	393.2	393.3	393.5	393.8	394.1
172.5°	397.3	397.3	397.2	397.3	397.2	397.3	397.3	397.4	397.4	397.5	397.7
175°	399.0	399.4	399.6	399.9	400.0	400.0	400.2	400.4	400.6	400.9	400.9
177.5°	401.4	401.5	401.5	401.5	401.5	401.6	401.6	401.6	401.6	401.5	401.7
180°	401.2	401.2	401.2	401.2	401.2	401.2	401.2	401.2	401.2	401.2	401.2



TEST NUMBER: P1444822
 CATALOG NUMBER: EHBR1-36-UNV-TA-L940-UPL30

CANDELA DISTRIBUTION (continued):

	275°	277.5°	280°	282.5°	285°	287.5°	290°	292.5°	295°	297.5°	300°
0°	28971.7	28971.7	28971.7	28971.7	28971.7	28971.7	28971.7	28971.7	28971.7	28971.7	28971.7
2.5°	29334.4	29319.6	29334.6	29319.4	29334.6	29316.4	29328.8	29309.0	29314.0	29293.5	29298.8
5°	30443.5	30420.1	30432.6	30402.1	30405.4	30364.8	30364.0	30316.8	30304.3	30250.5	30226.9
7.5°	31340.4	31332.7	31337.0	31317.5	31315.2	31287.5	31274.3	31235.3	31210.7	31161.1	31127.3
10°	31198.4	31221.3	31227.2	31250.5	31255.3	31278.4	31283.3	31306.4	31311.1	31328.3	31328.4
12.5°	29778.4	29856.1	29874.6	29970.5	30010.9	30120.7	30179.4	30300.4	30372.2	30492.8	30566.8
15°	27042.8	27177.1	27230.7	27418.0	27521.6	27740.2	27877.5	28128.5	28305.7	28572.3	28762.5
17.5°	23277.8	23465.5	23550.1	23804.1	23969.7	24292.5	24525.0	24907.8	25200.8	25626.2	25963.4
20°	19102.6	19311.2	19426.2	19715.9	19911.4	20288.4	20578.7	21049.1	21441.4	21980.4	22441.4
22.5°	15063.5	15262.0	15389.7	15684.4	15904.5	16297.7	16622.2	17118.7	17558.2	18165.6	18718.3
25°	11565.9	11747.9	11863.2	12129.8	12336.6	12697.9	13007.7	13485.2	13915.2	14524.4	15091.2
27.5°	8842.0	8994.4	9105.6	9332.9	9515.3	9821.7	10087.9	10482.4	10853.0	11380.1	11884.7
30°	6769.2	6904.3	7012.6	7210.6	7379.6	7645.3	7879.3	8210.8	8517.4	8936.8	9338.3
32.5°	5172.9	5289.1	5385.6	5558.8	5712.2	5951.4	6162.3	6452.9	6716.0	7071.7	7402.0
35°	3944.1	4172.9	4156.7	4395.7	4434.2	4605.9	4794.0	5048.0	5281.1	5583.5	5864.7
37.5°	3061.3	3125.6	3194.5	3300.2	3411.2	3567.5	3726.4	4036.7	4150.6	4379.2	4611.8
40°	2468.6	2512.1	2557.6	2629.0	2706.7	2816.8	2932.5	3080.6	3232.3	3417.6	3607.0
42.5°	2087.0	2111.6	2140.5	2182.6	2230.5	2300.2	2377.7	2478.1	2583.5	2714.1	2847.2
45°	1864.6	1852.9	1861.5	1884.1	1912.9	1955.3	2004.2	2066.4	2135.1	2219.6	2309.5
47.5°	1657.3	1662.1	1664.6	1676.9	1692.3	1720.7	1750.4	1792.6	1874.1	1898.9	1948.0
50°	1520.4	1522.7	1521.9	1528.1	1536.0	1554.5	1573.6	1602.2	1630.8	1668.6	1704.6
52.5°	1405.6	1408.8	1408.4	1412.5	1416.7	1428.4	1440.5	1460.7	1479.4	1503.4	1524.2
55°	1315.0	1319.4	1321.1	1324.5	1326.6	1332.7	1337.6	1347.2	1355.2	1368.8	1381.4
57.5°	1245.3	1251.3	1254.1	1255.3	1252.8	1252.5	1250.9	1253.0	1254.6	1261.8	1268.9
60°	1190.5	1195.3	1196.0	1195.3	1190.7	1187.6	1182.4	1180.8	1179.9	1183.5	1187.3
62.5°	1133.0	1134.7	1133.5	1132.1	1127.0	1123.8	1118.5	1116.6	1114.7	1117.2	1119.3
65°	1053.5	1055.0	1053.5	1052.7	1048.1	1045.6	1041.1	1039.6	1037.0	1037.7	1037.2
67.5°	989.0	990.5	989.3	988.1	984.9	983.4	980.1	977.9	974.9	973.7	971.5
70°	924.7	925.9	924.0	922.9	919.3	917.9	914.7	914.0	911.6	911.1	908.5
72.5°	850.7	850.8	848.3	847.5	844.8	844.7	843.4	844.6	844.4	845.7	845.2
75°	775.0	773.9	770.8	770.2	768.1	769.1	767.7	769.5	769.7	772.5	772.9
77.5°	699.2	695.2	689.1	686.3	682.2	681.6	679.3	680.8	680.3	683.5	684.9
80°	603.4	598.6	590.8	587.0	582.2	581.4	579.3	581.4	580.3	584.1	586.8
82.5°	481.8	477.6	469.5	466.4	460.9	461.4	459.0	461.4	461.1	466.7	469.8
85°	356.4	353.6	345.2	337.8	329.5	324.7	319.9	319.1	317.7	319.9	321.9
87.5°	205.8	203.3	196.7	192.4	177.9	178.6	172.9	172.5	171.1	169.8	172.9
90°	43.8	48.4	48.3	52.5	52.8	57.6	58.3	62.9	63.2	67.8	68.8
92.5°	36.1	38.3	40.6	42.9	45.2	47.4	49.7	52.0	56.9	61.6	66.7
95°	49.7	52.4	55.0	57.6	60.2	62.9	65.5	68.1	75.3	82.5	89.6
97.5°	70.6	72.2	74.0	75.7	77.5	79.2	81.0	82.7	90.6	98.3	106.0
100°	90.6	92.0	93.4	94.9	96.3	97.7	99.1	100.5	115.7	130.6	145.5
102.5°	143.0	149.0	154.9	160.9	167.0	172.9	178.9	184.8	219.1	253.3	287.5
105°	266.8	283.1	299.5	315.9	332.2	348.5	364.9	381.2	436.0	490.8	545.8
107.5°	490.0	515.8	541.6	567.5	593.3	619.1	644.9	670.8	724.2	777.8	831.2
110°	747.1	771.8	796.3	821.0	845.5	870.2	894.8	919.6	951.8	983.7	1015.9



TEST NUMBER: P1444822
 CATALOG NUMBER: EHBR1-36-UNV-TA-L940-UPL30

CANDELA DISTRIBUTION (continued):

	275°	277.5°	280°	282.5°	285°	287.5°	290°	292.5°	295°	297.5°	300°
112.5°	931.1	943.0	955.0	967.0	979.1	991.3	1003.3	1015.4	1031.4	1047.5	1063.6
115°	986.9	987.6	988.5	989.4	990.2	991.1	992.2	993.1	998.4	1003.4	1008.5
117.5°	940.3	933.7	927.3	920.7	914.3	908.1	901.7	895.5	894.5	893.5	892.8
120°	845.8	837.1	828.3	819.5	811.0	802.3	793.9	785.6	781.3	777.0	772.9
122.5°	732.6	724.0	715.3	706.6	698.1	689.7	681.4	673.1	670.2	667.2	664.4
125°	626.1	618.8	611.6	604.5	597.6	590.7	583.9	577.2	577.2	577.0	577.2
127.5°	540.4	535.9	531.6	527.5	523.5	519.4	515.5	511.5	513.6	515.7	517.7
130°	481.5	479.6	477.9	476.2	474.8	473.3	471.8	470.5	474.0	477.5	481.0
132.5°	447.0	446.6	446.6	446.5	446.7	446.9	447.3	447.4	451.5	455.4	459.5
135°	427.5	428.1	429.0	429.8	431.0	431.9	433.1	434.1	438.2	441.8	445.8
137.5°	418.7	419.6	420.8	421.9	423.4	424.8	426.3	427.7	430.9	433.9	436.9
140°	415.6	416.3	417.4	418.4	419.5	420.5	421.9	423.1	425.8	428.1	430.5
142.5°	413.1	413.6	414.6	415.6	416.7	417.7	418.9	419.9	421.8	423.5	425.7
145°	414.6	415.1	416.0	416.4	417.3	418.1	419.1	419.9	421.2	422.2	423.5
147.5°	413.1	413.4	413.9	414.5	415.1	415.7	416.2	416.7	417.7	418.4	419.2
150°	409.5	409.6	409.8	410.0	410.5	410.9	411.3	411.5	412.3	412.9	413.7
152.5°	402.5	402.5	402.8	402.9	403.3	403.6	403.8	404.1	404.9	405.4	406.1
155°	397.0	397.4	397.8	398.2	398.7	398.9	399.5	399.8	400.3	400.7	401.3
157.5°	394.1	394.4	394.8	395.1	395.6	395.9	396.4	396.7	397.3	397.5	398.0
160°	391.0	391.6	392.1	392.6	393.2	393.7	394.4	395.0	395.4	395.8	396.1
162.5°	391.7	392.0	392.5	392.8	393.2	393.6	394.0	394.4	395.1	395.6	396.2
165°	391.4	391.9	392.7	393.0	393.7	394.3	394.8	395.4	395.8	396.1	396.5
167.5°	393.9	394.3	395.0	395.5	396.0	396.6	397.2	397.7	398.1	398.4	398.7
170°	394.6	395.1	395.7	396.0	396.5	397.0	397.5	398.0	398.6	399.0	399.6
172.5°	398.2	398.6	398.9	399.1	399.6	400.0	400.4	400.8	401.3	401.6	402.1
175°	400.9	400.9	401.0	401.1	401.3	401.3	401.4	401.5	401.6	401.7	401.8
177.5°	401.9	402.1	402.3	402.4	402.6	402.8	402.9	403.1	403.1	403.1	403.1
180°	401.2	401.2	401.2	401.2	401.2	401.2	401.2	401.2	401.2	401.2	401.2



TEST NUMBER: P1444822
 CATALOG NUMBER: EHBR1-36-UNV-TA-L940-UPL30

CANDELA DISTRIBUTION (continued):

	302.5°	305°	307.5°	310°	312.5°	315°	317.5°	320°	322.5°	325°	327.5°
0°	28971.7	28971.7	28971.7	28971.7	28971.7	28971.7	28971.7	28971.7	28971.7	28971.7	28971.7
2.5°	29278.3	29279.6	29255.9	29254.7	29232.5	29229.7	29208.2	29201.6	29184.1	29177.7	29159.9
5°	30166.6	30137.8	30071.4	30032.2	29966.6	29923.1	29852.0	29805.6	29737.0	29685.2	29616.2
7.5°	31065.0	31020.3	30945.6	30885.2	30794.1	30721.3	30614.6	30527.2	30411.7	30311.7	30190.4
10°	31328.4	31321.6	31302.5	31274.9	31232.5	31184.8	31112.2	31036.5	30935.3	30825.3	30690.5
12.5°	30680.1	30750.2	30845.6	30902.2	30971.0	31001.2	31029.4	31022.3	31003.8	30948.1	30870.2
15°	29037.9	29234.6	29495.1	29696.9	29929.2	30097.9	30284.4	30400.5	30516.4	30569.9	30602.6
17.5°	26425.4	26797.9	27265.0	27652.0	28098.6	28457.3	28850.5	29146.5	29450.9	29669.0	29866.2
20°	23069.7	23609.4	24269.9	24853.5	25532.0	26121.8	26767.9	27298.4	27845.5	28273.3	28678.2
22.5°	19429.8	20070.8	20869.4	21609.2	22484.0	23270.2	24157.2	24929.2	25735.2	26408.6	27059.7
25°	15850.7	16553.6	17426.8	18252.2	19243.0	20157.5	21209.4	22171.5	23213.3	24117.9	25011.4
27.5°	12582.4	13272.5	14164.0	15042.6	16090.3	17064.7	18191.8	19251.9	20438.1	21532.0	22651.0
30°	9896.2	10481.5	11280.8	12131.9	13165.2	14156.7	15296.0	16386.3	17620.3	18814.8	20075.2
32.5°	7840.4	8286.3	8914.8	9634.4	10587.8	11531.7	12616.5	13669.0	14884.2	16090.8	17401.7
35°	6226.7	6574.5	7053.7	7615.3	8422.6	9236.2	10195.8	11153.0	12286.7	13431.6	14705.8
37.5°	4910.1	5192.3	5567.6	5989.5	6637.0	7304.8	8091.6	8885.1	9870.2	10885.1	12039.8
40°	3834.3	4062.7	4354.9	4669.5	5158.5	5673.0	6281.5	6896.9	7688.3	8517.8	9473.4
42.5°	3012.1	3180.7	3387.1	3616.9	4073.2	4346.3	4758.9	5204.0	5785.9	6388.0	7106.5
45°	2419.0	2534.0	2677.1	2831.3	3043.0	3274.7	3557.4	3853.7	4406.5	4677.6	5114.5
47.5°	2020.1	2097.3	2188.3	2285.5	2410.4	2545.2	2712.8	2884.1	3105.7	3335.4	3604.7
50°	1751.5	1829.9	1861.1	1911.6	1983.8	2060.8	2155.3	2249.7	2368.6	2489.1	2627.7
52.5°	1552.0	1577.6	1611.7	1643.6	1688.4	1776.1	1804.4	1853.8	1920.5	1985.6	2058.5
55°	1399.8	1416.5	1438.6	1457.9	1484.9	1510.8	1548.2	1581.1	1625.5	1664.9	1713.1
57.5°	1281.3	1291.9	1307.3	1320.0	1337.5	1352.0	1373.9	1391.8	1417.3	1439.6	1468.8
60°	1195.1	1202.3	1212.5	1220.8	1232.0	1239.6	1250.5	1258.8	1272.3	1283.6	1299.9
62.5°	1124.9	1128.5	1135.2	1140.1	1147.1	1151.0	1156.8	1160.5	1167.9	1173.6	1182.7
65°	1040.5	1041.3	1045.8	1047.8	1053.4	1055.5	1060.2	1061.9	1068.0	1072.2	1080.2
67.5°	971.3	969.4	969.5	967.9	968.6	967.0	967.4	965.7	968.2	969.5	975.6
70°	908.2	905.5	904.6	901.7	900.8	897.8	897.0	894.3	894.0	893.2	895.3
72.5°	846.6	845.8	846.1	844.1	843.9	841.8	841.9	840.6	842.0	842.7	845.5
75°	775.9	776.1	777.5	775.7	776.2	774.5	775.1	773.5	774.4	774.0	776.8
77.5°	689.8	691.8	695.6	694.8	696.0	694.1	694.9	692.7	693.3	691.8	692.9
80°	592.9	597.2	602.2	602.0	604.2	602.8	604.7	602.6	603.4	600.8	600.2
82.5°	477.9	481.6	487.0	487.2	491.9	492.7	498.0	497.8	501.1	499.0	497.5
85°	326.7	329.2	333.9	336.5	341.4	344.3	349.4	351.4	347.8	354.4	349.2
87.5°	170.6	176.9	173.4	181.7	179.7	188.1	186.3	194.1	192.5	199.2	198.3
90°	74.6	76.0	82.2	83.8	91.0	93.4	95.8	92.9	94.9	92.2	94.5
92.5°	71.4	76.6	81.5	86.4	91.3	96.3	91.7	87.1	82.5	78.1	73.4
95°	96.8	104.1	111.2	118.4	125.6	132.8	125.0	117.4	109.7	102.0	94.3
97.5°	113.8	121.4	129.1	136.9	144.7	152.4	143.3	134.2	125.0	116.0	107.0
100°	160.4	175.4	190.3	205.2	220.2	235.1	218.2	201.2	184.3	167.2	150.3
102.5°	322.0	356.2	390.5	424.7	458.9	493.2	457.2	421.3	385.2	349.2	313.0
105°	600.5	655.4	710.2	765.0	819.8	874.9	816.4	757.9	699.5	641.2	582.6
107.5°	884.7	938.2	991.8	1045.2	1098.8	1152.4	1093.2	1033.8	974.6	915.3	856.0
110°	1048.2	1080.2	1112.5	1144.8	1176.9	1209.3	1166.0	1122.8	1079.5	1036.2	993.0



TEST NUMBER: P1444822
 CATALOG NUMBER: EHBR1-36-UNV-TA-L940-UPL30

CANDELA DISTRIBUTION (continued):

	302.5°	305°	307.5°	310°	312.5°	315°	317.5°	320°	322.5°	325°	327.5°
112.5°	1079.8	1096.0	1112.1	1128.4	1144.5	1160.7	1129.8	1099.1	1068.0	1037.3	1006.2
115°	1013.7	1018.9	1024.3	1029.5	1034.6	1039.9	1019.1	998.3	977.6	956.7	935.7
117.5°	892.0	891.3	890.3	889.7	888.8	888.0	876.5	864.8	853.2	841.6	829.9
120°	768.5	764.5	760.3	756.1	751.9	747.6	742.8	738.0	733.0	728.2	723.1
122.5°	661.5	658.8	655.8	653.1	650.0	647.1	645.4	643.6	641.6	639.8	637.8
125°	577.2	577.2	577.1	577.2	577.0	577.1	576.1	575.3	574.4	573.5	572.5
127.5°	519.7	521.8	523.7	525.7	527.6	529.5	529.4	529.3	529.1	528.9	528.7
130°	484.3	488.0	491.3	494.6	497.9	501.3	500.8	500.4	499.9	499.5	499.0
132.5°	463.4	467.3	471.2	475.2	479.0	482.9	482.2	481.8	480.9	480.4	479.8
135°	449.4	453.3	456.9	460.7	464.1	467.8	466.9	466.3	465.4	464.7	463.9
137.5°	439.8	443.0	445.9	448.9	451.6	454.5	453.6	453.0	451.9	451.4	450.5
140°	432.8	435.2	437.4	439.8	442.1	444.4	443.3	442.3	441.2	440.2	439.0
142.5°	427.3	429.2	430.8	432.7	434.3	436.1	434.3	432.9	431.4	430.0	428.5
145°	424.7	425.9	427.1	428.3	429.0	430.3	428.6	426.9	424.9	423.2	421.5
147.5°	420.0	420.7	421.2	422.0	422.4	423.2	421.5	419.8	418.1	416.3	414.6
150°	414.2	415.0	415.5	416.1	416.6	417.3	415.4	413.7	411.7	410.0	408.2
152.5°	406.8	407.2	407.8	408.2	408.8	409.3	407.4	406.0	404.1	402.3	400.6
155°	401.5	402.0	402.3	402.7	402.8	403.1	401.5	400.2	398.7	397.3	395.8
157.5°	398.3	398.7	399.0	399.3	399.5	399.8	398.7	397.7	396.4	395.4	394.2
160°	396.5	396.8	397.2	397.3	397.6	397.8	396.9	396.1	395.1	394.1	393.1
162.5°	396.7	397.2	397.6	398.0	398.5	398.9	397.8	396.8	395.7	394.6	393.2
165°	396.8	397.2	397.4	397.8	397.9	398.2	397.4	396.8	395.9	395.2	394.4
167.5°	399.0	399.4	399.7	400.0	400.0	400.2	399.6	398.9	398.1	397.3	396.4
170°	399.9	400.2	400.7	401.1	401.4	401.7	401.2	400.6	399.9	399.3	398.6
172.5°	402.5	402.8	402.9	403.4	403.6	404.0	403.3	402.7	402.0	401.4	400.6
175°	401.8	402.0	402.2	402.2	402.2	402.3	401.7	401.3	400.7	400.1	399.7
177.5°	403.1	403.1	403.1	403.0	403.0	403.0	402.7	402.3	402.0	401.6	401.2
180°	401.2	401.2	401.2	401.2	401.2	401.2	401.2	401.2	401.2	401.2	401.2



TEST NUMBER: P1444822
 CATALOG NUMBER: EHBR1-36-UNV-TA-L940-UPL30

CANDELA DISTRIBUTION (continued):

	330°	332.5°	335°	337.5°	340°	342.5°	345°	347.5°	350°	352.5°	355°
0°	28971.7	28971.7	28971.7	28971.7	28971.7	28971.7	28971.7	28971.7	28971.7	28971.7	28971.7
2.5°	29153.6	29140.9	29132.7	29122.4	29116.1	29108.0	29102.1	29097.1	29093.0	29089.2	29086.4
5°	29563.5	29498.4	29447.8	29393.0	29348.0	29303.2	29268.6	29240.0	29220.2	29205.4	29196.6
7.5°	30085.5	29966.2	29860.2	29748.5	29648.4	29549.9	29465.1	29392.0	29337.1	29301.6	29280.0
10°	30551.6	30392.0	30234.0	30067.7	29910.2	29757.2	29616.2	29492.1	29393.8	29328.5	29290.4
12.5°	30760.5	30624.5	30463.2	30282.8	30089.5	29894.2	29703.7	29531.9	29387.7	29290.9	29235.1
15°	30576.5	30520.7	30411.2	30271.1	30087.9	29885.8	29662.1	29451.9	29258.5	29133.1	29060.4
17.5°	29977.9	30055.9	30047.5	29994.0	29862.1	29692.1	29464.1	29228.1	28986.1	28818.5	28726.9
20°	28967.7	29212.8	29337.1	29400.9	29349.2	29238.9	29032.5	28792.9	28510.9	28292.0	28158.5
22.5°	27548.2	27980.8	28250.4	28447.6	28489.5	28451.9	28269.8	28041.8	27727.5	27464.4	27267.2
25°	25720.7	26354.6	26780.6	27114.6	27244.3	27277.8	27122.8	26896.1	26545.7	26239.3	25968.4
27.5°	23568.2	24391.8	24960.6	25409.4	25612.1	25699.9	25557.2	25325.9	24911.5	24545.6	24191.8
30°	21144.9	22122.0	22807.0	23345.1	23592.1	23708.1	23556.5	23298.4	22816.1	22375.9	21930.0
32.5°	18551.2	19620.5	20366.8	20951.2	21196.0	21305.2	21106.8	20816.9	20259.5	19740.8	19221.0
35°	15835.7	16914.9	17667.5	18236.4	18441.6	18507.3	18253.7	17918.6	17301.0	16731.8	16164.9
37.5°	13064.8	14068.9	14753.0	15263.5	15390.4	15401.8	15096.2	14726.1	14077.0	13515.7	12951.4
40°	10318.0	11164.7	11717.0	12125.6	12169.7	12130.4	11798.2	11425.7	10818.4	10315.6	9820.2
42.5°	7730.5	8369.6	8763.7	9043.8	9027.1	8949.5	8644.8	8324.7	7823.7	7440.7	7050.8
45°	5513.8	5935.2	6165.6	6329.5	6276.9	6202.9	5965.8	5741.5	5400.9	5153.6	4891.6
47.5°	3830.5	4333.7	4246.2	4566.6	4290.5	4472.8	4093.2	3883.8	3703.2	3571.7	3423.7
50°	2742.3	2857.6	2913.3	2951.4	2931.1	2903.1	2834.9	2774.0	2691.4	2631.2	2561.2
52.5°	2117.8	2175.5	2207.1	2229.9	2225.4	2215.2	2185.5	2158.3	2119.7	2094.2	2063.5
55°	1793.9	1794.7	1852.9	1827.9	1864.7	1821.6	1838.5	1790.7	1798.4	1757.5	1729.9
57.5°	1490.6	1514.3	1524.9	1535.2	1532.3	1530.5	1519.0	1513.2	1500.2	1496.2	1487.0
60°	1311.2	1323.6	1326.2	1330.9	1326.9	1325.4	1316.4	1313.2	1304.5	1302.8	1296.8
62.5°	1188.2	1194.6	1194.6	1194.6	1189.3	1184.4	1174.4	1169.2	1161.8	1160.2	1156.6
65°	1085.6	1092.1	1093.2	1094.6	1090.8	1087.0	1078.1	1072.4	1064.8	1061.9	1057.8
67.5°	979.5	986.5	988.9	992.5	990.3	989.5	983.5	981.3	976.3	975.1	971.3
70°	896.3	899.2	899.0	898.9	894.2	890.0	883.0	879.7	874.4	873.3	870.0
72.5°	846.9	848.9	847.6	845.7	839.7	833.5	825.3	819.3	812.4	808.1	803.3
75°	777.2	779.9	778.1	777.0	771.5	767.4	760.9	757.5	752.7	751.3	747.9
77.5°	691.6	692.9	690.1	689.8	685.6	683.0	678.1	677.2	673.7	673.8	670.5
80°	596.3	595.6	591.1	590.2	586.0	585.0	581.1	581.3	578.6	579.7	577.4
82.5°	490.7	488.0	482.1	480.4	475.5	475.1	472.5	474.7	473.0	475.5	474.0
85°	351.6	352.4	349.8	349.8	348.4	348.8	348.6	350.2	350.5	352.8	352.7
87.5°	196.0	198.8	198.3	200.9	200.8	203.7	204.7	209.0	209.5	213.4	213.4
90°	91.8	94.3	91.5	94.3	93.1	96.8	96.4	100.2	99.1	102.2	100.3
92.5°	68.8	64.3	59.8	55.2	52.9	50.3	48.5	45.7	43.8	41.2	38.9
95°	86.5	78.9	71.2	63.4	60.8	58.1	55.4	52.8	50.2	47.6	44.9
97.5°	97.8	88.7	79.6	70.4	68.1	65.9	63.4	61.2	58.9	56.6	54.3
100°	133.2	116.2	99.3	82.2	80.2	78.4	76.4	74.4	72.6	70.5	68.6
102.5°	277.0	240.9	204.8	168.6	161.8	154.9	148.1	141.1	134.3	127.4	120.6
105°	524.1	465.5	407.0	348.4	329.8	311.3	292.6	274.0	255.4	236.8	218.2
107.5°	796.7	737.1	677.8	618.3	584.0	549.7	515.3	480.8	446.5	412.1	377.7
110°	949.7	906.3	862.9	819.4	791.9	764.1	736.5	708.7	681.2	653.3	625.6



TEST NUMBER: P1444822
 CATALOG NUMBER: EHBR1-36-UNV-TA-L940-UPL30

CANDELA DISTRIBUTION (continued):

	330°	332.5°	335°	337.5°	340°	342.5°	345°	347.5°	350°	352.5°	355°
112.5°	975.2	944.2	913.2	882.0	869.5	856.9	844.4	831.9	819.4	806.6	794.1
115°	914.8	894.0	873.0	851.8	847.6	843.1	838.8	834.2	829.8	825.3	820.7
117.5°	818.3	806.4	794.7	782.9	783.7	784.4	785.2	785.7	786.5	787.0	787.6
120°	718.1	713.2	708.1	703.1	707.0	710.8	714.7	718.2	722.0	725.5	729.1
122.5°	635.9	633.9	632.0	630.0	634.7	639.3	644.0	648.4	652.8	657.0	661.5
125°	571.7	570.6	569.7	568.6	573.4	578.0	582.7	587.0	591.7	595.9	600.2
127.5°	528.5	528.3	528.1	527.9	531.4	534.6	537.9	541.0	544.2	547.0	550.0
130°	498.5	498.0	497.6	497.0	500.1	503.1	506.2	508.9	511.8	514.2	516.7
132.5°	479.2	478.5	478.0	477.2	479.6	481.7	483.9	485.7	487.6	489.2	490.9
135°	463.1	462.2	461.4	460.5	462.7	464.7	466.7	468.3	470.3	471.7	473.2
137.5°	449.7	448.8	447.9	447.0	449.0	450.7	452.5	454.1	455.6	457.1	458.4
140°	438.1	436.9	436.0	434.8	436.5	438.1	439.7	441.0	442.5	443.6	444.8
142.5°	427.0	425.2	424.1	422.3	423.6	424.7	425.9	426.9	427.9	428.7	429.4
145°	419.7	417.7	416.1	414.3	415.2	416.1	417.0	417.9	418.5	419.1	419.7
147.5°	412.9	411.0	409.3	407.5	408.3	409.0	409.5	409.9	410.7	411.0	411.3
150°	406.4	404.3	402.5	400.5	401.2	401.6	402.0	402.6	403.1	403.3	403.6
152.5°	398.8	397.0	395.2	393.2	393.7	394.1	394.4	394.6	395.0	395.3	395.5
155°	394.3	392.7	391.1	389.4	389.9	390.2	390.3	390.5	390.7	390.9	390.9
157.5°	393.0	391.5	390.5	389.1	389.1	389.2	389.2	389.1	389.1	388.9	388.8
160°	392.1	390.9	389.9	388.8	388.8	388.8	388.8	388.6	388.4	388.2	388.0
162.5°	392.0	390.8	389.5	388.2	388.2	388.3	388.2	388.0	387.8	387.7	387.5
165°	393.5	392.6	391.7	390.6	390.5	390.3	390.2	389.7	389.5	389.1	388.8
167.5°	395.5	394.6	393.6	392.6	392.7	392.7	392.7	392.6	392.4	392.2	392.1
170°	397.9	397.1	396.4	395.6	395.4	395.3	395.0	394.8	394.5	394.3	394.0
172.5°	399.9	399.1	398.4	397.4	397.4	397.3	397.1	397.0	396.7	396.4	396.3
175°	399.0	398.5	397.8	397.3	397.1	397.0	396.9	396.8	396.6	396.5	396.2
177.5°	400.8	400.5	400.0	399.6	399.4	399.4	399.3	399.2	399.2	399.1	399.0
180°	401.2	401.2	401.2	401.2	401.2	401.2	401.2	401.2	401.2	401.2	401.2



TEST NUMBER: P1444822
CATALOG NUMBER: EHBR1-36-UNV-TA-L940-UPL30

CANDELA DISTRIBUTION (continued):

	357.5°	360°
0°	28971.7	28971.7
2.5°	29083.8	29082.3
5°	29192.0	29190.2
7.5°	29274.2	29273.7
10°	29283.9	29288.9
12.5°	29225.4	29229.5
15°	29054.9	29062.8
17.5°	28728.6	28739.0
20°	28166.6	28177.5
22.5°	27256.6	27261.1
25°	25933.4	25914.7
27.5°	24129.5	24097.2
30°	21836.4	21805.2
32.5°	19102.4	19082.8
35°	16024.8	16012.5
37.5°	12784.6	12759.4
40°	9639.0	9565.8
42.5°	6880.1	6751.5
45°	4754.7	4602.4
47.5°	3319.3	3225.2
50°	2515.9	2485.5
52.5°	2050.1	2043.0
55°	1729.8	1726.6
57.5°	1489.0	1487.9
60°	1299.9	1299.6
62.5°	1159.0	1159.5
65°	1059.7	1059.8
67.5°	972.3	971.6
70°	871.2	870.4
72.5°	801.7	800.5
75°	747.9	747.2
77.5°	671.5	670.3
80°	578.9	577.4
82.5°	476.2	474.5
85°	355.1	355.3
87.5°	217.4	217.3
90°	103.3	100.9
92.5°	36.9	34.8
95°	42.3	39.7
97.5°	52.1	49.7
100°	66.7	64.7
102.5°	113.8	107.0
105°	199.7	181.0
107.5°	343.3	308.9
110°	597.8	570.2



TEST NUMBER: P1444822
CATALOG NUMBER: EHBR1-36-UNV-TA-L940-UPL30

CANDELA DISTRIBUTION (continued):

	357.5°	360°
112.5°	781.4	768.7
115°	815.9	811.4
117.5°	788.0	788.4
120°	732.4	735.9
122.5°	665.4	669.5
125°	604.1	608.2
127.5°	552.6	555.2
130°	518.8	521.2
132.5°	492.3	493.5
135°	474.3	475.4
137.5°	459.2	460.2
140°	445.4	446.3
142.5°	430.0	430.5
145°	420.1	420.5
147.5°	411.2	411.5
150°	403.7	403.9
152.5°	395.4	395.6
155°	390.9	390.9
157.5°	388.4	388.3
160°	387.8	387.6
162.5°	387.2	387.0
165°	388.2	387.8
167.5°	391.9	391.8
170°	393.6	393.4
172.5°	396.0	395.8
175°	396.1	396.0
177.5°	399.0	398.8
180°	401.2	401.2

LM-79-2019: Approved Method: Electrical and Photometric Measurements of Solid-
State Lighting Products

Report Prepared for

Cooper Lighting Solutions

Metalux

Report Number: SP1-2506-472-7

Test Date: 08/04/2025

Luminaire Tested: EHBR-60-L940-N

Data in this report applies to families of products including EHBR-60-L940-N

Test Information

Test Method: LM-79-2019
 Report Number: SP1-2506-472-7
 Test Lab: COOPER LIGHTING SOLUTIONS
 Photometer: SP1 - 76IN SPHERE
 Measurement Geometry: 4π
 Issue Date: 08/05/2025
 Manufacturer: COOPER LIGHTING SOLUTIONS
 Product Line: Metalux
 Catalog Number: **EHBR-60-L940-N**
 Description: Elevate Round Highbay at, 60000 lumens, 4000K 90CRI LEDs with N lens

Spectral Parameters

CCT (K): 3963
 CIE u': 0.2267
 CIE v': 0.5003
 Duv: -0.0016
 CIE x: 0.3810
 CIE y: 0.3738
 CIE z: 0.2453
 Peak Wavelength (nm): 630
 Dominant Wavelength (nm): 580
 Purity: 26.49712
 Rf: 90.7
 Rg: 101

CRI (Ra):	93.4		
R1:	95.2	R9:	66.4
R2:	95.1	R10:	86.6
R3:	93.3	R11:	94.4
R4:	94.5	R12:	75.4
R5:	94.2	R13:	95.0
R6:	92.9	R14:	95.4
R7:	94.0	R15:	92.8
R8:	87.7		



Test Conditions

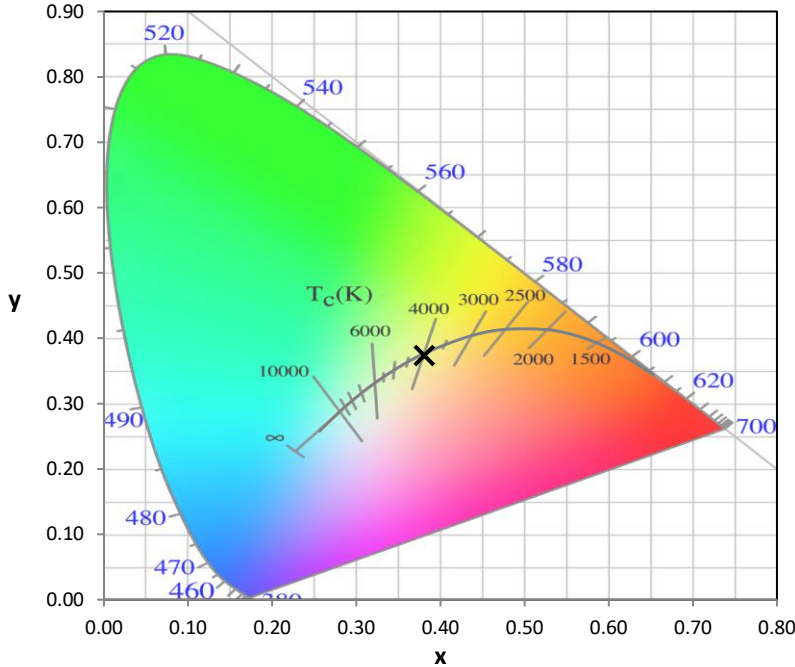
Stabilization Time: 44M
 Operation Time: 1H 44M
 Sphere Temperature (°C): 25.0

REPORT NUMBER: SP1-2506-472-7

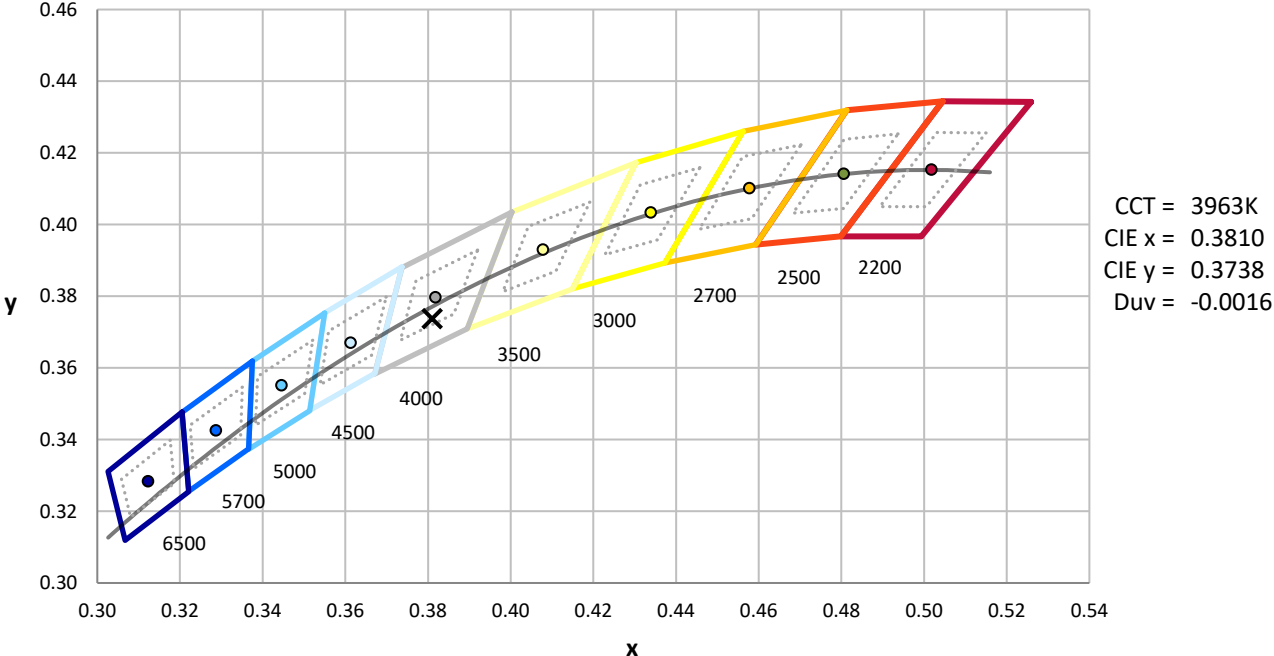
Measurement and Test Equipment			
Instrument	Identification Number	Calibration Date	Calibration Due Date
Photometer	76INCH SPHERE IN0058	6/16/2025	12/16/2025
Power Meter	XITRON INXT2011004	1/21/2025	1/21/2026
AC Power Source	CHROMA 61603 IN0063	10/22/2024	10/22/2025
DC Power Source	AGILENT E3634A IN0208	10/22/2024	10/22/2025
Sphere Thermometer	ONSET IN0085	10/22/2024	10/22/2025
Room Thermometer	ONSET IN0046	10/22/2024	10/22/2025

REPORT NUMBER: SP1-2506-472-7

CIE 1931 Chromaticity Diagram



CIE 1931 Chromaticity Diagram with 2017 ANSI 7-Step and 4-Step Quadrangles



Point lies inside the ANSI 4000K 4-step quadrangle

REPORT NUMBER: SP1-2506-472-7

Photopic Flux vs. Wavelength



Photopic Lumens: NR

λ (nm)	Power W [^] /nm	Lumens (φ/nm)	λ (nm)	Power W [^] /nm	Lumens (φ/nm)	λ (nm)	Power W [^] /nm	Lumens (φ/nm)	λ (nm)	Power W [^] /nm	Lumens (φ/nm)	λ (nm)	Power W [^] /nm	Lumens (φ/nm)
360	0	NR	490	141	NR	620	276	NR	750	5	NR	880	0	NR
365	0	NR	495	167	NR	625	279	NR	755	4	NR	885	0	NR
370	0	NR	500	193	NR	630	1000	NR	760	4	NR	890	0	NR
375	0	NR	505	215	NR	635	628	NR	765	3	NR	895	0	NR
380	0	NR	510	230	NR	640	164	NR	770	3	NR	900	0	NR
385	0	NR	515	243	NR	645	161	NR	775	2	NR	905	0	NR
390	1	NR	520	251	NR	650	137	NR	780	2	NR	910	0	NR
395	2	NR	525	256	NR	655	111	NR	785	2	NR	915	0	NR
400	3	NR	530	262	NR	660	92	NR	790	1	NR	920	0	NR
405	4	NR	535	267	NR	665	76	NR	795	1	NR	925	0	NR
410	6	NR	540	271	NR	670	71	NR	800	1	NR	930	0	NR
415	11	NR	545	276	NR	675	56	NR	805	1	NR	935	0	NR
420	20	NR	550	280	NR	680	47	NR	810	1	NR	940	0	NR
425	37	NR	555	285	NR	685	40	NR	815	1	NR	945	0	NR
430	63	NR	560	290	NR	690	34	NR	820	1	NR	950	0	NR
435	108	NR	565	294	NR	695	29	NR	825	1	NR	955	0	NR
440	186	NR	570	296	NR	700	25	NR	830	0	NR	960	0	NR
445	323	NR	575	298	NR	705	21	NR	835	0	NR	965	0	NR
450	403	NR	580	299	NR	710	18	NR	840	0	NR	970	0	NR
455	293	NR	585	298	NR	715	15	NR	845	0	NR	975	0	NR
460	214	NR	590	296	NR	720	13	NR	850	0	NR	980	0	NR
465	180	NR	595	288	NR	725	11	NR	855	0	NR	985	0	NR
470	132	NR	600	286	NR	730	9	NR	860	0	NR	990	0	NR
475	109	NR	605	282	NR	735	8	NR	865	0	NR	995	0	NR
480	110	NR	610	311	NR	740	7	NR	870	0	NR	1000	0	NR
485	121	NR	615	334	NR	745	6	NR	875	0	NR			

REPORT NUMBER: SP1-2506-472-7

Scotopic Flux vs. Wavelength



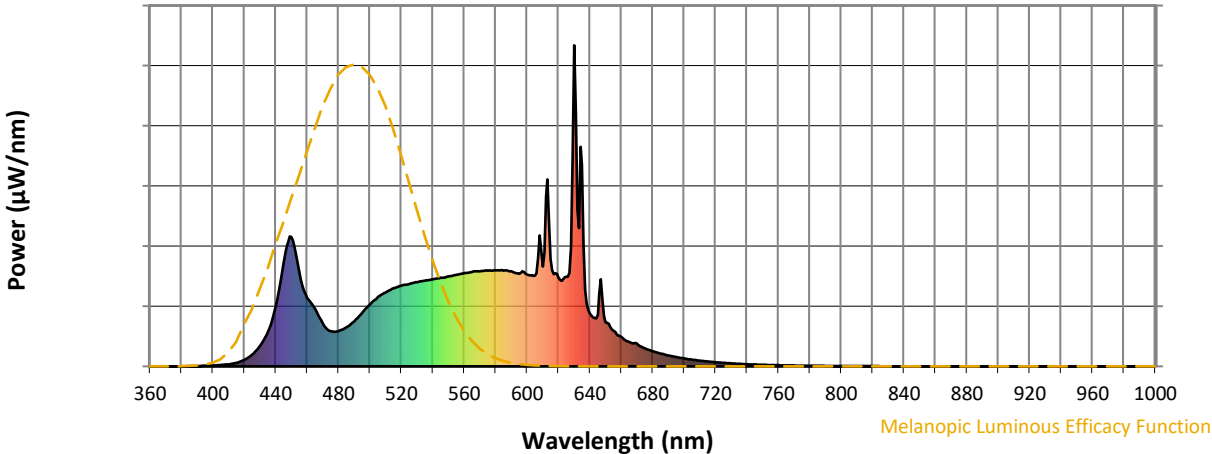
Scotopic Lumens: NR

S/P: 1.76

λ (nm)	Power W [^] /nm	Lumens (φ/nm)	λ (nm)	Power W [^] /nm	Lumens (φ/nm)	λ (nm)	Power W [^] /nm	Lumens (φ/nm)	λ (nm)	Power W [^] /nm	Lumens (φ/nm)	λ (nm)	Power W [^] /nm	Lumens (φ/nm)
360	0	NR	490	141	NR	620	276	NR	750	5	NR	880	0	NR
365	0	NR	495	167	NR	625	279	NR	755	4	NR	885	0	NR
370	0	NR	500	193	NR	630	1000	NR	760	4	NR	890	0	NR
375	0	NR	505	215	NR	635	628	NR	765	3	NR	895	0	NR
380	0	NR	510	230	NR	640	164	NR	770	3	NR	900	0	NR
385	0	NR	515	243	NR	645	161	NR	775	2	NR	905	0	NR
390	1	NR	520	251	NR	650	137	NR	780	2	NR	910	0	NR
395	2	NR	525	256	NR	655	111	NR	785	2	NR	915	0	NR
400	3	NR	530	262	NR	660	92	NR	790	1	NR	920	0	NR
405	4	NR	535	267	NR	665	76	NR	795	1	NR	925	0	NR
410	6	NR	540	271	NR	670	71	NR	800	1	NR	930	0	NR
415	11	NR	545	276	NR	675	56	NR	805	1	NR	935	0	NR
420	20	NR	550	280	NR	680	47	NR	810	1	NR	940	0	NR
425	37	NR	555	285	NR	685	40	NR	815	1	NR	945	0	NR
430	63	NR	560	290	NR	690	34	NR	820	1	NR	950	0	NR
435	108	NR	565	294	NR	695	29	NR	825	1	NR	955	0	NR
440	186	NR	570	296	NR	700	25	NR	830	0	NR	960	0	NR
445	323	NR	575	298	NR	705	21	NR	835	0	NR	965	0	NR
450	403	NR	580	299	NR	710	18	NR	840	0	NR	970	0	NR
455	293	NR	585	298	NR	715	15	NR	845	0	NR	975	0	NR
460	214	NR	590	296	NR	720	13	NR	850	0	NR	980	0	NR
465	180	NR	595	288	NR	725	11	NR	855	0	NR	985	0	NR
470	132	NR	600	286	NR	730	9	NR	860	0	NR	990	0	NR
475	109	NR	605	282	NR	735	8	NR	865	0	NR	995	0	NR
480	110	NR	610	311	NR	740	7	NR	870	0	NR	1000	0	NR
485	121	NR	615	334	NR	745	6	NR	875	0	NR			

REPORT NUMBER: SP1-2506-472-7

Melanopic Flux vs. Wavelength



Melanopic Lumens: NR

M/P: 3.64

λ (nm)	Power W [^] /nm	Lumens (φ/nm)	λ (nm)	Power W [^] /nm	Lumens (φ/nm)	λ (nm)	Power W [^] /nm	Lumens (φ/nm)	λ (nm)	Power W [^] /nm	Lumens (φ/nm)	λ (nm)	Power W [^] /nm	Lumens (φ/nm)
360	0	NR	490	141	NR	620	276	NR	750	5	NR	880	0	NR
365	0	NR	495	167	NR	625	279	NR	755	4	NR	885	0	NR
370	0	NR	500	193	NR	630	1000	NR	760	4	NR	890	0	NR
375	0	NR	505	215	NR	635	628	NR	765	3	NR	895	0	NR
380	0	NR	510	230	NR	640	164	NR	770	3	NR	900	0	NR
385	0	NR	515	243	NR	645	161	NR	775	2	NR	905	0	NR
390	1	NR	520	251	NR	650	137	NR	780	2	NR	910	0	NR
395	2	NR	525	256	NR	655	111	NR	785	2	NR	915	0	NR
400	3	NR	530	262	NR	660	92	NR	790	1	NR	920	0	NR
405	4	NR	535	267	NR	665	76	NR	795	1	NR	925	0	NR
410	6	NR	540	271	NR	670	71	NR	800	1	NR	930	0	NR
415	11	NR	545	276	NR	675	56	NR	805	1	NR	935	0	NR
420	20	NR	550	280	NR	680	47	NR	810	1	NR	940	0	NR
425	37	NR	555	285	NR	685	40	NR	815	1	NR	945	0	NR
430	63	NR	560	290	NR	690	34	NR	820	1	NR	950	0	NR
435	108	NR	565	294	NR	695	29	NR	825	1	NR	955	0	NR
440	186	NR	570	296	NR	700	25	NR	830	0	NR	960	0	NR
445	323	NR	575	298	NR	705	21	NR	835	0	NR	965	0	NR
450	403	NR	580	299	NR	710	18	NR	840	0	NR	970	0	NR
455	293	NR	585	298	NR	715	15	NR	845	0	NR	975	0	NR
460	214	NR	590	296	NR	720	13	NR	850	0	NR	980	0	NR
465	180	NR	595	288	NR	725	11	NR	855	0	NR	985	0	NR
470	132	NR	600	286	NR	730	9	NR	860	0	NR	990	0	NR
475	109	NR	605	282	NR	735	8	NR	865	0	NR	995	0	NR
480	110	NR	610	311	NR	740	7	NR	870	0	NR	1000	0	NR
485	121	NR	615	334	NR	745	6	NR	875	0	NR			

Summary

$R_f = 90.7$
 $R_g = 101$
 $CIE R_a = 93.4$
 $R_9 = 66.4$



Color Vector Graphics

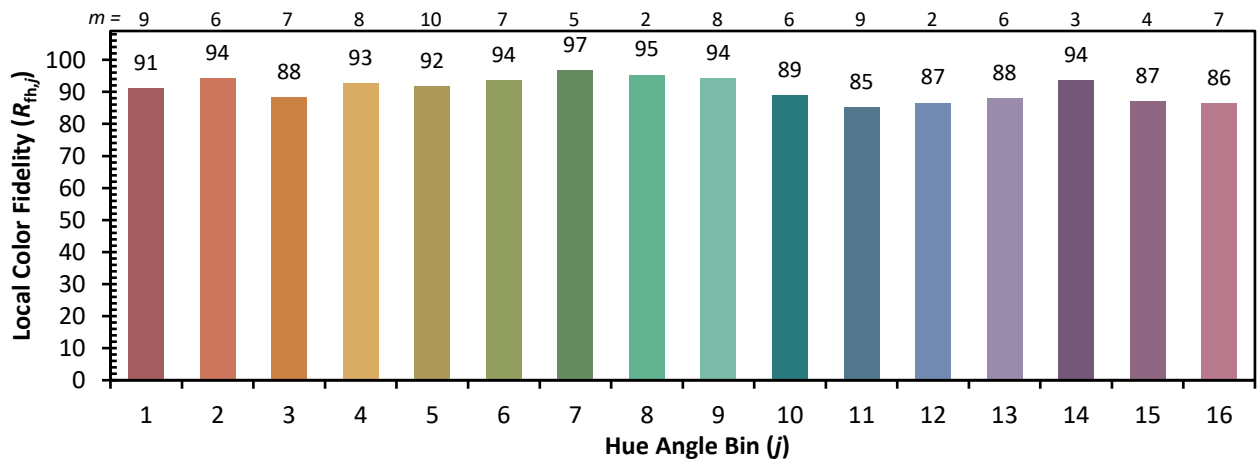
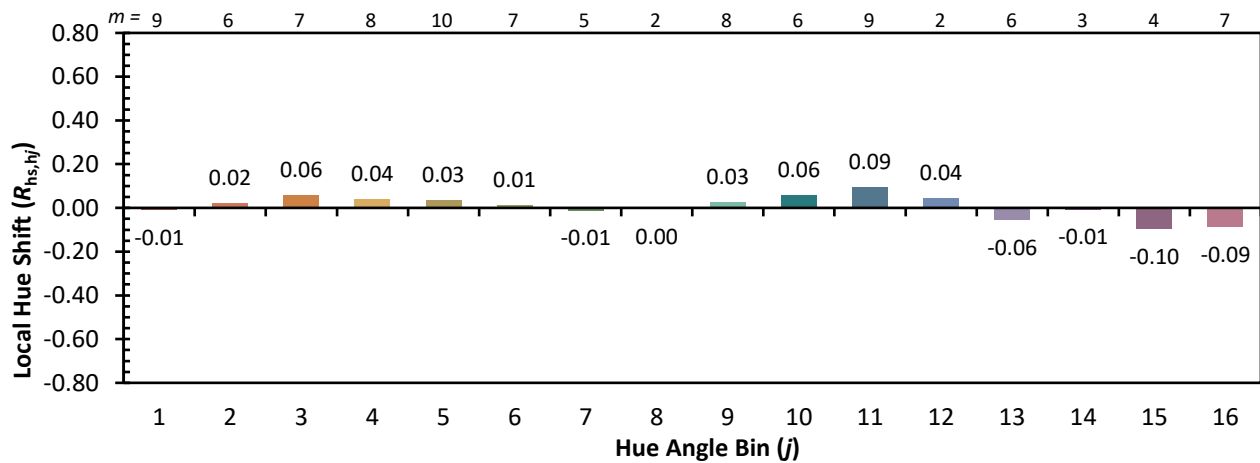
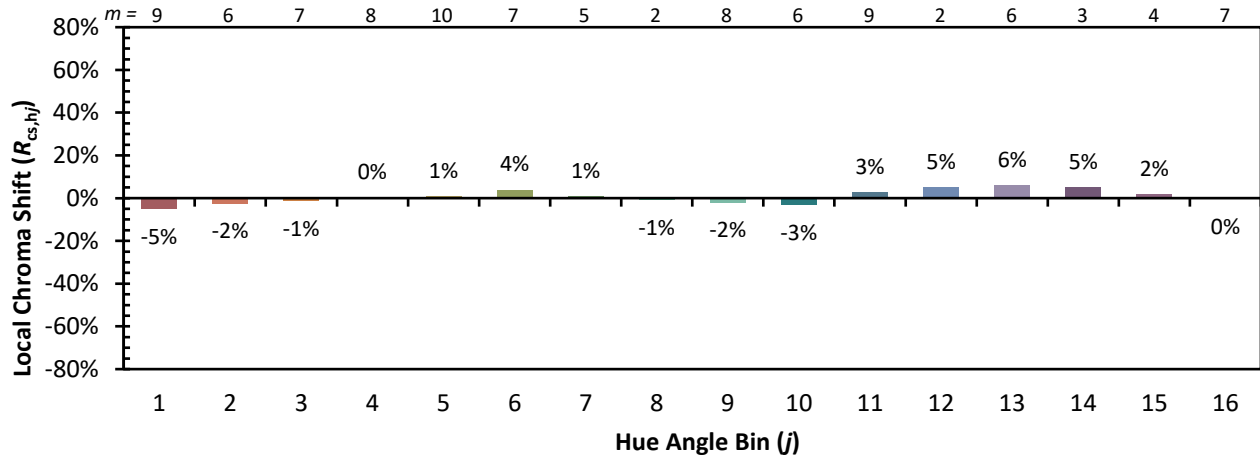


Individual Sample Fidelity Index ($R_{f,i}$)

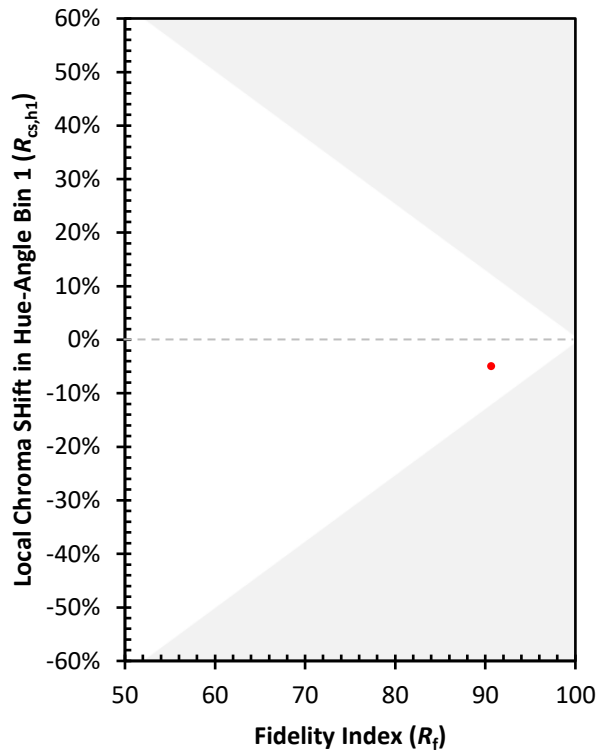
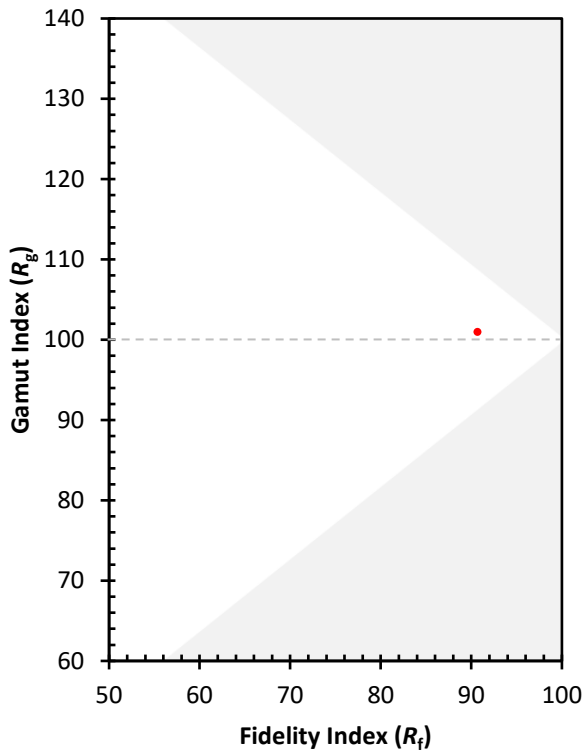
CES01 = 86	CES26 = 90	CES51 = 99	CES76 = 83
CES02 = 62	CES27 = 93	CES52 = 97	CES77 = 87
CES03 = 31	CES28 = 94	CES53 = 95	CES78 = 79
CES04 = 69	CES29 = 91	CES54 = 96	CES79 = 94
CES05 = 49	CES30 = 98	CES55 = 95	CES80 = 91
CES06 = 50	CES31 = 92	CES56 = 95	CES81 = 80
CES07 = 42	CES32 = 84	CES57 = 94	CES82 = 96
CES08 = 41	CES33 = 95	CES58 = 95	CES83 = 95
CES09 = 29	CES34 = 90	CES59 = 98	CES84 = 93
CES10 = 74	CES35 = 94	CES60 = 93	CES85 = 82
CES11 = 57	CES36 = 84	CES61 = 93	CES86 = 84
CES12 = 63	CES37 = 92	CES62 = 90	CES87 = 90
CES13 = 43	CES38 = 93	CES63 = 92	CES88 = 97
CES14 = 74	CES39 = 98	CES64 = 91	CES89 = 84
CES15 = 71	CES40 = 96	CES65 = 88	CES90 = 99
CES16 = 47	CES41 = 98	CES66 = 88	CES91 = 74
CES17 = 49	CES42 = 89	CES67 = 87	CES92 = 78
CES18 = 56	CES43 = 89	CES68 = 87	CES93 = 87
CES19 = 71	CES44 = 99	CES69 = 88	CES94 = 75
CES20 = 66	CES45 = 93	CES70 = 84	CES95 = 83
CES21 = 85	CES46 = 95	CES71 = 80	CES96 = 91
CES22 = 78	CES47 = 92	CES72 = 93	CES97 = 93
CES23 = 91	CES48 = 96	CES73 = 78	CES98 = 93
CES24 = 90	CES49 = 93	CES74 = 92	CES99 = 94
CES25 = 71	CES50 = 99	CES75 = 81	



Color Rendition by Hue-Angle Bin



Measure Comparisons



(END OF REPORT)