

Cooper Lighting Solutions Photometric Lab
1121 Highway 74 South
Peachtree City, GA 30269



Scaled data based on original data using
LM-79-2019 Approved Method: Electrical and Photometric Measurements of Solid-
State Lighting Products

Test Report Prepared for
Cooper Lighting Solutions

Brand: METALUX

Report Number: P1444838

Luminaire Tested: EHBR1-48-UNV-TA-L940-UPL30

Issue Date: 5/1/2026

Test Information

Test Method: LM-79-2019
Report Number: P1444838
REPORT IS A COMBINATION OF REPORTS P1444342 AND P1431635
Test Lab: INNOVATION CENTER
Issue Date: 5/1/2026
Manufacturer: COOPER LIGHTING SOLUTIONS
Product Line: METALUX
Catalog Number: EHBR1-48-UNV-TA-L940-UPL30
Description: Elevate Round Highbay at, 48000 lumens, 4000K 90CRI LEDs with TA lens
Light Source: -
Ballast/Driver: -

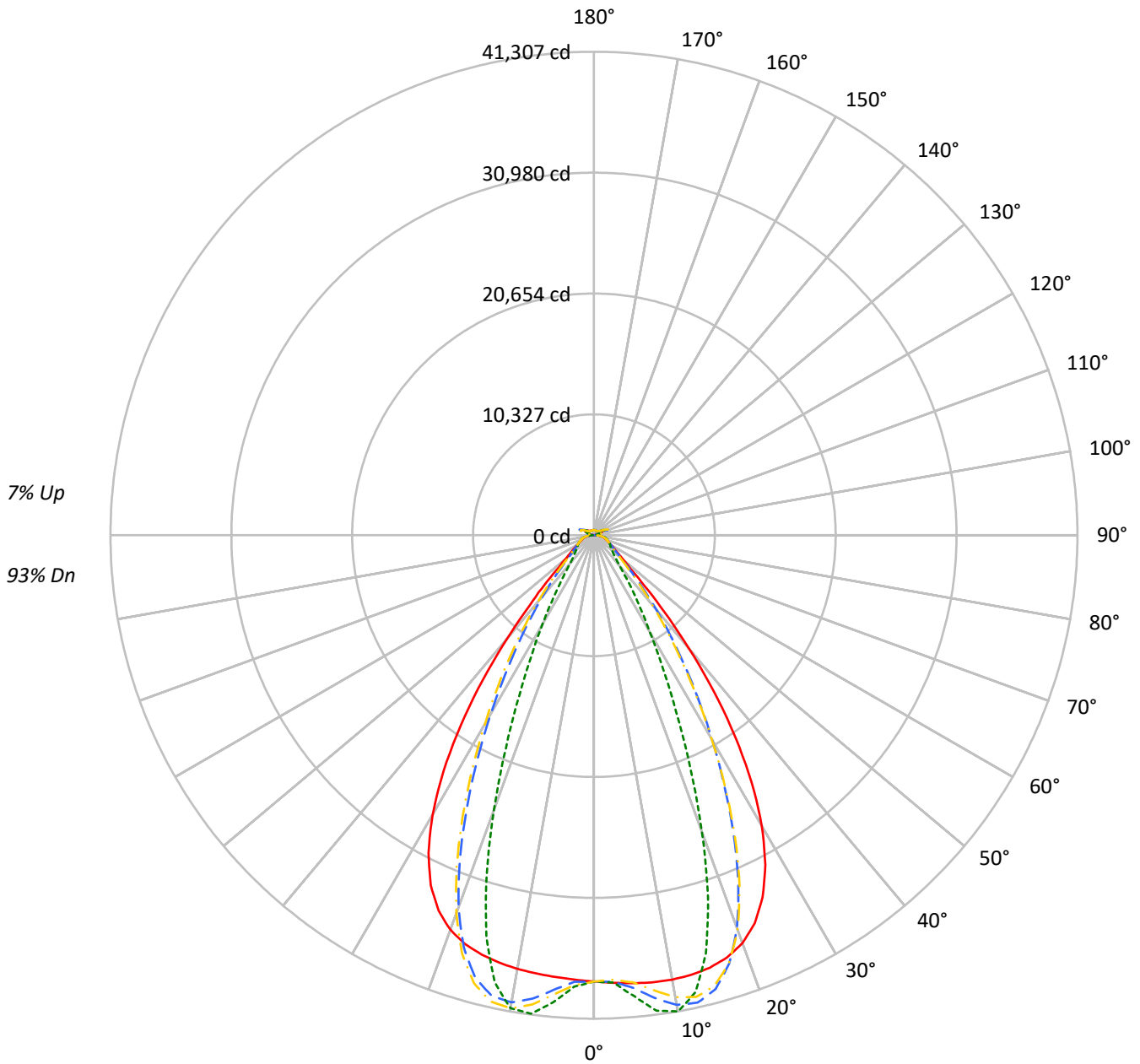
Summary

Lumens per Lamp: N/A
Luminaire Lumens: 46986.6 lumens
Efficiency: N/A
Efficacy: 167.5 lumens/watt
Spacing Criteria (0/90/45): 1.13 / 0.77 / 0.88
Luminous Opening: Vertical Cylinder (Dia: 1.71' x H: 0.1')
CIE Type: Direct

Input Watts (W): 280.6
Input Voltage (V): NR
Input Current (Ain): NR
Voltage Rise (V): NR
Power Factor: NR
Total Harmonic Distortion (THDi): NR
Frequency (hertz): 60
Stabilization Time: NR
Operation Time: NR
Ambient Temperature (°C): NR
Test Distance: 24 FT

TEST NUMBER: P1444838
CATALOG NUMBER: EHBR1-48-UNV-TA-L940-UPL30

Luminous Intensity Polar Plot



— 0°-180° - - 45°-225° - · - · 90°-270° - · - · 135°-315°



TEST NUMBER: P1444838
 CATALOG NUMBER: EHBR1-48-UNV-TA-L940-UPL30

COEFFICIENT OF UTILIZATION - ZONAL CAVITY METHOD:

RF	20				20				20				20				20				
RC	80				70				50				30				10			0	
RW	70	50	30	10	70	50	30	10	50	30	10	50	30	10	50	30	10	50	30	10	0
RCR																					
0	117	117	117	117	114	114	114	114	107	107	107	101	101	101	96	96	96	96	96	96	93
1	110	107	104	101	107	104	101	99	99	97	94	94	92	90	89	88	87	87	87	87	84
2	104	98	93	89	101	95	91	87	91	87	84	87	84	81	83	81	79	79	79	79	77
3	97	90	84	79	95	88	82	78	84	79	76	81	77	74	77	74	72	72	72	72	70
4	91	83	76	71	89	81	75	70	78	73	69	75	71	67	72	69	66	66	66	66	64
5	86	76	70	65	84	75	69	64	72	67	63	70	65	62	68	64	61	61	61	61	59
6	81	71	64	59	79	70	64	59	68	62	58	66	61	57	64	59	56	56	56	56	54
7	77	66	60	55	75	65	59	54	63	58	54	61	57	53	60	55	52	52	52	52	50
8	73	62	55	51	71	61	55	50	59	54	50	58	53	49	56	52	49	49	49	49	47
9	69	58	52	47	67	57	51	47	56	50	46	54	50	46	53	49	45	45	45	45	44
10	65	55	48	44	64	54	48	44	53	47	43	51	47	43	50	46	43	43	43	43	41

AVERAGE LUMINANCE (cd/sqm):

	0°	90°	180°	270°
0°	179062	179062	179062	179062
5°	179929	185175	177411	187601
10°	181431	194420	177080	193134
15°	182321	176240	176770	169144
20°	180436	131293	174531	121477
25°	170789	83035	165145	75339
30°	149197	49898	143419	45602
35°	114823	31311	108218	27736
40°	72636	19641	66456	18456
45°	37438	15301	36817	15049
50°	21950	13610	21276	13398
55°	16816	12876	16194	12761
60°	14229	13154	13622	12983
65°	13365	13737	12852	13268
70°	13056	14384	12405	13842
75°	13960	15255	13205	14579
80°	14445	16891	13097	15420
85°	13605	16299	10995	13954

MAXIMUM LUMINANCE 45°-90°:

Horizontal Angle: 25°
 Vertical Angle: 45°
 Luminance: 57294 cd/sqm



TEST NUMBER: P1444838
 CATALOG NUMBER: EHBR1-48-UNV-TA-L940-UPL30

ZONAL LUMENS:

Zone	Lumens	% Fixture
0°-10°	3757.8	8.0
10°-20°	10571.0	22.5
20°-30°	12039.6	25.6
30°-40°	8653.5	18.4
40°-50°	3991.0	8.5
50°-60°	1909.9	4.1
60°-70°	1393.5	3.0
70°-80°	1058.7	2.3
80°-90°	486.6	1.0
90°-100°	90.4	0.2
100°-110°	506.6	1.1
110°-120°	935.6	2.0
120°-130°	575.8	1.2
130°-140°	374.6	0.8
140°-150°	281.4	0.6
150°-160°	198.4	0.4
160°-170°	120.8	0.3
170°-180°	41.6	0.1
0°-30°	26368.4	56.1
0°-40°	35022.0	74.5
0°-60°	40922.8	87.1
0°-90°	43861.6	93.3
90°-120°	1532.6	3.3
90°-150°	2764.4	5.9
90°-180°	3125.0	6.7
0°-180°	46986.6	100.0

CANDELA DISTRIBUTION:

	0°	90°	180°	270°	360°	Flux
0°	38130	38130	38130	38130	38130	
5°	38418	39538	37880	40056	38418	3671
15°	38250	36974	37086	35486	38250	10777
25°	34106	16582	32979	15045	34106	15461
35°	21074	5747	19862	5090	21074	12934
45°	6057	2476	5957	2435	6057	5152
55°	2272	1740	2188	1724	2272	2098
65°	1395	1434	1342	1385	1395	1393
75°	983	1075	930	1027	983	1023
85°	468	560	378	480	468	439
90°	126	160	36	44	126	79
95°	41	46	41	46	41	39
105°	184	236	124	236	184	243
115°	817	988	856	989	817	755
125°	620	645	701	646	620	564
135°	494	434	532	438	494	385
145°	445	427	473	433	445	281
155°	420	419	446	424	420	195
165°	422	420	437	423	422	120
175°	433	437	441	438	433	41
180°	439	439	439	439	439	



TEST NUMBER: P1444838
 CATALOG NUMBER: EHBR1-48-UNV-TA-L940-UPL30

CANDELA DISTRIBUTION (FULL):

	0°	2.5°	5°	7.5°	10°	12.5°	15°	17.5°	20°	22.5°	25°
0°	38129.9	38129.9	38129.9	38129.9	38129.9	38129.9	38129.9	38129.9	38129.9	38129.9	38129.9
2.5°	38275.6	38272.5	38271.9	38269.3	38268.6	38268.6	38267.2	38264.2	38262.2	38257.8	38252.9
5°	38417.6	38415.9	38417.0	38417.2	38414.5	38408.6	38399.3	38387.8	38373.4	38359.9	38347.6
7.5°	38527.5	38530.2	38533.5	38532.8	38524.5	38510.5	38491.4	38480.7	38487.0	38507.8	38555.3
10°	38547.5	38563.9	38570.2	38568.3	38551.6	38539.6	38544.2	38584.7	38665.1	38772.3	38919.0
12.5°	38469.3	38489.4	38488.7	38482.1	38466.0	38482.4	38540.9	38661.1	38833.5	39045.1	39293.2
15°	38249.9	38275.9	38268.6	38259.9	38249.2	38303.0	38419.9	38628.7	38895.0	39193.3	39498.7
17.5°	37823.8	37855.2	37839.9	37830.2	37821.2	37922.1	38122.8	38428.6	38764.0	39101.4	39390.9
20°	37084.8	37105.9	37069.5	37052.4	37066.8	37264.5	37560.3	37950.9	38304.3	38623.4	38821.2
22.5°	35878.6	35904.8	35836.5	35828.6	35912.9	36216.5	36590.8	37027.4	37359.5	37612.4	37688.6
25°	34106.5	34132.3	34051.2	34099.6	34242.9	34656.6	35102.3	35569.3	35852.6	36040.1	35988.3
27.5°	31714.7	31738.2	31661.2	31760.2	31986.7	32530.2	33054.8	33561.4	33813.9	33945.2	33778.9
30°	28698.0	28746.8	28655.9	28794.0	29139.8	29845.4	30446.4	31014.5	31266.3	31366.2	31107.3
32.5°	25115.2	25184.5	25084.4	25289.8	25772.3	26619.9	27302.6	27937.3	28215.9	28329.9	28037.6
35°	21074.2	21173.6	21058.7	21367.1	21962.1	22906.0	23662.0	24370.7	24700.5	24862.3	24567.6
37.5°	16792.9	16887.8	16825.5	17236.9	17890.4	18868.7	19640.4	20404.9	20777.4	21020.1	20787.7
40°	12589.7	12676.4	12723.5	13194.0	13808.5	14730.6	15471.7	16228.2	16645.0	16949.5	16806.2
42.5°	8885.8	8973.3	9133.3	9587.2	10099.7	10863.0	11497.9	12177.1	12575.1	12900.0	12844.8
45°	6057.3	6158.9	6359.2	6731.0	7101.6	7649.2	8115.4	8643.6	8968.8	9266.4	9269.9
47.5°	4244.7	4316.0	4495.1	4748.9	4990.5	5676.1	5704.2	5963.7	6182.3	6404.8	6433.6
50°	3271.3	3314.2	3409.2	3550.7	3687.5	3865.5	4028.4	4216.5	4351.1	4473.0	4502.1
52.5°	2688.8	2716.0	2764.4	2841.0	2920.4	3017.2	3104.4	3207.7	3280.9	3346.2	3359.9
55°	2272.5	2295.1	2367.0	2381.6	2472.4	2489.9	2528.7	2591.6	2634.1	2673.3	2683.0
57.5°	1958.3	1974.7	1990.0	2022.6	2050.6	2091.3	2124.1	2169.2	2196.0	2224.3	2226.7
60°	1710.5	1722.3	1733.2	1755.9	1774.9	1803.2	1825.7	1856.4	1875.7	1896.8	1899.3
62.5°	1526.0	1534.5	1541.8	1556.7	1570.3	1592.1	1610.0	1635.6	1653.5	1669.9	1673.6
65°	1395.0	1401.1	1405.8	1417.1	1429.0	1447.5	1463.7	1484.7	1497.8	1510.4	1513.1
67.5°	1278.8	1284.6	1289.5	1299.8	1308.0	1321.8	1332.7	1348.5	1358.3	1368.3	1368.6
70°	1145.6	1151.1	1154.8	1164.5	1171.1	1182.9	1191.7	1205.8	1216.0	1227.2	1230.0
72.5°	1053.5	1056.8	1061.7	1070.5	1079.7	1092.4	1104.1	1118.8	1131.1	1142.7	1147.6
75°	983.4	987.3	990.4	998.0	1004.3	1015.0	1023.8	1037.2	1048.0	1060.4	1066.5
77.5°	882.3	886.6	889.4	896.9	902.4	912.7	919.3	931.3	940.0	951.3	956.8
80°	759.9	764.0	766.1	773.2	777.6	787.0	793.3	804.9	812.3	823.6	830.2
82.5°	624.5	628.4	629.5	636.2	638.6	646.4	651.0	662.9	671.9	686.6	696.8
85°	467.6	469.0	471.3	469.5	479.1	479.6	490.3	492.4	506.4	510.2	526.3
87.5°	285.9	290.1	292.3	298.8	301.6	308.1	310.1	316.9	320.8	328.7	332.4
90°	126.3	133.2	135.7	143.8	146.2	153.4	155.5	163.5	166.0	174.3	178.0
92.5°	36.3	38.6	40.8	43.4	45.7	48.8	51.6	54.1	56.6	59.5	64.3
95°	41.3	43.9	46.5	49.2	51.8	54.4	57.0	59.7	62.3	64.9	72.5
97.5°	51.5	53.8	56.1	58.4	60.7	63.0	65.2	67.5	69.8	71.9	81.1
100°	66.7	68.7	70.5	72.5	74.4	76.3	78.3	80.2	82.1	84.0	101.0
102.5°	109.3	116.1	123.0	129.8	136.7	143.4	150.4	157.1	164.0	170.8	206.6
105°	183.8	202.3	221.0	239.4	258.0	276.6	295.1	313.5	332.0	350.6	409.2
107.5°	312.3	346.6	380.9	415.3	449.7	483.9	518.3	552.6	586.8	620.8	680.3
110°	574.4	601.7	629.5	657.0	684.6	712.2	739.9	767.1	794.9	822.3	865.7



TEST NUMBER: P1444838
 CATALOG NUMBER: EHBR1-48-UNV-TA-L940-UPL30

CANDELA DISTRIBUTION (continued):

	0°	2.5°	5°	7.5°	10°	12.5°	15°	17.5°	20°	22.5°	25°
112.5°	773.7	786.1	798.5	811.1	823.5	835.8	848.2	860.6	873.0	885.2	916.2
115°	817.3	821.6	826.1	830.2	834.7	838.8	843.0	847.2	851.5	855.5	876.5
117.5°	795.6	794.7	793.9	793.0	792.0	791.1	790.1	789.0	788.0	786.9	798.6
120°	744.5	740.4	736.7	732.4	728.5	724.3	720.3	716.2	712.0	707.6	712.6
122.5°	679.5	674.8	670.3	665.2	660.4	655.4	650.7	645.2	640.4	635.4	637.0
125°	619.8	615.0	610.5	605.5	600.4	595.2	590.2	585.1	580.0	574.6	575.4
127.5°	568.5	565.1	561.7	557.9	554.2	550.4	546.7	542.6	539.0	534.8	534.8
130°	536.2	533.2	529.9	526.6	523.3	519.6	516.0	512.4	508.9	505.0	505.1
132.5°	510.4	508.2	505.9	503.4	500.8	497.9	495.3	492.1	489.4	486.6	486.7
135°	494.1	491.8	489.9	487.4	485.0	482.1	479.4	476.6	474.0	471.0	471.5
137.5°	480.4	478.5	476.6	474.2	472.0	469.2	466.8	464.1	461.5	458.7	459.1
140°	468.1	466.4	464.5	462.2	460.2	457.9	455.5	453.0	450.5	447.9	448.6
142.5°	453.8	452.2	450.8	449.0	447.4	445.1	443.3	440.9	439.0	436.8	437.8
145°	445.0	443.7	442.6	441.0	439.4	437.5	435.7	433.7	432.1	430.0	431.1
147.5°	437.3	436.2	435.3	434.1	432.7	431.0	429.5	427.8	426.3	424.6	425.9
150°	430.7	429.8	428.8	427.7	426.3	424.8	423.3	421.9	420.4	418.8	419.9
152.5°	423.2	422.2	421.4	420.3	419.1	417.4	416.4	414.8	413.4	411.9	412.9
155°	419.7	418.7	417.6	416.6	415.3	414.0	412.6	411.4	410.1	408.6	409.4
157.5°	418.2	417.2	416.4	415.2	414.5	413.4	412.3	411.2	410.2	409.1	409.5
160°	418.8	417.8	417.0	416.0	415.0	413.8	412.9	411.8	411.0	409.8	410.2
162.5°	419.5	418.5	417.6	416.5	415.7	414.6	413.7	412.8	411.9	410.8	411.2
165°	421.6	421.0	420.4	419.6	418.9	418.2	417.5	416.6	416.0	415.0	415.3
167.5°	426.8	425.9	425.3	424.5	423.5	422.9	421.9	421.1	420.5	419.4	419.7
170°	429.5	428.7	428.4	427.9	427.3	426.8	426.3	425.8	425.2	424.6	425.0
172.5°	432.6	432.0	431.7	431.4	430.9	430.6	430.1	429.8	429.5	428.9	429.5
175°	433.4	432.9	432.8	432.6	432.3	432.0	431.8	431.5	431.5	431.2	431.4
177.5°	436.6	436.4	436.4	436.3	436.3	436.1	436.0	435.7	435.5	435.5	435.8
180°	439.1	439.1	439.1	439.1	439.1	439.1	439.1	439.1	439.1	439.1	439.1



TEST NUMBER: P1444838
 CATALOG NUMBER: EHBR1-48-UNV-TA-L940-UPL30

CANDELA DISTRIBUTION (continued):

	27.5°	30°	32.5°	35°	37.5°	40°	42.5°	45°	47.5°	50°	52.5°
0°	38129.9	38129.9	38129.9	38129.9	38129.9	38129.9	38129.9	38129.9	38129.9	38129.9	38129.9
2.5°	38249.2	38244.5	38238.2	38230.1	38223.2	38215.2	38196.1	38190.4	38196.7	38201.0	38209.8
5°	38340.0	38342.7	38343.7	38361.1	38376.1	38413.5	38706.9	38823.4	38913.6	38970.9	39057.7
7.5°	38614.1	38702.2	38789.4	38906.7	39007.9	39144.6	39657.8	39876.3	40031.6	40143.2	40280.5
10°	39078.4	39270.9	39451.4	39662.8	39844.5	40052.7	40530.4	40743.3	40877.6	40975.4	41066.8
12.5°	39546.2	39813.1	40054.3	40289.7	40486.3	40666.8	40834.8	40909.3	40915.6	40918.7	40870.3
15°	39789.8	40045.0	40257.5	40413.1	40528.7	40579.9	40290.6	40138.8	39947.1	39789.1	39529.2
17.5°	39636.0	39789.1	39881.0	39871.9	39824.1	39664.2	38844.9	38394.1	37946.8	37543.6	37014.9
20°	38952.5	38940.7	38860.9	38634.7	38362.1	37938.2	36533.5	35723.0	34939.5	34251.3	33416.4
22.5°	37680.8	37480.8	37201.7	36713.9	36172.0	35431.4	33418.4	32226.3	31135.4	30171.8	29092.3
25°	35838.3	35426.6	34912.0	34137.6	33295.4	32215.2	29734.2	28251.3	26941.7	25805.7	24560.2
27.5°	33480.1	32860.1	32106.0	31034.1	29893.2	28509.3	25758.6	24122.2	22716.2	21498.4	20172.7
30°	30688.3	29881.9	28908.2	27577.8	26201.6	24632.1	21842.2	20184.8	18761.7	17508.8	16182.1
32.5°	27533.4	26588.8	25447.8	23954.8	22466.4	20852.6	18158.3	16553.9	15194.5	13989.2	12788.5
35°	24053.6	23040.7	21833.6	20310.6	18831.3	17262.2	14790.1	13343.4	12143.0	11077.6	10108.1
37.5°	20321.0	19326.4	18179.1	16743.7	15371.9	13950.1	11817.0	10604.7	9597.3	8713.1	7964.5
40°	16440.0	15569.7	14577.0	13336.1	12165.3	10981.2	9230.2	8268.0	7473.0	6798.6	6237.6
42.5°	12606.7	11932.1	11170.9	10190.3	9294.4	8392.8	7045.1	6332.1	5743.3	5257.8	4861.2
45°	9146.5	8695.3	8184.8	7503.1	6883.1	6254.2	5295.0	4794.1	4410.6	4097.6	3832.9
47.5°	6393.9	6132.2	6116.3	5486.3	5031.6	4647.1	4029.2	3712.7	3477.7	3288.1	3120.5
50°	4490.3	4363.6	4206.4	3981.5	3770.6	3553.2	3176.7	2985.4	2847.8	2732.9	2626.9
52.5°	3356.8	3291.0	3207.3	3088.0	2973.6	2851.4	2613.2	2491.4	2448.1	2341.1	2257.2
55°	2681.2	2643.5	2595.8	2525.7	2456.2	2428.3	2224.1	2133.7	2076.5	2034.2	1989.2
57.5°	2227.1	2199.0	2170.7	2123.2	2083.0	2034.2	1925.8	1879.5	1845.4	1820.5	1789.3
60°	1899.7	1882.9	1867.0	1839.2	1817.5	1791.2	1722.3	1696.2	1678.4	1663.5	1643.5
62.5°	1676.7	1668.1	1659.9	1645.0	1634.0	1619.8	1572.7	1560.1	1551.2	1543.7	1531.5
65°	1515.7	1509.5	1505.0	1495.1	1489.6	1481.2	1440.9	1432.4	1426.8	1424.2	1417.1
67.5°	1369.5	1363.0	1360.0	1352.9	1350.7	1345.5	1312.4	1307.8	1305.9	1306.7	1304.2
70°	1232.7	1230.0	1231.4	1230.2	1233.4	1234.3	1214.3	1214.2	1216.3	1220.5	1220.9
72.5°	1150.7	1150.7	1152.3	1153.0	1156.0	1157.4	1140.7	1139.9	1140.8	1144.0	1144.1
75°	1072.7	1074.0	1078.2	1079.7	1083.1	1083.9	1061.8	1059.3	1059.5	1062.4	1061.4
77.5°	964.7	969.4	977.5	981.7	988.5	989.8	965.0	962.1	962.2	965.2	962.7
80°	842.2	851.2	864.0	872.9	883.4	887.6	862.1	856.1	850.4	849.6	844.5
82.5°	712.1	723.0	738.3	746.4	757.6	760.1	717.6	709.5	704.7	705.2	700.5
85°	543.6	551.8	565.8	570.4	577.2	576.7	528.1	507.3	512.9	504.2	511.0
87.5°	341.0	345.8	354.6	355.7	359.0	358.2	309.3	299.7	296.9	297.0	293.5
90°	187.2	191.7	200.6	201.9	208.1	208.8	170.4	167.0	162.6	163.3	157.4
92.5°	69.4	74.0	78.9	83.7	88.6	93.4	93.8	97.3	92.7	87.5	83.2
95°	80.2	87.9	95.6	103.3	111.1	118.7	126.4	134.2	127.0	119.7	112.5
97.5°	90.2	99.3	108.4	117.4	126.5	135.6	144.8	153.9	146.2	138.2	130.4
100°	117.9	135.0	151.9	168.8	185.8	202.8	219.8	236.8	221.9	206.7	191.8
102.5°	242.6	278.7	314.7	350.7	386.7	422.8	459.0	495.2	460.9	426.4	392.0
105°	467.6	526.0	584.4	642.6	701.1	759.5	818.4	876.8	822.0	767.0	712.2
107.5°	739.4	798.9	857.9	917.0	976.3	1035.5	1095.4	1154.7	1101.1	1047.4	993.9
110°	908.9	952.0	995.2	1038.2	1081.3	1124.5	1168.6	1211.8	1179.6	1147.3	1115.1



TEST NUMBER: P1444838
 CATALOG NUMBER: EHBR1-48-UNV-TA-L940-UPL30

CANDELA DISTRIBUTION (continued):

	27.5°	30°	32.5°	35°	37.5°	40°	42.5°	45°	47.5°	50°	52.5°
112.5°	946.8	977.8	1008.6	1039.3	1069.9	1100.7	1132.8	1163.8	1147.5	1131.0	1115.0
115°	897.0	917.9	938.4	959.0	979.7	1000.2	1022.4	1043.5	1038.0	1032.6	1027.4
117.5°	810.0	821.3	832.9	844.3	855.5	866.9	880.4	892.1	892.7	893.4	894.0
120°	717.2	721.9	726.5	731.2	735.7	740.2	747.3	752.4	756.5	760.3	764.4
122.5°	638.6	640.2	641.7	643.3	644.9	646.3	650.7	652.8	655.3	658.0	660.6
125°	576.0	576.6	577.2	577.7	578.0	578.6	582.5	583.5	583.3	583.1	582.9
127.5°	534.6	534.4	534.2	534.0	533.6	533.5	536.6	537.0	534.9	532.6	530.4
130°	505.2	505.2	505.2	505.4	505.5	505.5	509.1	510.1	506.5	502.6	499.1
132.5°	486.8	487.1	487.1	487.4	487.6	487.7	491.8	492.9	488.9	484.5	480.4
135°	471.7	472.2	472.4	472.7	473.1	473.6	478.2	479.5	475.7	471.5	467.6
137.5°	459.2	459.7	460.0	460.6	460.9	461.4	466.5	468.0	464.8	461.4	458.2
140°	449.1	449.5	450.1	450.9	451.4	452.2	457.7	459.5	457.0	454.3	451.6
142.5°	438.3	439.6	440.6	441.8	442.7	444.0	450.4	452.6	450.7	448.5	446.6
145°	432.1	433.5	434.7	436.1	437.4	439.0	446.1	448.8	447.5	446.1	444.6
147.5°	426.4	427.7	428.9	430.1	431.4	433.1	440.6	443.3	442.5	441.4	440.6
150°	420.8	422.1	423.2	424.6	426.1	427.7	436.1	439.2	438.4	437.7	436.8
152.5°	413.7	414.9	416.0	417.1	418.4	419.9	430.0	433.3	432.7	431.8	431.3
155°	410.1	410.9	411.6	412.6	413.5	414.8	425.7	429.0	428.6	428.1	427.5
157.5°	409.8	410.3	410.7	411.3	412.0	412.7	424.1	427.5	427.0	426.6	426.1
160°	410.3	410.8	410.9	411.4	411.7	412.3	424.0	427.2	426.9	426.3	425.9
162.5°	411.6	412.4	412.7	413.4	413.8	414.7	426.4	430.0	429.3	428.7	428.1
165°	415.6	415.7	416.0	416.4	416.6	417.0	428.1	431.1	430.8	430.2	429.8
167.5°	420.0	420.4	420.5	421.0	421.4	421.9	432.3	435.2	434.9	434.2	434.0
170°	425.1	425.6	425.7	426.1	426.5	427.1	435.6	438.1	437.8	437.0	436.6
172.5°	429.8	430.3	430.7	431.2	431.5	432.2	439.5	441.8	441.4	440.9	440.3
175°	431.7	432.0	432.5	432.9	433.3	433.8	439.5	441.1	440.9	440.7	440.4
177.5°	436.2	436.3	436.7	437.0	437.4	437.7	441.1	442.3	442.1	442.1	442.0
180°	439.1	439.1	439.1	439.1	439.1	439.1	439.1	439.1	439.1	439.1	439.1



TEST NUMBER: P1444838
 CATALOG NUMBER: EHBR1-48-UNV-TA-L940-UPL30

CANDELA DISTRIBUTION (continued):

	55°	57.5°	60°	62.5°	65°	67.5°	70°	72.5°	75°	77.5°	80°
0°	38129.9	38129.9	38129.9	38129.9	38129.9	38129.9	38129.9	38129.9	38129.9	38129.9	38129.9
2.5°	38211.7	38225.1	38227.1	38242.8	38241.5	38260.2	38257.3	38272.5	38263.6	38276.2	38265.6
5°	39109.2	39190.6	39233.2	39312.6	39337.7	39408.8	39428.9	39493.8	39496.5	39547.9	39536.1
7.5°	40378.1	40498.1	40569.3	40667.4	40717.2	40799.1	40835.1	40895.6	40915.1	40963.2	40966.8
10°	41135.8	41194.0	41234.7	41262.1	41287.2	41298.9	41312.6	41308.9	41312.6	41307.2	41318.9
12.5°	40837.8	40752.7	40696.4	40589.9	40528.2	40410.4	40352.6	40239.4	40198.4	40101.1	40087.1
15°	39328.4	39031.9	38822.5	38517.9	38326.3	38026.6	37851.3	37580.9	37457.4	37242.4	37186.1
17.5°	36577.3	36027.0	35601.1	35054.7	34675.7	34165.0	33844.0	33421.3	33189.9	32849.0	32731.0
20°	32720.4	31906.2	31267.3	30506.3	29961.7	29283.1	28848.7	28300.8	27982.7	27564.1	27394.4
22.5°	28192.2	27178.5	26380.7	25481.6	24824.5	24068.3	23547.9	22955.1	22609.0	22154.3	21952.8
25°	23525.1	22407.2	21520.2	20572.9	19878.6	19120.6	18600.0	18017.7	17659.6	17227.9	17027.8
27.5°	19061.5	17929.8	17072.6	16191.9	15555.0	14871.0	14401.3	13892.9	13575.0	13206.5	13018.3
30°	15122.3	14124.2	13394.7	12663.9	12134.0	11578.6	11188.2	10766.8	10488.0	10172.5	9993.2
32.5°	11913.0	11142.5	10571.3	9991.3	9557.8	9093.5	8756.3	8384.4	8132.8	7851.0	7688.6
35°	9435.0	8836.2	8380.6	7903.2	7530.8	7135.4	6838.2	6517.2	6291.4	6048.8	5908.6
37.5°	7454.6	6978.5	6603.6	6207.1	5901.1	5573.6	5463.2	5094.9	4861.0	4667.4	4533.2
40°	5850.4	5471.8	5161.6	4858.3	4608.9	4360.4	4161.0	3964.2	3813.2	3674.7	3578.9
42.5°	4568.7	4294.4	4067.8	3845.7	3663.7	3482.7	3338.3	3202.7	3101.0	3010.4	2948.7
45°	3631.9	3443.3	3285.8	3129.4	3000.9	2880.1	2782.9	2696.4	2630.7	2576.3	2537.7
47.5°	2983.7	2854.6	2743.5	2638.0	2550.8	2471.6	2406.4	2385.2	2314.6	2267.0	2248.9
50°	2535.8	2457.8	2373.4	2295.5	2237.3	2179.3	2137.1	2095.6	2069.3	2047.4	2040.7
52.5°	2201.4	2141.8	2094.8	2045.5	2007.0	1965.9	1936.7	1909.1	1894.6	1883.1	1881.7
55°	1952.8	1911.1	1880.1	1847.0	1824.0	1799.8	1784.7	1770.1	1763.7	1757.9	1758.4
57.5°	1764.7	1736.9	1716.7	1695.2	1682.7	1671.2	1667.4	1663.7	1665.7	1666.5	1669.8
60°	1627.7	1609.6	1596.8	1584.5	1579.3	1575.7	1578.5	1581.7	1588.4	1593.8	1598.5
62.5°	1522.7	1512.3	1506.1	1499.5	1498.9	1499.2	1504.9	1510.4	1518.7	1524.9	1529.6
65°	1414.5	1408.6	1406.6	1402.4	1404.5	1405.8	1412.6	1416.8	1425.1	1430.1	1436.0
67.5°	1305.3	1303.9	1305.1	1305.1	1309.0	1312.2	1318.7	1323.6	1330.6	1335.1	1340.0
70°	1224.6	1225.2	1228.2	1228.7	1232.8	1235.1	1240.8	1243.8	1250.2	1254.0	1259.8
72.5°	1146.2	1144.9	1145.6	1143.8	1145.2	1144.6	1147.8	1149.3	1154.7	1157.7	1164.7
75°	1062.6	1059.2	1058.3	1054.5	1054.6	1051.9	1053.2	1053.0	1056.6	1058.0	1063.1
77.5°	961.7	955.9	953.0	946.6	946.6	944.1	946.6	948.2	954.5	957.4	963.2
80°	841.1	831.8	827.6	820.2	821.4	821.1	827.2	832.0	839.5	841.0	848.3
82.5°	699.1	689.6	685.1	677.9	679.5	679.7	685.4	686.3	693.0	695.8	704.3
85°	500.6	504.2	494.1	494.9	492.7	496.8	500.6	505.3	510.8	520.0	527.1
87.5°	294.8	293.5	297.0	297.5	302.6	305.2	313.4	318.1	327.3	334.5	347.5
90°	156.5	150.7	152.4	149.7	153.4	150.9	154.6	151.4	156.0	155.6	161.8
92.5°	77.7	73.2	67.8	63.3	58.0	53.7	50.9	49.0	46.3	44.5	41.7
95°	105.4	98.1	90.9	83.8	76.6	69.4	66.8	64.2	61.5	58.9	56.3
97.5°	122.7	115.1	107.3	99.4	91.7	83.9	82.2	80.4	78.7	77.0	75.2
100°	176.7	161.8	146.9	131.9	117.0	102.1	100.7	99.3	97.9	96.5	95.0
102.5°	357.8	323.5	289.3	255.0	220.8	186.4	180.5	174.5	168.5	162.6	156.6
105°	657.3	602.3	547.5	492.7	437.9	383.1	366.8	350.2	333.9	317.6	301.2
107.5°	940.3	886.6	833.3	779.8	726.3	672.8	646.9	621.1	595.1	569.3	543.5
110°	1082.5	1050.3	1018.3	985.9	953.9	921.8	896.9	872.4	847.5	822.9	798.3



TEST NUMBER: P1444838
 CATALOG NUMBER: EHBR1-48-UNV-TA-L940-UPL30

CANDELA DISTRIBUTION (continued):

	55°	57.5°	60°	62.5°	65°	67.5°	70°	72.5°	75°	77.5°	80°
112.5°	1098.6	1082.4	1066.0	1050.0	1033.8	1017.6	1005.6	993.5	981.5	969.4	957.2
115°	1021.9	1016.6	1011.3	1006.2	1001.1	995.7	994.7	993.9	992.8	991.9	991.1
117.5°	894.6	895.3	895.9	896.7	897.5	898.3	904.6	910.7	917.1	923.5	930.2
120°	768.4	772.4	776.3	780.5	784.5	788.8	797.0	805.6	814.0	822.7	831.4
122.5°	663.2	665.9	668.5	671.3	674.0	676.8	684.9	693.2	701.5	710.0	718.8
125°	582.5	582.2	582.0	581.5	581.3	581.3	587.9	594.6	601.5	608.6	615.4
127.5°	528.1	525.5	523.2	521.1	518.6	516.5	520.1	524.1	527.8	531.9	535.8
130°	495.3	491.4	487.4	483.9	479.8	476.3	477.4	478.8	480.0	481.5	482.9
132.5°	476.1	471.8	467.4	463.0	458.6	454.4	453.8	453.3	452.9	452.7	452.5
135°	463.4	459.4	455.0	450.9	446.6	442.6	441.2	439.7	438.4	437.2	436.2
137.5°	454.8	451.5	448.0	444.8	441.1	437.9	435.8	434.3	432.4	431.1	429.5
140°	448.8	446.3	443.3	440.6	437.7	435.1	433.3	432.0	430.4	429.2	427.8
142.5°	444.3	442.3	440.1	438.1	435.8	433.8	432.2	430.8	429.4	428.2	426.8
145°	443.1	441.8	440.2	438.7	437.2	435.8	434.3	433.3	432.1	431.1	430.3
147.5°	439.6	438.6	437.6	436.5	435.4	434.3	433.3	432.7	431.6	431.1	430.2
150°	435.8	435.0	434.0	433.2	432.0	431.2	430.5	430.0	429.3	429.0	428.3
152.5°	430.1	429.5	428.7	427.9	426.9	425.9	425.4	425.0	424.6	424.2	423.4
155°	426.9	426.3	425.6	425.0	424.2	423.7	423.1	422.3	421.8	421.2	420.5
157.5°	425.6	425.0	424.3	423.9	423.1	422.5	421.9	421.4	420.6	420.2	419.5
160°	425.3	424.9	424.2	423.6	423.1	422.5	421.6	421.0	420.1	419.5	418.7
162.5°	427.3	426.7	426.0	425.3	424.5	423.8	423.2	422.6	421.9	421.4	420.7
165°	429.2	428.7	428.1	427.5	427.1	426.5	425.7	425.0	424.2	423.5	422.8
167.5°	433.4	433.0	432.5	432.0	431.4	430.8	430.1	429.4	428.7	427.9	427.1
170°	436.0	435.4	434.9	434.1	433.6	432.8	432.2	431.4	430.7	430.2	429.4
172.5°	439.8	439.6	439.0	438.5	437.8	437.3	436.8	436.3	435.6	435.1	434.7
175°	440.3	440.1	440.0	439.6	439.5	439.2	438.9	438.7	438.4	438.3	437.9
177.5°	442.0	441.8	441.8	441.5	441.4	441.4	441.0	440.9	440.6	440.2	440.1
180°	439.1	439.1	439.1	439.1	439.1	439.1	439.1	439.1	439.1	439.1	439.1



TEST NUMBER: P1444838
 CATALOG NUMBER: EHBR1-48-UNV-TA-L940-UPL30

CANDELA DISTRIBUTION (continued):

	82.5°	85°	87.5°	90°	92.5°	95°	97.5°	100°	102.5°	105°	107.5°
0°	38129.9	38129.9	38129.9	38129.9	38129.9	38129.9	38129.9	38129.9	38129.9	38129.9	38129.9
2.5°	38276.6	38266.9	38271.5	38253.6	38257.8	38236.2	38234.2	38209.8	38207.3	38184.3	38175.7
5°	39572.6	39551.2	39575.3	39537.8	39545.2	39496.5	39492.4	39429.3	39407.6	39328.7	39294.7
7.5°	40996.9	40988.9	41003.5	40972.2	40971.2	40927.7	40909.7	40853.2	40818.1	40735.4	40682.4
10°	41308.9	41316.2	41304.2	41307.2	41290.3	41285.6	41268.2	41257.2	41228.8	41207.3	41175.7
12.5°	40013.2	40021.0	39971.5	40002.9	39978.1	40036.0	40031.3	40099.4	40109.9	40196.0	40228.7
15°	37018.7	37009.3	36914.5	36974.2	36942.2	37069.1	37097.5	37268.2	37359.5	37578.7	37713.3
17.5°	32494.9	32470.5	32336.9	32409.6	32372.6	32559.7	32622.5	32895.5	33065.8	33419.0	33670.6
20°	27102.3	27055.5	26899.3	26984.5	26946.4	27158.9	27248.5	27578.4	27798.1	28265.8	28598.5
22.5°	21642.8	21568.9	21415.8	21495.4	21459.3	21679.6	21796.1	22127.2	22378.8	22858.9	23247.4
25°	16740.2	16674.3	16526.4	16582.1	16568.7	16754.9	16858.6	17171.8	17419.0	17876.3	18247.2
27.5°	12768.1	12699.6	12565.9	12605.4	12591.7	12750.5	12848.2	13109.8	13322.5	13707.6	14033.2
30°	9772.1	9689.5	9576.1	9597.9	9588.6	9717.2	9808.5	10028.8	10211.1	10536.5	10817.1
32.5°	7490.3	7407.2	7303.1	7313.3	7299.5	7400.4	7475.6	7667.3	7826.1	8102.8	8347.0
35°	5731.1	5828.2	5605.8	5746.7	5600.0	5815.3	5737.9	5857.6	5994.3	6227.4	6431.1
37.5°	4405.8	4338.2	4281.0	4274.9	4274.6	4324.5	4383.4	4498.7	4619.1	4792.9	4972.3
40°	3491.4	3443.9	3406.9	3404.2	3406.9	3442.4	3485.9	3565.6	3653.8	3778.6	3910.4
42.5°	2895.8	2864.3	2842.0	2840.4	2847.5	2872.6	2902.9	2950.2	3007.6	3088.4	3178.9
45°	2506.3	2488.8	2476.4	2475.7	2478.9	2492.1	2509.5	2539.0	2575.3	2625.7	2683.0
47.5°	2233.1	2228.8	2221.0	2221.3	2217.8	2223.2	2225.1	2241.6	2261.0	2299.0	2373.8
50°	2034.1	2034.1	2028.7	2028.4	2023.3	2023.1	2018.8	2025.3	2034.3	2057.9	2081.9
52.5°	1876.8	1876.2	1870.5	1869.3	1863.9	1863.7	1859.9	1862.5	1863.8	1875.7	1889.9
55°	1753.8	1750.2	1742.5	1740.1	1738.0	1741.2	1739.8	1739.8	1738.3	1743.3	1747.5
57.5°	1665.7	1660.8	1653.7	1651.5	1651.0	1654.6	1654.8	1653.5	1646.9	1642.4	1636.0
60°	1595.8	1591.1	1583.2	1581.3	1582.4	1587.5	1587.2	1583.0	1573.1	1564.5	1554.5
62.5°	1527.3	1525.4	1521.4	1520.8	1519.8	1520.7	1517.2	1512.6	1502.8	1493.7	1482.8
65°	1435.3	1436.3	1433.3	1433.8	1430.3	1429.7	1424.3	1419.9	1410.0	1401.7	1390.6
67.5°	1339.8	1340.5	1338.1	1338.1	1336.3	1336.5	1333.3	1329.2	1320.9	1314.1	1305.4
70°	1261.1	1263.0	1261.6	1262.1	1259.8	1258.9	1253.9	1249.9	1241.3	1235.6	1227.9
72.5°	1166.8	1171.1	1170.9	1171.9	1168.6	1166.8	1160.7	1155.8	1148.1	1143.5	1137.3
75°	1065.1	1070.6	1072.1	1074.6	1069.7	1067.2	1060.6	1056.6	1050.2	1047.5	1043.4
77.5°	965.7	971.8	977.6	983.0	975.2	968.3	960.0	953.6	944.5	941.1	934.6
80°	854.2	864.9	877.8	888.6	874.6	860.5	846.8	836.6	824.6	819.7	811.7
82.5°	708.7	719.7	727.1	734.0	724.3	713.9	700.6	691.7	678.7	674.0	664.7
85°	538.4	552.1	556.5	560.2	554.0	548.5	536.0	519.2	511.0	498.2	491.5
87.5°	354.1	362.3	363.9	365.1	361.4	358.7	350.6	342.7	328.7	318.5	306.0
90°	160.1	164.1	159.5	160.1	156.6	158.5	151.8	150.5	140.3	137.4	128.6
92.5°	39.7	37.1	34.8	32.5	35.4	37.2	40.0	41.7	44.4	46.3	49.0
95°	53.7	51.0	48.4	45.7	47.9	49.9	52.1	54.1	56.3	58.3	60.5
97.5°	73.4	71.7	70.0	68.2	69.4	70.6	71.8	73.0	74.3	75.6	77.0
100°	93.6	92.2	90.8	89.4	89.4	89.4	89.4	89.4	89.4	89.4	89.4
102.5°	150.6	144.7	138.7	132.8	136.8	140.8	144.9	148.9	152.9	156.9	161.2
105°	284.9	268.6	252.3	236.0	251.7	267.6	283.3	299.2	314.9	331.0	346.8
107.5°	517.5	491.8	466.0	440.2	469.2	498.0	526.7	555.4	584.2	613.0	642.0
110°	773.8	749.2	724.7	700.1	730.7	761.2	791.7	822.2	852.8	883.3	914.1



TEST NUMBER: P1444838
 CATALOG NUMBER: EHBR1-48-UNV-TA-L940-UPL30

CANDELA DISTRIBUTION (continued):

	82.5°	85°	87.5°	90°	92.5°	95°	97.5°	100°	102.5°	105°	107.5°
112.5°	945.2	933.3	921.4	909.5	929.1	948.8	968.4	988.3	1007.9	1027.8	1047.4
115°	990.2	989.5	988.8	988.1	997.4	1006.7	1016.0	1025.5	1034.9	1044.2	1053.7
117.5°	936.5	943.0	949.6	956.3	959.3	962.3	965.5	968.4	971.7	974.8	978.0
120°	840.2	848.7	857.7	866.6	865.4	864.2	863.1	861.9	861.0	859.9	859.3
122.5°	727.4	736.1	745.0	753.9	751.3	748.6	746.1	743.6	741.3	739.0	736.8
125°	622.8	630.0	637.3	644.8	642.2	639.5	637.0	634.8	632.4	630.1	628.1
127.5°	540.3	544.7	549.0	553.7	552.5	551.3	550.4	549.3	548.6	547.9	547.2
130°	484.6	486.4	488.6	490.4	490.8	491.2	491.9	492.6	493.5	494.2	495.4
132.5°	452.8	452.8	453.2	453.5	454.9	456.3	458.1	459.8	461.9	463.7	466.3
135°	435.5	434.7	434.1	433.6	435.7	437.6	440.1	442.4	445.2	448.0	451.0
137.5°	428.4	427.2	426.3	425.2	427.3	429.4	431.8	434.2	436.9	439.7	442.9
140°	426.8	425.8	425.1	424.2	426.3	428.2	430.6	432.9	435.7	438.4	441.4
142.5°	425.9	424.7	424.1	423.4	425.1	427.1	429.3	431.4	434.0	436.4	439.1
145°	429.4	428.6	428.1	427.4	428.7	430.0	431.6	433.3	435.3	436.9	439.2
147.5°	429.7	429.1	428.8	428.4	429.4	430.3	431.5	432.6	434.1	435.4	437.0
150°	428.2	427.7	427.4	427.3	428.0	428.5	429.4	429.9	430.9	431.7	433.0
152.5°	423.3	422.8	422.9	422.6	423.1	423.5	424.3	424.8	425.7	426.3	427.5
155°	420.3	419.8	419.3	419.0	419.1	419.1	419.4	419.5	420.0	420.3	420.6
157.5°	419.2	418.7	418.4	417.8	417.7	417.5	417.6	417.5	417.6	417.3	417.5
160°	418.2	417.4	416.7	416.1	416.2	416.0	416.2	416.0	416.2	416.3	416.4
162.5°	420.3	419.7	419.3	418.8	418.5	417.8	417.6	417.0	416.7	416.4	416.4
165°	421.9	421.2	420.6	419.7	419.6	419.4	419.1	419.0	418.8	418.5	418.5
167.5°	426.6	425.8	425.1	424.4	423.9	423.2	422.8	422.2	421.8	421.4	421.2
170°	428.9	428.2	427.7	427.2	426.9	426.4	426.3	425.9	425.8	425.6	425.6
172.5°	434.1	433.6	433.1	432.7	432.4	432.1	431.9	431.8	431.5	431.5	431.4
175°	437.7	437.4	437.3	437.0	436.7	436.5	436.2	436.0	435.9	435.5	435.4
177.5°	439.6	439.4	439.2	439.0	438.8	438.8	438.8	438.8	438.8	438.7	438.5
180°	439.1	439.1	439.1	439.1	439.1	439.1	439.1	439.1	439.1	439.1	439.1



TEST NUMBER: P1444838
 CATALOG NUMBER: EHBR1-48-UNV-TA-L940-UPL30

CANDELA DISTRIBUTION (continued):

	110°	112.5°	115°	117.5°	120°	122.5°	125°	127.5°	130°	132.5°	135°
0°	38129.9	38129.9	38129.9	38129.9	38129.9	38129.9	38129.9	38129.9	38129.9	38129.9	38129.9
2.5°	38151.0	38140.9	38114.6	38101.5	38077.1	38064.8	38045.7	38033.4	38018.0	38006.6	38000.6
5°	39208.0	39159.2	39061.5	39001.3	38895.7	38826.1	38721.3	38644.5	38536.2	38456.4	38354.1
7.5°	40583.2	40508.4	40383.2	40288.2	40140.5	40027.6	39861.9	39729.3	39546.2	39394.1	39207.0
10°	41143.1	41099.5	41043.3	40982.2	40900.4	40820.1	40706.9	40591.6	40437.9	40284.9	40085.2
12.5°	40315.7	40356.7	40437.9	40475.7	40537.8	40558.8	40587.2	40573.9	40548.8	40486.3	40395.8
15°	37971.9	38143.6	38414.9	38602.6	38865.6	39050.3	39294.7	39451.9	39633.0	39741.3	39844.2
17.5°	34116.6	34448.7	34927.5	35309.5	35822.2	36239.1	36750.0	37151.3	37614.7	37970.2	38348.7
20°	29178.5	29643.6	30304.5	30865.8	31608.9	32238.9	33046.1	33722.3	34511.1	35168.7	35878.3
22.5°	23863.8	24410.9	25168.1	25845.2	26732.5	27525.0	28536.4	29430.5	30496.9	31452.2	32508.8
25°	18850.0	19386.1	20157.6	20858.6	21816.4	22689.5	23794.4	24820.2	26057.6	27211.6	28536.4
27.5°	14550.4	15026.6	15704.7	16335.8	17213.1	18070.1	19191.4	20285.2	21605.6	22845.8	24273.5
30°	11237.0	11623.4	12166.7	12674.3	13378.6	14079.6	15078.3	16089.9	17403.8	18688.9	20152.6
32.5°	8708.4	9037.7	9491.3	9903.4	10446.1	10974.6	11710.1	12518.4	13671.0	14902.0	16317.2
35°	6741.2	7023.0	7409.1	7764.1	8210.3	8629.9	9178.8	9755.7	10635.3	11670.7	12937.3
37.5°	5374.5	5489.3	5764.9	6055.7	6426.4	6771.2	7200.5	7627.1	8256.4	9073.4	10108.1
40°	4087.2	4269.6	4493.9	4723.0	5003.7	5280.2	5751.2	5978.0	6392.3	6978.8	7781.8
42.5°	3297.8	3426.1	3584.0	3743.3	3938.8	4131.5	4369.7	4612.4	4922.1	5319.3	5890.5
45°	2759.7	2843.4	2945.1	3051.2	3179.7	3311.2	3470.7	3637.2	3847.1	4091.3	4438.3
47.5°	2400.2	2446.4	2512.8	2585.3	2673.4	2764.4	2868.1	2974.3	3104.7	3249.5	3447.1
50°	2119.6	2158.2	2209.8	2258.2	2319.0	2412.2	2453.4	2512.0	2590.4	2675.7	2786.2
52.5°	1916.5	1942.2	1974.6	2002.4	2040.9	2075.8	2121.5	2162.0	2216.2	2267.3	2338.7
55°	1758.4	1767.7	1786.1	1804.0	1830.6	1854.4	1885.8	1912.3	1946.9	1977.5	2022.5
57.5°	1636.2	1637.1	1645.6	1654.9	1672.0	1687.0	1708.6	1726.0	1750.0	1769.6	1796.5
60°	1548.5	1543.8	1545.5	1548.8	1558.5	1568.1	1582.0	1593.3	1608.4	1619.5	1634.6
62.5°	1475.4	1468.1	1466.4	1465.6	1470.4	1473.9	1481.4	1486.9	1495.6	1500.3	1508.4
65°	1383.2	1374.5	1371.2	1367.2	1368.6	1367.5	1370.4	1370.5	1374.8	1375.9	1380.5
67.5°	1299.6	1292.3	1287.9	1282.6	1280.2	1276.4	1274.7	1271.0	1270.4	1267.3	1266.6
70°	1223.3	1216.2	1212.4	1207.5	1205.0	1199.9	1196.8	1190.5	1186.9	1181.1	1177.9
72.5°	1134.9	1130.9	1129.8	1126.5	1125.5	1122.7	1121.4	1117.0	1114.5	1109.6	1106.8
75°	1042.6	1039.3	1039.1	1035.7	1035.4	1032.0	1031.1	1026.5	1024.1	1019.1	1017.1
77.5°	932.7	927.8	926.4	922.5	923.4	921.8	923.2	919.6	918.1	913.2	911.6
80°	808.9	802.7	800.1	794.9	796.3	793.9	796.3	796.0	797.9	793.9	793.2
82.5°	662.2	655.4	654.1	650.5	652.9	653.2	658.4	655.6	656.7	653.0	654.6
85°	481.8	476.8	469.7	468.7	464.2	468.9	462.8	466.9	460.2	464.9	458.7
87.5°	298.8	288.3	282.8	275.3	272.4	265.2	262.3	257.0	258.6	256.2	257.6
90°	127.5	119.8	119.8	114.4	115.6	111.2	113.9	111.4	114.8	112.1	115.8
92.5°	50.9	53.1	57.2	61.8	65.8	70.0	74.1	78.6	82.6	87.1	91.0
95°	62.5	64.7	70.2	75.8	81.5	87.1	92.8	98.4	104.1	109.7	115.2
97.5°	78.2	79.4	85.0	90.6	96.2	101.8	107.5	113.4	119.0	124.7	130.2
100°	89.4	89.5	105.5	121.5	137.4	153.5	169.6	185.5	201.7	217.7	233.7
102.5°	165.2	169.2	209.5	250.0	290.3	330.6	371.2	411.7	452.0	492.7	533.1
105°	362.6	378.4	440.0	501.8	563.3	624.9	686.7	748.6	810.2	871.9	933.6
107.5°	670.8	699.7	755.5	811.2	866.7	922.6	978.5	1034.3	1089.9	1145.8	1201.9
110°	944.6	975.3	1012.6	1050.1	1087.5	1124.9	1162.4	1199.9	1237.5	1275.0	1312.7



TEST NUMBER: P1444838
 CATALOG NUMBER: EHBR1-48-UNV-TA-L940-UPL30

CANDELA DISTRIBUTION (continued):

	110°	112.5°	115°	117.5°	120°	122.5°	125°	127.5°	130°	132.5°	135°
112.5°	1067.1	1087.0	1108.8	1130.8	1152.7	1174.6	1196.5	1218.5	1240.7	1262.8	1284.7
115°	1063.3	1072.9	1081.3	1090.1	1098.6	1107.4	1116.0	1125.1	1134.0	1142.8	1151.7
117.5°	981.2	984.7	986.1	987.7	989.2	991.1	992.8	994.6	996.5	998.4	1000.0
120°	858.4	857.6	856.4	855.3	854.1	853.2	852.4	851.4	850.7	849.8	848.9
122.5°	734.5	732.6	731.4	730.5	729.7	728.9	728.1	727.6	727.0	726.3	725.5
125°	626.0	624.2	625.9	627.5	629.2	631.0	632.7	634.8	636.7	638.5	640.6
127.5°	546.6	546.4	550.0	553.8	557.6	561.4	565.3	569.3	573.1	577.3	581.1
130°	496.6	498.0	502.5	507.4	512.0	517.0	521.8	526.9	531.6	536.4	541.3
132.5°	468.3	471.0	475.3	480.2	484.6	489.4	494.2	499.0	503.6	508.6	513.1
135°	454.0	457.3	461.4	465.8	470.1	474.6	478.9	483.4	487.5	492.0	496.2
137.5°	445.8	449.1	452.6	456.1	459.5	463.4	466.9	470.7	474.0	477.7	481.1
140°	444.3	447.6	449.6	452.1	454.3	456.6	458.7	461.2	463.1	465.7	467.7
142.5°	441.7	444.8	446.1	447.7	449.2	451.1	452.7	454.3	455.7	457.1	458.5
145°	441.1	443.5	443.8	444.5	445.0	445.6	446.0	446.6	446.9	447.4	447.7
147.5°	438.6	440.3	440.2	440.6	440.8	440.8	440.9	441.1	440.9	441.2	441.2
150°	434.0	435.3	434.8	434.8	434.3	434.2	433.8	433.8	433.3	433.2	432.7
152.5°	428.3	429.4	428.7	428.6	427.9	427.5	427.0	426.7	426.1	425.8	425.4
155°	420.9	421.4	421.0	420.8	420.5	420.3	419.9	420.0	419.8	419.6	419.5
157.5°	417.5	417.6	417.4	417.2	416.8	416.8	416.7	416.6	416.6	416.9	417.0
160°	416.4	416.6	416.3	416.1	415.9	415.7	415.6	415.7	415.7	416.1	416.2
162.5°	415.9	415.8	415.4	415.2	415.1	415.1	415.0	415.3	415.3	415.6	415.8
165°	418.6	418.8	418.1	418.0	417.7	417.5	417.3	417.2	417.4	417.4	417.5
167.5°	420.8	420.6	420.6	420.8	420.8	420.9	421.1	421.7	421.8	422.3	422.5
170°	425.5	425.6	425.3	425.2	425.0	425.0	425.0	425.0	425.1	425.2	425.1
172.5°	431.4	431.4	431.0	430.6	430.3	430.1	429.8	429.7	429.4	429.1	428.7
175°	435.1	434.9	434.7	434.5	434.3	434.0	433.9	433.4	433.2	433.0	432.8
177.5°	438.4	438.2	438.0	438.0	437.9	437.7	437.7	437.6	437.6	437.6	437.3
180°	439.1	439.1	439.1	439.1	439.1	439.1	439.1	439.1	439.1	439.1	439.1



TEST NUMBER: P1444838
 CATALOG NUMBER: EHBR1-48-UNV-TA-L940-UPL30

CANDELA DISTRIBUTION (continued):

	137.5°	140°	142.5°	145°	147.5°	150°	152.5°	155°	157.5°	160°	162.5°
0°	38129.9	38129.9	38129.9	38129.9	38129.9	38129.9	38129.9	38129.9	38129.9	38129.9	38129.9
2.5°	37993.0	37992.6	37988.9	37990.5	37991.3	37994.0	37997.3	38000.6	38001.4	38004.0	38004.5
5°	38277.3	38183.3	38113.8	38037.3	37979.8	37928.1	37893.7	37866.3	37855.6	37858.3	37864.7
7.5°	39048.3	38854.3	38694.2	38512.2	38360.4	38199.7	38066.5	37939.9	37847.5	37778.8	37740.3
10°	39894.4	39658.1	39432.0	39168.6	38918.7	38652.1	38410.5	38167.4	37964.6	37788.5	37659.2
12.5°	40269.8	40102.8	39907.4	39658.8	39391.5	39083.7	38773.0	38440.0	38130.2	37842.6	37610.7
15°	39872.3	39872.6	39801.4	39682.1	39496.5	39250.5	38954.5	38607.3	38241.8	37868.9	37528.2
17.5°	38610.4	38848.5	38980.9	39064.7	39039.0	38948.4	38760.0	38493.4	38152.7	37755.4	37339.7
20°	36443.4	37004.9	37405.3	37765.4	37967.2	38101.2	38087.8	37979.3	37736.7	37398.9	36965.9
22.5°	33407.6	34350.1	35094.0	35787.5	36273.9	36669.6	36857.7	36937.5	36827.6	36592.2	36185.7
25°	29720.4	31002.0	32095.7	33157.1	33953.3	34637.5	35048.7	35338.4	35361.4	35238.5	34875.8
27.5°	25623.3	27136.1	28520.3	29930.9	31050.5	32034.2	32679.6	33152.0	33302.0	33282.3	32952.9
30°	21531.4	23119.5	24645.3	26290.2	27675.6	28932.3	29784.9	30423.8	30670.0	30717.2	30400.3
32.5°	17667.1	19233.1	20754.6	22474.3	23998.9	25439.2	26446.5	27205.4	27491.6	27559.1	27211.6
35°	14160.0	15604.8	17050.7	18717.3	20233.2	21724.7	22786.0	23580.5	23847.9	23893.0	23490.6
37.5°	11118.6	12349.6	13609.6	15105.0	16497.0	17897.7	18906.2	19652.8	19847.6	19835.6	19380.2
40°	8557.8	9514.8	10527.2	11758.3	12915.7	14099.7	14951.3	15568.5	15670.8	15595.1	15116.8
42.5°	6435.1	7126.2	7860.2	8779.2	9637.9	10524.1	11143.6	11601.9	11616.4	11496.6	11067.3
45°	4794.1	5468.4	5776.2	6331.8	6885.0	7474.2	7852.6	8135.6	8091.8	7986.3	7660.1
47.5°	3654.7	3913.8	4188.7	4533.2	4855.4	5241.1	5474.5	5929.1	5601.7	5824.9	5333.5
50°	2902.2	3047.0	3195.1	3378.0	3546.3	3721.1	3830.3	3911.9	3901.3	3866.2	3772.1
52.5°	2469.0	2513.9	2586.7	2690.8	2784.7	2879.3	2941.5	2992.1	2993.0	2978.9	2931.2
55°	2063.6	2120.4	2172.9	2240.8	2356.6	2374.4	2463.6	2445.5	2452.5	2427.8	2453.1
57.5°	1819.4	1852.5	1882.0	1922.5	1955.9	1994.9	2017.9	2040.1	2038.1	2033.2	2008.9
60°	1646.4	1664.7	1681.1	1704.6	1723.1	1745.1	1755.7	1767.0	1763.3	1755.1	1733.5
62.5°	1513.1	1524.5	1533.9	1549.0	1560.2	1573.9	1579.5	1584.3	1579.5	1571.7	1552.6
65°	1381.4	1388.8	1394.8	1406.2	1414.1	1425.9	1430.5	1435.0	1430.6	1424.6	1410.0
67.5°	1262.8	1263.5	1262.9	1267.6	1270.0	1277.1	1279.1	1282.4	1277.4	1272.1	1259.8
70°	1172.8	1170.9	1168.7	1170.5	1170.9	1174.3	1174.9	1174.3	1168.3	1159.2	1145.7
72.5°	1102.4	1101.4	1099.7	1101.3	1101.3	1104.4	1103.3	1101.9	1094.3	1085.6	1072.3
75°	1012.0	1011.2	1007.9	1007.9	1005.2	1006.2	1002.5	1000.4	992.0	984.7	972.8
77.5°	906.1	904.4	899.5	897.6	892.2	890.0	883.1	879.7	871.2	865.2	855.1
80°	788.0	786.1	779.8	776.2	767.8	762.4	752.2	746.4	736.7	730.9	721.0
82.5°	651.3	652.1	645.6	641.3	629.1	619.8	606.2	598.9	588.1	582.5	572.3
85°	463.2	456.6	460.1	459.9	452.2	444.1	433.1	425.4	416.4	410.9	403.8
87.5°	254.1	255.6	253.8	252.3	246.9	242.8	234.1	229.7	223.0	219.8	214.4
90°	107.1	105.0	96.7	94.7	86.6	82.4	73.1	69.8	61.3	59.4	54.0
92.5°	86.3	81.5	77.0	72.0	67.6	62.9	58.1	53.4	48.6	46.8	45.5
95°	108.4	101.7	94.9	88.0	81.2	74.3	67.6	60.7	53.9	52.5	51.1
97.5°	122.2	114.2	106.1	98.2	90.2	82.1	74.1	66.1	57.9	57.1	56.2
100°	215.1	196.8	178.1	159.6	141.1	122.5	104.1	85.5	67.1	66.1	64.9
102.5°	488.0	443.1	398.2	353.3	308.5	263.4	218.5	173.4	128.5	122.0	115.5
105°	865.6	797.4	729.7	661.6	593.5	525.4	457.4	389.1	321.1	299.3	277.4
107.5°	1138.0	1073.9	1010.2	946.3	882.3	818.5	754.4	690.3	626.3	587.9	549.5
110°	1261.9	1211.1	1160.7	1110.0	1059.3	1008.5	957.8	907.1	856.3	823.1	790.3



TEST NUMBER: P1444838
 CATALOG NUMBER: EHBR1-48-UNV-TA-L940-UPL30

CANDELA DISTRIBUTION (continued):

	137.5°	140°	142.5°	145°	147.5°	150°	152.5°	155°	157.5°	160°	162.5°
112.5°	1247.8	1210.7	1173.9	1136.6	1099.7	1062.4	1025.5	988.2	950.9	931.0	910.9
115°	1129.6	1107.4	1085.3	1063.0	1040.9	1018.7	996.4	973.9	951.5	941.1	930.5
117.5°	989.1	977.9	966.8	955.6	944.4	933.0	921.8	910.4	899.0	895.6	892.0
120°	846.2	843.0	839.7	836.5	833.4	830.2	826.8	823.5	820.0	820.8	821.5
122.5°	727.4	729.0	730.9	732.3	734.1	735.5	737.4	738.6	740.2	743.3	746.4
125°	644.3	648.0	651.8	655.4	659.0	662.6	666.4	669.8	673.5	676.5	679.8
127.5°	585.4	589.5	593.7	597.7	602.0	606.0	610.1	614.0	618.1	621.0	624.1
130°	545.1	548.6	552.5	555.9	559.6	563.2	566.7	570.4	574.0	576.4	578.9
132.5°	516.4	519.8	523.2	526.3	529.7	532.9	536.3	539.5	543.1	544.8	547.0
135°	499.0	501.3	504.0	506.4	509.3	511.7	514.4	517.1	519.9	521.3	522.9
137.5°	483.2	485.4	487.7	489.7	492.1	494.1	496.6	498.8	501.4	502.2	503.5
140°	469.9	472.1	474.3	476.5	479.0	481.1	483.8	486.1	488.7	489.7	490.9
142.5°	460.3	462.0	463.8	465.5	467.6	469.4	471.4	473.6	475.8	476.8	477.8
145°	449.7	451.7	453.8	455.8	457.8	460.0	462.6	464.9	467.4	468.1	469.1
147.5°	442.8	444.5	446.4	448.1	450.1	451.8	454.1	456.2	458.5	459.2	460.0
150°	434.6	436.3	438.2	439.9	442.0	444.0	446.4	448.5	451.2	452.1	453.1
152.5°	427.3	429.0	431.0	433.1	435.4	437.6	439.9	442.3	444.9	445.7	446.7
155°	421.5	423.2	425.3	427.3	429.6	431.5	434.0	436.2	438.6	439.7	440.7
157.5°	418.8	420.3	422.2	424.2	426.0	428.0	430.3	432.2	434.4	435.3	436.1
160°	417.7	419.2	421.0	422.8	424.6	426.3	428.2	430.0	431.8	432.7	433.6
162.5°	417.4	419.1	420.8	422.3	424.2	425.9	427.8	429.5	431.4	432.0	432.8
165°	418.7	420.0	421.3	422.5	423.9	425.0	426.5	427.8	429.3	430.0	431.0
167.5°	423.8	424.6	425.5	426.5	427.6	428.7	429.9	430.8	432.1	432.8	433.6
170°	426.1	426.9	427.7	428.7	429.6	430.5	431.5	432.3	433.6	434.1	434.9
172.5°	429.4	429.8	430.5	431.0	431.6	432.2	432.8	433.6	434.2	435.0	435.6
175°	433.3	433.5	433.9	434.1	434.2	434.6	435.1	435.5	435.8	436.4	436.8
177.5°	437.5	437.7	437.9	438.1	438.4	438.6	438.9	439.1	439.5	440.0	440.6
180°	439.1	439.1	439.1	439.1	439.1	439.1	439.1	439.1	439.1	439.1	439.1



TEST NUMBER: P1444838
 CATALOG NUMBER: EHBR1-48-UNV-TA-L940-UPL30

CANDELA DISTRIBUTION (continued):

	165°	167.5°	170°	172.5°	175°	177.5°	180°	182.5°	185°	187.5°	190°
0°	38129.9	38129.9	38129.9	38129.9	38129.9	38129.9	38129.9	38129.9	38129.9	38129.9	38129.9
2.5°	38003.3	38002.8	38001.6	37999.9	37998.2	37999.2	38000.9	38005.3	38012.9	38023.9	38038.3
5°	37869.9	37877.6	37882.0	37882.6	37878.7	37876.2	37880.0	37890.4	37911.5	37946.8	37994.6
7.5°	37730.0	37739.6	37754.3	37765.4	37767.4	37764.7	37765.4	37781.7	37820.6	37889.4	37985.9
10°	37580.6	37552.2	37567.2	37594.6	37616.4	37620.3	37623.0	37642.4	37699.2	37803.2	37958.2
12.5°	37442.7	37352.8	37335.4	37360.2	37393.3	37403.8	37400.9	37409.2	37475.8	37613.4	37829.5
15°	37261.3	37092.1	37034.3	37040.6	37081.5	37096.2	37085.5	37069.1	37133.9	37302.0	37581.7
17.5°	36967.6	36694.9	36588.6	36584.0	36631.7	36644.4	36618.1	36567.3	36631.2	36840.8	37188.0
20°	36521.2	36118.6	35918.5	35886.7	35938.6	35923.4	35871.1	35794.1	35878.0	36133.0	36545.9
22.5°	35718.6	35208.6	34866.6	34756.4	34818.5	34777.1	34700.6	34602.4	34714.0	35003.6	35463.5
25°	34407.3	33817.9	33349.8	33087.3	33136.8	33062.5	32979.3	32860.4	32993.3	33325.8	33832.0
27.5°	32479.8	31798.9	31219.0	30784.3	30800.2	30703.0	30607.2	30453.2	30619.2	31012.8	31583.7
30°	29916.6	29128.7	28422.5	27831.8	27779.0	27684.7	27586.5	27384.4	27592.2	28063.3	28730.5
32.5°	26697.8	25823.0	25007.0	24260.1	24119.2	24027.2	23939.8	23707.1	23979.2	24528.5	25294.9
35°	22933.4	22001.6	21116.9	20263.9	20030.4	19938.4	19861.9	19639.1	19978.6	20576.3	21404.1
37.5°	18801.5	17849.7	16971.2	16096.5	15766.7	15641.9	15586.3	15440.3	15832.0	16423.2	17254.4
40°	14559.8	13674.7	12887.2	12114.6	11738.5	11547.7	11518.5	11491.9	11870.6	12383.5	13138.0
42.5°	10591.6	9877.6	9270.3	8679.8	8339.1	8078.4	8078.2	8157.4	8498.2	8882.4	9464.2
45°	7326.6	6847.4	6460.5	6065.9	6171.3	5651.5	5956.9	5800.2	5968.7	6216.4	6594.7
47.5°	5036.3	4774.7	4562.2	4341.7	4181.0	4027.6	4041.0	4140.0	4298.6	4445.6	4642.5
50°	3670.6	3537.4	3429.1	3314.7	3234.7	3166.9	3170.9	3213.8	3297.1	3374.6	3477.6
52.5°	2876.2	2802.7	2743.9	2680.6	2638.6	2605.0	2606.8	2627.6	2672.7	2716.9	2775.9
55°	2370.7	2361.8	2285.3	2228.5	2206.9	2184.3	2188.4	2196.5	2227.3	2253.1	2292.2
57.5°	1986.5	1952.3	1929.3	1899.4	1885.7	1869.9	1873.4	1876.5	1897.0	1914.3	1942.5
60°	1715.4	1691.1	1674.8	1654.5	1645.5	1635.4	1637.6	1639.5	1652.6	1664.0	1684.1
62.5°	1535.3	1513.5	1499.3	1483.6	1477.3	1470.5	1472.1	1472.7	1480.9	1489.1	1504.4
65°	1397.0	1379.8	1368.0	1354.5	1347.8	1340.8	1341.5	1341.5	1348.5	1354.5	1366.0
67.5°	1250.9	1237.9	1230.2	1219.5	1215.1	1207.8	1207.7	1205.4	1209.9	1212.4	1220.1
70°	1133.6	1120.5	1110.7	1100.4	1094.8	1088.4	1088.5	1088.7	1093.9	1099.4	1109.5
72.5°	1061.1	1048.6	1039.9	1030.9	1025.6	1020.2	1019.1	1018.6	1022.4	1025.4	1032.0
75°	965.2	955.1	950.1	941.6	937.3	931.3	930.2	927.5	929.3	929.9	934.8
77.5°	848.7	839.2	835.1	826.6	823.0	816.1	815.6	812.4	813.8	812.9	816.7
80°	716.1	707.4	705.2	698.1	696.4	690.1	689.0	685.2	686.3	683.4	684.9
82.5°	567.9	560.0	558.3	551.8	551.8	546.0	545.8	540.0	540.0	535.0	527.1
85°	400.0	394.3	391.9	386.5	385.0	380.3	377.9	372.4	370.4	366.9	365.8
87.5°	211.1	207.5	204.2	201.7	196.9	188.7	187.9	182.1	182.6	178.5	178.8
90°	52.7	47.7	46.7	42.0	40.6	37.3	36.1	36.4	37.4	37.8	38.8
92.5°	43.9	42.3	40.8	39.2	37.6	36.1	34.5	36.1	37.6	39.2	40.8
95°	49.7	48.4	47.0	45.6	44.2	42.8	41.4	42.8	44.2	45.7	47.1
97.5°	55.3	54.4	53.6	52.6	51.8	50.9	50.0	51.1	52.0	52.8	53.8
100°	63.9	62.9	61.8	60.7	59.7	58.6	57.6	58.9	60.0	61.0	62.0
102.5°	109.1	102.6	96.1	89.6	83.1	76.7	70.2	76.7	83.1	89.8	96.3
105°	255.5	233.7	211.8	189.9	168.0	146.0	124.1	146.1	168.1	190.0	212.0
107.5°	510.8	472.5	434.0	395.5	356.7	318.3	279.7	318.4	357.0	395.7	434.2
110°	757.0	723.7	690.6	657.4	624.0	590.9	557.6	591.0	624.3	657.6	691.0



TEST NUMBER: P1444838
 CATALOG NUMBER: EHBR1-48-UNV-TA-L940-UPL30

CANDELA DISTRIBUTION (continued):

	165°	167.5°	170°	172.5°	175°	177.5°	180°	182.5°	185°	187.5°	190°
112.5°	890.7	870.7	850.4	830.5	810.2	790.0	769.7	790.3	810.7	831.1	851.3
115°	920.2	909.6	899.1	888.5	877.8	867.2	856.3	867.6	878.5	889.3	900.2
117.5°	888.3	885.0	881.2	877.7	874.0	870.3	866.4	870.5	874.6	878.9	882.6
120°	821.9	822.7	823.3	823.8	824.3	824.7	825.0	825.3	825.3	825.3	825.2
122.5°	749.4	752.6	755.4	758.5	761.2	764.1	766.7	764.7	762.4	760.2	757.6
125°	682.9	686.3	689.3	692.4	695.3	698.4	700.9	699.1	696.9	694.5	692.0
127.5°	627.1	630.0	632.8	635.8	638.4	640.9	643.3	641.7	639.9	637.9	635.7
130°	581.3	583.9	585.9	588.2	590.3	592.2	593.8	593.0	591.8	590.8	589.2
132.5°	548.7	551.0	552.7	554.6	555.9	557.7	558.6	558.5	557.8	557.3	556.1
135°	524.5	525.9	527.2	528.8	529.8	530.9	531.5	531.9	531.7	531.5	530.9
137.5°	504.5	505.6	506.3	507.2	507.8	508.3	508.5	509.3	509.7	510.3	510.2
140°	491.8	493.0	494.0	494.7	495.4	496.2	496.3	497.2	497.5	497.9	497.8
142.5°	479.0	480.0	480.9	481.8	482.4	483.0	483.2	484.0	484.4	484.6	484.7
145°	469.9	470.6	471.4	472.2	472.4	472.8	472.6	473.8	474.3	474.9	475.2
147.5°	460.7	461.6	462.1	462.7	462.9	463.4	463.4	464.2	464.8	465.4	465.8
150°	454.1	455.1	455.9	456.8	457.4	458.0	458.1	458.8	459.1	459.5	459.5
152.5°	447.6	448.4	449.2	449.9	450.5	451.0	451.2	451.8	452.4	452.9	453.1
155°	441.6	442.5	443.4	444.2	444.8	445.5	446.1	446.6	447.1	447.4	447.7
157.5°	436.9	438.0	438.6	439.5	440.0	440.9	441.5	442.2	442.6	443.2	443.5
160°	434.2	435.3	435.8	436.7	437.4	438.1	438.6	439.4	439.9	440.3	440.9
162.5°	433.6	434.4	434.9	435.7	436.4	437.1	437.7	438.3	439.0	439.6	439.9
165°	431.9	432.7	433.4	434.3	435.2	436.1	436.8	437.2	437.5	437.9	438.1
167.5°	434.3	435.2	435.7	436.6	437.2	438.2	438.9	439.3	439.5	439.7	439.9
170°	435.5	436.3	436.9	437.5	438.3	439.1	439.6	439.7	440.0	440.2	440.5
172.5°	436.2	437.1	437.8	438.7	439.3	440.1	440.8	440.9	440.9	440.9	440.7
175°	437.3	438.2	438.6	439.3	439.7	440.4	441.0	440.8	440.9	440.7	440.6
177.5°	441.3	442.2	442.7	443.3	444.0	444.5	445.1	444.6	444.3	443.8	443.3
180°	439.1	439.1	439.1	439.1	439.1	439.1	439.1	439.1	439.1	439.1	439.1



TEST NUMBER: P1444838
 CATALOG NUMBER: EHBR1-48-UNV-TA-L940-UPL30

CANDELA DISTRIBUTION (continued):

	192.5°	195°	197.5°	200°	202.5°	205°	207.5°	210°	212.5°	215°	217.5°
0°	38129.9	38129.9	38129.9	38129.9	38129.9	38129.9	38129.9	38129.9	38129.9	38129.9	38129.9
2.5°	38058.7	38077.8	38106.9	38133.3	38173.1	38204.4	38251.4	38287.2	38340.3	38374.9	38432.6
5°	38062.1	38136.5	38234.5	38330.0	38444.9	38549.2	38678.8	38789.2	38919.4	39025.7	39158.9
7.5°	38115.9	38259.5	38431.6	38605.0	38801.2	38984.6	39191.3	39378.4	39582.9	39756.0	39945.0
10°	38155.6	38377.1	38630.8	38886.0	39154.5	39404.1	39656.1	39873.9	40077.3	40244.9	40392.8
12.5°	38101.8	38406.9	38732.3	39046.7	39345.3	39603.7	39820.5	39987.9	40103.5	40182.0	40200.3
15°	37918.8	38285.9	38639.8	38952.8	39200.7	39391.8	39490.8	39537.1	39487.4	39404.9	39223.4
17.5°	37577.0	37964.2	38280.6	38527.5	38658.4	38710.3	38628.4	38485.7	38207.1	37897.8	37451.0
20°	36950.2	37311.0	37540.5	37675.2	37640.2	37510.6	37201.1	36824.9	36268.5	35675.6	34893.1
22.5°	35850.9	36166.4	36288.6	36298.6	36084.8	35760.4	35202.1	34557.0	33679.3	32766.7	31644.6
25°	34200.8	34477.1	34496.4	34387.9	33996.6	33470.8	32651.2	31738.5	30545.8	29329.9	27923.7
27.5°	31963.0	32227.9	32163.1	31960.6	31417.3	30713.7	29664.3	28485.2	27014.8	25578.8	24023.2
30°	29149.8	29433.2	29357.0	29097.2	28451.2	27619.6	26384.8	25014.9	23382.3	21848.6	20272.2
32.5°	25783.3	26141.5	26089.0	25842.1	25167.8	24277.8	22938.1	21485.1	19814.9	18303.4	16770.0
35°	21956.8	22391.7	22414.3	22252.8	21626.9	20747.3	19424.3	18017.9	16418.1	14992.0	13575.5
37.5°	17834.2	18338.4	18442.0	18398.5	17879.8	17103.2	15897.8	14636.2	13218.9	11969.0	10757.5
40°	13688.8	14199.2	14376.3	14428.9	14046.0	13444.6	12455.3	11437.0	10281.5	9268.8	8306.8
42.5°	9908.3	10360.8	10532.0	10639.7	10400.7	9999.6	9278.0	8538.4	7692.0	6961.5	6261.2
45°	6881.6	7201.6	7331.8	7440.2	7310.1	7083.8	6628.0	6165.5	5606.7	5129.5	4677.5
47.5°	4811.3	4987.8	5073.7	5126.3	5075.9	4957.8	4709.8	4441.9	4126.5	3847.6	3579.4
50°	3566.2	3660.2	3705.2	3735.5	3698.7	3633.1	3499.0	3353.1	3179.9	3021.9	2867.4
52.5°	2826.1	2880.0	2906.7	2923.0	2902.0	2861.9	2783.8	2697.3	2593.4	2495.8	2444.5
55°	2380.8	2378.0	2439.8	2410.0	2439.8	2373.3	2359.2	2264.2	2177.9	2117.2	2051.5
57.5°	1963.4	1991.4	2003.2	2016.5	2008.0	1995.8	1962.6	1928.5	1883.0	1845.0	1804.4
60°	1699.6	1722.6	1735.7	1748.8	1748.0	1743.4	1724.2	1703.8	1675.4	1652.6	1628.1
62.5°	1517.8	1537.8	1550.6	1563.2	1564.3	1562.5	1547.9	1533.9	1514.5	1500.2	1483.3
65°	1374.8	1388.8	1397.6	1407.6	1407.1	1404.4	1391.2	1379.5	1363.6	1353.7	1341.2
67.5°	1225.2	1235.8	1242.5	1252.0	1253.9	1254.5	1247.2	1241.7	1234.0	1231.2	1226.9
70°	1118.8	1131.7	1142.6	1154.5	1161.0	1164.2	1161.0	1158.2	1153.7	1151.7	1148.4
72.5°	1038.2	1049.1	1057.6	1068.5	1074.6	1078.9	1076.5	1074.9	1071.0	1070.5	1068.2
75°	938.2	945.7	950.5	958.7	961.9	966.0	964.2	965.2	963.9	967.0	966.9
77.5°	817.9	823.5	825.7	831.6	832.2	837.2	838.3	844.1	848.2	857.2	862.1
80°	682.5	686.1	686.1	692.1	694.8	703.2	707.1	716.6	721.0	729.0	729.8
82.5°	530.2	526.1	530.2	527.7	535.4	544.7	546.0	554.0	555.9	561.0	557.0
85°	362.5	362.2	359.0	359.5	357.1	358.2	356.8	358.4	356.9	357.1	353.5
87.5°	173.7	175.2	171.4	172.7	169.0	170.7	167.4	170.0	166.2	166.8	161.1
90°	39.5	40.4	41.2	42.2	43.7	46.5	49.5	52.4	55.8	58.5	61.7
92.5°	42.3	44.1	45.7	47.2	48.8	53.6	58.3	63.1	67.9	72.5	77.2
95°	48.5	49.9	51.3	53.0	54.4	61.2	68.1	74.9	81.8	88.6	95.5
97.5°	54.9	55.8	56.6	57.6	58.5	66.6	74.6	82.7	90.8	98.8	106.9
100°	63.3	64.3	65.3	66.6	67.6	86.3	104.8	123.4	142.0	160.4	179.0
102.5°	102.9	109.4	115.9	122.6	129.1	174.2	219.3	264.3	309.1	354.2	399.2
105°	234.0	255.9	278.1	300.1	322.0	390.2	458.5	526.7	594.6	662.7	730.9
107.5°	472.9	511.5	550.3	588.9	627.5	691.7	755.7	819.8	883.9	947.9	1011.8
110°	724.5	757.6	791.2	824.5	857.9	908.6	959.7	1010.4	1061.3	1112.1	1162.9



TEST NUMBER: P1444838
 CATALOG NUMBER: EHBR1-48-UNV-TA-L940-UPL30

CANDELA DISTRIBUTION (continued):

	192.5°	195°	197.5°	200°	202.5°	205°	207.5°	210°	212.5°	215°	217.5°
112.5°	871.8	892.1	912.4	932.5	952.8	990.1	1027.6	1064.8	1102.2	1139.1	1176.4
115°	911.1	921.6	932.4	943.0	953.9	976.5	998.7	1021.3	1043.8	1066.0	1088.5
117.5°	886.6	890.5	894.4	897.9	901.7	913.3	924.8	936.2	947.8	959.2	970.6
120°	825.0	824.6	824.3	823.8	823.5	826.7	830.5	833.9	837.5	840.7	844.1
122.5°	755.3	752.4	749.9	747.0	744.3	742.7	741.5	739.9	738.8	737.2	735.8
125°	689.4	686.5	683.8	680.8	677.9	674.5	671.3	667.6	664.2	660.7	657.3
127.5°	633.7	631.0	628.7	626.0	623.3	619.3	615.4	611.5	607.8	603.6	599.8
130°	587.7	585.7	584.0	581.6	579.9	576.2	573.0	569.4	566.0	562.5	559.1
132.5°	555.2	553.8	552.5	550.6	549.3	546.0	543.2	539.8	536.7	533.6	530.6
135°	530.5	529.5	528.8	527.7	526.7	524.0	521.7	519.2	516.8	514.4	511.9
137.5°	510.3	509.8	509.4	509.0	508.4	506.3	504.3	502.2	500.3	498.1	496.2
140°	497.8	497.5	497.2	496.7	496.2	494.1	492.0	489.8	487.7	485.4	483.3
142.5°	484.6	484.5	484.2	483.7	483.4	481.6	480.1	478.4	476.6	475.0	473.3
145°	475.2	475.2	475.4	475.0	475.1	473.1	471.3	469.2	467.5	465.5	463.7
147.5°	466.1	466.1	466.4	466.3	466.6	464.8	463.4	461.7	460.4	458.6	457.3
150°	459.6	459.7	459.7	459.5	459.4	457.7	456.3	454.6	453.2	451.5	450.2
152.5°	453.2	453.3	453.5	453.6	453.8	452.2	450.7	449.1	447.5	445.7	444.2
155°	447.9	448.0	448.2	448.2	448.2	446.8	445.4	443.8	442.4	440.9	439.6
157.5°	443.7	444.0	444.3	444.5	444.6	443.4	442.2	440.9	439.6	438.3	437.1
160°	441.2	441.6	441.9	442.1	442.3	441.3	440.5	439.2	438.4	437.0	435.8
162.5°	440.4	440.8	441.0	441.2	441.5	440.5	439.7	438.6	437.6	436.3	435.3
165°	438.5	438.5	438.7	438.7	438.8	438.2	437.5	436.8	436.1	435.4	434.6
167.5°	440.3	440.2	440.5	440.5	440.6	440.0	439.9	439.3	438.7	438.2	437.7
170°	440.7	440.8	440.9	440.8	440.9	440.3	440.0	439.5	439.2	438.4	437.9
172.5°	440.7	440.5	440.5	440.4	440.1	439.7	439.6	439.3	439.0	438.6	438.2
175°	440.4	440.1	440.1	439.9	439.6	439.6	439.5	439.4	439.2	439.1	438.9
177.5°	443.1	442.7	442.2	441.8	441.4	441.2	441.1	440.9	441.0	440.9	440.8
180°	439.1	439.1	439.1	439.1	439.1	439.1	439.1	439.1	439.1	439.1	439.1



TEST NUMBER: P1444838
 CATALOG NUMBER: EHBR1-48-UNV-TA-L940-UPL30

CANDELA DISTRIBUTION (continued):

	220°	222.5°	225°	227.5°	230°	232.5°	235°	237.5°	240°	242.5°	245°
0°	38129.9	38129.9	38129.9	38129.9	38129.9	38129.9	38129.9	38129.9	38129.9	38129.9	38129.9
2.5°	38468.4	38230.8	38199.4	38216.1	38255.8	38270.5	38313.4	38325.1	38368.1	38378.8	38420.1
5°	39262.2	38948.1	38963.8	39039.3	39153.6	39221.7	39334.1	39392.9	39500.1	39548.8	39645.8
7.5°	40099.1	39852.5	39929.4	40056.8	40213.0	40321.2	40456.2	40544.1	40660.5	40732.7	40825.7
10°	40510.1	40442.5	40527.1	40627.4	40716.5	40786.3	40843.5	40889.4	40919.3	40947.4	40959.7
12.5°	40197.3	40301.9	40316.3	40306.6	40247.5	40202.5	40101.1	40032.3	39910.0	39835.6	39690.2
15°	39038.0	39267.9	39140.6	38947.8	38665.8	38430.7	38098.5	37851.3	37505.4	37270.9	36923.8
17.5°	37003.4	37293.6	36961.8	36515.8	35948.5	35463.0	34858.6	34378.8	33777.8	33340.8	32779.9
20°	34139.0	34410.2	33818.5	33079.2	32201.5	31462.9	30591.8	29896.8	29087.4	28485.2	27758.6
22.5°	30572.7	30765.9	29932.3	28935.6	27817.4	26894.6	25853.2	25019.9	24096.2	23407.8	22633.0
25°	26627.3	26679.3	25679.4	24531.2	23284.9	22247.8	21135.9	20259.9	19317.8	18620.1	17859.6
27.5°	22645.0	22568.6	21487.8	20270.2	18959.3	17881.4	16796.8	15976.0	15150.9	14522.4	13867.3
30°	18886.3	18701.2	17579.0	16327.6	15055.0	14088.9	13188.6	12529.3	11872.9	11374.4	10848.5
32.5°	15439.5	15178.4	14086.0	12913.5	11841.3	11095.7	10428.1	9929.3	9399.2	8978.1	8536.8
35°	12386.6	12108.3	11140.6	10146.6	9335.1	8785.5	8260.8	7851.5	7401.5	7046.2	6662.9
37.5°	9766.5	9538.4	8727.8	7945.6	7331.8	6905.9	6476.0	6141.5	5769.6	5613.3	5203.7
40°	7539.7	7380.3	6746.5	6169.9	5708.9	5508.8	5072.4	4760.1	4482.1	4252.9	4030.9
42.5°	5881.1	5824.6	5207.8	4758.2	4433.6	4181.5	3938.3	3740.8	3548.6	3390.7	3241.5
45°	4315.8	4271.2	3997.3	3737.8	3516.6	3340.4	3176.1	3040.2	2914.6	2810.5	2715.7
47.5°	3360.7	3346.5	3188.7	3027.8	2888.5	2775.3	2668.6	2578.4	2495.0	2425.5	2402.9
50°	2733.4	2731.6	2639.1	2539.7	2440.5	2375.0	2306.9	2253.7	2200.1	2158.4	2114.4
52.5°	2322.5	2312.4	2250.0	2188.7	2129.7	2086.8	2043.3	2009.2	1973.7	1948.0	1920.6
55°	1999.5	2010.0	1973.9	1937.3	1900.4	1873.7	1843.2	1820.7	1796.4	1780.1	1763.6
57.5°	1775.1	1789.0	1770.1	1749.4	1726.9	1709.3	1688.2	1672.8	1656.5	1646.1	1636.5
60°	1611.8	1627.1	1619.5	1609.0	1595.2	1584.7	1571.3	1562.6	1552.2	1546.4	1541.0
62.5°	1473.3	1492.4	1489.7	1484.8	1475.9	1470.0	1462.8	1459.0	1452.0	1449.5	1446.9
65°	1335.1	1356.6	1356.2	1353.8	1348.8	1347.2	1342.6	1341.8	1338.2	1339.6	1339.3
67.5°	1226.4	1245.1	1249.2	1252.2	1252.0	1253.2	1252.8	1254.6	1254.6	1257.3	1258.9
70°	1148.1	1161.0	1164.2	1167.3	1168.1	1170.6	1170.6	1172.2	1171.7	1174.1	1174.3
72.5°	1068.8	1085.8	1089.0	1091.5	1091.5	1093.9	1092.6	1092.3	1088.8	1088.2	1085.7
75°	970.1	992.0	996.9	999.9	1000.4	1002.5	999.5	997.7	992.0	989.8	985.8
77.5°	867.1	889.8	893.3	894.4	892.5	893.0	886.7	882.5	875.3	872.3	868.5
80°	733.0	766.5	769.2	767.0	761.8	761.0	754.9	750.9	742.3	739.4	736.1
82.5°	557.8	597.1	602.6	605.0	600.7	601.7	595.9	593.6	585.7	584.3	579.1
85°	352.2	391.5	397.9	397.0	392.7	391.8	388.3	389.4	388.8	390.9	392.0
87.5°	161.8	199.8	209.0	206.1	205.6	202.9	196.9	199.1	202.8	205.1	205.3
90°	64.7	79.2	81.9	80.4	75.2	73.1	68.2	66.7	62.3	60.8	56.6
92.5°	82.0	86.7	91.5	87.3	83.1	78.8	74.6	70.2	66.2	61.8	57.8
95°	102.3	108.9	115.7	110.1	104.3	98.7	93.1	87.5	81.9	76.2	70.6
97.5°	115.0	122.7	130.6	125.0	119.3	113.7	108.1	102.4	96.8	91.0	85.3
100°	197.6	215.6	234.0	218.1	202.0	186.0	170.1	153.9	138.0	122.0	105.9
102.5°	444.0	488.7	533.6	493.0	452.6	412.1	371.7	331.3	291.0	250.3	210.0
105°	798.8	866.4	934.3	872.3	810.6	748.9	687.3	625.5	563.8	502.1	440.5
107.5°	1075.8	1138.8	1202.5	1146.6	1090.7	1035.0	979.0	923.2	867.3	811.5	755.8
110°	1213.5	1263.0	1313.5	1275.8	1238.3	1200.6	1163.2	1125.4	1088.0	1050.6	1013.2



TEST NUMBER: P1444838
 CATALOG NUMBER: EHBR1-48-UNV-TA-L940-UPL30

CANDELA DISTRIBUTION (continued):

	220°	222.5°	225°	227.5°	230°	232.5°	235°	237.5°	240°	242.5°	245°
112.5°	1213.5	1249.1	1285.8	1263.4	1241.5	1219.3	1197.4	1175.2	1153.4	1131.2	1109.6
115°	1110.7	1131.0	1152.8	1143.8	1134.9	1126.1	1117.0	1108.4	1099.4	1090.7	1082.1
117.5°	982.0	990.9	1001.6	999.6	997.8	995.7	994.0	992.0	990.4	988.8	987.1
120°	847.4	848.2	850.8	851.4	852.4	853.0	853.9	854.6	855.5	856.5	857.5
122.5°	734.2	729.9	727.5	728.2	728.7	729.2	729.9	730.6	731.3	732.1	733.0
125°	653.7	647.0	642.6	640.6	638.8	636.8	634.8	632.9	631.2	629.3	627.6
127.5°	595.8	588.4	583.7	579.8	575.9	571.8	567.8	563.8	560.1	556.0	552.4
130°	555.7	548.6	544.1	539.1	534.6	529.5	524.8	520.0	515.0	510.2	505.5
132.5°	527.2	520.2	516.1	511.5	507.0	502.3	497.7	492.8	488.2	483.3	478.9
135°	509.4	502.9	499.5	495.2	491.2	486.8	482.5	478.1	474.0	469.5	465.5
137.5°	494.1	487.5	484.6	481.2	477.8	474.3	471.0	467.4	463.9	460.1	456.8
140°	481.2	474.4	471.4	469.4	467.4	465.1	463.1	460.9	458.8	456.7	454.5
142.5°	471.6	465.0	462.3	460.9	459.8	458.2	457.2	455.6	454.3	452.5	451.2
145°	461.8	454.5	451.7	451.2	451.1	450.6	450.4	450.0	449.7	449.1	448.8
147.5°	455.5	448.0	445.1	445.3	445.3	445.2	445.5	445.2	445.5	445.4	445.4
150°	448.3	439.8	436.6	437.0	437.2	437.7	438.1	438.3	438.9	439.2	439.6
152.5°	442.3	432.3	428.6	429.0	429.7	430.0	430.5	431.1	431.7	432.4	432.8
155°	437.7	426.9	422.8	422.7	423.0	423.1	423.3	423.7	424.1	424.4	424.8
157.5°	435.5	424.1	420.2	419.8	419.9	419.9	420.0	420.1	420.3	420.5	420.9
160°	434.7	423.2	419.4	419.1	419.1	419.0	418.9	418.8	419.0	419.1	419.5
162.5°	433.9	422.8	419.1	418.7	418.5	418.3	418.3	418.1	418.3	418.2	418.6
165°	433.7	423.9	420.5	420.4	420.5	420.3	420.4	420.5	420.7	420.8	421.2
167.5°	436.8	428.2	425.5	425.0	424.6	424.2	424.2	423.6	423.6	423.3	423.3
170°	437.1	430.3	427.9	427.8	428.0	427.9	427.8	427.8	427.8	427.7	427.9
172.5°	437.9	432.8	431.1	431.3	431.6	431.8	432.2	432.4	432.7	433.0	433.4
175°	438.7	435.7	435.0	434.9	435.1	435.3	435.5	435.5	435.7	435.9	436.4
177.5°	440.8	439.8	439.4	439.4	439.4	439.4	439.4	439.4	439.4	439.6	439.6
180°	439.1	439.1	439.1	439.1	439.1	439.1	439.1	439.1	439.1	439.1	439.1



TEST NUMBER: P1444838
 CATALOG NUMBER: EHBR1-48-UNV-TA-L940-UPL30

CANDELA DISTRIBUTION (continued):

	247.5°	250°	252.5°	255°	257.5°	260°	262.5°	265°	267.5°	270°	272.5°
0°	38129.9	38129.9	38129.9	38129.9	38129.9	38129.9	38129.9	38129.9	38129.9	38129.9	38129.9
2.5°	38428.0	38472.8	38469.3	38511.2	38509.1	38548.5	38540.6	38574.6	38566.9	38595.9	38578.9
5°	39688.5	39773.7	39801.8	39878.7	39894.6	39963.5	39964.9	40019.6	40013.0	40055.7	40033.0
7.5°	40880.9	40960.4	40998.2	41057.9	41087.8	41137.2	41156.6	41197.3	41207.1	41231.1	41230.3
10°	40981.5	40981.2	40999.9	40991.6	41008.2	40998.6	41019.0	41011.6	41041.7	41034.0	41056.7
12.5°	39627.5	39493.0	39444.0	39323.3	39296.9	39193.3	39200.7	39134.2	39166.3	39125.5	39195.0
15°	36717.4	36405.6	36251.5	35980.5	35895.5	35681.2	35663.9	35521.5	35560.0	35485.5	35594.4
17.5°	32417.0	31926.2	31656.9	31261.1	31103.9	30800.9	30740.2	30557.0	30585.5	30493.1	30624.6
20°	27289.9	26696.8	26357.0	25899.4	25695.2	25334.0	25238.1	25033.2	25058.9	24967.1	25115.8
22.5°	22104.2	21483.4	21099.9	20620.1	20359.4	20019.7	19917.7	19711.9	19723.6	19637.4	19780.4
25°	17338.8	16743.6	16371.3	15935.5	15709.3	15397.9	15290.7	15105.9	15116.3	15045.2	15173.6
27.5°	13412.8	12924.4	12613.0	12247.7	12044.9	11788.9	11684.4	11528.9	11528.6	11476.4	11583.6
30°	10481.4	10073.9	9794.2	9476.1	9285.6	9054.6	8953.7	8814.6	8808.5	8771.5	8856.7
32.5°	8206.7	7844.2	7589.1	7309.2	7138.2	6939.9	6844.4	6732.6	6722.5	6688.9	6758.9
35°	6379.6	6074.4	5855.0	5619.3	5636.7	5344.2	5392.8	5165.6	5104.0	5090.5	5142.6
37.5°	4930.7	4694.3	4516.2	4339.6	4220.1	4096.4	4029.8	3970.1	3963.3	3957.5	3994.0
40°	3859.4	3694.0	3564.4	3443.3	3361.0	3285.5	3243.9	3211.1	3203.3	3198.9	3221.0
42.5°	3123.6	3012.0	2928.4	2854.6	2804.5	2763.5	2740.6	2722.5	2716.3	2716.5	2729.4
45°	2639.1	2571.3	2517.5	2471.6	2439.6	2453.7	2412.4	2434.0	2405.4	2434.9	2415.5
47.5°	2324.1	2266.4	2233.1	2200.5	2181.2	2165.6	2166.2	2166.4	2172.6	2173.5	2179.9
50°	2081.0	2047.7	2024.5	2003.7	1993.6	1985.4	1988.3	1990.4	1996.3	1996.8	2001.5
52.5°	1901.1	1879.2	1865.2	1852.3	1847.8	1843.2	1845.1	1844.3	1847.0	1845.6	1849.4
55°	1754.7	1744.4	1740.0	1735.2	1735.9	1734.6	1735.5	1730.8	1728.0	1724.5	1727.7
57.5°	1634.6	1633.2	1636.2	1638.1	1643.6	1645.6	1646.9	1641.5	1636.4	1631.8	1634.5
60°	1542.1	1544.3	1551.7	1557.5	1565.4	1569.2	1571.4	1568.3	1564.6	1560.8	1563.1
62.5°	1450.8	1454.3	1463.1	1469.7	1479.3	1484.2	1489.7	1490.0	1491.5	1490.0	1491.6
65°	1344.7	1349.1	1357.0	1362.5	1371.5	1375.9	1381.4	1382.5	1385.5	1384.9	1387.6
67.5°	1264.1	1268.2	1274.8	1280.0	1287.9	1292.5	1297.4	1297.7	1298.8	1298.5	1301.0
70°	1178.3	1180.2	1186.2	1190.5	1198.5	1203.1	1208.8	1210.5	1214.0	1214.6	1217.4
72.5°	1086.7	1085.8	1089.4	1091.3	1097.3	1101.0	1108.2	1112.1	1118.1	1119.7	1121.8
75°	986.9	986.1	990.3	992.0	997.1	1000.8	1008.9	1014.1	1023.2	1027.0	1026.1
77.5°	871.5	873.4	881.3	885.7	892.5	897.2	907.7	916.0	932.9	940.1	932.7
80°	742.3	744.5	752.7	756.8	765.6	771.3	783.0	792.7	807.9	811.2	806.9
82.5°	583.6	584.2	591.5	594.7	606.2	614.6	629.4	637.2	646.5	645.1	644.0
85°	397.9	403.3	412.5	421.7	435.8	449.3	463.4	475.0	466.8	479.6	465.2
87.5°	212.7	212.1	224.5	222.6	242.3	253.8	266.0	271.8	278.3	277.0	277.1
90°	55.6	52.6	52.8	49.5	50.6	47.0	49.1	45.8	48.6	44.5	51.0
92.5°	53.4	51.3	48.8	46.8	44.3	42.2	39.7	37.5	35.1	32.9	35.1
95°	65.0	62.9	60.8	58.6	56.6	54.4	52.4	50.2	48.2	46.0	48.6
97.5°	79.7	78.5	77.3	76.1	74.9	73.6	72.4	71.2	69.9	68.7	70.4
100°	90.0	90.0	90.0	90.0	89.7	89.7	89.7	89.7	89.7	89.7	91.1
102.5°	169.5	165.5	161.5	157.2	153.2	149.2	145.2	141.1	137.0	133.0	139.0
105°	378.7	363.0	347.0	331.3	315.3	299.5	283.7	267.9	252.1	236.4	252.7
107.5°	700.1	671.2	642.3	613.6	584.6	555.8	527.0	498.3	469.5	440.8	466.6
110°	975.7	945.1	914.4	883.9	853.3	822.5	792.1	761.5	731.1	700.5	725.1



TEST NUMBER: P1444838
 CATALOG NUMBER: EHBR1-48-UNV-TA-L940-UPL30

CANDELA DISTRIBUTION (continued):

	247.5°	250°	252.5°	255°	257.5°	260°	262.5°	265°	267.5°	270°	272.5°
112.5°	1087.7	1067.6	1047.7	1028.1	1008.2	988.6	968.8	949.3	929.6	909.9	921.9
115°	1073.3	1063.8	1054.3	1044.9	1035.4	1025.8	1016.4	1007.2	997.9	988.6	989.3
117.5°	985.4	982.0	978.8	975.5	972.3	969.1	966.0	963.0	959.9	957.1	950.4
120°	858.7	859.3	860.0	860.9	861.9	863.1	863.8	865.0	866.2	867.5	858.5
122.5°	734.0	735.8	738.0	740.1	742.3	744.8	747.1	749.7	752.4	755.0	746.1
125°	625.8	627.7	629.7	631.7	633.6	636.2	638.5	641.2	643.7	646.5	638.9
127.5°	548.6	549.0	549.2	550.0	550.5	551.4	552.4	553.5	554.7	556.1	551.3
130°	500.7	499.5	498.1	497.1	495.8	495.2	494.5	494.0	493.5	493.2	491.3
132.5°	474.1	471.8	469.4	467.1	465.0	463.2	461.3	459.9	458.3	457.1	456.4
135°	461.0	457.8	454.8	451.8	449.0	446.5	443.8	441.7	439.6	437.5	438.2
137.5°	453.2	450.3	447.1	444.3	441.3	439.0	436.2	434.0	431.9	429.9	430.9
140°	452.2	449.1	446.1	443.3	440.7	438.1	435.6	433.5	431.1	429.4	430.0
142.5°	449.6	447.1	444.1	441.7	439.1	436.8	434.6	432.7	430.5	428.9	429.6
145°	448.3	446.4	444.2	442.3	440.5	438.8	436.8	435.6	434.2	433.2	433.6
147.5°	445.2	443.9	442.3	440.9	439.3	438.2	436.9	435.9	434.9	434.1	434.3
150°	439.9	439.0	438.0	437.0	436.1	435.4	434.6	434.0	433.3	432.8	432.8
152.5°	433.5	432.7	431.7	431.0	430.2	429.6	428.9	428.6	428.0	427.5	427.5
155°	425.2	424.8	424.5	424.4	424.0	424.0	423.6	423.8	423.5	423.6	423.7
157.5°	421.1	421.2	421.0	421.2	421.2	421.4	421.4	421.8	421.7	422.0	422.3
160°	420.0	419.9	419.7	419.8	419.7	419.6	419.7	419.8	419.9	419.9	420.4
162.5°	418.8	419.1	419.3	419.6	420.0	420.3	420.7	421.3	421.6	422.1	422.6
165°	421.6	421.6	421.5	421.5	421.7	421.8	421.9	422.4	422.5	422.9	423.4
167.5°	423.2	423.5	423.6	423.9	424.3	424.6	424.9	425.6	426.0	426.8	427.3
170°	427.8	427.8	427.8	427.8	427.8	428.1	428.3	428.4	428.6	428.9	429.3
172.5°	433.6	433.6	433.3	433.6	433.3	433.6	433.6	433.8	433.8	434.0	434.1
175°	436.3	436.8	436.9	437.3	437.3	437.4	437.6	437.8	438.0	438.3	438.3
177.5°	439.6	439.6	439.6	439.6	439.6	439.8	439.8	439.8	439.8	439.6	439.8
180°	439.1	439.1	439.1	439.1	439.1	439.1	439.1	439.1	439.1	439.1	439.1



TEST NUMBER: P1444838
 CATALOG NUMBER: EHBR1-48-UNV-TA-L940-UPL30

CANDELA DISTRIBUTION (continued):

	275°	277.5°	280°	282.5°	285°	287.5°	290°	292.5°	295°	297.5°	300°
0°	38129.9	38129.9	38129.9	38129.9	38129.9	38129.9	38129.9	38129.9	38129.9	38129.9	38129.9
2.5°	38607.3	38587.9	38607.7	38587.6	38607.7	38583.6	38599.9	38573.9	38580.6	38553.5	38560.5
5°	40067.1	40036.3	40052.7	40012.7	40016.9	39963.5	39962.5	39900.3	39883.9	39813.1	39782.0
7.5°	41247.5	41237.4	41243.1	41217.3	41214.4	41177.9	41160.6	41109.1	41076.7	41011.6	40967.1
10°	41060.6	41090.7	41098.5	41129.2	41135.5	41165.9	41172.3	41202.7	41209.0	41231.5	41231.7
12.5°	39191.7	39293.9	39318.3	39444.6	39497.7	39642.1	39719.6	39878.7	39973.2	40131.9	40229.4
15°	35591.4	35768.1	35838.6	36085.1	36221.4	36509.1	36690.0	37020.3	37253.5	37604.4	37854.6
17.5°	30636.1	30883.2	30994.7	31328.9	31546.9	31971.6	32277.7	32781.4	33167.1	33727.0	34170.7
20°	25141.2	25415.8	25567.1	25948.4	26205.7	26701.9	27084.0	27703.0	28219.3	28928.7	29535.3
22.5°	19825.2	20086.6	20254.5	20642.5	20932.1	21449.6	21876.7	22530.1	23108.5	23907.9	24635.3
25°	15222.1	15461.5	15613.4	15964.2	16236.3	16711.8	17119.6	17748.0	18314.0	19115.9	19861.7
27.5°	11637.1	11837.6	11984.0	12283.2	12523.1	12926.4	13276.7	13796.1	14283.7	14977.4	15641.6
30°	8909.1	9086.9	9229.3	9489.9	9712.4	10062.0	10370.1	10806.3	11209.8	11761.8	12290.3
32.5°	6808.1	6961.2	7088.1	7316.1	7517.9	7832.7	8110.3	8492.7	8839.1	9307.2	9741.9
35°	5190.8	5492.1	5470.7	5785.2	5835.8	6061.8	6309.4	6643.8	6950.5	7348.6	7718.6
37.5°	4029.0	4113.7	4204.3	4343.4	4489.5	4695.1	4904.3	5312.8	5462.6	5763.5	6069.8
40°	3248.9	3306.2	3366.1	3460.0	3562.4	3707.2	3859.5	4054.4	4254.1	4498.0	4747.2
42.5°	2746.7	2779.1	2817.2	2872.4	2935.5	3027.4	3129.3	3261.4	3400.3	3572.0	3747.3
45°	2454.0	2438.7	2449.9	2479.7	2517.7	2573.5	2637.8	2719.6	2810.0	2921.3	3039.7
47.5°	2181.2	2187.4	2190.8	2206.9	2227.3	2264.7	2303.7	2359.2	2466.5	2499.1	2563.7
50°	2001.0	2004.0	2002.9	2011.1	2021.5	2045.8	2071.1	2108.7	2146.2	2196.0	2243.5
52.5°	1850.0	1854.2	1853.6	1859.0	1864.5	1879.9	1895.9	1922.5	1947.0	1978.7	2005.9
55°	1730.7	1736.5	1738.7	1743.3	1745.9	1754.0	1760.3	1773.1	1783.5	1801.4	1818.0
57.5°	1639.0	1646.9	1650.5	1652.1	1648.8	1648.5	1646.3	1649.0	1651.2	1660.8	1670.1
60°	1566.7	1573.1	1574.1	1573.1	1567.2	1562.9	1556.1	1554.0	1552.9	1557.5	1562.6
62.5°	1491.2	1493.4	1491.8	1490.0	1483.3	1479.2	1472.1	1469.5	1467.2	1470.4	1473.0
65°	1386.6	1388.5	1386.6	1385.5	1379.4	1376.1	1370.2	1368.2	1364.8	1365.7	1365.0
67.5°	1301.6	1303.7	1302.1	1300.5	1296.3	1294.3	1290.0	1287.1	1283.0	1281.5	1278.6
70°	1217.0	1218.6	1216.2	1214.6	1209.8	1208.0	1203.9	1203.0	1199.8	1199.0	1195.8
72.5°	1119.7	1119.7	1116.4	1115.4	1111.8	1111.7	1110.1	1111.5	1111.5	1113.1	1112.4
75°	1020.0	1018.6	1014.4	1013.6	1010.9	1012.2	1010.4	1012.8	1013.1	1016.8	1017.2
77.5°	920.3	915.0	907.0	903.1	897.7	897.1	893.9	896.1	895.4	899.6	901.3
80°	794.2	787.8	777.6	772.5	766.2	765.3	762.4	765.3	763.8	768.8	772.2
82.5°	634.1	628.6	617.9	613.9	606.5	607.2	604.1	607.2	606.8	614.1	618.4
85°	469.0	465.4	454.4	444.6	433.7	427.3	421.1	420.0	418.1	421.1	423.6
87.5°	270.9	267.5	258.9	253.2	234.1	235.0	227.5	227.1	225.3	223.6	227.5
90°	50.0	55.5	54.9	59.8	59.7	65.4	65.8	71.3	70.9	76.4	77.0
92.5°	37.5	39.7	42.0	44.3	46.6	48.8	51.1	53.4	58.3	63.0	68.1
95°	51.2	53.9	56.6	59.2	61.8	64.5	67.1	69.7	76.9	84.0	91.2
97.5°	72.3	73.9	75.6	77.4	79.2	80.9	82.6	84.4	92.2	100.0	107.7
100°	92.5	93.9	95.3	96.8	98.2	99.6	101.0	102.4	117.6	132.5	147.4
102.5°	145.0	150.9	156.9	162.9	169.0	175.0	180.9	186.9	221.3	255.5	289.6
105°	269.0	285.3	301.8	318.2	334.5	350.8	367.2	383.5	438.3	493.1	548.1
107.5°	492.4	518.1	543.9	569.9	595.7	621.5	647.3	673.3	726.7	780.3	833.8
110°	749.6	774.4	798.9	823.6	848.1	872.9	897.5	922.3	954.6	986.6	1018.8



TEST NUMBER: P1444838
 CATALOG NUMBER: EHBR1-48-UNV-TA-L940-UPL30

CANDELA DISTRIBUTION (continued):

	275°	277.5°	280°	282.5°	285°	287.5°	290°	292.5°	295°	297.5°	300°
112.5°	933.9	945.8	957.9	969.9	982.0	994.3	1006.4	1018.6	1034.7	1050.8	1067.0
115°	990.1	990.8	991.7	992.7	993.6	994.4	995.6	996.7	1002.0	1007.2	1012.4
117.5°	943.9	937.3	931.0	924.4	918.0	911.9	905.7	899.6	898.8	897.9	897.4
120°	850.0	841.2	832.5	823.8	815.4	806.8	798.6	790.3	786.2	782.3	778.3
122.5°	737.4	728.7	720.2	711.6	703.2	695.0	686.9	678.8	676.1	673.4	670.9
125°	631.7	624.5	617.4	610.4	603.7	597.0	590.5	583.9	584.1	584.2	584.8
127.5°	547.0	542.7	538.5	534.5	530.8	526.8	523.2	519.5	521.9	524.3	526.8
130°	489.4	487.7	486.2	484.5	483.5	482.2	481.1	480.0	483.9	487.6	491.5
132.5°	456.5	456.3	456.5	456.6	457.1	457.4	458.2	458.6	463.0	467.2	471.7
135°	438.8	439.6	440.7	441.6	443.1	444.3	445.9	447.2	451.6	455.5	459.8
137.5°	431.9	433.0	434.4	435.7	437.6	439.2	441.0	442.7	446.2	449.4	452.9
140°	431.0	431.7	433.0	434.2	435.6	436.9	438.7	440.0	443.1	445.6	448.3
142.5°	430.7	431.3	432.5	433.7	435.1	436.2	437.7	438.9	441.0	443.0	445.4
145°	434.3	434.9	435.9	436.6	437.7	438.7	439.8	440.9	442.4	443.6	445.1
147.5°	434.9	435.3	436.0	436.8	437.6	438.2	439.0	439.6	440.9	441.8	442.8
150°	433.2	433.4	433.8	434.1	434.8	435.4	436.0	436.4	437.2	438.0	439.1
152.5°	428.0	428.1	428.5	428.8	429.3	429.7	430.1	430.6	431.5	432.1	433.0
155°	424.2	424.7	425.3	425.8	426.4	426.7	427.4	427.8	428.6	429.1	429.9
157.5°	422.9	423.2	423.9	424.2	424.9	425.3	425.9	426.3	427.0	427.4	428.0
160°	421.1	421.9	422.5	423.2	423.9	424.6	425.3	426.0	426.6	427.1	427.6
162.5°	423.2	423.7	424.3	424.6	425.2	425.8	426.2	426.8	427.7	428.2	429.0
165°	424.2	424.8	425.7	426.0	427.0	427.7	428.4	429.1	429.5	430.0	430.5
167.5°	428.0	428.5	429.4	429.9	430.6	431.3	432.0	432.6	433.1	433.4	434.0
170°	429.9	430.5	431.2	431.6	432.3	432.7	433.5	434.0	434.7	435.2	435.9
172.5°	434.6	435.1	435.5	435.7	436.2	436.8	437.3	437.6	438.2	438.7	439.2
175°	438.3	438.3	438.4	438.6	438.7	438.7	438.9	439.2	439.3	439.5	439.6
177.5°	440.0	440.2	440.4	440.5	440.7	440.9	441.0	441.2	441.2	441.2	441.2
180°	439.1	439.1	439.1	439.1	439.1	439.1	439.1	439.1	439.1	439.1	439.1



TEST NUMBER: P1444838
 CATALOG NUMBER: EHBR1-48-UNV-TA-L940-UPL30

CANDELA DISTRIBUTION (continued):

	302.5°	305°	307.5°	310°	312.5°	315°	317.5°	320°	322.5°	325°	327.5°
0°	38129.9	38129.9	38129.9	38129.9	38129.9	38129.9	38129.9	38129.9	38129.9	38129.9	38129.9
2.5°	38533.5	38535.2	38504.1	38502.4	38473.3	38469.6	38441.2	38432.6	38409.6	38401.2	38377.7
5°	39702.6	39664.7	39577.2	39525.8	39439.4	39382.1	39288.5	39227.5	39137.2	39069.1	38978.2
7.5°	40885.0	40826.2	40728.0	40648.4	40528.4	40432.7	40292.3	40177.3	40025.3	39893.6	39733.9
10°	41231.7	41222.7	41197.7	41161.2	41105.4	41042.7	40947.1	40847.5	40714.3	40569.5	40392.1
12.5°	40378.5	40470.7	40596.3	40670.7	40761.4	40801.0	40838.2	40828.9	40804.4	40731.3	40628.6
15°	38217.1	38476.0	38818.8	39084.5	39390.2	39612.3	39857.7	40010.5	40163.0	40233.4	40276.4
17.5°	34778.8	35269.0	35883.7	36393.2	36980.9	37453.0	37970.5	38360.1	38760.7	39047.8	39307.3
20°	30362.3	31072.5	31941.9	32710.0	33603.1	34379.1	35229.6	35927.8	36647.8	37210.9	37743.7
22.5°	25571.9	26415.4	27466.5	28440.2	29591.5	30626.2	31793.5	32809.6	33870.4	34756.7	35613.6
25°	20861.3	21786.3	22935.7	24022.0	25325.9	26529.4	27913.9	29180.3	30551.4	31741.8	32917.8
27.5°	16559.9	17468.1	18641.5	19797.8	21176.6	22459.0	23942.5	25337.6	26898.8	28338.5	29811.4
30°	13024.5	13794.8	14846.9	15966.9	17326.8	18631.8	20131.3	21566.2	23190.3	24762.3	26421.2
32.5°	10318.9	10905.7	11732.9	12680.0	13934.7	15177.0	16604.8	17990.0	19589.3	21177.3	22902.6
35°	8195.1	8652.8	9283.5	10022.5	11085.1	12156.0	13418.9	14678.5	16170.7	17677.5	19354.5
37.5°	6462.3	6833.6	7327.6	7882.7	8735.0	9613.8	10649.5	11693.7	12990.3	14326.0	15845.8
40°	5046.4	5347.1	5731.6	6145.6	6789.2	7466.3	8267.1	9077.0	10118.7	11210.3	12468.1
42.5°	3964.2	4186.2	4457.7	4760.3	5360.8	5720.2	6263.4	6849.1	7614.8	8407.4	9353.0
45°	3183.6	3335.0	3523.4	3726.3	4005.0	4310.0	4681.9	5071.9	5799.4	6156.2	6731.3
47.5°	2658.6	2760.3	2880.1	3008.0	3172.3	3349.7	3570.3	3795.8	4087.5	4389.8	4744.2
50°	2305.1	2408.4	2449.6	2515.8	2610.9	2712.2	2836.6	2961.0	3117.4	3275.9	3458.4
52.5°	2042.7	2076.4	2121.1	2163.3	2222.2	2337.5	2374.8	2439.8	2527.6	2613.4	2709.1
55°	1842.3	1864.2	1893.3	1918.7	1954.4	1988.4	2037.6	2080.8	2139.3	2191.0	2254.7
57.5°	1686.3	1700.3	1720.5	1737.1	1760.3	1779.4	1808.2	1831.7	1865.3	1894.6	1933.2
60°	1573.0	1582.3	1595.8	1606.7	1621.4	1631.5	1645.8	1656.7	1674.5	1689.4	1710.9
62.5°	1480.4	1485.2	1494.1	1500.5	1509.8	1514.9	1522.5	1527.3	1537.0	1544.6	1556.6
65°	1369.3	1370.5	1376.4	1379.1	1386.5	1389.1	1395.3	1397.6	1405.7	1411.2	1421.8
67.5°	1278.3	1275.8	1275.9	1273.8	1274.8	1272.6	1273.3	1271.0	1274.2	1275.9	1284.0
70°	1195.2	1191.7	1190.5	1186.7	1185.6	1181.7	1180.6	1177.0	1176.6	1175.5	1178.3
72.5°	1114.2	1113.3	1113.6	1110.9	1110.6	1107.9	1108.0	1106.3	1108.2	1109.0	1112.7
75°	1021.2	1021.5	1023.2	1020.9	1021.5	1019.3	1020.2	1018.0	1019.1	1018.8	1022.4
77.5°	907.8	910.5	915.4	914.4	916.0	913.5	914.6	911.6	912.5	910.5	911.9
80°	780.3	786.0	792.6	792.4	795.2	793.3	795.9	793.0	794.2	790.8	789.9
82.5°	629.0	633.8	640.9	641.2	647.4	648.5	655.4	655.1	659.5	656.7	654.7
85°	430.0	433.3	439.5	442.9	449.2	453.2	459.9	462.6	457.7	466.5	459.6
87.5°	224.5	232.9	228.3	239.1	236.5	247.5	245.2	255.4	253.4	262.2	261.0
90°	83.9	85.0	92.3	93.8	102.5	104.9	108.9	105.8	109.6	106.8	110.5
92.5°	72.8	78.0	82.9	87.8	92.7	97.8	93.1	88.5	83.9	79.6	74.8
95°	98.4	105.6	112.8	120.0	127.2	134.3	126.6	119.0	111.3	103.6	95.9
97.5°	115.4	123.1	130.8	138.5	146.5	154.2	145.1	135.9	126.8	117.8	108.7
100°	162.3	177.3	192.2	207.1	222.2	237.1	220.1	203.2	186.3	169.3	152.3
102.5°	324.1	358.3	392.6	427.0	461.2	495.4	459.5	423.6	387.6	351.5	315.4
105°	602.9	657.8	712.6	767.5	822.4	877.5	819.0	760.6	702.2	643.9	585.3
107.5°	887.4	940.9	994.6	1048.0	1101.7	1155.4	1096.3	1037.0	977.9	918.6	859.3
110°	1051.3	1083.4	1115.7	1148.2	1180.3	1212.8	1169.6	1126.5	1083.2	1040.0	996.9



TEST NUMBER: P1444838
 CATALOG NUMBER: EHBR1-48-UNV-TA-L940-UPL30

CANDELA DISTRIBUTION (continued):

	302.5°	305°	307.5°	310°	312.5°	315°	317.5°	320°	322.5°	325°	327.5°
112.5°	1083.2	1099.7	1115.8	1132.2	1148.5	1164.8	1134.1	1103.4	1072.5	1041.9	1010.8
115°	1017.9	1023.2	1028.6	1034.0	1039.3	1044.7	1024.1	1003.5	982.9	962.2	941.2
117.5°	896.7	896.2	895.5	895.2	894.4	893.8	882.4	871.0	859.4	847.9	836.4
120°	774.2	770.4	766.5	762.5	758.5	754.4	749.8	745.2	740.4	735.6	730.7
122.5°	668.2	665.8	663.1	660.5	657.6	655.0	653.5	652.0	650.2	648.5	646.7
125°	585.0	585.4	585.5	585.9	586.0	586.3	585.5	585.0	584.2	583.7	582.8
127.5°	528.9	531.4	533.6	535.9	538.0	540.3	540.3	540.5	540.5	540.5	540.5
130°	495.1	499.2	502.7	506.3	509.8	513.6	513.2	513.2	513.0	512.8	512.4
132.5°	475.9	480.2	484.3	488.6	492.7	496.8	496.4	496.2	495.5	495.4	495.0
135°	463.8	467.9	471.7	475.9	479.5	483.4	482.9	482.4	481.7	481.4	480.7
137.5°	455.9	459.5	462.6	465.8	468.8	472.1	471.3	470.9	470.1	469.8	469.1
140°	450.9	453.5	455.9	458.6	461.1	463.7	462.7	462.0	461.2	460.3	459.3
142.5°	447.3	449.4	451.2	453.3	455.1	457.2	455.6	454.4	453.1	451.8	450.5
145°	446.5	448.0	449.3	450.7	451.6	453.2	451.5	450.0	448.2	446.7	445.0
147.5°	443.6	444.6	445.2	446.3	446.7	447.7	446.1	444.6	443.0	441.2	439.6
150°	439.6	440.6	441.2	442.0	442.5	443.5	441.6	440.0	438.2	436.5	434.8
152.5°	433.8	434.4	435.1	435.6	436.3	436.8	435.1	433.8	431.9	430.1	428.6
155°	430.1	430.8	431.1	431.6	431.8	432.2	430.6	429.5	428.1	426.6	425.0
157.5°	428.4	428.9	429.4	429.7	430.0	430.4	429.3	428.4	427.1	426.1	424.9
160°	428.0	428.5	428.8	429.1	429.6	429.7	428.8	428.2	427.3	426.2	425.2
162.5°	429.5	430.1	430.6	431.1	431.7	432.2	431.2	430.2	429.1	428.1	426.8
165°	430.9	431.4	431.8	432.2	432.4	432.7	432.1	431.4	430.6	430.0	429.1
167.5°	434.2	434.9	435.2	435.5	435.7	436.0	435.3	434.8	434.0	433.1	432.3
170°	436.3	436.7	437.2	437.7	438.1	438.3	437.9	437.4	436.7	436.1	435.4
172.5°	439.6	440.0	440.2	440.7	440.9	441.3	440.8	440.1	439.5	438.8	438.1
175°	439.6	439.7	440.0	440.0	440.0	440.1	439.6	439.1	438.5	438.0	437.5
177.5°	441.2	441.2	441.2	441.1	441.1	441.1	440.8	440.4	440.1	439.7	439.2
180°	439.1	439.1	439.1	439.1	439.1	439.1	439.1	439.1	439.1	439.1	439.1



TEST NUMBER: P1444838
 CATALOG NUMBER: EHBR1-48-UNV-TA-L940-UPL30

CANDELA DISTRIBUTION (continued):

	330°	332.5°	335°	337.5°	340°	342.5°	345°	347.5°	350°	352.5°	355°
0°	38129.9	38129.9	38129.9	38129.9	38129.9	38129.9	38129.9	38129.9	38129.9	38129.9	38129.9
2.5°	38369.5	38352.8	38342.1	38328.4	38320.0	38309.4	38301.6	38295.0	38289.6	38284.7	38280.9
5°	38909.0	38823.2	38756.6	38684.5	38625.4	38566.3	38520.7	38483.0	38457.0	38437.6	38426.0
7.5°	39595.9	39438.9	39299.3	39152.3	39020.6	38891.1	38779.4	38683.1	38610.9	38564.2	38535.7
10°	40209.4	39999.2	39791.3	39572.6	39365.1	39164.0	38978.2	38814.9	38685.6	38599.7	38549.4
12.5°	40484.4	40305.3	40093.1	39855.5	39601.3	39344.0	39093.4	38867.3	38677.5	38550.2	38476.7
15°	40242.2	40168.6	40024.6	39840.2	39599.0	39333.1	39038.7	38762.0	38507.5	38342.4	38246.8
17.5°	39454.4	39556.9	39545.8	39475.4	39301.9	39078.2	38778.2	38467.4	38149.0	37928.4	37807.9
20°	38124.8	38447.3	38610.9	38694.9	38626.8	38481.6	38210.0	37894.6	37523.5	37235.5	37059.7
22.5°	36256.5	36825.9	37180.7	37440.3	37495.4	37446.0	37206.1	36906.1	36492.6	36146.3	35886.7
25°	33851.3	34685.5	35246.3	35685.8	35856.6	35900.7	35696.7	35398.3	34937.2	34533.9	34177.3
27.5°	31018.4	32102.3	32851.0	33441.7	33708.3	33824.0	33636.1	33331.8	32786.3	32304.8	31839.1
30°	27829.1	29115.0	30016.5	30724.7	31049.8	31202.6	31003.0	30663.3	30028.5	29449.1	28862.4
32.5°	24415.5	25822.7	26805.0	27574.2	27896.3	28039.9	27779.0	27397.4	26663.7	25981.2	25296.9
35°	20841.6	22262.0	23252.5	24001.2	24271.1	24357.8	24024.0	23582.9	22770.1	22020.9	21274.9
37.5°	17194.8	18516.3	19416.5	20088.5	20255.6	20270.5	19868.4	19381.2	18526.8	17788.2	17045.5
40°	13579.6	14694.0	15420.9	15958.7	16016.7	15965.0	15527.7	15037.5	14238.2	13576.5	12924.4
42.5°	10174.2	11015.4	11534.1	11902.6	11880.7	11778.5	11377.6	10956.2	10296.8	9792.8	9279.7
45°	7256.8	7811.4	8114.6	8330.3	8261.1	8163.7	7851.7	7556.3	7108.3	6782.7	6437.9
47.5°	5041.4	5703.7	5588.4	6010.0	5646.8	5886.7	5387.1	5111.6	4873.8	4700.8	4505.9
50°	3609.2	3761.0	3834.3	3884.3	3857.8	3820.9	3731.1	3650.8	3542.2	3463.0	3370.8
52.5°	2787.3	2863.1	2904.7	2934.8	2928.9	2915.5	2876.3	2840.6	2789.7	2756.2	2715.7
55°	2361.0	2362.1	2438.5	2405.7	2454.2	2397.4	2419.8	2356.9	2367.0	2313.0	2276.8
57.5°	1961.9	1993.0	2007.0	2020.6	2016.7	2014.3	1999.1	1991.6	1974.4	1969.2	1957.0
60°	1725.7	1742.0	1745.3	1751.6	1746.4	1744.4	1732.5	1728.3	1716.8	1714.7	1706.7
62.5°	1563.8	1572.2	1572.2	1572.2	1565.4	1558.8	1545.7	1538.8	1529.0	1526.9	1522.2
65°	1428.7	1437.3	1438.7	1440.5	1435.6	1430.5	1418.9	1411.4	1401.4	1397.6	1392.3
67.5°	1289.2	1298.4	1301.5	1306.2	1303.4	1302.3	1294.4	1291.4	1284.8	1283.2	1278.3
70°	1179.6	1183.5	1183.2	1183.1	1176.9	1171.4	1162.1	1157.8	1150.9	1149.5	1144.9
72.5°	1114.5	1117.2	1115.6	1113.1	1105.1	1096.9	1086.1	1078.2	1069.2	1063.6	1057.1
75°	1022.9	1026.4	1024.1	1022.6	1015.3	1010.0	1001.3	997.0	990.6	988.8	984.4
77.5°	910.2	911.9	908.3	907.8	902.3	898.9	892.4	891.3	886.6	886.7	882.5
80°	784.8	783.9	777.9	776.8	771.3	769.9	764.8	765.1	761.4	762.9	759.9
82.5°	645.8	642.3	634.5	632.2	625.9	625.3	622.0	624.8	622.5	625.9	623.9
85°	462.8	463.8	460.4	460.4	458.6	459.1	458.8	461.0	461.3	464.3	464.2
87.5°	258.1	261.7	261.0	264.4	264.2	268.0	269.3	275.0	275.7	280.9	280.9
90°	107.8	112.0	109.1	113.6	112.4	117.9	117.8	123.1	122.1	126.7	124.7
92.5°	70.2	65.7	61.3	56.6	54.3	51.7	50.0	47.1	45.2	42.6	40.3
95°	88.1	80.5	72.8	65.0	62.4	59.7	57.0	54.4	51.8	49.2	46.5
97.5°	99.6	90.5	81.3	72.2	69.9	67.6	65.2	63.0	60.7	58.4	56.1
100°	135.3	118.2	101.5	84.2	82.3	80.4	78.4	76.5	74.6	72.5	70.5
102.5°	279.4	243.3	207.2	171.1	164.2	157.4	150.6	143.5	136.7	129.8	123.0
105°	526.8	468.3	409.8	351.2	332.6	314.1	295.4	276.8	258.2	239.6	221.0
107.5°	800.0	740.5	681.1	621.7	587.5	553.1	518.7	484.2	450.0	415.4	381.0
110°	953.6	910.3	867.0	823.5	796.1	768.3	740.7	712.9	685.3	657.5	629.8



TEST NUMBER: P1444838
 CATALOG NUMBER: EHBR1-48-UNV-TA-L940-UPL30

CANDELA DISTRIBUTION (continued):

	330°	332.5°	335°	337.5°	340°	342.5°	345°	347.5°	350°	352.5°	355°
112.5°	979.9	949.0	918.0	886.8	874.4	861.9	849.5	836.9	824.3	811.6	799.1
115°	920.4	899.7	878.7	857.6	853.5	849.0	844.7	840.2	836.0	831.4	826.8
117.5°	824.9	813.2	801.5	789.8	790.7	791.4	792.5	793.0	793.8	794.2	794.9
120°	725.8	721.0	716.2	711.3	715.4	719.1	723.2	726.8	730.6	734.0	737.8
122.5°	645.1	643.2	641.5	639.5	644.4	649.2	653.8	658.5	663.0	667.2	671.6
125°	582.3	581.3	580.6	579.6	584.7	589.5	594.2	598.7	603.3	607.5	611.9
127.5°	540.6	540.6	540.7	540.5	544.4	547.5	551.2	554.2	557.6	560.4	563.5
130°	512.2	511.8	511.8	511.4	514.6	517.9	521.2	523.9	526.9	529.4	532.0
132.5°	494.7	494.1	493.9	493.3	495.9	498.2	500.7	502.5	504.6	506.2	507.8
135°	480.4	479.6	479.1	478.4	480.7	483.1	485.1	487.0	489.0	490.4	491.9
137.5°	468.6	467.9	467.3	466.6	468.7	470.7	472.6	474.3	476.0	477.5	478.8
140°	458.6	457.7	457.1	455.9	457.9	459.6	461.4	462.8	464.4	465.5	466.8
142.5°	449.1	447.6	446.6	445.0	446.5	447.7	449.1	450.2	451.3	452.1	452.9
145°	443.4	441.6	440.1	438.4	439.6	440.5	441.6	442.5	443.2	443.7	444.4
147.5°	438.2	436.4	434.7	433.0	434.1	434.7	435.3	435.8	436.6	436.9	437.2
150°	433.0	431.0	429.2	427.3	428.0	428.6	428.9	429.6	430.1	430.3	430.6
152.5°	426.7	424.9	423.2	421.2	421.8	422.1	422.4	422.6	423.0	423.2	423.3
155°	423.6	422.0	420.5	418.7	419.2	419.4	419.6	419.8	419.9	420.0	420.0
157.5°	423.7	422.1	421.2	419.7	419.8	419.8	419.9	419.5	419.4	419.2	419.0
160°	424.3	423.1	422.0	420.8	420.7	420.6	420.7	420.4	420.2	419.8	419.5
162.5°	425.6	424.4	423.0	421.7	421.6	421.6	421.5	421.1	420.9	420.5	420.3
165°	428.3	427.3	426.4	425.3	425.1	424.8	424.7	424.2	423.9	423.2	422.9
167.5°	431.4	430.5	429.5	428.4	428.4	428.5	428.4	428.1	427.9	427.5	427.4
170°	434.7	433.9	433.2	432.3	432.0	431.9	431.6	431.4	430.9	430.6	430.1
172.5°	437.3	436.6	435.7	434.7	434.7	434.5	434.2	434.1	433.7	433.4	433.3
175°	436.8	436.3	435.5	435.0	434.8	434.7	434.5	434.4	434.1	434.0	433.7
177.5°	438.8	438.5	437.9	437.5	437.4	437.4	437.2	437.1	437.1	436.9	436.8
180°	439.1	439.1	439.1	439.1	439.1	439.1	439.1	439.1	439.1	439.1	439.1



TEST NUMBER: P1444838
 CATALOG NUMBER: EHBR1-48-UNV-TA-L940-UPL30

CANDELA DISTRIBUTION (continued):

	357.5°	360°
0°	38129.9	38129.9
2.5°	38277.6	38275.6
5°	38419.9	38417.6
7.5°	38528.1	38527.5
10°	38540.9	38547.5
12.5°	38464.0	38469.3
15°	38239.4	38249.9
17.5°	37810.1	37823.8
20°	37070.5	37084.8
22.5°	35872.7	35878.6
25°	34131.3	34106.5
27.5°	31757.2	31714.7
30°	28739.2	28698.0
32.5°	25140.9	25115.2
35°	21090.4	21074.2
37.5°	16826.0	16792.9
40°	12686.0	12589.7
42.5°	9054.9	8885.8
45°	6257.8	6057.3
47.5°	4368.6	4244.7
50°	3311.3	3271.3
52.5°	2698.1	2688.8
55°	2276.6	2272.5
57.5°	1959.7	1958.3
60°	1710.9	1710.5
62.5°	1525.4	1526.0
65°	1394.7	1395.0
67.5°	1279.6	1278.8
70°	1146.6	1145.6
72.5°	1055.1	1053.5
75°	984.4	983.4
77.5°	883.8	882.3
80°	762.0	759.9
82.5°	626.7	624.5
85°	467.5	467.6
87.5°	286.0	285.9
90°	129.0	126.3
92.5°	38.3	36.3
95°	43.9	41.3
97.5°	53.8	51.5
100°	68.7	66.7
102.5°	116.1	109.3
105°	202.4	183.8
107.5°	346.7	312.3
110°	602.0	574.4



TEST NUMBER: P1444838
CATALOG NUMBER: EHBR1-48-UNV-TA-L940-UPL30

CANDELA DISTRIBUTION (continued):

	357.5°	360°
112.5°	786.4	773.7
115°	821.9	817.3
117.5°	795.3	795.6
120°	740.9	744.5
122.5°	675.4	679.5
125°	615.8	619.8
127.5°	566.0	568.5
130°	533.8	536.2
132.5°	509.1	510.4
135°	492.9	494.1
137.5°	479.5	480.4
140°	467.3	468.1
142.5°	453.3	453.8
145°	444.8	445.0
147.5°	437.0	437.3
150°	430.6	430.7
152.5°	423.2	423.2
155°	419.8	419.7
157.5°	418.4	418.2
160°	419.1	418.8
162.5°	419.8	419.5
165°	422.1	421.6
167.5°	426.9	426.8
170°	429.8	429.5
172.5°	432.8	432.6
175°	433.6	433.4
177.5°	436.8	436.6
180°	439.1	439.1

LM-79-2019: Approved Method: Electrical and Photometric Measurements of Solid-State Lighting Products

Report Prepared for

Cooper Lighting Solutions

Metalux

Report Number: SP1-2506-472-7

Test Date: 08/04/2025

Luminaire Tested: EHBR-60-L940-N

Data in this report applies to families of products including EHBR-60-L940-N

Test Information

Test Method: LM-79-2019
 Report Number: SP1-2506-472-7
 Test Lab: COOPER LIGHTING SOLUTIONS
 Photometer: SP1 - 76IN SPHERE
 Measurement Geometry: 4π
 Issue Date: 08/05/2025
 Manufacturer: COOPER LIGHTING SOLUTIONS
 Product Line: Metalux
 Catalog Number: **EHBR-60-L940-N**
 Description: Elevate Round Highbay at, 60000 lumens, 4000K 90CRI LEDs with N lens

Spectral Parameters

CCT (K): 3963
 CIE u': 0.2267
 CIE v': 0.5003
 Duv: -0.0016
 CIE x: 0.3810
 CIE y: 0.3738
 CIE z: 0.2453
 Peak Wavelength (nm): 630
 Dominant Wavelength (nm): 580
 Purity: 26.49712
 Rf: 90.7
 Rg: 101

CRI (Ra):	93.4		
R1:	95.2	R9:	66.4
R2:	95.1	R10:	86.6
R3:	93.3	R11:	94.4
R4:	94.5	R12:	75.4
R5:	94.2	R13:	95.0
R6:	92.9	R14:	95.4
R7:	94.0	R15:	92.8
R8:	87.7		



Test Conditions

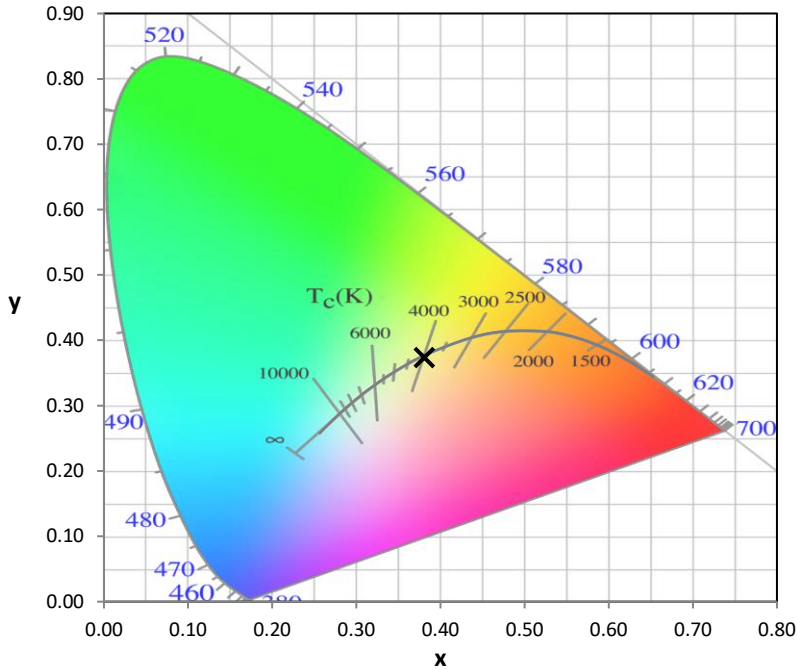
Stabilization Time: 44M
 Operation Time: 1H 44M
 Sphere Temperature (°C): 25.0

REPORT NUMBER: SP1-2506-472-7

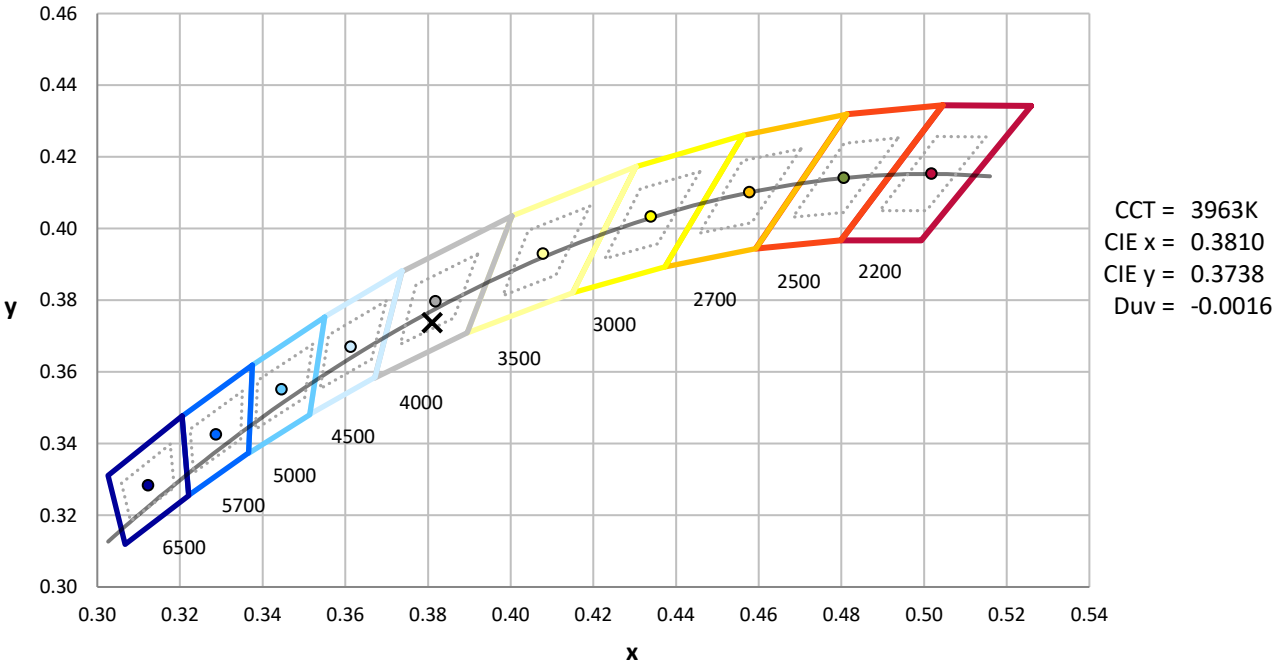
Measurement and Test Equipment			
Instrument	Identification Number	Calibration Date	Calibration Due Date
Photometer	76INCH SPHERE IN0058	6/16/2025	12/16/2025
Power Meter	XITRON INXT2011004	1/21/2025	1/21/2026
AC Power Source	CHROMA 61603 IN0063	10/22/2024	10/22/2025
DC Power Source	AGILENT E3634A IN0208	10/22/2024	10/22/2025
Sphere Thermometer	ONSET IN0085	10/22/2024	10/22/2025
Room Thermometer	ONSET IN0046	10/22/2024	10/22/2025

REPORT NUMBER: SP1-2506-472-7

CIE 1931 Chromaticity Diagram



CIE 1931 Chromaticity Diagram with 2017 ANSI 7-Step and 4-Step Quadrangles



Point lies inside the ANSI 4000K 4-step quadrangle

REPORT NUMBER: SP1-2506-472-7

Photopic Flux vs. Wavelength



Photopic Lumens: NR

λ (nm)	Power W [^] /nm	Lumens (ϕ /nm)	λ (nm)	Power W [^] /nm	Lumens (ϕ /nm)	λ (nm)	Power W [^] /nm	Lumens (ϕ /nm)	λ (nm)	Power W [^] /nm	Lumens (ϕ /nm)	λ (nm)	Power W [^] /nm	Lumens (ϕ /nm)
360	0	NR	490	141	NR	620	276	NR	750	5	NR	880	0	NR
365	0	NR	495	167	NR	625	279	NR	755	4	NR	885	0	NR
370	0	NR	500	193	NR	630	1000	NR	760	4	NR	890	0	NR
375	0	NR	505	215	NR	635	628	NR	765	3	NR	895	0	NR
380	0	NR	510	230	NR	640	164	NR	770	3	NR	900	0	NR
385	0	NR	515	243	NR	645	161	NR	775	2	NR	905	0	NR
390	1	NR	520	251	NR	650	137	NR	780	2	NR	910	0	NR
395	2	NR	525	256	NR	655	111	NR	785	2	NR	915	0	NR
400	3	NR	530	262	NR	660	92	NR	790	1	NR	920	0	NR
405	4	NR	535	267	NR	665	76	NR	795	1	NR	925	0	NR
410	6	NR	540	271	NR	670	71	NR	800	1	NR	930	0	NR
415	11	NR	545	276	NR	675	56	NR	805	1	NR	935	0	NR
420	20	NR	550	280	NR	680	47	NR	810	1	NR	940	0	NR
425	37	NR	555	285	NR	685	40	NR	815	1	NR	945	0	NR
430	63	NR	560	290	NR	690	34	NR	820	1	NR	950	0	NR
435	108	NR	565	294	NR	695	29	NR	825	1	NR	955	0	NR
440	186	NR	570	296	NR	700	25	NR	830	0	NR	960	0	NR
445	323	NR	575	298	NR	705	21	NR	835	0	NR	965	0	NR
450	403	NR	580	299	NR	710	18	NR	840	0	NR	970	0	NR
455	293	NR	585	298	NR	715	15	NR	845	0	NR	975	0	NR
460	214	NR	590	296	NR	720	13	NR	850	0	NR	980	0	NR
465	180	NR	595	288	NR	725	11	NR	855	0	NR	985	0	NR
470	132	NR	600	286	NR	730	9	NR	860	0	NR	990	0	NR
475	109	NR	605	282	NR	735	8	NR	865	0	NR	995	0	NR
480	110	NR	610	311	NR	740	7	NR	870	0	NR	1000	0	NR
485	121	NR	615	334	NR	745	6	NR	875	0	NR			

REPORT NUMBER: SP1-2506-472-7

Scotopic Flux vs. Wavelength



Scotopic Lumens: NR

S/P: 1.76

λ (nm)	Power W [^] /nm	Lumens (φ/nm)	λ (nm)	Power W [^] /nm	Lumens (φ/nm)	λ (nm)	Power W [^] /nm	Lumens (φ/nm)	λ (nm)	Power W [^] /nm	Lumens (φ/nm)	λ (nm)	Power W [^] /nm	Lumens (φ/nm)
360	0	NR	490	141	NR	620	276	NR	750	5	NR	880	0	NR
365	0	NR	495	167	NR	625	279	NR	755	4	NR	885	0	NR
370	0	NR	500	193	NR	630	1000	NR	760	4	NR	890	0	NR
375	0	NR	505	215	NR	635	628	NR	765	3	NR	895	0	NR
380	0	NR	510	230	NR	640	164	NR	770	3	NR	900	0	NR
385	0	NR	515	243	NR	645	161	NR	775	2	NR	905	0	NR
390	1	NR	520	251	NR	650	137	NR	780	2	NR	910	0	NR
395	2	NR	525	256	NR	655	111	NR	785	2	NR	915	0	NR
400	3	NR	530	262	NR	660	92	NR	790	1	NR	920	0	NR
405	4	NR	535	267	NR	665	76	NR	795	1	NR	925	0	NR
410	6	NR	540	271	NR	670	71	NR	800	1	NR	930	0	NR
415	11	NR	545	276	NR	675	56	NR	805	1	NR	935	0	NR
420	20	NR	550	280	NR	680	47	NR	810	1	NR	940	0	NR
425	37	NR	555	285	NR	685	40	NR	815	1	NR	945	0	NR
430	63	NR	560	290	NR	690	34	NR	820	1	NR	950	0	NR
435	108	NR	565	294	NR	695	29	NR	825	1	NR	955	0	NR
440	186	NR	570	296	NR	700	25	NR	830	0	NR	960	0	NR
445	323	NR	575	298	NR	705	21	NR	835	0	NR	965	0	NR
450	403	NR	580	299	NR	710	18	NR	840	0	NR	970	0	NR
455	293	NR	585	298	NR	715	15	NR	845	0	NR	975	0	NR
460	214	NR	590	296	NR	720	13	NR	850	0	NR	980	0	NR
465	180	NR	595	288	NR	725	11	NR	855	0	NR	985	0	NR
470	132	NR	600	286	NR	730	9	NR	860	0	NR	990	0	NR
475	109	NR	605	282	NR	735	8	NR	865	0	NR	995	0	NR
480	110	NR	610	311	NR	740	7	NR	870	0	NR	1000	0	NR
485	121	NR	615	334	NR	745	6	NR	875	0	NR			

REPORT NUMBER: SP1-2506-472-7

Melanopic Flux vs. Wavelength



Melanopic Lumens: NR

M/P: 3.64

λ (nm)	Power W [^] /nm	Lumens (φ/nm)	λ (nm)	Power W [^] /nm	Lumens (φ/nm)	λ (nm)	Power W [^] /nm	Lumens (φ/nm)	λ (nm)	Power W [^] /nm	Lumens (φ/nm)	λ (nm)	Power W [^] /nm	Lumens (φ/nm)
360	0	NR	490	141	NR	620	276	NR	750	5	NR	880	0	NR
365	0	NR	495	167	NR	625	279	NR	755	4	NR	885	0	NR
370	0	NR	500	193	NR	630	1000	NR	760	4	NR	890	0	NR
375	0	NR	505	215	NR	635	628	NR	765	3	NR	895	0	NR
380	0	NR	510	230	NR	640	164	NR	770	3	NR	900	0	NR
385	0	NR	515	243	NR	645	161	NR	775	2	NR	905	0	NR
390	1	NR	520	251	NR	650	137	NR	780	2	NR	910	0	NR
395	2	NR	525	256	NR	655	111	NR	785	2	NR	915	0	NR
400	3	NR	530	262	NR	660	92	NR	790	1	NR	920	0	NR
405	4	NR	535	267	NR	665	76	NR	795	1	NR	925	0	NR
410	6	NR	540	271	NR	670	71	NR	800	1	NR	930	0	NR
415	11	NR	545	276	NR	675	56	NR	805	1	NR	935	0	NR
420	20	NR	550	280	NR	680	47	NR	810	1	NR	940	0	NR
425	37	NR	555	285	NR	685	40	NR	815	1	NR	945	0	NR
430	63	NR	560	290	NR	690	34	NR	820	1	NR	950	0	NR
435	108	NR	565	294	NR	695	29	NR	825	1	NR	955	0	NR
440	186	NR	570	296	NR	700	25	NR	830	0	NR	960	0	NR
445	323	NR	575	298	NR	705	21	NR	835	0	NR	965	0	NR
450	403	NR	580	299	NR	710	18	NR	840	0	NR	970	0	NR
455	293	NR	585	298	NR	715	15	NR	845	0	NR	975	0	NR
460	214	NR	590	296	NR	720	13	NR	850	0	NR	980	0	NR
465	180	NR	595	288	NR	725	11	NR	855	0	NR	985	0	NR
470	132	NR	600	286	NR	730	9	NR	860	0	NR	990	0	NR
475	109	NR	605	282	NR	735	8	NR	865	0	NR	995	0	NR
480	110	NR	610	311	NR	740	7	NR	870	0	NR	1000	0	NR
485	121	NR	615	334	NR	745	6	NR	875	0	NR			

Summary

$R_f = 90.7$
 $R_g = 101$
 $CIE R_a = 93.4$
 $R_9 = 66.4$



Color Vector Graphics

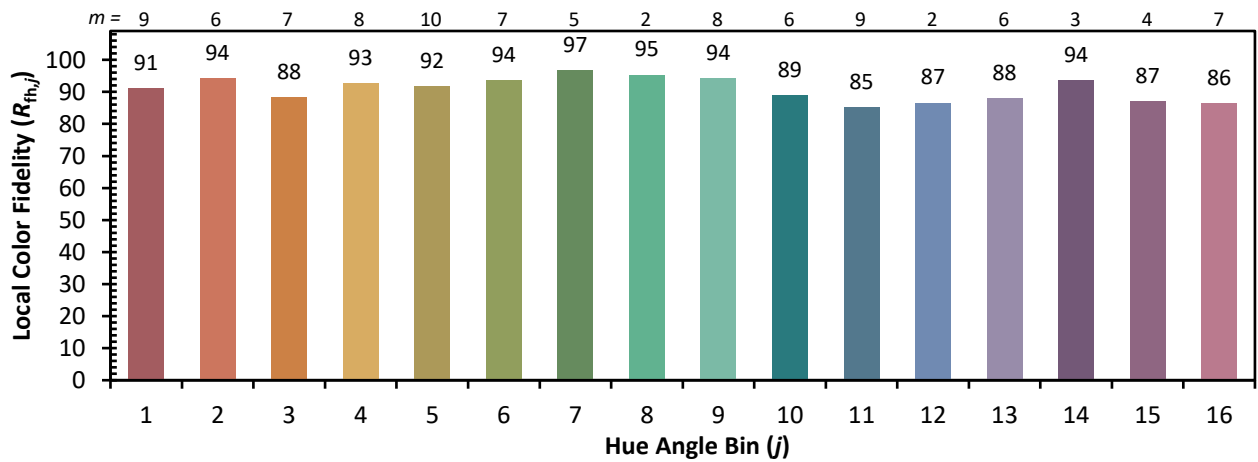
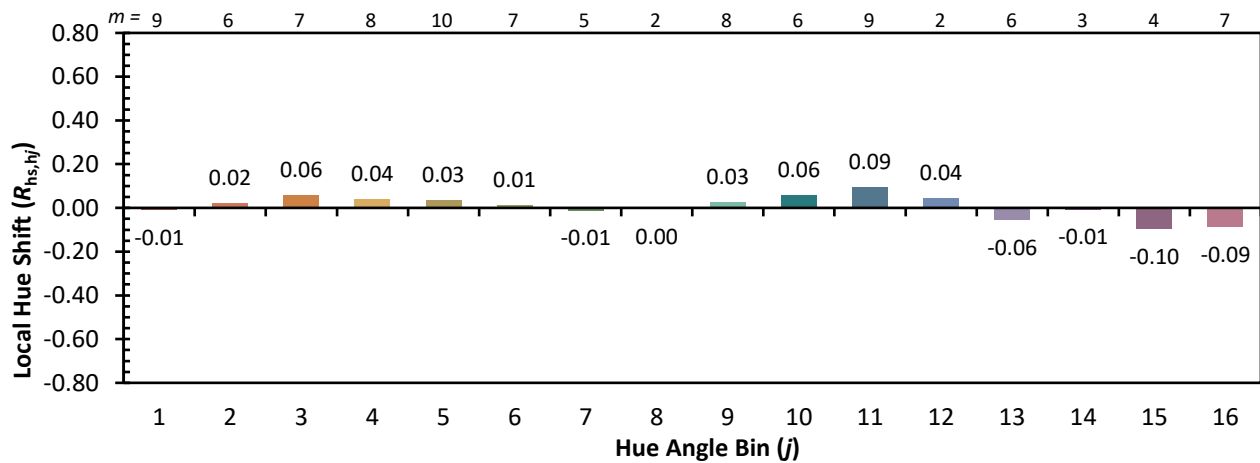
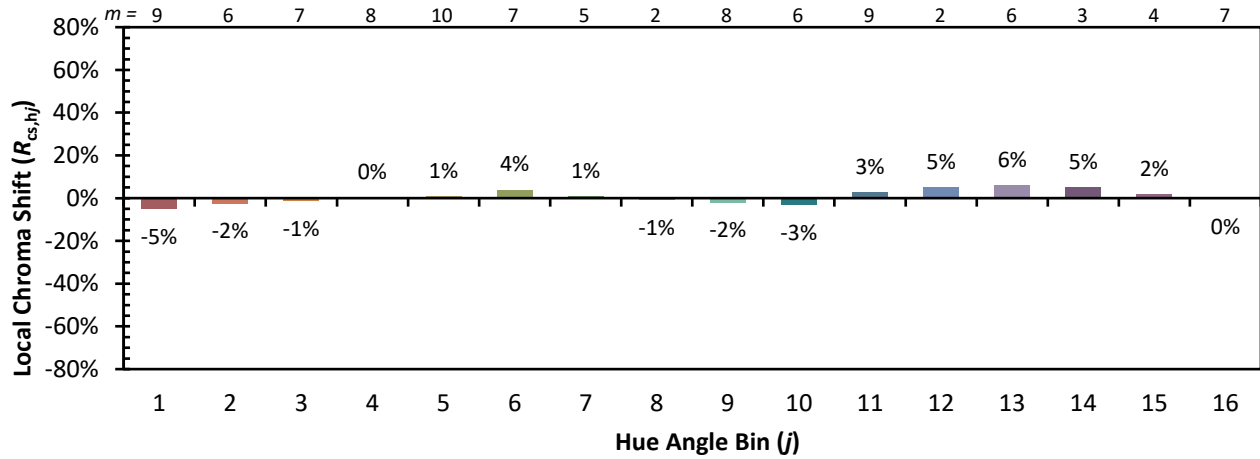


Individual Sample Fidelity Index ($R_{f,i}$)

CES01 = 86	CES26 = 90	CES51 = 99	CES76 = 83
CES02 = 62	CES27 = 93	CES52 = 97	CES77 = 87
CES03 = 31	CES28 = 94	CES53 = 95	CES78 = 79
CES04 = 69	CES29 = 91	CES54 = 96	CES79 = 94
CES05 = 49	CES30 = 98	CES55 = 95	CES80 = 91
CES06 = 50	CES31 = 92	CES56 = 95	CES81 = 80
CES07 = 42	CES32 = 84	CES57 = 94	CES82 = 96
CES08 = 41	CES33 = 95	CES58 = 95	CES83 = 95
CES09 = 29	CES34 = 90	CES59 = 98	CES84 = 93
CES10 = 74	CES35 = 94	CES60 = 93	CES85 = 82
CES11 = 57	CES36 = 84	CES61 = 93	CES86 = 84
CES12 = 63	CES37 = 92	CES62 = 90	CES87 = 90
CES13 = 43	CES38 = 93	CES63 = 92	CES88 = 97
CES14 = 74	CES39 = 98	CES64 = 91	CES89 = 84
CES15 = 71	CES40 = 96	CES65 = 88	CES90 = 99
CES16 = 47	CES41 = 98	CES66 = 88	CES91 = 74
CES17 = 49	CES42 = 89	CES67 = 87	CES92 = 78
CES18 = 56	CES43 = 89	CES68 = 87	CES93 = 87
CES19 = 71	CES44 = 99	CES69 = 88	CES94 = 75
CES20 = 66	CES45 = 93	CES70 = 84	CES95 = 83
CES21 = 85	CES46 = 95	CES71 = 80	CES96 = 91
CES22 = 78	CES47 = 92	CES72 = 93	CES97 = 93
CES23 = 91	CES48 = 96	CES73 = 78	CES98 = 93
CES24 = 90	CES49 = 93	CES74 = 92	CES99 = 94
CES25 = 71	CES50 = 99	CES75 = 81	



Color Rendition by Hue-Angle Bin



Measure Comparisons



(END OF REPORT)