

Cooper Lighting Solutions Photometric Lab  
1121 Highway 74 South  
Peachtree City, GA 30269



Scaled data based on original data using  
LM-79-2019 Approved Method: Electrical and Photometric Measurements of Solid-  
State Lighting Products

Test Report Prepared for  
Cooper Lighting Solutions

Brand: METALUX

Report Number: P1444815

Luminaire Tested: EHBR1-30-UNV-TA-L940-UPL36

Issue Date: 5/1/2026

**Test Information**

Test Method: LM-79-2019  
Report Number: P1444815  
REPORT IS A COMBINATION OF REPORTS P1444348 AND P1431635  
Test Lab: INNOVATION CENTER  
Issue Date: 5/1/2026  
Manufacturer: COOPER LIGHTING SOLUTIONS  
Product Line: METALUX  
Catalog Number: EHBR1-30-UNV-TA-L940-UPL36  
Description: Elevate Round Highbay at, 30000 lumens, 4000K 90CRI LEDs with TA lens  
Light Source: -  
Ballast/Driver: -

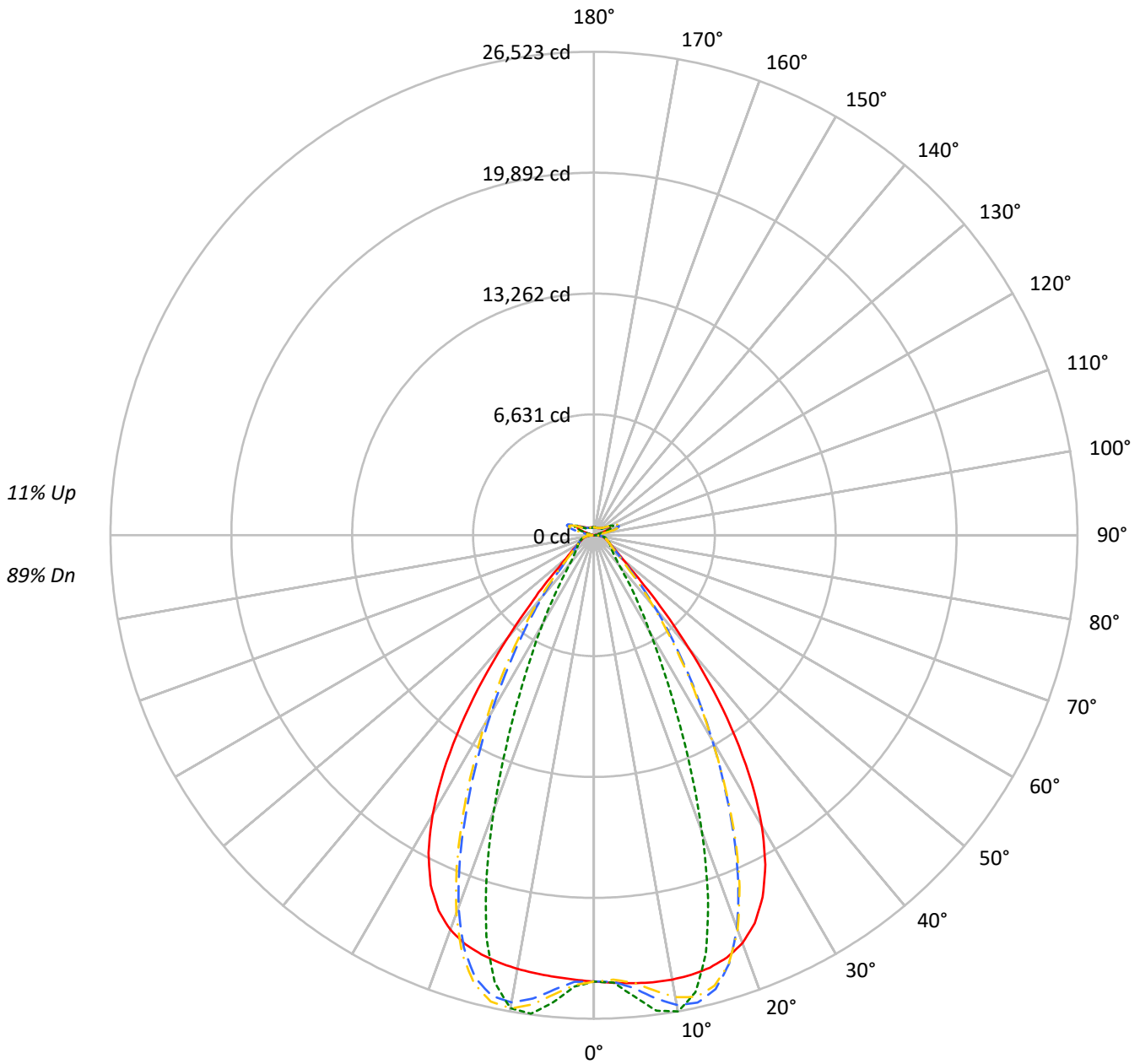
**Summary**

Lumens per Lamp: N/A  
Luminaire Lumens: 31775.7 lumens  
Efficiency: N/A  
Efficacy: 168.8 lumens/watt  
Spacing Criteria (0/90/45): 1.13 / 0.77 / 0.88  
Luminous Opening: Vertical Cylinder (Dia: 1.71' x H: 0.1')  
CIE Type: Semi-Direct

Input Watts (W): 188.2  
Input Voltage (V): NR  
Input Current (Ain): NR  
Voltage Rise (V): NR  
Power Factor: NR  
Total Harmonic Distortion (THDi): NR  
Frequency (hertz): 60  
Stabilization Time: NR  
Operation Time: NR  
Ambient Temperature (°C): NR  
Test Distance: 24 FT

TEST NUMBER: P1444815  
CATALOG NUMBER: EHBR1-30-UNV-TA-L940-UPL36

### Luminous Intensity Polar Plot



— 0°-180°    - - 45°-225°    - · - · 90°-270°    - · - · 135°-315°



TEST NUMBER: P1444815  
 CATALOG NUMBER: EHBR1-30-UNV-TA-L940-UPL36

**COEFFICIENT OF UTILIZATION - ZONAL CAVITY METHOD:**

RF	20				20				20				20				20				
RC	80				70				50				30				10			0	
RW	70	50	30	10	70	50	30	10	50	30	10	50	30	10	50	30	10	50	30	10	0
RCR																					
0	116	116	116	116	112	112	112	112	105	105	105	98	98	98	92	92	92	89			89
1	109	106	103	100	105	102	100	97	96	94	92	90	89	87	85	84	83	80			80
2	102	96	91	87	99	94	89	85	88	85	82	84	81	78	79	77	75	73			73
3	96	88	82	78	93	86	81	76	82	77	74	78	74	71	74	71	68	66			66
4	90	81	75	70	87	79	73	69	76	71	67	72	68	65	69	66	63	61			61
5	85	75	68	63	82	73	67	63	70	65	61	67	63	59	65	61	58	56			56
6	80	70	63	58	78	68	62	57	66	60	56	63	58	55	61	57	53	52			52
7	75	65	58	53	73	64	57	53	61	56	52	59	54	51	57	53	50	48			48
8	71	61	54	49	69	60	53	49	57	52	48	56	51	47	54	49	46	45			45
9	68	57	50	46	66	56	50	46	54	49	45	52	47	44	51	46	43	42			42
10	64	53	47	43	62	53	47	42	51	46	42	49	45	41	48	44	41	39			39

**AVERAGE LUMINANCE (cd/sqm):**

	0°	90°	180°	270°
0°	114974	114974	114974	114974
5°	115531	118900	113914	120458
10°	116496	124836	113702	124010
15°	117067	113163	113503	108607
20°	115857	84302	112065	78000
25°	109663	53316	106039	48375
30°	95799	32039	92088	29281
35°	73727	20105	69487	17809
40°	46639	12611	42671	11851
45°	24038	9825	23641	9663
50°	14094	8739	13661	8603
55°	10797	8268	10397	8194
60°	9136	8446	8747	8337
65°	8581	8821	8253	8520
70°	8383	9235	7965	8888
75°	8965	9795	8479	9362
80°	9276	10845	8410	9900
85°	8737	10466	7059	8961

**MAXIMUM LUMINANCE 45°-90°:**

Horizontal Angle: 25°  
 Vertical Angle: 45°  
 Luminance: 36788 cd/sqm



TEST NUMBER: P1444815  
 CATALOG NUMBER: EHBR1-30-UNV-TA-L940-UPL36

**ZONAL LUMENS:**

Zone	Lumens	% Fixture
0°-10°	2412.9	7.6
10°-20°	6787.6	21.4
20°-30°	7730.6	24.3
30°-40°	5556.4	17.5
40°-50°	2562.6	8.1
50°-60°	1226.3	3.9
60°-70°	894.8	2.8
70°-80°	679.8	2.1
80°-90°	315.3	1.0
90°-100°	100.3	0.3
100°-110°	605.2	1.9
110°-120°	1118.6	3.5
120°-130°	676.9	2.1
130°-140°	425.4	1.3
140°-150°	307.8	1.0
150°-160°	209.5	0.7
160°-170°	123.9	0.4
170°-180°	41.9	0.1
0°-30°	16931.0	53.3
0°-40°	22487.4	70.8
0°-60°	26276.3	82.7
0°-90°	28166.1	88.6
90°-120°	1824.1	5.7
90°-150°	3234.2	10.2
90°-180°	3610.0	11.4
0°-180°	31775.7	100.0

**CANDELA DISTRIBUTION:**

	0°	90°	180°	270°	360°	Flux
0°	24483	24483	24483	24483	24483	
5°	24668	25387	24322	25720	24668	2357
15°	24560	23741	23812	22785	24560	6920
25°	21900	10647	21176	9660	21900	9928
35°	13532	3690	12753	3269	13532	8305
45°	3889	1590	3825	1564	3889	3308
55°	1459	1117	1405	1107	1459	1347
65°	896	921	861	889	896	895
75°	632	690	597	660	632	657
85°	300	360	243	308	300	282
90°	93	114	35	40	93	56
95°	46	52	46	52	46	44
105°	215	280	143	280	215	286
115°	973	1186	1019	1186	973	897
125°	721	766	818	767	721	657
135°	553	500	596	502	553	432
145°	479	473	511	477	479	303
155°	439	445	469	448	439	204
165°	430	432	446	434	430	122
175°	435	440	444	441	435	42
180°	441	441	441	441	441	



TEST NUMBER: P1444815  
 CATALOG NUMBER: EHBR1-30-UNV-TA-L940-UPL36

**CANDELA DISTRIBUTION (FULL):**

	0°	2.5°	5°	7.5°	10°	12.5°	15°	17.5°	20°	22.5°	25°
0°	24483.0	24483.0	24483.0	24483.0	24483.0	24483.0	24483.0	24483.0	24483.0	24483.0	24483.0
2.5°	24576.5	24574.6	24574.2	24572.4	24572.1	24572.1	24571.2	24569.2	24568.0	24565.2	24561.9
5°	24667.7	24666.6	24667.3	24667.5	24665.8	24662.0	24655.9	24648.6	24639.3	24630.7	24622.8
7.5°	24738.3	24739.9	24742.2	24741.7	24736.3	24727.4	24715.1	24708.2	24712.3	24725.6	24756.2
10°	24751.1	24761.6	24765.7	24764.4	24753.7	24746.1	24749.1	24775.0	24826.6	24895.5	24989.7
12.5°	24701.0	24713.9	24713.4	24709.1	24698.8	24709.3	24746.8	24824.1	24934.7	25070.6	25230.0
15°	24560.0	24576.7	24572.1	24566.5	24559.6	24594.1	24669.2	24803.3	24974.3	25165.8	25361.9
17.5°	24286.5	24306.6	24296.9	24290.5	24284.7	24349.5	24478.4	24674.8	24890.1	25106.8	25292.7
20°	23811.9	23825.4	23802.1	23791.2	23800.4	23927.4	24117.2	24368.0	24595.0	24799.8	24926.9
22.5°	23037.5	23054.2	23010.4	23005.3	23059.4	23254.4	23494.7	23775.0	23988.3	24150.8	24199.7
25°	21899.6	21916.1	21864.0	21895.2	21987.2	22252.8	22538.9	22838.8	23020.8	23141.1	23107.9
27.5°	20363.8	20378.9	20329.5	20393.1	20538.5	20887.5	21224.3	21549.6	21711.7	21796.0	21689.2
30°	18426.8	18458.1	18399.8	18488.5	18710.5	19163.6	19549.5	19914.2	20075.9	20140.0	19973.8
32.5°	16126.3	16170.9	16106.6	16238.5	16548.3	17092.4	17530.9	17938.5	18117.2	18190.5	18002.7
35°	13531.6	13595.5	13521.7	13719.7	14101.8	14707.8	15193.3	15648.3	15860.1	15963.9	15774.7
37.5°	10782.7	10843.5	10803.5	11067.8	11487.3	12115.5	12610.9	13101.8	13341.1	13496.8	13347.7
40°	8083.8	8139.5	8169.7	8471.7	8866.4	9458.4	9934.3	10420.1	10687.7	10883.2	10791.2
42.5°	5705.6	5761.7	5864.4	6155.8	6485.0	6975.0	7382.7	7818.8	8074.4	8283.0	8247.6
45°	3889.3	3954.6	4083.2	4321.9	4559.9	4911.5	5210.9	5550.0	5758.8	5949.9	5952.2
47.5°	2725.4	2771.3	2886.2	3049.2	3204.4	3644.5	3662.6	3829.2	3969.6	4112.5	4131.0
50°	2100.5	2128.1	2189.0	2279.8	2367.8	2482.0	2586.6	2707.5	2793.8	2872.1	2890.8
52.5°	1726.4	1743.9	1775.0	1824.2	1875.2	1937.4	1993.3	2059.7	2106.6	2148.6	2157.3
55°	1459.1	1473.7	1519.9	1529.2	1587.5	1598.8	1623.7	1664.0	1691.3	1716.5	1722.7
57.5°	1257.4	1268.0	1277.8	1298.7	1316.7	1342.8	1363.8	1392.8	1410.0	1428.2	1429.7
60°	1098.3	1105.9	1112.9	1127.4	1139.7	1157.8	1172.3	1192.0	1204.3	1217.9	1219.5
62.5°	979.9	985.3	990.0	999.6	1008.2	1022.2	1033.8	1050.2	1061.7	1072.2	1074.6
65°	895.7	899.7	902.7	909.9	917.6	929.4	939.8	953.3	961.7	969.7	971.5
67.5°	821.1	824.9	828.0	834.6	839.9	848.7	855.7	865.8	872.2	878.6	878.8
70°	735.6	739.2	741.5	747.6	751.9	759.6	765.2	774.3	780.8	788.0	789.8
72.5°	676.5	678.5	681.7	687.4	693.2	701.4	708.9	718.4	726.2	733.7	736.8
75°	631.5	633.9	635.9	640.8	644.9	651.8	657.4	666.0	672.9	680.8	684.8
77.5°	566.4	569.3	571.1	575.9	579.5	586.1	590.2	597.9	603.6	610.9	614.4
80°	488.0	490.6	491.9	496.4	499.3	505.3	509.4	516.9	521.5	528.8	533.1
82.5°	401.0	403.5	404.2	408.5	410.0	415.0	418.0	425.7	431.4	440.9	447.5
85°	300.3	301.2	302.6	301.5	307.6	308.0	314.9	316.1	325.2	327.6	337.9
87.5°	183.5	186.3	187.6	191.8	193.6	197.8	199.1	203.6	206.0	211.0	213.4
90°	92.7	97.9	100.3	106.4	108.7	114.1	116.2	122.1	124.6	130.7	134.6
92.5°	40.3	43.1	45.7	48.8	51.5	54.9	57.9	60.7	63.5	66.8	72.4
95°	46.1	49.3	52.5	55.6	58.8	62.0	65.2	68.4	71.6	74.7	83.9
97.5°	58.1	60.9	63.6	66.4	69.1	71.9	74.6	77.4	80.1	82.8	93.8
100°	75.8	78.2	80.5	82.8	85.2	87.5	89.8	92.1	94.5	96.8	117.2
102.5°	126.4	134.7	142.9	151.2	159.4	167.6	175.9	184.1	192.3	200.6	244.0
105°	215.2	237.6	260.1	282.5	304.9	327.4	349.8	372.1	394.6	416.9	487.6
107.5°	369.1	410.5	452.0	493.5	535.0	576.4	618.0	659.3	700.9	742.1	813.9
110°	683.6	716.9	750.3	783.7	817.1	850.6	883.9	917.1	950.6	983.8	1036.3



TEST NUMBER: P1444815  
 CATALOG NUMBER: EHBR1-30-UNV-TA-L940-UPL36

**CANDELA DISTRIBUTION (continued):**

	0°	2.5°	5°	7.5°	10°	12.5°	15°	17.5°	20°	22.5°	25°
112.5°	922.3	937.4	952.5	967.7	982.8	997.8	1012.9	1028.0	1043.1	1058.2	1095.7
115°	972.6	977.9	983.4	988.7	994.1	999.4	1004.7	1009.9	1015.2	1020.3	1045.8
117.5°	943.5	942.6	941.8	941.1	940.0	939.1	938.2	937.2	936.2	935.2	949.5
120°	878.5	874.1	869.6	864.9	860.4	855.7	851.2	846.5	841.7	837.0	843.2
122.5°	796.7	791.2	785.9	780.4	774.9	769.4	763.9	758.1	752.6	747.0	749.5
125°	720.9	715.3	710.1	704.4	698.9	693.2	687.6	681.9	676.3	670.4	671.9
127.5°	654.9	651.2	647.4	643.4	639.4	635.5	631.4	627.3	623.3	619.0	619.5
130°	611.8	608.6	605.1	601.6	598.0	594.3	590.6	586.9	583.3	579.4	580.1
132.5°	576.6	574.4	571.9	569.5	566.9	564.1	561.5	558.6	556.0	553.3	554.1
135°	552.7	550.5	548.5	546.0	543.7	541.2	538.7	536.0	533.5	530.9	532.0
137.5°	532.3	530.5	528.5	526.3	524.1	521.7	519.6	517.1	514.7	512.2	513.3
140°	513.8	512.0	510.4	508.3	506.3	504.3	502.1	499.9	497.8	495.4	496.8
142.5°	493.0	491.6	490.3	488.8	487.3	485.5	483.8	482.0	480.4	478.5	480.3
145°	479.3	478.2	477.1	475.9	474.5	473.0	471.6	470.0	468.6	467.0	469.0
147.5°	467.2	466.3	465.5	464.5	463.6	462.2	461.1	459.7	458.6	457.3	459.2
150°	456.7	455.9	455.2	454.2	453.2	451.9	450.8	449.7	448.6	447.3	449.1
152.5°	445.8	444.9	444.2	443.2	442.3	440.9	440.2	438.9	437.9	436.7	438.3
155°	439.0	438.1	437.2	436.3	435.4	434.3	433.3	432.2	431.3	430.0	431.4
157.5°	434.4	433.7	433.1	432.2	431.7	430.9	430.1	429.2	428.5	427.7	428.7
160°	432.1	431.4	430.8	430.0	429.3	428.5	427.8	426.9	426.3	425.5	426.4
162.5°	430.0	429.2	428.5	427.7	427.2	426.2	425.6	424.9	424.2	423.3	424.4
165°	429.5	429.1	428.7	428.2	427.8	427.3	426.9	426.3	425.9	425.3	425.9
167.5°	432.8	432.2	431.6	431.0	430.4	429.8	429.1	428.5	427.9	427.2	427.8
170°	433.6	433.1	432.9	432.7	432.3	431.9	431.6	431.3	430.9	430.5	431.1
172.5°	435.6	435.3	435.1	434.9	434.5	434.3	434.1	433.8	433.6	433.2	434.0
175°	435.3	435.0	434.9	434.7	434.6	434.4	434.3	434.1	434.1	433.9	434.3
177.5°	438.2	438.1	438.1	438.0	438.0	437.9	437.8	437.6	437.5	437.5	437.9
180°	440.8	440.8	440.8	440.8	440.8	440.8	440.8	440.8	440.8	440.8	440.8



TEST NUMBER: P1444815  
 CATALOG NUMBER: EHBR1-30-UNV-TA-L940-UPL36

**CANDELA DISTRIBUTION (continued):**

	27.5°	30°	32.5°	35°	37.5°	40°	42.5°	45°	47.5°	50°	52.5°
0°	24483.0	24483.0	24483.0	24483.0	24483.0	24483.0	24483.0	24483.0	24483.0	24483.0	24483.0
2.5°	24559.6	24556.6	24552.5	24547.4	24542.9	24537.7	24525.5	24521.8	24525.9	24528.6	24534.2
5°	24617.9	24619.7	24620.3	24631.4	24641.1	24665.1	24853.5	24928.3	24986.3	25023.0	25078.8
7.5°	24793.9	24850.5	24906.5	24981.8	25046.7	25134.5	25464.0	25604.3	25704.0	25775.7	25864.0
10°	25092.0	25215.6	25331.4	25467.2	25583.9	25717.6	26024.3	26161.0	26247.3	26310.0	26368.7
12.5°	25392.4	25563.8	25718.6	25869.7	25996.1	26111.9	26219.8	26267.7	26271.7	26273.7	26242.6
15°	25548.8	25712.7	25849.2	25949.0	26023.3	26056.1	25870.4	25772.9	25649.8	25548.3	25381.5
17.5°	25450.0	25548.3	25607.3	25601.5	25570.9	25468.1	24942.0	24652.6	24365.4	24106.5	23767.1
20°	25011.1	25003.7	24952.4	24807.1	24632.1	24359.8	23457.9	22937.6	22434.4	21992.5	21456.4
22.5°	24194.6	24066.2	23887.0	23573.8	23225.8	22750.3	21457.8	20692.3	19991.9	19373.2	18680.1
25°	23011.6	22747.2	22416.8	21919.6	21378.8	20685.2	19092.1	18140.1	17299.1	16569.8	15770.0
27.5°	21497.4	21099.3	20615.1	19926.9	19194.2	18305.6	16539.4	15488.7	14585.9	13804.0	12952.8
30°	19704.8	19187.0	18561.8	17707.6	16823.9	15816.1	14024.7	12960.5	12046.7	11242.4	10390.5
32.5°	17679.0	17072.5	16339.9	15381.2	14425.5	13389.3	11659.4	10629.2	9756.3	8982.4	8211.4
35°	15444.7	14794.3	14019.2	13041.4	12091.5	11084.0	9496.6	8567.8	7796.9	7112.8	6490.3
37.5°	13048.0	12409.3	11672.7	10751.1	9870.2	8957.3	7587.6	6809.3	6162.4	5594.6	5113.9
40°	10556.1	9997.2	9359.8	8563.0	7811.3	7051.0	5926.7	5308.8	4798.3	4365.3	4005.1
42.5°	8094.6	7661.6	7172.7	6543.1	5967.8	5388.9	4523.6	4065.8	3687.7	3376.0	3121.4
45°	5872.9	5583.3	5255.4	4817.6	4419.6	4015.9	3399.9	3078.3	2832.0	2631.0	2461.0
47.5°	4105.5	3937.4	3927.2	3522.6	3230.8	2983.9	2587.1	2383.9	2233.1	2111.3	2003.7
50°	2883.2	2801.8	2700.8	2556.5	2421.1	2281.5	2039.7	1917.0	1828.5	1754.8	1686.7
52.5°	2155.4	2113.2	2059.4	1982.8	1909.4	1830.9	1677.9	1599.7	1572.0	1503.2	1449.4
55°	1721.6	1697.4	1666.7	1621.7	1577.1	1559.2	1428.1	1370.1	1333.3	1306.2	1277.2
57.5°	1430.0	1412.0	1393.8	1363.3	1337.5	1306.2	1236.6	1206.8	1185.0	1168.9	1148.9
60°	1219.8	1209.0	1198.8	1181.0	1167.0	1150.1	1105.9	1089.1	1077.7	1068.0	1055.3
62.5°	1076.6	1071.0	1065.8	1056.3	1049.2	1040.0	1009.8	1001.7	996.0	991.2	983.4
65°	973.3	969.3	966.3	960.0	956.4	951.1	925.1	919.7	916.2	914.4	909.9
67.5°	879.3	875.2	873.2	868.8	867.3	863.9	842.7	839.7	838.5	839.0	837.5
70°	791.5	789.8	790.7	789.9	792.0	792.6	779.7	779.6	781.0	783.7	784.0
72.5°	738.9	738.9	739.9	740.3	742.2	743.2	732.5	731.9	732.6	734.5	734.6
75°	688.8	689.6	692.3	693.2	695.5	695.9	681.8	680.2	680.3	682.2	681.5
77.5°	619.5	622.4	627.6	630.4	634.7	635.5	619.6	617.8	617.9	619.7	618.1
80°	540.8	546.5	554.8	560.5	567.2	569.9	553.6	549.7	546.0	545.5	542.2
82.5°	457.3	464.2	474.1	479.2	486.4	488.1	460.8	455.6	452.5	452.8	449.8
85°	349.1	354.3	363.3	366.2	370.7	370.3	339.1	325.7	329.2	323.7	328.1
87.5°	218.9	222.0	227.7	228.3	230.5	230.0	198.6	192.5	190.6	190.7	188.5
90°	142.0	146.3	153.4	155.8	161.4	163.1	140.0	139.4	135.1	134.4	129.2
92.5°	78.3	83.8	89.5	95.1	100.9	106.6	109.4	114.1	108.4	102.4	96.8
95°	93.3	102.6	111.9	121.2	130.5	139.8	149.2	158.5	149.8	141.1	132.3
97.5°	104.8	115.8	126.7	137.8	148.8	159.8	170.8	181.8	172.4	162.9	153.6
100°	137.8	158.3	178.9	199.4	219.9	240.4	261.0	281.5	263.5	245.3	227.2
102.5°	287.5	331.2	374.7	418.2	461.7	505.4	549.1	592.7	551.3	509.9	468.4
105°	558.2	628.9	699.5	769.9	840.5	911.1	982.0	1052.7	986.5	920.4	854.2
107.5°	885.5	957.2	1028.7	1100.3	1172.0	1243.6	1315.7	1387.3	1322.8	1258.1	1193.6
110°	1088.5	1140.8	1193.2	1245.3	1297.6	1350.0	1402.8	1455.1	1416.5	1377.7	1339.0



TEST NUMBER: P1444815  
 CATALOG NUMBER: EHBR1-30-UNV-TA-L940-UPL36

**CANDELA DISTRIBUTION (continued):**

	27.5°	30°	32.5°	35°	37.5°	40°	42.5°	45°	47.5°	50°	52.5°
112.5°	1133.0	1170.5	1207.9	1245.2	1282.5	1320.0	1358.2	1395.8	1376.3	1356.8	1337.6
115°	1070.9	1096.4	1121.5	1146.8	1172.1	1197.3	1223.4	1249.0	1242.9	1236.7	1230.6
117.5°	963.7	977.9	992.1	1006.3	1020.3	1034.4	1050.0	1064.3	1065.4	1066.6	1067.9
120°	849.4	855.4	861.5	867.5	873.5	879.5	887.1	893.4	898.9	904.1	909.6
122.5°	751.9	754.3	756.6	759.0	761.3	763.7	767.8	770.6	774.4	778.1	781.9
125°	673.1	674.4	675.6	676.9	678.1	679.4	682.6	684.2	684.7	685.0	685.4
127.5°	619.9	620.3	620.7	621.0	621.3	621.7	624.2	624.9	623.0	621.0	618.9
130°	581.0	581.7	582.4	583.0	583.8	584.6	587.6	588.9	585.2	581.3	577.7
132.5°	555.0	556.0	556.8	557.9	558.7	559.5	563.0	564.5	560.2	555.7	551.4
135°	533.0	534.1	535.3	536.3	537.5	538.7	542.6	544.3	540.3	535.9	531.8
137.5°	514.4	515.5	516.6	517.9	519.0	520.1	524.3	526.1	523.0	519.5	516.3
140°	498.2	499.5	500.9	502.3	503.6	505.2	509.6	511.8	509.3	506.6	504.1
142.5°	481.9	483.9	485.7	487.6	489.4	491.4	496.8	499.4	497.5	495.5	493.7
145°	470.9	473.2	475.1	477.4	479.4	481.8	487.5	490.6	489.5	488.3	487.2
147.5°	460.8	462.9	464.8	466.8	468.7	471.0	477.0	479.9	479.3	478.6	477.8
150°	450.9	453.1	454.9	457.0	459.1	461.4	468.0	471.1	470.6	470.0	469.3
152.5°	440.1	441.9	443.6	445.5	447.4	449.4	457.1	460.2	459.9	459.1	458.6
155°	432.8	434.1	435.5	437.0	438.5	440.2	448.2	451.1	450.8	450.5	450.3
157.5°	429.7	430.6	431.5	432.6	433.7	434.8	442.8	445.8	445.4	445.1	444.9
160°	427.1	427.9	428.6	429.5	430.2	431.2	439.3	442.0	441.8	441.4	441.1
162.5°	425.4	426.6	427.5	428.5	429.5	430.7	439.0	442.1	441.5	441.0	440.5
165°	426.7	427.3	427.8	428.7	429.2	430.0	437.6	440.0	439.8	439.5	439.2
167.5°	428.5	429.2	430.0	430.7	431.4	432.3	439.5	441.8	441.6	441.2	441.0
170°	431.5	432.2	432.7	433.5	434.1	434.9	440.8	442.7	442.4	441.9	441.4
172.5°	434.6	435.4	436.0	436.8	437.4	438.2	443.3	445.0	444.8	444.4	443.8
175°	434.9	435.3	435.8	436.5	437.0	437.5	441.5	442.9	442.8	442.6	442.4
177.5°	438.2	438.6	439.0	439.5	439.8	440.3	442.7	443.6	443.6	443.6	443.5
180°	440.8	440.8	440.8	440.8	440.8	440.8	440.8	440.8	440.8	440.8	440.8



TEST NUMBER: P1444815  
 CATALOG NUMBER: EHBR1-30-UNV-TA-L940-UPL36

**CANDELA DISTRIBUTION (continued):**

	55°	57.5°	60°	62.5°	65°	67.5°	70°	72.5°	75°	77.5°	80°
0°	24483.0	24483.0	24483.0	24483.0	24483.0	24483.0	24483.0	24483.0	24483.0	24483.0	24483.0
2.5°	24535.5	24544.2	24545.4	24555.5	24554.7	24566.7	24564.8	24574.6	24568.8	24576.9	24570.1
5°	25111.9	25164.1	25191.4	25242.4	25258.5	25304.1	25317.1	25358.7	25360.4	25393.5	25385.9
7.5°	25926.6	26003.5	26049.3	26112.3	26144.3	26196.8	26220.0	26258.8	26271.4	26302.2	26304.5
10°	26413.1	26450.4	26476.6	26494.2	26510.3	26517.8	26526.6	26524.2	26526.6	26523.1	26530.7
12.5°	26221.7	26167.1	26131.0	26062.6	26022.9	25947.4	25910.2	25837.5	25811.1	25748.7	25739.7
15°	25252.5	25062.2	24927.7	24732.1	24609.1	24416.7	24304.1	24130.5	24051.2	23913.2	23877.0
17.5°	23486.0	23132.8	22859.2	22508.5	22265.0	21937.2	21731.0	21459.6	21311.0	21092.2	21016.4
20°	21009.6	20486.8	20076.6	19587.9	19238.2	18802.5	18523.6	18171.8	17967.5	17698.8	17589.8
22.5°	18102.2	17451.1	16938.9	16361.6	15939.7	15454.1	15120.0	14739.3	14517.1	14225.1	14095.8
25°	15105.3	14387.5	13818.0	13209.8	12764.0	12277.2	11943.0	11569.1	11339.2	11061.9	10933.4
27.5°	12239.2	11512.6	10962.2	10396.7	9987.8	9548.6	9247.0	8920.5	8716.5	8479.8	8359.0
30°	9710.0	9069.1	8600.7	8131.4	7791.3	7434.5	7183.9	6913.4	6734.3	6531.7	6416.5
32.5°	7649.3	7154.5	6787.8	6415.4	6137.0	5838.9	5622.3	5383.6	5222.0	5041.0	4936.8
35°	6058.1	5673.7	5381.2	5074.7	4835.4	4581.6	4390.8	4184.7	4039.7	3883.9	3793.8
37.5°	4786.5	4480.8	4240.1	3985.5	3789.1	3578.7	3507.9	3271.5	3121.2	2996.8	2910.7
40°	3756.5	3513.4	3314.2	3119.5	2959.3	2799.8	2671.8	2545.4	2448.5	2359.5	2298.0
42.5°	2933.6	2757.4	2612.0	2469.3	2352.4	2236.2	2143.4	2056.4	1991.1	1933.0	1893.3
45°	2332.0	2210.9	2109.8	2009.4	1926.9	1849.3	1786.9	1731.4	1689.2	1654.2	1629.4
47.5°	1915.8	1832.9	1761.6	1693.8	1637.8	1587.0	1545.1	1531.5	1486.2	1455.6	1444.0
50°	1628.1	1578.1	1523.9	1474.0	1436.5	1399.3	1372.2	1345.7	1328.6	1314.6	1310.4
52.5°	1413.5	1375.2	1345.1	1313.4	1288.7	1262.3	1243.6	1225.9	1216.5	1209.2	1208.3
55°	1253.9	1227.2	1207.1	1185.9	1171.2	1155.6	1145.9	1136.6	1132.5	1128.8	1129.1
57.5°	1133.2	1115.3	1102.2	1088.4	1080.5	1073.1	1070.6	1068.2	1069.5	1070.1	1072.1
60°	1045.1	1033.5	1025.4	1017.5	1014.1	1011.7	1013.5	1015.6	1019.9	1023.3	1026.4
62.5°	977.7	971.1	967.0	962.9	962.5	962.7	966.3	969.7	975.2	979.2	982.1
65°	908.3	904.4	903.2	900.4	901.8	902.7	907.1	909.8	915.1	918.2	922.0
67.5°	838.1	837.3	838.0	838.0	840.5	842.6	846.8	849.8	854.4	857.3	860.4
70°	786.3	786.7	788.6	788.9	791.6	793.0	796.7	798.7	802.7	805.2	808.9
72.5°	736.0	735.2	735.6	734.4	735.3	735.0	736.9	738.0	741.4	743.4	747.8
75°	682.3	680.1	679.5	677.1	677.2	675.4	676.3	676.2	678.4	679.4	682.6
77.5°	617.6	613.8	611.9	607.8	607.7	606.2	607.8	608.8	612.8	614.7	618.4
80°	540.1	534.1	531.3	526.7	527.5	527.2	531.1	534.2	539.1	540.0	544.7
82.5°	448.9	442.8	439.9	435.3	436.4	436.5	440.1	440.7	445.0	446.8	452.2
85°	321.4	323.7	317.3	317.8	316.4	318.9	321.4	324.5	328.0	333.9	338.5
87.5°	189.3	188.5	190.7	191.0	194.2	196.0	201.2	204.2	210.2	214.7	223.1
90°	127.4	122.4	122.2	119.2	120.4	117.4	118.7	115.7	117.7	116.5	119.4
92.5°	90.6	84.9	78.7	72.9	66.9	61.3	58.1	55.7	52.6	50.3	47.1
95°	123.6	115.0	106.3	97.5	88.9	80.2	77.0	73.9	70.7	67.5	64.3
97.5°	144.3	135.0	125.7	116.3	107.0	97.6	95.5	93.4	91.3	89.2	87.1
100°	209.2	191.2	173.2	155.0	137.0	119.1	117.4	115.7	114.0	112.4	110.6
102.5°	427.2	385.8	344.5	303.1	261.8	220.5	213.3	206.2	198.9	191.7	184.6
105°	788.0	721.8	655.7	589.5	523.5	457.3	437.7	417.7	398.1	378.3	358.7
107.5°	1129.1	1064.6	1000.1	935.7	871.2	806.7	775.5	744.4	713.1	682.0	650.8
110°	1300.0	1261.4	1222.7	1183.8	1145.3	1106.6	1076.8	1047.2	1017.3	987.5	957.9



TEST NUMBER: P1444815  
 CATALOG NUMBER: EHBR1-30-UNV-TA-L940-UPL36

**CANDELA DISTRIBUTION (continued):**

	55°	57.5°	60°	62.5°	65°	67.5°	70°	72.5°	75°	77.5°	80°
112.5°	1318.2	1298.8	1279.5	1260.2	1241.0	1221.7	1207.1	1192.7	1178.2	1163.7	1149.1
115°	1224.4	1218.3	1212.2	1206.2	1200.1	1194.1	1193.1	1192.2	1191.1	1190.2	1189.2
117.5°	1069.1	1070.4	1071.5	1072.9	1074.2	1075.5	1083.2	1091.0	1098.8	1106.7	1114.7
120°	914.9	920.2	925.5	931.0	936.3	941.9	952.2	962.8	973.2	983.9	994.4
122.5°	785.7	789.4	793.1	797.1	800.8	804.8	815.0	825.4	835.8	846.3	857.0
125°	685.5	685.9	686.3	686.4	686.8	687.3	695.8	704.3	713.0	721.8	730.4
127.5°	616.7	614.7	612.6	610.5	608.4	606.4	611.4	616.7	621.7	626.9	632.2
130°	573.8	570.0	566.1	562.4	558.4	554.7	556.8	558.9	561.0	563.2	565.4
132.5°	546.9	542.5	537.9	533.5	529.0	524.5	524.5	524.7	524.7	525.0	525.4
135°	527.6	523.4	519.0	514.8	510.4	506.3	505.3	504.3	503.4	502.5	501.7
137.5°	513.0	509.5	506.3	503.0	499.4	496.1	494.5	493.2	491.7	490.6	489.2
140°	501.3	498.8	495.9	493.3	490.6	488.1	486.7	485.7	484.5	483.5	482.4
142.5°	491.6	489.8	487.8	485.9	483.9	481.9	480.7	479.7	478.5	477.6	476.4
145°	485.9	484.6	483.3	482.1	480.9	479.7	478.7	477.8	477.0	476.4	475.6
147.5°	477.2	476.4	475.7	474.9	474.0	473.3	472.7	472.3	471.6	471.2	470.7
150°	468.5	467.9	467.1	466.6	465.7	465.1	464.7	464.4	464.1	464.1	463.8
152.5°	457.9	457.3	456.6	456.0	455.2	454.6	454.4	454.3	454.0	453.8	453.5
155°	449.8	449.4	449.0	448.6	448.0	447.7	447.3	446.8	446.5	446.2	445.7
157.5°	444.5	444.2	443.7	443.5	442.9	442.5	442.2	441.8	441.3	441.0	440.7
160°	440.8	440.5	440.0	439.7	439.4	439.0	438.3	437.9	437.1	436.7	436.0
162.5°	439.9	439.4	438.9	438.2	437.7	437.2	436.8	436.4	436.0	435.6	435.2
165°	438.8	438.4	438.1	437.7	437.5	437.1	436.5	436.0	435.3	434.8	434.1
167.5°	440.7	440.4	440.0	439.7	439.3	439.0	438.5	437.9	437.3	436.8	436.0
170°	441.0	440.5	440.1	439.5	439.0	438.5	438.1	437.4	436.8	436.5	435.7
172.5°	443.5	443.2	442.8	442.3	441.8	441.4	441.0	440.5	440.0	439.6	439.1
175°	442.3	442.3	442.2	441.9	441.8	441.6	441.4	441.3	441.1	441.0	440.8
177.5°	443.5	443.4	443.4	443.2	443.1	443.1	442.8	442.6	442.3	442.0	441.8
180°	440.8	440.8	440.8	440.8	440.8	440.8	440.8	440.8	440.8	440.8	440.8



TEST NUMBER: P1444815  
 CATALOG NUMBER: EHBR1-30-UNV-TA-L940-UPL36

**CANDELA DISTRIBUTION (continued):**

	82.5°	85°	87.5°	90°	92.5°	95°	97.5°	100°	102.5°	105°	107.5°
0°	24483.0	24483.0	24483.0	24483.0	24483.0	24483.0	24483.0	24483.0	24483.0	24483.0	24483.0
2.5°	24577.2	24570.9	24573.9	24562.4	24565.2	24551.3	24550.0	24534.2	24532.7	24517.9	24512.4
5°	25409.3	25395.6	25411.1	25387.1	25391.7	25360.4	25357.8	25317.4	25303.4	25252.7	25230.8
7.5°	26323.8	26318.7	26328.1	26308.0	26307.3	26279.4	26267.9	26231.6	26209.1	26155.9	26121.9
10°	26524.2	26529.0	26521.2	26523.1	26512.2	26509.2	26498.0	26491.0	26472.8	26459.0	26438.7
12.5°	25692.3	25697.2	25665.5	25685.7	25669.7	25706.9	25703.9	25747.6	25754.3	25809.7	25830.6
15°	23769.4	23763.5	23702.6	23740.9	23720.3	23801.9	23820.0	23929.7	23988.3	24129.1	24215.5
17.5°	20864.8	20849.1	20763.3	20810.1	20786.3	20906.4	20946.7	21122.0	21231.4	21458.1	21619.7
20°	17402.3	17372.2	17271.9	17326.6	17302.1	17438.5	17496.1	17708.0	17848.9	18149.3	18363.0
22.5°	13896.7	13849.3	13751.0	13802.0	13778.9	13920.3	13995.2	14207.8	14369.3	14677.6	14927.0
25°	10748.8	10706.5	10611.5	10647.2	10638.6	10758.3	10824.8	11025.9	11184.6	11478.3	11716.4
27.5°	8198.4	8154.3	8068.5	8093.9	8085.1	8187.0	8249.8	8417.8	8554.3	8801.5	9010.6
30°	6274.6	6221.5	6148.8	6162.7	6156.8	6239.3	6297.9	6439.4	6556.5	6765.4	6945.5
32.5°	4809.5	4756.1	4689.3	4695.8	4687.0	4751.8	4800.1	4923.1	5025.1	5202.8	5359.6
35°	3679.9	3742.2	3599.4	3689.9	3595.7	3734.0	3684.3	3761.1	3848.9	3998.6	4129.3
37.5°	2829.0	2785.5	2748.8	2744.9	2744.7	2776.8	2814.6	2888.6	2965.9	3077.4	3192.7
40°	2241.8	2211.4	2187.6	2185.8	2187.6	2210.3	2238.3	2289.5	2346.1	2426.2	2510.9
42.5°	1859.4	1839.2	1824.8	1823.8	1828.4	1844.5	1863.9	1894.3	1931.1	1983.1	2041.1
45°	1609.3	1598.1	1590.0	1589.7	1591.7	1600.1	1611.3	1630.3	1653.6	1686.0	1722.7
47.5°	1433.8	1431.1	1426.1	1426.3	1424.0	1427.5	1428.8	1439.4	1451.8	1476.2	1524.2
50°	1306.1	1306.1	1302.6	1302.4	1299.2	1299.0	1296.3	1300.5	1306.3	1321.4	1336.7
52.5°	1205.1	1204.7	1201.0	1200.2	1196.8	1196.6	1194.3	1196.0	1196.7	1204.3	1213.6
55°	1126.2	1123.8	1118.9	1117.3	1116.0	1118.0	1117.0	1117.1	1116.1	1119.4	1122.1
57.5°	1069.5	1066.5	1061.8	1060.4	1060.1	1062.4	1062.5	1061.7	1057.4	1054.5	1050.4
60°	1024.7	1021.6	1016.6	1015.3	1016.1	1019.3	1019.1	1016.4	1010.1	1004.6	998.1
62.5°	980.7	979.4	976.8	976.6	975.9	976.5	974.1	971.2	965.0	959.1	952.1
65°	921.6	922.2	920.4	920.7	918.3	918.0	914.5	911.7	905.4	900.1	892.9
67.5°	860.3	860.7	859.2	859.2	858.0	858.2	856.1	853.5	848.1	843.8	838.2
70°	809.7	811.0	810.1	810.3	808.9	808.4	805.1	802.6	797.0	793.4	788.5
72.5°	749.2	751.9	751.8	752.5	750.3	749.2	745.3	742.1	737.1	734.2	730.2
75°	683.9	687.5	688.4	690.0	686.9	685.2	680.9	678.4	674.3	672.6	670.0
77.5°	620.1	624.0	627.7	631.2	626.2	621.7	616.4	612.3	606.5	604.2	600.2
80°	548.5	555.4	563.6	570.5	561.6	552.5	543.7	537.2	529.5	526.3	521.2
82.5°	455.0	462.1	466.8	471.3	465.0	458.4	449.9	444.1	435.8	432.7	426.8
85°	345.7	354.5	357.3	359.7	355.7	352.2	344.1	333.3	328.1	319.8	315.5
87.5°	227.4	232.6	233.7	234.5	232.0	230.3	225.1	220.1	211.0	204.5	196.6
90°	117.3	118.9	115.1	114.4	113.0	115.2	111.7	111.8	106.1	105.2	100.3
92.5°	44.6	41.6	38.9	36.1	39.3	41.6	44.8	47.1	50.2	52.6	55.7
95°	61.1	57.9	54.8	51.6	54.1	56.7	59.3	61.8	64.4	66.9	69.4
97.5°	85.0	82.8	80.8	78.6	80.1	81.6	83.1	84.6	86.0	87.5	89.1
100°	108.9	107.2	105.6	103.9	103.9	103.9	103.9	103.9	103.9	103.9	103.9
102.5°	177.4	170.1	162.9	155.8	160.6	165.5	170.4	175.2	180.1	184.9	189.9
105°	338.9	319.3	299.5	279.9	299.0	318.0	337.1	356.1	375.2	394.4	413.5
107.5°	619.5	588.4	557.3	526.2	561.0	595.7	630.4	665.2	699.9	734.6	769.5
110°	928.3	898.6	868.9	839.3	876.1	913.0	949.8	986.7	1023.6	1060.5	1097.5



TEST NUMBER: P1444815  
 CATALOG NUMBER: EHBR1-30-UNV-TA-L940-UPL36

**CANDELA DISTRIBUTION (continued):**

	82.5°	85°	87.5°	90°	92.5°	95°	97.5°	100°	102.5°	105°	107.5°
112.5°	1134.7	1120.3	1106.0	1091.5	1115.3	1138.9	1162.7	1186.5	1210.3	1234.1	1257.8
115°	1188.3	1187.5	1186.6	1185.8	1197.0	1208.3	1219.4	1230.8	1242.1	1253.3	1264.7
117.5°	1122.5	1130.5	1138.6	1146.6	1150.2	1153.7	1157.5	1161.1	1164.8	1168.6	1172.4
120°	1005.2	1015.7	1026.5	1037.3	1035.8	1034.3	1032.9	1031.4	1030.3	1028.9	1027.8
122.5°	867.6	878.3	889.1	899.8	896.6	893.4	890.4	887.3	884.3	881.2	878.4
125°	739.4	748.3	757.2	766.3	763.1	759.9	756.9	754.0	751.0	748.0	745.3
127.5°	637.7	643.2	648.7	654.3	652.8	651.3	650.1	648.7	647.6	646.5	645.4
130°	567.7	570.3	572.9	575.5	575.9	576.3	576.9	577.5	578.3	579.0	579.9
132.5°	525.9	526.3	526.9	527.6	529.3	530.9	532.9	534.8	536.9	538.9	541.4
135°	501.1	500.5	500.0	499.6	502.2	504.6	507.4	510.1	513.1	516.0	519.2
137.5°	488.3	487.3	486.4	485.4	487.9	490.4	493.2	495.9	498.8	501.8	505.0
140°	481.6	480.6	480.1	479.2	481.8	484.3	487.0	489.7	492.7	495.6	498.7
142.5°	475.7	474.8	474.2	473.6	475.7	478.0	480.6	483.1	485.8	488.3	491.2
145°	475.0	474.3	473.8	473.4	475.0	476.6	478.5	480.4	482.3	484.2	486.5
147.5°	470.3	469.9	469.7	469.5	470.8	471.9	473.3	474.6	476.1	477.6	479.2
150°	463.8	463.6	463.5	463.5	464.2	465.0	465.9	466.7	467.8	468.7	469.9
152.5°	453.5	453.2	453.4	453.3	454.0	454.8	455.7	456.4	457.3	458.2	459.2
155°	445.5	445.2	445.0	444.7	445.0	445.1	445.6	445.8	446.4	446.6	447.2
157.5°	440.5	440.1	439.9	439.6	439.6	439.6	439.6	439.6	439.9	439.8	440.0
160°	435.6	435.0	434.5	434.1	434.3	434.3	434.7	434.7	435.1	435.3	435.6
162.5°	434.9	434.5	434.3	434.0	433.8	433.4	433.2	432.8	432.7	432.5	432.4
165°	433.6	432.9	432.5	431.9	431.9	431.8	431.8	431.7	431.7	431.6	431.8
167.5°	435.6	435.0	434.4	433.9	433.5	433.0	432.7	432.2	431.8	431.4	431.2
170°	435.4	434.8	434.3	433.9	433.7	433.4	433.3	433.1	433.0	432.9	432.9
172.5°	438.7	438.2	437.8	437.4	437.2	437.0	436.9	436.8	436.8	436.8	436.7
175°	440.7	440.5	440.4	440.3	440.0	439.8	439.5	439.3	439.1	438.8	438.5
177.5°	441.4	441.0	440.9	440.7	440.6	440.6	440.6	440.6	440.6	440.5	440.4
180°	440.8	440.8	440.8	440.8	440.8	440.8	440.8	440.8	440.8	440.8	440.8



TEST NUMBER: P1444815  
 CATALOG NUMBER: EHBR1-30-UNV-TA-L940-UPL36

**CANDELA DISTRIBUTION (continued):**

	110°	112.5°	115°	117.5°	120°	122.5°	125°	127.5°	130°	132.5°	135°
0°	24483.0	24483.0	24483.0	24483.0	24483.0	24483.0	24483.0	24483.0	24483.0	24483.0	24483.0
2.5°	24496.5	24490.1	24473.1	24464.7	24449.1	24441.2	24429.0	24421.0	24411.2	24403.8	24400.0
5°	25175.2	25143.9	25081.1	25042.4	24974.7	24930.1	24862.7	24813.4	24743.9	24692.6	24626.9
7.5°	26058.3	26010.2	25929.8	25868.8	25774.0	25701.5	25595.1	25509.9	25392.4	25294.7	25174.6
10°	26417.8	26389.8	26353.6	26314.4	26261.9	26210.4	26137.7	26063.6	25965.0	25866.8	25738.5
12.5°	25886.4	25912.9	25965.0	25989.3	26029.1	26042.6	26060.8	26052.3	26036.1	25996.1	25937.9
15°	24381.5	24491.8	24666.1	24786.5	24955.3	25073.9	25230.8	25331.8	25448.2	25517.7	25583.7
17.5°	21906.1	22119.3	22426.8	22672.0	23001.3	23269.0	23597.0	23854.7	24152.2	24380.5	24623.5
20°	18735.4	19034.0	19458.3	19818.8	20295.9	20700.4	21218.8	21652.9	22159.4	22581.6	23037.3
22.5°	15322.9	15674.1	16160.3	16595.0	17164.8	17673.7	18323.0	18897.1	19581.9	20195.2	20873.8
25°	12103.5	12447.7	12943.1	13393.2	14008.2	14568.8	15278.2	15936.8	16731.4	17472.4	18323.0
27.5°	9342.7	9648.5	10083.9	10489.1	11052.4	11602.7	12322.7	13025.1	13872.9	14669.1	15585.9
30°	7215.2	7463.3	7812.2	8138.1	8590.3	9040.4	9681.8	10331.2	11174.9	12000.1	12939.9
32.5°	5591.6	5803.1	6094.4	6358.9	6707.4	7046.7	7519.0	8038.1	8778.1	9568.5	10477.2
35°	4328.5	4509.4	4757.4	4985.2	5271.8	5541.2	5893.7	6264.1	6828.9	7493.7	8306.9
37.5°	3450.9	3524.7	3701.6	3888.3	4126.4	4347.7	4623.4	4897.4	5301.4	5826.0	6490.3
40°	2624.4	2741.6	2885.5	3032.6	3212.8	3390.4	3692.9	3838.5	4104.5	4481.0	4996.7
42.5°	2117.5	2199.9	2301.3	2403.6	2529.1	2652.8	2805.7	2961.6	3160.4	3415.5	3782.3
45°	1772.0	1825.7	1891.1	1959.2	2041.7	2126.0	2228.5	2335.4	2470.3	2627.1	2849.8
47.5°	1541.1	1570.8	1613.5	1660.0	1716.6	1775.0	1841.6	1909.8	1993.5	2086.5	2213.3
50°	1360.9	1385.7	1418.9	1450.0	1489.0	1548.9	1575.3	1613.0	1663.3	1718.0	1788.9
52.5°	1230.6	1247.1	1267.9	1285.8	1310.5	1332.8	1362.3	1388.2	1423.0	1455.9	1501.7
55°	1129.1	1135.0	1146.9	1158.3	1175.4	1190.7	1210.9	1227.8	1250.1	1269.7	1298.6
57.5°	1050.6	1051.2	1056.7	1062.6	1073.6	1083.2	1097.1	1108.3	1123.7	1136.2	1153.6
60°	994.3	991.3	992.4	994.4	1000.7	1006.9	1015.8	1023.0	1032.7	1039.8	1049.6
62.5°	947.4	942.6	941.6	941.1	944.1	946.4	951.2	954.8	960.2	963.3	968.5
65°	888.1	882.6	880.4	877.9	878.8	878.1	879.8	879.9	882.7	883.4	886.4
67.5°	834.4	829.8	827.0	823.6	822.0	819.6	818.5	816.1	815.7	813.7	813.2
70°	785.4	780.9	778.5	775.3	773.7	770.5	768.4	764.4	762.1	758.4	756.3
72.5°	728.7	726.1	725.5	723.2	722.7	720.9	720.1	717.3	715.6	712.4	710.7
75°	669.5	667.3	667.2	665.0	664.8	662.7	662.1	659.1	657.6	654.4	653.0
77.5°	598.9	595.8	594.9	592.3	593.0	591.9	592.8	590.5	589.5	586.4	585.4
80°	519.4	515.4	513.7	510.4	511.3	509.8	511.3	511.1	512.3	509.8	509.3
82.5°	425.2	420.8	420.0	417.7	419.2	419.4	422.8	420.9	421.7	419.3	420.3
85°	309.4	306.1	301.6	301.0	298.0	301.1	297.2	299.8	295.5	298.5	294.5
87.5°	191.8	185.1	181.6	176.7	175.0	170.3	168.4	165.1	166.0	164.5	165.4
90°	100.7	96.5	98.1	96.2	98.7	97.4	100.7	100.6	104.3	104.3	108.3
92.5°	58.1	60.9	66.0	71.3	76.2	81.2	86.3	91.6	96.5	101.7	106.7
95°	72.0	74.5	81.3	88.0	94.8	101.6	108.4	115.2	122.0	128.8	135.6
97.5°	90.6	92.0	98.8	105.6	112.4	119.2	125.9	132.9	139.7	146.4	153.2
100°	103.9	104.0	123.3	142.5	161.7	181.1	200.4	219.7	239.1	258.3	277.6
102.5°	194.7	199.6	248.3	297.1	345.7	394.5	443.3	492.1	540.7	589.6	638.5
105°	432.5	451.7	526.0	600.4	674.7	749.1	823.6	898.1	972.5	1046.9	1121.3
107.5°	804.2	839.0	906.2	973.5	1040.6	1107.9	1175.2	1242.4	1309.6	1377.0	1444.3
110°	1134.4	1171.3	1216.3	1261.4	1306.4	1351.4	1396.4	1441.5	1486.7	1531.8	1577.0



TEST NUMBER: P1444815  
 CATALOG NUMBER: EHBR1-30-UNV-TA-L940-UPL36

**CANDELA DISTRIBUTION (continued):**

	110°	112.5°	115°	117.5°	120°	122.5°	125°	127.5°	130°	132.5°	135°
112.5°	1281.6	1305.5	1331.7	1358.0	1384.2	1410.5	1436.7	1463.0	1489.4	1515.8	1542.2
115°	1276.2	1287.4	1297.5	1307.8	1317.9	1328.2	1338.5	1348.9	1359.3	1369.6	1380.0
117.5°	1176.0	1180.0	1181.5	1183.1	1184.7	1186.5	1188.1	1189.8	1191.7	1193.4	1195.1
120°	1026.5	1025.3	1023.5	1021.7	1020.1	1018.5	1016.9	1015.3	1013.9	1012.4	1010.7
122.5°	875.5	872.8	871.0	869.4	867.9	866.4	864.8	863.5	862.1	860.7	859.3
125°	742.5	739.8	741.2	742.7	744.2	745.8	747.3	748.9	750.5	752.2	753.9
127.5°	644.3	643.5	647.3	651.1	655.0	659.0	663.1	667.2	671.1	675.3	679.2
130°	581.0	582.0	586.9	592.0	597.0	602.1	607.3	612.5	617.5	622.6	627.7
132.5°	543.5	546.0	550.6	555.5	560.5	565.4	570.3	575.2	580.2	585.3	589.9
135°	522.4	525.5	529.9	534.4	538.9	543.4	547.8	552.5	556.8	561.3	565.7
137.5°	508.0	511.3	514.9	518.4	521.9	525.6	529.3	532.9	536.3	540.0	543.5
140°	501.9	505.0	507.0	509.1	511.2	513.2	515.1	517.2	519.2	521.3	523.3
142.5°	494.0	497.0	498.2	499.5	500.7	502.3	503.6	505.0	506.1	507.3	508.5
145°	488.6	490.8	490.8	491.1	491.2	491.4	491.4	491.6	491.5	491.7	491.7
147.5°	480.8	482.6	482.2	482.1	481.9	481.7	481.5	481.3	480.9	480.7	480.4
150°	470.9	472.2	471.5	471.0	470.4	469.9	469.2	468.7	468.1	467.6	466.9
152.5°	460.1	461.2	460.3	459.9	459.1	458.5	457.7	457.2	456.4	455.8	455.2
155°	447.5	448.0	447.6	447.3	446.8	446.5	446.1	446.0	445.6	445.3	445.0
157.5°	440.2	440.3	440.1	439.8	439.6	439.5	439.2	439.1	439.0	439.0	439.0
160°	435.7	436.1	435.8	435.5	435.4	435.2	434.9	434.9	434.8	434.9	434.9
162.5°	432.1	432.0	431.7	431.5	431.3	431.2	431.1	431.2	431.0	431.1	431.2
165°	431.9	432.1	431.4	431.3	430.8	430.5	430.1	430.0	429.8	429.7	429.5
167.5°	430.9	430.7	430.7	430.8	430.8	430.9	431.0	431.4	431.4	431.8	431.8
170°	432.8	432.9	432.7	432.6	432.3	432.2	432.1	432.0	431.8	431.8	431.7
172.5°	436.7	436.7	436.2	435.8	435.4	435.1	434.6	434.3	433.9	433.6	433.1
175°	438.2	438.1	437.9	437.6	437.4	437.1	436.8	436.5	436.3	436.0	435.8
177.5°	440.3	440.1	440.0	440.0	439.9	439.8	439.8	439.7	439.7	439.7	439.6
180°	440.8	440.8	440.8	440.8	440.8	440.8	440.8	440.8	440.8	440.8	440.8



TEST NUMBER: P1444815  
 CATALOG NUMBER: EHBR1-30-UNV-TA-L940-UPL36

**CANDELA DISTRIBUTION (continued):**

	137.5°	140°	142.5°	145°	147.5°	150°	152.5°	155°	157.5°	160°	162.5°
0°	24483.0	24483.0	24483.0	24483.0	24483.0	24483.0	24483.0	24483.0	24483.0	24483.0	24483.0
2.5°	24395.0	24394.8	24392.4	24393.6	24394.0	24395.7	24397.8	24400.0	24400.4	24402.1	24402.5
5°	24577.6	24517.3	24472.7	24423.6	24386.7	24353.4	24331.3	24313.7	24306.9	24308.6	24312.7
7.5°	25072.7	24948.2	24845.3	24728.5	24631.0	24527.8	24442.3	24360.9	24301.7	24257.5	24232.8
10°	25616.0	25464.2	25319.1	25150.0	24989.5	24818.3	24663.2	24507.0	24376.9	24263.8	24180.8
12.5°	25857.1	25749.8	25624.3	25464.7	25293.1	25095.5	24896.0	24682.1	24483.2	24298.5	24149.7
15°	25601.8	25602.0	25556.2	25479.7	25360.4	25202.5	25012.4	24789.5	24554.8	24315.4	24096.6
17.5°	24791.6	24944.4	25029.4	25083.3	25066.7	25008.5	24887.6	24716.4	24497.6	24242.5	23975.6
20°	23400.0	23760.7	24017.7	24248.9	24378.5	24464.5	24456.0	24386.3	24230.5	24013.6	23735.6
22.5°	21450.9	22056.1	22533.6	22978.9	23291.2	23545.3	23666.1	23717.4	23646.7	23495.7	23234.7
25°	19083.4	19906.2	20608.5	21290.0	21801.2	22240.5	22504.6	22690.6	22705.4	22626.4	22393.5
27.5°	16452.6	17423.9	18312.7	19218.5	19937.4	20569.0	20983.4	21286.7	21383.0	21370.4	21158.9
30°	13825.2	14844.9	15824.7	16880.8	17770.4	18577.3	19124.7	19534.9	19693.0	19723.3	19519.8
32.5°	11343.9	12349.5	13326.4	14430.6	15409.6	16334.4	16981.1	17468.4	17652.3	17695.5	17472.4
35°	9092.0	10019.8	10948.1	12018.3	12991.6	13949.2	14630.7	15140.9	15312.6	15341.5	15083.2
37.5°	7139.2	7929.6	8738.6	9698.8	10592.6	11492.0	12139.5	12619.0	12744.0	12736.2	12443.9
40°	5494.9	6109.5	6759.5	7550.0	8293.0	9053.4	9600.1	9996.5	10062.1	10013.5	9706.4
42.5°	4131.8	4575.7	5047.0	5637.0	6188.5	6757.4	7155.2	7449.5	7458.8	7381.9	7106.2
45°	3078.3	3511.3	3708.9	4065.6	4420.8	4799.2	5042.1	5223.8	5195.7	5128.0	4918.5
47.5°	2346.6	2513.0	2689.6	2910.7	3117.7	3547.0	3515.2	3807.1	3596.8	3740.2	3424.6
50°	1863.5	1956.5	2051.6	2169.0	2277.0	2389.3	2459.5	2511.8	2505.0	2482.5	2422.0
52.5°	1585.4	1614.1	1660.9	1727.7	1788.1	1848.8	1888.7	1921.1	1921.8	1912.8	1882.1
55°	1325.0	1361.5	1395.1	1438.8	1513.1	1524.5	1581.8	1570.2	1574.8	1558.8	1575.1
57.5°	1168.3	1189.4	1208.4	1234.4	1255.9	1280.9	1295.7	1310.0	1308.6	1305.5	1290.0
60°	1057.1	1068.9	1079.4	1094.6	1106.3	1120.5	1127.3	1134.6	1132.2	1126.9	1113.0
62.5°	971.5	978.9	984.8	994.6	1001.8	1010.6	1014.2	1017.3	1014.2	1009.2	997.0
65°	887.0	891.8	895.6	903.0	908.0	915.5	918.5	921.4	918.6	914.7	905.4
67.5°	810.8	811.3	810.9	813.9	815.5	820.0	821.3	823.5	820.1	816.8	808.9
70°	753.0	751.8	750.4	751.6	751.8	754.0	754.4	754.0	750.2	744.3	735.7
72.5°	707.9	707.2	706.1	707.1	707.1	709.1	708.5	707.5	702.6	697.1	688.5
75°	649.7	649.4	647.1	647.2	645.4	646.0	643.7	642.4	637.0	632.2	624.7
77.5°	581.8	580.7	577.5	576.3	572.9	571.5	567.0	564.9	559.4	555.5	549.0
80°	506.0	504.8	500.7	498.4	492.9	489.5	483.0	479.2	473.0	469.3	462.9
82.5°	418.2	418.7	414.6	411.8	404.0	398.0	389.2	384.6	377.7	374.1	367.4
85°	297.5	293.2	295.4	295.2	290.4	285.2	278.1	273.2	267.3	263.8	259.3
87.5°	163.1	164.2	162.9	161.9	158.5	155.9	150.4	147.5	143.2	141.1	137.6
90°	100.9	97.7	90.6	87.5	80.6	76.0	68.4	64.5	57.2	55.3	51.1
92.5°	101.0	95.2	89.7	83.8	78.3	72.5	66.8	61.0	55.3	53.3	51.5
95°	127.3	119.2	110.9	102.7	94.4	86.2	78.0	69.8	61.5	59.8	58.1
97.5°	143.6	133.8	124.1	114.4	104.7	94.9	85.3	75.6	65.9	64.8	63.7
100°	255.3	232.8	210.4	187.9	165.6	143.2	120.8	98.4	76.0	74.7	73.5
102.5°	584.0	529.7	475.4	421.1	366.8	312.4	258.1	203.7	149.3	141.5	133.7
105°	1039.1	956.8	874.7	792.5	710.1	627.8	545.7	463.3	381.0	354.7	328.2
107.5°	1367.0	1289.6	1212.4	1135.1	1057.7	980.5	903.0	825.6	748.2	701.7	655.2
110°	1515.6	1454.1	1392.9	1331.5	1270.1	1208.7	1147.3	1085.8	1024.4	984.3	944.3



TEST NUMBER: P1444815  
 CATALOG NUMBER: EHBR1-30-UNV-TA-L940-UPL36

**CANDELA DISTRIBUTION (continued):**

	137.5°	140°	142.5°	145°	147.5°	150°	152.5°	155°	157.5°	160°	162.5°
112.5°	1497.2	1452.2	1407.3	1362.3	1317.3	1272.2	1227.2	1182.0	1136.9	1112.6	1088.3
115°	1352.9	1325.7	1298.7	1271.5	1244.4	1217.2	1190.1	1162.7	1135.5	1122.6	1109.8
117.5°	1181.4	1167.4	1153.7	1139.6	1125.7	1111.6	1097.8	1083.7	1069.7	1065.2	1060.6
120°	1006.7	1002.5	998.0	993.7	989.4	985.0	980.6	976.2	971.7	972.2	972.6
122.5°	860.7	862.2	863.8	865.1	866.8	868.1	869.6	870.8	872.2	875.6	878.8
125°	757.7	761.5	765.4	769.3	773.2	776.9	780.8	784.4	788.4	791.6	795.1
127.5°	683.6	687.8	692.3	696.5	701.0	705.1	709.4	713.5	717.9	720.9	724.0
130°	631.6	635.2	639.0	642.6	646.4	650.1	653.7	657.5	661.2	663.4	665.8
132.5°	593.3	596.6	600.1	603.1	606.6	609.8	613.2	616.5	619.8	621.4	623.2
135°	568.3	570.6	573.1	575.4	578.1	580.4	582.9	585.4	588.0	589.0	590.2
137.5°	545.6	547.3	549.5	551.4	553.5	555.4	557.6	559.5	561.9	562.2	562.8
140°	525.4	527.5	529.6	531.8	534.0	536.1	538.5	540.7	543.1	543.4	544.1
142.5°	510.2	511.8	513.4	515.0	516.8	518.4	520.2	522.2	524.1	524.4	525.0
145°	493.8	495.7	497.8	499.7	501.6	503.7	506.1	508.3	510.6	510.7	511.0
147.5°	482.1	483.7	485.6	487.3	489.0	490.8	492.9	494.8	496.9	497.0	497.2
150°	468.9	470.7	472.5	474.3	476.3	478.3	480.4	482.6	485.0	485.5	486.0
152.5°	457.2	459.1	461.2	463.3	465.5	467.7	470.0	472.3	474.8	475.1	475.8
155°	447.1	449.0	451.2	453.3	455.5	457.5	460.0	462.2	464.5	465.3	465.8
157.5°	440.9	442.5	444.5	446.4	448.2	450.2	452.3	454.3	456.4	457.0	457.5
160°	436.6	438.1	439.8	441.6	443.2	445.0	446.8	448.5	450.4	450.9	451.5
162.5°	432.8	434.4	436.2	437.6	439.5	441.1	443.0	444.6	446.4	446.9	447.4
165°	430.7	431.9	433.1	434.2	435.6	436.8	438.2	439.4	440.8	441.2	441.9
167.5°	432.9	433.8	434.6	435.5	436.7	437.6	438.6	439.6	440.7	441.1	441.8
170°	432.7	433.5	434.2	435.2	436.1	437.0	437.9	438.7	439.8	440.3	440.9
172.5°	433.8	434.1	434.9	435.4	436.0	436.5	437.2	437.8	438.4	439.2	439.7
175°	436.2	436.5	436.8	436.9	437.3	437.6	438.0	438.3	438.6	439.2	439.6
177.5°	439.7	439.9	440.2	440.4	440.8	440.9	441.3	441.5	441.8	442.4	443.2
180°	440.8	440.8	440.8	440.8	440.8	440.8	440.8	440.8	440.8	440.8	440.8



TEST NUMBER: P1444815  
 CATALOG NUMBER: EHBR1-30-UNV-TA-L940-UPL36

**CANDELA DISTRIBUTION (continued):**

	165°	167.5°	170°	172.5°	175°	177.5°	180°	182.5°	185°	187.5°	190°
0°	24483.0	24483.0	24483.0	24483.0	24483.0	24483.0	24483.0	24483.0	24483.0	24483.0	24483.0
2.5°	24401.7	24401.5	24400.6	24399.5	24398.4	24399.1	24400.2	24403.0	24407.9	24415.0	24424.2
5°	24316.0	24321.1	24323.9	24324.2	24321.6	24320.1	24322.5	24329.2	24342.7	24365.4	24396.1
7.5°	24226.2	24232.4	24241.8	24248.9	24250.3	24248.5	24248.9	24259.4	24284.4	24328.5	24390.6
10°	24130.3	24112.1	24121.7	24139.3	24153.3	24155.8	24157.6	24170.0	24206.5	24273.2	24372.8
12.5°	24041.8	23984.0	23972.9	23988.8	24010.0	24016.8	24014.9	24020.2	24063.0	24151.3	24290.1
15°	23925.2	23816.6	23779.5	23783.6	23809.8	23819.3	23812.4	23801.9	23843.5	23951.4	24130.9
17.5°	23736.7	23561.6	23493.3	23490.3	23521.0	23529.2	23512.3	23479.6	23520.6	23655.3	23878.3
20°	23450.1	23191.5	23063.1	23042.7	23075.9	23066.2	23032.6	22983.2	23037.1	23200.8	23465.9
22.5°	22934.8	22607.2	22387.7	22316.9	22356.8	22330.1	22281.0	22218.1	22289.6	22475.7	22770.9
25°	22092.8	21714.2	21413.8	21245.2	21276.9	21229.3	21175.8	21099.4	21184.8	21398.3	21723.4
27.5°	20855.1	20417.9	20045.5	19766.4	19776.7	19714.3	19652.7	19553.8	19660.4	19913.1	20279.7
30°	19209.3	18703.4	18249.9	17870.6	17836.7	17776.2	17713.1	17583.4	17716.7	18019.2	18447.6
32.5°	17142.5	16580.8	16056.8	15577.3	15486.8	15427.8	15371.6	15222.3	15396.8	15749.6	16241.7
35°	14725.4	14127.1	13559.0	13011.3	12861.5	12802.4	12753.3	12610.2	12828.1	13211.9	13743.4
37.5°	12072.4	11461.2	10897.2	10335.5	10123.7	10043.6	10007.9	9914.2	10165.7	10545.3	11078.9
40°	9348.7	8780.4	8274.8	7778.7	7537.3	7414.7	7396.0	7378.9	7622.0	7951.4	8435.8
42.5°	6800.8	6342.4	5952.5	5573.3	5354.4	5187.0	5186.9	5237.8	5456.6	5703.3	6076.9
45°	4704.3	4396.6	4148.2	3894.8	3962.6	3628.9	3825.0	3724.3	3832.4	3991.5	4234.4
47.5°	3233.7	3065.9	2929.4	2787.8	2684.6	2586.1	2594.7	2658.3	2760.1	2854.5	2980.9
50°	2356.9	2271.4	2201.9	2128.3	2077.0	2033.5	2036.0	2063.5	2117.1	2166.8	2233.0
52.5°	1846.8	1799.6	1761.8	1721.2	1694.2	1672.7	1673.8	1687.1	1716.1	1744.5	1782.4
55°	1522.2	1516.5	1467.4	1430.9	1417.0	1402.5	1405.1	1410.4	1430.1	1446.8	1471.8
57.5°	1275.6	1253.5	1238.8	1219.6	1210.8	1200.6	1202.9	1204.9	1218.0	1229.2	1247.3
60°	1101.5	1085.8	1075.4	1062.4	1056.6	1050.1	1051.5	1052.8	1061.1	1068.4	1081.4
62.5°	985.8	971.8	962.8	952.6	948.6	944.2	945.2	945.5	950.8	956.1	966.0
65°	897.0	886.0	878.4	869.7	865.4	860.9	861.4	861.4	865.8	869.7	877.1
67.5°	803.2	794.9	789.9	783.0	780.2	775.5	775.4	774.0	776.9	778.4	783.4
70°	727.9	719.4	713.2	706.6	702.9	698.8	698.9	699.0	702.4	705.9	712.3
72.5°	681.3	673.3	667.7	661.9	658.5	655.0	654.4	654.0	656.4	658.4	662.7
75°	619.7	613.3	610.0	604.5	601.8	597.9	597.3	595.5	596.7	597.1	600.3
77.5°	545.0	538.9	536.3	530.8	528.4	524.1	523.7	521.6	522.6	521.9	524.3
80°	459.8	454.3	452.8	448.2	447.2	443.1	442.4	440.0	440.7	438.8	439.7
82.5°	364.6	359.6	358.5	354.3	354.3	350.6	350.4	346.7	346.7	343.5	338.5
85°	256.9	253.1	251.6	248.2	247.2	244.2	242.6	239.1	237.8	235.5	234.9
87.5°	135.6	133.2	131.1	129.5	126.5	121.1	120.6	116.9	117.2	114.6	114.8
90°	49.6	45.7	44.3	40.7	39.1	36.2	34.8	35.7	37.0	37.9	39.4
92.5°	49.7	47.7	45.8	43.9	42.0	40.1	38.2	40.1	42.0	43.9	45.8
95°	56.4	54.7	53.0	51.3	49.6	47.9	46.2	47.9	49.6	51.4	53.1
97.5°	62.7	61.6	60.6	59.4	58.4	57.3	56.3	57.4	58.5	59.5	60.7
100°	72.2	70.9	69.7	68.4	67.1	65.9	64.6	66.1	67.3	68.6	69.9
102.5°	126.0	118.1	110.2	102.4	94.6	86.7	78.9	86.7	94.6	102.5	110.3
105°	301.8	275.4	248.8	222.4	195.9	169.5	143.0	169.6	196.0	222.5	249.0
107.5°	608.6	562.2	515.7	469.2	422.5	376.0	329.4	376.1	422.7	469.3	515.9
110°	904.1	863.9	823.9	783.7	743.5	703.3	663.1	703.4	743.6	783.9	824.1



TEST NUMBER: P1444815  
 CATALOG NUMBER: EHBR1-30-UNV-TA-L940-UPL36

**CANDELA DISTRIBUTION (continued):**

	165°	167.5°	170°	172.5°	175°	177.5°	180°	182.5°	185°	187.5°	190°
112.5°	1063.8	1039.3	1014.9	990.5	965.9	941.6	917.0	941.8	966.3	991.0	1015.5
115°	1096.8	1083.9	1071.1	1058.2	1045.1	1032.2	1019.0	1032.4	1045.6	1058.7	1071.9
117.5°	1056.0	1051.5	1046.8	1042.2	1037.6	1032.9	1028.2	1033.1	1038.0	1043.1	1047.7
120°	972.9	973.5	973.8	974.0	974.4	974.7	974.9	975.1	975.1	975.1	975.0
122.5°	882.1	885.2	888.4	891.6	894.8	897.8	900.8	898.2	895.5	892.8	889.9
125°	798.2	801.7	804.9	808.2	811.4	814.6	817.5	815.1	812.4	809.6	806.7
127.5°	727.0	729.9	732.8	735.9	738.6	741.3	743.9	741.9	739.5	737.2	734.7
130°	667.9	670.3	672.3	674.4	676.4	678.3	680.1	678.9	677.4	676.1	674.3
132.5°	624.8	626.4	628.1	629.7	631.0	632.5	633.5	633.1	632.2	631.5	630.4
135°	591.2	592.2	593.3	594.4	595.0	595.9	596.3	596.5	596.3	596.1	595.6
137.5°	563.2	563.8	564.1	564.4	564.6	564.8	564.7	565.4	565.8	566.4	566.5
140°	544.5	545.1	545.4	545.8	546.0	546.3	546.1	547.0	547.3	547.8	547.9
142.5°	525.4	526.0	526.3	526.8	526.8	527.1	527.0	527.8	528.1	528.6	528.8
145°	511.4	511.6	511.7	511.8	511.8	511.8	511.4	512.4	513.1	513.6	514.2
147.5°	497.5	497.8	497.7	497.8	497.8	497.7	497.4	498.2	499.0	499.5	500.1
150°	486.6	487.2	487.6	488.0	488.3	488.6	488.6	489.1	489.4	489.8	489.9
152.5°	476.2	476.6	477.1	477.5	477.7	477.8	477.9	478.4	478.9	479.3	479.5
155°	466.4	467.0	467.6	468.2	468.5	469.0	469.3	469.6	469.9	470.1	470.3
157.5°	458.0	458.6	459.1	459.7	460.0	460.6	461.0	461.4	461.6	462.0	462.2
160°	451.8	452.5	452.9	453.4	453.9	454.4	454.7	455.1	455.5	455.8	456.1
162.5°	447.8	448.4	448.7	449.2	449.7	450.2	450.5	450.9	451.3	451.7	451.9
165°	442.6	443.3	443.8	444.5	445.2	445.9	446.4	446.5	446.6	446.7	446.8
167.5°	442.3	443.0	443.6	444.2	444.7	445.4	446.0	446.2	446.1	446.2	446.3
170°	441.3	441.9	442.5	443.0	443.6	444.2	444.6	444.7	444.7	444.8	444.9
172.5°	440.4	441.1	441.8	442.5	443.2	443.7	444.4	444.3	444.1	443.8	443.6
175°	440.2	440.9	441.4	442.0	442.5	443.1	443.7	443.4	443.3	442.9	442.7
177.5°	443.9	444.8	445.4	446.1	446.8	447.5	448.2	447.6	447.0	446.4	445.8
180°	440.8	440.8	440.8	440.8	440.8	440.8	440.8	440.8	440.8	440.8	440.8



TEST NUMBER: P1444815  
 CATALOG NUMBER: EHBR1-30-UNV-TA-L940-UPL36

**CANDELA DISTRIBUTION (continued):**

	192.5°	195°	197.5°	200°	202.5°	205°	207.5°	210°	212.5°	215°	217.5°
0°	24483.0	24483.0	24483.0	24483.0	24483.0	24483.0	24483.0	24483.0	24483.0	24483.0	24483.0
2.5°	24437.2	24449.5	24468.2	24485.1	24510.7	24530.8	24561.1	24584.0	24618.1	24640.3	24677.3
5°	24439.5	24487.3	24550.2	24611.5	24685.3	24752.2	24835.4	24906.3	24990.0	25058.2	25143.7
7.5°	24474.0	24566.2	24676.7	24788.1	24914.0	25031.8	25164.5	25284.7	25415.9	25527.1	25648.5
10°	24499.5	24641.7	24804.6	24968.5	25140.9	25301.2	25463.0	25602.8	25733.4	25841.0	25936.0
12.5°	24464.9	24660.8	24869.8	25071.6	25263.4	25429.3	25568.5	25676.1	25750.2	25800.6	25812.4
15°	24347.4	24583.1	24810.4	25011.3	25170.5	25293.2	25356.8	25386.6	25354.6	25301.6	25185.1
17.5°	24127.9	24376.6	24579.7	24738.3	24822.4	24855.7	24803.0	24711.5	24532.6	24333.9	24047.1
20°	23725.6	23957.2	24104.6	24191.0	24168.5	24085.3	23886.6	23645.1	23287.8	22907.1	22404.7
22.5°	23019.7	23222.2	23300.7	23307.2	23169.8	22961.5	22603.1	22188.8	21625.3	21039.4	20318.8
25°	21960.2	22137.6	22150.0	22080.3	21829.0	21491.4	20965.1	20379.1	19613.3	18832.6	17929.6
27.5°	20523.2	20693.3	20651.7	20521.7	20172.9	19721.2	19047.3	18290.3	17346.1	16424.0	15425.2
30°	18716.9	18898.9	18850.0	18683.2	18268.4	17734.3	16941.5	16061.8	15013.7	14028.8	13016.7
32.5°	16555.3	16785.4	16751.5	16593.1	16160.1	15588.7	14728.4	13795.4	12723.0	11752.5	10768.0
35°	14098.3	14377.6	14392.1	14288.5	13886.5	13321.7	12472.2	11569.3	10542.0	9626.3	8716.8
37.5°	11451.2	11775.1	11841.5	11813.5	11480.5	10981.9	10207.9	9397.8	8487.9	7685.2	6907.3
40°	8789.5	9117.3	9230.9	9264.7	9018.9	8632.7	7997.4	7343.6	6601.7	5951.4	5333.8
42.5°	6362.1	6652.7	6762.5	6831.7	6678.2	6420.7	5957.3	5482.5	4939.0	4469.9	4020.2
45°	4418.6	4624.1	4707.7	4777.3	4693.7	4548.5	4255.9	3958.8	3600.1	3293.6	3003.4
47.5°	3089.3	3202.6	3257.8	3291.6	3259.2	3183.4	3024.2	2852.1	2649.6	2470.5	2298.3
50°	2289.8	2350.2	2379.1	2398.5	2375.0	2332.8	2246.7	2153.0	2041.8	1940.3	1841.1
52.5°	1814.7	1849.2	1866.4	1876.9	1863.4	1837.6	1787.5	1731.9	1665.2	1602.5	1569.5
55°	1528.7	1527.0	1566.6	1547.5	1566.6	1523.8	1514.9	1453.8	1398.4	1359.5	1317.3
57.5°	1260.7	1278.7	1286.3	1294.8	1289.3	1281.5	1260.1	1238.3	1209.1	1184.7	1158.6
60°	1091.3	1106.0	1114.4	1122.9	1122.4	1119.5	1107.1	1094.0	1075.8	1061.1	1045.4
62.5°	974.6	987.4	995.6	1003.8	1004.5	1003.3	994.0	984.8	972.5	963.2	952.4
65°	882.7	891.8	897.4	903.8	903.5	901.7	893.3	885.8	875.6	869.1	861.2
67.5°	786.7	793.5	797.9	803.9	805.1	805.5	800.8	797.3	792.3	790.5	787.8
70°	718.4	726.6	733.6	741.3	745.5	747.5	745.5	743.6	740.8	739.5	737.4
72.5°	666.7	673.7	679.1	686.1	690.0	692.8	691.2	690.3	687.7	687.4	685.9
75°	602.4	607.2	610.3	615.5	617.7	620.3	619.1	619.7	618.9	620.9	620.8
77.5°	525.2	528.7	530.2	534.0	534.4	537.6	538.2	541.9	544.6	550.4	553.5
80°	438.2	440.5	440.5	444.4	446.2	451.5	454.1	460.1	462.9	468.2	468.5
82.5°	340.4	337.8	340.4	338.8	343.8	349.8	350.6	355.8	356.9	360.3	357.7
85°	232.7	232.5	230.5	230.9	229.3	230.0	229.1	230.1	229.2	229.3	226.9
87.5°	111.5	112.5	110.0	110.9	108.5	109.7	107.5	109.2	106.7	107.0	103.4
90°	40.4	41.7	42.9	44.3	45.9	49.5	53.2	56.8	60.8	64.3	68.1
92.5°	47.7	49.7	51.6	53.6	55.4	61.1	66.9	72.6	78.4	84.0	89.8
95°	54.8	56.5	58.2	60.1	61.8	70.1	78.3	86.5	94.7	103.0	111.2
97.5°	61.9	63.0	64.0	65.1	66.2	75.9	85.7	95.4	105.2	114.9	124.6
100°	71.2	72.5	73.8	75.1	76.4	98.8	121.3	143.8	166.2	188.5	210.9
102.5°	118.3	126.1	134.0	142.0	149.8	204.2	258.6	313.0	367.3	421.8	476.1
105°	275.6	302.0	328.7	355.1	381.6	464.0	546.3	628.7	710.8	793.2	875.6
107.5°	562.5	609.1	655.8	702.4	748.9	826.5	903.9	981.2	1058.7	1136.1	1213.4
110°	864.5	904.5	945.0	985.2	1025.5	1086.9	1148.5	1209.9	1271.4	1332.9	1394.3



TEST NUMBER: P1444815  
 CATALOG NUMBER: EHBR1-30-UNV-TA-L940-UPL36

**CANDELA DISTRIBUTION (continued):**

	192.5°	195°	197.5°	200°	202.5°	205°	207.5°	210°	212.5°	215°	217.5°
112.5°	1040.1	1064.6	1089.2	1113.5	1138.1	1183.2	1228.6	1273.7	1318.8	1363.8	1408.9
115°	1084.9	1097.8	1110.9	1123.8	1137.0	1164.3	1191.6	1218.9	1246.3	1273.5	1300.9
117.5°	1052.6	1057.3	1062.1	1066.6	1071.4	1085.5	1099.7	1113.8	1127.9	1142.0	1156.1
120°	974.9	974.6	974.4	974.0	973.8	978.3	983.0	987.5	992.0	996.4	1000.8
122.5°	887.0	883.9	881.0	877.9	874.8	873.4	872.3	870.9	869.8	868.3	867.0
125°	803.7	800.7	797.6	794.4	791.2	787.5	783.9	780.3	776.5	772.7	769.0
127.5°	732.3	729.5	727.0	724.1	721.3	717.0	712.9	708.6	704.7	700.3	696.2
130°	672.7	670.8	669.0	666.8	665.0	661.2	657.7	654.1	650.5	646.8	643.3
132.5°	629.2	627.9	626.7	625.1	623.8	620.6	617.7	614.2	611.1	607.8	604.7
135°	595.1	594.5	594.0	593.1	592.3	589.8	587.6	585.2	582.9	580.5	578.2
137.5°	566.8	566.6	566.6	566.4	566.4	564.4	562.6	560.6	558.7	556.8	555.0
140°	548.2	548.1	548.2	548.0	547.9	545.8	543.8	541.7	539.6	537.5	535.4
142.5°	529.0	529.0	529.1	528.9	528.9	527.2	525.7	524.2	522.7	521.0	519.5
145°	514.5	514.8	515.1	515.2	515.6	513.5	511.7	509.6	507.9	506.0	504.1
147.5°	500.7	500.9	501.3	501.6	502.1	500.3	498.9	497.1	495.6	494.1	492.6
150°	490.0	490.1	490.3	490.2	490.2	488.5	486.9	485.1	483.5	481.8	480.2
152.5°	479.7	479.9	480.2	480.3	480.4	478.7	476.9	475.0	473.3	471.3	469.5
155°	470.5	470.6	470.7	470.7	470.7	469.0	467.3	465.5	463.8	462.0	460.3
157.5°	462.4	462.6	462.7	462.8	462.9	461.4	460.0	458.5	457.0	455.5	454.0
160°	456.3	456.6	456.8	456.9	457.1	455.8	454.7	453.2	452.1	450.7	449.3
162.5°	452.2	452.5	452.7	452.8	453.0	451.7	450.6	449.3	448.1	446.6	445.4
165°	447.0	446.9	446.9	446.8	446.8	446.0	445.2	444.4	443.6	442.5	441.7
167.5°	446.3	446.2	446.3	446.1	446.1	445.4	445.0	444.4	443.7	443.1	442.4
170°	444.8	444.8	444.7	444.5	444.5	443.8	443.3	442.7	442.3	441.4	440.8
172.5°	443.4	443.1	442.8	442.6	442.3	441.8	441.5	441.0	440.8	440.3	439.9
175°	442.3	442.1	441.8	441.5	441.1	441.0	440.8	440.7	440.5	440.2	440.0
177.5°	445.4	444.9	444.2	443.6	443.1	442.9	442.8	442.5	442.5	442.3	442.2
180°	440.8	440.8	440.8	440.8	440.8	440.8	440.8	440.8	440.8	440.8	440.8



TEST NUMBER: P1444815  
 CATALOG NUMBER: EHBR1-30-UNV-TA-L940-UPL36

**CANDELA DISTRIBUTION (continued):**

	220°	222.5°	225°	227.5°	230°	232.5°	235°	237.5°	240°	242.5°	245°
0°	24483.0	24483.0	24483.0	24483.0	24483.0	24483.0	24483.0	24483.0	24483.0	24483.0	24483.0
2.5°	24700.3	24547.8	24527.6	24538.3	24563.9	24573.3	24600.8	24608.3	24636.0	24642.8	24669.4
5°	25210.0	25008.3	25018.4	25066.9	25140.3	25184.1	25256.2	25293.9	25362.7	25394.0	25456.4
7.5°	25747.4	25589.0	25638.4	25720.2	25820.6	25890.1	25976.7	26033.2	26107.9	26154.2	26214.0
10°	26011.3	25967.9	26022.3	26086.6	26143.8	26188.7	26225.5	26254.8	26274.1	26292.2	26300.0
12.5°	25810.5	25877.7	25886.9	25880.6	25842.7	25813.8	25748.7	25704.5	25626.0	25578.2	25484.8
15°	25066.1	25213.7	25132.0	25008.2	24827.1	24676.1	24462.9	24304.1	24082.0	23931.5	23708.6
17.5°	23759.7	23946.0	23733.0	23446.6	23082.3	22770.6	22382.5	22074.5	21688.6	21407.9	21047.8
20°	21920.5	22094.6	21714.7	21239.9	20676.4	20202.1	19642.8	19196.6	18676.9	18290.3	17823.7
22.5°	19630.6	19754.6	19219.4	18579.3	17861.4	17268.9	16600.2	16065.2	15472.0	15030.1	14532.6
25°	17097.2	17130.7	16488.6	15751.3	14951.0	14285.2	13571.3	13008.8	12403.8	11955.9	11467.6
27.5°	14540.2	14491.2	13797.2	13015.4	12173.6	11481.5	10785.2	10258.1	9728.2	9324.7	8904.1
30°	12126.8	12008.0	11287.4	10483.8	9666.8	9046.4	8468.3	8045.0	7623.6	7303.4	6965.8
32.5°	9913.6	9745.9	9044.6	8291.7	7603.3	7124.5	6695.8	6375.5	6035.2	5764.8	5481.4
35°	7953.4	7774.7	7153.4	6515.1	5994.0	5641.1	5304.2	5041.4	4752.4	4524.4	4278.2
37.5°	6271.0	6124.5	5604.1	5101.9	4707.7	4434.3	4158.2	3943.5	3704.6	3604.3	3341.3
40°	4841.2	4738.8	4331.9	3961.6	3665.7	3537.2	3257.0	3056.4	2877.9	2730.7	2588.2
42.5°	3776.2	3740.0	3344.0	3055.2	2846.7	2684.9	2528.8	2402.0	2278.6	2177.2	2081.3
45°	2771.2	2742.5	2566.7	2400.0	2258.0	2144.8	2039.3	1952.1	1871.5	1804.6	1743.8
47.5°	2157.9	2148.7	2047.5	1944.2	1854.6	1782.0	1713.5	1655.6	1602.1	1557.4	1542.9
50°	1755.1	1753.9	1694.5	1630.8	1567.0	1525.0	1481.3	1447.0	1412.7	1385.9	1357.6
52.5°	1491.3	1484.9	1444.7	1405.3	1367.5	1339.9	1311.9	1290.1	1267.3	1250.8	1233.2
55°	1283.8	1290.6	1267.4	1243.9	1220.3	1203.1	1183.5	1169.0	1153.5	1143.0	1132.4
57.5°	1139.8	1148.7	1136.6	1123.2	1108.8	1097.6	1084.1	1074.1	1063.7	1057.0	1050.8
60°	1035.0	1044.7	1039.8	1033.1	1024.3	1017.5	1008.9	1003.4	996.7	992.9	989.5
62.5°	946.0	958.3	956.5	953.4	947.7	943.9	939.2	936.8	932.3	930.7	929.0
65°	857.3	871.1	870.8	869.2	866.1	865.0	862.1	861.6	859.3	860.2	860.0
67.5°	787.5	799.4	802.1	804.0	803.9	804.7	804.4	805.6	805.6	807.3	808.4
70°	737.1	745.5	747.5	749.5	750.1	751.7	751.7	752.7	752.4	753.9	754.0
72.5°	686.3	697.2	699.2	700.9	700.9	702.4	701.6	701.3	699.1	698.6	697.2
75°	622.9	637.0	640.0	642.1	642.4	643.7	641.8	640.6	637.0	635.5	633.0
77.5°	556.8	571.4	573.5	574.3	573.1	573.3	569.3	566.6	562.1	560.1	557.7
80°	470.7	492.2	493.9	492.6	489.2	488.6	484.7	482.2	476.6	474.8	472.6
82.5°	358.1	383.4	386.9	388.4	385.7	386.4	382.6	381.2	376.1	375.2	371.8
85°	226.1	251.4	255.6	254.9	252.2	251.5	249.3	250.1	249.6	251.0	251.7
87.5°	103.9	128.3	134.2	132.3	132.0	130.3	126.4	127.8	130.2	131.7	131.8
90°	71.8	82.9	86.5	83.9	78.9	76.0	71.3	68.8	64.4	61.9	57.5
92.5°	95.5	101.3	107.0	101.8	96.8	91.7	86.6	81.4	76.5	71.3	66.3
95°	119.5	127.5	135.8	129.0	122.2	115.4	108.6	101.9	95.1	88.3	81.6
97.5°	134.3	143.8	153.4	146.6	139.9	133.0	126.2	119.5	112.7	105.8	99.1
100°	233.4	255.5	277.8	258.5	239.2	220.0	200.7	181.4	162.1	142.9	123.5
102.5°	530.4	584.5	638.7	589.9	541.1	492.4	443.6	394.8	346.1	297.3	248.6
105°	957.7	1039.6	1121.8	1047.2	972.7	898.4	823.9	749.5	675.1	600.6	526.3
107.5°	1290.7	1367.6	1444.7	1377.4	1310.1	1242.9	1175.5	1108.3	1040.9	973.7	906.4
110°	1455.7	1516.3	1577.6	1532.3	1487.2	1442.0	1396.9	1351.8	1306.7	1261.7	1216.6



TEST NUMBER: P1444815  
 CATALOG NUMBER: EHBR1-30-UNV-TA-L940-UPL36

**CANDELA DISTRIBUTION (continued):**

	220°	222.5°	225°	227.5°	230°	232.5°	235°	237.5°	240°	242.5°	245°
112.5°	1453.9	1498.1	1542.8	1516.3	1490.0	1463.5	1437.2	1410.8	1384.6	1358.2	1332.2
115°	1327.9	1353.9	1380.7	1370.3	1359.9	1349.6	1339.1	1328.9	1318.5	1308.2	1298.1
117.5°	1170.1	1182.6	1196.1	1194.2	1192.5	1190.5	1188.9	1187.1	1185.5	1183.7	1182.2
120°	1005.2	1008.0	1012.0	1013.4	1014.9	1016.3	1017.9	1019.4	1021.0	1022.5	1024.2
122.5°	865.6	862.4	860.5	861.9	863.4	864.6	866.1	867.5	868.9	870.4	872.0
125°	765.3	759.5	755.1	753.5	751.9	750.3	748.6	746.9	745.5	743.9	742.4
127.5°	691.9	685.6	680.8	676.7	672.8	668.7	664.7	660.5	656.7	652.6	648.8
130°	639.8	633.8	629.5	624.3	619.5	614.1	609.2	604.0	599.0	593.8	588.8
132.5°	601.5	595.7	592.0	587.1	582.4	577.3	572.6	567.6	562.7	557.7	552.9
135°	575.8	570.8	567.9	563.4	559.2	554.6	550.1	545.8	541.4	536.7	532.5
137.5°	552.9	548.3	545.8	542.1	538.9	535.2	531.9	528.1	524.7	521.0	517.6
140°	533.3	528.3	525.6	523.7	521.9	519.8	518.0	515.9	514.1	512.0	510.1
142.5°	517.9	513.2	511.0	509.8	508.7	507.5	506.4	505.1	504.0	502.6	501.4
145°	502.3	496.8	494.2	494.2	494.3	494.3	494.2	494.2	494.1	494.1	494.0
147.5°	490.8	485.5	483.0	483.3	483.7	484.0	484.5	484.5	485.0	485.2	485.6
150°	478.3	472.3	469.4	470.0	470.6	471.2	471.9	472.6	473.4	473.9	474.6
152.5°	467.6	460.4	457.2	457.8	458.6	459.2	460.0	460.8	461.6	462.4	463.1
155°	458.3	450.5	447.1	447.3	447.6	448.0	448.3	448.8	449.1	449.6	450.1
157.5°	452.3	444.3	441.0	440.9	441.1	441.2	441.3	441.6	441.8	442.0	442.4
160°	447.9	440.1	436.9	436.8	437.0	437.0	437.0	437.2	437.4	437.6	438.0
162.5°	443.9	436.3	433.2	433.0	432.9	433.1	433.2	433.1	433.3	433.5	433.8
165°	440.7	434.1	431.4	431.5	431.7	431.9	432.1	432.4	432.7	433.1	433.5
167.5°	441.7	435.8	433.8	433.5	433.2	432.9	432.9	432.6	432.6	432.4	432.4
170°	440.1	435.5	433.6	433.6	433.8	433.9	433.9	434.0	434.1	434.1	434.3
172.5°	439.4	436.0	434.6	435.0	435.4	435.7	436.1	436.5	436.8	437.3	437.7
175°	439.8	437.7	437.1	437.1	437.4	437.6	437.8	438.1	438.2	438.4	438.9
177.5°	442.0	441.3	440.9	440.9	440.9	440.9	440.9	440.9	440.9	441.0	441.0
180°	440.8	440.8	440.8	440.8	440.8	440.8	440.8	440.8	440.8	440.8	440.8



TEST NUMBER: P1444815  
 CATALOG NUMBER: EHBR1-30-UNV-TA-L940-UPL36

**CANDELA DISTRIBUTION (continued):**

	247.5°	250°	252.5°	255°	257.5°	260°	262.5°	265°	267.5°	270°	272.5°
0°	24483.0	24483.0	24483.0	24483.0	24483.0	24483.0	24483.0	24483.0	24483.0	24483.0	24483.0
2.5°	24674.4	24703.1	24701.0	24727.8	24726.4	24751.8	24746.6	24768.5	24763.6	24782.2	24771.2
5°	25483.8	25538.5	25556.5	25605.9	25616.2	25660.3	25661.2	25696.4	25692.1	25719.6	25704.9
7.5°	26249.4	26300.4	26324.7	26363.1	26382.2	26414.0	26426.4	26452.6	26458.8	26474.2	26473.7
10°	26314.0	26313.8	26325.8	26320.4	26331.1	26324.9	26338.0	26333.3	26352.6	26347.7	26362.2
12.5°	25444.5	25358.3	25326.8	25249.3	25232.3	25165.8	25170.5	25127.9	25148.5	25122.3	25166.9
15°	23576.0	23375.8	23276.9	23102.9	23048.3	22910.7	22899.6	22808.2	22832.9	22785.1	22854.9
17.5°	20814.8	20499.6	20326.7	20072.6	19971.7	19777.2	19738.1	19620.5	19638.7	19579.5	19663.9
20°	17522.7	17141.8	16923.7	16629.8	16498.7	16266.8	16205.2	16073.7	16090.2	16031.2	16126.7
22.5°	14193.0	13794.4	13548.1	13240.1	13072.7	12854.6	12789.1	12656.9	12664.4	12609.1	12700.9
25°	11133.2	10751.0	10511.9	10232.2	10086.8	9886.9	9818.1	9699.5	9706.2	9660.5	9742.9
27.5°	8612.3	8298.7	8098.7	7864.2	7734.0	7569.5	7502.4	7402.7	7402.4	7368.9	7437.8
30°	6730.0	6468.3	6288.8	6084.6	5962.3	5813.8	5749.1	5659.8	5655.9	5632.2	5686.9
32.5°	5269.5	5036.8	4873.0	4693.2	4583.4	4456.1	4394.8	4323.0	4316.4	4295.0	4339.9
35°	4096.4	3900.3	3759.5	3608.2	3619.3	3431.5	3462.7	3316.8	3277.2	3268.6	3302.0
37.5°	3166.0	3014.2	2899.7	2786.5	2709.7	2630.3	2587.6	2549.2	2544.8	2541.1	2564.5
40°	2478.1	2371.9	2288.7	2210.9	2158.1	2109.6	2082.9	2061.8	2056.8	2054.0	2068.2
42.5°	2005.6	1934.0	1880.3	1832.9	1800.8	1774.4	1759.8	1748.0	1744.1	1744.2	1752.6
45°	1694.5	1651.1	1616.5	1587.0	1566.5	1575.5	1549.0	1562.8	1544.5	1563.5	1551.0
47.5°	1492.2	1455.2	1433.8	1412.9	1400.5	1390.6	1390.9	1391.1	1395.0	1395.6	1399.7
50°	1336.2	1314.7	1299.9	1286.6	1280.1	1274.9	1276.6	1278.0	1281.9	1282.1	1285.1
52.5°	1220.6	1206.6	1197.6	1189.3	1186.5	1183.5	1184.8	1184.2	1185.9	1185.1	1187.5
55°	1126.6	1120.0	1117.2	1114.2	1114.6	1113.8	1114.3	1111.4	1109.5	1107.3	1109.3
57.5°	1049.6	1048.7	1050.5	1051.8	1055.4	1056.7	1057.4	1054.0	1050.7	1047.7	1049.5
60°	990.2	991.6	996.3	1000.1	1005.2	1007.6	1009.0	1007.0	1004.6	1002.2	1003.7
62.5°	931.5	933.8	939.4	943.7	949.8	953.0	956.5	956.7	957.6	956.7	957.7
65°	863.4	866.2	871.4	874.9	880.6	883.4	887.0	887.7	889.7	889.3	890.9
67.5°	811.7	814.3	818.5	821.9	827.0	829.9	833.1	833.3	834.0	833.8	835.4
70°	756.6	757.8	761.6	764.4	769.5	772.5	776.2	777.3	779.5	779.9	781.7
72.5°	697.8	697.2	699.5	700.8	704.6	706.9	711.6	714.1	717.9	719.0	720.3
75°	633.7	633.1	635.8	637.0	640.2	642.6	647.8	651.1	657.0	659.5	658.9
77.5°	559.5	560.9	565.9	568.8	573.1	576.1	582.8	588.1	599.0	603.7	598.9
80°	476.6	478.0	483.2	485.9	491.6	495.3	502.8	509.1	518.7	520.8	518.1
82.5°	374.7	375.1	379.8	381.8	389.2	394.6	404.1	409.2	415.1	414.2	413.5
85°	255.6	259.0	264.9	270.7	279.9	288.5	297.6	304.9	299.7	308.0	298.7
87.5°	136.6	136.2	144.2	142.9	155.6	162.9	170.8	174.5	178.7	177.9	177.9
90°	55.3	52.5	51.7	48.7	48.5	45.4	45.8	42.9	43.7	40.2	45.4
92.5°	61.1	58.4	55.6	52.9	50.1	47.4	44.6	41.8	39.1	36.3	39.1
95°	74.8	72.3	69.7	67.1	64.6	62.0	59.4	56.9	54.3	51.8	55.0
97.5°	92.3	90.8	89.3	87.9	86.4	85.0	83.5	82.0	80.4	78.9	81.1
100°	104.3	104.3	104.3	104.3	104.1	104.1	104.1	104.1	104.1	104.1	105.7
102.5°	199.7	194.9	190.1	185.0	180.2	175.3	170.5	165.6	160.7	155.9	163.0
105°	451.8	432.7	413.7	394.6	375.5	356.4	337.3	318.3	299.2	280.1	299.8
107.5°	839.3	804.5	769.7	735.0	700.1	665.5	630.7	596.0	561.3	526.6	557.7
110°	1171.5	1134.7	1097.7	1060.9	1023.9	987.0	950.1	913.3	876.4	839.6	869.2



TEST NUMBER: P1444815  
 CATALOG NUMBER: EHBR1-30-UNV-TA-L940-UPL36

**CANDELA DISTRIBUTION (continued):**

	247.5°	250°	252.5°	255°	257.5°	260°	262.5°	265°	267.5°	270°	272.5°
112.5°	1305.9	1281.9	1258.1	1234.2	1210.5	1186.7	1163.0	1139.2	1115.6	1091.8	1106.2
115°	1287.7	1276.4	1265.0	1253.7	1242.4	1231.1	1219.7	1208.5	1197.3	1186.1	1186.9
117.5°	1180.5	1176.6	1172.8	1169.0	1165.2	1161.6	1157.8	1154.2	1150.6	1147.0	1139.0
120°	1026.0	1027.1	1028.3	1029.6	1030.9	1032.2	1033.4	1034.9	1036.4	1037.9	1027.0
122.5°	873.6	876.3	879.1	882.0	884.9	888.0	890.9	894.1	897.3	900.4	889.6
125°	740.8	743.5	746.2	749.1	751.8	754.9	757.9	761.1	764.1	767.4	758.3
127.5°	644.9	645.8	646.7	647.9	648.9	650.1	651.4	652.8	654.3	655.9	650.2
130°	583.7	582.7	581.7	580.9	579.9	579.3	578.6	578.1	577.5	577.2	574.6
132.5°	548.0	545.7	543.3	541.1	539.0	537.0	535.0	533.2	531.4	529.8	529.1
135°	528.0	524.8	521.6	518.5	515.4	512.7	509.9	507.3	504.7	502.3	502.6
137.5°	514.0	510.9	507.7	504.7	501.6	498.9	496.0	493.3	490.8	488.4	489.3
140°	508.1	505.0	501.7	498.7	495.8	492.9	490.1	487.6	484.8	482.6	483.2
142.5°	500.1	497.4	494.4	491.7	489.0	486.5	484.0	481.7	479.1	477.1	477.7
145°	494.0	491.9	489.8	487.6	485.7	483.9	481.8	480.2	478.5	477.1	477.4
147.5°	485.8	484.3	482.6	481.1	479.4	478.2	476.7	475.5	474.3	473.2	473.3
150°	475.1	474.2	473.1	472.2	471.1	470.2	469.3	468.5	467.7	467.0	466.9
152.5°	463.9	463.0	462.0	461.2	460.2	459.5	458.6	458.0	457.3	456.6	456.5
155°	450.5	450.1	449.7	449.2	448.9	448.7	448.3	448.1	447.8	447.7	447.7
157.5°	442.6	442.5	442.3	442.3	442.3	442.2	442.1	442.3	442.1	442.3	442.4
160°	438.3	438.1	437.7	437.5	437.3	437.0	436.9	436.8	436.7	436.5	436.8
162.5°	434.0	434.2	434.3	434.4	434.7	434.9	435.2	435.5	435.7	436.1	436.4
165°	434.0	433.9	433.7	433.5	433.6	433.6	433.6	433.7	433.7	433.9	434.3
167.5°	432.3	432.6	432.7	433.0	433.3	433.7	434.0	434.5	434.9	435.5	435.8
170°	434.3	434.3	434.3	434.3	434.3	434.5	434.6	434.7	434.8	435.1	435.4
172.5°	438.1	438.1	437.9	438.1	437.9	438.1	438.1	438.2	438.2	438.2	438.4
175°	438.9	439.3	439.5	439.8	439.9	440.1	440.3	440.6	440.8	441.0	441.0
177.5°	441.0	441.1	441.1	441.1	441.1	441.2	441.2	441.2	441.2	441.1	441.3
180°	440.8	440.8	440.8	440.8	440.8	440.8	440.8	440.8	440.8	440.8	440.8



TEST NUMBER: P1444815  
 CATALOG NUMBER: EHBR1-30-UNV-TA-L940-UPL36

**CANDELA DISTRIBUTION (continued):**

	275°	277.5°	280°	282.5°	285°	287.5°	290°	292.5°	295°	297.5°	300°
0°	24483.0	24483.0	24483.0	24483.0	24483.0	24483.0	24483.0	24483.0	24483.0	24483.0	24483.0
2.5°	24789.5	24777.1	24789.8	24776.9	24789.8	24774.3	24784.8	24768.1	24772.4	24755.0	24759.5
5°	25726.8	25707.1	25717.6	25691.9	25694.6	25660.3	25659.7	25619.8	25609.3	25563.8	25543.8
7.5°	26484.7	26478.3	26481.9	26465.4	26463.5	26440.1	26428.9	26395.9	26375.2	26333.3	26304.7
10°	26364.8	26384.1	26389.1	26408.8	26412.9	26432.4	26436.5	26456.0	26460.0	26474.5	26474.7
12.5°	25164.8	25230.4	25246.1	25327.2	25361.3	25454.0	25503.7	25605.9	25666.6	25768.5	25831.1
15°	22853.0	22966.6	23011.8	23170.0	23257.6	23442.3	23558.4	23770.6	23920.3	24145.6	24306.3
17.5°	19671.3	19829.9	19901.5	20116.1	20256.1	20528.8	20725.3	21048.8	21296.4	21655.9	21940.8
20°	16143.0	16319.4	16416.5	16661.3	16826.5	17145.1	17390.5	17788.0	18119.5	18575.0	18964.5
22.5°	12729.6	12897.4	13005.3	13254.4	13440.4	13772.7	14046.9	14466.5	14837.9	15351.2	15818.1
25°	9774.0	9927.7	10025.3	10250.5	10425.2	10730.5	10992.4	11395.9	11759.3	12274.2	12753.1
27.5°	7472.1	7600.8	7694.8	7886.9	8041.0	8299.9	8524.9	8858.4	9171.5	9616.9	10043.4
30°	5720.5	5834.6	5926.1	6093.4	6236.2	6460.8	6658.6	6938.6	7197.8	7552.2	7891.5
32.5°	4371.5	4469.7	4551.2	4697.6	4827.2	5029.4	5207.6	5453.1	5675.5	5976.1	6255.3
35°	3333.1	3526.4	3512.7	3714.7	3747.2	3892.2	4051.3	4265.9	4462.9	4718.5	4956.1
37.5°	2587.0	2641.3	2699.6	2788.9	2882.7	3014.7	3149.1	3411.3	3507.6	3700.7	3897.4
40°	2086.1	2122.8	2161.3	2221.7	2287.4	2380.4	2478.2	2603.3	2731.6	2888.2	3048.2
42.5°	1763.7	1784.5	1809.0	1844.4	1884.9	1943.9	2009.3	2094.2	2183.3	2293.5	2406.1
45°	1575.7	1565.8	1573.1	1592.2	1616.6	1652.4	1693.7	1746.3	1804.3	1875.7	1951.8
47.5°	1400.5	1404.5	1406.7	1417.0	1430.1	1454.1	1479.2	1514.9	1583.7	1604.7	1646.1
50°	1284.8	1286.7	1286.1	1291.4	1298.0	1313.6	1329.8	1354.0	1378.1	1410.0	1440.5
52.5°	1187.8	1190.5	1190.2	1193.6	1197.2	1207.0	1217.3	1234.4	1250.2	1270.5	1288.0
55°	1111.3	1115.0	1116.4	1119.4	1121.0	1126.3	1130.3	1138.5	1145.2	1156.7	1167.4
57.5°	1052.4	1057.4	1059.8	1060.8	1058.7	1058.4	1057.0	1058.8	1060.2	1066.4	1072.3
60°	1006.0	1010.1	1010.7	1010.1	1006.3	1003.6	999.2	997.8	997.1	1000.1	1003.4
62.5°	957.5	958.9	957.9	956.7	952.4	949.7	945.2	943.6	942.0	944.1	945.8
65°	890.3	891.6	890.3	889.6	885.7	883.6	879.8	878.5	876.3	876.9	876.5
67.5°	835.8	837.1	836.1	835.0	832.3	831.0	828.2	826.5	823.8	822.8	821.0
70°	781.5	782.4	780.9	779.9	776.8	775.6	773.0	772.4	770.4	769.9	767.9
72.5°	719.0	719.0	716.8	716.2	713.9	713.8	712.7	713.7	713.6	714.8	714.3
75°	654.9	654.0	651.3	650.8	649.2	649.9	648.8	650.3	650.5	652.9	653.1
77.5°	590.8	587.5	582.4	579.9	576.4	576.0	574.0	575.4	574.9	577.6	578.7
80°	510.0	505.9	499.3	496.1	492.0	491.3	489.5	491.3	490.4	493.6	495.9
82.5°	407.1	403.6	396.7	394.2	389.4	389.9	387.9	389.9	389.6	394.4	397.1
85°	301.2	298.8	291.7	285.5	278.5	274.4	270.4	269.7	268.5	270.4	272.0
87.5°	173.9	171.8	166.2	162.6	150.4	150.9	146.1	145.8	144.6	143.6	146.1
90°	45.7	50.2	50.8	54.9	55.9	60.6	61.7	66.2	67.4	72.0	73.8
92.5°	41.8	44.6	47.3	50.1	52.8	55.6	58.3	61.1	67.1	72.8	78.9
95°	58.1	61.3	64.5	67.7	70.9	74.1	77.2	80.4	89.1	97.7	106.5
97.5°	83.2	85.2	87.4	89.4	91.6	93.7	95.8	97.9	107.3	116.6	126.0
100°	107.4	109.1	110.8	112.5	114.2	115.9	117.6	119.3	137.4	155.4	173.5
102.5°	170.2	177.5	184.7	191.8	199.1	206.4	213.5	220.7	262.1	303.3	344.7
105°	319.6	339.2	359.1	378.7	398.5	418.1	438.0	457.6	523.8	589.8	656.1
107.5°	588.8	619.9	651.0	682.3	713.5	744.7	775.8	807.0	871.5	936.0	1000.5
110°	898.9	928.7	958.3	988.0	1017.6	1047.4	1077.2	1107.0	1145.7	1184.3	1223.1



TEST NUMBER: P1444815  
 CATALOG NUMBER: EHBR1-30-UNV-TA-L940-UPL36

**CANDELA DISTRIBUTION (continued):**

	275°	277.5°	280°	282.5°	285°	287.5°	290°	292.5°	295°	297.5°	300°
112.5°	1120.7	1135.1	1149.6	1164.1	1178.5	1193.2	1207.6	1222.2	1241.6	1260.7	1280.1
115°	1187.8	1188.7	1189.7	1190.5	1191.6	1192.5	1193.7	1194.7	1200.8	1206.9	1212.9
117.5°	1131.0	1123.1	1115.3	1107.3	1099.4	1091.8	1084.0	1076.3	1075.0	1073.7	1072.4
120°	1016.5	1005.8	995.2	984.6	974.1	963.6	953.2	942.8	937.4	932.1	926.8
122.5°	879.0	868.4	857.9	847.3	836.9	826.6	816.3	806.1	802.1	798.4	794.7
125°	749.4	740.6	731.7	723.0	714.4	705.8	697.4	689.0	688.7	688.1	688.0
127.5°	644.7	639.3	634.0	628.7	623.6	618.4	613.4	608.4	610.6	612.6	614.8
130°	572.2	569.8	567.7	565.2	563.3	561.1	559.2	557.1	561.0	564.8	568.7
132.5°	528.7	528.2	527.9	527.5	527.4	527.3	527.4	527.2	531.8	536.2	540.7
135°	503.1	503.7	504.6	505.3	506.3	507.2	508.3	509.2	513.6	517.8	522.1
137.5°	490.3	491.3	492.5	493.6	495.1	496.3	497.9	499.3	502.5	506.0	509.3
140°	484.0	484.7	485.8	486.8	487.8	488.8	490.1	491.3	494.1	496.7	499.2
142.5°	478.6	479.1	480.1	481.1	482.1	483.2	484.3	485.2	487.3	489.0	491.3
145°	478.0	478.5	479.2	479.9	480.5	481.3	482.2	483.0	484.3	485.4	486.5
147.5°	473.6	473.9	474.4	474.9	475.4	475.9	476.4	476.7	477.6	478.2	479.1
150°	467.1	467.1	467.3	467.3	467.7	467.9	468.2	468.4	469.1	469.6	470.5
152.5°	456.6	456.6	456.8	456.8	457.1	457.3	457.3	457.6	458.3	458.7	459.4
155°	448.0	448.4	448.8	449.1	449.5	449.7	450.2	450.4	450.8	451.2	451.7
157.5°	442.8	443.0	443.5	443.6	444.1	444.3	444.7	445.0	445.4	445.7	446.1
160°	437.4	438.1	438.5	439.1	439.6	440.1	440.7	441.2	441.6	441.9	442.3
162.5°	436.8	437.1	437.5	437.8	438.1	438.4	438.7	439.1	439.7	440.1	440.9
165°	434.9	435.5	436.1	436.5	437.0	437.7	438.2	438.7	439.0	439.4	439.6
167.5°	436.5	436.8	437.5	438.1	438.5	439.0	439.6	440.1	440.5	440.7	441.0
170°	435.9	436.4	436.8	437.4	437.9	438.2	438.8	439.2	439.7	440.1	440.8
172.5°	438.9	439.3	439.6	440.0	440.4	440.9	441.3	441.6	442.1	442.4	442.9
175°	441.0	441.0	441.1	441.2	441.3	441.3	441.4	441.6	441.7	441.8	441.9
177.5°	441.5	441.8	442.0	442.2	442.3	442.6	442.8	443.0	443.0	443.0	443.0
180°	440.8	440.8	440.8	440.8	440.8	440.8	440.8	440.8	440.8	440.8	440.8



TEST NUMBER: P1444815  
 CATALOG NUMBER: EHBR1-30-UNV-TA-L940-UPL36

**CANDELA DISTRIBUTION (continued):**

	302.5°	305°	307.5°	310°	312.5°	315°	317.5°	320°	322.5°	325°	327.5°
0°	24483.0	24483.0	24483.0	24483.0	24483.0	24483.0	24483.0	24483.0	24483.0	24483.0	24483.0
2.5°	24742.2	24743.2	24723.3	24722.1	24703.5	24701.1	24682.9	24677.3	24662.6	24657.2	24642.1
5°	25492.8	25468.5	25412.3	25379.3	25323.8	25287.0	25226.9	25187.8	25129.7	25086.0	25027.7
7.5°	26252.0	26214.3	26151.2	26100.1	26023.1	25961.6	25871.4	25797.6	25700.0	25615.5	25512.9
10°	26474.7	26468.9	26452.8	26429.4	26393.5	26353.3	26292.0	26228.0	26142.4	26049.5	25935.5
12.5°	25926.9	25986.0	26066.6	26114.5	26172.6	26198.2	26222.0	26215.9	26200.3	26153.2	26087.4
15°	24539.0	24705.2	24925.3	25095.9	25292.2	25434.9	25592.4	25690.5	25788.4	25833.6	25861.3
17.5°	22331.3	22646.1	23040.7	23367.8	23745.2	24048.4	24380.7	24630.8	24888.1	25072.4	25239.0
20°	19495.4	19951.5	20509.7	21002.9	21576.4	22074.7	22620.7	23069.0	23531.3	23892.9	24235.0
22.5°	16419.6	16961.2	17636.1	18261.3	19000.5	19664.9	20414.5	21066.8	21748.1	22317.1	22867.3
25°	13394.9	13988.9	14726.9	15424.4	16261.6	17034.4	17923.4	18736.4	19616.9	20381.2	21136.3
27.5°	10633.0	11216.2	11969.6	12712.0	13597.4	14420.8	15373.3	16269.1	17271.6	18196.1	19141.7
30°	8362.9	8857.5	9533.1	10252.3	11125.4	11963.4	12926.2	13847.5	14890.4	15899.7	16964.9
32.5°	6625.7	7002.5	7533.7	8141.7	8947.4	9745.0	10661.8	11551.3	12578.2	13597.8	14705.7
35°	5262.0	5555.9	5960.9	6435.4	7117.7	7805.3	8616.2	9425.0	10383.1	11350.6	12427.4
37.5°	4149.4	4387.9	4705.0	5061.4	5608.7	6173.0	6837.9	7508.5	8341.0	9198.6	10174.5
40°	3240.2	3433.3	3680.2	3946.1	4359.3	4794.1	5308.3	5828.3	6497.1	7198.1	8005.7
42.5°	2545.4	2687.9	2862.3	3056.5	3442.2	3672.9	4021.6	4397.7	4889.5	5398.3	6005.5
45°	2044.2	2141.4	2262.3	2392.7	2571.6	2767.4	3006.2	3256.7	3723.8	3952.9	4322.2
47.5°	1707.1	1772.4	1849.3	1931.4	2036.9	2150.8	2292.5	2437.3	2624.5	2818.7	3046.2
50°	1480.1	1546.4	1572.8	1615.4	1676.5	1741.5	1821.4	1901.2	2001.6	2103.5	2220.6
52.5°	1311.6	1333.2	1362.0	1389.0	1426.8	1500.9	1524.8	1566.6	1622.9	1678.0	1739.5
55°	1182.9	1197.0	1215.7	1232.0	1254.9	1276.7	1308.3	1336.1	1373.7	1406.9	1447.7
57.5°	1082.8	1091.7	1104.7	1115.5	1130.2	1142.6	1161.1	1176.1	1197.7	1216.5	1241.3
60°	1010.0	1016.0	1024.7	1031.7	1041.1	1047.5	1056.8	1063.8	1075.2	1084.7	1098.6
62.5°	950.6	953.6	959.3	963.4	969.5	972.7	977.6	980.7	987.0	991.7	999.5
65°	879.3	879.9	883.8	885.5	890.2	892.0	896.0	897.4	902.6	906.1	912.9
67.5°	820.8	819.2	819.3	817.9	818.5	817.1	817.5	816.1	818.2	819.3	824.4
70°	767.5	765.2	764.4	762.0	761.2	758.7	758.0	755.8	755.5	754.7	756.6
72.5°	715.5	714.9	715.0	713.3	713.1	711.4	711.5	710.4	711.6	712.1	714.5
75°	655.7	655.9	657.0	655.5	656.0	654.5	655.0	653.6	654.4	654.1	656.4
77.5°	582.9	584.6	587.8	587.1	588.1	586.6	587.2	585.4	585.9	584.6	585.5
80°	501.0	504.7	509.0	508.8	510.5	509.4	511.0	509.2	510.0	507.7	507.2
82.5°	403.9	406.9	411.5	411.7	415.7	416.4	420.8	420.6	423.4	421.7	420.4
85°	276.1	278.2	282.2	284.3	288.4	291.0	295.2	297.0	293.9	299.5	295.1
87.5°	144.2	149.5	146.5	153.5	151.9	158.9	157.4	164.0	162.7	168.3	167.6
90°	79.5	81.5	87.4	89.7	96.5	99.4	100.5	97.1	98.0	94.7	95.7
92.5°	84.6	90.7	96.6	102.6	108.4	114.5	108.9	103.4	97.9	92.5	86.9
95°	115.2	123.8	132.5	141.2	149.9	158.6	149.2	140.0	130.7	121.4	112.1
97.5°	135.3	144.6	153.9	163.2	172.6	182.0	171.0	160.0	149.0	138.1	127.0
100°	191.5	209.5	227.5	245.6	263.6	281.5	261.1	240.6	220.1	199.6	179.1
102.5°	386.2	427.4	468.8	510.3	551.5	592.9	549.4	506.0	462.3	418.8	375.2
105°	722.2	788.4	854.5	920.7	986.8	1053.1	982.5	911.9	841.3	770.8	700.0
107.5°	1065.1	1129.4	1194.1	1258.6	1323.1	1387.8	1316.2	1244.5	1173.0	1101.2	1029.6
110°	1261.9	1300.6	1339.4	1378.2	1416.8	1455.8	1403.4	1351.3	1298.9	1246.5	1194.3



TEST NUMBER: P1444815  
 CATALOG NUMBER: EHBR1-30-UNV-TA-L940-UPL36

**CANDELA DISTRIBUTION (continued):**

	302.5°	305°	307.5°	310°	312.5°	315°	317.5°	320°	322.5°	325°	327.5°
112.5°	1299.4	1318.9	1338.1	1357.7	1377.0	1396.4	1359.0	1321.7	1284.2	1246.8	1209.3
115°	1219.2	1225.2	1231.4	1237.5	1243.7	1249.8	1224.6	1199.3	1174.1	1148.8	1123.4
117.5°	1071.2	1070.2	1068.9	1067.9	1066.5	1065.4	1051.2	1037.0	1022.9	1008.6	994.3
120°	921.4	916.1	910.8	905.5	900.2	894.8	888.8	882.6	876.5	870.3	864.2
122.5°	790.9	787.3	783.4	779.7	775.9	772.1	769.6	767.3	764.8	762.4	759.8
125°	687.7	687.4	687.1	686.8	686.3	686.1	684.7	683.5	682.0	680.8	679.3
127.5°	616.8	619.0	620.9	623.1	624.9	627.1	626.6	626.2	625.7	625.2	624.8
130°	572.4	576.3	580.0	583.7	587.3	591.2	590.2	589.5	588.6	587.8	587.0
132.5°	545.1	549.5	553.9	558.4	562.6	566.9	565.9	565.0	563.8	563.0	561.8
135°	526.2	530.5	534.5	538.7	542.7	546.8	545.6	544.4	543.0	541.8	540.6
137.5°	512.5	515.9	519.1	522.4	525.5	528.8	527.4	526.2	524.9	523.8	522.5
140°	501.8	504.4	506.9	509.5	511.9	514.5	512.9	511.5	509.9	508.4	506.7
142.5°	493.0	494.9	496.6	498.6	500.3	502.3	500.1	498.2	496.0	494.1	492.0
145°	487.7	489.0	490.1	491.3	492.2	493.5	491.0	488.8	486.3	484.2	481.8
147.5°	479.7	480.4	480.9	481.7	482.0	482.8	480.5	478.4	476.2	473.9	471.7
150°	470.9	471.6	472.1	472.7	473.2	473.8	471.5	469.3	466.8	464.6	462.4
152.5°	460.0	460.6	461.1	461.5	462.1	462.6	460.3	458.4	456.1	453.9	451.8
155°	451.8	452.3	452.5	452.9	453.0	453.2	451.4	449.7	447.9	446.1	444.2
157.5°	446.4	446.7	447.0	447.2	447.4	447.7	446.2	444.9	443.4	442.1	440.7
160°	442.5	442.8	443.1	443.3	443.6	443.6	442.3	441.4	440.2	439.0	437.7
162.5°	441.2	441.8	442.2	442.6	443.0	443.4	442.0	440.7	439.3	437.9	436.5
165°	439.9	440.2	440.5	440.8	440.9	441.0	440.1	439.2	438.2	437.3	436.2
167.5°	441.2	441.6	441.8	442.1	442.2	442.3	441.4	440.5	439.5	438.4	437.4
170°	441.0	441.4	441.9	442.3	442.6	442.9	442.3	441.5	440.7	439.9	439.0
172.5°	443.2	443.6	443.7	444.2	444.4	444.8	444.0	443.2	442.4	441.6	440.7
175°	441.9	442.0	442.2	442.2	442.2	442.3	441.6	440.9	440.4	439.7	439.1
177.5°	443.0	443.0	443.0	442.9	442.9	442.9	442.4	442.1	441.6	441.2	440.7
180°	440.8	440.8	440.8	440.8	440.8	440.8	440.8	440.8	440.8	440.8	440.8



TEST NUMBER: P1444815  
 CATALOG NUMBER: EHBR1-30-UNV-TA-L940-UPL36

**CANDELA DISTRIBUTION (continued):**

	330°	332.5°	335°	337.5°	340°	342.5°	345°	347.5°	350°	352.5°	355°
0°	24483.0	24483.0	24483.0	24483.0	24483.0	24483.0	24483.0	24483.0	24483.0	24483.0	24483.0
2.5°	24636.8	24626.1	24619.2	24610.4	24605.0	24598.2	24593.2	24589.0	24585.6	24582.4	24580.0
5°	24983.2	24928.1	24885.5	24839.2	24801.2	24763.2	24734.0	24709.8	24693.1	24680.5	24673.1
7.5°	25424.3	25323.5	25233.8	25139.5	25054.9	24971.7	24900.0	24838.2	24791.8	24761.8	24743.6
10°	25818.2	25683.2	25549.8	25409.3	25276.1	25146.9	25027.7	24922.8	24839.8	24784.7	24752.4
12.5°	25994.8	25879.8	25743.5	25591.0	25427.8	25262.6	25101.6	24956.5	24834.6	24752.9	24705.7
15°	25839.3	25792.0	25699.6	25581.2	25426.3	25255.5	25066.6	24888.9	24725.4	24619.5	24558.1
17.5°	25333.4	25399.3	25392.2	25346.9	25235.6	25091.8	24899.3	24699.7	24495.3	24353.6	24276.3
20°	24479.7	24686.8	24791.8	24845.8	24802.1	24708.8	24534.4	24332.0	24093.7	23908.7	23795.8
22.5°	23280.1	23645.7	23873.5	24040.2	24075.6	24043.8	23889.8	23697.2	23431.6	23209.3	23042.7
25°	21735.8	22271.4	22631.4	22913.7	23023.3	23051.6	22920.6	22729.1	22433.0	22174.0	21945.1
27.5°	19916.7	20612.8	21093.5	21472.8	21643.9	21718.1	21597.6	21402.1	21051.8	20742.7	20443.7
30°	17869.0	18694.6	19273.4	19728.2	19936.9	20034.9	19906.8	19688.7	19281.2	18909.1	18532.4
32.5°	15677.1	16580.6	17211.3	17705.3	17912.0	18004.3	17836.7	17591.7	17120.6	16682.3	16243.0
35°	13382.3	14294.2	14930.3	15411.0	15584.4	15640.0	15425.6	15142.4	14620.5	14139.5	13660.4
37.5°	11040.7	11889.2	12467.3	12898.7	13006.0	13015.6	12757.3	12444.5	11896.0	11421.7	10944.8
40°	8719.4	9435.0	9901.7	10247.0	10284.2	10251.0	9970.3	9655.5	9142.3	8717.4	8298.7
42.5°	6532.8	7073.0	7405.9	7642.6	7628.5	7562.9	7305.5	7034.9	6611.5	6287.9	5958.4
45°	4659.5	5015.7	5210.4	5348.9	5304.4	5241.9	5041.5	4851.9	4564.1	4355.1	4133.7
47.5°	3237.0	3662.3	3588.3	3859.1	3625.8	3779.9	3459.0	3282.1	3129.4	3018.3	2893.2
50°	2317.4	2414.9	2462.0	2494.1	2477.1	2453.3	2395.7	2344.2	2274.4	2223.6	2164.3
52.5°	1789.7	1838.4	1865.1	1884.4	1880.6	1872.0	1846.9	1823.9	1791.3	1769.8	1743.8
55°	1516.0	1516.6	1565.7	1544.7	1575.8	1539.4	1553.7	1513.3	1519.9	1485.1	1461.8
57.5°	1259.7	1279.7	1288.7	1297.3	1294.9	1293.4	1283.6	1278.8	1267.8	1264.4	1256.6
60°	1108.1	1118.5	1120.7	1124.7	1121.3	1120.0	1112.5	1109.7	1102.3	1101.0	1095.8
62.5°	1004.1	1009.4	1009.4	1009.4	1005.1	1001.0	992.5	988.0	981.8	980.4	977.4
65°	917.4	922.9	923.8	924.9	921.8	918.5	911.1	906.3	899.9	897.4	893.9
67.5°	827.8	833.7	835.7	838.7	836.9	836.2	831.1	829.3	825.0	823.9	820.8
70°	757.4	759.9	759.8	759.7	755.7	752.1	746.2	743.5	739.0	738.0	735.2
72.5°	715.6	717.4	716.2	714.8	709.5	704.3	697.4	692.3	686.5	682.9	678.8
75°	656.7	659.0	657.6	656.5	652.0	648.5	642.9	640.1	636.0	634.9	632.0
77.5°	584.4	585.5	583.2	582.9	579.4	577.2	573.0	572.3	569.3	569.3	566.6
80°	503.9	503.3	499.5	498.8	495.3	494.3	491.1	491.3	488.9	489.9	488.0
82.5°	414.7	412.4	407.4	405.9	401.9	401.5	399.3	401.2	399.7	401.9	400.6
85°	297.2	297.8	295.6	295.6	294.4	294.8	294.6	296.0	296.2	298.1	298.0
87.5°	165.6	168.1	167.6	169.7	169.7	172.2	172.9	176.5	177.0	180.4	180.4
90°	92.4	93.6	90.3	91.7	90.2	92.9	92.0	94.6	93.3	95.4	93.3
92.5°	81.4	75.9	70.5	64.9	62.1	59.3	56.8	53.8	51.1	48.3	45.5
95°	102.8	93.4	84.1	74.8	71.6	68.4	65.2	62.0	58.8	55.6	52.5
97.5°	116.0	105.0	94.0	83.0	80.2	77.5	74.6	71.9	69.1	66.4	63.6
100°	158.5	138.0	117.5	96.9	94.6	92.2	89.9	87.6	85.2	82.8	80.5
102.5°	331.7	288.0	244.4	200.8	192.5	184.3	176.0	167.7	159.4	151.2	142.9
105°	629.4	558.7	488.1	417.4	394.9	372.5	350.0	327.5	305.0	282.6	260.1
107.5°	957.8	886.1	814.4	742.6	701.2	659.7	618.2	576.6	535.2	493.6	452.1
110°	1141.9	1089.5	1037.1	984.6	951.3	917.9	884.4	851.0	817.5	784.0	750.5



TEST NUMBER: P1444815  
 CATALOG NUMBER: EHBR1-30-UNV-TA-L940-UPL36

**CANDELA DISTRIBUTION (continued):**

	330°	332.5°	335°	337.5°	340°	342.5°	345°	347.5°	350°	352.5°	355°
112.5°	1171.8	1134.3	1096.8	1059.1	1044.0	1028.8	1013.7	998.5	983.4	968.1	952.9
115°	1098.0	1072.7	1047.3	1021.7	1016.4	1011.0	1005.7	1000.2	994.8	989.3	983.8
117.5°	980.1	965.8	951.5	937.1	938.0	938.8	939.6	940.3	941.1	941.7	942.4
120°	858.0	851.8	845.7	839.4	844.0	848.4	852.9	857.3	861.7	866.0	870.3
122.5°	757.3	754.8	752.4	749.7	755.2	760.6	765.9	771.3	776.5	781.7	786.8
125°	678.1	676.6	675.3	673.7	679.3	684.7	690.2	695.4	700.8	705.8	711.0
127.5°	624.3	623.8	623.3	622.7	626.7	630.4	634.3	637.9	641.6	645.1	648.5
130°	586.1	585.2	584.4	583.5	587.0	590.5	593.9	597.0	600.4	603.3	606.3
132.5°	560.9	559.7	558.8	557.7	560.1	562.5	564.9	567.1	569.3	571.3	573.2
135°	539.4	538.1	536.8	535.5	537.8	540.1	542.3	544.3	546.3	548.0	549.9
137.5°	521.2	519.9	518.6	517.2	519.4	521.3	523.3	525.0	526.7	528.3	529.8
140°	505.3	503.6	502.3	500.7	502.5	504.1	505.9	507.5	509.1	510.4	511.8
142.5°	490.0	487.8	486.0	483.9	485.1	486.3	487.5	488.6	489.9	490.8	491.6
145°	479.5	477.0	474.9	472.3	473.4	474.3	475.3	476.3	476.9	477.6	478.3
147.5°	469.6	467.2	464.9	462.7	463.6	464.1	464.8	465.3	466.0	466.4	466.8
150°	460.0	457.5	455.1	452.8	453.4	453.9	454.5	455.0	455.6	455.9	456.3
152.5°	449.5	447.3	445.0	442.7	443.2	443.6	444.0	444.4	444.9	445.1	445.5
155°	442.3	440.4	438.4	436.6	437.0	437.4	437.8	438.1	438.3	438.5	438.8
157.5°	439.2	437.5	436.2	434.5	434.6	434.7	435.0	434.8	434.9	434.8	434.8
160°	436.6	435.2	434.0	432.6	432.6	432.6	432.8	432.7	432.7	432.5	432.5
162.5°	435.0	433.5	431.9	430.3	430.3	430.5	430.5	430.4	430.5	430.3	430.2
165°	435.3	434.1	433.0	431.8	431.7	431.5	431.4	431.2	431.0	430.6	430.3
167.5°	436.3	435.3	434.1	432.9	433.0	433.2	433.2	433.1	433.2	433.0	433.0
170°	438.2	437.2	436.4	435.5	435.3	435.2	435.0	434.8	434.5	434.3	434.1
172.5°	439.7	438.9	438.0	436.9	436.9	436.8	436.7	436.6	436.4	436.2	436.1
175°	438.3	437.8	436.9	436.3	436.2	436.1	436.0	435.9	435.7	435.6	435.5
177.5°	440.3	439.8	439.3	438.8	438.7	438.7	438.6	438.5	438.5	438.4	438.3
180°	440.8	440.8	440.8	440.8	440.8	440.8	440.8	440.8	440.8	440.8	440.8



TEST NUMBER: P1444815  
 CATALOG NUMBER: EHBR1-30-UNV-TA-L940-UPL36

**CANDELA DISTRIBUTION (continued):**

	357.5°	360°
0°	24483.0	24483.0
2.5°	24577.8	24576.5
5°	24669.2	24667.7
7.5°	24738.7	24738.3
10°	24746.8	24751.1
12.5°	24697.6	24701.0
15°	24553.3	24560.0
17.5°	24277.7	24286.5
20°	23802.7	23811.9
22.5°	23033.6	23037.5
25°	21915.5	21899.6
27.5°	20391.1	20363.8
30°	18453.3	18426.8
32.5°	16142.8	16126.3
35°	13542.0	13531.6
37.5°	10803.8	10782.7
40°	8145.7	8083.8
42.5°	5814.1	5705.6
45°	4018.1	3889.3
47.5°	2805.0	2725.4
50°	2126.1	2100.5
52.5°	1732.4	1726.4
55°	1461.8	1459.1
57.5°	1258.4	1257.4
60°	1098.6	1098.3
62.5°	979.4	979.9
65°	895.5	895.7
67.5°	821.6	821.1
70°	736.3	735.6
72.5°	677.4	676.5
75°	632.0	631.5
77.5°	567.5	566.4
80°	489.2	488.0
82.5°	402.4	401.0
85°	300.2	300.3
87.5°	183.6	183.5
90°	95.2	92.7
92.5°	42.9	40.3
95°	49.3	46.1
97.5°	60.9	58.1
100°	78.2	75.8
102.5°	134.7	126.4
105°	237.7	215.2
107.5°	410.6	369.1
110°	717.1	683.6



TEST NUMBER: P1444815  
CATALOG NUMBER: EHBR1-30-UNV-TA-L940-UPL36

**CANDELA DISTRIBUTION (continued):**

	357.5°	360°
112.5°	937.6	922.3
115°	978.1	972.6
117.5°	942.9	943.5
120°	874.3	878.5
122.5°	791.7	796.7
125°	715.9	720.9
127.5°	651.8	654.9
130°	608.9	611.8
132.5°	575.0	576.6
135°	551.3	552.7
137.5°	531.0	532.3
140°	512.7	513.8
142.5°	492.4	493.0
145°	478.9	479.3
147.5°	466.8	467.2
150°	456.4	456.7
152.5°	445.5	445.8
155°	438.8	439.0
157.5°	434.5	434.4
160°	432.2	432.1
162.5°	430.0	430.0
165°	429.9	429.5
167.5°	432.8	432.8
170°	433.8	433.6
172.5°	435.8	435.6
175°	435.4	435.3
177.5°	438.3	438.2
180°	440.8	440.8

LM-79-2019: Approved Method: Electrical and Photometric Measurements of Solid-  
State Lighting Products

Report Prepared for

Cooper Lighting Solutions

Metalux

Report Number: SP1-2506-472-7

Test Date: 08/04/2025

Luminaire Tested: EHBR-60-L940-N

Data in this report applies to families of products including EHBR-60-L940-N

**Test Information**

Test Method: LM-79-2019  
 Report Number: SP1-2506-472-7  
 Test Lab: COOPER LIGHTING SOLUTIONS  
 Photometer: SP1 - 76IN SPHERE  
 Measurement Geometry: 4π  
 Issue Date: 08/05/2025  
 Manufacturer: COOPER LIGHTING SOLUTIONS  
 Product Line: Metalux  
 Catalog Number: **EHBR-60-L940-N**  
 Description: Elevate Round Highbay at, 60000 lumens, 4000K 90CRI LEDs with N lens

**Spectral Parameters**

CCT (K): 3963  
 CIE u': 0.2267  
 CIE v': 0.5003  
 Duv: -0.0016  
 CIE x: 0.3810  
 CIE y: 0.3738  
 CIE z: 0.2453  
 Peak Wavelength (nm): 630  
 Dominant Wavelength (nm): 580  
 Purity: 26.49712  
 Rf: 90.7  
 Rg: 101

CRI (Ra):	93.4		
R1:	95.2	R9:	66.4
R2:	95.1	R10:	86.6
R3:	93.3	R11:	94.4
R4:	94.5	R12:	75.4
R5:	94.2	R13:	95.0
R6:	92.9	R14:	95.4
R7:	94.0	R15:	92.8
R8:	87.7		



**Test Conditions**

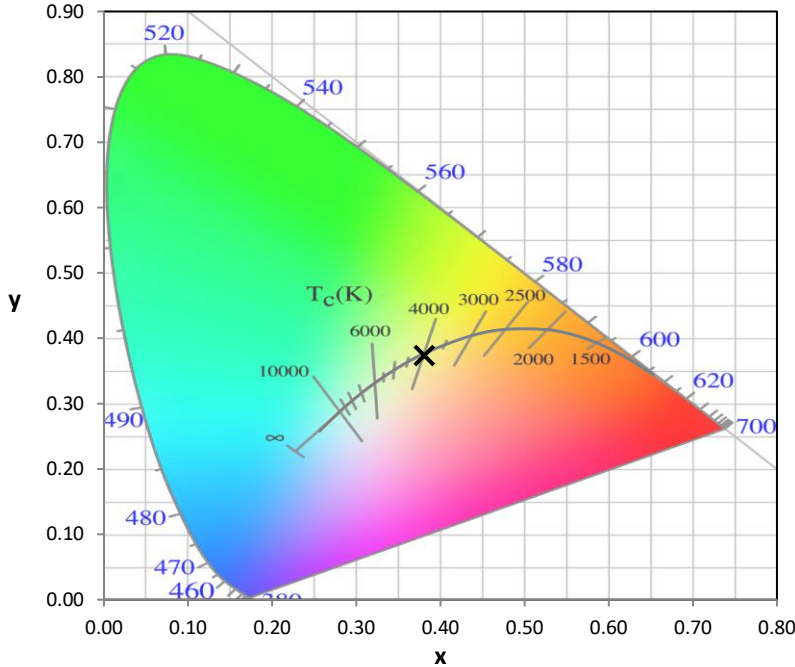
Stabilization Time: 44M  
 Operation Time: 1H 44M  
 Sphere Temperature (°C): 25.0

REPORT NUMBER: SP1-2506-472-7

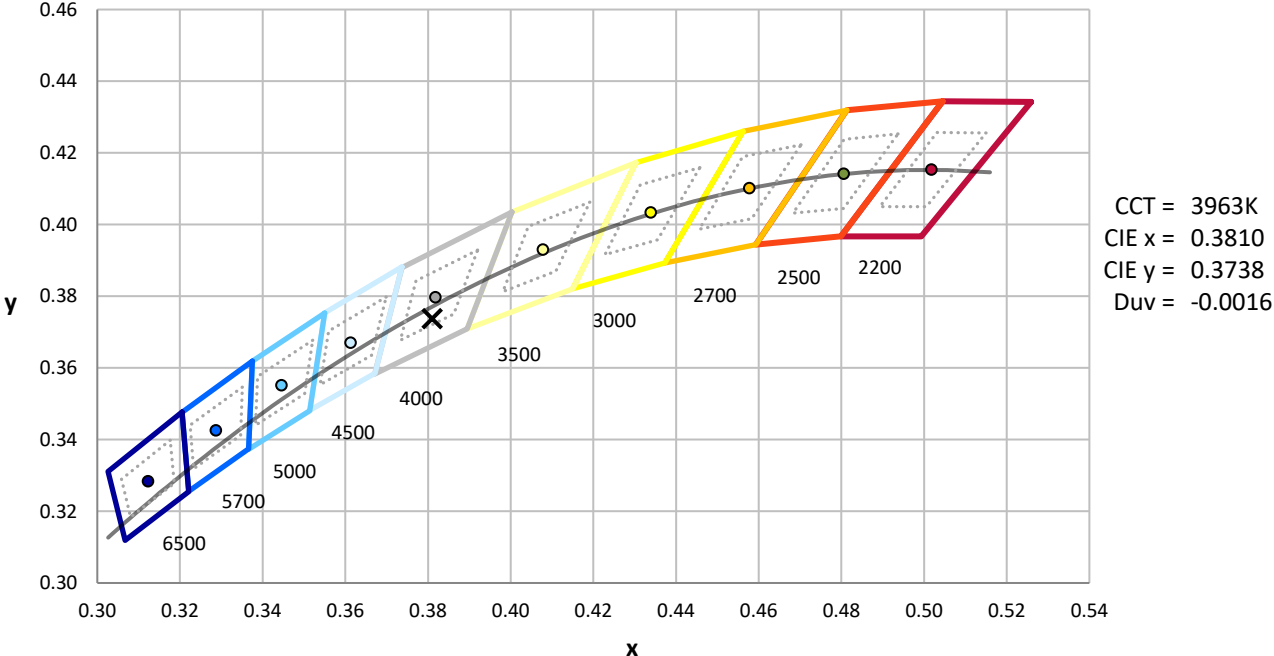
Measurement and Test Equipment			
Instrument	Identification Number	Calibration Date	Calibration Due Date
Photometer	76INCH SPHERE IN0058	6/16/2025	12/16/2025
Power Meter	XITRON INXT2011004	1/21/2025	1/21/2026
AC Power Source	CHROMA 61603 IN0063	10/22/2024	10/22/2025
DC Power Source	AGILENT E3634A IN0208	10/22/2024	10/22/2025
Sphere Thermometer	ONSET IN0085	10/22/2024	10/22/2025
Room Thermometer	ONSET IN0046	10/22/2024	10/22/2025

REPORT NUMBER: SP1-2506-472-7

**CIE 1931 Chromaticity Diagram**



**CIE 1931 Chromaticity Diagram with 2017 ANSI 7-Step and 4-Step Quadrangles**



Point lies inside the ANSI 4000K 4-step quadrangle

REPORT NUMBER: SP1-2506-472-7

**Photopic Flux vs. Wavelength**



**Photopic Lumens: NR**

λ (nm)	Power W <sup>^</sup> /nm	Lumens (φ/nm)	λ (nm)	Power W <sup>^</sup> /nm	Lumens (φ/nm)	λ (nm)	Power W <sup>^</sup> /nm	Lumens (φ/nm)	λ (nm)	Power W <sup>^</sup> /nm	Lumens (φ/nm)	λ (nm)	Power W <sup>^</sup> /nm	Lumens (φ/nm)
360	0	NR	490	141	NR	620	276	NR	750	5	NR	880	0	NR
365	0	NR	495	167	NR	625	279	NR	755	4	NR	885	0	NR
370	0	NR	500	193	NR	630	1000	NR	760	4	NR	890	0	NR
375	0	NR	505	215	NR	635	628	NR	765	3	NR	895	0	NR
380	0	NR	510	230	NR	640	164	NR	770	3	NR	900	0	NR
385	0	NR	515	243	NR	645	161	NR	775	2	NR	905	0	NR
390	1	NR	520	251	NR	650	137	NR	780	2	NR	910	0	NR
395	2	NR	525	256	NR	655	111	NR	785	2	NR	915	0	NR
400	3	NR	530	262	NR	660	92	NR	790	1	NR	920	0	NR
405	4	NR	535	267	NR	665	76	NR	795	1	NR	925	0	NR
410	6	NR	540	271	NR	670	71	NR	800	1	NR	930	0	NR
415	11	NR	545	276	NR	675	56	NR	805	1	NR	935	0	NR
420	20	NR	550	280	NR	680	47	NR	810	1	NR	940	0	NR
425	37	NR	555	285	NR	685	40	NR	815	1	NR	945	0	NR
430	63	NR	560	290	NR	690	34	NR	820	1	NR	950	0	NR
435	108	NR	565	294	NR	695	29	NR	825	1	NR	955	0	NR
440	186	NR	570	296	NR	700	25	NR	830	0	NR	960	0	NR
445	323	NR	575	298	NR	705	21	NR	835	0	NR	965	0	NR
450	403	NR	580	299	NR	710	18	NR	840	0	NR	970	0	NR
455	293	NR	585	298	NR	715	15	NR	845	0	NR	975	0	NR
460	214	NR	590	296	NR	720	13	NR	850	0	NR	980	0	NR
465	180	NR	595	288	NR	725	11	NR	855	0	NR	985	0	NR
470	132	NR	600	286	NR	730	9	NR	860	0	NR	990	0	NR
475	109	NR	605	282	NR	735	8	NR	865	0	NR	995	0	NR
480	110	NR	610	311	NR	740	7	NR	870	0	NR	1000	0	NR
485	121	NR	615	334	NR	745	6	NR	875	0	NR			

REPORT NUMBER: SP1-2506-472-7

**Scotopic Flux vs. Wavelength**



**Scotopic Lumens: NR**

**S/P: 1.76**

λ (nm)	Power W <sup>^</sup> /nm	Lumens (φ/nm)	λ (nm)	Power W <sup>^</sup> /nm	Lumens (φ/nm)	λ (nm)	Power W <sup>^</sup> /nm	Lumens (φ/nm)	λ (nm)	Power W <sup>^</sup> /nm	Lumens (φ/nm)	λ (nm)	Power W <sup>^</sup> /nm	Lumens (φ/nm)
360	0	NR	490	141	NR	620	276	NR	750	5	NR	880	0	NR
365	0	NR	495	167	NR	625	279	NR	755	4	NR	885	0	NR
370	0	NR	500	193	NR	630	1000	NR	760	4	NR	890	0	NR
375	0	NR	505	215	NR	635	628	NR	765	3	NR	895	0	NR
380	0	NR	510	230	NR	640	164	NR	770	3	NR	900	0	NR
385	0	NR	515	243	NR	645	161	NR	775	2	NR	905	0	NR
390	1	NR	520	251	NR	650	137	NR	780	2	NR	910	0	NR
395	2	NR	525	256	NR	655	111	NR	785	2	NR	915	0	NR
400	3	NR	530	262	NR	660	92	NR	790	1	NR	920	0	NR
405	4	NR	535	267	NR	665	76	NR	795	1	NR	925	0	NR
410	6	NR	540	271	NR	670	71	NR	800	1	NR	930	0	NR
415	11	NR	545	276	NR	675	56	NR	805	1	NR	935	0	NR
420	20	NR	550	280	NR	680	47	NR	810	1	NR	940	0	NR
425	37	NR	555	285	NR	685	40	NR	815	1	NR	945	0	NR
430	63	NR	560	290	NR	690	34	NR	820	1	NR	950	0	NR
435	108	NR	565	294	NR	695	29	NR	825	1	NR	955	0	NR
440	186	NR	570	296	NR	700	25	NR	830	0	NR	960	0	NR
445	323	NR	575	298	NR	705	21	NR	835	0	NR	965	0	NR
450	403	NR	580	299	NR	710	18	NR	840	0	NR	970	0	NR
455	293	NR	585	298	NR	715	15	NR	845	0	NR	975	0	NR
460	214	NR	590	296	NR	720	13	NR	850	0	NR	980	0	NR
465	180	NR	595	288	NR	725	11	NR	855	0	NR	985	0	NR
470	132	NR	600	286	NR	730	9	NR	860	0	NR	990	0	NR
475	109	NR	605	282	NR	735	8	NR	865	0	NR	995	0	NR
480	110	NR	610	311	NR	740	7	NR	870	0	NR	1000	0	NR
485	121	NR	615	334	NR	745	6	NR	875	0	NR			

REPORT NUMBER: SP1-2506-472-7

**Melanopic Flux vs. Wavelength**



**Melanopic Lumens: NR**

**M/P: 3.64**

λ (nm)	Power W <sup>^</sup> /nm	Lumens (φ/nm)	λ (nm)	Power W <sup>^</sup> /nm	Lumens (φ/nm)	λ (nm)	Power W <sup>^</sup> /nm	Lumens (φ/nm)	λ (nm)	Power W <sup>^</sup> /nm	Lumens (φ/nm)	λ (nm)	Power W <sup>^</sup> /nm	Lumens (φ/nm)
360	0	NR	490	141	NR	620	276	NR	750	5	NR	880	0	NR
365	0	NR	495	167	NR	625	279	NR	755	4	NR	885	0	NR
370	0	NR	500	193	NR	630	1000	NR	760	4	NR	890	0	NR
375	0	NR	505	215	NR	635	628	NR	765	3	NR	895	0	NR
380	0	NR	510	230	NR	640	164	NR	770	3	NR	900	0	NR
385	0	NR	515	243	NR	645	161	NR	775	2	NR	905	0	NR
390	1	NR	520	251	NR	650	137	NR	780	2	NR	910	0	NR
395	2	NR	525	256	NR	655	111	NR	785	2	NR	915	0	NR
400	3	NR	530	262	NR	660	92	NR	790	1	NR	920	0	NR
405	4	NR	535	267	NR	665	76	NR	795	1	NR	925	0	NR
410	6	NR	540	271	NR	670	71	NR	800	1	NR	930	0	NR
415	11	NR	545	276	NR	675	56	NR	805	1	NR	935	0	NR
420	20	NR	550	280	NR	680	47	NR	810	1	NR	940	0	NR
425	37	NR	555	285	NR	685	40	NR	815	1	NR	945	0	NR
430	63	NR	560	290	NR	690	34	NR	820	1	NR	950	0	NR
435	108	NR	565	294	NR	695	29	NR	825	1	NR	955	0	NR
440	186	NR	570	296	NR	700	25	NR	830	0	NR	960	0	NR
445	323	NR	575	298	NR	705	21	NR	835	0	NR	965	0	NR
450	403	NR	580	299	NR	710	18	NR	840	0	NR	970	0	NR
455	293	NR	585	298	NR	715	15	NR	845	0	NR	975	0	NR
460	214	NR	590	296	NR	720	13	NR	850	0	NR	980	0	NR
465	180	NR	595	288	NR	725	11	NR	855	0	NR	985	0	NR
470	132	NR	600	286	NR	730	9	NR	860	0	NR	990	0	NR
475	109	NR	605	282	NR	735	8	NR	865	0	NR	995	0	NR
480	110	NR	610	311	NR	740	7	NR	870	0	NR	1000	0	NR
485	121	NR	615	334	NR	745	6	NR	875	0	NR			

**Summary**

$R_f = 90.7$   
 $R_g = 101$   
 $CIE R_a = 93.4$   
 $R_9 = 66.4$



**Color Vector Graphics**

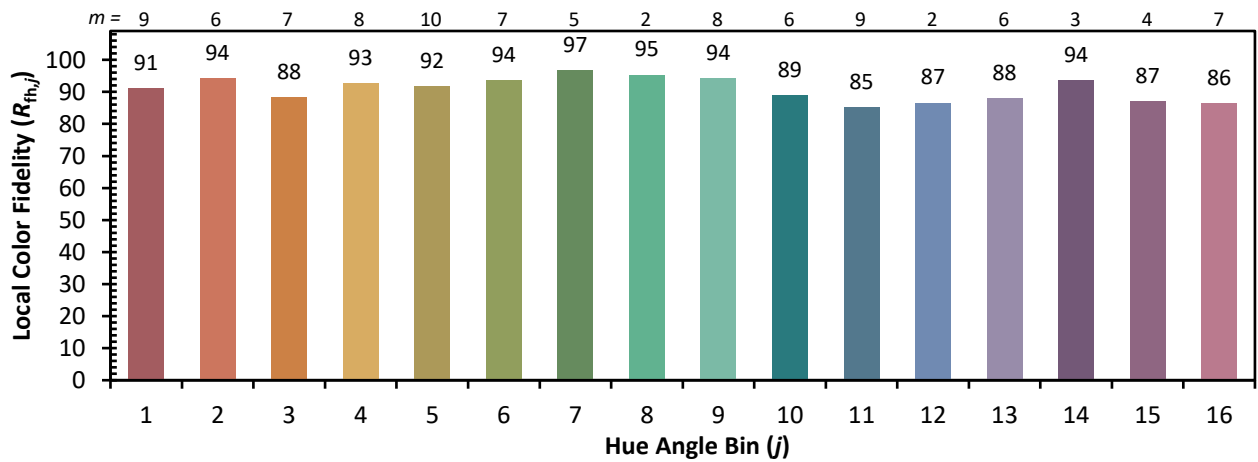
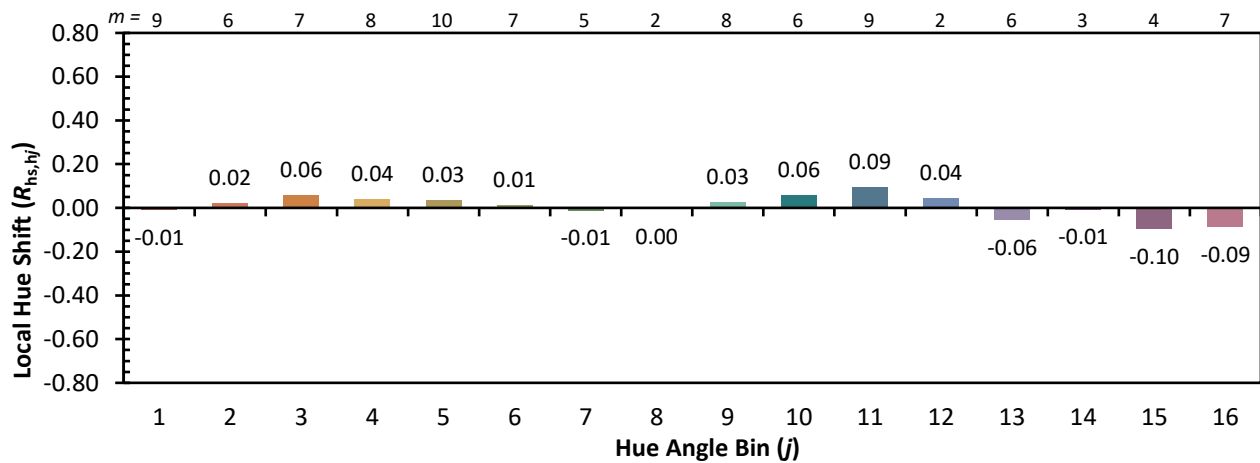
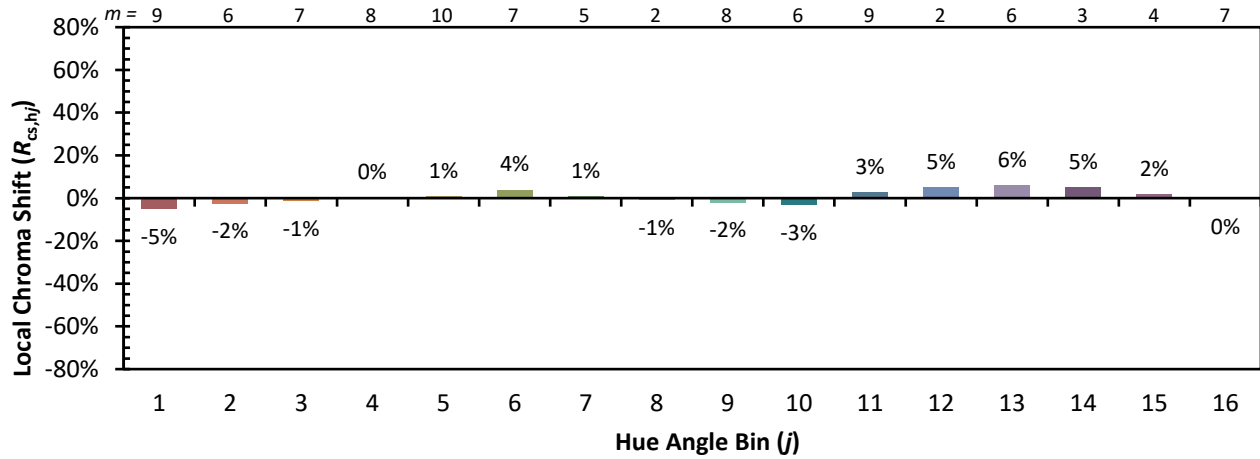


**Individual Sample Fidelity Index ( $R_{f,i}$ )**

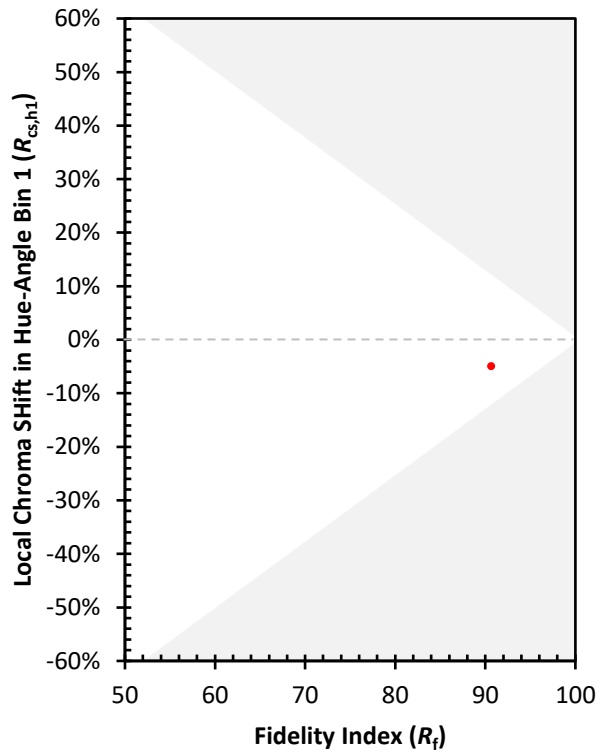
CES01 = 86	CES26 = 90	CES51 = 99	CES76 = 83
CES02 = 62	CES27 = 93	CES52 = 97	CES77 = 87
CES03 = 31	CES28 = 94	CES53 = 95	CES78 = 79
CES04 = 69	CES29 = 91	CES54 = 96	CES79 = 94
CES05 = 49	CES30 = 98	CES55 = 95	CES80 = 91
CES06 = 50	CES31 = 92	CES56 = 95	CES81 = 80
CES07 = 42	CES32 = 84	CES57 = 94	CES82 = 96
CES08 = 41	CES33 = 95	CES58 = 95	CES83 = 95
CES09 = 29	CES34 = 90	CES59 = 98	CES84 = 93
CES10 = 74	CES35 = 94	CES60 = 93	CES85 = 82
CES11 = 57	CES36 = 84	CES61 = 93	CES86 = 84
CES12 = 63	CES37 = 92	CES62 = 90	CES87 = 90
CES13 = 43	CES38 = 93	CES63 = 92	CES88 = 97
CES14 = 74	CES39 = 98	CES64 = 91	CES89 = 84
CES15 = 71	CES40 = 96	CES65 = 88	CES90 = 99
CES16 = 47	CES41 = 98	CES66 = 88	CES91 = 74
CES17 = 49	CES42 = 89	CES67 = 87	CES92 = 78
CES18 = 56	CES43 = 89	CES68 = 87	CES93 = 87
CES19 = 71	CES44 = 99	CES69 = 88	CES94 = 75
CES20 = 66	CES45 = 93	CES70 = 84	CES95 = 83
CES21 = 85	CES46 = 95	CES71 = 80	CES96 = 91
CES22 = 78	CES47 = 92	CES72 = 93	CES97 = 93
CES23 = 91	CES48 = 96	CES73 = 78	CES98 = 93
CES24 = 90	CES49 = 93	CES74 = 92	CES99 = 94
CES25 = 71	CES50 = 99	CES75 = 81	



Color Rendition by Hue-Angle Bin



Measure Comparisons



(END OF REPORT)